

Data Path : Z:\voasrv\HPCHEM1\MSVOA_X\Data\VX041025\
 Data File : VX045696.D
 Acq On : 10 Apr 2025 14:13
 Operator : JC/MD
 Sample : PB167534ZHE#02
 Misc : 5.0mL/MSVOA_X/WATER
 ALS Vial : 12 Sample Multiplier: 1

Instrument :
 MSVOA_X
 ClientSampleId :
 PB167534ZHE#02

Quant Time: Apr 11 01:56:42 2025
 Quant Method : Z:\voasrv\HPCHEM1\MSVOA_X\Method\82X040225W.M
 Quant Title : SW846 8260
 QLast Update : Wed Apr 02 03:11:43 2025
 Response via : Initial Calibration

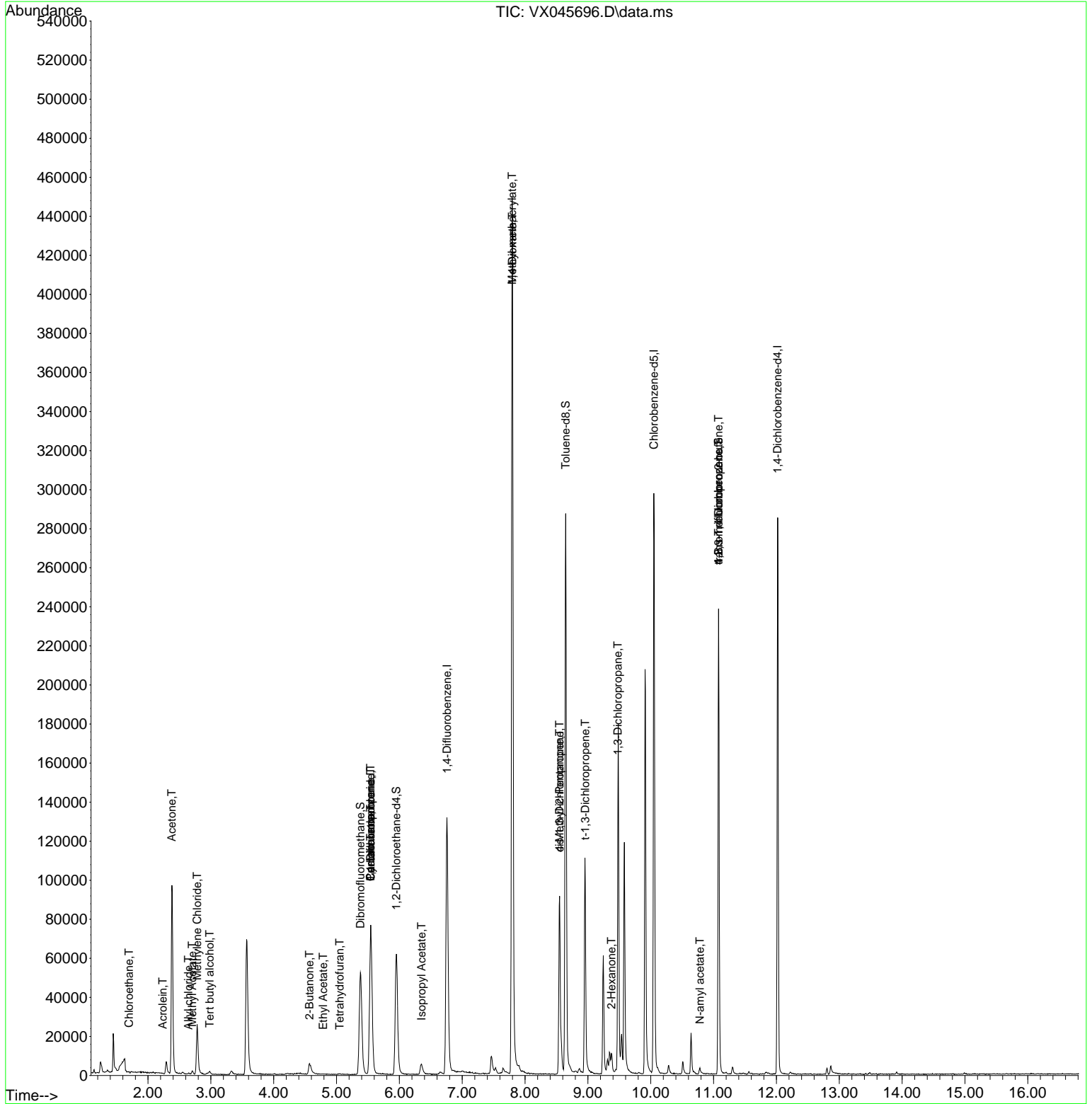
Compound	R.T.	QIon	Response	Conc	Units	Dev(Min)
Internal Standards						
1) Pentafluorobenzene	5.544	168	62257	50.000	ug/l	0.00
34) 1,4-Difluorobenzene	6.757	114	125231	50.000	ug/l	0.00
63) Chlorobenzene-d5	10.049	117	122789	50.000	ug/l	0.00
72) 1,4-Dichlorobenzene-d4	12.018	152	52291	50.000	ug/l	0.00
System Monitoring Compounds						
33) 1,2-Dichloroethane-d4	5.952	65	63767	56.009	ug/l	0.00
Spiked Amount	50.000	Range 74 - 125	Recovery	=	112.020%	
35) Dibromofluoromethane	5.379	113	44972	50.615	ug/l	0.00
Spiked Amount	50.000	Range 75 - 124	Recovery	=	101.220%	
50) Toluene-d8	8.647	98	160621	51.792	ug/l	0.00
Spiked Amount	50.000	Range 86 - 113	Recovery	=	103.580%	
62) 4-Bromofluorobenzene	11.079	95	62329	55.176	ug/l	0.00
Spiked Amount	50.000	Range 77 - 121	Recovery	=	110.360%	
Target Compounds						
						Qvalue
6) Chloroethane	1.697	64	266	0.573	ug/l #	42
11) Tert butyl alcohol	2.983	59	1677	10.960	ug/l	97
13) Acrolein	2.233	56	135	0.641	ug/l #	81
14) Allyl chloride	2.642	41	416	0.293	ug/l #	67
16) Acetone	2.380	43	107125	229.141	ug/l	98
18) Methyl Acetate	2.703	43	2071	1.924	ug/l #	90
20) Methylene Chloride	2.782	84	11200	12.797	ug/l	93
25) 2-Butanone	4.568	43	10830	15.826	ug/l	94
29) Tetrahydrofuran	5.050	42	127	0.286	ug/l #	35
31) Cyclohexane	5.544	56	2047	1.466	ug/l #	13
36) 1,1-Dichloropropene	5.544	75	6111	5.094	ug/l #	51
37) Ethyl Acetate	4.788	43	380	0.251	ug/l #	71
38) Carbon Tetrachloride	5.544	117	7300	5.630	ug/l #	16
43) Isopropyl Acetate	6.355	43	8324	3.633	ug/l	94
48) Methyl methacrylate	7.793	41	45265	38.260	ug/l #	50
49) 1,4-Dioxane	7.799	88	43	2.009	ug/l #	1
51) 4-Methyl-2-Pentanone	8.549	43	41913	27.592	ug/l #	48
53) t-1,3-Dichloropropene	8.958	75	189	2.423	ug/l #	43
54) cis-1,3-Dichloropropene	8.549	75	14047	10.666	ug/l #	65
57) 1,3-Dichloropropane	9.476	76	1386	0.901	ug/l #	42
59) 2-Hexanone	9.372	43	7786	6.922	ug/l #	28
74) N-amyl acetate	10.781	43	2334	1.165	ug/l #	51
76) 1,2,3-Trichloropropane	11.079	75	36052	28.265	ug/l #	37
81) trans-1,4-Dichloro-2-b...	11.079	75	36052	95.928	ug/l #	1

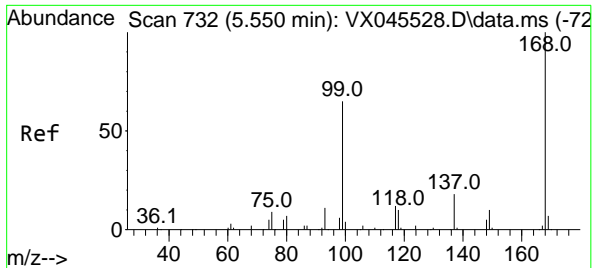
(#) = qualifier out of range (m) = manual integration (+) = signals summed

Data Path : Z:\voasrv\HPCHEM1\MSVOA_X\Data\VX041025\
 Data File : VX045696.D
 Acq On : 10 Apr 2025 14:13
 Operator : JC/MD
 Sample : PB167534ZHE#02
 Misc : 5.0mL/MSVOA_X/WATER
 ALS Vial : 12 Sample Multiplier: 1

Instrument :
 MSVOA_X
 ClientSampleId :
 PB167534ZHE#02

Quant Time: Apr 11 01:56:42 2025
 Quant Method : Z:\voasrv\HPCHEM1\MSVOA_X\Method\82X040225W.M
 Quant Title : SW846 8260
 QLast Update : Wed Apr 02 03:11:43 2025
 Response via : Initial Calibration

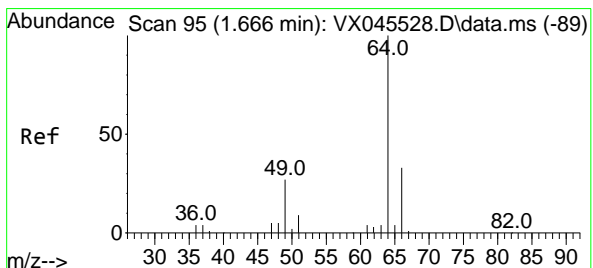
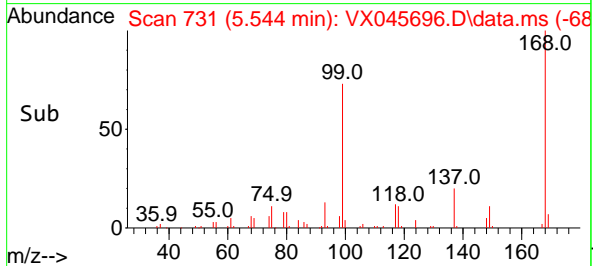
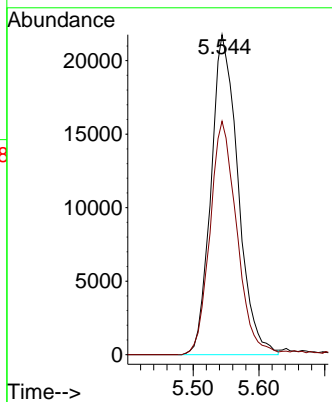
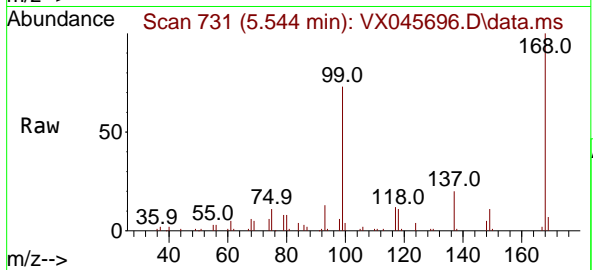




#1
 Pentafluorobenzene
 Concen: 50.000 ug/l
 RT: 5.544 min Scan# 71
 Delta R.T. -0.006 min
 Lab File: VX045696.D
 Acq: 10 Apr 2025 14:13

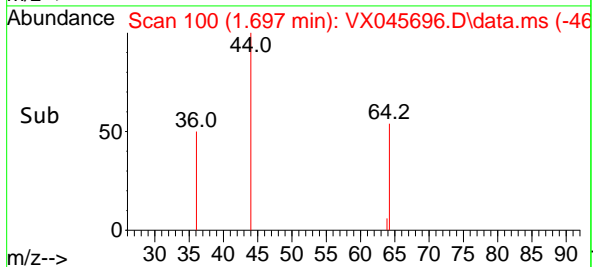
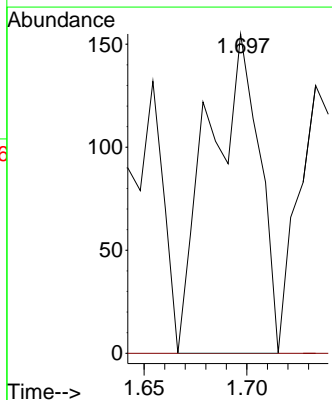
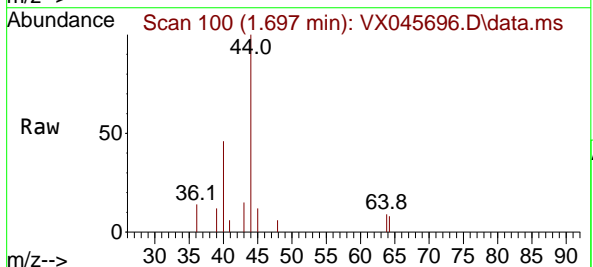
Instrument : MSVOA_X
 ClientSampleId : PB167534ZHE#02

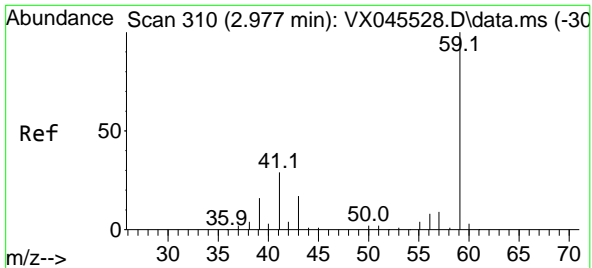
Tgt Ion:168 Resp: 62257
 Ion Ratio Lower Upper
 168 100
 99 73.0 52.3 78.5



#6
 Chloroethane
 Concen: 0.573 ug/l
 RT: 1.697 min Scan# 100
 Delta R.T. 0.031 min
 Lab File: VX045696.D
 Acq: 10 Apr 2025 14:13

Tgt Ion: 64 Resp: 266
 Ion Ratio Lower Upper
 64 100
 66 0.0 26.3 39.5#

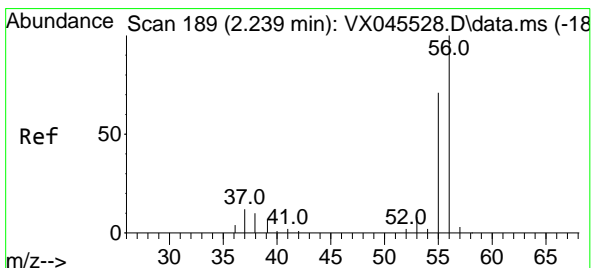
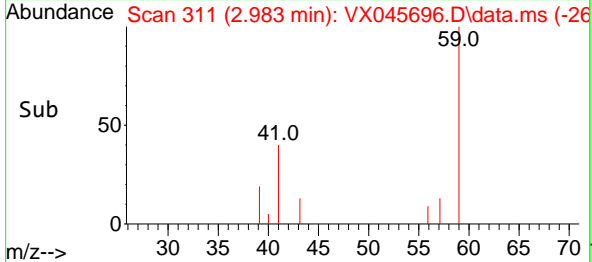
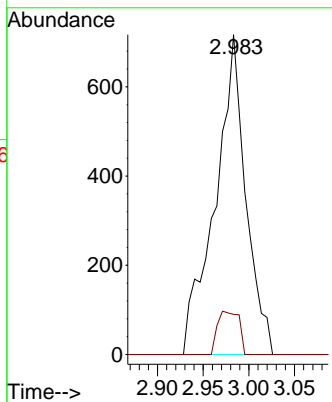
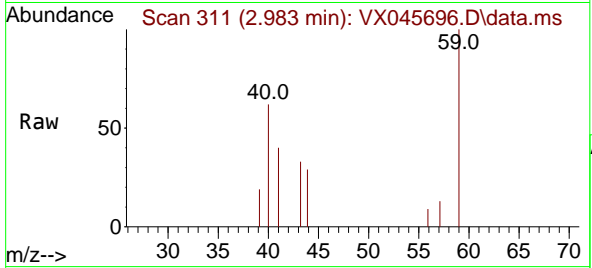




#11
 Tert butyl alcohol
 Concen: 10.960 ug/l
 RT: 2.983 min Scan# 311
 Delta R.T. 0.006 min
 Lab File: VX045696.D
 Acq: 10 Apr 2025 14:13

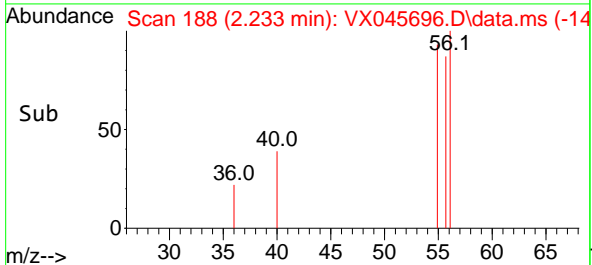
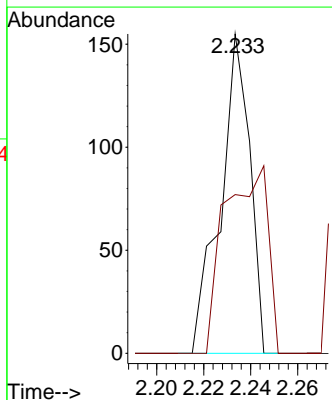
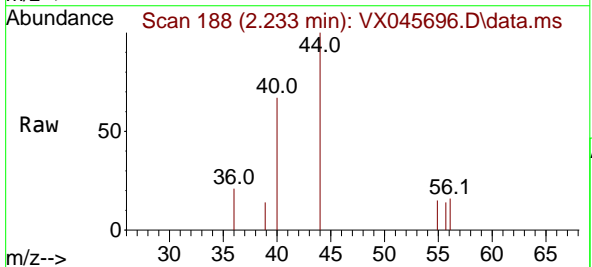
Instrument : MSVOA_X
 ClientSampleId : PB167534ZHE#02

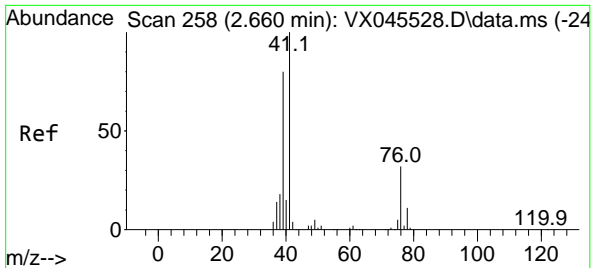
Tgt Ion: 59 Resp: 1677
 Ion Ratio Lower Upper
 59 100
 57 9.5 8.6 12.8



#13
 Acrolein
 Concen: 0.641 ug/l
 RT: 2.233 min Scan# 188
 Delta R.T. -0.006 min
 Lab File: VX045696.D
 Acq: 10 Apr 2025 14:13

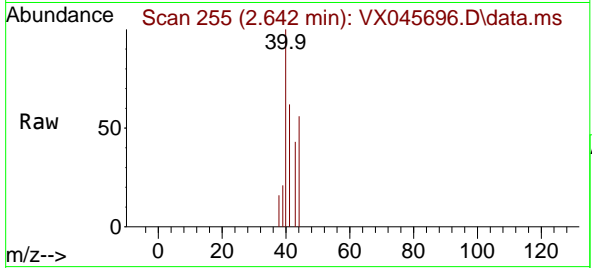
Tgt Ion: 56 Resp: 135
 Ion Ratio Lower Upper
 56 100
 55 85.9 56.2 84.2#





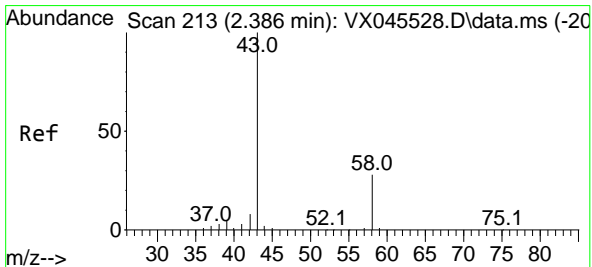
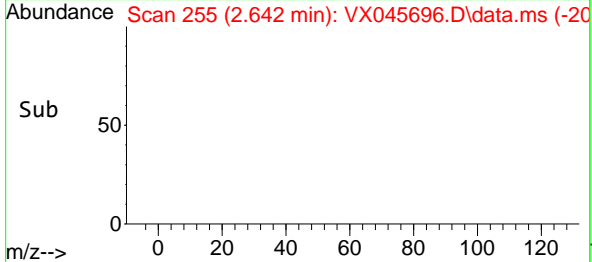
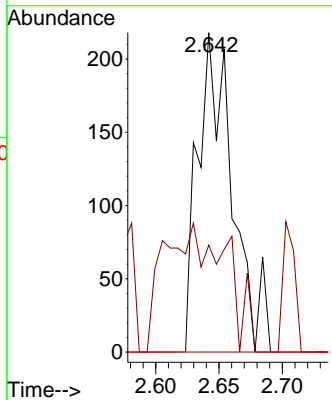
#14
 Allyl chloride
 Concen: 0.293 ug/l
 RT: 2.642 min Scan# 212
 Delta R.T. -0.018 min
 Lab File: VX045696.D
 Acq: 10 Apr 2025 14:13

Instrument : MSVOA_X
 ClientSampleId : PB167534ZHE#02



Tgt Ion: 41 Resp: 416

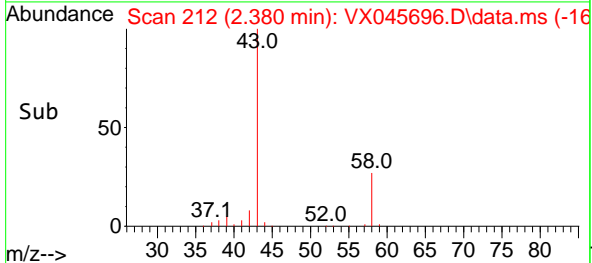
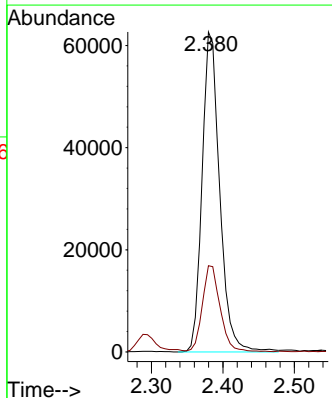
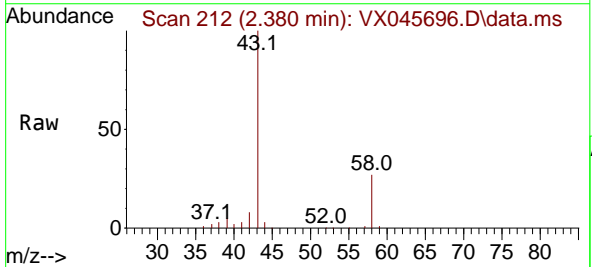
Ion	Ratio	Lower	Upper
41	100		
39	54.6	60.2	90.2#
76	0.0	24.6	36.8#

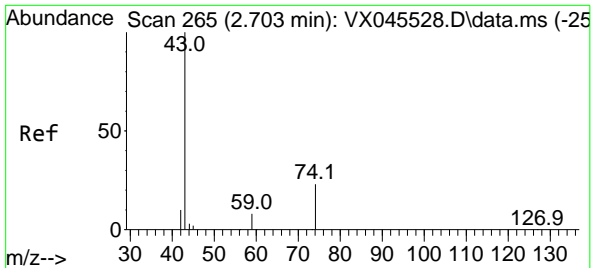


#16
 Acetone
 Concen: 229.141 ug/l
 RT: 2.380 min Scan# 212
 Delta R.T. -0.006 min
 Lab File: VX045696.D
 Acq: 10 Apr 2025 14:13

Tgt Ion: 43 Resp: 107125

Ion	Ratio	Lower	Upper
43	100		
58	26.7	22.3	33.5

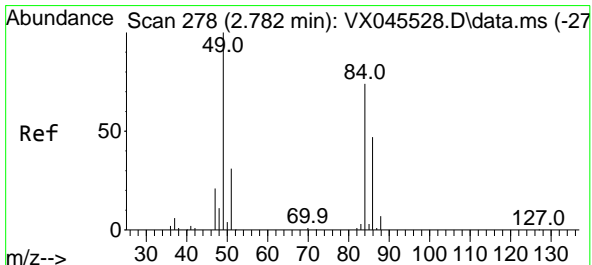
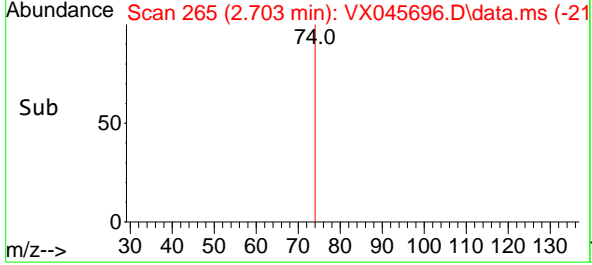
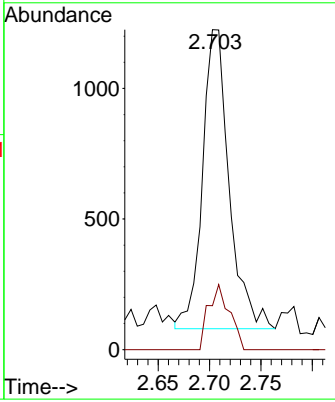
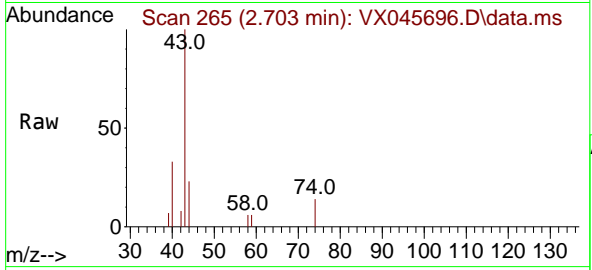




#18
 Methyl Acetate
 Concen: 1.924 ug/l
 RT: 2.703 min Scan# 2071
 Delta R.T. 0.000 min
 Lab File: VX045696.D
 Acq: 10 Apr 2025 14:13

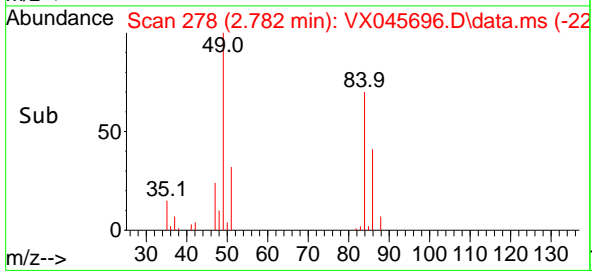
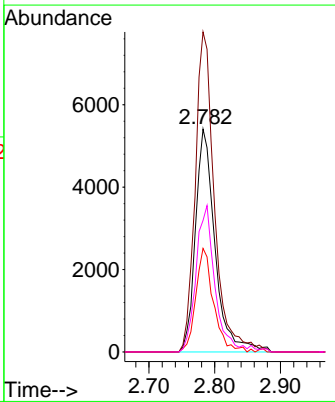
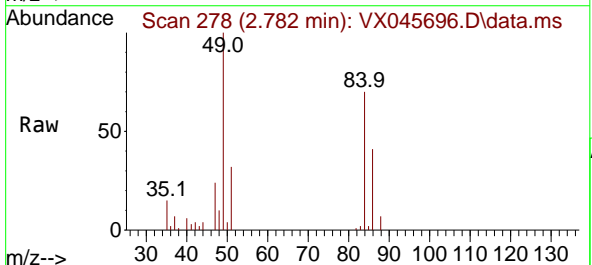
Instrument : MSVOA_X
 ClientSampleId : PB167534ZHE#02

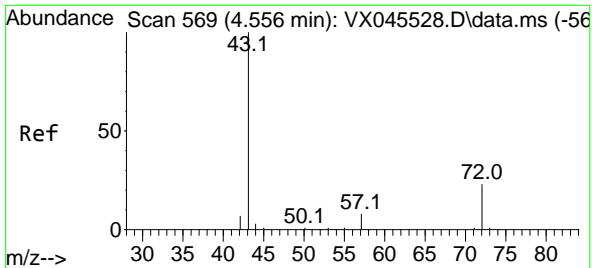
Tgt Ion	Resp	Lower	Upper
43	100		
74	17.0	17.5	26.3#



#20
 Methylene Chloride
 Concen: 12.797 ug/l
 RT: 2.782 min Scan# 278
 Delta R.T. 0.000 min
 Lab File: VX045696.D
 Acq: 10 Apr 2025 14:13

Tgt Ion	Resp	Lower	Upper
84	100		
49	143.6	107.5	161.3
51	46.5	33.0	49.6
86	59.0	50.1	75.1

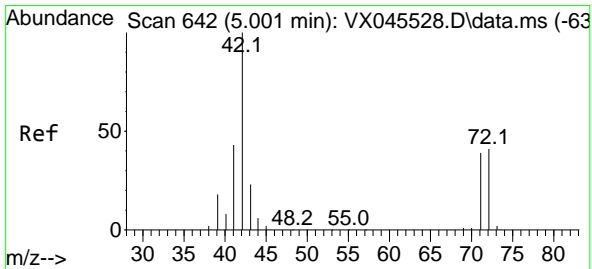
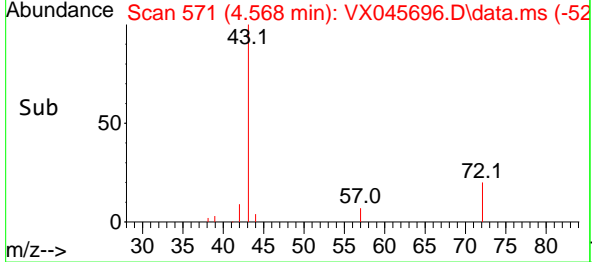
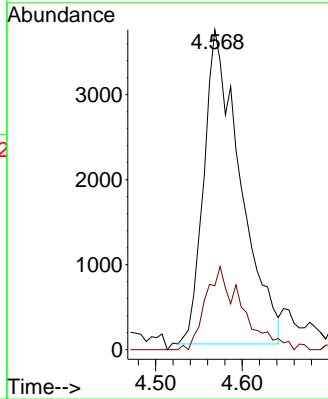
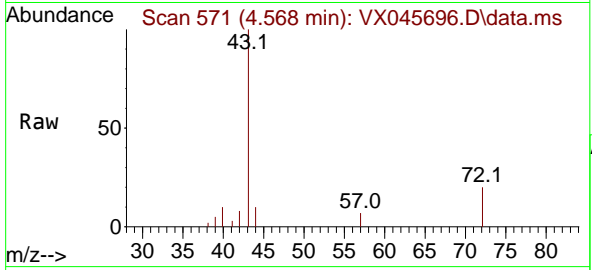




#25
 2-Butanone
 Concen: 15.826 ug/l
 RT: 4.568 min Scan# 51
 Delta R.T. 0.012 min
 Lab File: VX045696.D
 Acq: 10 Apr 2025 14:13

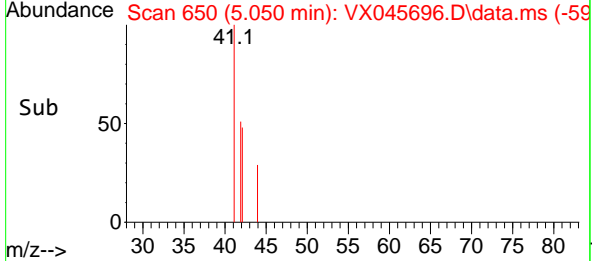
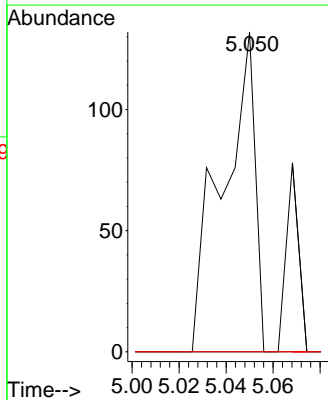
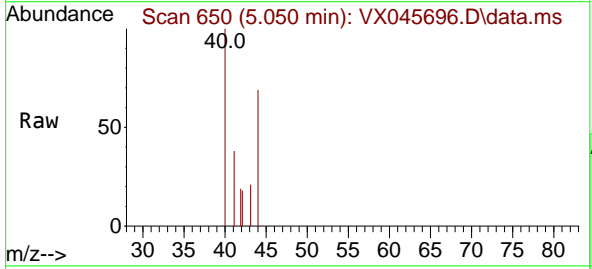
Instrument : MSVOA_X
 ClientSampleId : PB167534ZHE#02

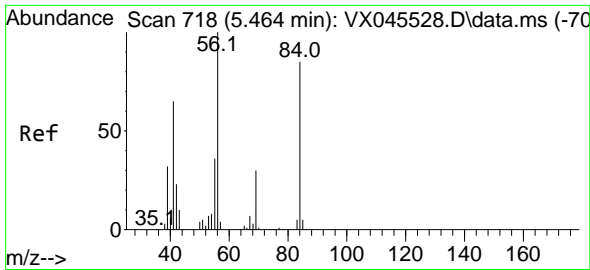
Tgt Ion: 43 Resp: 10830
 Ion Ratio Lower Upper
 43 100
 72 20.4 18.6 28.0



#29
 Tetrahydrofuran
 Concen: 0.286 ug/l
 RT: 5.050 min Scan# 650
 Delta R.T. 0.049 min
 Lab File: VX045696.D
 Acq: 10 Apr 2025 14:13

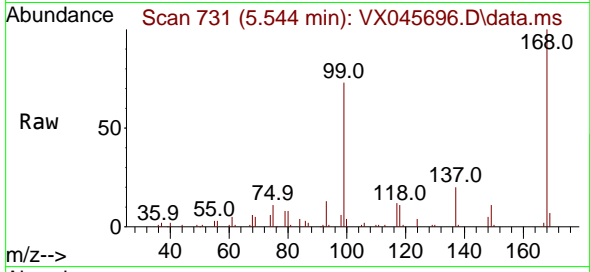
Tgt Ion: 42 Resp: 127
 Ion Ratio Lower Upper
 42 100
 72 0.0 33.4 50.0#
 71 0.0 31.4 47.0#



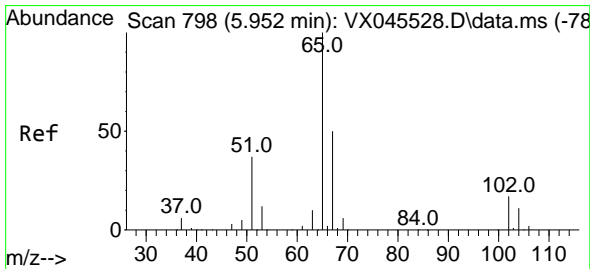
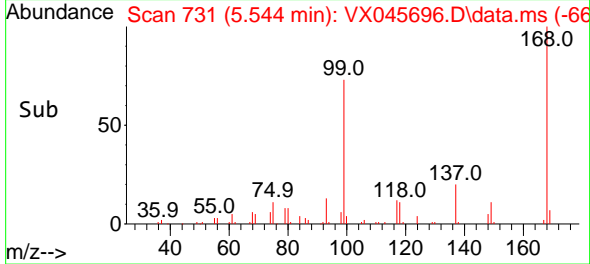
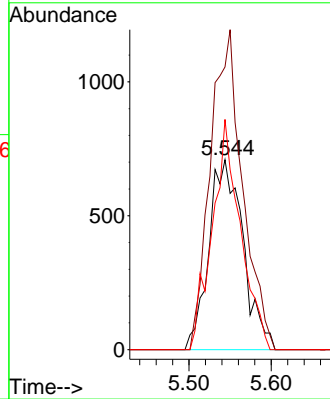


#31
 Cyclohexane
 Concen: 1.466 ug/l
 RT: 5.544 min Scan# 718
 Delta R.T. 0.079 min
 Lab File: VX045696.D
 Acq: 10 Apr 2025 14:13

Instrument : MSVOA_X
 ClientSampleId : PB167534ZHE#02

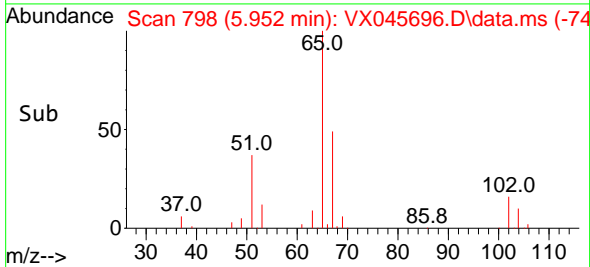
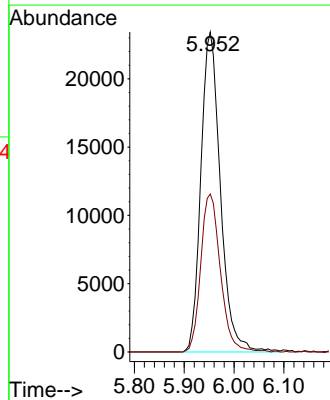
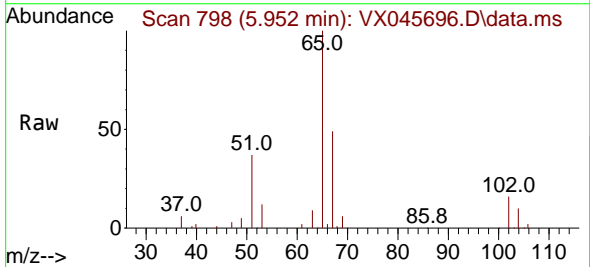


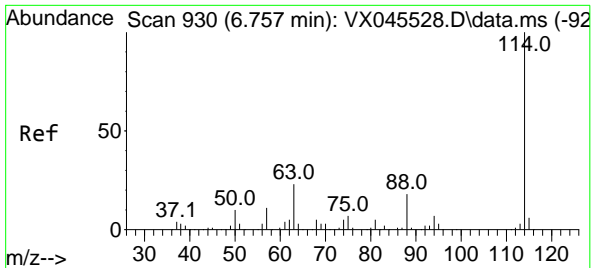
Tgt Ion: 56 Resp: 2047
 Ion Ratio Lower Upper
 56 100
 69 148.9 23.6 35.4#
 84 121.3 67.7 101.5#



#33
 1,2-Dichloroethane-d4
 Concen: 56.009 ug/l
 RT: 5.952 min Scan# 798
 Delta R.T. 0.000 min
 Lab File: VX045696.D
 Acq: 10 Apr 2025 14:13

Tgt Ion: 65 Resp: 63767
 Ion Ratio Lower Upper
 65 100
 67 49.7 0.0 99.0



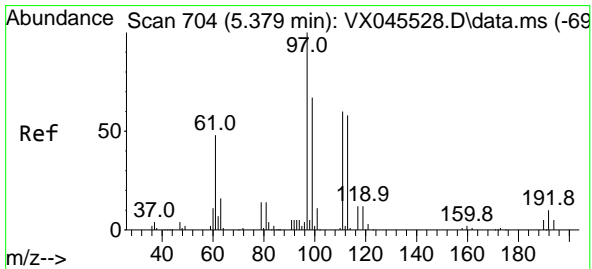
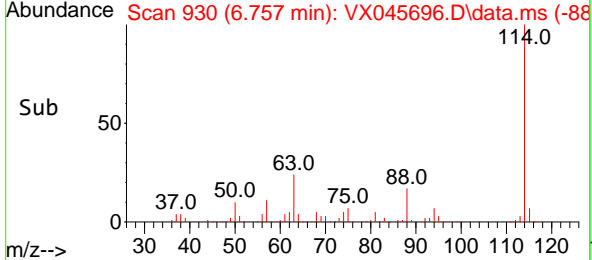
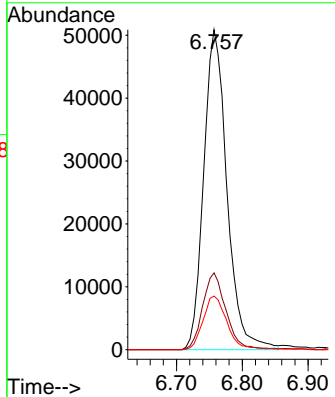
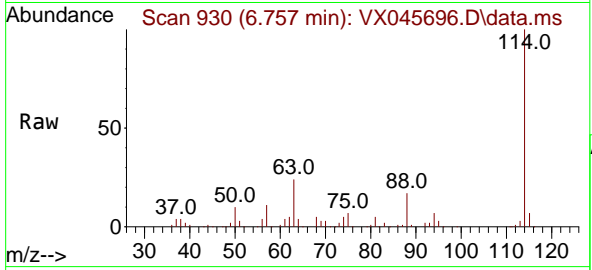


#34
 1,4-Difluorobenzene
 Concen: 50.000 ug/l
 RT: 6.757 min Scan# 911
 Delta R.T. 0.000 min
 Lab File: VX045696.D
 Acq: 10 Apr 2025 14:13

Instrument : MSVOA_X
 ClientSampleId : PB167534ZHE#02

Tgt Ion:114 Resp: 125231

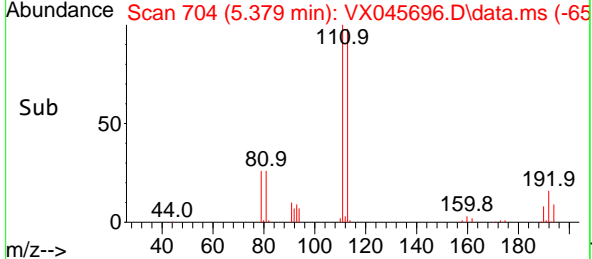
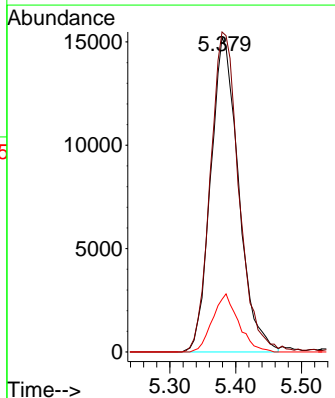
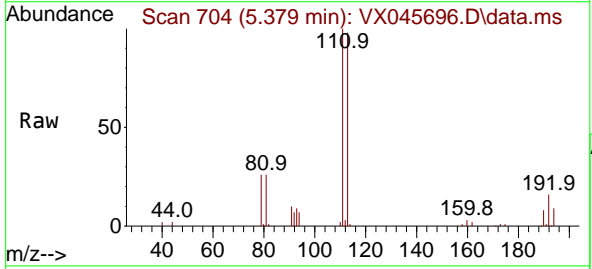
Ion	Ratio	Lower	Upper
114	100		
63	24.0	0.0	46.8
88	16.7	0.0	35.4

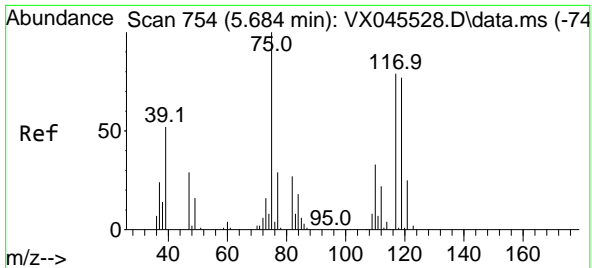


#35
 Dibromofluoromethane
 Concen: 50.615 ug/l
 RT: 5.379 min Scan# 704
 Delta R.T. 0.000 min
 Lab File: VX045696.D
 Acq: 10 Apr 2025 14:13

Tgt Ion:113 Resp: 44972

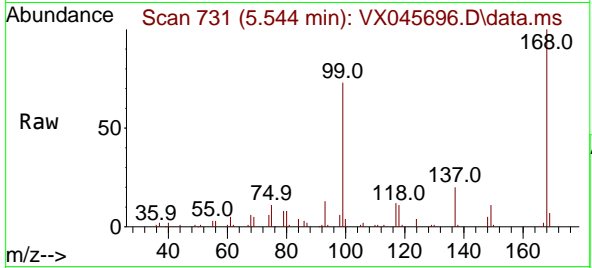
Ion	Ratio	Lower	Upper
113	100		
111	103.7	81.8	122.6
192	17.2	13.8	20.6





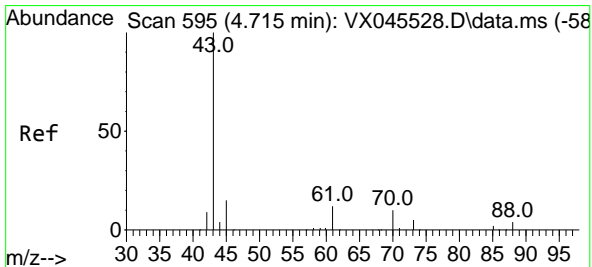
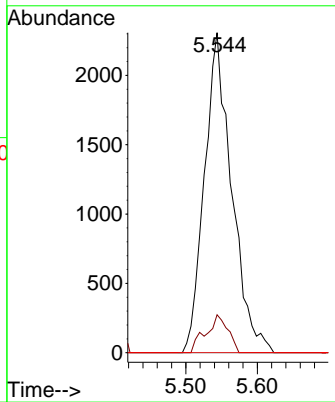
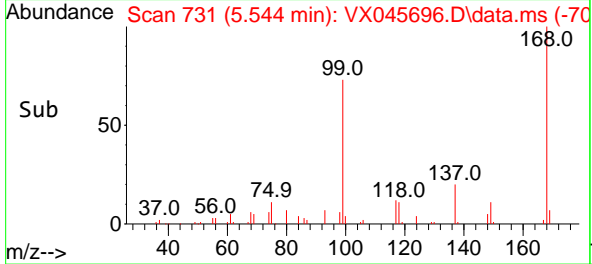
#36
 1,1-Dichloropropene
 Concen: 5.094 ug/l
 RT: 5.544 min Scan# 71
 Delta R.T. -0.140 min
 Lab File: VX045696.D
 Acq: 10 Apr 2025 14:13

Instrument : MSVOA_X
 ClientSampleId : PB167534ZHE#02

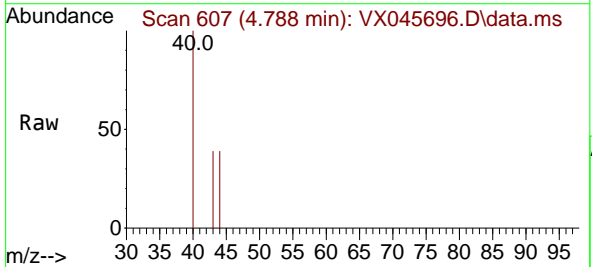


Tgt Ion: 75 Resp: 6111

Ion	Ratio	Lower	Upper
75	100		
110	9.5	16.9	50.6#
77	0.0	25.0	37.4#

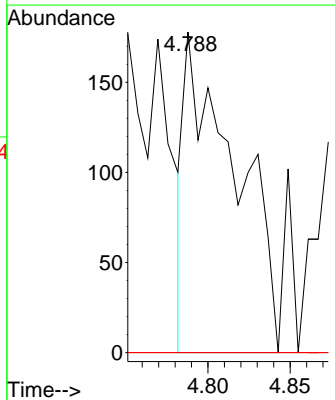
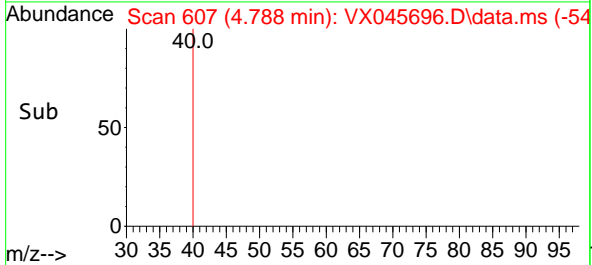


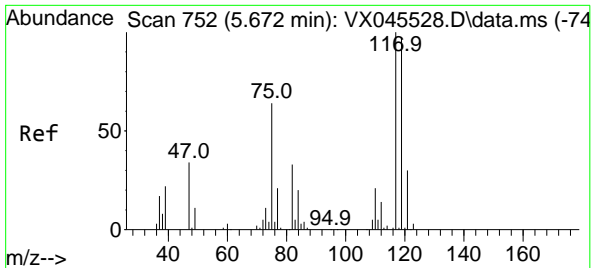
#37
 Ethyl Acetate
 Concen: 0.251 ug/l
 RT: 4.788 min Scan# 607
 Delta R.T. 0.073 min
 Lab File: VX045696.D
 Acq: 10 Apr 2025 14:13



Tgt Ion: 43 Resp: 380

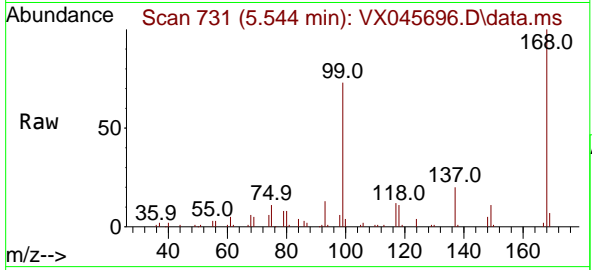
Ion	Ratio	Lower	Upper
43	100		
61	0.0	9.9	14.9#
70	0.0	7.5	11.3#





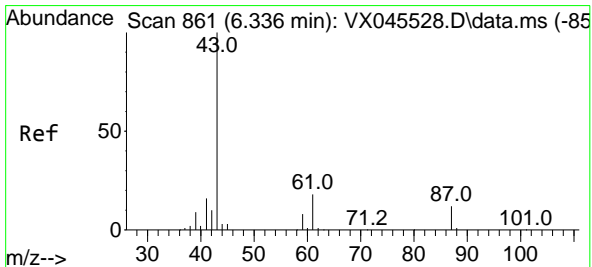
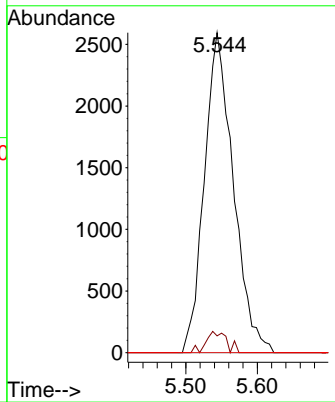
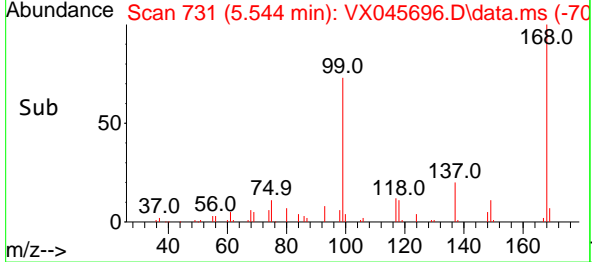
#38
 Carbon Tetrachloride
 Concen: 5.630 ug/l
 RT: 5.544 min Scan# 711
 Delta R.T. -0.128 min
 Lab File: VX045696.D
 Acq: 10 Apr 2025 14:13

Instrument : MSVOA_X
 ClientSampleId : PB167534ZHE#02

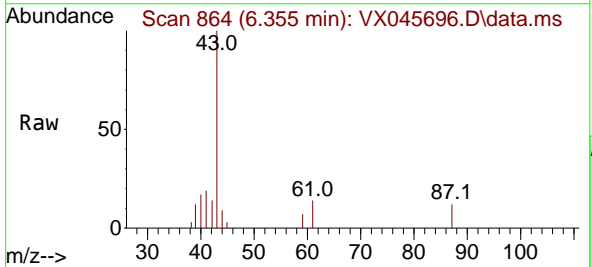


Tgt Ion:117 Resp: 7300

Ion	Ratio	Lower	Upper
117	100		
119	5.2	76.9	115.3#
121	0.0	24.2	36.2#

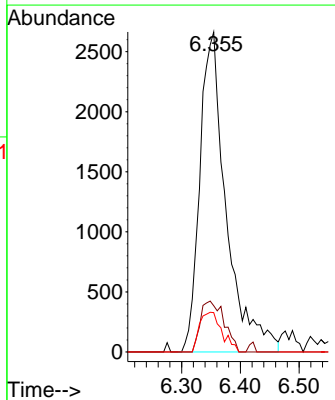
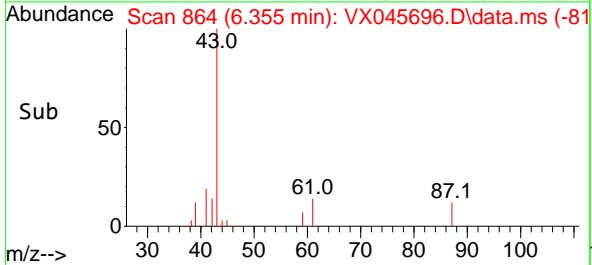


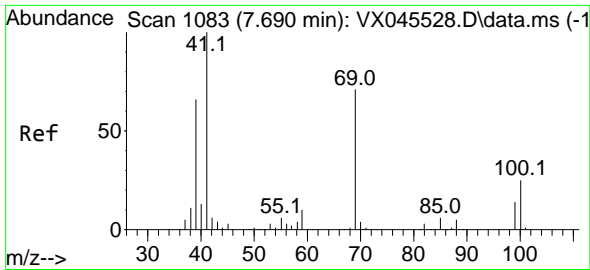
#43
 Isopropyl Acetate
 Concen: 3.633 ug/l
 RT: 6.355 min Scan# 864
 Delta R.T. 0.018 min
 Lab File: VX045696.D
 Acq: 10 Apr 2025 14:13



Tgt Ion: 43 Resp: 8324

Ion	Ratio	Lower	Upper
43	100		
61	14.3	14.1	21.1
87	10.5	9.2	13.8



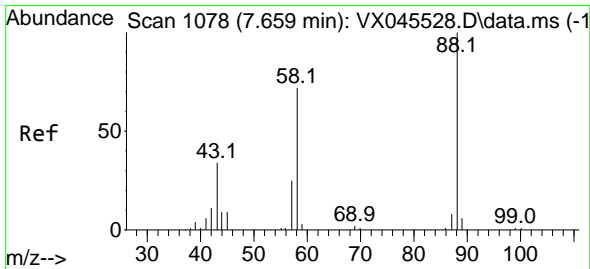
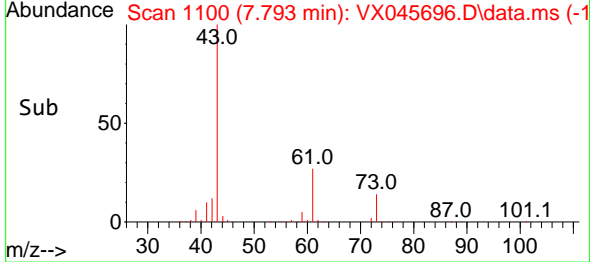
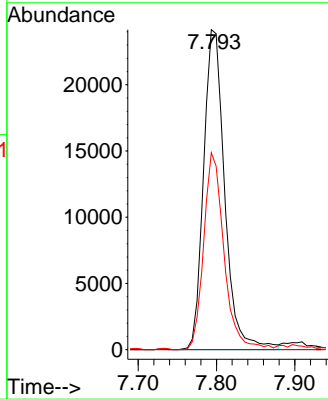
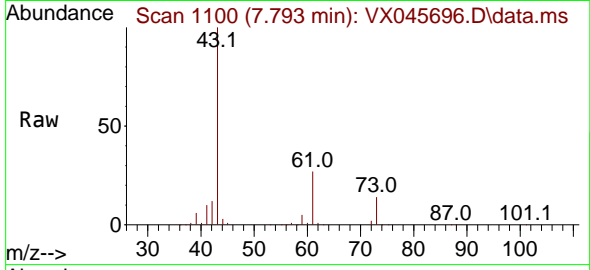


#48
 Methyl methacrylate
 Concen: 38.260 ug/l
 RT: 7.793 min Scan# 1100
 Delta R.T. 0.104 min
 Lab File: VX045696.D
 Acq: 10 Apr 2025 14:13

Instrument : MSVOA_X
 ClientSampleId : PB167534ZHE#02

Tgt Ion: 41 Resp: 45265

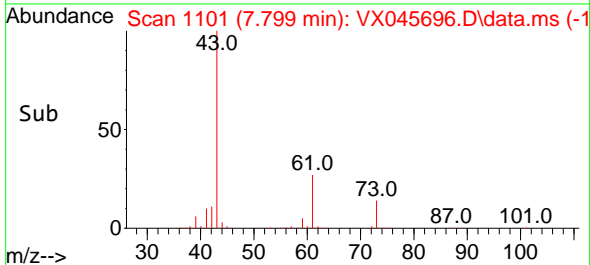
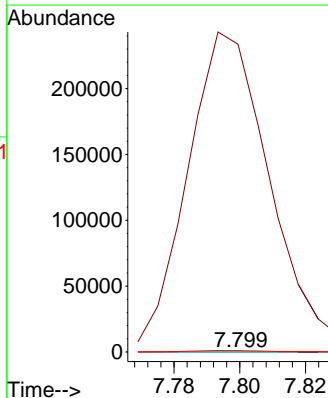
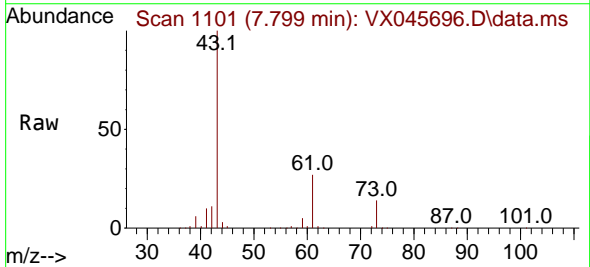
Ion	Ratio	Lower	Upper
41	100		
69	0.0	58.2	87.2#
39	59.2	53.6	80.4

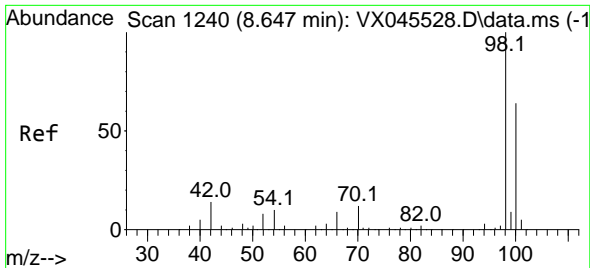


#49
 1,4-Dioxane
 Concen: 2.009 ug/l
 RT: 7.799 min Scan# 1101
 Delta R.T. 0.140 min
 Lab File: VX045696.D
 Acq: 10 Apr 2025 14:13

Tgt Ion: 88 Resp: 43

Ion	Ratio	Lower	Upper
88	100		
43	1023955.8	32.2	48.4#
58	4439.5	58.6	88.0#

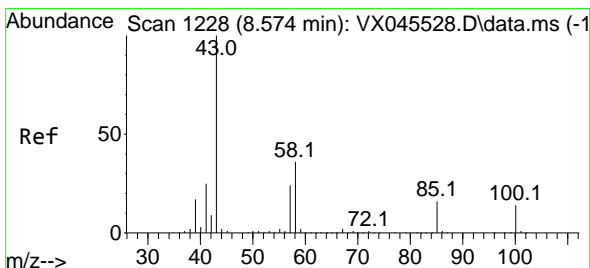
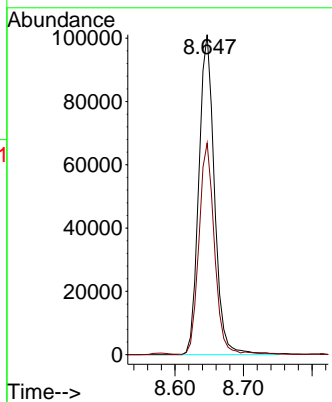
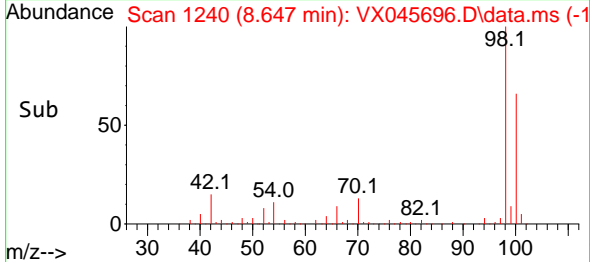
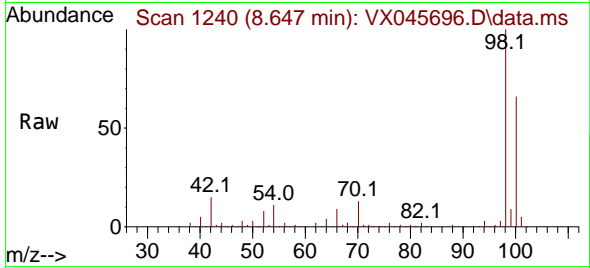




#50
 Toluene-d8
 Concen: 51.792 ug/l
 RT: 8.647 min Scan# 11
 Delta R.T. 0.000 min
 Lab File: VX045696.D
 Acq: 10 Apr 2025 14:13

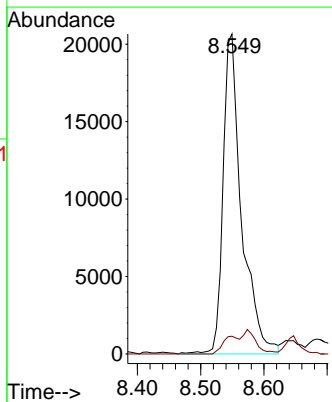
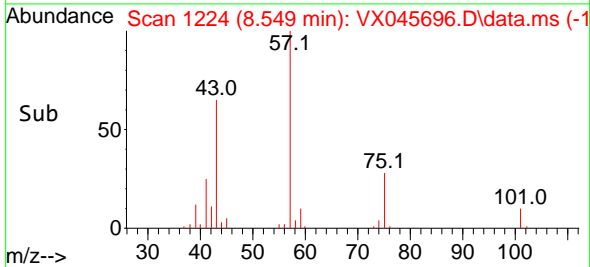
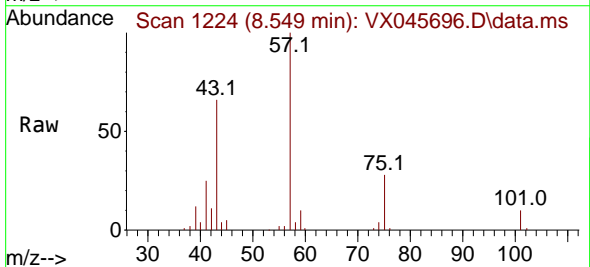
Instrument : MSVOA_X
 ClientSampleId : PB167534ZHE#02

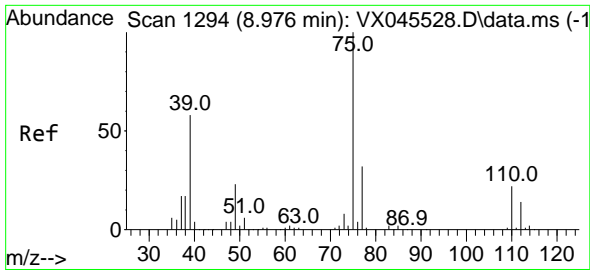
Tgt Ion: 98 Resp: 160621
 Ion Ratio Lower Upper
 98 100
 100 65.4 52.2 78.4



#51
 4-Methyl-2-Pentanone
 Concen: 27.592 ug/l
 RT: 8.549 min Scan# 1224
 Delta R.T. -0.024 min
 Lab File: VX045696.D
 Acq: 10 Apr 2025 14:13

Tgt Ion: 43 Resp: 41913
 Ion Ratio Lower Upper
 43 100
 58 5.0 28.5 42.7#

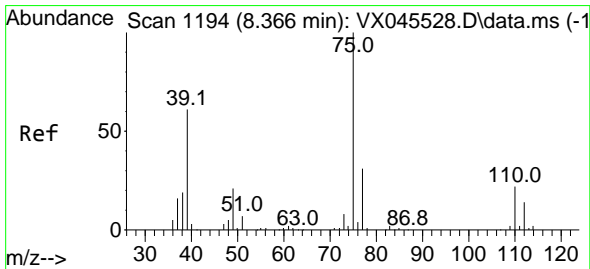
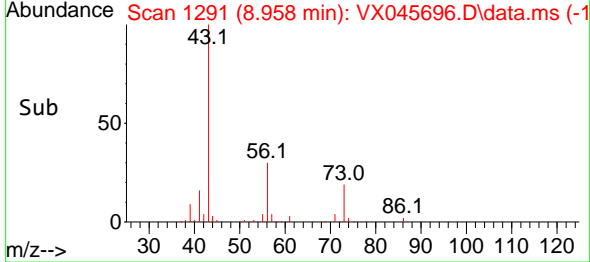
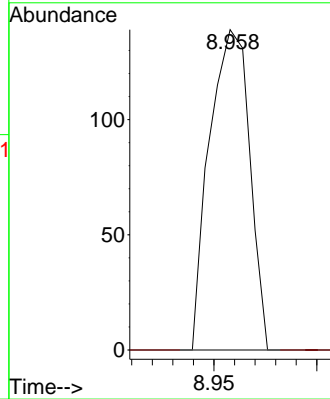
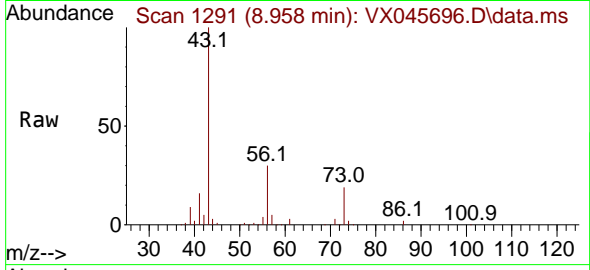




#53
 t-1,3-Dichloropropene
 Concen: 2.423 ug/l
 RT: 8.958 min Scan# 1124
 Delta R.T. -0.018 min
 Lab File: VX045696.D
 Acq: 10 Apr 2025 14:13

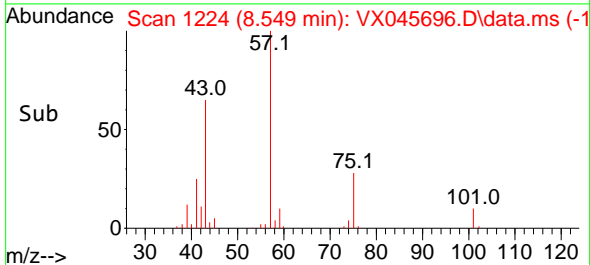
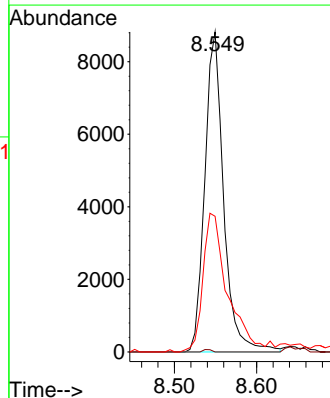
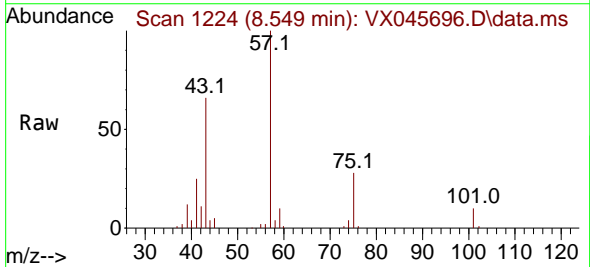
Instrument : MSVOA_X
 ClientSampleId : PB167534ZHE#02

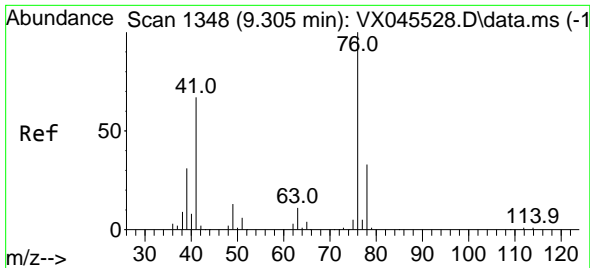
Tgt Ion: 75 Resp: 189
 Ion Ratio Lower Upper
 75 100
 77 0.0 25.4 38.0#



#54
 cis-1,3-Dichloropropene
 Concen: 10.666 ug/l
 RT: 8.549 min Scan# 1224
 Delta R.T. 0.183 min
 Lab File: VX045696.D
 Acq: 10 Apr 2025 14:13

Tgt Ion: 75 Resp: 14047
 Ion Ratio Lower Upper
 75 100
 77 0.0 24.6 36.8#
 39 42.4 48.4 72.6#

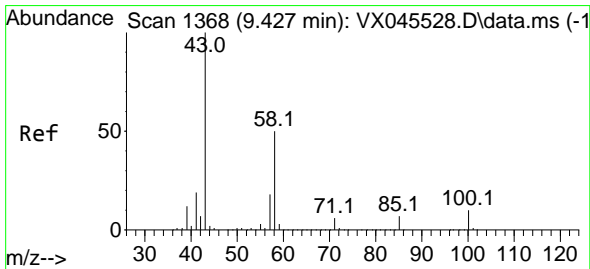
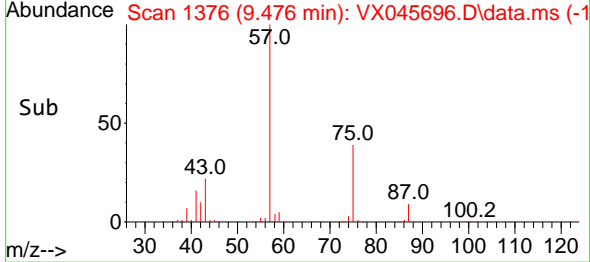
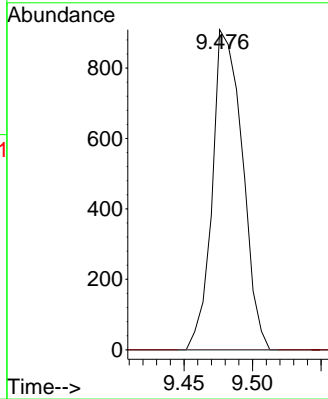
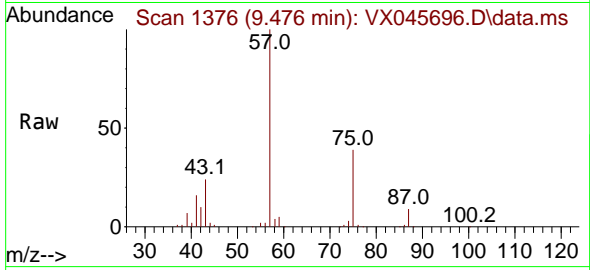




#57
 1,3-Dichloropropane
 Concen: 0.901 ug/l
 RT: 9.476 min Scan# 11
 Delta R.T. 0.171 min
 Lab File: VX045696.D
 Acq: 10 Apr 2025 14:13

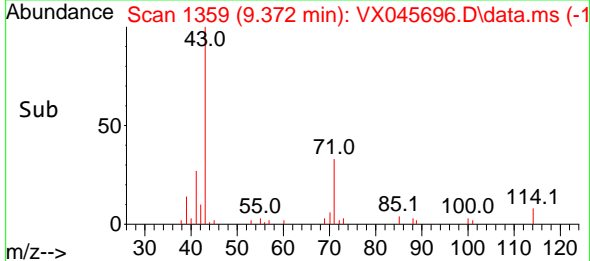
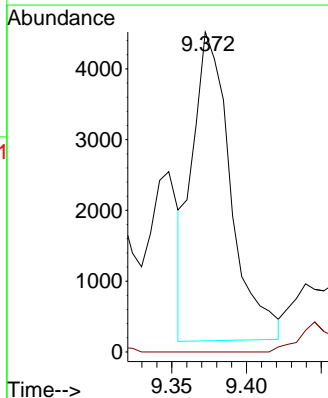
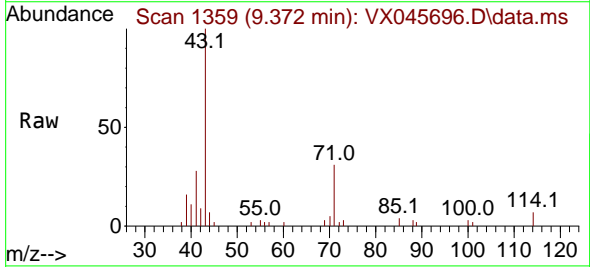
Instrument : MSVOA_X
 ClientSampleId : PB167534ZHE#02

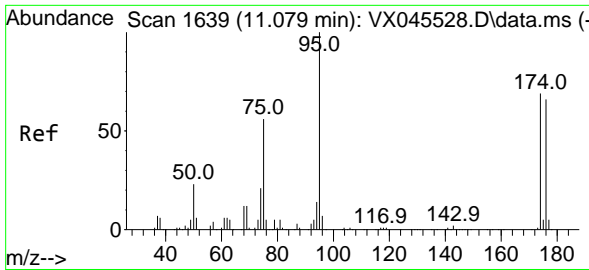
Tgt Ion: 76 Resp: 1386
 Ion Ratio Lower Upper
 76 100
 78 0.0 26.0 39.0#



#59
 2-Hexanone
 Concen: 6.922 ug/l
 RT: 9.372 min Scan# 1359
 Delta R.T. -0.055 min
 Lab File: VX045696.D
 Acq: 10 Apr 2025 14:13

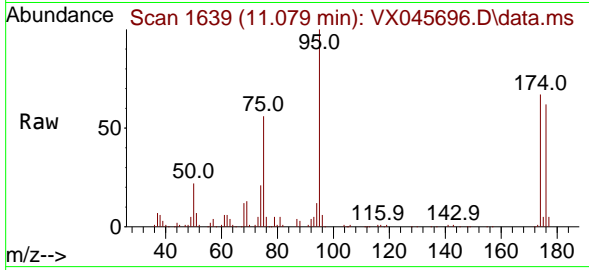
Tgt Ion: 43 Resp: 7786
 Ion Ratio Lower Upper
 43 100
 58 0.0 24.9 74.6#



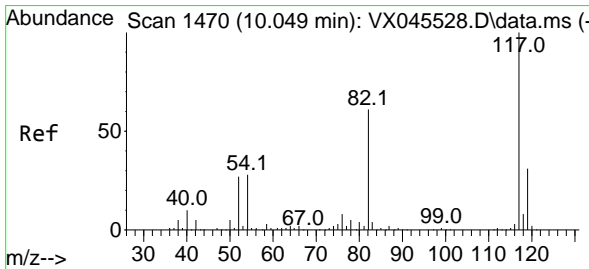
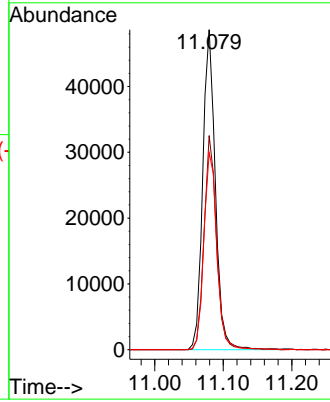
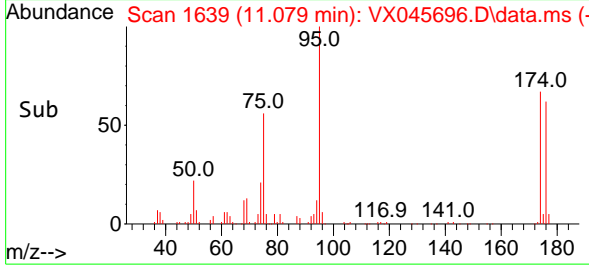


#62
 4-Bromofluorobenzene
 Concen: 55.176 ug/l
 RT: 11.079 min Scan# 1639
 Delta R.T. 0.000 min
 Lab File: VX045696.D
 Acq: 10 Apr 2025 14:13

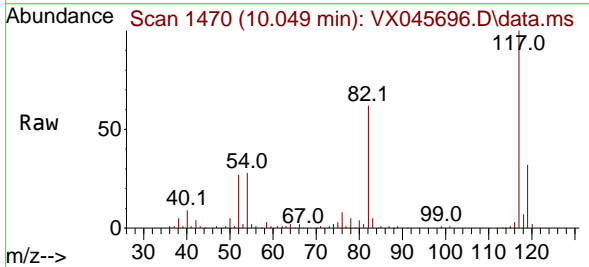
Instrument : MSVOA_X
 ClientSampleId : PB167534ZHE#02



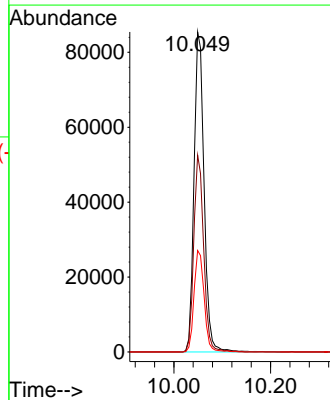
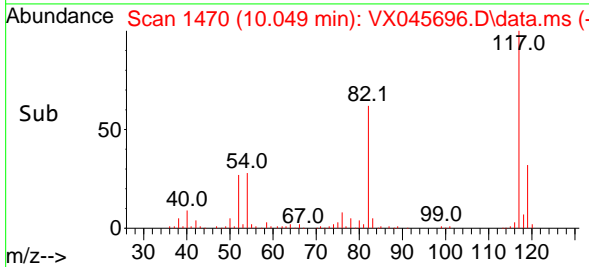
Tgt Ion: 95 Resp: 62329
 Ion Ratio Lower Upper
 95 100
 174 65.9 0.0 135.8
 176 63.9 0.0 131.4

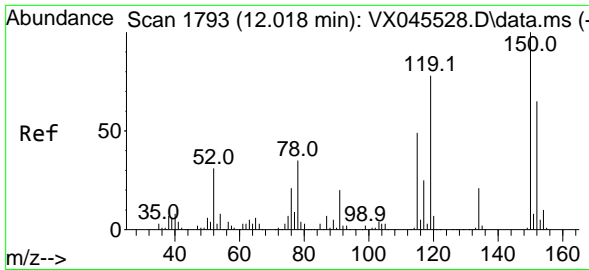


#63
 Chlorobenzene-d5
 Concen: 50.000 ug/l
 RT: 10.049 min Scan# 1470
 Delta R.T. 0.000 min
 Lab File: VX045696.D
 Acq: 10 Apr 2025 14:13



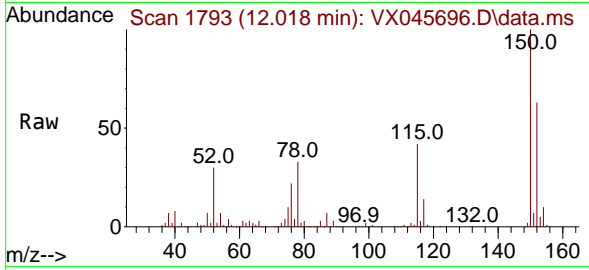
Tgt Ion: 117 Resp: 122789
 Ion Ratio Lower Upper
 117 100
 82 61.5 49.2 73.8
 119 31.7 25.1 37.7



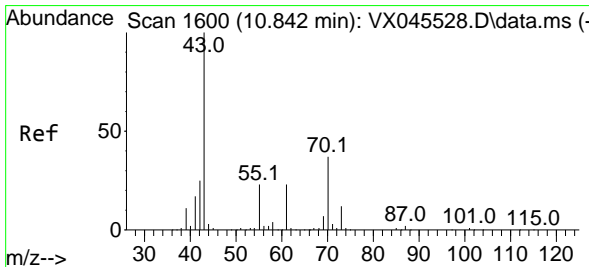
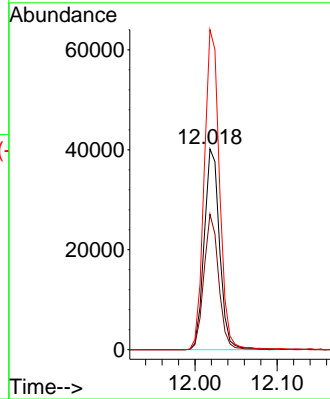
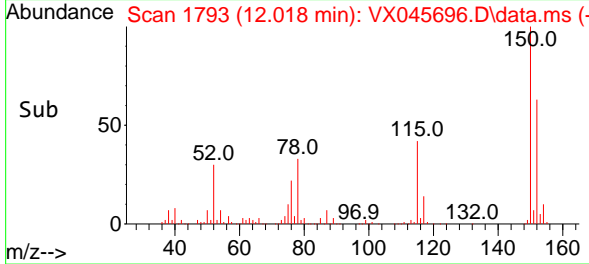


#72
 1,4-Dichlorobenzene-d4
 Concen: 50.000 ug/l
 RT: 12.018 min Scan# 11
 Delta R.T. 0.000 min
 Lab File: VX045696.D
 Acq: 10 Apr 2025 14:13

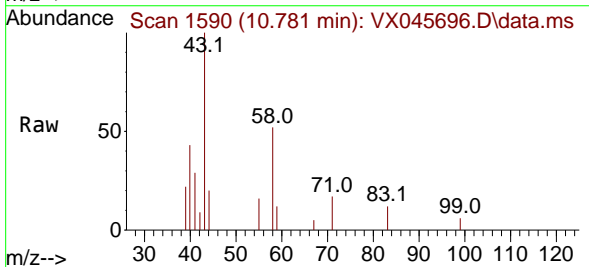
Instrument :
 MSVOA_X
 ClientSampleId :
 PB167534ZHE#02



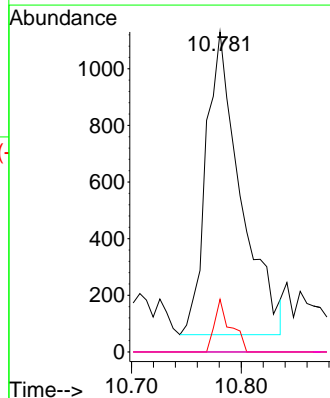
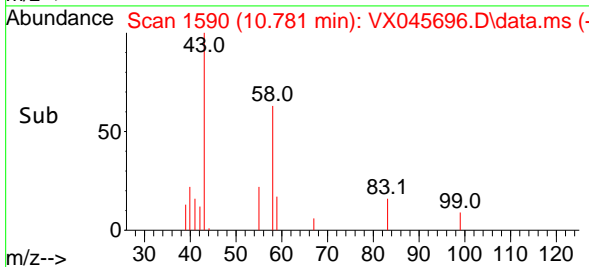
Tgt Ion:152 Resp: 52291
 Ion Ratio Lower Upper
 152 100
 115 64.8 46.9 140.7
 150 158.7 0.0 349.4

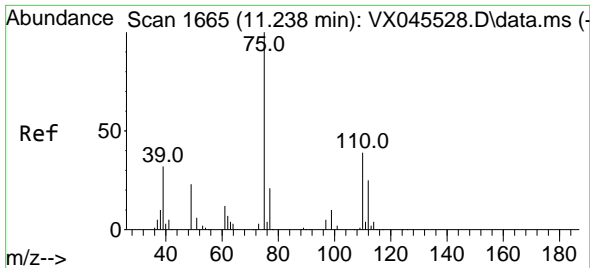


#74
 N-amy1 acetate
 Concen: 1.165 ug/l
 RT: 10.781 min Scan# 1590
 Delta R.T. -0.061 min
 Lab File: VX045696.D
 Acq: 10 Apr 2025 14:13



Tgt Ion: 43 Resp: 2334
 Ion Ratio Lower Upper
 43 100
 70 0.0 30.1 45.1#
 55 8.1 18.3 27.5#
 61 0.0 17.5 26.3#

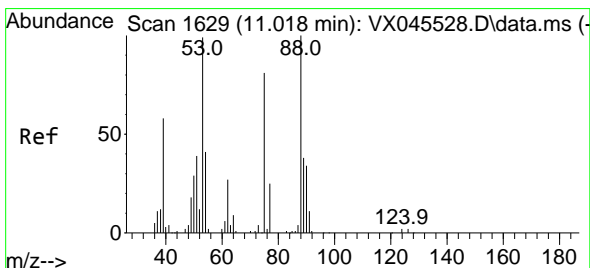
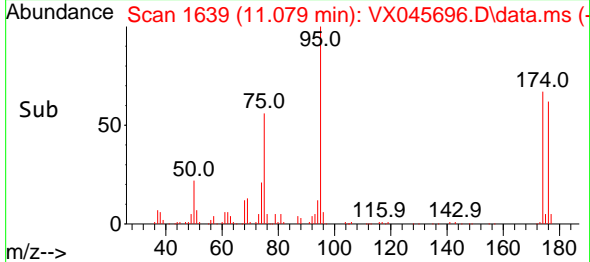
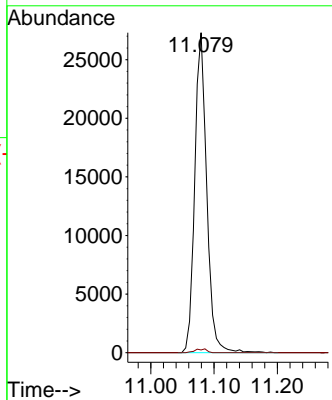
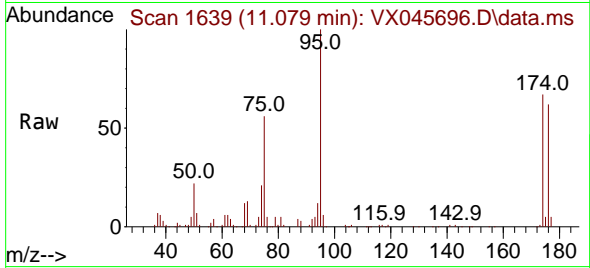




#76
 1,2,3-Trichloropropane
 Concen: 28.265 ug/l
 RT: 11.079 min Scan# 1639
 Delta R.T. -0.158 min
 Lab File: VX045696.D
 Acq: 10 Apr 2025 14:13

Instrument : MSVOA_X
 ClientSampleId : PB167534ZHE#02

Tgt Ion: 75 Resp: 36052
 Ion Ratio Lower Upper
 75 100
 77 1.1 20.0 59.9#



#81
 trans-1,4-Dichloro-2-butene
 Concen: 95.928 ug/l
 RT: 11.079 min Scan# 1639
 Delta R.T. 0.061 min
 Lab File: VX045696.D
 Acq: 10 Apr 2025 14:13

Tgt Ion: 75 Resp: 36052
 Ion Ratio Lower Upper
 75 100
 53 0.0 101.8 152.6#
 89 0.0 37.2 55.8#

