

Data Path : Z:\voasrv\HPCHEM1\MSVOA\_X\Data\VX041025\  
 Data File : VX045713.D  
 Acq On : 11 Apr 2025 03:36  
 Operator : JC/MD  
 Sample : VX0410MBL02  
 Misc : 5.0mL/MSVOA\_X/WATER  
 ALS Vial : 33 Sample Multiplier: 1

Instrument :  
 MSVOA\_X  
 ClientSampleId :  
 VX0410MBL02

Quant Time: Apr 11 04:04:58 2025  
 Quant Method : Z:\voasrv\HPCHEM1\MSVOA\_X\Method\82X040225W.M  
 Quant Title : SW846 8260  
 QLast Update : Wed Apr 02 03:11:43 2025  
 Response via : Initial Calibration

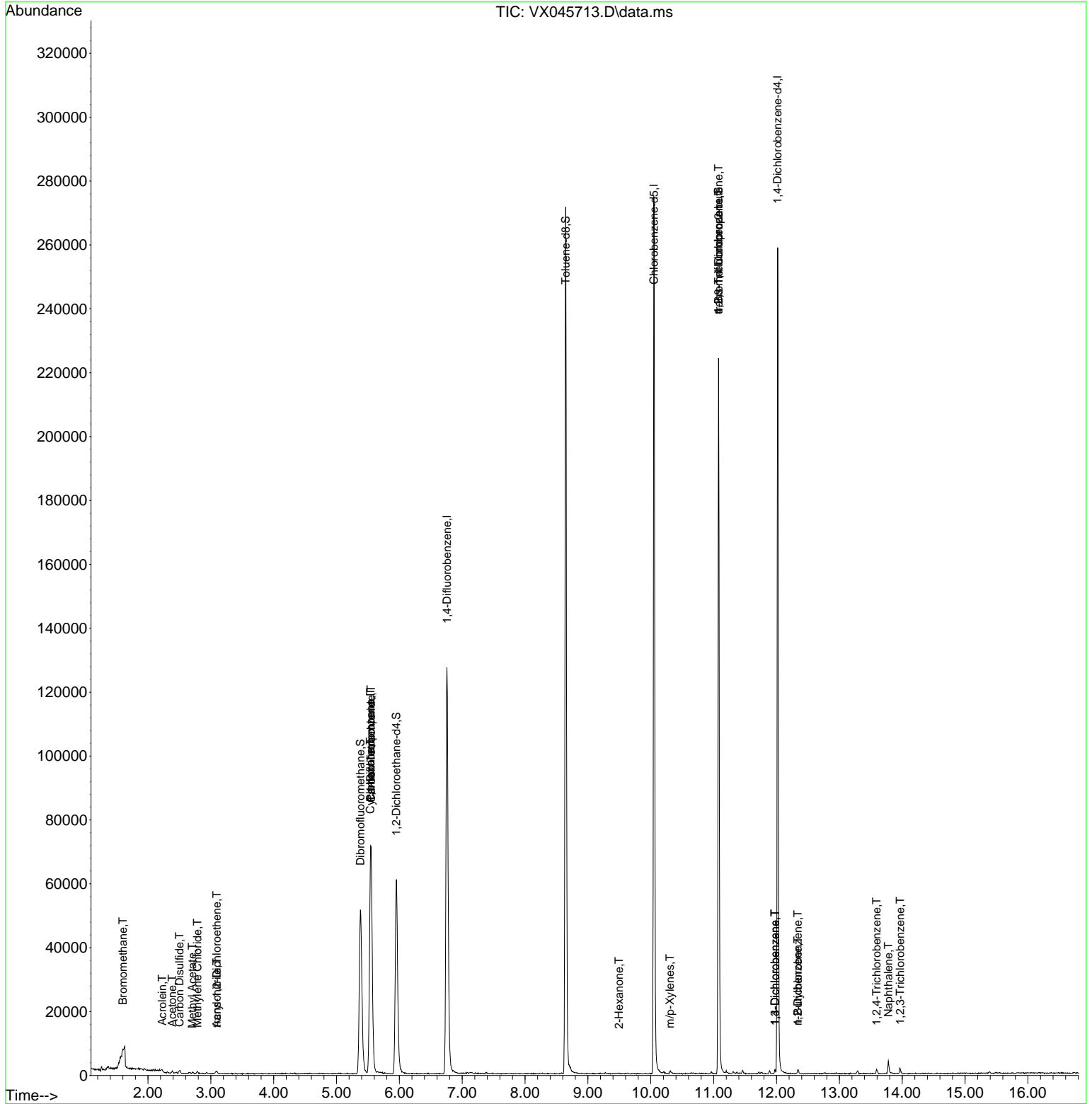
Compound	R.T.	QIon	Response	Conc	Units	Dev(Min)
-----						
Internal Standards						
1) Pentafluorobenzene	5.544	168	62792	50.000	ug/l	0.00
34) 1,4-Difluorobenzene	6.757	114	122230	50.000	ug/l	0.00
63) Chlorobenzene-d5	10.049	117	114669	50.000	ug/l	0.00
72) 1,4-Dichlorobenzene-d4	12.018	152	48374	50.000	ug/l	0.00
System Monitoring Compounds						
33) 1,2-Dichloroethane-d4	5.952	65	62812	54.700	ug/l	0.00
Spiked Amount	50.000	Range 74 - 125	Recovery	=	109.400%	
35) Dibromofluoromethane	5.379	113	44305	51.088	ug/l	0.00
Spiked Amount	50.000	Range 75 - 124	Recovery	=	102.180%	
50) Toluene-d8	8.647	98	154325	50.984	ug/l	0.00
Spiked Amount	50.000	Range 86 - 113	Recovery	=	101.960%	
62) 4-Bromofluorobenzene	11.079	95	58476	53.036	ug/l	0.00
Spiked Amount	50.000	Range 77 - 121	Recovery	=	106.080%	
Target Compounds						
						Qvalue
5) Bromomethane	1.599	94	248	0.592	ug/l #	62
13) Acrolein	2.227	56	195	0.918	ug/l	88
15) Acrylonitrile	3.093	53	317	0.651	ug/l #	78
16) Acetone	2.386	43	781	1.656	ug/l	96
17) Carbon Disulfide	2.502	76	1256	0.675	ug/l #	95
18) Methyl Acetate	2.703	43	436	0.402	ug/l #	77
20) Methylene Chloride	2.788	84	300	0.340	ug/l #	76
21) trans-1,2-Dichloroethene	3.093	96	247	0.321	ug/l #	74
31) Cyclohexane	5.538	56	2055	1.459	ug/l #	17
36) 1,1-Dichloropropene	5.544	75	6515	5.564	ug/l #	51
38) Carbon Tetrachloride	5.550	117	7391	5.840	ug/l #	16
59) 2-Hexanone	9.494	43	254	0.231	ug/l #	28
68) m/p-Xylenes	10.305	106	380	0.238	ug/l	77
76) 1,2,3-Trichloropropane	11.079	75	33727	28.583	ug/l #	37
81) trans-1,4-Dichloro-2-b...	11.079	75	33727	97.008	ug/l #	1
87) 1,3-Dichlorobenzene	11.975	146	477	0.293	ug/l	91
88) 1,4-Dichlorobenzene	11.975	146	477	0.289	ug/l	93
89) n-Butylbenzene	12.341	91	747	0.268	ug/l #	75
91) 1,2-Dichlorobenzene	12.341	146	368	0.227	ug/l #	75
93) 1,2,4-Trichlorobenzene	13.591	180	543	0.602	ug/l	94
95) Naphthalene	13.780	128	3321	0.989	ug/l #	93
96) 1,2,3-Trichlorobenzene	13.969	180	645	0.683	ug/l	96
-----						

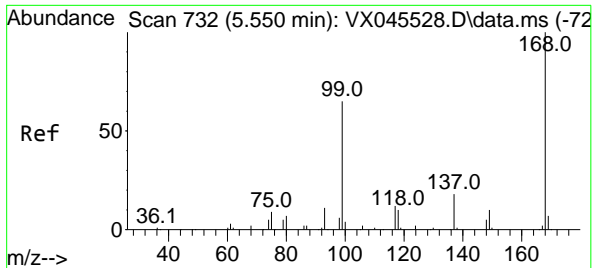
(#) = qualifier out of range (m) = manual integration (+) = signals summed

Data Path : Z:\voasrv\HPCHEM1\MSVOA\_X\Data\VX041025\  
 Data File : VX045713.D  
 Acq On : 11 Apr 2025 03:36  
 Operator : JC/MD  
 Sample : VX0410MBL02  
 Misc : 5.0mL/MSVOA\_X/WATER  
 ALS Vial : 33 Sample Multiplier: 1

**Instrument :**  
 MSVOA\_X  
**ClientSampleId :**  
 VX0410MBL02

Quant Time: Apr 11 04:04:58 2025  
 Quant Method : Z:\voasrv\HPCHEM1\MSVOA\_X\Method\82X040225W.M  
 Quant Title : SW846 8260  
 QLast Update : Wed Apr 02 03:11:43 2025  
 Response via : Initial Calibration

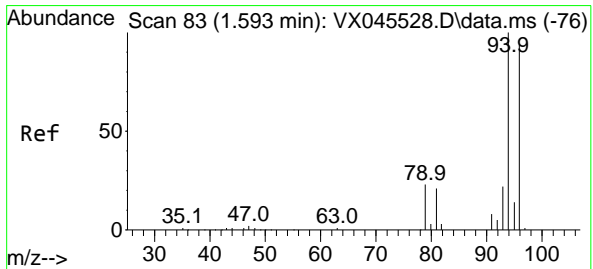
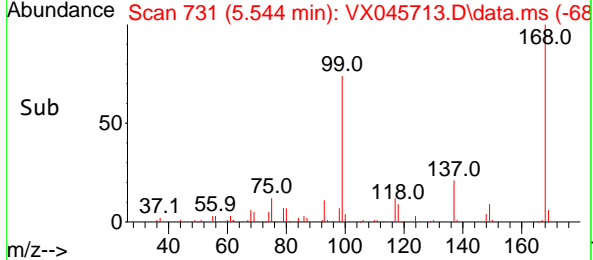
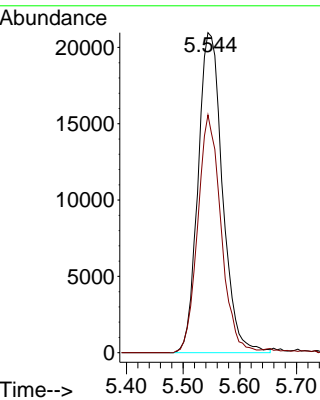
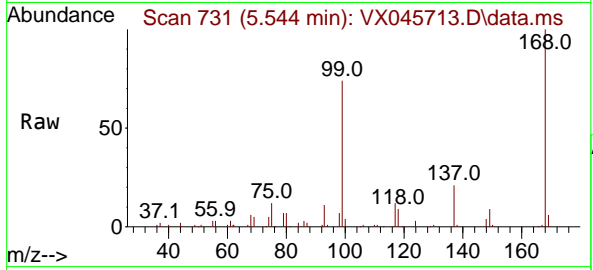




#1  
 Pentafluorobenzene  
 Concen: 50.000 ug/l  
 RT: 5.544 min Scan# 71  
 Delta R.T. -0.006 min  
 Lab File: VX045713.D  
 Acq: 11 Apr 2025 03:36

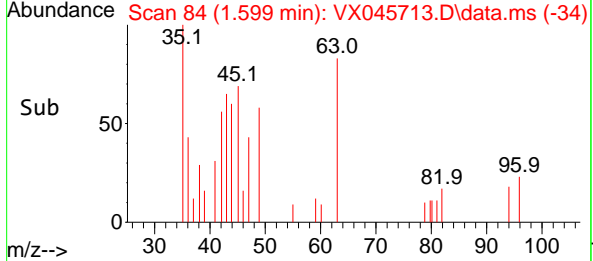
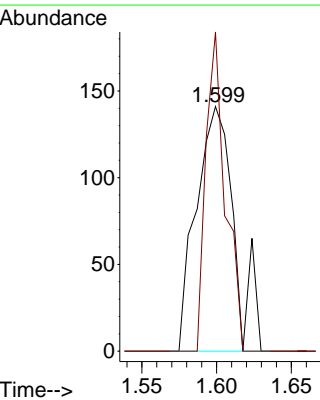
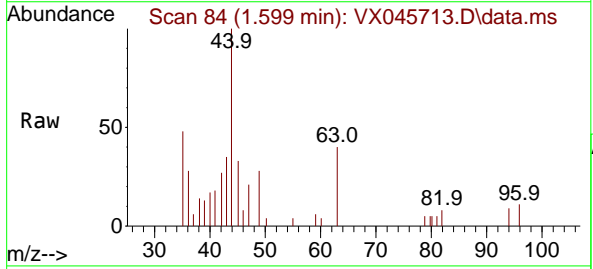
Instrument : MSVOA\_X  
 ClientSampleId : VX0410MBL02

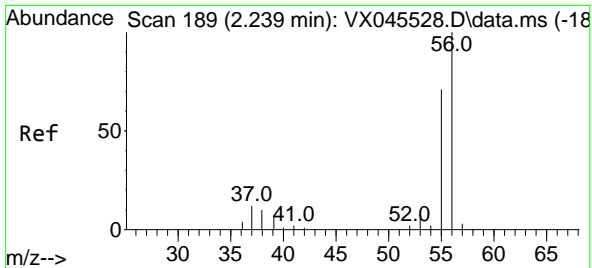
Tgt Ion:168 Resp: 62792  
 Ion Ratio Lower Upper  
 168 100  
 99 74.3 52.3 78.5



#5  
 Bromomethane  
 Concen: 0.592 ug/l  
 RT: 1.599 min Scan# 84  
 Delta R.T. 0.006 min  
 Lab File: VX045713.D  
 Acq: 11 Apr 2025 03:36

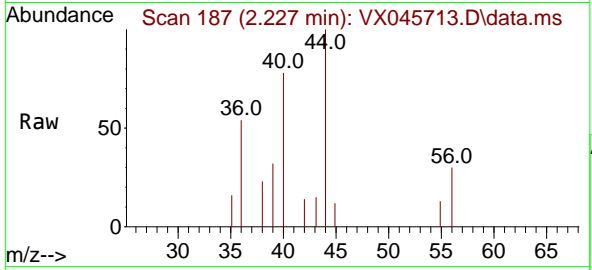
Tgt Ion: 94 Resp: 248  
 Ion Ratio Lower Upper  
 94 100  
 96 130.5 74.8 112.2#



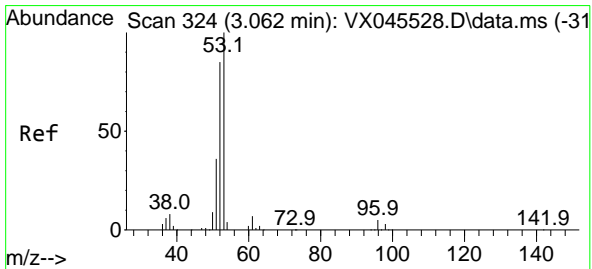
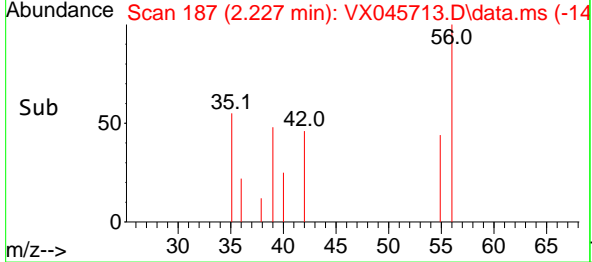
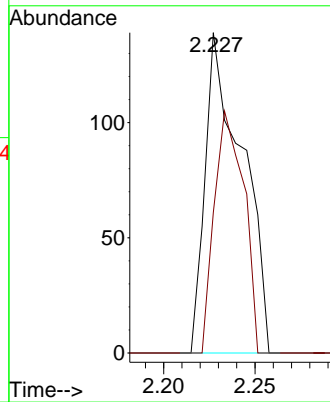


#13  
 Acrolein  
 Concen: 0.918 ug/l  
 RT: 2.227 min Scan# 11  
 Delta R.T. -0.012 min  
 Lab File: VX045713.D  
 Acq: 11 Apr 2025 03:36

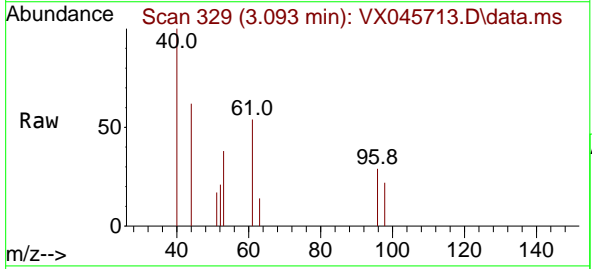
Instrument : MSVOA\_X  
 ClientSampleId : VX0410MBL02



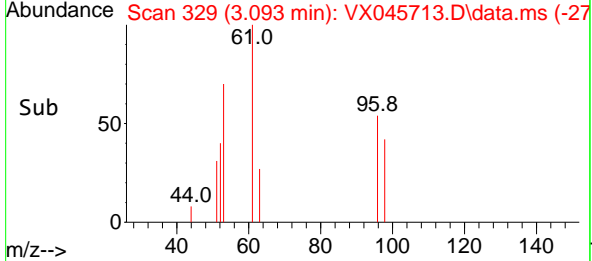
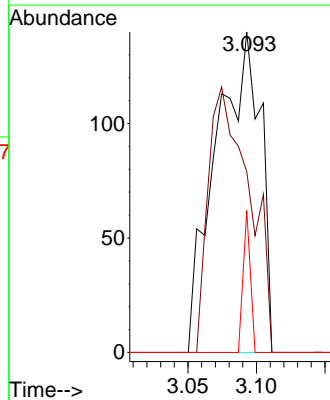
Tgt Ion: 56 Resp: 195  
 Ion Ratio Lower Upper  
 56 100  
 55 60.0 56.2 84.2

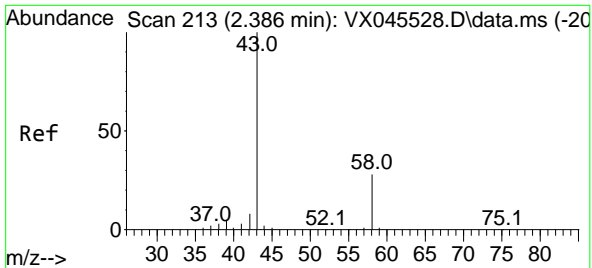


#15  
 Acrylonitrile  
 Concen: 0.651 ug/l  
 RT: 3.093 min Scan# 329  
 Delta R.T. 0.030 min  
 Lab File: VX045713.D  
 Acq: 11 Apr 2025 03:36



Tgt Ion: 53 Resp: 317  
 Ion Ratio Lower Upper  
 53 100  
 52 76.0 67.4 101.2  
 51 7.3 29.9 44.9#

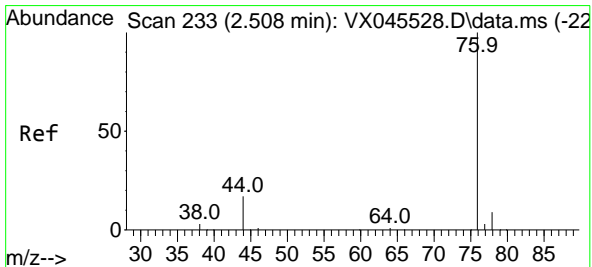
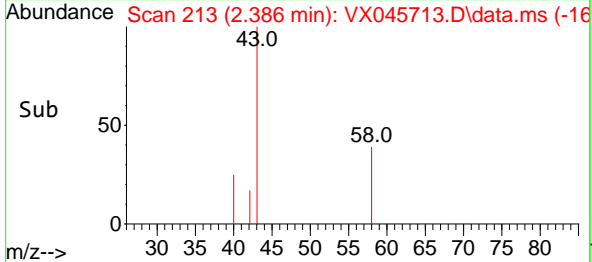
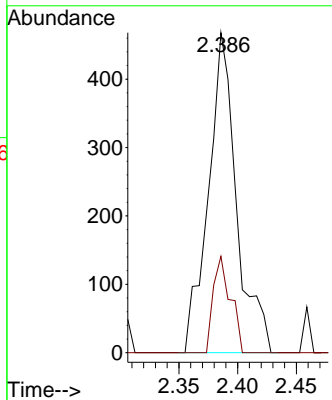
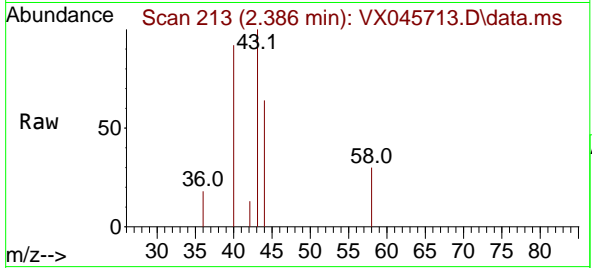




#16  
 Acetone  
 Concen: 1.656 ug/l  
 RT: 2.386 min Scan# 21  
 Delta R.T. -0.000 min  
 Lab File: VX045713.D  
 Acq: 11 Apr 2025 03:36

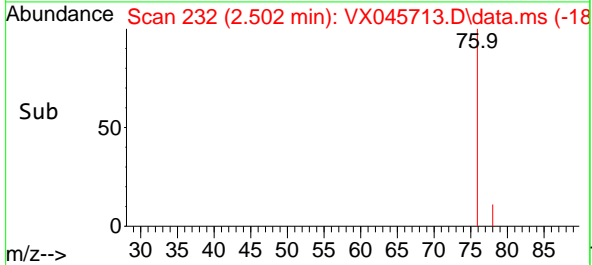
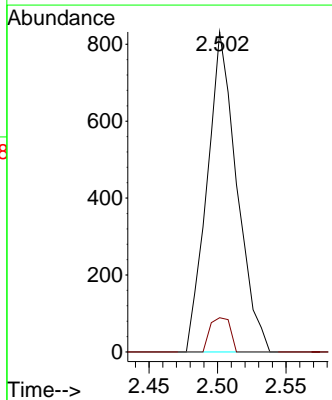
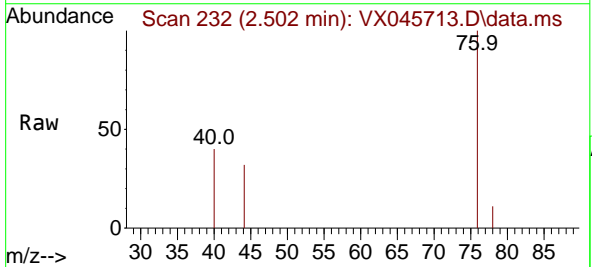
Instrument :  
 MSVOA\_X  
 ClientSampleId :  
 VX0410MBL02

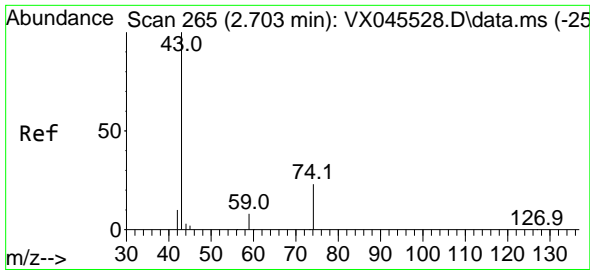
Tgt Ion: 43 Resp: 781  
 Ion Ratio Lower Upper  
 43 100  
 58 30.1 22.3 33.5



#17  
 Carbon Disulfide  
 Concen: 0.675 ug/l  
 RT: 2.502 min Scan# 232  
 Delta R.T. -0.006 min  
 Lab File: VX045713.D  
 Acq: 11 Apr 2025 03:36

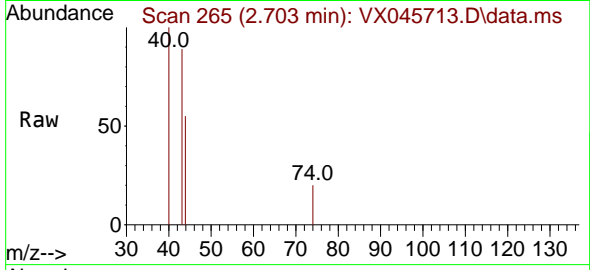
Tgt Ion: 76 Resp: 1256  
 Ion Ratio Lower Upper  
 76 100  
 78 10.7 7.0 10.6#



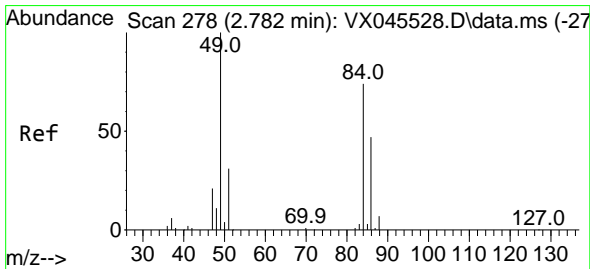
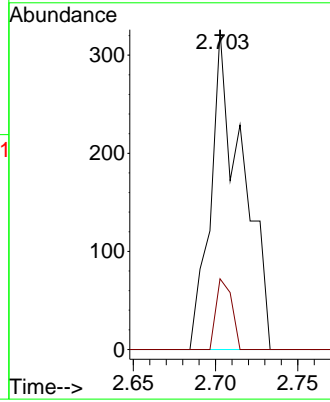
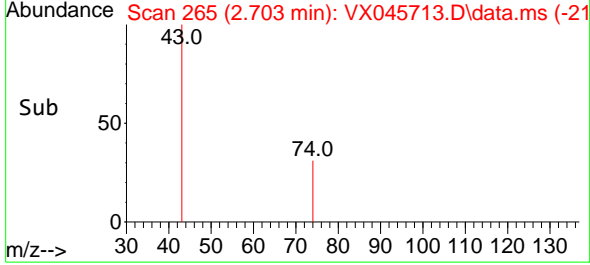


#18  
 Methyl Acetate  
 Concen: 0.402 ug/l  
 RT: 2.703 min Scan# 201  
 Delta R.T. -0.000 min  
 Lab File: VX045713.D  
 Acq: 11 Apr 2025 03:36

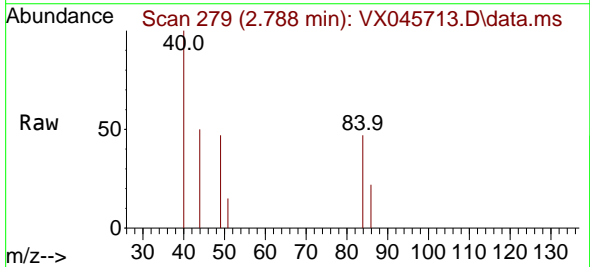
Instrument : MSVOA\_X  
 ClientSampleId : VX0410MBL02



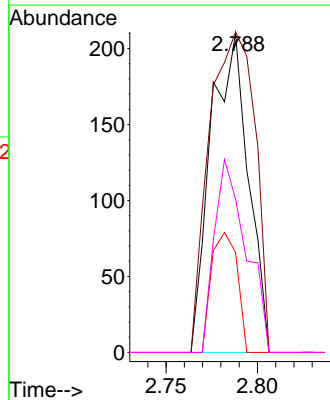
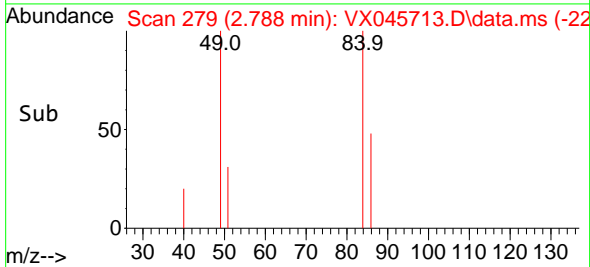
Tgt Ion: 43 Resp: 436  
 Ion Ratio Lower Upper  
 43 100  
 74 11.0 17.5 26.3#

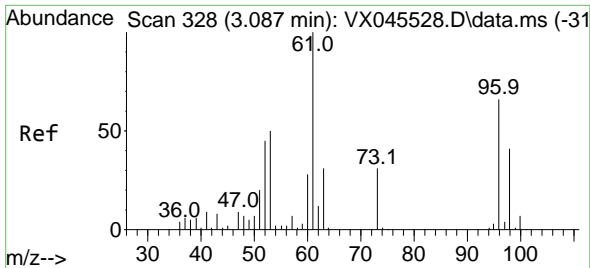


#20  
 Methylene Chloride  
 Concen: 0.340 ug/l  
 RT: 2.788 min Scan# 279  
 Delta R.T. 0.006 min  
 Lab File: VX045713.D  
 Acq: 11 Apr 2025 03:36



Tgt Ion: 84 Resp: 300  
 Ion Ratio Lower Upper  
 84 100  
 49 100.5 107.5 161.3#  
 51 31.4 33.0 49.6#  
 86 48.1 50.1 75.1#



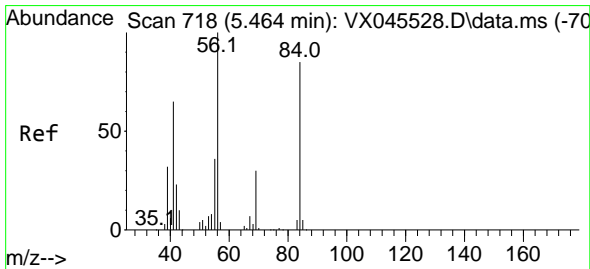
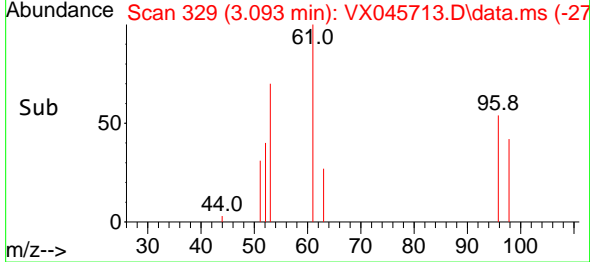
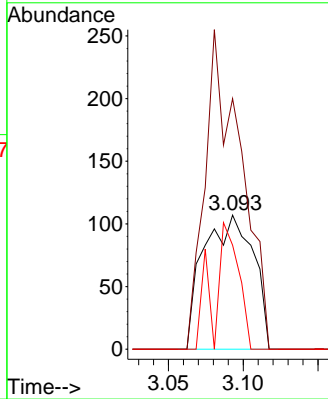
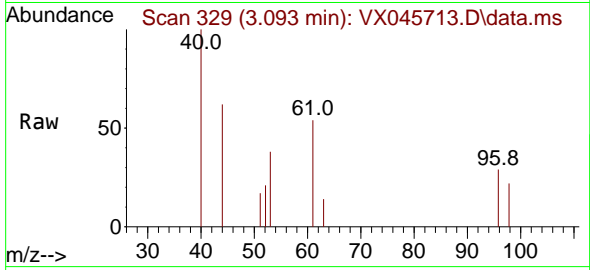


#21  
 trans-1,2-Dichloroethene  
 Concen: 0.321 ug/l  
 RT: 3.093 min Scan# 31  
 Delta R.T. 0.006 min  
 Lab File: VX045713.D  
 Acq: 11 Apr 2025 03:36

Instrument :  
 MSVOA\_X  
 ClientSampleId :  
 VX0410MBL02

Tgt Ion: 96 Resp: 247

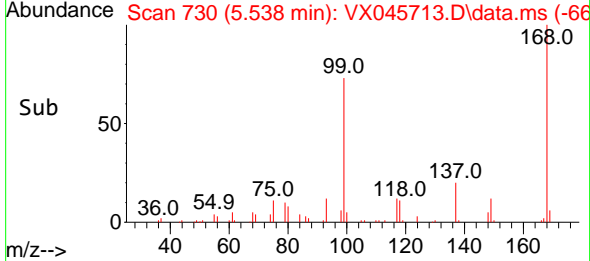
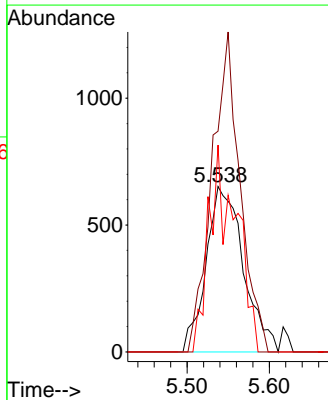
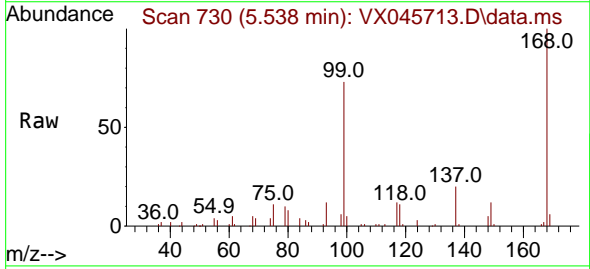
Ion	Ratio	Lower	Upper
96	100		
61	186.9	121.0	181.6#
98	77.6	49.7	74.5#

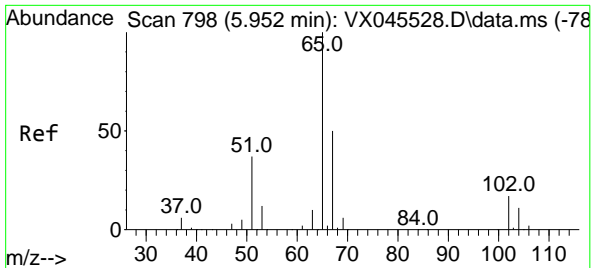


#31  
 Cyclohexane  
 Concen: 1.459 ug/l  
 RT: 5.538 min Scan# 730  
 Delta R.T. 0.073 min  
 Lab File: VX045713.D  
 Acq: 11 Apr 2025 03:36

Tgt Ion: 56 Resp: 2055

Ion	Ratio	Lower	Upper
56	100		
69	133.4	23.6	35.4#
84	125.0	67.7	101.5#





#33  
 1,2-Dichloroethane-d4  
 Concen: 54.700 ug/l  
 RT: 5.952 min Scan# 798  
 Delta R.T. -0.000 min  
 Lab File: VX045713.D  
 Acq: 11 Apr 2025 03:36

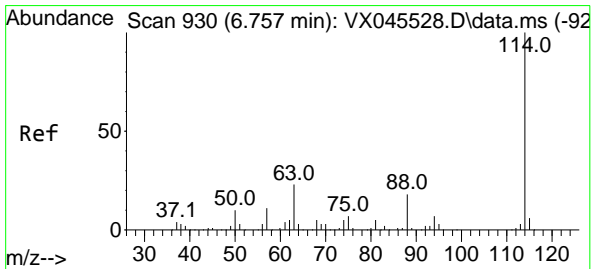
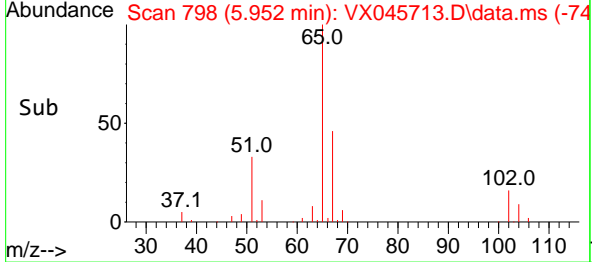
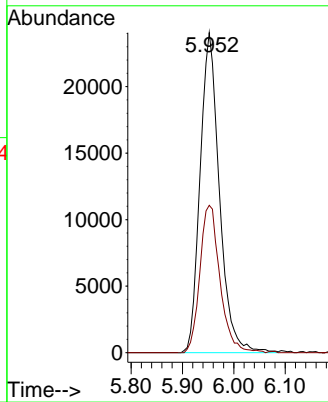
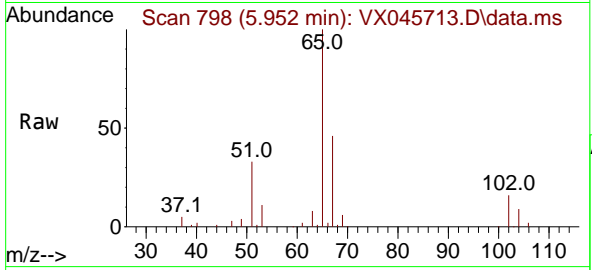
Instrument :

MSVOA\_X

ClientSampleId :

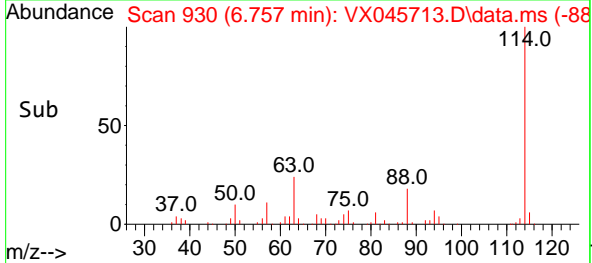
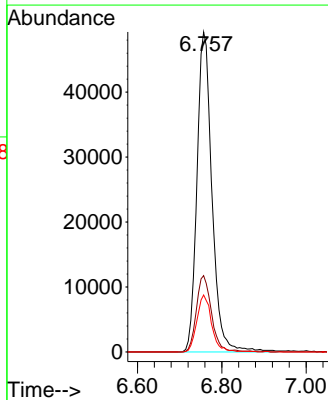
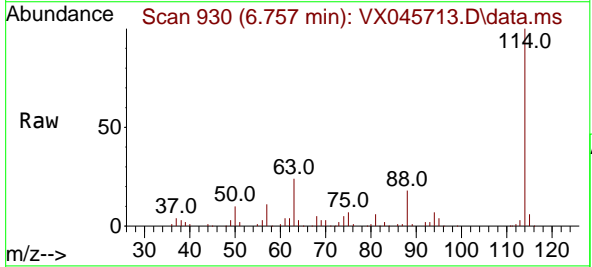
VX0410MBL02

Tgt Ion: 65 Resp: 62812  
 Ion Ratio Lower Upper  
 65 100  
 67 47.9 0.0 99.0

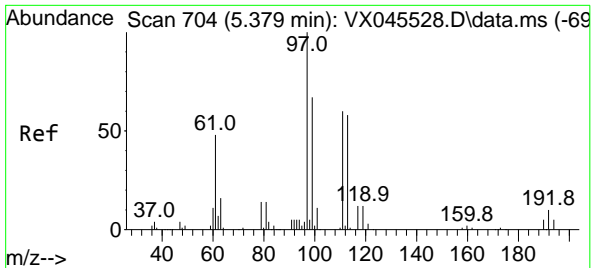


#34  
 1,4-Difluorobenzene  
 Concen: 50.000 ug/l  
 RT: 6.757 min Scan# 930  
 Delta R.T. -0.000 min  
 Lab File: VX045713.D  
 Acq: 11 Apr 2025 03:36

Tgt Ion: 114 Resp: 122230  
 Ion Ratio Lower Upper  
 114 100  
 63 23.8 0.0 46.8  
 88 17.8 0.0 35.4



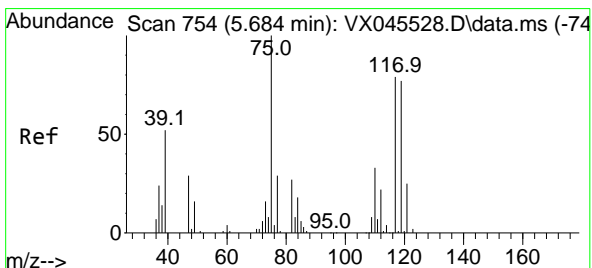
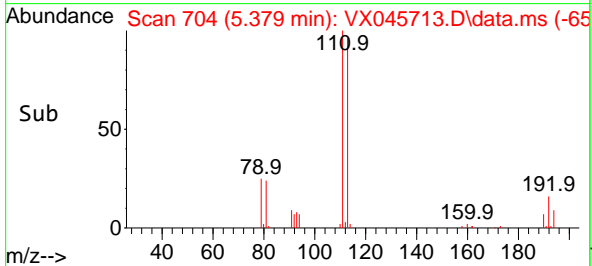
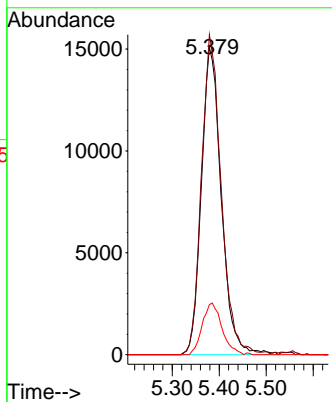
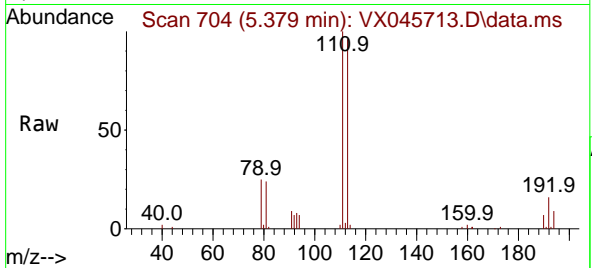




#35  
 Dibromofluoromethane  
 Concen: 51.088 ug/l  
 RT: 5.379 min Scan# 704  
 Delta R.T. -0.000 min  
 Lab File: VX045713.D  
 Acq: 11 Apr 2025 03:36

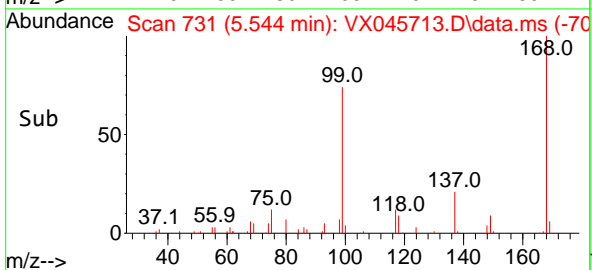
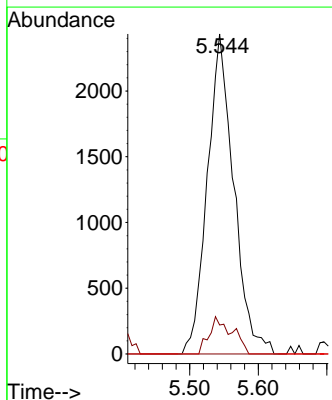
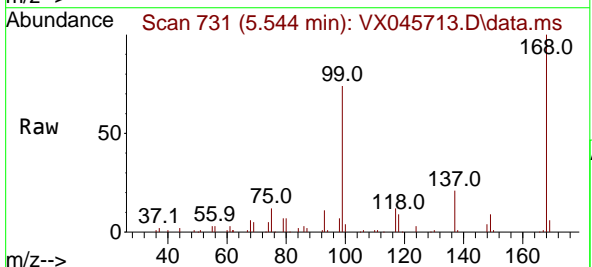
Instrument : MSVOA\_X  
 ClientSampleId : VX0410MBL02

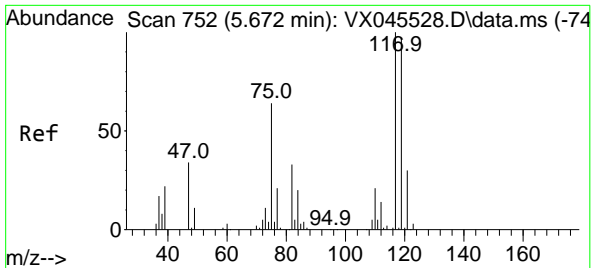
Tgt Ion	Resp	Lower	Upper
113	44305		
113	100		
111	103.3	81.8	122.6
192	16.6	13.8	20.6



#36  
 1,1-Dichloropropene  
 Concen: 5.564 ug/l  
 RT: 5.544 min Scan# 731  
 Delta R.T. -0.140 min  
 Lab File: VX045713.D  
 Acq: 11 Apr 2025 03:36

Tgt Ion	Resp	Lower	Upper
75	6515		
75	100		
110	10.1	16.9	50.6#
77	0.0	25.0	37.4#

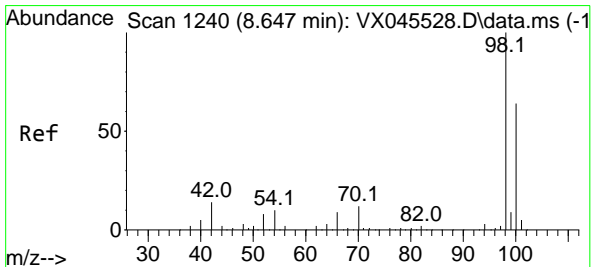
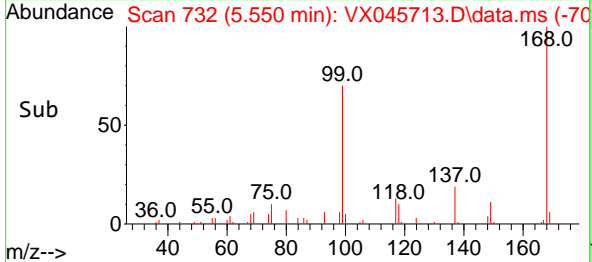
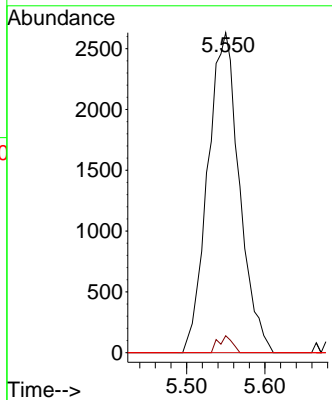
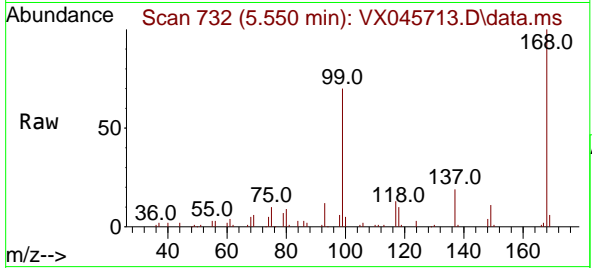




#38  
 Carbon Tetrachloride  
 Concen: 5.840 ug/l  
 RT: 5.550 min Scan# 71  
 Delta R.T. -0.122 min  
 Lab File: VX045713.D  
 Acq: 11 Apr 2025 03:36

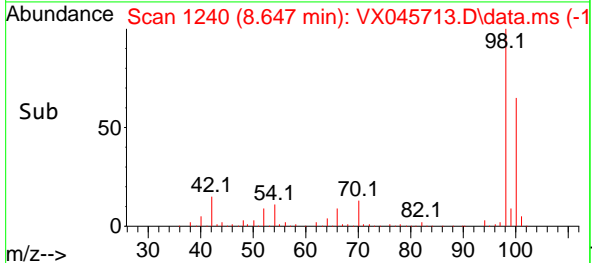
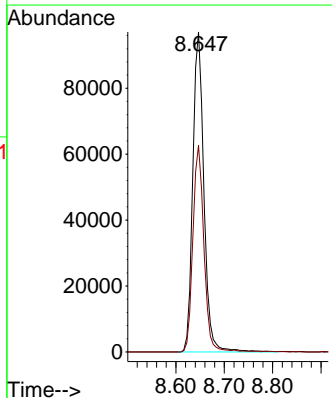
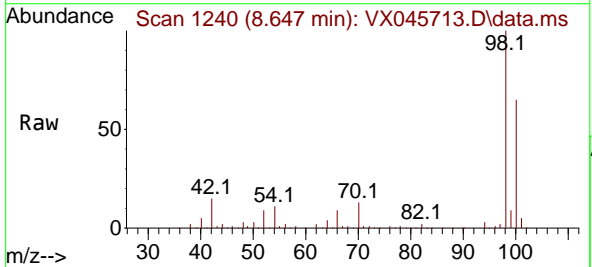
Instrument :  
 MSVOA\_X  
 ClientSampleId :  
 VX0410MBL02

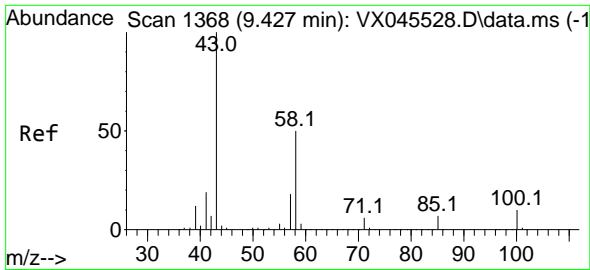
Tgt Ion:117 Resp: 7391  
 Ion Ratio Lower Upper  
 117 100  
 119 5.3 76.9 115.3#  
 121 0.0 24.2 36.2#



#50  
 Toluene-d8  
 Concen: 50.984 ug/l  
 RT: 8.647 min Scan# 1240  
 Delta R.T. -0.000 min  
 Lab File: VX045713.D  
 Acq: 11 Apr 2025 03:36

Tgt Ion: 98 Resp: 154325  
 Ion Ratio Lower Upper  
 98 100  
 100 64.3 52.2 78.4

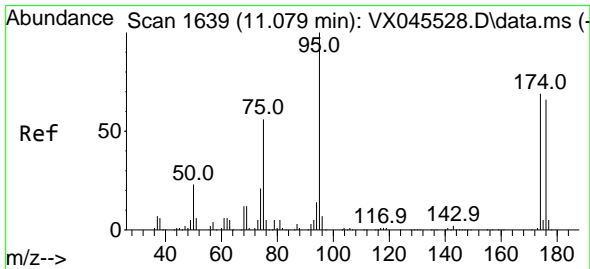
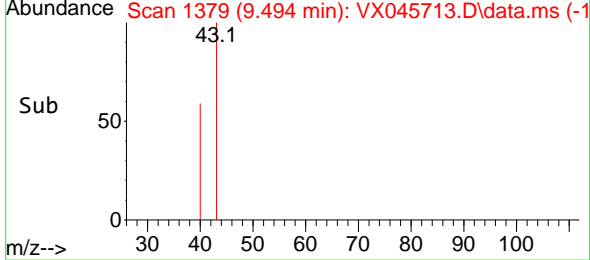
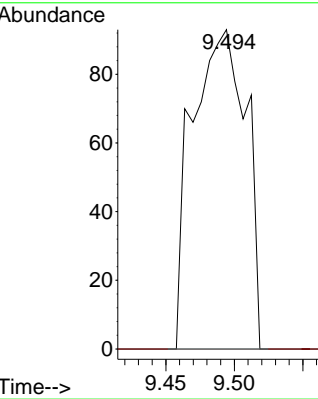
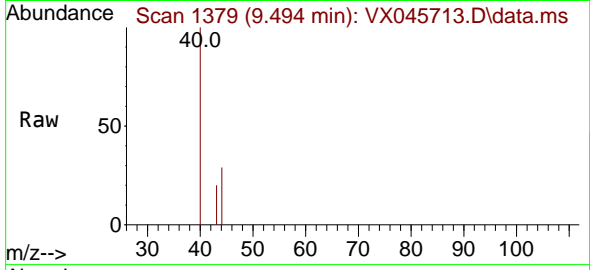




#59  
 2-Hexanone  
 Concen: 0.231 ug/l  
 RT: 9.494 min Scan# 11  
 Delta R.T. 0.067 min  
 Lab File: VX045713.D  
 Acq: 11 Apr 2025 03:36

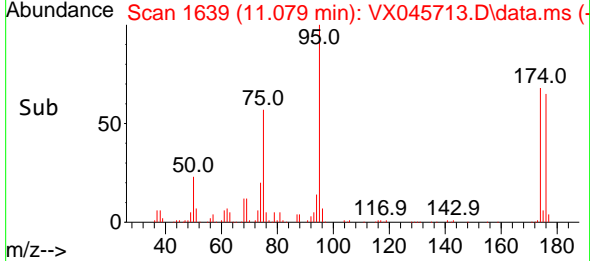
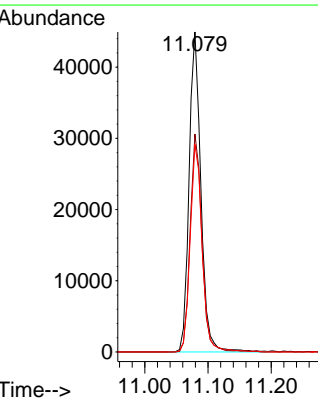
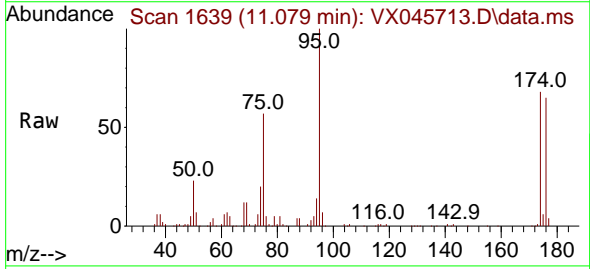
Instrument :  
 MSVOA\_X  
 ClientSampleId :  
 VX0410MBL02

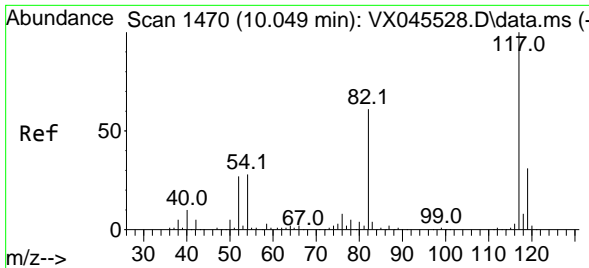
Tgt Ion: 43 Resp: 254  
 Ion Ratio Lower Upper  
 43 100  
 58 0.0 24.9 74.6#



#62  
 4-Bromofluorobenzene  
 Concen: 53.036 ug/l  
 RT: 11.079 min Scan# 1639  
 Delta R.T. 0.000 min  
 Lab File: VX045713.D  
 Acq: 11 Apr 2025 03:36

Tgt Ion: 95 Resp: 58476  
 Ion Ratio Lower Upper  
 95 100  
 174 68.0 0.0 135.8  
 176 65.8 0.0 131.4



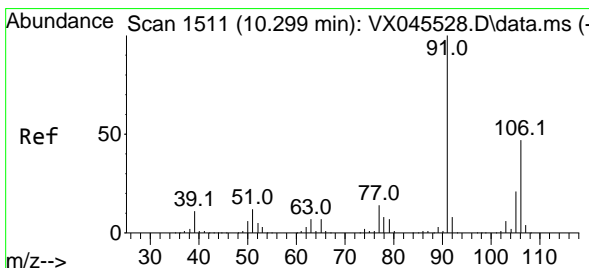
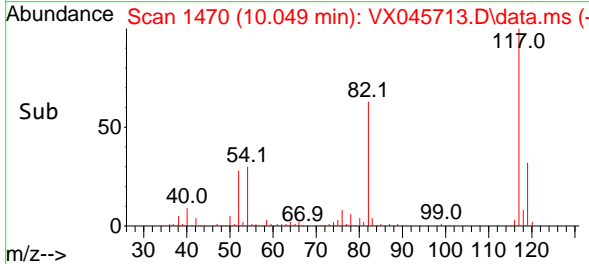
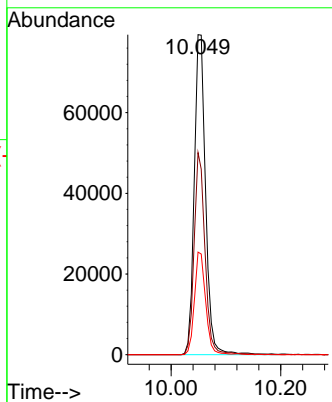
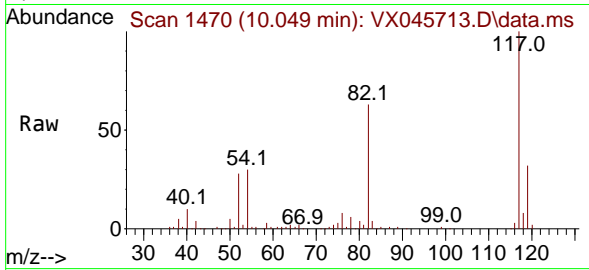


#63  
 Chlorobenzene-d5  
 Concen: 50.000 ug/l  
 RT: 10.049 min Scan# 1470  
 Delta R.T. 0.000 min  
 Lab File: VX045713.D  
 Acq: 11 Apr 2025 03:36

Instrument : MSVOA\_X  
 ClientSampleId : VX0410MBL02

Tgt Ion:117 Resp: 114669

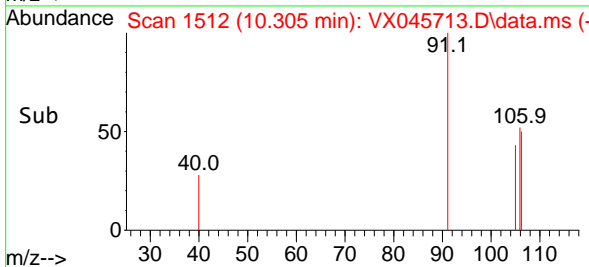
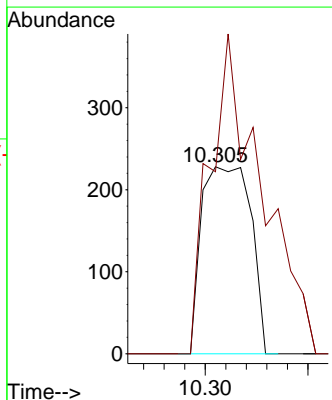
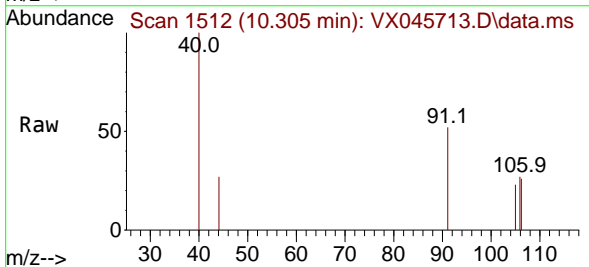
Ion	Ratio	Lower	Upper
117	100		
82	63.1	49.2	73.8
119	32.0	25.1	37.7

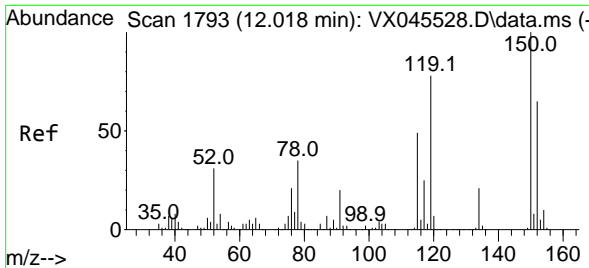


#68  
 m/p-Xylenes  
 Concen: 0.238 ug/l  
 RT: 10.305 min Scan# 1512  
 Delta R.T. 0.006 min  
 Lab File: VX045713.D  
 Acq: 11 Apr 2025 03:36

Tgt Ion:106 Resp: 380

Ion	Ratio	Lower	Upper
106	100		
91	179.5	172.6	258.8

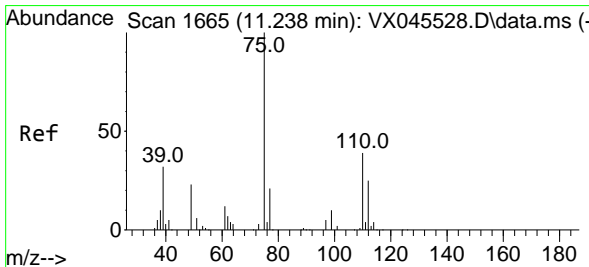
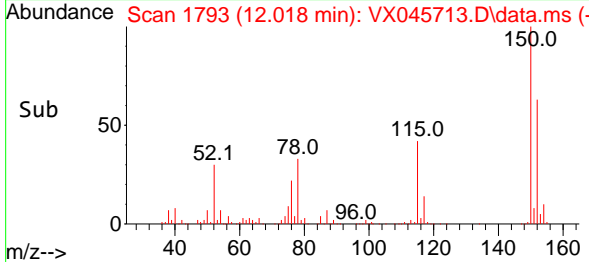
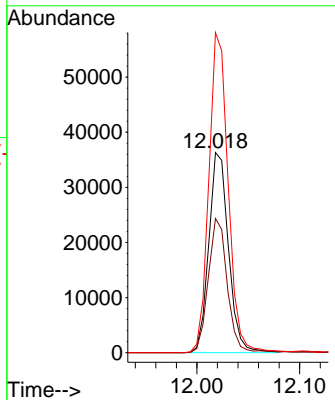
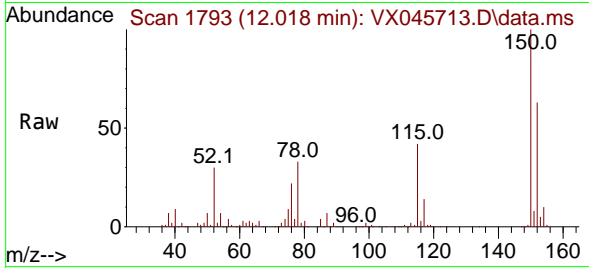




#72  
 1,4-Dichlorobenzene-d4  
 Concen: 50.000 ug/l  
 RT: 12.018 min Scan# 1  
 Delta R.T. -0.000 min  
 Lab File: VX045713.D  
 Acq: 11 Apr 2025 03:36

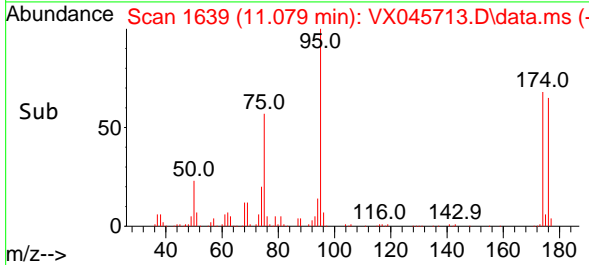
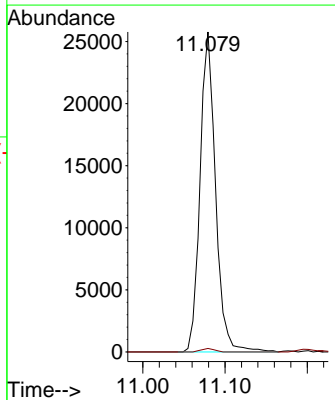
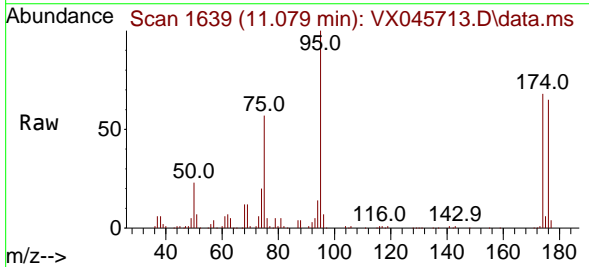
Instrument :  
 MSVOA\_X  
 ClientSampleId :  
 VX0410MBL02

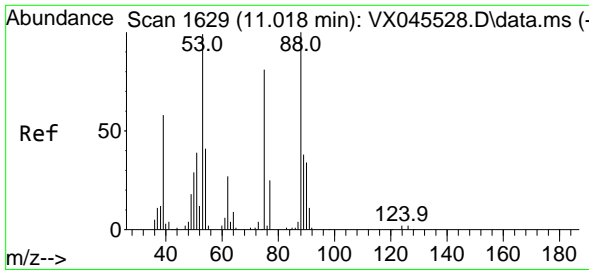
Tgt Ion	Resp	Lower	Upper
152	48374		
100	100		
115	65.3	46.9	140.7
150	156.6	0.0	349.4



#76  
 1,2,3-Trichloropropane  
 Concen: 28.583 ug/l  
 RT: 11.079 min Scan# 1639  
 Delta R.T. -0.159 min  
 Lab File: VX045713.D  
 Acq: 11 Apr 2025 03:36

Tgt Ion	Resp	Lower	Upper
75	33727		
100	100		
77	0.9	20.0	59.9#



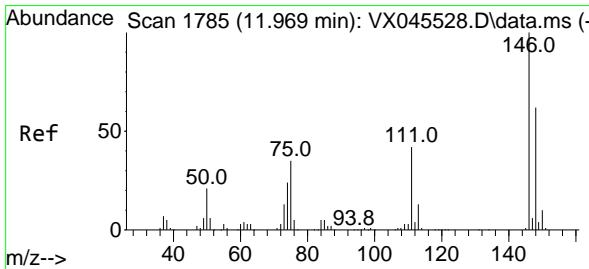
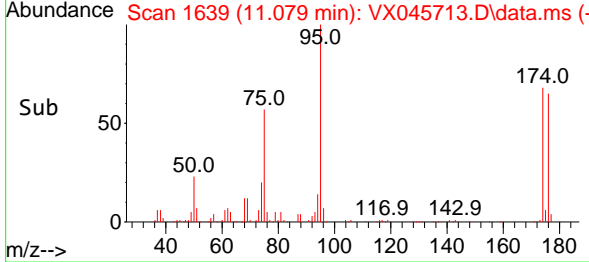
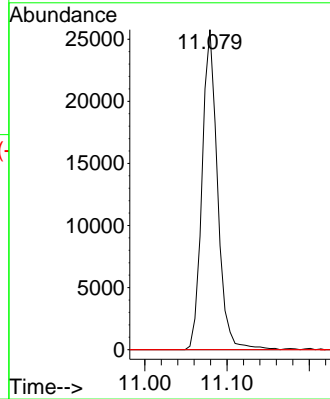
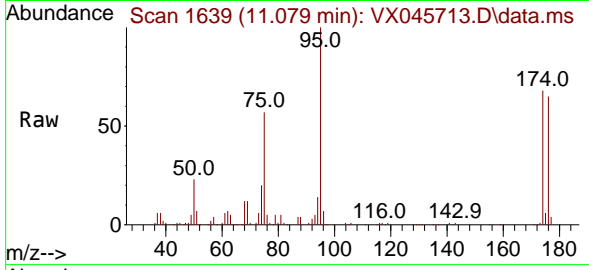


#81  
 trans-1,4-Dichloro-2-butene  
 Concen: 97.008 ug/l  
 RT: 11.079 min Scan# 1639  
 Delta R.T. 0.061 min  
 Lab File: VX045713.D  
 Acq: 11 Apr 2025 03:36

Instrument : MSVOA\_X  
 ClientSampleId : VX0410MBL02

Tgt Ion: 75 Resp: 33727

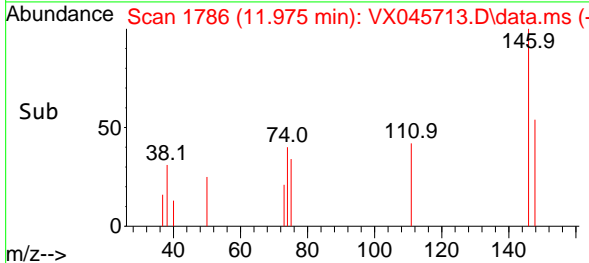
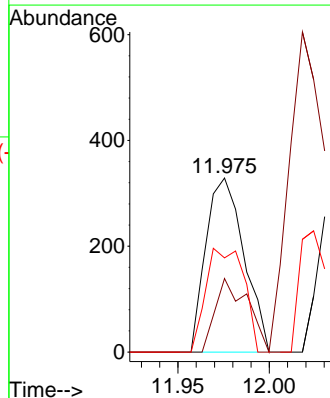
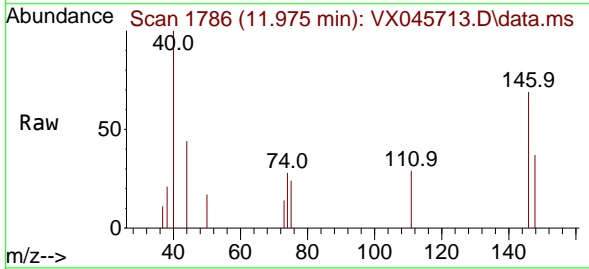
Ion	Ratio	Lower	Upper
75	100		
53	0.0	101.8	152.6#
89	0.0	37.2	55.8#

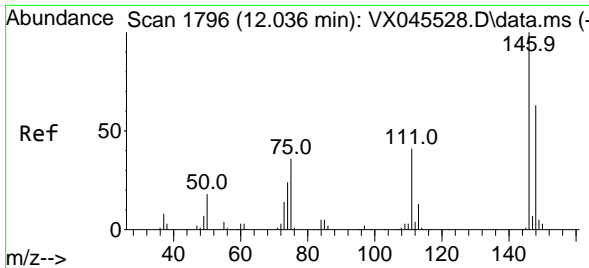


#87  
 1,3-Dichlorobenzene  
 Concen: 0.293 ug/l  
 RT: 11.975 min Scan# 1786  
 Delta R.T. 0.006 min  
 Lab File: VX045713.D  
 Acq: 11 Apr 2025 03:36

Tgt Ion: 146 Resp: 477

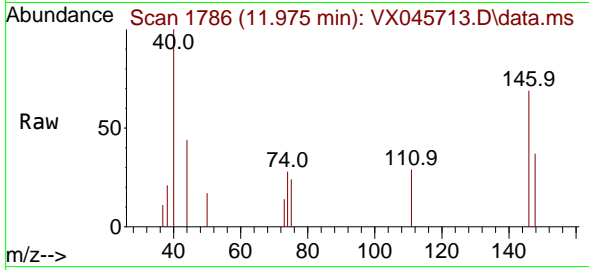
Ion	Ratio	Lower	Upper
146	100		
111	35.8	22.2	66.6
148	59.3	31.9	95.7



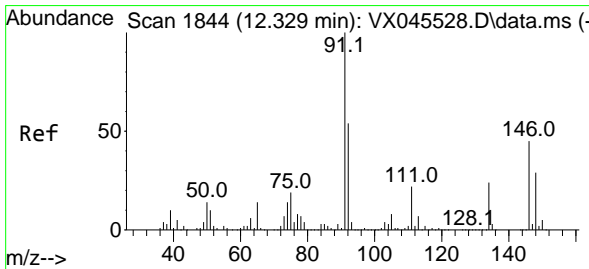
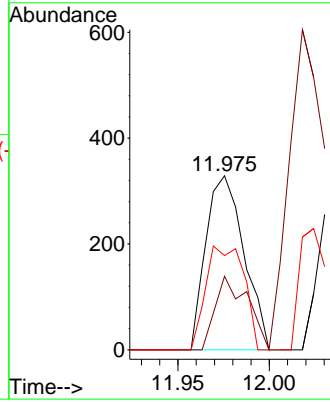
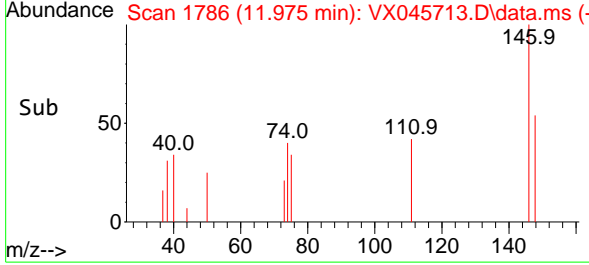


#88  
 1,4-Dichlorobenzene  
 Concen: 0.289 ug/l  
 RT: 11.975 min Scan# 11  
 Delta R.T. -0.061 min  
 Lab File: VX045713.D  
 Acq: 11 Apr 2025 03:36

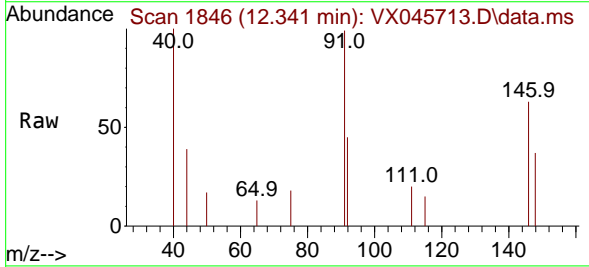
Instrument :  
 MSVOA\_X  
 ClientSampleId :  
 VX0410MBL02



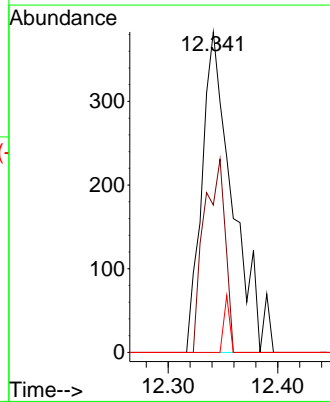
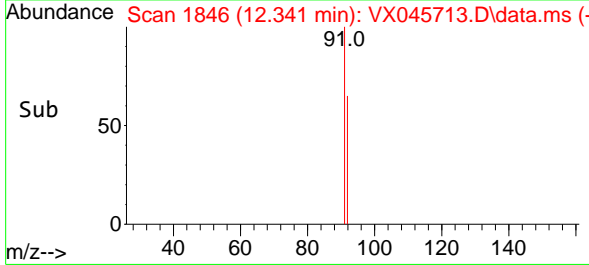
Tgt Ion:146 Resp: 477  
 Ion Ratio Lower Upper  
 146 100  
 111 35.8 20.9 62.8  
 148 59.3 31.5 94.5

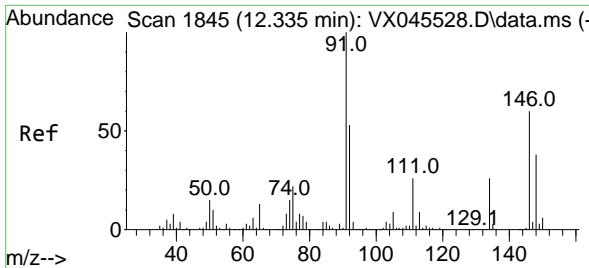


#89  
 n-Butylbenzene  
 Concen: 0.268 ug/l  
 RT: 12.341 min Scan# 1846  
 Delta R.T. 0.012 min  
 Lab File: VX045713.D  
 Acq: 11 Apr 2025 03:36



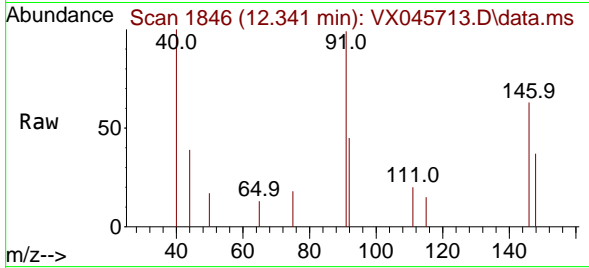
Tgt Ion: 91 Resp: 747  
 Ion Ratio Lower Upper  
 91 100  
 92 41.4 26.9 80.6  
 134 3.3 11.9 35.7#





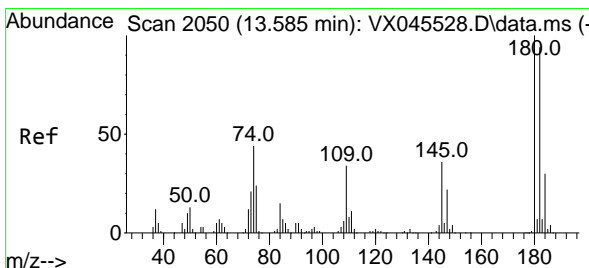
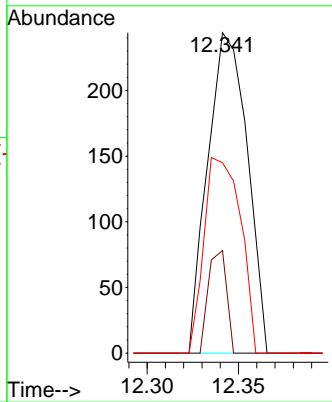
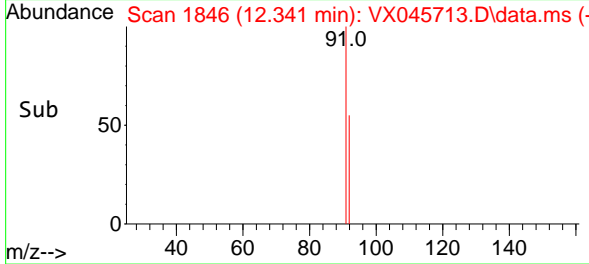
#91  
 1,2-Dichlorobenzene  
 Concen: 0.227 ug/l  
 RT: 12.341 min Scan# 1846  
 Delta R.T. 0.006 min  
 Lab File: VX045713.D  
 Acq: 11 Apr 2025 03:36

Instrument : MSVOA\_X  
 ClientSampleId : VX0410MBL02

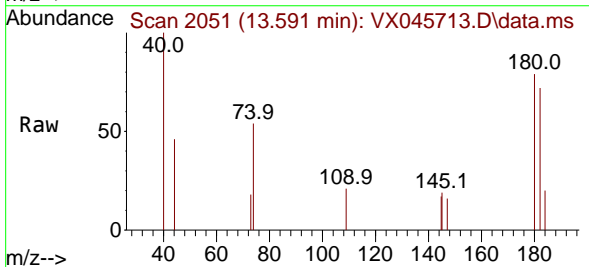


Tgt Ion:146 Resp: 368

Ion	Ratio	Lower	Upper
146	100		
111	14.9	22.9	68.8#
148	56.3	31.9	95.5

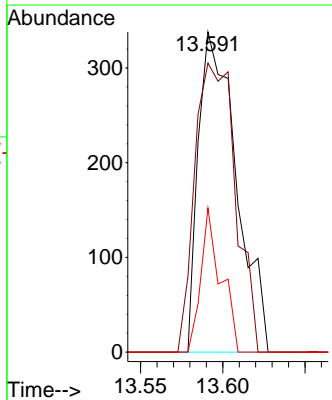
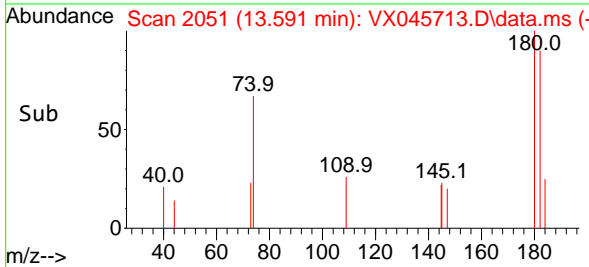


#93  
 1,2,4-Trichlorobenzene  
 Concen: 0.602 ug/l  
 RT: 13.591 min Scan# 2051  
 Delta R.T. 0.006 min  
 Lab File: VX045713.D  
 Acq: 11 Apr 2025 03:36

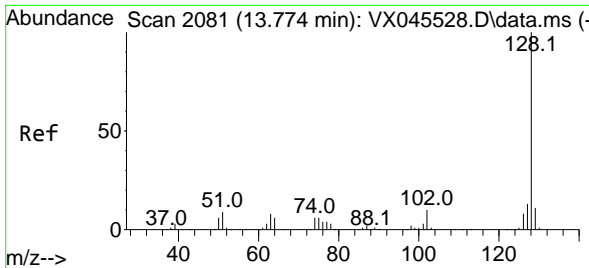


Tgt Ion:180 Resp: 543

Ion	Ratio	Lower	Upper
180	100		
182	96.7	47.9	143.6
145	23.8	17.9	53.8



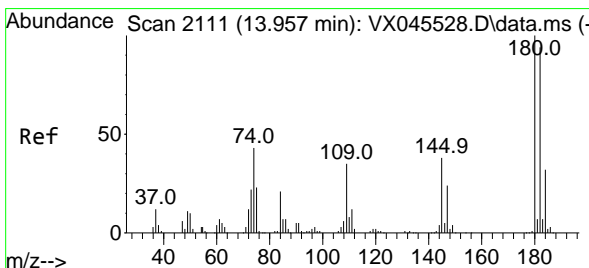
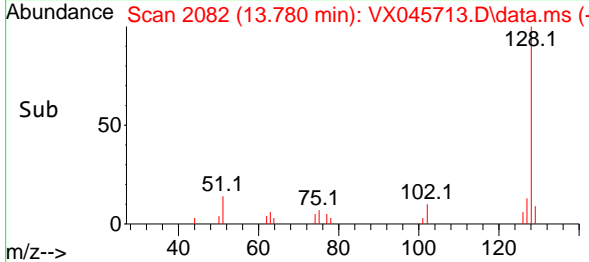
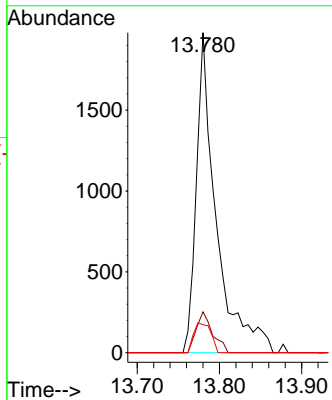
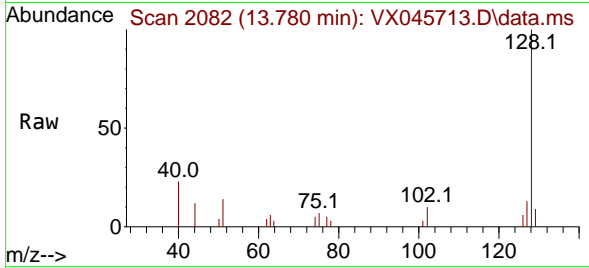




#95  
 Naphthalene  
 Concen: 0.989 ug/l  
 RT: 13.780 min Scan# 2082  
 Delta R.T. 0.006 min  
 Lab File: VX045713.D  
 Acq: 11 Apr 2025 03:36

Instrument : MSVOA\_X  
 ClientSampleId : VX0410MBL02

Tgt Ion	Resp	Lower	Upper
128	100		
127	10.5	10.3	15.5
129	8.0	8.6	12.8#



#96  
 1,2,3-Trichlorobenzene  
 Concen: 0.683 ug/l  
 RT: 13.969 min Scan# 2113  
 Delta R.T. 0.012 min  
 Lab File: VX045713.D  
 Acq: 11 Apr 2025 03:36

Tgt Ion	Resp	Lower	Upper
180	100		
182	90.2	47.3	141.8
145	34.3	18.2	54.6

