

Data Path : Z:\voasrv\HPCHEM1\MSVOA_X\Data\VX041125\
 Data File : VX045750.D
 Acq On : 11 Apr 2025 18:33
 Operator : JC/MD
 Sample : Q1790-06 20X
 Misc : 7.09g/10mL/100uL/5.00mL/MSVOA_X/MEOH
 ALS Vial : 22 Sample Multiplier: 1

Instrument :
 MSVOA_X
 ClientSampleId :
 S-870-G1-SO-22.0-22.5-041025

Quant Time: Apr 11 23:07:25 2025
 Quant Method : Z:\voasrv\HPCHEM1\MSVOA_X\Method\82X040225W.M
 Quant Title : SW846 8260
 QLast Update : Wed Apr 02 03:11:43 2025
 Response via : Initial Calibration

Compound	R.T.	QIon	Response	Conc	Units	Dev(Min)

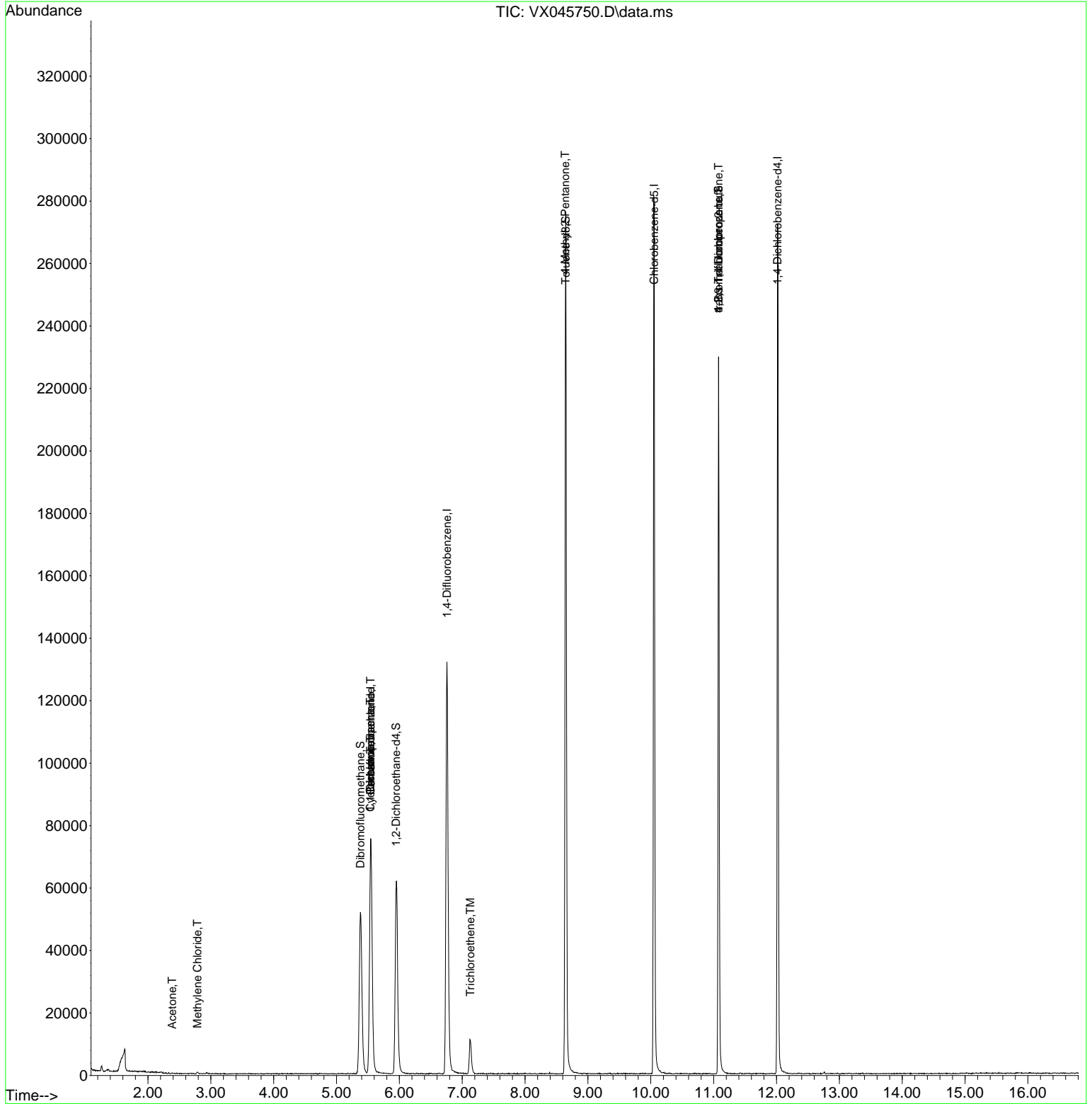
Internal Standards						
1) Pentafluorobenzene	5.544	168	62997	50.000	ug/l	0.00
34) 1,4-Difluorobenzene	6.757	114	125005	50.000	ug/l	0.00
63) Chlorobenzene-d5	10.055	117	117596	50.000	ug/l	0.00
72) 1,4-Dichlorobenzene-d4	12.018	152	50162	50.000	ug/l	0.00
System Monitoring Compounds						
33) 1,2-Dichloroethane-d4	5.946	65	63998	55.551	ug/l	0.00
Spiked Amount	50.000	Range	74 - 125	Recovery	=	111.100%
35) Dibromofluoromethane	5.379	113	45189	50.951	ug/l	0.00
Spiked Amount	50.000	Range	75 - 124	Recovery	=	101.900%
50) Toluene-d8	8.647	98	156941	50.697	ug/l	0.00
Spiked Amount	50.000	Range	86 - 113	Recovery	=	101.400%
62) 4-Bromofluorobenzene	11.079	95	58434	51.822	ug/l	0.00
Spiked Amount	50.000	Range	77 - 121	Recovery	=	103.640%
Target Compounds						
					Qvalue	
16) Acetone	2.386	43	246	0.520	ug/l #	47
20) Methylene Chloride	2.788	84	206	0.233	ug/l #	69
31) Cyclohexane	5.537	56	2004	1.418	ug/l #	55
36) 1,1-Dichloropropene	5.537	75	6443	5.380	ug/l #	50
38) Carbon Tetrachloride	5.544	117	7682	5.936	ug/l #	16
44) Trichloroethene	7.129	130	4447	5.116	ug/l	96
51) 4-Methyl-2-Pentanone	8.641	43	808	0.533	ug/l #	1
76) 1,2,3-Trichloropropane	11.079	75	34300	28.033	ug/l #	37
81) trans-1,4-Dichloro-2-b...	11.079	75	34300	95.140	ug/l #	1

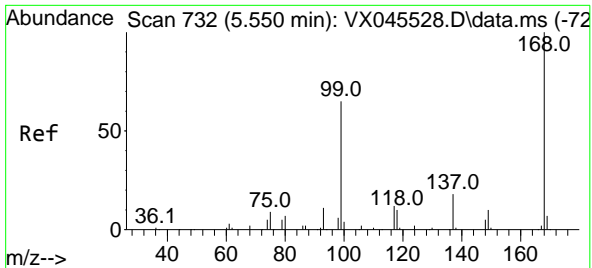
(#) = qualifier out of range (m) = manual integration (+) = signals summed

Data Path : Z:\voasrv\HPCHEM1\MSVOA_X\Data\VX041125\
 Data File : VX045750.D
 Acq On : 11 Apr 2025 18:33
 Operator : JC/MD
 Sample : Q1790-06 20X
 Misc : 7.09g/10mL/100uL/5.00mL/MSVOA_X/MEOH
 ALS Vial : 22 Sample Multiplier: 1

Instrument :
 MSVOA_X
ClientSampleId :
 S-870-G1-SO-22.0-22.5-041025

Quant Time: Apr 11 23:07:25 2025
 Quant Method : Z:\voasrv\HPCHEM1\MSVOA_X\Method\82X040225W.M
 Quant Title : SW846 8260
 QLast Update : Wed Apr 02 03:11:43 2025
 Response via : Initial Calibration

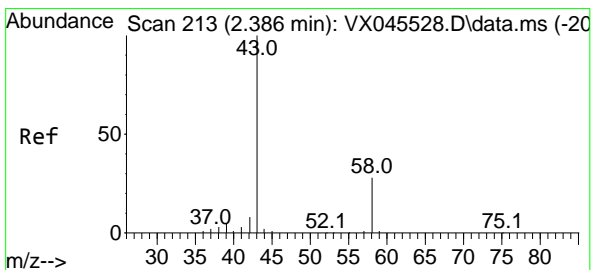
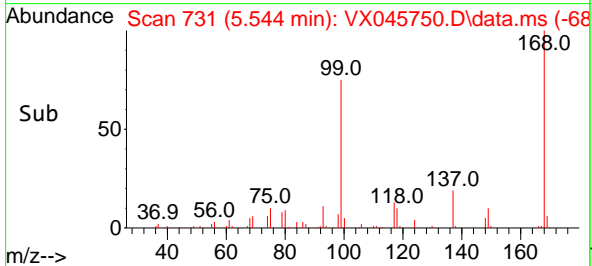
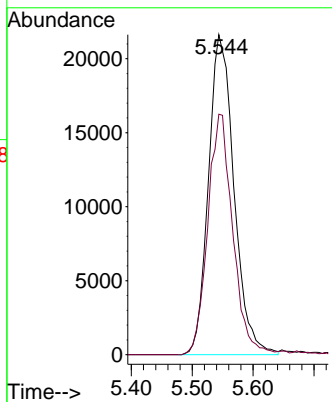
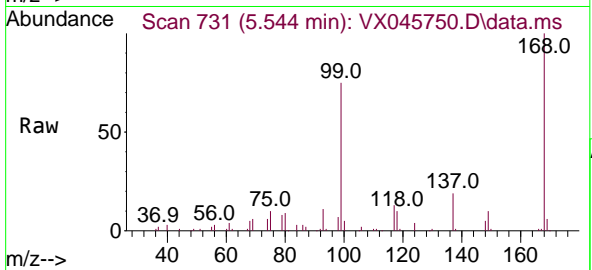




#1
 Pentafluorobenzene
 Concen: 50.000 ug/l
 RT: 5.544 min Scan# 71
 Delta R.T. -0.006 min
 Lab File: VX045750.D
 Acq: 11 Apr 2025 18:33

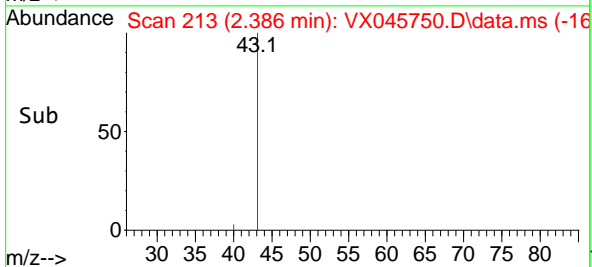
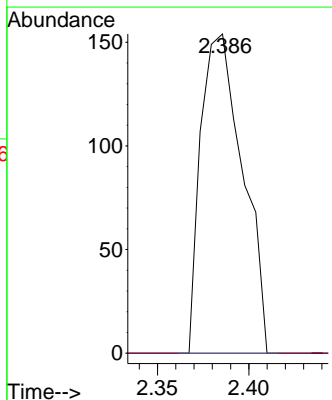
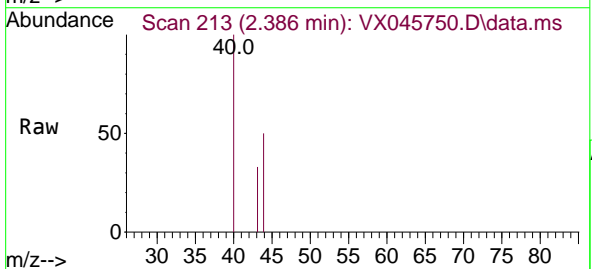
Instrument : MSVOA_X
 ClientSampleId : S-870-G1-SO-22.0-22.5-041025

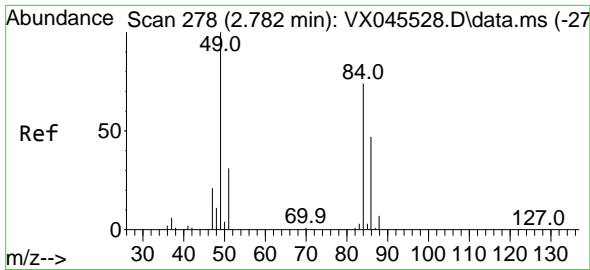
Tgt Ion:168 Resp: 62997
 Ion Ratio Lower Upper
 168 100
 99 75.2 52.3 78.5



#16
 Acetone
 Concen: 0.520 ug/l
 RT: 2.386 min Scan# 213
 Delta R.T. -0.000 min
 Lab File: VX045750.D
 Acq: 11 Apr 2025 18:33

Tgt Ion: 43 Resp: 246
 Ion Ratio Lower Upper
 43 100
 58 0.0 22.3 33.5#

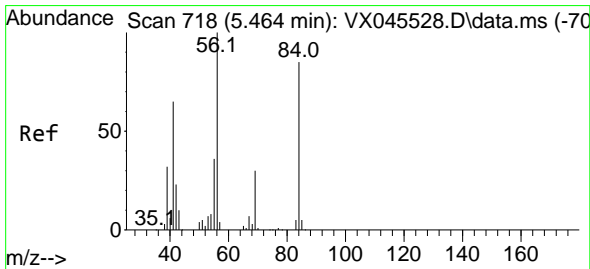
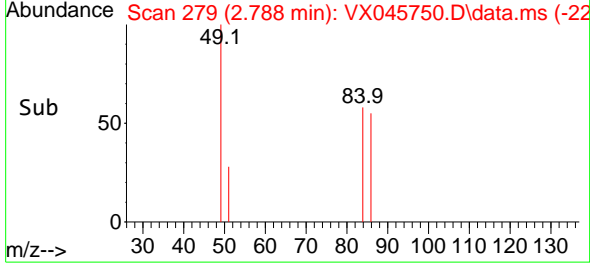
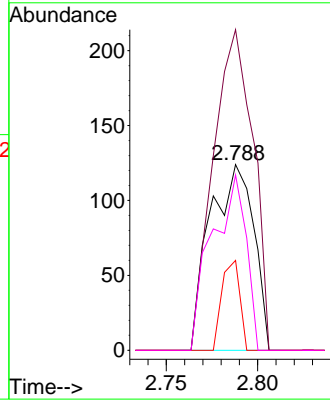
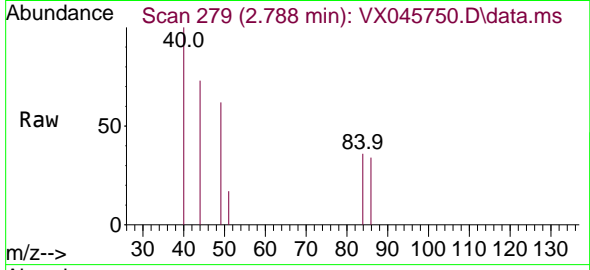




#20
 Methylene Chloride
 Concen: 0.233 ug/l
 RT: 2.788 min Scan# 21
 Delta R.T. 0.006 min
 Lab File: VX045750.D
 Acq: 11 Apr 2025 18:33

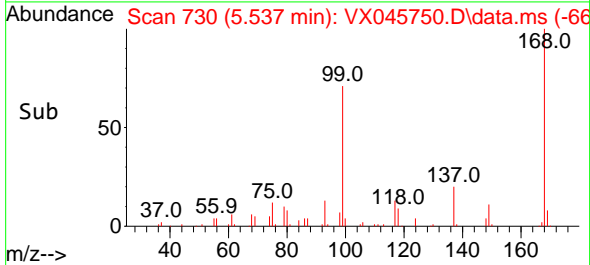
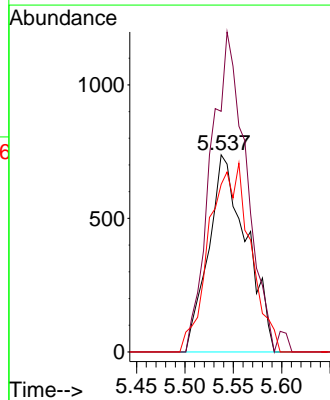
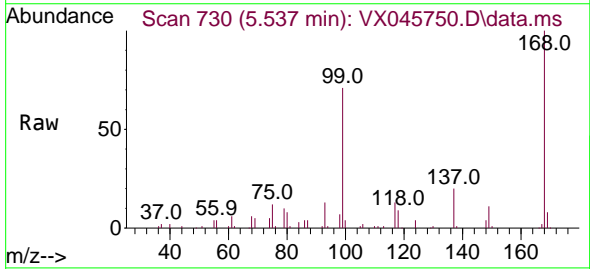
Instrument : MSVOA_X
 ClientSampleId : S-870-G1-SO-22.0-22.5-041025

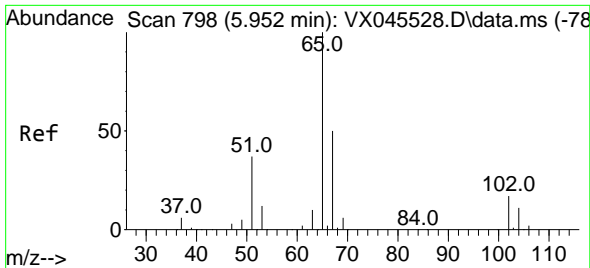
Tgt Ion	Resp	Lower	Upper
84	100		
49	172.6	107.5	161.3#
51	48.4	33.0	49.6
86	94.4	50.1	75.1#



#31
 Cyclohexane
 Concen: 1.418 ug/l
 RT: 5.537 min Scan# 730
 Delta R.T. 0.073 min
 Lab File: VX045750.D
 Acq: 11 Apr 2025 18:33

Tgt Ion	Resp	Lower	Upper
56	100		
69	122.1	23.6	35.4#
84	85.0	67.7	101.5

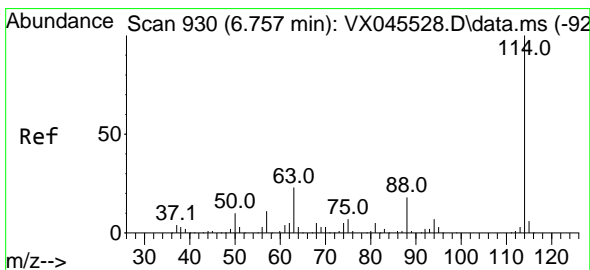
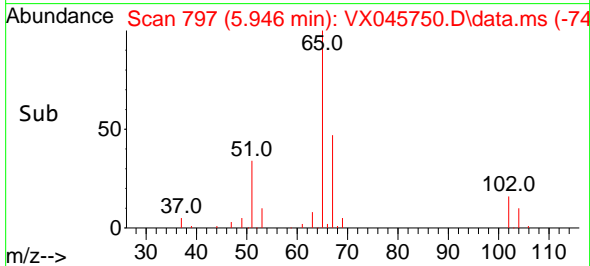
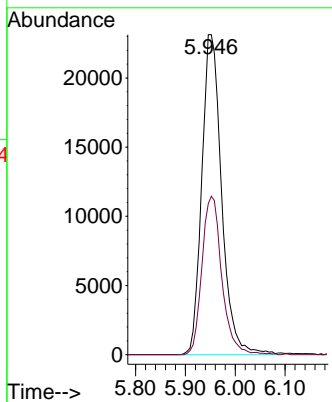
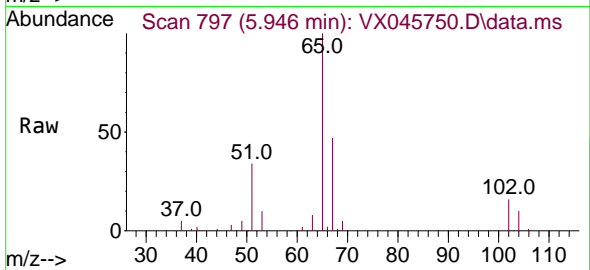




#33
 1,2-Dichloroethane-d4
 Concen: 55.551 ug/l
 RT: 5.946 min Scan# 798
 Delta R.T. -0.006 min
 Lab File: VX045750.D
 Acq: 11 Apr 2025 18:33

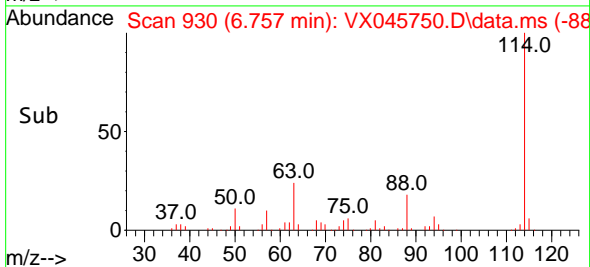
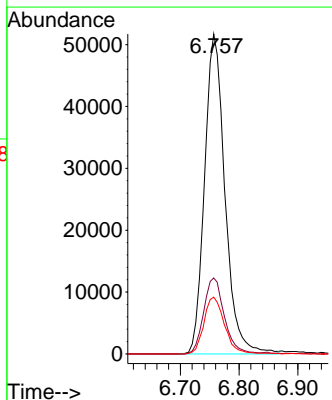
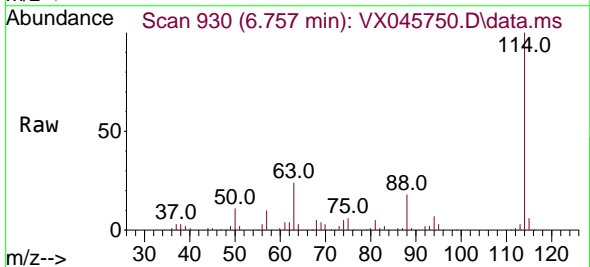
Instrument : MSVOA_X
 ClientSampleId : S-870-G1-SO-22.0-22.5-041025

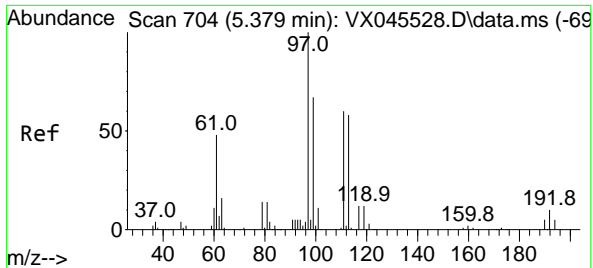
Tgt Ion: 65 Resp: 63998
 Ion Ratio Lower Upper
 65 100
 67 49.5 0.0 99.0



#34
 1,4-Difluorobenzene
 Concen: 50.000 ug/l
 RT: 6.757 min Scan# 930
 Delta R.T. -0.000 min
 Lab File: VX045750.D
 Acq: 11 Apr 2025 18:33

Tgt Ion: 114 Resp: 125005
 Ion Ratio Lower Upper
 114 100
 63 23.8 0.0 46.8
 88 17.8 0.0 35.4

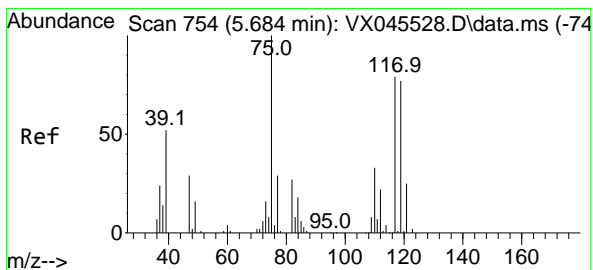
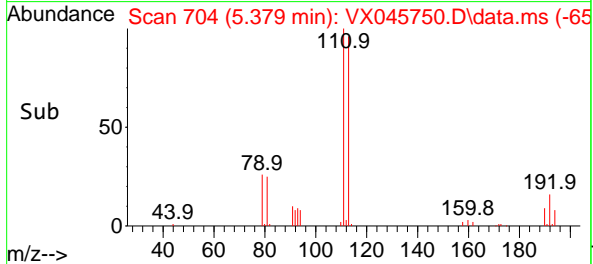
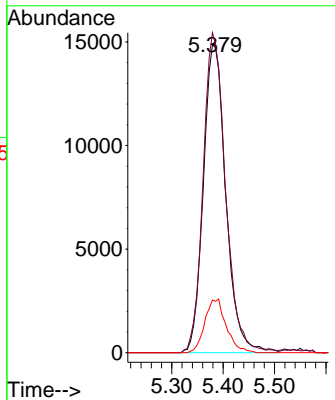
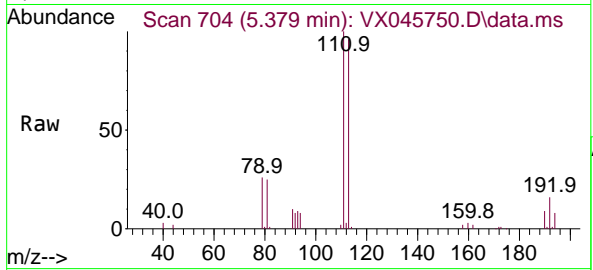




#35
 Dibromofluoromethane
 Concen: 50.951 ug/l
 RT: 5.379 min Scan# 704
 Delta R.T. -0.000 min
 Lab File: VX045750.D
 Acq: 11 Apr 2025 18:33

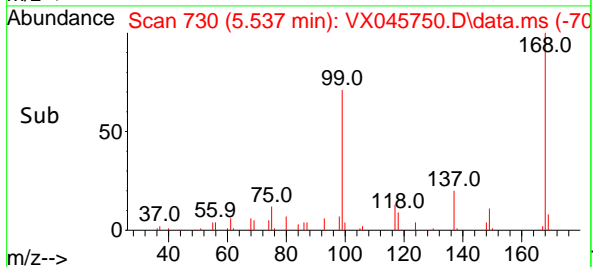
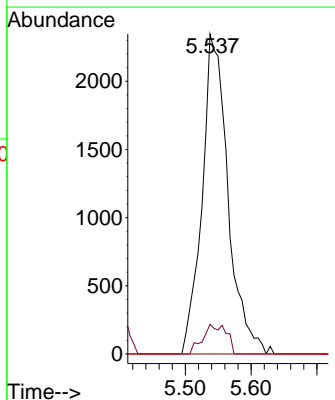
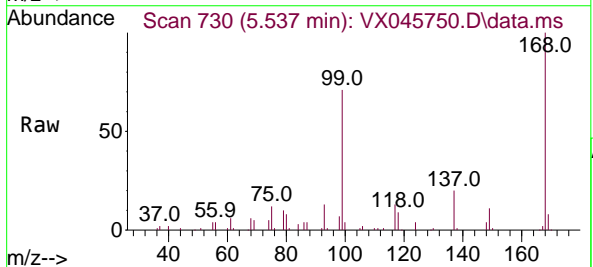
Instrument : MSVOA_X
 ClientSampleId : S-870-G1-SO-22.0-22.5-041025

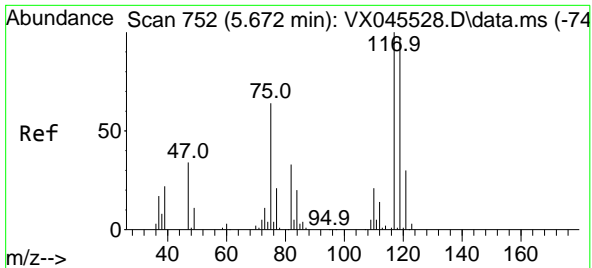
Tgt Ion	Resp	Lower	Upper
113	45189		
113	100		
111	103.6	81.8	122.6
192	16.5	13.8	20.6



#36
 1,1-Dichloropropene
 Concen: 5.380 ug/l
 RT: 5.537 min Scan# 730
 Delta R.T. -0.146 min
 Lab File: VX045750.D
 Acq: 11 Apr 2025 18:33

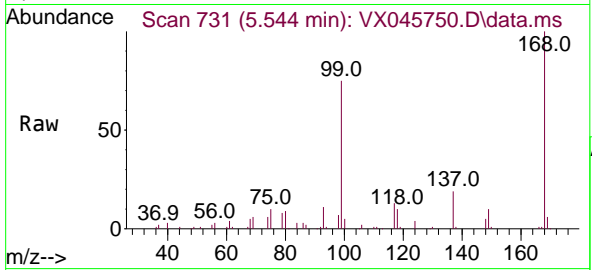
Tgt Ion	Resp	Lower	Upper
75	6443		
75	100		
110	8.4	16.9	50.6#
77	0.0	25.0	37.4#



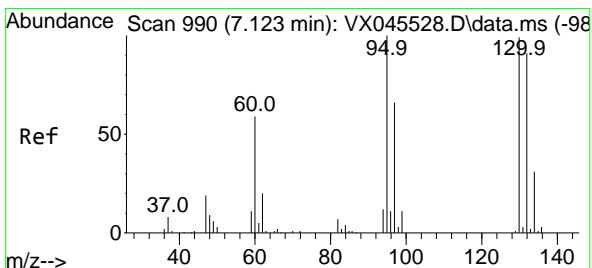
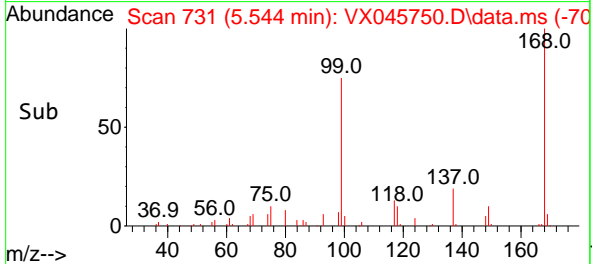
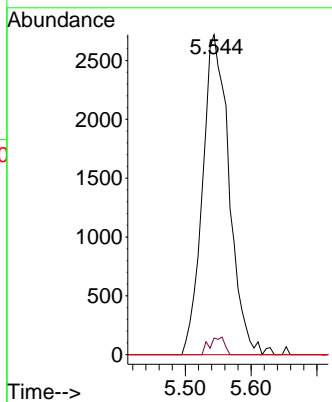


#38
 Carbon Tetrachloride
 Concen: 5.936 ug/l
 RT: 5.544 min Scan# 711
 Delta R.T. -0.128 min
 Lab File: VX045750.D
 Acq: 11 Apr 2025 18:33

Instrument : MSVOA_X
 ClientSampleId : S-870-G1-SO-22.0-22.5-041025

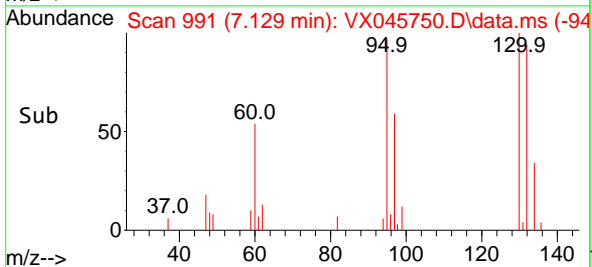
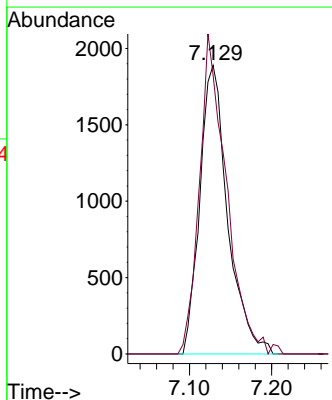
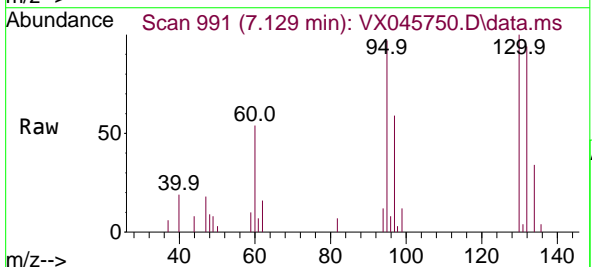


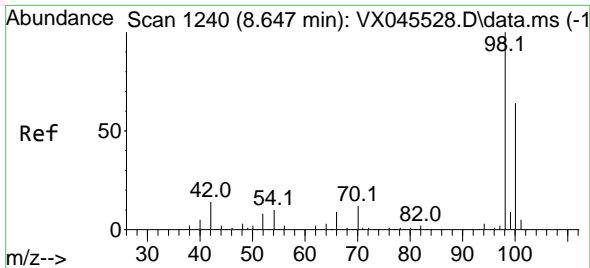
Tgt Ion:117 Resp: 7682
 Ion Ratio Lower Upper
 117 100
 119 5.2 76.9 115.3#
 121 0.0 24.2 36.2#



#44
 Trichloroethene
 Concen: 5.116 ug/l
 RT: 7.129 min Scan# 991
 Delta R.T. 0.006 min
 Lab File: VX045750.D
 Acq: 11 Apr 2025 18:33

Tgt Ion:130 Resp: 4447
 Ion Ratio Lower Upper
 130 100
 95 96.7 0.0 202.0

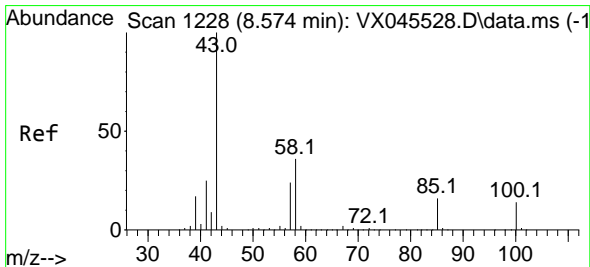
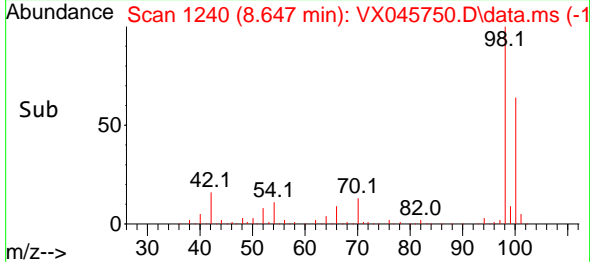
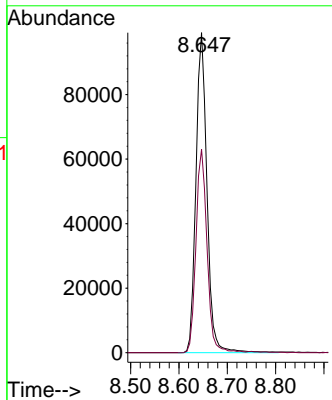
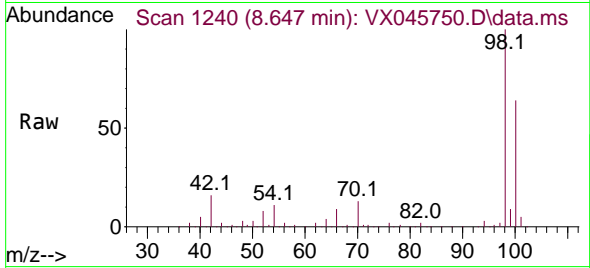




#50
 Toluene-d8
 Concen: 50.697 ug/l
 RT: 8.647 min Scan# 11
 Delta R.T. -0.000 min
 Lab File: VX045750.D
 Acq: 11 Apr 2025 18:33

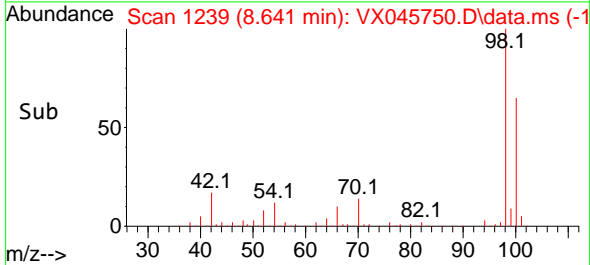
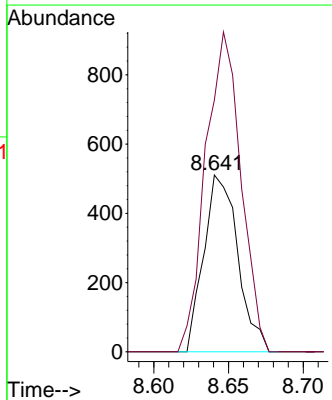
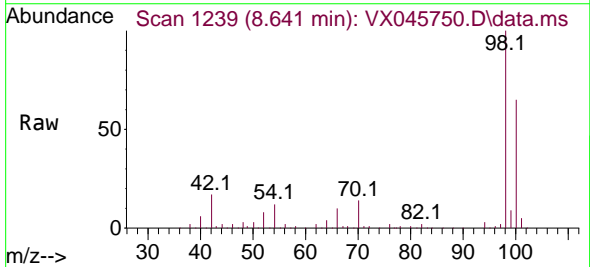
Instrument : MSVOA_X
 ClientSampleId : S-870-G1-SO-22.0-22.5-041025

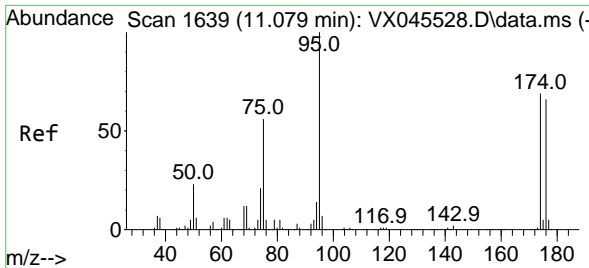
Tgt Ion: 98 Resp: 156941
 Ion Ratio Lower Upper
 98 100
 100 63.8 52.2 78.4



#51
 4-Methyl-2-Pentanone
 Concen: 0.533 ug/l
 RT: 8.641 min Scan# 1239
 Delta R.T. 0.067 min
 Lab File: VX045750.D
 Acq: 11 Apr 2025 18:33

Tgt Ion: 43 Resp: 808
 Ion Ratio Lower Upper
 43 100
 58 187.7 28.5 42.7#

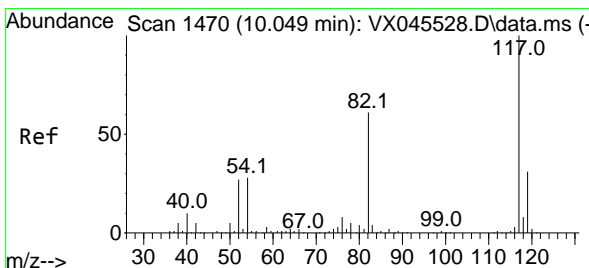
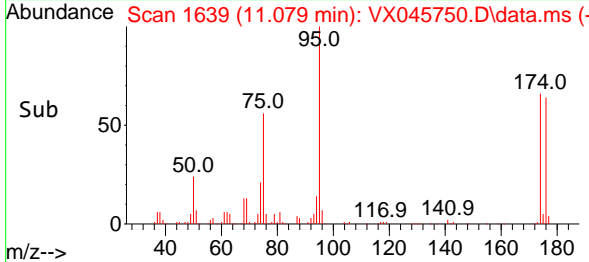
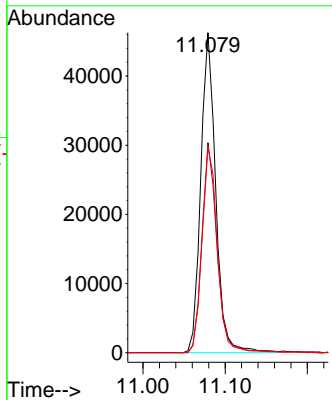
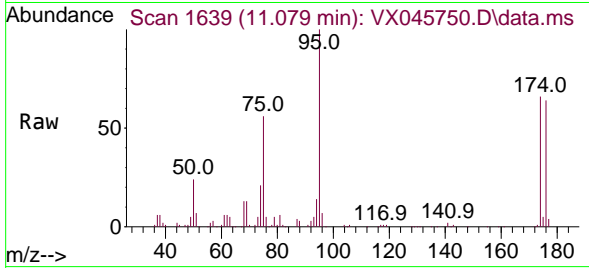




#62
 4-Bromofluorobenzene
 Concen: 51.822 ug/l
 RT: 11.079 min Scan# 1639
 Delta R.T. -0.000 min
 Lab File: VX045750.D
 Acq: 11 Apr 2025 18:33

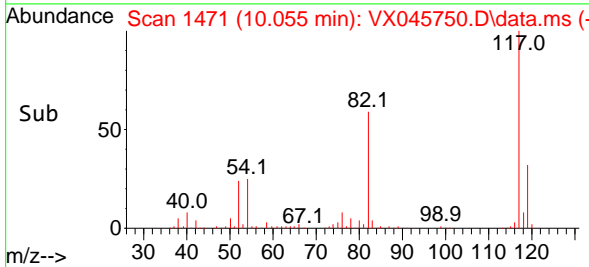
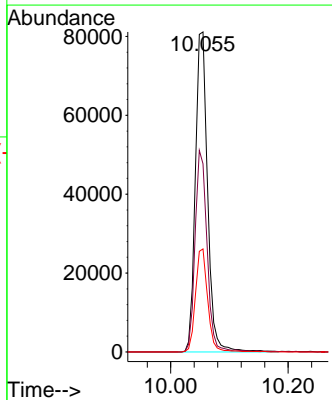
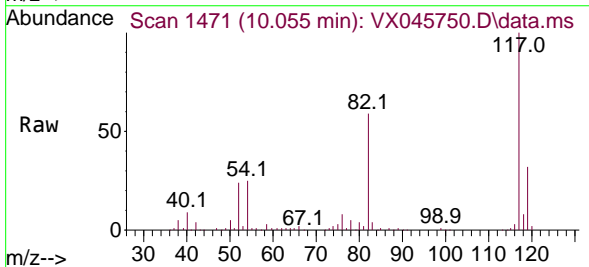
Instrument : MSVOA_X
 ClientSampleId : S-870-G1-SO-22.0-22.5-041025

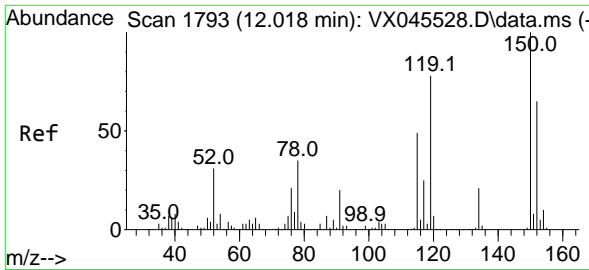
Tgt Ion	Resp	Lower	Upper
95	58434	100	
174	66.4	0.0	135.8
176	65.9	0.0	131.4



#63
 Chlorobenzene-d5
 Concen: 50.000 ug/l
 RT: 10.055 min Scan# 1471
 Delta R.T. 0.006 min
 Lab File: VX045750.D
 Acq: 11 Apr 2025 18:33

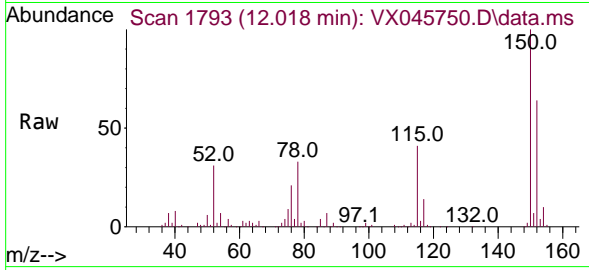
Tgt Ion	Resp	Lower	Upper
117	117596	100	
82	58.8	49.2	73.8
119	32.2	25.1	37.7



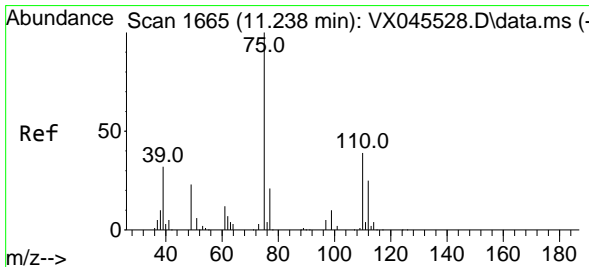
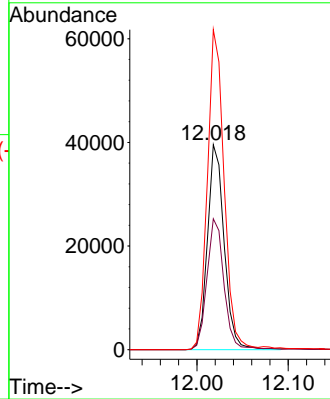
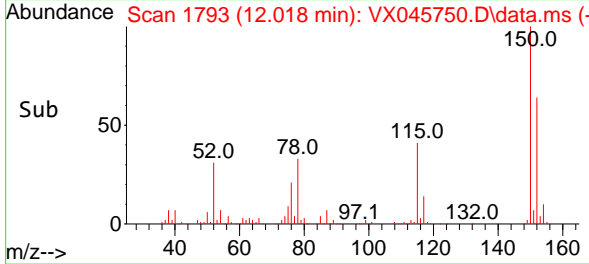


#72
 1,4-Dichlorobenzene-d4
 Concen: 50.000 ug/l
 RT: 12.018 min Scan# 11
 Delta R.T. -0.000 min
 Lab File: VX045750.D
 Acq: 11 Apr 2025 18:33

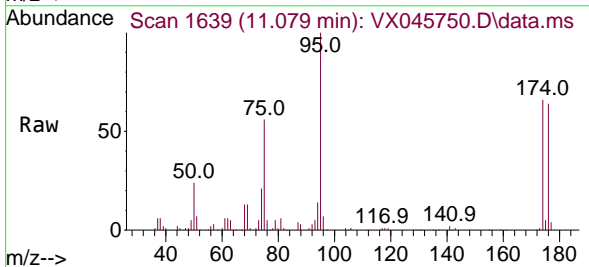
Instrument : MSVOA_X
 ClientSampleId : S-870-G1-SO-22.0-22.5-041025



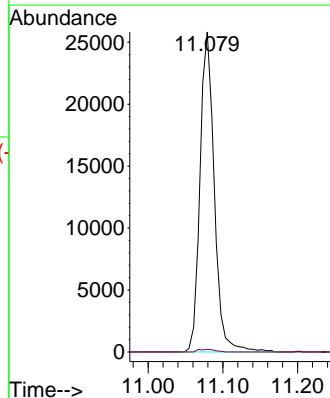
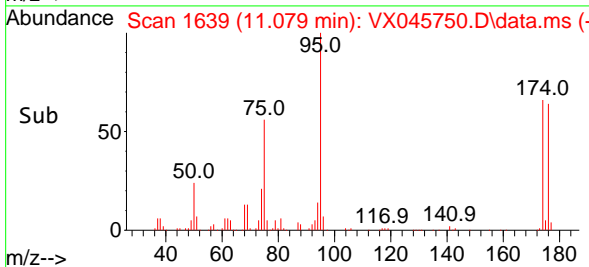
Tgt Ion:152 Resp: 50162
 Ion Ratio Lower Upper
 152 100
 115 65.2 46.9 140.7
 150 158.0 0.0 349.4

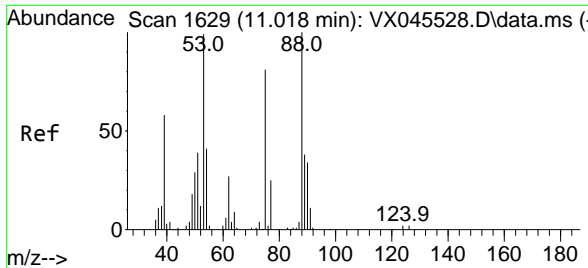


#76
 1,2,3-Trichloropropane
 Concen: 28.033 ug/l
 RT: 11.079 min Scan# 1639
 Delta R.T. -0.159 min
 Lab File: VX045750.D
 Acq: 11 Apr 2025 18:33



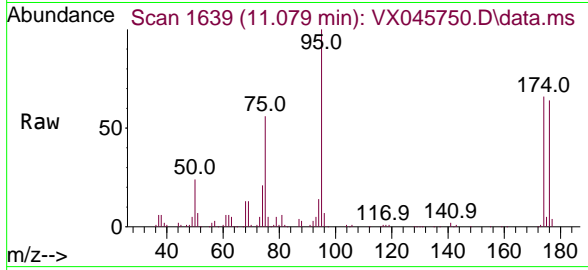
Tgt Ion: 75 Resp: 34300
 Ion Ratio Lower Upper
 75 100
 77 1.0 20.0 59.9#





#81
 trans-1,4-Dichloro-2-butene
 Concen: 95.140 ug/l
 RT: 11.079 min Scan# 10
 Delta R.T. 0.061 min
 Lab File: VX045750.D
 Acq: 11 Apr 2025 18:33

Instrument : MSVOA_X
 ClientSampleId : S-870-G1-SO-22.0-22.5-041025



Tgt Ion: 75 Resp: 34300

Ion	Ratio	Lower	Upper
75	100		
53	0.0	101.8	152.6#
89	0.0	37.2	55.8#

