

Data Path : Z:\voasrv\HPCHEM1\MSVOA\_X\Data\VX041125\  
 Data File : VX045747.D  
 Acq On : 11 Apr 2025 17:23  
 Operator : JC/MD  
 Sample : Q1773-01  
 Misc : 5.0mL/MSVOA\_X/WATER  
 ALS Vial : 19 Sample Multiplier: 1

Instrument :  
 MSVOA\_X  
 ClientSampleId :  
 BP-TB-20250407

Integration Parameters: RTEINT.P

Integrator: RTE  
 Smoothing : ON Filtering: 5  
 Sampling : 1 Min Area: 3 % of largest Peak  
 Start Thrs: 0.2 Max Peaks: 100  
 Stop Thrs : 0 Peak Location: TOP

If leading or trailing edge < 100 prefer < Baseline drop else tangent >  
 Peak separation: 5

Method : Z:\voasrv\HPCHEM1\MSVOA\_X\Method\82X040225W.M  
 Title : SW846 8260

Signal : TIC: VX045747.D\data.ms

peak #	R.T. min	first scan	max scan	last scan	PK TY	peak height	corr. area	corr. % max.	% of total
1	1.642	69	91	98	rBV4	7524	36758	8.25%	1.531%
2	5.379	694	704	721	rBV	52549	156857	35.22%	6.532%
3	5.544	721	731	749	rVB	76894	216201	48.55%	9.004%
4	5.952	788	798	814	rBV	60958	168411	37.82%	7.014%
5	6.757	921	930	944	rBV	132017	324160	72.79%	13.500%
6	8.647	1233	1240	1256	rBV	276050	445331	100.00%	18.546%
7	10.049	1465	1470	1485	rBV	284835	407158	91.43%	16.957%
8	11.079	1634	1639	1652	rBV	235277	299637	67.28%	12.479%
9	12.018	1788	1793	1808	rBV	277585	346670	77.85%	14.437%

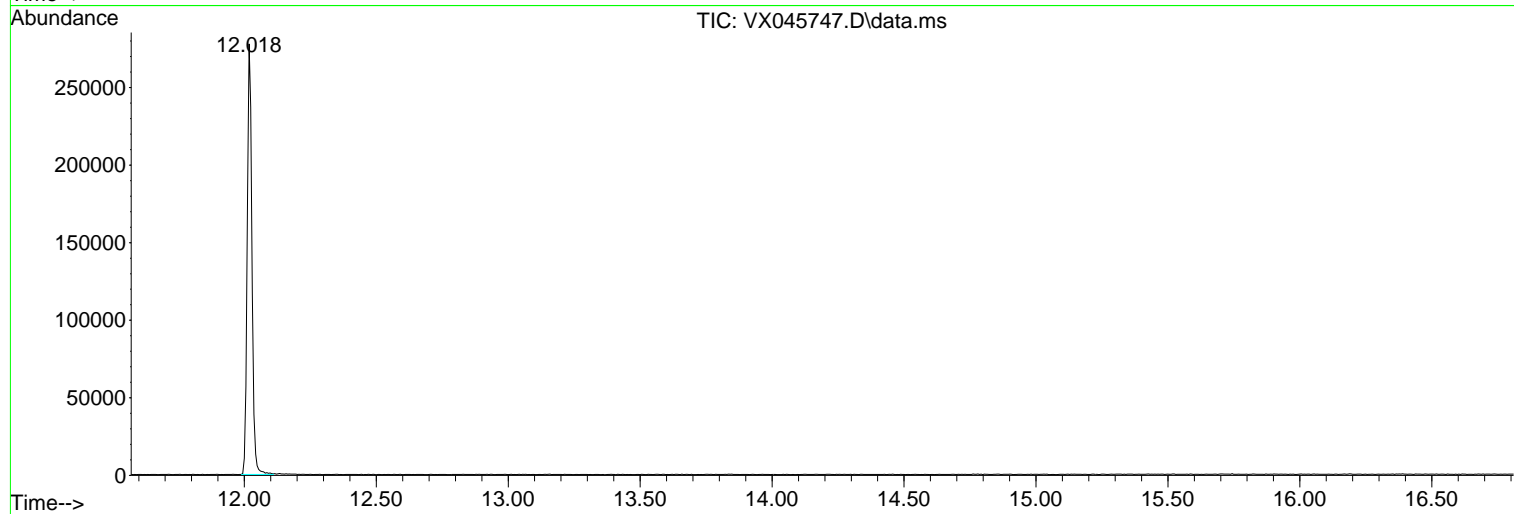
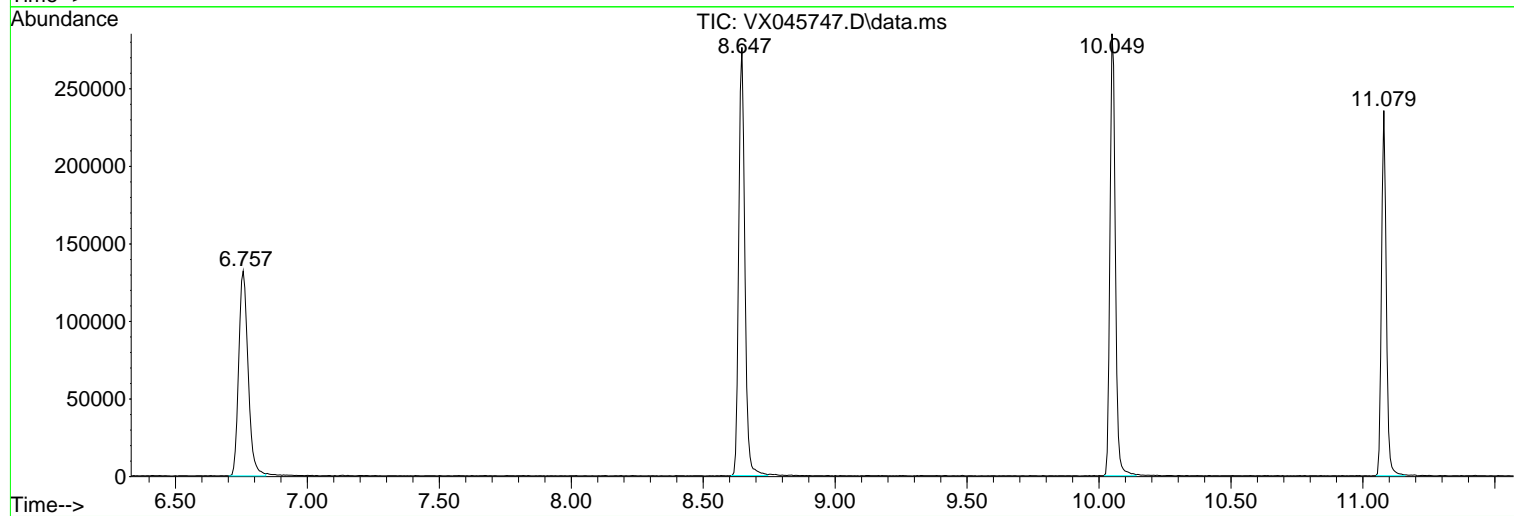
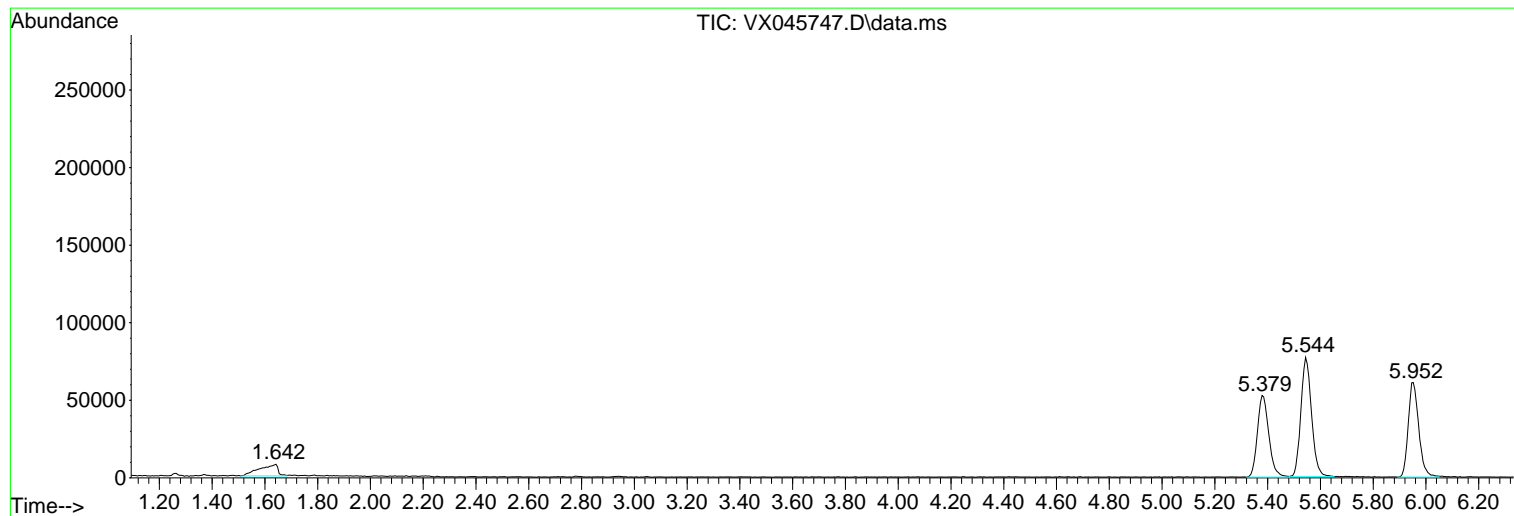
Sum of corrected areas: 2401183

Data Path : Z:\voasrv\HPCHEM1\MSVOA\_X\Data\VX041125\  
Data File : VX045747.D  
Acq On : 11 Apr 2025 17:23  
Operator : JC/MD  
Sample : Q1773-01  
Misc : 5.0mL/MSVOA\_X/WATER  
ALS Vial : 19 Sample Multiplier: 1

Instrument :  
MSVOA\_X  
ClientSampleId :  
BP-TB-20250407

Quant Method : Z:\voasrv\HPCHEM1\MSVOA\_X\Method\82X040225W.M  
Quant Title : SW846 8260

TIC Library : C:\Database\NIST20.L  
TIC Integration Parameters: LSCINT.P



Library Search Compound Report

Data Path : Z:\voasrv\HPCHEM1\MSVOA\_X\Data\VX041125\  
Data File : VX045747.D  
Acq On : 11 Apr 2025 17:23  
Operator : JC/MD  
Sample : Q1773-01  
Misc : 5.0mL/MSVOA\_X/WATER  
ALS Vial : 19 Sample Multiplier: 1

Instrument :  
MSVOA\_X  
ClientSampleId :  
BP-TB-20250407

Quant Method : Z:\voasrv\HPCHEM1\MSVOA\_X\Method\82X040225W.M  
Quant Title : SW846 8260

TIC Library : C:\Database\NIST20.L  
TIC Integration Parameters: LSCINT.P

No Library Search Compounds Detected

\*\*\*\*\*

Data Path : Z:\voasrv\HPCHEM1\MSVOA\_X\Data\VX041125\  
Data File : VX045747.D  
Acq On : 11 Apr 2025 17:23  
Operator : JC/MD  
Sample : Q1773-01  
Misc : 5.0mL/MSVOA\_X/WATER  
ALS Vial : 19 Sample Multiplier: 1

Instrument :  
MSVOA\_X  
ClientSampleId :  
BP-TB-20250407

Quant Method : Z:\voasrv\HPCHEM1\MSVOA\_X\Method\82X040225W.M  
Quant Title : SW846 8260

TIC Library : C:\Database\NIST20.L  
TIC Integration Parameters: LSCINT.P

TIC Top Hit name	RT	EstConc	Units	Response	--Internal Standard--			
					#	RT	Resp	Conc

---