

Data Path : Z:\VOASRV\HPCHEM1\MSVOA\_X\DATA\VX041219\  
 Data File : VX008919.D  
 Acq On : 13 Apr 2019 04:45  
 Operator : JC/SP  
 Sample : K2364-02  
 Misc : 5.0mL/MSVOA\_X/WATER  
 ALS Vial : 49 Sample Multiplier: 1

Instrument :  
 MSVOA\_X  
 ClientSampleId :  
 OR-COMP-2

Integration Parameters: RTEINT.P  
 Integrator: RTE  
 Smoothing : ON Filtering: 5  
 Sampling : 1 Min Area: 3 % of largest Peak  
 Start Thrs: 0.2 Max Peaks: 100  
 Stop Thrs : 0 Peak Location: TOP

If leading or trailing edge < 100 prefer < Baseline drop else tangent >  
 Peak separation: 5

Method : Z:\VOASRV\HPCHEM1\MSVOA\_X\METHOD\82X040319W.M  
 Title : SW846 8260

Signal : TIC

peak #	R.T. min	first scan	max scan	last scan	PK TY	peak height	corr. area	corr. % max.	% of total
1	1.477	50	53	83	rBV	21245040	34936866	45.75%	18.278%
2	2.172	151	167	171	rBV	6433814	18313799	23.98%	9.581%
3	2.446	206	212	229	rVB	796103	1368025	1.79%	0.716%
4	2.623	232	241	259	rBV	1727430	3138871	4.11%	1.642%
5	6.860	926	936	945	rBV	308763	765201	1.00%	0.400%
6	6.994	945	958	984	rVB	12881244	32120444	42.06%	16.805%
7	7.311	998	1010	1018	rBV	9378468	19781609	25.91%	10.349%
8	8.713	1233	1240	1247	rBV	685233	1065834	1.40%	0.558%
9	10.110	1461	1469	1481	rBV	631367	906826	1.19%	0.474%
10	10.384	1505	1514	1523	rBV	45567307	76359418	100.00%	39.950%
11	11.207	1642	1649	1656	rVB	909170	1194285	1.56%	0.625%
12	12.268	1817	1823	1832	rBV	945579	1187555	1.56%	0.621%

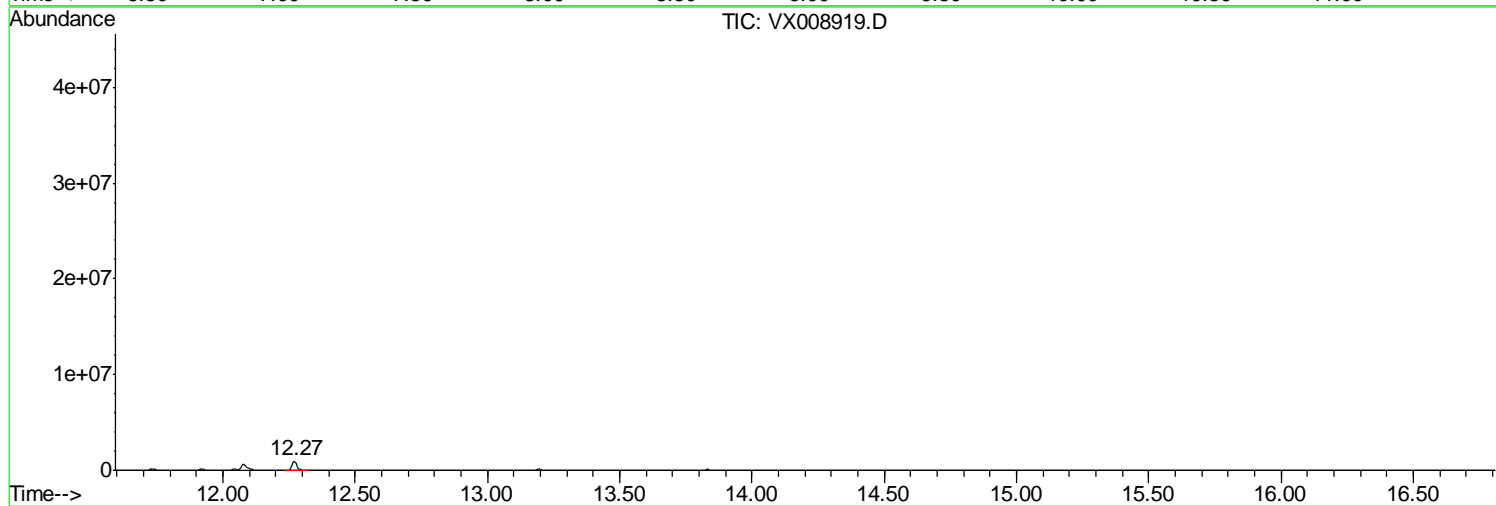
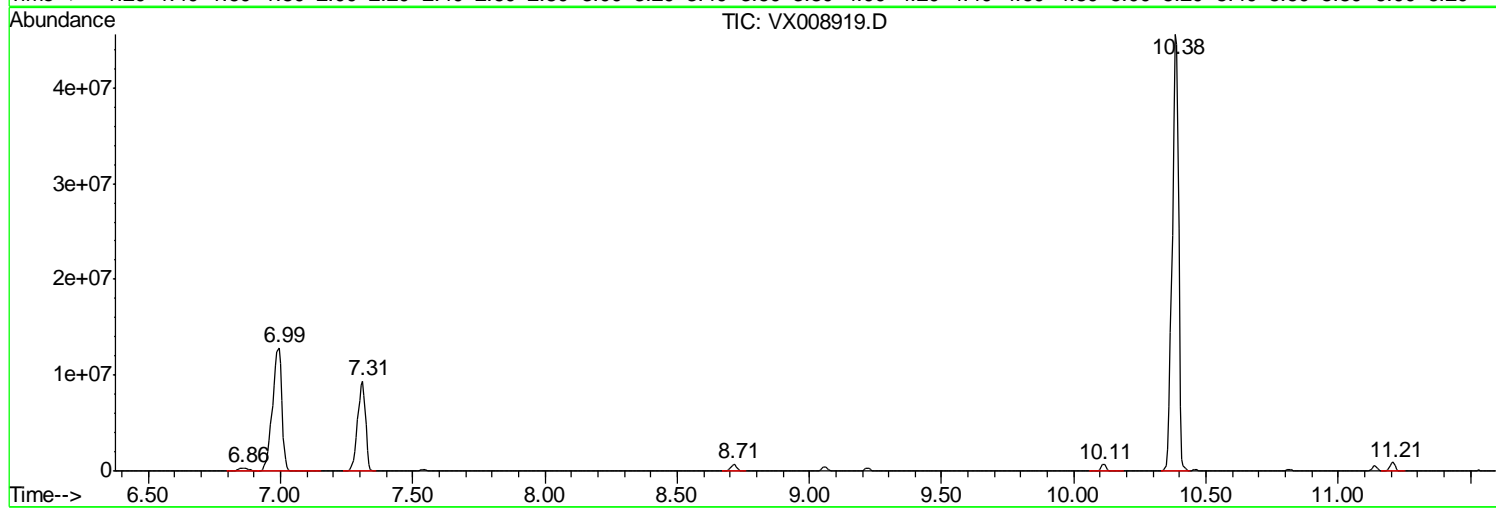
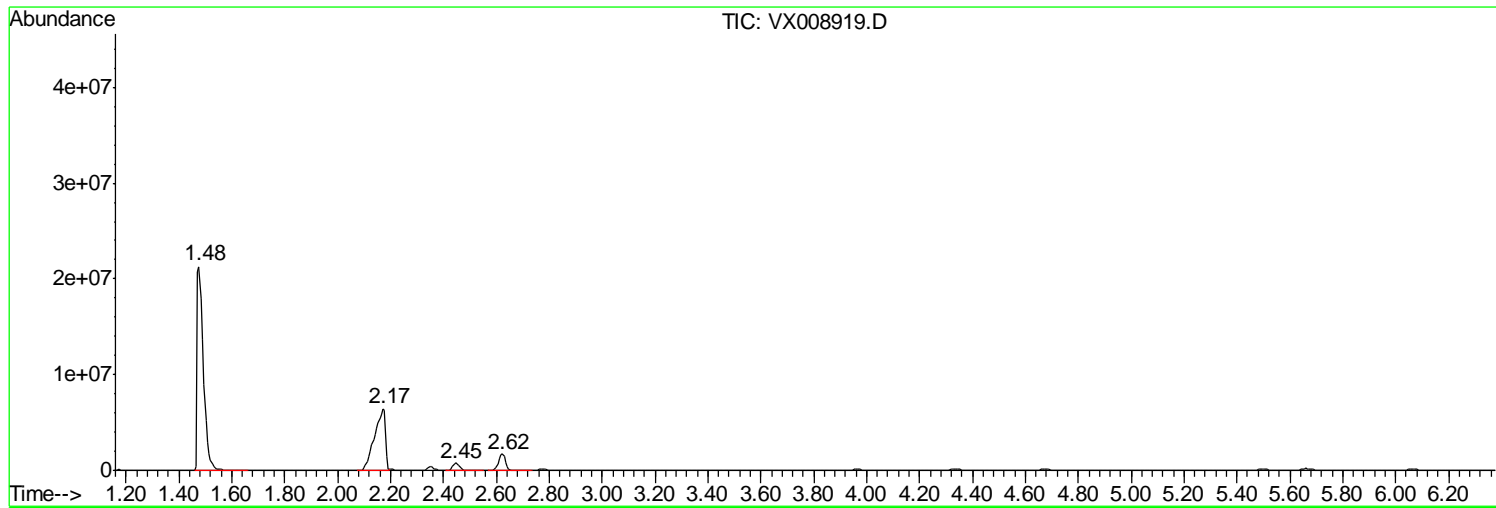
Sum of corrected areas: 191138733

Data Path : Z:\VOASRV\HPCHEM1\MSVOA\_X\DATA\VX041219\  
Data File : VX008919.D  
Acq On : 13 Apr 2019 04:45  
Operator : JC/SP  
Sample : K2364-02  
Misc : 5.0mL/MSVOA\_X/WATER  
ALS Vial : 49 Sample Multiplier: 1

Instrument :  
MSVOA\_X  
ClientSampleId :  
OR-COMP-2

Quant Method : Z:\VOASRV\HPCHEM1\MSVOA\_X\METHOD\82X040319W.M  
Quant Title : SW846 8260

TIC Library : C:\DATABASE\NIST11.L  
TIC Integration Parameters: LSCINT.P



Data Path : Z:\VOASRV\HPCHEM1\MSVOA\_X\DATA\VX041219\  
 Data File : VX008919.D  
 Acq On : 13 Apr 2019 04:45  
 Operator : JC/SP  
 Sample : K2364-02  
 Misc : 5.0mL/MSVOA\_X/WATER  
 ALS Vial : 49 Sample Multiplier: 1

Instrument :  
 MSVOA\_X  
 ClientSampled :  
 OR-COMP-2

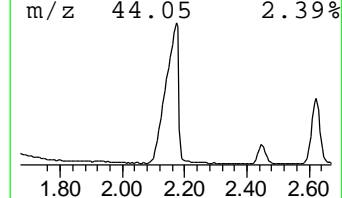
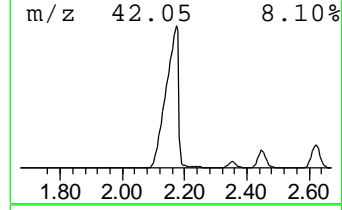
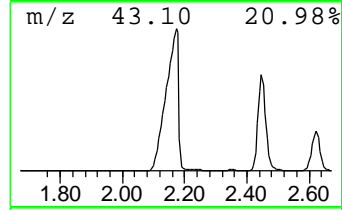
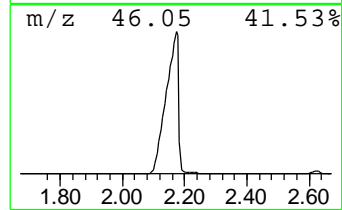
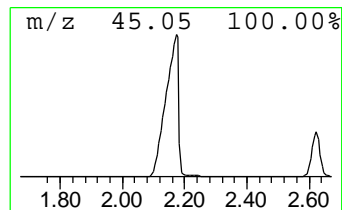
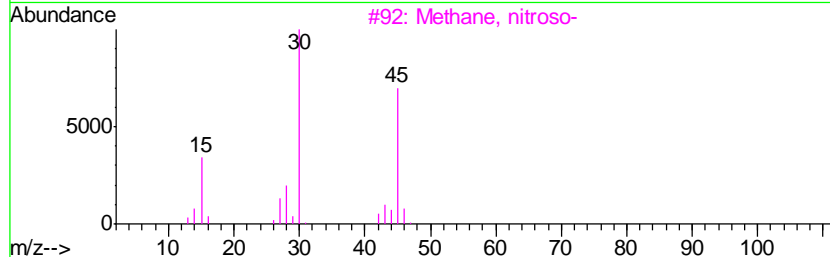
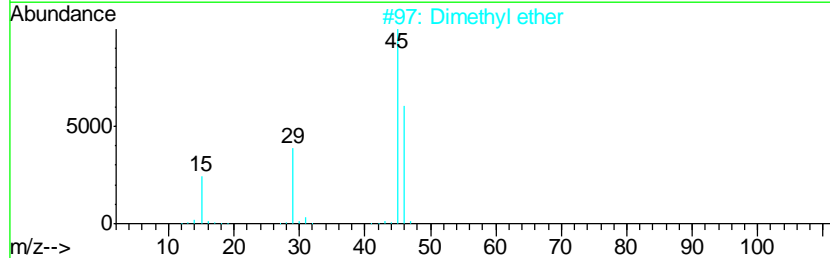
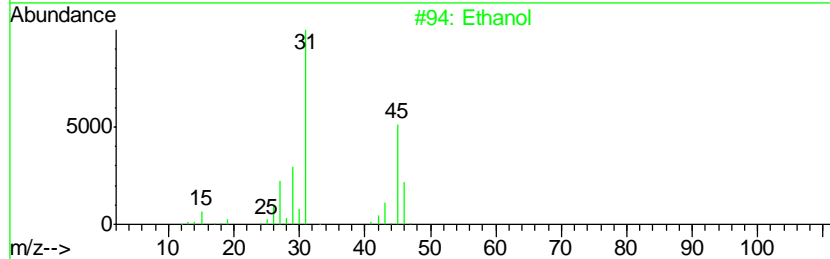
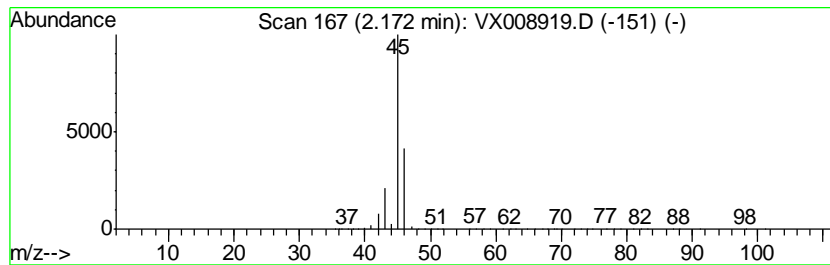
Quant Method : Z:\VOASRV\HPCHEM1\MSVOA\_X\METHOD\82X040319W.M  
 Quant Title : SW846 8260

TIC Library : C:\DATABASE\NIST11.L  
 TIC Integration Parameters: LSCINT.P

\*\*\*\*\*  
 Peak Number 2 Ethanol Concentration Rank 4

R.T.	EstConc	Area	Relative to ISTD	R.T.
2.17	1196.67 ug/l	18313800	Pentafluorobenzene	5.66

Hit#	of	Tentative ID	MW	MolForm	CAS#	Qual
1	5	Ethanol	46	C2H6O	000064-17-5	90
2		Dimethyl ether	46	C2H6O	000115-10-6	9
3		Methane, nitroso-	45	CH3NO	000865-40-7	4
4		Formic acid	46	CH2O2	000064-18-6	4
5		Oxalic acid	90	C2H2O4	000144-62-7	4



Data Path : Z:\VOASRV\HPCHEM1\MSVOA\_X\DATA\VX041219\  
 Data File : VX008919.D  
 Acq On : 13 Apr 2019 04:45  
 Operator : JC/SP  
 Sample : K2364-02  
 Misc : 5.0mL/MSVOA\_X/WATER  
 ALS Vial : 49 Sample Multiplier: 1

Instrument :  
 MSVOA\_X  
 ClientSampleID :  
 OR-COMP-2

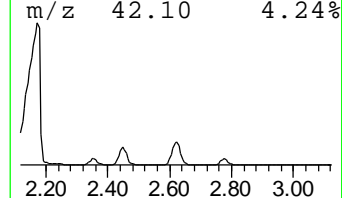
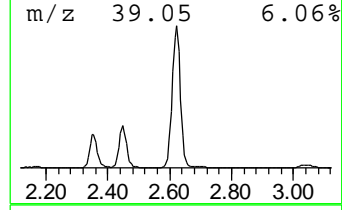
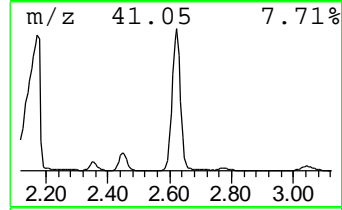
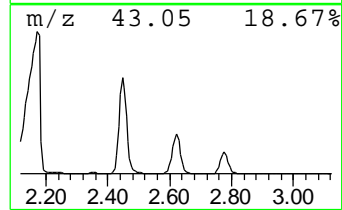
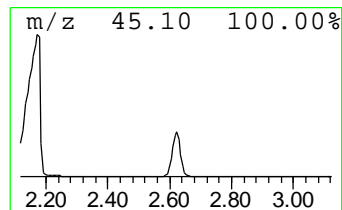
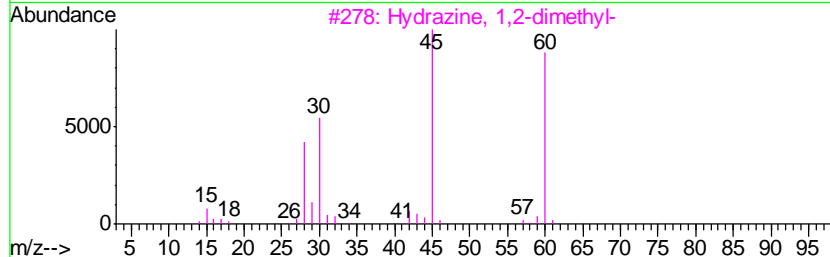
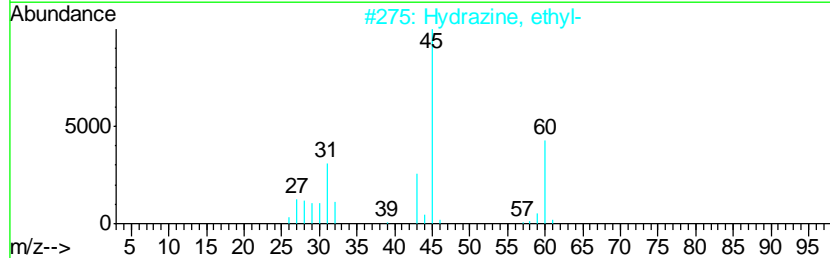
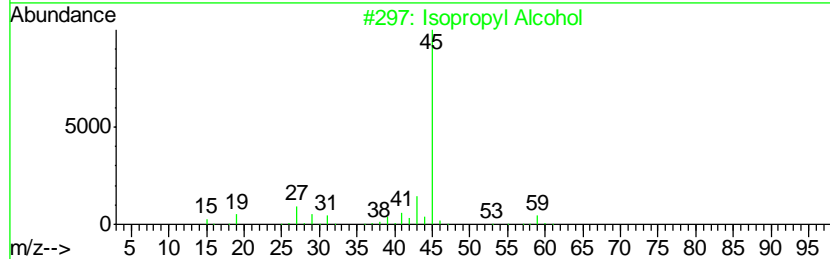
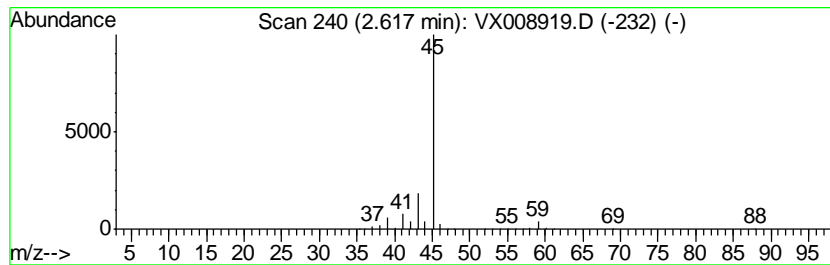
Quant Method : Z:\VOASRV\HPCHEM1\MSVOA\_X\METHOD\82X040319W.M  
 Quant Title : SW846 8260

TIC Library : C:\DATABASE\NIST11.L  
 TIC Integration Parameters: LSCINT.P

\*\*\*\*\*  
 Peak Number 3 Isopropyl Alcohol Concentration Rank 5

R.T.	EstConc	Area	Relative to ISTD	R.T.
2.62	205.10 ug/l	3138870	Pentafluorobenzene	5.66

Hit#	of	Tentative ID	MW	MolForm	CAS#	Qual
1	5	Isopropyl Alcohol	60	C3H8O	000067-63-0	86
2		Hydrazine, ethyl-	60	C2H8N2	000624-80-6	9
3		Hydrazine, 1,2-dimethyl-	60	C2H8N2	000540-73-8	9
4		Formamide	45	CH3NO	000075-12-7	5
5		4-Penten-2-ol	86	C5H10O	000625-31-0	4



Data Path : Z:\VOASRV\HPCHEM1\MSVOA\_X\DATA\VX041219\  
 Data File : VX008919.D  
 Acq On : 13 Apr 2019 04:45  
 Operator : JC/SP  
 Sample : K2364-02  
 Misc : 5.0mL/MSVOA\_X/WATER  
 ALS Vial : 49 Sample Multiplier: 1

Instrument :  
 MSVOA\_X  
 ClientSampleID :  
 OR-COMP-2

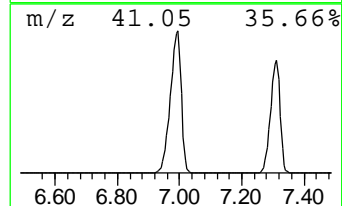
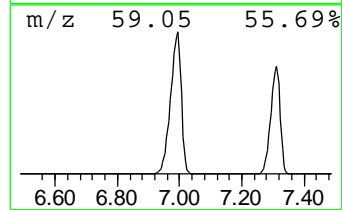
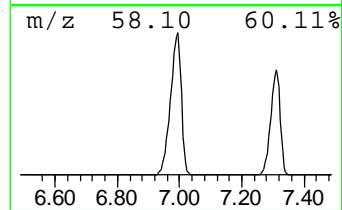
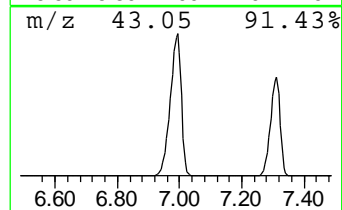
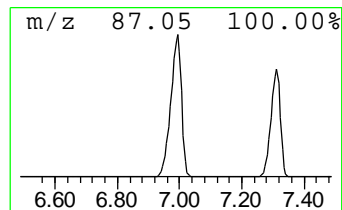
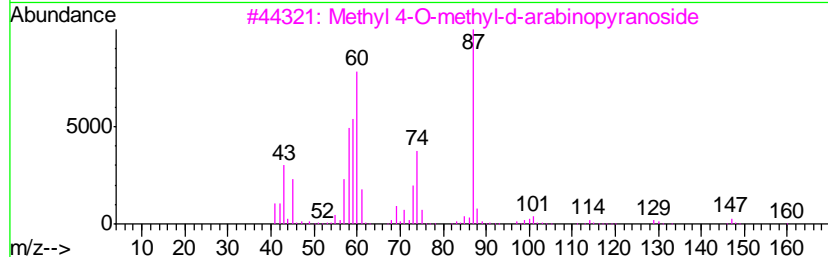
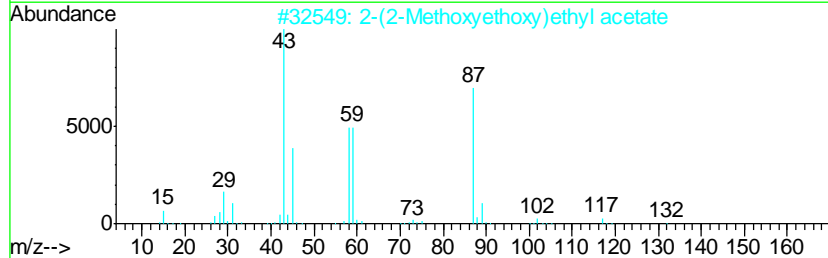
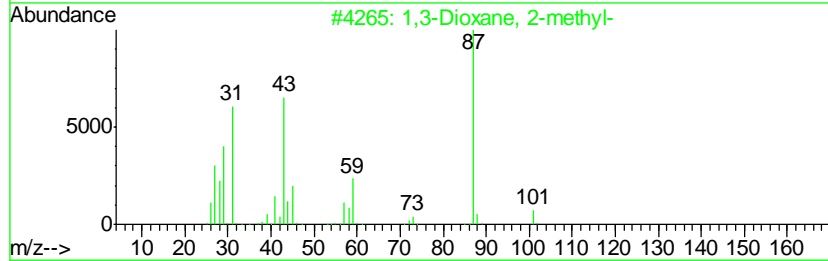
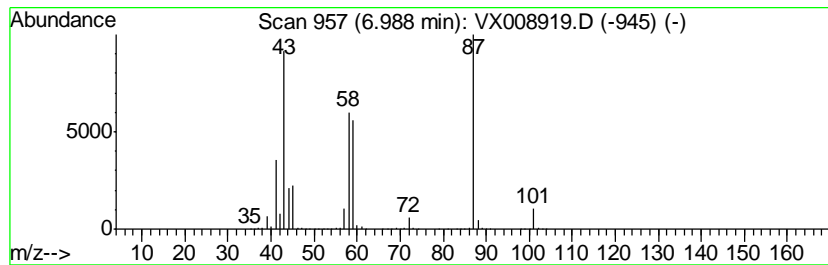
Quant Method : Z:\VOASRV\HPCHEM1\MSVOA\_X\METHOD\82X040319W.M  
 Quant Title : SW846 8260

TIC Library : C:\DATABASE\NIST11.L  
 TIC Integration Parameters: LSCINT.P

\*\*\*\*\*  
 Peak Number 4 1,3-Dioxane, 2-methyl- Concentration Rank 2

R.T.	EstConc	Area	Relative to ISTD	R.T.
6.99	2098.82 ug/l	32120400	1,4-Difluorobenzene	6.86

Hit#	of	Tentative ID	MW	MolForm	CAS#	Qual
1	5	1,3-Dioxane, 2-methyl-	102	C5H10O2	000626-68-6	53
2		2-(2-Methoxyethoxy)ethyl acetate	162	C7H14O4	1000351-95-4	38
3		Methyl 4-O-methyl-d-arabinopyran...	178	C7H14O5	1000129-79-9	36
4		Oxirane, (propoxymethyl)-	116	C6H12O2	003126-95-2	32
5		Oxazolidin-2-one	87	C3H5NO2	000497-25-6	32



Data Path : Z:\VOASRV\HPCHEM1\MSVOA\_X\DATA\VX041219\  
 Data File : VX008919.D  
 Acq On : 13 Apr 2019 04:45  
 Operator : JC/SP  
 Sample : K2364-02  
 Misc : 5.0mL/MSVOA\_X/WATER  
 ALS Vial : 49 Sample Multiplier: 1

Instrument :  
 MSVOA\_X  
 ClientSampled :  
 OR-COMP-2

Quant Method : Z:\VOASRV\HPCHEM1\MSVOA\_X\METHOD\82X040319W.M  
 Quant Title : SW846 8260

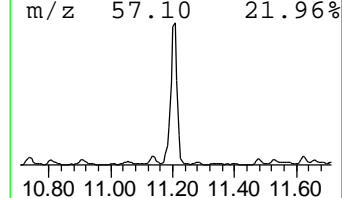
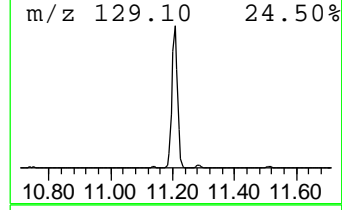
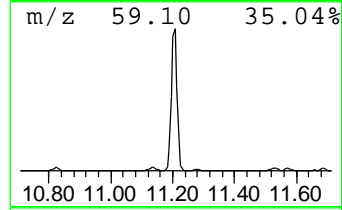
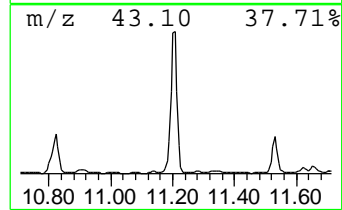
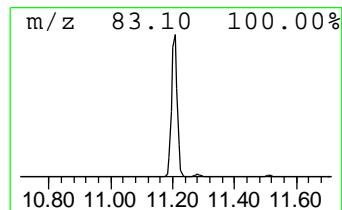
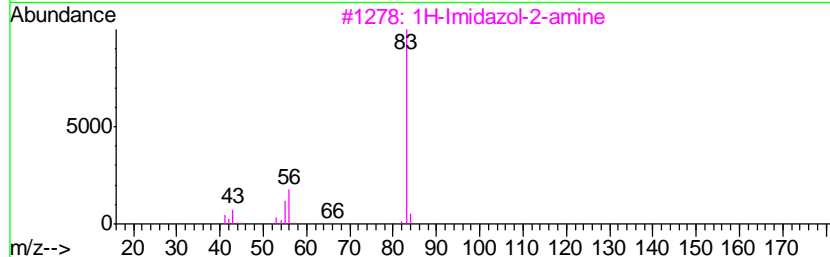
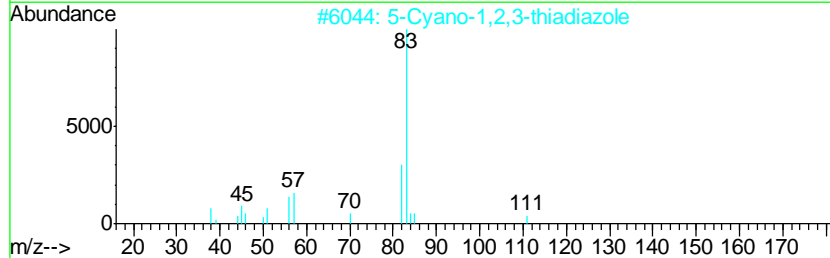
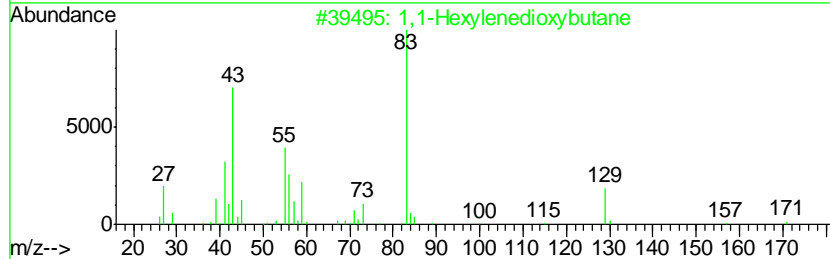
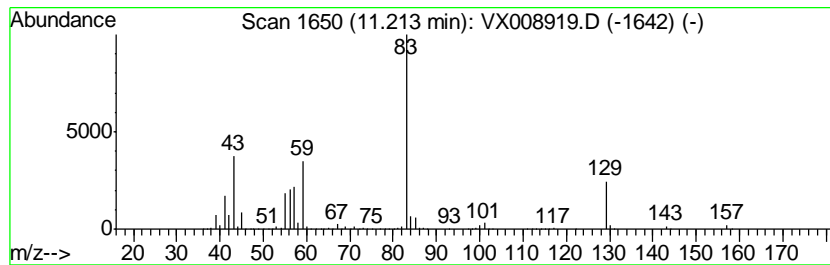
TIC Library : C:\DATABASE\NIST11.L  
 TIC Integration Parameters: LSCINT.P

\*\*\*\*\*  
 Peak Number 6 1,1-Hexylenedioxybutane Concentration Rank 6

R.T.	EstConc	Area	Relative to ISTD	R.T.
11.21	50.28 ug/l	1194290	1,4-Dichlorobenzene-d4	12.08

Hit#	of	Tentative ID	MW	MolForm	CAS#	Qual
1	5	1,1-Hexylenedioxybutane	172	C10H20O2	1000249-77-4	78
2		5-Cyano-1,2,3-thiadiazole	111	C3HN3S	057352-02-0	53
3		1H-Imidazol-2-amine	83	C3H5N3	007720-39-0	50
4		Cyclohexanone, 3,3,5-trimethyl-	140	C9H16O	000873-94-9	28
5		Oxalic acid, cyclohexyl nonyl ester	298	C17H30O4	1000309-31-1	25



Data Path : Z:\VOASRV\HPCHEM1\MSVOA\_X\DATA\VX041219\  
 Data File : VX008919.D  
 Acq On : 13 Apr 2019 04:45  
 Operator : JC/SP  
 Sample : K2364-02  
 Misc : 5.0mL/MSVOA\_X/WATER  
 ALS Vial : 49 Sample Multiplier: 1

Instrument :  
 MSVOA\_X  
 ClientSampled :  
 OR-COMP-2

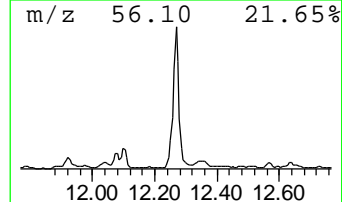
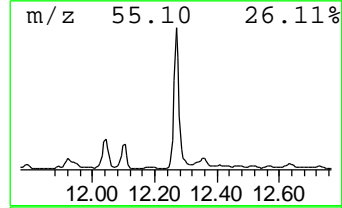
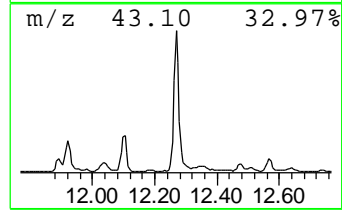
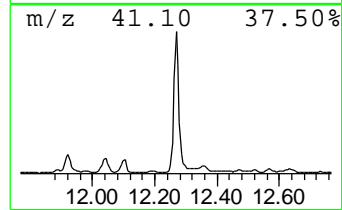
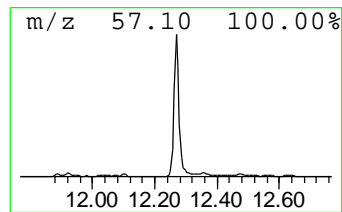
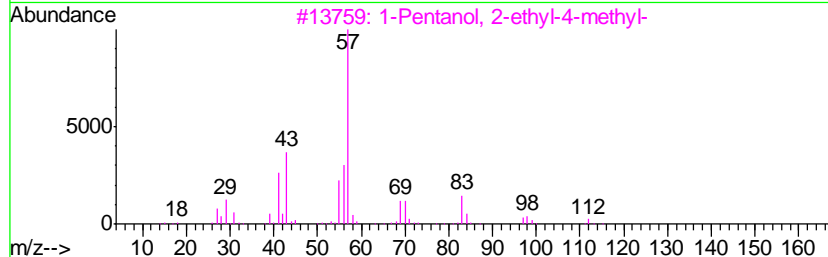
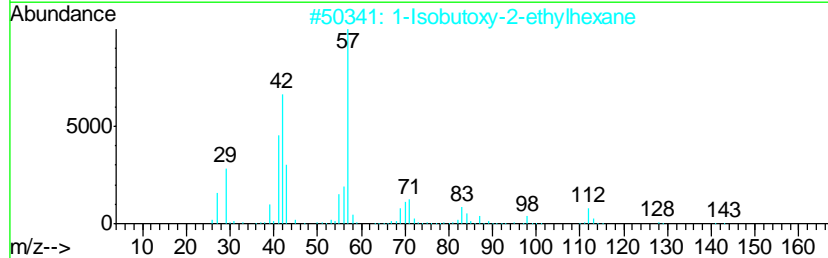
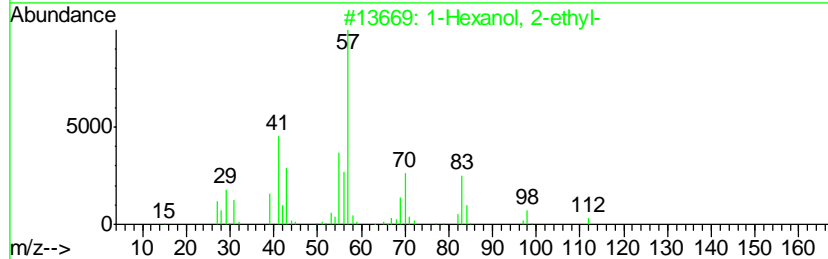
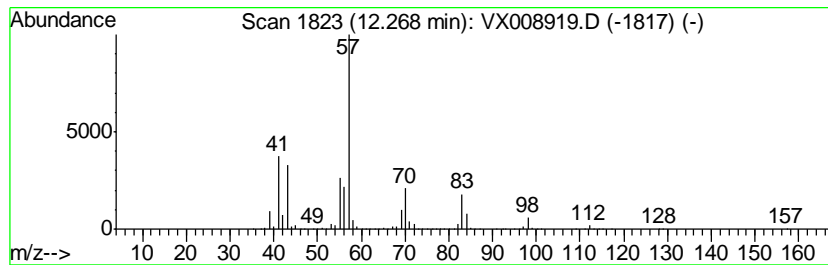
Quant Method : Z:\VOASRV\HPCHEM1\MSVOA\_X\METHOD\82X040319W.M  
 Quant Title : SW846 8260

TIC Library : C:\DATABASE\NIST11.L  
 TIC Integration Parameters: LSCINT.P

\*\*\*\*\*  
 Peak Number 7 1-Hexanol, 2-ethyl- Concentration Rank 7

R.T.	EstConc	Area	Relative to ISTD	R.T.
12.27	50.00 ug/l	1187560	1,4-Dichlorobenzene-d4	12.08

Hit#	of	Tentative ID	MW	MolForm	CAS#	Qual
1	5	1-Hexanol, 2-ethyl-	130	C8H18O	000104-76-7	64
2		1-Isobutoxy-2-ethylhexane	186	C12H26O	1000139-90-3	56
3		1-Pentanol, 2-ethyl-4-methyl-	130	C8H18O	000106-67-2	56
4		2-Ethyl-1-hexanol, methyl ether	144	C9H20O	1000365-10-2	53
5		2-Propyl-1-pentanol	130	C8H18O	058175-57-8	50



Data Path : Z:\VOASRV\HPCHEM1\MSVOA\_X\DATA\VX041219\  
Data File : VX008919.D  
Acq On : 13 Apr 2019 04:45  
Operator : JC/SP  
Sample : K2364-02  
Misc : 5.0mL/MSVOA\_X/WATER  
ALS Vial : 49 Sample Multiplier: 1

Instrument :  
MSVOA\_X  
ClientSampleId :  
OR-COMP-2

Quant Method : Z:\VOASRV\HPCHEM1\MSVOA\_X\METHOD\82X040319W.M  
Quant Title : SW846 8260

TIC Library : C:\DATABASE\NIST11.L  
TIC Integration Parameters: LSCINT.P

TIC Top Hit name	RT	EstConc	Units	Response	--Internal Standard--			
					#	RT	Resp	Conc
Ethanol	2.17	1196.7	ug/l	18313800	1	5.66	765201	50.0
Isopropyl Alcohol	2.62	205.1	ug/l	3138870	1	5.66	765201	50.0
1,3-Dioxane, 2-me...	6.99	2098.8	ug/l	32120400	2	6.86	765201	50.0
1,1-Hexylenedioxy...	11.21	50.3	ug/l	1194290	4	12.08	1187560	50.0
1-Hexanol, 2-ethyl-	12.27	50.0	ug/l	1187560	4	12.08	1187560	50.0