

Data Path : Z:\voasrv\HPCHEM1\MSVOA_X\Data\VX041222\
 Data File : VX028056.D
 Acq On : 12 Apr 2022 15:05
 Operator : JC/MD
 Sample : VX0412WBL01
 Misc : 5.0mL/MSVOA_X/WATER
 ALS Vial : 13 Sample Multiplier: 1

Instrument :
 MSVOA_X
 ClientSampleId :
 VX0412WBL01

Integration Parameters: RTEINT.P

Integrator: RTE
 Smoothing : ON Filtering: 5
 Sampling : 1 Min Area: 3 % of largest Peak
 Start Thrs: 0.2 Max Peaks: 100
 Stop Thrs : 0 Peak Location: TOP

If leading or trailing edge < 100 prefer < Baseline drop else tangent >
 Peak separation: 5

Method : Z:\voasrv\HPCHEM1\MSVOA_X\Method\82X041222W.M
 Title : SW846 8260

Signal : TIC: VX028056.D\data.ms

peak #	R.T. min	first scan	max scan	last scan	PK TY	peak height	corr. area	corr. % max.	% of total
1	1.581	74	81	82	rBV5	18169	33130	2.44%	0.458%
2	5.385	692	705	719	rBV	161175	472286	34.78%	6.535%
3	5.549	721	732	746	rVB	251599	715905	52.72%	9.906%
4	5.958	786	799	812	rBV	180185	467201	34.40%	6.465%
5	6.763	920	931	942	rBV	417084	972656	71.63%	13.459%
6	8.646	1233	1240	1251	rBV	857145	1357972	100.00%	18.791%
7	10.055	1464	1471	1481	rBV	897243	1205789	88.79%	16.685%
8	11.079	1634	1639	1650	rBV	688167	895500	65.94%	12.391%
9	12.024	1788	1794	1803	rBV	875647	1106324	81.47%	15.309%

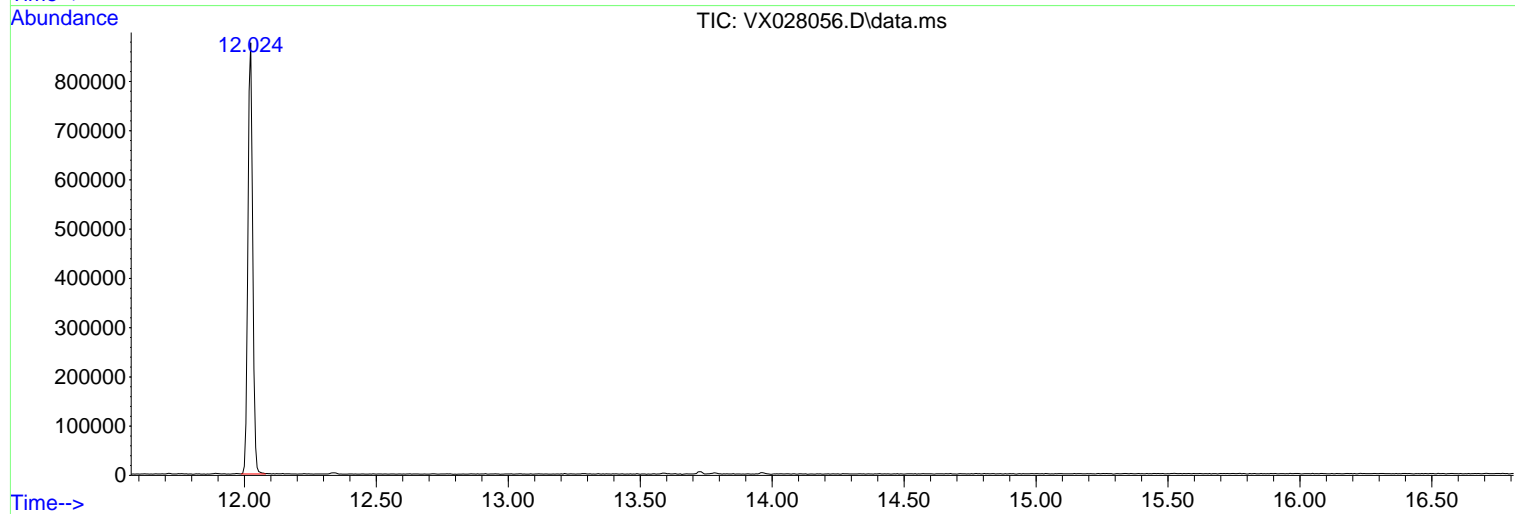
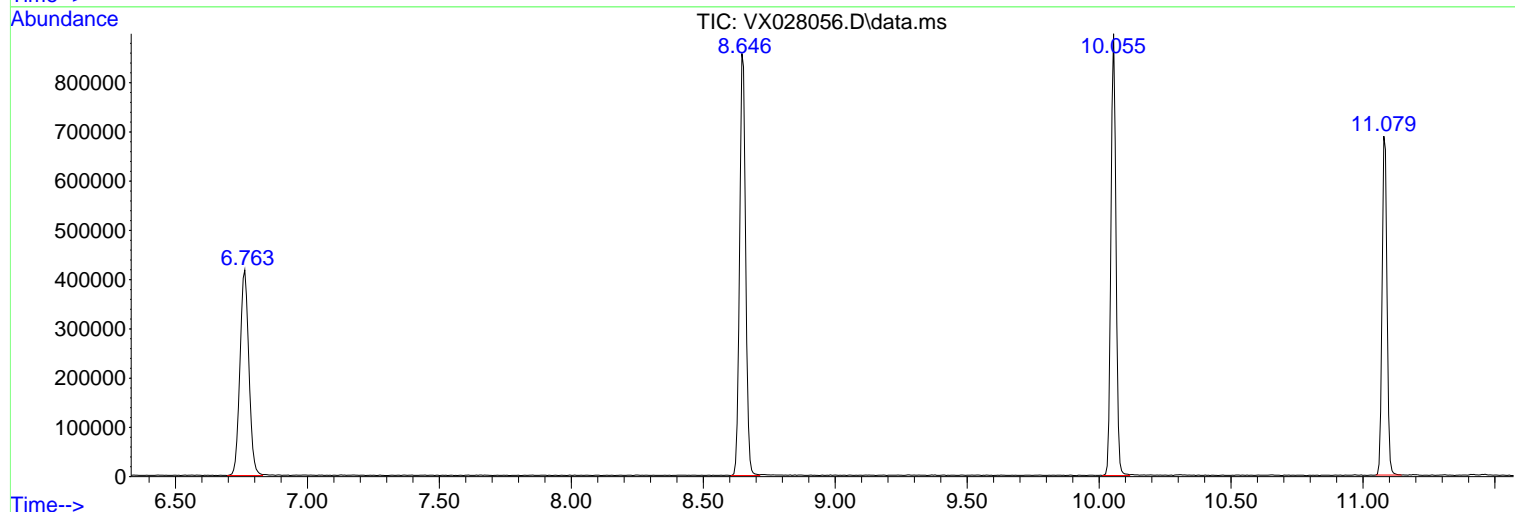
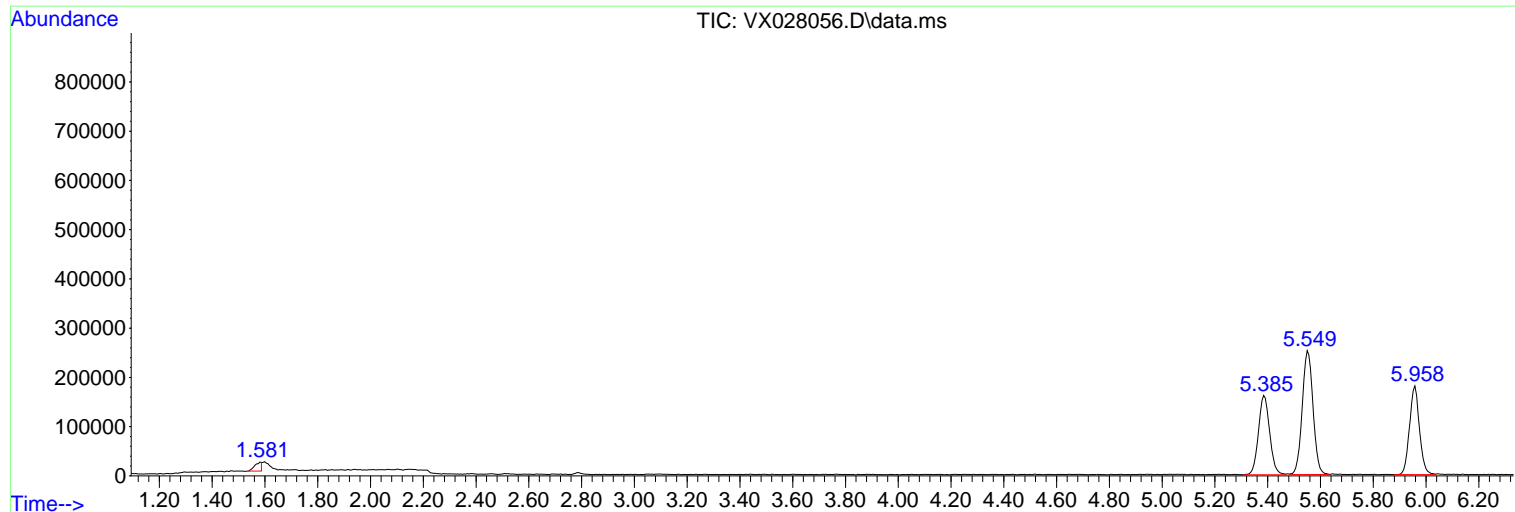
Sum of corrected areas: 7226763

Data Path : Z:\voasrv\HPCHEM1\MSVOA_X\Data\VX041222\
 Data File : VX028056.D
 Acq On : 12 Apr 2022 15:05
 Operator : JC/MD
 Sample : VX0412WBL01
 Misc : 5.0mL/MSVOA_X/WATER
 ALS Vial : 13 Sample Multiplier: 1

Instrument :
 MSVOA_X
 ClientSampleId :
 VX0412WBL01

Quant Method : Z:\voasrv\HPCHEM1\MSVOA_X\Method\82X041222W.M
 Quant Title : SW846 8260

TIC Library : C:\Database\NIST20.L
 TIC Integration Parameters: LSCINT.P



Library Search Compound Report

Data Path : Z:\voasrv\HPCHEM1\MSVOA_X\Data\VX041222\
Data File : VX028056.D
Acq On : 12 Apr 2022 15:05
Operator : JC/MD
Sample : VX0412WBL01
Misc : 5.0mL/MSVOA_X/WATER
ALS Vial : 13 Sample Multiplier: 1

Instrument :
MSVOA_X
ClientSampleId :
VX0412WBL01

Quant Method : Z:\voasrv\HPCHEM1\MSVOA_X\Method\82X041222W.M
Quant Title : SW846 8260

TIC Library : C:\Database\NIST20.L
TIC Integration Parameters: LSCINT.P

No Library Search Compounds Detected

Data Path : Z:\voasrv\HPCHEM1\MSVOA_X\Data\VX041222\
Data File : VX028056.D
Acq On : 12 Apr 2022 15:05
Operator : JC/MD
Sample : VX0412WBL01
Misc : 5.0mL/MSVOA_X/WATER
ALS Vial : 13 Sample Multiplier: 1

Instrument :
MSVOA_X
ClientSampleId :
VX0412WBL01

Quant Method : Z:\voasrv\HPCHEM1\MSVOA_X\Method\82X041222W.M
Quant Title : SW846 8260

TIC Library : C:\Database\NIST20.L
TIC Integration Parameters: LSCINT.P

TIC Top Hit name	RT	EstConc	Units	Response	--Internal Standard--			
					#	RT	Resp	Conc
