

Data Path : Z:\voasrv\HPCHEM1\MSVOA_X\Data\VX041222\
 Data File : VX028075.D
 Acq On : 12 Apr 2022 22:36
 Operator : JC/MD
 Sample : N2334-10
 Misc : 5.0mL/MSVOA_X/WATER
 ALS Vial : 32 Sample Multiplier: 1

Instrument :
 MSVOA_X
 ClientSampleId :
 MW-25

Integration Parameters: RTEINT.P

Integrator: RTE
 Smoothing : ON Filtering: 5
 Sampling : 1 Min Area: 3 % of largest Peak
 Start Thrs: 0.2 Max Peaks: 100
 Stop Thrs : 0 Peak Location: TOP

If leading or trailing edge < 100 prefer < Baseline drop else tangent >
 Peak separation: 5

Method : Z:\voasrv\HPCHEM1\MSVOA_X\Method\82X041222W.M
 Title : SW846 8260

Signal : TIC: VX028075.D\data.ms

peak #	R.T. min	first scan	max scan	last scan	PK TY	peak height	corr. area	corr. % max.	% of total
1	1.258	23	28	47	rBV	293596	1240835	100.00%	15.358%
2	1.551	70	76	87	rVB	105549	327027	26.36%	4.048%
3	2.532	229	237	245	rBV2	11714	30843	2.49%	0.382%
4	2.947	296	305	319	rVB2	9973	29644	2.39%	0.367%
5	5.391	693	706	720	rBV2	145324	423708	34.15%	5.244%
6	5.556	720	733	747	rVB	216062	622343	50.16%	7.703%
7	5.958	788	799	810	rBV2	152722	407709	32.86%	5.046%
8	6.763	921	931	944	rBV	370314	857647	69.12%	10.615%
9	8.653	1234	1241	1254	rBV	764318	1205938	97.19%	14.926%
10	10.055	1465	1471	1484	rBV	812438	1075709	86.69%	13.314%
11	11.085	1634	1640	1650	rVB	615449	813057	65.52%	10.063%
12	12.024	1788	1794	1802	rBV	837771	1027713	82.82%	12.720%
13	12.219	1821	1826	1831	rBV	11514	17490	1.41%	0.216%

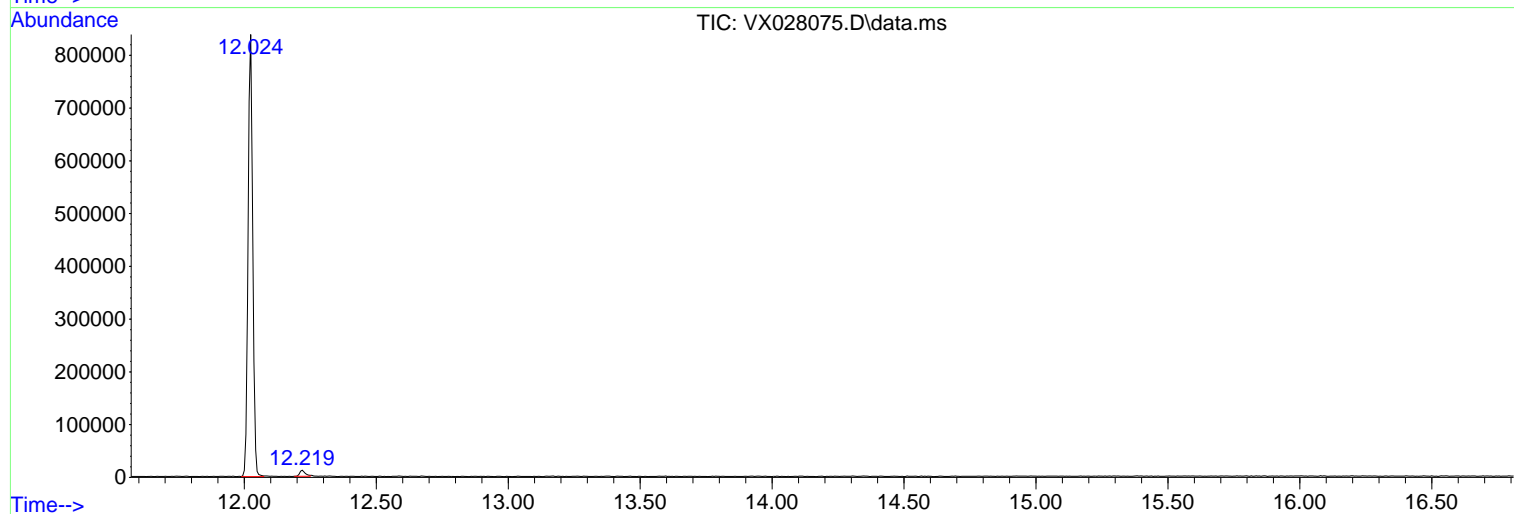
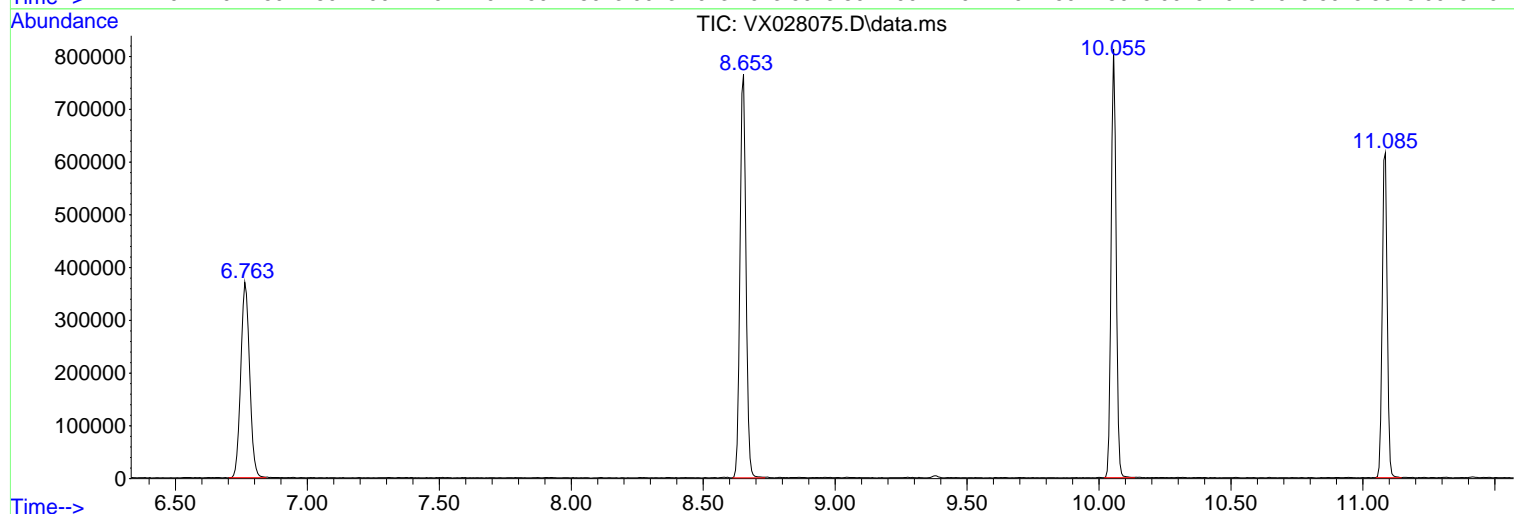
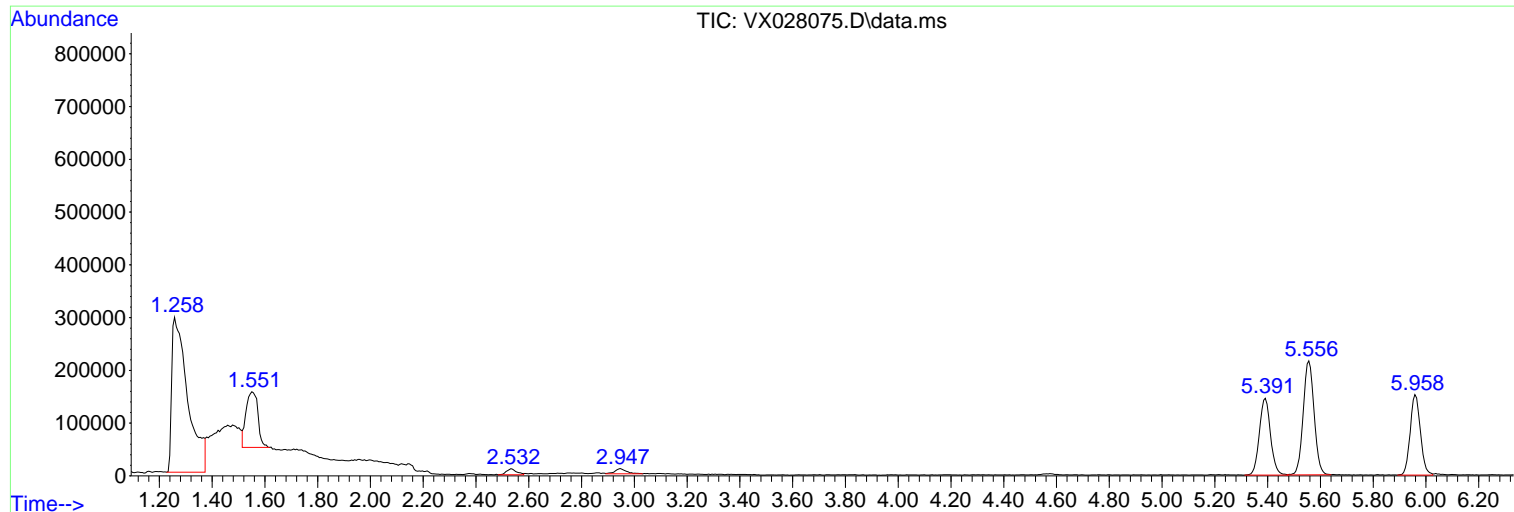
Sum of corrected areas: 8079663

Data Path : Z:\voasrv\HPCHEM1\MSVOA_X\Data\VX041222\
Data File : VX028075.D
Acq On : 12 Apr 2022 22:36
Operator : JC/MD
Sample : N2334-10
Misc : 5.0mL/MSVOA_X/WATER
ALS Vial : 32 Sample Multiplier: 1

Instrument :
MSVOA_X
ClientSampleId :
MW-25

Quant Method : Z:\voasrv\HPCHEM1\MSVOA_X\Method\82X041222W.M
Quant Title : SW846 8260

TIC Library : C:\Database\NIST20.L
TIC Integration Parameters: LSCINT.P



Data Path : Z:\voasrv\HPCHEM1\MSVOA_X\Data\VX041222\
 Data File : VX028075.D
 Acq On : 12 Apr 2022 22:36
 Operator : JC/MD
 Sample : N2334-10
 Misc : 5.0mL/MSVOA_X/WATER
 ALS Vial : 32 Sample Multiplier: 1

Instrument :
 MSVOA_X
 ClientSampleId :
 MW-25

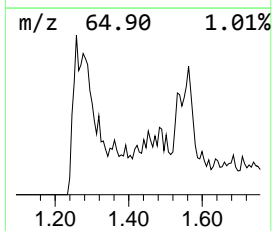
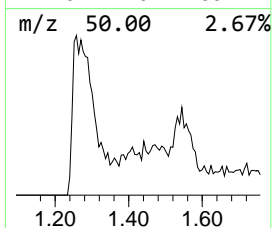
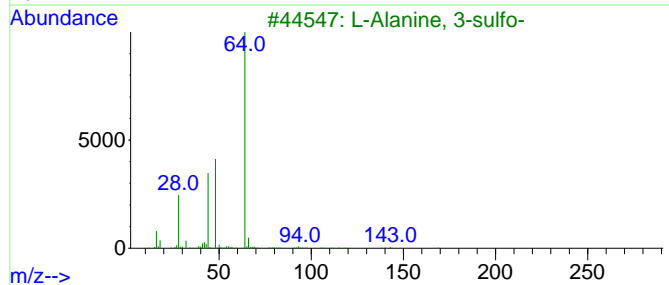
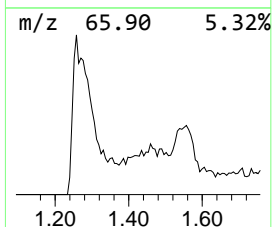
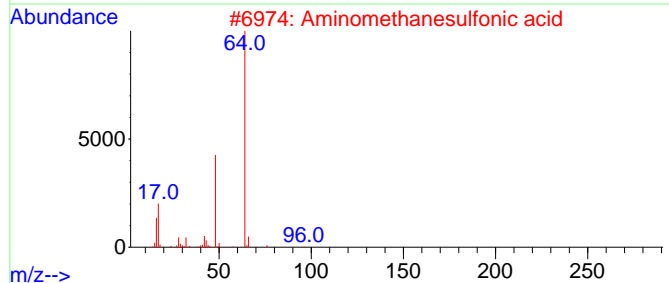
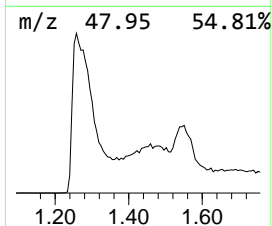
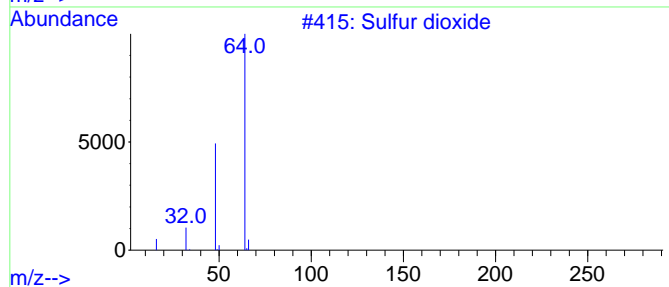
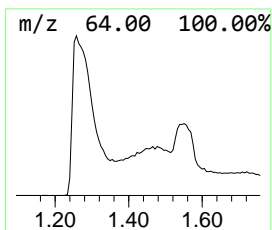
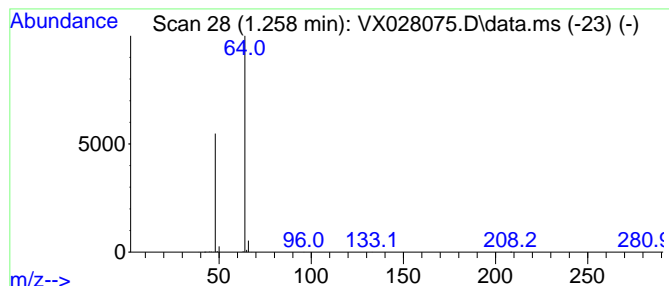
Quant Method : Z:\voasrv\HPCHEM1\MSVOA_X\Method\82X041222W.M
 Quant Title : SW846 8260

TIC Library : C:\Database\NIST20.L
 TIC Integration Parameters: LSCINT.P

 Peak Number 1 Sulfur dioxide Concentration Rank 1

R.T.	EstConc	Area	Relative to ISTD	R.T.
1.258	99.69 ug/l	1240840	Pentafluorobenzene	5.556

Hit#	of	5	Tentative ID	MW	MolForm	CAS#	Qual
1			Sulfur dioxide	64	O2S	007446-09-5	83
2			Aminomethanesulfonic acid	111	CH5NO3S	013881-91-9	74
3			L-Alanine, 3-sulfo-	169	C3H7NO5S	000498-40-8	9
4			Ethene, 1,1-difluoro-	64	C2H2F2	000075-38-7	4
5			Ethyl Chloride	64	C2H5Cl	000075-00-3	3



Data Path : Z:\voasrv\HPCHEM1\MSVOA_X\Data\VX041222\
Data File : VX028075.D
Acq On : 12 Apr 2022 22:36
Operator : JC/MD
Sample : N2334-10
Misc : 5.0mL/MSVOA_X/WATER
ALS Vial : 32 Sample Multiplier: 1

Instrument :
MSVOA_X
ClientSampleId :
MW-25

Quant Method : Z:\voasrv\HPCHEM1\MSVOA_X\Method\82X041222W.M
Quant Title : SW846 8260

TIC Library : C:\Database\NIST20.L
TIC Integration Parameters: LSCINT.P

TIC Top Hit name	RT	EstConc	Units	Response	--Internal Standard--			
					#	RT	Resp	Conc
Sulfur dioxide	1.258	99.7	ug/l	1240840	1	5.556	622343	50.0
L-Alanine, 3-su...	1.551	26.3	ug/l	327027	1	5.556	622343	50.0