

Data Path : Z:\voasrv\HPCHEM1\MSVOA_X\Data\VX041224\
 Data File : VX041059.D
 Acq On : 13 Apr 2024 02:18
 Operator : JC/MD
 Sample : P2098-11 100X
 Misc : 5.0mL/MSVOA_X/WATER
 ALS Vial : 47 Sample Multiplier: 1

Instrument :
 MSVOA_X
 ClientSampleId :
 MCORA6

Integration Parameters: LSCINT.P

Integrator: RTE
 Smoothing : OFF
 Sampling : 1
 Start Thrs : 0.2
 Stop Thrs : 0

Filtering: 5
 Min Area: 0 % of largest Peak
 Max Peaks: 100
 Peak Location: TOP

If leading or trailing edge < 100 prefer < Baseline drop else tangent >
 Peak separation: 5

Method : Z:\voasrv\HPCHEM1\MSVOA_X\Method\SFAMXML041024WMA.M
 Title : VOC Analysis

Signal : TIC: VX041059.D\data.ms

peak #	R.T. min	first scan	max scan	last scan	PK TY	peak height	corr. area	corr. % max.	% of total
1	1.368	43	46	58	rVB	122513	133929	14.17%	1.843%
2	1.672	91	96	113	rVB	84932	129584	13.71%	1.783%
3	2.307	194	200	209	rBV	202279	311657	32.96%	4.288%
4	2.459	223	225	229	rBV4	281	350	0.04%	0.005%
5	2.526	233	236	242	rVB2	1420	2591	0.27%	0.036%
6	2.611	248	250	251	rBV	163	154	0.02%	0.002%
7	2.691	260	263	264	rBV	132	173	0.02%	0.002%
8	2.794	273	280	284	rBV4	1015	1934	0.20%	0.027%
9	2.843	287	288	291	rBV	208	144	0.02%	0.002%
10	2.947	298	305	313	rVB	5744	12977	1.37%	0.179%
11	3.117	331	333	337	rBV2	214	301	0.03%	0.004%
12	3.251	353	355	358	rVB	153	160	0.02%	0.002%
13	3.319	365	366	371	rVV2	167	211	0.02%	0.003%
14	3.379	373	376	378	rVV2	122	159	0.02%	0.002%
15	3.410	380	381	386	rBV2	138	195	0.02%	0.003%
16	3.575	405	408	410	rVV2	165	173	0.02%	0.002%
17	3.611	413	414	418	rVB2	203	164	0.02%	0.002%
18	4.026	481	482	484	rBV	222	183	0.02%	0.003%
19	4.172	504	506	509	rBV2	108	153	0.02%	0.002%
20	4.459	544	553	566	rBV	72608	220968	23.37%	3.040%
21	5.056	639	651	667	rBV	123802	381615	40.36%	5.251%
22	5.349	697	699	701	rBV2	209	125	0.01%	0.002%
23	5.379	701	704	705	rVV	336	270	0.03%	0.004%
24	5.397	705	707	709	rVV	475	428	0.05%	0.006%
25	5.525	724	728	730	rBV2	164	254	0.03%	0.003%
26	5.550	730	732	738	rVV3	401	792	0.08%	0.011%
27	5.617	741	743	746	rBV2	187	205	0.02%	0.003%
28	5.818	774	776	779	rBV2	141	164	0.02%	0.002%
29	5.842	779	780	783	rVV	203	155	0.02%	0.002%
30	5.970	788	801	834	rBV2	311441	945460	100.00%	13.008%
31	6.190	834	837	838	rVV2	273	327	0.03%	0.004%
32	6.208	838	840	843	rVB	348	237	0.03%	0.003%
33	6.605	903	905	908	rBV2	120	145	0.02%	0.002%
34	6.684	916	918	921	rBV2	121	174	0.02%	0.002%
35	6.763	921	931	950	rBV	217331	525294	55.56%	7.227%
36	7.117	983	989	998	rVV5	1806	4304	0.46%	0.059%

Data Path : Z:\voasrv\HPCHEM1\MSVOA_X\Data\VX041224\
 Data File : VX041059.D
 Acq On : 13 Apr 2024 02:18
 Operator : JC/MD
 Sample : P2098-11 100X
 Misc : 5.0mL/MSVOA_X/WATER
 ALS Vial : 47 Sample Multiplier: 1

Instrument :
 MSVOA_X
 ClientSampleId :
 MCORA6

Integration Parameters: LSCINT.P

Integrator: RTE
 Smoothing : OFF
 Sampling : 1
 Start Thrs : 0.2
 Stop Thrs : 0

Filtering: 5
 Min Area: 0 % of largest Peak
 Max Peaks: 100
 Peak Location: TOP

If leading or trailing edge < 100 prefer < Baseline drop else tangent >
 Peak separation: 5

Method : Z:\voasrv\HPCHEM1\MSVOA_X\Method\SFAMXML041024WMA.M
 Title : VOC Analysis

37	7.306	1011	1020	1040	rBV	187051	417925	44.20%	5.750%
38	7.482	1046	1049	1050	rBV2	452	338	0.04%	0.005%
39	7.647	1075	1076	1080	rVB	197	177	0.02%	0.002%
40	7.690	1080	1083	1084	rBV2	163	185	0.02%	0.003%
41	7.775	1096	1097	1102	rVB2	167	234	0.02%	0.003%
42	7.964	1125	1128	1129	rBV	127	152	0.02%	0.002%
43	8.068	1144	1145	1149	rBV2	102	133	0.01%	0.002%
44	8.214	1167	1169	1171	rBV2	132	145	0.02%	0.002%
45	8.324	1181	1187	1203	rBV	121106	199218	21.07%	2.741%
46	8.586	1227	1230	1234	rVB3	424	376	0.04%	0.005%
47	8.647	1234	1240	1261	rBV	480606	770087	81.45%	10.595%
48	8.952	1284	1290	1305	rBV	89895	132052	13.97%	1.817%
49	9.275	1339	1343	1346	rBV2	878	1091	0.12%	0.015%
50	9.384	1356	1361	1382	rBV	319354	477871	50.54%	6.575%
51	9.616	1397	1399	1400	rBV2	253	166	0.02%	0.002%
52	9.665	1405	1407	1409	rBV2	217	182	0.02%	0.003%
53	9.702	1409	1413	1418	rVB	998	1236	0.13%	0.017%
54	9.793	1426	1428	1430	rVB	154	124	0.01%	0.002%
55	9.927	1448	1450	1452	rBV	148	131	0.01%	0.002%
56	9.958	1452	1455	1458	rBV	134	226	0.02%	0.003%
57	10.055	1465	1471	1491	rBV	468883	649444	68.69%	8.936%
58	10.195	1491	1494	1495	rBV3	443	355	0.04%	0.005%
59	10.311	1509	1513	1516	rVB2	364	417	0.04%	0.006%
60	10.366	1520	1522	1525	rBV2	154	131	0.01%	0.002%
61	10.390	1525	1526	1530	rVB	217	188	0.02%	0.003%
62	10.439	1532	1534	1538	rVB2	145	138	0.01%	0.002%
63	10.592	1556	1559	1562	rBV	149	183	0.02%	0.003%
64	10.640	1565	1567	1571	rBV3	350	356	0.04%	0.005%
65	10.738	1582	1583	1585	rBV	173	147	0.02%	0.002%
66	10.768	1585	1588	1591	rVV	144	181	0.02%	0.002%
67	10.970	1616	1621	1625	rVB3	395	622	0.07%	0.009%
68	11.012	1625	1628	1631	rBV2	120	177	0.02%	0.002%
69	11.098	1638	1642	1645	rVV4	547	806	0.09%	0.011%
70	11.128	1645	1647	1649	rVV	141	131	0.01%	0.002%
71	11.189	1652	1657	1671	rVV	383031	495474	52.41%	6.817%
72	11.311	1673	1677	1682	rVV2	2287	3032	0.32%	0.042%
73	11.372	1685	1687	1690	rVB2	154	135	0.01%	0.002%
74	11.457	1698	1701	1705	rVV2	330	413	0.04%	0.006%
75	11.707	1739	1742	1745	rVV2	336	337	0.04%	0.005%
76	11.756	1748	1750	1755	rVB2	404	541	0.06%	0.007%

Data Path : Z:\voasrv\HPCHEM1\MSVOA_X\Data\VX041224\
 Data File : VX041059.D
 Acq On : 13 Apr 2024 02:18
 Operator : JC/MD
 Sample : P2098-11 100X
 Misc : 5.0mL/MSVOA_X/WATER
 ALS Vial : 47 Sample Multiplier: 1

Instrument :
 MSVOA_X
 ClientSampleId :
 MCORA6

Integration Parameters: LSCINT.P

Integrator: RTE
 Smoothing : OFF Filtering: 5
 Sampling : 1 Min Area: 0 % of largest Peak
 Start Thrs: 0.2 Max Peaks: 100
 Stop Thrs : 0 Peak Location: TOP

If leading or trailing edge < 100 prefer < Baseline drop else tangent >
 Peak separation: 5

Method : Z:\voasrv\HPCHEM1\MSVOA_X\Method\SFAMXML041024WMA.M
 Title : VOC Analysis

77	11.799	1755	1757	1759	rBV2	194	164	0.02%	0.002%
78	11.902	1773	1774	1779	rVB2	150	158	0.02%	0.002%
79	11.975	1782	1786	1788	rBV2	818	868	0.09%	0.012%
80	12.024	1788	1794	1805	rBV	515479	661861	70.00%	9.106%
81	12.317	1837	1842	1856	rBV	585154	752326	79.57%	10.351%
82	12.603	1887	1889	1891	rBV2	244	163	0.02%	0.002%
83	12.762	1911	1915	1920	rVB	4102	5611	0.59%	0.077%
84	12.884	1932	1935	1938	rBV2	141	142	0.02%	0.002%
85	13.195	1983	1986	1989	rBV	260	319	0.03%	0.004%
86	13.268	1996	1998	2002	rVB2	178	171	0.02%	0.002%
87	13.402	2018	2020	2021	rVV	217	131	0.01%	0.002%
88	13.420	2021	2023	2025	rVV	242	182	0.02%	0.003%
89	13.597	2048	2052	2059	rVB2	1413	2113	0.22%	0.029%
90	13.658	2059	2062	2066	rBV2	159	276	0.03%	0.004%
91	13.731	2073	2074	2076	rBV	141	127	0.01%	0.002%
92	13.786	2079	2083	2085	rBV2	324	495	0.05%	0.007%
93	13.841	2091	2092	2097	rBV2	215	283	0.03%	0.004%
94	13.969	2110	2113	2114	rBV2	355	302	0.03%	0.004%
95	14.073	2128	2130	2131	rBV	266	180	0.02%	0.002%
96	14.128	2134	2139	2145	rBV	4653	6735	0.71%	0.093%
97	14.579	2212	2213	2216	rBV	268	285	0.03%	0.004%
98	15.304	2330	2332	2334	rBV2	294	265	0.03%	0.004%
99	15.390	2342	2346	2351	rBV3	2037	3442	0.36%	0.047%
100	15.975	2440	2442	2443	rBV	368	166	0.02%	0.002%

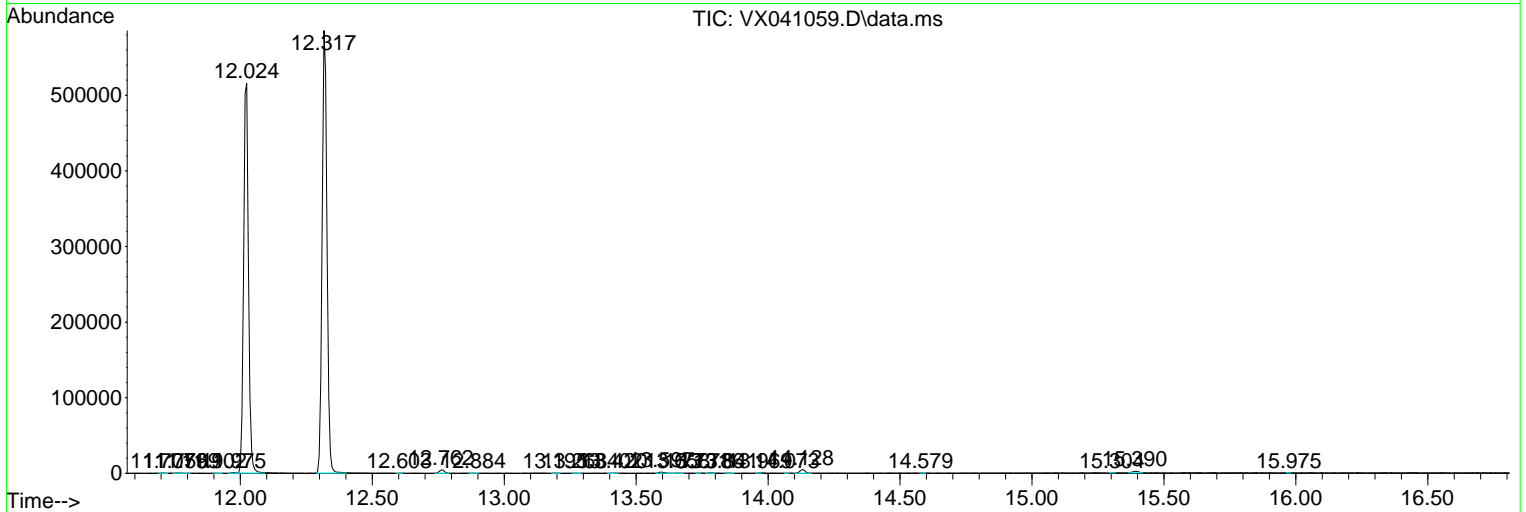
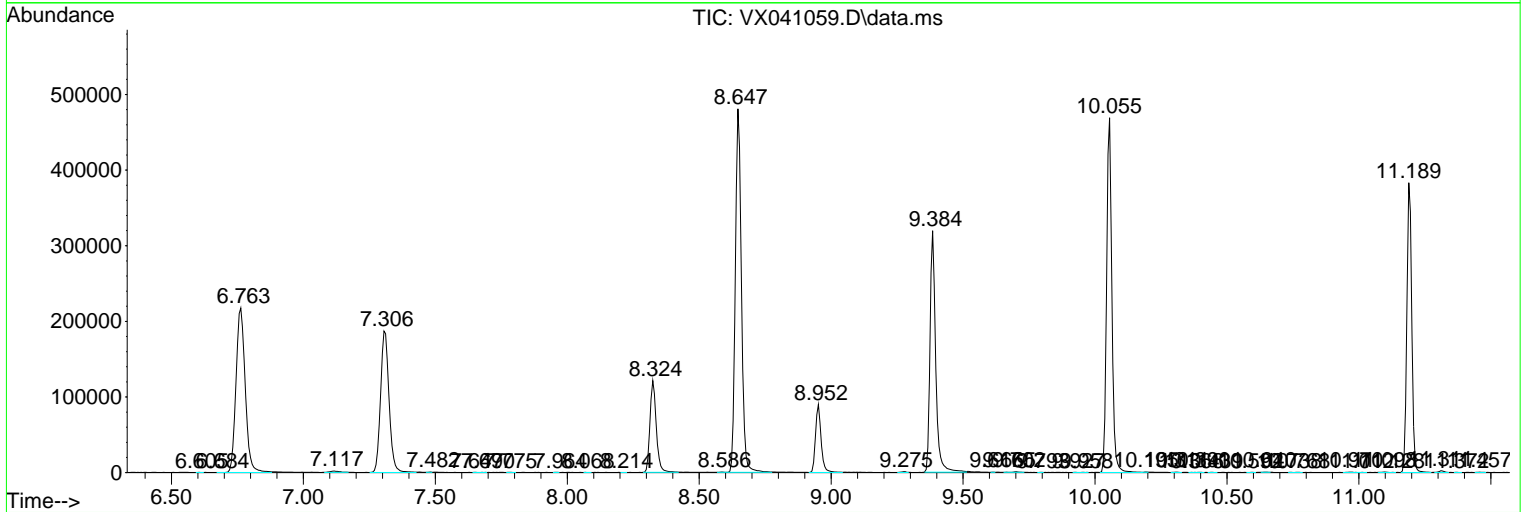
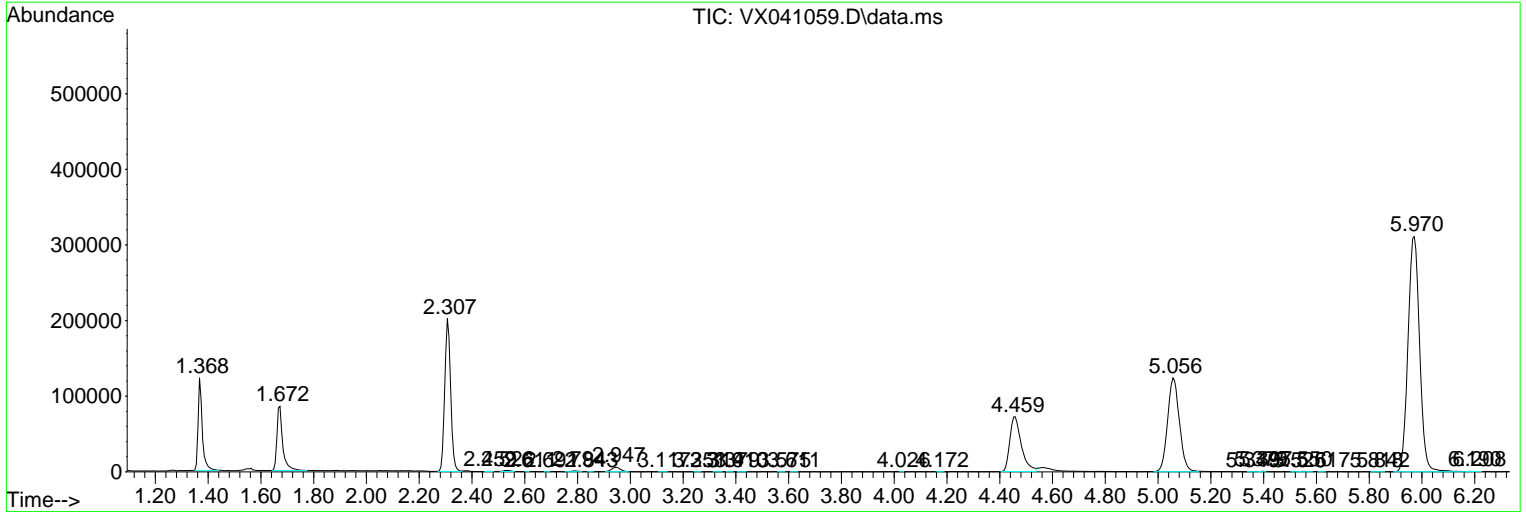
Sum of corrected areas: 7268131

Data Path : Z:\voasrv\HPCHEM1\MSVOA_X\Data\VX041224\
 Data File : VX041059.D
 Acq On : 13 Apr 2024 02:18
 Operator : JC/MD
 Sample : P2098-11 100X
 Misc : 5.0mL/MSVOA_X/WATER
 ALS Vial : 47 Sample Multiplier: 1

Instrument :
 MSVOA_X
 ClientSampleId :
 MCORA6

Quant Method : Z:\voasrv\HPCHEM1\MSVOA_X\Method\SFAMXML041024WMA.M
 Quant Title : VOC Analysis

TIC Library : C:\Database\NIST20.L
 TIC Integration Parameters: LSCINT.P



Library Search Compound Report

Data Path : Z:\voasrv\HPCHEM1\MSVOA_X\Data\VX041224\
Data File : VX041059.D
Acq On : 13 Apr 2024 02:18
Operator : JC/MD
Sample : P2098-11 100X
Misc : 5.0mL/MSVOA_X/WATER
ALS Vial : 47 Sample Multiplier: 1

Instrument :
MSVOA_X
ClientSampleId :
MCORA6

Quant Method : Z:\voasrv\HPCHEM1\MSVOA_X\Method\SFAMXML041024WMA.M
Quant Title : VOC Analysis

TIC Library : C:\Database\NIST20.L
TIC Integration Parameters: LSCINT.P

No Library Search Compounds Detected

Data Path : Z:\voasrv\HPCHEM1\MSVOA_X\Data\VX041224\
Data File : VX041059.D
Acq On : 13 Apr 2024 02:18
Operator : JC/MD
Sample : P2098-11 100X
Misc : 5.0mL/MSVOA_X/WATER
ALS Vial : 47 Sample Multiplier: 1

Instrument :
MSVOA_X
ClientSampleId :
MCORA6

Quant Method : Z:\voasrv\HPCHEM1\MSVOA_X\Method\SFAMXML041024WMA.M
Quant Title : VOC Analysis

TIC Library : C:\Database\NIST20.L
TIC Integration Parameters: LSCINT.P

TIC Top Hit name	RT	EstConc	Units	Response	--Internal Standard--			
					#	RT	Resp	Conc
