

Data Path : Z:\voasrv\HPCHEM1\MSVOA_X\Data\VX041422\
 Data File : VX028112.D
 Acq On : 14 Apr 2022 17:11
 Operator : JC/MD
 Sample : N2406-01
 Misc : 5.0mL/MSVOA_X/WATER
 ALS Vial : 19 Sample Multiplier: 1

Instrument :
 MSVOA_X
 ClientSampleId :
 220413004-02-VOA

Manual Integrations
 APPROVED

Reviewed By :Krupa Patel 04/15/2022
 Supervised By :Mahesh Dadoda 04/15/2022

Quant Time: Apr 15 03:16:12 2022
 Quant Method : Z:\voasrv\HPCHEM1\MSVOA_X\Method\82X041222W.M
 Quant Title : SW846 8260
 QLast Update : Tue Apr 12 22:07:23 2022
 Response via : Initial Calibration

Compound	R.T.	QIon	Response	Conc	Units	Dev(Min)
Internal Standards						
1) Pentafluorobenzene	5.556	168	221690	50.000	ug/l	0.00
34) 1,4-Difluorobenzene	6.763	114	383111	50.000	ug/l	0.00
63) Chlorobenzene-d5	10.055	117	359474	50.000	ug/l	0.00
72) 1,4-Dichlorobenzene-d4	12.024	152	167709	50.000	ug/l	0.00
System Monitoring Compounds						
33) 1,2-Dichloroethane-d4	5.958	65	141970	47.203	ug/l	0.00
Spiked Amount	50.000	Range 61 - 141	Recovery =	94.400%		
35) Dibromofluoromethane	5.391	113	122951	48.976	ug/l	0.00
Spiked Amount	50.000	Range 69 - 133	Recovery =	97.960%		
50) Toluene-d8	8.653	98	458542	48.975	ug/l	0.00
Spiked Amount	50.000	Range 65 - 126	Recovery =	97.960%		
62) 4-Bromofluorobenzene	11.085	95	152075	43.502	ug/l	0.00
Spiked Amount	50.000	Range 58 - 135	Recovery =	87.000%		
Target Compounds						
						Qvalue
6) Chloroethane	1.691	64	1750	3.307	ug/l	96
8) Diethyl Ether	2.136	74	20657	9.597	ug/l	92
11) Tert butyl alcohol	2.959	59	125154	179.268	ug/l	99
16) Acetone	2.380	43	9878m	7.883	ug/l	
24) 1,1-Dichloroethane	3.611	63	1427	0.317	ug/l #	81
29) Tetrahydrofuran	5.001	42	198023	139.874	ug/l	91
40) Benzene	6.044	78	12222	1.097	ug/l	98
49) 1,4-Dioxane	7.659	88	9790	129.189	ug/l	97
52) Toluene	8.720	92	2829	0.381	ug/l	97
65) Chlorobenzene	10.079	112	57375	7.315	ug/l	100
67) Ethyl Benzene	10.195	91	4874	0.353	ug/l	100
68) m/p-Xylenes	10.305	106	16369	2.838	ug/l	97
69) o-Xylene	10.646	106	11803	2.105	ug/l	100
73) Isopropylbenzene	10.963	105	7334	0.616	ug/l	99
79) 2-Chlorotoluene	11.372	91	4284	0.510	ug/l	88
80) 1,3,5-Trimethylbenzene	11.457	105	3381	0.329	ug/l	91
84) 1,2,4-Trimethylbenzene	11.750	105	17183	1.705	ug/l	100
86) p-Isopropyltoluene	12.012	119	3493m	0.324	ug/l	
88) 1,4-Dichlorobenzene	12.043	146	37311	6.272	ug/l	95
91) 1,2-Dichlorobenzene	12.335	146	2738	0.483	ug/l	91
95) Naphthalene	13.780	128	45566	4.117	ug/l	99

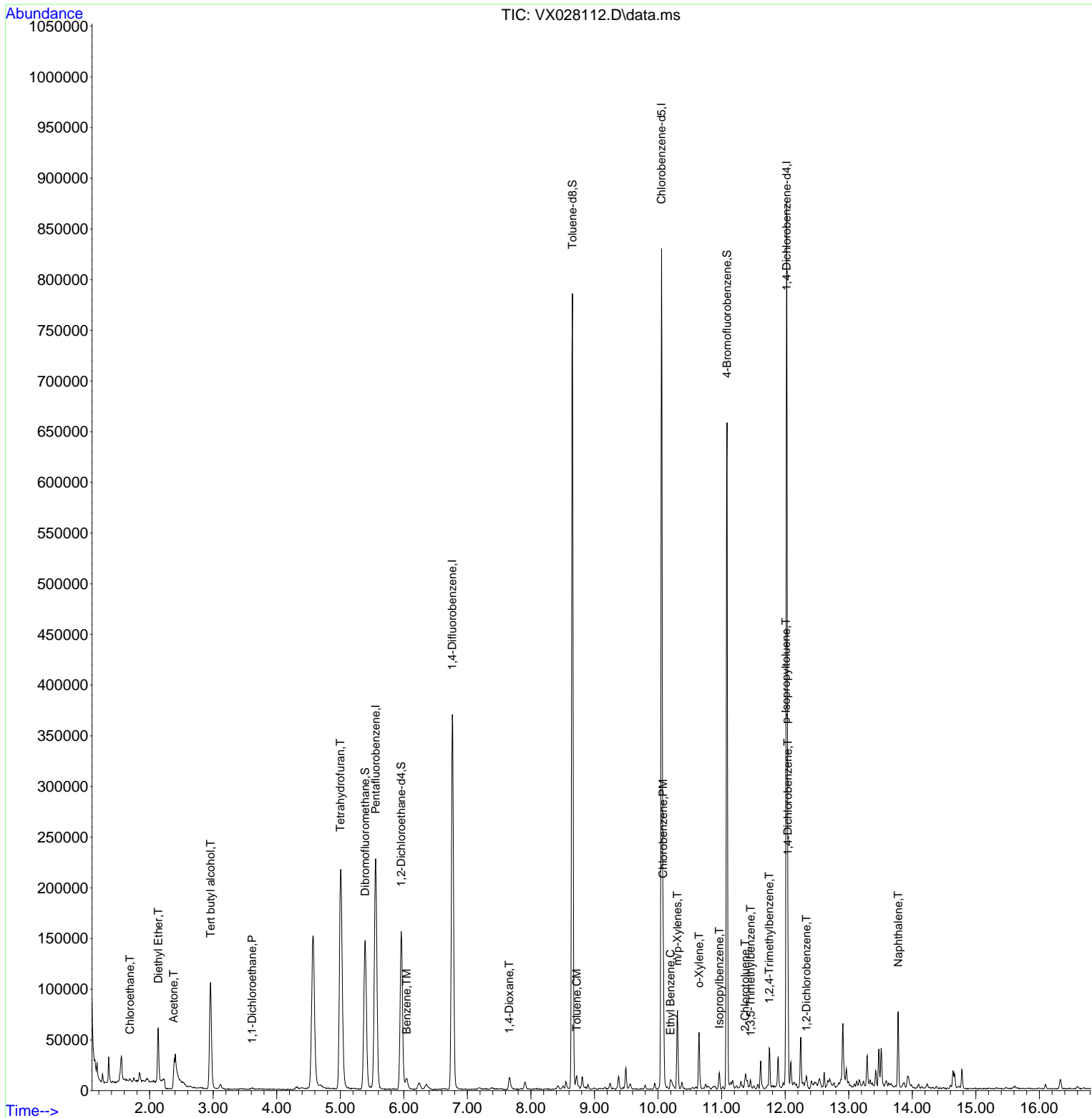
(#) = qualifier out of range (m) = manual integration (+) = signals summed

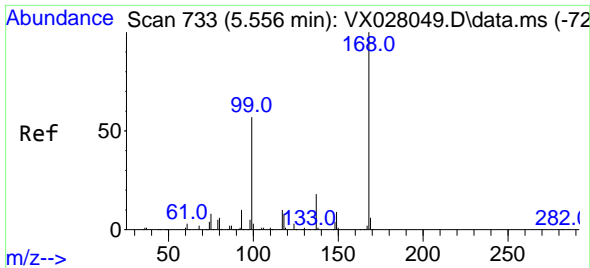
Data Path : Z:\voasrv\HPCHEM1\MSVOA_X\Data\VX041422\
 Data File : VX028112.D
 Acq On : 14 Apr 2022 17:11
 Operator : JC/MD
 Sample : N2406-01
 Misc : 5.0mL/MSVOA_X/WATER
 ALS Vial : 19 Sample Multiplier: 1

Instrument :
 MSVOA_X
ClientSampleId :
 220413004-02-VOA

Manual Integrations
APPROVED
 Reviewed By :Krupa Patel 04/15/2022
 Supervised By :Mahesh Dadoda 04/15/2022

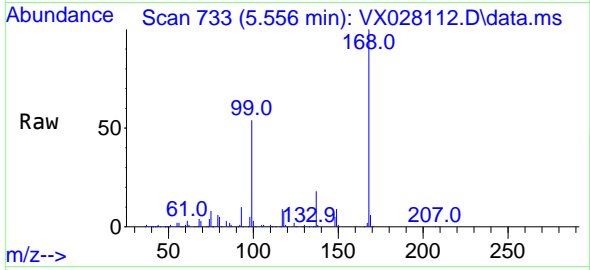
Quant Time: Apr 15 03:16:12 2022
 Quant Method : Z:\voasrv\HPCHEM1\MSVOA_X\Method\82X041222W.M
 Quant Title : SW846 8260
 QLast Update : Tue Apr 12 22:07:23 2022
 Response via : Initial Calibration





#1
 Pentafluorobenzene
 Concen: 50.000 ug/l
 RT: 5.556 min Scan# 71
 Delta R.T. -0.000 min
 Lab File: VX028112.D
 Acq: 14 Apr 2022 17:11

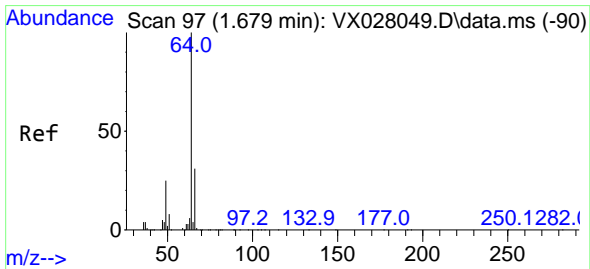
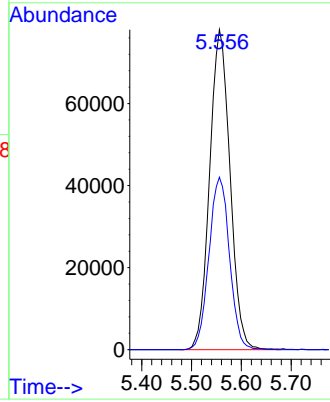
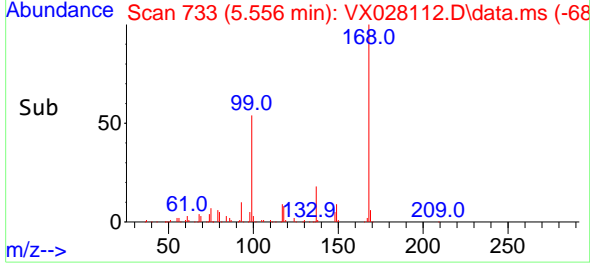
Instrument : MSVOA_X
 Client Sample Id : 220413004-02-VOA



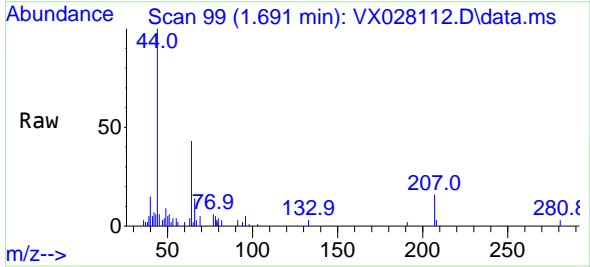
Tgt Ion: 168 Resp: 221690
 Ion Ratio Lower Upper
 168 100
 99 53.9 41.7 62.5

Manual Integrations
APPROVED

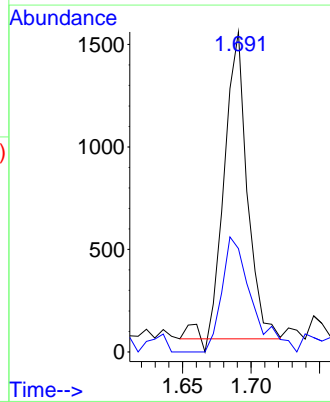
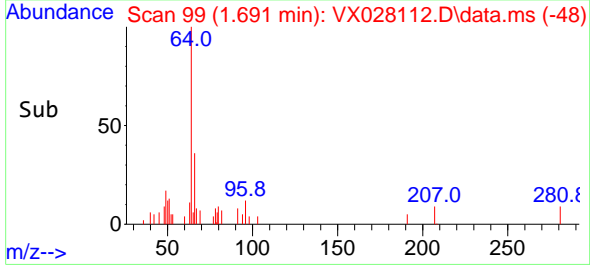
Reviewed By :Krupa Patel 04/15/2022
 Supervised By :Mahesh Dadoda 04/15/2022

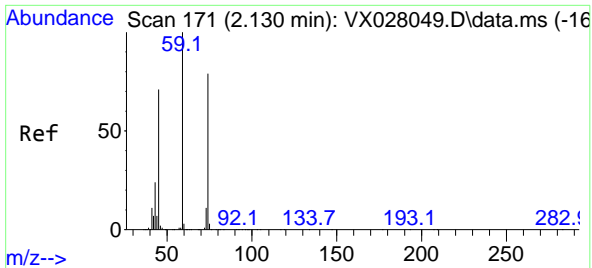


#6
 Chloroethane
 Concen: 3.307 ug/l
 RT: 1.691 min Scan# 99
 Delta R.T. 0.012 min
 Lab File: VX028112.D
 Acq: 14 Apr 2022 17:11



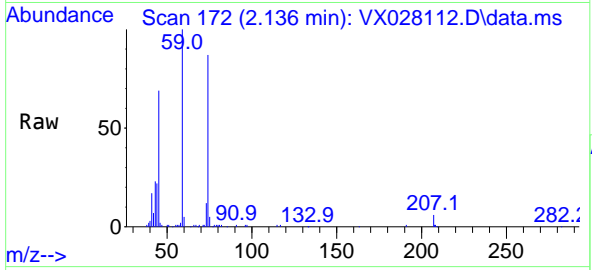
Tgt Ion: 64 Resp: 1750
 Ion Ratio Lower Upper
 64 100
 66 33.7 25.3 37.9





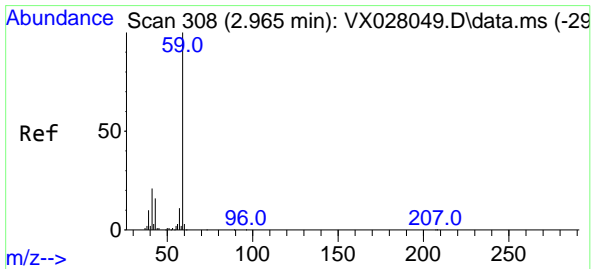
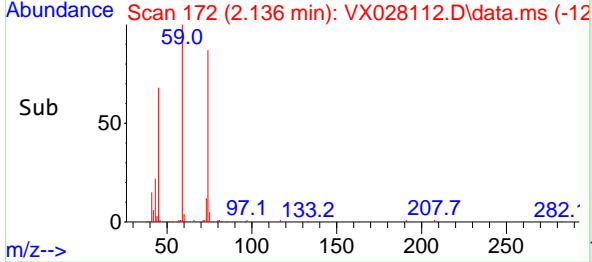
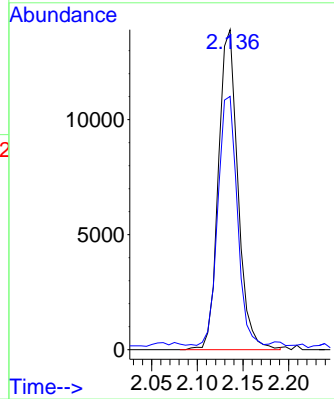
#8
 Diethyl Ether
 Concen: 9.597 ug/l
 RT: 2.136 min Scan# 11
 Delta R.T. 0.006 min
 Lab File: VX028112.D
 Acq: 14 Apr 2022 17:11

Instrument : MSVOA_X
 ClientSampleId : 220413004-02-VOA

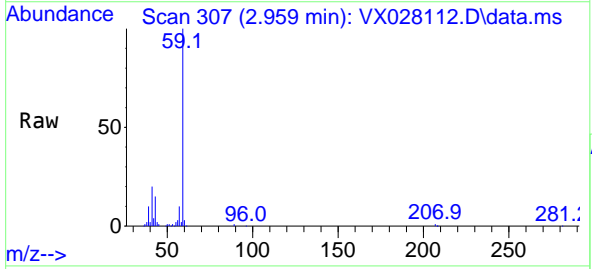


Tgt Ion: 74 Resp: 2065
 Ion Ratio Lower Upper
 74 100
 45 76.9 42.0 126.0

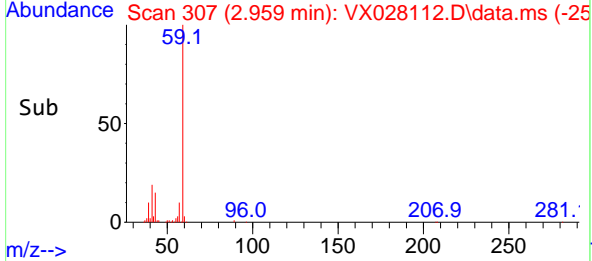
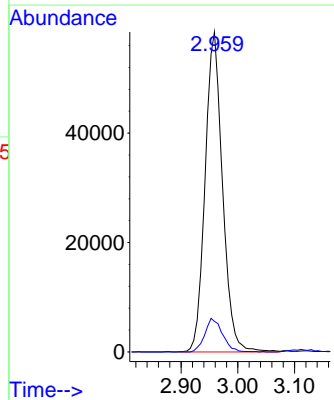
Manual Integrations
APPROVED
 Reviewed By :Krupa Patel 04/15/2022
 Supervised By :Mahesh Dadoda 04/15/2022

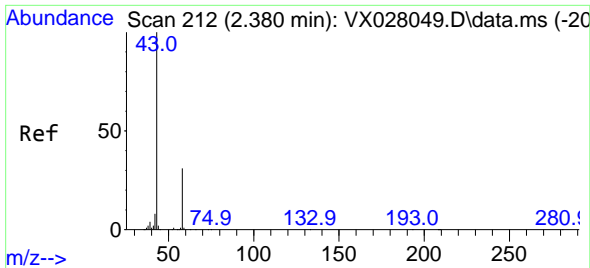


#11
 Tert butyl alcohol
 Concen: 179.268 ug/l
 RT: 2.959 min Scan# 307
 Delta R.T. -0.006 min
 Lab File: VX028112.D
 Acq: 14 Apr 2022 17:11



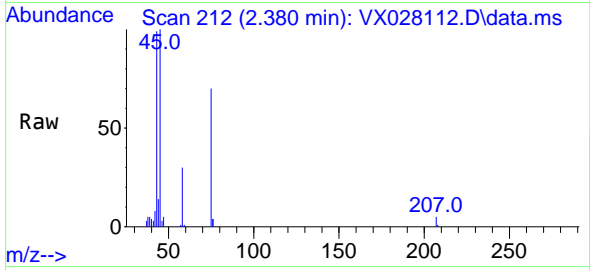
Tgt Ion: 59 Resp: 125154
 Ion Ratio Lower Upper
 59 100
 57 10.6 8.3 12.5





#16
 Acetone
 Concen: 7.883 ug/l m
 RT: 2.380 min Scan# 212
 Delta R.T. -0.000 min
 Lab File: VX028112.D
 Acq: 14 Apr 2022 17:11

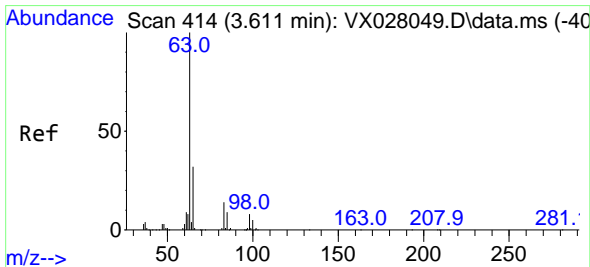
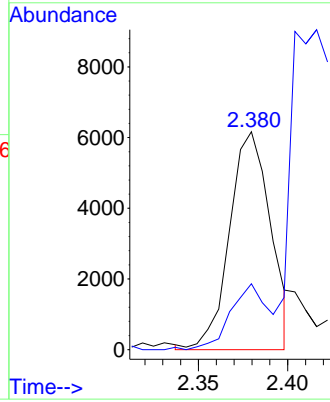
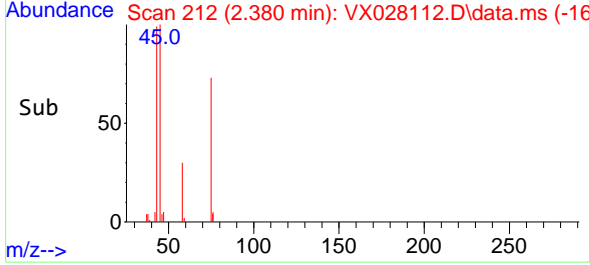
Instrument : MSVOA_X
 ClientSampleId : 220413004-02-VOA



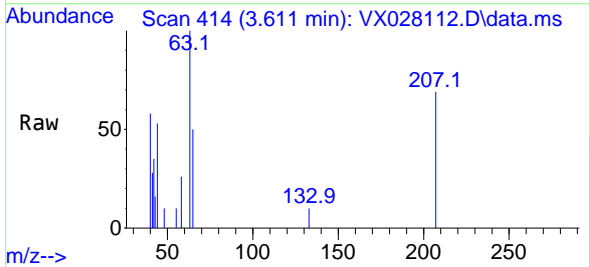
Tgt Ion: 43 Resp: 9878
 Ion Ratio Lower Upper
 43 100
 58 30.3 28.8 43.2

Manual Integrations
APPROVED

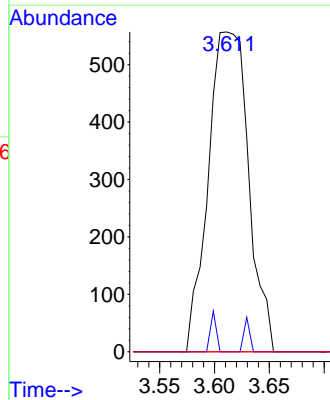
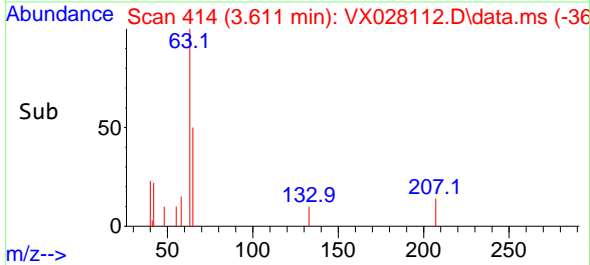
Reviewed By :Krupa Patel 04/15/2022
 Supervised By :Mahesh Dadoda 04/15/2022

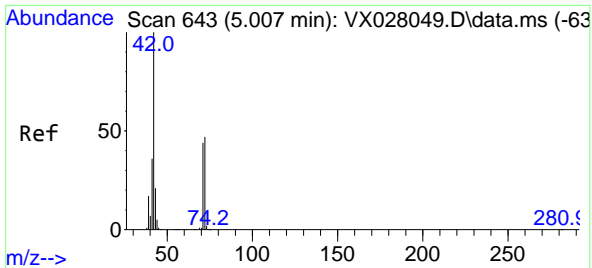


#24
 1,1-Dichloroethane
 Concen: 0.317 ug/l
 RT: 3.611 min Scan# 414
 Delta R.T. 0.000 min
 Lab File: VX028112.D
 Acq: 14 Apr 2022 17:11



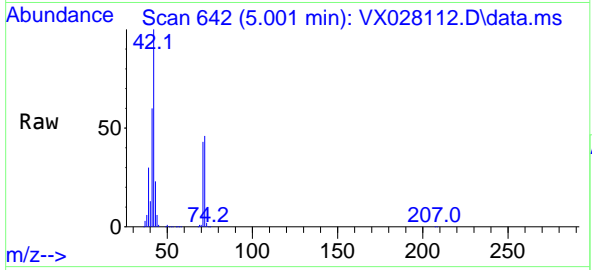
Tgt Ion: 63 Resp: 1427
 Ion Ratio Lower Upper
 63 100
 98 0.0 3.9 11.7#
 100 0.0 2.4 7.2#





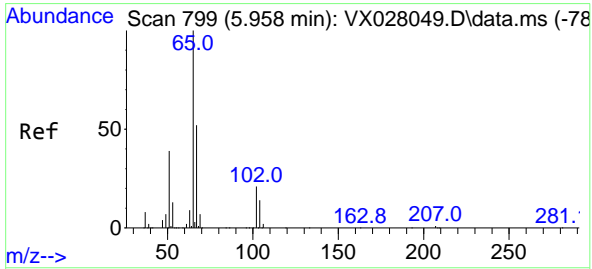
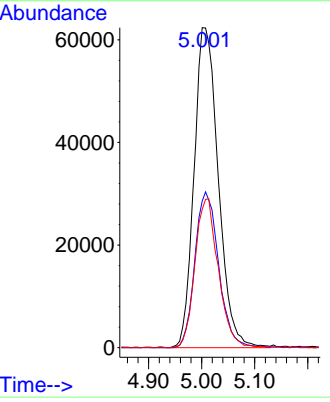
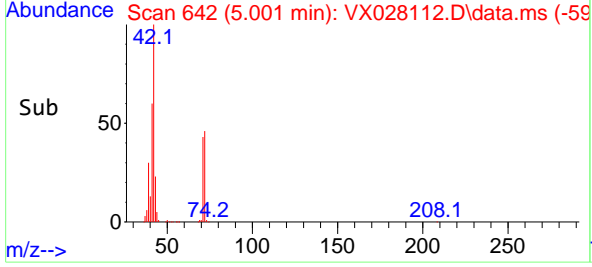
#29
 Tetrahydrofuran
 Concen: 139.874 ug/l
 RT: 5.001 min Scan# 643
 Delta R.T. -0.006 min
 Lab File: VX028112.D
 Acq: 14 Apr 2022 17:11

Instrument : MSVOA_X
 ClientSampleId : 220413004-02-VOA

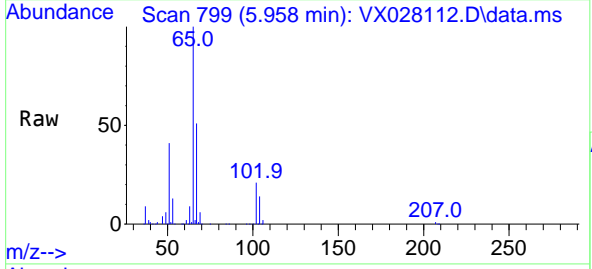


Tgt Ion: 42 Resp: 19802
 Ion Ratio Lower Upper
 42 100
 72 47.9 44.1 66.1
 71 44.9 40.5 60.7

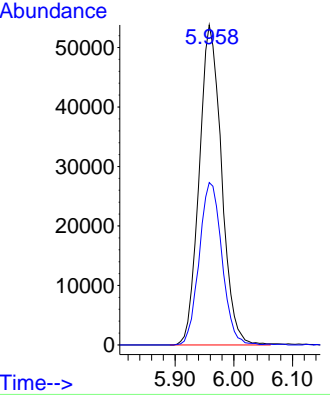
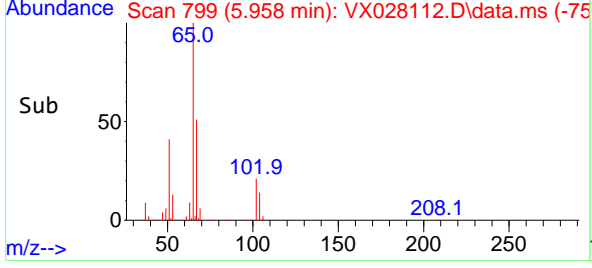
Manual Integrations
APPROVED
 Reviewed By :Krupa Patel 04/15/2022
 Supervised By :Mahesh Dadoda 04/15/2022

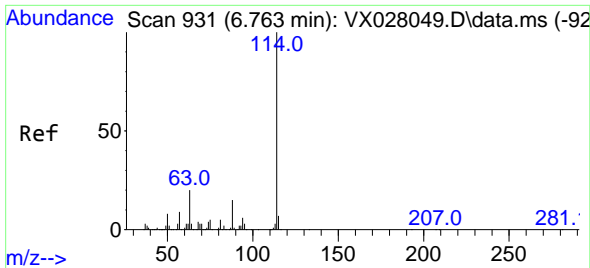


#33
 1,2-Dichloroethane-d4
 Concen: 47.203 ug/l
 RT: 5.958 min Scan# 799
 Delta R.T. 0.000 min
 Lab File: VX028112.D
 Acq: 14 Apr 2022 17:11



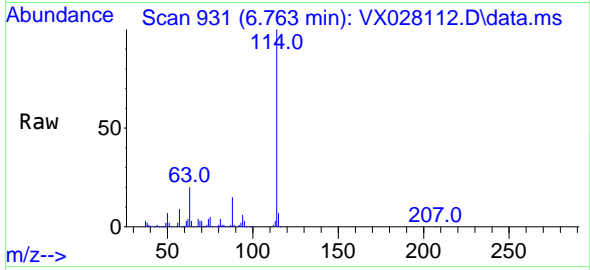
Tgt Ion: 65 Resp: 141970
 Ion Ratio Lower Upper
 65 100
 67 51.7 0.0 107.4





#34
 1,4-Difluorobenzene
 Concen: 50.000 ug/l
 RT: 6.763 min Scan# 911
 Delta R.T. -0.000 min
 Lab File: VX028112.D
 Acq: 14 Apr 2022 17:11

Instrument : MSVOA_X
 Client Sample Id : 220413004-02-VOA

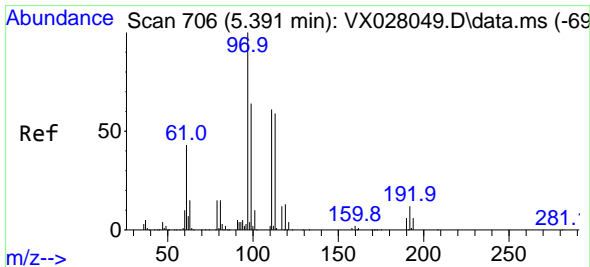
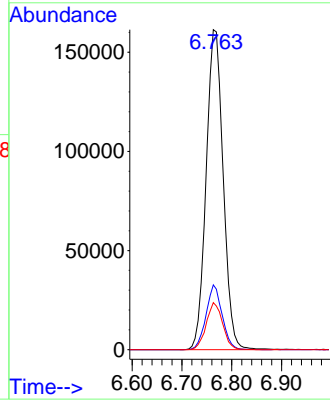
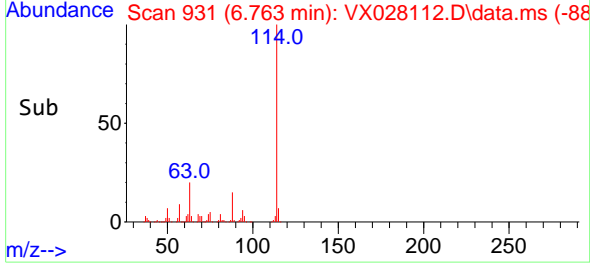


Tgt Ion: 114 Resp: 38311

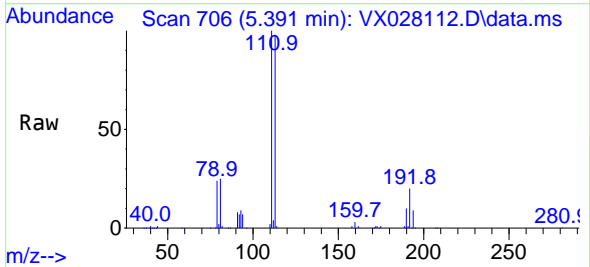
Ion	Ratio	Lower	Upper
114	100		
63	20.3	0.0	36.8
88	14.7	0.0	32.4

Manual Integrations
 APPROVED

Reviewed By :Krupa Patel 04/15/2022
 Supervised By :Mahesh Dadoda 04/15/2022

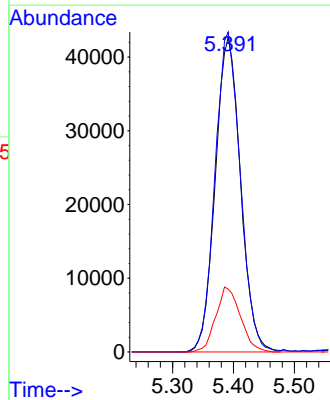
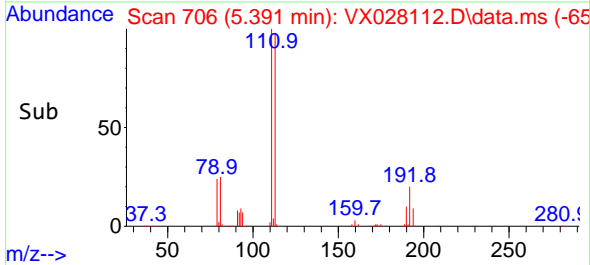


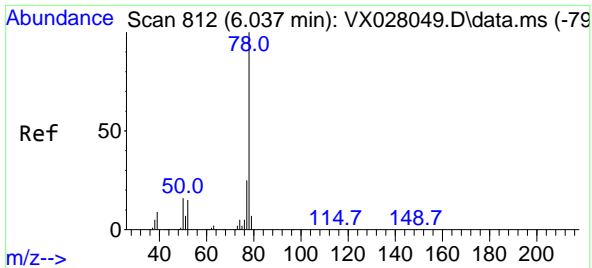
#35
 Dibromofluoromethane
 Concen: 48.976 ug/l
 RT: 5.391 min Scan# 706
 Delta R.T. 0.000 min
 Lab File: VX028112.D
 Acq: 14 Apr 2022 17:11



Tgt Ion: 113 Resp: 122951

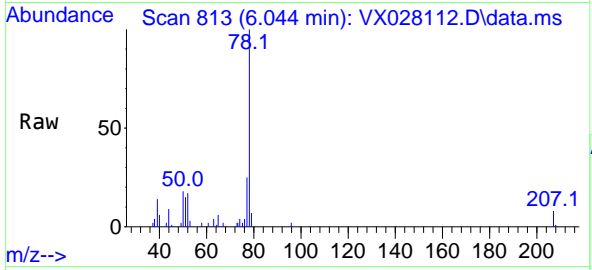
Ion	Ratio	Lower	Upper
113	100		
111	101.6	82.8	124.2
192	20.1	16.9	25.3





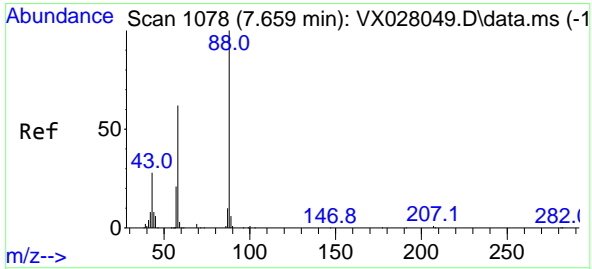
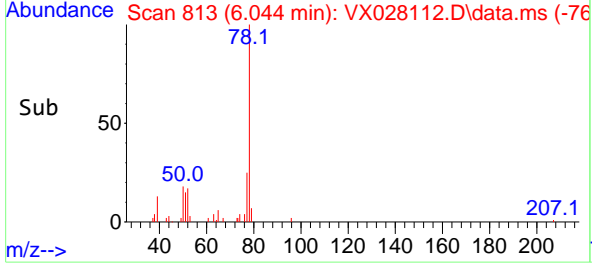
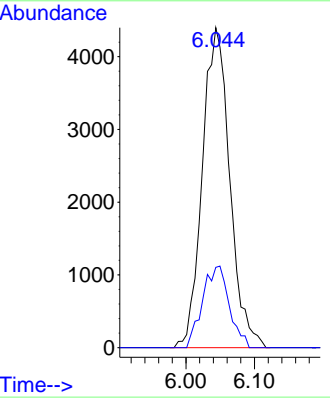
#40
Benzene
Concen: 1.097 ug/l
RT: 6.044 min Scan# 812
Delta R.T. 0.007 min
Lab File: VX028112.D
Acq: 14 Apr 2022 17:11

Instrument : MSVOA_X
Client Sample Id : 220413004-02-VOA

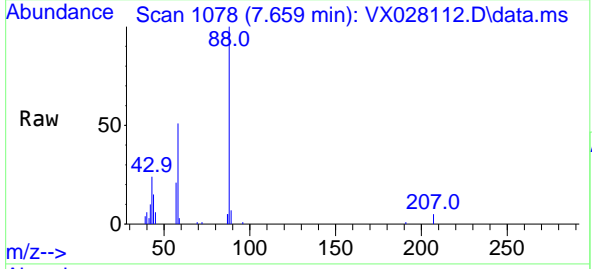


Tgt Ion: 78 Resp: 1222
Ion Ratio Lower Upper
78 100
77 25.1 19.3 28.9

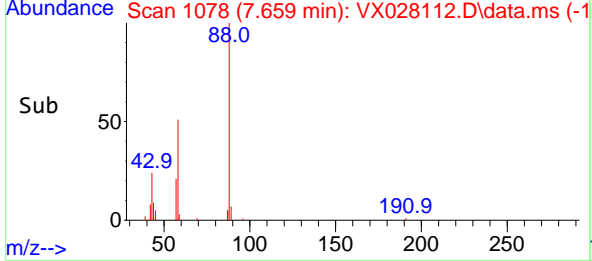
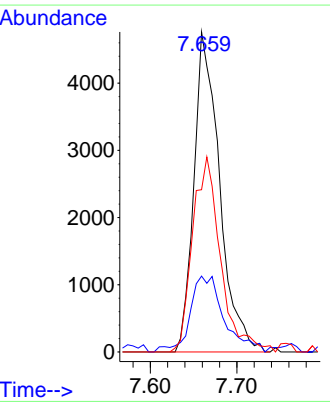
Manual Integrations
APPROVED
Reviewed By :Krupa Patel 04/15/2022
Supervised By :Mahesh Dadoda 04/15/2022

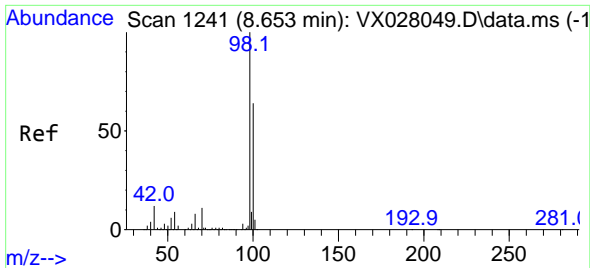


#49
1,4-Dioxane
Concen: 129.189 ug/l
RT: 7.659 min Scan# 1078
Delta R.T. 0.000 min
Lab File: VX028112.D
Acq: 14 Apr 2022 17:11



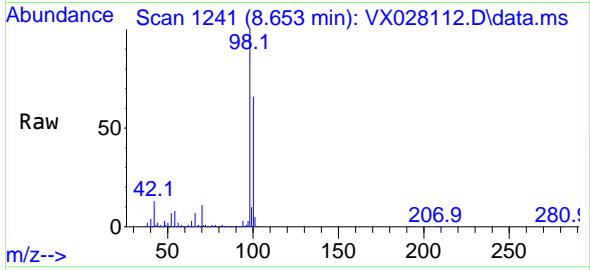
Tgt Ion: 88 Resp: 9790
Ion Ratio Lower Upper
88 100
43 31.2 21.9 32.9
58 66.4 53.7 80.5





#50
 Toluene-d8
 Concen: 48.975 ug/l
 RT: 8.653 min Scan# 1241
 Delta R.T. -0.000 min
 Lab File: VX028112.D
 Acq: 14 Apr 2022 17:11

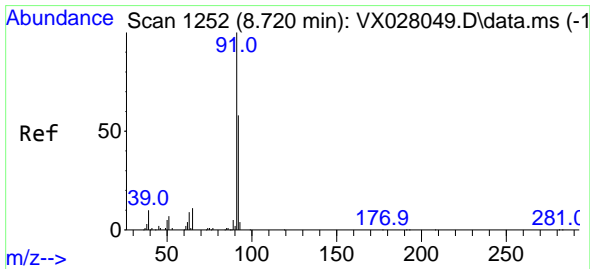
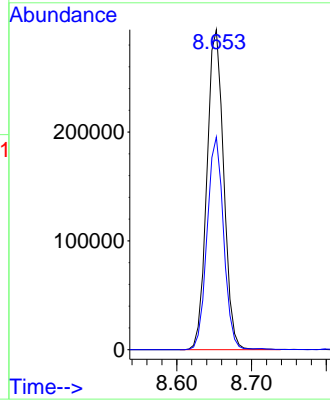
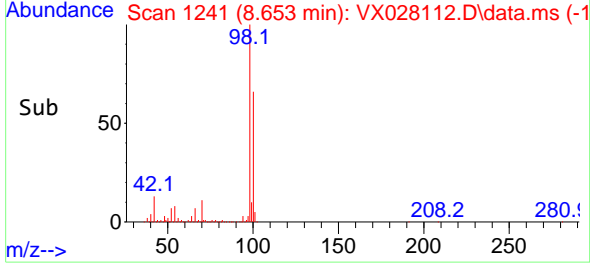
Instrument : MSVOA_X
 ClientSampleId : 220413004-02-VOA



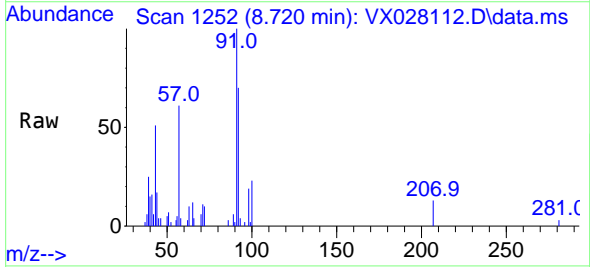
Tgt Ion: 98 Resp: 45854
 Ion Ratio Lower Upper
 98 100
 100 65.2 52.6 78.8

Manual Integrations
APPROVED

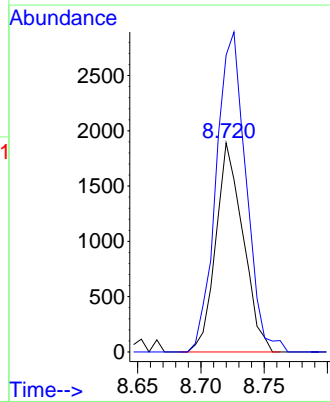
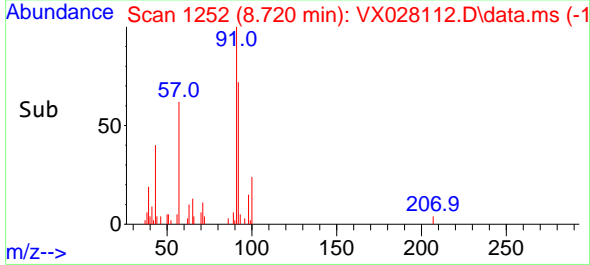
Reviewed By :Krupa Patel 04/15/2022
 Supervised By :Mahesh Dadoda 04/15/2022

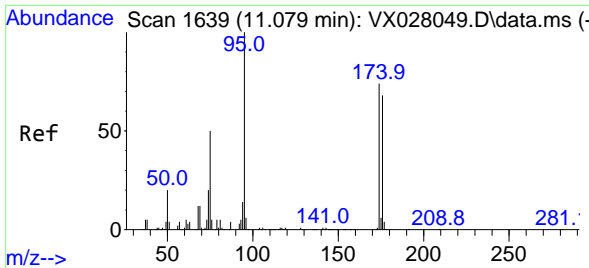


#52
 Toluene
 Concen: 0.381 ug/l
 RT: 8.720 min Scan# 1252
 Delta R.T. -0.000 min
 Lab File: VX028112.D
 Acq: 14 Apr 2022 17:11



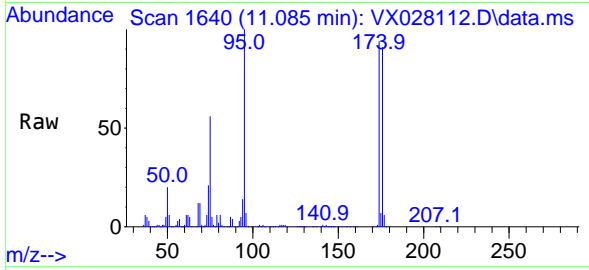
Tgt Ion: 92 Resp: 2829
 Ion Ratio Lower Upper
 92 100
 91 167.6 137.5 206.3





#62
 4-Bromofluorobenzene
 Concen: 43.502 ug/l
 RT: 11.085 min Scan# 1640
 Delta R.T. 0.006 min
 Lab File: VX028112.D
 Acq: 14 Apr 2022 17:11

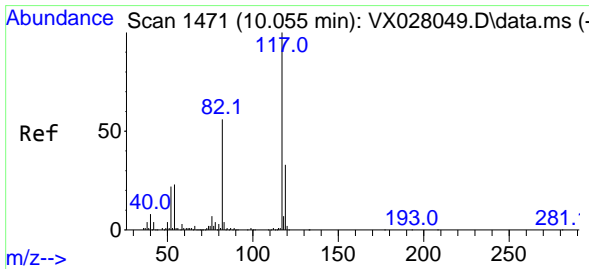
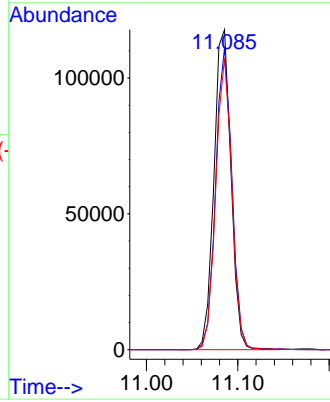
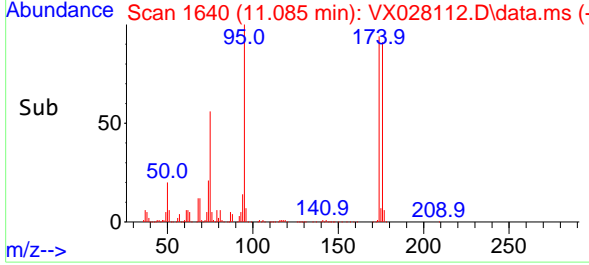
Instrument : MSVOA_X
 ClientSampleId : 220413004-02-VOA



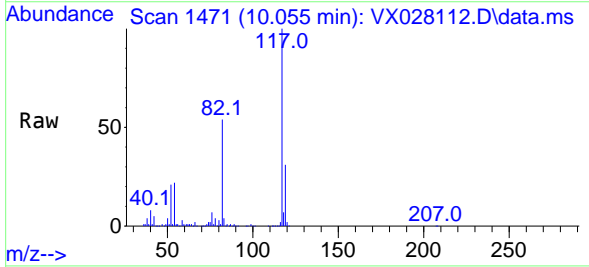
Tgt Ion: 95 Resp: 152074
 Ion Ratio Lower Upper
 95 100
 174 90.5 0.0 163.0
 176 86.8 0.0 155.0

Manual Integrations
 APPROVED

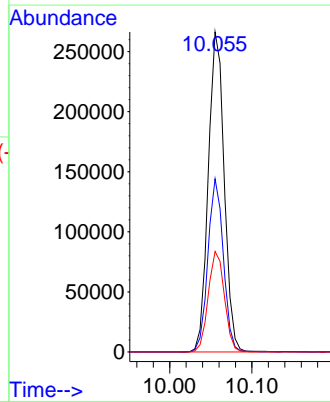
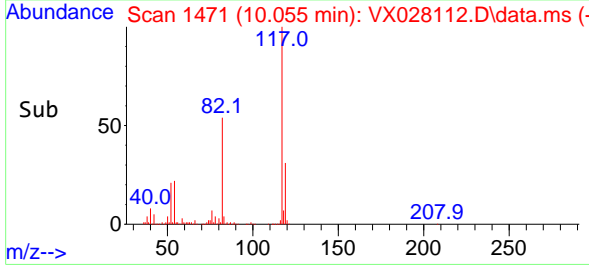
Reviewed By :Krupa Patel 04/15/2022
 Supervised By :Mahesh Dadoda 04/15/2022

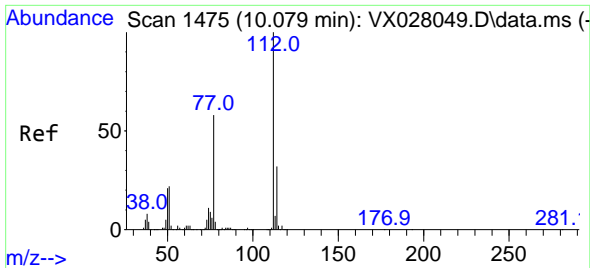


#63
 Chlorobenzene-d5
 Concen: 50.000 ug/l
 RT: 10.055 min Scan# 1471
 Delta R.T. 0.000 min
 Lab File: VX028112.D
 Acq: 14 Apr 2022 17:11



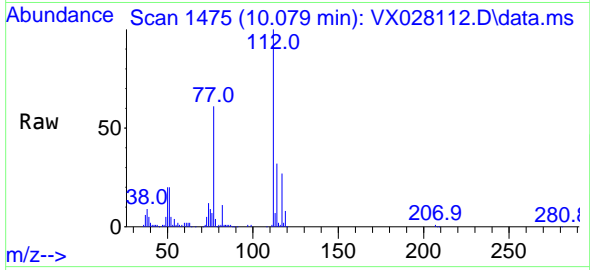
Tgt Ion:117 Resp: 359474
 Ion Ratio Lower Upper
 117 100
 82 54.1 41.8 62.8
 119 31.4 24.8 37.2





#65
 Chlorobenzene
 Concen: 7.315 ug/l
 RT: 10.079 min Scan# 1475
 Delta R.T. 0.000 min
 Lab File: VX028112.D
 Acq: 14 Apr 2022 17:11

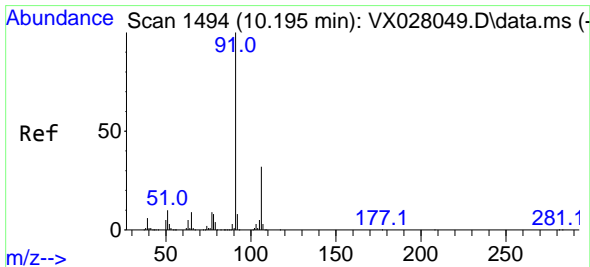
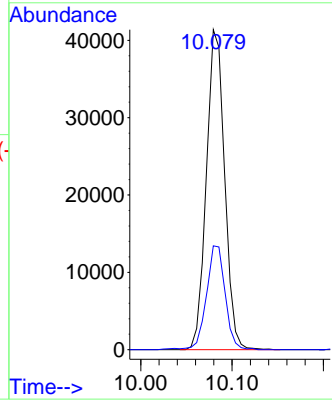
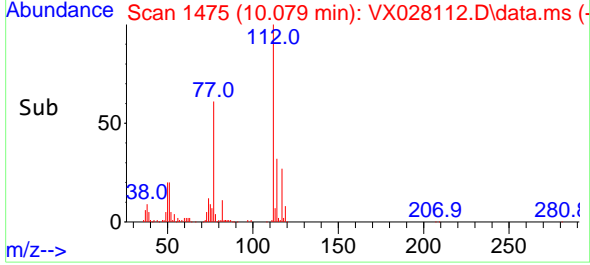
Instrument : MSVOA_X
 ClientSampleId : 220413004-02-VOA



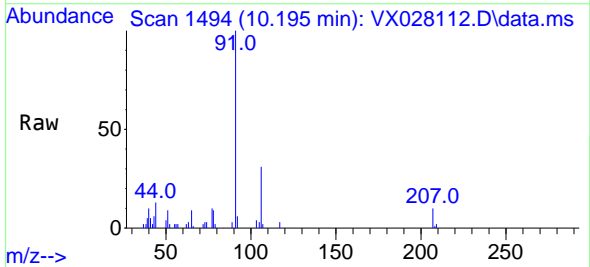
Tgt Ion:112 Resp: 5737
 Ion Ratio Lower Upper
 112 100
 114 32.4 25.8 38.8

Manual Integrations
APPROVED

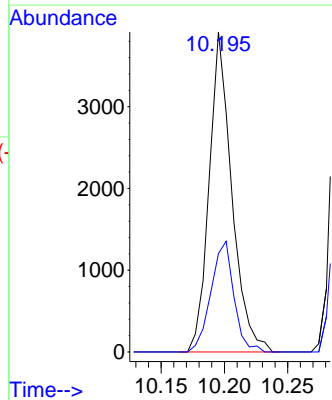
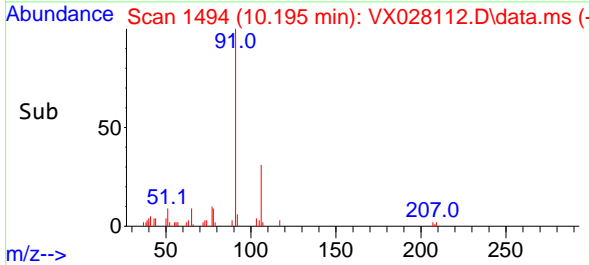
Reviewed By :Krupa Patel 04/15/2022
 Supervised By :Mahesh Dadoda 04/15/2022

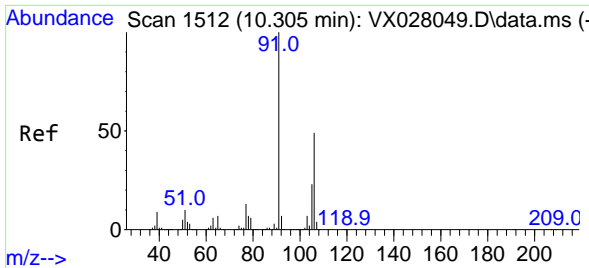


#67
 Ethyl Benzene
 Concen: 0.353 ug/l
 RT: 10.195 min Scan# 1494
 Delta R.T. 0.000 min
 Lab File: VX028112.D
 Acq: 14 Apr 2022 17:11



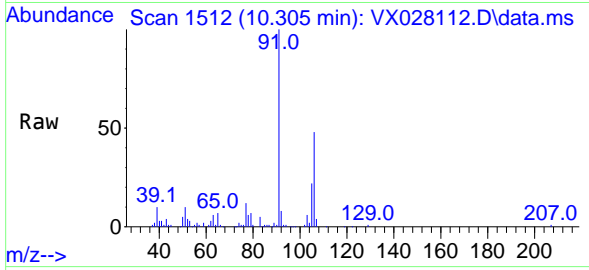
Tgt Ion: 91 Resp: 4874
 Ion Ratio Lower Upper
 91 100
 106 30.8 24.6 36.8





#68
 m/p-Xylenes
 Concen: 2.838 ug/l
 RT: 10.305 min Scan# 1512
 Delta R.T. 0.000 min
 Lab File: VX028112.D
 Acq: 14 Apr 2022 17:11

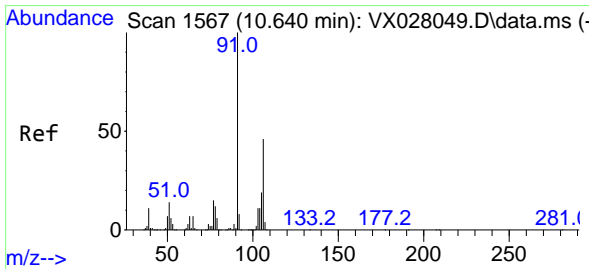
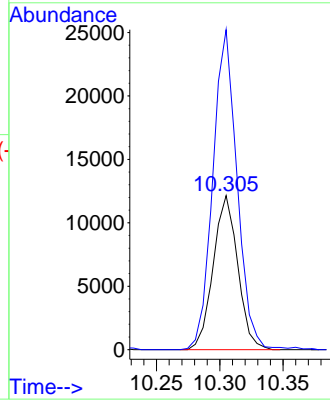
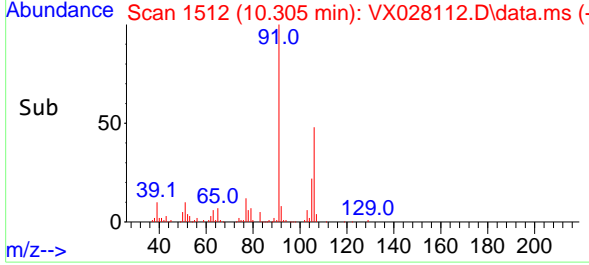
Instrument : MSVOA_X
 ClientSampleId : 220413004-02-VOA



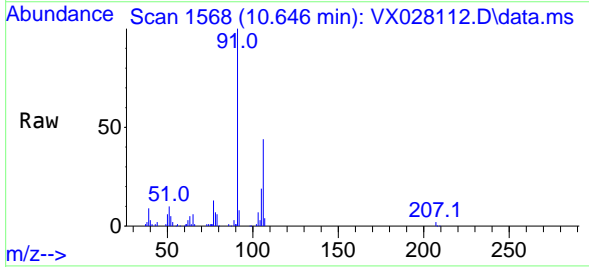
Tgt Ion:106 Resp: 16369
 Ion Ratio Lower Upper
 106 100
 91 205.8 160.4 240.6

Manual Integrations
APPROVED

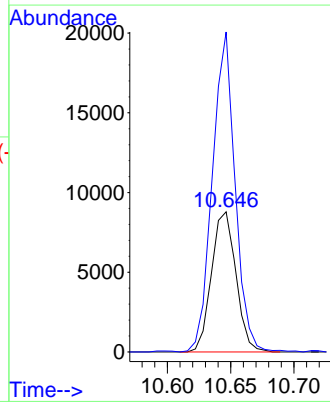
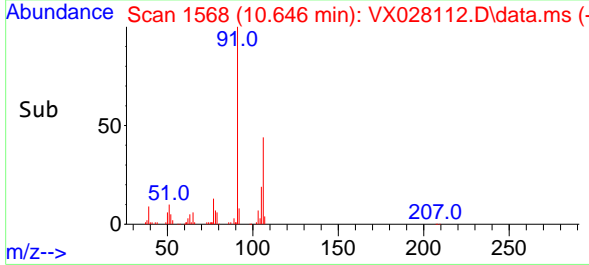
Reviewed By :Krupa Patel 04/15/2022
 Supervised By :Mahesh Dadoda 04/15/2022

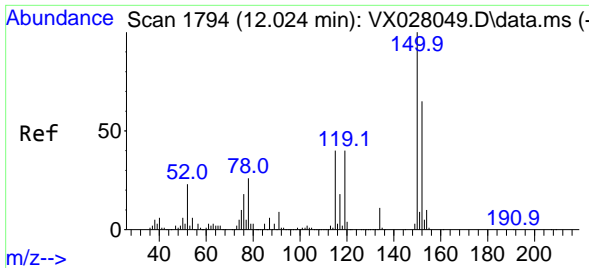


#69
 o-Xylene
 Concen: 2.105 ug/l
 RT: 10.646 min Scan# 1568
 Delta R.T. 0.006 min
 Lab File: VX028112.D
 Acq: 14 Apr 2022 17:11



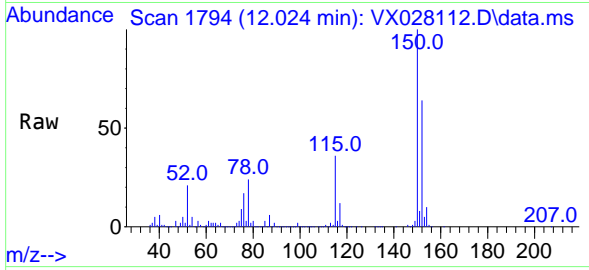
Tgt Ion:106 Resp: 11803
 Ion Ratio Lower Upper
 106 100
 91 212.4 106.1 318.1





#72
 1,4-Dichlorobenzene-d4
 Concen: 50.000 ug/l
 RT: 12.024 min Scan# 1794
 Delta R.T. 0.000 min
 Lab File: VX028112.D
 Acq: 14 Apr 2022 17:11

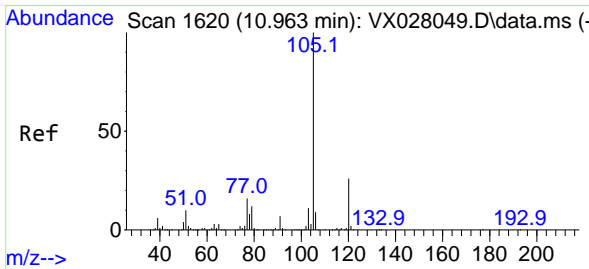
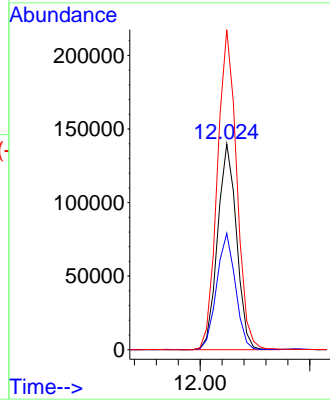
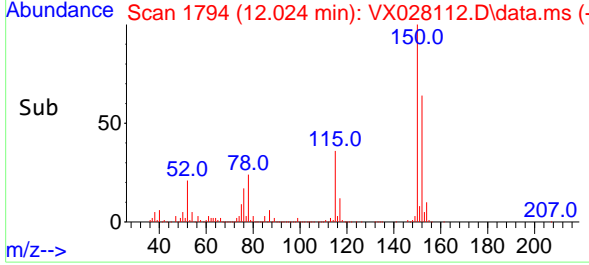
Instrument : MSVOA_X
 ClientSampleId : 220413004-02-VOA



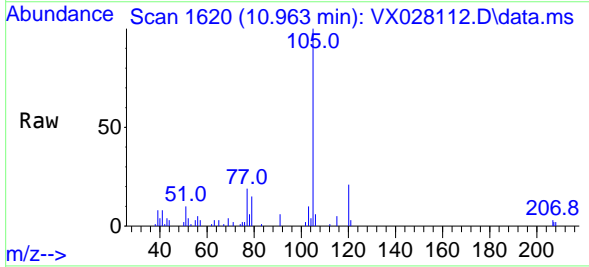
Tgt Ion:152 Resp: 167709
 Ion Ratio Lower Upper
 152 100
 115 56.2 37.5 112.7
 150 159.3 0.0 338.2

Manual Integrations
 APPROVED

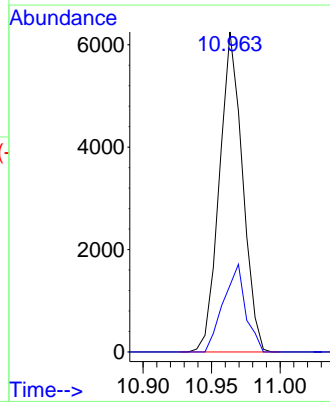
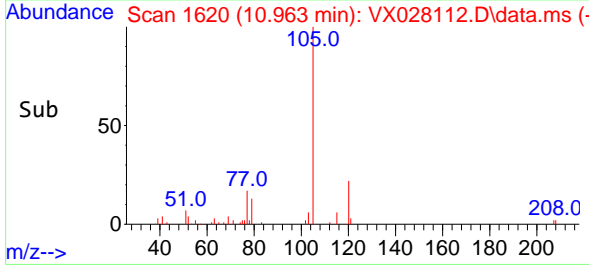
Reviewed By :Krupa Patel 04/15/2022
 Supervised By :Mahesh Dadoda 04/15/2022

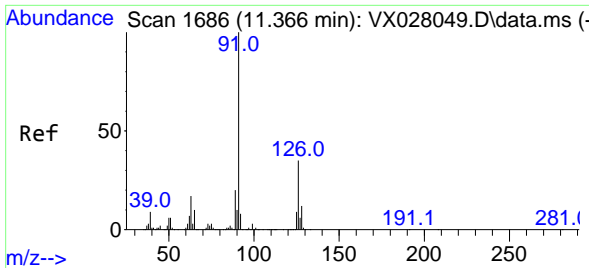


#73
 Isopropylbenzene
 Concen: 0.616 ug/l
 RT: 10.963 min Scan# 1620
 Delta R.T. 0.000 min
 Lab File: VX028112.D
 Acq: 14 Apr 2022 17:11



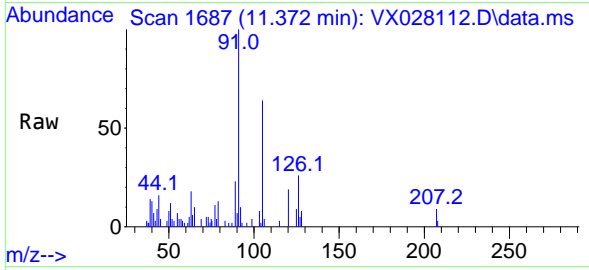
Tgt Ion:105 Resp: 7334
 Ion Ratio Lower Upper
 105 100
 120 26.3 13.5 40.5





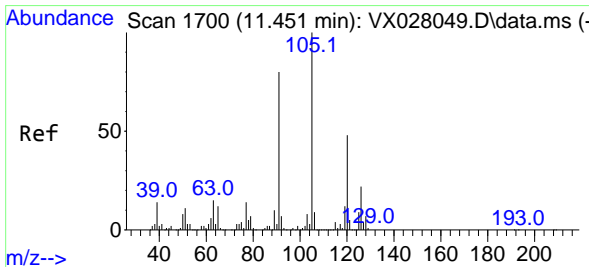
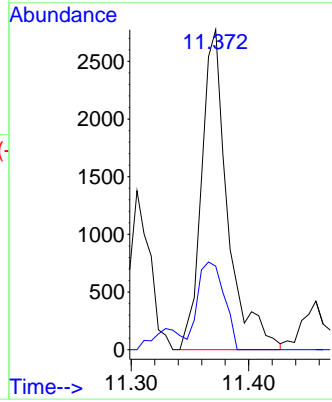
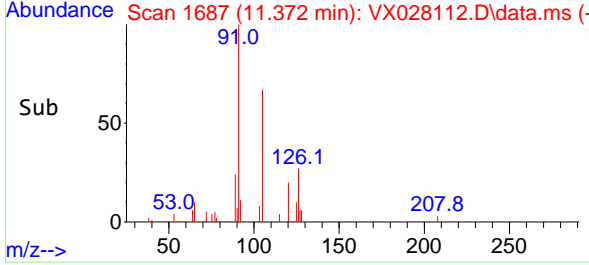
#79
 2-Chlorotoluene
 Concen: 0.510 ug/l
 RT: 11.372 min Scan# 10
 Delta R.T. 0.006 min
 Lab File: VX028112.D
 Acq: 14 Apr 2022 17:11

Instrument : MSVOA_X
 Client Sample Id : 220413004-02-VOA

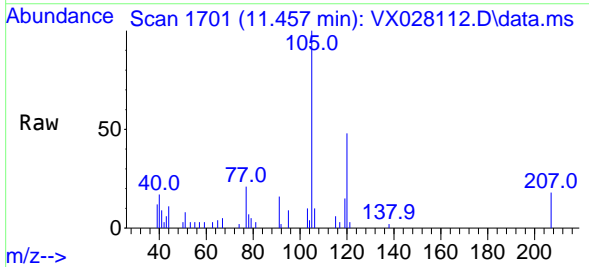


Tgt Ion: 91 Resp: 4284
 Ion Ratio Lower Upper
 91 100
 126 27.7 17.3 51.9

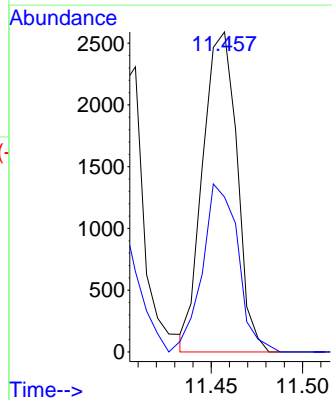
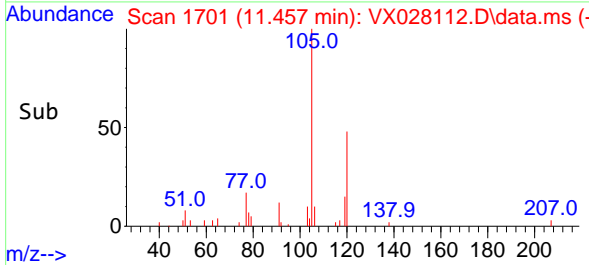
Manual Integrations
APPROVED
 Reviewed By :Krupa Patel 04/15/2022
 Supervised By :Mahesh Dadoda 04/15/2022

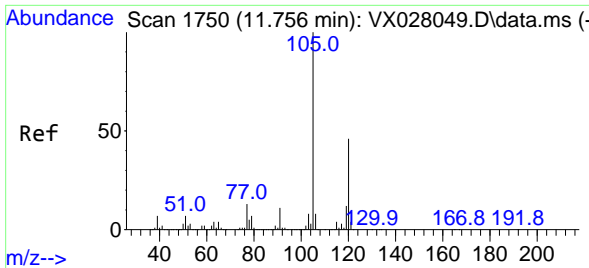


#80
 1,3,5-Trimethylbenzene
 Concen: 0.329 ug/l
 RT: 11.457 min Scan# 1701
 Delta R.T. 0.006 min
 Lab File: VX028112.D
 Acq: 14 Apr 2022 17:11



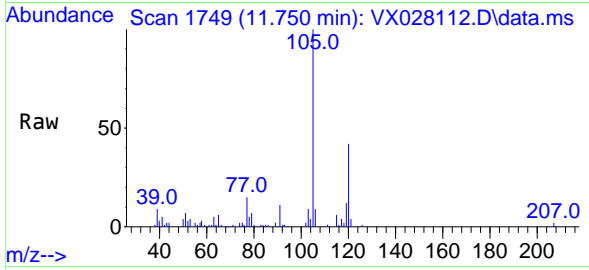
Tgt Ion:105 Resp: 3381
 Ion Ratio Lower Upper
 105 100
 120 54.6 24.3 72.9





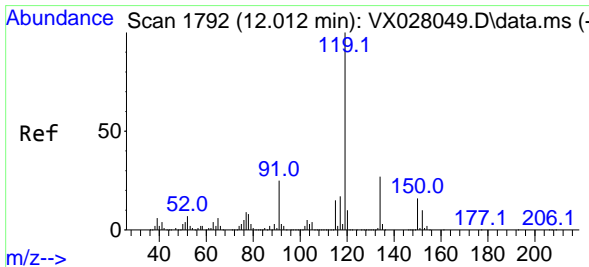
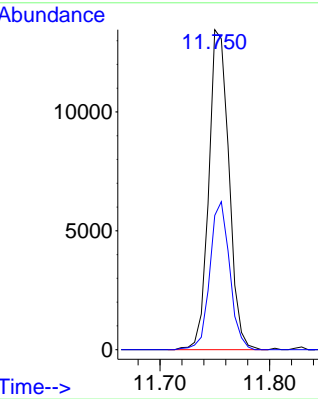
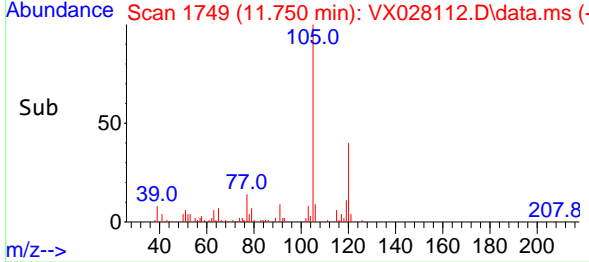
#84
 1,2,4-Trimethylbenzene
 Concen: 1.705 ug/l
 RT: 11.750 min Scan# 1718
 Delta R.T. -0.006 min
 Lab File: VX028112.D
 Acq: 14 Apr 2022 17:11

Instrument : MSVOA_X
 ClientSampleId : 220413004-02-VOA

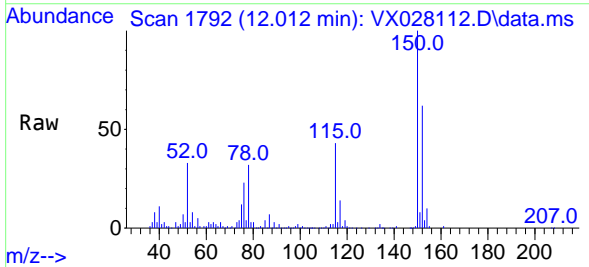


Tgt Ion:105 Resp: 1718
 Ion Ratio Lower Upper
 105 100
 120 45.5 22.6 67.8

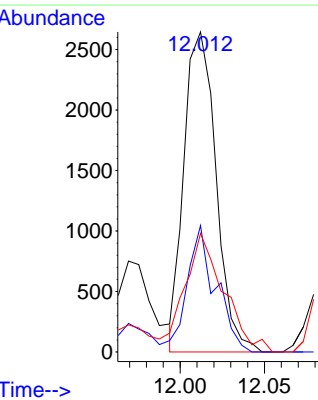
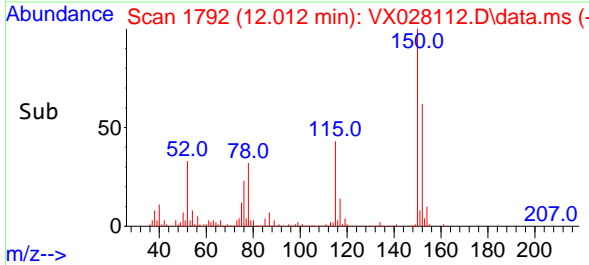
Manual Integrations
APPROVED
 Reviewed By :Krupa Patel 04/15/2022
 Supervised By :Mahesh Dadoda 04/15/2022

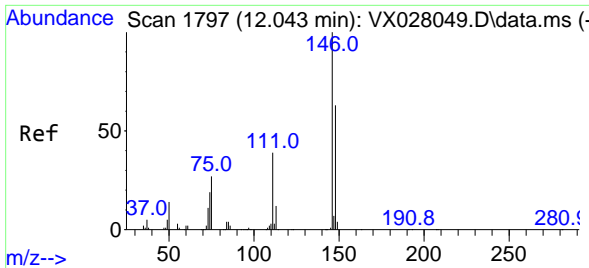


#86
 p-Isopropyltoluene
 Concen: 0.324 ug/l m
 RT: 12.012 min Scan# 1792
 Delta R.T. 0.000 min
 Lab File: VX028112.D
 Acq: 14 Apr 2022 17:11



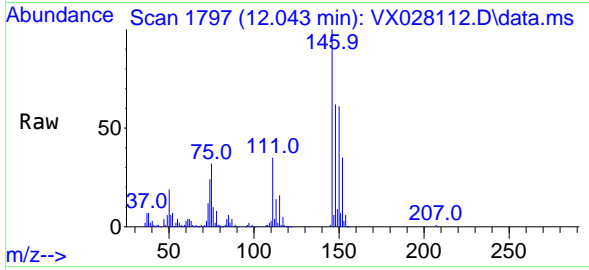
Tgt Ion:119 Resp: 3493
 Ion Ratio Lower Upper
 119 100
 134 8.1 13.0 39.0#
 91 9.6 11.3 33.9#





#88
 1,4-Dichlorobenzene
 Concen: 6.272 ug/l
 RT: 12.043 min Scan# 1111
 Delta R.T. -0.000 min
 Lab File: VX028112.D
 Acq: 14 Apr 2022 17:11

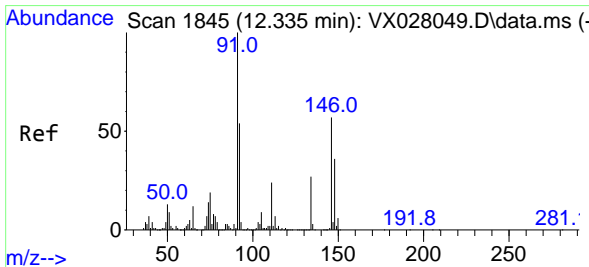
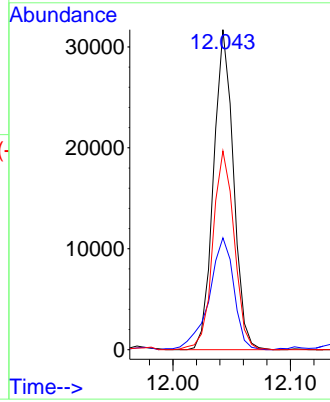
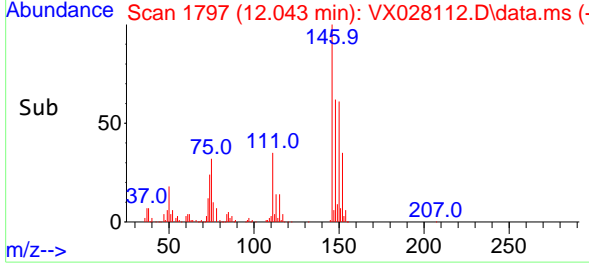
Instrument : MSVOA_X
 ClientSampleId : 220413004-02-VOA



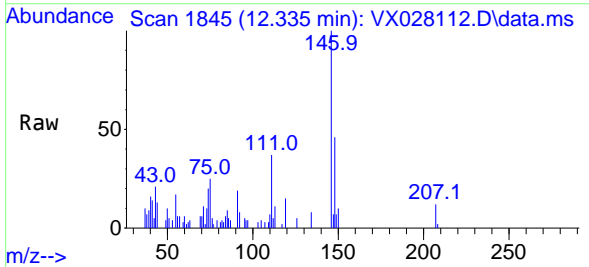
Tgt Ion:146 Resp: 3731
 Ion Ratio Lower Upper
 146 100
 111 43.3 19.2 57.6
 148 66.9 32.3 96.9

Manual Integrations
 APPROVED

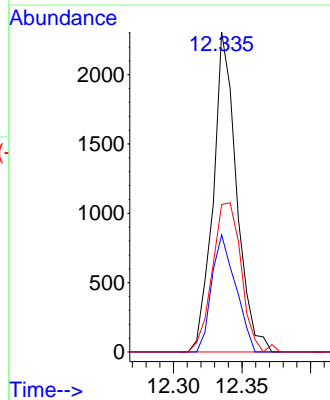
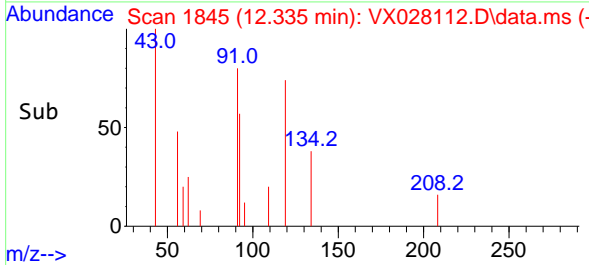
Reviewed By :Krupa Patel 04/15/2022
 Supervised By :Mahesh Dadoda 04/15/2022

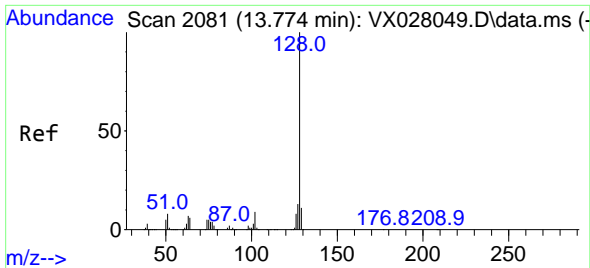


#91
 1,2-Dichlorobenzene
 Concen: 0.483 ug/l
 RT: 12.335 min Scan# 1845
 Delta R.T. 0.000 min
 Lab File: VX028112.D
 Acq: 14 Apr 2022 17:11



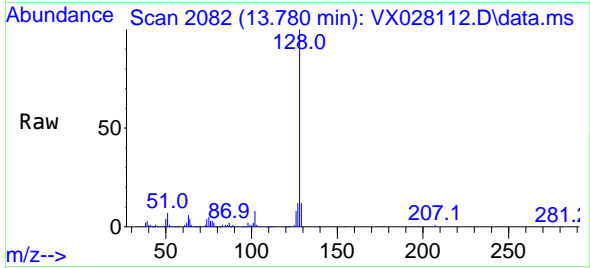
Tgt Ion:146 Resp: 2738
 Ion Ratio Lower Upper
 146 100
 111 37.2 21.0 63.0
 148 57.5 32.6 97.7





#95
 Naphthalene
 Concen: 4.117 ug/l
 RT: 13.780 min Scan# 2081
 Delta R.T. 0.006 min
 Lab File: VX028112.D
 Acq: 14 Apr 2022 17:11

Instrument : MSVOA_X
 Client Sampled : 220413004-02-VOA



Tgt Ion:128 Resp: 45560

Ion	Ratio	Lower	Upper
128	100		
127	12.9	10.2	15.4
129	11.5	8.7	13.1

Manual Integrations
 APPROVED

Reviewed By :Krupa Patel 04/15/2022
 Supervised By :Mahesh Dadoda 04/15/2022

