

Data Path : Z:\voasrv\HPCHEM1\MSVOA_X\Data\VX041423\
 Data File : VX035062.D
 Acq On : 13 Apr 2023 14:27
 Operator : JC/MD
 Sample : 02325-02
 Misc : 5.0mL/MSVOA_X/WATER
 ALS Vial : 10 Sample Multiplier: 1

Instrument :
 MSVOA_X
 ClientSampleId :
 230412032-07-TRIP-BLANK

Integration Parameters: RTEINT.P

Integrator: RTE
 Smoothing : ON Filtering: 5
 Sampling : 1 Min Area: 3 % of largest Peak
 Start Thrs: 0.2 Max Peaks: 100
 Stop Thrs : 0 Peak Location: TOP

If leading or trailing edge < 100 prefer < Baseline drop else tangent >
 Peak separation: 5

Method : Z:\voasrv\HPCHEM1\MSVOA_X\Method\82X032923W.M
 Title : SW846 8260

Signal : TIC: VX035062.D\data.ms

peak #	R.T. min	first scan	max scan	last scan	PK TY	peak height	corr. area	corr. % max.	% of total
1	1.258	25	28	35	rBV2	11155	14014	1.00%	0.188%
2	2.398	207	215	229	rVB	44040	95658	6.84%	1.285%
3	5.099	651	658	671	rVB3	5035	15109	1.08%	0.203%
4	5.385	694	705	719	rBV	152061	444244	31.75%	5.969%
5	5.550	719	732	748	rVB	277890	782321	55.92%	10.512%
6	5.958	789	799	817	rBV	174654	471161	33.68%	6.331%
7	6.763	921	931	946	rBV	434730	1033083	73.84%	13.882%
8	8.647	1233	1240	1258	rBV	875101	1399103	100.00%	18.800%
9	10.055	1465	1471	1486	rBV	891658	1198795	85.68%	16.109%
10	11.079	1634	1639	1650	rBV	694261	908104	64.91%	12.203%
11	12.024	1788	1794	1806	rBV	823140	1080350	77.22%	14.517%

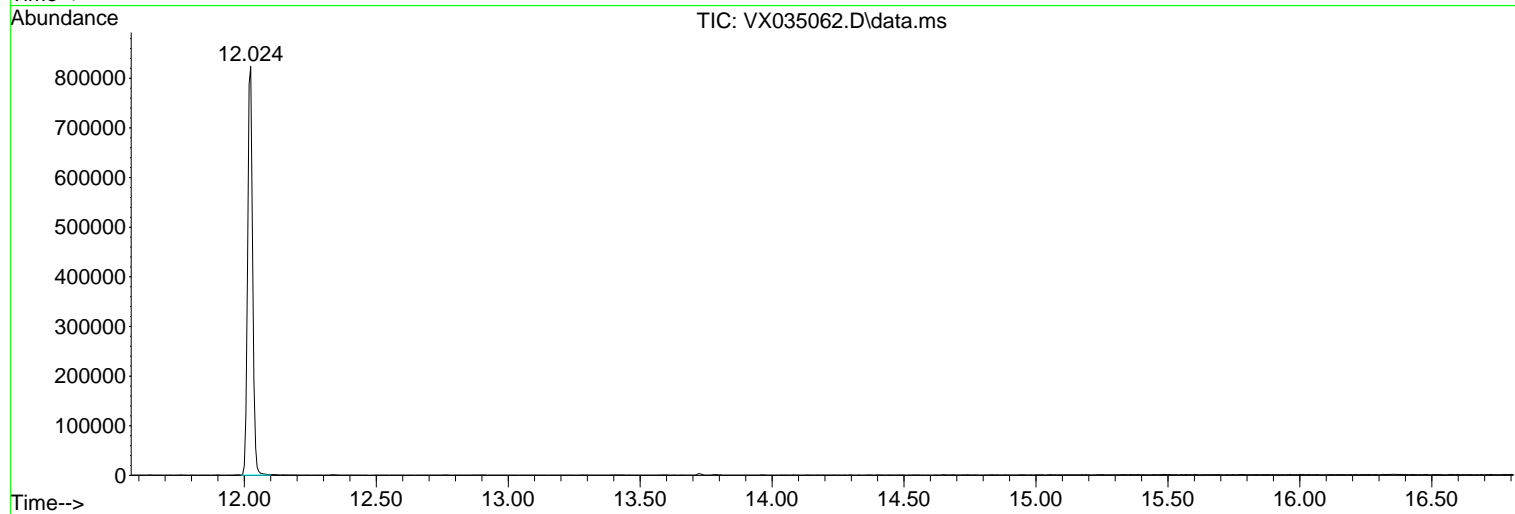
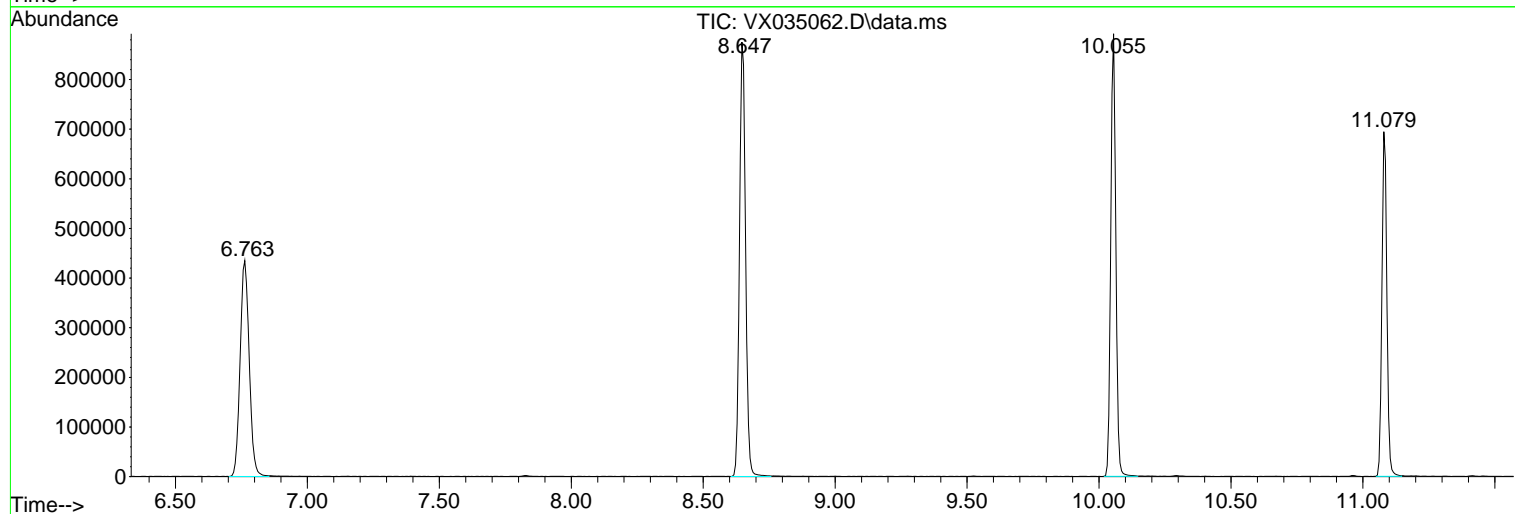
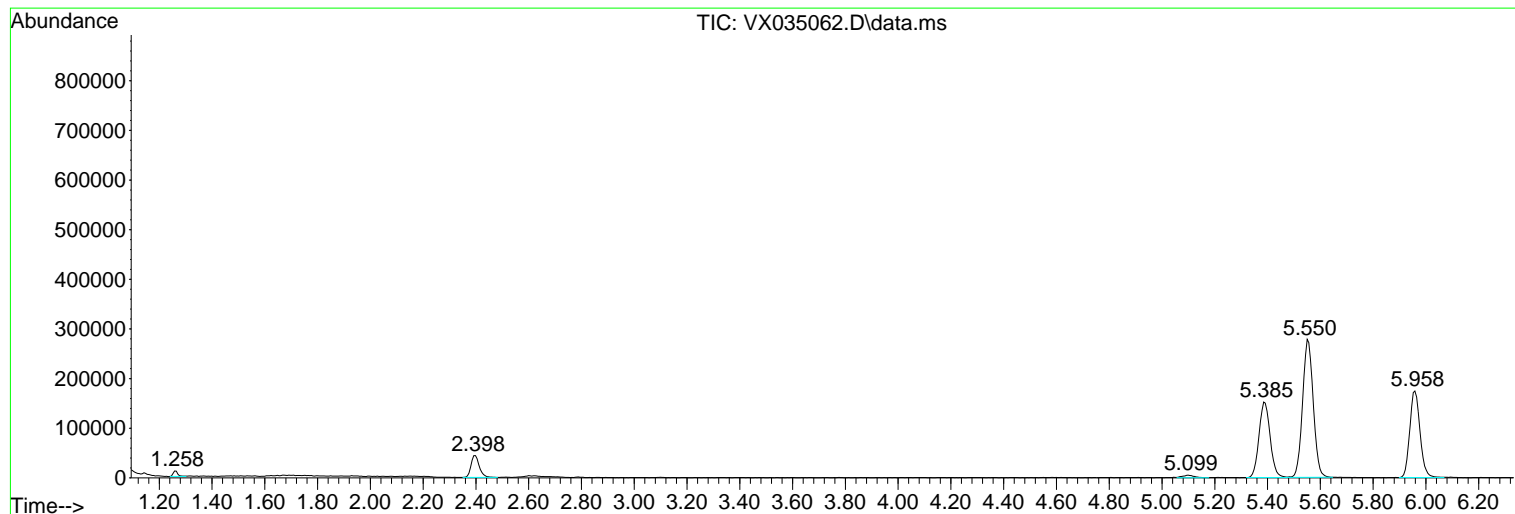
Sum of corrected areas: 7441942

Data Path : Z:\voasrv\HPCHEM1\MSVOA_X\Data\VX041423\
 Data File : VX035062.D
 Acq On : 13 Apr 2023 14:27
 Operator : JC/MD
 Sample : 02325-02
 Misc : 5.0mL/MSVOA_X/WATER
 ALS Vial : 10 Sample Multiplier: 1

Instrument :
 MSVOA_X
 ClientSampleId :
 230412032-07-TRIP-BLANK

Quant Method : Z:\voasrv\HPCHEM1\MSVOA_X\Method\82X032923W.M
 Quant Title : SW846 8260

TIC Library : C:\Database\NIST20.L
 TIC Integration Parameters: LSCINT.P



Library Search Compound Report

Data Path : Z:\voasrv\HPCHEM1\MSVOA_X\Data\VX041423\
Data File : VX035062.D
Acq On : 13 Apr 2023 14:27
Operator : JC/MD
Sample : 02325-02
Misc : 5.0mL/MSVOA_X/WATER
ALS Vial : 10 Sample Multiplier: 1

Instrument :
MSVOA_X
ClientSampleId :
230412032-07-TRIP-BLANK

Quant Method : Z:\voasrv\HPCHEM1\MSVOA_X\Method\82X032923W.M
Quant Title : SW846 8260

TIC Library : C:\Database\NIST20.L
TIC Integration Parameters: LSCINT.P

No Library Search Compounds Detected

Data Path : Z:\voasrv\HPCHEM1\MSVOA_X\Data\VX041423\
Data File : VX035062.D
Acq On : 13 Apr 2023 14:27
Operator : JC/MD
Sample : 02325-02
Misc : 5.0mL/MSVOA_X/WATER
ALS Vial : 10 Sample Multiplier: 1

Instrument :
MSVOA_X
ClientSampleId :
230412032-07-TRIP-BLANK

Quant Method : Z:\voasrv\HPCHEM1\MSVOA_X\Method\82X032923W.M
Quant Title : SW846 8260

TIC Library : C:\Database\NIST20.L
TIC Integration Parameters: LSCINT.P

TIC Top Hit name	RT	EstConc	Units	Response	--Internal Standard--			
					#	RT	Resp	Conc
