

Data Path : Z:\VOASRV\HPCHEM1\MSVOA X\DATA\VX041519\
 Data File : VX008959.D
 Acq On : 15 Apr 2019 14:36
 Operator : JC/SP
 Sample : VX0415WBL01
 Misc : 5.0mL/MSVOA X/WATER
 ALS Vial : 11 Sample Multiplier: 1

Instrument :
 MSVOA_X
 ClientSampleId :

Quant Time: Apr 16 03:22:12 2019
 Quant Method : Z:\VOASRV\HPCHEM1\MSVOA_X\METHOD\82X041519W.M
 Quant Title : SW846 8260
 QLast Update : Tue Apr 16 02:27:32 2019
 Response via : Initial Calibration

| Internal Standards | R.T. | QIon | Response | Conc | Units | Dev(Min) |
|----------------------------|-------|------|----------|-------|-------|----------|
| 1) Pentafluorobenzene | 5.66 | 168 | 255956 | 50.00 | ug/l | 0.00 |
| 34) 1,4-Difluorobenzene | 6.85 | 114 | 408140 | 50.00 | ug/l | 0.00 |
| 63) Chlorobenzene-d5 | 10.11 | 117 | 343520 | 50.00 | ug/l | 0.00 |
| 72) 1,4-Dichlorobenzene-d4 | 12.08 | 152 | 142740 | 50.00 | ug/l | 0.00 |

System Monitoring Compounds

| | | | | | | |
|---------------------------|--------|-----|----------|-------|--------|------|
| 33) 1,2-Dichloroethane-d4 | 6.06 | 65 | 162831 | 45.14 | ug/l | 0.00 |
| Spiked Amount | 50.000 | | Recovery | = | 90.28% | |
| 35) Dibromofluoromethane | 5.49 | 113 | 121351 | 46.33 | ug/l | 0.00 |
| Spiked Amount | 50.000 | | Recovery | = | 92.66% | |
| 50) Toluene-d8 | 8.71 | 98 | 501057 | 47.97 | ug/l | 0.00 |
| Spiked Amount | 50.000 | | Recovery | = | 95.94% | |
| 62) 4-Bromofluorobenzene | 11.13 | 95 | 161102 | 43.69 | ug/l | 0.00 |
| Spiked Amount | 50.000 | | Recovery | = | 87.38% | |

Target Compounds

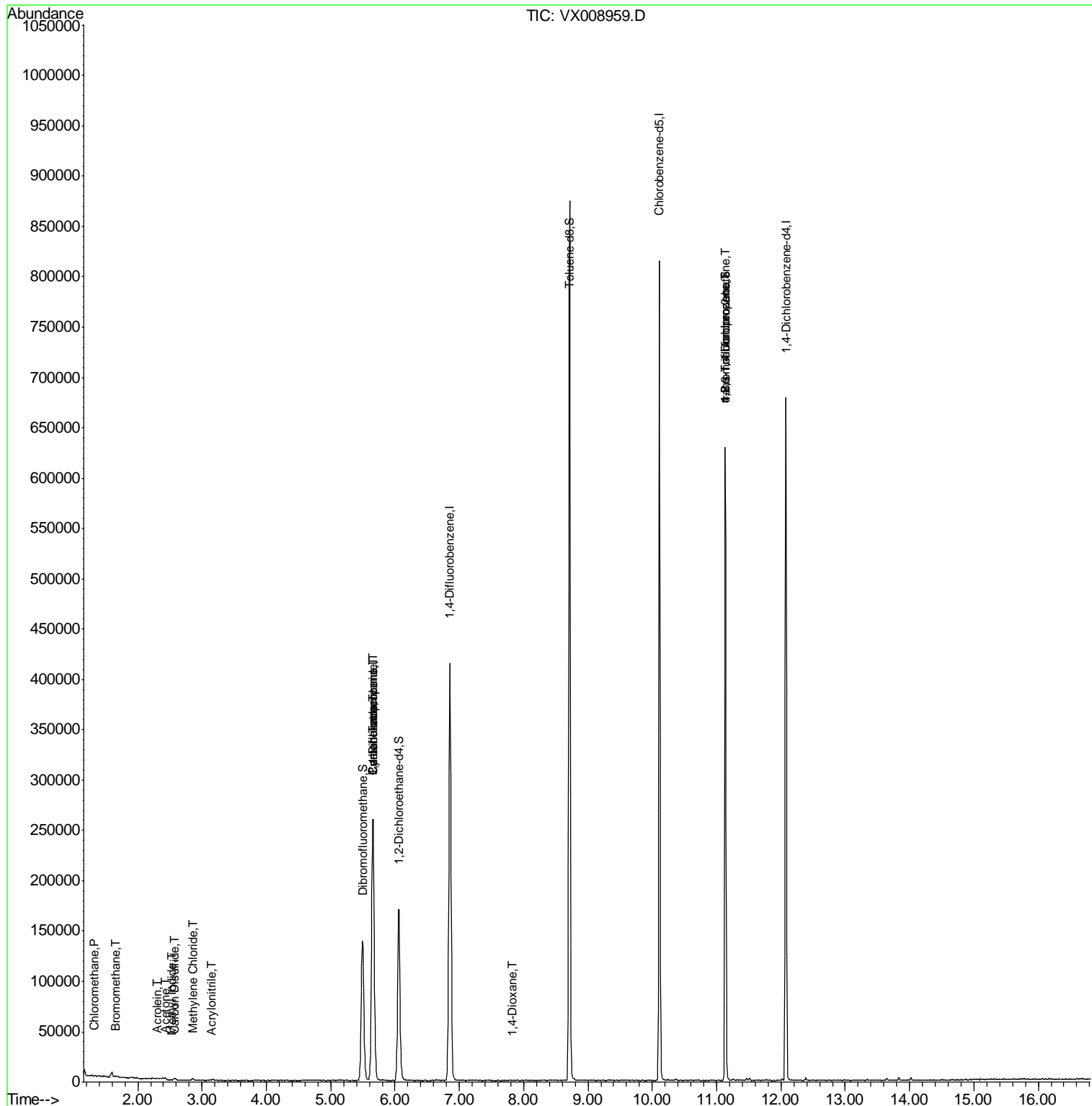
| | | | | | | Qvalue |
|--------------------------------|-------|-----|-------|-----------|--------|--------|
| 3) Chloromethane | 1.32 | 50 | 773 | 0.214 | ug/l | 92 |
| 5) Bromomethane | 1.66 | 94 | 439 | 4.032 | ug/l | 98 |
| 10) Methyl Iodide | 2.52 | 142 | 527 | 4.582 | ug/l # | 91 |
| 13) Acrolein | 2.29 | 56 | 417 | 0.603 | ug/l # | 52 |
| 15) Acrylonitrile | 3.14 | 53 | 713 | 0.351 | ug/l # | 79 |
| 16) Acetone | 2.43 | 43 | 804 | 0.430 | ug/l # | 84 |
| 17) Carbon Disulfide | 2.57 | 76 | 2228 | 1.522 | ug/l # | 91 |
| 20) Methylene Chloride | 2.85 | 84 | 807 | 0.252 | ug/l | 86 |
| 28) Bromochloromethane | 5.01 | 49 | 340 | Below Cal | # | 21 |
| 31) Cyclohexane | 5.66 | 56 | 5198 | 0.905 | ug/l # | 1 |
| 36) 1,1-Dichloropropene | 5.65 | 75 | 19879 | 4.709 | ug/l # | 50 |
| 38) Carbon Tetrachloride | 5.65 | 117 | 23856 | 6.667 | ug/l # | 18 |
| 49) 1,4-Dioxane | 7.84 | 88 | 38 | 0.469 | ug/l # | 1 |
| 76) 1,2,3-Trichloropropane | 11.13 | 75 | 82900 | 23.785 | ug/l # | 33 |
| 81) trans-1,4-Dichloro-2-buten | 11.13 | 75 | 82900 | 61.062 | ug/l # | 11 |

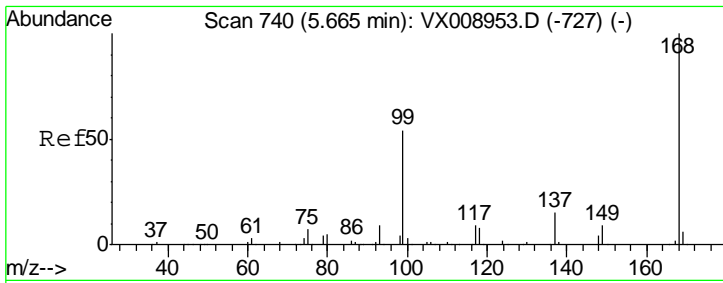
(#) = qualifier out of range (m) = manual integration (+) = signals summed

Data Path : Z:\VOASRV\HPCHEM1\MSVOA X\DATA\VX041519\
 Data File : VX008959.D
 Acq On : 15 Apr 2019 14:36
 Operator : JC/SP
 Sample : VX0415WBL01
 Misc : 5.0mL/MSVOA X/WATER
 ALS Vial : 11 Sample Multiplier: 1

Instrument :
 MSVOA_X
 ClientSampled :

Quant Time: Apr 16 03:22:12 2019
 Quant Method : Z:\VOASRV\HPCHEM1\MSVOA_X\METHOD\82X041519W.M
 Quant Title : SW846 8260
 QLast Update : Tue Apr 16 02:27:32 2019
 Response via : Initial Calibration

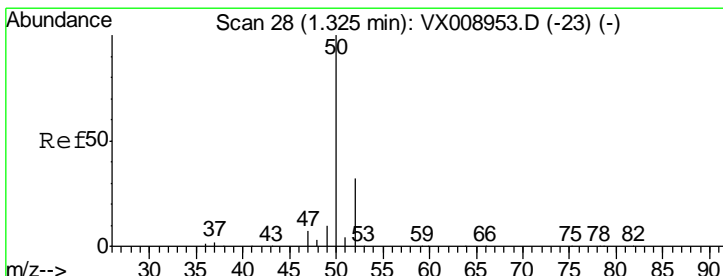
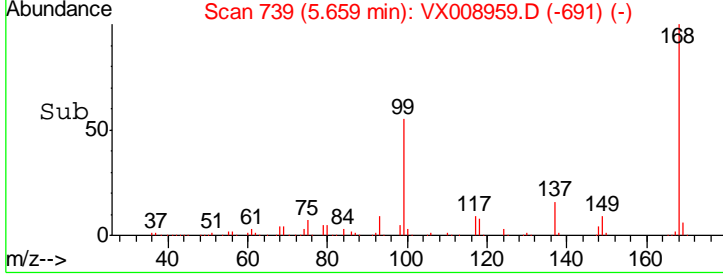
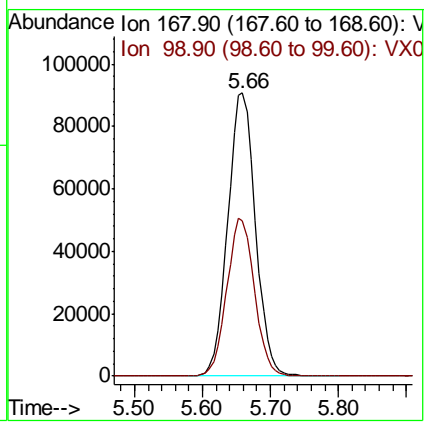
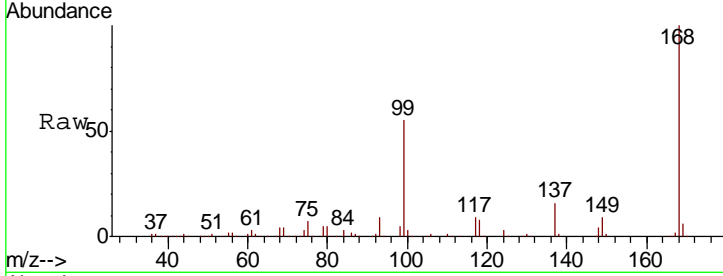




#1
 Pentafluorobenzene
 Concen: 50.000 ug/l
 RT: 5.66 min Scan# 739
 Delta R.T. -0.01 min
 Lab File: VX008959.D
 Acq: 15 Apr 2019 14:36

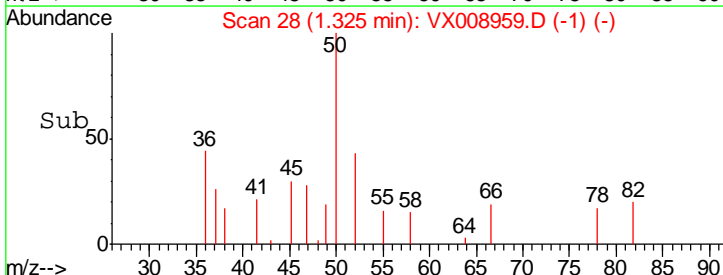
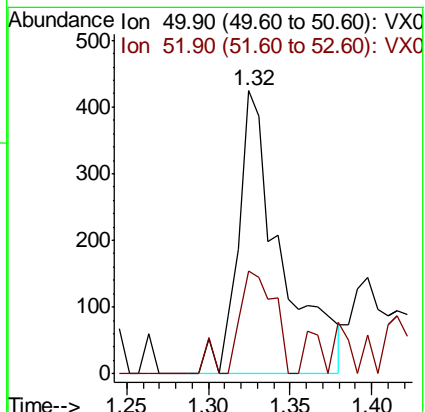
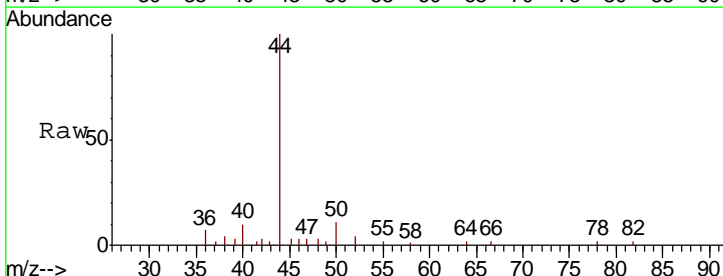
Instrument : MSVOA_X
 ClientSampled :

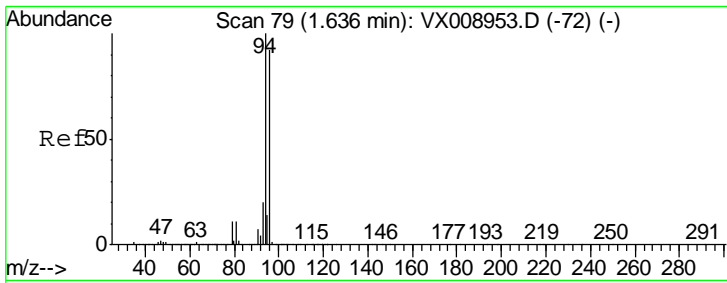
Tot Ion: 168 Resp: 255956
 Ion Ratio Lower Upper
 168 100
 99 54.9 43.0 64.6



#3
 Chloromethane
 Concen: 0.214 ug/l
 RT: 1.32 min Scan# 28
 Delta R.T. -0.00 min
 Lab File: VX008959.D
 Acq: 15 Apr 2019 14:36

Tgt Ion: 50 Resp: 773
 Ion Ratio Lower Upper
 50 100
 52 36.3 25.5 38.3

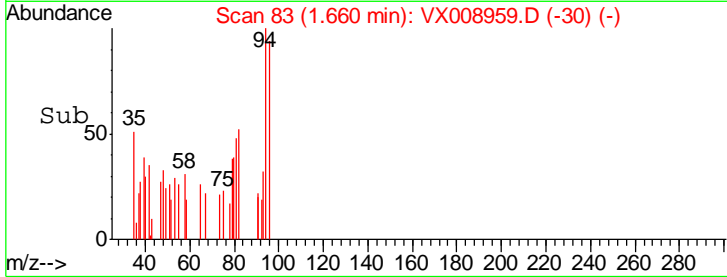
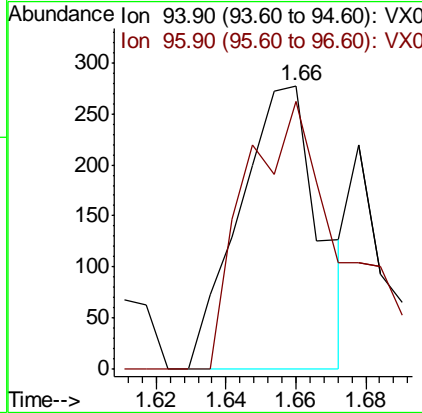
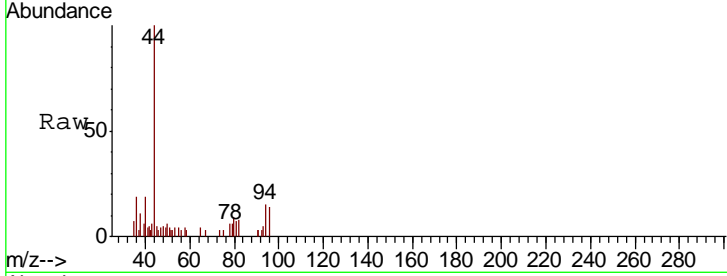




#5
 Bromomethane
 Concen: 4.032 ug/l
 RT: 1.66 min Scan# 83
 Delta R.T. 0.02 min
 Lab File: VX008959.D
 Acq: 15 Apr 2019 14:36

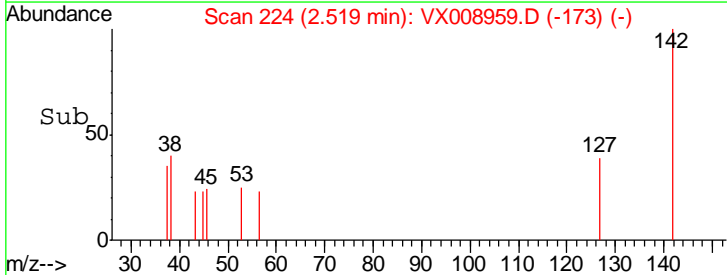
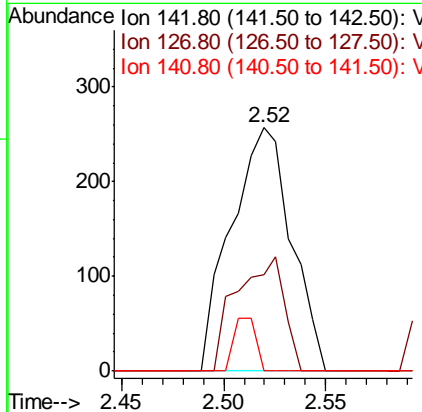
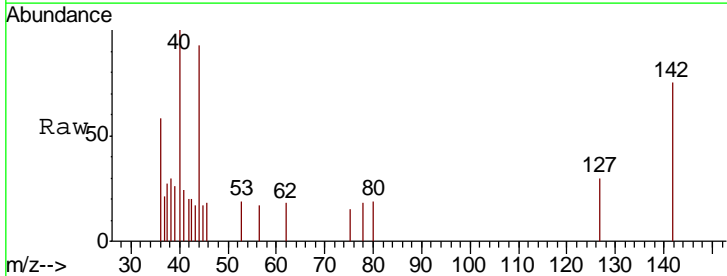
Instrument : MSVOA_X
 ClientSampled :

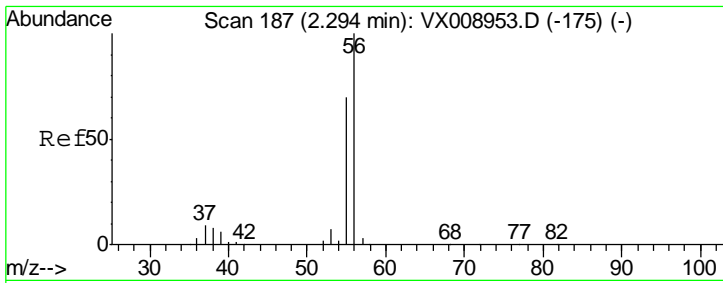
| Tgt Ion | Resp | Lower | Upper |
|---------|------|-------|-------|
| 94 | 439 | | |
| 96 | 100 | 73.9 | 110.9 |



#10
 Methyl Iodide
 Concen: 4.582 ug/l
 RT: 2.52 min Scan# 224
 Delta R.T. 0.01 min
 Lab File: VX008959.D
 Acq: 15 Apr 2019 14:36

| Tgt Ion | Resp | Lower | Upper |
|---------|------|-------|-------|
| 142 | 527 | | |
| 127 | 100 | 32.8 | 49.2 |
| 141 | 7.8 | 11.4 | 17.2# |

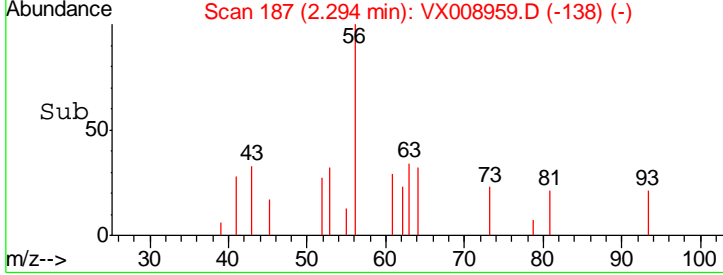
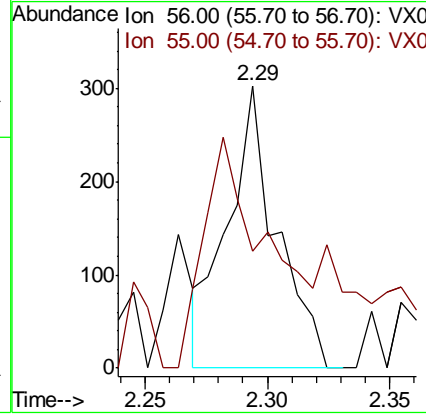
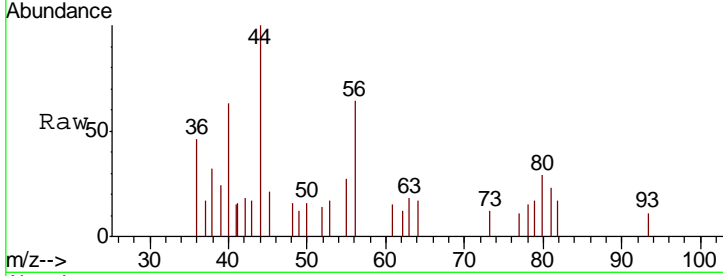




#13
 Acrolein
 Concen: 0.603 ug/l
 RT: 2.29 min Scan# 187
 Delta R.T. -0.00 min
 Lab File: VX008959.D
 Acq: 15 Apr 2019 14:36

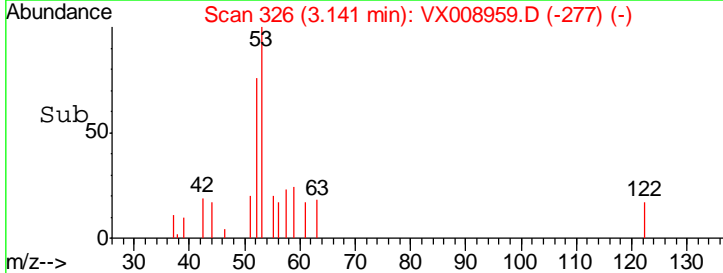
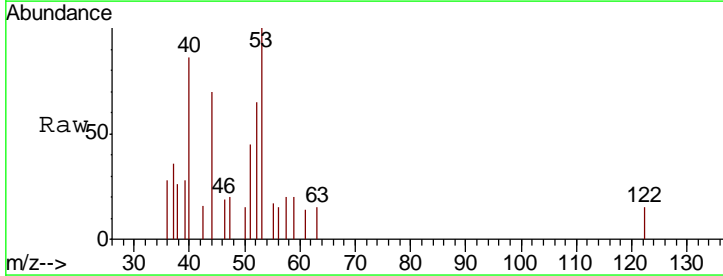
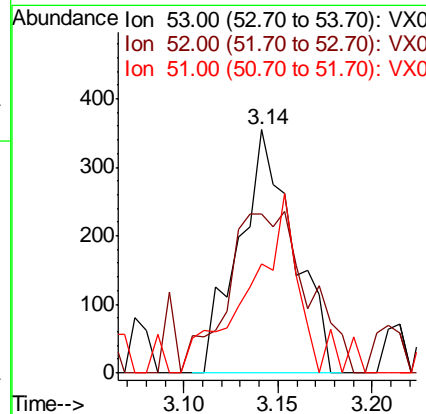
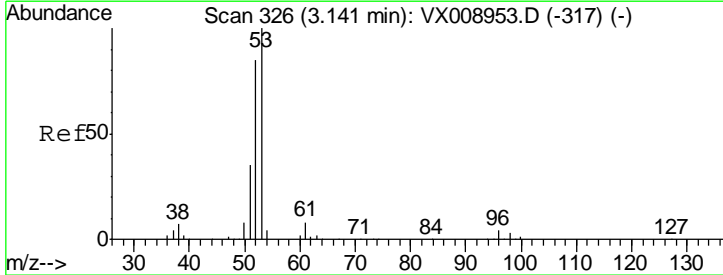
Instrument :
 MSVOA_X
 ClientSampled :

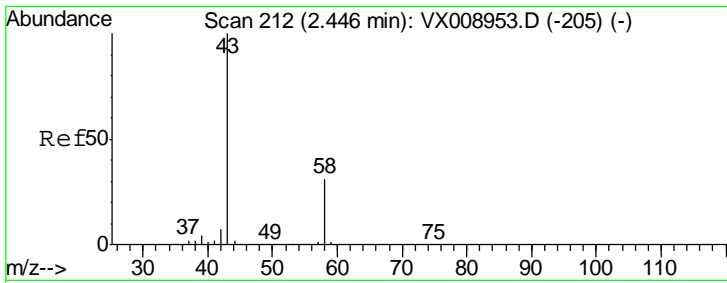
| Tgt Ion | Resp | Lower | Upper |
|---------|-------|-------|-------|
| 56 | 417 | | |
| 55 | 110.3 | 56.6 | 84.8# |



#15
 Acrylonitrile
 Concen: 0.351 ug/l
 RT: 3.14 min Scan# 326
 Delta R.T. -0.00 min
 Lab File: VX008959.D
 Acq: 15 Apr 2019 14:36

| Tgt Ion | Resp | Lower | Upper |
|---------|------|-------|-------|
| 53 | 713 | | |
| 52 | 91.3 | 66.6 | 100.0 |
| 51 | 63.8 | 28.3 | 42.5# |

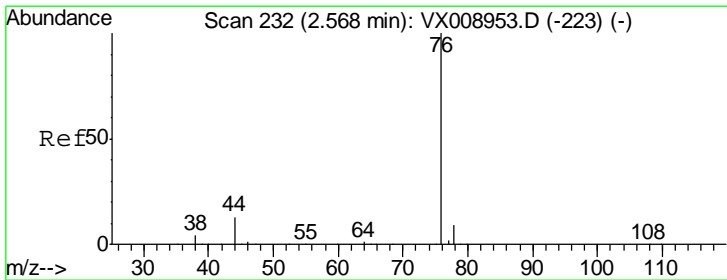
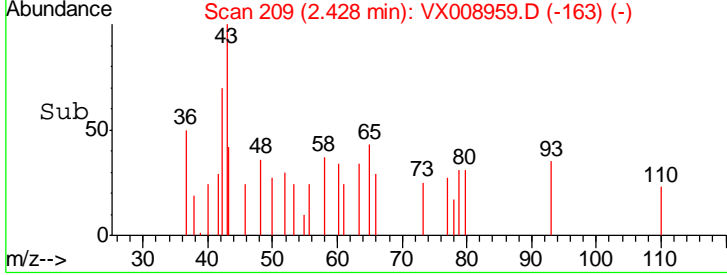
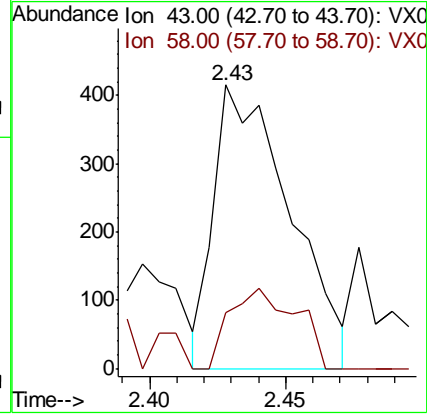
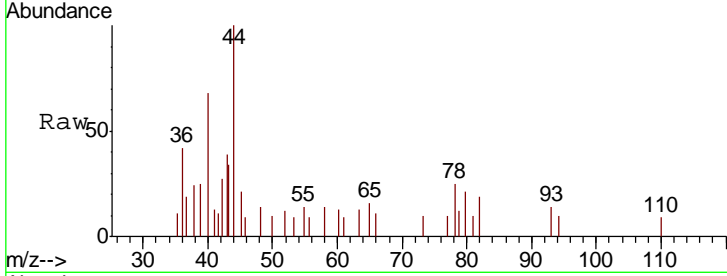




#16
 Acetone
 Concen: 0.430 ug/l
 RT: 2.43 min Scan# 209
 Delta R.T. -0.02 min
 Lab File: VX008959.D
 Acq: 15 Apr 2019 14:36

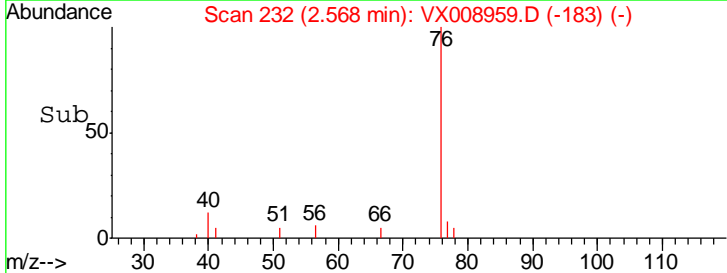
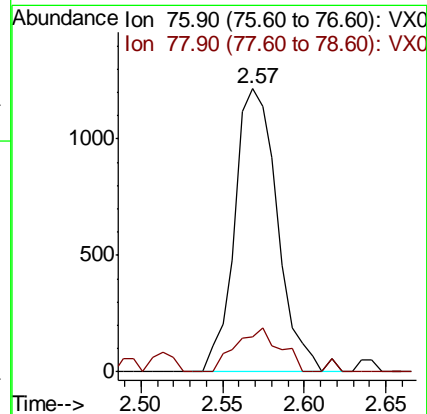
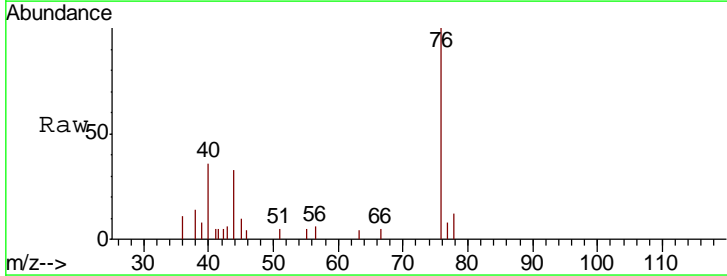
Instrument :
 MSVOA_X
 ClientSampled :

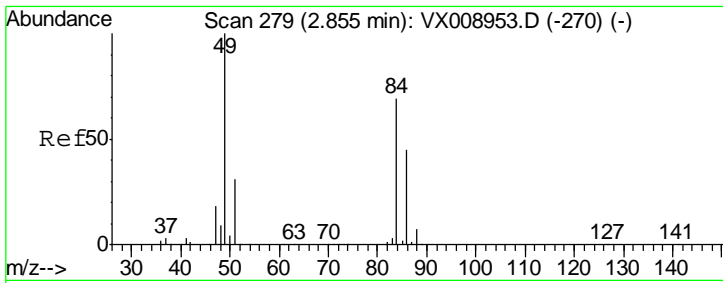
| Tgt Ion | Resp | Lower | Upper |
|---------|------|-------|-------|
| 43 | 804 | | |
| 58 | 22.4 | 24.8 | 37.2# |



#17
 Carbon Disulfide
 Concen: 1.522 ug/l
 RT: 2.57 min Scan# 232
 Delta R.T. 0.00 min
 Lab File: VX008959.D
 Acq: 15 Apr 2019 14:36

| Tgt Ion | Resp | Lower | Upper |
|---------|------|-------|-------|
| 76 | 2228 | | |
| 78 | 12.3 | 7.2 | 10.8# |

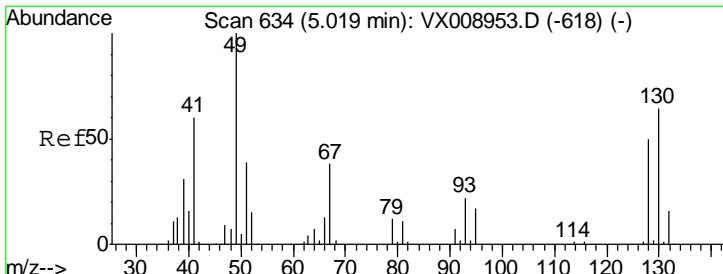
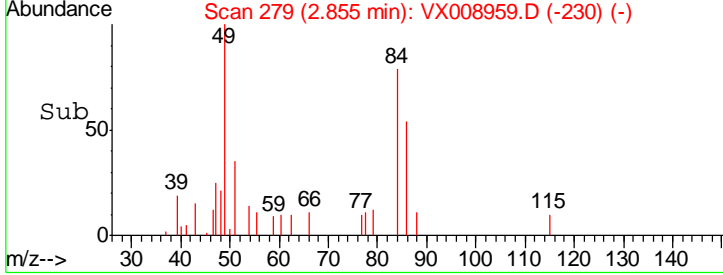
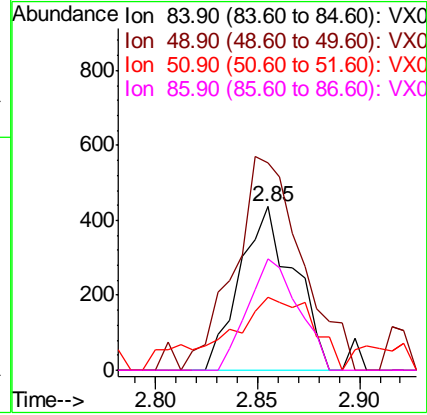
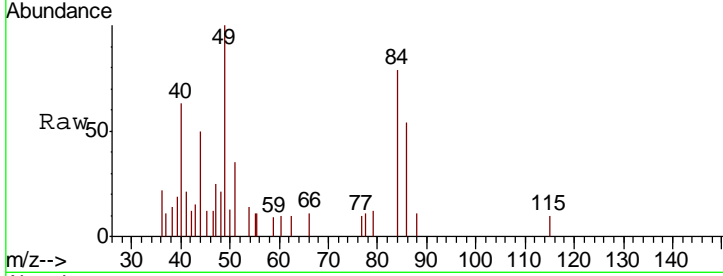




#20
 Methylene Chloride
 Concen: 0.252 ug/l
 RT: 2.85 min Scan# 279
 Delta R.T. -0.00 min
 Lab File: VX008959.D
 Acq: 15 Apr 2019 14:36

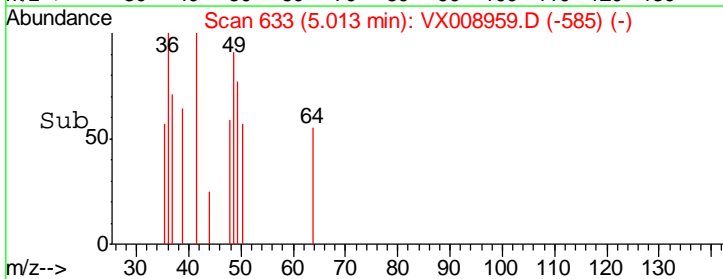
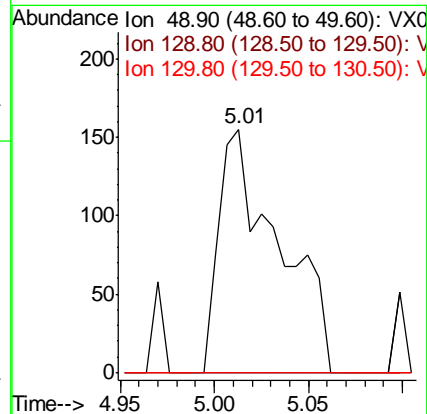
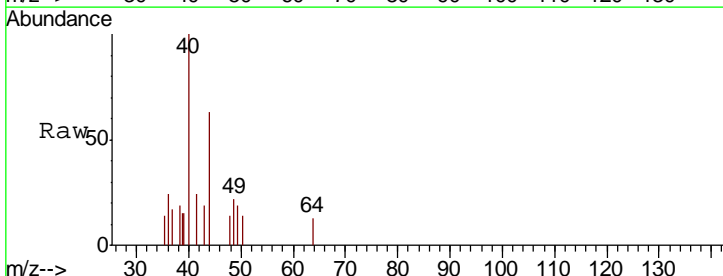
Instrument :
 MSVOA_X
 ClientSampled :

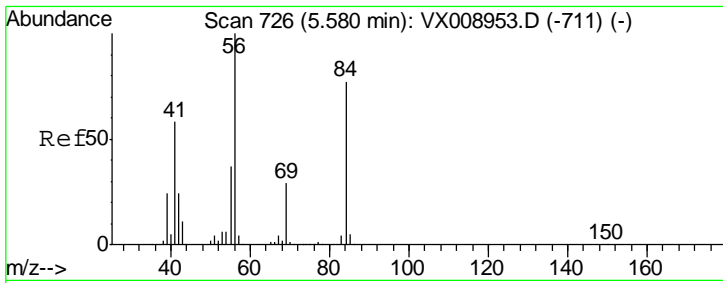
| Tgt Ion | Resp | Lower | Upper |
|---------|-------|-------|-------|
| 84 | 100 | | |
| 49 | 115.4 | 115.4 | 173.0 |
| 51 | 45.0 | 35.8 | 53.6 |
| 86 | 68.6 | 52.1 | 78.1 |



#28
 Bromochloromethane
 Concen: Below Cal
 RT: 5.01 min Scan# 633
 Delta R.T. -0.01 min
 Lab File: VX008959.D
 Acq: 15 Apr 2019 14:36

| Tgt Ion | Resp | Lower | Upper |
|---------|------|-------|-------|
| 49 | 100 | | |
| 129 | 0.0 | 0.0 | 3.6 |
| 130 | 0.0 | 50.4 | 75.6# |

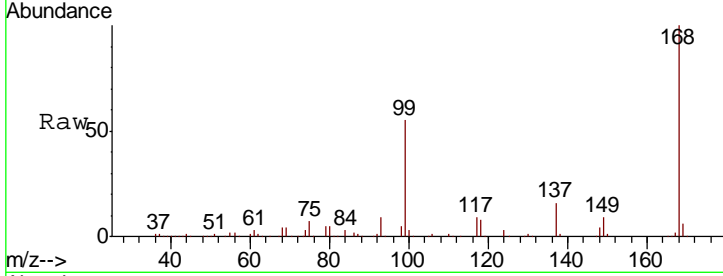




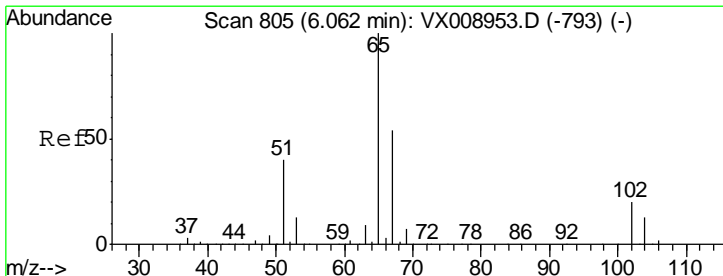
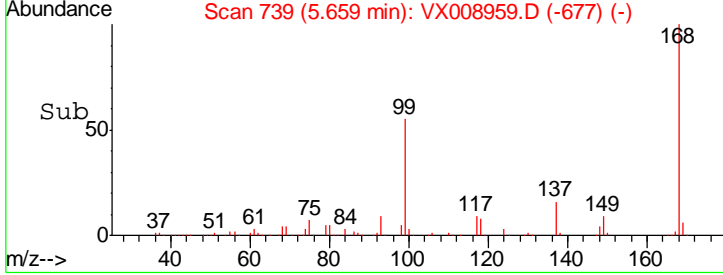
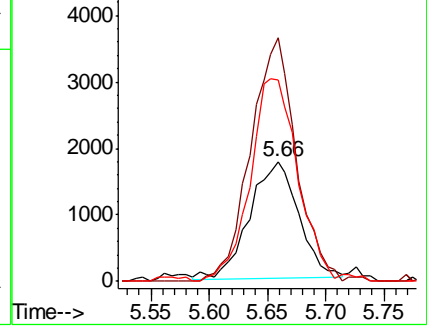
#31
 Cyclohexane
 Concen: 0.905 ug/l
 RT: 5.66 min Scan# 739
 Delta R.T. 0.08 min
 Lab File: VX008959.D
 Acq: 15 Apr 2019 14:36

Instrument :
 MSVOA_X
 ClientSampled :

| Tgt Ion | Resp | Lower | Upper |
|---------|-------|-------|-------|
| 56 | 100 | | |
| 69 | 209.3 | 23.3 | 34.9# |
| 84 | 173.4 | 61.7 | 92.5# |

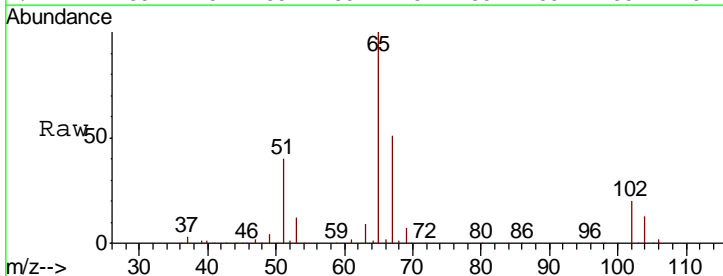


Abundance Ion 56.00 (55.70 to 56.70): VX0
 Ion 69.00 (68.70 to 69.70): VX0
 Ion 84.00 (83.70 to 84.70): VX0

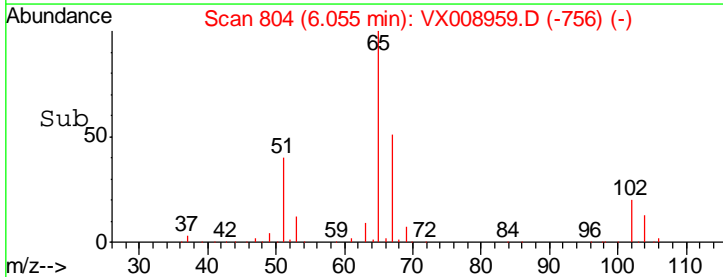
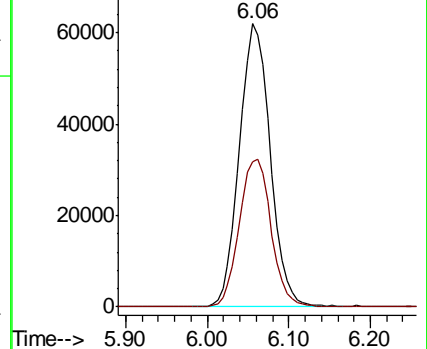


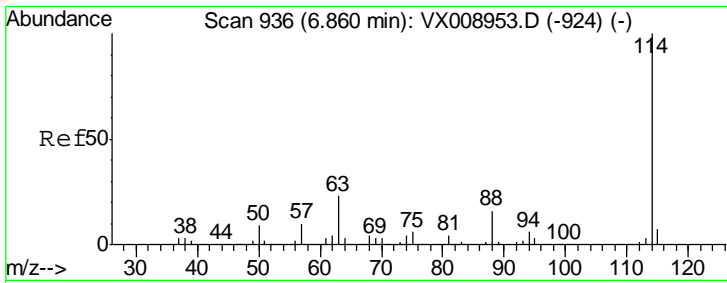
#33
 1,2-Dichloroethane-d4
 Concen: 45.141 ug/l
 RT: 6.06 min Scan# 804
 Delta R.T. -0.01 min
 Lab File: VX008959.D
 Acq: 15 Apr 2019 14:36

| Tgt Ion | Resp | Lower | Upper |
|---------|------|-------|-------|
| 65 | 100 | | |
| 67 | 53.9 | 0.0 | 108.6 |



Abundance Ion 64.90 (64.60 to 65.60): VX0
 Ion 66.90 (66.60 to 67.60): VX0

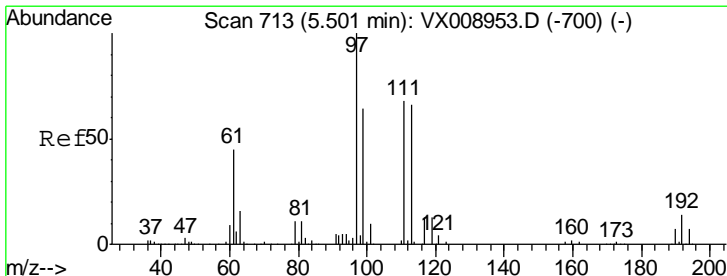
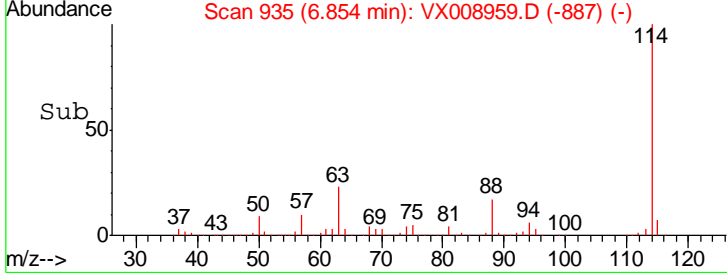
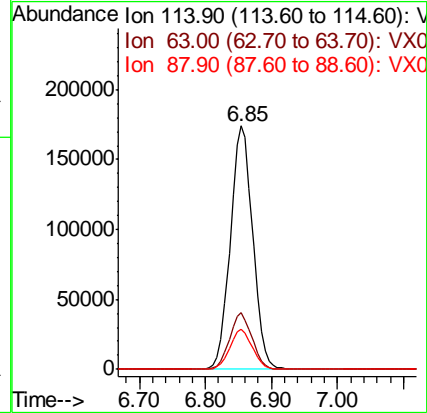
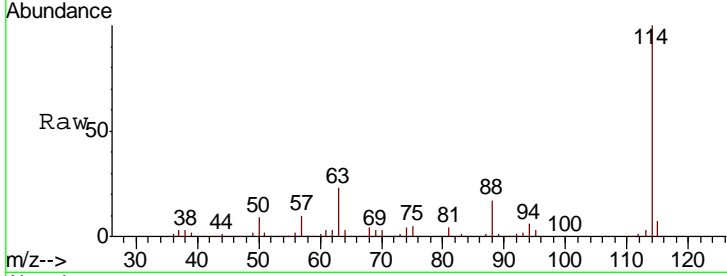




#34
 1,4-Difluorobenzene
 Concen: 50.000 ug/l
 RT: 6.85 min Scan# 935
 Delta R.T. -0.01 min
 Lab File: VX008959.D
 Acq: 15 Apr 2019 14:36

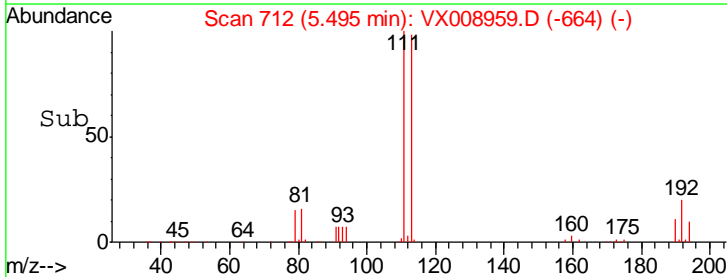
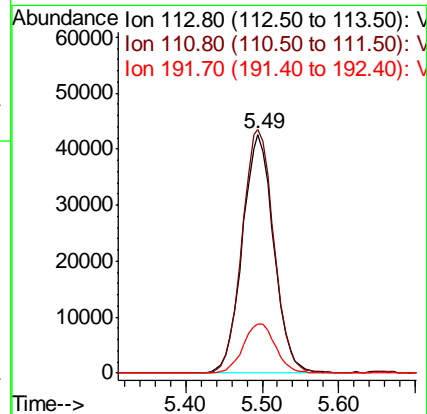
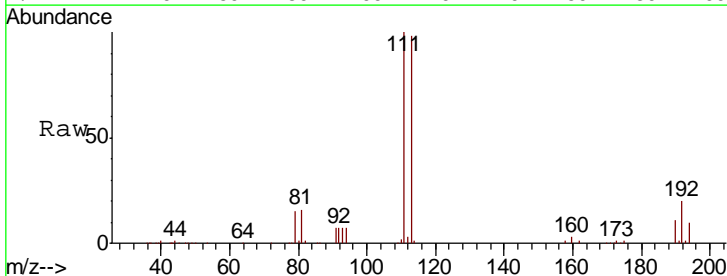
Instrument :
 MSVOA_X
 ClientSampled :

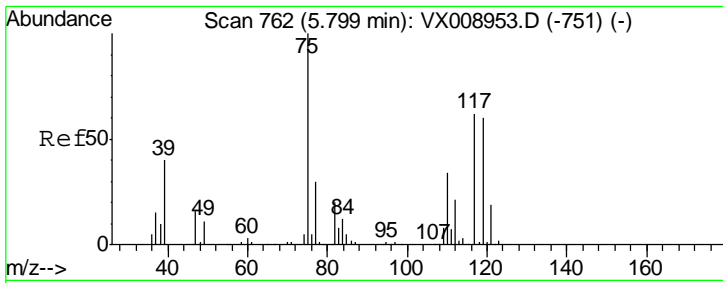
| Tgt Ion | Resp | Lower | Upper |
|---------|------|-------|-------|
| 114 | 100 | | |
| 63 | 23.3 | 0.0 | 46.0 |
| 88 | 16.5 | 0.0 | 32.6 |



#35
 Dibromofluoromethane
 Concen: 46.329 ug/l
 RT: 5.49 min Scan# 712
 Delta R.T. -0.01 min
 Lab File: VX008959.D
 Acq: 15 Apr 2019 14:36

| Tgt Ion | Resp | Lower | Upper |
|---------|-------|-------|-------|
| 113 | 100 | | |
| 111 | 103.1 | 82.9 | 124.3 |
| 192 | 21.4 | 17.4 | 26.0 |

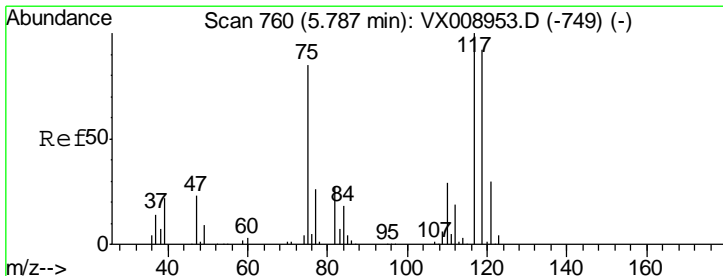
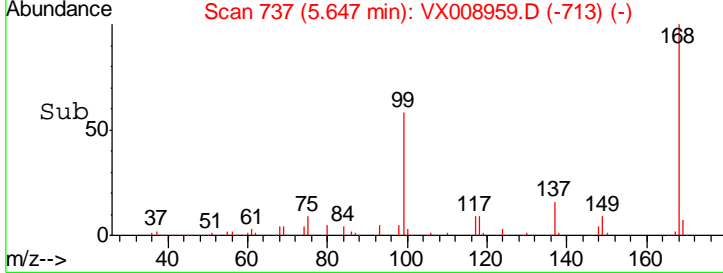
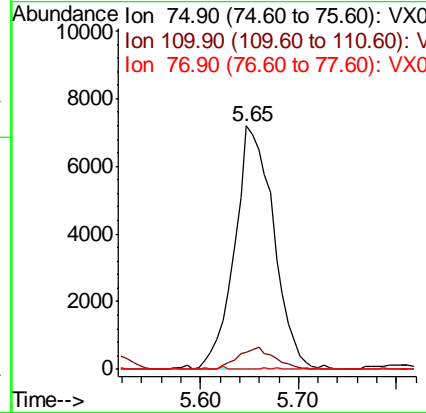
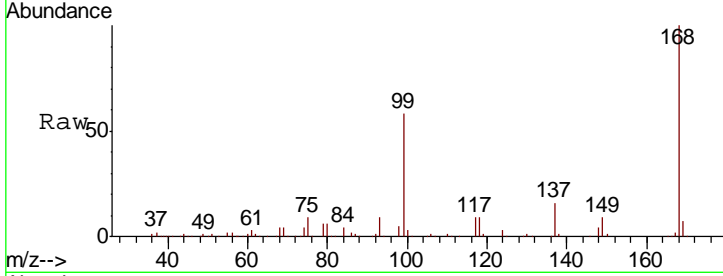




#36
 1,1-Dichloropropene
 Concen: 4.709 ug/l
 RT: 5.65 min Scan# 737
 Delta R.T. -0.15 min
 Lab File: VX008959.D
 Acq: 15 Apr 2019 14:36

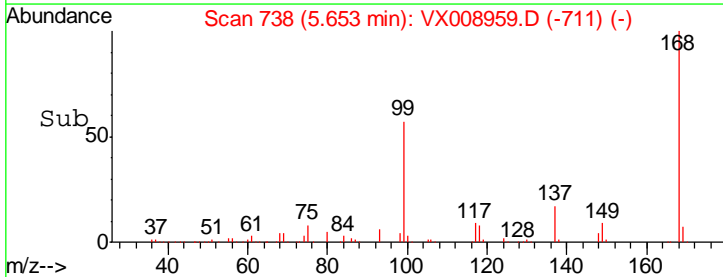
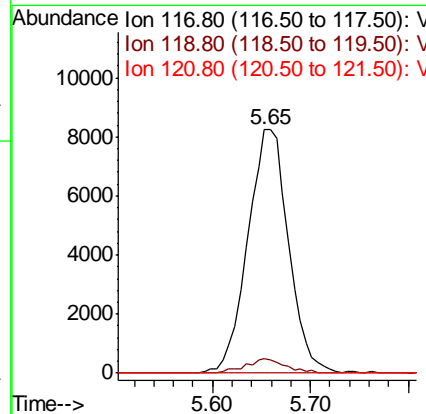
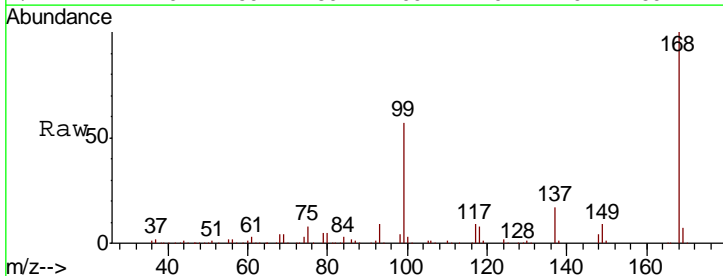
Instrument :
 MSVOA_X
 ClientSampled :

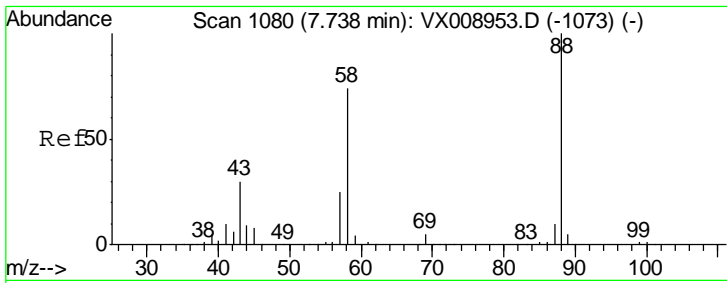
| Tgt Ion | Resp | Lower | Upper |
|---------|-------|-------|-------|
| 75 | 19879 | | |
| 110 | 8.4 | 16.9 | 50.7# |
| 77 | 0.2 | 25.0 | 37.4# |



#38
 Carbon Tetrachloride
 Concen: 6.667 ug/l
 RT: 5.65 min Scan# 738
 Delta R.T. -0.13 min
 Lab File: VX008959.D
 Acq: 15 Apr 2019 14:36

| Tgt Ion | Resp | Lower | Upper |
|---------|-------|-------|--------|
| 117 | 23856 | | |
| 119 | 6.0 | 73.8 | 110.8# |
| 121 | 0.0 | 23.6 | 35.4# |

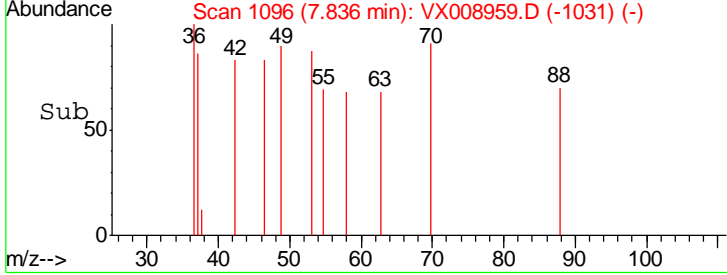
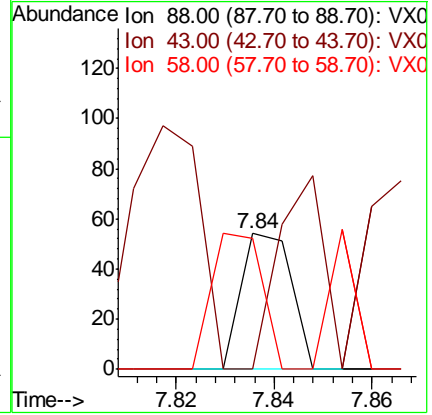
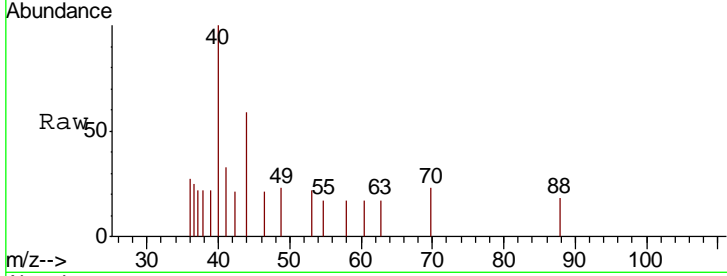




#49
 1,4-Dioxane
 Concen: 0.469 ug/l
 RT: 7.84 min Scan# 1096
 Delta R.T. 0.10 min
 Lab File: VX008959.D
 Acq: 15 Apr 2019 14:36

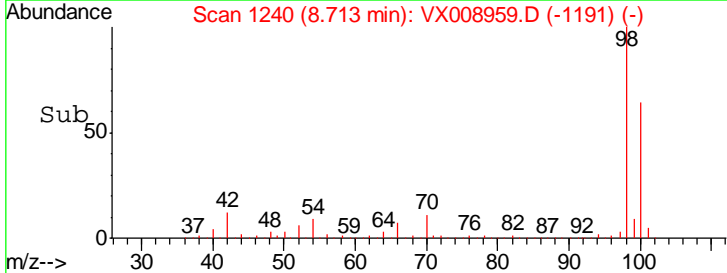
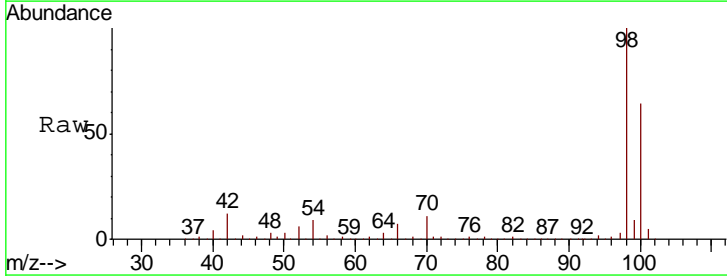
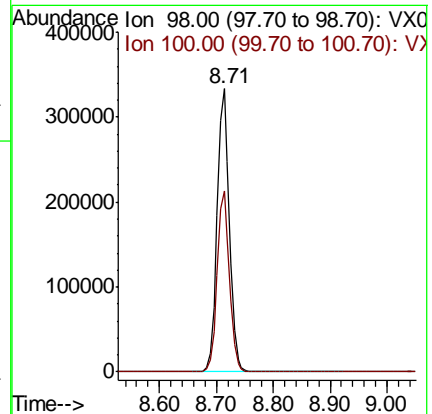
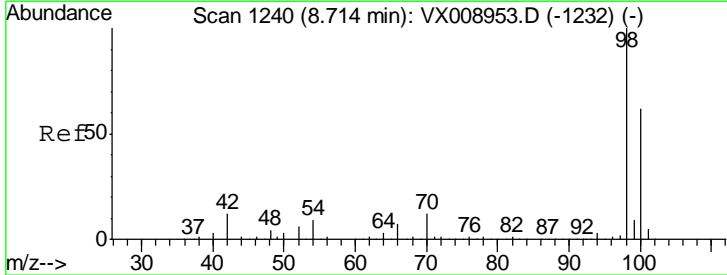
Instrument :
 MSVOA_X
 ClientSampled :

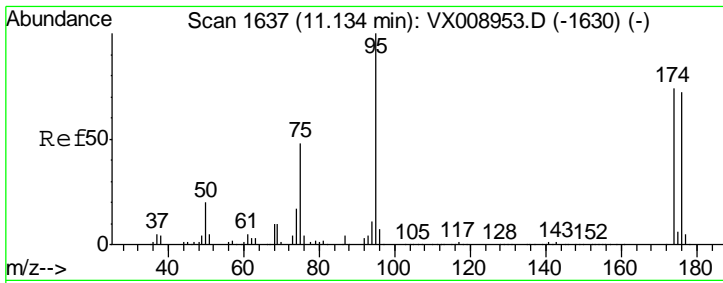
| Tgt Ion | Resp | Lower | Upper |
|---------|-------|-------|-------|
| 88 | 100 | | |
| 43 | 247.4 | 29.3 | 43.9# |
| 58 | 102.6 | 62.6 | 93.8# |



#50
 Toluene-d8
 Concen: 47.966 ug/l
 RT: 8.71 min Scan# 1240
 Delta R.T. -0.00 min
 Lab File: VX008959.D
 Acq: 15 Apr 2019 14:36

| Tgt Ion | Resp | Lower | Upper |
|---------|------|-------|-------|
| 98 | 100 | | |
| 100 | 63.9 | 51.4 | 77.2 |

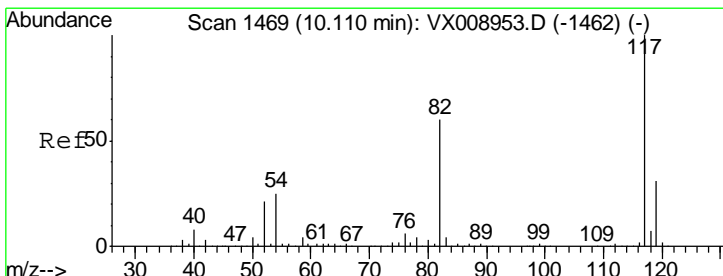
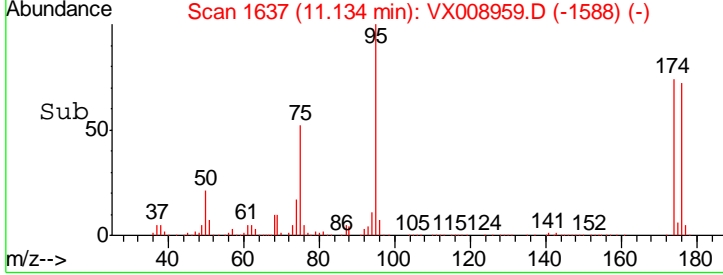
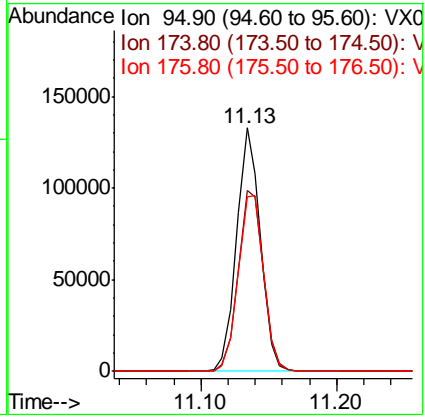
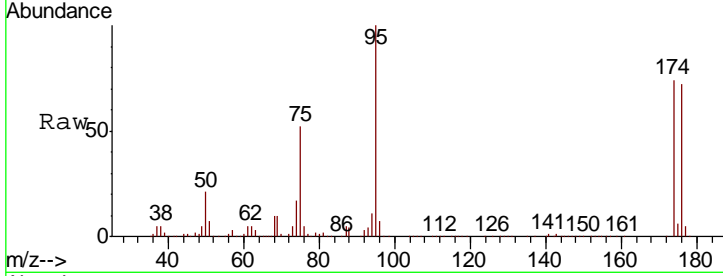




#62
 4-Bromofluorobenzene
 Concen: 43.689 ug/l
 RT: 11.13 min Scan# 1637
 Delta R.T. -0.00 min
 Lab File: VX008959.D
 Acq: 15 Apr 2019 14:36

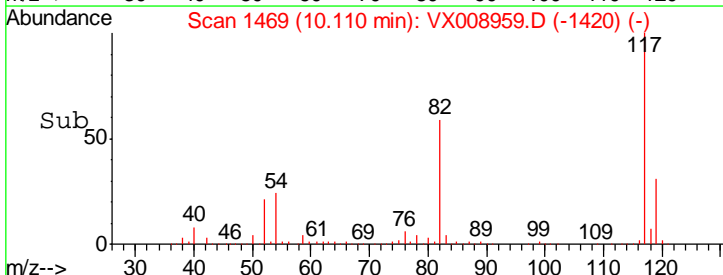
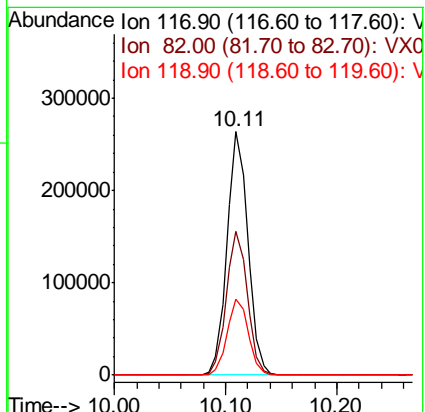
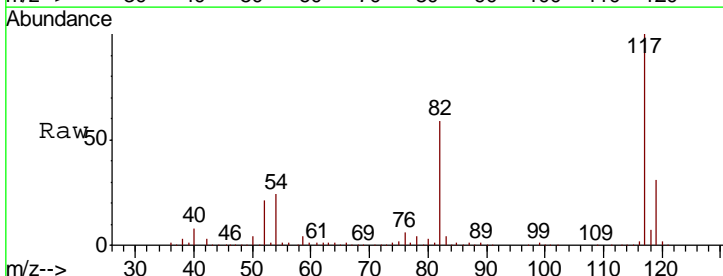
Instrument :
 MSVOA_X
 ClientSampled :

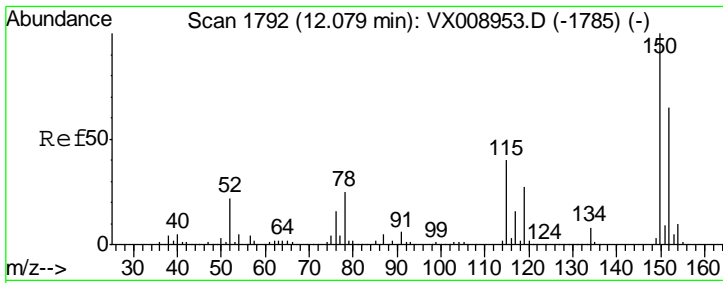
| Tgt Ion | Resp | Lower | Upper |
|---------|--------|-------|-------|
| 95 | 161102 | | |
| 174 | 79.2 | 0.0 | 159.6 |
| 176 | 77.7 | 0.0 | 154.8 |



#63
 Chlorobenzene-d5
 Concen: 50.000 ug/l
 RT: 10.11 min Scan# 1469
 Delta R.T. -0.00 min
 Lab File: VX008959.D
 Acq: 15 Apr 2019 14:36

| Tgt Ion | Resp | Lower | Upper |
|---------|--------|-------|-------|
| 117 | 343520 | | |
| 82 | 59.3 | 48.2 | 72.4 |
| 119 | 31.2 | 25.0 | 37.6 |

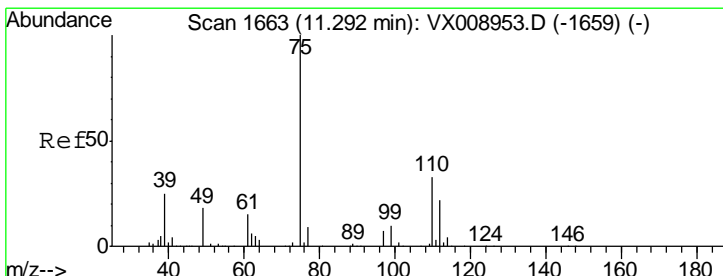
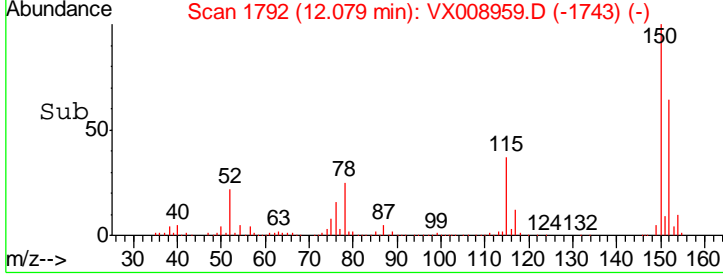
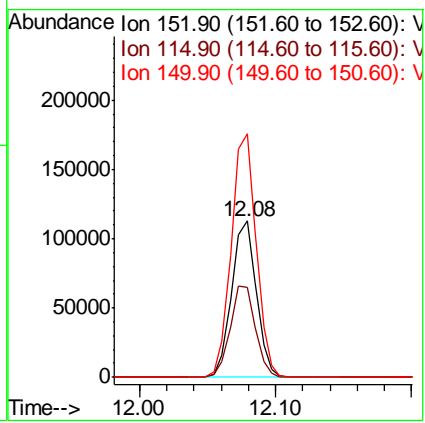
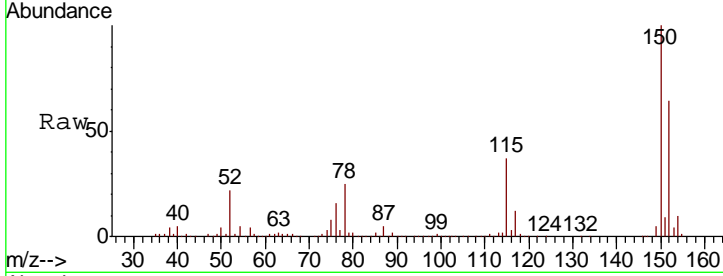




#72
 1,4-Dichlorobenzene-d4
 Concen: 50.000 ug/l
 RT: 12.08 min Scan# 1792
 Delta R.T. -0.00 min
 Lab File: VX008959.D
 Acq: 15 Apr 2019 14:36

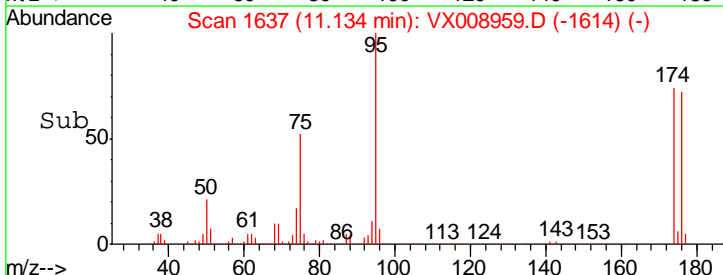
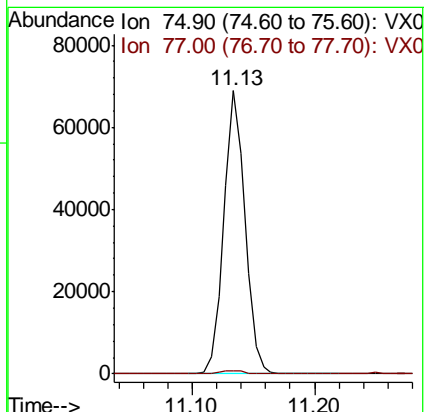
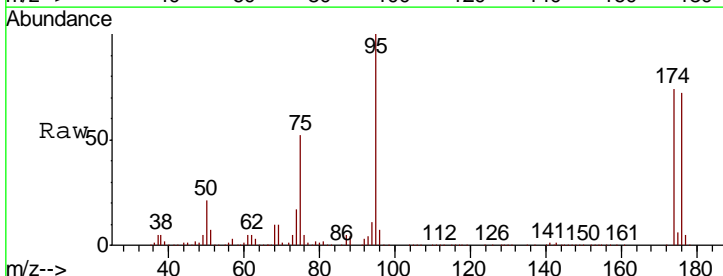
Instrument : MSVOA_X
 ClientSampled :

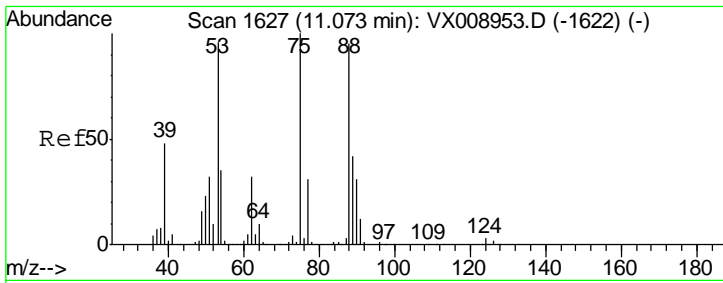
| Tgt Ion | Resp | Lower | Upper |
|---------|-------|-------|-------|
| 152 | 100 | | |
| 115 | 59.5 | 41.4 | 124.2 |
| 150 | 156.9 | 0.0 | 349.8 |



#76
 1,2,3-Trichloropropane
 Concen: 23.785 ug/l
 RT: 11.13 min Scan# 1637
 Delta R.T. -0.16 min
 Lab File: VX008959.D
 Acq: 15 Apr 2019 14:36

| Tgt Ion | Resp | Lower | Upper |
|---------|------|-------|-------|
| 75 | 100 | | |
| 77 | 1.3 | 22.7 | 68.0 |

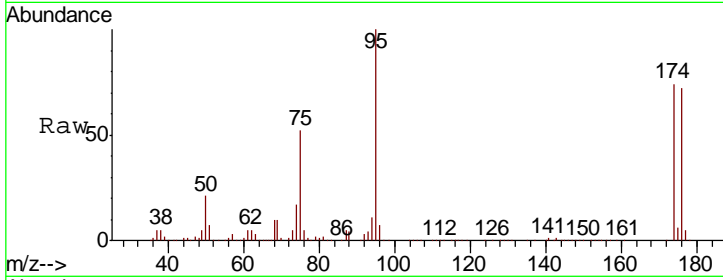




#81
 trans-1,4-Dichloro-2-butene
 Concen: 61.062 ug/l
 RT: 11.13 min Scan# 1637
 Delta R.T. 0.06 min
 Lab File: VX008959.D
 Acq: 15 Apr 2019 14:36

Instrument :
 MSVOA_X
 ClientSampled :

| Tot Ion | Ratio | Lower | Upper |
|---------|-------|-------|--------|
| 75 | 100 | | |
| 53 | 0.2 | 78.2 | 117.4# |
| 89 | 0.0 | 36.0 | 54.0# |



Abundance Ion 74.90 (74.60 to 75.60): VX0
 Ion 53.00 (52.70 to 53.70): VX0
 Ion 88.90 (88.60 to 89.60): VX0

