

Data Path : Z:\VOASRV\HPCHEM1\MSVOA X\DATA\VX041519\
 Data File : VX008968.D
 Acq On : 15 Apr 2019 18:19
 Operator : JC/SP
 Sample : K2387-09
 Misc : 5.0mL/MSVOA X/WATER
 ALS Vial : 20 Sample Multiplier: 1

Instrument :
 MSVOA_X
 ClientSampleId :

Quant Time: Apr 16 03:24:58 2019
 Quant Method : Z:\VOASRV\HPCHEM1\MSVOA_X\METHOD\82X041519W.M
 Quant Title : SW846 8260
 QLast Update : Tue Apr 16 02:27:32 2019
 Response via : Initial Calibration

| Internal Standards | R.T. | QIon | Response | Conc | Units | Dev(Min) |
|----------------------------|-------|------|----------|-------|-------|----------|
| 1) Pentafluorobenzene | 5.67 | 168 | 267612 | 50.00 | ug/l | 0.00 |
| 34) 1,4-Difluorobenzene | 6.86 | 114 | 434242 | 50.00 | ug/l | 0.00 |
| 63) Chlorobenzene-d5 | 10.11 | 117 | 365508 | 50.00 | ug/l | 0.00 |
| 72) 1,4-Dichlorobenzene-d4 | 12.08 | 152 | 150923 | 50.00 | ug/l | 0.00 |

System Monitoring Compounds

| | | | | | | |
|---------------------------|--------|-----|----------|-------|--------|------|
| 33) 1,2-Dichloroethane-d4 | 6.06 | 65 | 176156 | 46.71 | ug/l | 0.00 |
| Spiked Amount | 50.000 | | Recovery | = | 93.42% | |
| 35) Dibromofluoromethane | 5.50 | 113 | 129456 | 46.45 | ug/l | 0.00 |
| Spiked Amount | 50.000 | | Recovery | = | 92.90% | |
| 50) Toluene-d8 | 8.71 | 98 | 527048 | 47.42 | ug/l | 0.00 |
| Spiked Amount | 50.000 | | Recovery | = | 94.84% | |
| 62) 4-Bromofluorobenzene | 11.13 | 95 | 172035 | 43.85 | ug/l | 0.00 |
| Spiked Amount | 50.000 | | Recovery | = | 87.70% | |

Target Compounds

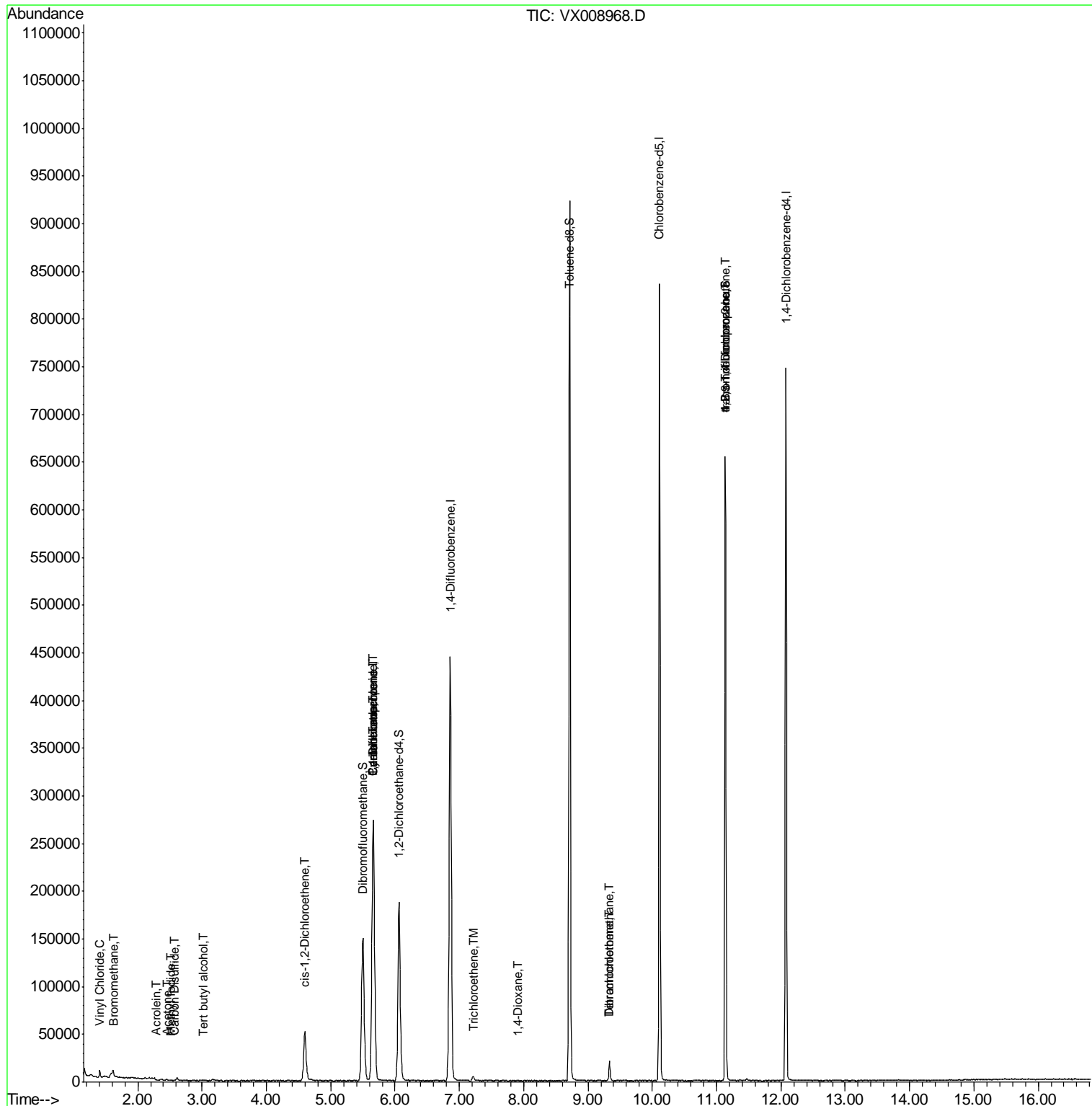
| | | | | | Qvalue | |
|--------------------------------|-------|-----|-------|-----------|--------|-----|
| 4) Vinyl Chloride | 1.41 | 62 | 4759 | 1.292 | ug/l | 100 |
| 5) Bromomethane | 1.62 | 94 | 265 | 3.954 | ug/l # | 42 |
| 10) Methyl Iodide | 2.51 | 142 | 181 | 4.469 | ug/l # | 58 |
| 11) Tert butyl alcohol | 3.01 | 59 | 457 | 0.546 | ug/l # | 72 |
| 13) Acrolein | 2.29 | 56 | 157 | 0.217 | ug/l # | 44 |
| 16) Acetone | 2.45 | 43 | 746 | 0.381 | ug/l # | 80 |
| 17) Carbon Disulfide | 2.57 | 76 | 681 | 1.331 | ug/l # | 75 |
| 27) cis-1,2-Dichloroethene | 4.60 | 96 | 31547 | 9.077 | ug/l | 89 |
| 28) Bromochloromethane | 5.01 | 49 | 86 | Below Cal | # | 21 |
| 31) Cyclohexane | 5.67 | 56 | 5939 | 0.989 | ug/l # | 1 |
| 36) 1,1-Dichloropropene | 5.66 | 75 | 20888 | 4.651 | ug/l # | 50 |
| 38) Carbon Tetrachloride | 5.66 | 117 | 25470 | 6.690 | ug/l # | 18 |
| 44) Trichloroethene | 7.21 | 130 | 1719 | 0.530 | ug/l | 86 |
| 49) 1,4-Dioxane | 7.90 | 88 | 21 | 0.244 | ug/l # | 4 |
| 60) Dibromochloromethane | 9.34 | 129 | 3377 | 1.120 | ug/l # | 10 |
| 64) Tetrachloroethene | 9.34 | 164 | 3750 | 1.351 | ug/l # | 86 |
| 76) 1,2,3-Trichloropropane | 11.13 | 75 | 86980 | 23.602 | ug/l # | 33 |
| 81) trans-1,4-Dichloro-2-buten | 11.13 | 75 | 86980 | 60.594 | ug/l # | 11 |

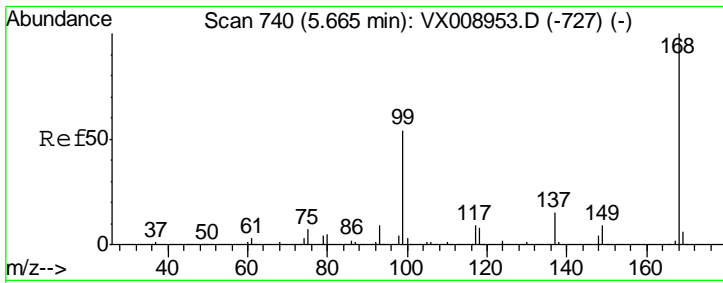
(#) = qualifier out of range (m) = manual integration (+) = signals summed

Data Path : Z:\VOASRV\HPCHEM1\MSVOA X\DATA\VX041519\
 Data File : VX008968.D
 Acq On : 15 Apr 2019 18:19
 Operator : JC/SP
 Sample : K2387-09
 Misc : 5.0mL/MSVOA X/WATER
 ALS Vial : 20 Sample Multiplier: 1

Instrument :
 MSVOA_X
 Client Sampled :

Quant Time: Apr 16 03:24:58 2019
 Quant Method : Z:\VOASRV\HPCHEM1\MSVOA_X\METHOD\82X041519W.M
 Quant Title : SW846 8260
 QLast Update : Tue Apr 16 02:27:32 2019
 Response via : Initial Calibration

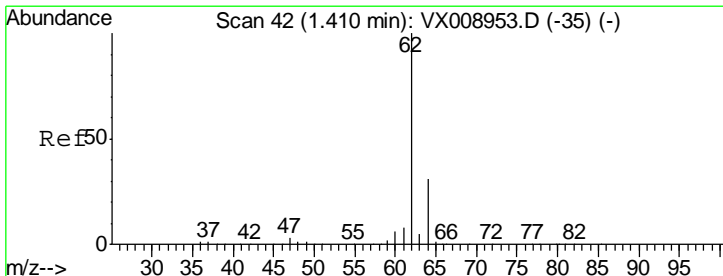
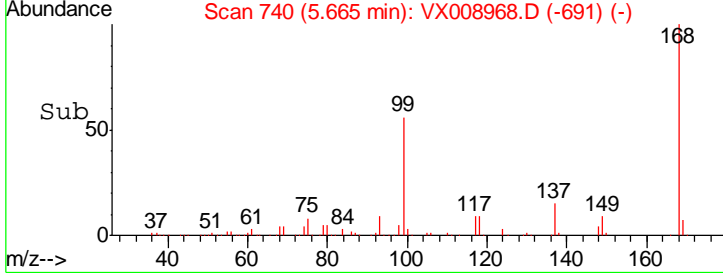
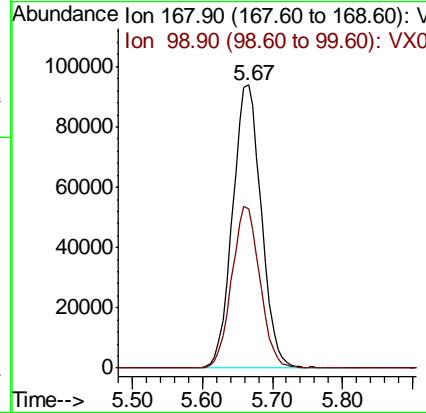
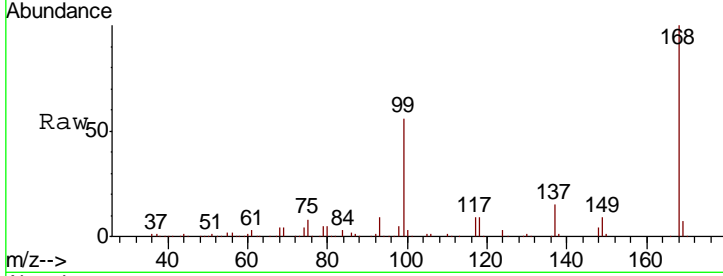




#1
 Pentafluorobenzene
 Concen: 50.000 ug/l
 RT: 5.67 min Scan# 740
 Delta R.T. -0.00 min
 Lab File: VX008968.D
 Acq: 15 Apr 2019 18:19

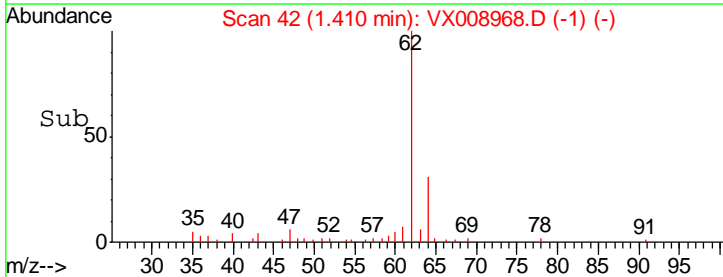
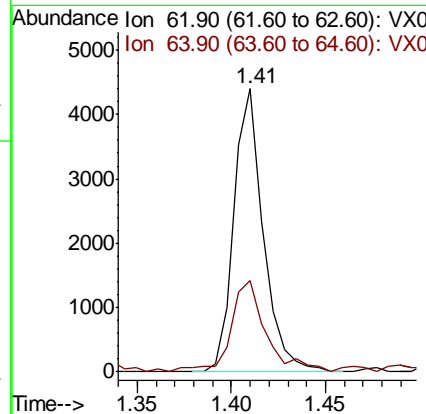
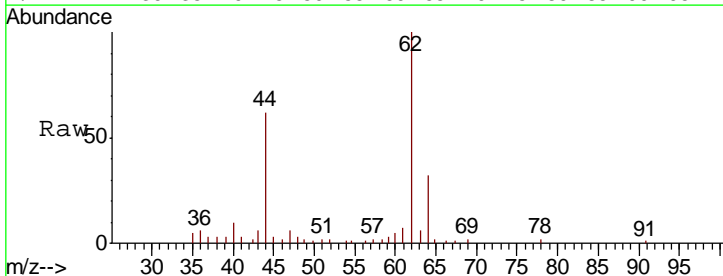
Instrument :
 MSVOA_X
 ClientSampled :

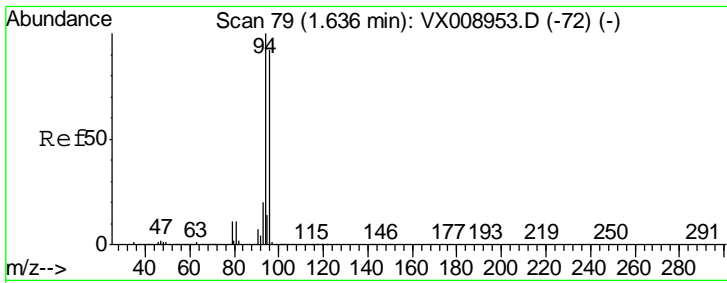
| Tgt Ion | Resp | Lower | Upper |
|---------|------|-------|-------|
| 168 | 100 | | |
| 99 | 56.4 | 43.0 | 64.6 |



#4
 Vinyl Chloride
 Concen: 1.292 ug/l
 RT: 1.41 min Scan# 42
 Delta R.T. -0.00 min
 Lab File: VX008968.D
 Acq: 15 Apr 2019 18:19

| Tgt Ion | Resp | Lower | Upper |
|---------|------|-------|-------|
| 62 | 100 | | |
| 64 | 30.9 | 25.0 | 37.4 |

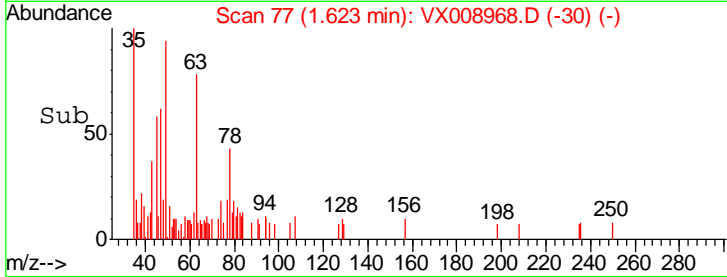
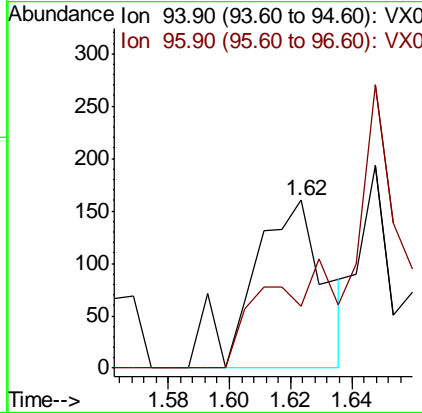
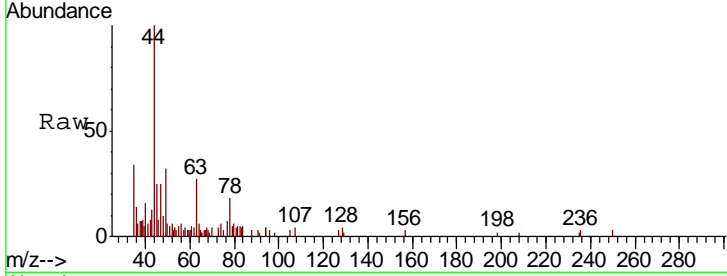




#5
 Bromomethane
 Concen: 3.954 ug/l
 RT: 1.62 min Scan# 77
 Delta R.T. -0.01 min
 Lab File: VX008968.D
 Acq: 15 Apr 2019 18:19

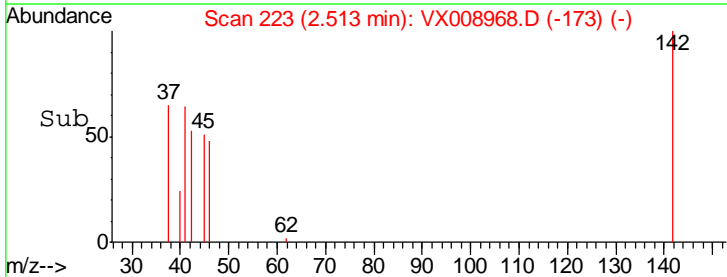
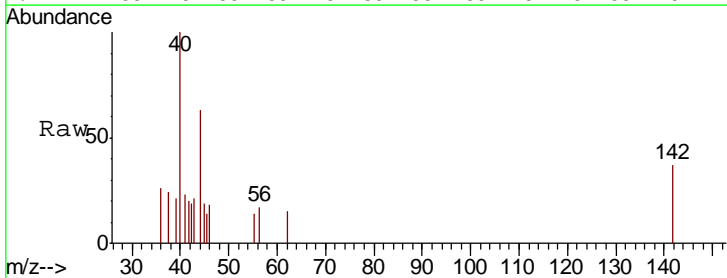
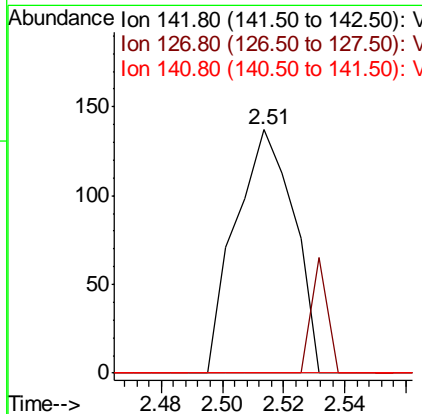
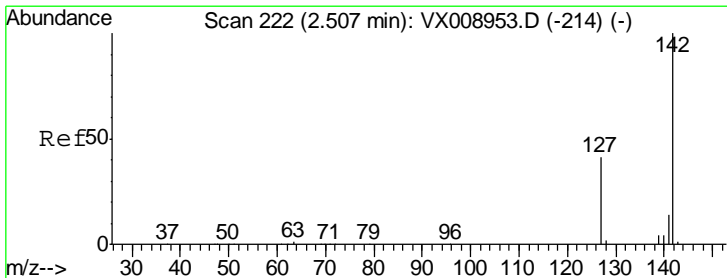
Instrument :
 MSVOA_X
 ClientSampled :

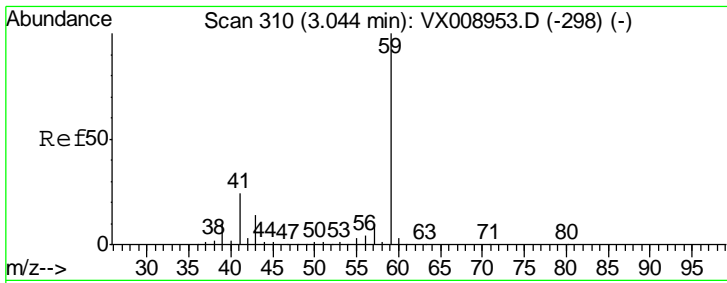
| Tgt Ion | Resp | Lower | Upper |
|---------|------|-------|--------|
| 94 | 100 | | |
| 96 | 36.9 | 73.9 | 110.9# |



#10
 Methyl Iodide
 Concen: 4.469 ug/l
 RT: 2.51 min Scan# 223
 Delta R.T. 0.01 min
 Lab File: VX008968.D
 Acq: 15 Apr 2019 18:19

| Tgt Ion | Resp | Lower | Upper |
|---------|------|-------|-------|
| 142 | 100 | | |
| 127 | 13.3 | 32.8 | 49.2# |
| 141 | 0.0 | 11.4 | 17.2# |

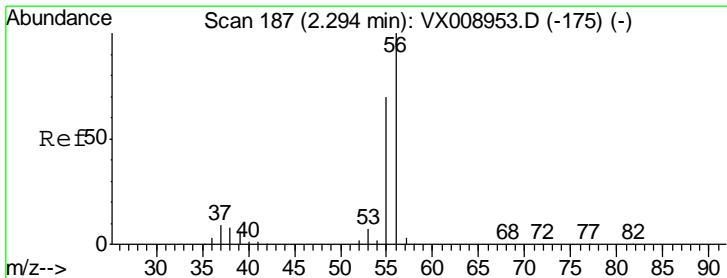
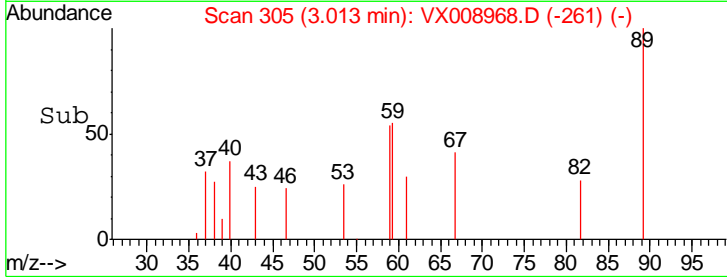
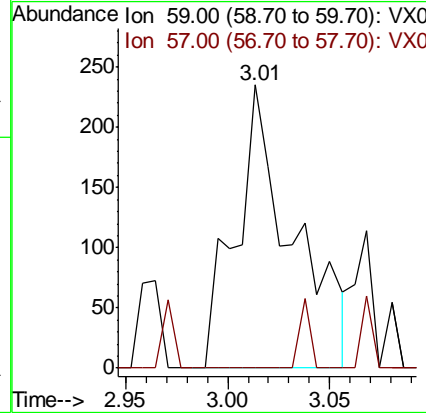
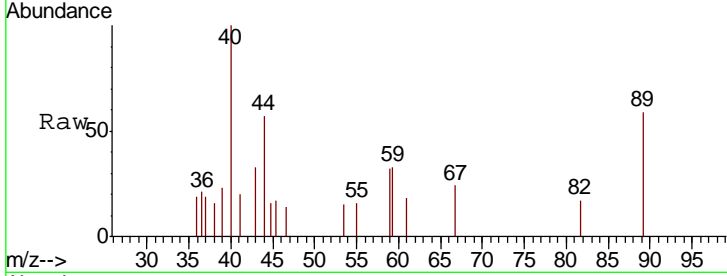




#11
 Tert butyl alcohol
 Concen: 0.546 ug/l
 RT: 3.01 min Scan# 305
 Delta R.T. -0.03 min
 Lab File: VX008968.D
 Acq: 15 Apr 2019 18:19

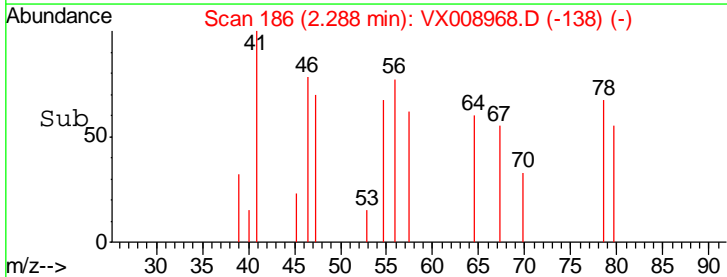
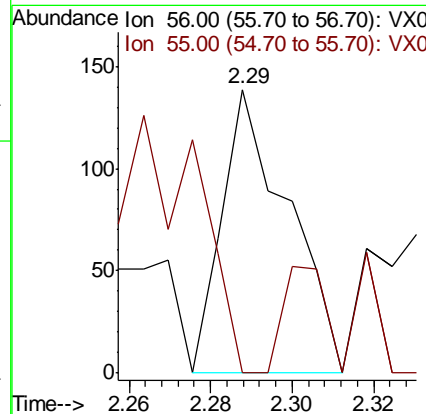
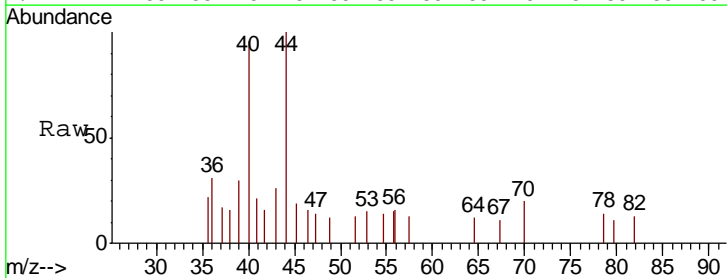
Instrument : MSVOA_X
 ClientSampled :

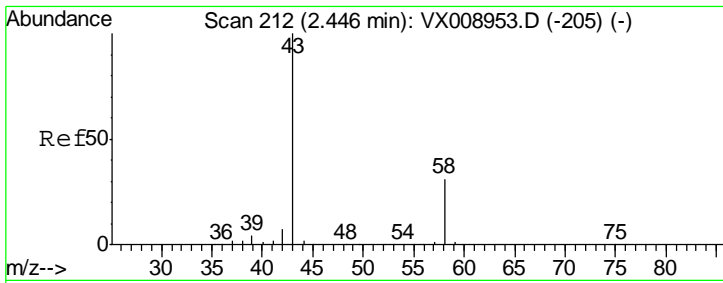
Tgt Ion: 59 Resp: 457
 Ion Ratio Lower Upper
 59 100
 57 0.0 8.4 12.6#



#13
 Acrolein
 Concen: 0.217 ug/l
 RT: 2.29 min Scan# 186
 Delta R.T. -0.01 min
 Lab File: VX008968.D
 Acq: 15 Apr 2019 18:19

Tgt Ion: 56 Resp: 157
 Ion Ratio Lower Upper
 56 100
 55 24.2 56.6 84.8#

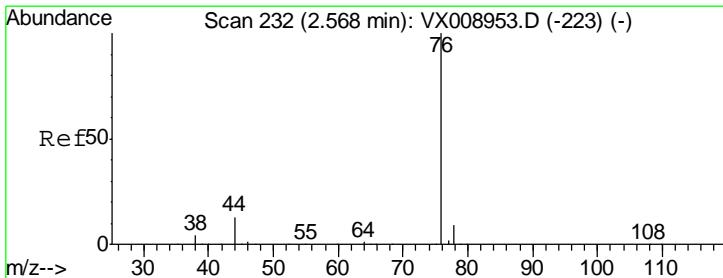
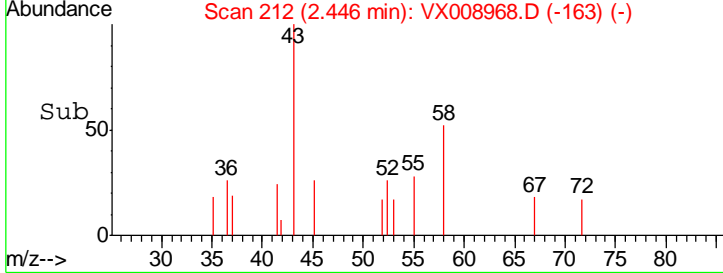
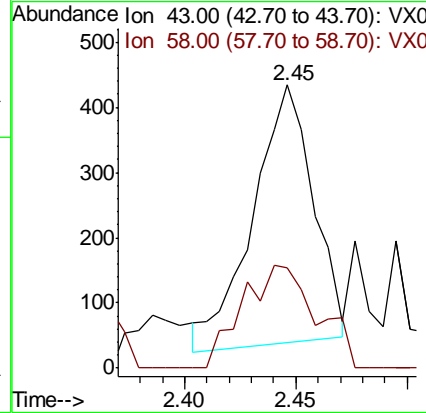
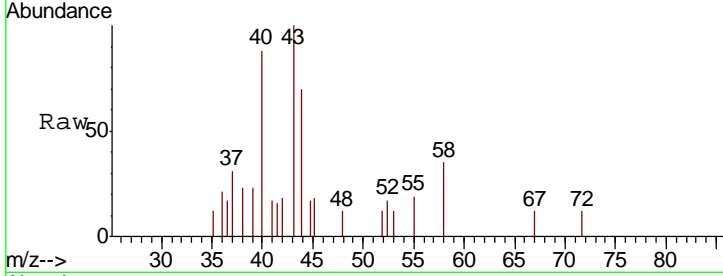




#16
 Acetone
 Concen: 0.381 ug/l
 RT: 2.45 min Scan# 212
 Delta R.T. -0.00 min
 Lab File: VX008968.D
 Acq: 15 Apr 2019 18:19

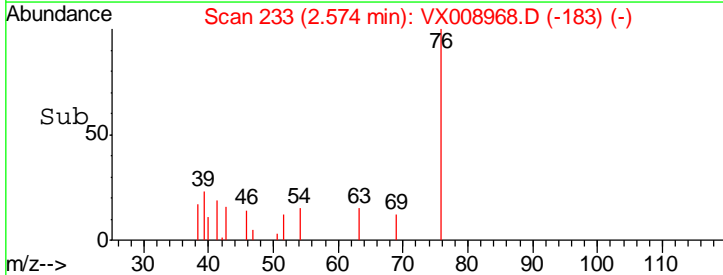
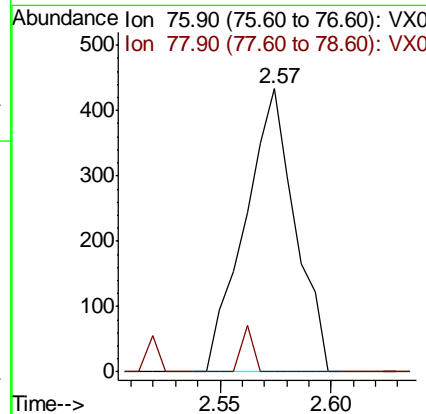
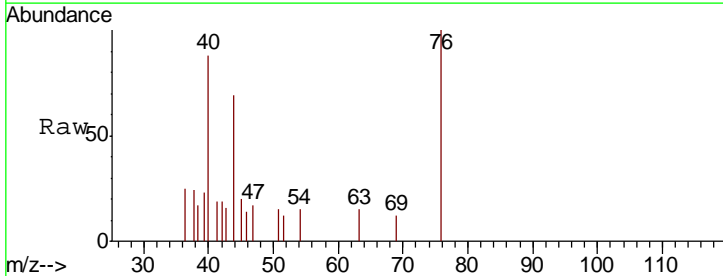
Instrument :
 MSVOA_X
 ClientSampled :

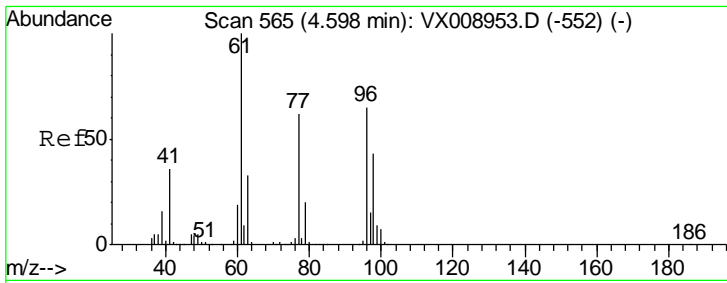
| Tgt Ion | Resp | Lower | Upper |
|---------|------|-------|-------|
| 43 | 100 | | |
| 58 | 41.9 | 24.8 | 37.2# |



#17
 Carbon Disulfide
 Concen: 1.331 ug/l
 RT: 2.57 min Scan# 233
 Delta R.T. 0.01 min
 Lab File: VX008968.D
 Acq: 15 Apr 2019 18:19

| Tgt Ion | Resp | Lower | Upper |
|---------|------|-------|-------|
| 76 | 100 | | |
| 78 | 0.0 | 7.2 | 10.8# |

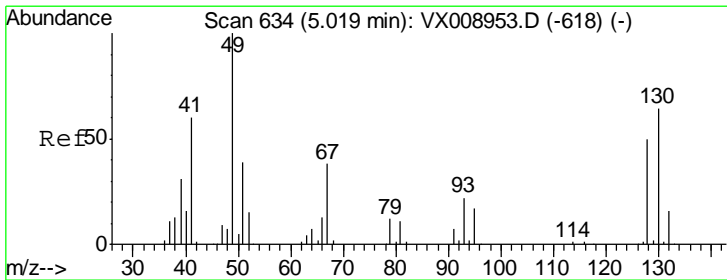
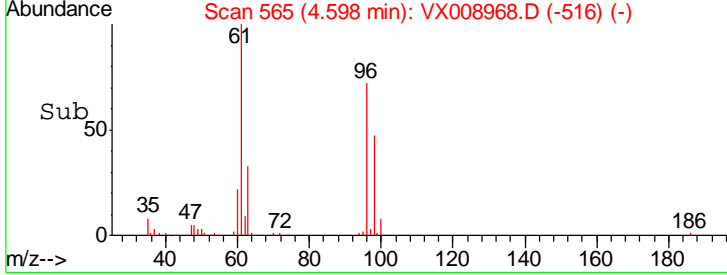
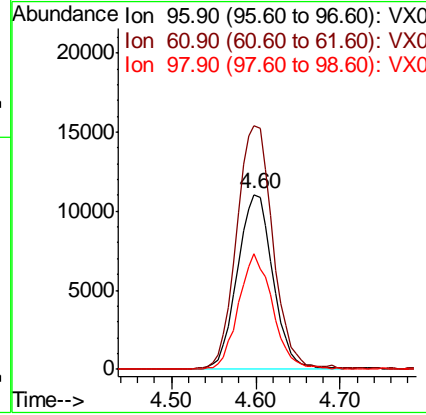
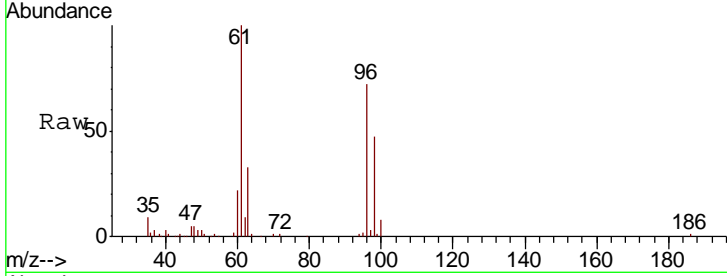




#27
 cis-1,2-Dichloroethene
 Concen: 9.077 ug/l
 RT: 4.60 min Scan# 565
 Delta R.T. -0.00 min
 Lab File: VX008968.D
 Acq: 15 Apr 2019 18:19

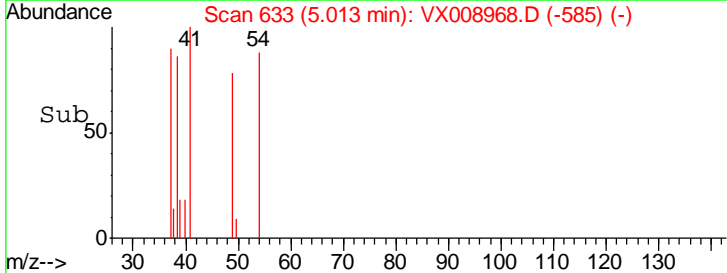
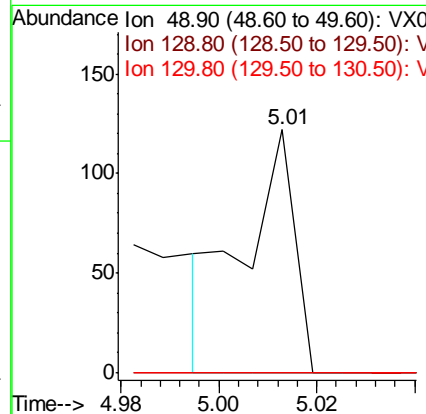
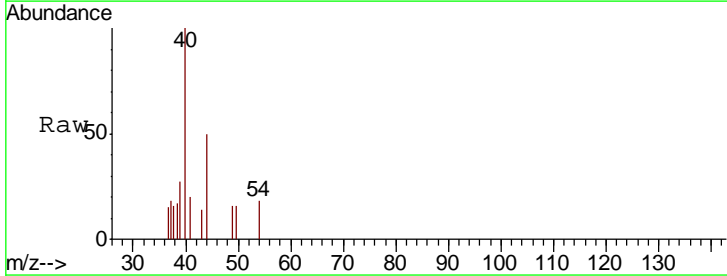
Instrument :
 MSVOA_X
 ClientSampled :

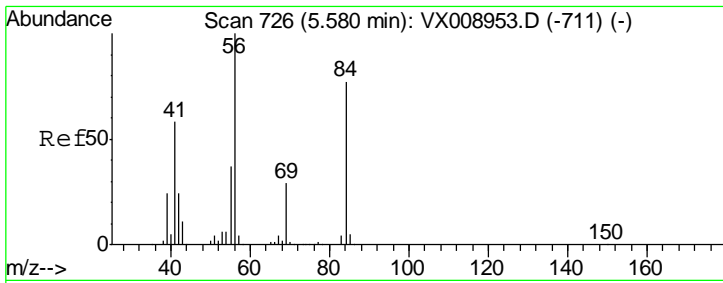
| Tgt Ion | Resp | Lower | Upper |
|---------|-------|-------|-------|
| 96 | 31547 | | |
| 61 | 141.6 | 0.0 | 322.0 |
| 98 | 63.3 | 0.0 | 128.4 |



#28
 Bromochloromethane
 Concen: Below Cal
 RT: 5.01 min Scan# 633
 Delta R.T. -0.01 min
 Lab File: VX008968.D
 Acq: 15 Apr 2019 18:19

| Tgt Ion | Resp | Lower | Upper |
|---------|------|-------|-------|
| 49 | 86 | | |
| 129 | 0.0 | 0.0 | 3.6 |
| 130 | 0.0 | 50.4 | 75.6# |

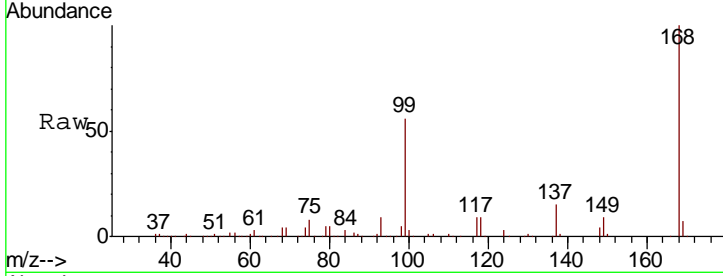




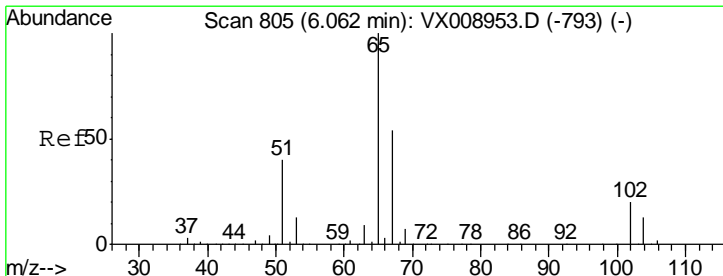
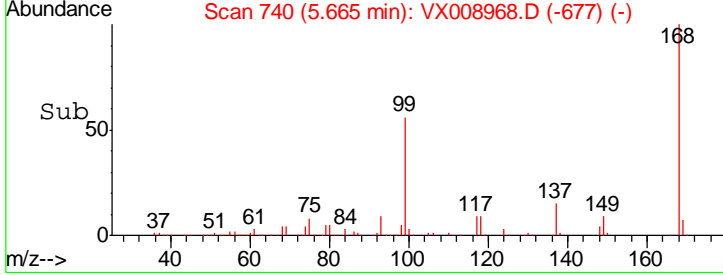
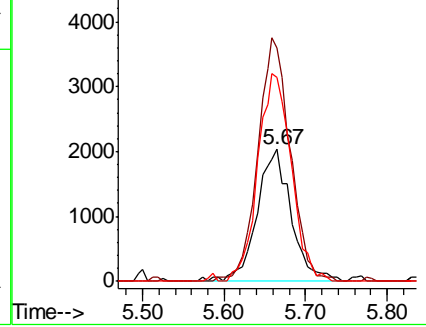
#31
 Cyclohexane
 Concen: 0.989 ug/l
 RT: 5.67 min Scan# 740
 Delta R.T. 0.09 min
 Lab File: VX008968.D
 Acq: 15 Apr 2019 18:19

Instrument :
 MSVOA_X
 ClientSampled :

| Tgt Ion | Resp | Lower | Upper |
|---------|-------|-------|-------|
| 56 | 100 | | |
| 69 | 176.7 | 23.3 | 34.9# |
| 84 | 154.7 | 61.7 | 92.5# |

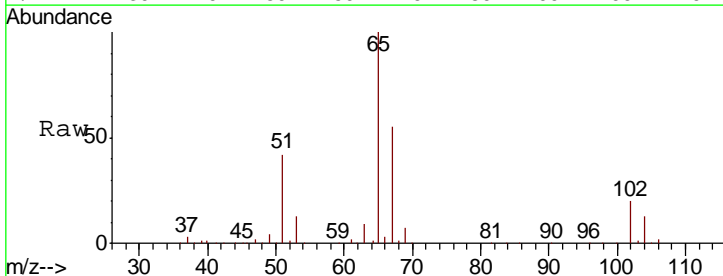


Abundance Ion 56.00 (55.70 to 56.70): VX0
 Ion 69.00 (68.70 to 69.70): VX0
 Ion 84.00 (83.70 to 84.70): VX0

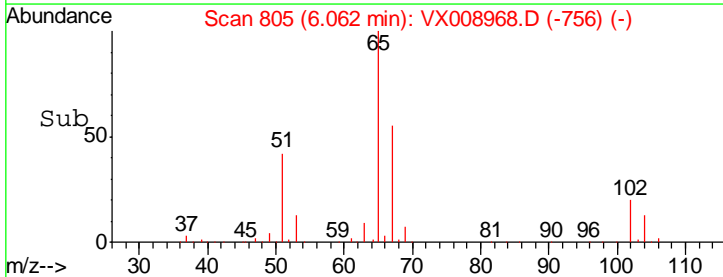
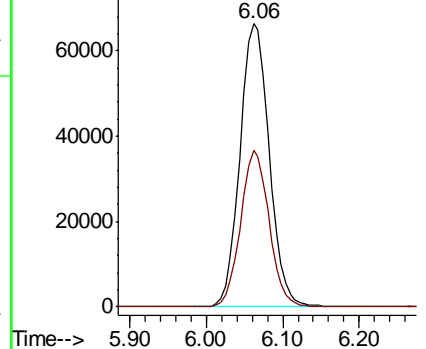


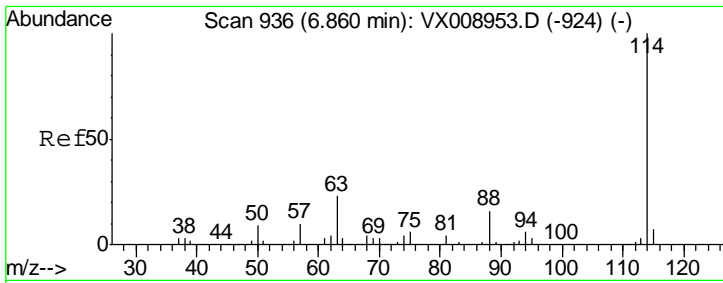
#33
 1,2-Dichloroethane-d4
 Concen: 46.708 ug/l
 RT: 6.06 min Scan# 805
 Delta R.T. -0.00 min
 Lab File: VX008968.D
 Acq: 15 Apr 2019 18:19

| Tgt Ion | Resp | Lower | Upper |
|---------|------|-------|-------|
| 65 | 100 | | |
| 67 | 53.9 | 0.0 | 108.6 |



Abundance Ion 64.90 (64.60 to 65.60): VX0
 Ion 66.90 (66.60 to 67.60): VX0

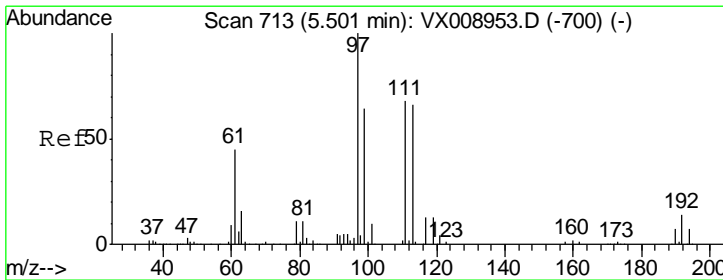
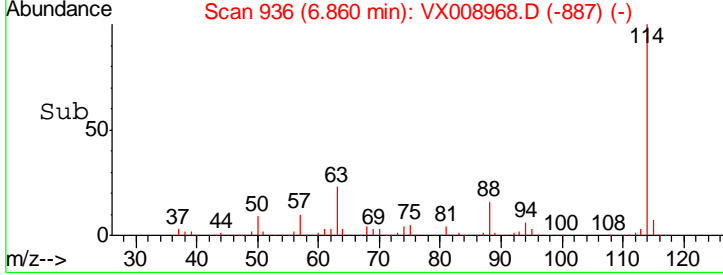
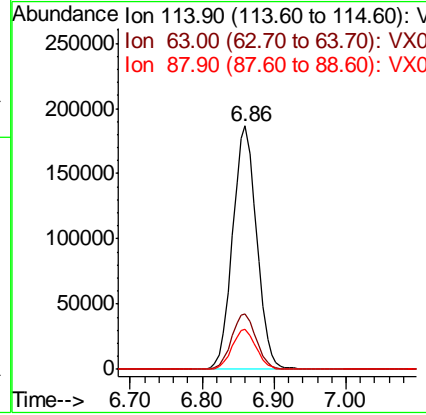
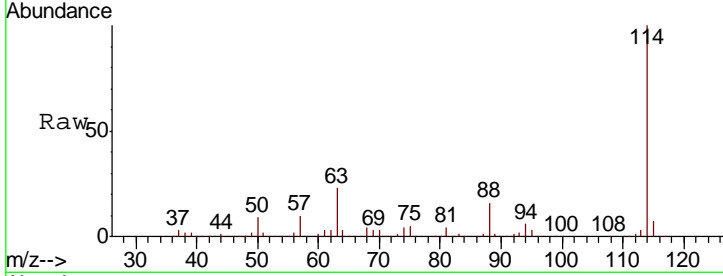




#34
 1,4-Difluorobenzene
 Concen: 50.000 ug/l
 RT: 6.86 min Scan# 936
 Delta R.T. -0.00 min
 Lab File: VX008968.D
 Acq: 15 Apr 2019 18:19

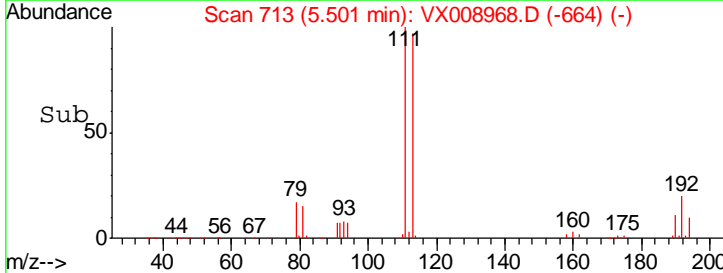
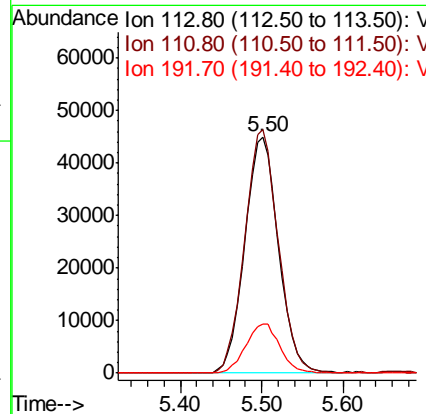
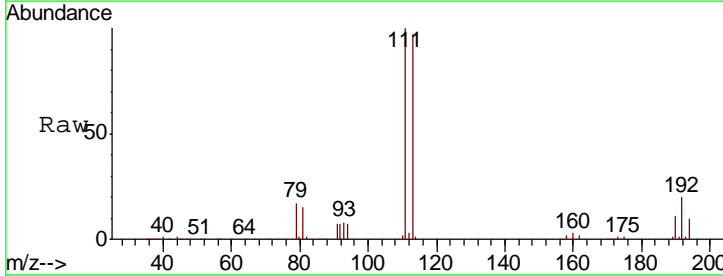
Instrument :
 MSVOA_X
 ClientSampled :

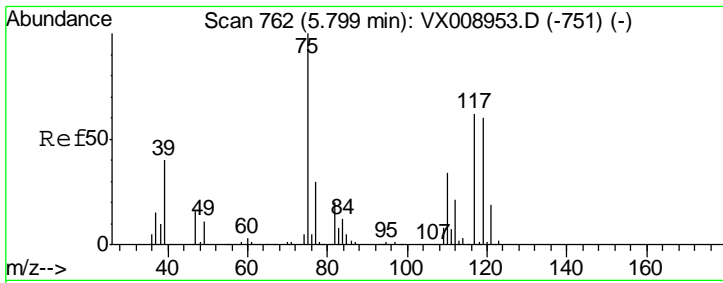
| Tgt Ion | Resp | Lower | Upper |
|---------|--------|-------|-------|
| 114 | 434242 | | |
| 63 | 22.7 | 0.0 | 46.0 |
| 88 | 16.3 | 0.0 | 32.6 |



#35
 Dibromofluoromethane
 Concen: 46.452 ug/l
 RT: 5.50 min Scan# 713
 Delta R.T. -0.00 min
 Lab File: VX008968.D
 Acq: 15 Apr 2019 18:19

| Tgt Ion | Resp | Lower | Upper |
|---------|--------|-------|-------|
| 113 | 129456 | | |
| 111 | 102.3 | 82.9 | 124.3 |
| 192 | 21.1 | 17.4 | 26.0 |

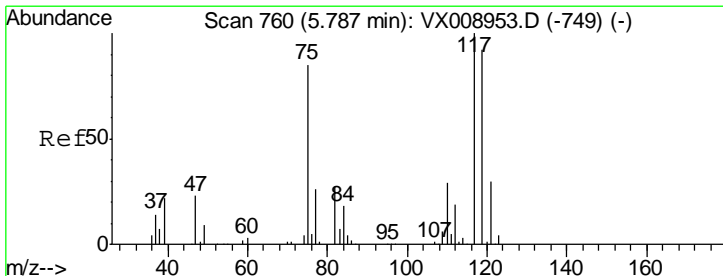
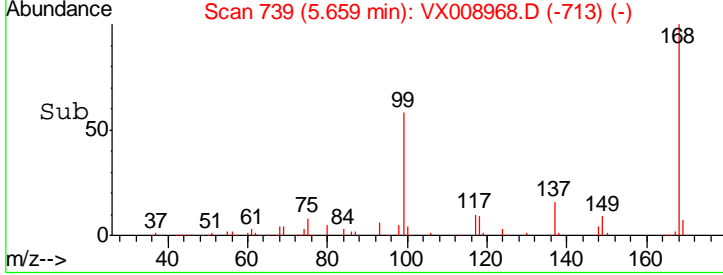
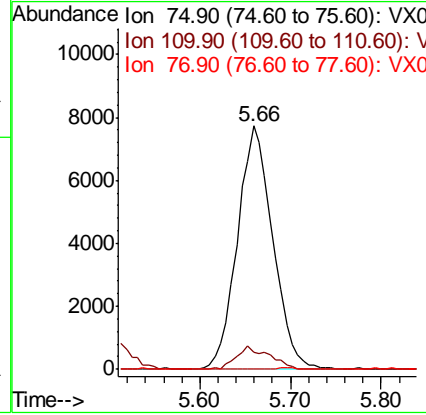
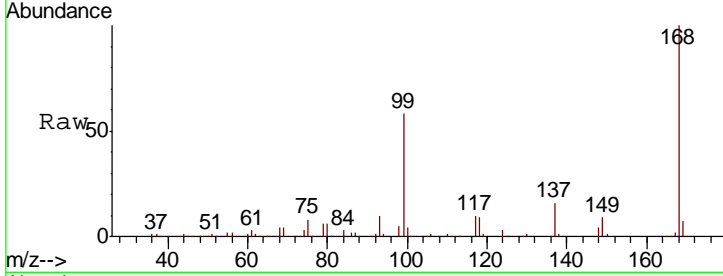




#36
 1,1-Dichloropropene
 Concen: 4.651 ug/l
 RT: 5.66 min Scan# 739
 Delta R.T. -0.14 min
 Lab File: VX008968.D
 Acq: 15 Apr 2019 18:19

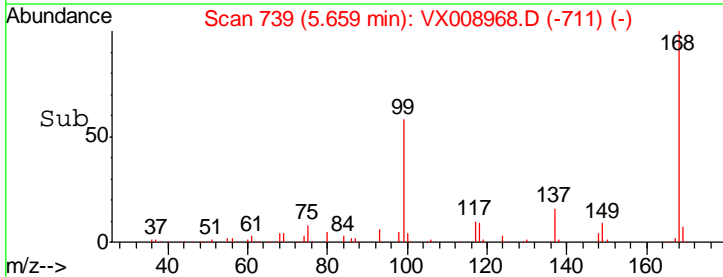
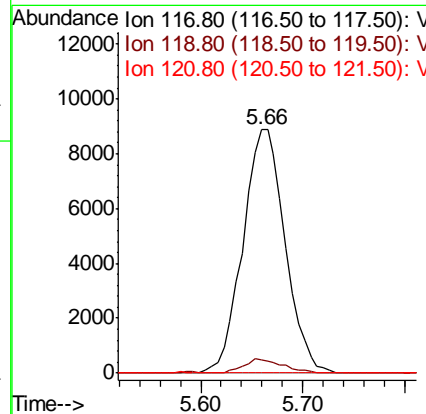
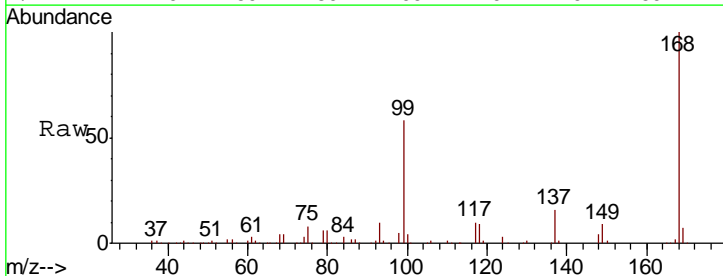
Instrument : MSVOA_X
 ClientSampled :

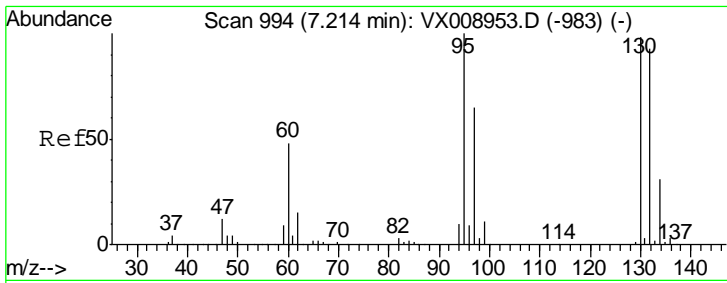
| Tgt Ion | Resp | Lower | Upper |
|---------|------|-------|-------|
| 75 | 100 | | |
| 110 | 8.8 | 16.9 | 50.7# |
| 77 | 0.0 | 25.0 | 37.4# |



#38
 Carbon Tetrachloride
 Concen: 6.690 ug/l
 RT: 5.66 min Scan# 739
 Delta R.T. -0.13 min
 Lab File: VX008968.D
 Acq: 15 Apr 2019 18:19

| Tgt Ion | Resp | Lower | Upper |
|---------|------|-------|--------|
| 117 | 100 | | |
| 119 | 5.3 | 73.8 | 110.8# |
| 121 | 0.0 | 23.6 | 35.4# |

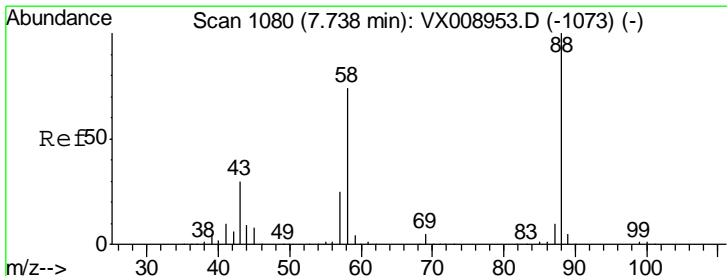
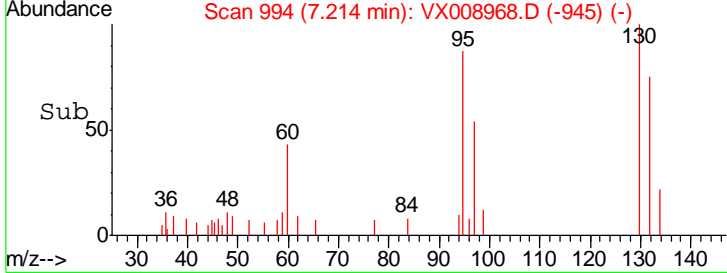
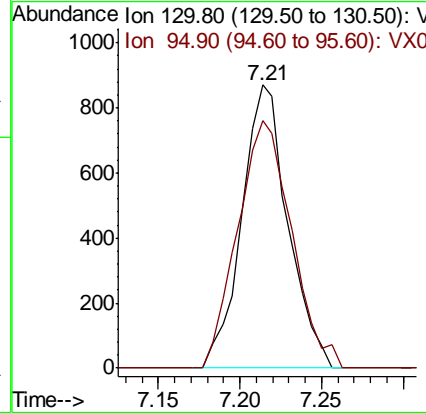
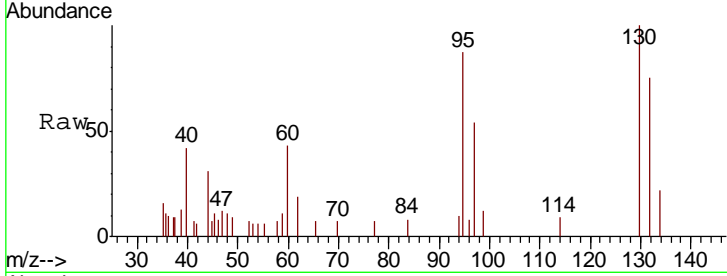




#44
 Trichloroethene
 Concen: 0.530 ug/l
 RT: 7.21 min Scan# 994
 Delta R.T. -0.00 min
 Lab File: VX008968.D
 Acq: 15 Apr 2019 18:19

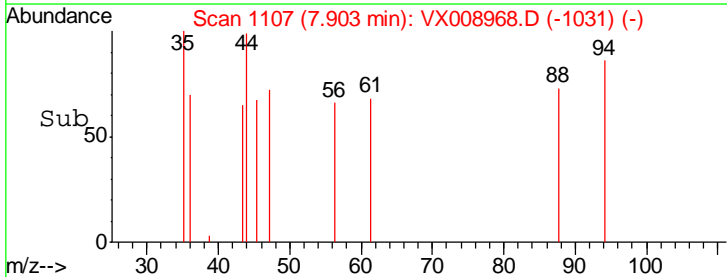
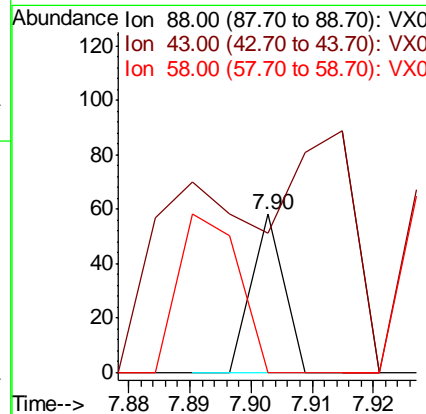
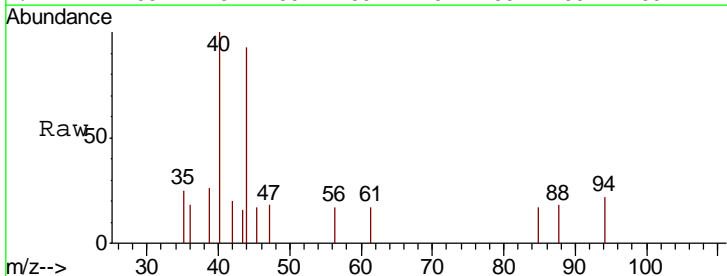
Instrument :
 MSVOA_X
 ClientSampled :

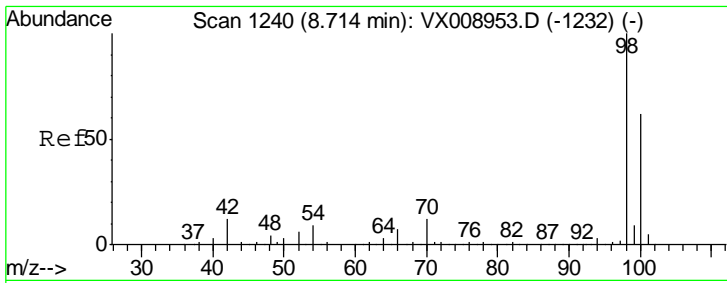
| Tgt Ion | Resp | Lower | Upper |
|---------|------|-------|-------|
| 130 | 1719 | | |
| 130 | 100 | | |
| 95 | 87.4 | 0.0 | 203.2 |



#49
 1,4-Dioxane
 Concen: 0.244 ug/l
 RT: 7.90 min Scan# 1107
 Delta R.T. 0.16 min
 Lab File: VX008968.D
 Acq: 15 Apr 2019 18:19

| Tgt Ion | Resp | Lower | Upper |
|---------|-------|-------|-------|
| 88 | 21 | | |
| 88 | 100 | | |
| 43 | 52.4 | 29.3 | 43.9# |
| 58 | 190.5 | 62.6 | 93.8# |

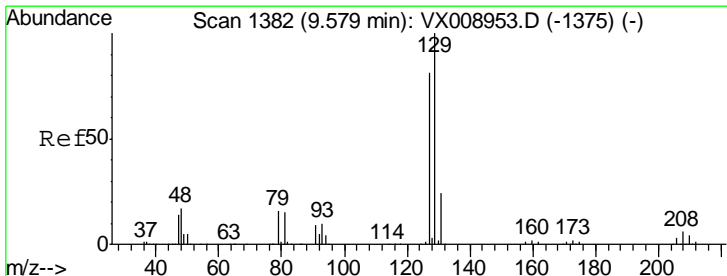
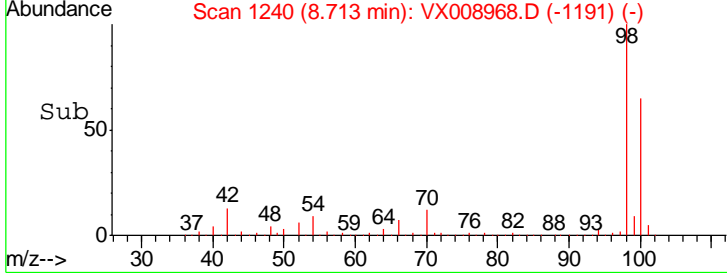
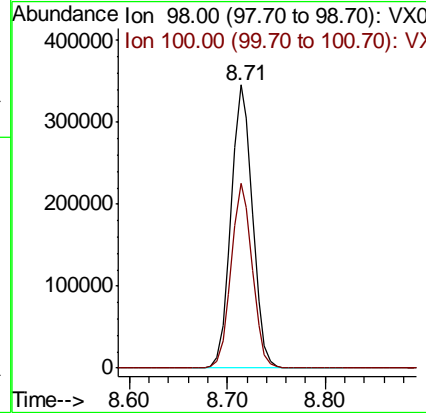
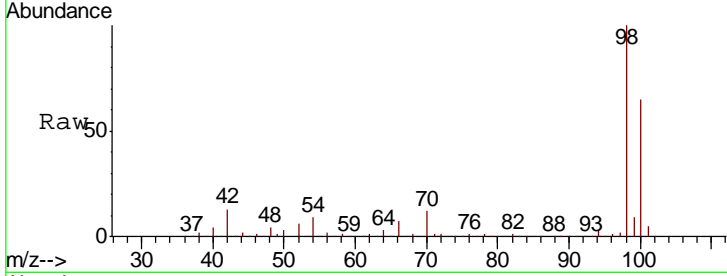




#50
 Toluene-d8
 Concen: 47.421 ug/l
 RT: 8.71 min Scan# 1240
 Delta R.T. -0.00 min
 Lab File: VX008968.D
 Acq: 15 Apr 2019 18:19

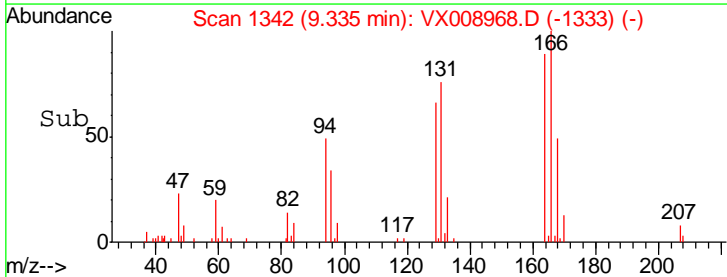
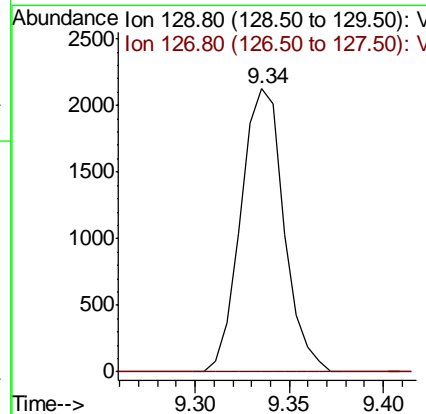
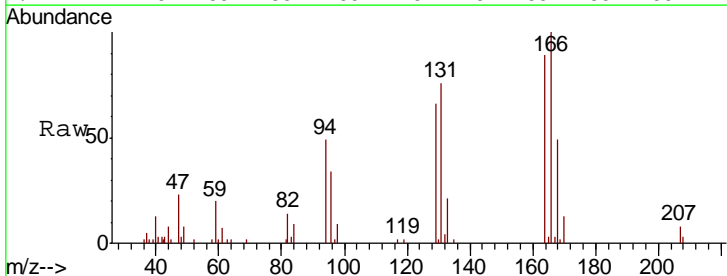
Instrument :
 MSVOA_X
 ClientSampled :

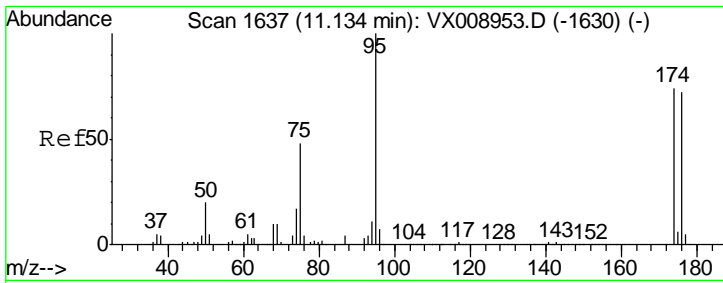
Tot Ion: 98 Resp: 527048
 Ion Ratio Lower Upper
 98 100
 100 64.5 51.4 77.2



#60
 Dibromochloromethane
 Concen: 1.120 ug/l
 RT: 9.34 min Scan# 1342
 Delta R.T. -0.24 min
 Lab File: VX008968.D
 Acq: 15 Apr 2019 18:19

Tgt Ion: 129 Resp: 3377
 Ion Ratio Lower Upper
 129 100
 127 0.0 39.1 117.2#

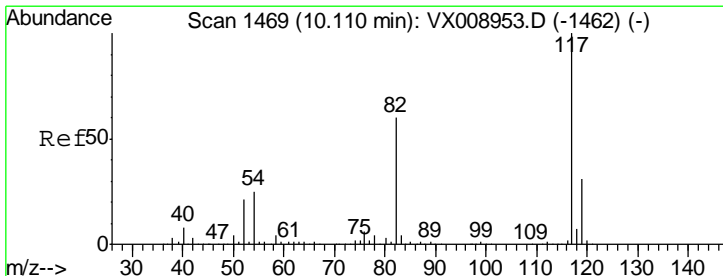
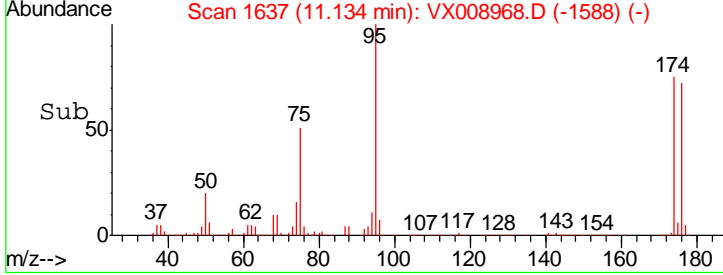
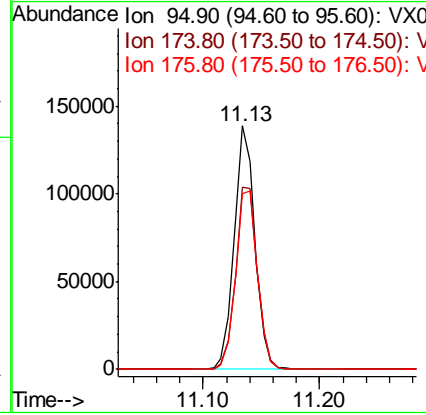
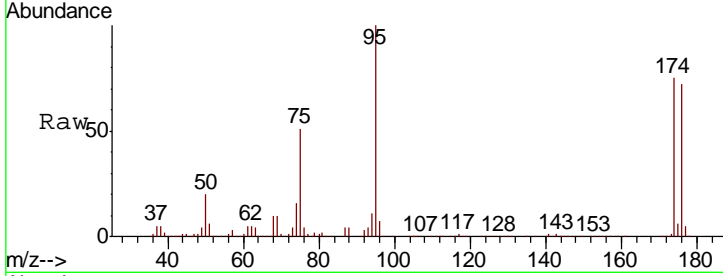




#62
 4-Bromofluorobenzene
 Concen: 43.849 ug/l
 RT: 11.13 min Scan# 1637
 Delta R.T. -0.00 min
 Lab File: VX008968.D
 Acq: 15 Apr 2019 18:19

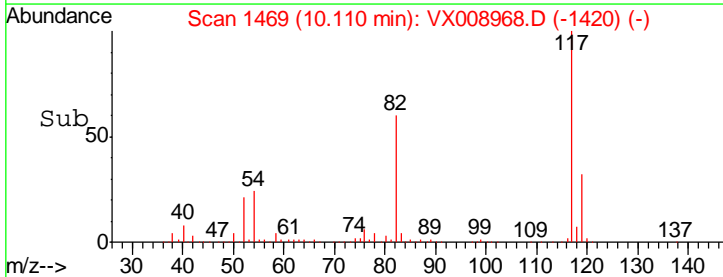
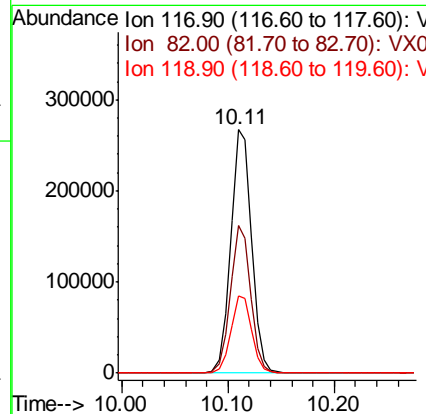
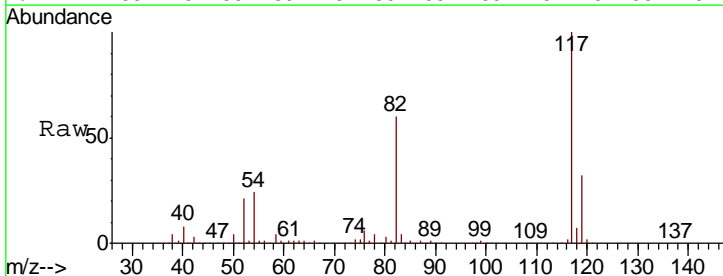
Instrument :
 MSVOA_X
 ClientSampled :

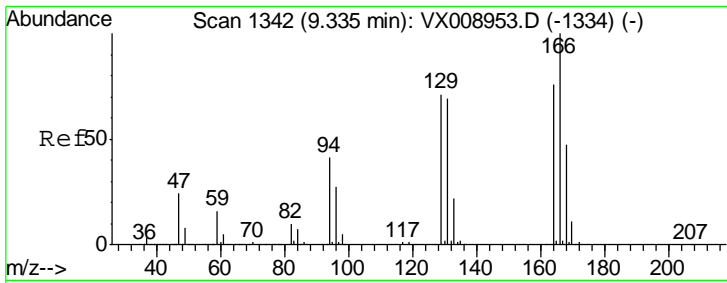
| Tgt Ion | Resp | Lower | Upper |
|---------|--------|-------|-------|
| 95 | 172035 | | |
| 174 | 78.7 | 0.0 | 159.6 |
| 176 | 77.2 | 0.0 | 154.8 |



#63
 Chlorobenzene-d5
 Concen: 50.000 ug/l
 RT: 10.11 min Scan# 1469
 Delta R.T. -0.00 min
 Lab File: VX008968.D
 Acq: 15 Apr 2019 18:19

| Tgt Ion | Resp | Lower | Upper |
|---------|--------|-------|-------|
| 117 | 365508 | | |
| 82 | 60.4 | 48.2 | 72.4 |
| 119 | 31.7 | 25.0 | 37.6 |

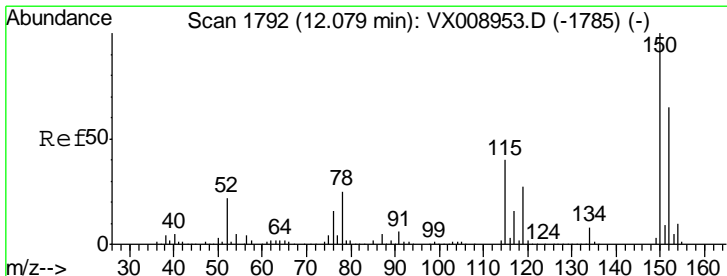
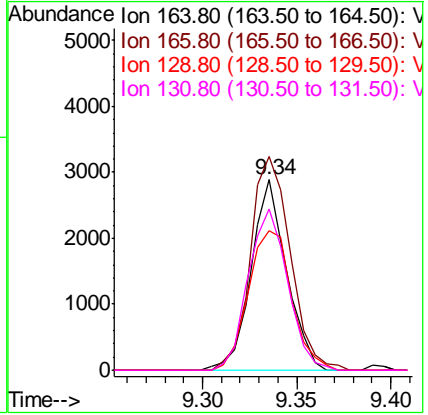
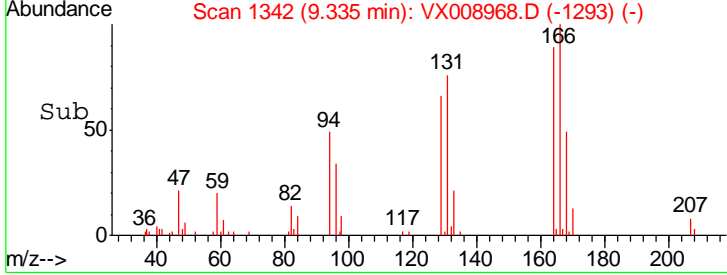
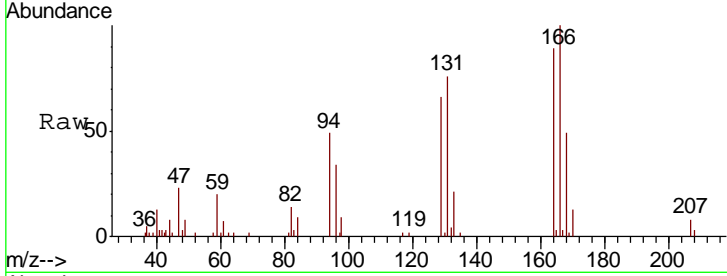




#64
 Tetrachloroethene
 Concen: 1.351 ug/l
 RT: 9.34 min Scan# 1342
 Delta R.T. -0.00 min
 Lab File: VX008968.D
 Acq: 15 Apr 2019 18:19

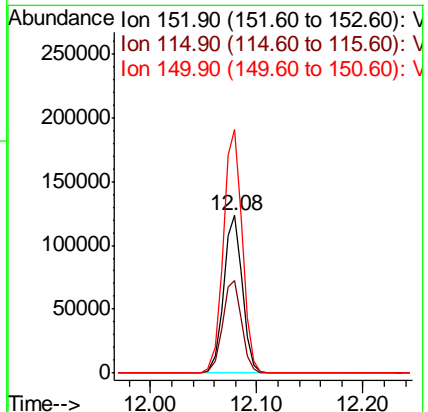
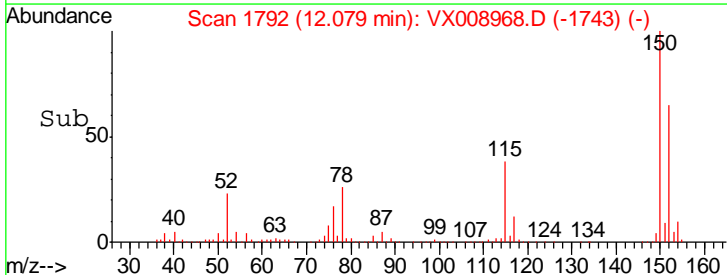
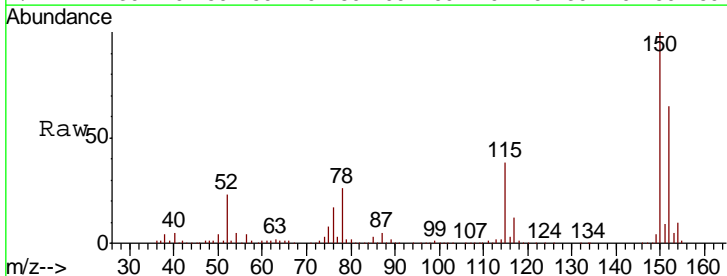
Instrument :
 MSVOA_X
 ClientSampled :

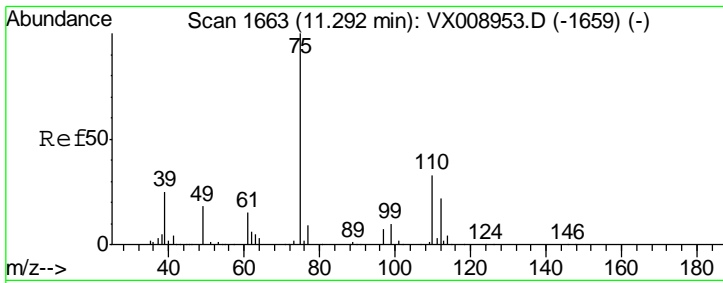
| Tgt Ion | Resp | Lower | Upper |
|---------|-------|-------|--------|
| 164 | 100 | | |
| 166 | 112.3 | 105.0 | 157.4 |
| 129 | 73.7 | 74.2 | 111.4# |
| 131 | 84.9 | 72.2 | 108.2 |



#72
 1,4-Dichlorobenzene-d4
 Concen: 50.000 ug/l
 RT: 12.08 min Scan# 1792
 Delta R.T. -0.00 min
 Lab File: VX008968.D
 Acq: 15 Apr 2019 18:19

| Tgt Ion | Resp | Lower | Upper |
|---------|-------|-------|-------|
| 152 | 100 | | |
| 115 | 59.7 | 41.4 | 124.2 |
| 150 | 157.2 | 0.0 | 349.8 |

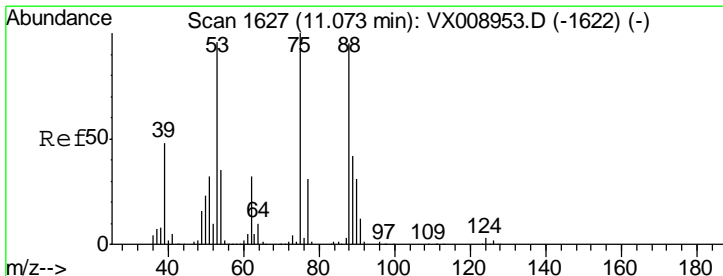
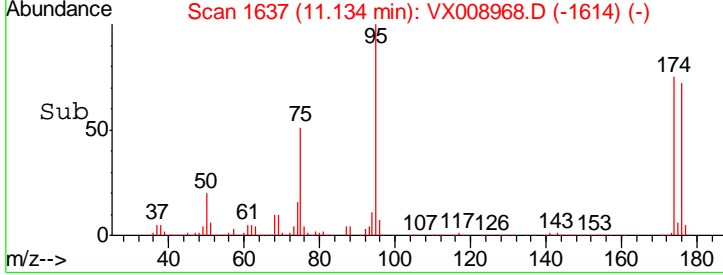
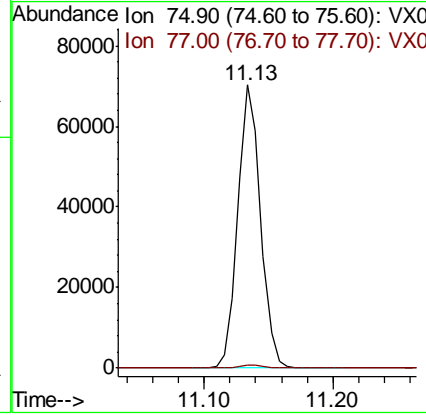
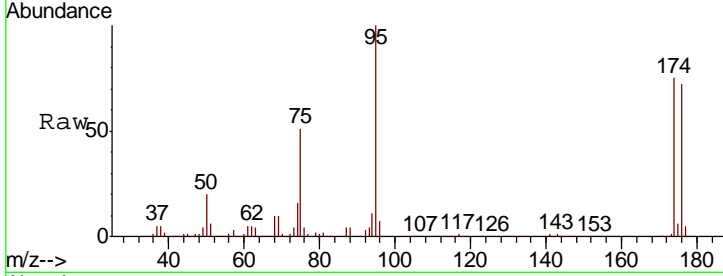




#76
 1,2,3-Trichloropropane
 Concen: 23.602 ug/l
 RT: 11.13 min Scan# 1637
 Delta R.T. -0.16 min
 Lab File: VX008968.D
 Acq: 15 Apr 2019 18:19

Instrument :
 MSVOA_X
 ClientSampled :

Tgt Ion: 75 Resp: 86980
 Ion Ratio Lower Upper
 75 100
 77 1.1 22.7 68.0#



#81
 trans-1,4-Dichloro-2-butene
 Concen: 60.594 ug/l
 RT: 11.13 min Scan# 1637
 Delta R.T. 0.06 min
 Lab File: VX008968.D
 Acq: 15 Apr 2019 18:19

Tgt Ion: 75 Resp: 86980
 Ion Ratio Lower Upper
 75 100
 53 0.2 78.2 117.4#
 89 0.0 36.0 54.0#

