

Data Path : Z:\VOASRV\HPCHEM1\MSVOA X\DATA\VX041520\  
 Data File : VX015691.D  
 Acq On : 15 Apr 2020 18:16  
 Operator : JC/SP  
 Sample : L2233-08  
 Misc : 5.0mL/MSVOA X/WATER  
 ALS Vial : 19 Sample Multiplier: 1

Instrument :  
 MSVOA\_X  
 ClientSampleId :  
 SS037MW307-200409

Quant Time: Apr 16 05:57:05 2020  
 Quant Method : Z:\VOASRV\HPCHEM1\MSVOA\_X\METHOD\82X032720W.M  
 Quant Title : SW846 8260  
 QLast Update : Fri Mar 27 09:35:51 2020  
 Response via : Initial Calibration

Internal Standards	R.T.	QIon	Response	Conc	Units	Dev(Min)
1) Pentafluorobenzene	5.64	168	1063998	50.00	ug/l	0.00
34) 1,4-Difluorobenzene	6.84	114	1685871	50.00	ug/l	0.00
63) Chlorobenzene-d5	10.10	117	1596574	50.00	ug/l	0.00
72) 1,4-Dichlorobenzene-d4	12.06	152	896460	50.00	ug/l	0.00

## System Monitoring Compounds

33) 1,2-Dichloroethane-d4	6.04	65	666392	44.41	ug/l	0.00
Spiked Amount	50.000		Recovery	=	88.82%	
35) Dibromofluoromethane	5.47	113	502870	46.66	ug/l	0.00
Spiked Amount	50.000		Recovery	=	93.32%	
50) Toluene-d8	8.70	98	2022492	50.97	ug/l	0.00
Spiked Amount	50.000		Recovery	=	101.94%	
62) 4-Bromofluorobenzene	11.12	95	839278	52.05	ug/l	0.00
Spiked Amount	50.000		Recovery	=	104.10%	

## Target Compounds

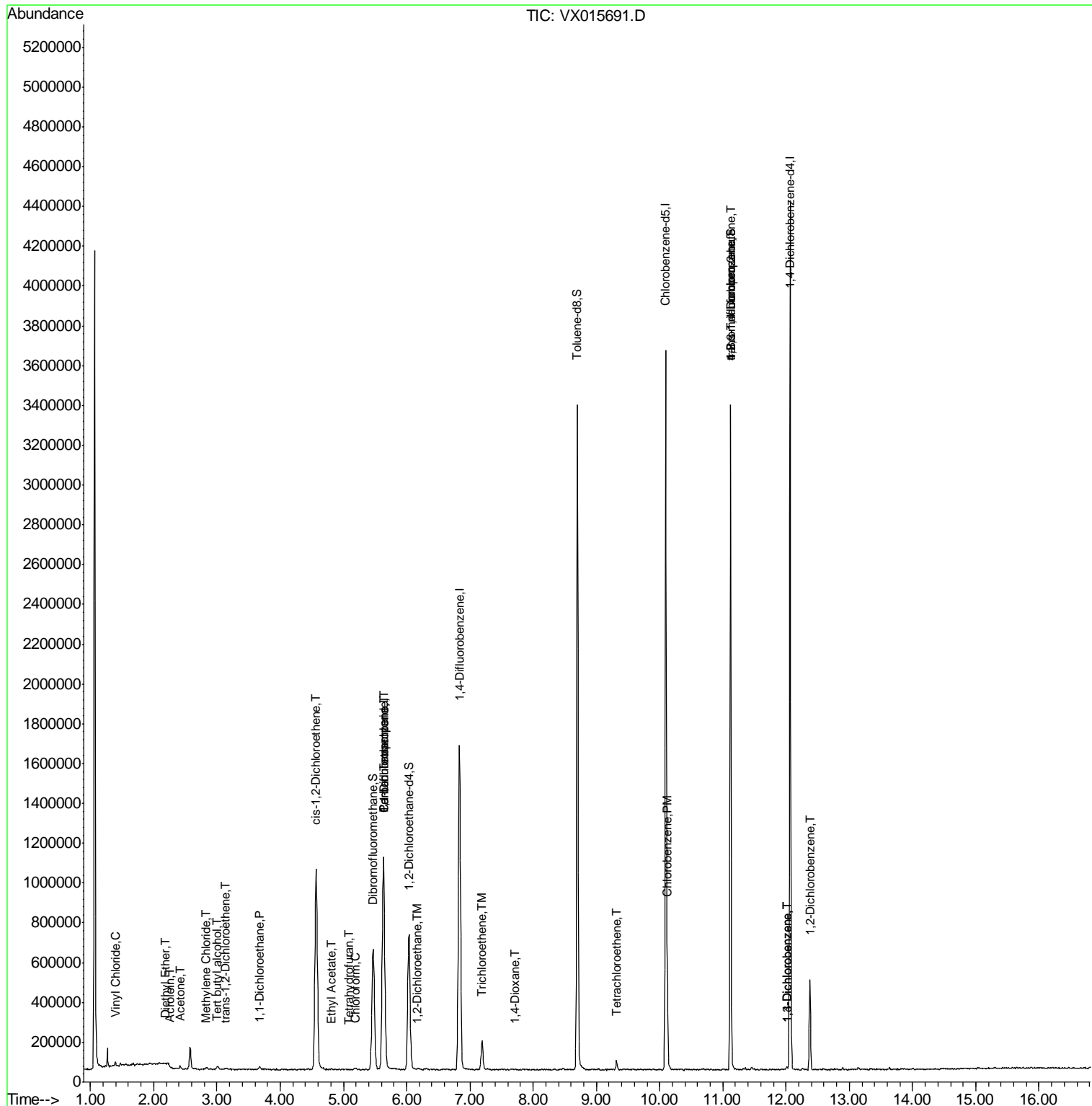
					Qvalue	
4) Vinyl Chloride	1.39	62	11716	1.069	ug/l	# 85
5) Bromomethane	1.64	94	1551	Below	Cal	# 32
8) Diethyl Ether	2.19	74	1419	0.229	ug/l	49
11) Tert butyl alcohol	3.00	59	19928	5.548	ug/l	# 92
13) Acrolein	2.26	56	796	0.389	ug/l	# 14
16) Acetone	2.42	43	18767	2.911	ug/l	# 87
20) Methylene Chloride	2.84	84	4618	0.383	ug/l	# 86
21) trans-1,2-Dichloroethene	3.14	96	3507	0.315	ug/l	85
24) 1,1-Dichloroethane	3.67	63	16848	0.769	ug/l	98
27) cis-1,2-Dichloroethene	4.57	96	643169	49.866	ug/l	88
29) Tetrahydrofuran	5.09	42	1639	0.246	ug/l	# 41
30) Chloroform	5.19	83	9769	0.464	ug/l	88
36) 1,1-Dichloropropene	5.63	75	73608	4.739	ug/l	# 55
37) Ethyl Acetate	4.81	43	5831	0.288	ug/l	# 70
38) Carbon Tetrachloride	5.64	117	100374	5.966	ug/l	# 14
42) 1,2-Dichloroethane	6.17	62	5186	0.284	ug/l	93
44) Trichloroethene	7.19	130	62876	5.067	ug/l	93
49) 1,4-Dioxane	7.72	88	326	1.025	ug/l	# 74
64) Tetrachloroethene	9.32	164	10264	0.852	ug/l	98
65) Chlorobenzene	10.12	112	137591	4.321	ug/l	97
76) 1,2,3-Trichloropropane	11.12	75	421541	22.866	ug/l	# 35
81) trans-1,4-Dichloro-2-buten	11.12	75	421541	54.867	ug/l	# 10
87) 1,3-Dichlorobenzene	12.01	146	6317	0.225	ug/l	92
88) 1,4-Dichlorobenzene	12.01	146	6317	0.221	ug/l	93
91) 1,2-Dichlorobenzene	12.38	146	148344	5.404	ug/l	98

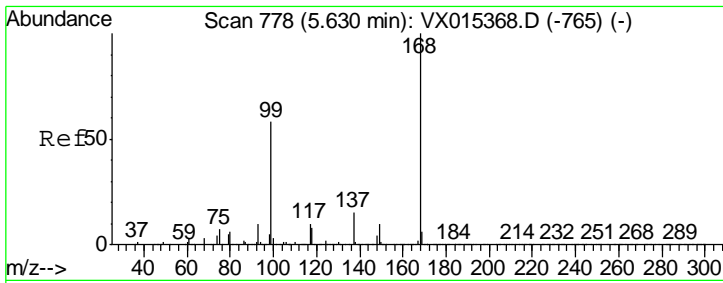
(#) = qualifier out of range (m) = manual integration (+) = signals summed

Data Path : Z:\VOASRV\HPCHEM1\MSVOA X\DATA\VX041520\  
 Data File : VX015691.D  
 Acq On : 15 Apr 2020 18:16  
 Operator : JC/SP  
 Sample : L2233-08  
 Misc : 5.0mL/MSVOA X/WATER  
 ALS Vial : 19 Sample Multiplier: 1

Instrument :  
 MSVOA\_X  
 Client Sampled :  
 SS037MW307-200409

Quant Time: Apr 16 05:57:05 2020  
 Quant Method : Z:\VOASRV\HPCHEM1\MSVOA\_X\METHOD\82X032720W.M  
 Quant Title : SW846 8260  
 QLast Update : Fri Mar 27 09:35:51 2020  
 Response via : Initial Calibration

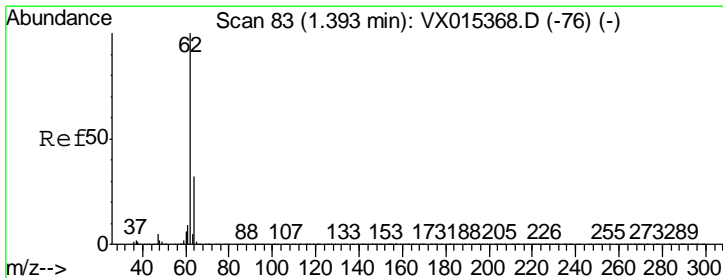
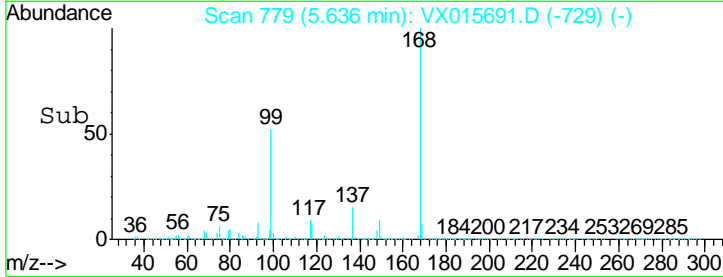
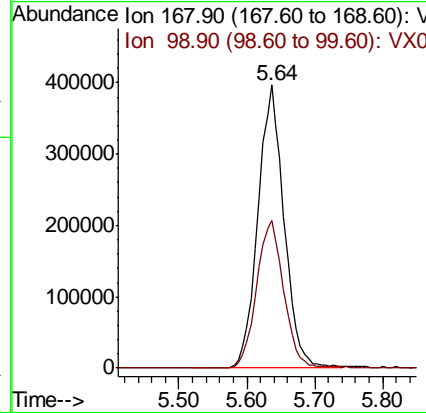
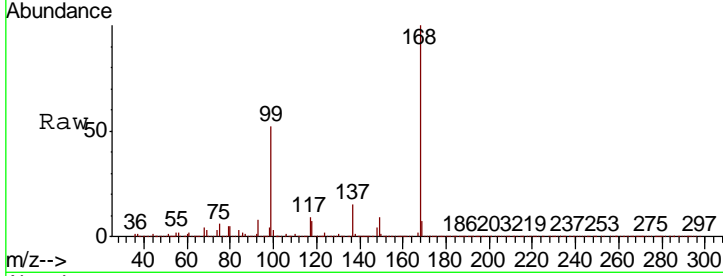




#1  
 Pentafluorobenzene  
 Concen: 50.000 ug/l  
 RT: 5.64 min Scan# 779  
 Delta R.T. 0.01 min  
 Lab File: VX015691.D  
 Acq: 15 Apr 2020 18:16

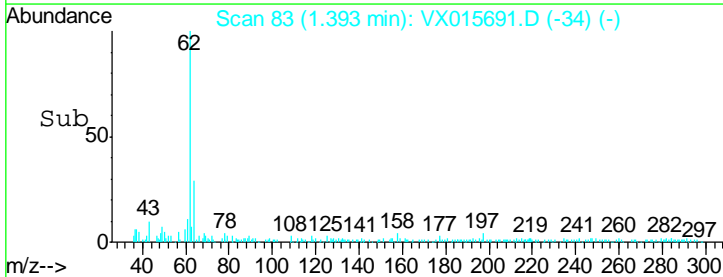
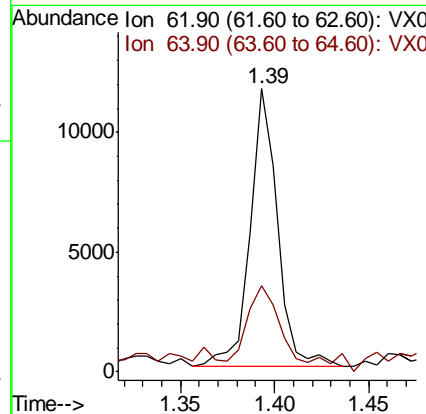
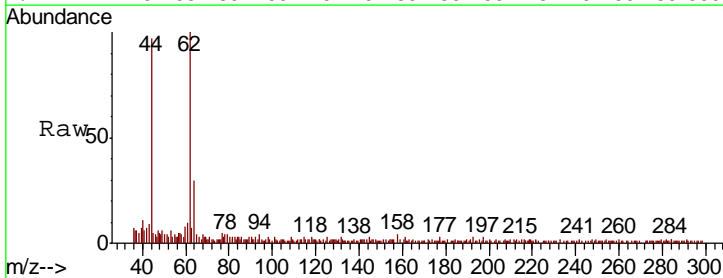
Instrument :  
 MSVOA\_X  
 ClientSampleId :  
 SS037MW307-200409

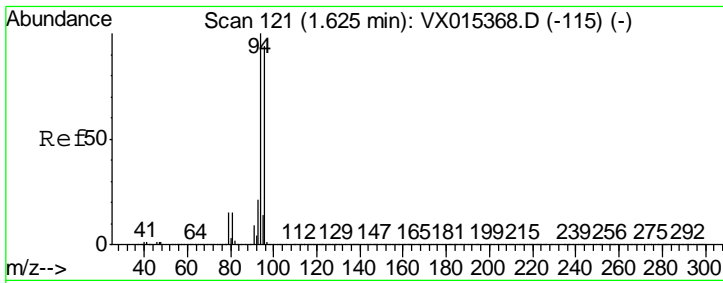
Tgt Ion: 168 Resp: 1063998  
 Ion Ratio Lower Upper  
 168 100  
 99 52.0 46.4 69.6



#4  
 Vinyl Chloride  
 Concen: 1.069 ug/l  
 RT: 1.39 min Scan# 83  
 Delta R.T. -0.00 min  
 Lab File: VX015691.D  
 Acq: 15 Apr 2020 18:16

Tgt Ion: 62 Resp: 11716  
 Ion Ratio Lower Upper  
 62 100  
 64 24.1 26.0 39.0#

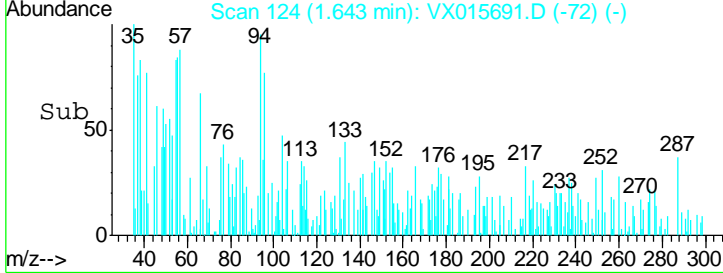
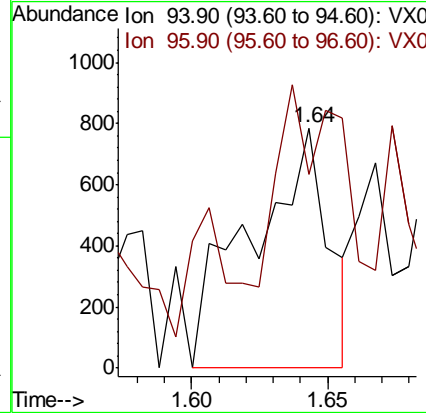
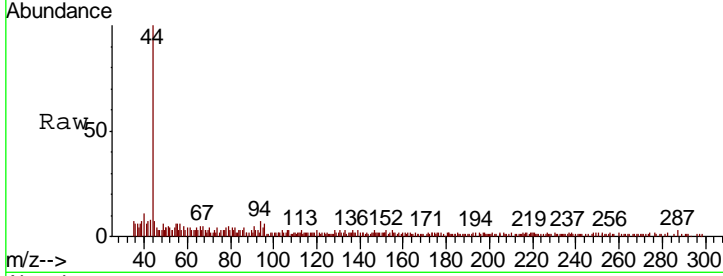




#5  
 Bromomethane  
 Concen: Below Cal  
 RT: 1.64 min Scan# 124  
 Delta R.T. 0.02 min  
 Lab File: VX015691.D  
 Acq: 15 Apr 2020 18:16

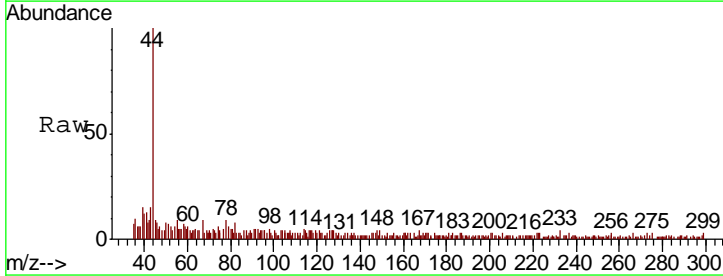
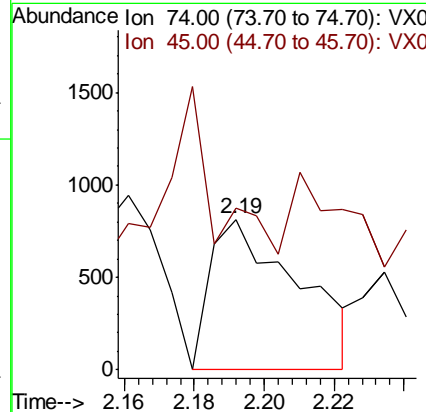
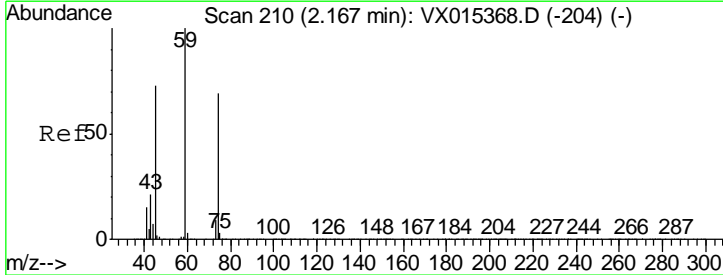
**Instrument :**  
 MSVOA\_X  
**ClientSampled :**  
 SS037MW307-200409

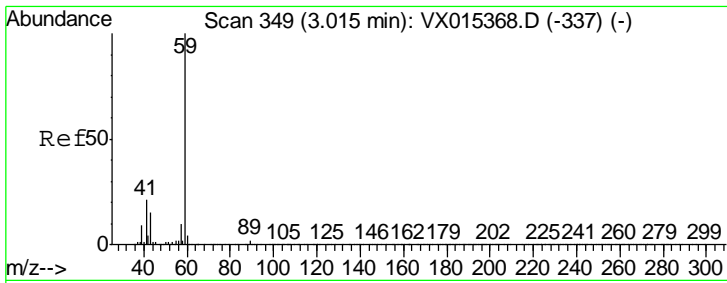
Tgt Ion: 94 Resp: 1551  
 Ion Ratio Lower Upper  
 94 100  
 96 28.0 74.8 112.2#



#8  
 Diethyl Ether  
 Concen: 0.229 ug/l  
 RT: 2.19 min Scan# 214  
 Delta R.T. 0.02 min  
 Lab File: VX015691.D  
 Acq: 15 Apr 2020 18:16

Tgt Ion: 74 Resp: 1419  
 Ion Ratio Lower Upper  
 74 100  
 45 54.6 53.8 161.4

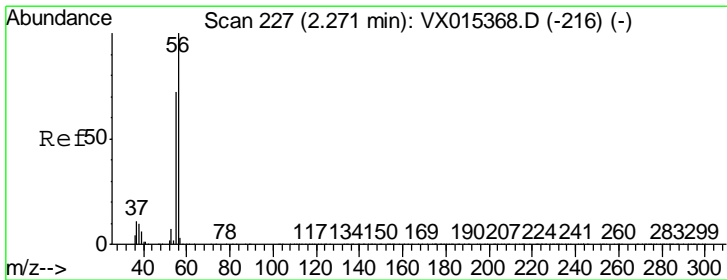
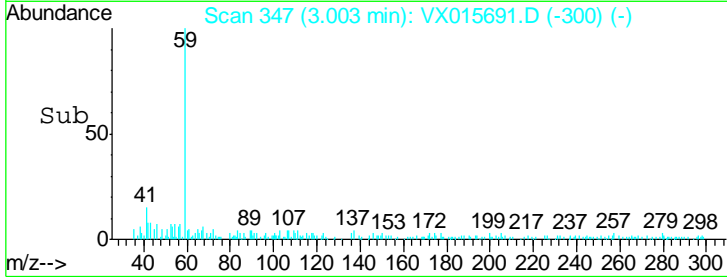
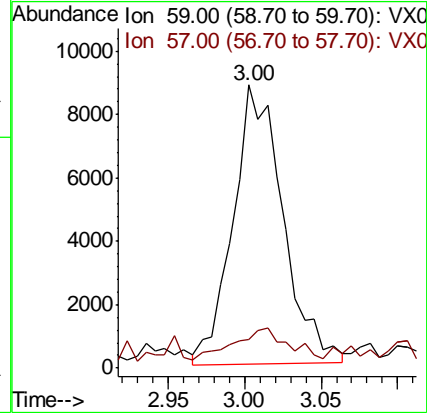
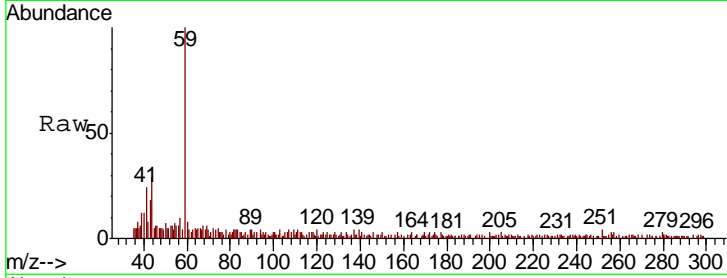




#11  
 Tert butyl alcohol  
 Concen: 5.548 ug/l  
 RT: 3.00 min Scan# 347  
 Delta R.T. -0.01 min  
 Lab File: VX015691.D  
 Acq: 15 Apr 2020 18:16

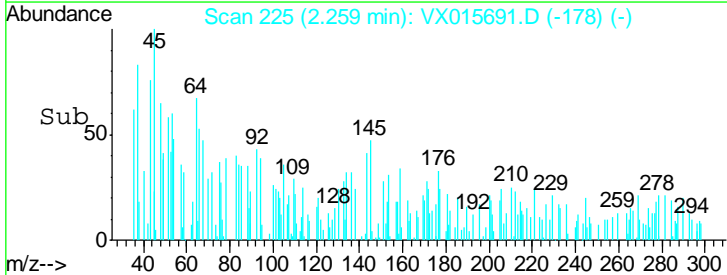
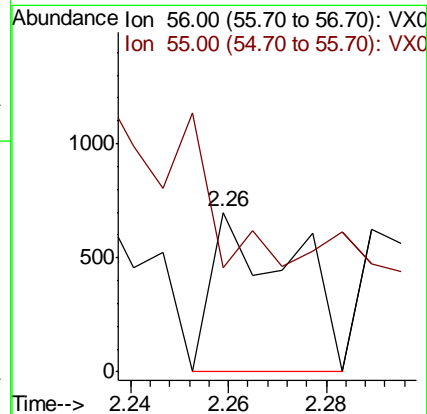
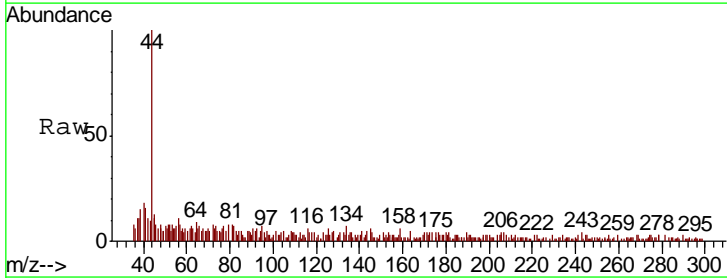
Instrument :  
 MSVOA\_X  
 ClientSampled :  
 SS037MW307-200409

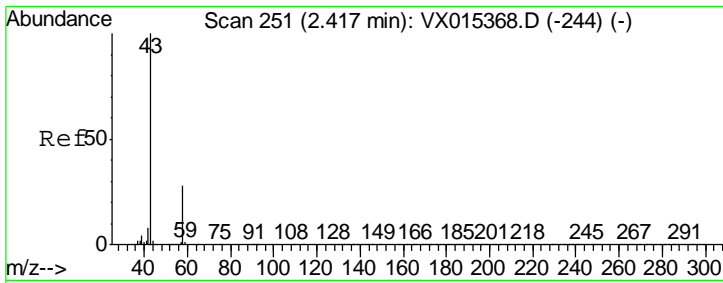
Tgt Ion: 59 Resp: 19928  
 Ion Ratio Lower Upper  
 59 100  
 57 13.1 8.1 12.1#



#13  
 Acrolein  
 Concen: 0.389 ug/l  
 RT: 2.26 min Scan# 225  
 Delta R.T. -0.01 min  
 Lab File: VX015691.D  
 Acq: 15 Apr 2020 18:16

Tgt Ion: 56 Resp: 796  
 Ion Ratio Lower Upper  
 56 100  
 55 0.0 57.0 85.4#

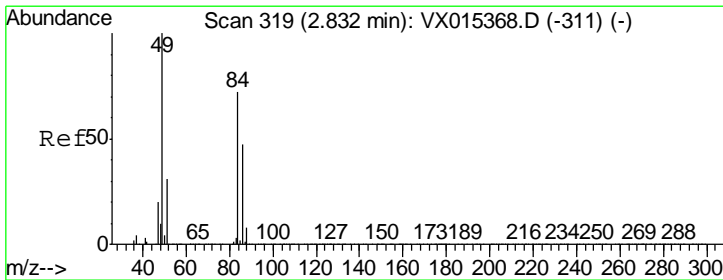
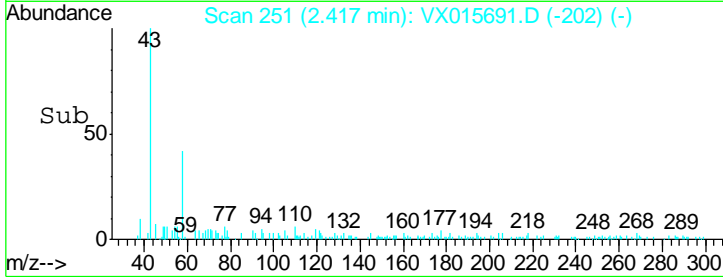
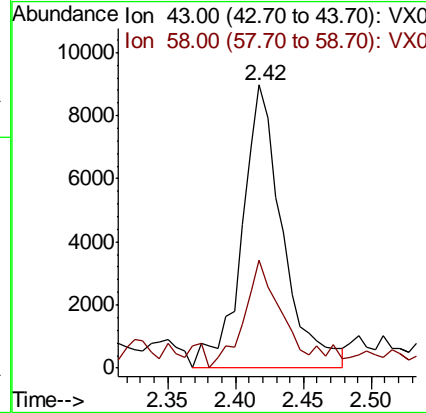
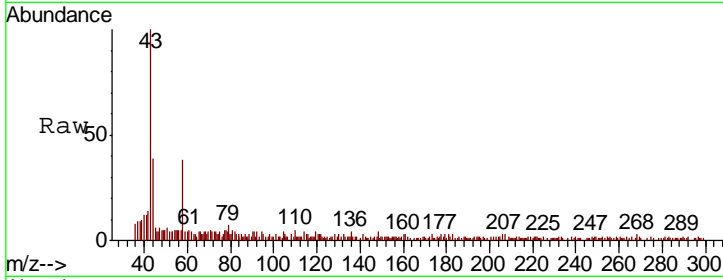




#16  
 Acetone  
 Concen: 2.911 ug/l  
 RT: 2.42 min Scan# 251  
 Delta R.T. 0.00 min  
 Lab File: VX015691.D  
 Acq: 15 Apr 2020 18:16

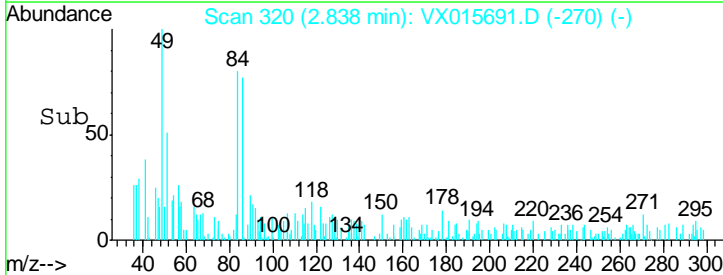
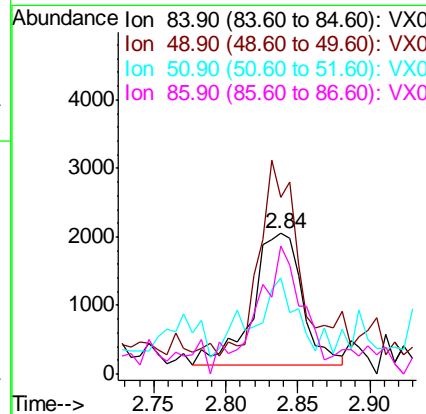
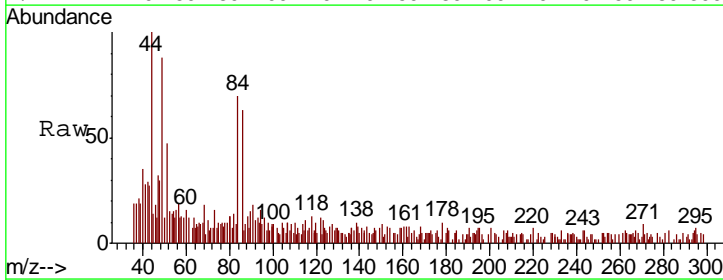
Instrument :  
 MSVOA\_X  
 ClientSampleID :  
 SS037MW307-200409

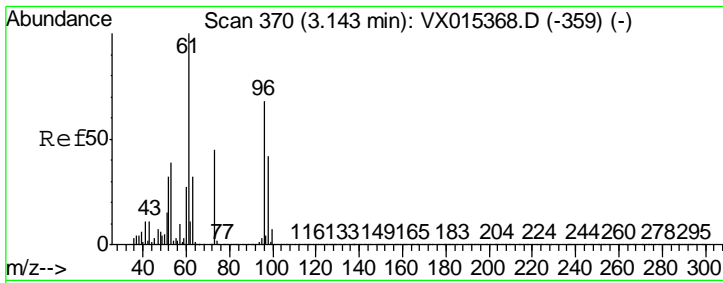
Tgt Ion: 43 Resp: 18767  
 Ion Ratio Lower Upper  
 43 100  
 58 34.5 22.1 33.1#



#20  
 Methylene Chloride  
 Concen: 0.383 ug/l  
 RT: 2.84 min Scan# 320  
 Delta R.T. 0.01 min  
 Lab File: VX015691.D  
 Acq: 15 Apr 2020 18:16

Tgt Ion: 84 Resp: 4618  
 Ion Ratio Lower Upper  
 84 100  
 49 126.2 111.3 166.9  
 51 44.4 34.0 51.0  
 86 87.5 52.5 78.7#

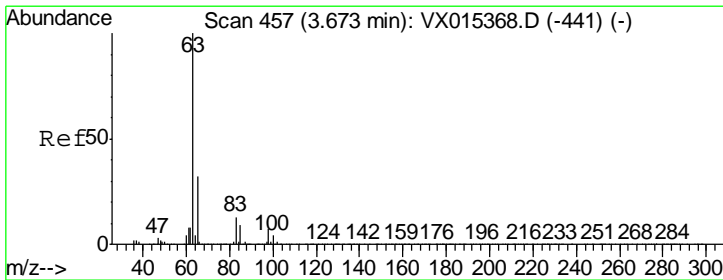
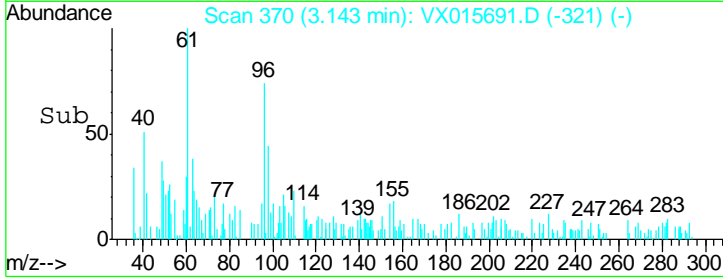
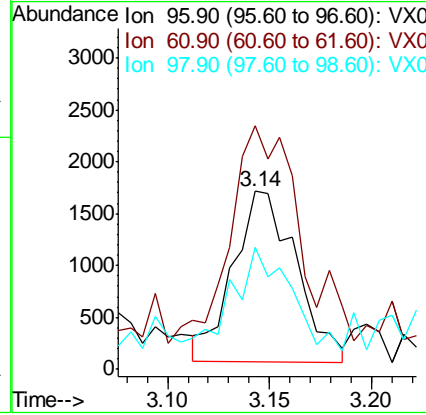
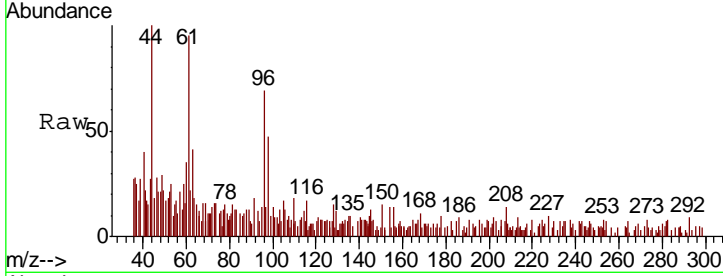




#21  
 trans-1,2-Dichloroethene  
 Concen: 0.315 ug/l  
 RT: 3.14 min Scan# 370  
 Delta R.T. -0.00 min  
 Lab File: VX015691.D  
 Acq: 15 Apr 2020 18:16

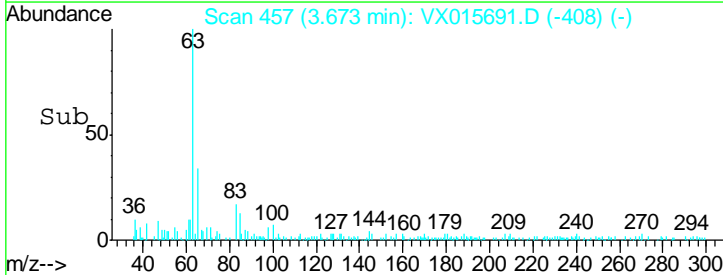
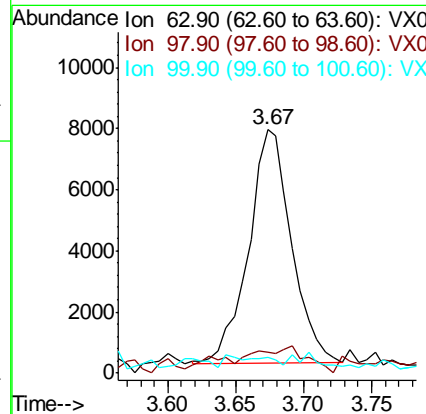
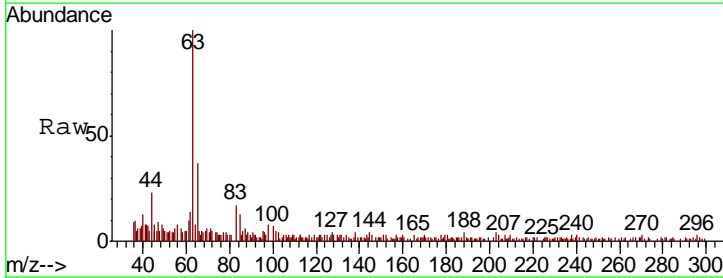
Instrument :  
 MSVOA\_X  
 ClientSampleId :  
 SS037MW307-200409

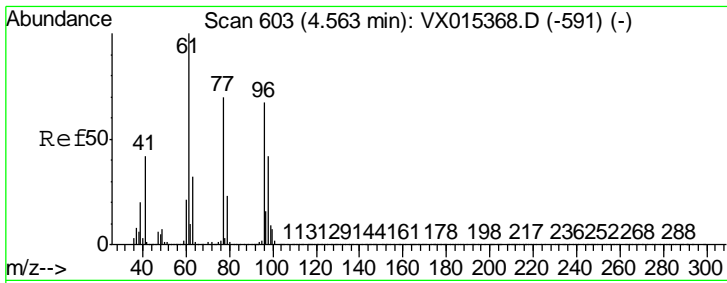
Tgt Ion	Resp	Lower	Upper
96	3507		
96	100		
61	122.9	116.9	175.3
98	65.4	48.6	73.0



#24  
 1,1-Dichloroethane  
 Concen: 0.769 ug/l  
 RT: 3.67 min Scan# 457  
 Delta R.T. 0.00 min  
 Lab File: VX015691.D  
 Acq: 15 Apr 2020 18:16

Tgt Ion	Resp	Lower	Upper
63	16848		
63	100		
98	5.4	3.3	9.8
100	4.2	2.1	6.5

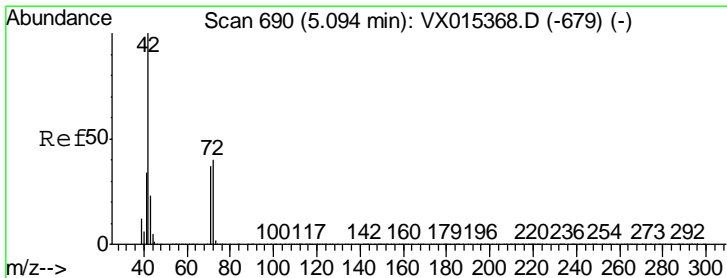
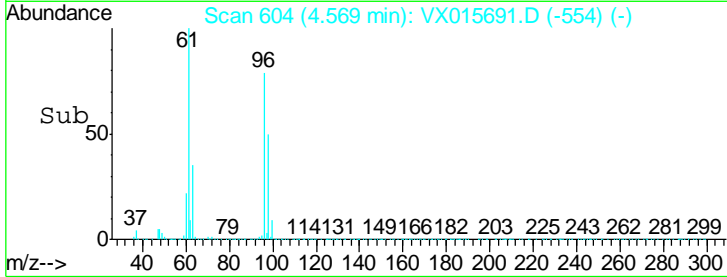
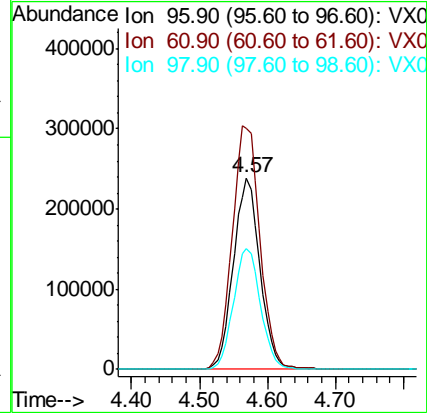
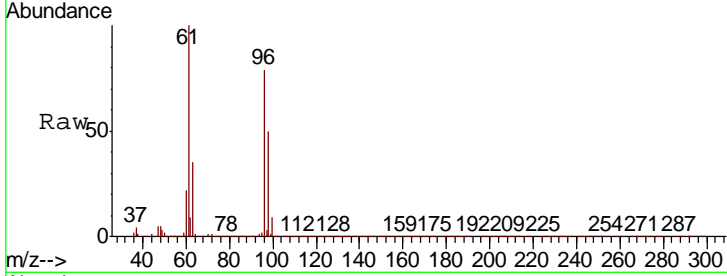




#27  
 cis-1,2-Dichloroethene  
 Concen: 49.866 ug/l  
 RT: 4.57 min Scan# 604  
 Delta R.T. 0.01 min  
 Lab File: VX015691.D  
 Acq: 15 Apr 2020 18:16

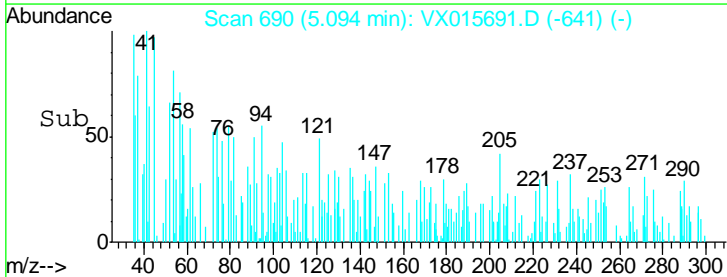
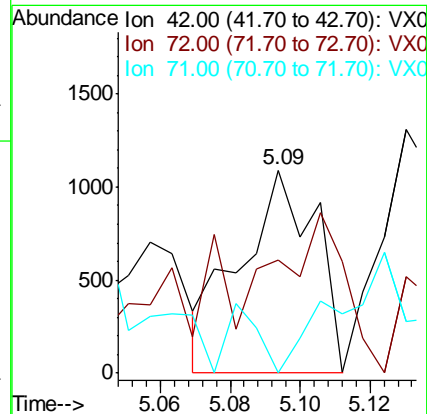
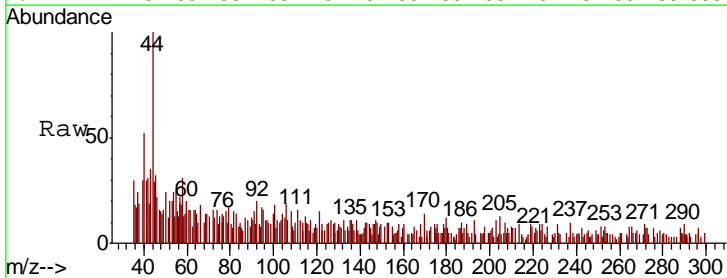
Instrument :  
 MSVOA\_X  
 ClientSampleId :  
 SS037MW307-200409

Tgt Ion	Resp	Lower	Upper
96	643169		
61	133.2	0.0	308.4
98	64.5	0.0	129.2

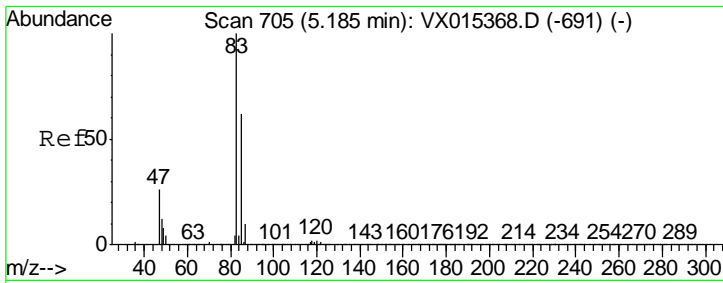


#29  
 Tetrahydrofuran  
 Concen: 0.246 ug/l  
 RT: 5.09 min Scan# 690  
 Delta R.T. -0.00 min  
 Lab File: VX015691.D  
 Acq: 15 Apr 2020 18:16

Tgt Ion	Resp	Lower	Upper
42	1639		
72	74.4	31.7	47.5#
71	0.0	29.6	44.4#



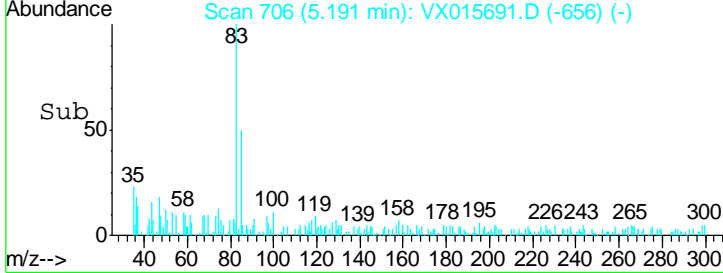
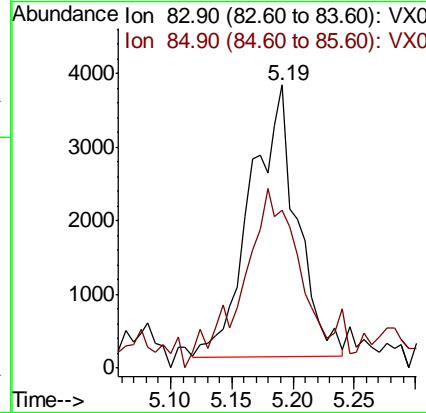
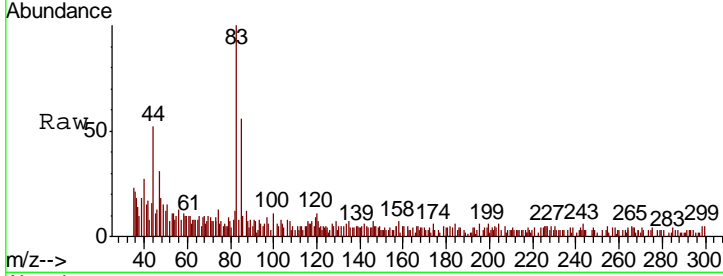




#30  
 Chloroform  
 Concen: 0.464 ug/l  
 RT: 5.19 min Scan# 706  
 Delta R.T. 0.01 min  
 Lab File: VX015691.D  
 Acq: 15 Apr 2020 18:16

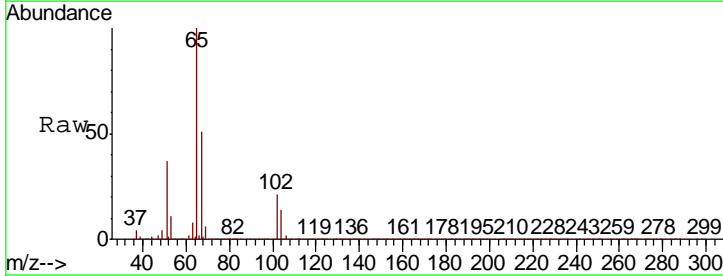
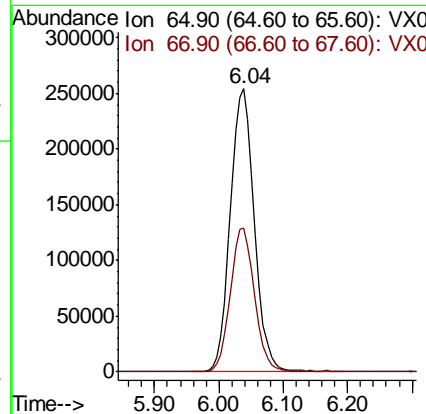
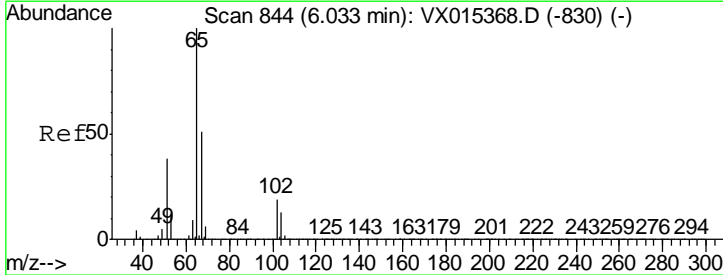
Instrument :  
 MSVOA\_X  
 ClientSampleId :  
 SS037MW307-200409

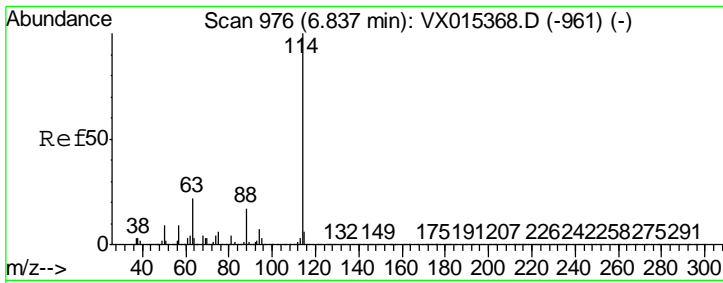
Tgt Ion	Resp	Lower	Upper
83	100		
85	52.7	49.5	74.3



#33  
 1,2-Dichloroethane-d4  
 Concen: 44.407 ug/l  
 RT: 6.04 min Scan# 845  
 Delta R.T. 0.01 min  
 Lab File: VX015691.D  
 Acq: 15 Apr 2020 18:16

Tgt Ion	Resp	Lower	Upper
65	100		
67	50.9	0.0	102.6

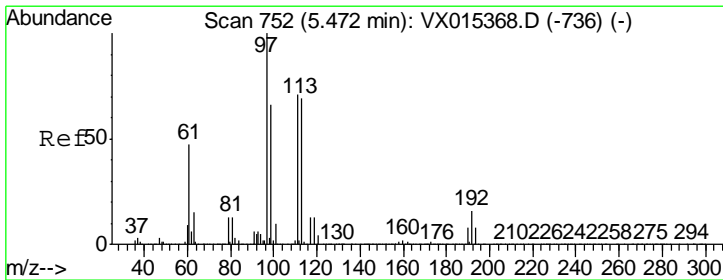
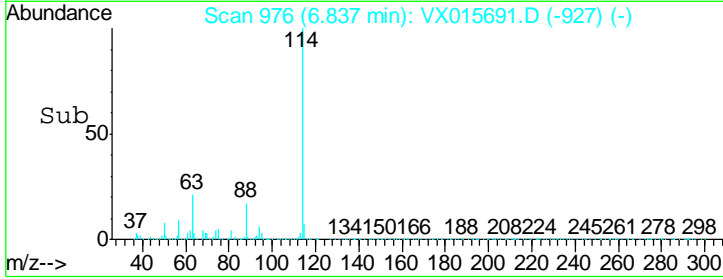
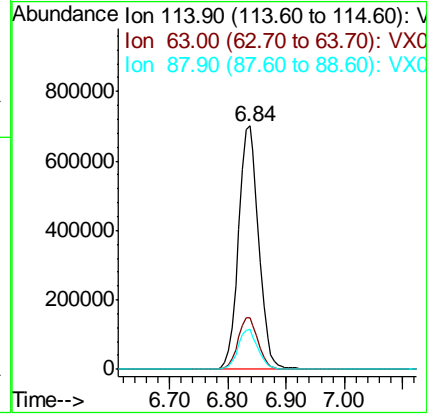
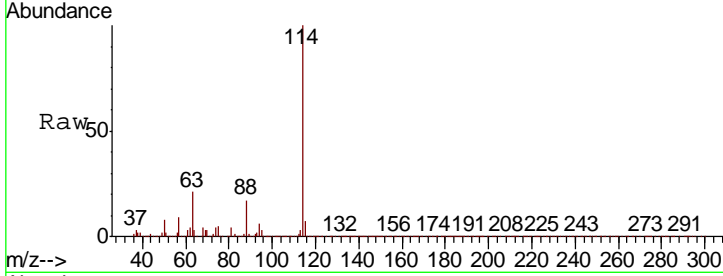




#34  
 1,4-Difluorobenzene  
 Concen: 50.000 ug/l  
 RT: 6.84 min Scan# 976  
 Delta R.T. 0.00 min  
 Lab File: VX015691.D  
 Acq: 15 Apr 2020 18:16

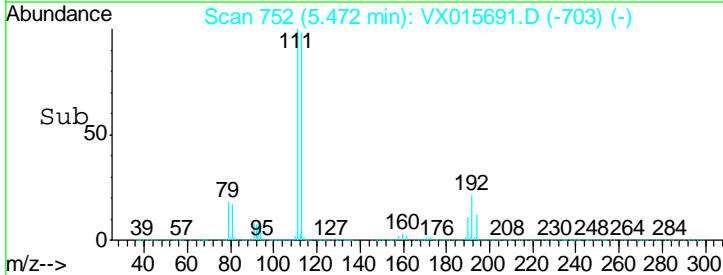
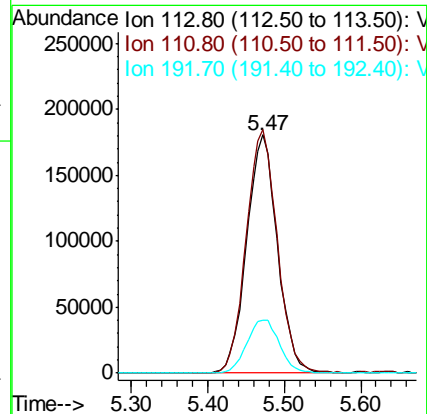
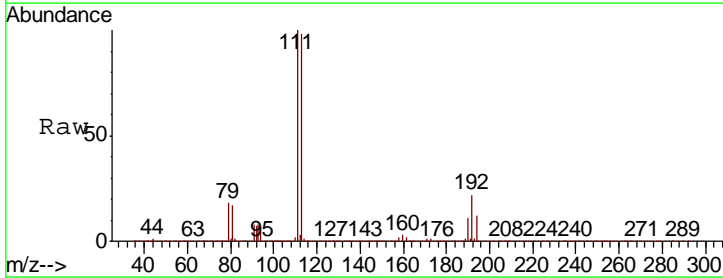
Instrument :  
 MSVOA\_X  
 ClientSampleId :  
 SS037MW307-200409

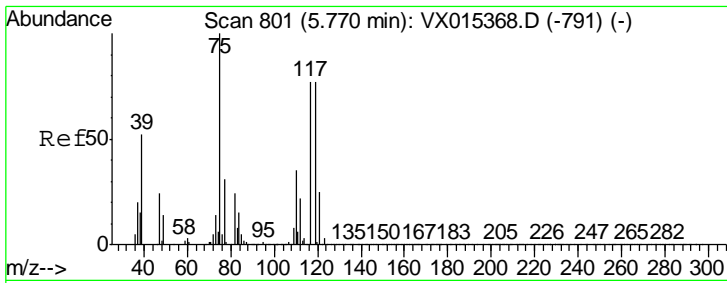
Tgt Ion	Resp	Lower	Upper
114	1685871		
63	21.4	0.0	44.2
88	16.6	0.0	33.8



#35  
 Dibromofluoromethane  
 Concen: 46.663 ug/l  
 RT: 5.47 min Scan# 752  
 Delta R.T. -0.00 min  
 Lab File: VX015691.D  
 Acq: 15 Apr 2020 18:16

Tgt Ion	Resp	Lower	Upper
113	502870		
111	103.5	81.5	122.3
192	23.9	17.8	26.6

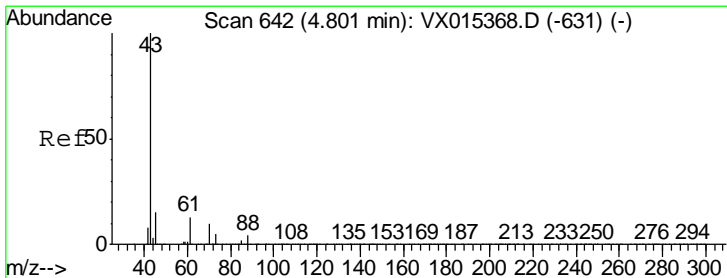
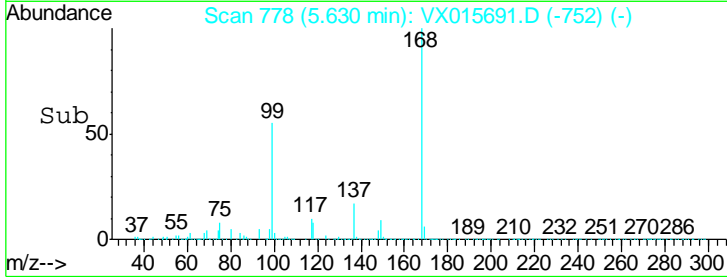
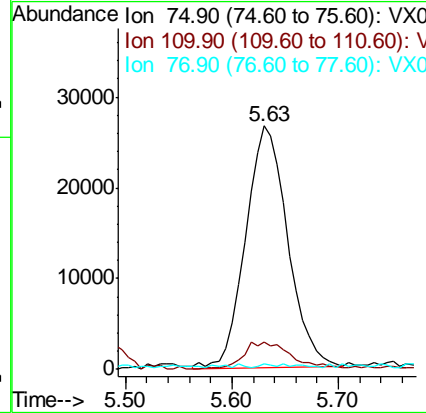
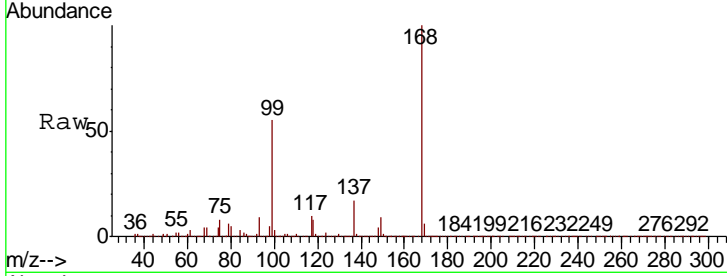




#36  
 1,1-Dichloropropene  
 Concen: 4.739 ug/l  
 RT: 5.63 min Scan# 778  
 Delta R.T. -0.14 min  
 Lab File: VX015691.D  
 Acq: 15 Apr 2020 18:16

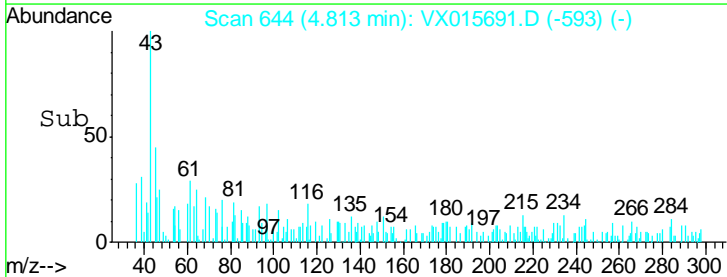
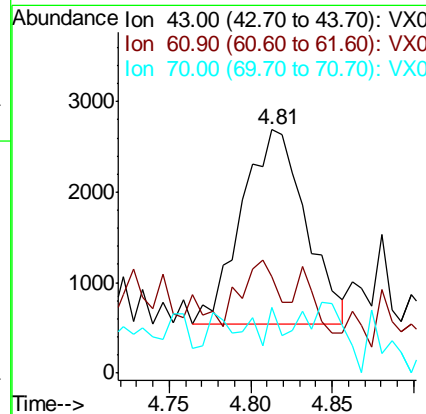
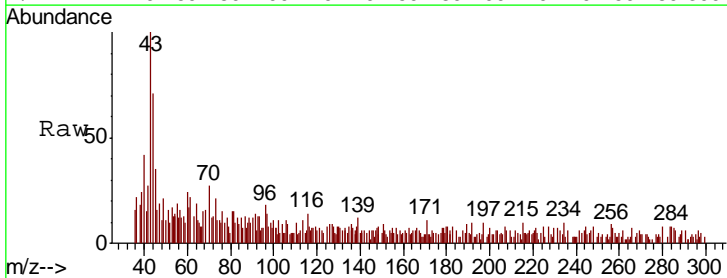
**Instrument :**  
 MSVOA\_X  
**ClientSampled :**  
 SS037MW307-200409

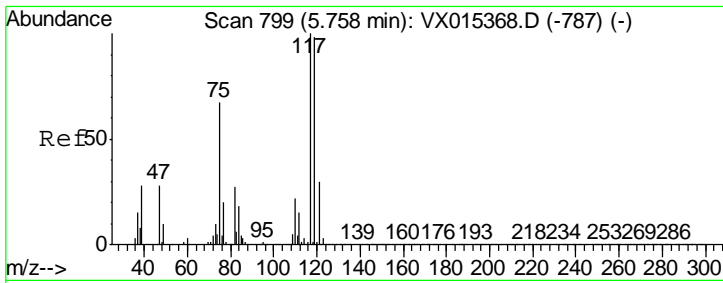
Tgt Ion	Resp	Lower	Upper
75	100		
110	13.1	17.1	51.3#
77	0.5	24.6	36.8#



#37  
 Ethyl Acetate  
 Concen: 0.288 ug/l  
 RT: 4.81 min Scan# 644  
 Delta R.T. 0.01 min  
 Lab File: VX015691.D  
 Acq: 15 Apr 2020 18:16

Tgt Ion	Resp	Lower	Upper
43	100		
61	0.0	9.9	14.9#
70	0.0	8.1	12.1#

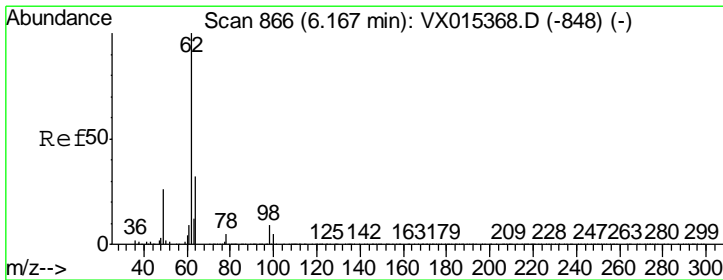
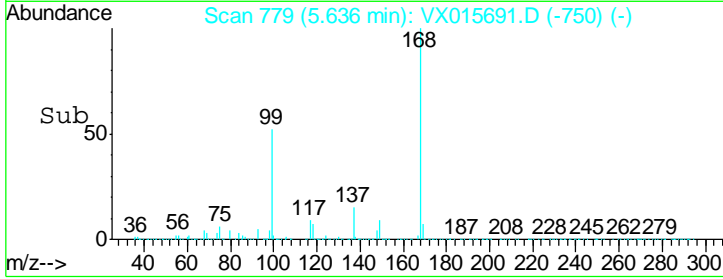
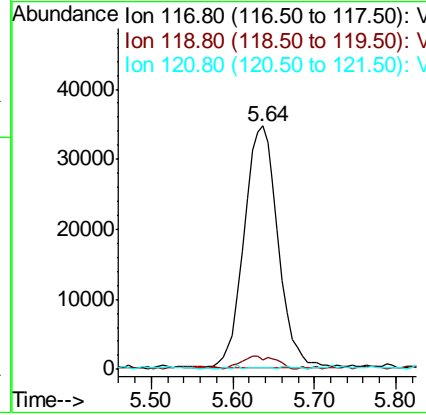
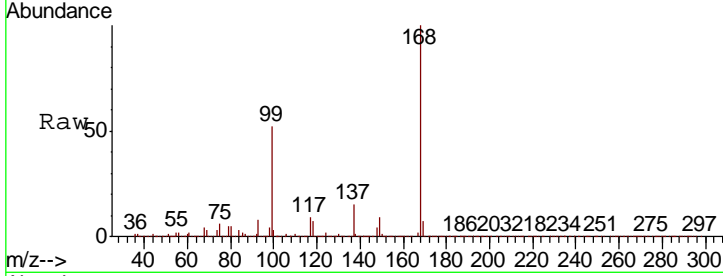




#38  
 Carbon Tetrachloride  
 Concen: 5.966 ug/l  
 RT: 5.64 min Scan# 779  
 Delta R.T. -0.12 min  
 Lab File: VX015691.D  
 Acq: 15 Apr 2020 18:16

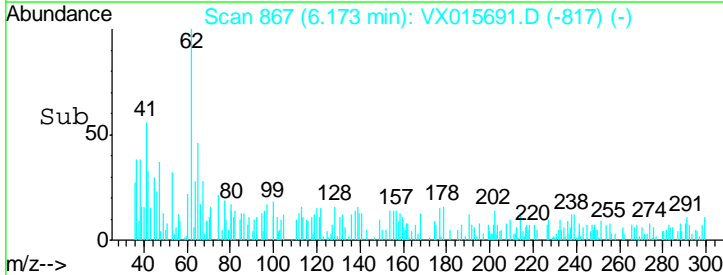
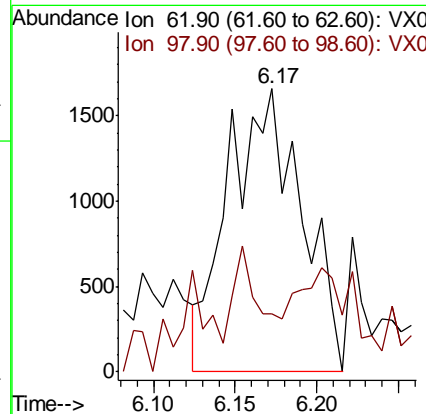
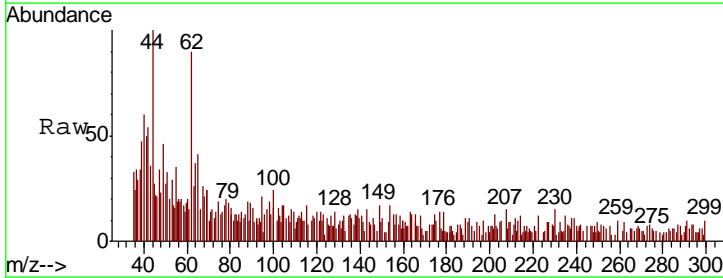
Instrument :  
 MSVOA\_X  
 ClientSampleId :  
 SS037MW307-200409

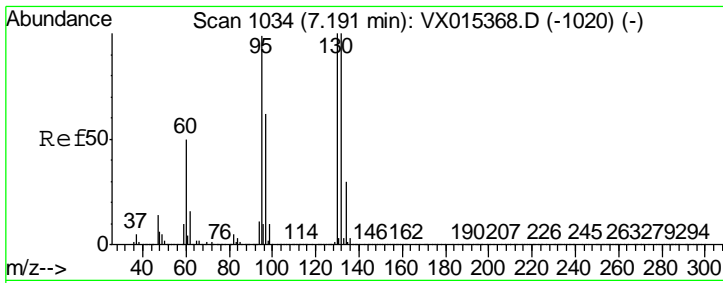
Tgt Ion	Resp	Lower	Upper
117	100		
119	3.2	78.0	117.0#
121	0.4	23.8	35.8#



#42  
 1,2-Dichloroethane  
 Concen: 0.284 ug/l  
 RT: 6.17 min Scan# 867  
 Delta R.T. 0.01 min  
 Lab File: VX015691.D  
 Acq: 15 Apr 2020 18:16

Tgt Ion	Resp	Lower	Upper
62	100		
98	11.3	0.0	17.6

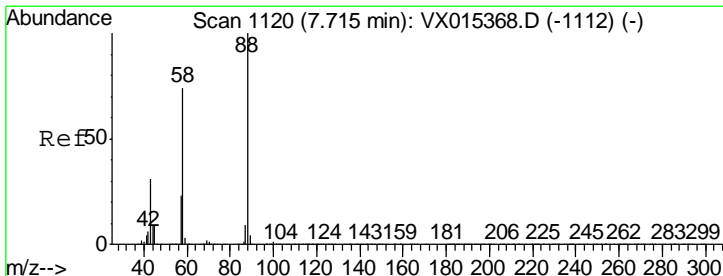
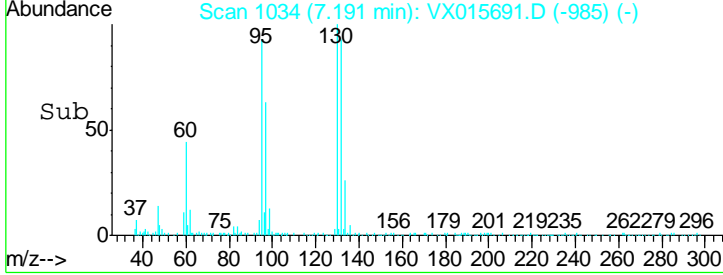
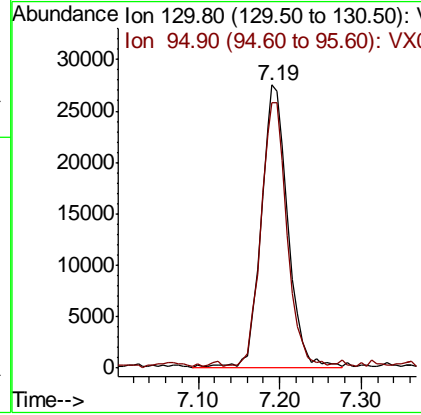
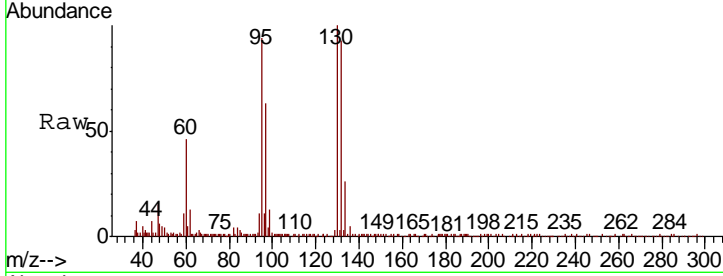




#44  
 Trichloroethene  
 Concen: 5.067 ug/l  
 RT: 7.19 min Scan# 1034  
 Delta R.T. 0.00 min  
 Lab File: VX015691.D  
 Acq: 15 Apr 2020 18:16

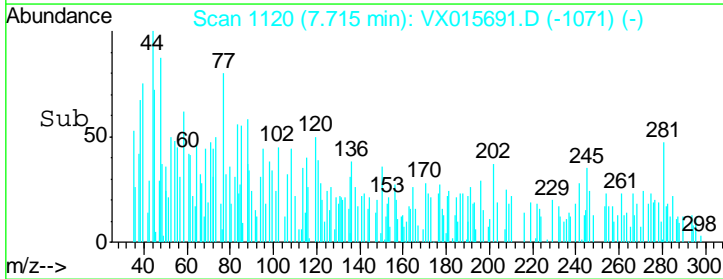
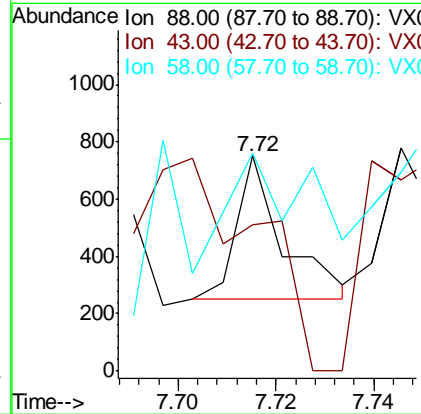
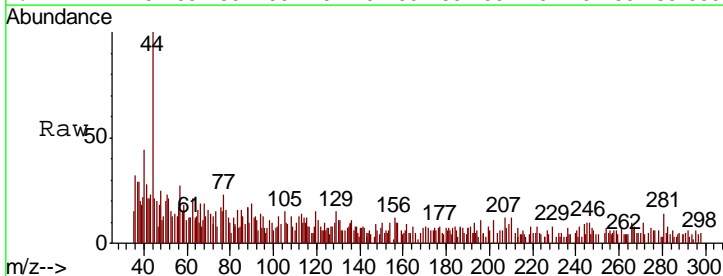
**Instrument :**  
 MSVOA\_X  
**ClientSampled :**  
 SS037MW307-200409

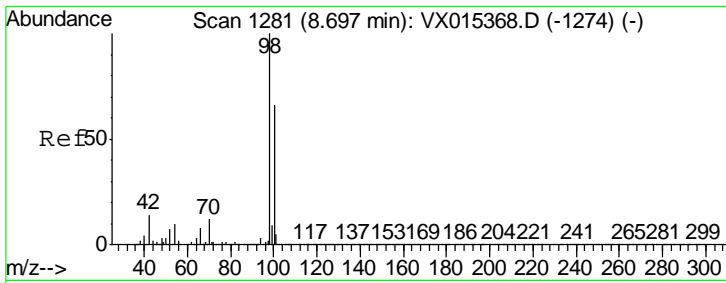
Tgt Ion	Resp	Lower	Upper
130	62876		
95	93.0	0.0	199.0



#49  
 1,4-Dioxane  
 Concen: 1.025 ug/l  
 RT: 7.72 min Scan# 1120  
 Delta R.T. -0.00 min  
 Lab File: VX015691.D  
 Acq: 15 Apr 2020 18:16

Tgt Ion	Resp	Lower	Upper
88	326		
43	0.0	30.1	45.1#
58	69.6	60.6	90.8

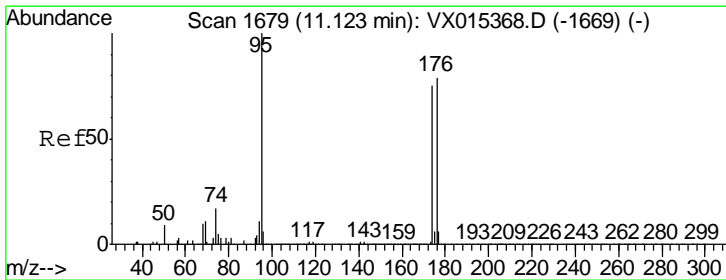
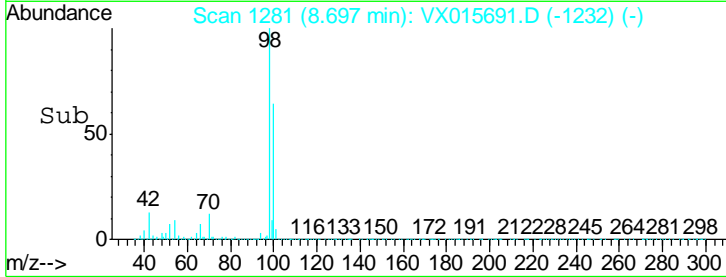
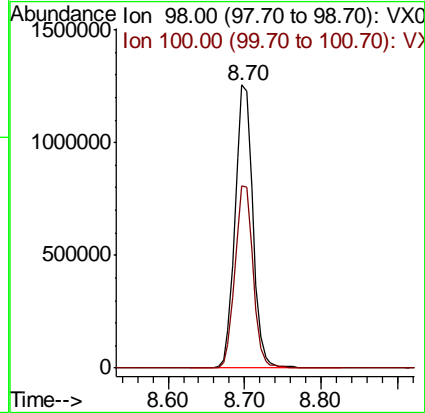
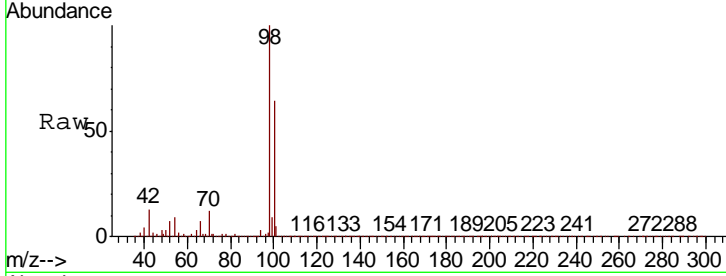




#50  
 Toluene-d8  
 Concen: 50.975 ug/l  
 RT: 8.70 min Scan# 1281  
 Delta R.T. -0.00 min  
 Lab File: VX015691.D  
 Acq: 15 Apr 2020 18:16

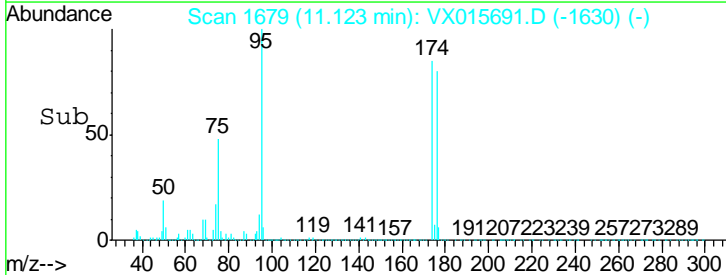
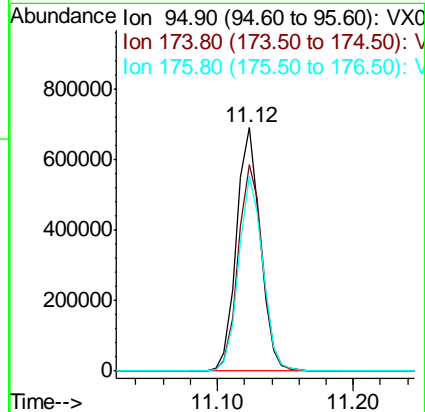
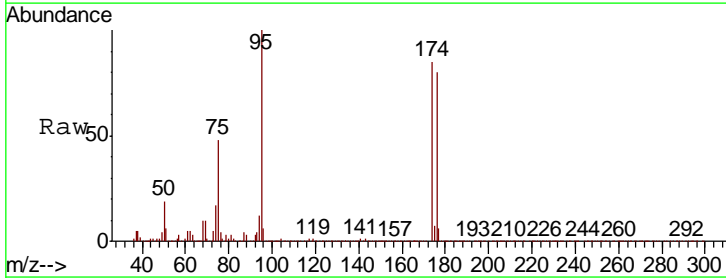
Instrument :  
 MSVOA\_X  
 ClientSampleID :  
 SS037MW307-200409

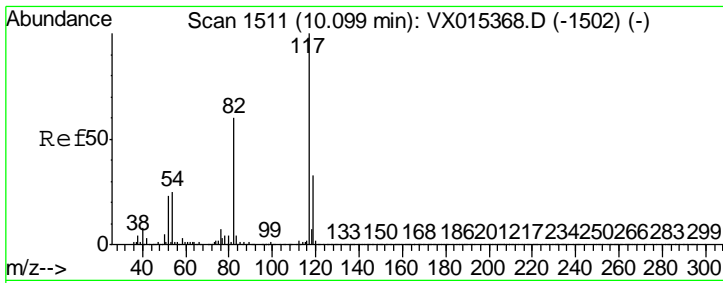
Tgt Ion: 98 Resp: 2022492  
 Ion Ratio Lower Upper  
 98 100  
 100 65.5 53.5 80.3



#62  
 4-Bromofluorobenzene  
 Concen: 52.050 ug/l  
 RT: 11.12 min Scan# 1679  
 Delta R.T. 0.00 min  
 Lab File: VX015691.D  
 Acq: 15 Apr 2020 18:16

Tgt Ion: 95 Resp: 839278  
 Ion Ratio Lower Upper  
 95 100  
 174 86.8 0.0 158.6  
 176 81.0 0.0 159.0

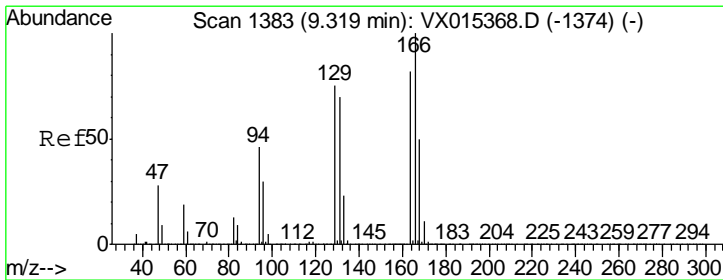
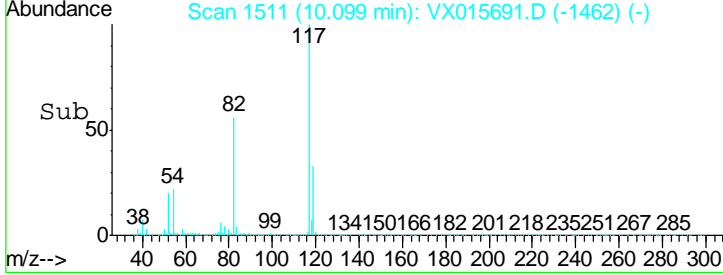
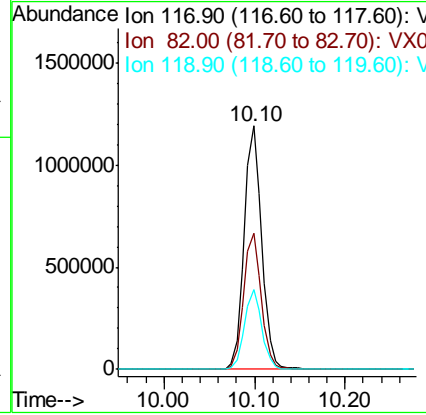
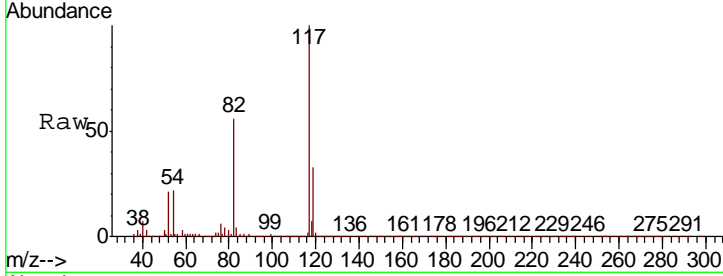




#63  
 Chlorobenzene-d5  
 Concen: 50.000 ug/l  
 RT: 10.10 min Scan# 1511  
 Delta R.T. -0.00 min  
 Lab File: VX015691.D  
 Acq: 15 Apr 2020 18:16

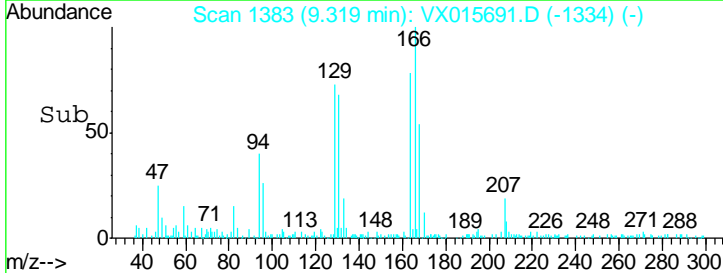
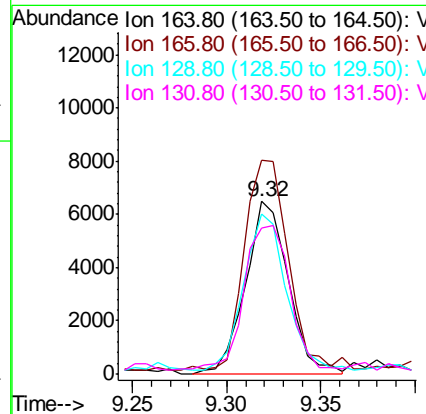
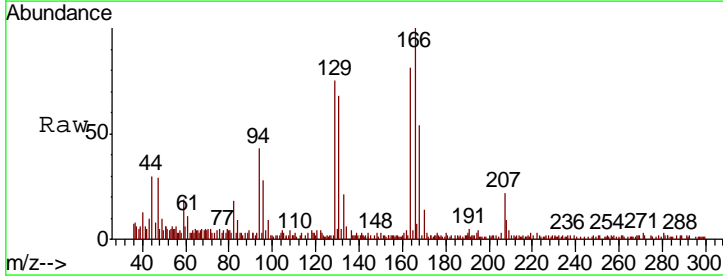
Instrument :  
 MSVOA\_X  
 ClientSampled :  
 SS037MW307-200409

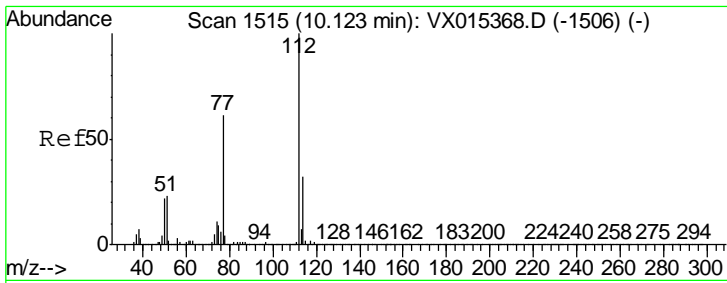
Tgt Ion	Resp	Lower	Upper
117	1596574		
82	55.8	47.8	71.8
119	32.6	26.8	40.2



#64  
 Tetrachloroethene  
 Concen: 0.852 ug/l  
 RT: 9.32 min Scan# 1383  
 Delta R.T. 0.00 min  
 Lab File: VX015691.D  
 Acq: 15 Apr 2020 18:16

Tgt Ion	Resp	Lower	Upper
164	10264		
166	121.2	97.8	146.6
129	92.3	73.0	109.4
131	82.7	68.6	103.0

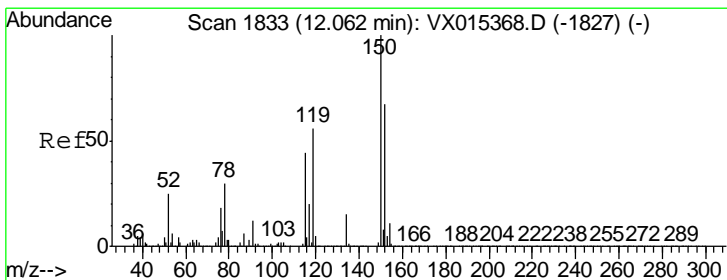
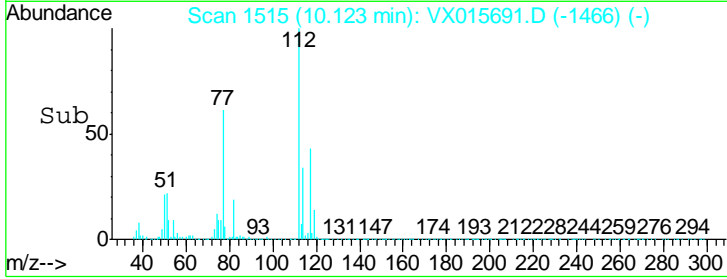
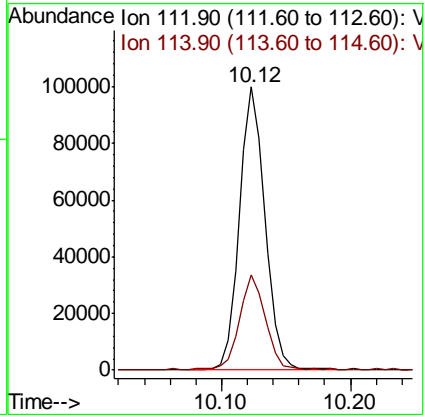
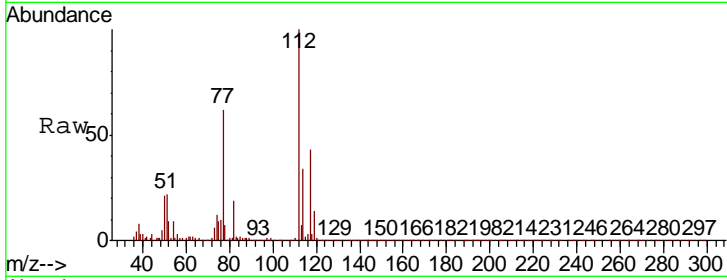




#65  
 Chlorobenzene  
 Concen: 4.321 ug/l  
 RT: 10.12 min Scan# 1515  
 Delta R.T. 0.00 min  
 Lab File: VX015691.D  
 Acq: 15 Apr 2020 18:16

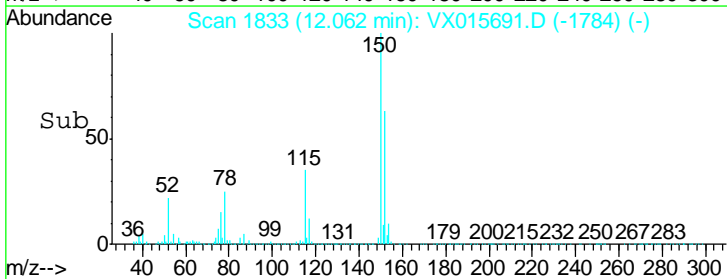
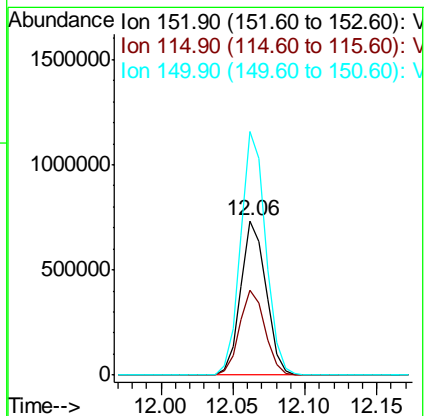
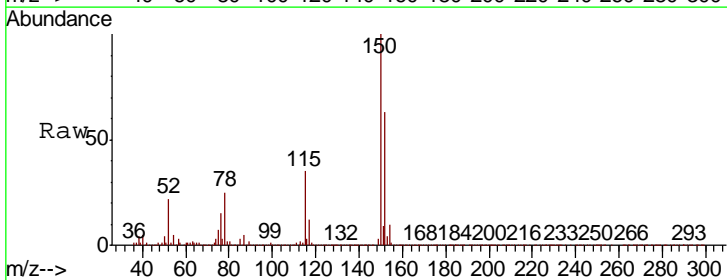
Instrument : MSVOA\_X  
 ClientSampled : SS037MW307-200409

Tgt Ion	Resp	Lower	Upper
112	137591		
114	33.5	25.5	38.3

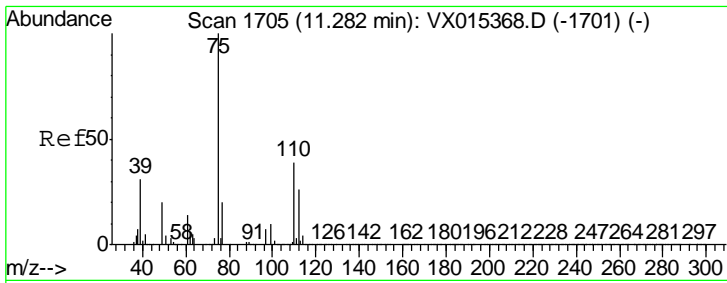


#72  
 1,4-Dichlorobenzene-d4  
 Concen: 50.000 ug/l  
 RT: 12.06 min Scan# 1833  
 Delta R.T. -0.00 min  
 Lab File: VX015691.D  
 Acq: 15 Apr 2020 18:16

Tgt Ion	Resp	Lower	Upper
152	896460		
115	55.2	39.0	116.9
150	155.9	0.0	340.8



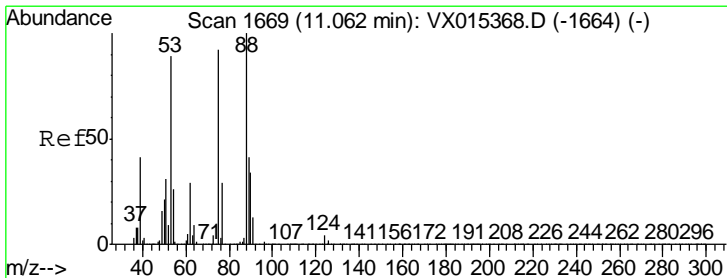
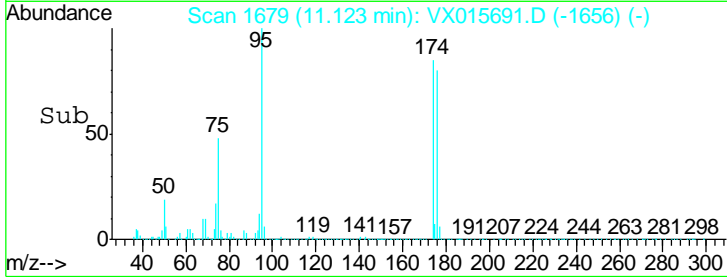
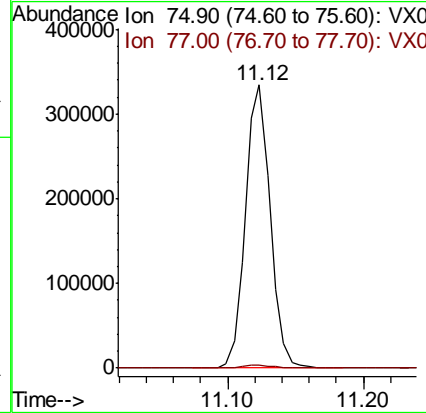
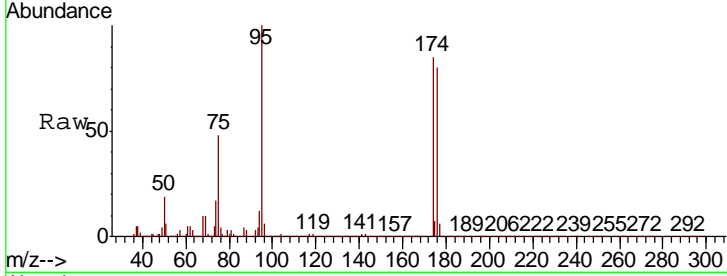




#76  
 1,2,3-Trichloropropane  
 Concen: 22.866 ug/l  
 RT: 11.12 min Scan# 1679  
 Delta R.T. -0.16 min  
 Lab File: VX015691.D  
 Acq: 15 Apr 2020 18:16

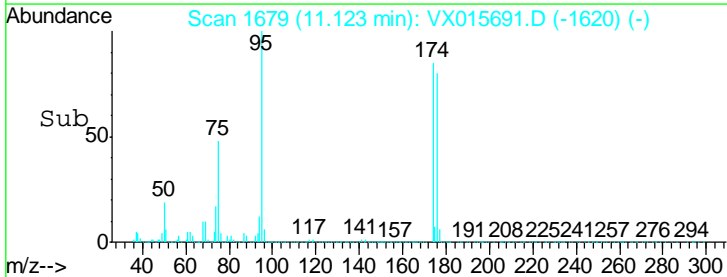
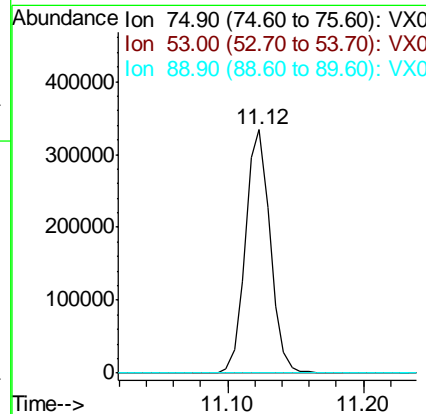
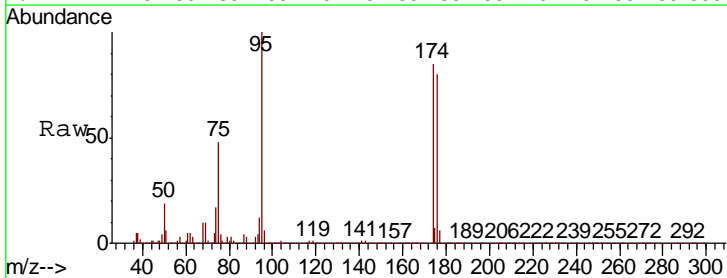
Instrument : MSVOA\_X  
 ClientSampleId : SS037MW307-200409

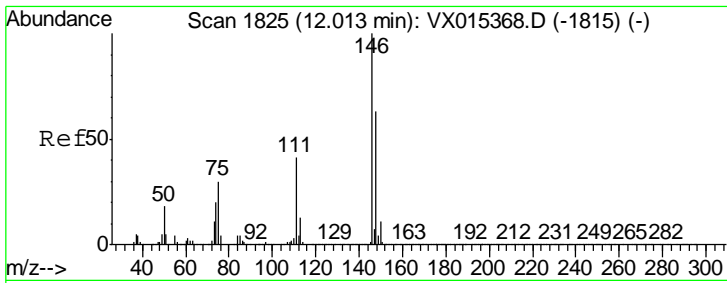
Tgt Ion: 75 Resp: 421541  
 Ion Ratio Lower Upper  
 75 100  
 77 1.3 21.2 63.6#



#81  
 trans-1,4-Dichloro-2-butene  
 Concen: 54.867 ug/l  
 RT: 11.12 min Scan# 1679  
 Delta R.T. 0.06 min  
 Lab File: VX015691.D  
 Acq: 15 Apr 2020 18:16

Tgt Ion: 75 Resp: 421541  
 Ion Ratio Lower Upper  
 75 100  
 53 0.2 80.1 120.1#  
 89 0.0 36.1 54.1#

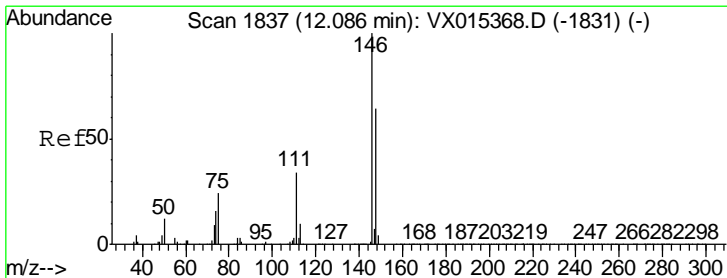
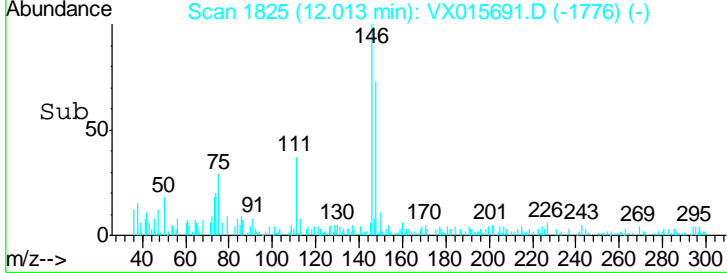
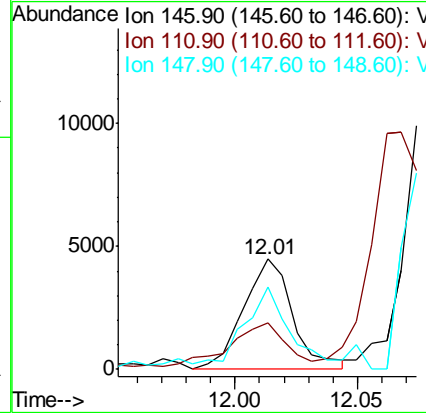
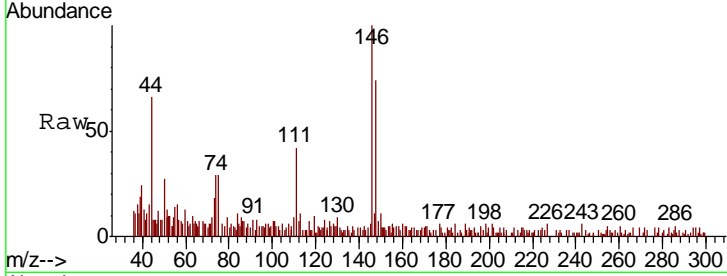




#87  
 1,3-Dichlorobenzene  
 Concen: 0.225 ug/l  
 RT: 12.01 min Scan# 1825  
 Delta R.T. 0.00 min  
 Lab File: VX015691.D  
 Acq: 15 Apr 2020 18:16

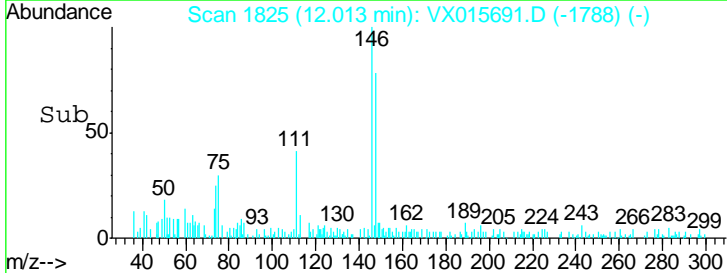
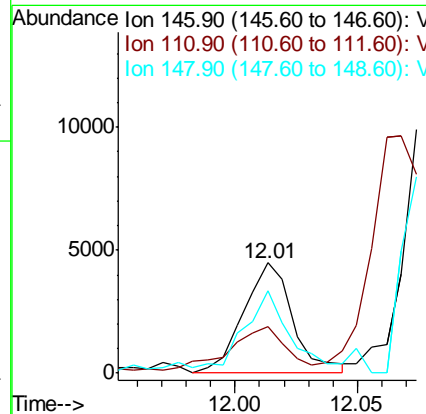
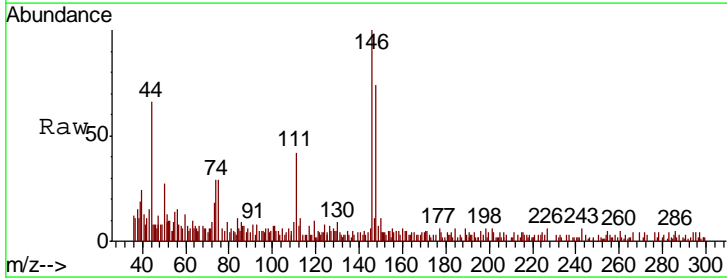
Instrument :  
 MSVOA\_X  
 ClientSampled :  
 SS037MW307-200409

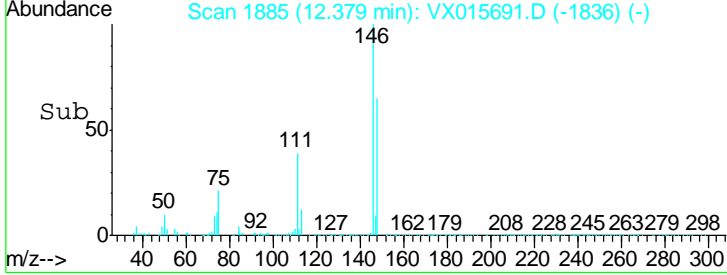
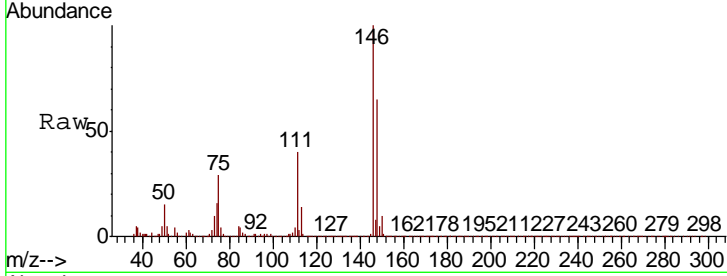
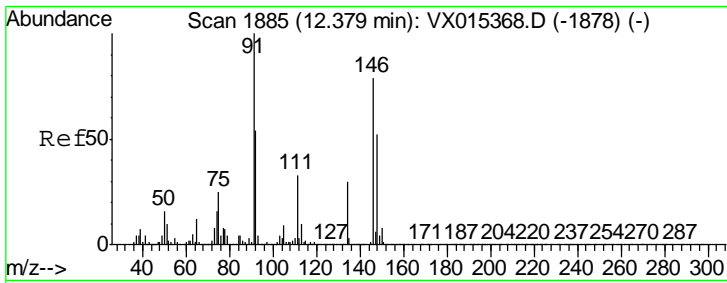
Tgt Ion	Resp	Lower	Upper
146	100		
111	44.6	20.3	60.9
148	69.2	31.3	93.9



#88  
 1,4-Dichlorobenzene  
 Concen: 0.221 ug/l  
 RT: 12.01 min Scan# 1825  
 Delta R.T. -0.07 min  
 Lab File: VX015691.D  
 Acq: 15 Apr 2020 18:16

Tgt Ion	Resp	Lower	Upper
146	100		
111	44.6	19.1	57.5
148	60.8	32.4	97.2





#91  
 1,2-Dichlorobenzene  
 Concen: 5.404 ug/l  
 RT: 12.38 min Scan# 1885  
 Delta R.T. -0.00 min  
 Lab File: VX015691.D  
 Acq: 15 Apr 2020 18:16

Instrument : MSVOA\_X  
 ClientSampled : SS037MW307-200409

Tot Ion	Ion	Ratio	Lower	Upper
148344	146	100		
	111	39.6	21.0	63.0
	148	63.5	32.4	97.0

