

Data Path : Z:\voasrv\HPCHEM1\MSVOA\_X\Data\VX041522\  
 Data File : VX028124.D  
 Acq On : 15 Apr 2022 11:29  
 Operator : JC/MD  
 Sample : VX0415WBL01  
 Misc : 5.0mL/MSVOA\_X/WATER  
 ALS Vial : 4 Sample Multiplier: 1

Instrument :  
 MSVOA\_X  
 ClientSampleId :  
 VX0415WBL01

Integration Parameters: RTEINT.P

Integrator: RTE  
 Smoothing : ON Filtering: 5  
 Sampling : 1 Min Area: 3 % of largest Peak  
 Start Thrs: 0.2 Max Peaks: 100  
 Stop Thrs : 0 Peak Location: TOP

If leading or trailing edge < 100 prefer < Baseline drop else tangent >  
 Peak separation: 5

Method : Z:\voasrv\HPCHEM1\MSVOA\_X\Method\82X041222W.M  
 Title : SW846 8260

Signal : TIC: VX028124.D\data.ms

peak #	R.T. min	first scan	max scan	last scan	PK TY	peak height	corr. area	corr. % max.	% of total
1	1.593	72	83	89	rBV3	15847	47448	3.81%	0.722%
2	5.385	692	705	721	rBV	150321	429947	34.55%	6.546%
3	5.556	721	733	749	rVB	225726	643721	51.73%	9.801%
4	5.958	788	799	816	rBV	153270	410737	33.00%	6.254%
5	6.763	920	931	948	rBV	371569	879538	70.67%	13.391%
6	8.647	1233	1240	1254	rBV	785423	1244502	100.00%	18.948%
7	10.055	1465	1471	1481	rBV	818256	1089847	87.57%	16.593%
8	11.079	1634	1639	1653	rBV	623656	816150	65.58%	12.426%
9	12.024	1788	1794	1802	rBV	825797	1006075	80.84%	15.318%

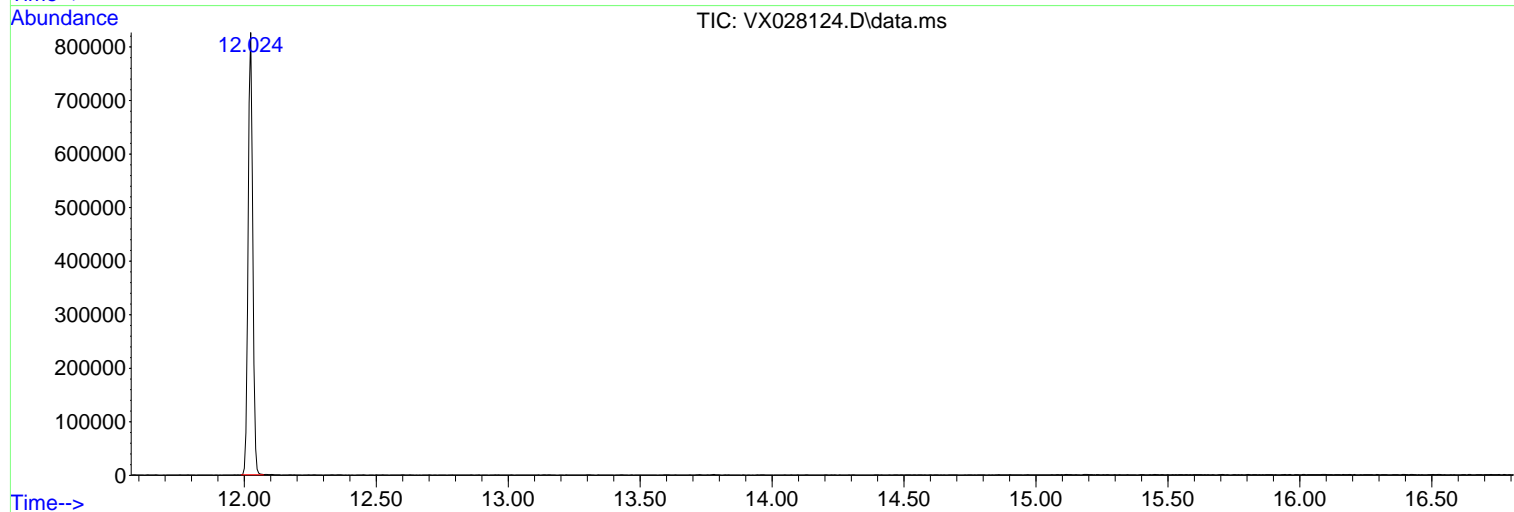
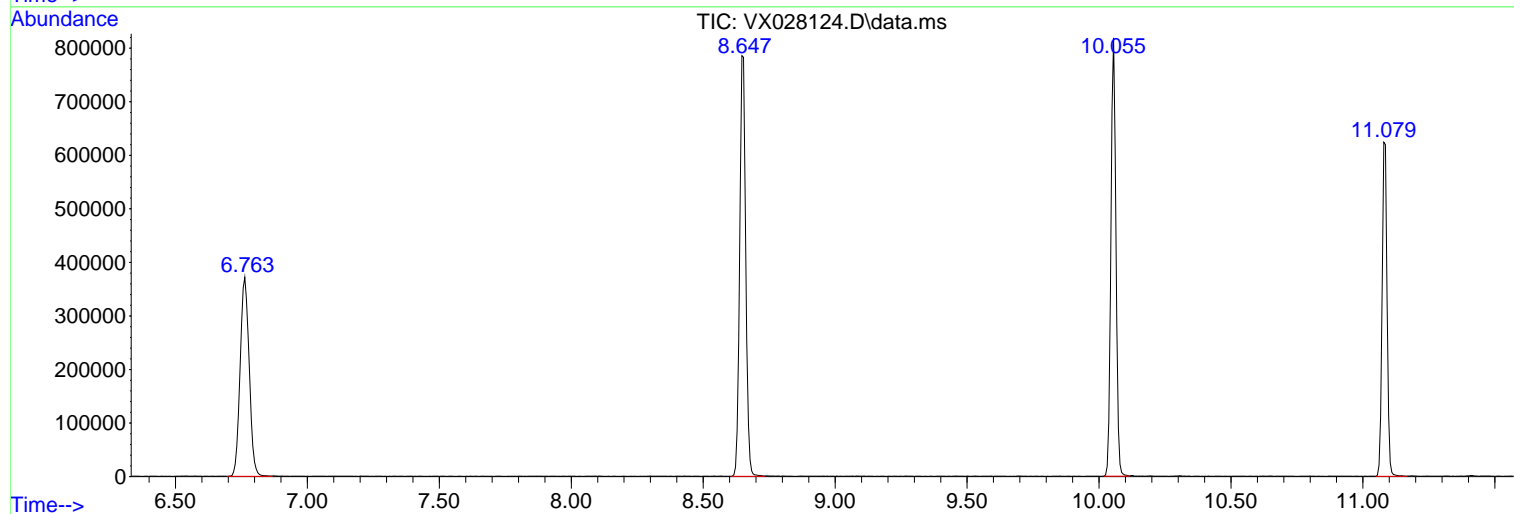
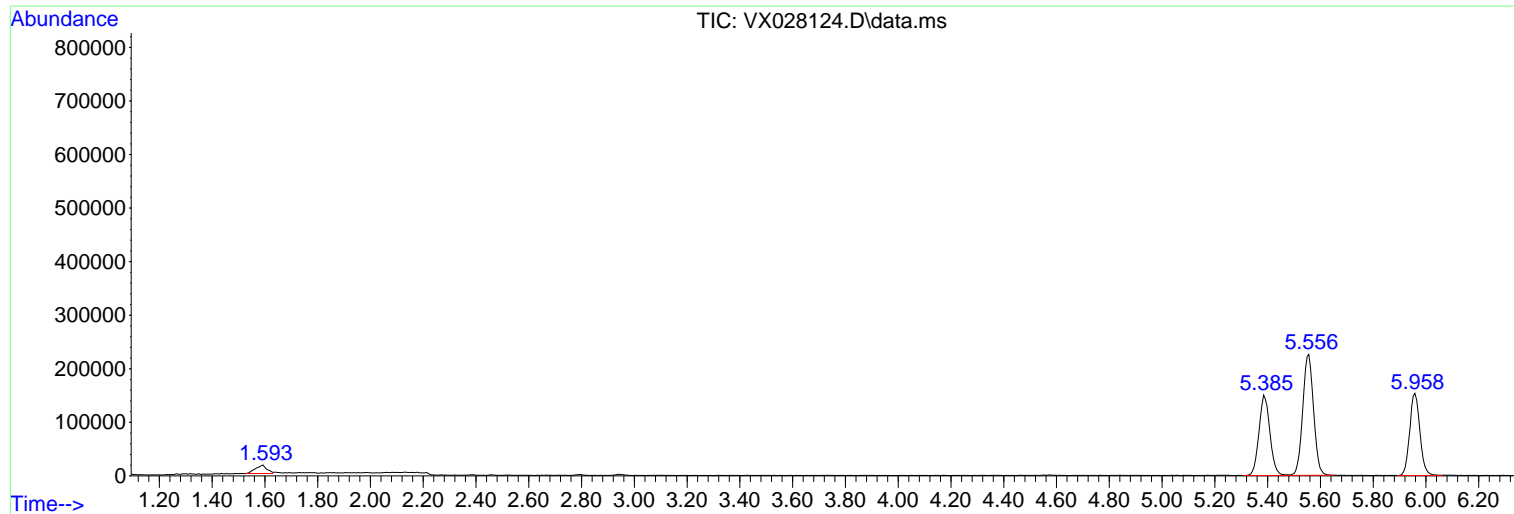
Sum of corrected areas: 6567965

Data Path : Z:\voasrv\HPCHEM1\MSVOA\_X\Data\VX041522\  
Data File : VX028124.D  
Acq On : 15 Apr 2022 11:29  
Operator : JC/MD  
Sample : VX0415WBL01  
Misc : 5.0mL/MSVOA\_X/WATER  
ALS Vial : 4 Sample Multiplier: 1

Instrument :  
MSVOA\_X  
ClientSampleId :  
VX0415WBL01

Quant Method : Z:\voasrv\HPCHEM1\MSVOA\_X\Method\82X041222W.M  
Quant Title : SW846 8260

TIC Library : C:\Database\NIST20.L  
TIC Integration Parameters: LSCINT.P



Library Search Compound Report

Data Path : Z:\voasrv\HPCHEM1\MSVOA\_X\Data\VX041522\  
Data File : VX028124.D  
Acq On : 15 Apr 2022 11:29  
Operator : JC/MD  
Sample : VX0415WBL01  
Misc : 5.0mL/MSVOA\_X/WATER  
ALS Vial : 4 Sample Multiplier: 1

Instrument :  
MSVOA\_X  
ClientSampleId :  
VX0415WBL01

Quant Method : Z:\voasrv\HPCHEM1\MSVOA\_X\Method\82X041222W.M  
Quant Title : SW846 8260

TIC Library : C:\Database\NIST20.L  
TIC Integration Parameters: LSCINT.P

No Library Search Compounds Detected

\*\*\*\*\*

Data Path : Z:\voasrv\HPCHEM1\MSVOA\_X\Data\VX041522\  
Data File : VX028124.D  
Acq On : 15 Apr 2022 11:29  
Operator : JC/MD  
Sample : VX0415WBL01  
Misc : 5.0mL/MSVOA\_X/WATER  
ALS Vial : 4 Sample Multiplier: 1

Instrument :  
MSVOA\_X  
ClientSampleId :  
VX0415WBL01

Quant Method : Z:\voasrv\HPCHEM1\MSVOA\_X\Method\82X041222W.M  
Quant Title : SW846 8260

TIC Library : C:\Database\NIST20.L  
TIC Integration Parameters: LSCINT.P

TIC Top Hit name	RT	EstConc	Units	Response	--Internal Standard--			
					#	RT	Resp	Conc

---