

Data Path : Z:\VOASRV\HPCHEM1\MSVOA X\DATA\VX041619\
 Data File : VX008976.D
 Acq On : 16 Apr 2019 10:38
 Operator : JC/SP
 Sample : VX0416WBL01
 Misc : 5.0mL/MSVOA X/WATER
 ALS Vial : 3 Sample Multiplier: 1

Instrument :
 MSVOA_X
 ClientSampleId :
 VX0416WBL01

Integration Parameters: RTEINT.P
 Integrator: RTE
 Smoothing : ON Filtering: 5
 Sampling : 1 Min Area: 3 % of largest Peak
 Start Thrs: 0.2 Max Peaks: 100
 Stop Thrs : 0 Peak Location: TOP

If leading or trailing edge < 100 prefer < Baseline drop else tangent >
 Peak separation: 5

Method : Z:\VOASRV\HPCHEM1\MSVOA_X\METHOD\82X041519W.M
 Title : SW846 8260

Signal : TIC

peak #	R.T. min	first scan	max scan	last scan	PK TY	peak height	corr. area	corr. % max.	% of total
1	5.495	698	712	726	rBV	130788	378514	29.80%	5.976%
2	5.659	726	739	753	rVB	244940	692609	54.52%	10.934%
3	6.055	793	804	822	rBV	166833	438425	34.51%	6.922%
4	6.854	923	935	949	rBV	388210	915468	72.06%	14.453%
5	8.713	1231	1240	1256	rBV	816541	1270394	100.00%	20.056%
6	10.110	1461	1469	1480	rBV	765546	1022291	80.47%	16.139%
7	11.134	1631	1637	1648	rBV	595881	753073	59.28%	11.889%
8	12.073	1786	1791	1800	rBV	664908	863446	67.97%	13.631%

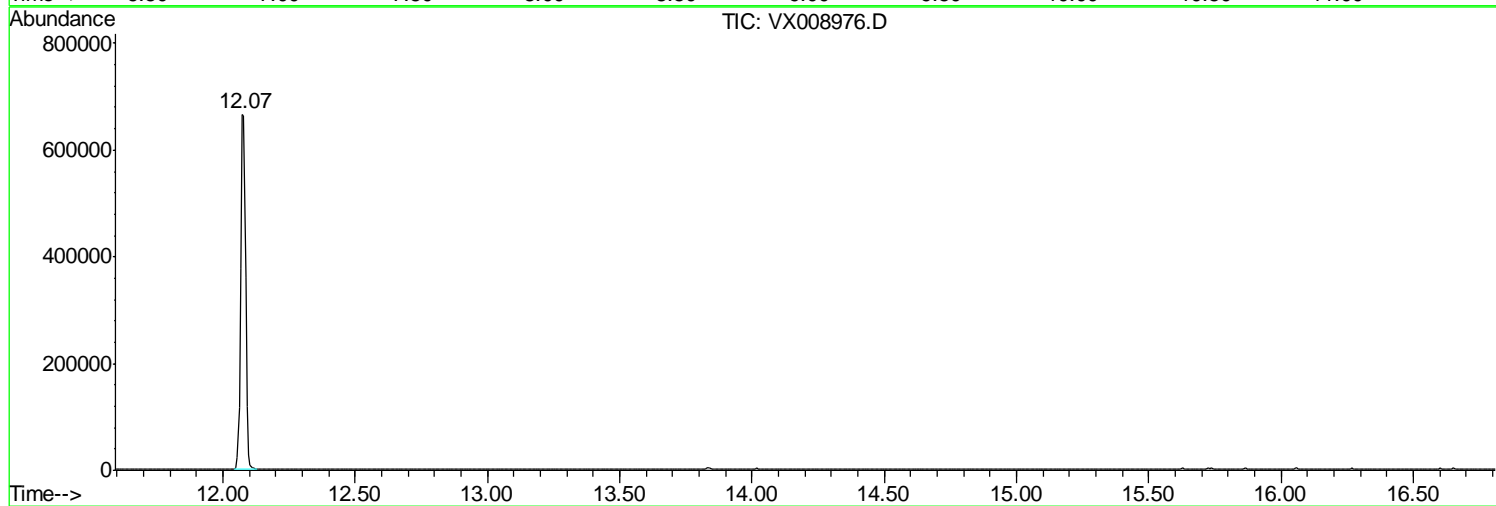
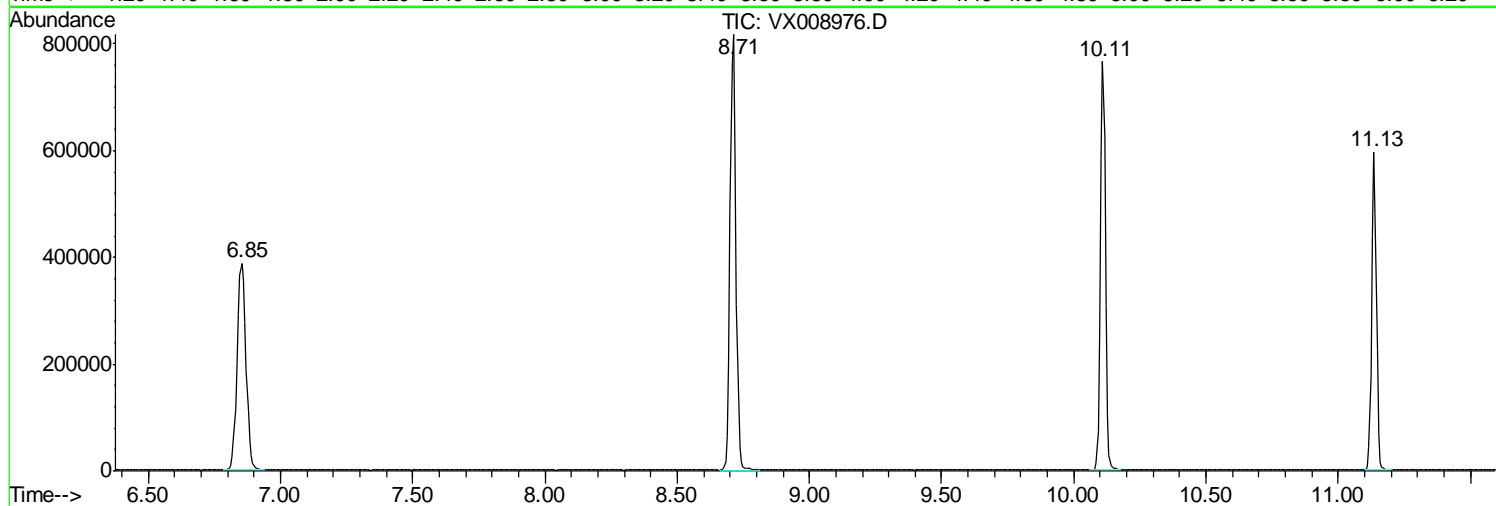
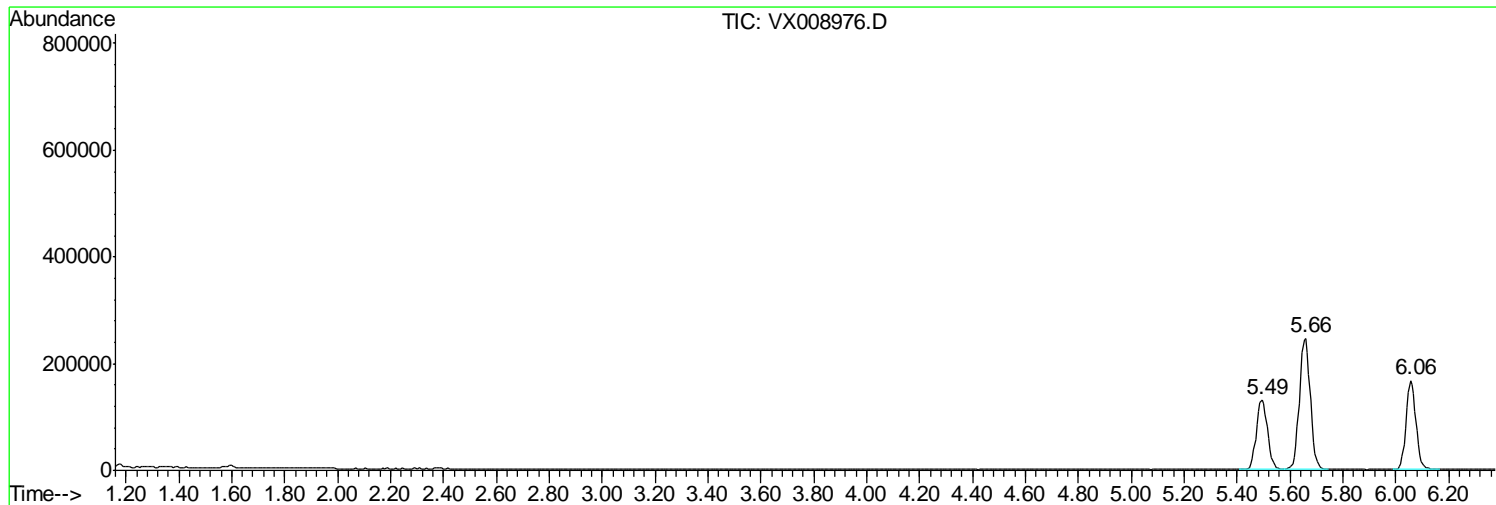
Sum of corrected areas: 6334220

Data Path : Z:\VOASRV\HPCHEM1\MSVOA X\DATA\VX041619\
Data File : VX008976.D
Acq On : 16 Apr 2019 10:38
Operator : JC/SP
Sample : VX0416WBL01
Misc : 5.0mL/MSVOA X/WATER
ALS Vial : 3 Sample Multiplier: 1

Instrument :
MSVOA_X
ClientSampled :
VX0416WBL01

Quant Method : Z:\VOASRV\HPCHEM1\MSVOA_X\METHOD\82X041519W.M
Quant Title : SW846 8260

TIC Library : C:\DATABASE\NIST11.L
TIC Integration Parameters: LSCINT.P



Data Path : Z:\VOASRV\HPCHEM1\MSVOA_X\DATA\VX041619\
Data File : VX008976.D
Acq On : 16 Apr 2019 10:38
Operator : JC/SP
Sample : VX0416WBL01
Misc : 5.0mL/MSVOA_X/WATER
ALS Vial : 3 Sample Multiplier: 1

Instrument :
MSVOA_X
ClientSampleId :
VX0416WBL01

Quant Method : Z:\VOASRV\HPCHEM1\MSVOA_X\METHOD\82X041519W.M
Quant Title : SW846 8260

TIC Library : C:\DATABASE\NIST11.L
TIC Integration Parameters: LSCINT.P

No Library Search Compounds Detected

Data Path : Z:\VOASRV\HPCHEM1\MSVOA_X\DATA\VX041619\
Data File : VX008976.D
Acq On : 16 Apr 2019 10:38
Operator : JC/SP
Sample : VX0416WBL01
Misc : 5.0mL/MSVOA_X/WATER
ALS Vial : 3 Sample Multiplier: 1

Instrument :
MSVOA_X
ClientSampleId :
VX0416WBL01

Quant Method : Z:\VOASRV\HPCHEM1\MSVOA_X\METHOD\82X041519W.M
Quant Title : SW846 8260

TIC Library : C:\DATABASE\NIST11.L
TIC Integration Parameters: LSCINT.P

TIC Top Hit name	RT	EstConc	Units	Response	--Internal Standard--			
					#	RT	Resp	Conc
