

Data Path : Z:\voasrv\HPCHEM1\MSVOA_X\Data\VX041625\
 Data File : VX045808.D
 Acq On : 16 Apr 2025 15:21
 Operator : JC/MD
 Sample : Q1800-01
 Misc : 5.0mL/MSVOA_X/WATER
 ALS Vial : 13 Sample Multiplier: 1

Instrument :
 MSVOA_X
 ClientSampleId :
 WC-A4-01-G

Quant Time: Apr 17 01:37:21 2025
 Quant Method : Z:\voasrv\HPCHEM1\MSVOA_X\Method\82X040225W.M
 Quant Title : SW846 8260
 QLast Update : Wed Apr 02 03:11:43 2025
 Response via : Initial Calibration

Compound	R.T.	QIon	Response	Conc	Units	Dev(Min)
Internal Standards						
1) Pentafluorobenzene	5.544	168	66619	50.000	ug/l	0.00
34) 1,4-Difluorobenzene	6.757	114	132587	50.000	ug/l	0.00
63) Chlorobenzene-d5	10.049	117	124254	50.000	ug/l	0.00
72) 1,4-Dichlorobenzene-d4	12.018	152	58223	50.000	ug/l	0.00
System Monitoring Compounds						
33) 1,2-Dichloroethane-d4	5.952	65	67175	55.139	ug/l	0.00
Spiked Amount	50.000	Range 74 - 125	Recovery	=	110.280%	
35) Dibromofluoromethane	5.385	113	43199	45.922	ug/l	0.00
Spiked Amount	50.000	Range 75 - 124	Recovery	=	91.840%	
50) Toluene-d8	8.647	98	167959	51.153	ug/l	0.00
Spiked Amount	50.000	Range 86 - 113	Recovery	=	102.300%	
62) 4-Bromofluorobenzene	11.079	95	65675	54.913	ug/l	0.00
Spiked Amount	50.000	Range 77 - 121	Recovery	=	109.820%	
Target Compounds						
						Qvalue
11) Tert butyl alcohol	2.983	59	1487	9.082	ug/l #	75
14) Allyl chloride	2.648	41	472	0.311	ug/l #	53
16) Acetone	2.380	43	88755	177.417	ug/l	97
17) Carbon Disulfide	2.501	76	4081	2.066	ug/l #	94
18) Methyl Acetate	2.709	43	3090	2.683	ug/l	92
20) Methylene Chloride	2.782	84	2515	2.685	ug/l	90
23) Vinyl Acetate	3.867	43	1203	0.466	ug/l #	74
25) 2-Butanone	4.574	43	6279	8.575	ug/l	95
29) Tetrahydrofuran	5.031	42	155	0.326	ug/l #	35
31) Cyclohexane	5.544	56	2096	1.403	ug/l #	18
36) 1,1-Dichloropropene	5.544	75	6567	5.170	ug/l #	50
37) Ethyl Acetate	4.574	43	6279	3.923	ug/l #	71
38) Carbon Tetrachloride	5.537	117	8008	5.834	ug/l #	15
40) Benzene	6.043	78	7856	2.025	ug/l	94
51) 4-Methyl-2-Pentanone	8.574	43	2311	1.437	ug/l	100
52) Toluene	8.720	92	13290	5.662	ug/l	94
53) t-1,3-Dichloropropene	8.720	75	188	2.415	ug/l #	1
59) 2-Hexanone	9.457	43	932	0.783	ug/l #	45
67) Ethyl Benzene	10.195	91	49130	10.332	ug/l	96
68) m/p-Xylenes	10.299	106	18899	10.927	ug/l	98
69) o-Xylene	10.640	106	23256	13.650	ug/l	98
70) Styrene	10.640	104	1405	0.500	ug/l #	1
73) Isopropylbenzene	10.957	105	21955	4.708	ug/l	99
76) 1,2,3-Trichloropropane	11.079	75	38607	27.184	ug/l #	37
78) n-propylbenzene	11.305	91	9402	1.750	ug/l	100
79) 2-Chlorotoluene	11.378	91	6119	1.782	ug/l #	45
80) 1,3,5-Trimethylbenzene	11.451	105	14060	3.646	ug/l	99
81) trans-1,4-Dichloro-2-b...	11.079	75	38607	92.260	ug/l #	1
82) 4-Chlorotoluene	11.451	91	1927	0.503	ug/l #	48
83) tert-Butylbenzene	11.750	119	8394	2.199	ug/l #	42
84) 1,2,4-Trimethylbenzene	11.750	105	74244	19.181	ug/l	99
85) sec-Butylbenzene	11.750	105	74244	15.832	ug/l #	58
86) p-Isopropyltoluene	11.969	119	7426	1.921	ug/l	93
89) n-Butylbenzene	12.311	91	3361	1.003	ug/l #	18
90) Hexachloroethane	12.408	117	11988	18.042	ug/l #	19
92) 1,2-Dibromo-3-Chloropr...	12.975	75	423	1.235	ug/l #	9

Data Path : Z:\voasrv\HPCHEM1\MSVOA_X\Data\VX041625\
Data File : VX045808.D
Acq On : 16 Apr 2025 15:21
Operator : JC/MD
Sample : Q1800-01
Misc : 5.0mL/MSVOA_X/WATER
ALS Vial : 13 Sample Multiplier: 1

Instrument :
MSVOA_X
ClientSampleId :
WC-A4-01-G

Quant Time: Apr 17 01:37:21 2025
Quant Method : Z:\voasrv\HPCHEM1\MSVOA_X\Method\82X040225W.M
Quant Title : SW846 8260
QLast Update : Wed Apr 02 03:11:43 2025
Response via : Initial Calibration

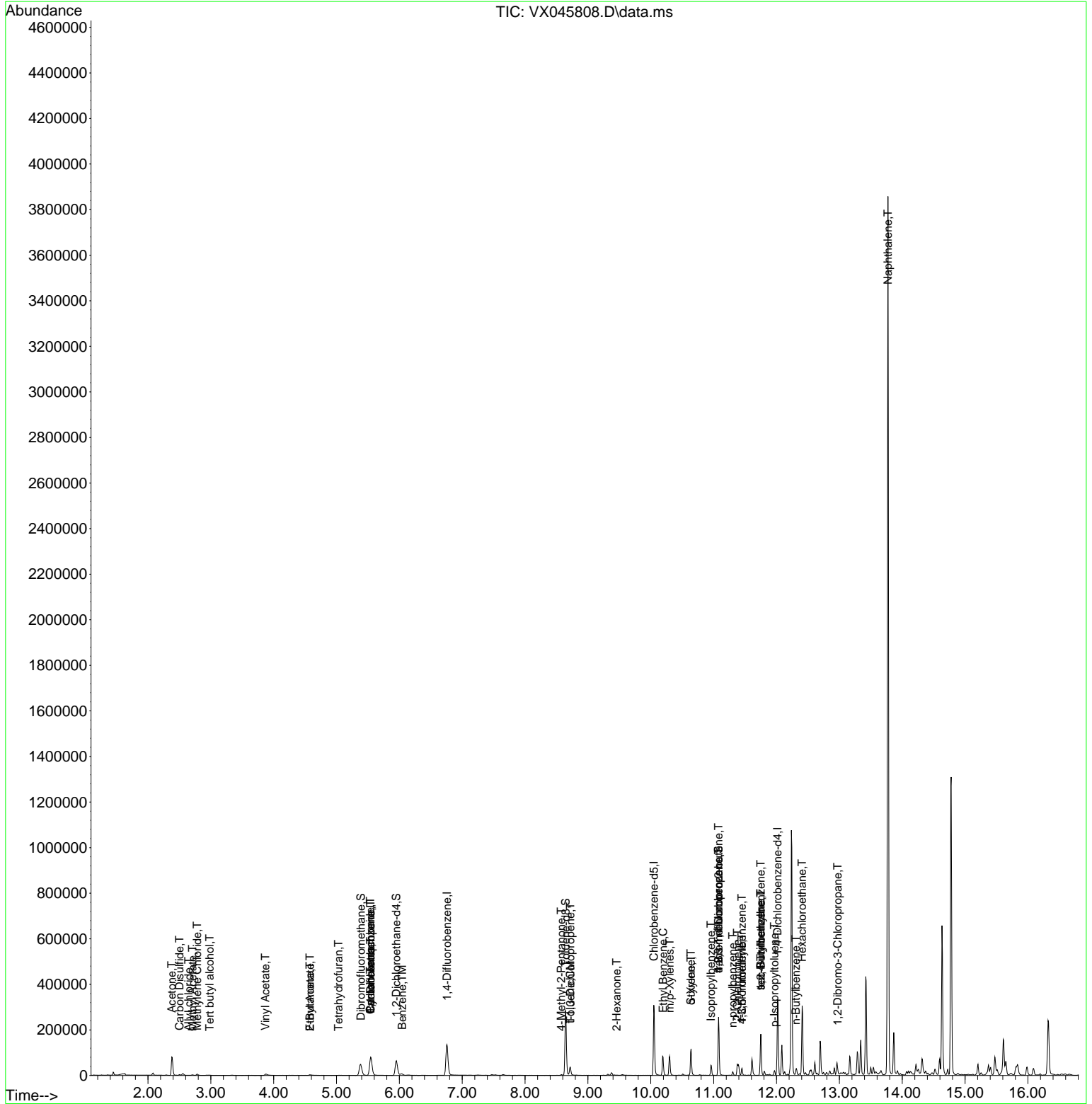
Compound	R.T.	QIon	Response	Conc Units	Dev(Min)
95) Naphthalene	13.774	128	2103763	520.785 ug/l	99

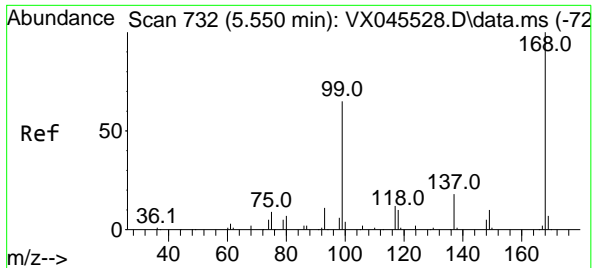
(#) = qualifier out of range (m) = manual integration (+) = signals summed

Data Path : Z:\voasrv\HPCHEM1\MSVOA_X\Data\VX041625\
 Data File : VX045808.D
 Acq On : 16 Apr 2025 15:21
 Operator : JC/MD
 Sample : Q1800-01
 Misc : 5.0mL/MSVOA_X/WATER
 ALS Vial : 13 Sample Multiplier: 1

Instrument :
 MSVOA_X
 ClientSampleId :
 WC-A4-01-G

Quant Time: Apr 17 01:37:21 2025
 Quant Method : Z:\voasrv\HPCHEM1\MSVOA_X\Method\82X040225W.M
 Quant Title : SW846 8260
 QLast Update : Wed Apr 02 03:11:43 2025
 Response via : Initial Calibration

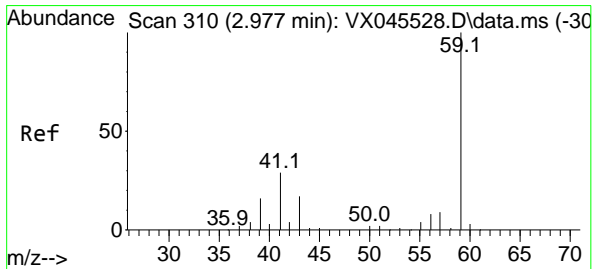
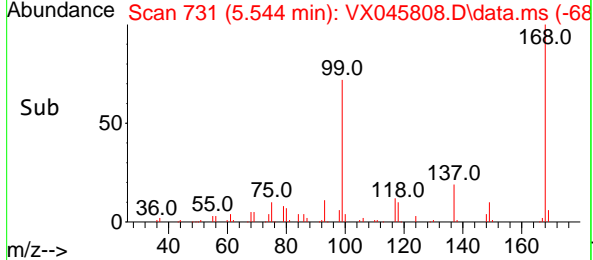
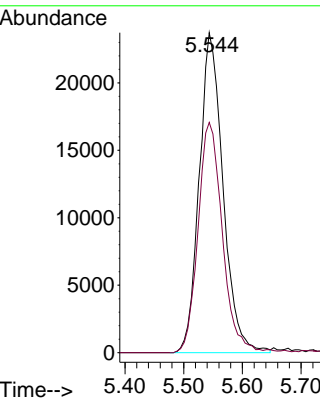
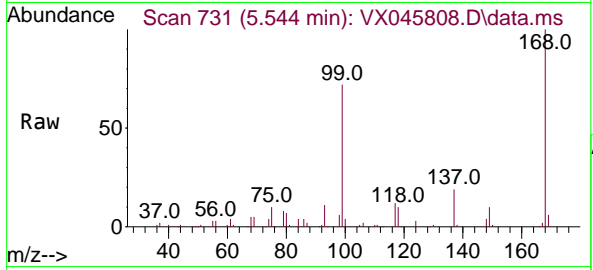




#1
 Pentafluorobenzene
 Concen: 50.000 ug/l
 RT: 5.544 min Scan# 71
 Delta R.T. -0.006 min
 Lab File: VX045808.D
 Acq: 16 Apr 2025 15:21

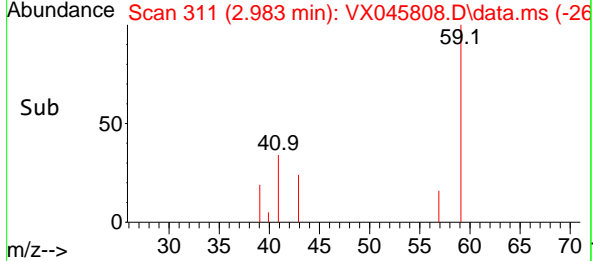
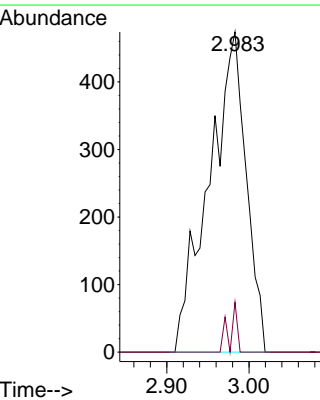
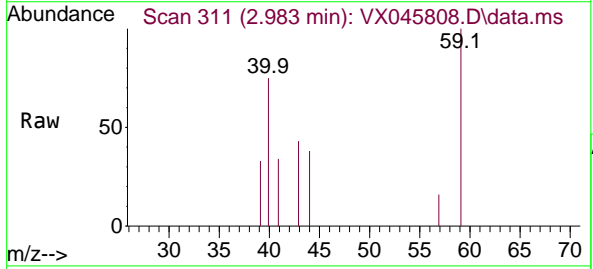
Instrument : MSVOA_X
 Client SampleId : WC-A4-01-G

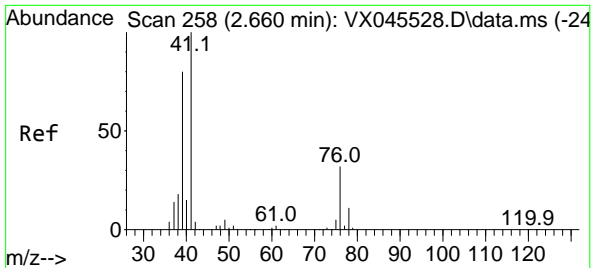
Tgt Ion:168 Resp: 66619
 Ion Ratio Lower Upper
 168 100
 99 72.0 52.3 78.5



#11
 Tert butyl alcohol
 Concen: 9.082 ug/l
 RT: 2.983 min Scan# 311
 Delta R.T. 0.006 min
 Lab File: VX045808.D
 Acq: 16 Apr 2025 15:21

Tgt Ion: 59 Resp: 1487
 Ion Ratio Lower Upper
 59 100
 57 1.3 8.6 12.8#



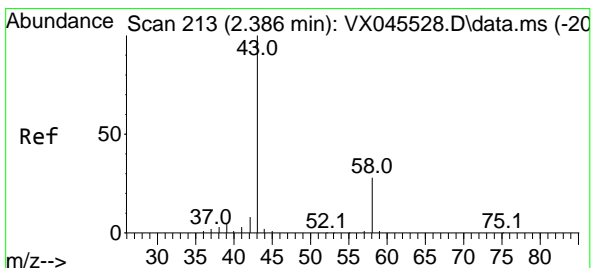
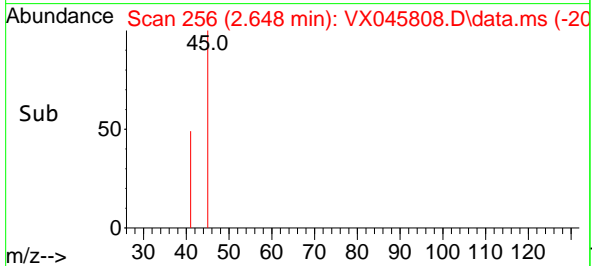
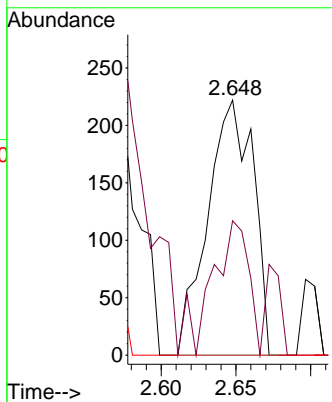
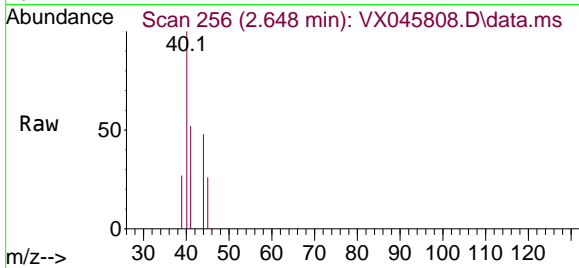


#14
 Allyl chloride
 Concen: 0.311 ug/l
 RT: 2.648 min Scan# 212
 Delta R.T. -0.012 min
 Lab File: VX045808.D
 Acq: 16 Apr 2025 15:21

Instrument : MSVOA_X
 ClientSampleId : WC-A4-01-G

Tgt Ion: 41 Resp: 472

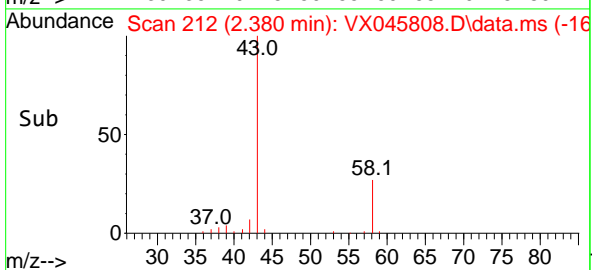
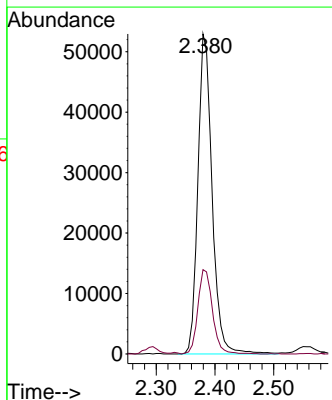
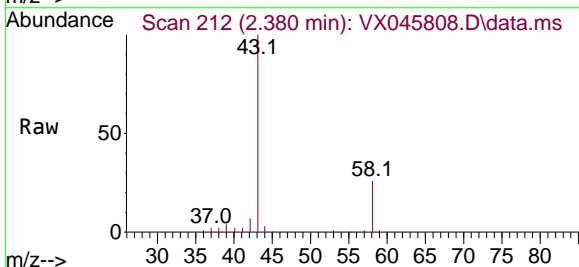
Ion	Ratio	Lower	Upper
41	100		
39	38.6	60.2	90.2#
76	0.0	24.6	36.8#

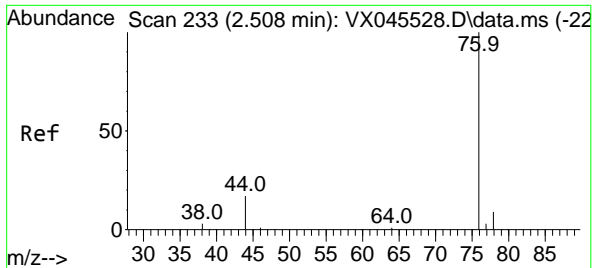


#16
 Acetone
 Concen: 177.417 ug/l
 RT: 2.380 min Scan# 212
 Delta R.T. -0.006 min
 Lab File: VX045808.D
 Acq: 16 Apr 2025 15:21

Tgt Ion: 43 Resp: 88755

Ion	Ratio	Lower	Upper
43	100		
58	26.2	22.3	33.5

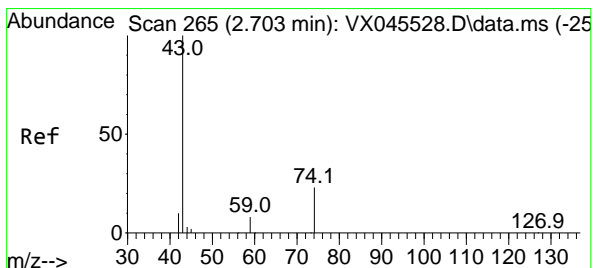
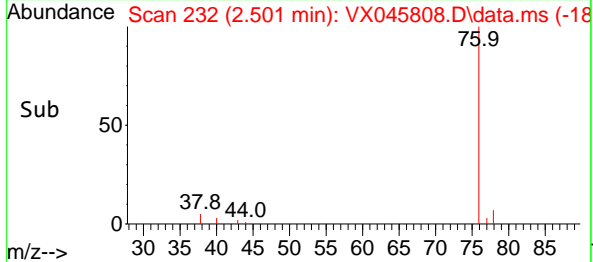
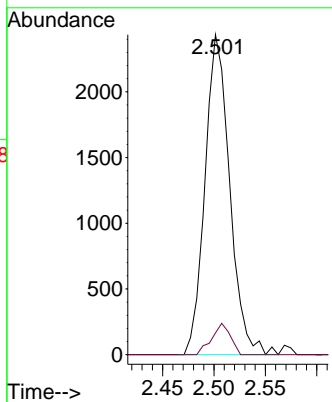
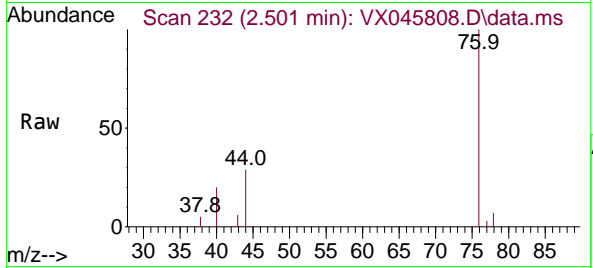




#17
 Carbon Disulfide
 Concen: 2.066 ug/l
 RT: 2.501 min Scan# 21
 Delta R.T. -0.006 min
 Lab File: VX045808.D
 Acq: 16 Apr 2025 15:21

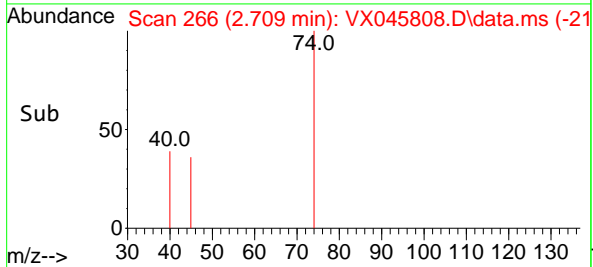
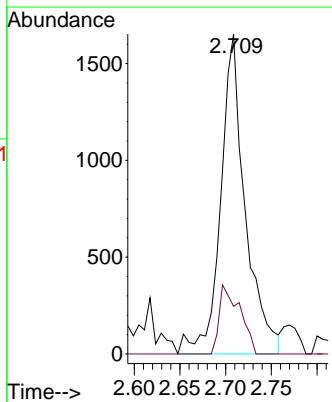
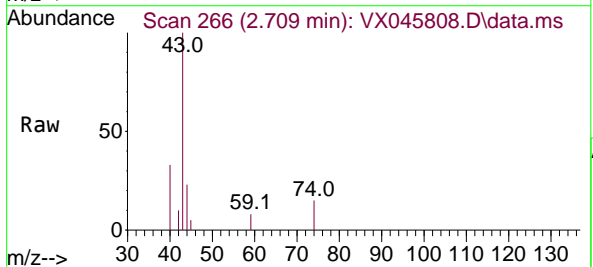
Instrument :
 MSVOA_X
 ClientSampleId :
 WC-A4-01-G

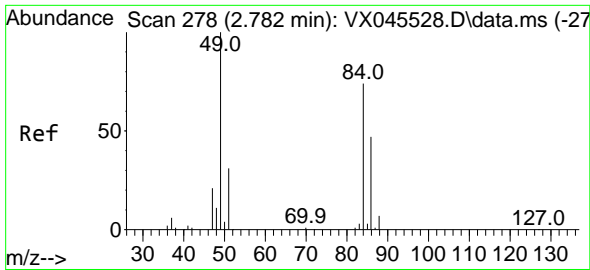
Tgt Ion: 76 Resp: 4081
 Ion Ratio Lower Upper
 76 100
 78 6.8 7.0 10.6#



#18
 Methyl Acetate
 Concen: 2.683 ug/l
 RT: 2.709 min Scan# 266
 Delta R.T. 0.006 min
 Lab File: VX045808.D
 Acq: 16 Apr 2025 15:21

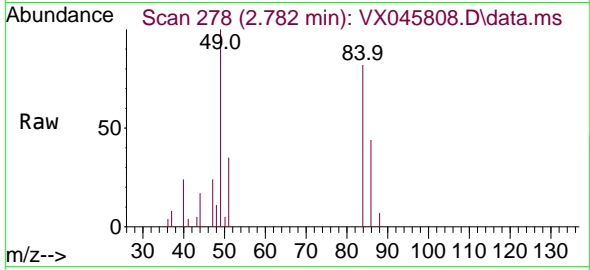
Tgt Ion: 43 Resp: 3090
 Ion Ratio Lower Upper
 43 100
 74 18.2 17.5 26.3





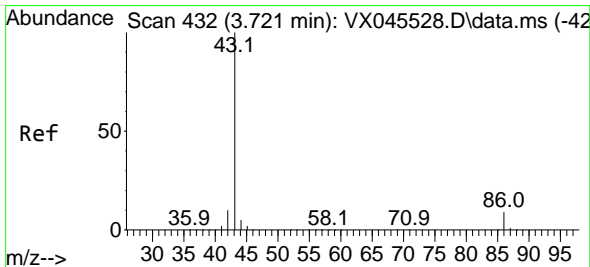
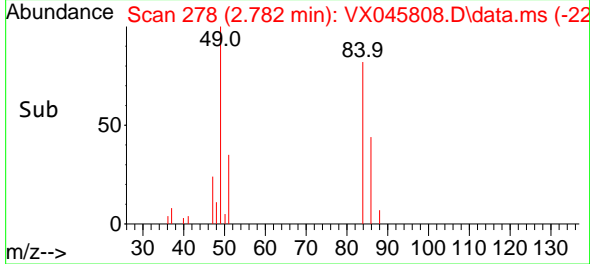
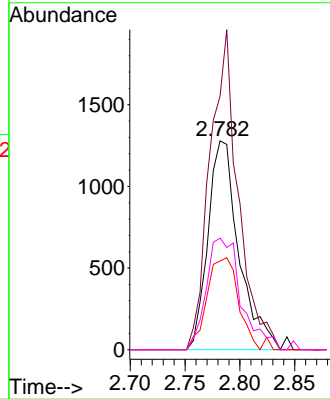
#20
 Methylene Chloride
 Concen: 2.685 ug/l
 RT: 2.782 min Scan# 21
 Delta R.T. -0.000 min
 Lab File: VX045808.D
 Acq: 16 Apr 2025 15:21

Instrument :
 MSVOA_X
 ClientSampleId :
 WC-A4-01-G



Tgt Ion: 84 Resp: 2515

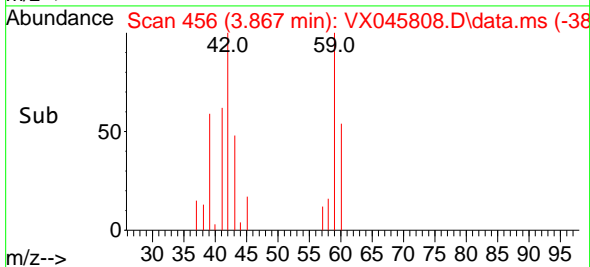
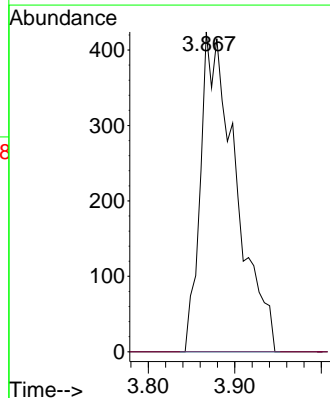
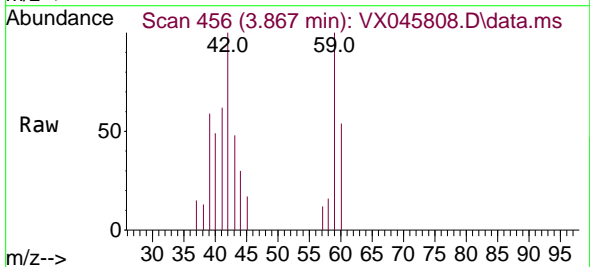
Ion	Ratio	Lower	Upper
84	100		
49	121.3	107.5	161.3
51	42.5	33.0	49.6
86	53.4	50.1	75.1

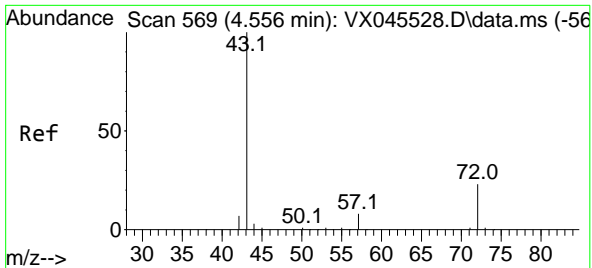


#23
 Vinyl Acetate
 Concen: 0.466 ug/l
 RT: 3.867 min Scan# 456
 Delta R.T. 0.146 min
 Lab File: VX045808.D
 Acq: 16 Apr 2025 15:21

Tgt Ion: 43 Resp: 1203

Ion	Ratio	Lower	Upper
43	100		
86	0.0	7.5	11.3#

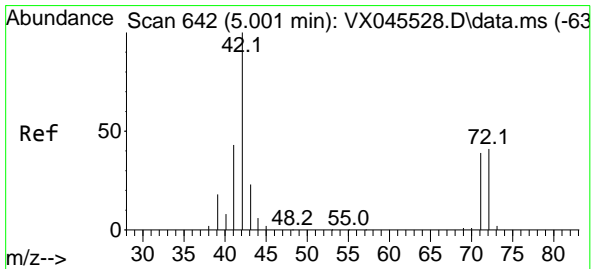
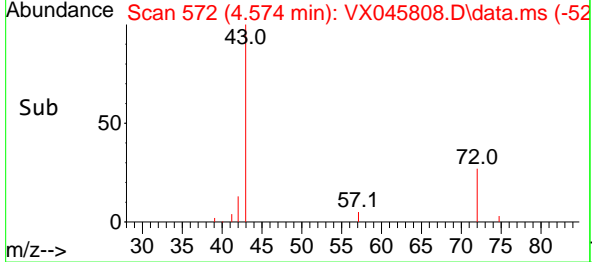
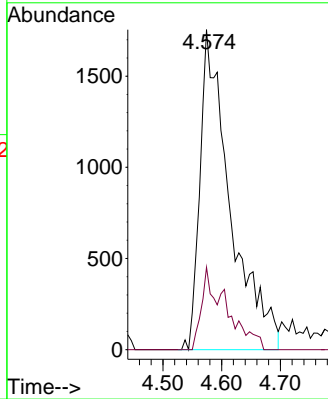
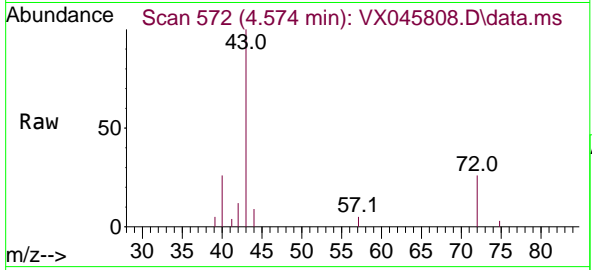




#25
 2-Butanone
 Concen: 8.575 ug/l
 RT: 4.574 min Scan# 51
 Delta R.T. 0.018 min
 Lab File: VX045808.D
 Acq: 16 Apr 2025 15:21

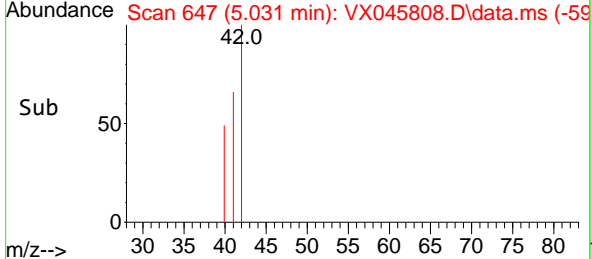
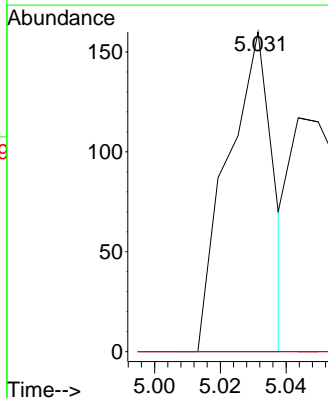
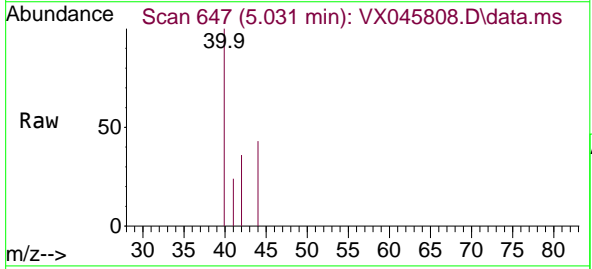
Instrument :
 MSVOA_X
 ClientSampleId :
 WC-A4-01-G

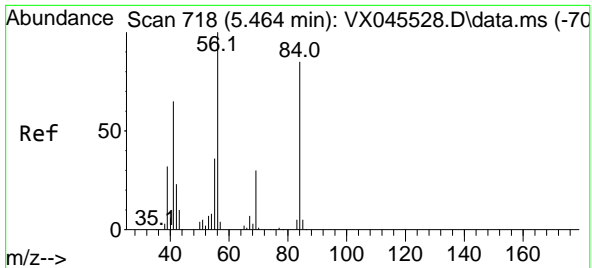
Tgt Ion: 43 Resp: 6279
 Ion Ratio Lower Upper
 43 100
 72 25.8 18.6 28.0



#29
 Tetrahydrofuran
 Concen: 0.326 ug/l
 RT: 5.031 min Scan# 647
 Delta R.T. 0.030 min
 Lab File: VX045808.D
 Acq: 16 Apr 2025 15:21

Tgt Ion: 42 Resp: 155
 Ion Ratio Lower Upper
 42 100
 72 0.0 33.4 50.0#
 71 0.0 31.4 47.0#



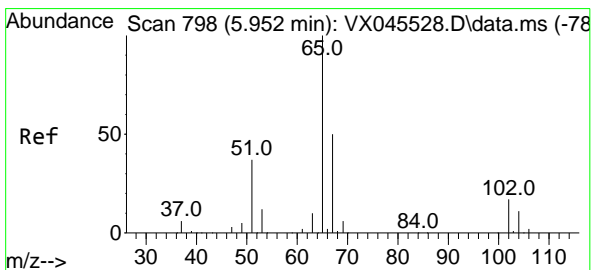
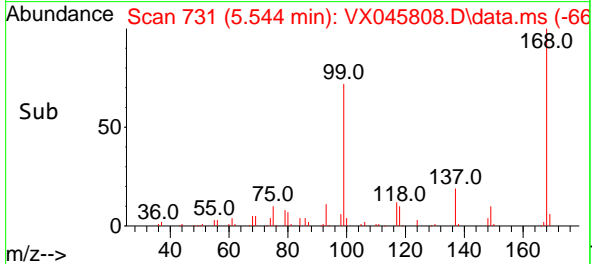
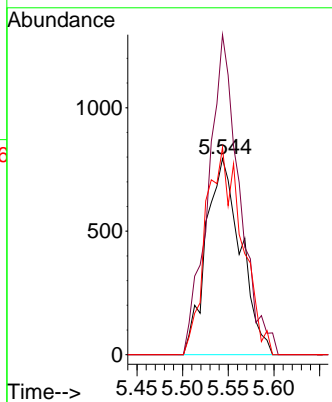
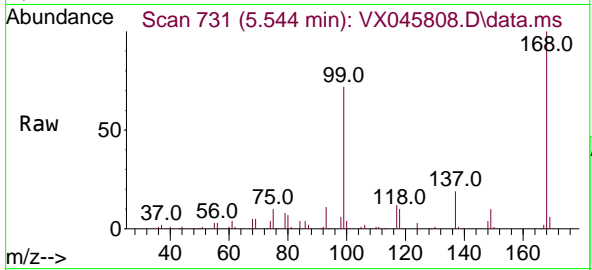


#31
 Cyclohexane
 Concen: 1.403 ug/l
 RT: 5.544 min Scan# 718
 Delta R.T. 0.079 min
 Lab File: VX045808.D
 Acq: 16 Apr 2025 15:21

Instrument : MSVOA_X
 ClientSampleId : WC-A4-01-G

Tgt Ion: 56 Resp: 2096

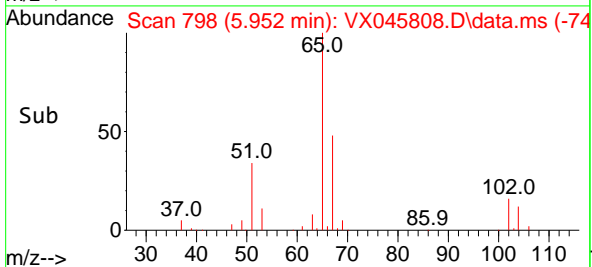
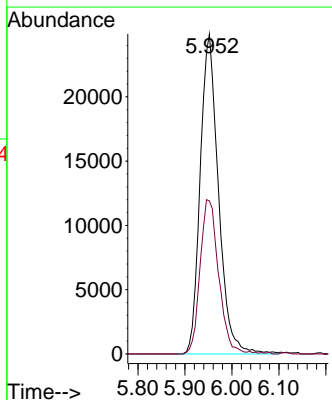
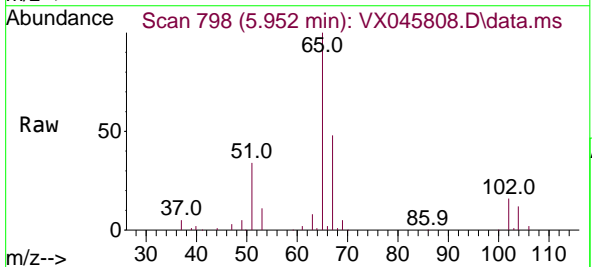
Ion	Ratio	Lower	Upper
56	100		
69	163.2	23.6	35.4#
84	105.8	67.7	101.5#

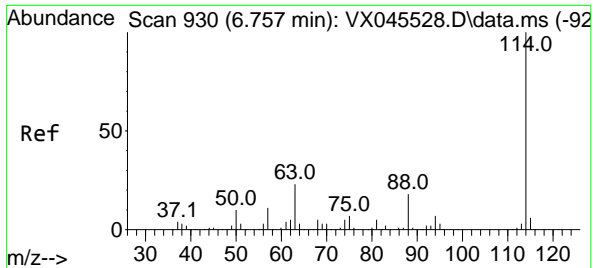


#33
 1,2-Dichloroethane-d4
 Concen: 55.139 ug/l
 RT: 5.952 min Scan# 798
 Delta R.T. -0.000 min
 Lab File: VX045808.D
 Acq: 16 Apr 2025 15:21

Tgt Ion: 65 Resp: 67175

Ion	Ratio	Lower	Upper
65	100		
67	48.9	0.0	99.0



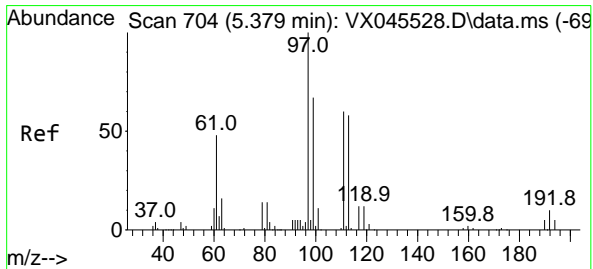
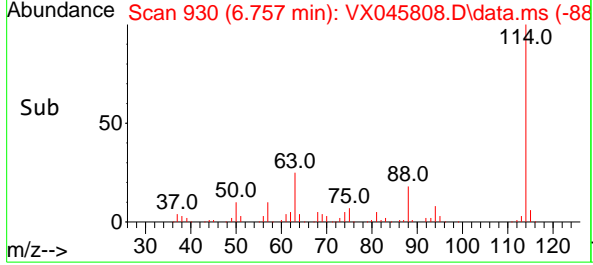
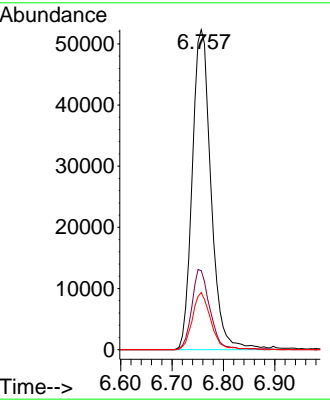
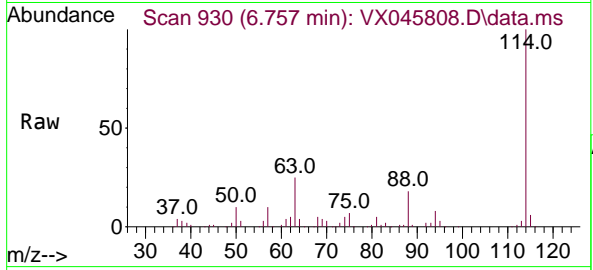


#34
 1,4-Difluorobenzene
 Concen: 50.000 ug/l
 RT: 6.757 min Scan# 91
 Delta R.T. -0.000 min
 Lab File: VX045808.D
 Acq: 16 Apr 2025 15:21

Instrument : MSVOA_X
 ClientSampleId : WC-A4-01-G

Tgt Ion:114 Resp: 132587

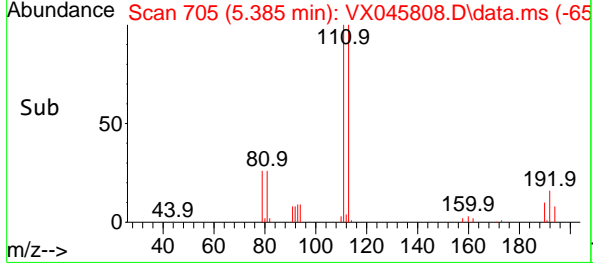
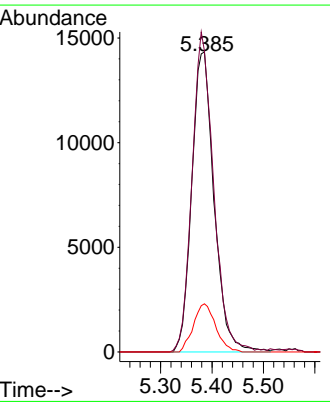
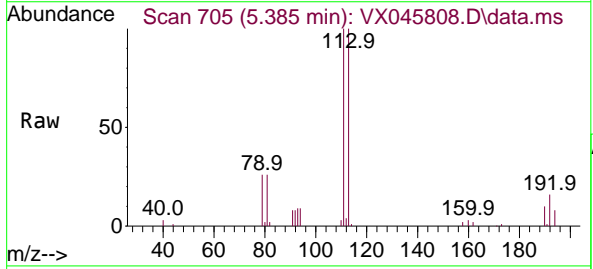
Ion	Ratio	Lower	Upper
114	100		
63	24.7	0.0	46.8
88	17.9	0.0	35.4

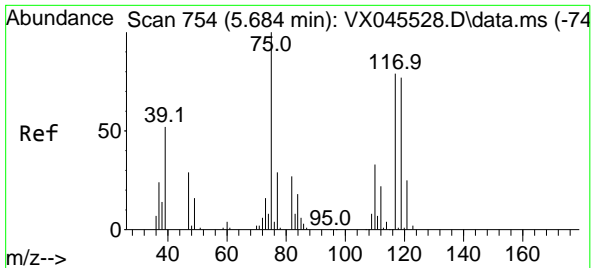


#35
 Dibromofluoromethane
 Concen: 45.922 ug/l
 RT: 5.385 min Scan# 705
 Delta R.T. 0.006 min
 Lab File: VX045808.D
 Acq: 16 Apr 2025 15:21

Tgt Ion:113 Resp: 43199

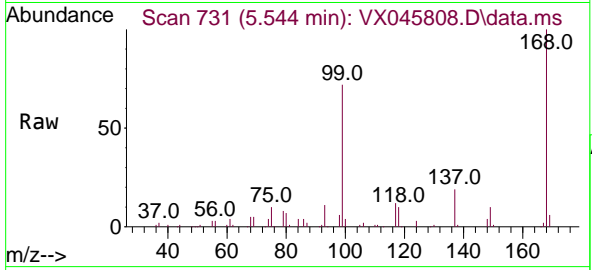
Ion	Ratio	Lower	Upper
113	100		
111	103.3	81.8	122.6
192	16.0	13.8	20.6



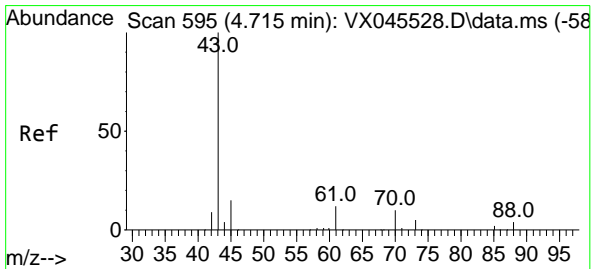
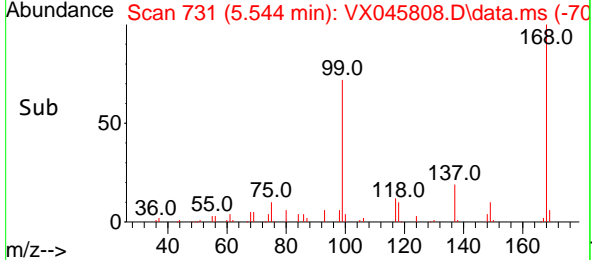
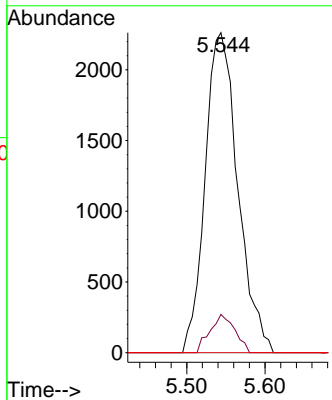


#36
 1,1-Dichloropropene
 Concen: 5.170 ug/l
 RT: 5.544 min Scan# 71
 Delta R.T. -0.140 min
 Lab File: VX045808.D
 Acq: 16 Apr 2025 15:21

Instrument : MSVOA_X
 ClientSampleId : WC-A4-01-G

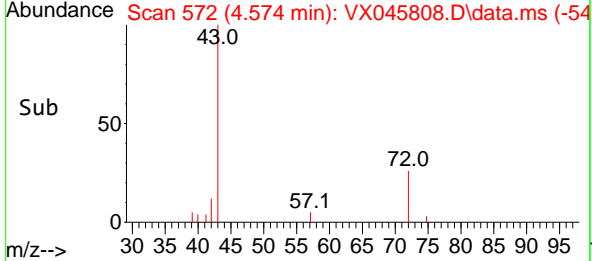
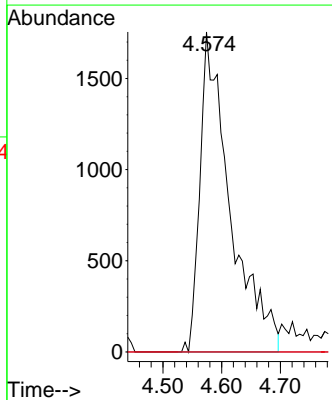
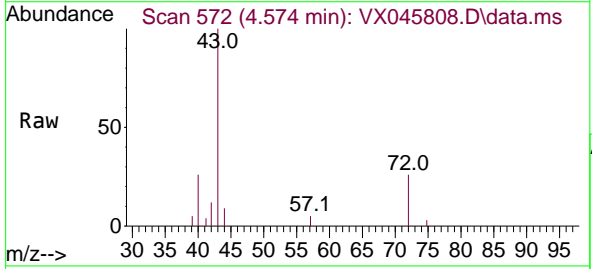


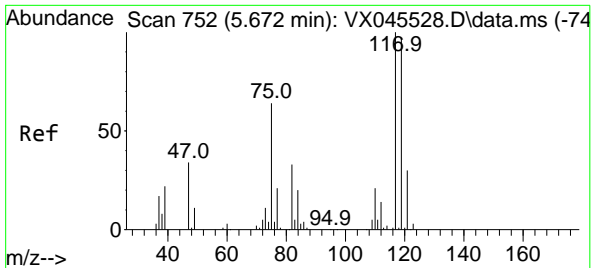
Tgt Ion	Resp	Lower	Upper
75	100		
110	9.1	16.9	50.6#
77	0.0	25.0	37.4#



#37
 Ethyl Acetate
 Concen: 3.923 ug/l
 RT: 4.574 min Scan# 572
 Delta R.T. -0.140 min
 Lab File: VX045808.D
 Acq: 16 Apr 2025 15:21

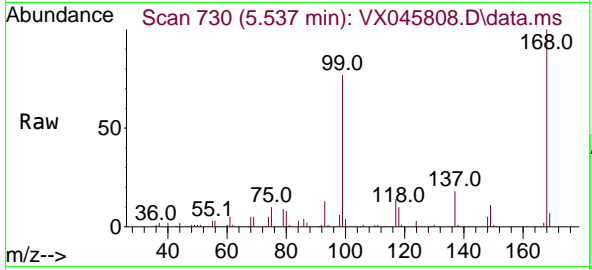
Tgt Ion	Resp	Lower	Upper
43	100		
61	0.0	9.9	14.9#
70	0.0	7.5	11.3#



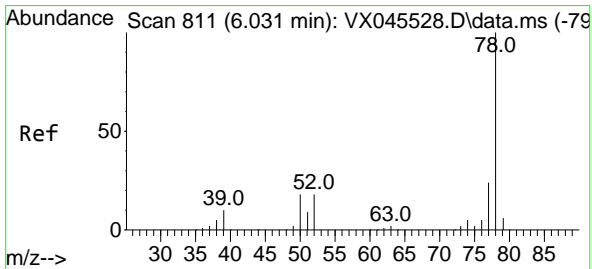
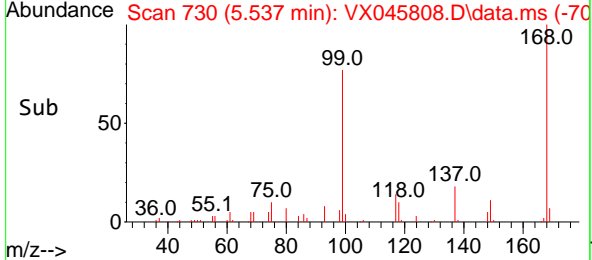
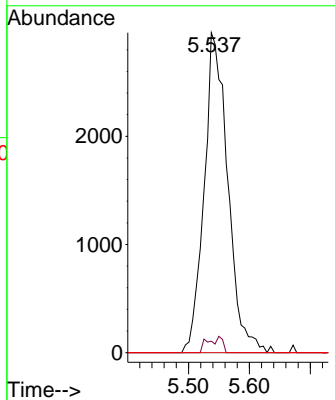


#38
 Carbon Tetrachloride
 Concen: 5.834 ug/l
 RT: 5.537 min Scan# 711
 Delta R.T. -0.134 min
 Lab File: VX045808.D
 Acq: 16 Apr 2025 15:21

Instrument :
 MSVOA_X
 ClientSampleId :
 WC-A4-01-G

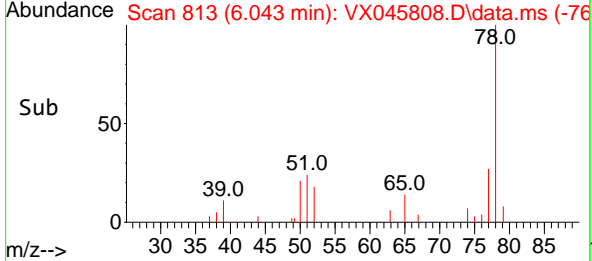
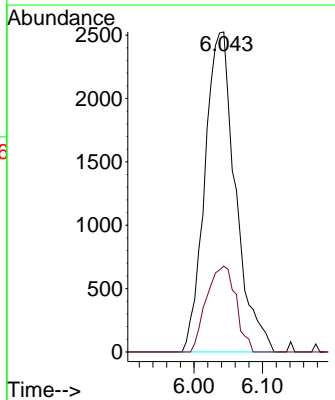
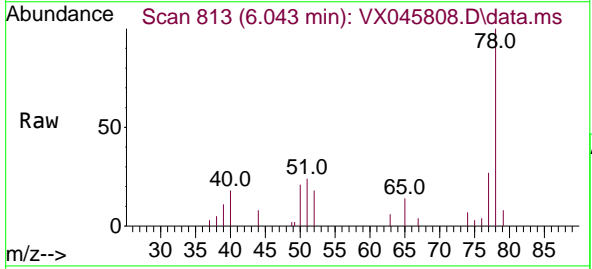


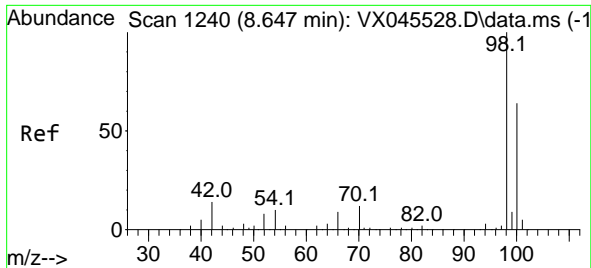
Tgt Ion:117 Resp: 8008
 Ion Ratio Lower Upper
 117 100
 119 3.6 76.9 115.3#
 121 0.0 24.2 36.2#



#40
 Benzene
 Concen: 2.025 ug/l
 RT: 6.043 min Scan# 813
 Delta R.T. 0.012 min
 Lab File: VX045808.D
 Acq: 16 Apr 2025 15:21

Tgt Ion: 78 Resp: 7856
 Ion Ratio Lower Upper
 78 100
 77 26.9 19.0 28.6

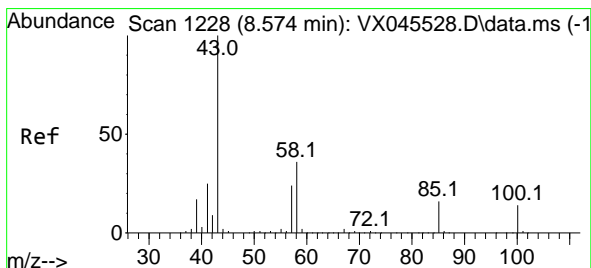
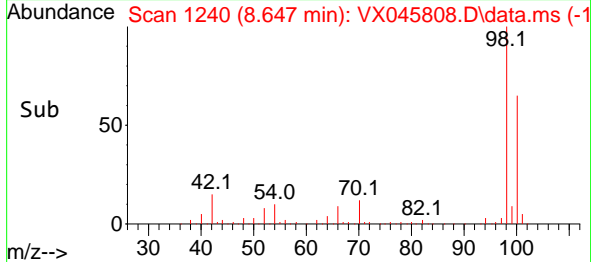
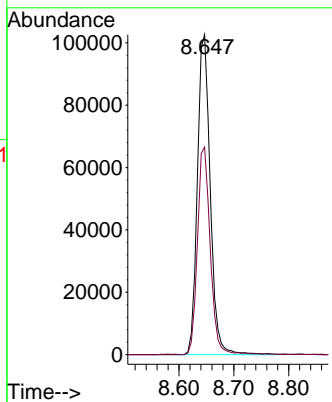
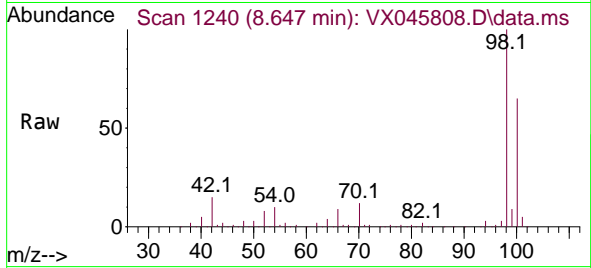




#50
 Toluene-d8
 Concen: 51.153 ug/l
 RT: 8.647 min Scan# 11
 Delta R.T. -0.000 min
 Lab File: VX045808.D
 Acq: 16 Apr 2025 15:21

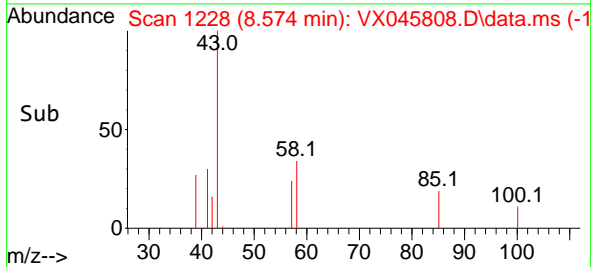
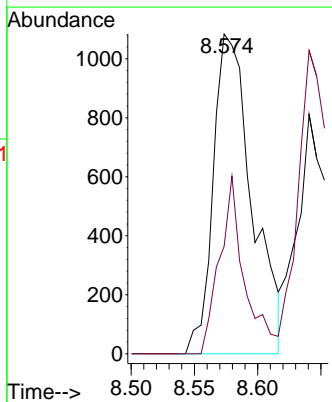
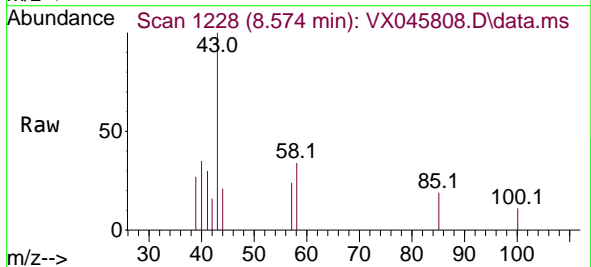
Instrument :
 MSVOA_X
 ClientSampleId :
 WC-A4-01-G

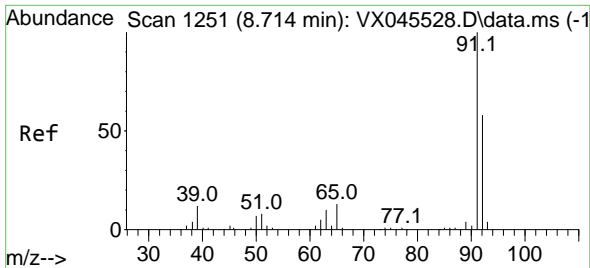
Tgt Ion: 98 Resp: 167959
 Ion Ratio Lower Upper
 98 100
 100 64.8 52.2 78.4



#51
 4-Methyl-2-Pentanone
 Concen: 1.437 ug/l
 RT: 8.574 min Scan# 1228
 Delta R.T. -0.000 min
 Lab File: VX045808.D
 Acq: 16 Apr 2025 15:21

Tgt Ion: 43 Resp: 2311
 Ion Ratio Lower Upper
 43 100
 58 35.9 28.5 42.7

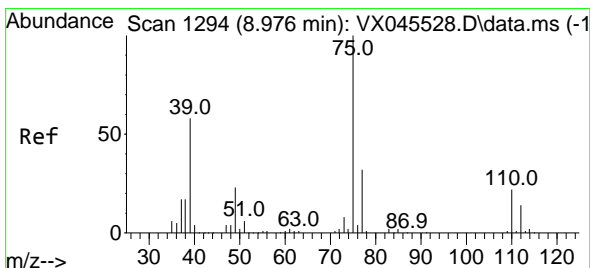
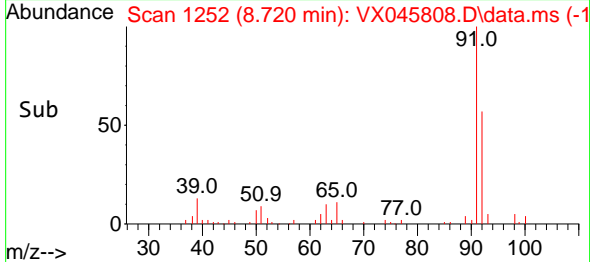
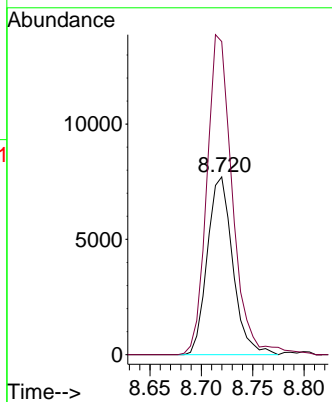
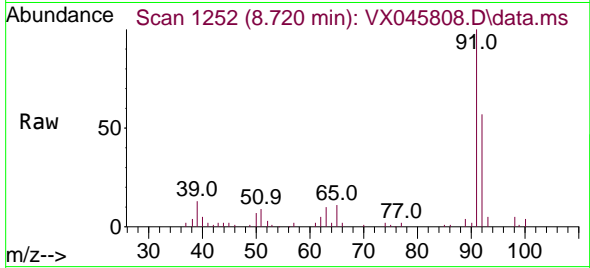




#52
 Toluene
 Concen: 5.662 ug/l
 RT: 8.720 min Scan# 1252
 Delta R.T. 0.006 min
 Lab File: VX045808.D
 Acq: 16 Apr 2025 15:21

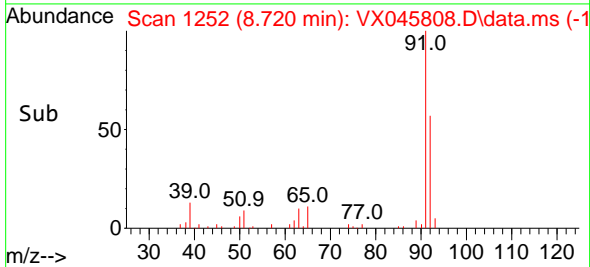
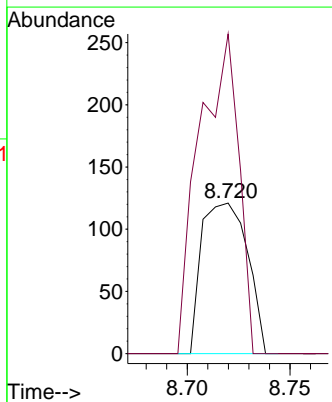
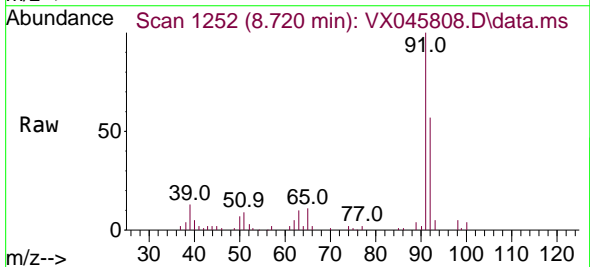
Instrument : MSVOA_X
 ClientSampleId : WC-A4-01-G

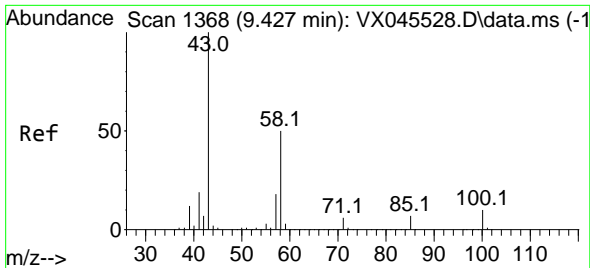
Tgt Ion: 92 Resp: 13290
 Ion Ratio Lower Upper
 92 100
 91 181.4 138.7 208.1



#53
 t-1,3-Dichloropropene
 Concen: 2.415 ug/l
 RT: 8.720 min Scan# 1252
 Delta R.T. -0.256 min
 Lab File: VX045808.D
 Acq: 16 Apr 2025 15:21

Tgt Ion: 75 Resp: 188
 Ion Ratio Lower Upper
 75 100
 77 212.4 25.4 38.0#

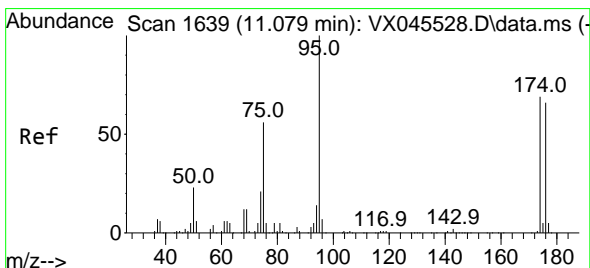
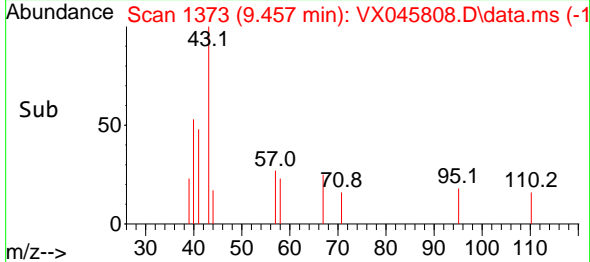
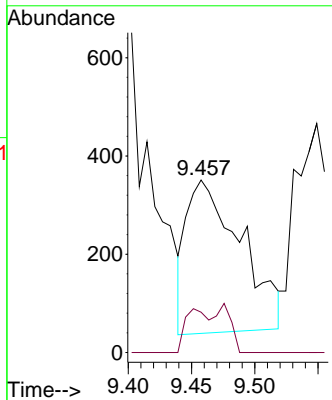
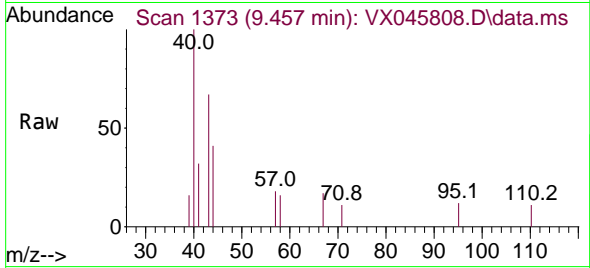




#59
 2-Hexanone
 Concen: 0.783 ug/l
 RT: 9.457 min Scan# 1111
 Delta R.T. 0.030 min
 Lab File: VX045808.D
 Acq: 16 Apr 2025 15:21

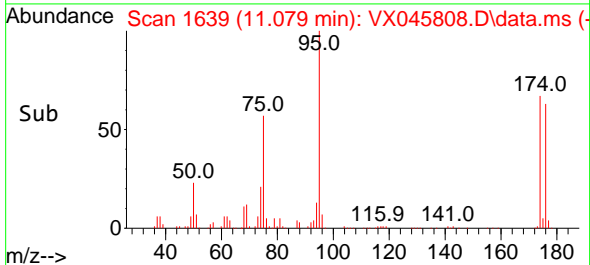
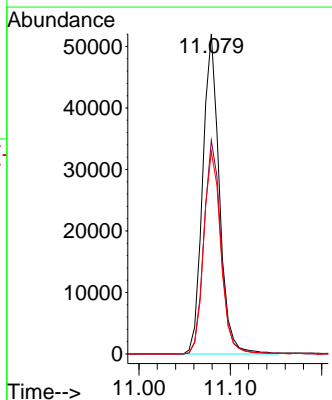
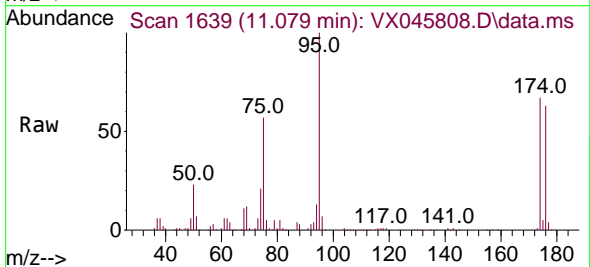
Instrument :
 MSVOA_X
 ClientSampleId :
 WC-A4-01-G

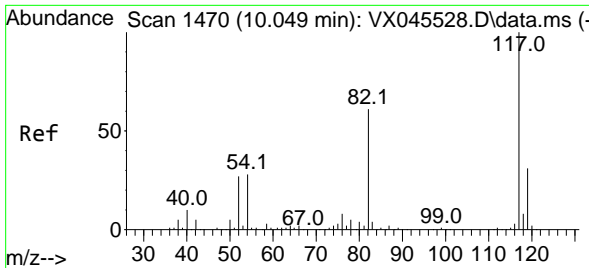
Tgt Ion: 43 Resp: 932
 Ion Ratio Lower Upper
 43 100
 58 12.1 24.9 74.6#



#62
 4-Bromofluorobenzene
 Concen: 54.913 ug/l
 RT: 11.079 min Scan# 1639
 Delta R.T. -0.000 min
 Lab File: VX045808.D
 Acq: 16 Apr 2025 15:21

Tgt Ion: 95 Resp: 65675
 Ion Ratio Lower Upper
 95 100
 174 68.2 0.0 135.8
 176 65.3 0.0 131.4



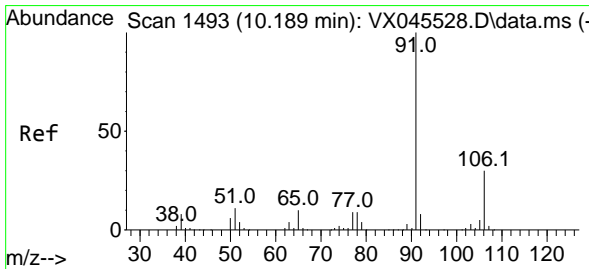
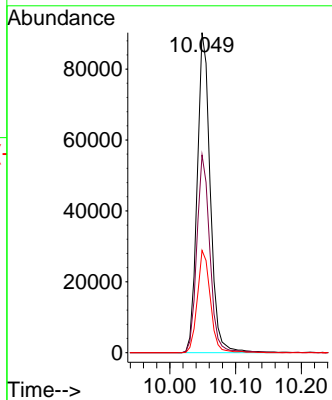
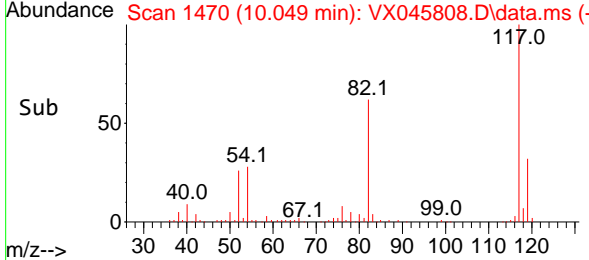
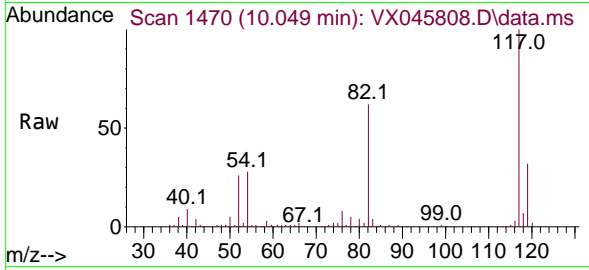


#63
 Chlorobenzene-d5
 Concen: 50.000 ug/l
 RT: 10.049 min Scan# 14
 Delta R.T. -0.000 min
 Lab File: VX045808.D
 Acq: 16 Apr 2025 15:21

Instrument : MSVOA_X
 ClientSampleId : WC-A4-01-G

Tgt Ion:117 Resp: 124254

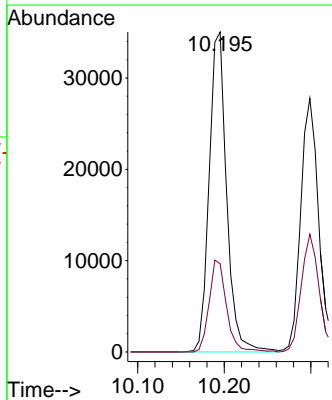
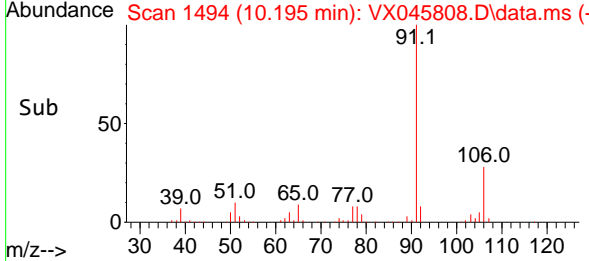
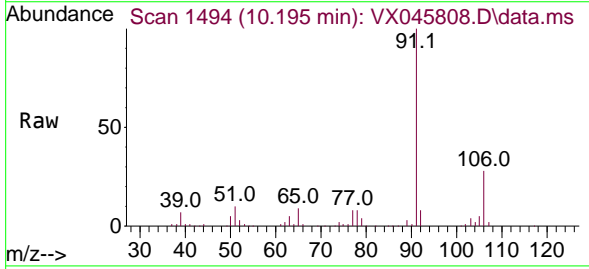
Ion	Ratio	Lower	Upper
117	100		
82	61.8	49.2	73.8
119	32.0	25.1	37.7

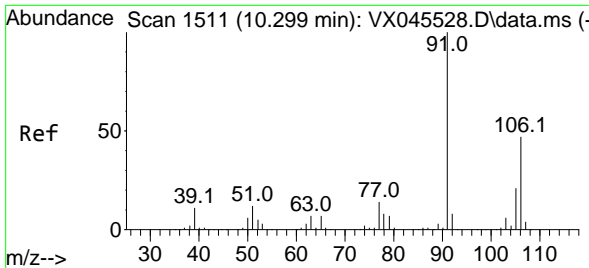


#67
 Ethyl Benzene
 Concen: 10.332 ug/l
 RT: 10.195 min Scan# 1494
 Delta R.T. 0.006 min
 Lab File: VX045808.D
 Acq: 16 Apr 2025 15:21

Tgt Ion: 91 Resp: 49130

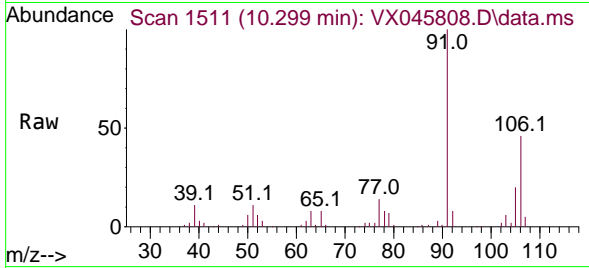
Ion	Ratio	Lower	Upper
91	100		
106	27.6	23.7	35.5



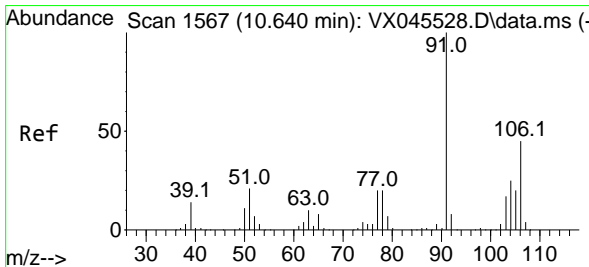
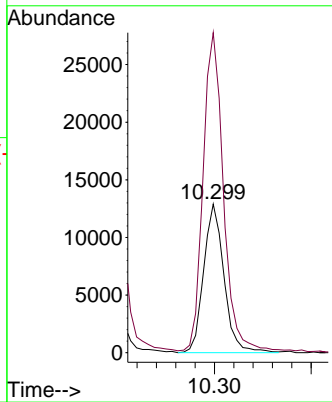
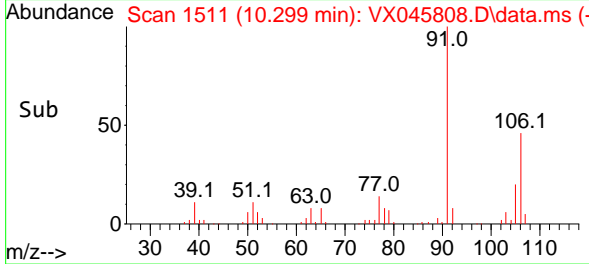


#68
 m/p-Xylenes
 Concen: 10.927 ug/l
 RT: 10.299 min Scan# 1511
 Delta R.T. -0.000 min
 Lab File: VX045808.D
 Acq: 16 Apr 2025 15:21

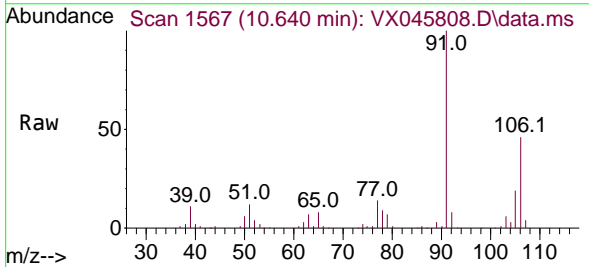
Instrument : MSVOA_X
 ClientSampleId : WC-A4-01-G



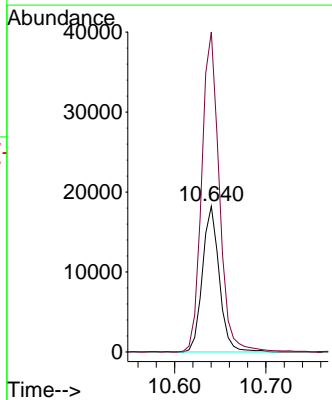
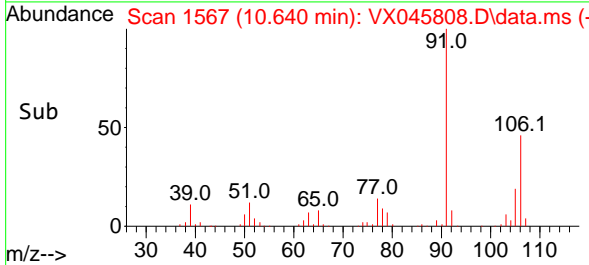
Tgt Ion:106 Resp: 18899
 Ion Ratio Lower Upper
 106 100
 91 218.1 172.6 258.8

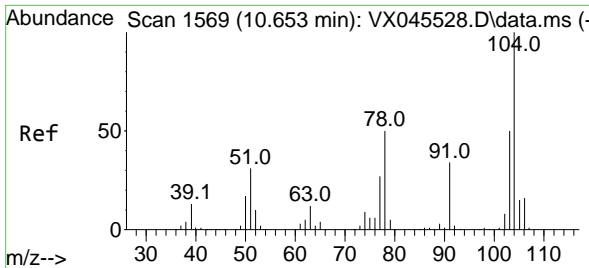


#69
 o-Xylene
 Concen: 13.650 ug/l
 RT: 10.640 min Scan# 1567
 Delta R.T. -0.000 min
 Lab File: VX045808.D
 Acq: 16 Apr 2025 15:21



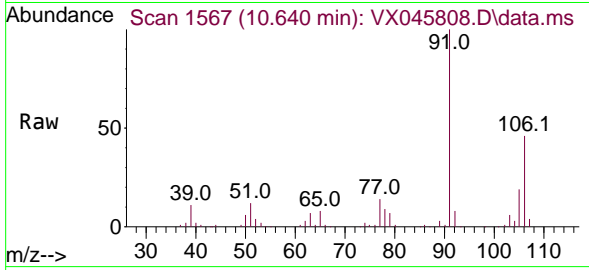
Tgt Ion:106 Resp: 23256
 Ion Ratio Lower Upper
 106 100
 91 230.0 113.6 340.6



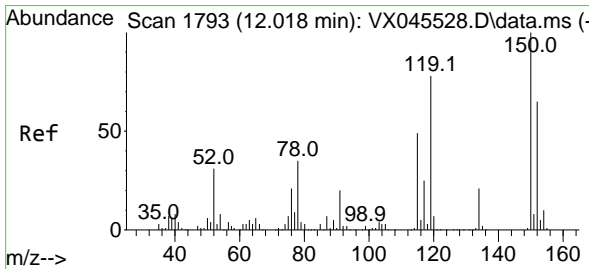
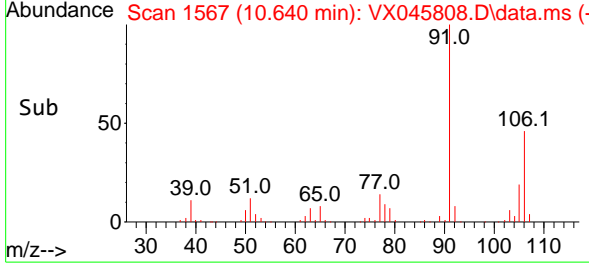
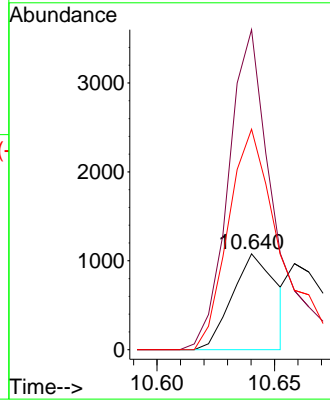


#70
 Styrene
 Concen: 0.500 ug/l
 RT: 10.640 min Scan# 1569
 Delta R.T. -0.012 min
 Lab File: VX045808.D
 Acq: 16 Apr 2025 15:21

Instrument : MSVOA_X
 ClientSampleId : WC-A4-01-G

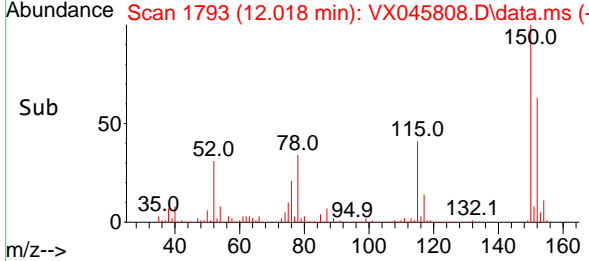
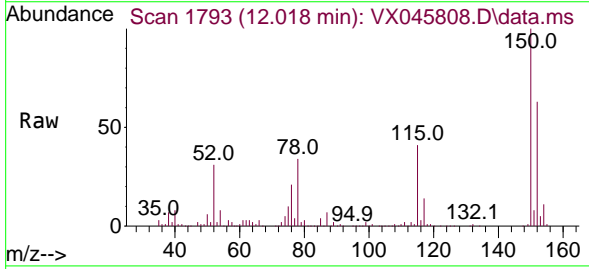
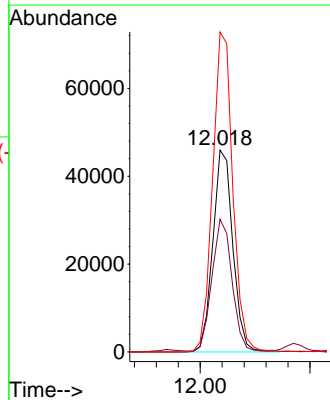


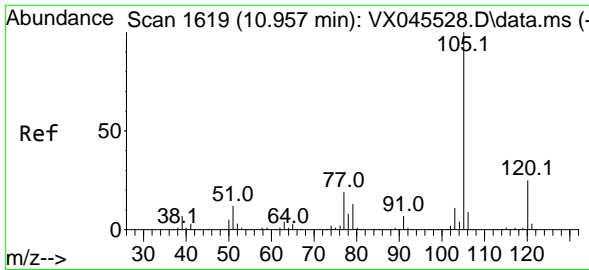
Tgt Ion:104 Resp: 1405
 Ion Ratio Lower Upper
 104 100
 78 346.1 45.4 68.2#
 103 274.0 43.8 65.8#



#72
 1,4-Dichlorobenzene-d4
 Concen: 50.000 ug/l
 RT: 12.018 min Scan# 1793
 Delta R.T. -0.000 min
 Lab File: VX045808.D
 Acq: 16 Apr 2025 15:21

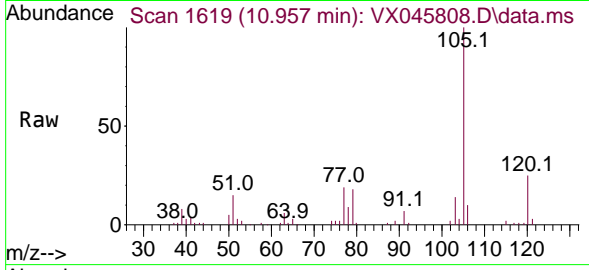
Tgt Ion:152 Resp: 58223
 Ion Ratio Lower Upper
 152 100
 115 65.1 46.9 140.7
 150 159.8 0.0 349.4



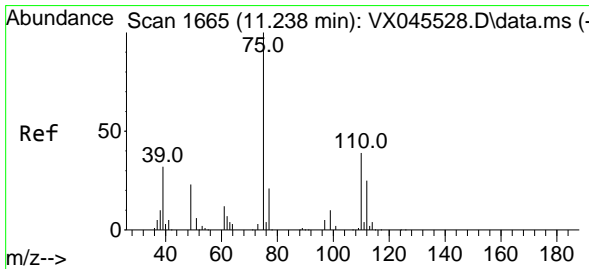
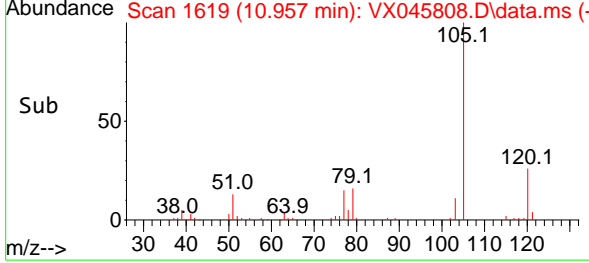
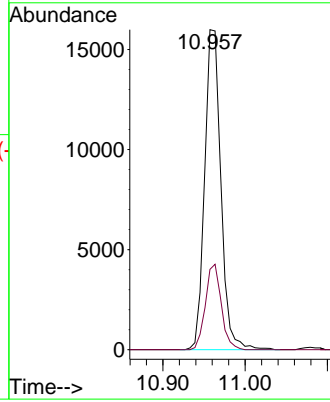


#73
 Isopropylbenzene
 Concen: 4.708 ug/l
 RT: 10.957 min Scan# 1619
 Delta R.T. -0.000 min
 Lab File: VX045808.D
 Acq: 16 Apr 2025 15:21

Instrument : MSVOA_X
 ClientSampleId : WC-A4-01-G

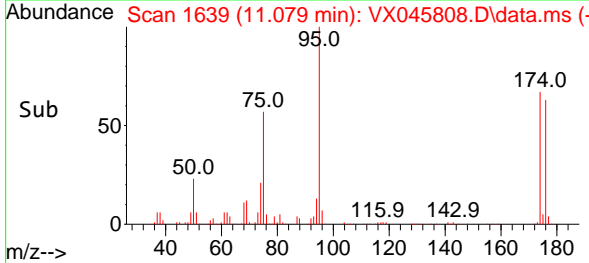
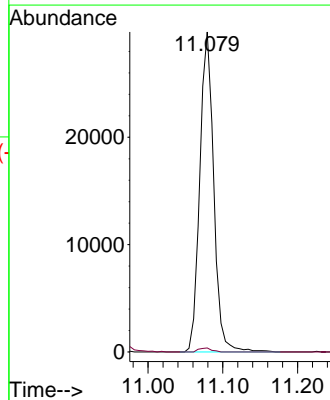
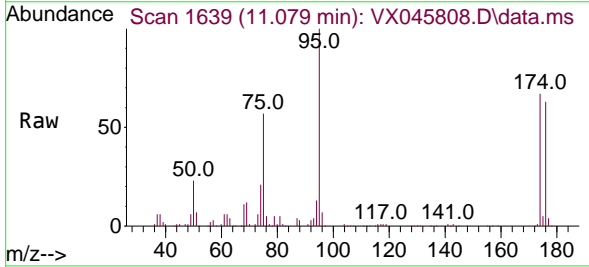


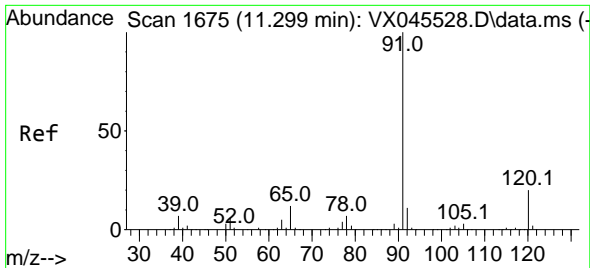
Tgt Ion: 105 Resp: 21955
 Ion Ratio Lower Upper
 105 100
 120 26.0 12.7 38.0



#76
 1,2,3-Trichloropropane
 Concen: 27.184 ug/l
 RT: 11.079 min Scan# 1639
 Delta R.T. -0.159 min
 Lab File: VX045808.D
 Acq: 16 Apr 2025 15:21

Tgt Ion: 75 Resp: 38607
 Ion Ratio Lower Upper
 75 100
 77 1.2 20.0 59.9#

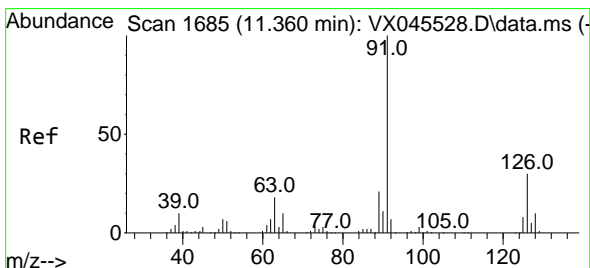
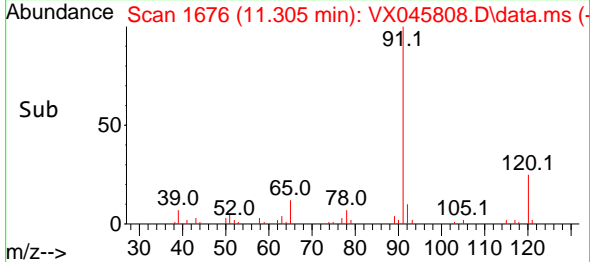
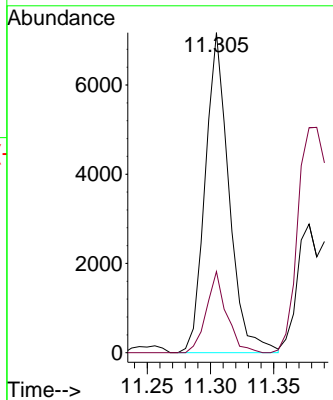
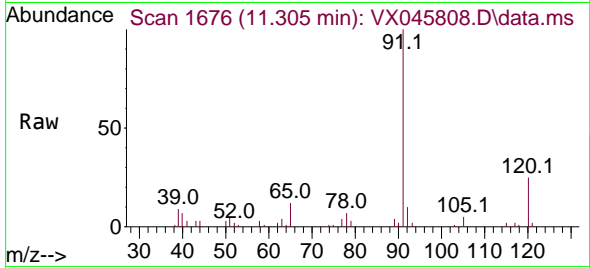




#78
 n-propylbenzene
 Concen: 1.750 ug/l
 RT: 11.305 min Scan# 1676
 Delta R.T. 0.006 min
 Lab File: VX045808.D
 Acq: 16 Apr 2025 15:21

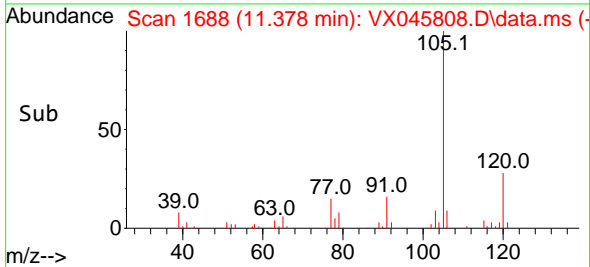
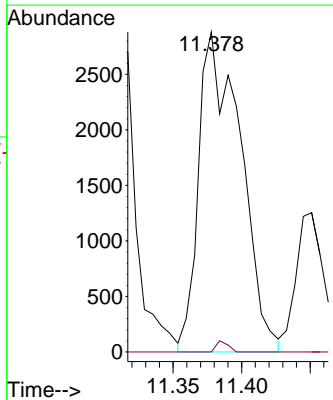
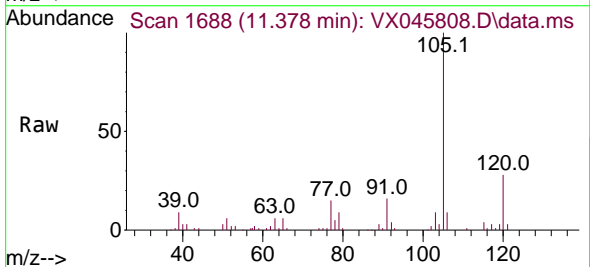
Instrument : MSVOA_X
 ClientSampleId : WC-A4-01-G

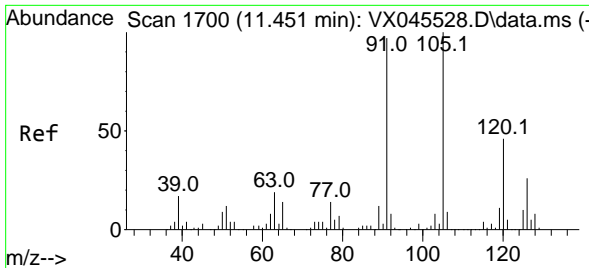
Tgt Ion: 91 Resp: 9402
 Ion Ratio Lower Upper
 91 100
 120 21.4 10.8 32.3



#79
 2-Chlorotoluene
 Concen: 1.782 ug/l
 RT: 11.378 min Scan# 1688
 Delta R.T. 0.018 min
 Lab File: VX045808.D
 Acq: 16 Apr 2025 15:21

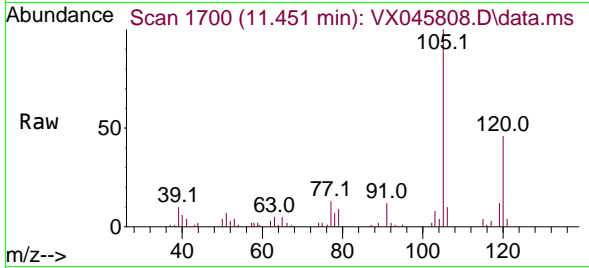
Tgt Ion: 91 Resp: 6119
 Ion Ratio Lower Upper
 91 100
 126 1.0 15.8 47.4#



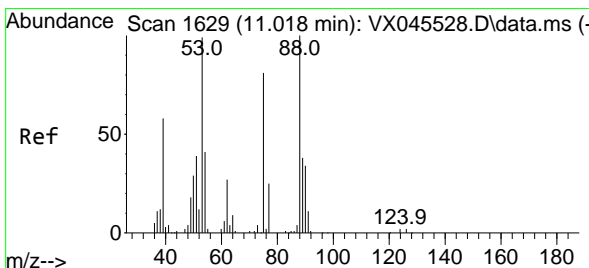
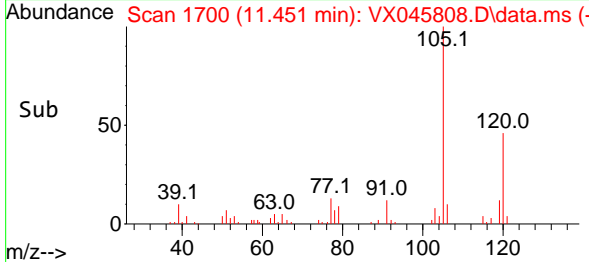
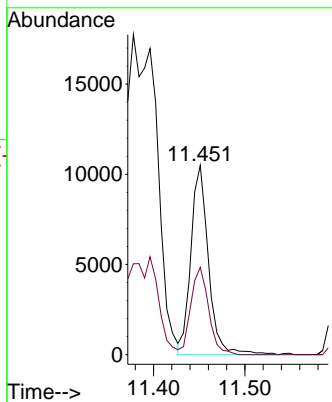


#80
 1,3,5-Trimethylbenzene
 Concen: 3.646 ug/l
 RT: 11.451 min Scan# 11
 Delta R.T. -0.000 min
 Lab File: VX045808.D
 Acq: 16 Apr 2025 15:21

Instrument : MSVOA_X
 ClientSampleId : WC-A4-01-G

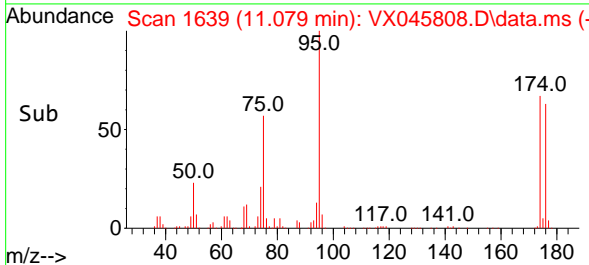
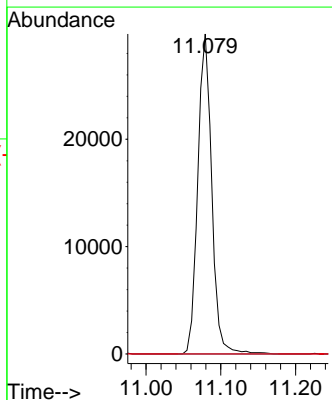
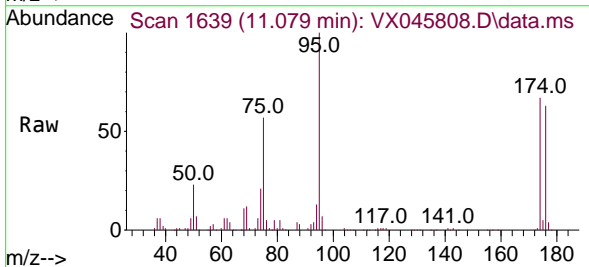


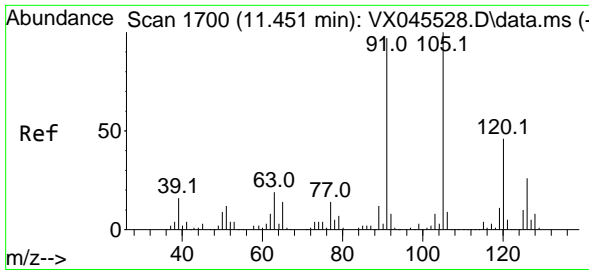
Tgt Ion:105 Resp: 14060
 Ion Ratio Lower Upper
 105 100
 120 46.6 23.0 69.0



#81
 trans-1,4-Dichloro-2-butene
 Concen: 92.260 ug/l
 RT: 11.079 min Scan# 1639
 Delta R.T. 0.061 min
 Lab File: VX045808.D
 Acq: 16 Apr 2025 15:21

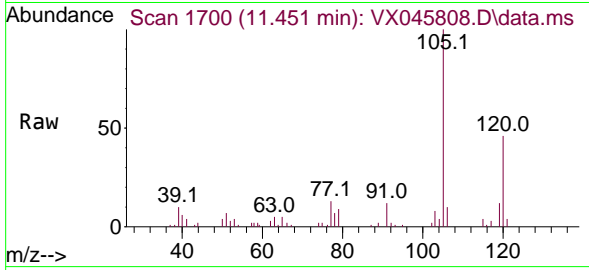
Tgt Ion: 75 Resp: 38607
 Ion Ratio Lower Upper
 75 100
 53 0.0 101.8 152.6#
 89 0.0 37.2 55.8#



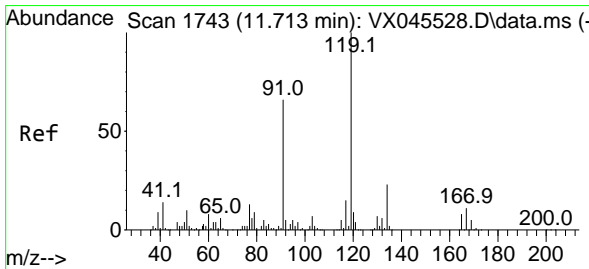
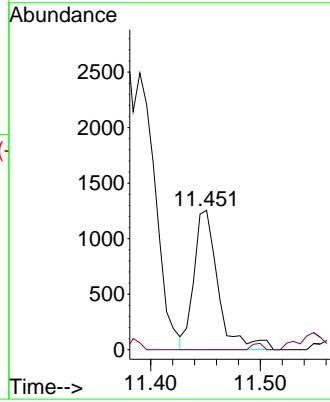
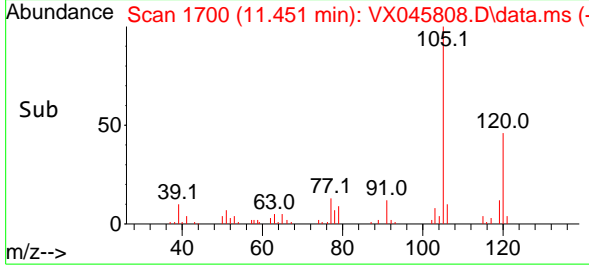


#82
 4-Chlorotoluene
 Concen: 0.503 ug/l
 RT: 11.451 min Scan# 1749
 Delta R.T. -0.000 min
 Lab File: VX045808.D
 Acq: 16 Apr 2025 15:21

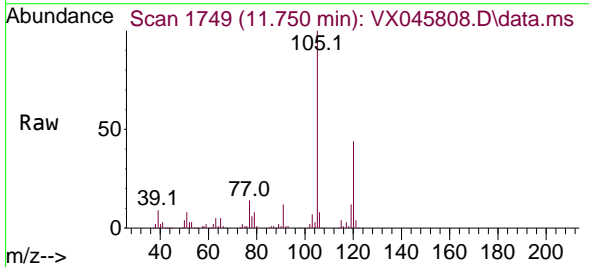
Instrument : MSVOA_X
 ClientSampleId : WC-A4-01-G



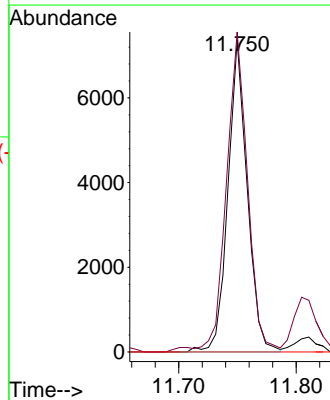
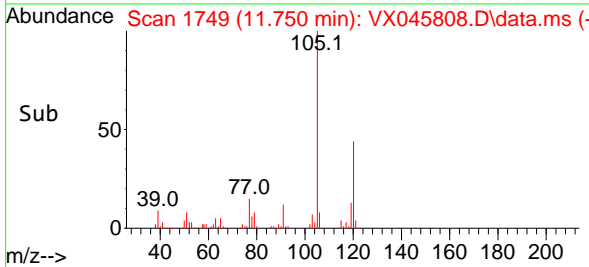
Tgt Ion: 91 Resp: 1927
 Ion Ratio Lower Upper
 91 100
 126 0.0 13.3 39.9#

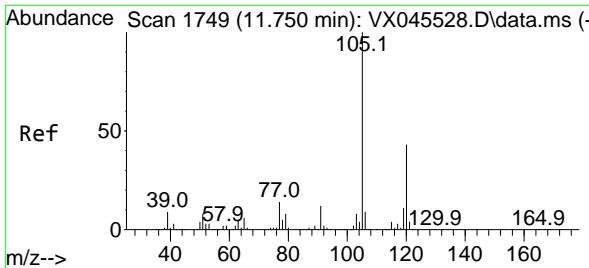


#83
 tert-Butylbenzene
 Concen: 2.199 ug/l
 RT: 11.750 min Scan# 1749
 Delta R.T. 0.036 min
 Lab File: VX045808.D
 Acq: 16 Apr 2025 15:21



Tgt Ion: 119 Resp: 8394
 Ion Ratio Lower Upper
 119 100
 91 113.5 32.4 97.2#
 134 0.0 11.5 34.5#

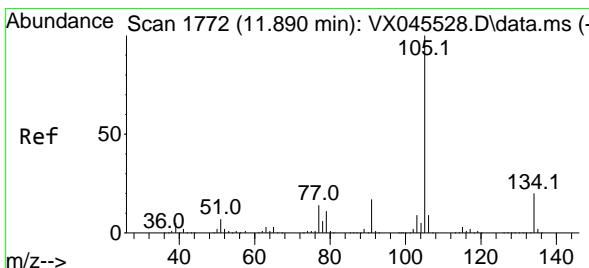
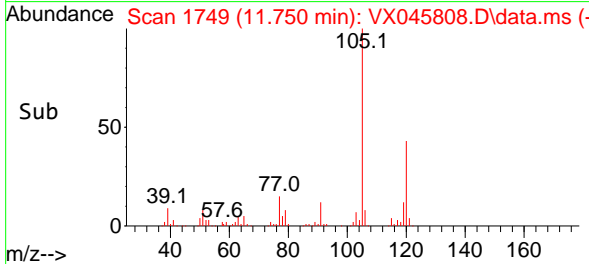
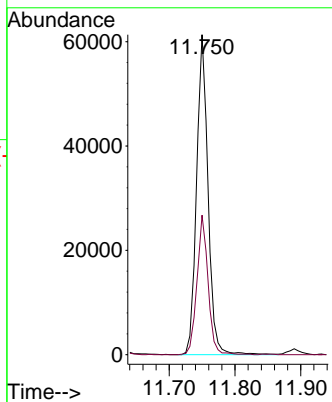
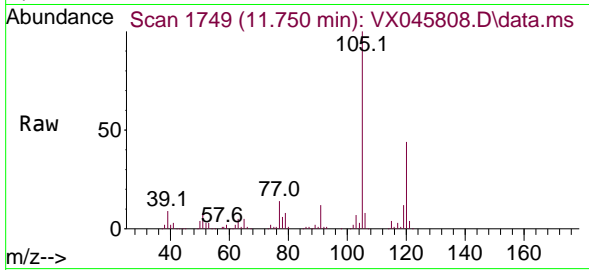




#84
 1,2,4-Trimethylbenzene
 Concen: 19.181 ug/l
 RT: 11.750 min Scan# 1749
 Delta R.T. -0.000 min
 Lab File: VX045808.D
 Acq: 16 Apr 2025 15:21

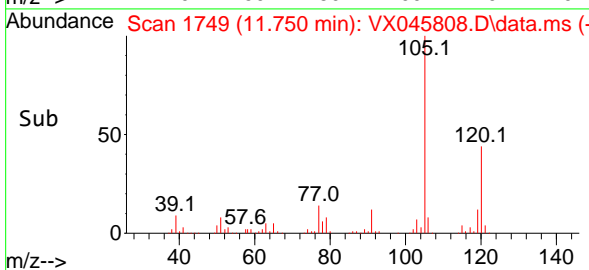
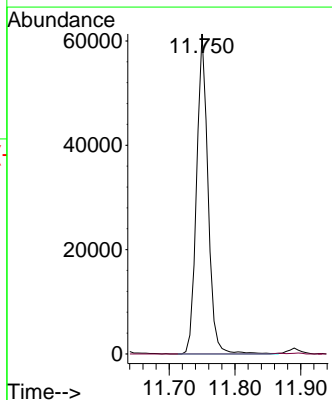
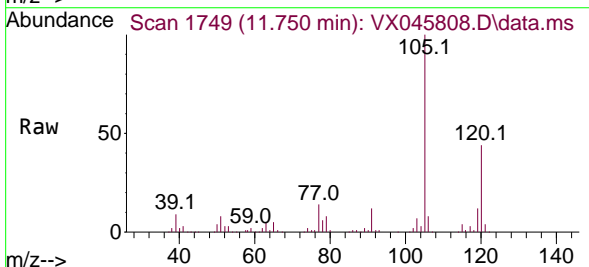
Instrument : MSVOA_X
 ClientSampleId : WC-A4-01-G

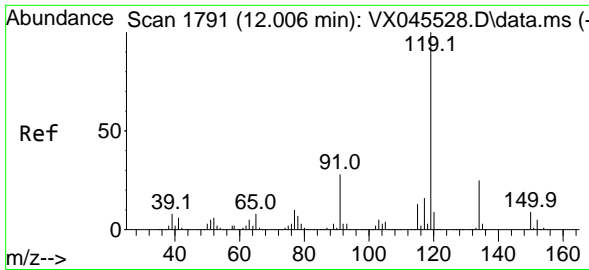
Tgt Ion:105 Resp: 74244
 Ion Ratio Lower Upper
 105 100
 120 42.3 21.4 64.3



#85
 sec-Butylbenzene
 Concen: 15.832 ug/l
 RT: 11.750 min Scan# 1749
 Delta R.T. -0.140 min
 Lab File: VX045808.D
 Acq: 16 Apr 2025 15:21

Tgt Ion:105 Resp: 74244
 Ion Ratio Lower Upper
 105 100
 134 0.0 9.6 28.6#



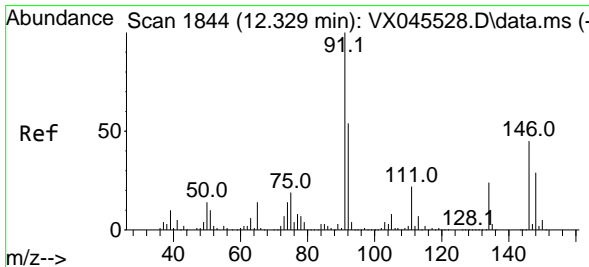
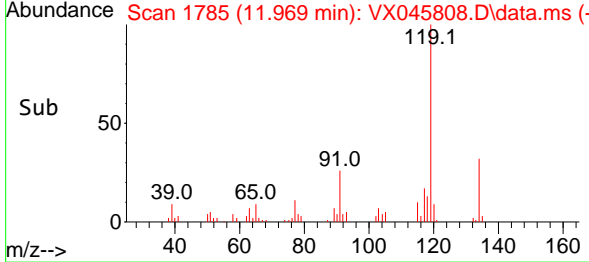
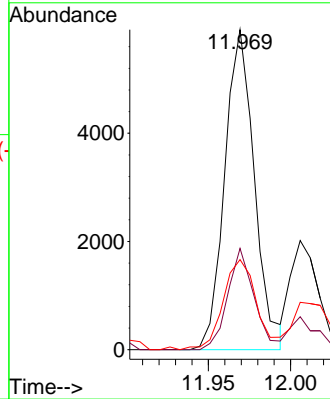
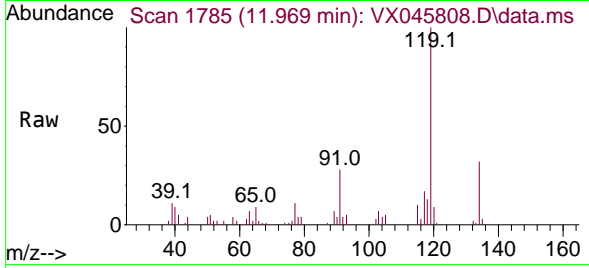


#86
 p-Isopropyltoluene
 Concen: 1.921 ug/l
 RT: 11.969 min Scan# 1785
 Delta R.T. -0.037 min
 Lab File: VX045808.D
 Acq: 16 Apr 2025 15:21

Instrument :
 MSVOA_X
 ClientSampleId :
 WC-A4-01-G

Tgt Ion:119 Resp: 7426

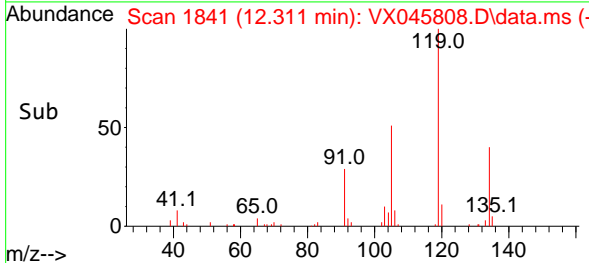
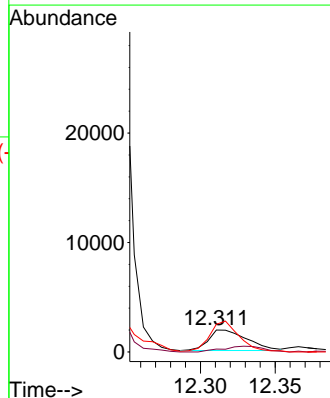
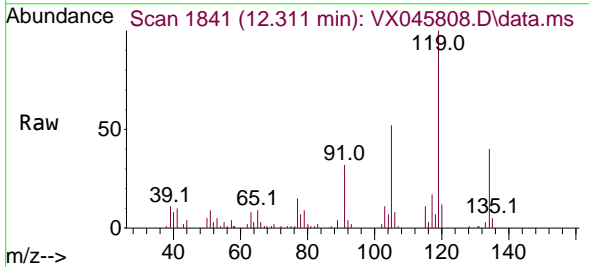
Ion	Ratio	Lower	Upper
119	100		
134	28.5	12.6	37.8
91	31.0	13.7	41.1

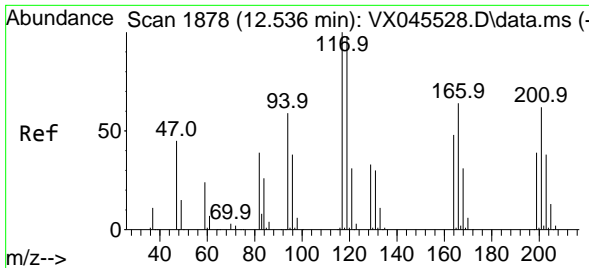


#89
 n-Butylbenzene
 Concen: 1.003 ug/l
 RT: 12.311 min Scan# 1841
 Delta R.T. -0.018 min
 Lab File: VX045808.D
 Acq: 16 Apr 2025 15:21

Tgt Ion: 91 Resp: 3361

Ion	Ratio	Lower	Upper
91	100		
92	29.6	26.9	80.6
134	117.0	11.9	35.7#

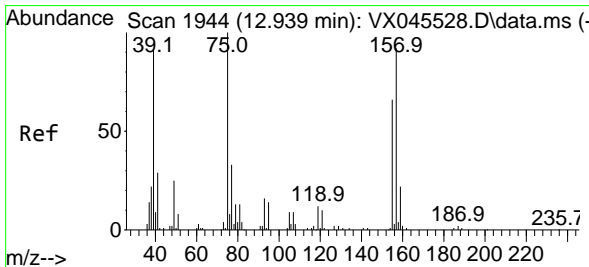
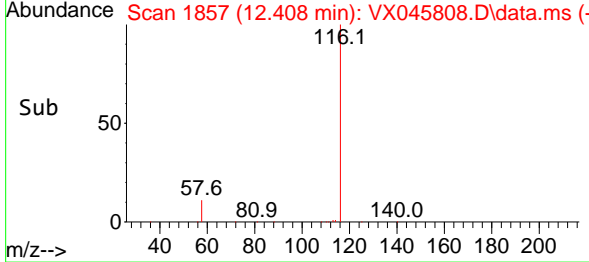
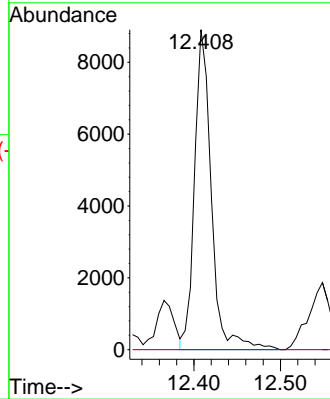
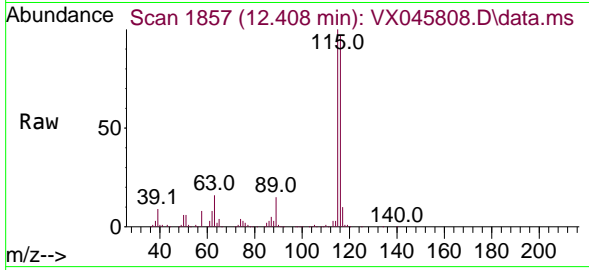




#90
 Hexachloroethane
 Concen: 18.042 ug/l
 RT: 12.408 min Scan# 117
 Delta R.T. -0.128 min
 Lab File: VX045808.D
 Acq: 16 Apr 2025 15:21

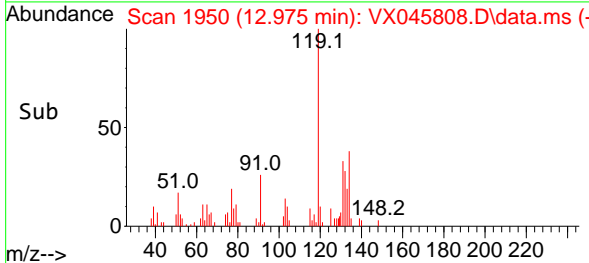
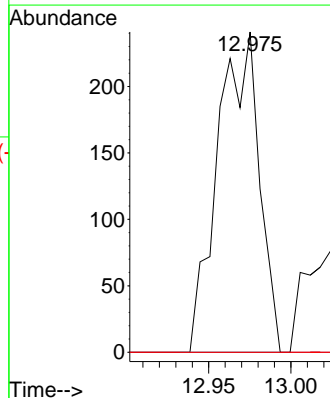
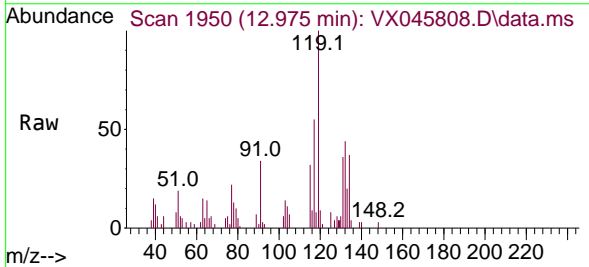
Instrument : MSVOA_X
 ClientSampleId : WC-A4-01-G

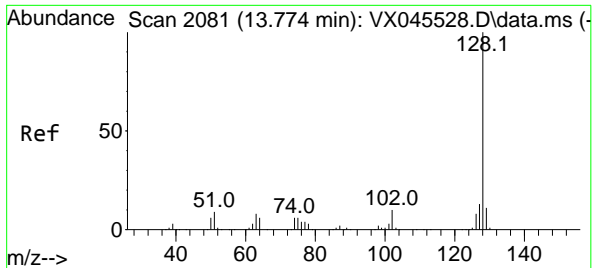
Tgt Ion:117 Resp: 11988
 Ion Ratio Lower Upper
 117 100
 201 0.0 31.2 93.6#



#92
 1,2-Dibromo-3-Chloropropane
 Concen: 1.235 ug/l
 RT: 12.975 min Scan# 1950
 Delta R.T. 0.036 min
 Lab File: VX045808.D
 Acq: 16 Apr 2025 15:21

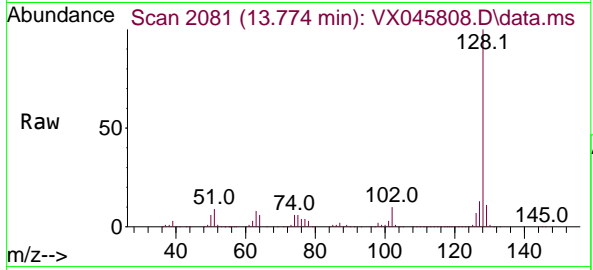
Tgt Ion: 75 Resp: 423
 Ion Ratio Lower Upper
 75 100
 155 0.0 34.9 104.7#
 157 0.0 44.9 134.7#





#95
 Naphthalene
 Concen: 520.785 ug/l
 RT: 13.774 min Scan# 20
 Delta R.T. -0.000 min
 Lab File: VX045808.D
 Acq: 16 Apr 2025 15:21

Instrument : MSVOA_X
 ClientSampleId : WC-A4-01-G



Tgt Ion:128 Resp: 2103763

Ion	Ratio	Lower	Upper
128	100		
127	12.9	10.3	15.5
129	11.2	8.6	12.8

