

Data Path : Z:\voasrv\HPCHEM1\MSVOA_X\Data\VX041725\
 Data File : VX045818.D
 Acq On : 17 Apr 2025 11:12
 Operator : JC/MD
 Sample : VX0417MBL01
 Misc : 5.00g/10mL/100uL/5.00mL/MSVOA_X/MEOH
 ALS Vial : 3 Sample Multiplier: 1

Instrument :
 MSVOA_X
 ClientSampleId :

Quant Time: Apr 18 03:35:14 2025
 Quant Method : Z:\voasrv\HPCHEM1\MSVOA_X\Method\82X040225W.M
 Quant Title : SW846 8260
 QLast Update : Wed Apr 02 03:11:43 2025
 Response via : Initial Calibration

Compound	R.T.	QIon	Response	Conc	Units	Dev(Min)

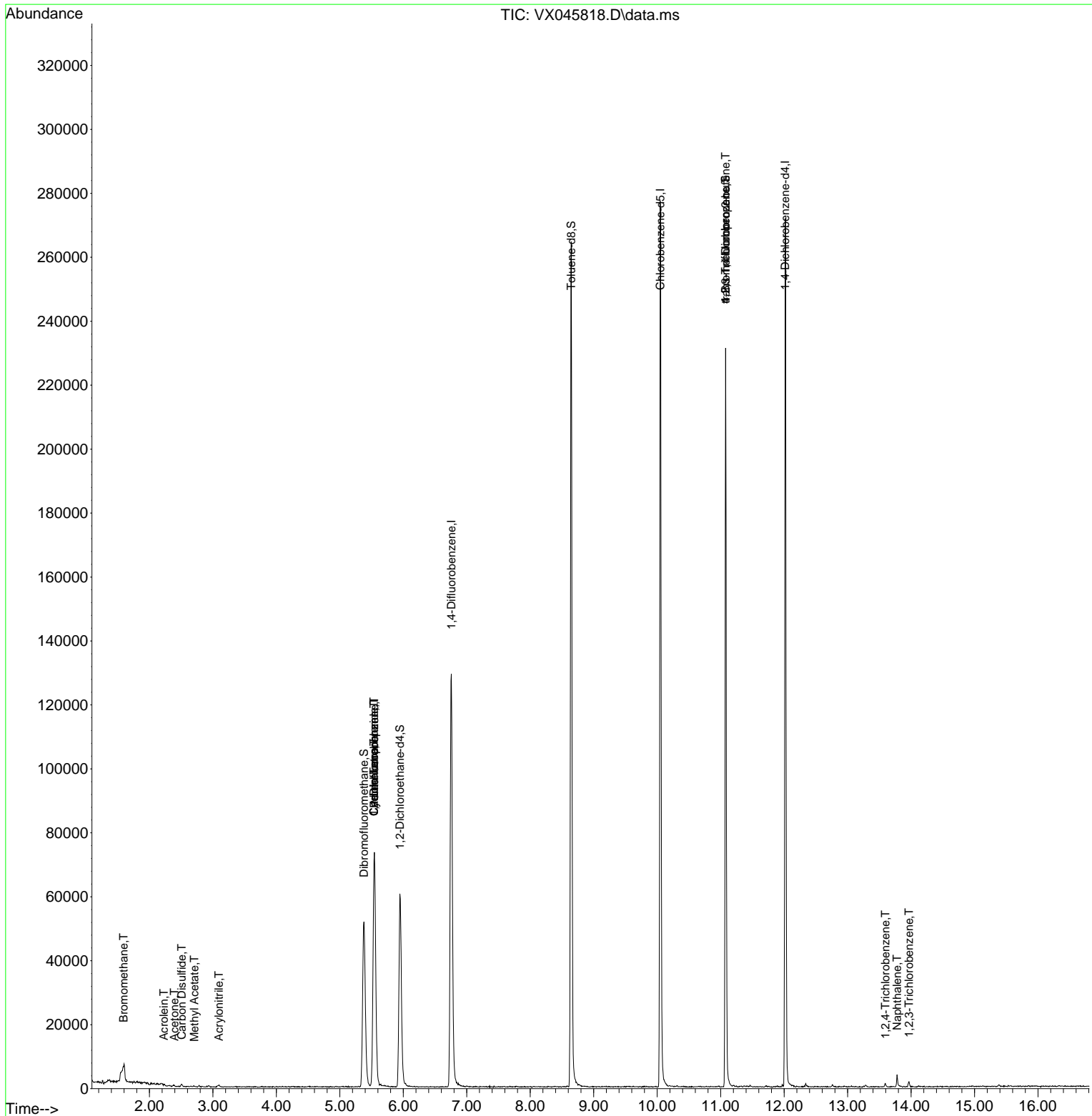
Internal Standards						
1) Pentafluorobenzene	5.544	168	62579	50.000	ug/l	0.00
34) 1,4-Difluorobenzene	6.757	114	124095	50.000	ug/l	0.00
63) Chlorobenzene-d5	10.049	117	116448	50.000	ug/l	0.00
72) 1,4-Dichlorobenzene-d4	12.018	152	51364	50.000	ug/l	0.00
System Monitoring Compounds						
33) 1,2-Dichloroethane-d4	5.946	65	62613	54.712	ug/l	0.00
Spiked Amount	50.000	Range 74 - 125	Recovery	=	109.420%	
35) Dibromofluoromethane	5.379	113	45058	51.176	ug/l	0.00
Spiked Amount	50.000	Range 75 - 124	Recovery	=	102.360%	
50) Toluene-d8	8.647	98	155013	50.441	ug/l	0.00
Spiked Amount	50.000	Range 86 - 113	Recovery	=	100.880%	
62) 4-Bromofluorobenzene	11.079	95	60827	54.339	ug/l	0.00
Spiked Amount	50.000	Range 77 - 121	Recovery	=	108.680%	
Target Compounds						
						Qvalue
5) Bromomethane	1.593	94	241	0.578	ug/l #	3
13) Acrolein	2.227	56	181	0.855	ug/l #	75
15) Acrylonitrile	3.093	53	375	0.772	ug/l #	82
16) Acetone	2.392	43	421	0.896	ug/l #	47
17) Carbon Disulfide	2.508	76	1014	0.546	ug/l #	76
18) Methyl Acetate	2.709	43	298	0.275	ug/l #	54
31) Cyclohexane	5.538	56	1836	1.308	ug/l #	10
36) 1,1-Dichloropropene	5.538	75	6462	5.436	ug/l #	49
38) Carbon Tetrachloride	5.538	117	7248	5.641	ug/l #	18
76) 1,2,3-Trichloropropane	11.079	75	35647	28.452	ug/l #	37
81) trans-1,4-Dichloro-2-b...	11.079	75	35647	96.562	ug/l #	1
93) 1,2,4-Trichlorobenzene	13.597	180	455	0.475	ug/l	88
95) Naphthalene	13.780	128	3083	0.865	ug/l #	94
96) 1,2,3-Trichlorobenzene	13.969	180	581	0.579	ug/l	90

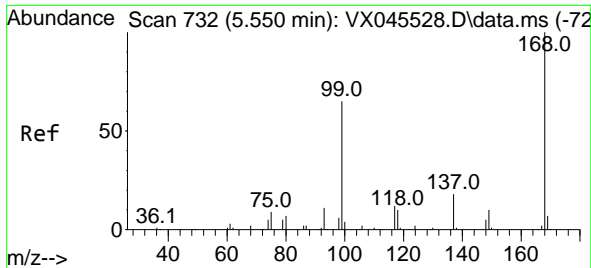
(#) = qualifier out of range (m) = manual integration (+) = signals summed

Data Path : Z:\voasrv\HPCHEM1\MSVOA_X\Data\VX041725\
 Data File : VX045818.D
 Acq On : 17 Apr 2025 11:12
 Operator : JC/MD
 Sample : VX0417MBL01
 Misc : 5.00g/10mL/100uL/5.00mL/MSVOA_X/MEOH
 ALS Vial : 3 Sample Multiplier: 1

Instrument :
 MSVOA_X
 ClientSampleId :

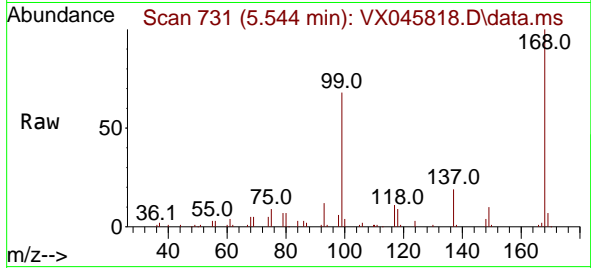
Quant Time: Apr 18 03:35:14 2025
 Quant Method : Z:\voasrv\HPCHEM1\MSVOA_X\Method\82X040225W.M
 Quant Title : SW846 8260
 QLast Update : Wed Apr 02 03:11:43 2025
 Response via : Initial Calibration



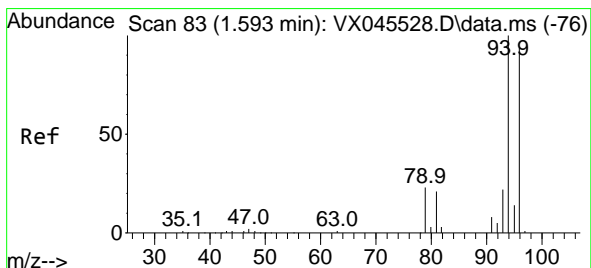
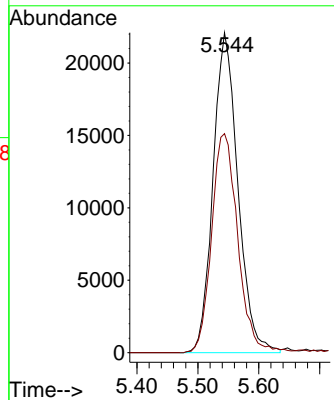
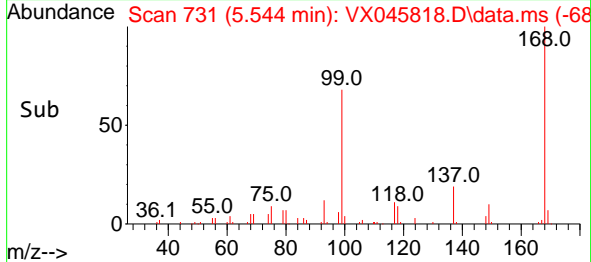


#1
 Pentafluorobenzene
 Concen: 50.000 ug/l
 RT: 5.544 min Scan# 71
 Delta R.T. -0.006 min
 Lab File: VX045818.D
 Acq: 17 Apr 2025 11:12

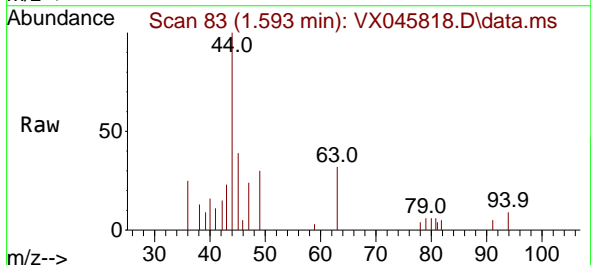
Instrument :
 MSVOA_X
 ClientSampleId :



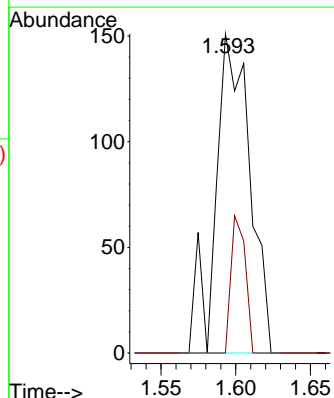
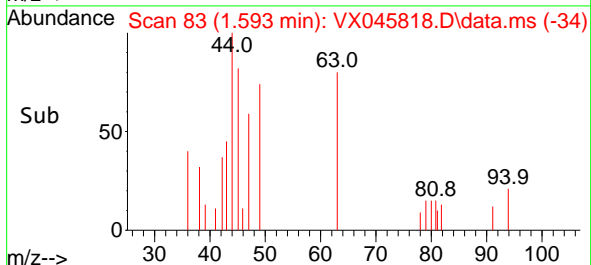
Tgt Ion:168 Resp: 62579
 Ion Ratio Lower Upper
 168 100
 99 68.4 52.3 78.5

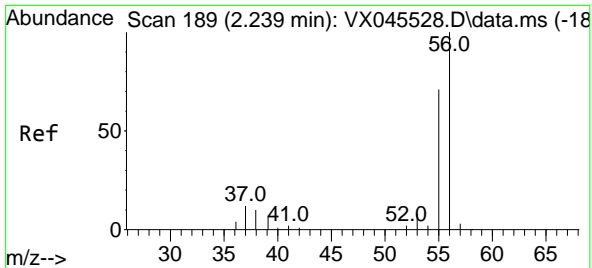


#5
 Bromomethane
 Concen: 0.578 ug/l
 RT: 1.593 min Scan# 83
 Delta R.T. -0.000 min
 Lab File: VX045818.D
 Acq: 17 Apr 2025 11:12



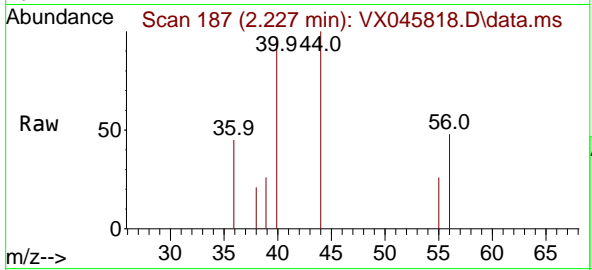
Tgt Ion: 94 Resp: 241
 Ion Ratio Lower Upper
 94 100
 96 0.0 74.8 112.2#



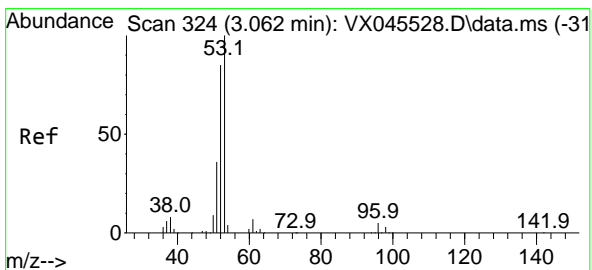
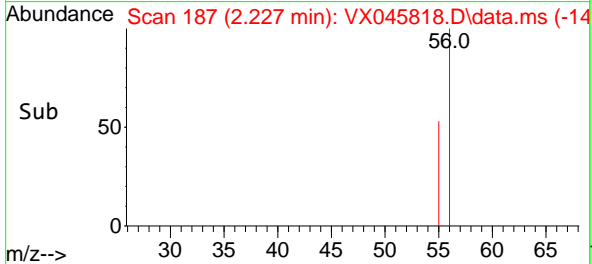
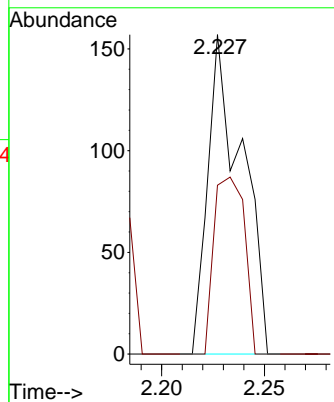


#13
 Acrolein
 Concen: 0.855 ug/l
 RT: 2.227 min Scan# 181
 Delta R.T. -0.012 min
 Lab File: VX045818.D
 Acq: 17 Apr 2025 11:12

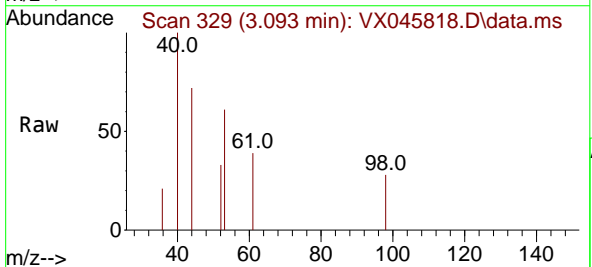
Instrument : MSVOA_X
 ClientSampleId :



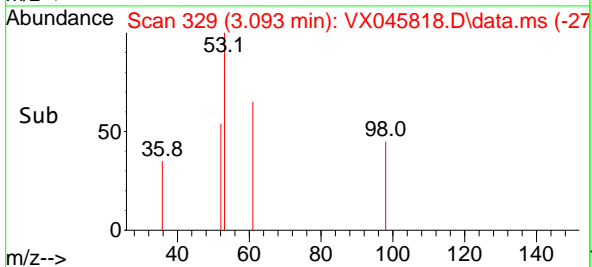
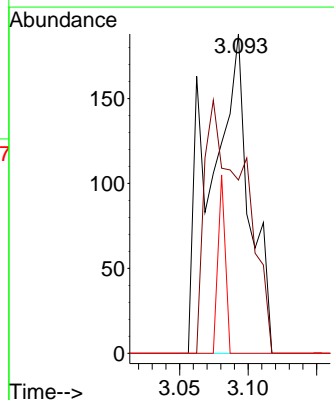
Tgt Ion: 56 Resp: 181
 Ion Ratio Lower Upper
 56 100
 55 49.7 56.2 84.2#

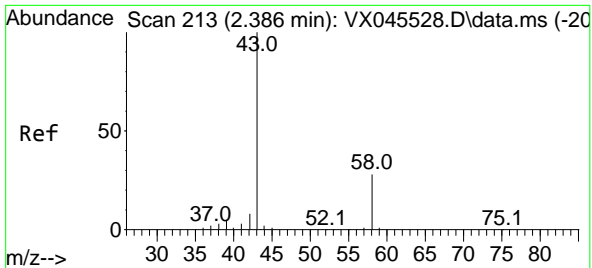


#15
 Acrylonitrile
 Concen: 0.772 ug/l
 RT: 3.093 min Scan# 329
 Delta R.T. 0.030 min
 Lab File: VX045818.D
 Acq: 17 Apr 2025 11:12



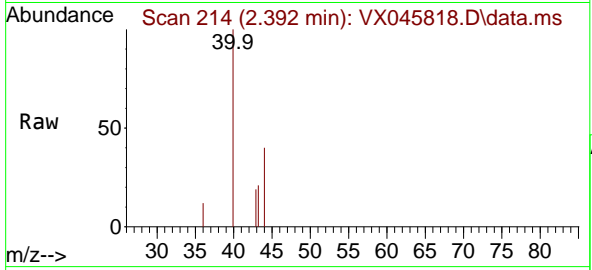
Tgt Ion: 53 Resp: 375
 Ion Ratio Lower Upper
 53 100
 52 78.9 67.4 101.2
 51 10.1 29.9 44.9#



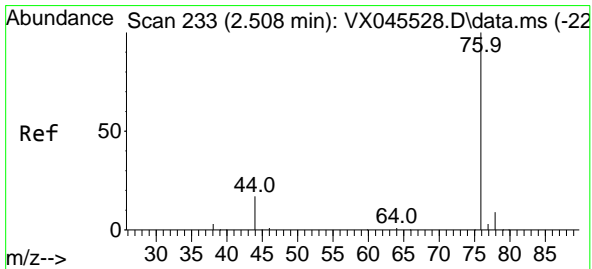
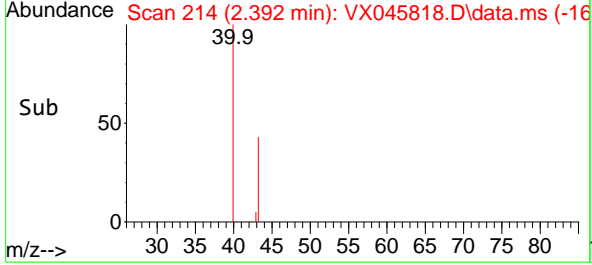
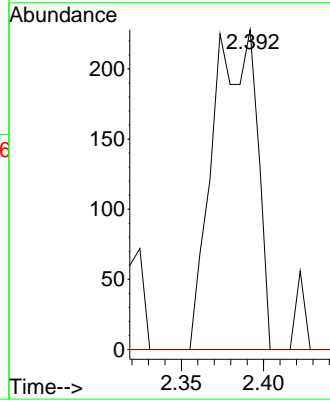


#16
 Acetone
 Concen: 0.896 ug/l
 RT: 2.392 min Scan# 214
 Delta R.T. 0.006 min
 Lab File: VX045818.D
 Acq: 17 Apr 2025 11:12

Instrument : MSVOA_X
 ClientSampleId :

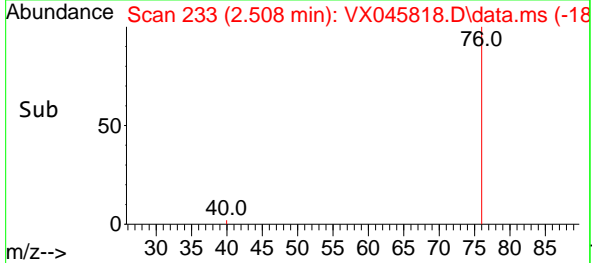
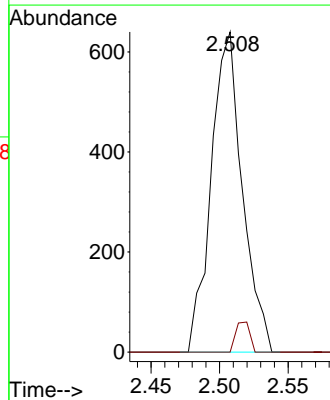
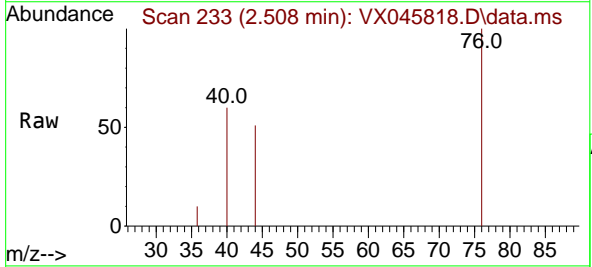


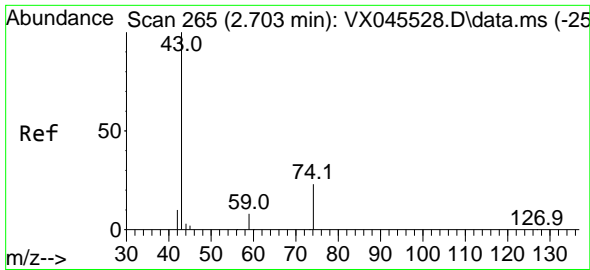
Tgt Ion: 43 Resp: 421
 Ion Ratio Lower Upper
 43 100
 58 0.0 22.3 33.5#



#17
 Carbon Disulfide
 Concen: 0.546 ug/l
 RT: 2.508 min Scan# 233
 Delta R.T. -0.000 min
 Lab File: VX045818.D
 Acq: 17 Apr 2025 11:12

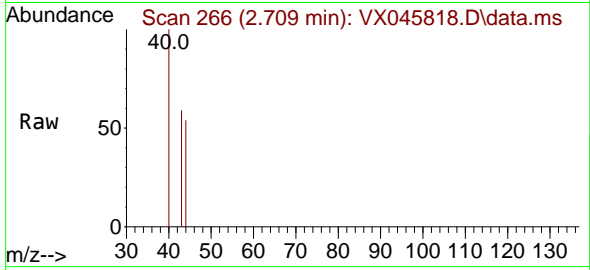
Tgt Ion: 76 Resp: 1014
 Ion Ratio Lower Upper
 76 100
 78 0.0 7.0 10.6#



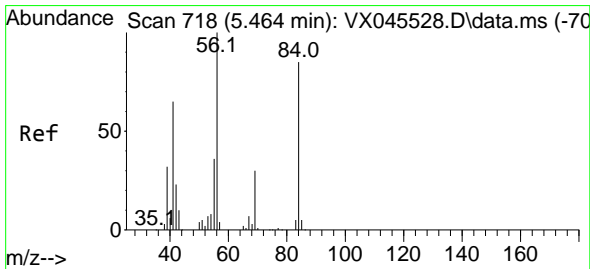
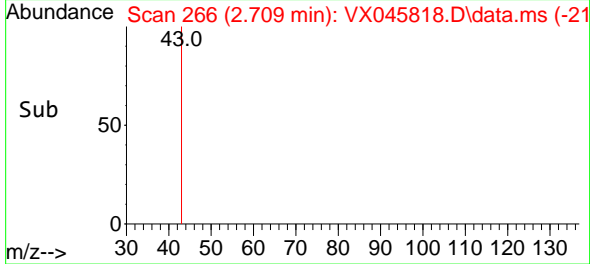
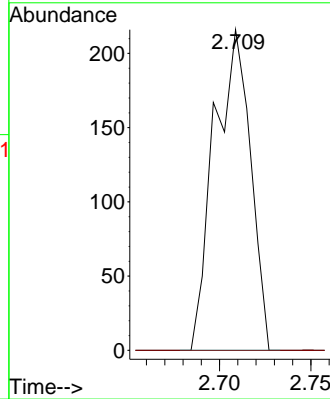


#18
 Methyl Acetate
 Concen: 0.275 ug/l
 RT: 2.709 min Scan# 20
 Delta R.T. 0.006 min
 Lab File: VX045818.D
 Acq: 17 Apr 2025 11:12

Instrument :
 MSVOA_X
 ClientSampleId :

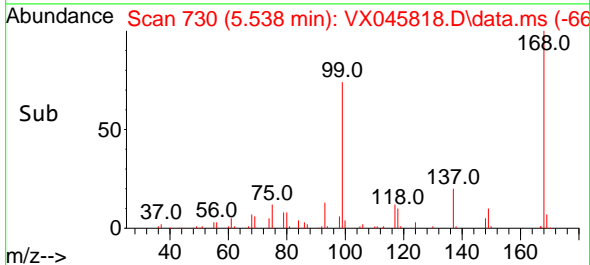
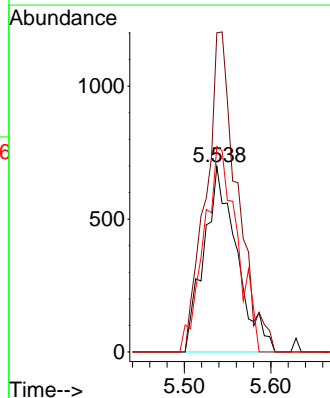
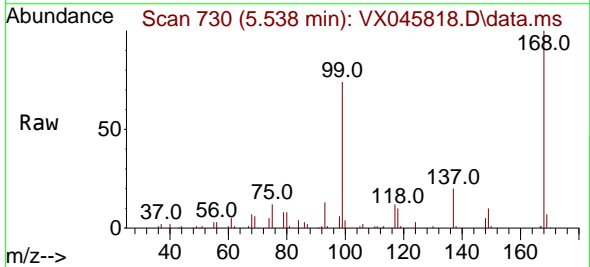


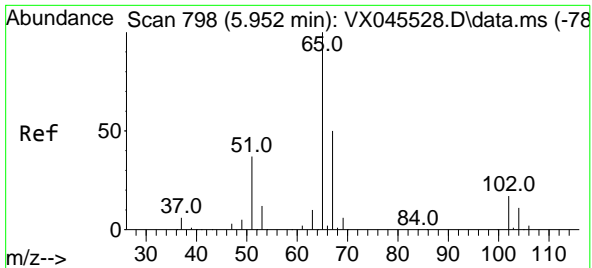
Tgt Ion: 43 Resp: 298
 Ion Ratio Lower Upper
 43 100
 74 0.0 17.5 26.3#



#31
 Cyclohexane
 Concen: 1.308 ug/l
 RT: 5.538 min Scan# 730
 Delta R.T. 0.073 min
 Lab File: VX045818.D
 Acq: 17 Apr 2025 11:12

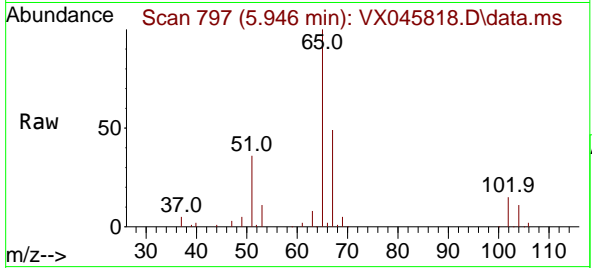
Tgt Ion: 56 Resp: 1836
 Ion Ratio Lower Upper
 56 100
 69 172.1 23.6 35.4#
 84 110.7 67.7 101.5#



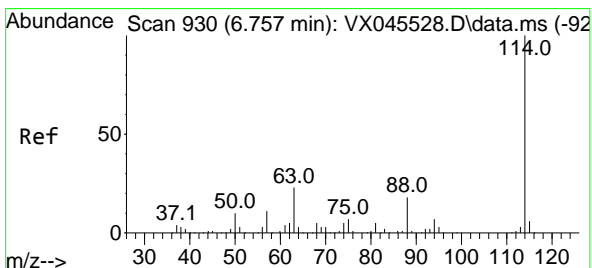
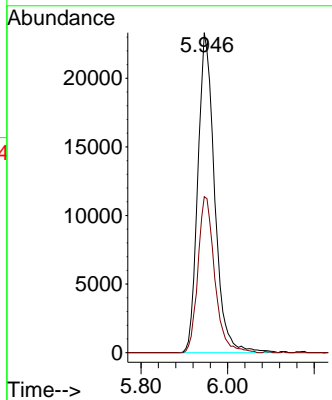
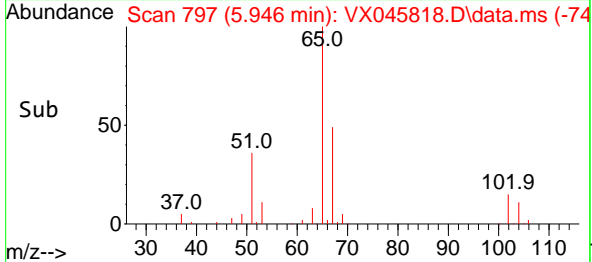


#33
 1,2-Dichloroethane-d4
 Concen: 54.712 ug/l
 RT: 5.946 min Scan# 798
 Delta R.T. -0.006 min
 Lab File: VX045818.D
 Acq: 17 Apr 2025 11:12

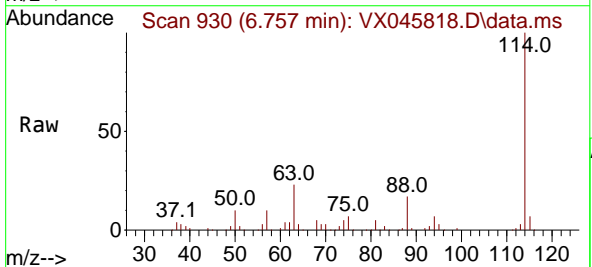
Instrument : MSVOA_X
 ClientSampleId :



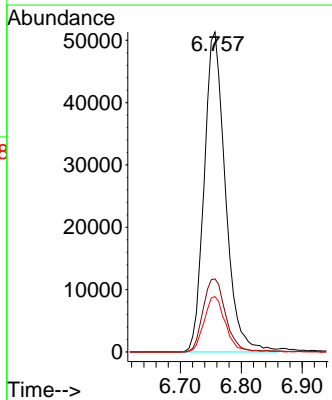
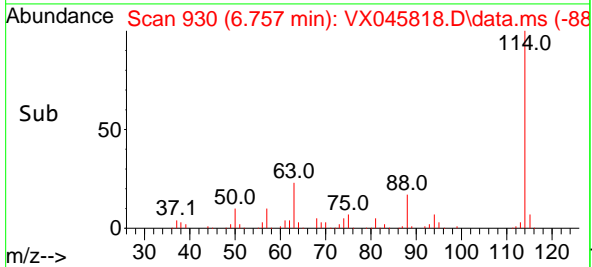
Tgt Ion: 65 Resp: 62613
 Ion Ratio Lower Upper
 65 100
 67 49.0 0.0 99.0

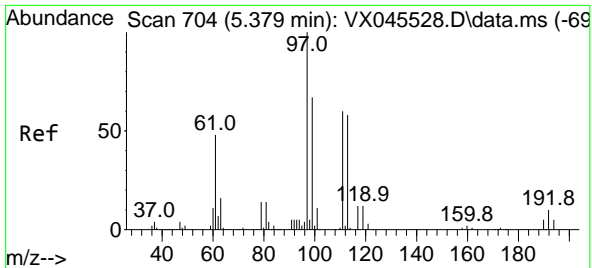


#34
 1,4-Difluorobenzene
 Concen: 50.000 ug/l
 RT: 6.757 min Scan# 930
 Delta R.T. -0.000 min
 Lab File: VX045818.D
 Acq: 17 Apr 2025 11:12



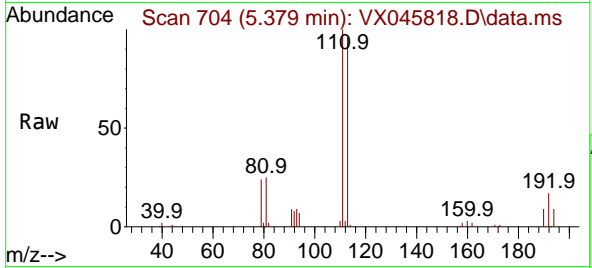
Tgt Ion: 114 Resp: 124095
 Ion Ratio Lower Upper
 114 100
 63 22.8 0.0 46.8
 88 17.3 0.0 35.4



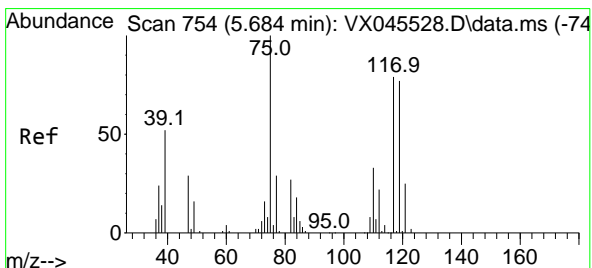
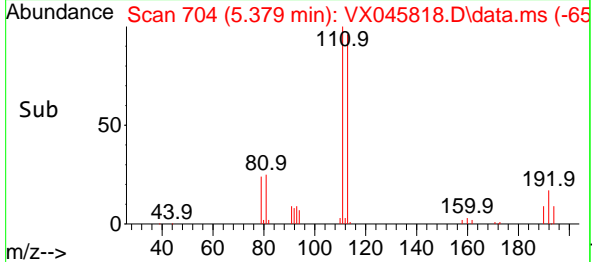
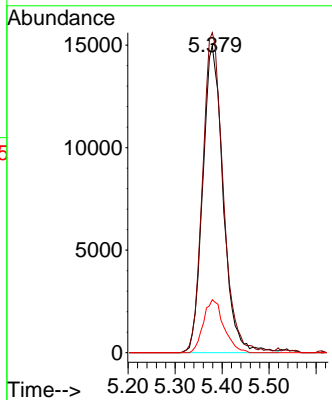


#35
 Dibromofluoromethane
 Concen: 51.176 ug/l
 RT: 5.379 min Scan# 704
 Delta R.T. -0.000 min
 Lab File: VX045818.D
 Acq: 17 Apr 2025 11:12

Instrument : MSVOA_X
 ClientSampleId :

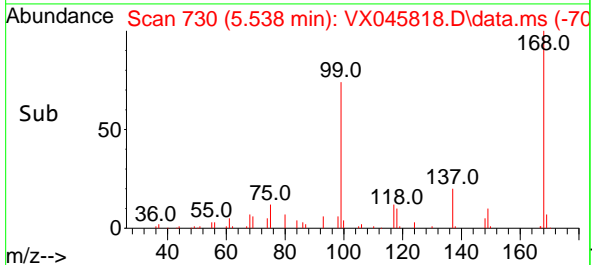
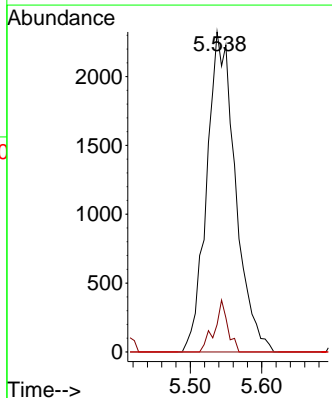
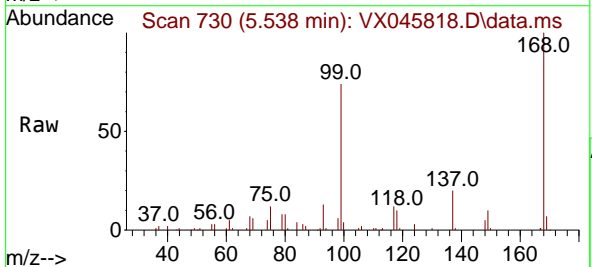


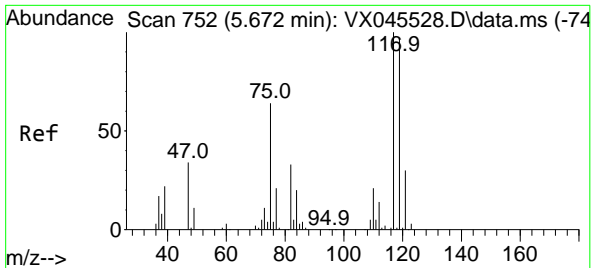
Tgt Ion:113	Resp:	45058
Ion Ratio	Lower	Upper
113	100	
111	105.1	81.8 122.6
192	17.3	13.8 20.6



#36
 1,1-Dichloropropene
 Concen: 5.436 ug/l
 RT: 5.538 min Scan# 730
 Delta R.T. -0.146 min
 Lab File: VX045818.D
 Acq: 17 Apr 2025 11:12

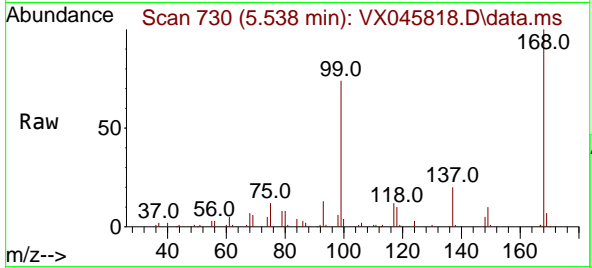
Tgt Ion:75	Resp:	6462
Ion Ratio	Lower	Upper
75	100	
110	7.5	16.9 50.6#
77	0.0	25.0 37.4#



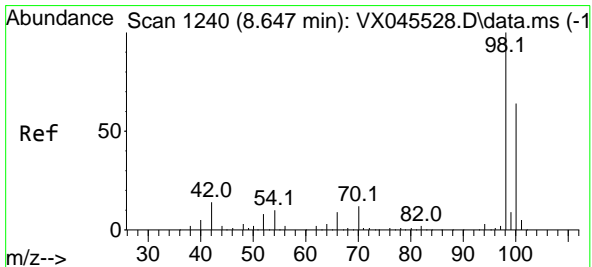
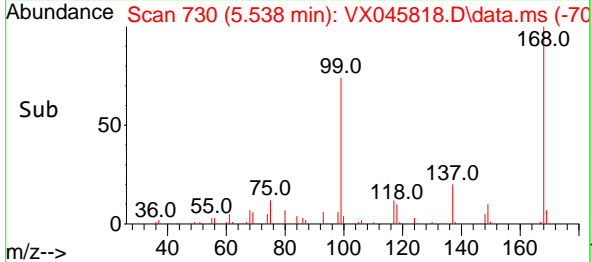
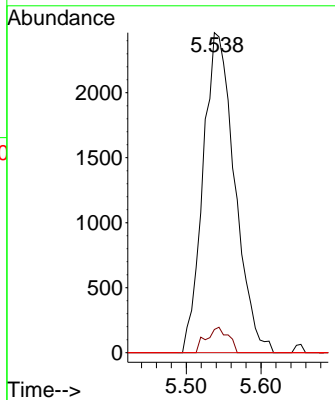


#38
 Carbon Tetrachloride
 Concen: 5.641 ug/l
 RT: 5.538 min Scan# 71
 Delta R.T. -0.134 min
 Lab File: VX045818.D
 Acq: 17 Apr 2025 11:12

Instrument : MSVOA_X
 ClientSampleId :

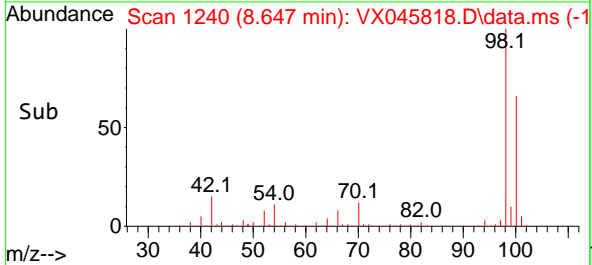
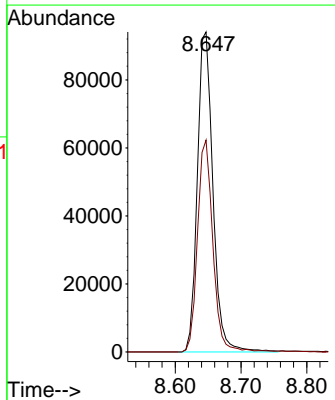
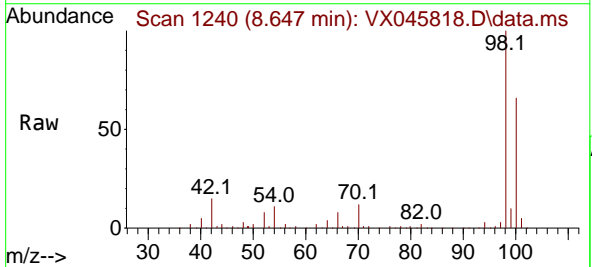


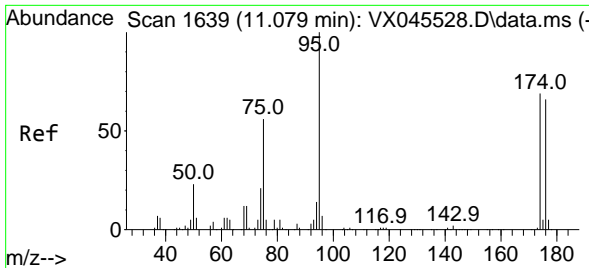
Tgt Ion: 117 Resp: 7248
 Ion Ratio Lower Upper
 117 100
 119 7.3 76.9 115.3#
 121 0.0 24.2 36.2#



#50
 Toluene-d8
 Concen: 50.441 ug/l
 RT: 8.647 min Scan# 1240
 Delta R.T. -0.000 min
 Lab File: VX045818.D
 Acq: 17 Apr 2025 11:12

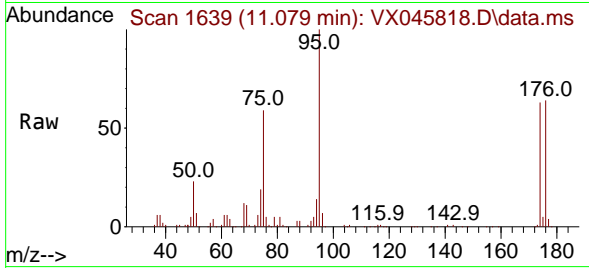
Tgt Ion: 98 Resp: 155013
 Ion Ratio Lower Upper
 98 100
 100 65.3 52.2 78.4



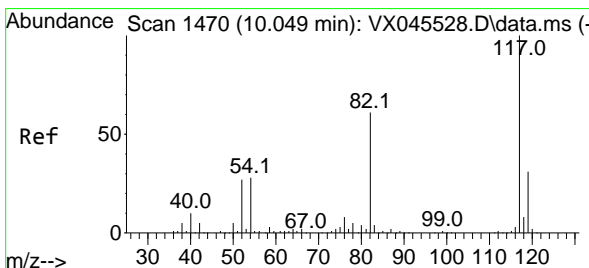
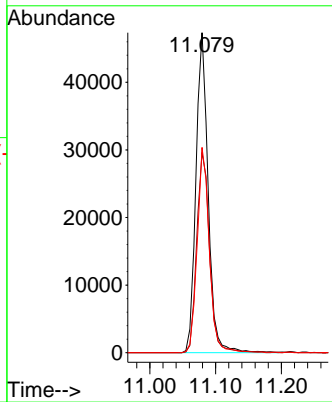
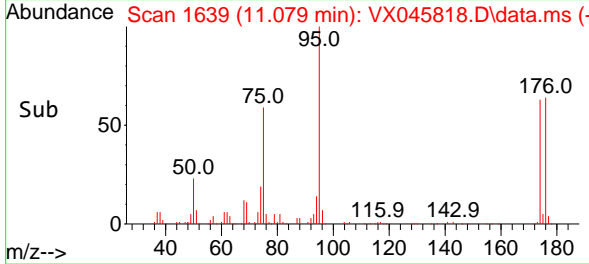


#62
 4-Bromofluorobenzene
 Concen: 54.339 ug/l
 RT: 11.079 min Scan# 1639
 Delta R.T. -0.000 min
 Lab File: VX045818.D
 Acq: 17 Apr 2025 11:12

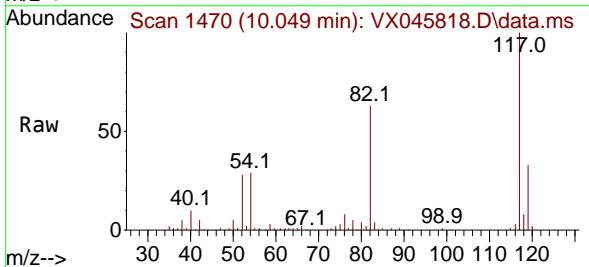
Instrument : MSVOA_X
 ClientSampleId :



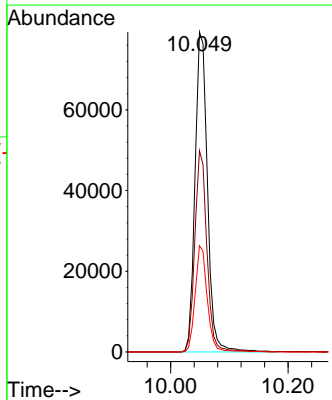
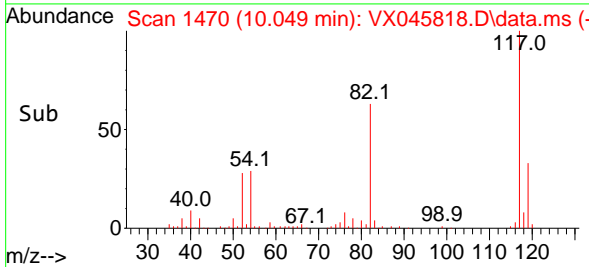
Tgt Ion: 95 Resp: 60827
 Ion Ratio Lower Upper
 95 100
 174 65.7 0.0 135.8
 176 63.6 0.0 131.4

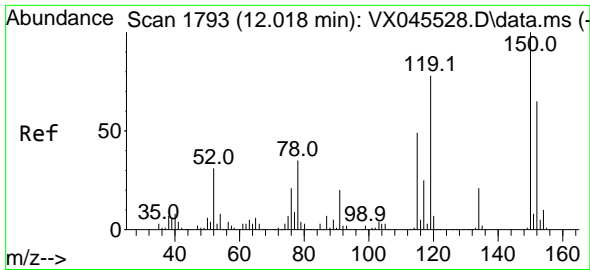


#63
 Chlorobenzene-d5
 Concen: 50.000 ug/l
 RT: 10.049 min Scan# 1470
 Delta R.T. -0.000 min
 Lab File: VX045818.D
 Acq: 17 Apr 2025 11:12



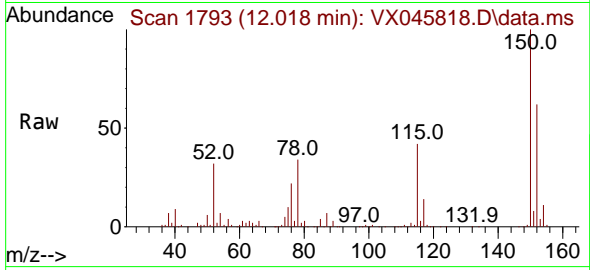
Tgt Ion: 117 Resp: 116448
 Ion Ratio Lower Upper
 117 100
 82 62.9 49.2 73.8
 119 33.2 25.1 37.7



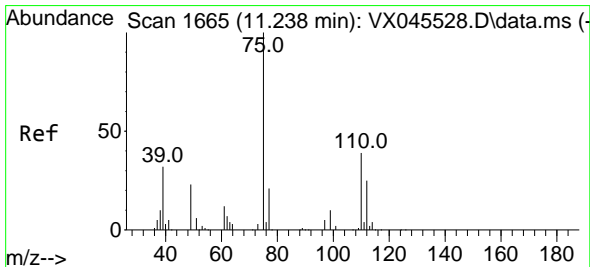
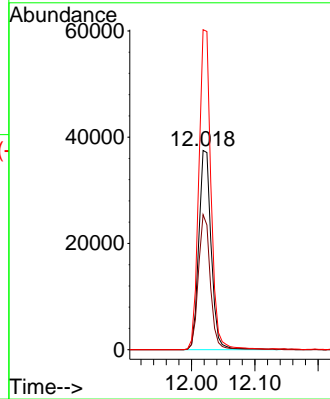
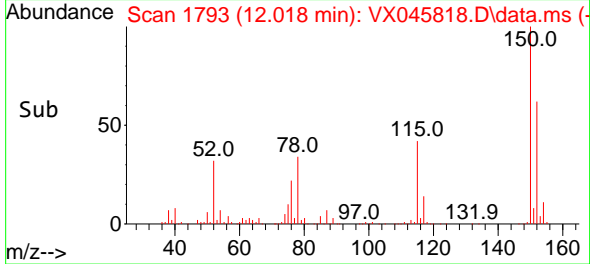


#72
 1,4-Dichlorobenzene-d4
 Concen: 50.000 ug/l
 RT: 12.018 min Scan# 1
 Delta R.T. -0.000 min
 Lab File: VX045818.D
 Acq: 17 Apr 2025 11:12

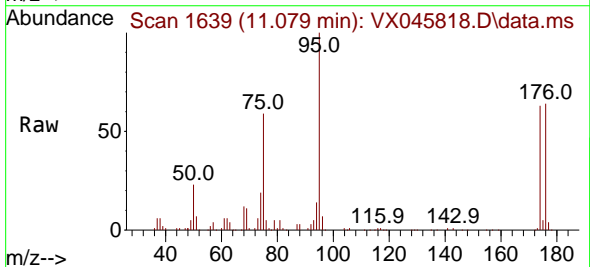
Instrument :
 MSVOA_X
 ClientSampleId :



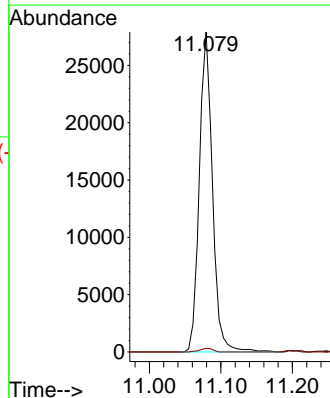
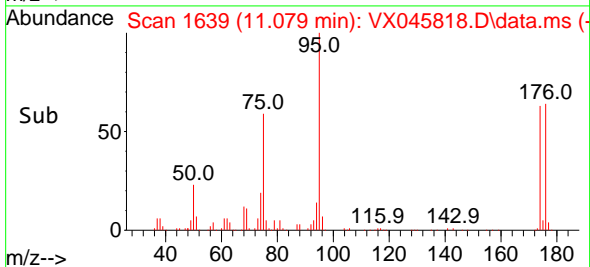
Tgt Ion:152 Resp: 51364
 Ion Ratio Lower Upper
 152 100
 115 65.5 46.9 140.7
 150 157.4 0.0 349.4

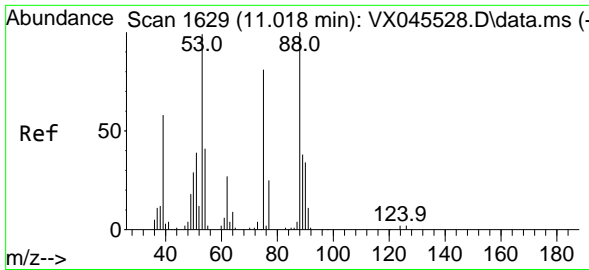


#76
 1,2,3-Trichloropropane
 Concen: 28.452 ug/l
 RT: 11.079 min Scan# 1639
 Delta R.T. -0.159 min
 Lab File: VX045818.D
 Acq: 17 Apr 2025 11:12



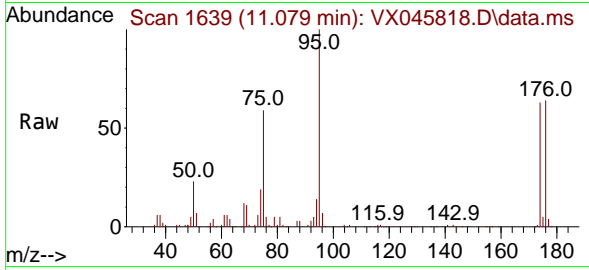
Tgt Ion: 75 Resp: 35647
 Ion Ratio Lower Upper
 75 100
 77 1.1 20.0 59.9#



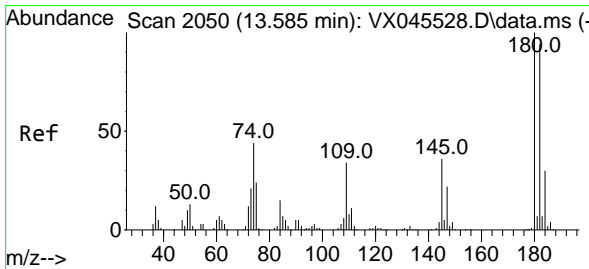
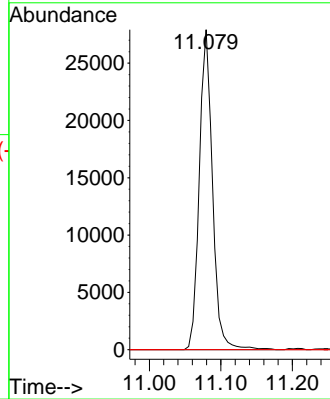
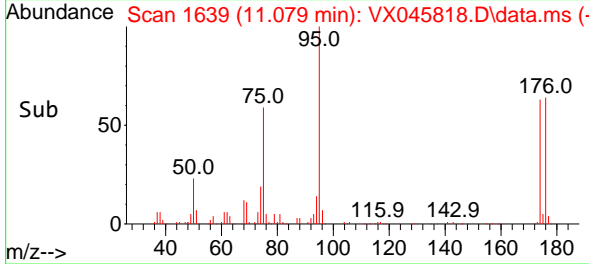


#81
 trans-1,4-Dichloro-2-butene
 Concen: 96.562 ug/l
 RT: 11.079 min Scan# 1
 Delta R.T. 0.061 min
 Lab File: VX045818.D
 Acq: 17 Apr 2025 11:12

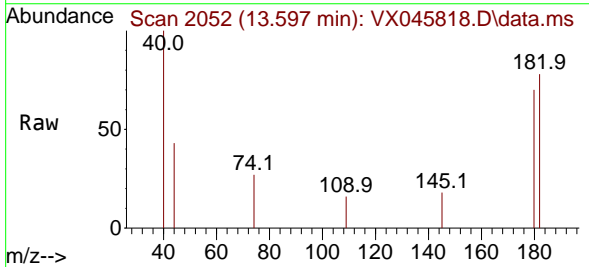
Instrument :
 MSVOA_X
 ClientSampleId :



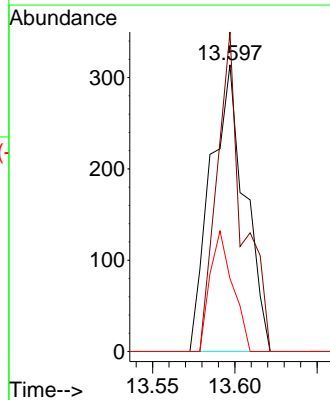
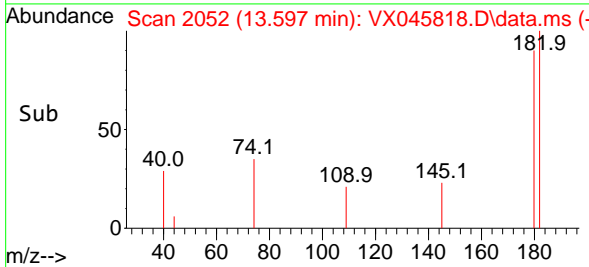
Tgt Ion: 75 Resp: 35647
 Ion Ratio Lower Upper
 75 100
 53 0.0 101.8 152.6#
 89 0.0 37.2 55.8#

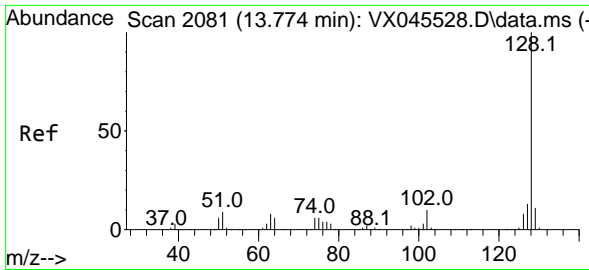


#93
 1,2,4-Trichlorobenzene
 Concen: 0.475 ug/l
 RT: 13.597 min Scan# 2052
 Delta R.T. 0.012 min
 Lab File: VX045818.D
 Acq: 17 Apr 2025 11:12



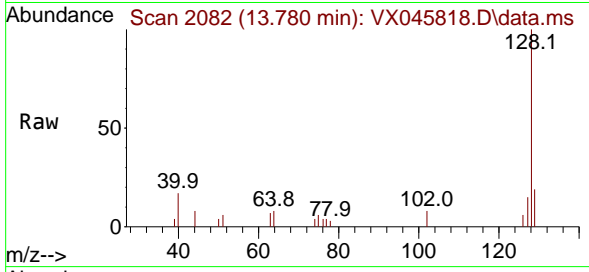
Tgt Ion: 180 Resp: 455
 Ion Ratio Lower Upper
 180 100
 182 84.0 47.9 143.6
 145 27.9 17.9 53.8



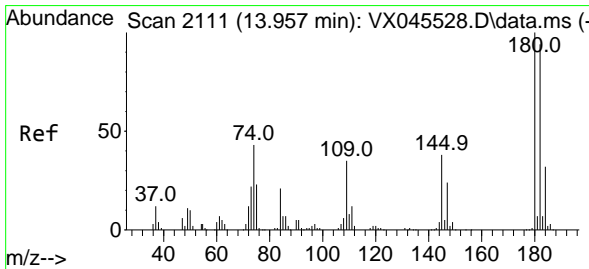
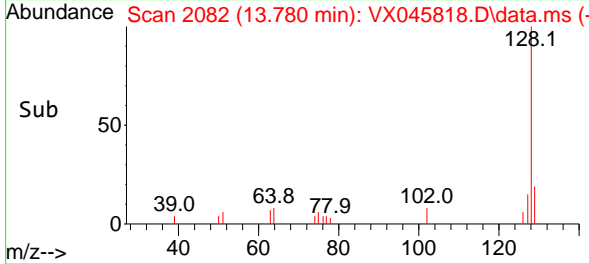
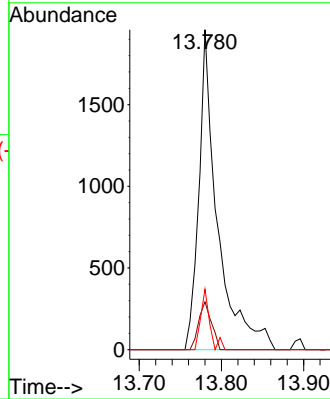


#95
 Naphthalene
 Concen: 0.865 ug/l
 RT: 13.780 min Scan# 2081
 Delta R.T. 0.006 min
 Lab File: VX045818.D
 Acq: 17 Apr 2025 11:12

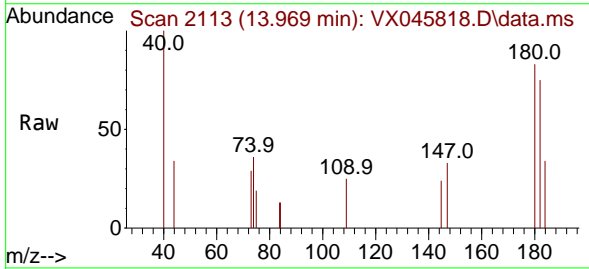
Instrument : MSVOA_X
 ClientSampleId :



Tgt Ion:128 Resp: 3083
 Ion Ratio Lower Upper
 128 100
 127 10.2 10.3 15.5#
 129 9.1 8.6 12.8



#96
 1,2,3-Trichlorobenzene
 Concen: 0.579 ug/l
 RT: 13.969 min Scan# 2113
 Delta R.T. 0.012 min
 Lab File: VX045818.D
 Acq: 17 Apr 2025 11:12



Tgt Ion:180 Resp: 581
 Ion Ratio Lower Upper
 180 100
 182 105.5 47.3 141.8
 145 32.9 18.2 54.6

