

Data Path : Z:\VOASRV\HPCHEM1\MSVOA X\DATA\ VX041819\
 Data File : VX009052.D
 Acq On : 18 Apr 2019 18:29
 Operator : JC/SP
 Sample : K2461-02
 Misc : 5.0mL/MSVOA X/WATER
 ALS Vial : 23 Sample Multiplier: 1

Instrument :
 MSVOA_X
 ClientSampled :
 PZ-02

Quant Time: Apr 19 01:39:54 2019
 Quant Method : Z:\VOASRV\HPCHEM1\MSVOA_X\METHOD\82X041519W.M
 Quant Title : SW846 8260
 QLast Update : Wed Apr 17 06:47:58 2019
 Response via : Initial Calibration

Internal Standards	R.T.	QIon	Response	Conc	Units	Dev(Min)
1) Pentafluorobenzene	5.67	168	229877	50.00	ug/l	0.00
34) 1,4-Difluorobenzene	6.86	114	371443	50.00	ug/l	0.00
63) Chlorobenzene-d5	10.12	117	319173	50.00	ug/l	0.00
72) 1,4-Dichlorobenzene-d4	12.08	152	135244	50.00	ug/l	0.00

System Monitoring Compounds

33) 1,2-Dichloroethane-d4	6.07	65	156415	48.28	ug/l	0.00
Spiked Amount	50.000		Recovery	=	96.56%	
35) Dibromofluoromethane	5.50	113	113868	47.77	ug/l	0.00
Spiked Amount	50.000		Recovery	=	95.54%	
50) Toluene-d8	8.71	98	461975	48.59	ug/l	0.00
Spiked Amount	50.000		Recovery	=	97.18%	
62) 4-Bromofluorobenzene	11.13	95	152324	45.39	ug/l	0.00
Spiked Amount	50.000		Recovery	=	90.78%	

Target Compounds

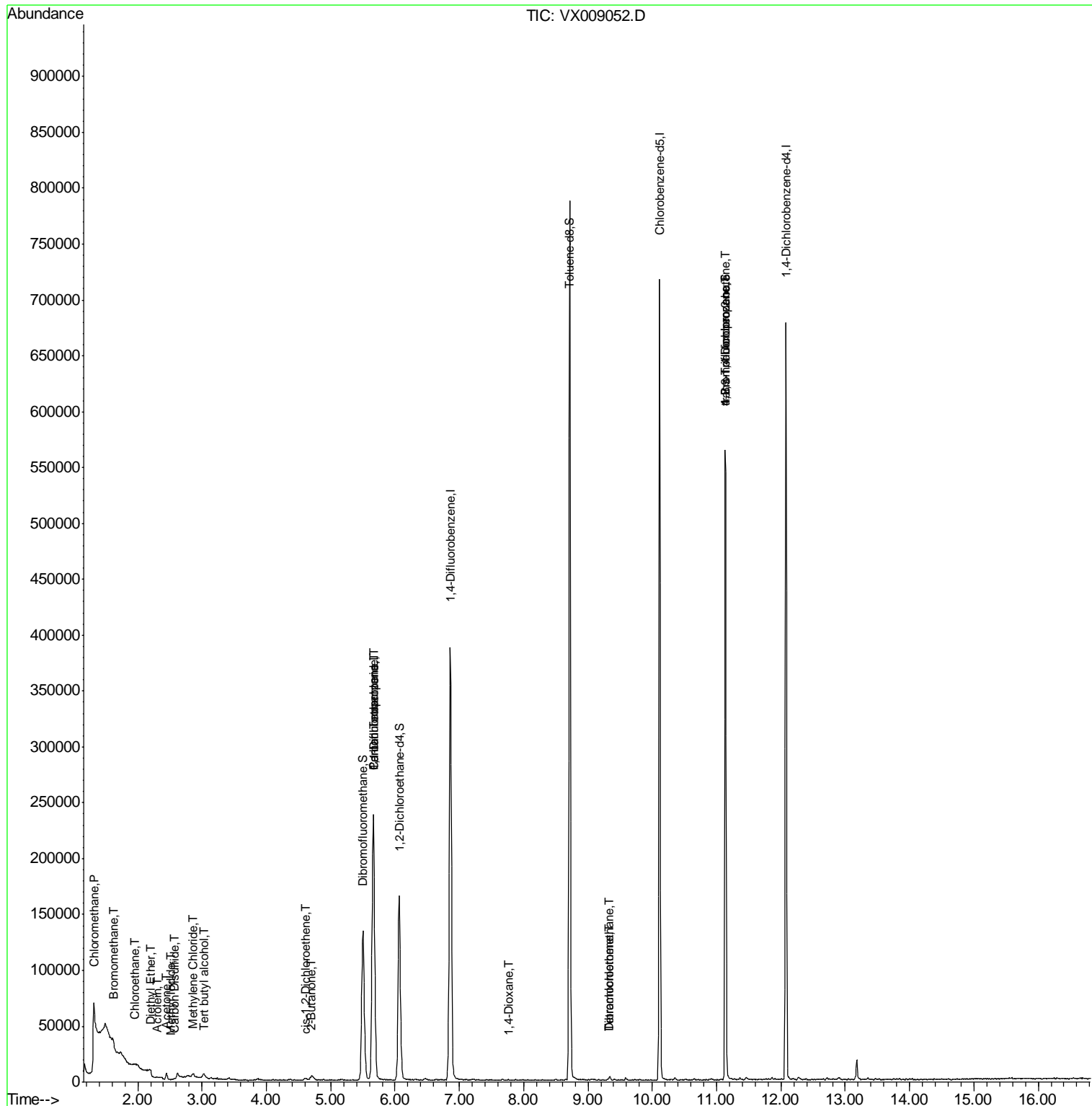
						Qvalue
3) Chloromethane	1.33	50	2911	0.896	ug/l #	56
5) Bromomethane	1.64	94	373	4.022	ug/l #	36
6) Chloroethane	1.96	64	1797	0.966	ug/l #	61
8) Diethyl Ether	2.20	74	369	0.218	ug/l	95
10) Methyl Iodide	2.52	142	67	4.438	ug/l #	76
11) Tert butyl alcohol	3.04	59	1680	2.336	ug/l #	78
13) Acrolein	2.30	56	555	0.893	ug/l #	63
16) Acetone	2.45	43	5558	3.308	ug/l	96
17) Carbon Disulfide	2.57	76	2253	1.556	ug/l #	81
20) Methylene Chloride	2.87	84	1403	0.488	ug/l #	71
25) 2-Butanone	4.70	43	779	0.290	ug/l	97
27) cis-1,2-Dichloroethene	4.62	96	1064	0.356	ug/l #	64
28) Bromochloromethane	5.01	49	48	Below Cal	#	21
36) 1,1-Dichloropropene	5.66	75	18305	4.765	ug/l #	51
38) Carbon Tetrachloride	5.67	117	22098	6.785	ug/l #	18
49) 1,4-Dioxane	7.76	88	69	0.937	ug/l #	1
60) Dibromochloromethane	9.34	129	535	0.207	ug/l #	10
64) Tetrachloroethene	9.34	164	490	0.202	ug/l	84
76) 1,2,3-Trichloropropane	11.13	75	77027	23.325	ug/l #	33
81) trans-1,4-Dichloro-2-buten	11.13	75	77027	59.881	ug/l #	11

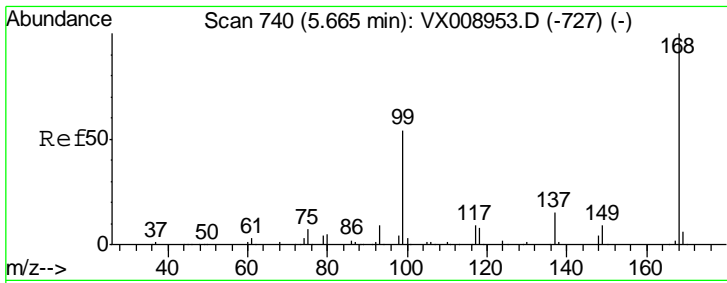
(#) = qualifier out of range (m) = manual integration (+) = signals summed

Data Path : Z:\VOASRV\HPCHEM1\MSVOA X\DATA\VX041819\
 Data File : VX009052.D
 Acq On : 18 Apr 2019 18:29
 Operator : JC/SP
 Sample : K2461-02
 Misc : 5.0mL/MSVOA X/WATER
 ALS Vial : 23 Sample Multiplier: 1

Instrument :
 MSVOA_X
 Client Sampled :
 PZ-02

Quant Time: Apr 19 01:39:54 2019
 Quant Method : Z:\VOASRV\HPCHEM1\MSVOA_X\METHOD\82X041519W.M
 Quant Title : SW846 8260
 QLast Update : Wed Apr 17 06:47:58 2019
 Response via : Initial Calibration



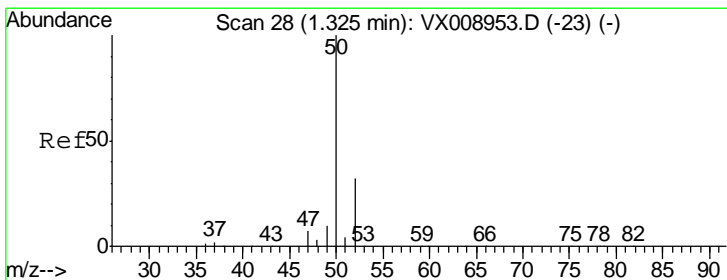
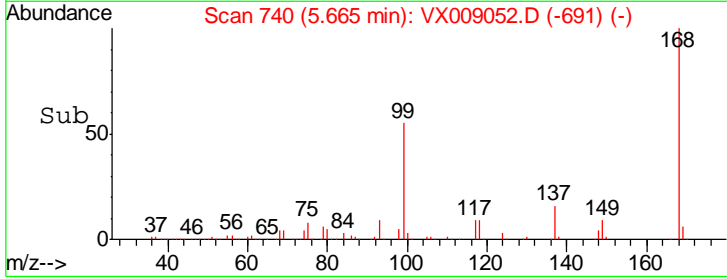
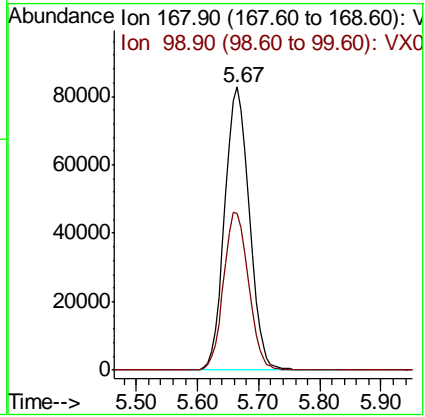
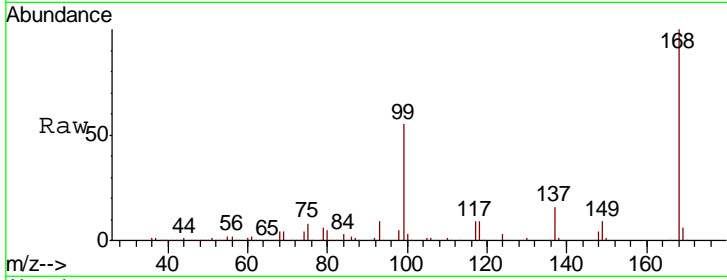


#1
 Pentafluorobenzene
 Concen: 50.000 ug/l
 RT: 5.67 min Scan# 740
 Delta R.T. -0.00 min
 Lab File: VX009052.D
 Acq: 18 Apr 2019 18:29

Instrument : MSVOA_X
 ClientSampled : PZ-02

Tgt Ion: 168 Resp: 229877

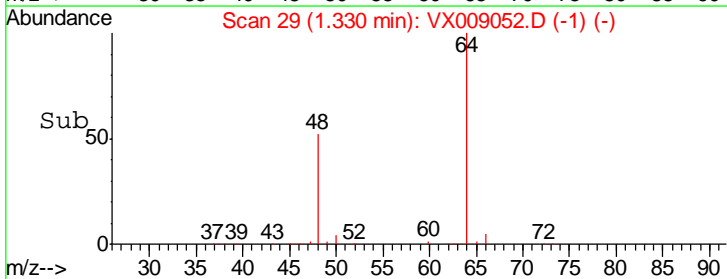
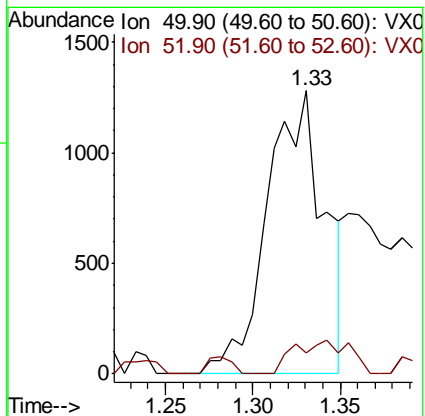
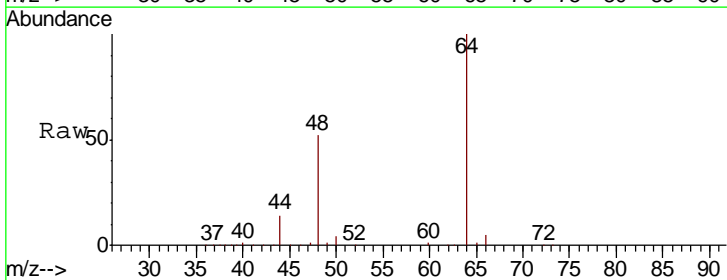
Ion	Ratio	Lower	Upper
168	100		
99	55.3	43.0	64.6

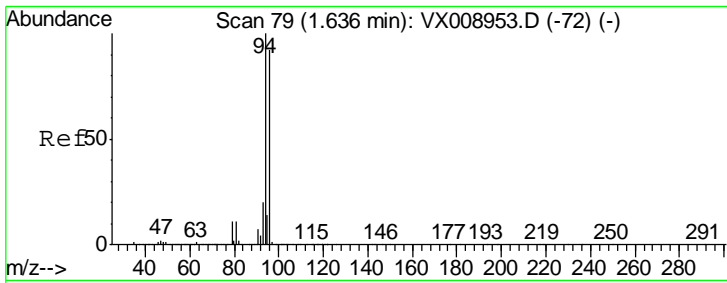


#3
 Chloromethane
 Concen: 0.896 ug/l
 RT: 1.33 min Scan# 29
 Delta R.T. 0.01 min
 Lab File: VX009052.D
 Acq: 18 Apr 2019 18:29

Tgt Ion: 50 Resp: 2911

Ion	Ratio	Lower	Upper
50	100		
52	7.3	25.5	38.3#

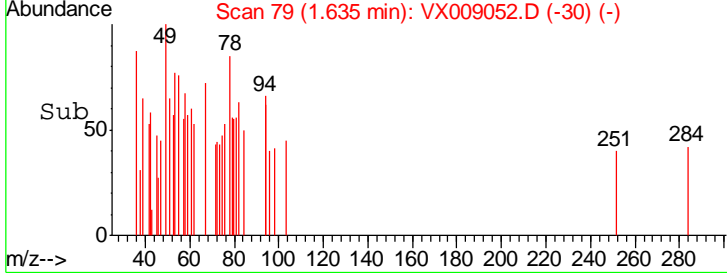
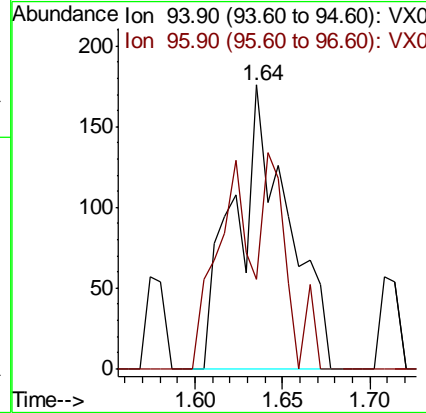
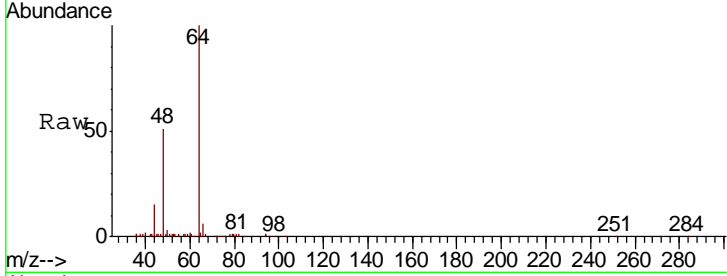




#5
 Bromomethane
 Concen: 4.022 ug/l
 RT: 1.64 min Scan# 79
 Delta R.T. 0.00 min
 Lab File: VX009052.D
 Acq: 18 Apr 2019 18:29

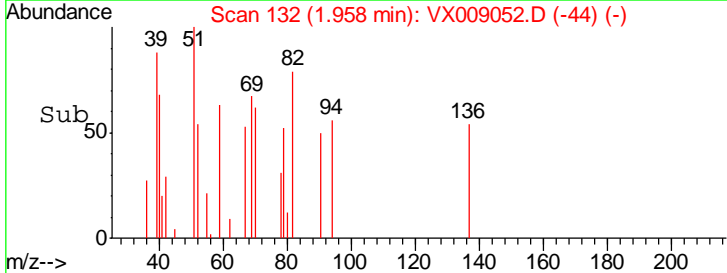
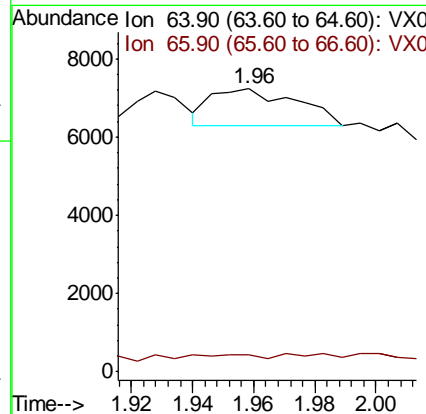
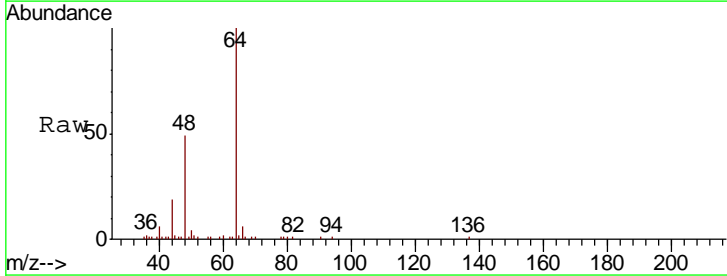
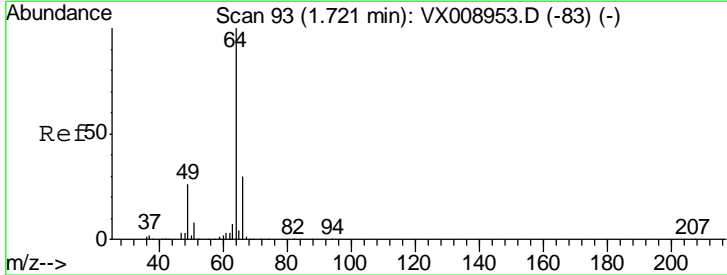
Instrument : MSVOA_X
 ClientSampled : PZ-02

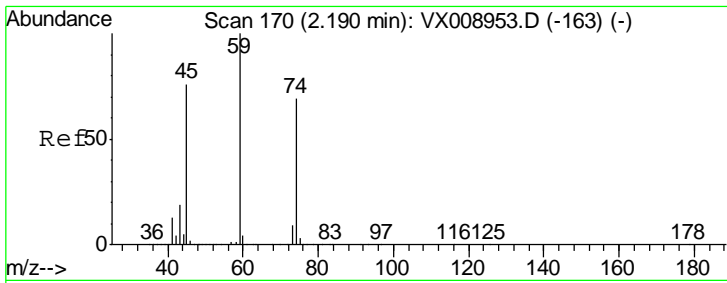
Tgt Ion: 94 Resp: 373
 Ion Ratio Lower Upper
 94 100
 96 31.2 73.9 110.9#



#6
 Chloroethane
 Concen: 0.966 ug/l
 RT: 1.96 min Scan# 132
 Delta R.T. 0.24 min
 Lab File: VX009052.D
 Acq: 18 Apr 2019 18:29

Tgt Ion: 64 Resp: 1797
 Ion Ratio Lower Upper
 64 100
 66 9.2 24.2 36.2#

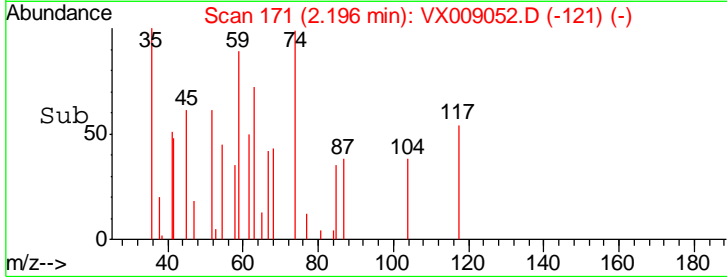
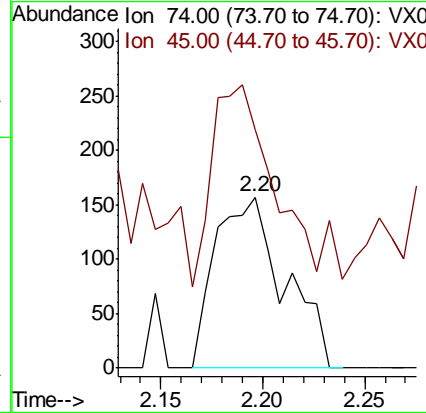
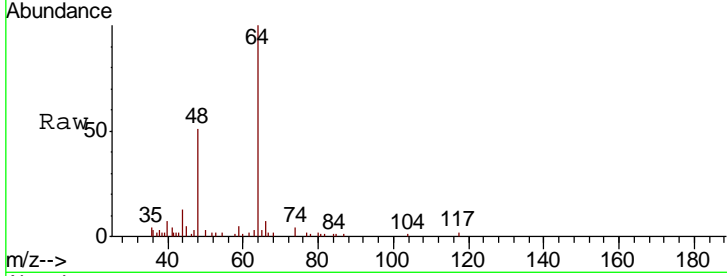




#8
 Diethyl Ether
 Concen: 0.218 ug/l
 RT: 2.20 min Scan# 171
 Delta R.T. 0.01 min
 Lab File: VX009052.D
 Acq: 18 Apr 2019 18:29

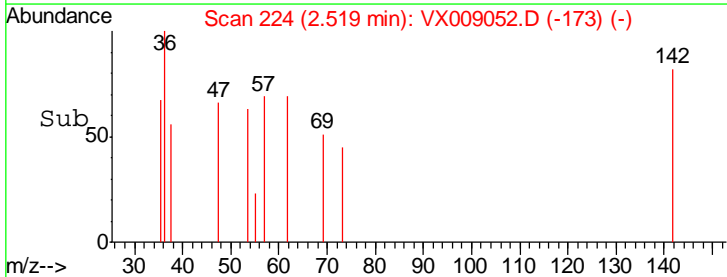
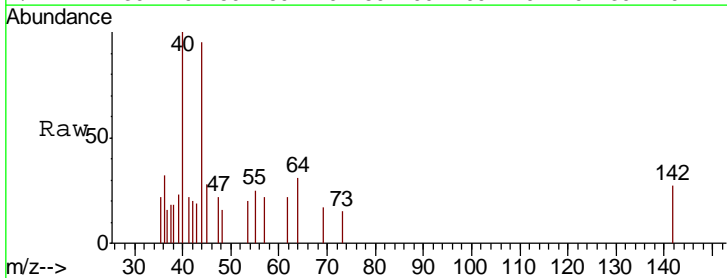
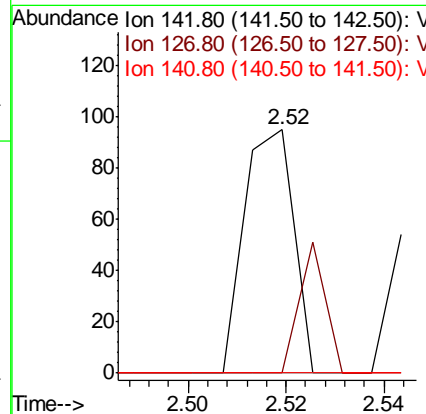
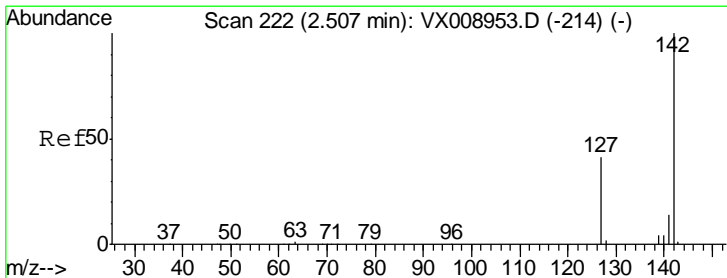
Instrument :
 MSVOA_X
ClientSampled :
 PZ-02

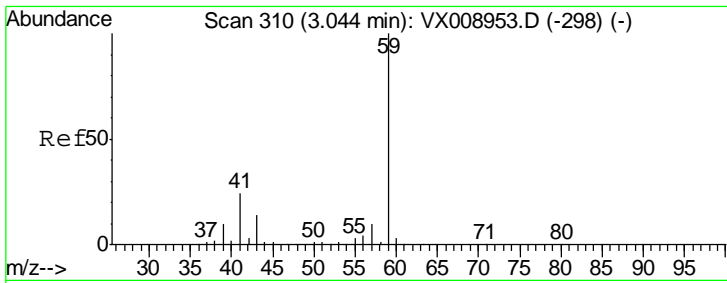
Tgt Ion	Resp	Lower	Upper
74	100		
45	104.9	54.9	164.8



#10
 Methyl Iodide
 Concen: 4.438 ug/l
 RT: 2.52 min Scan# 224
 Delta R.T. 0.01 min
 Lab File: VX009052.D
 Acq: 18 Apr 2019 18:29

Tgt Ion	Resp	Lower	Upper
142	100		
127	28.4	32.8	49.2#
141	0.0	11.4	17.2#

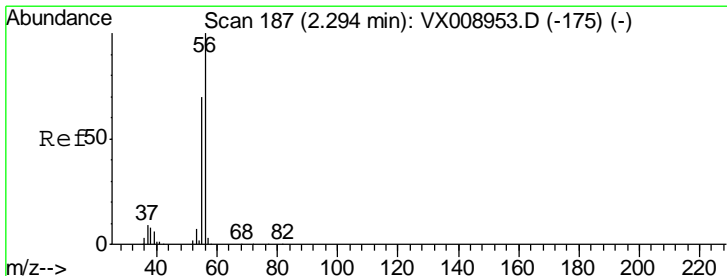
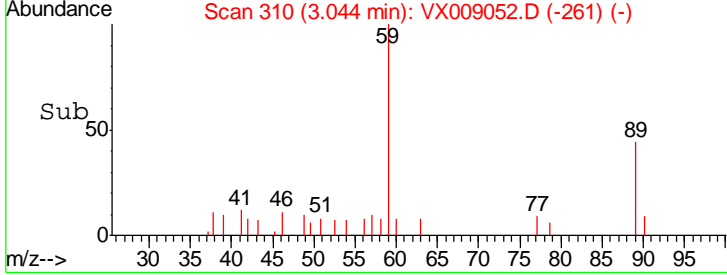
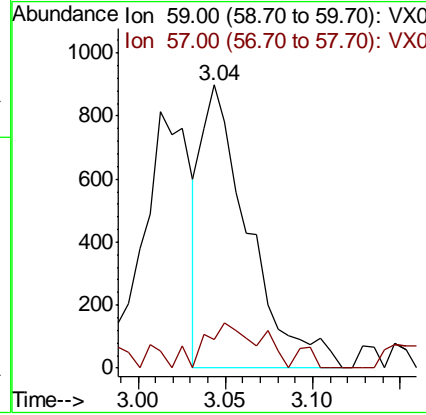
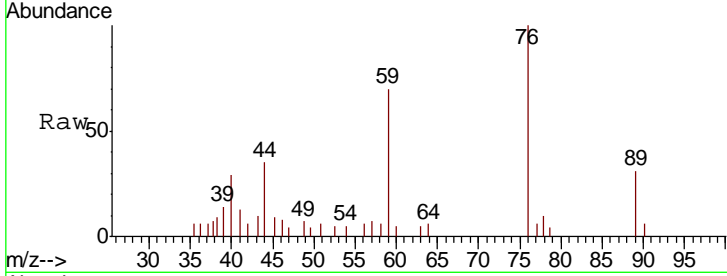




#11
 Tert butyl alcohol
 Concen: 2.336 ug/l
 RT: 3.04 min Scan# 310
 Delta R.T. -0.00 min
 Lab File: VX009052.D
 Acq: 18 Apr 2019 18:29

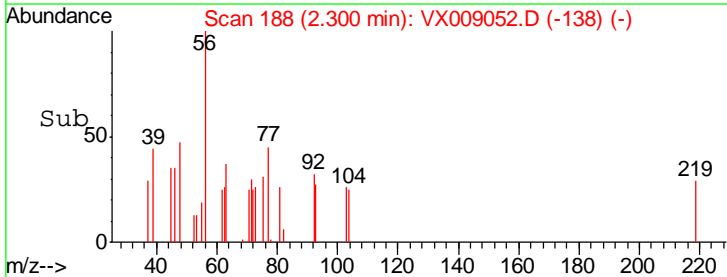
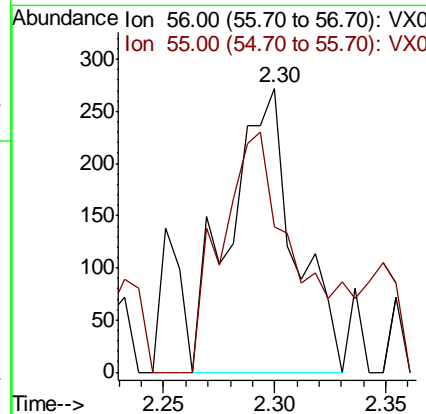
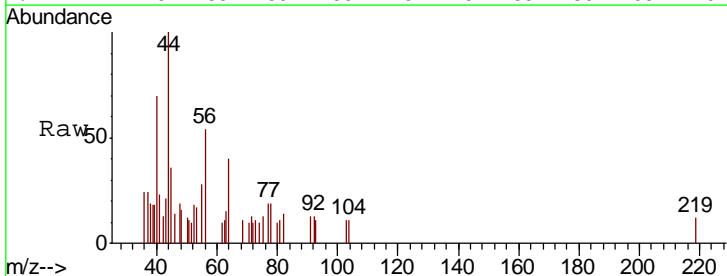
Instrument : MSVOA_X
 ClientSampled : PZ-02

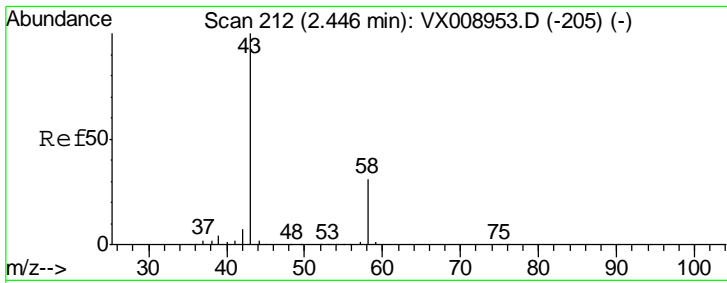
Tgt Ion	Resp	Lower	Upper
59	1680		
57	18.9	8.4	12.6#



#13
 Acrolein
 Concen: 0.893 ug/l
 RT: 2.30 min Scan# 188
 Delta R.T. 0.01 min
 Lab File: VX009052.D
 Acq: 18 Apr 2019 18:29

Tgt Ion	Resp	Lower	Upper
56	555		
55	101.4	56.6	84.8#

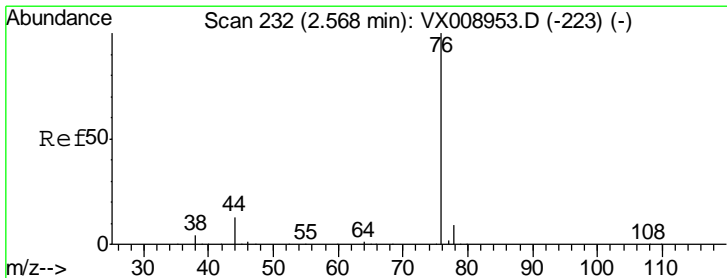
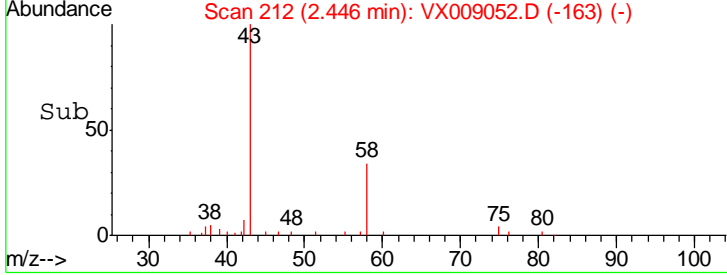
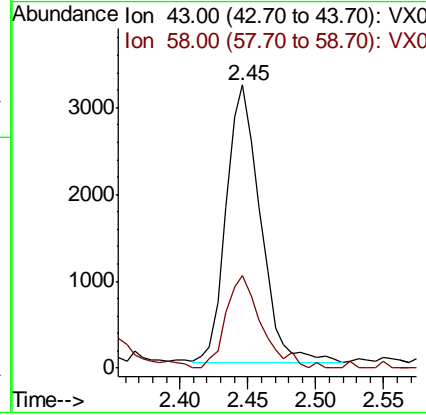
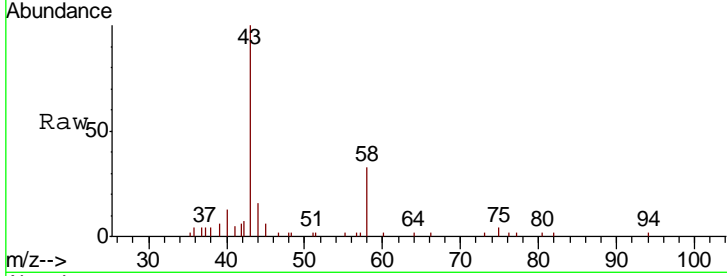




#16
 Acetone
 Concen: 3.308 ug/l
 RT: 2.45 min Scan# 212
 Delta R.T. -0.00 min
 Lab File: VX009052.D
 Acq: 18 Apr 2019 18:29

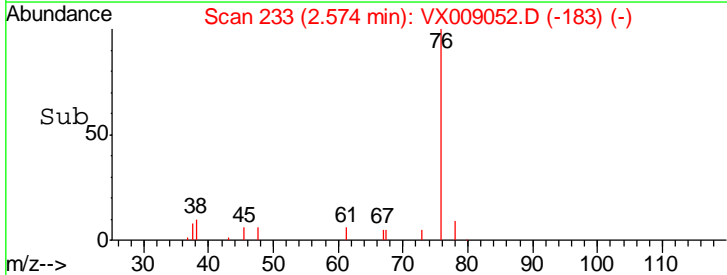
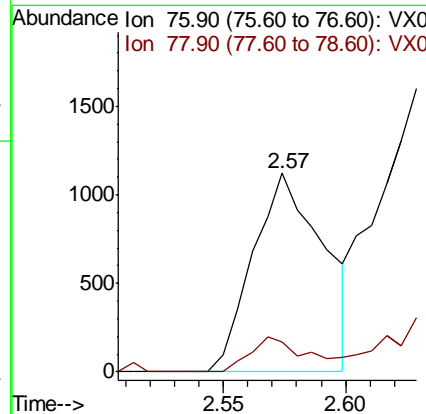
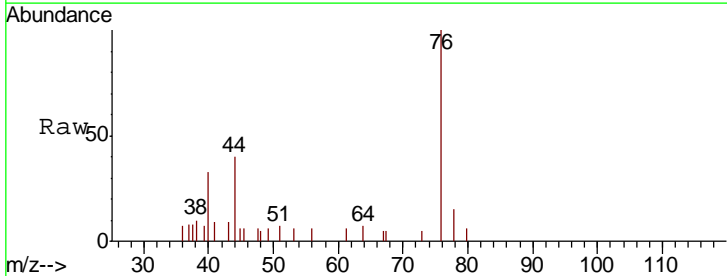
Instrument :
 MSVOA_X
 ClientSampled :
 PZ-02

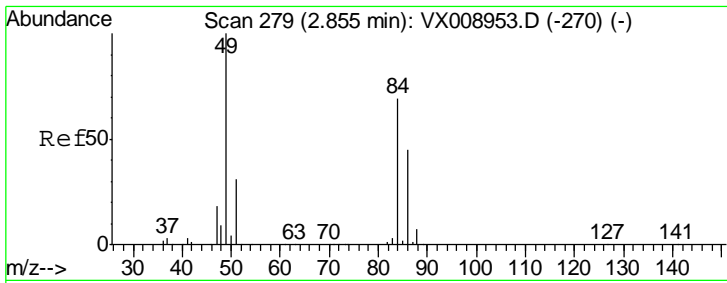
Tgt Ion	Resp	Lower	Upper
43	100		
58	33.2	24.8	37.2



#17
 Carbon Disulfide
 Concen: 1.556 ug/l
 RT: 2.57 min Scan# 233
 Delta R.T. 0.01 min
 Lab File: VX009052.D
 Acq: 18 Apr 2019 18:29

Tgt Ion	Resp	Lower	Upper
76	100		
78	15.7	7.2	10.8#

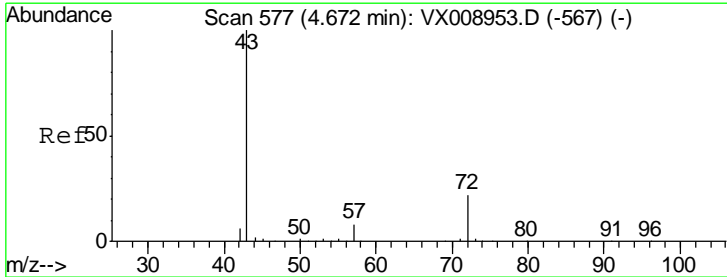
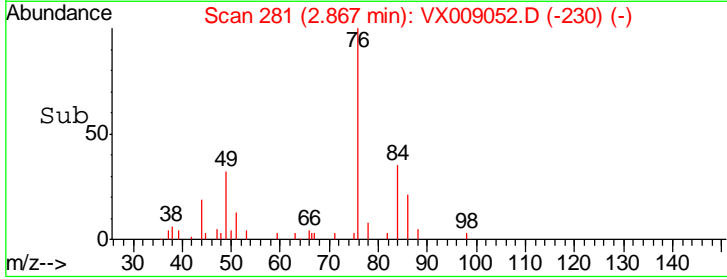
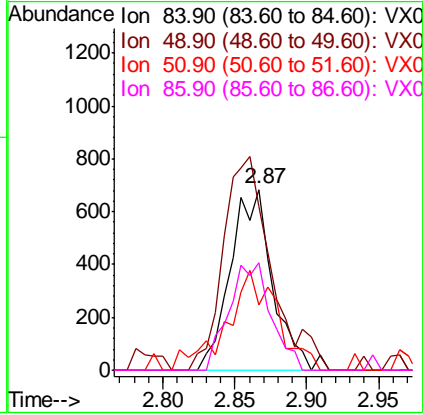
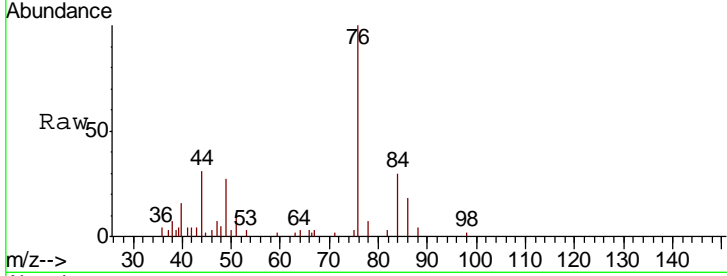




#20
 Methylene Chloride
 Concen: 0.488 ug/l
 RT: 2.87 min Scan# 281
 Delta R.T. 0.01 min
 Lab File: VX009052.D
 Acq: 18 Apr 2019 18:29

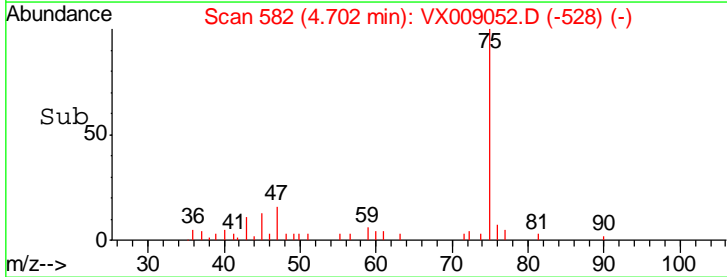
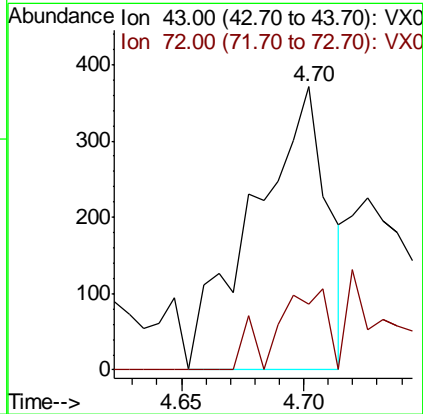
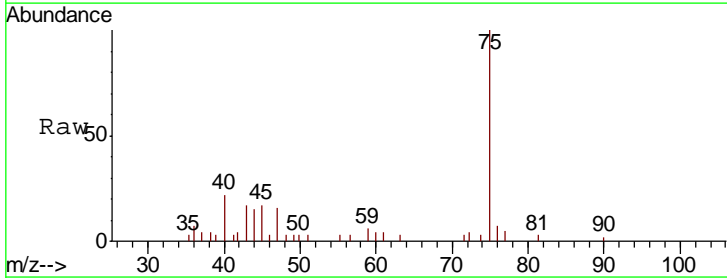
Instrument : MSVOA_X
 ClientSampled : PZ-02

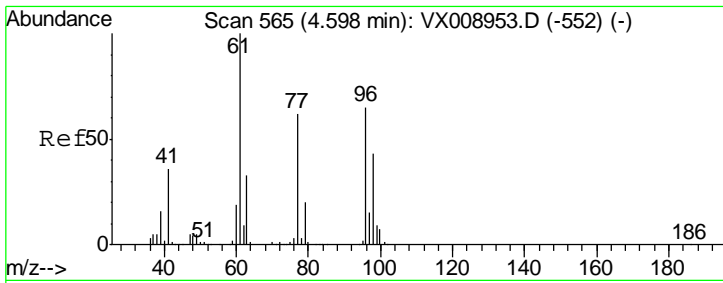
Tgt Ion	Resp	Lower	Upper
84	1403		
49	90.5	115.4	173.0#
51	36.0	35.8	53.6
86	59.7	52.1	78.1



#25
 2-Butanone
 Concen: 0.290 ug/l
 RT: 4.70 min Scan# 582
 Delta R.T. 0.03 min
 Lab File: VX009052.D
 Acq: 18 Apr 2019 18:29

Tgt Ion	Resp	Lower	Upper
43	779		
72	23.5	17.5	26.3

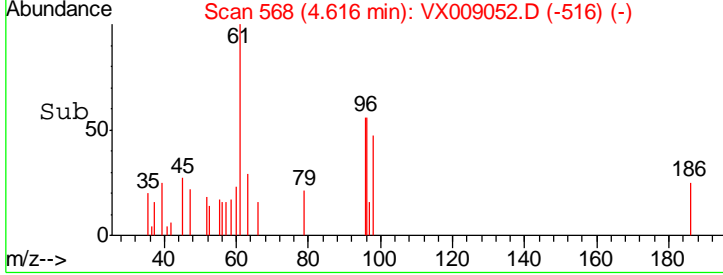
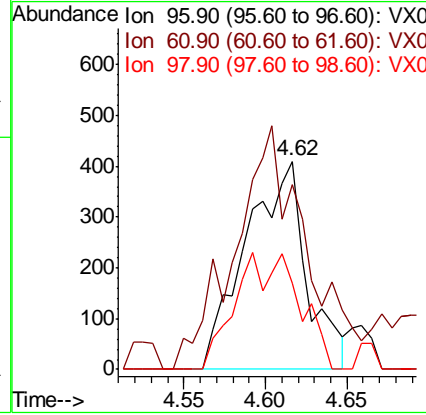
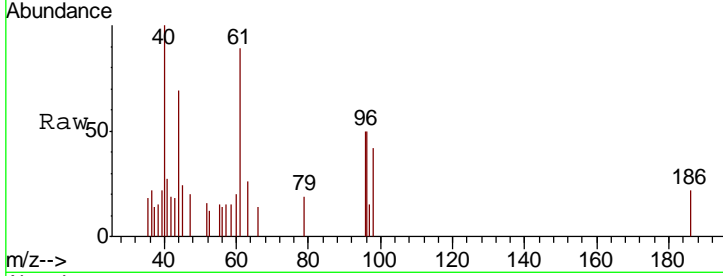




#27
 cis-1,2-Dichloroethene
 Concen: 0.356 ug/l
 RT: 4.62 min Scan# 568
 Delta R.T. 0.02 min
 Lab File: VX009052.D
 Acq: 18 Apr 2019 18:29

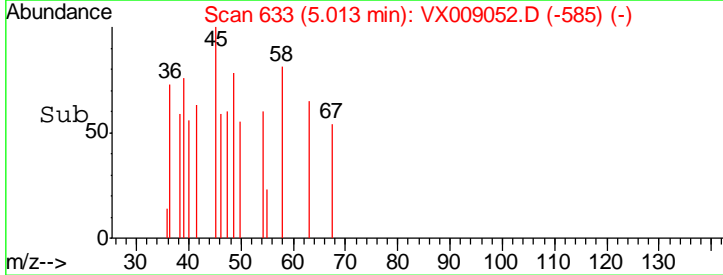
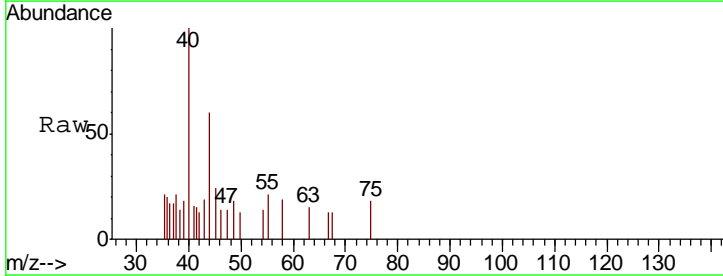
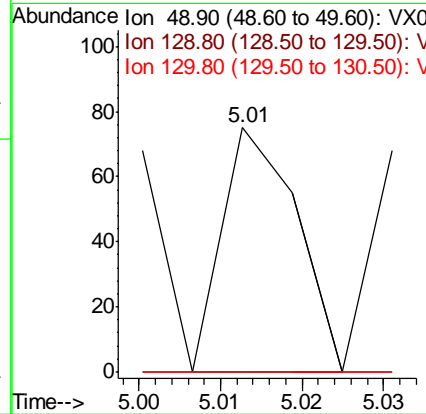
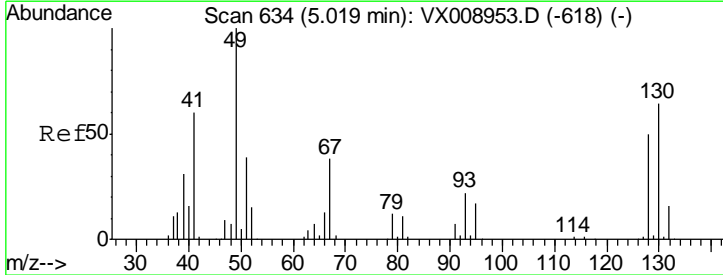
Instrument : MSVOA_X
 ClientSampled : PZ-02

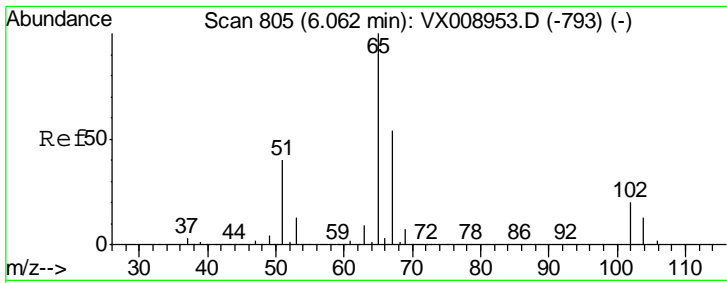
Tgt Ion	Resp	Lower	Upper
96	1064		
61	137.0	0.0	322.0
98	0.0	0.0	128.4



#28
 Bromochloromethane
 Concen: Below Cal
 RT: 5.01 min Scan# 633
 Delta R.T. -0.01 min
 Lab File: VX009052.D
 Acq: 18 Apr 2019 18:29

Tgt Ion	Resp	Lower	Upper
49	48		
129	0.0	0.0	3.6
130	0.0	50.4	75.6#

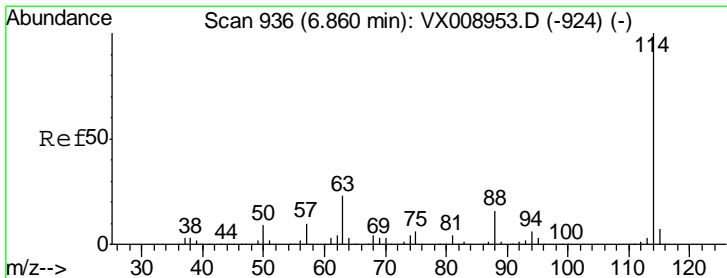
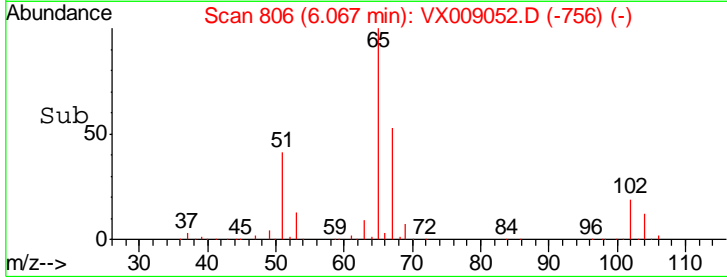
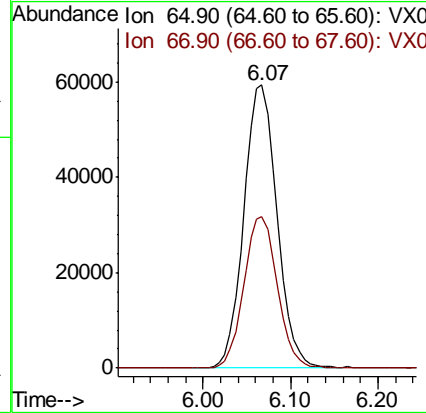
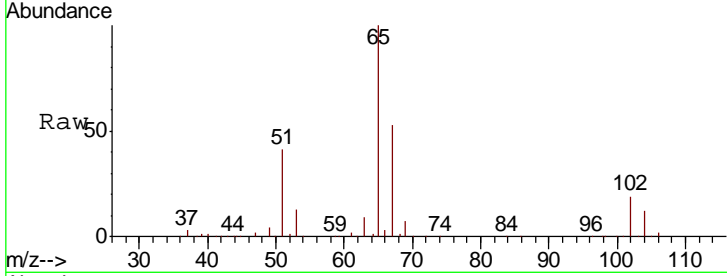




#33
 1,2-Dichloroethane-d4
 Concen: 48.282 ug/l
 RT: 6.07 min Scan# 806
 Delta R.T. 0.01 min
 Lab File: VX009052.D
 Acq: 18 Apr 2019 18:29

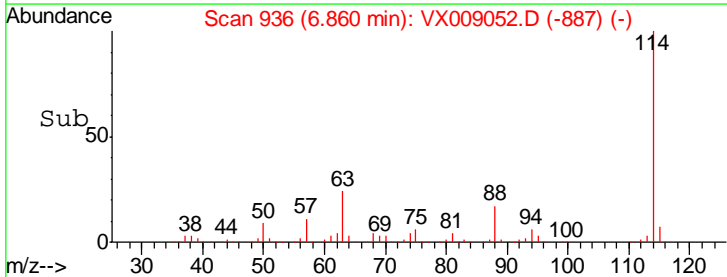
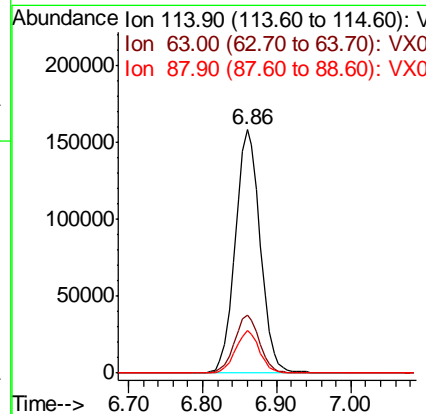
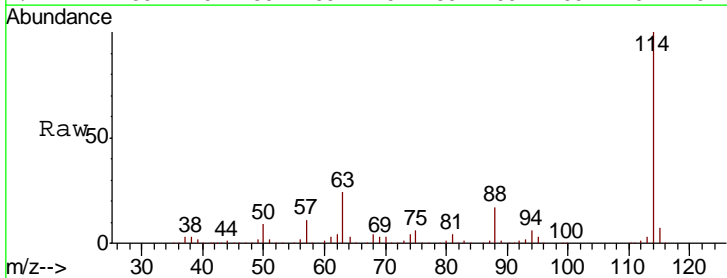
Instrument :
 MSVOA_X
 ClientSampled :
 PZ-02

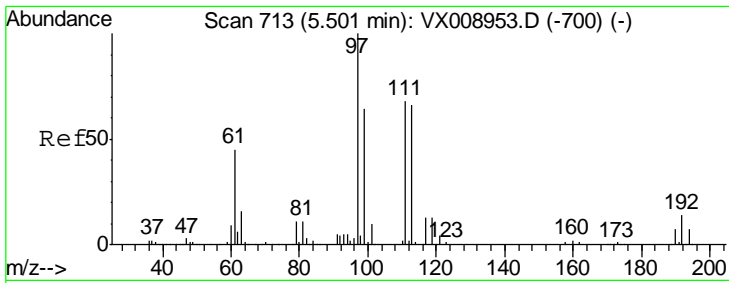
Tgt Ion: 65 Resp: 156415
 Ion Ratio Lower Upper
 65 100
 67 54.1 0.0 108.6



#34
 1,4-Difluorobenzene
 Concen: 50.000 ug/l
 RT: 6.86 min Scan# 936
 Delta R.T. -0.00 min
 Lab File: VX009052.D
 Acq: 18 Apr 2019 18:29

Tgt Ion: 114 Resp: 371443
 Ion Ratio Lower Upper
 114 100
 63 23.7 0.0 46.0
 88 17.3 0.0 32.6

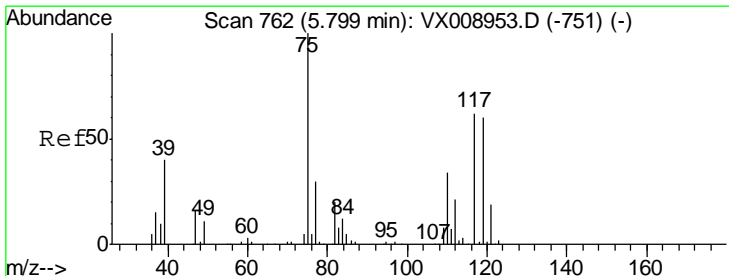
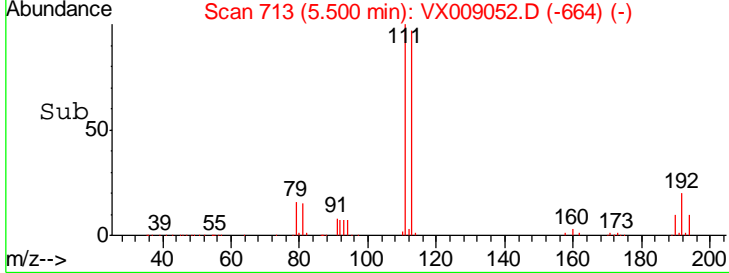
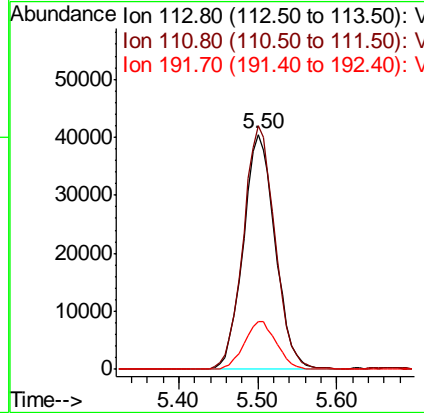
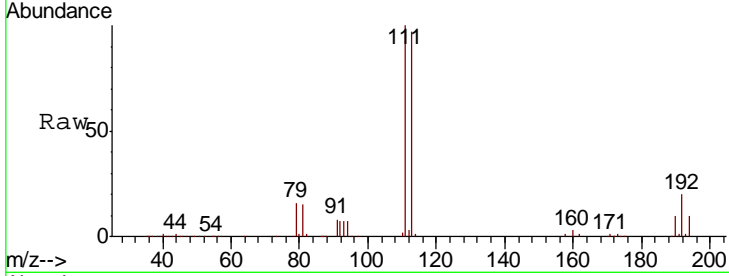




#35
 Dibromofluoromethane
 Concen: 47.767 ug/l
 RT: 5.50 min Scan# 713
 Delta R.T. -0.00 min
 Lab File: VX009052.D
 Acq: 18 Apr 2019 18:29

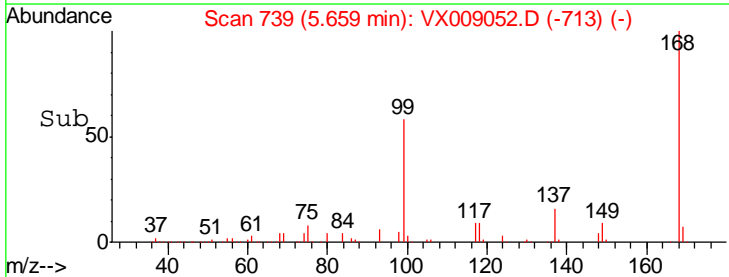
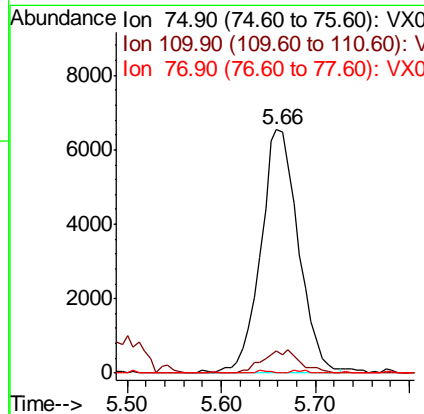
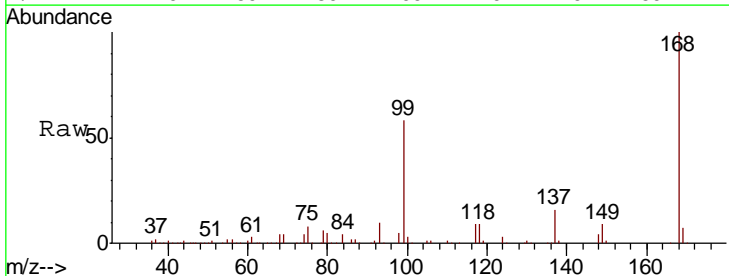
Instrument :
 MSVOA_X
 ClientSampled :
 PZ-02

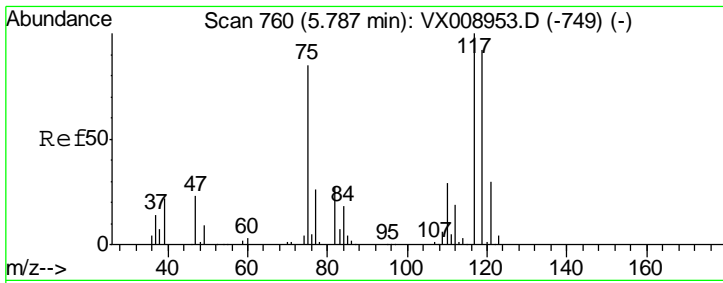
Tgt Ion	Resp	Lower	Upper
113	113868		
113	100		
111	103.1	82.9	124.3
192	20.6	17.4	26.0



#36
 1,1-Dichloropropene
 Concen: 4.765 ug/l
 RT: 5.66 min Scan# 739
 Delta R.T. -0.14 min
 Lab File: VX009052.D
 Acq: 18 Apr 2019 18:29

Tgt Ion	Resp	Lower	Upper
75	18305		
75	100		
110	9.4	16.9	50.7#
77	0.0	25.0	37.4#

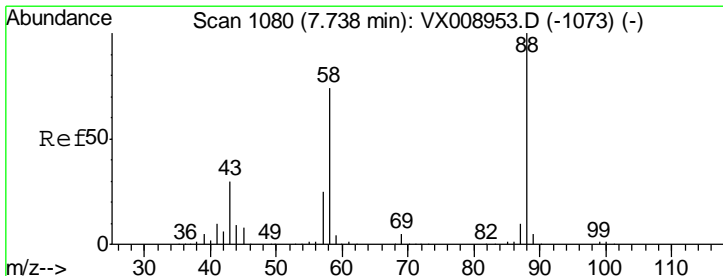
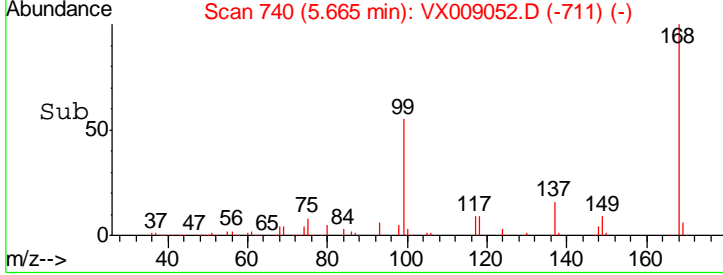
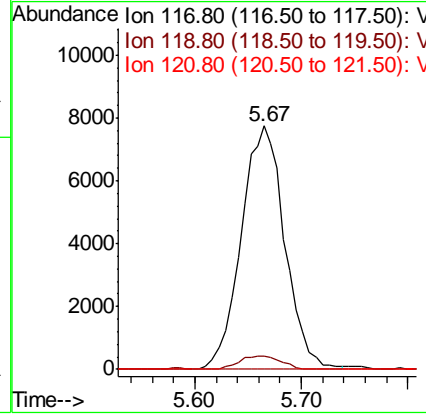
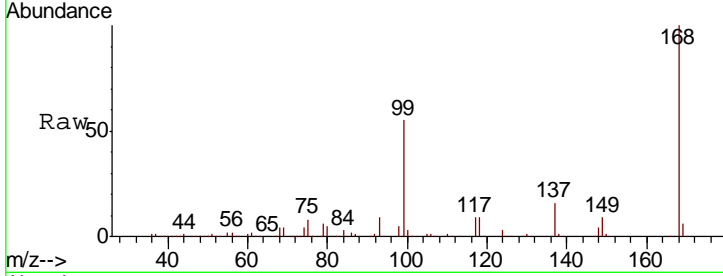




#38
 Carbon Tetrachloride
 Concen: 6.785 ug/l
 RT: 5.67 min Scan# 740
 Delta R.T. -0.12 min
 Lab File: VX009052.D
 Acq: 18 Apr 2019 18:29

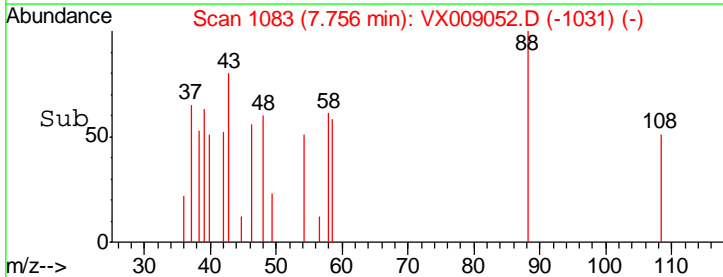
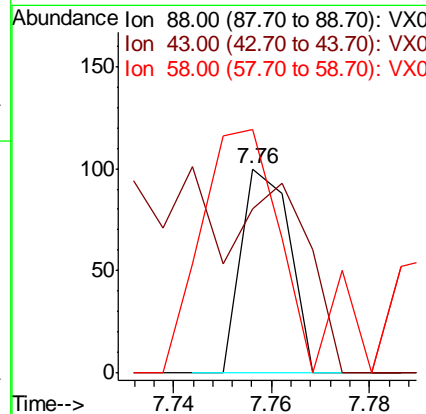
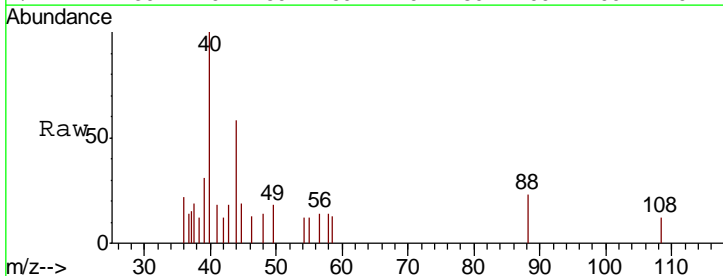
Instrument :
 MSVOA_X
 ClientSampled :
 PZ-02

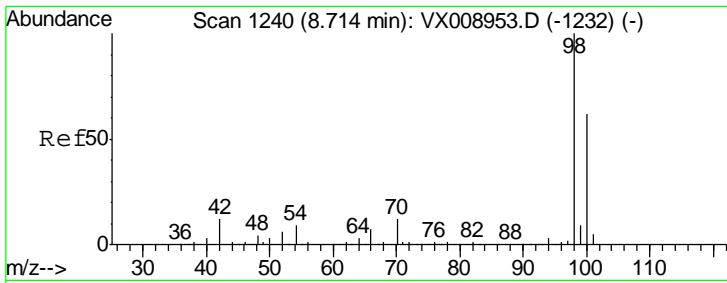
Tgt Ion	Resp	Lower	Upper
117	22098		
119	5.2	73.8	110.8#
121	0.0	23.6	35.4#



#49
 1,4-Dioxane
 Concen: 0.937 ug/l
 RT: 7.76 min Scan# 1083
 Delta R.T. 0.02 min
 Lab File: VX009052.D
 Acq: 18 Apr 2019 18:29

Tgt Ion	Resp	Lower	Upper
88	69		
88	100		
43	60.9	29.3	43.9#
58	188.4	62.6	93.8#

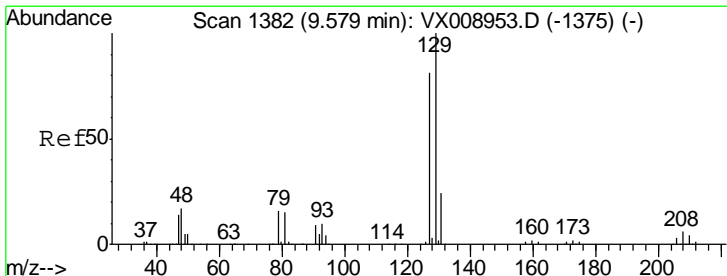
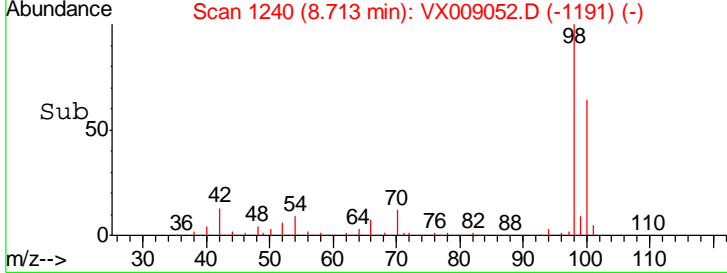
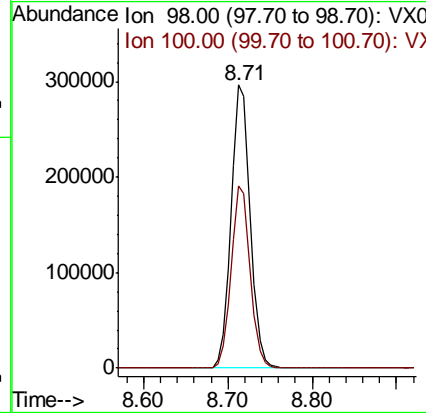
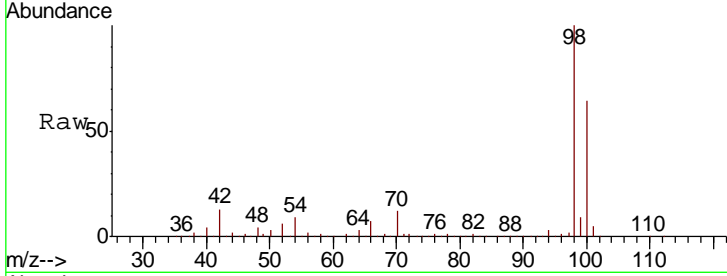




#50
 Toluene-d8
 Concen: 48.594 ug/l
 RT: 8.71 min Scan# 1240
 Delta R.T. -0.00 min
 Lab File: VX009052.D
 Acq: 18 Apr 2019 18:29

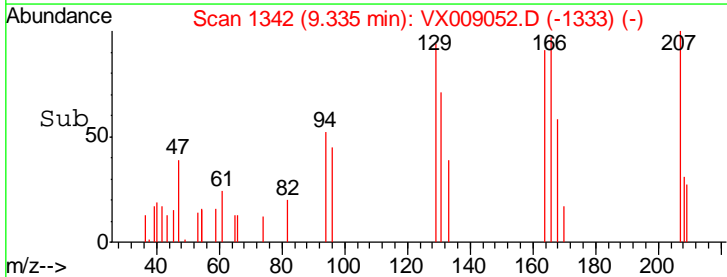
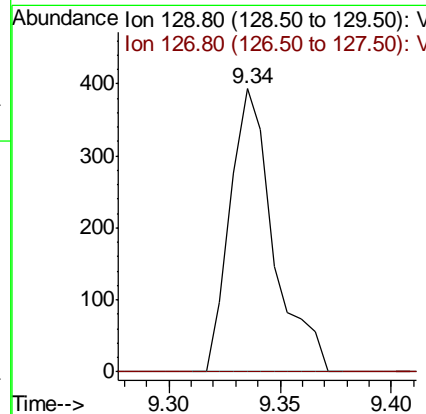
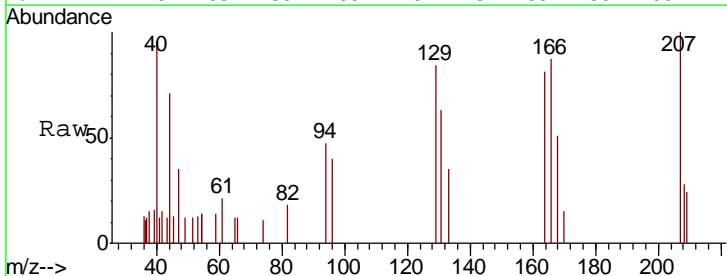
Instrument : MSVOA_X
 ClientSampled : PZ-02

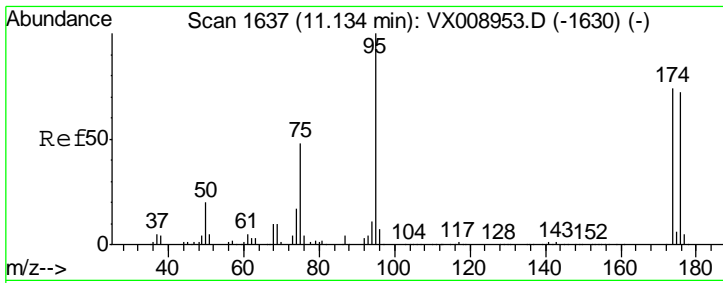
Tot Ion: 98 Resp: 461975
 Ion Ratio Lower Upper
 98 100
 100 63.9 51.4 77.2



#60
 Dibromochloromethane
 Concen: 0.207 ug/l
 RT: 9.34 min Scan# 1342
 Delta R.T. -0.24 min
 Lab File: VX009052.D
 Acq: 18 Apr 2019 18:29

Tgt Ion: 129 Resp: 535
 Ion Ratio Lower Upper
 129 100
 127 0.0 39.1 117.2#

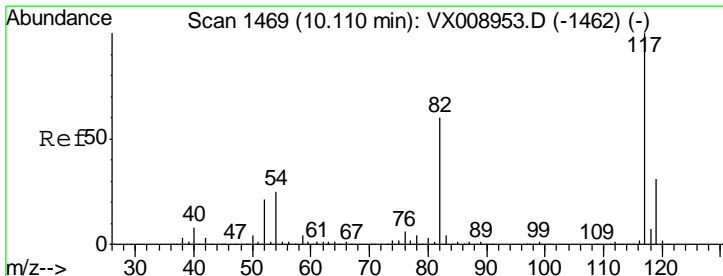
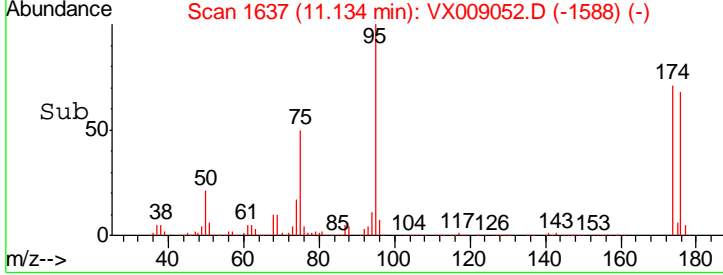
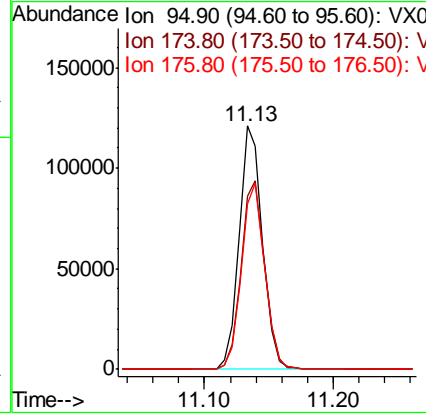
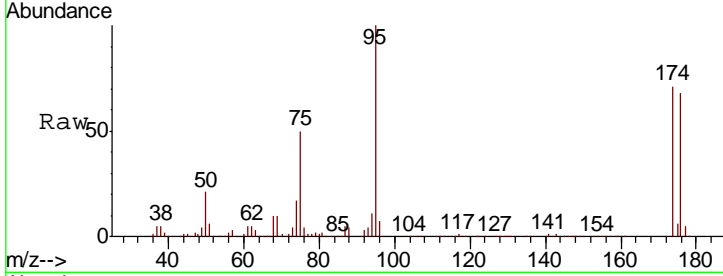




#62
 4-Bromofluorobenzene
 Concen: 45.389 ug/l
 RT: 11.13 min Scan# 1637
 Delta R.T. -0.00 min
 Lab File: VX009052.D
 Acq: 18 Apr 2019 18:29

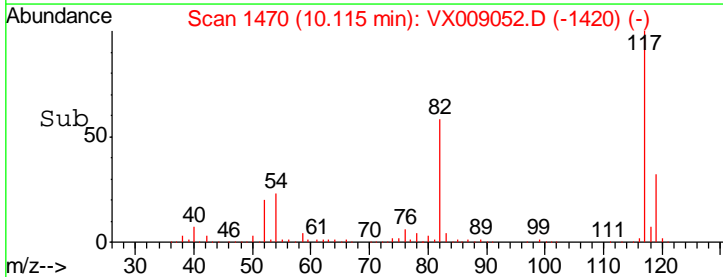
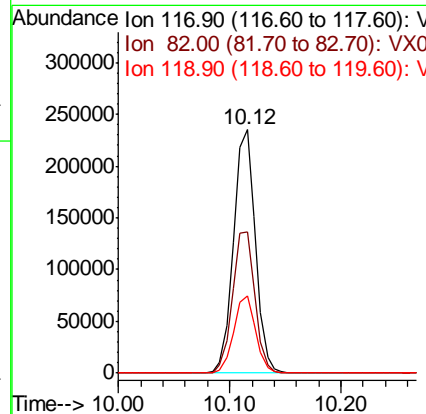
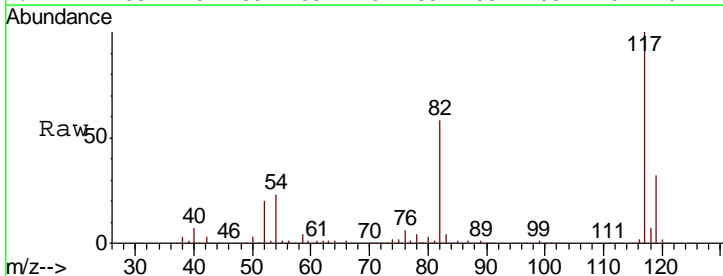
Instrument :
 MSVOA_X
 ClientSampled :
 PZ-02

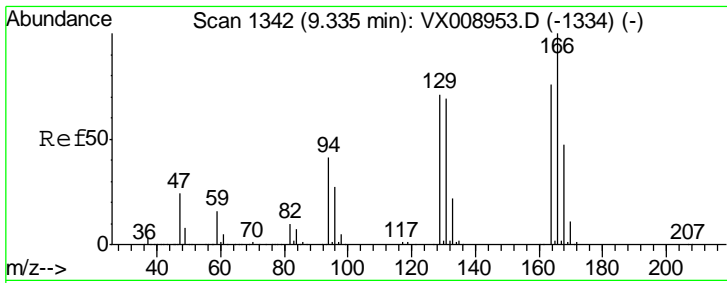
Tgt Ion	Resp	Lower	Upper
95	152324		
174	78.4	0.0	159.6
176	76.1	0.0	154.8



#63
 Chlorobenzene-d5
 Concen: 50.000 ug/l
 RT: 10.12 min Scan# 1470
 Delta R.T. 0.01 min
 Lab File: VX009052.D
 Acq: 18 Apr 2019 18:29

Tgt Ion	Resp	Lower	Upper
117	319173		
82	57.8	48.2	72.4
119	31.7	25.0	37.6

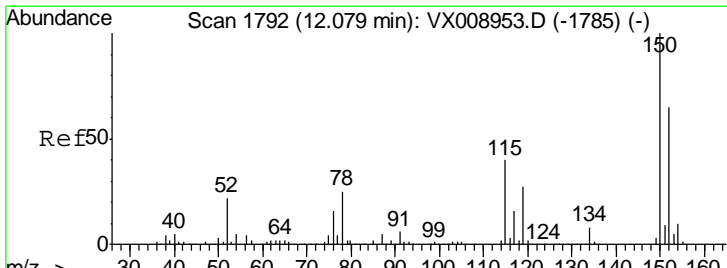
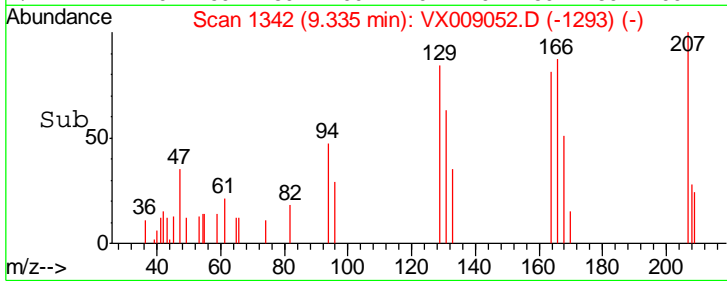
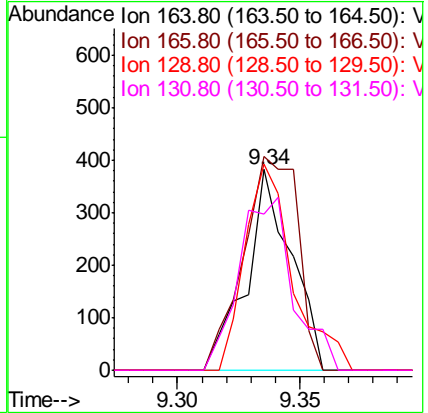
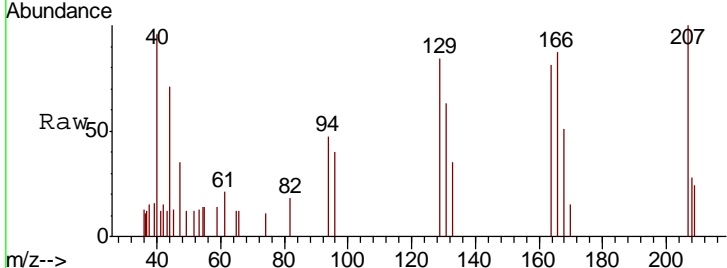




#64
 Tetrachloroethene
 Concen: 0.202 ug/l
 RT: 9.34 min Scan# 1342
 Delta R.T. -0.00 min
 Lab File: VX009052.D
 Acq: 18 Apr 2019 18:29

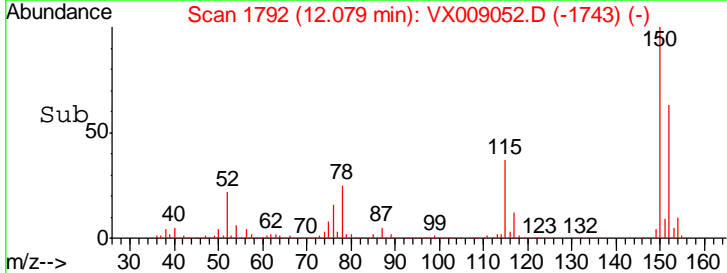
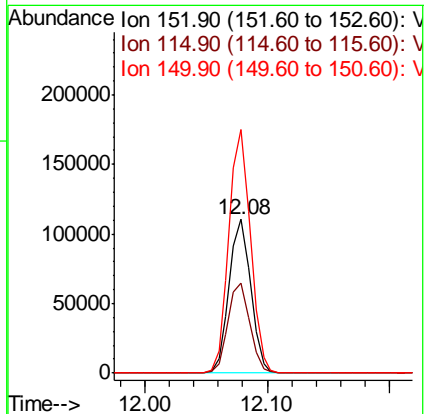
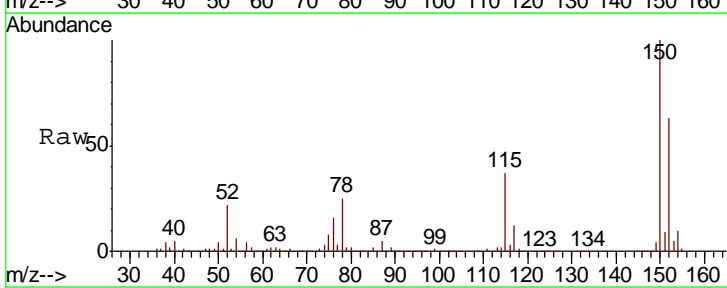
Instrument :
 MSVOA_X
 ClientSampled :
 PZ-02

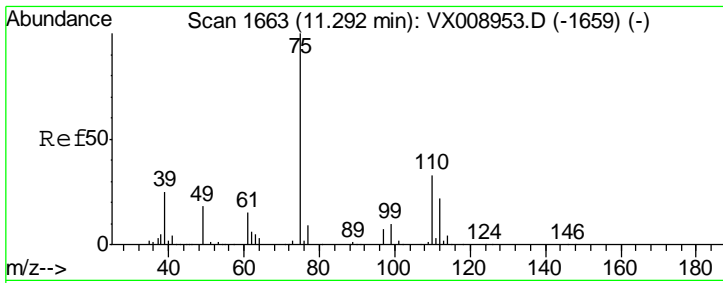
Tgt Ion	Resp	Lower	Upper
164	100		
166	106.5	105.0	157.4
129	102.9	74.2	111.4
131	77.7	72.2	108.2



#72
 1,4-Dichlorobenzene-d4
 Concen: 50.000 ug/l
 RT: 12.08 min Scan# 1792
 Delta R.T. -0.00 min
 Lab File: VX009052.D
 Acq: 18 Apr 2019 18:29

Tgt Ion	Resp	Lower	Upper
152	100		
115	59.6	41.4	124.2
150	158.0	0.0	349.8

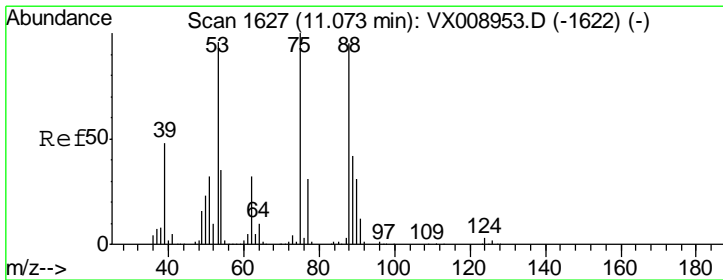
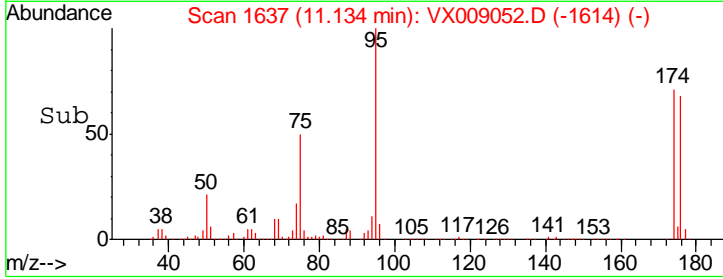
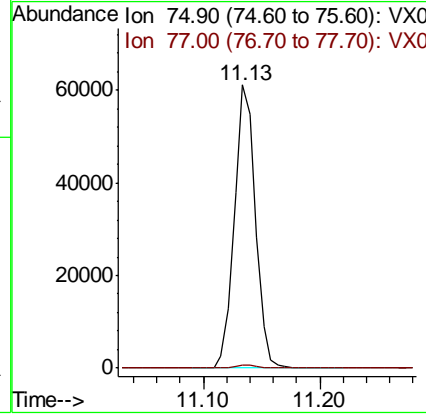
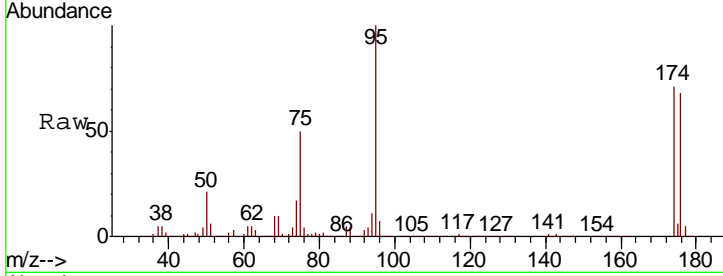




#76
 1,2,3-Trichloropropane
 Concen: 23.325 ug/l
 RT: 11.13 min Scan# 1637
 Delta R.T. -0.16 min
 Lab File: VX009052.D
 Acq: 18 Apr 2019 18:29

Instrument :
 MSVOA_X
 ClientSampled :
 PZ-02

Tgt Ion: 75 Resp: 77027
 Ion Ratio Lower Upper
 75 100
 77 1.4 22.7 68.0#



#81
 trans-1,4-Dichloro-2-butene
 Concen: 59.881 ug/l
 RT: 11.13 min Scan# 1637
 Delta R.T. 0.06 min
 Lab File: VX009052.D
 Acq: 18 Apr 2019 18:29

Tgt Ion: 75 Resp: 77027
 Ion Ratio Lower Upper
 75 100
 53 0.2 78.2 117.4#
 89 0.0 36.0 54.0#

