

Data Path : Z:\voasrv\HPCHEM1\MSVOA_X\Data\VX041823\
 Data File : VX035130.D
 Acq On : 18 Apr 2023 18:01
 Operator : JC/MD
 Sample : 02378-06
 Misc : 5.0mL/MSVOA_X/WATER
 ALS Vial : 20 Sample Multiplier: 1

Instrument :
 MSVOA_X
 ClientSampleId :
 COMJ9

Quant Time: Apr 19 00:56:16 2023
 Quant Method : Z:\voasrv\HPCHEM1\MSVOA_X\Method\SFAMXML041823WMA.M
 Quant Title : VOC Analysis
 QLast Update : Wed Apr 19 00:53:18 2023
 Response via : Initial Calibration

Compound	R.T.	QIon	Response	Conc	Units	Dev(Min)

Internal Standards						
1) 1,4-Difluorobenzene	6.763	114	498631	50.000	ug/L	0.00
28) Chlorobenzene-d5	10.055	117	435716	50.000	ug/L	0.00
58) 1,4-Dichlorobenzene-d4	12.018	152	198309	50.000	ug/L	0.00
System Monitoring Compounds						
4) Vinyl Chloride-d3	1.368	65	115167	35.820	ug/L	0.00
Spiked Amount	50.000	Range 60 - 135	Recovery =	71.640%		
7) Chloroethane-d5	1.673	69	86215	37.110	ug/L	0.00
Spiked Amount	50.000	Range 70 - 130	Recovery =	74.220%		
11) 1,1-Dichloroethene-d2	2.307	65	57729	37.525	ug/L	0.00
Spiked Amount	50.000	Range 60 - 125	Recovery =	75.060%		
21) 2-Butanone-d5	4.459	46	159578	74.479	ug/L	0.00
Spiked Amount	100.000	Range 40 - 130	Recovery =	74.480%		
24) Chloroform-d	5.056	84	225332	37.215	ug/L	0.00
Spiked Amount	50.000	Range 70 - 125	Recovery =	74.440%		
26) 1,2-Dichloroethane-d4	5.952	65	149440	38.434	ug/L	0.00
Spiked Amount	50.000	Range 70 - 125	Recovery =	76.860%		
32) Benzene-d6	5.971	84	489298	39.093	ug/L	0.00
Spiked Amount	50.000	Range 70 - 125	Recovery =	78.180%		
36) 1,2-Dichloropropane-d6	7.306	67	150683	39.411	ug/L	0.00
Spiked Amount	50.000	Range 70 - 120	Recovery =	78.820%		
41) Toluene-d8	8.647	98	436891	38.193	ug/L	0.00
Spiked Amount	50.000	Range 80 - 120	Recovery =	76.380%#		
43) trans-1,3-Dichloroprop...	8.952	79	52979	31.708	ug/L	0.00
Spiked Amount	50.000	Range 60 - 125	Recovery =	63.420%		
47) 2-Hexanone-d5	9.385	63	113632	74.011	ug/L	0.00
Spiked Amount	100.000	Range 45 - 130	Recovery =	74.010%		
56) 1,1,2,2-Tetrachloroeth...	11.189	84	178367	38.094	ug/L	0.00
Spiked Amount	50.000	Range 65 - 120	Recovery =	76.180%		
66) 1,2-Dichlorobenzene-d4	12.317	152	152525	39.689	ug/L	0.00
Spiked Amount	50.000	Range 80 - 120	Recovery =	79.380%#		

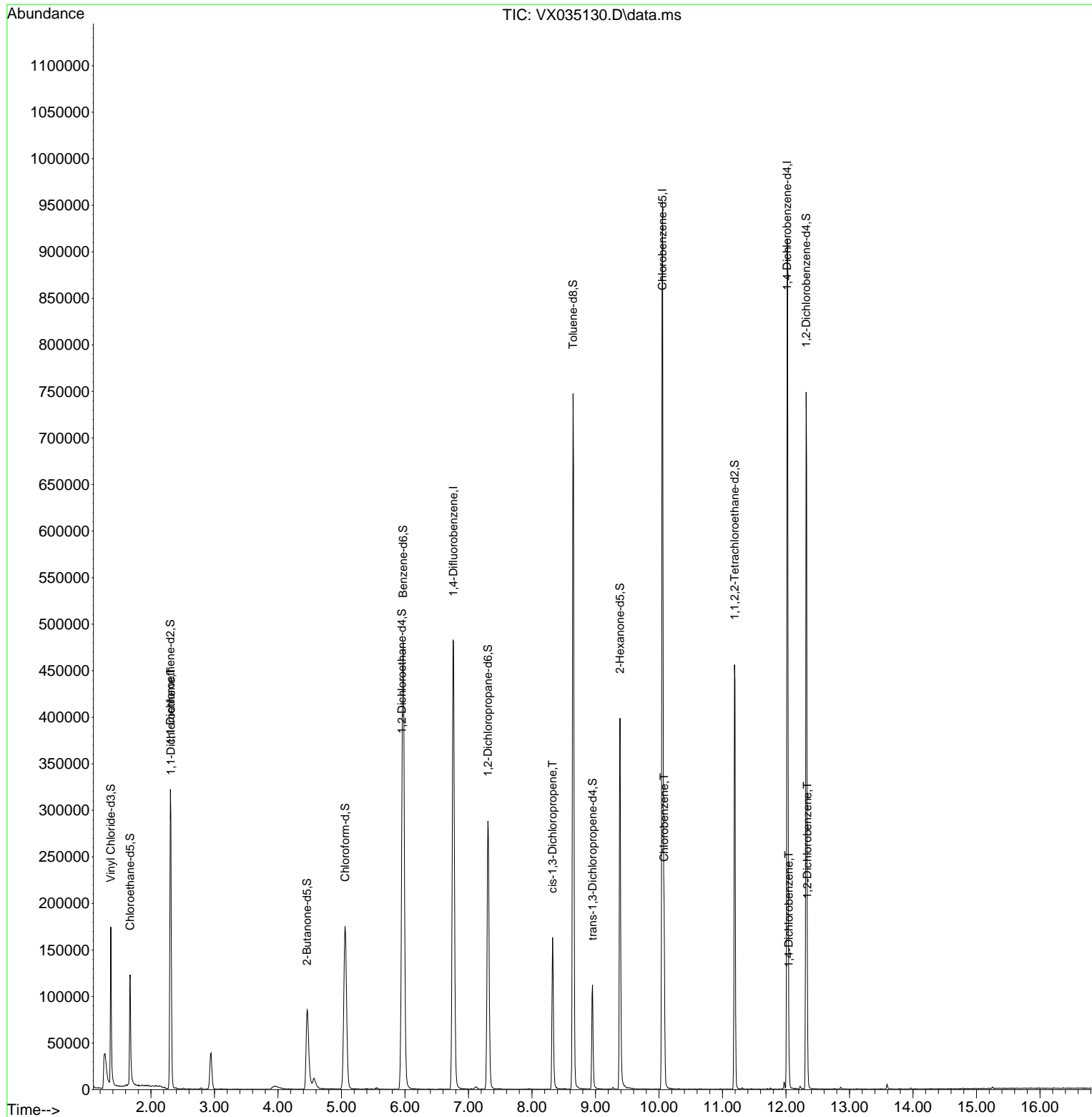
Target Compounds						Qvalue
12) 1,1-Dichloroethene	2.313	96	1407	0.472	ug/L #	1
39) cis-1,3-Dichloropropene	8.324	75	3713	0.715	ug/L #	66
51) Chlorobenzene	10.080	112	77605	8.604	ug/L	99
65) 1,4-Dichlorobenzene	12.043	146	12736	2.024	ug/L	98
67) 1,2-Dichlorobenzene	12.335	146	13543	2.172	ug/L	98

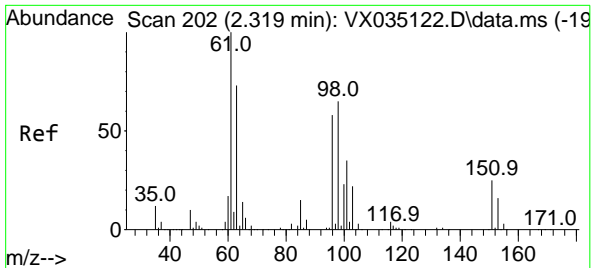
(#) = qualifier out of range (m) = manual integration (+) = signals summed

Data Path : Z:\voasrv\HPCHEM1\MSVOA_X\Data\VX041823\
Data File : VX035130.D
Acq On : 18 Apr 2023 18:01
Operator : JC/MD
Sample : 02378-06
Misc : 5.0mL/MSVOA_X/WATER
ALS Vial : 20 Sample Multiplier: 1

Instrument :
MSVOA_X
ClientSampleId :
COMJ9

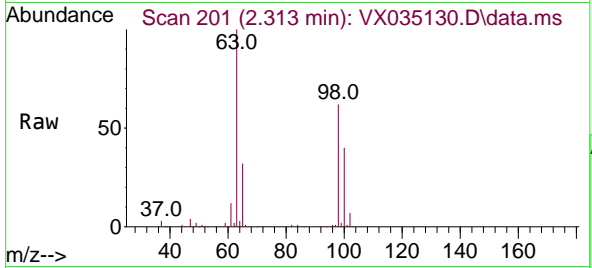
Quant Time: Apr 19 00:56:16 2023
Quant Method : Z:\voasrv\HPCHEM1\MSVOA_X\Method\SFAMXML041823WMA.M
Quant Title : VOC Analysis
QLast Update : Wed Apr 19 00:53:18 2023
Response via : Initial Calibration



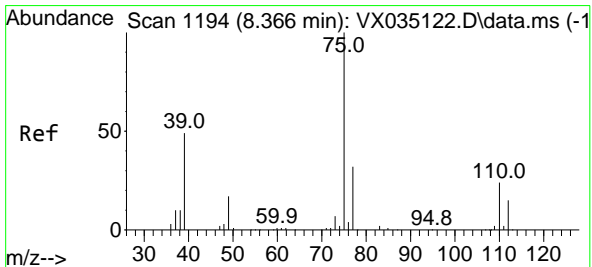
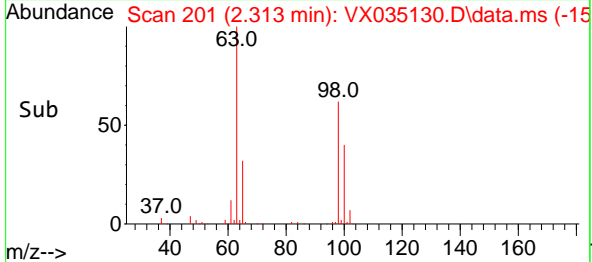
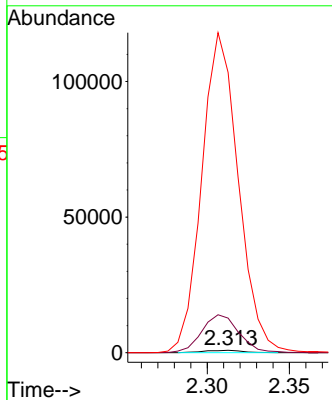


#12
 1,1-Dichloroethene
 Concen: 0.472 ug/L
 RT: 2.313 min Scan# 201
 Delta R.T. -0.006 min
 Lab File: VX035130.D
 Acq: 18 Apr 2023 18:01

Instrument :
 MSVOA_X
 ClientSampleId :
 COMJ9

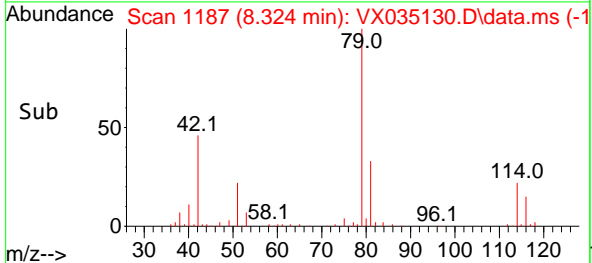
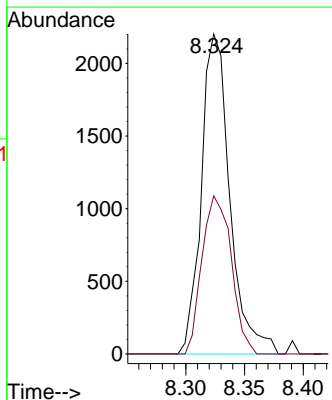
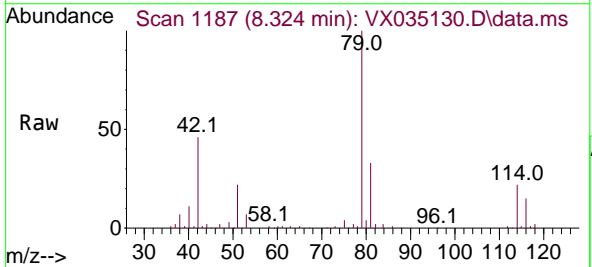


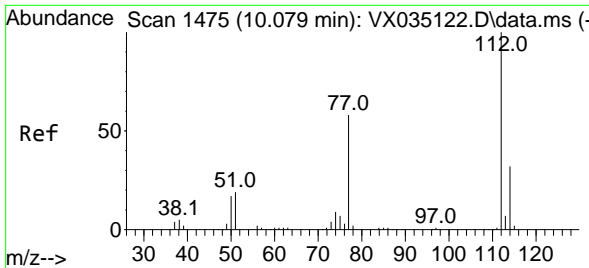
Tgt Ion: 96 Resp: 1407
 Ion Ratio Lower Upper
 96 100
 61 1443.4 119.0 221.0#
 63 11713.4 91.0 169.0#



#39
 cis-1,3-Dichloropropene
 Concen: 0.715 ug/L
 RT: 8.324 min Scan# 1187
 Delta R.T. -0.043 min
 Lab File: VX035130.D
 Acq: 18 Apr 2023 18:01

Tgt Ion: 75 Resp: 3713
 Ion Ratio Lower Upper
 75 100
 77 49.4 21.4 39.8#



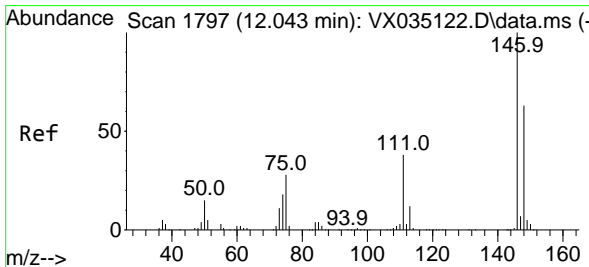
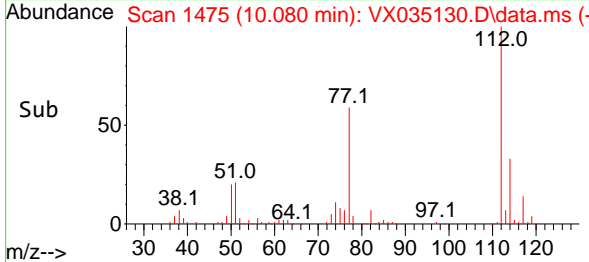
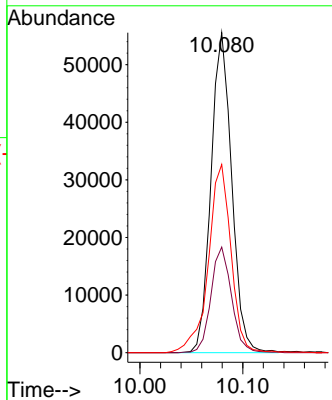
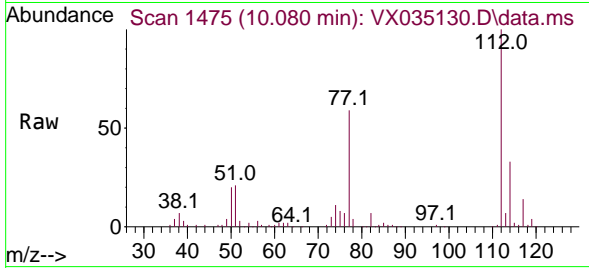


#51
 Chlorobenzene
 Concen: 8.604 ug/L
 RT: 10.080 min Scan# 1475
 Delta R.T. 0.000 min
 Lab File: VX035130.D
 Acq: 18 Apr 2023 18:01

Instrument : MSVOA_X
 ClientSampleId : COMJ9

Tgt Ion:112 Resp: 77605

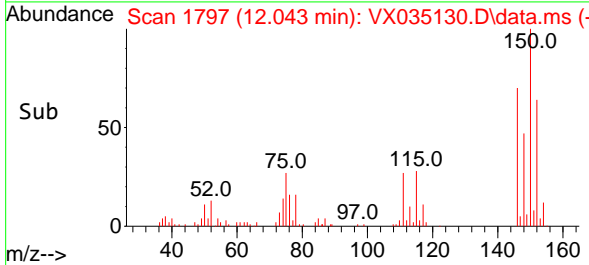
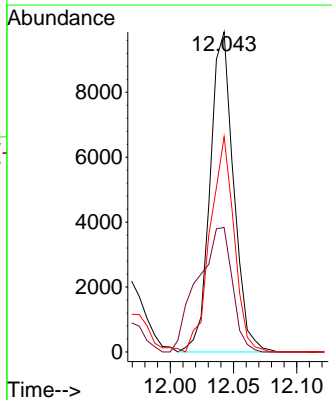
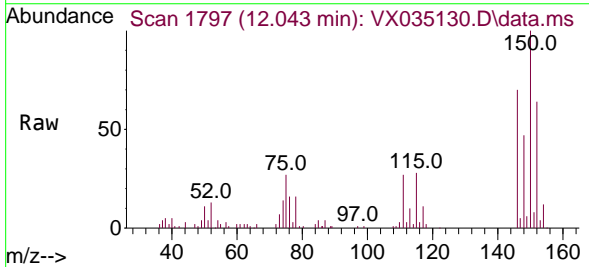
Ion	Ratio	Lower	Upper
112	100		
114	33.0	22.4	41.6
77	58.8	47.0	70.6

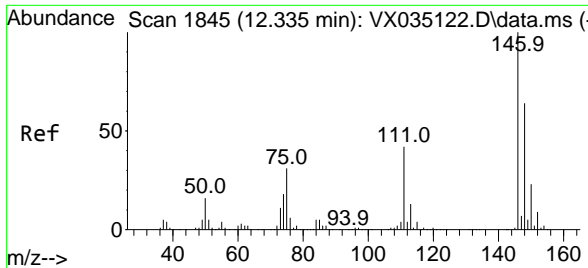


#65
 1,4-Dichlorobenzene
 Concen: 2.024 ug/L
 RT: 12.043 min Scan# 1797
 Delta R.T. 0.000 min
 Lab File: VX035130.D
 Acq: 18 Apr 2023 18:01

Tgt Ion:146 Resp: 12736

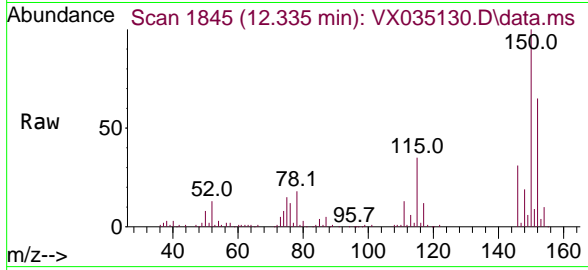
Ion	Ratio	Lower	Upper
146	100		
111	38.9	27.9	51.7
148	67.2	45.9	85.3





#67
 1,2-Dichlorobenzene
 Concen: 2.172 ug/L
 RT: 12.335 min Scan# 11
 Delta R.T. 0.000 min
 Lab File: VX035130.D
 Acq: 18 Apr 2023 18:01

Instrument : MSVOA_X
 ClientSampleId : COMJ9



Tgt Ion:146 Resp: 13543

Ion	Ratio	Lower	Upper
146	100		
111	42.1	34.7	52.1
148	63.4	52.1	78.1

