

Data Path : Z:\voasrv\HPCHEM1\MSVOA_X\Data\VX041823\
 Data File : VX035153.D
 Acq On : 19 Apr 2023 03:15
 Operator : JC/MD
 Sample : 02397-17
 Misc : 5.0mL/MSVOA_X/WATER
 ALS Vial : 52 Sample Multiplier: 1

Instrument :
 MSVOA_X
ClientSampleId :
 COMM9

Quant Time: Apr 19 03:38:56 2023
 Quant Method : Z:\voasrv\HPCHEM1\MSVOA_X\Method\SFAMXML041823WMA.M
 Quant Title : VOC Analysis
 QLast Update : Wed Apr 19 01:27:01 2023
 Response via : Initial Calibration

Manual Integrations
APPROVED
 Reviewed By :John Carlone 04/19/2023
 Supervised By :Mahesh Dadoda 04/19/2023

Compound	R.T.	QIon	Response	Conc	Units	Dev(Min)
Internal Standards						
1) 1,4-Difluorobenzene	6.763	114	489222	50.000	ug/L	0.00
28) Chlorobenzene-d5	10.055	117	430805	50.000	ug/L	0.00
58) 1,4-Dichlorobenzene-d4	12.024	152	206587	50.000	ug/L	0.00
System Monitoring Compounds						
4) Vinyl Chloride-d3	1.367	65	162443	51.496	ug/L	0.00
Spiked Amount	50.000	Range 60 - 135	Recovery	=	103.000%	
7) Chloroethane-d5	1.672	69	126674	55.573	ug/L	0.00
Spiked Amount	50.000	Range 70 - 130	Recovery	=	111.140%	
11) 1,1-Dichloroethene-d2	2.306	65	79070	52.386	ug/L	0.00
Spiked Amount	50.000	Range 60 - 125	Recovery	=	104.780%	
21) 2-Butanone-d5	4.458	46	225645	107.340	ug/L	0.00
Spiked Amount	100.000	Range 40 - 130	Recovery	=	107.340%	
24) Chloroform-d	5.056	84	315444	53.100	ug/L	0.00
Spiked Amount	50.000	Range 70 - 125	Recovery	=	106.200%	
26) 1,2-Dichloroethane-d4	5.952	65	209815	55.000	ug/L	0.00
Spiked Amount	50.000	Range 70 - 125	Recovery	=	110.000%	
32) Benzene-d6	5.976	84	682055	55.114	ug/L	0.00
Spiked Amount	50.000	Range 70 - 125	Recovery	=	110.220%	
36) 1,2-Dichloropropane-d6	7.305	67	209401	55.394	ug/L	0.00
Spiked Amount	50.000	Range 70 - 120	Recovery	=	110.780%	
41) Toluene-d8	8.647	98	620850	54.893	ug/L	0.00
Spiked Amount	50.000	Range 80 - 120	Recovery	=	109.780%	
43) trans-1,3-Dichloroprop...	8.951	79	82003	49.638	ug/L	0.00
Spiked Amount	50.000	Range 60 - 125	Recovery	=	99.280%	
47) 2-Hexanone-d5	9.384	63	165615	109.098	ug/L	0.00
Spiked Amount	100.000	Range 45 - 130	Recovery	=	109.100%	
56) 1,1,2,2-Tetrachloroeth...	11.189	84	250531	54.116	ug/L	0.00
Spiked Amount	50.000	Range 65 - 120	Recovery	=	108.240%	
66) 1,2-Dichlorobenzene-d4	12.323	152	225488m	56.324	ug/L	0.00
Spiked Amount	50.000	Range 80 - 120	Recovery	=	112.640%	
Target Compounds						
51) Chlorobenzene	10.079	112	2298860	257.791	ug/L	98
64) 1,3-Dichlorobenzene	11.969	146	173699	27.112	ug/L	99
65) 1,4-Dichlorobenzene	12.042	146	651251	99.341	ug/L	99
67) 1,2-Dichlorobenzene	12.335	146	5411085	832.977	ug/L	94
70) 1,2,4-trichlorobenzene	13.585	180	778526	209.922	ug/L	99
72) 1,2,3-Trichlorobenzene	13.963	180	124588	34.029	ug/L	99

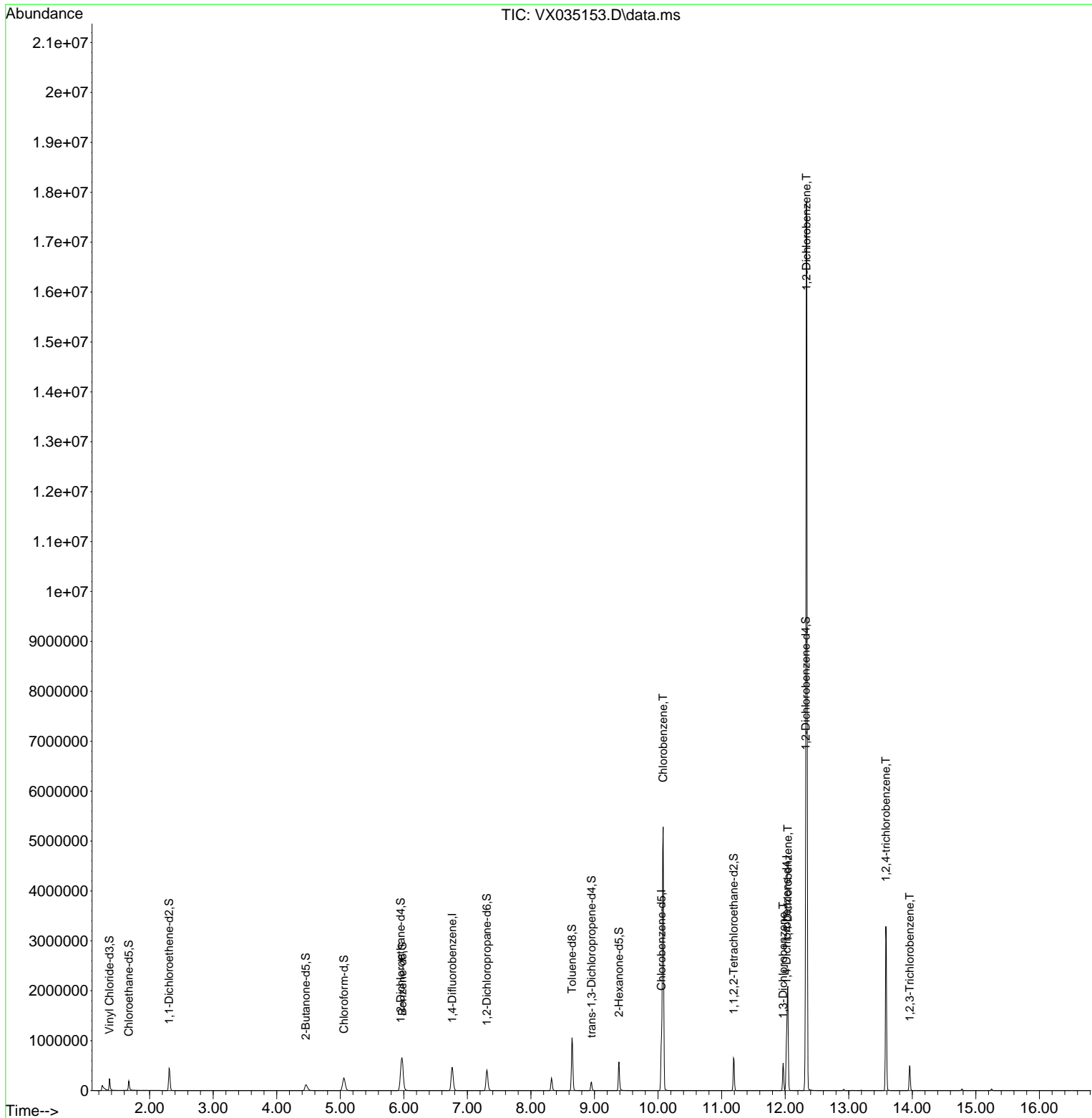
(#) = qualifier out of range (m) = manual integration (+) = signals summed

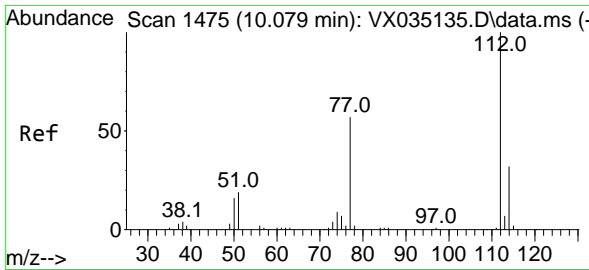
Data Path : Z:\voasrv\HPCHEM1\MSVOA_X\Data\VX041823\
 Data File : VX035153.D
 Acq On : 19 Apr 2023 03:15
 Operator : JC/MD
 Sample : 02397-17
 Misc : 5.0mL/MSVOA_X/WATER
 ALS Vial : 52 Sample Multiplier: 1

Instrument :
 MSVOA_X
ClientSampleId :
 COMM9

Quant Time: Apr 19 03:38:56 2023
 Quant Method : Z:\voasrv\HPCHEM1\MSVOA_X\Method\SFAMXML041823WMA.M
 Quant Title : VOC Analysis
 QLast Update : Wed Apr 19 01:27:01 2023
 Response via : Initial Calibration

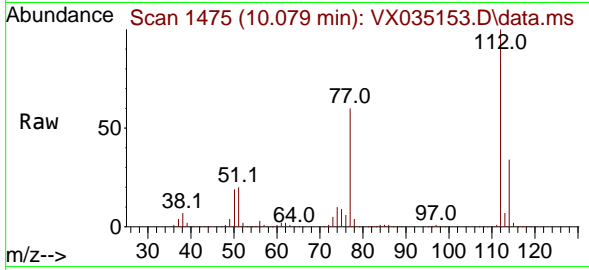
Manual Integrations
APPROVED
 Reviewed By :John Carlone 04/19/2023
 Supervised By :Mahesh Dadoda 04/19/2023





#51
 Chlorobenzene
 Concen: 257.791 ug/L
 RT: 10.079 min Scan# 1475
 Delta R.T. -0.000 min
 Lab File: VX035153.D
 Acq: 19 Apr 2023 03:15

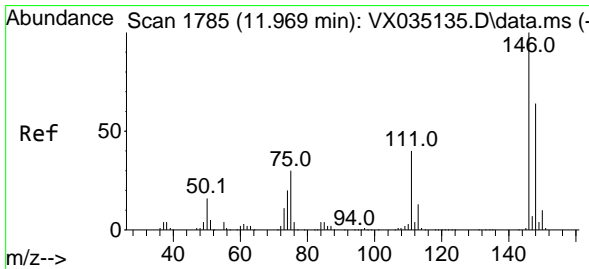
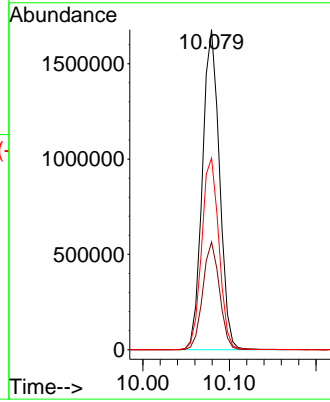
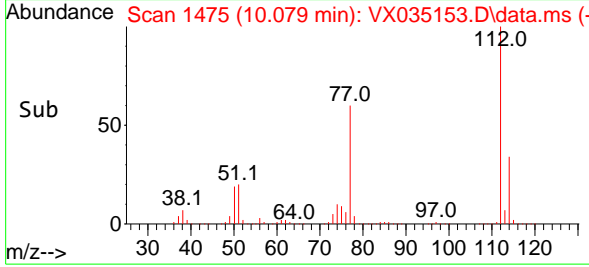
Instrument : MSVOA_X
 ClientSampleId : COMM9



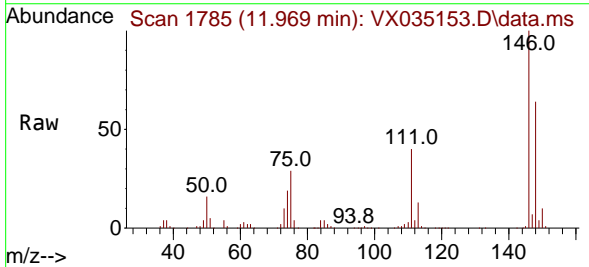
Tgt Ion:112 Resp: 2298860
 Ion Ratio Lower Upper
 112 100
 114 33.7 22.4 41.6
 77 59.8 47.0 70.6

Manual Integrations
 APPROVED

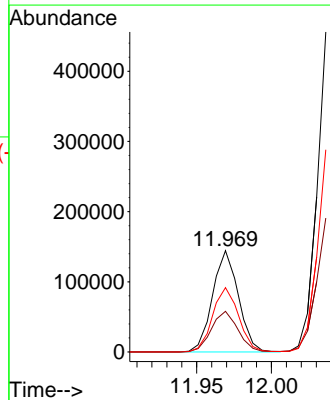
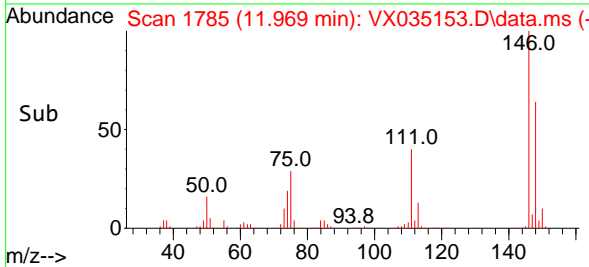
Reviewed By :John Carlone 04/19/2023
 Supervised By :Mahesh Dadoda 04/19/2023

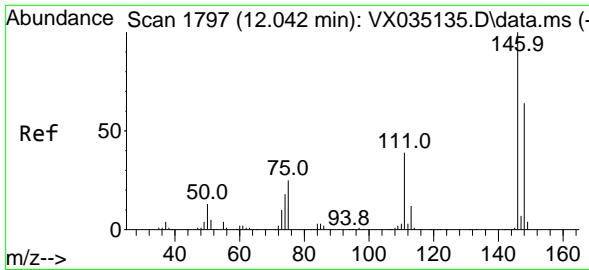


#64
 1,3-Dichlorobenzene
 Concen: 27.112 ug/L
 RT: 11.969 min Scan# 1785
 Delta R.T. -0.000 min
 Lab File: VX035153.D
 Acq: 19 Apr 2023 03:15



Tgt Ion:146 Resp: 173699
 Ion Ratio Lower Upper
 146 100
 111 40.1 28.9 53.7
 148 63.5 44.3 82.3





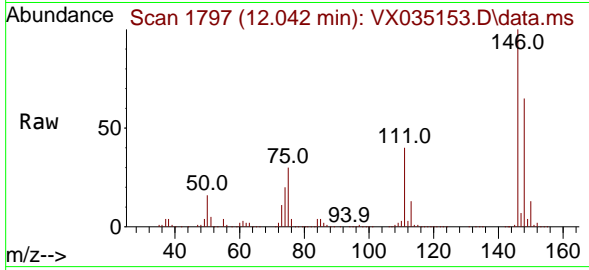
#65
 1,4-Dichlorobenzene
 Concen: 99.341 ug/L
 RT: 12.042 min Scan# 1797
 Delta R.T. -0.000 min
 Lab File: VX035153.D
 Acq: 19 Apr 2023 03:15

Instrument :

MSVOA_X

ClientSampleId :

COMM9



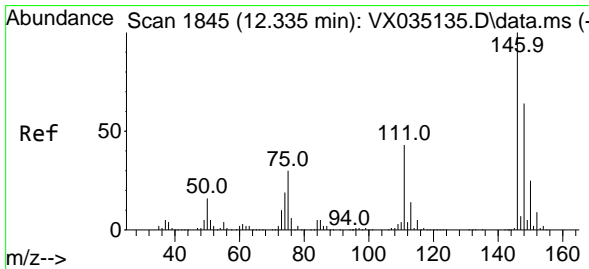
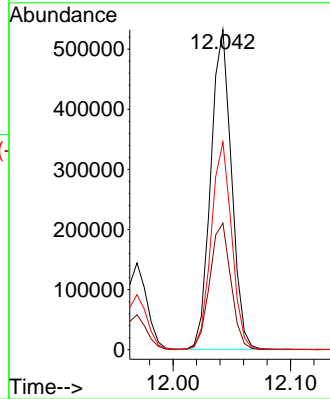
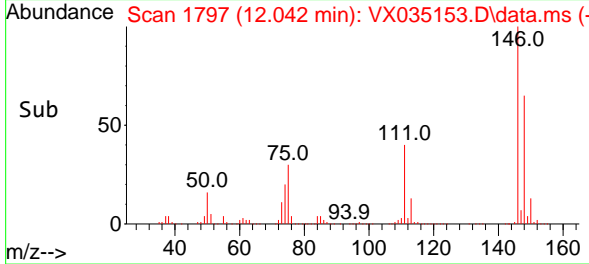
Tgt Ion:146 Resp: 65125
 Ion Ratio Lower Upper
 146 100
 111 39.6 27.9 51.7
 148 64.9 45.9 85.3

Manual Integrations

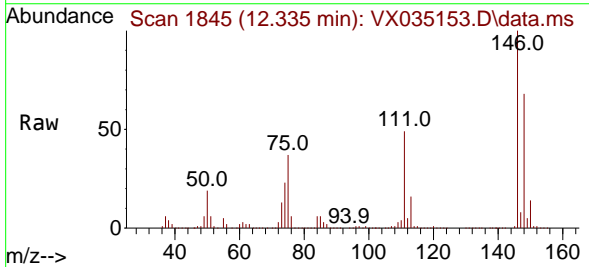
APPROVED

Reviewed By :John Carlone 04/19/2023

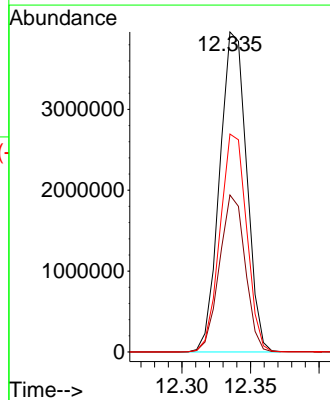
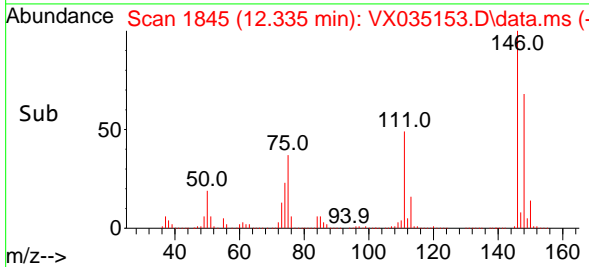
Supervised By :Mahesh Dadoda 04/19/2023

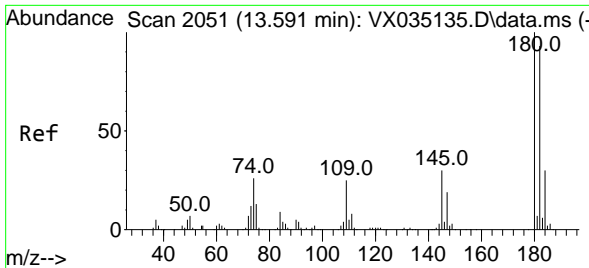


#67
 1,2-Dichlorobenzene
 Concen: 832.977 ug/L
 RT: 12.335 min Scan# 1845
 Delta R.T. -0.000 min
 Lab File: VX035153.D
 Acq: 19 Apr 2023 03:15



Tgt Ion:146 Resp: 5411085
 Ion Ratio Lower Upper
 146 100
 111 49.1 34.7 52.1
 148 68.1 52.1 78.1





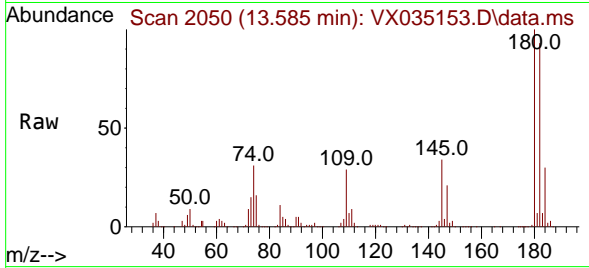
#70
 1,2,4-trichlorobenzene
 Concen: 209.922 ug/L
 RT: 13.585 min Scan# 2050
 Delta R.T. -0.006 min
 Lab File: VX035153.D
 Acq: 19 Apr 2023 03:15

Instrument :

MSVOA_X

ClientSampleId :

COMM9

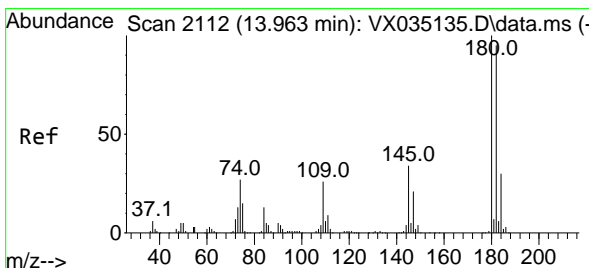
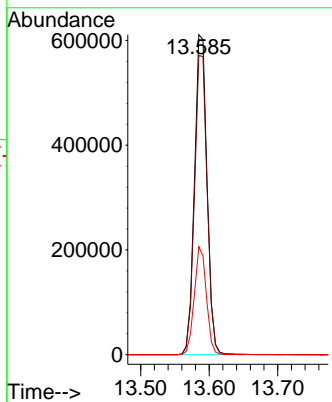
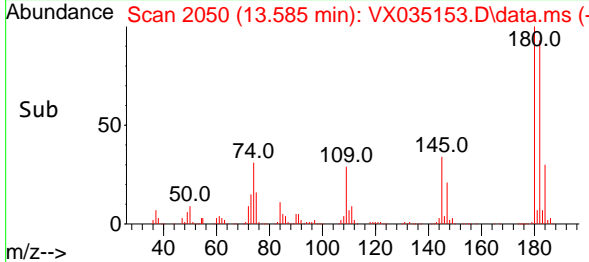


Tgt Ion:180 Resp: 778520
 Ion Ratio Lower Upper
 180 100
 182 94.4 76.6 114.8
 145 32.5 26.2 39.4

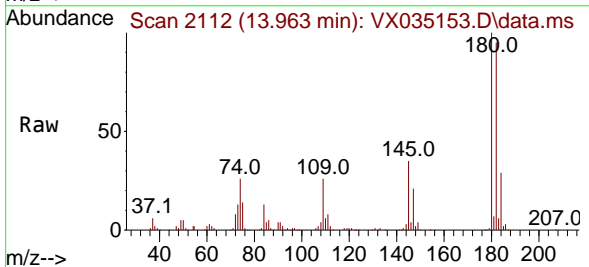
Manual Integrations

APPROVED

Reviewed By :John Carlone 04/19/2023
 Supervised By :Mahesh Dadoda 04/19/2023



#72
 1,2,3-Trichlorobenzene
 Concen: 34.029 ug/L
 RT: 13.963 min Scan# 2112
 Delta R.T. -0.000 min
 Lab File: VX035153.D
 Acq: 19 Apr 2023 03:15



Tgt Ion:180 Resp: 124588
 Ion Ratio Lower Upper
 180 100
 182 94.8 75.0 112.6
 145 34.1 27.1 40.7

