

Data Path : Z:\voasrv\HPCHEM1\MSVOA_X\Data\VX041922\
 Data File : VX028163.D
 Acq On : 19 Apr 2022 16:29
 Operator : JC/MD
 Sample : N2452-11ME
 Misc : 4.49g/5mL/100uL/5.00mL/MSVOA_X/MEOH
 ALS Vial : 17 Sample Multiplier: 1

Instrument :
 MSVOA_X
 ClientSampleId :
 WC-15-1-5-GRME

Quant Time: Apr 20 08:16:15 2022
 Quant Method : Z:\voasrv\HPCHEM1\MSVOA_X\Method\82X041922W.M
 Quant Title : SW846 8260
 QLast Update : Tue Apr 19 13:38:04 2022
 Response via : Initial Calibration

| Compound | R.T. | QIon | Response | Conc | Units | Dev(Min) |
|-----------------------------|--------|----------------|----------|-----------|----------|----------|
| Internal Standards | | | | | | |
| 1) Pentafluorobenzene | 5.550 | 168 | 517459 | 50.000 | ug/l | 0.00 |
| 34) 1,4-Difluorobenzene | 6.763 | 114 | 825070 | 50.000 | ug/l | 0.00 |
| 63) Chlorobenzene-d5 | 10.061 | 117 | 814931 | 50.000 | ug/l | 0.00 |
| 72) 1,4-Dichlorobenzene-d4 | 12.030 | 152 | 466412 | 50.000 | ug/l | 0.00 |
| System Monitoring Compounds | | | | | | |
| 33) 1,2-Dichloroethane-d4 | 5.958 | 65 | 270107 | 40.033 | ug/l | 0.00 |
| Spiked Amount | 50.000 | Range 61 - 141 | Recovery | = | 80.060% | |
| 35) Dibromofluoromethane | 5.391 | 113 | 259970 | 44.930 | ug/l | 0.00 |
| Spiked Amount | 50.000 | Range 69 - 133 | Recovery | = | 89.860% | |
| 50) Toluene-d8 | 8.653 | 98 | 994412 | 44.746 | ug/l | 0.00 |
| Spiked Amount | 50.000 | Range 65 - 126 | Recovery | = | 89.500% | |
| 62) 4-Bromofluorobenzene | 11.085 | 95 | 455483 | 53.603 | ug/l | 0.00 |
| Spiked Amount | 50.000 | Range 58 - 135 | Recovery | = | 107.200% | |
| Target Compounds | | | | | | |
| | | | | | | Qvalue |
| 3) Chloromethane | 1.294 | 50 | 762 | Below Cal | | 96 |
| 5) Bromomethane | 1.599 | 94 | 2084 | Below Cal | | 91 |
| 6) Chloroethane | 1.672 | 64 | 488 | Below Cal | # | 43 |
| 8) Diethyl Ether | 2.148 | 74 | 98 | Below Cal | # | 7 |
| 10) Methyl Iodide | 2.434 | 142 | 2253 | 5.586 | ug/l | 98 |
| 11) Tert butyl alcohol | 2.953 | 59 | 11234 | Below Cal | # | 72 |
| 13) Acrolein | 2.245 | 56 | 190 | 0.230 | ug/l # | 15 |
| 14) Allyl chloride | 2.794 | 41 | 85712 | 12.845 | ug/l # | 65 |
| 15) Acrylonitrile | 3.074 | 53 | 6440 | 2.342 | ug/l # | 39 |
| 16) Acetone | 2.422 | 43 | 20609 | 8.653 | ug/l | 94 |
| 18) Methyl Acetate | 2.745 | 43 | 36231 | 6.040 | ug/l # | 69 |
| 20) Methylene Chloride | 2.782 | 84 | 2853 | 0.570 | ug/l # | 20 |
| 25) 2-Butanone | 4.599 | 43 | 15087 | 3.776 | ug/l # | 87 |
| 26) 2,2-Dichloropropane | 4.288 | 77 | 2932 | 0.335 | ug/l # | 52 |
| 30) Chloroform | 5.159 | 83 | 3704 | 0.344 | ug/l # | 58 |
| 31) Cyclohexane | 5.458 | 56 | 371461 | 45.189 | ug/l | 93 |
| 36) 1,1-Dichloropropene | 5.544 | 75 | 34334 | 4.549 | ug/l # | 50 |
| 37) Ethyl Acetate | 4.599 | 43 | 15087 | 1.970 | ug/l # | 66 |
| 38) Carbon Tetrachloride | 5.550 | 117 | 49293 | 5.785 | ug/l # | 16 |
| 39) Methylcyclohexane | 7.379 | 83 | 2123326 | 222.966 | ug/l | 96 |
| 40) Benzene | 6.037 | 78 | 26169 | 1.184 | ug/l | 99 |
| 43) Isopropyl Acetate | 6.348 | 43 | 41116 | 3.299 | ug/l # | 59 |
| 45) 1,2-Dichloropropane | 7.372 | 63 | 18917 | 3.498 | ug/l # | 1 |
| 47) Bromodichloromethane | 7.775 | 83 | 29913 | 3.669 | ug/l # | 90 |
| 48) Methyl methacrylate | 7.653 | 41 | 111680 | 19.516 | ug/l # | 50 |
| 51) 4-Methyl-2-Pentanone | 8.598 | 43 | 126402 | 15.804 | ug/l # | 37 |
| 52) Toluene | 8.720 | 92 | 52916 | 3.448 | ug/l | 94 |
| 55) 1,1,2-Trichloroethane | 9.104 | 97 | 478894 | 76.790 | ug/l # | 20 |
| 56) Ethyl methacrylate | 9.098 | 69 | 96874 | 10.716 | ug/l # | 1 |
| 59) 2-Hexanone | 9.384 | 43 | 726377 | 117.241 | ug/l # | 23 |
| 60) Dibromochloromethane | 9.500 | 129 | 3283 | 0.483 | ug/l # | 1 |
| 67) Ethyl Benzene | 10.195 | 91 | 384868 | 13.210 | ug/l | 96 |
| 68) m/p-Xylenes | 10.305 | 106 | 725969 | 61.224 | ug/l | 95 |
| 69) o-Xylene | 10.646 | 106 | 1461309 | 123.606 | ug/l | 90 |
| 70) Styrene | 10.646 | 104 | 70034 | 3.657 | ug/l # | 1 |
| 71) Bromoform | 10.793 | 173 | 131 | 3.596 | ug/l # | 29 |

Data Path : Z:\voasrv\HPCHEM1\MSVOA_X\Data\VX041922\
 Data File : VX028163.D
 Acq On : 19 Apr 2022 16:29
 Operator : JC/MD
 Sample : N2452-11ME
 Misc : 4.49g/5mL/100uL/5.00mL/MSVOA_X/MEOH
 ALS Vial : 17 Sample Multiplier: 1

Instrument :
 MSVOA_X
 ClientSampleId :
 WC-15-1-5-GRME

Quant Time: Apr 20 08:16:15 2022
 Quant Method : Z:\voasrv\HPCHEM1\MSVOA_X\Method\82X041922W.M
 Quant Title : SW846 8260
 QLast Update : Tue Apr 19 13:38:04 2022
 Response via : Initial Calibration

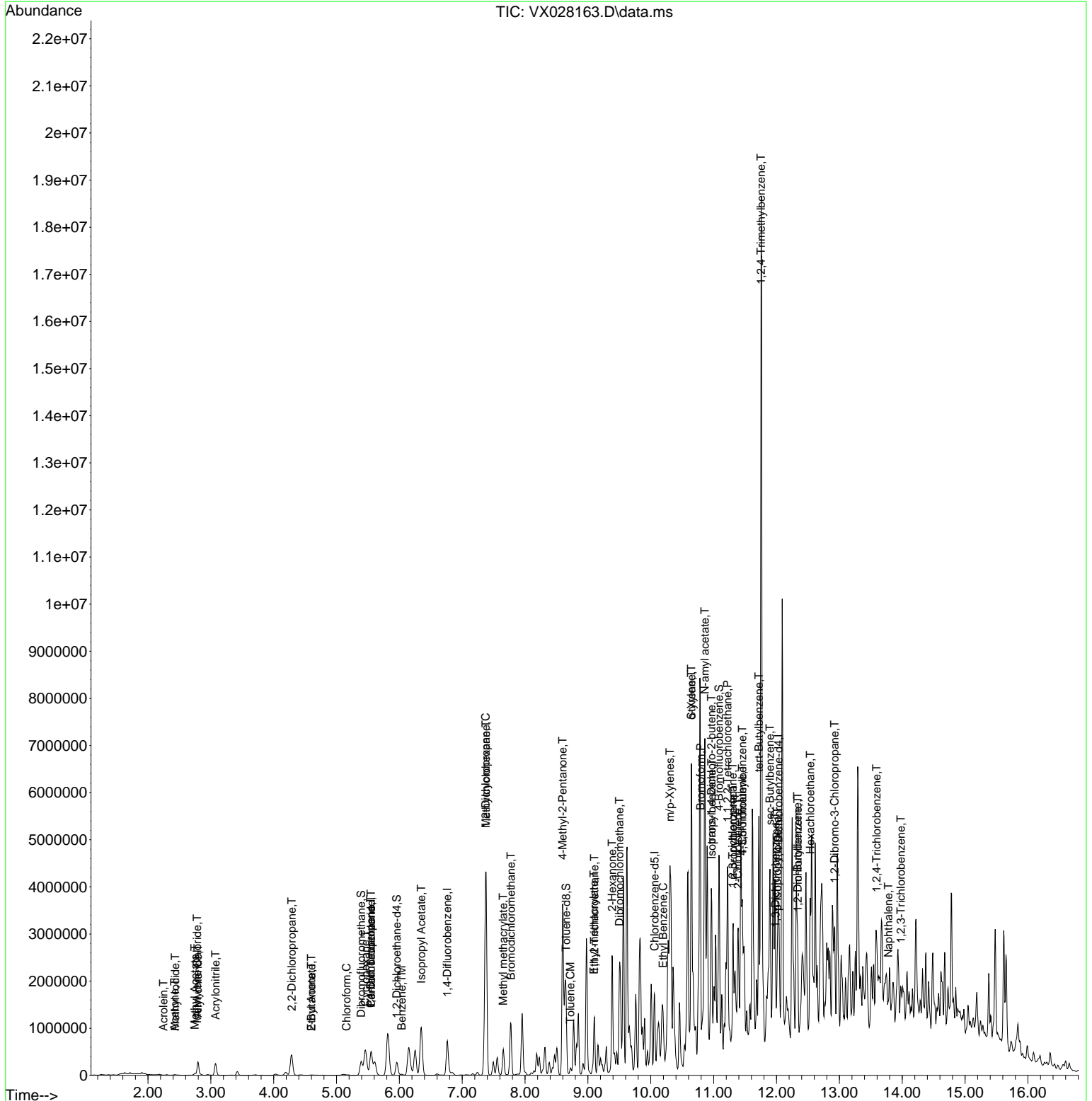
| Compound | R.T. | QIon | Response | Conc | Units | Dev(Min) |
|-------------------------------|--------|------|----------|---------|--------|----------|
| 73) Isopropylbenzene | 10.969 | 105 | 1608878 | 50.186 | ug/l | 96 |
| 74) N-amyl acetate | 10.860 | 43 | 359019 | 32.401 | ug/l # | 1 |
| 75) 1,1,2,2-Tetrachloroethane | 11.219 | 83 | 290765 | 27.950 | ug/l # | 31 |
| 76) 1,2,3-Trichloropropane | 11.305 | 75 | 9937 | 1.083 | ug/l # | 1 |
| 78) n-propylbenzene | 11.311 | 91 | 1655558 | 46.572 | ug/l | 95 |
| 79) 2-Chlorotoluene | 11.384 | 91 | 94221 | 4.263 | ug/l # | 54 |
| 80) 1,3,5-Trimethylbenzene | 11.457 | 105 | 967783 | 35.564 | ug/l | 94 |
| 81) trans-1,4-Dichloro-2-b... | 10.963 | 75 | 17550 | 5.682 | ug/l # | 1 |
| 82) 4-Chlorotoluene | 11.457 | 91 | 114599 | 4.501 | ug/l # | 49 |
| 83) tert-Butylbenzene | 11.719 | 119 | 152938 | 5.504 | ug/l | 94 |
| 84) 1,2,4-Trimethylbenzene | 11.756 | 105 | 7233311 | 267.398 | ug/l | 87 |
| 85) sec-Butylbenzene | 11.896 | 105 | 801712 | 23.914 | ug/l # | 70 |
| 86) p-Isopropyltoluene | 12.012 | 119 | 525023 | 18.153 | ug/l | 97 |
| 87) 1,3-Dichlorobenzene | 11.988 | 146 | 8504 | 0.542 | ug/l # | 37 |
| 89) n-Butylbenzene | 12.335 | 91 | 626010 | 26.360 | ug/l # | 75 |
| 90) Hexachloroethane | 12.536 | 117 | 120164 | 24.067 | ug/l # | 10 |
| 91) 1,2-Dichlorobenzene | 12.341 | 146 | 30208 | 1.938 | ug/l # | 74 |
| 92) 1,2-Dibromo-3-Chloropr... | 12.926 | 75 | 4023 | 1.739 | ug/l # | 13 |
| 93) 1,2,4-Trichlorobenzene | 13.591 | 180 | 2132 | 0.230 | ug/l # | 1 |
| 95) Naphthalene | 13.780 | 128 | 387562 | 12.551 | ug/l # | 82 |
| 96) 1,2,3-Trichlorobenzene | 13.981 | 180 | 8610 | 0.946 | ug/l # | 1 |

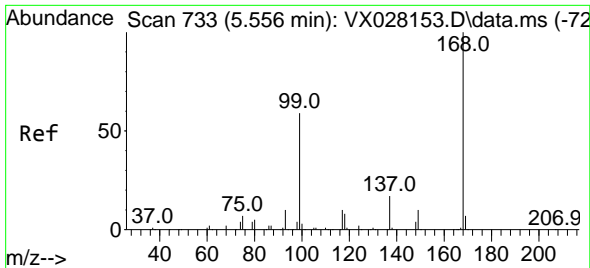
(#) = qualifier out of range (m) = manual integration (+) = signals summed

Data Path : Z:\voasrv\HPCHEM1\MSVOA_X\Data\VX041922\
 Data File : VX028163.D
 Acq On : 19 Apr 2022 16:29
 Operator : JC/MD
 Sample : N2452-11ME
 Misc : 4.49g/5mL/100uL/5.00mL/MSVOA_X/MEOH
 ALS Vial : 17 Sample Multiplier: 1

Instrument :
 MSVOA_X
Client Sample Id :
 WC-15-1-5-GRME

Quant Time: Apr 20 08:16:15 2022
 Quant Method : Z:\voasrv\HPCHEM1\MSVOA_X\Method\82X041922W.M
 Quant Title : SW846 8260
 QLast Update : Tue Apr 19 13:38:04 2022
 Response via : Initial Calibration

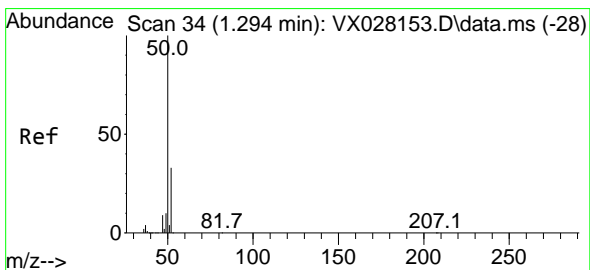
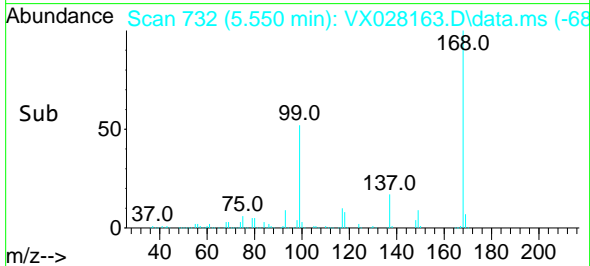
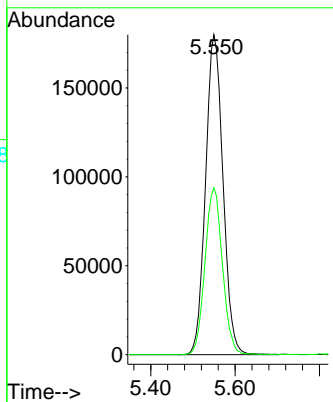
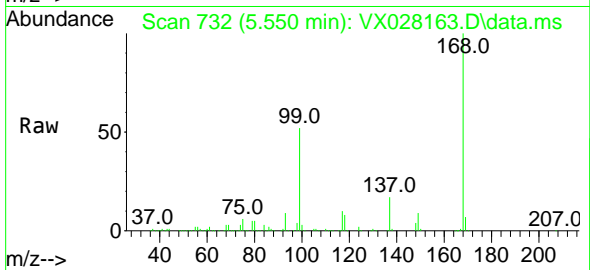




#1
 Pentafluorobenzene
 Concen: 50.000 ug/l
 RT: 5.550 min Scan# 71
 Delta R.T. -0.006 min
 Lab File: VX028163.D
 Acq: 19 Apr 2022 16:29

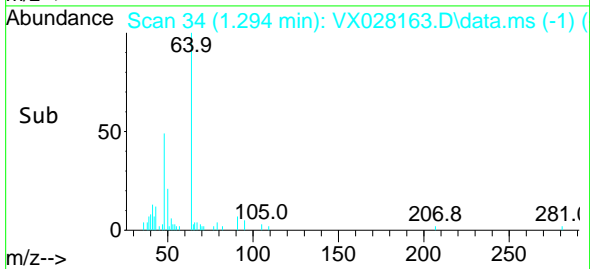
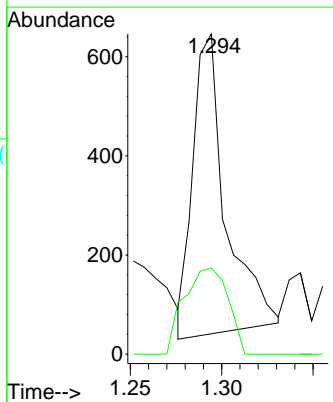
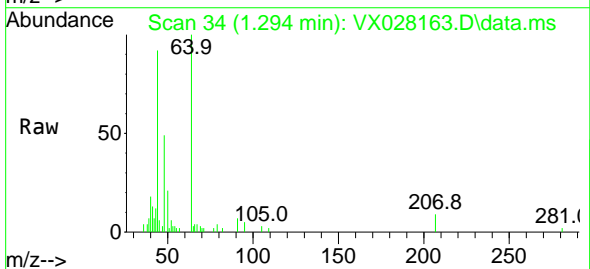
Instrument :
 MSVOA_X
 ClientSampleId :
 WC-15-1-5-GRME

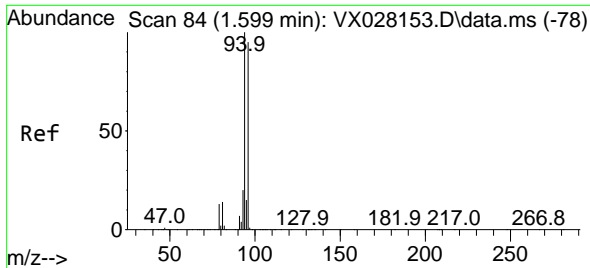
Tgt Ion:168 Resp: 517459
 Ion Ratio Lower Upper
 168 100
 99 52.2 41.7 62.5



#3
 Chloromethane
 Concen: Below Cal
 RT: 1.294 min Scan# 34
 Delta R.T. 0.000 min
 Lab File: VX028163.D
 Acq: 19 Apr 2022 16:29

Tgt Ion: 50 Resp: 762
 Ion Ratio Lower Upper
 50 100
 52 30.5 26.4 39.6

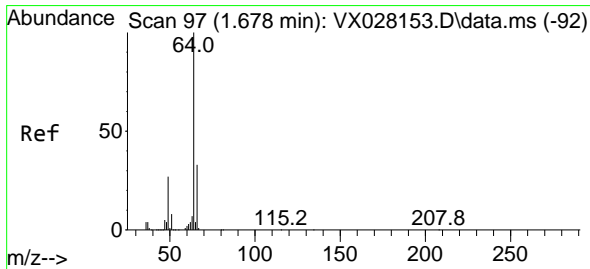
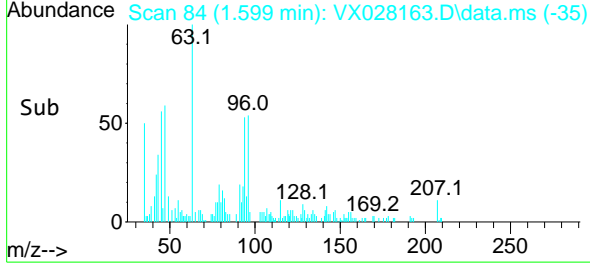
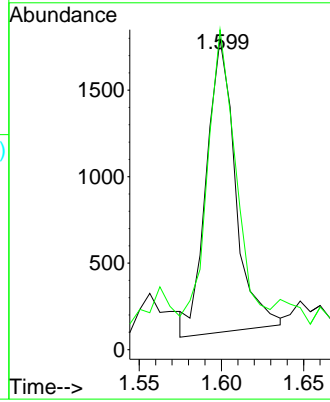
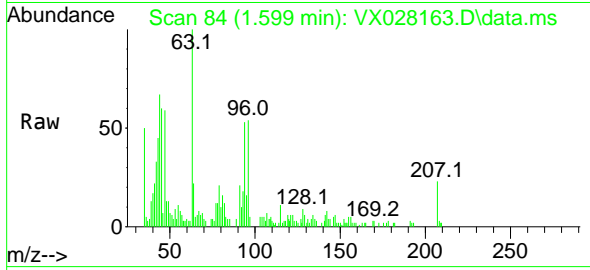




#5
 Bromomethane
 Concen: Below Cal
 RT: 1.599 min Scan# 84
 Delta R.T. 0.000 min
 Lab File: VX028163.D
 Acq: 19 Apr 2022 16:29

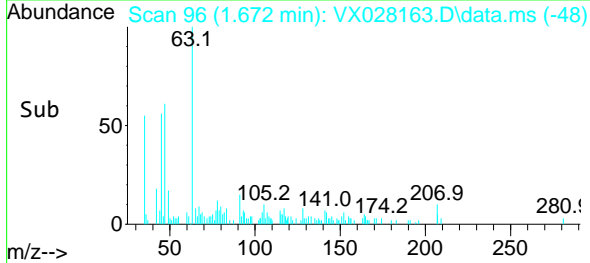
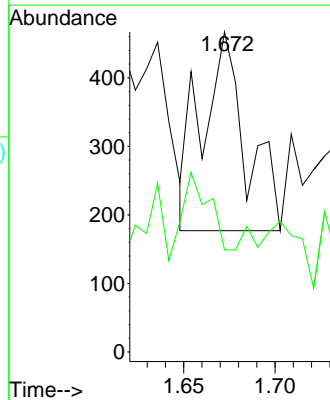
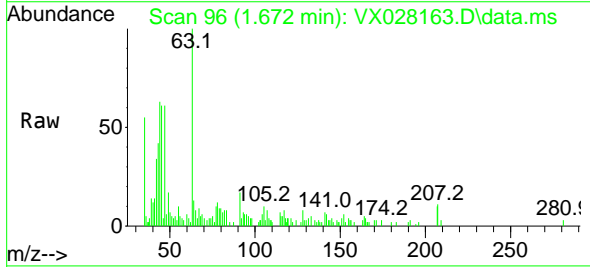
Instrument : MSVOA_X
 ClientSampleId : WC-15-1-5-GRME

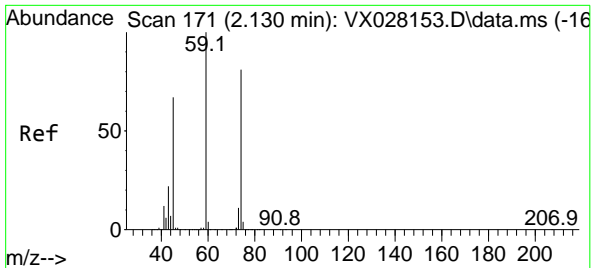
Tgt Ion: 94 Resp: 2084
 Ion Ratio Lower Upper
 94 100
 96 102.7 75.3 112.9



#6
 Chloroethane
 Concen: Below Cal
 RT: 1.672 min Scan# 96
 Delta R.T. -0.006 min
 Lab File: VX028163.D
 Acq: 19 Apr 2022 16:29

Tgt Ion: 64 Resp: 488
 Ion Ratio Lower Upper
 64 100
 66 0.0 25.3 37.9#

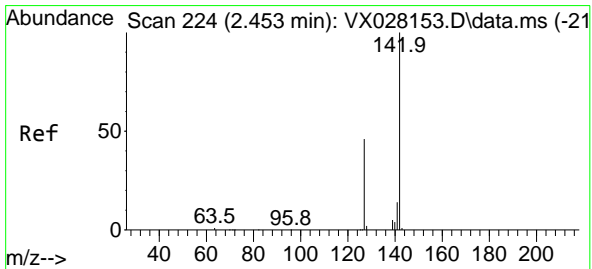
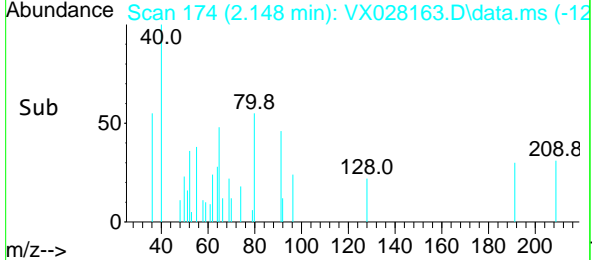
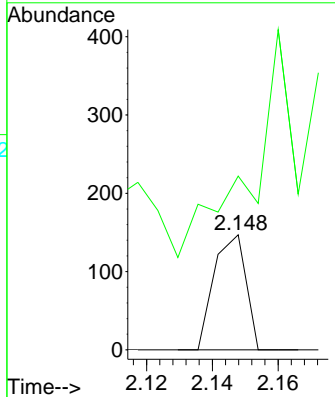
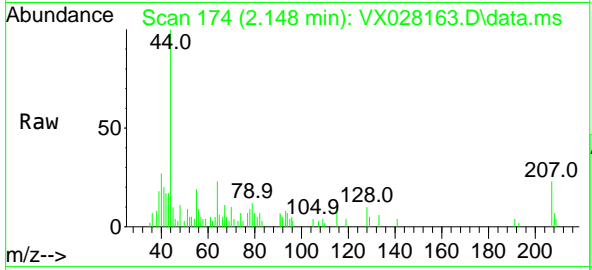




#8
 Diethyl Ether
 Concen: Below Cal
 RT: 2.148 min Scan# 11
 Delta R.T. 0.018 min
 Lab File: VX028163.D
 Acq: 19 Apr 2022 16:29

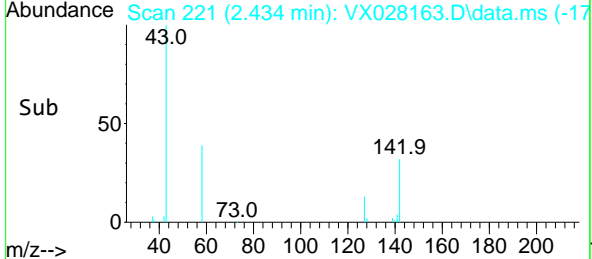
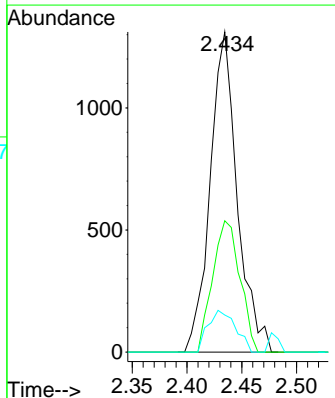
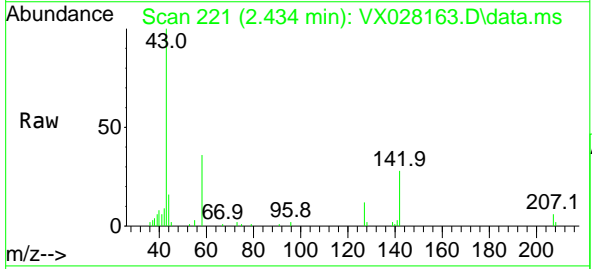
Instrument : MSVOA_X
 ClientSampleId : WC-15-1-5-GRME

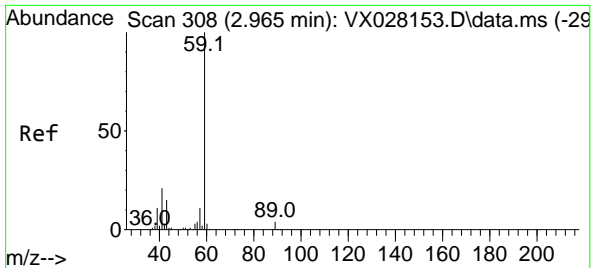
Tgt Ion: 74 Resp: 98
 Ion Ratio Lower Upper
 74 100
 45 0.0 42.0 126.0#



#10
 Methyl Iodide
 Concen: 5.586 ug/l
 RT: 2.434 min Scan# 221
 Delta R.T. -0.019 min
 Lab File: VX028163.D
 Acq: 19 Apr 2022 16:29

Tgt Ion:142 Resp: 2253
 Ion Ratio Lower Upper
 142 100
 127 41.2 33.9 50.9
 141 13.3 11.4 17.2

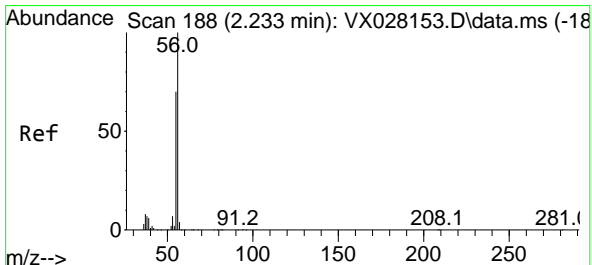
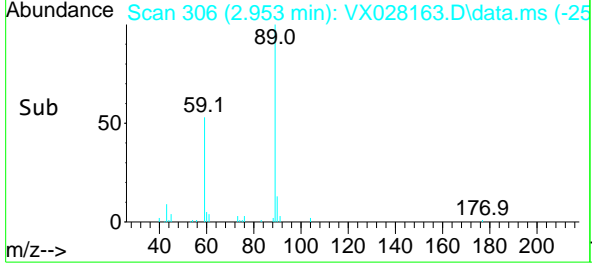
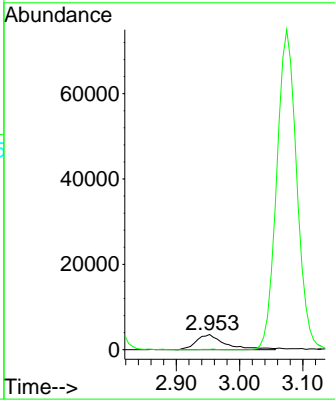
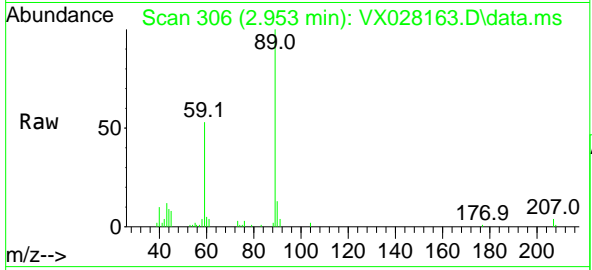




#11
 Tert butyl alcohol
 Concen: Below Cal
 RT: 2.953 min Scan# 30
 Delta R.T. -0.012 min
 Lab File: VX028163.D
 Acq: 19 Apr 2022 16:29

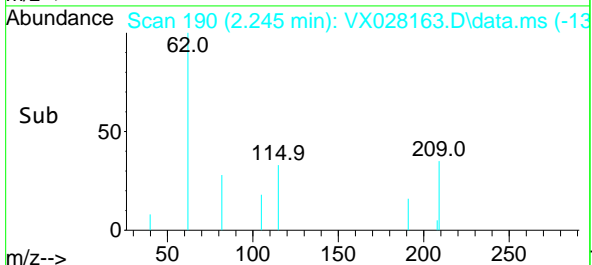
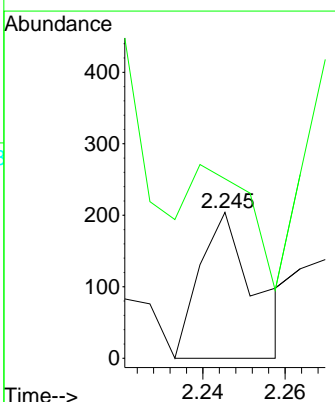
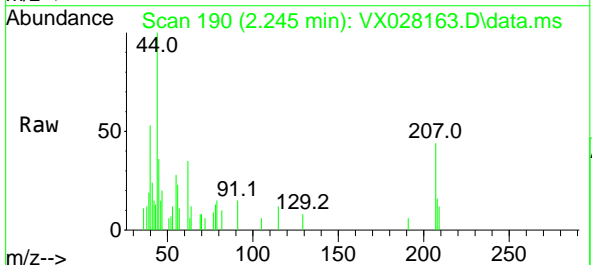
Instrument : MSVOA_X
 ClientSampleId : WC-15-1-5-GRME

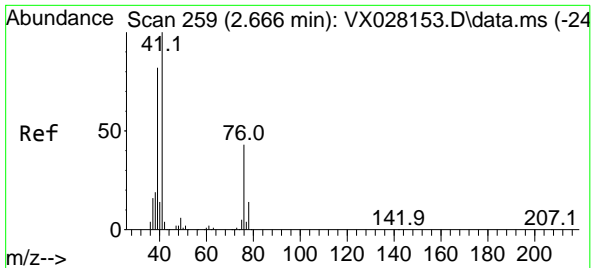
Tgt Ion: 59 Resp: 11234
 Ion Ratio Lower Upper
 59 100
 57 0.0 8.3 12.5#



#13
 Acrolein
 Concen: 0.230 ug/l
 RT: 2.245 min Scan# 190
 Delta R.T. 0.012 min
 Lab File: VX028163.D
 Acq: 19 Apr 2022 16:29

Tgt Ion: 56 Resp: 190
 Ion Ratio Lower Upper
 56 100
 55 0.0 55.0 82.6#



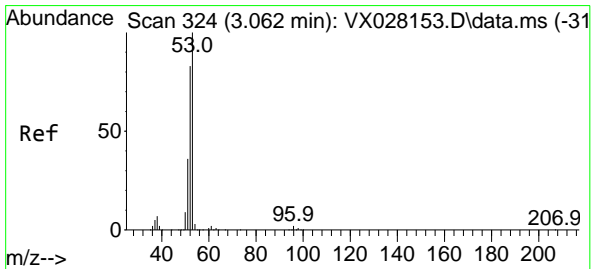
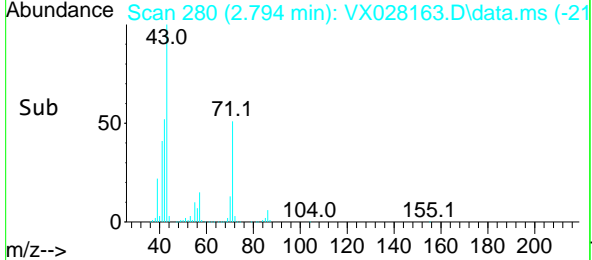
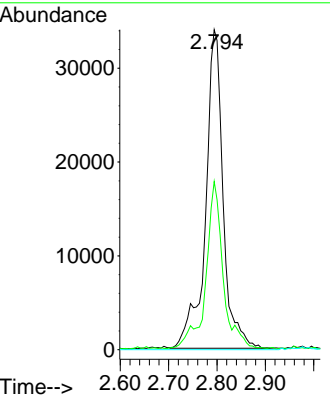
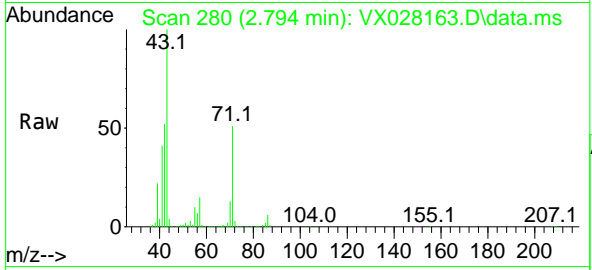


#14
 Allyl chloride
 Concen: 12.845 ug/l
 RT: 2.794 min Scan# 21
 Delta R.T. 0.128 min
 Lab File: VX028163.D
 Acq: 19 Apr 2022 16:29

Instrument : MSVOA_X
 ClientSampleId : WC-15-1-5-GRME

Tgt Ion: 41 Resp: 85712

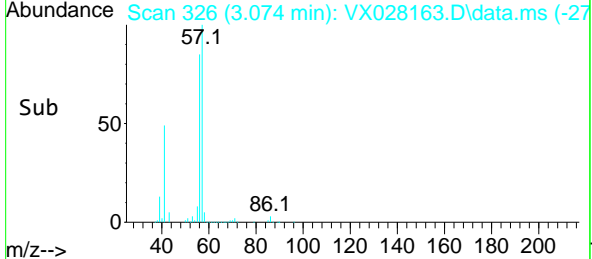
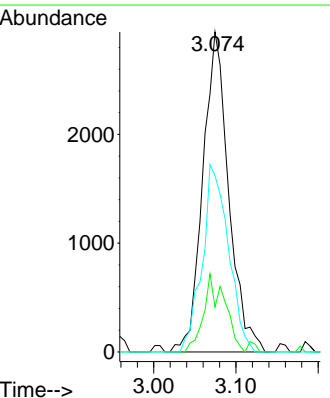
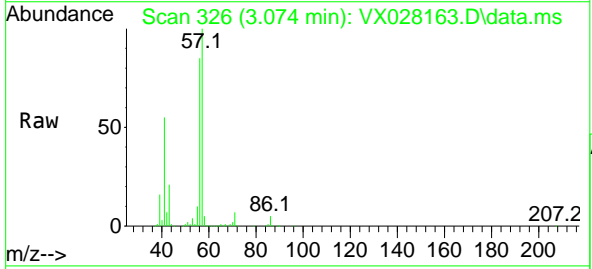
| Ion | Ratio | Lower | Upper |
|-----|-------|-------|-------|
| 41 | 100 | | |
| 39 | 51.2 | 50.4 | 75.6 |
| 76 | 0.0 | 32.7 | 49.1# |

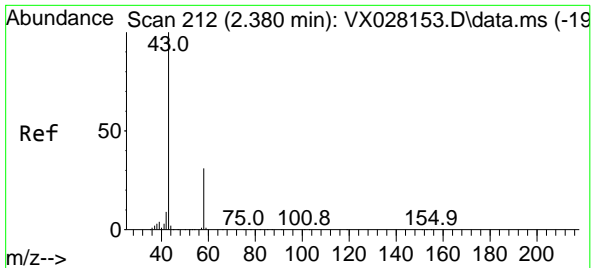


#15
 Acrylonitrile
 Concen: 2.342 ug/l
 RT: 3.074 min Scan# 326
 Delta R.T. 0.012 min
 Lab File: VX028163.D
 Acq: 19 Apr 2022 16:29

Tgt Ion: 53 Resp: 6440

| Ion | Ratio | Lower | Upper |
|-----|-------|-------|-------|
| 53 | 100 | | |
| 52 | 20.0 | 65.7 | 98.5# |
| 51 | 59.3 | 28.4 | 42.6# |

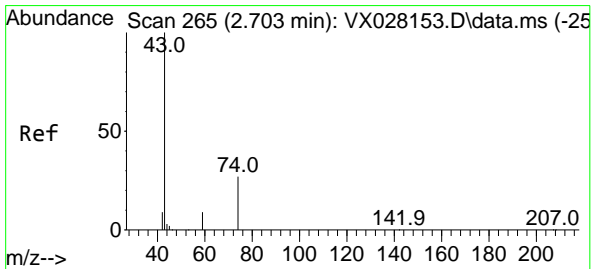
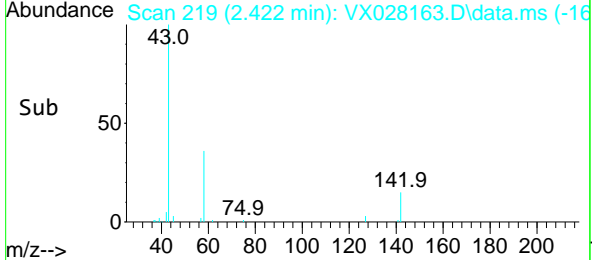
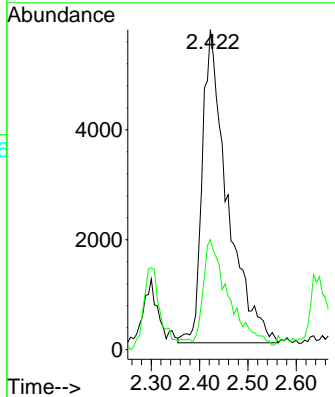
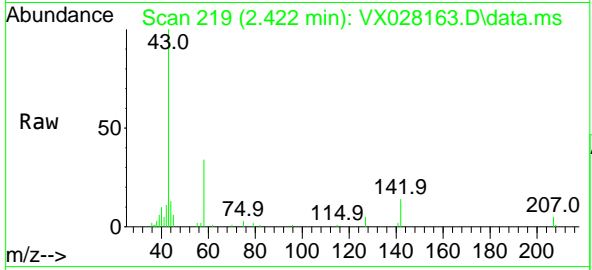




#16
 Acetone
 Concen: 8.653 ug/l
 RT: 2.422 min Scan# 211
 Delta R.T. 0.042 min
 Lab File: VX028163.D
 Acq: 19 Apr 2022 16:29

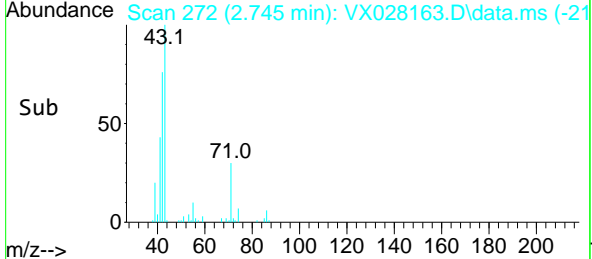
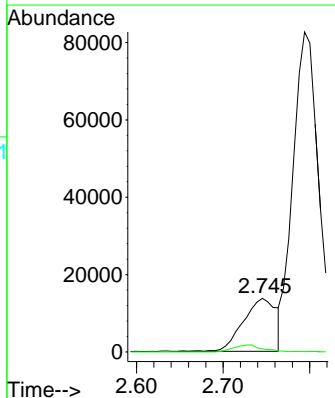
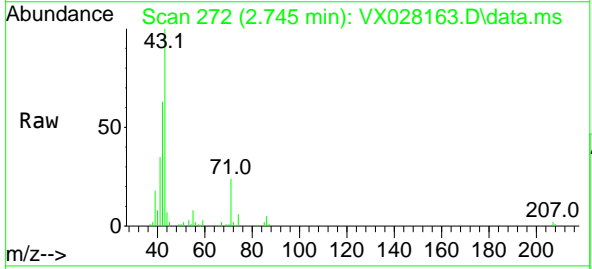
Instrument : MSVOA_X
 ClientSampleId : WC-15-1-5-GRME

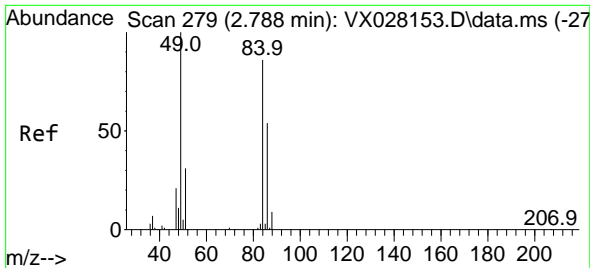
Tgt Ion: 43 Resp: 20609
 Ion Ratio Lower Upper
 43 100
 58 32.3 28.8 43.2



#18
 Methyl Acetate
 Concen: 6.040 ug/l
 RT: 2.745 min Scan# 272
 Delta R.T. 0.042 min
 Lab File: VX028163.D
 Acq: 19 Apr 2022 16:29

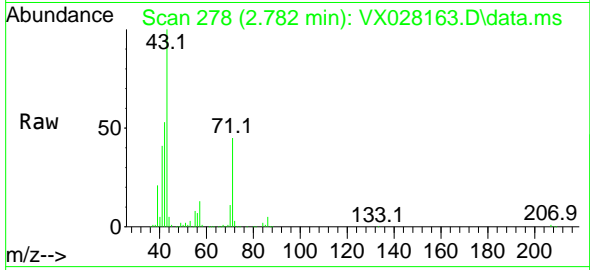
Tgt Ion: 43 Resp: 36231
 Ion Ratio Lower Upper
 43 100
 74 11.9 22.8 34.2#





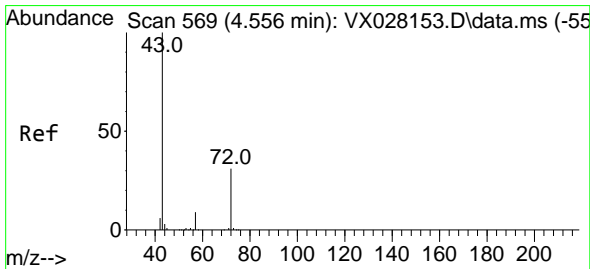
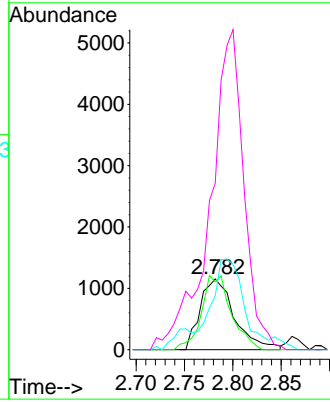
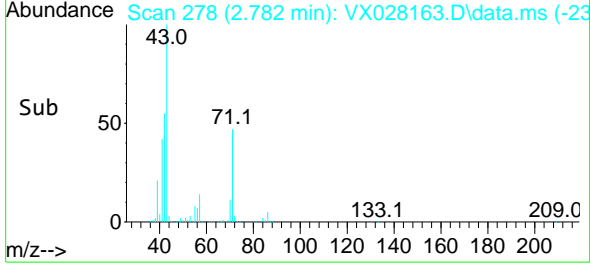
#20
 Methylene Chloride
 Concen: 0.570 ug/l
 RT: 2.782 min Scan# 21
 Delta R.T. -0.006 min
 Lab File: VX028163.D
 Acq: 19 Apr 2022 16:29

Instrument : MSVOA_X
 ClientSampleId : WC-15-1-5-GRME

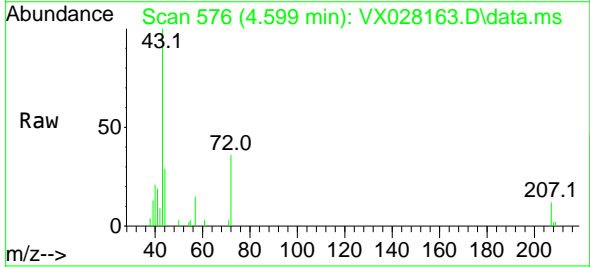


Tgt Ion: 84 Resp: 2853

| Ion | Ratio | Lower | Upper |
|-----|-------|-------|-------|
| 84 | 100 | | |
| 49 | 95.9 | 85.5 | 128.3 |
| 51 | 62.7 | 26.6 | 39.8# |
| 86 | 229.5 | 51.5 | 77.3# |

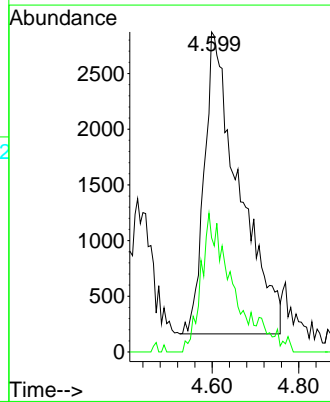
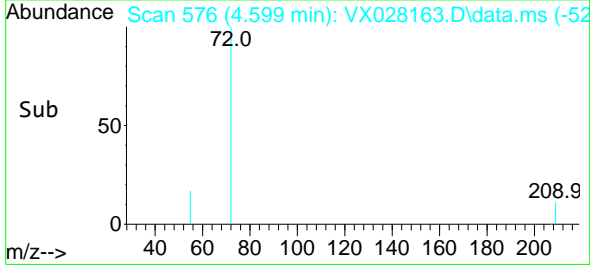


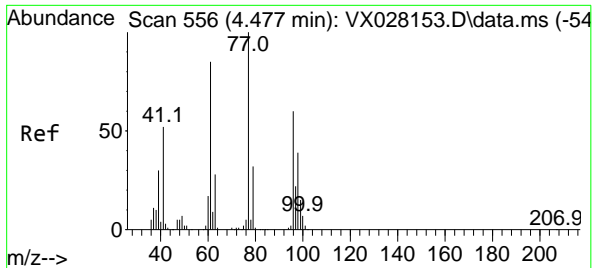
#25
 2-Butanone
 Concen: 3.776 ug/l
 RT: 4.599 min Scan# 576
 Delta R.T. 0.043 min
 Lab File: VX028163.D
 Acq: 19 Apr 2022 16:29



Tgt Ion: 43 Resp: 15087

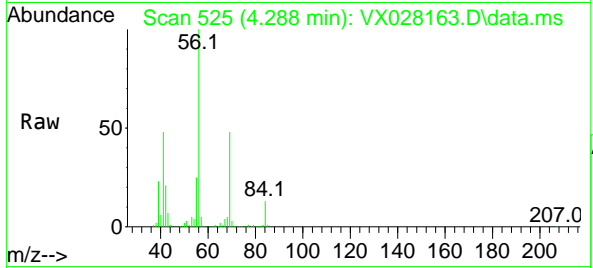
| Ion | Ratio | Lower | Upper |
|-----|-------|-------|-------|
| 43 | 100 | | |
| 72 | 37.8 | 24.4 | 36.6# |



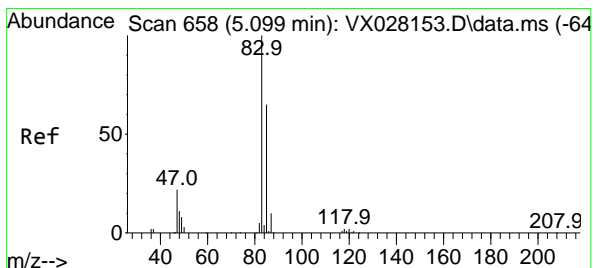
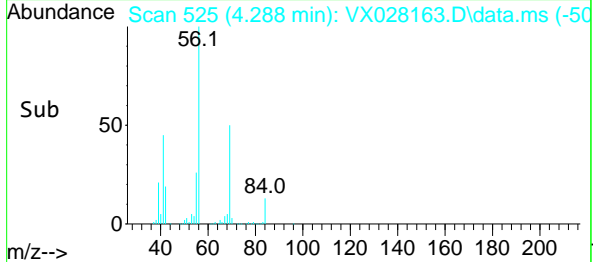
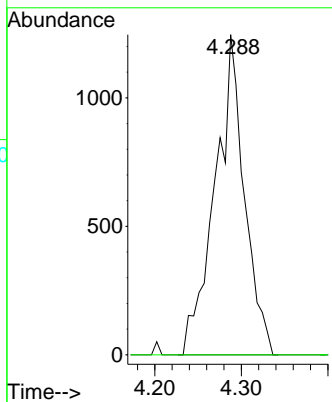


#26
 2,2-Dichloropropane
 Concen: 0.335 ug/l
 RT: 4.288 min Scan# 51
 Delta R.T. -0.189 min
 Lab File: VX028163.D
 Acq: 19 Apr 2022 16:29

Instrument : MSVOA_X
 ClientSampleId : WC-15-1-5-GRME

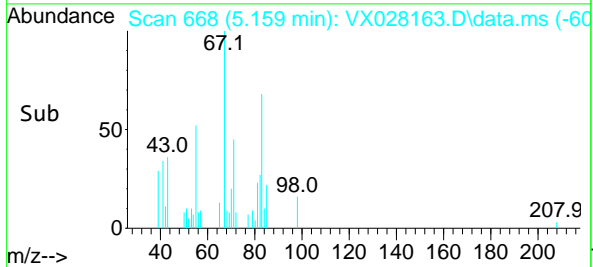
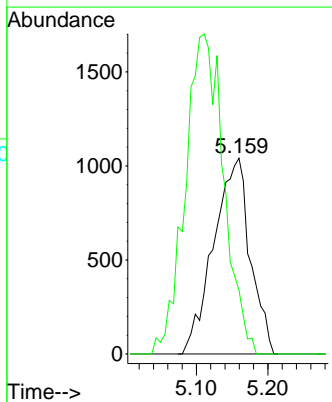
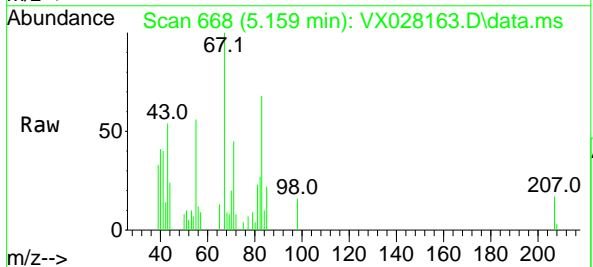


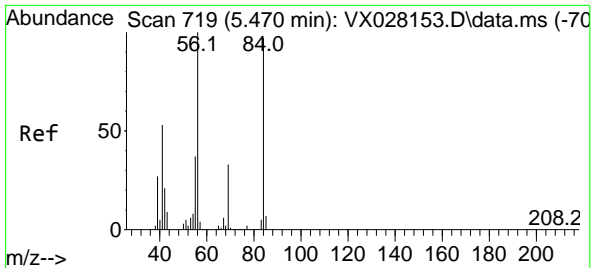
Tgt Ion: 77 Resp: 2932
 Ion Ratio Lower Upper
 77 100
 97 0.0 11.8 35.4#



#30
 Chloroform
 Concen: 0.344 ug/l
 RT: 5.159 min Scan# 668
 Delta R.T. 0.060 min
 Lab File: VX028163.D
 Acq: 19 Apr 2022 16:29

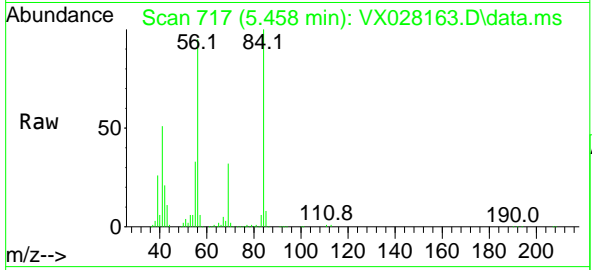
Tgt Ion: 83 Resp: 3704
 Ion Ratio Lower Upper
 83 100
 85 32.6 52.7 79.1#





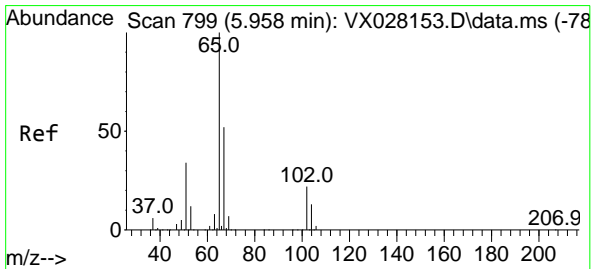
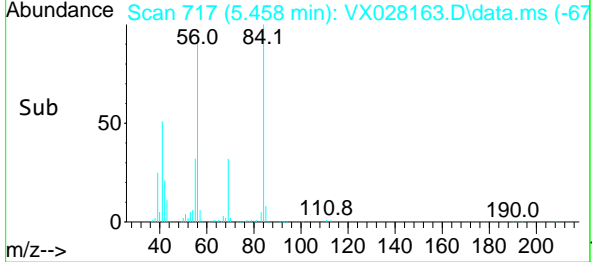
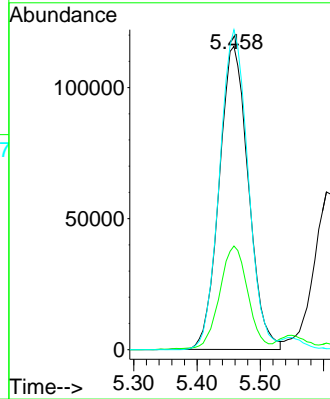
#31
 Cyclohexane
 Concen: 45.189 ug/l
 RT: 5.458 min Scan# 717
 Delta R.T. -0.012 min
 Lab File: VX028163.D
 Acq: 19 Apr 2022 16:29

Instrument : MSVOA_X
 ClientSampleId : WC-15-1-5-GRME



Tgt Ion: 56 Resp: 371461

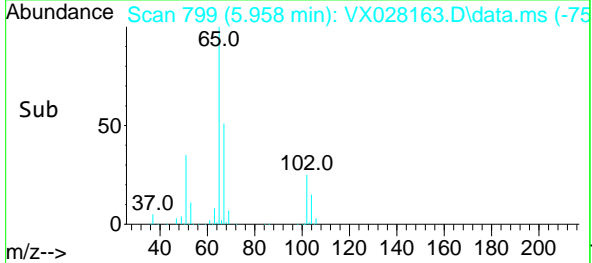
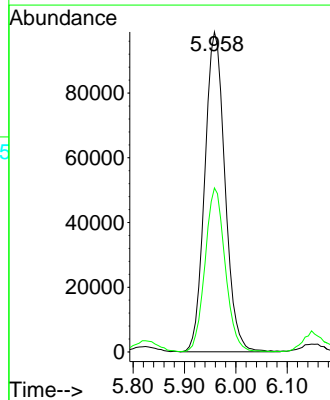
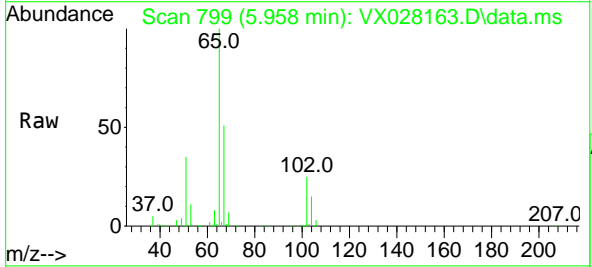
| Ion | Ratio | Lower | Upper |
|-----|-------|-------|-------|
| 56 | 100 | | |
| 69 | 33.8 | 26.7 | 40.1 |
| 84 | 105.6 | 77.2 | 115.8 |

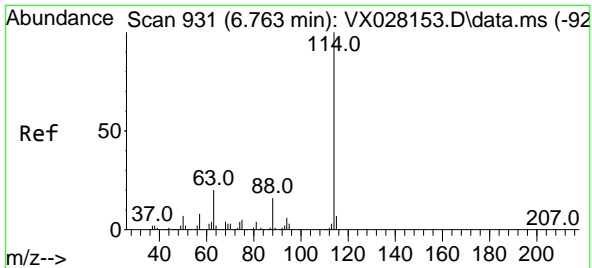


#33
 1,2-Dichloroethane-d4
 Concen: 40.033 ug/l
 RT: 5.958 min Scan# 799
 Delta R.T. 0.000 min
 Lab File: VX028163.D
 Acq: 19 Apr 2022 16:29

Tgt Ion: 65 Resp: 270107

| Ion | Ratio | Lower | Upper |
|-----|-------|-------|-------|
| 65 | 100 | | |
| 67 | 50.9 | 0.0 | 107.4 |



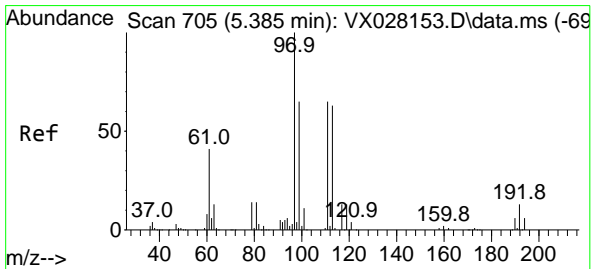
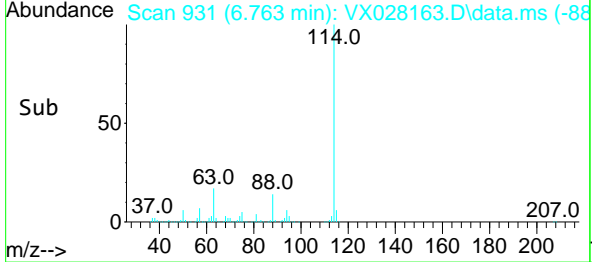
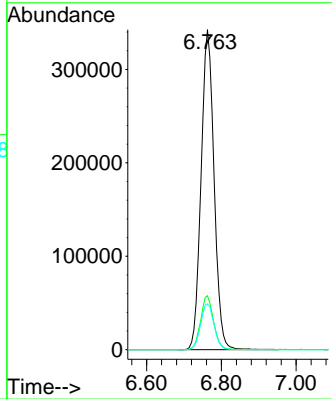
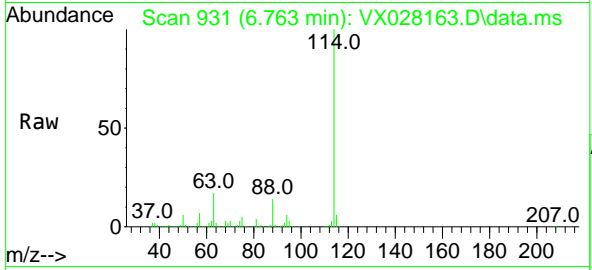


#34
 1,4-Difluorobenzene
 Concen: 50.000 ug/l
 RT: 6.763 min Scan# 911
 Delta R.T. -0.000 min
 Lab File: VX028163.D
 Acq: 19 Apr 2022 16:29

Instrument : MSVOA_X
 ClientSampleId : WC-15-1-5-GRME

Tgt Ion:114 Resp: 825070

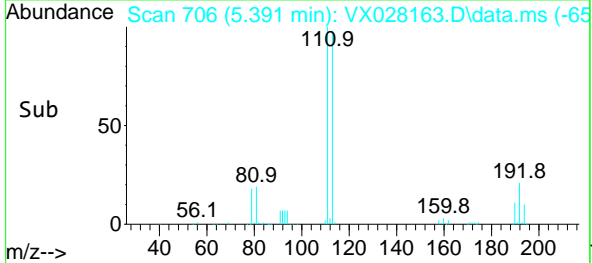
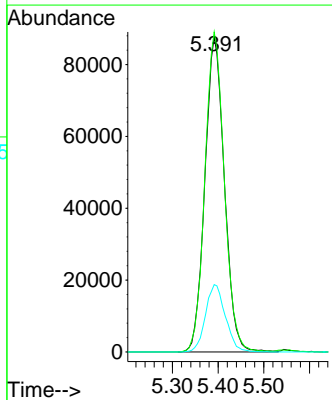
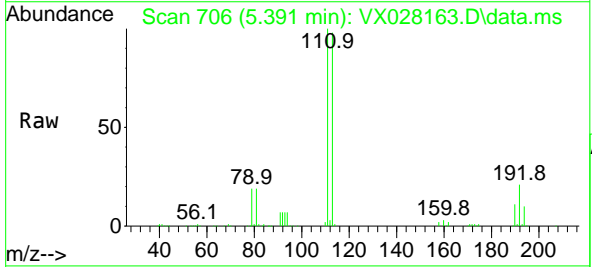
| Ion | Ratio | Lower | Upper |
|-----|-------|-------|-------|
| 114 | 100 | | |
| 63 | 16.9 | 0.0 | 36.8 |
| 88 | 14.3 | 0.0 | 32.4 |

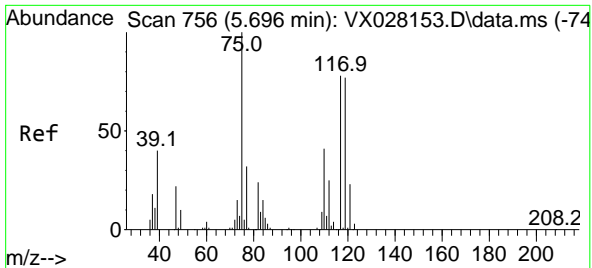


#35
 Dibromofluoromethane
 Concen: 44.930 ug/l
 RT: 5.391 min Scan# 706
 Delta R.T. 0.006 min
 Lab File: VX028163.D
 Acq: 19 Apr 2022 16:29

Tgt Ion:113 Resp: 259970

| Ion | Ratio | Lower | Upper |
|-----|-------|-------|-------|
| 113 | 100 | | |
| 111 | 101.3 | 82.8 | 124.2 |
| 192 | 21.8 | 16.9 | 25.3 |

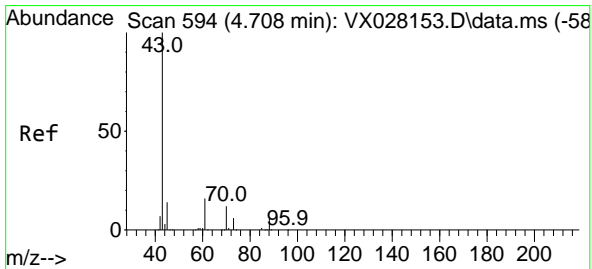
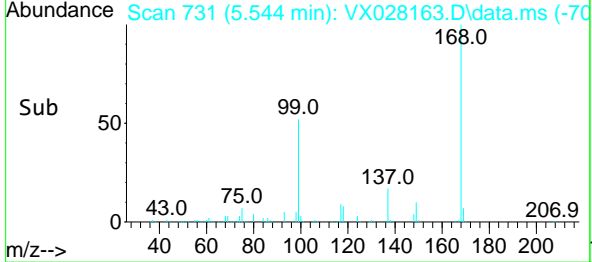
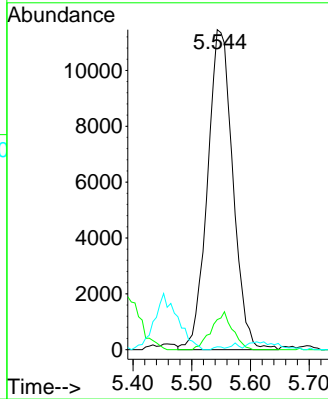
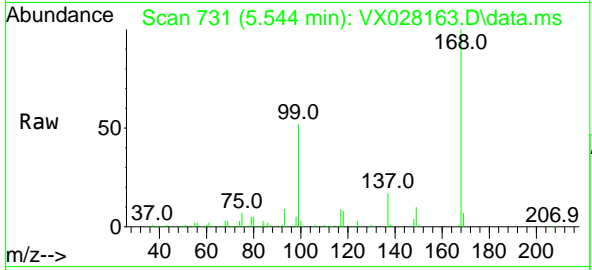




#36
 1,1-Dichloropropene
 Concen: 4.549 ug/l
 RT: 5.544 min Scan# 711
 Delta R.T. -0.152 min
 Lab File: VX028163.D
 Acq: 19 Apr 2022 16:29

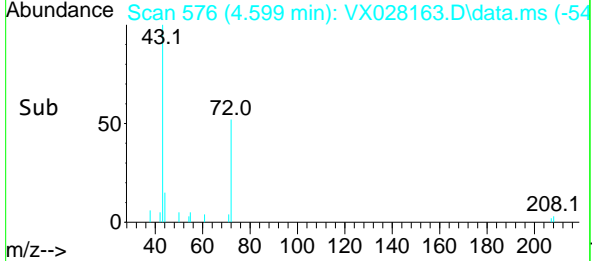
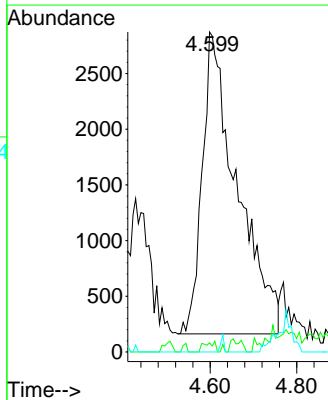
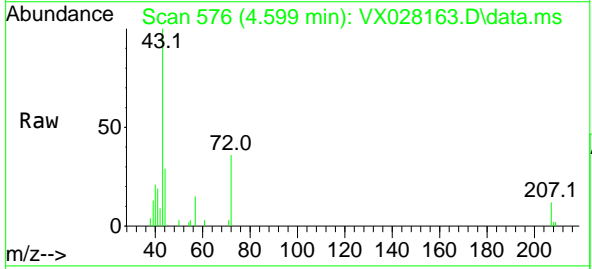
Instrument : MSVOA_X
 ClientSampleId : WC-15-1-5-GRME

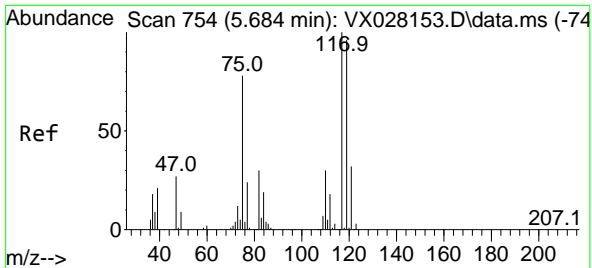
| Tgt Ion | Resp | Lower | Upper |
|---------|-------|-------|-------|
| 75 | 34334 | | |
| 75 | 100 | | |
| 110 | 9.8 | 18.3 | 54.8# |
| 77 | 0.0 | 24.8 | 37.2# |



#37
 Ethyl Acetate
 Concen: 1.970 ug/l
 RT: 4.599 min Scan# 576
 Delta R.T. -0.109 min
 Lab File: VX028163.D
 Acq: 19 Apr 2022 16:29

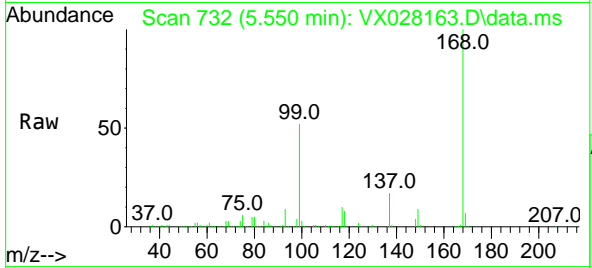
| Tgt Ion | Resp | Lower | Upper |
|---------|-------|-------|-------|
| 43 | 15087 | | |
| 43 | 100 | | |
| 61 | 0.5 | 12.6 | 19.0# |
| 70 | 0.0 | 10.2 | 15.2# |



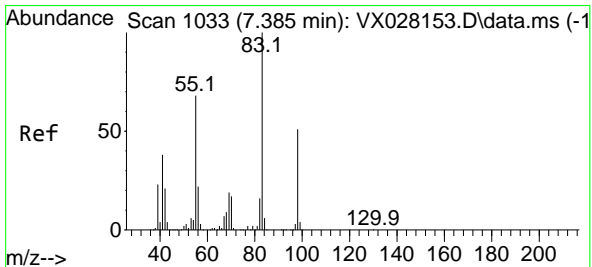
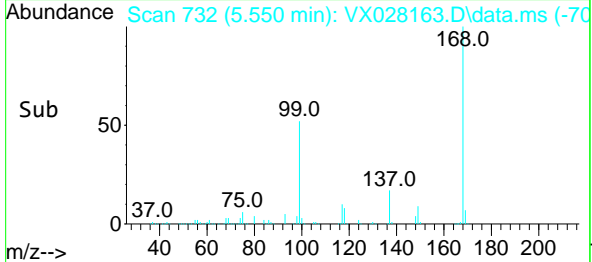
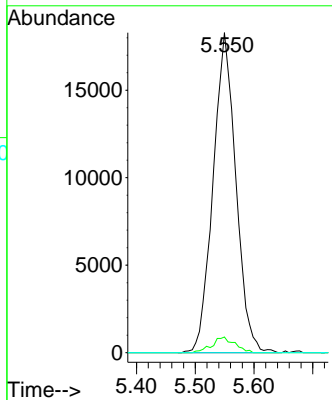


#38
 Carbon Tetrachloride
 Concen: 5.785 ug/l
 RT: 5.550 min Scan# 71
 Delta R.T. -0.134 min
 Lab File: VX028163.D
 Acq: 19 Apr 2022 16:29

Instrument : MSVOA_X
 ClientSampleId : WC-15-1-5-GRME

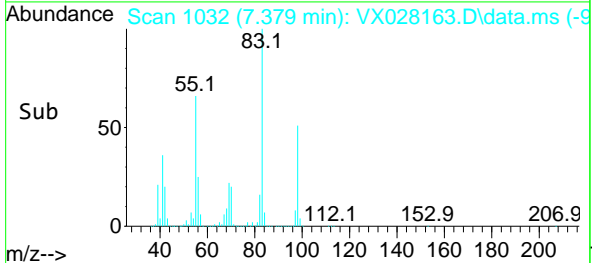
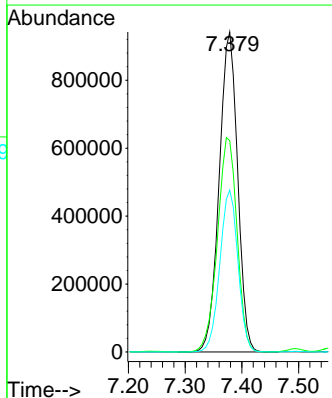
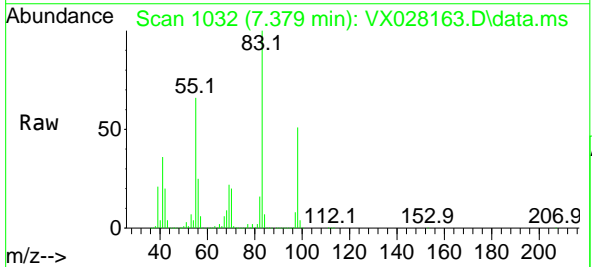


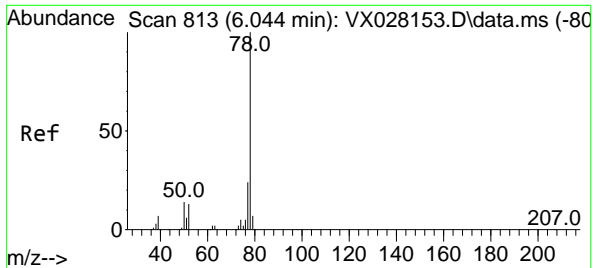
Tgt Ion:117 Resp: 49293
 Ion Ratio Lower Upper
 117 100
 119 4.9 77.3 115.9#
 121 0.0 24.2 36.2#



#39
 Methylcyclohexane
 Concen: 222.966 ug/l
 RT: 7.379 min Scan# 1032
 Delta R.T. -0.006 min
 Lab File: VX028163.D
 Acq: 19 Apr 2022 16:29

Tgt Ion: 83 Resp: 2123326
 Ion Ratio Lower Upper
 83 100
 55 66.0 54.6 81.8
 98 50.6 37.4 56.2

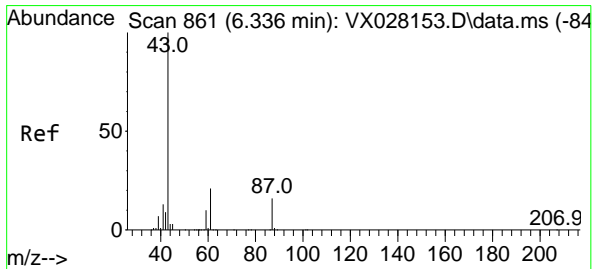
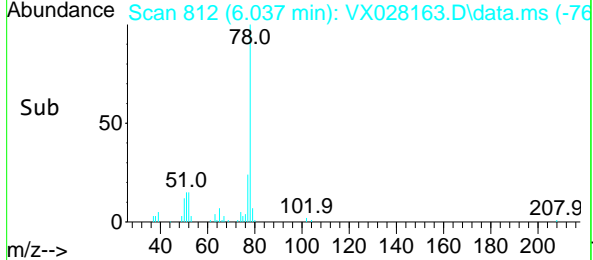
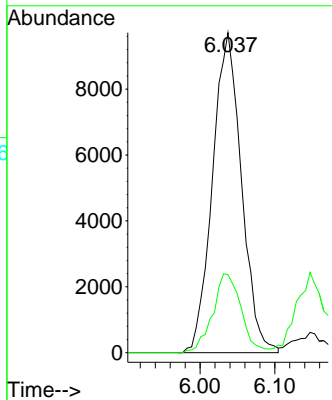
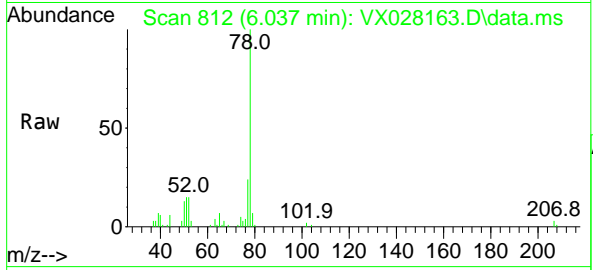




#40
 Benzene
 Concen: 1.184 ug/l
 RT: 6.037 min Scan# 812
 Delta R.T. -0.007 min
 Lab File: VX028163.D
 Acq: 19 Apr 2022 16:29

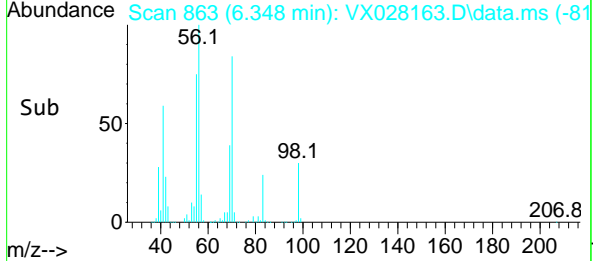
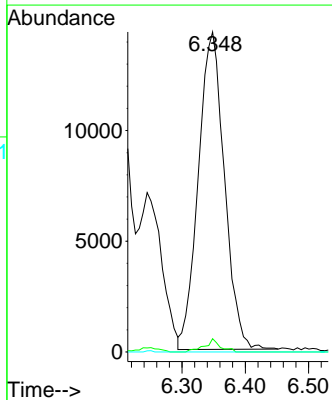
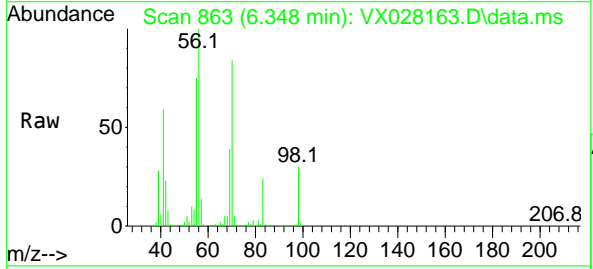
Instrument : MSVOA_X
 ClientSampleId : WC-15-1-5-GRME

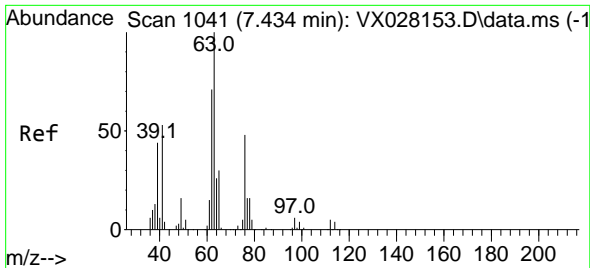
Tgt Ion: 78 Resp: 26169
 Ion Ratio Lower Upper
 78 100
 77 24.4 19.3 28.9



#43
 Isopropyl Acetate
 Concen: 3.299 ug/l
 RT: 6.348 min Scan# 863
 Delta R.T. 0.012 min
 Lab File: VX028163.D
 Acq: 19 Apr 2022 16:29

Tgt Ion: 43 Resp: 41116
 Ion Ratio Lower Upper
 43 100
 61 2.5 18.5 27.7#
 87 0.0 13.0 19.6#

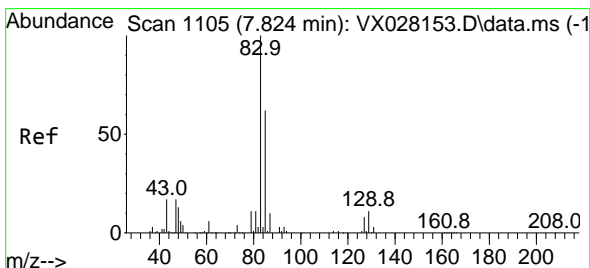
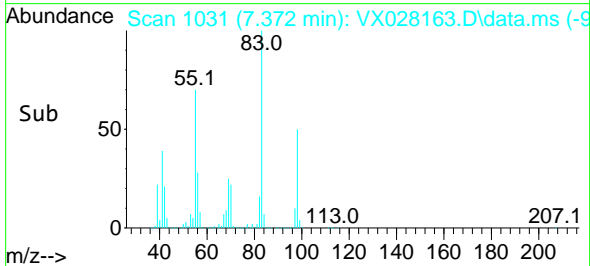
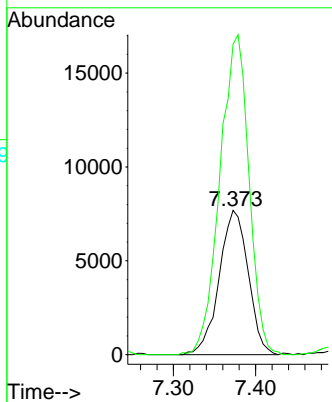
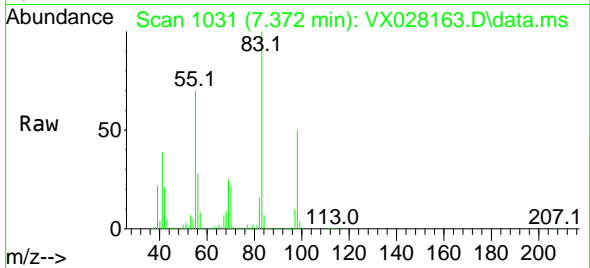




#45
 1,2-Dichloropropane
 Concen: 3.498 ug/l
 RT: 7.372 min Scan# 1097
 Delta R.T. -0.062 min
 Lab File: VX028163.D
 Acq: 19 Apr 2022 16:29

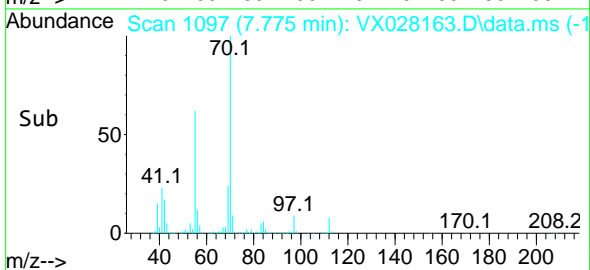
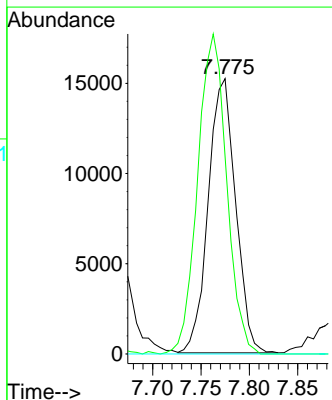
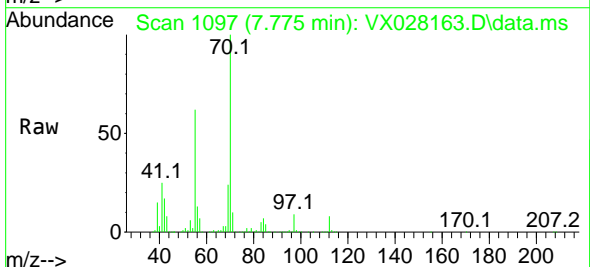
Instrument : MSVOA_X
 ClientSampleId : WC-15-1-5-GRME

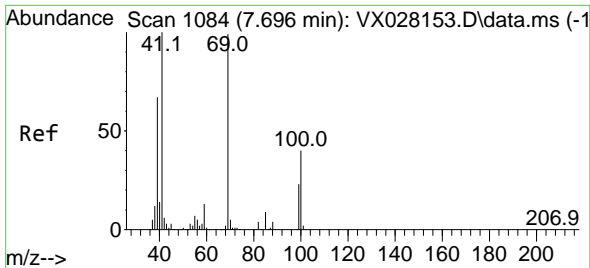
Tgt Ion: 63 Resp: 18917
 Ion Ratio Lower Upper
 63 100
 65 215.2 25.8 38.6#



#47
 Bromodichloromethane
 Concen: 3.669 ug/l
 RT: 7.775 min Scan# 1097
 Delta R.T. -0.049 min
 Lab File: VX028163.D
 Acq: 19 Apr 2022 16:29

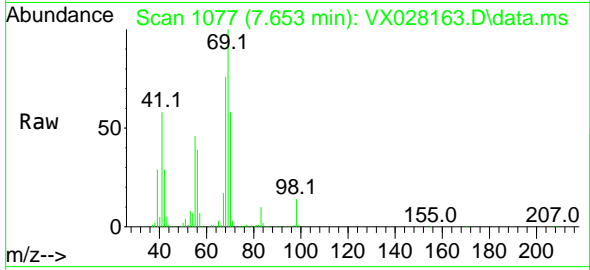
Tgt Ion: 83 Resp: 29913
 Ion Ratio Lower Upper
 83 100
 85 72.0 52.2 78.2
 127 0.0 6.8 10.2#



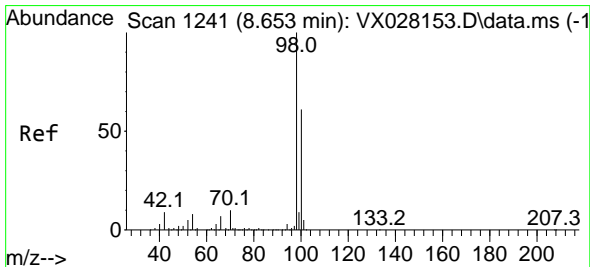
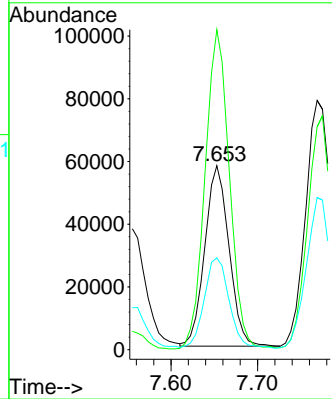
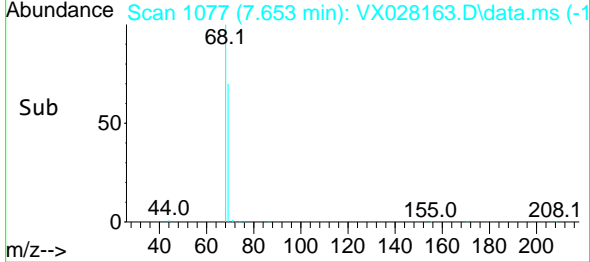


#48
 Methyl methacrylate
 Concen: 19.516 ug/l
 RT: 7.653 min Scan# 1084
 Delta R.T. -0.043 min
 Lab File: VX028163.D
 Acq: 19 Apr 2022 16:29

Instrument : MSVOA_X
 ClientSampleId : WC-15-1-5-GRME

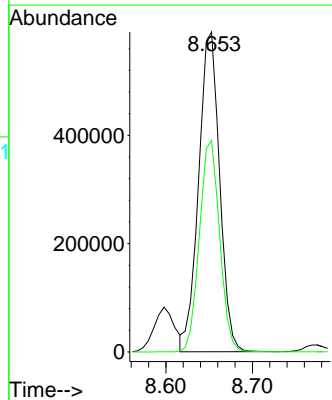
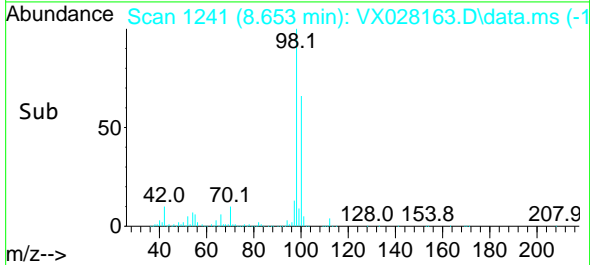
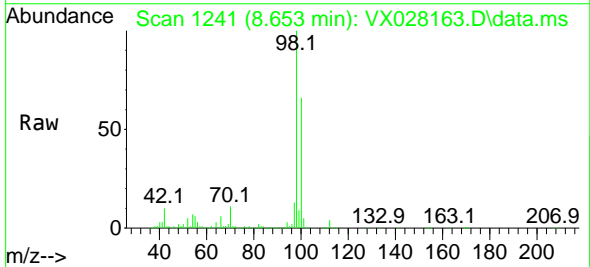


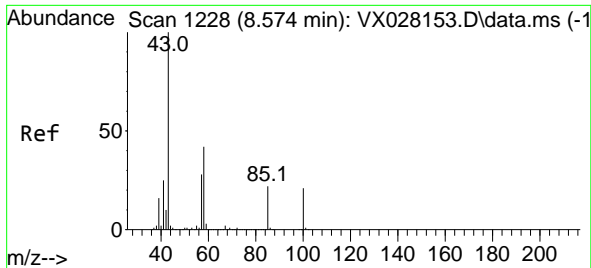
Tgt Ion: 41 Resp: 111680
 Ion Ratio Lower Upper
 41 100
 69 178.6 82.5 123.7#
 39 51.4 43.8 65.8



#50
 Toluene-d8
 Concen: 44.746 ug/l
 RT: 8.653 min Scan# 1241
 Delta R.T. -0.000 min
 Lab File: VX028163.D
 Acq: 19 Apr 2022 16:29

Tgt Ion: 98 Resp: 994412
 Ion Ratio Lower Upper
 98 100
 100 63.9 52.6 78.8

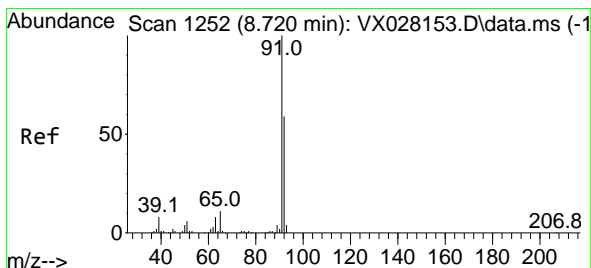
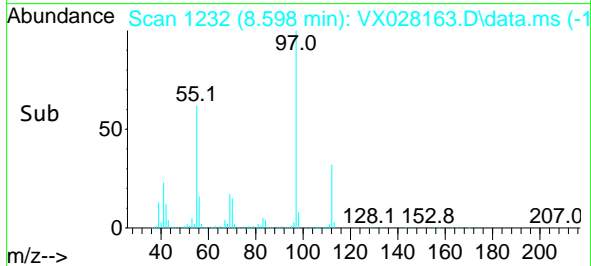
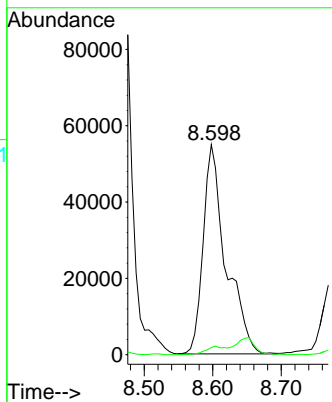
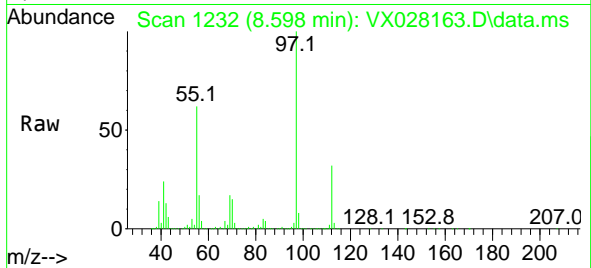




#51
 4-Methyl-2-Pentanone
 Concen: 15.804 ug/l
 RT: 8.598 min Scan# 11
 Delta R.T. 0.024 min
 Lab File: VX028163.D
 Acq: 19 Apr 2022 16:29

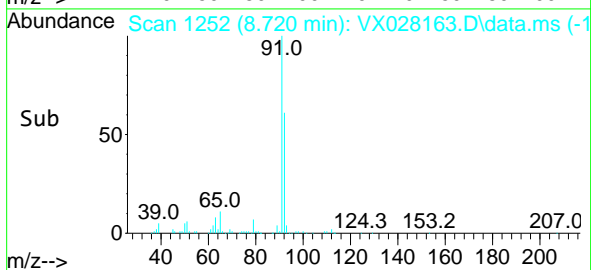
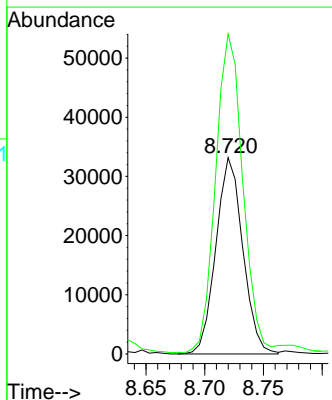
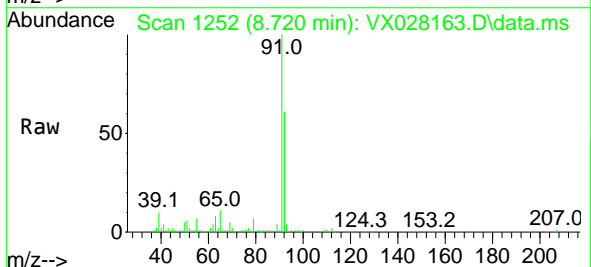
Instrument : MSVOA_X
 ClientSampleId : WC-15-1-5-GRME

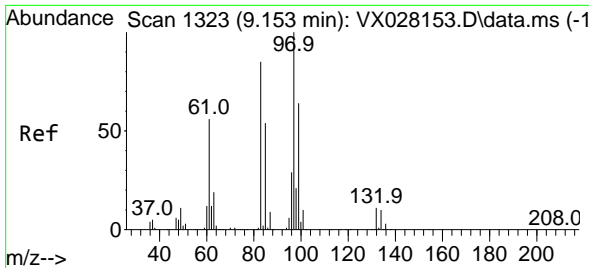
Tgt Ion: 43 Resp: 126402
 Ion Ratio Lower Upper
 43 100
 58 3.7 36.1 54.1#



#52
 Toluene
 Concen: 3.448 ug/l
 RT: 8.720 min Scan# 1252
 Delta R.T. -0.000 min
 Lab File: VX028163.D
 Acq: 19 Apr 2022 16:29

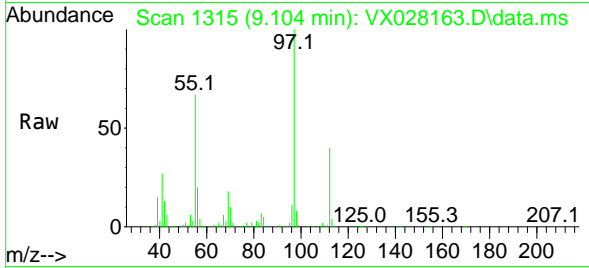
Tgt Ion: 92 Resp: 52916
 Ion Ratio Lower Upper
 92 100
 91 163.9 137.5 206.3





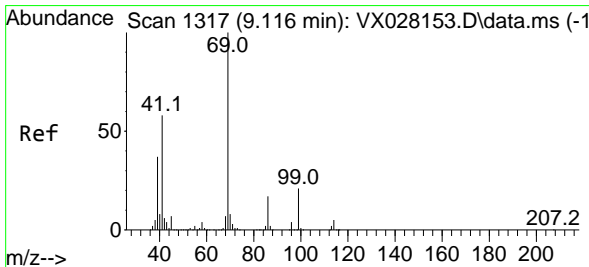
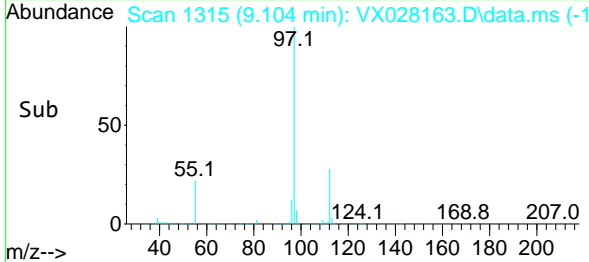
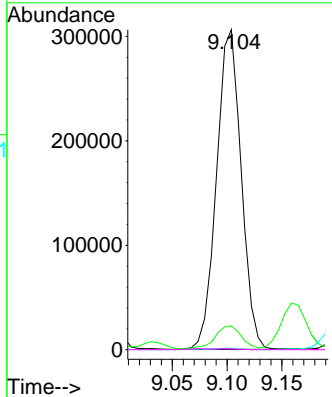
#55
 1,1,2-Trichloroethane
 Concen: 76.790 ug/l
 RT: 9.104 min Scan# 1315
 Delta R.T. -0.049 min
 Lab File: VX028163.D
 Acq: 19 Apr 2022 16:29

Instrument : MSVOA_X
 ClientSampleId : WC-15-1-5-GRME



Tgt Ion: 97 Resp: 478894

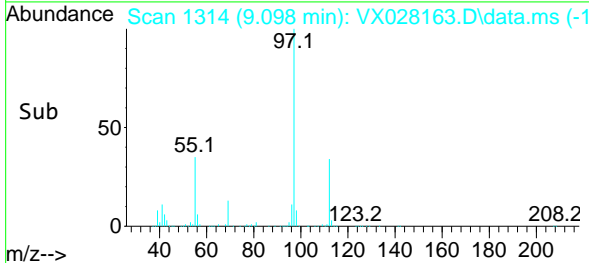
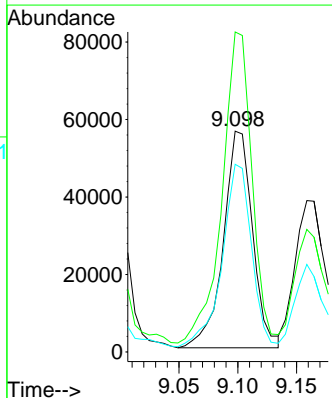
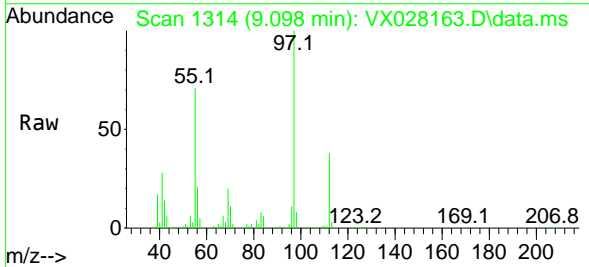
| Ion | Ratio | Lower | Upper |
|-----|-------|-------|-------|
| 97 | 100 | | |
| 83 | 7.2 | 66.2 | 99.4# |
| 85 | 0.4 | 42.9 | 64.3# |
| 99 | 0.3 | 49.0 | 73.6# |

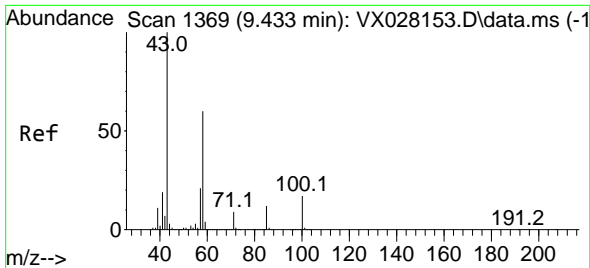


#56
 Ethyl methacrylate
 Concen: 10.716 ug/l
 RT: 9.098 min Scan# 1314
 Delta R.T. -0.018 min
 Lab File: VX028163.D
 Acq: 19 Apr 2022 16:29

Tgt Ion: 69 Resp: 96874

| Ion | Ratio | Lower | Upper |
|-----|-------|-------|-------|
| 69 | 100 | | |
| 41 | 145.3 | 43.8 | 65.6# |
| 39 | 84.1 | 22.2 | 33.2# |

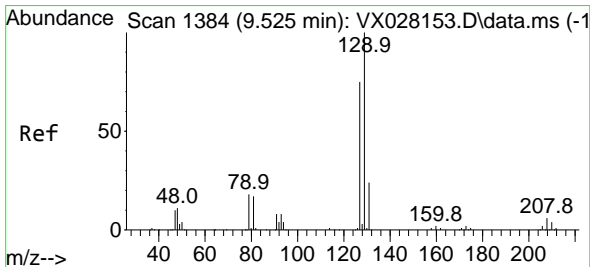
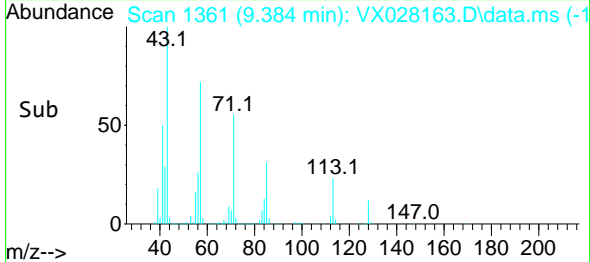
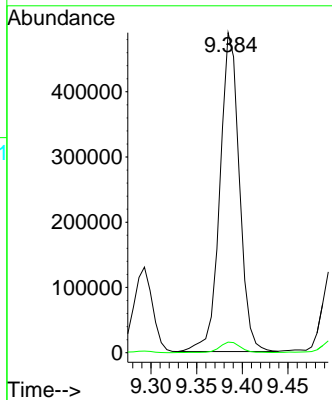
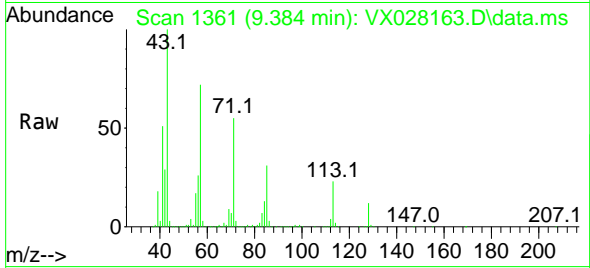




#59
 2-Hexanone
 Concen: 117.241 ug/l
 RT: 9.384 min Scan# 1361
 Delta R.T. -0.049 min
 Lab File: VX028163.D
 Acq: 19 Apr 2022 16:29

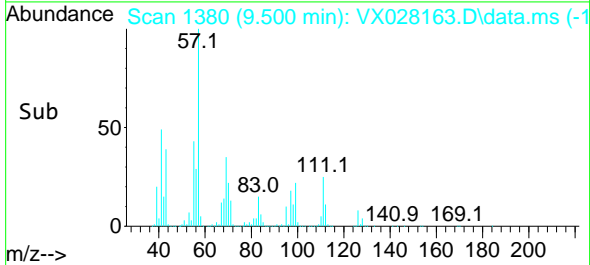
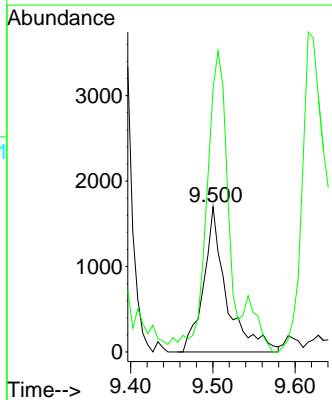
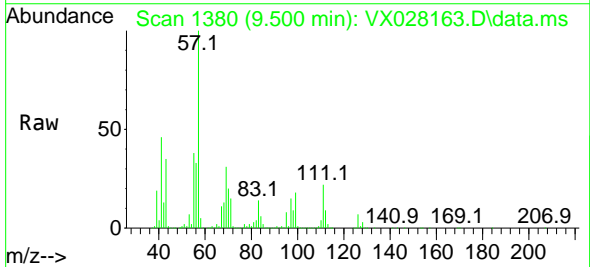
Instrument : MSVOA_X
 ClientSampleId : WC-15-1-5-GRME

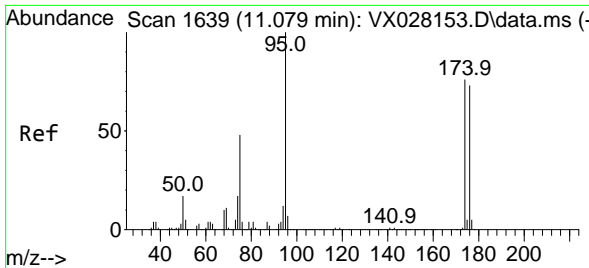
Tgt Ion: 43 Resp: 726377
 Ion Ratio Lower Upper
 43 100
 58 3.6 31.9 95.7#



#60
 Dibromochloromethane
 Concen: 0.483 ug/l
 RT: 9.500 min Scan# 1380
 Delta R.T. -0.025 min
 Lab File: VX028163.D
 Acq: 19 Apr 2022 16:29

Tgt Ion: 129 Resp: 3283
 Ion Ratio Lower Upper
 129 100
 127 178.9 40.3 120.8#

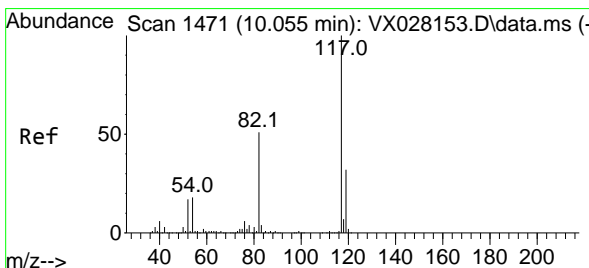
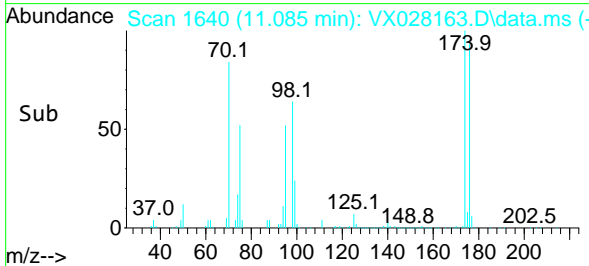
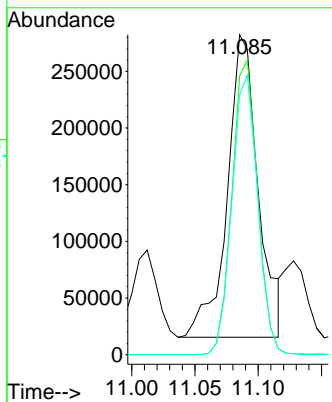
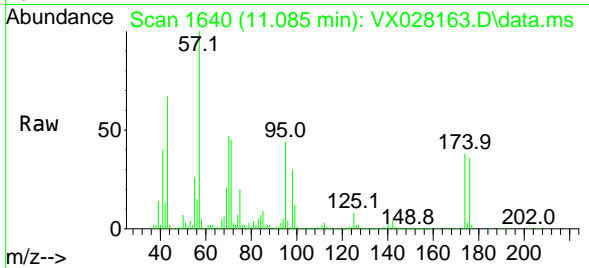




#62
 4-Bromofluorobenzene
 Concen: 53.603 ug/l
 RT: 11.085 min Scan# 110
 Delta R.T. 0.006 min
 Lab File: VX028163.D
 Acq: 19 Apr 2022 16:29

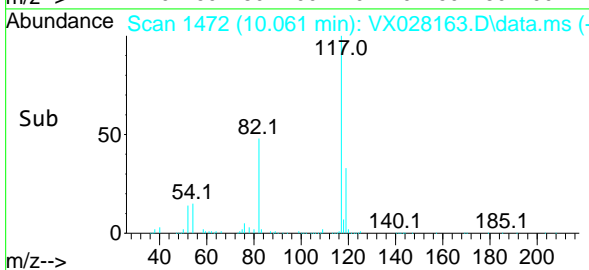
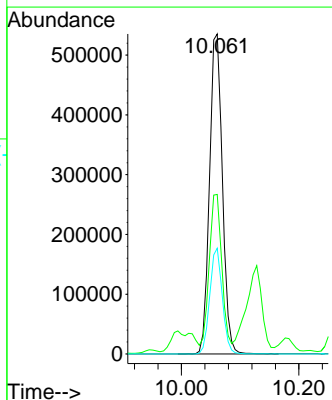
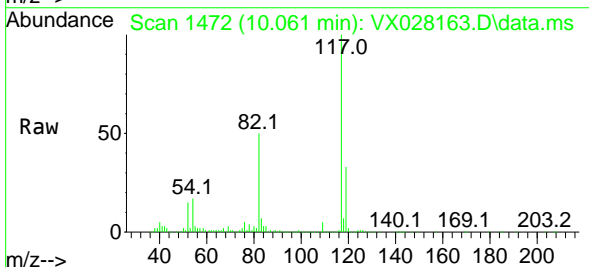
Instrument :
 MSVOA_X
 ClientSampleId :
 WC-15-1-5-GRME

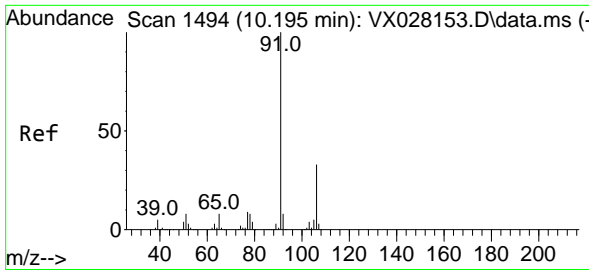
Tgt Ion: 95 Resp: 455483
 Ion Ratio Lower Upper
 95 100
 174 80.7 0.0 163.0
 176 76.9 0.0 155.0



#63
 Chlorobenzene-d5
 Concen: 50.000 ug/l
 RT: 10.061 min Scan# 1472
 Delta R.T. 0.006 min
 Lab File: VX028163.D
 Acq: 19 Apr 2022 16:29

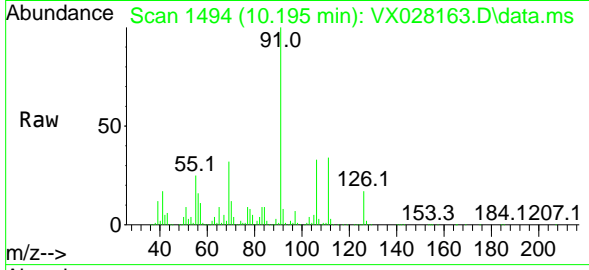
Tgt Ion: 117 Resp: 814931
 Ion Ratio Lower Upper
 117 100
 82 47.1 41.8 62.8
 119 33.0 24.8 37.2



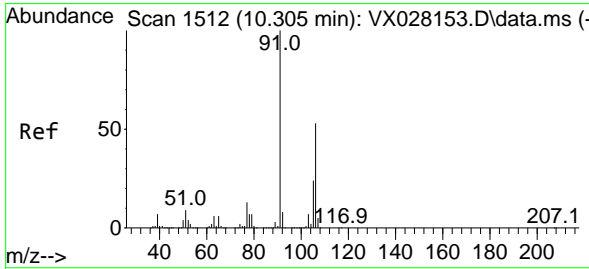
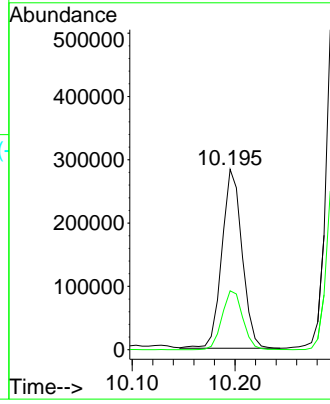
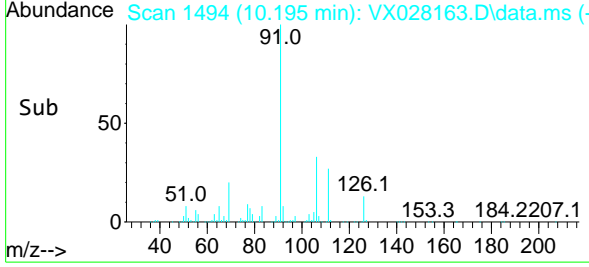


#67
 Ethyl Benzene
 Concen: 13.210 ug/l
 RT: 10.195 min Scan# 1494
 Delta R.T. 0.000 min
 Lab File: VX028163.D
 Acq: 19 Apr 2022 16:29

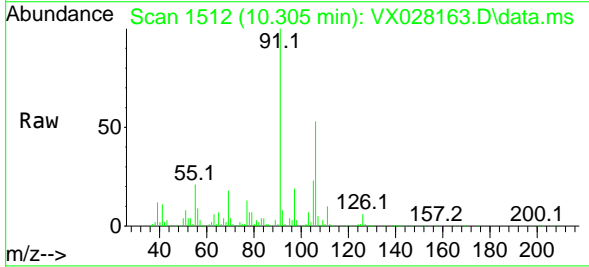
Instrument : MSVOA_X
 ClientSampleId : WC-15-1-5-GRME



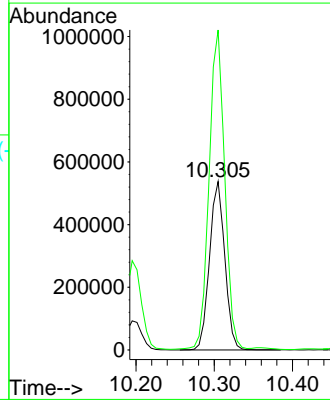
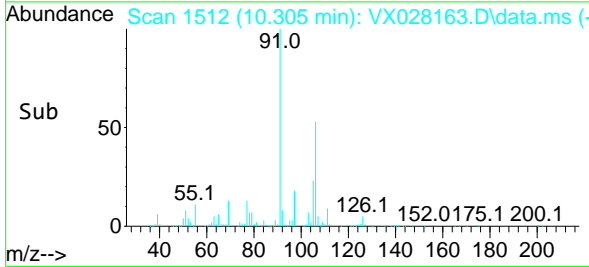
Tgt Ion: 91 Resp: 384868
 Ion Ratio Lower Upper
 91 100
 106 32.9 24.6 36.8

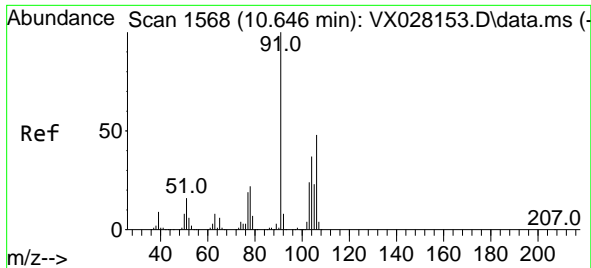


#68
 m/p-Xylenes
 Concen: 61.224 ug/l
 RT: 10.305 min Scan# 1512
 Delta R.T. -0.000 min
 Lab File: VX028163.D
 Acq: 19 Apr 2022 16:29



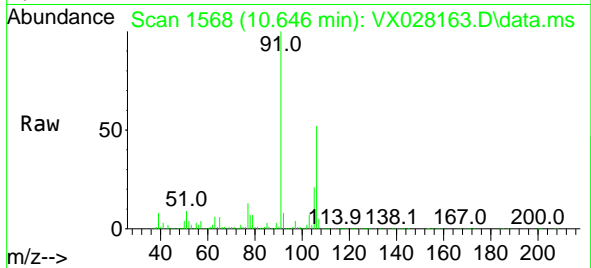
Tgt Ion: 106 Resp: 725969
 Ion Ratio Lower Upper
 106 100
 91 193.0 160.4 240.6



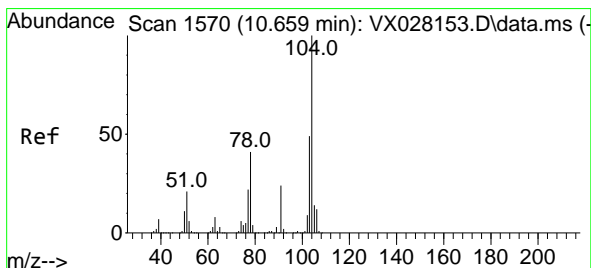
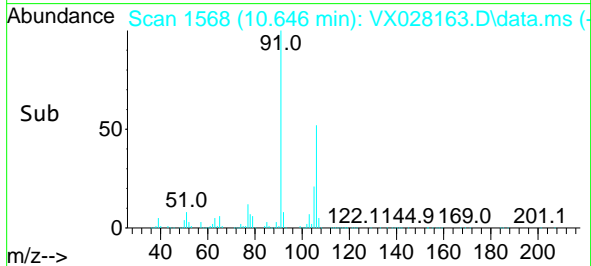
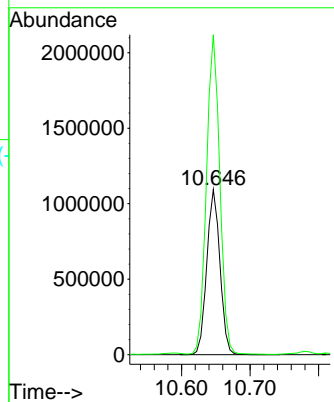


#69
 o-Xylene
 Concen: 123.606 ug/l
 RT: 10.646 min Scan# 1568
 Delta R.T. 0.000 min
 Lab File: VX028163.D
 Acq: 19 Apr 2022 16:29

Instrument : MSVOA_X
 ClientSampleId : WC-15-1-5-GRME

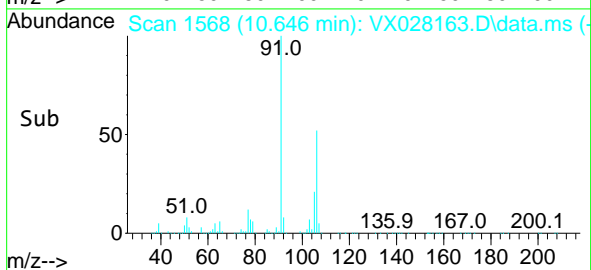
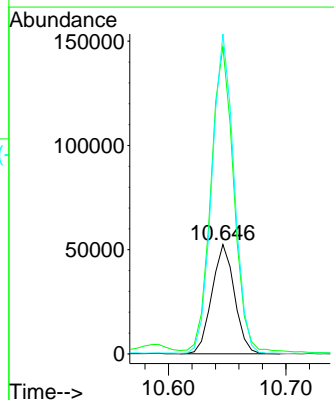
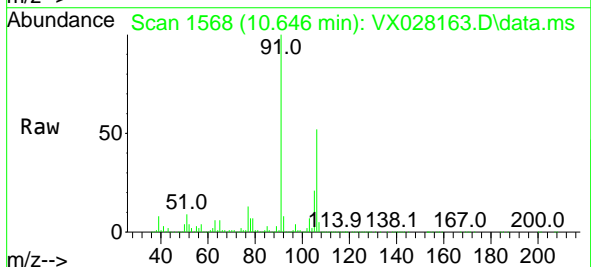


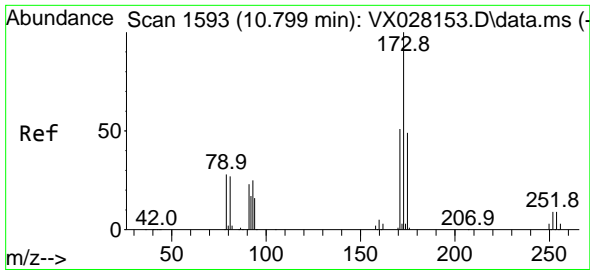
Tgt Ion:106 Resp: 1461309
 Ion Ratio Lower Upper
 106 100
 91 196.6 106.1 318.1



#70
 Styrene
 Concen: 3.657 ug/l
 RT: 10.646 min Scan# 1568
 Delta R.T. -0.013 min
 Lab File: VX028163.D
 Acq: 19 Apr 2022 16:29

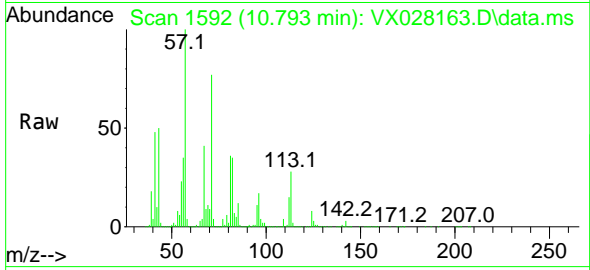
Tgt Ion:104 Resp: 70034
 Ion Ratio Lower Upper
 104 100
 78 284.1 38.6 57.8#
 103 285.3 43.8 65.8#



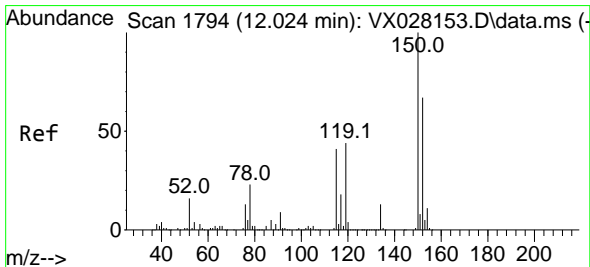
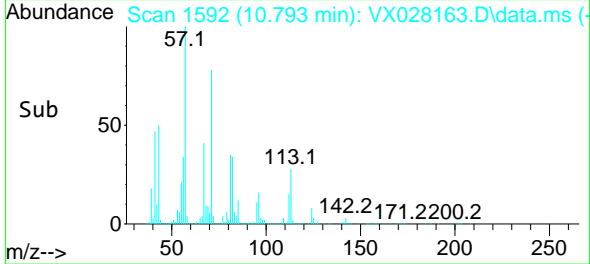
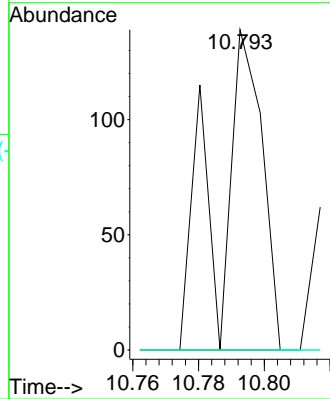


#71
 Bromoform
 Concen: 3.596 ug/l
 RT: 10.793 min Scan# 11
 Delta R.T. -0.006 min
 Lab File: VX028163.D
 Acq: 19 Apr 2022 16:29

Instrument :
 MSVOA_X
 ClientSampleId :
 WC-15-1-5-GRME

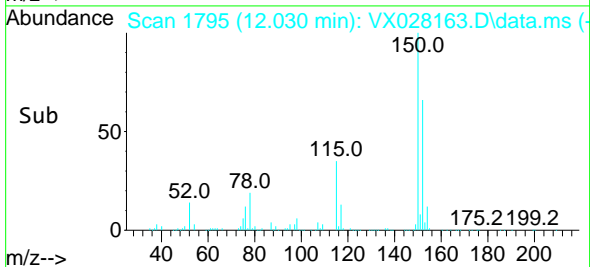
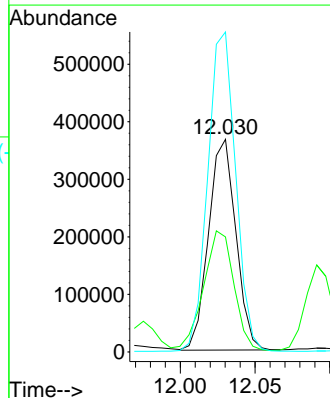
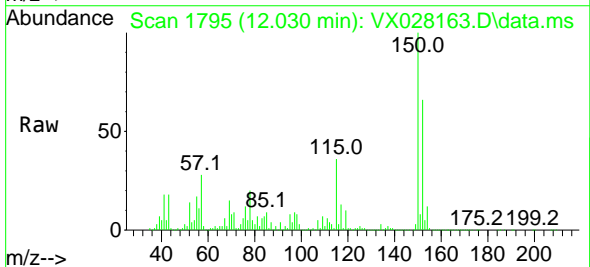


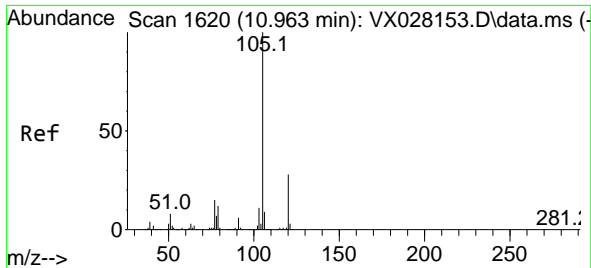
Tgt Ion:173 Resp: 131
 Ion Ratio Lower Upper
 173 100
 175 0.0 24.1 72.2#
 254 0.0 0.1 0.1#



#72
 1,4-Dichlorobenzene-d4
 Concen: 50.000 ug/l
 RT: 12.030 min Scan# 1795
 Delta R.T. 0.006 min
 Lab File: VX028163.D
 Acq: 19 Apr 2022 16:29

Tgt Ion:152 Resp: 466412
 Ion Ratio Lower Upper
 152 100
 115 62.8 37.5 112.7
 150 154.6 0.0 338.2

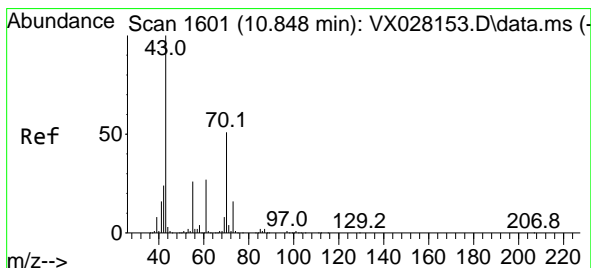
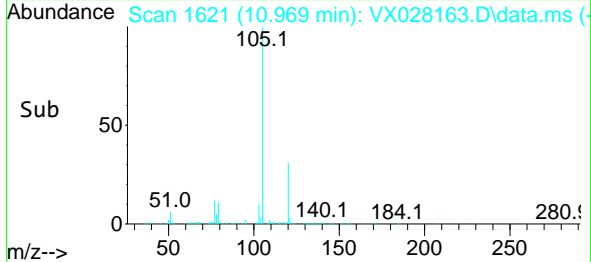
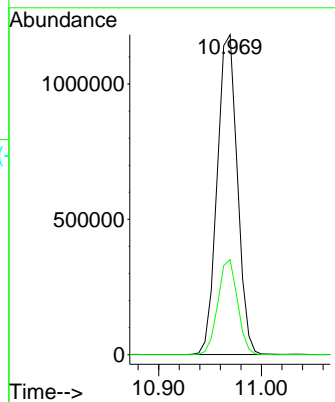
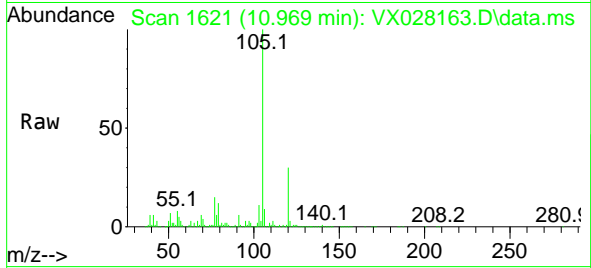




#73
 Isopropylbenzene
 Concen: 50.186 ug/l
 RT: 10.969 min Scan# 1603
 Delta R.T. 0.006 min
 Lab File: VX028163.D
 Acq: 19 Apr 2022 16:29

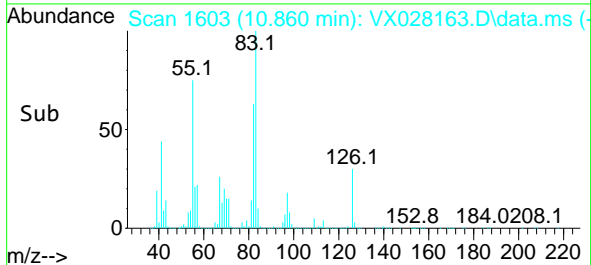
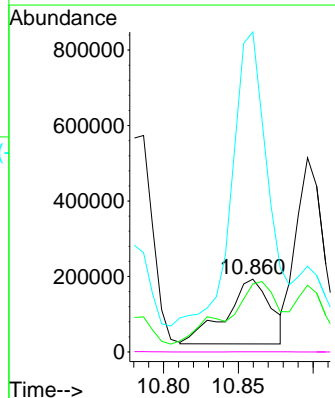
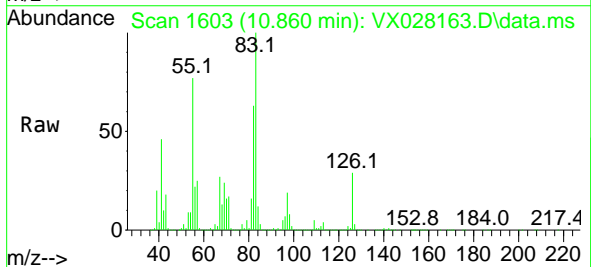
Instrument : MSVOA_X
 ClientSampleId : WC-15-1-5-GRME

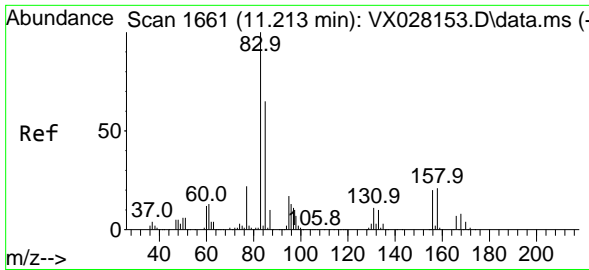
Tgt Ion:105 Resp: 1608878
 Ion Ratio Lower Upper
 105 100
 120 28.9 13.5 40.5



#74
 N-amy1 acetate
 Concen: 32.401 ug/l
 RT: 10.860 min Scan# 1603
 Delta R.T. 0.012 min
 Lab File: VX028163.D
 Acq: 19 Apr 2022 16:29

Tgt Ion: 43 Resp: 359019
 Ion Ratio Lower Upper
 43 100
 70 119.4 42.5 63.7#
 55 359.2 23.1 34.7#
 61 0.3 22.8 34.2#

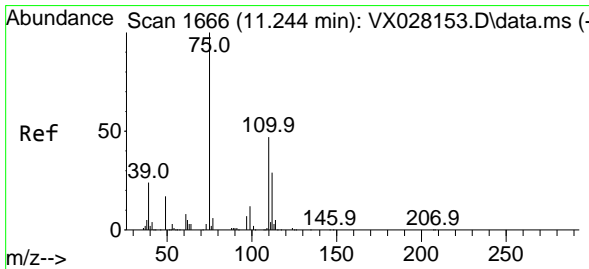
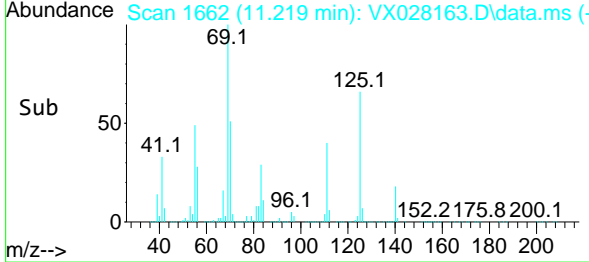
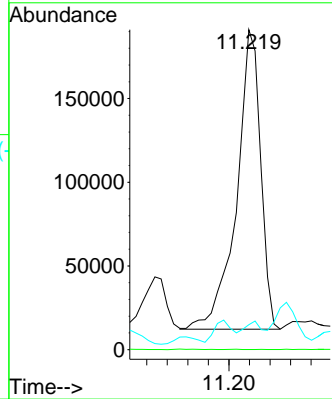
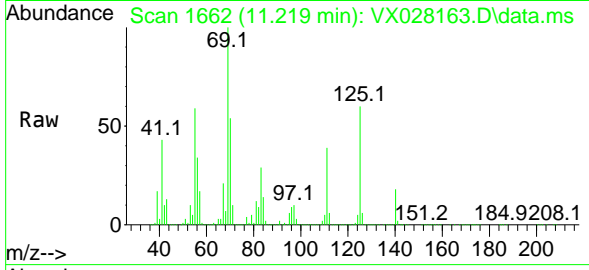




#75
 1,1,2,2-Tetrachloroethane
 Concen: 27.950 ug/l
 RT: 11.219 min Scan# 1662
 Delta R.T. 0.006 min
 Lab File: VX028163.D
 Acq: 19 Apr 2022 16:29

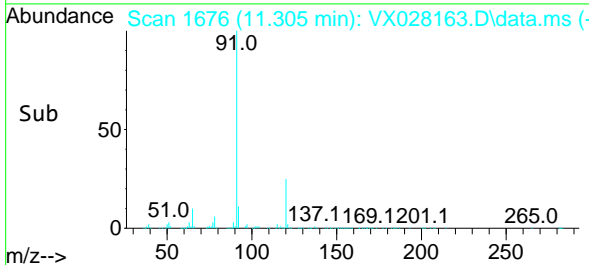
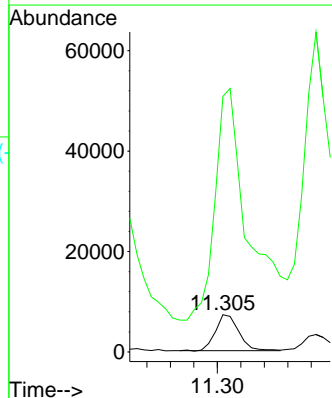
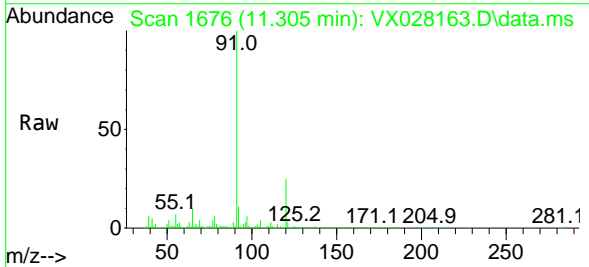
Instrument : MSVOA_X
 ClientSampleId : WC-15-1-5-GRME

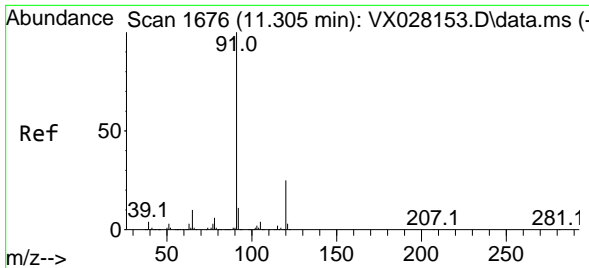
Tgt Ion: 83 Resp: 290765
 Ion Ratio Lower Upper
 83 100
 131 0.0 5.1 15.3#
 85 5.6 32.6 97.7#



#76
 1,2,3-Trichloropropane
 Concen: 1.083 ug/l
 RT: 11.305 min Scan# 1676
 Delta R.T. 0.061 min
 Lab File: VX028163.D
 Acq: 19 Apr 2022 16:29

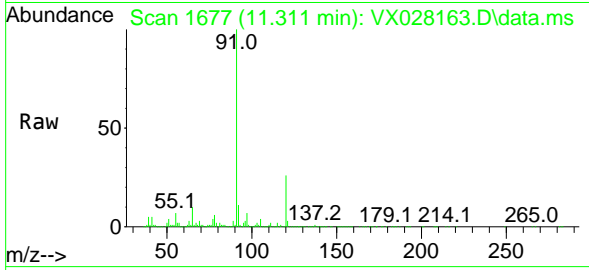
Tgt Ion: 75 Resp: 9937
 Ion Ratio Lower Upper
 75 100
 77 914.4 19.4 58.2#



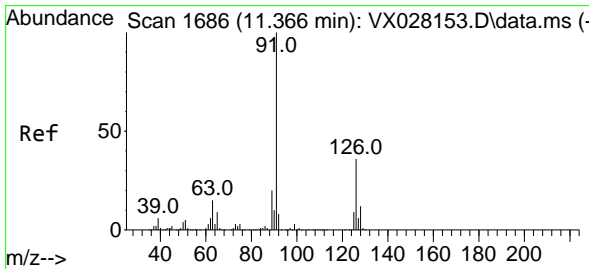
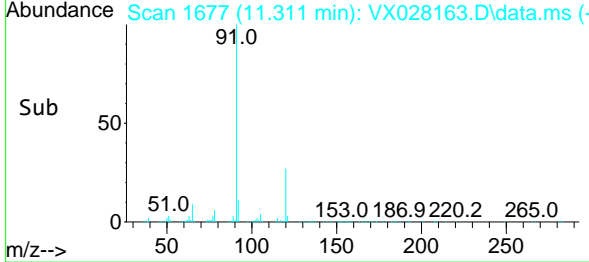
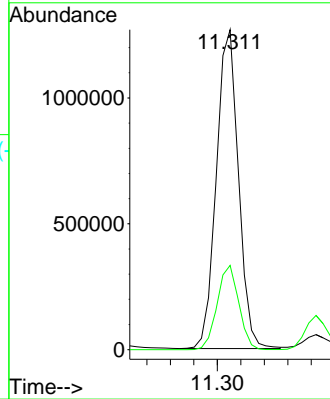


#78
 n-propylbenzene
 Concen: 46.572 ug/l
 RT: 11.311 min Scan# 1677
 Delta R.T. 0.006 min
 Lab File: VX028163.D
 Acq: 19 Apr 2022 16:29

Instrument : MSVOA_X
 ClientSampleId : WC-15-1-5-GRME

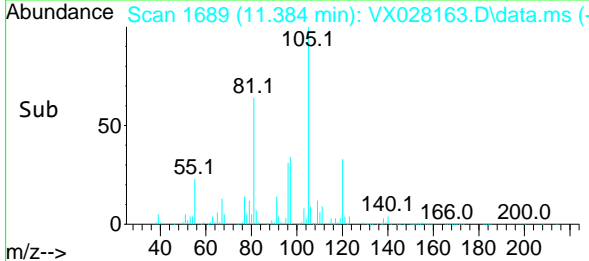
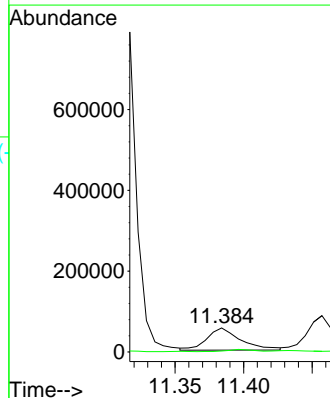
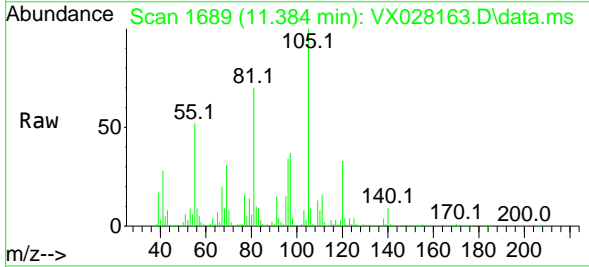


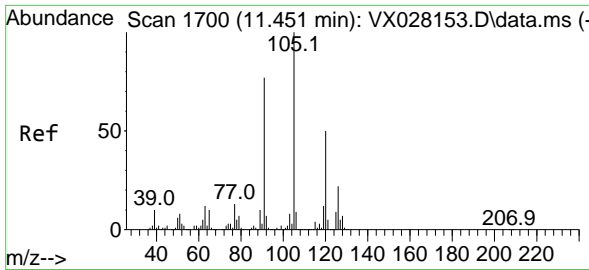
Tgt Ion: 91 Resp: 1655558
 Ion Ratio Lower Upper
 91 100
 120 25.8 11.6 34.8



#79
 2-Chlorotoluene
 Concen: 4.263 ug/l
 RT: 11.384 min Scan# 1689
 Delta R.T. 0.018 min
 Lab File: VX028163.D
 Acq: 19 Apr 2022 16:29

Tgt Ion: 91 Resp: 94221
 Ion Ratio Lower Upper
 91 100
 126 8.0 17.3 51.9#

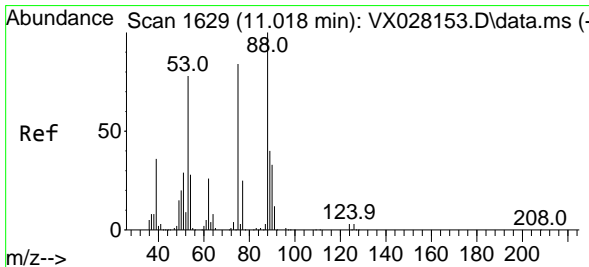
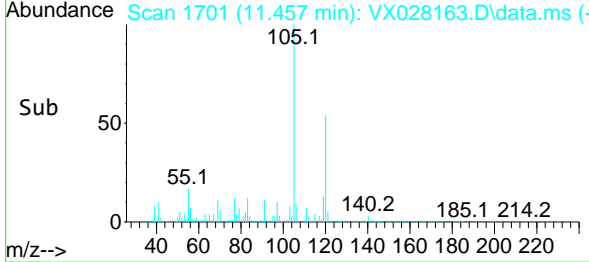
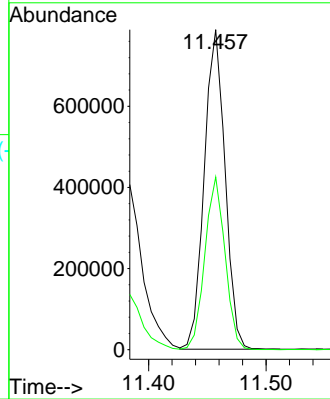
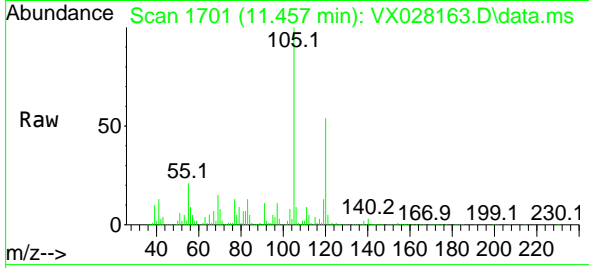




#80
 1,3,5-Trimethylbenzene
 Concen: 35.564 ug/l
 RT: 11.457 min Scan# 1701
 Delta R.T. 0.006 min
 Lab File: VX028163.D
 Acq: 19 Apr 2022 16:29

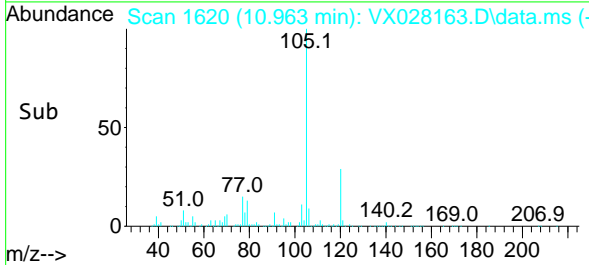
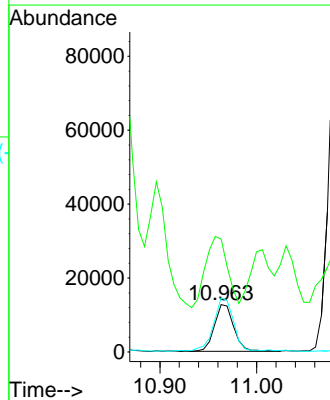
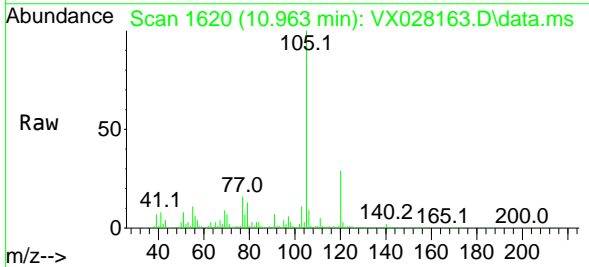
Instrument :
 MSVOA_X
 ClientSampleId :
 WC-15-1-5-GRME

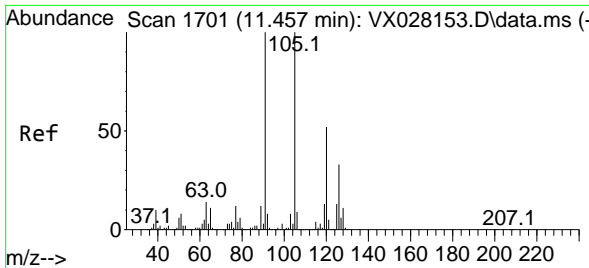
Tgt Ion:105 Resp: 967783
 Ion Ratio Lower Upper
 105 100
 120 52.4 24.3 72.9



#81
 trans-1,4-Dichloro-2-butene
 Concen: 5.682 ug/l
 RT: 10.963 min Scan# 1620
 Delta R.T. -0.055 min
 Lab File: VX028163.D
 Acq: 19 Apr 2022 16:29

Tgt Ion: 75 Resp: 17550
 Ion Ratio Lower Upper
 75 100
 53 244.0 69.0 103.4#
 89 117.3 37.0 55.6#

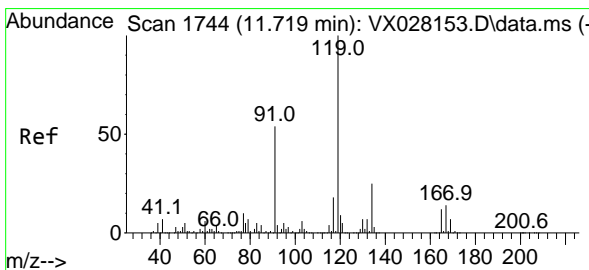
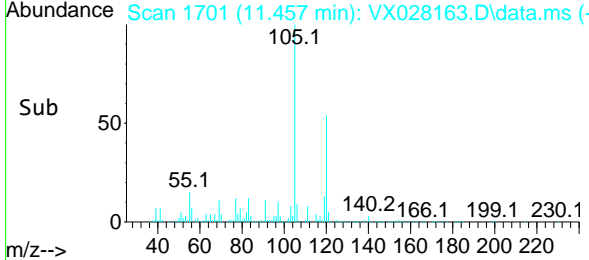
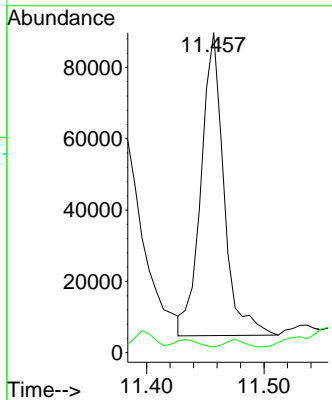
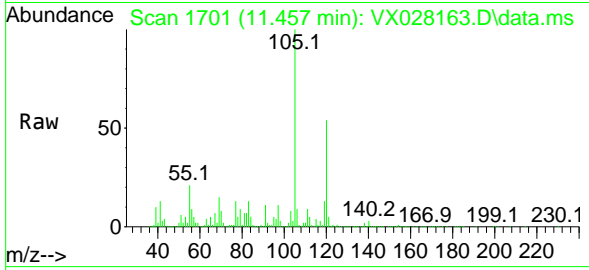




#82
 4-Chlorotoluene
 Concen: 4.501 ug/l
 RT: 11.457 min Scan# 1701
 Delta R.T. 0.000 min
 Lab File: VX028163.D
 Acq: 19 Apr 2022 16:29

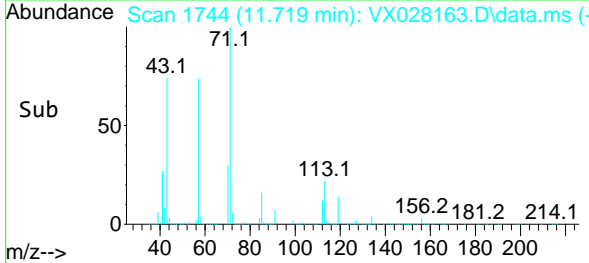
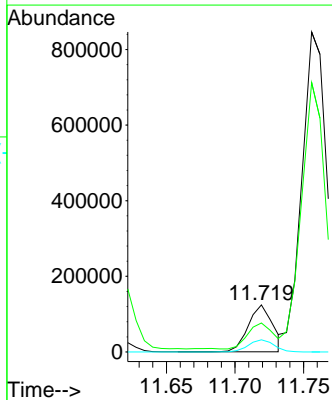
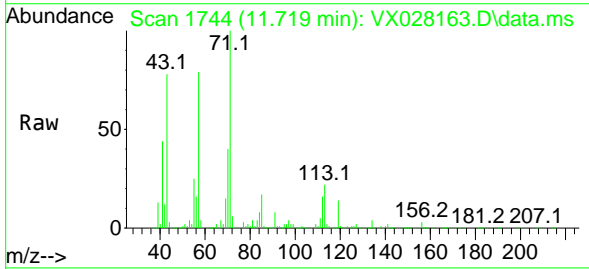
Instrument : MSVOA_X
 ClientSampleId : WC-15-1-5-GRME

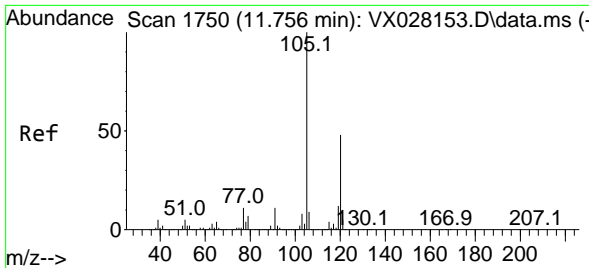
Tgt Ion: 91 Resp: 114599
 Ion Ratio Lower Upper
 91 100
 126 1.9 14.9 44.5#



#83
 tert-Butylbenzene
 Concen: 5.504 ug/l
 RT: 11.719 min Scan# 1744
 Delta R.T. 0.000 min
 Lab File: VX028163.D
 Acq: 19 Apr 2022 16:29

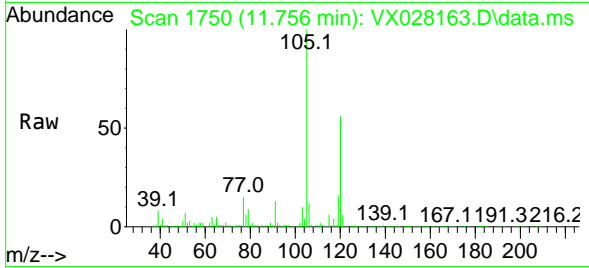
Tgt Ion: 119 Resp: 152938
 Ion Ratio Lower Upper
 119 100
 91 56.7 26.9 80.6
 134 27.2 11.4 34.2



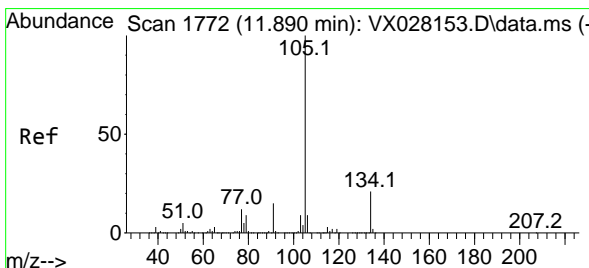
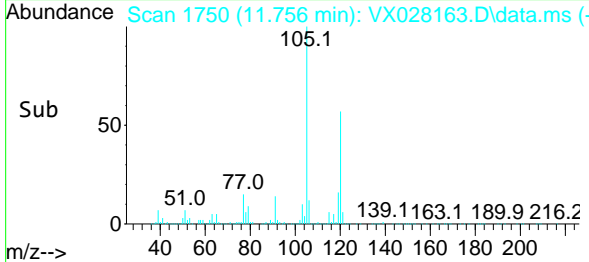
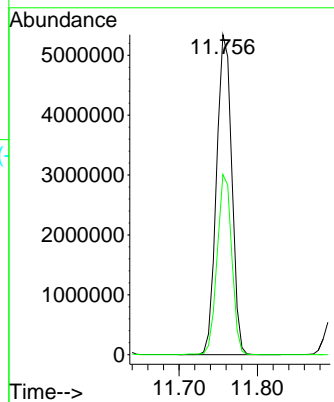


#84
 1,2,4-Trimethylbenzene
 Concen: 267.398 ug/l
 RT: 11.756 min Scan# 1750
 Delta R.T. -0.000 min
 Lab File: VX028163.D
 Acq: 19 Apr 2022 16:29

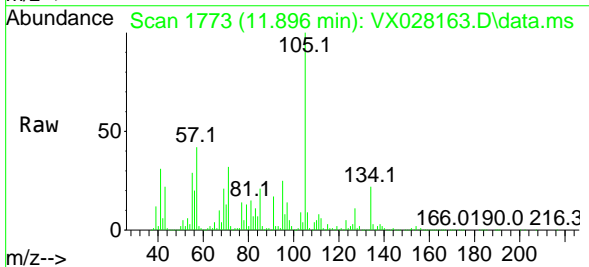
Instrument : MSVOA_X
 ClientSampleId : WC-15-1-5-GRME



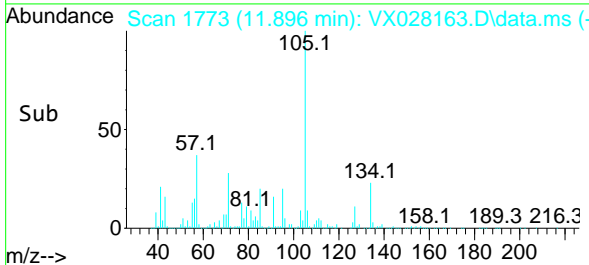
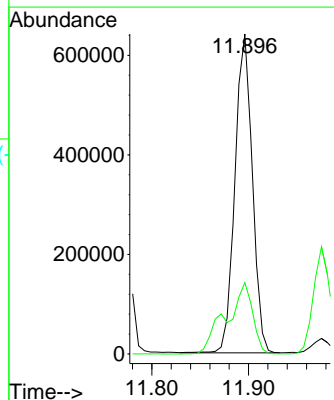
Tgt Ion:105 Resp: 7233311
 Ion Ratio Lower Upper
 105 100
 120 53.9 22.6 67.8

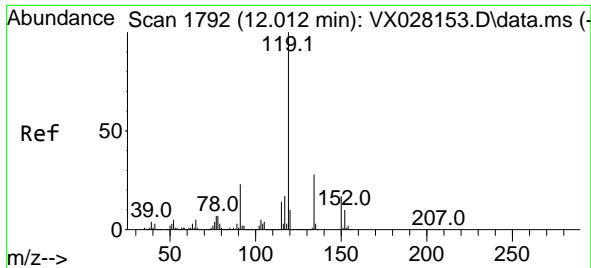


#85
 sec-Butylbenzene
 Concen: 23.914 ug/l
 RT: 11.896 min Scan# 1773
 Delta R.T. 0.006 min
 Lab File: VX028163.D
 Acq: 19 Apr 2022 16:29



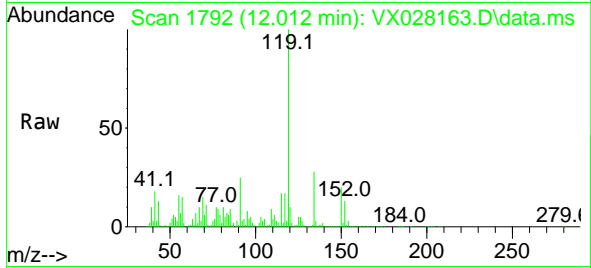
Tgt Ion:105 Resp: 801712
 Ion Ratio Lower Upper
 105 100
 134 34.2 10.2 30.4#





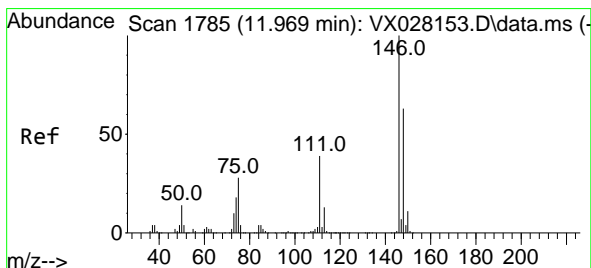
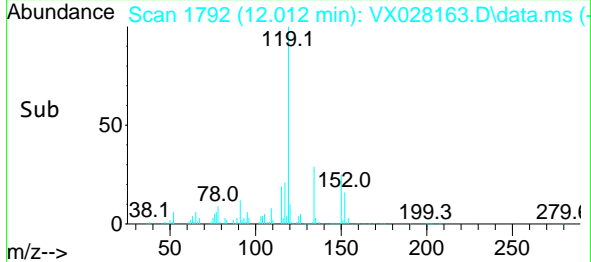
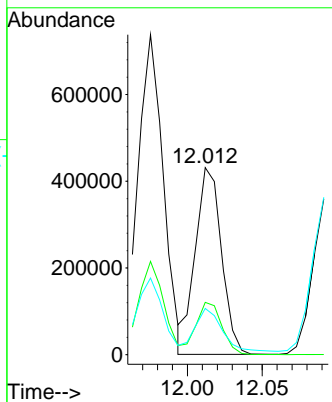
#86
 p-Isopropyltoluene
 Concen: 18.153 ug/l
 RT: 12.012 min Scan# 1792
 Delta R.T. -0.000 min
 Lab File: VX028163.D
 Acq: 19 Apr 2022 16:29

Instrument : MSVOA_X
 ClientSampleId : WC-15-1-5-GRME



Tgt Ion:119 Resp: 525023

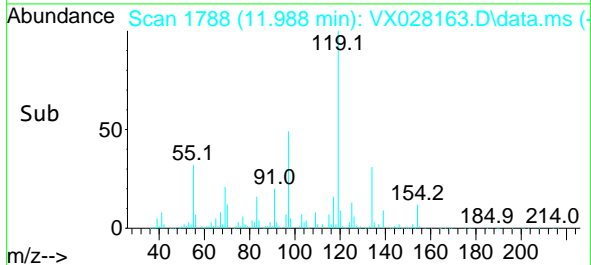
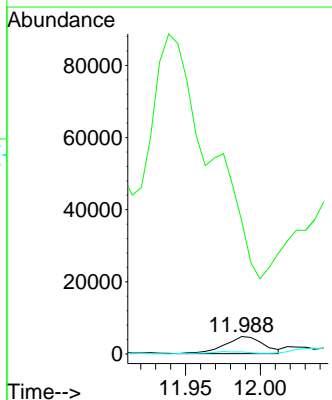
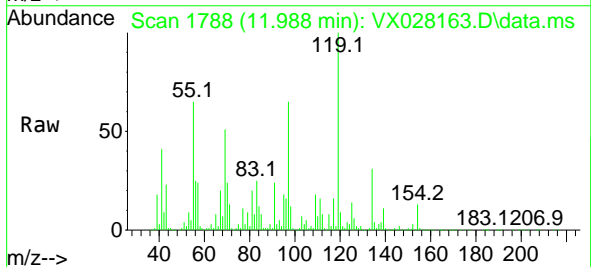
| Ion | Ratio | Lower | Upper |
|-----|-------|-------|-------|
| 119 | 100 | | |
| 134 | 28.1 | 13.0 | 39.0 |
| 91 | 23.4 | 11.3 | 33.9 |

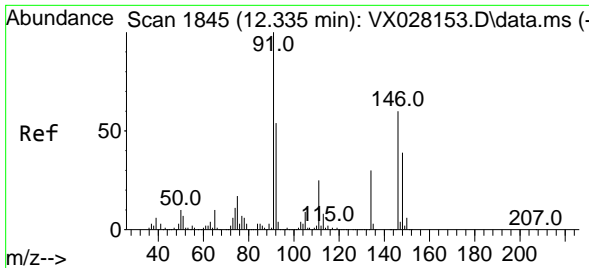


#87
 1,3-Dichlorobenzene
 Concen: 0.542 ug/l
 RT: 11.988 min Scan# 1788
 Delta R.T. 0.019 min
 Lab File: VX028163.D
 Acq: 19 Apr 2022 16:29

Tgt Ion:146 Resp: 8504

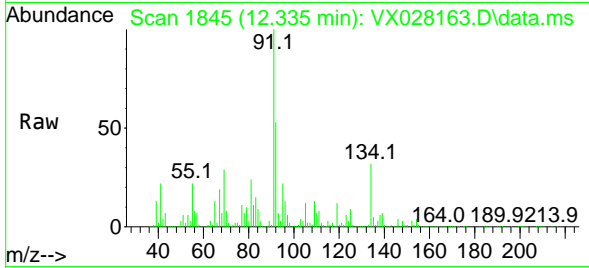
| Ion | Ratio | Lower | Upper |
|-----|-------|-------|-------|
| 146 | 100 | | |
| 111 | 0.0 | 19.7 | 59.1# |
| 148 | 14.8 | 31.6 | 94.7# |





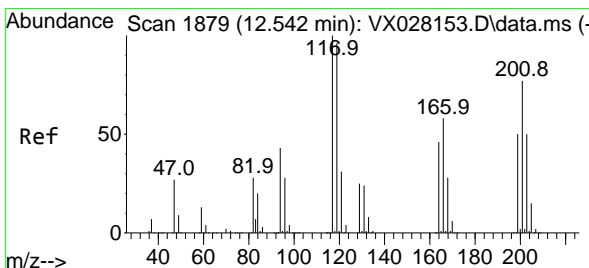
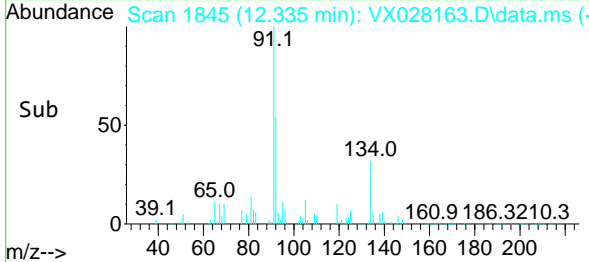
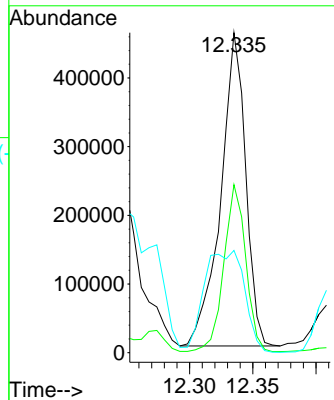
#89
 n-Butylbenzene
 Concen: 26.360 ug/l
 RT: 12.335 min Scan# 1845
 Delta R.T. 0.000 min
 Lab File: VX028163.D
 Acq: 19 Apr 2022 16:29

Instrument : MSVOA_X
 ClientSampleId : WC-15-1-5-GRME



Tgt Ion: 91 Resp: 626010

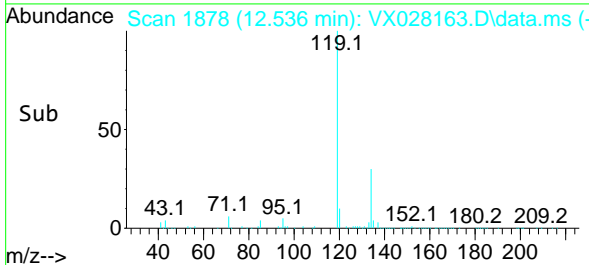
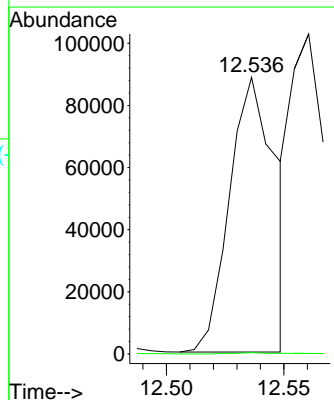
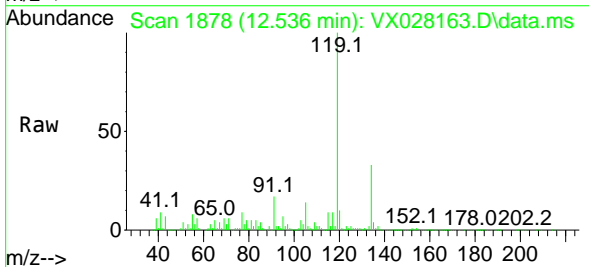
| Ion | Ratio | Lower | Upper |
|-----|-------|-------|-------|
| 91 | 100 | | |
| 92 | 46.6 | 27.8 | 83.3 |
| 134 | 52.3 | 13.3 | 39.8 |

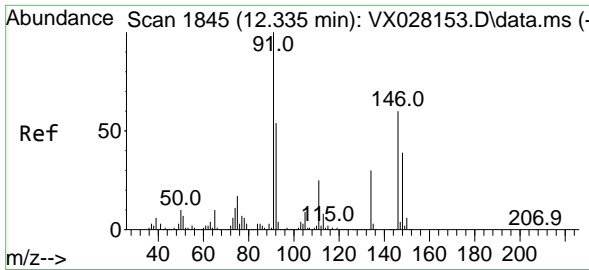


#90
 Hexachloroethane
 Concen: 24.067 ug/l
 RT: 12.536 min Scan# 1878
 Delta R.T. -0.006 min
 Lab File: VX028163.D
 Acq: 19 Apr 2022 16:29

Tgt Ion: 117 Resp: 120164

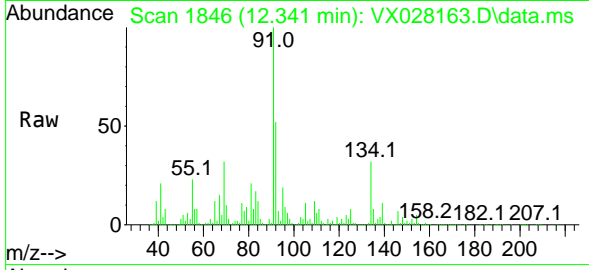
| Ion | Ratio | Lower | Upper |
|-----|-------|-------|-------|
| 117 | 100 | | |
| 201 | 0.5 | 39.5 | 118.5 |



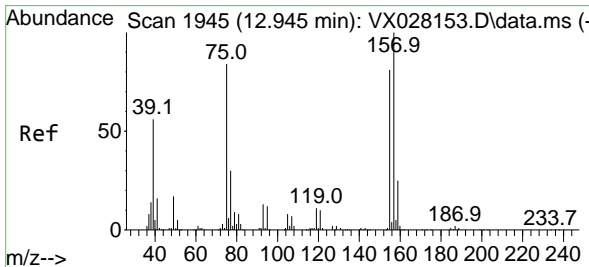
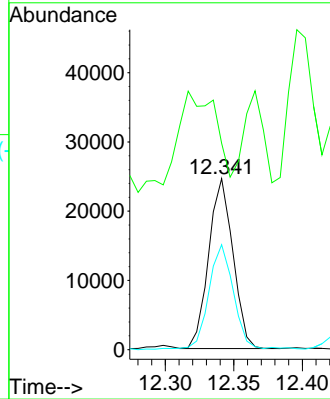
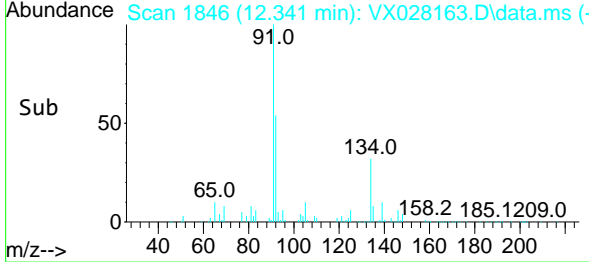


#91
 1,2-Dichlorobenzene
 Concen: 1.938 ug/l
 RT: 12.341 min Scan# 1845
 Delta R.T. 0.006 min
 Lab File: VX028163.D
 Acq: 19 Apr 2022 16:29

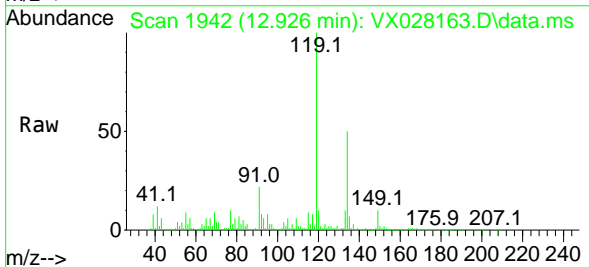
Instrument : MSVOA_X
 ClientSampleId : WC-15-1-5-GRME



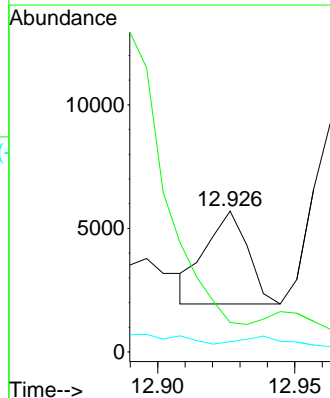
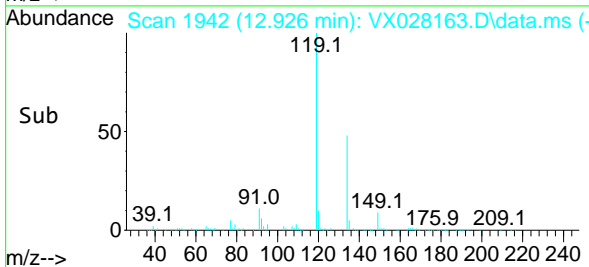
Tgt Ion:146 Resp: 30208
 Ion Ratio Lower Upper
 146 100
 111 0.0 21.0 63.0#
 148 64.6 32.6 97.7

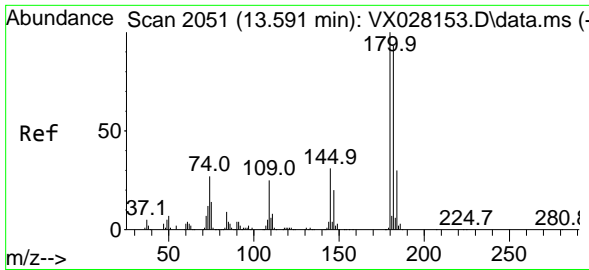


#92
 1,2-Dibromo-3-Chloropropane
 Concen: 1.739 ug/l
 RT: 12.926 min Scan# 1942
 Delta R.T. -0.019 min
 Lab File: VX028163.D
 Acq: 19 Apr 2022 16:29



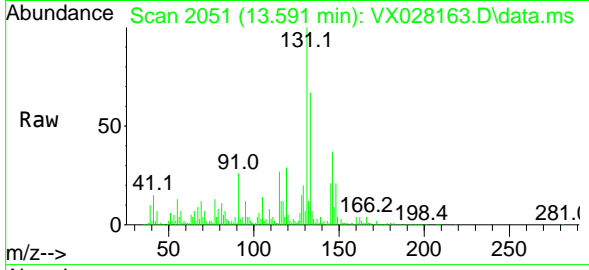
Tgt Ion: 75 Resp: 4023
 Ion Ratio Lower Upper
 75 100
 155 19.2 47.0 141.2#
 157 12.9 57.9 173.6#



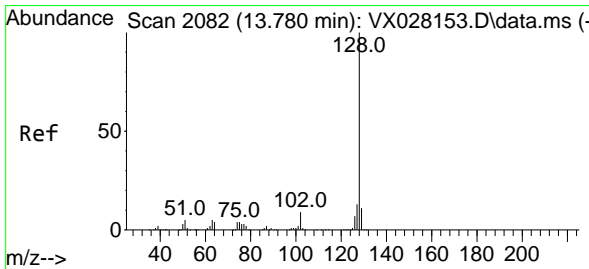
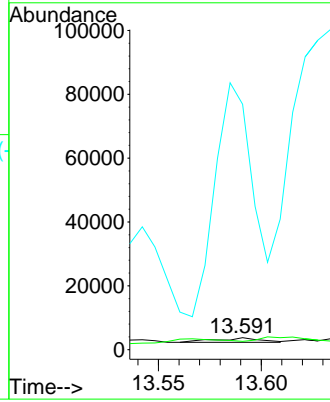
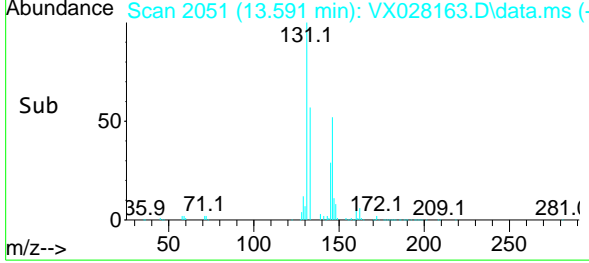


#93
 1,2,4-Trichlorobenzene
 Concen: 0.230 ug/l
 RT: 13.591 min Scan# 2051
 Delta R.T. -0.000 min
 Lab File: VX028163.D
 Acq: 19 Apr 2022 16:29

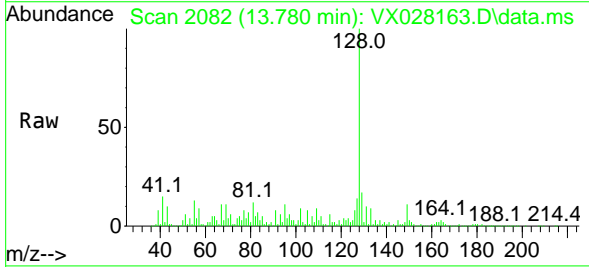
Instrument : MSVOA_X
 ClientSampleId : WC-15-1-5-GRME



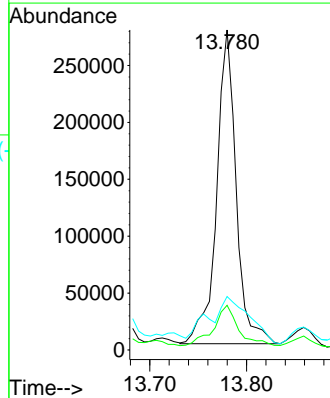
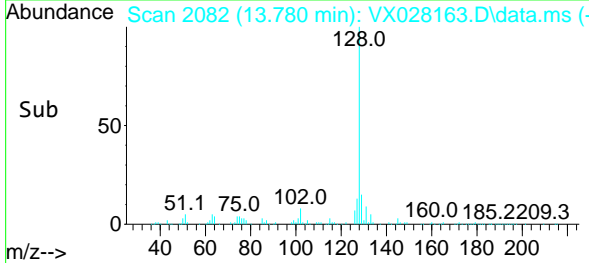
Tgt Ion:180 Resp: 2132
 Ion Ratio Lower Upper
 180 100
 182 129.7 47.7 143.1
 145 5129.4 15.2 45.5#

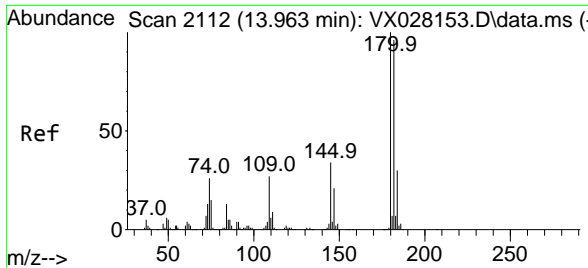


#95
 Naphthalene
 Concen: 12.551 ug/l
 RT: 13.780 min Scan# 2082
 Delta R.T. -0.000 min
 Lab File: VX028163.D
 Acq: 19 Apr 2022 16:29



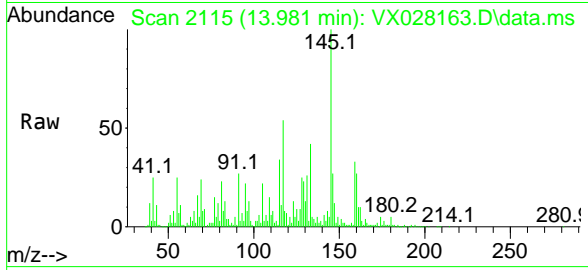
Tgt Ion:128 Resp: 387562
 Ion Ratio Lower Upper
 128 100
 127 16.1 10.2 15.4#
 129 22.0 8.7 13.1#





#96
 1,2,3-Trichlorobenzene
 Concen: 0.946 ug/l
 RT: 13.981 min Scan# 21
 Delta R.T. 0.018 min
 Lab File: VX028163.D
 Acq: 19 Apr 2022 16:29

Instrument :
 MSVOA_X
 ClientSampleId :
 WC-15-1-5-GRME



Tgt Ion:180 Resp: 8610
 Ion Ratio Lower Upper
 180 100
 182 18.5 50.0 149.8#
 145 3020.0 16.2 48.5#

