

Data Path : Z:\voasrv\HPCHEM1\MSVOA\_X\Data\VX041922\  
 Data File : VX028182.D  
 Acq On : 20 Apr 2022 00:22  
 Operator : JC/MD  
 Sample : PB144164ZHE#12  
 Misc : 5.0mL/MSVOA\_X/WATER  
 ALS Vial : 37 Sample Multiplier: 1

Instrument :  
 MSVOA\_X  
 ClientSampleId :  
 PB144164ZHE#12

Quant Time: Apr 20 08:21:17 2022  
 Quant Method : Z:\voasrv\HPCHEM1\MSVOA\_X\Method\82X041922W.M  
 Quant Title : SW846 8260  
 QLast Update : Tue Apr 19 13:38:04 2022  
 Response via : Initial Calibration

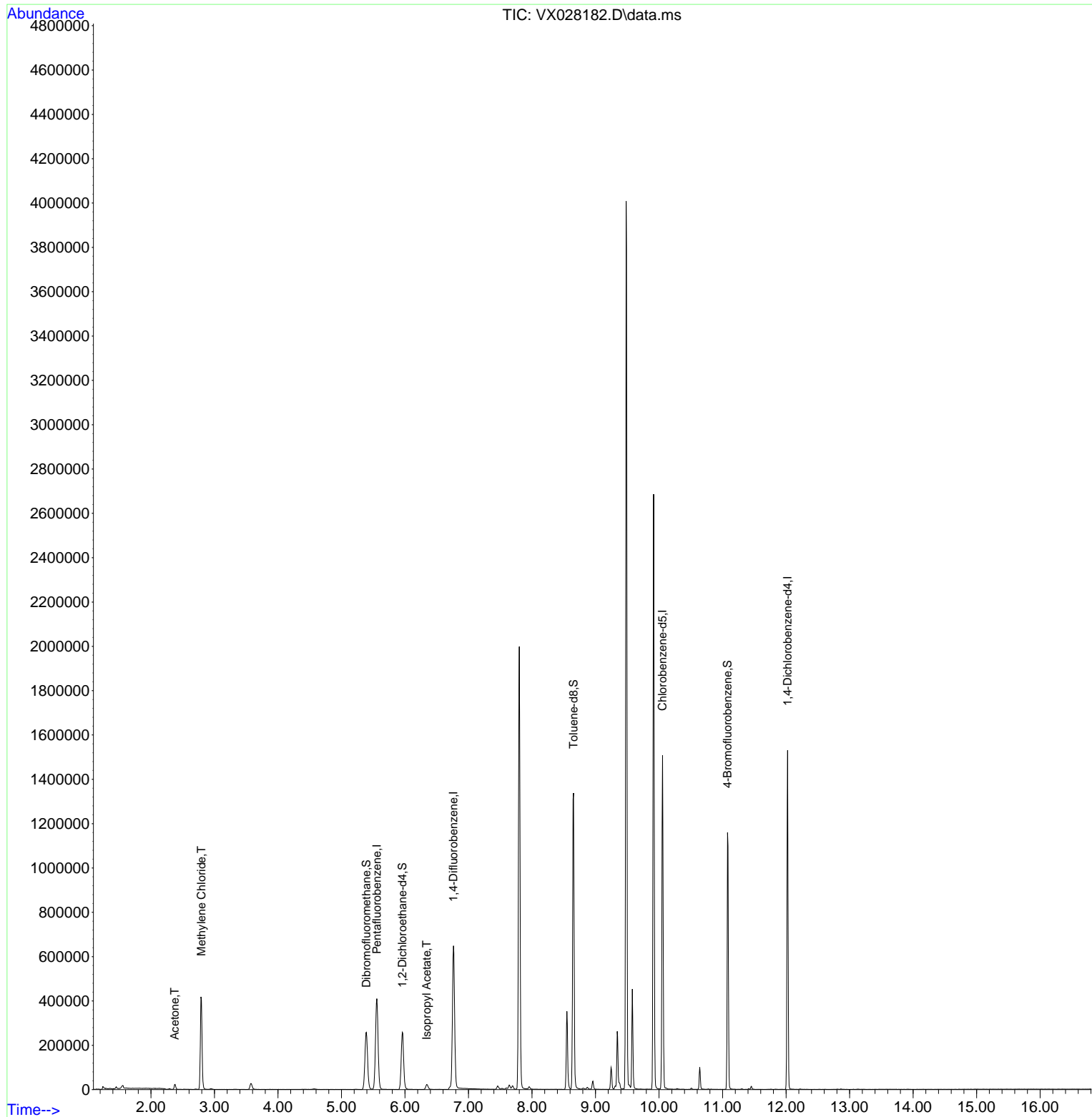
Compound	R.T.	QIon	Response	Conc	Units	Dev(Min)
-----						
Internal Standards						
1) Pentafluorobenzene	5.556	168	396330	50.000	ug/l	0.00
34) 1,4-Difluorobenzene	6.763	114	681802	50.000	ug/l	0.00
63) Chlorobenzene-d5	10.055	117	686313	50.000	ug/l	0.00
72) 1,4-Dichlorobenzene-d4	12.024	152	309901	50.000	ug/l	0.00
System Monitoring Compounds						
33) 1,2-Dichloroethane-d4	5.958	65	244712	47.354	ug/l	0.00
Spiked Amount	50.000	Range	61 - 141	Recovery	=	94.700%
35) Dibromofluoromethane	5.391	113	224295	46.910	ug/l	0.00
Spiked Amount	50.000	Range	69 - 133	Recovery	=	93.820%
50) Toluene-d8	8.653	98	829246	45.155	ug/l	0.00
Spiked Amount	50.000	Range	65 - 126	Recovery	=	90.300%
62) 4-Bromofluorobenzene	11.079	95	308227	43.896	ug/l	0.00
Spiked Amount	50.000	Range	58 - 135	Recovery	=	87.800%
Target Compounds						
						Qvalue
16) Acetone	2.373	43	24034	13.909	ug/l	91
20) Methylene Chloride	2.794	84	199278	51.972	ug/l	98
43) Isopropyl Acetate	6.342	43	31169	3.026	ug/l	96
-----						

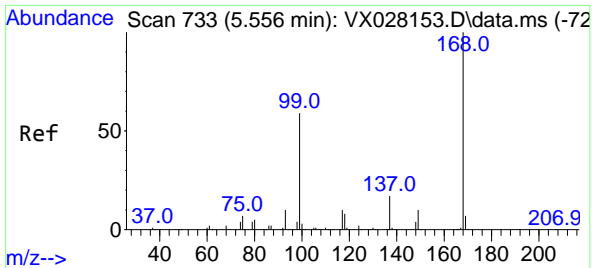
(#) = qualifier out of range (m) = manual integration (+) = signals summed

Data Path : Z:\voasrv\HPCHEM1\MSVOA\_X\Data\VX041922\  
Data File : VX028182.D  
Acq On : 20 Apr 2022 00:22  
Operator : JC/MD  
Sample : PB144164ZHE#12  
Misc : 5.0mL/MSVOA\_X/WATER  
ALS Vial : 37 Sample Multiplier: 1

Instrument :  
MSVOA\_X  
ClientSampleId :  
PB144164ZHE#12

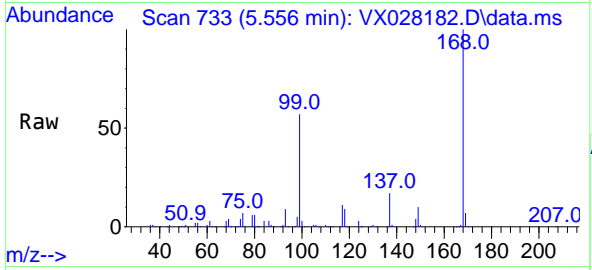
Quant Time: Apr 20 08:21:17 2022  
Quant Method : Z:\voasrv\HPCHEM1\MSVOA\_X\Method\82X041922W.M  
Quant Title : SW846 8260  
QLast Update : Tue Apr 19 13:38:04 2022  
Response via : Initial Calibration



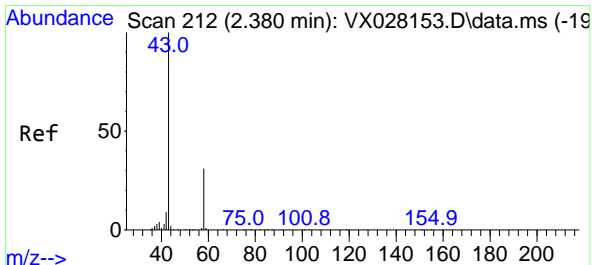
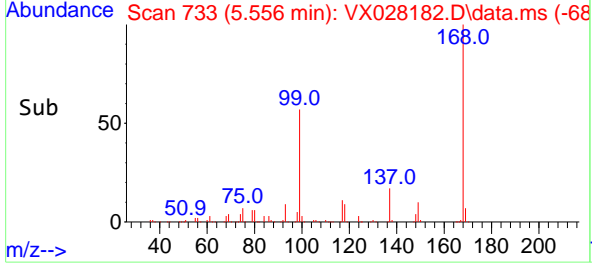
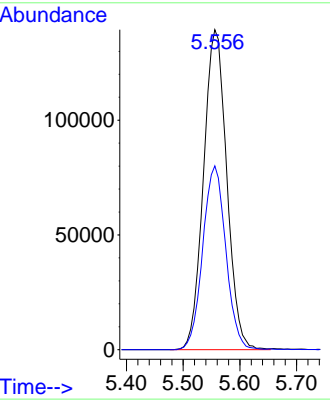


#1  
 Pentafluorobenzene  
 Concen: 50.000 ug/l  
 RT: 5.556 min Scan# 71  
 Delta R.T. -0.000 min  
 Lab File: VX028182.D  
 Acq: 20 Apr 2022 00:22

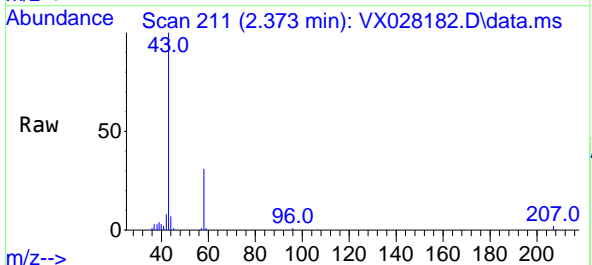
Instrument : MSVOA\_X  
 ClientSampleId : PB144164ZHE#12



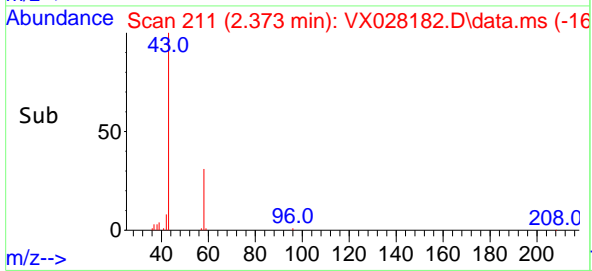
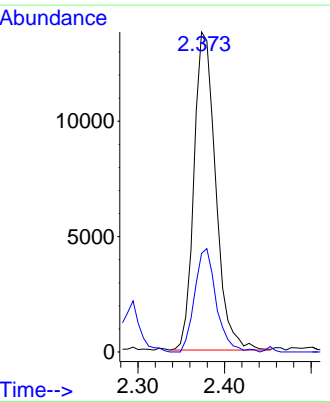
Tgt Ion:168 Resp: 396330  
 Ion Ratio Lower Upper  
 168 100  
 99 57.4 41.7 62.5

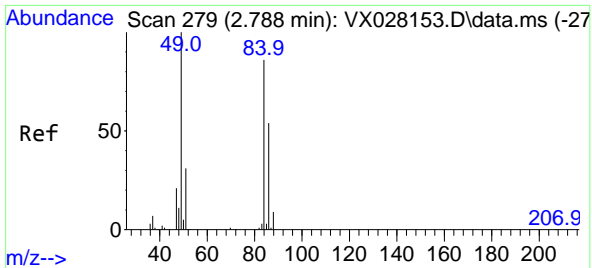


#16  
 Acetone  
 Concen: 13.909 ug/l  
 RT: 2.373 min Scan# 211  
 Delta R.T. -0.007 min  
 Lab File: VX028182.D  
 Acq: 20 Apr 2022 00:22



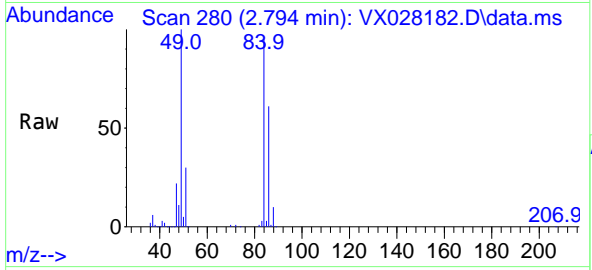
Tgt Ion: 43 Resp: 24034  
 Ion Ratio Lower Upper  
 43 100  
 58 31.0 28.8 43.2



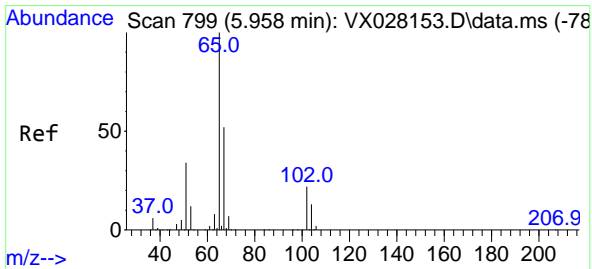
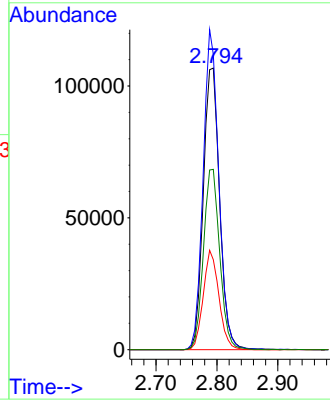
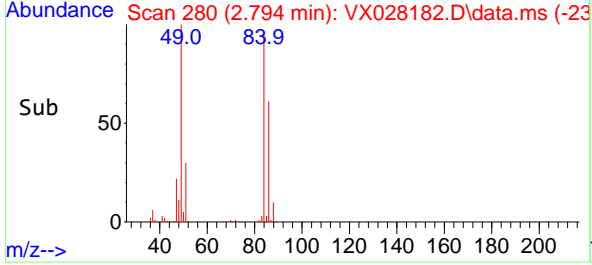


#20  
 Methylene Chloride  
 Concen: 51.972 ug/l  
 RT: 2.794 min Scan# 21  
 Delta R.T. 0.006 min  
 Lab File: VX028182.D  
 Acq: 20 Apr 2022 00:22

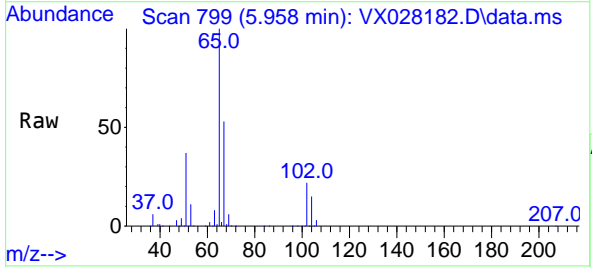
Instrument :  
 MSVOA\_X  
 ClientSampleId :  
 PB144164ZHE#12



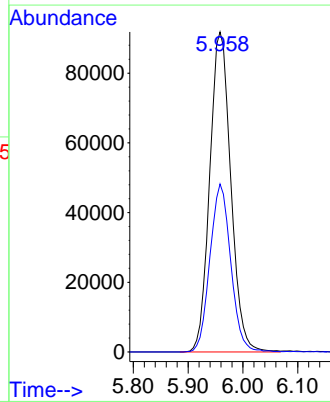
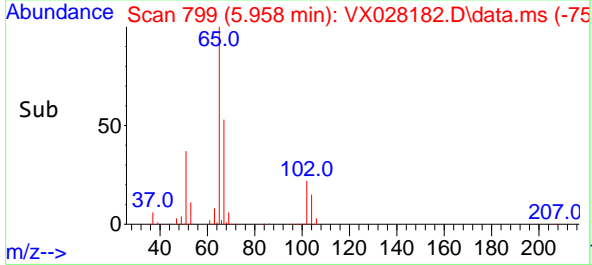
Tgt Ion: 84 Resp: 199278  
 Ion Ratio Lower Upper  
 84 100  
 49 104.9 85.5 128.3  
 51 31.9 26.6 39.8  
 86 64.1 51.5 77.3

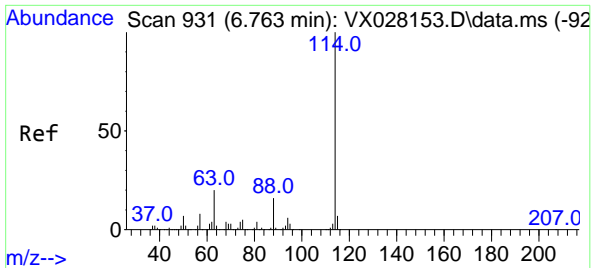


#33  
 1,2-Dichloroethane-d4  
 Concen: 47.354 ug/l  
 RT: 5.958 min Scan# 799  
 Delta R.T. 0.000 min  
 Lab File: VX028182.D  
 Acq: 20 Apr 2022 00:22



Tgt Ion: 65 Resp: 244712  
 Ion Ratio Lower Upper  
 65 100  
 67 51.9 0.0 107.4



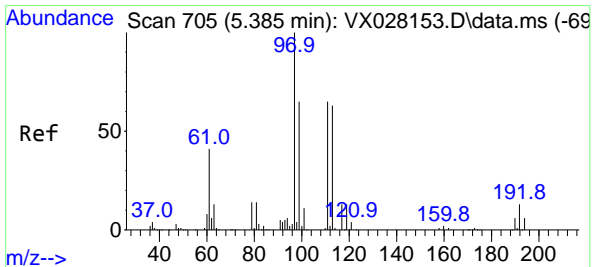
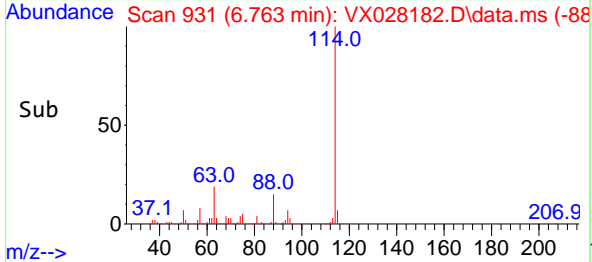
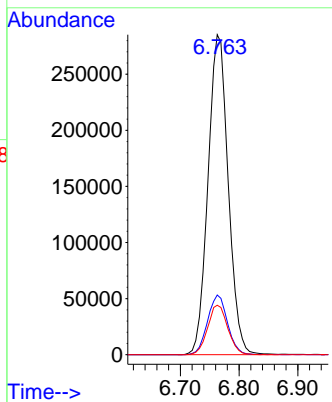
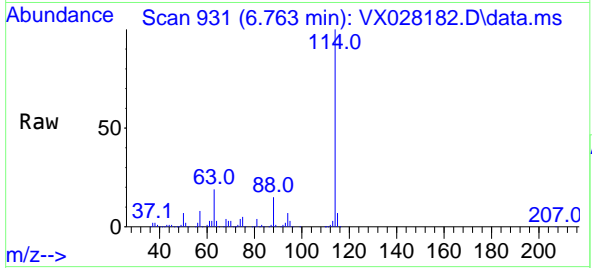


#34  
 1,4-Difluorobenzene  
 Concen: 50.000 ug/l  
 RT: 6.763 min Scan# 91  
 Delta R.T. -0.000 min  
 Lab File: VX028182.D  
 Acq: 20 Apr 2022 00:22

Instrument : MSVOA\_X  
 ClientSampleId : PB144164ZHE#12

Tgt Ion:114 Resp: 681802

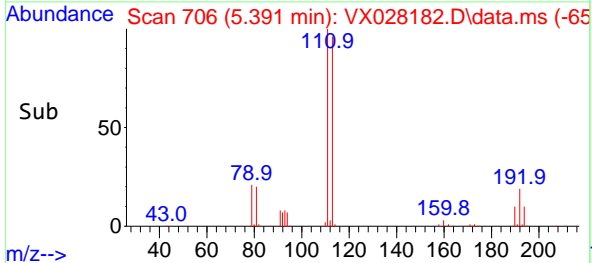
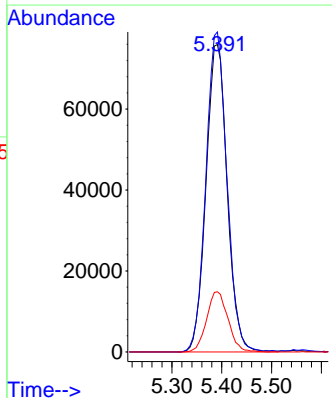
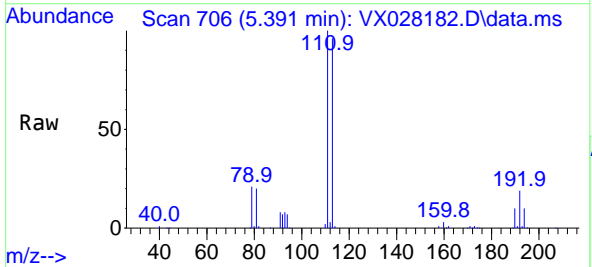
Ion	Ratio	Lower	Upper
114	100		
63	18.6	0.0	36.8
88	15.5	0.0	32.4

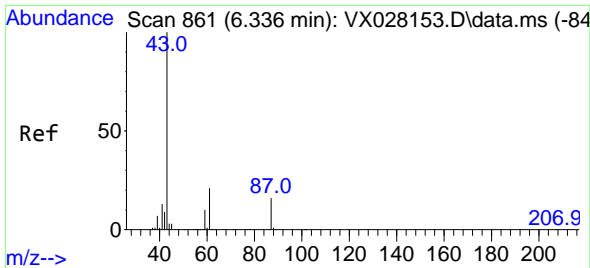


#35  
 Dibromofluoromethane  
 Concen: 46.910 ug/l  
 RT: 5.391 min Scan# 706  
 Delta R.T. 0.006 min  
 Lab File: VX028182.D  
 Acq: 20 Apr 2022 00:22

Tgt Ion:113 Resp: 224295

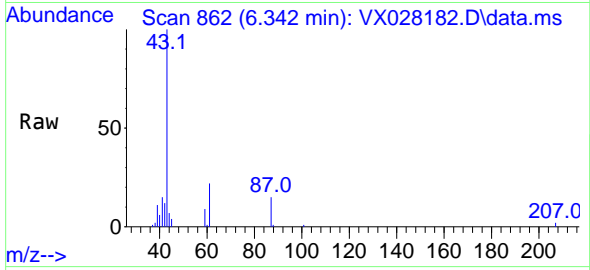
Ion	Ratio	Lower	Upper
113	100		
111	103.3	82.8	124.2
192	19.7	16.9	25.3



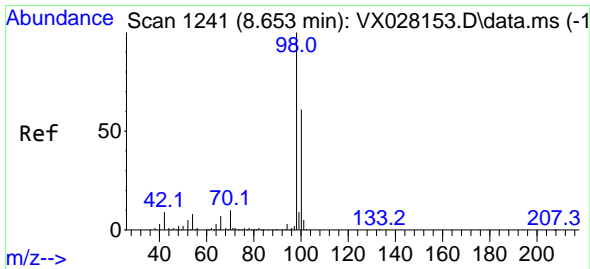
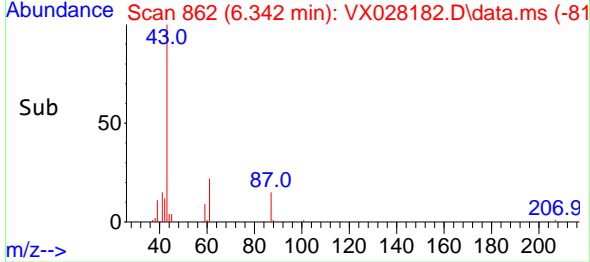
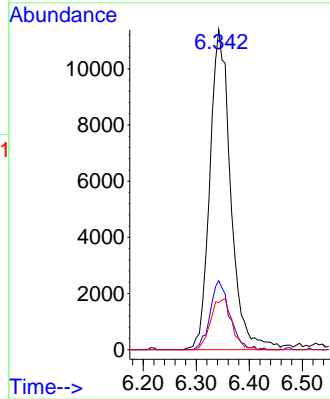


#43  
 Isopropyl Acetate  
 Concen: 3.026 ug/l  
 RT: 6.342 min Scan# 80  
 Delta R.T. 0.006 min  
 Lab File: VX028182.D  
 Acq: 20 Apr 2022 00:22

Instrument :  
 MSVOA\_X  
 ClientSampleId :  
 PB144164ZHE#12

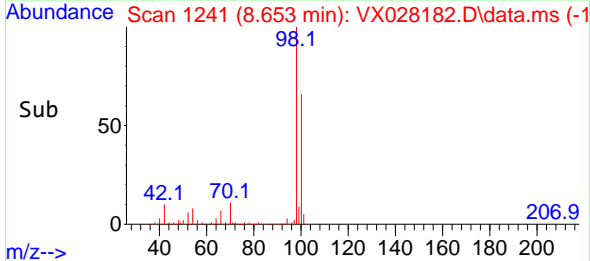
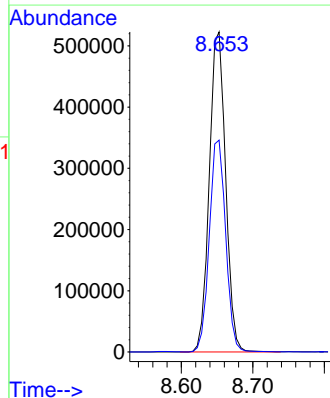
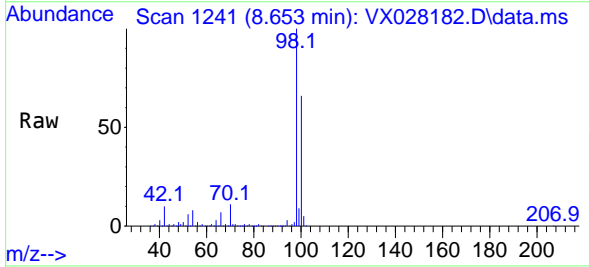


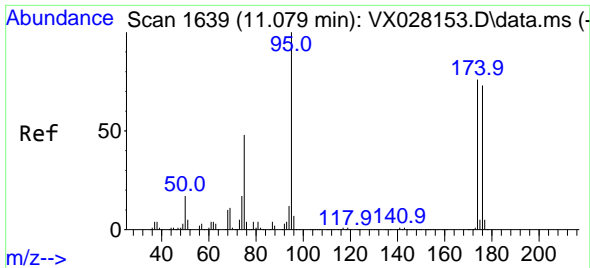
Tgt Ion: 43 Resp: 31169  
 Ion Ratio Lower Upper  
 43 100  
 61 20.1 18.5 27.7  
 87 16.2 13.0 19.6



#50  
 Toluene-d8  
 Concen: 45.155 ug/l  
 RT: 8.653 min Scan# 1241  
 Delta R.T. -0.000 min  
 Lab File: VX028182.D  
 Acq: 20 Apr 2022 00:22

Tgt Ion: 98 Resp: 829246  
 Ion Ratio Lower Upper  
 98 100  
 100 66.5 52.6 78.8



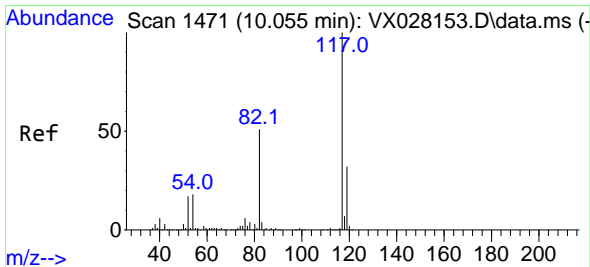
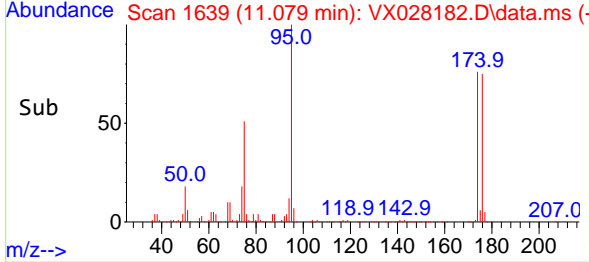
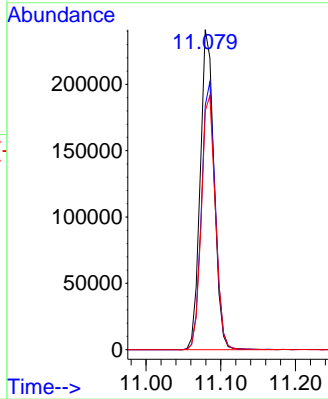
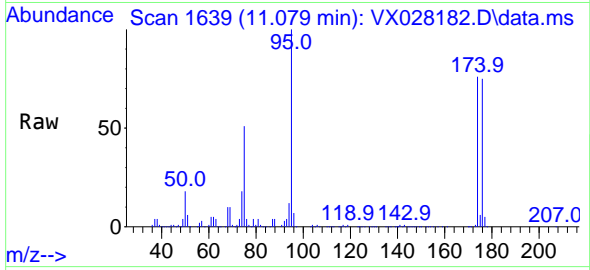


#62  
 4-Bromofluorobenzene  
 Concen: 43.896 ug/l  
 RT: 11.079 min Scan# 1639  
 Delta R.T. 0.000 min  
 Lab File: VX028182.D  
 Acq: 20 Apr 2022 00:22

Instrument : MSVOA\_X  
 ClientSampleId : PB144164ZHE#12

Tgt Ion: 95 Resp: 308227

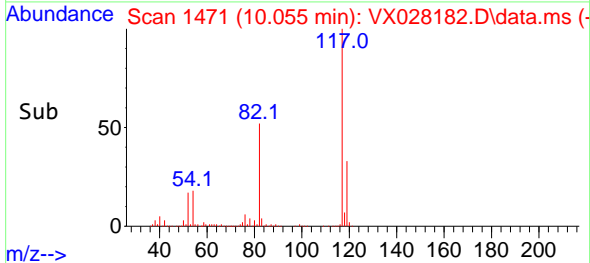
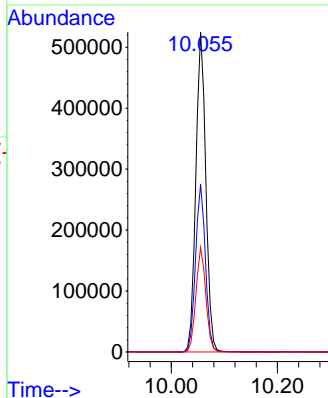
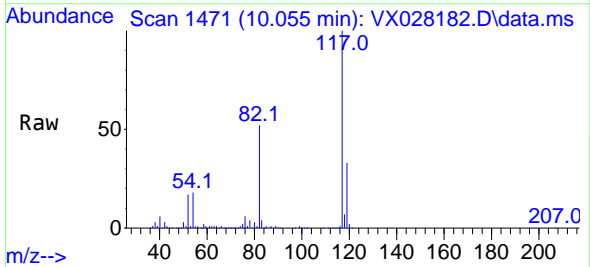
Ion	Ratio	Lower	Upper
95	100		
174	84.1	0.0	163.0
176	80.8	0.0	155.0

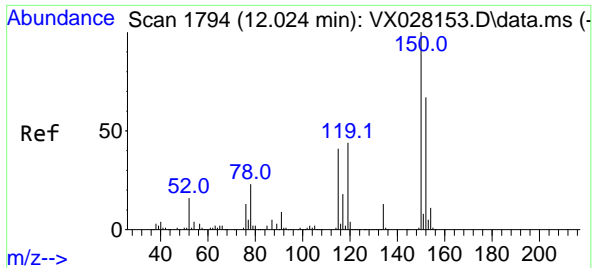


#63  
 Chlorobenzene-d5  
 Concen: 50.000 ug/l  
 RT: 10.055 min Scan# 1471  
 Delta R.T. 0.000 min  
 Lab File: VX028182.D  
 Acq: 20 Apr 2022 00:22

Tgt Ion: 117 Resp: 686313

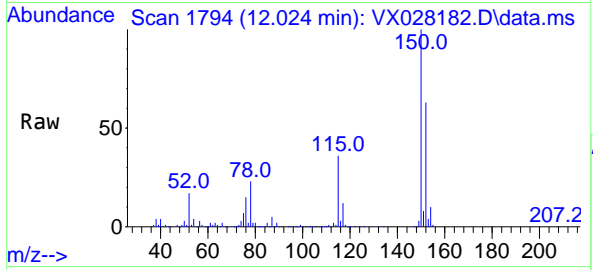
Ion	Ratio	Lower	Upper
117	100		
82	52.4	41.8	62.8
119	32.7	24.8	37.2





#72  
 1,4-Dichlorobenzene-d4  
 Concen: 50.000 ug/l  
 RT: 12.024 min Scan# 11  
 Delta R.T. 0.000 min  
 Lab File: VX028182.D  
 Acq: 20 Apr 2022 00:22

Instrument :  
 MSVOA\_X  
 ClientSampleId :  
 PB144164ZHE#12



Tgt Ion:152 Resp: 309901

Ion	Ratio	Lower	Upper
152	100		
115	59.0	37.5	112.7
150	157.5	0.0	338.2

