

Data Path : Z:\voasrv\HPCHEM1\MSVOA\_X\Data\VX041923\  
 Data File : VX035181.D  
 Acq On : 19 Apr 2023 19:43  
 Operator : JC/MD  
 Sample : 02378-04  
 Misc : 5.0mL/MSVOA\_X/WATER  
 ALS Vial : 27 Sample Multiplier: 1

Instrument :  
 MSVOA\_X  
 ClientSampleId :

Quant Time: Apr 20 02:59:09 2023  
 Quant Method : Z:\voasrv\HPCHEM1\MSVOA\_X\Method\SFAMXML041823WMA.M  
 Quant Title : VOC Analysis  
 QLast Update : Thu Apr 20 02:36:32 2023  
 Response via : Initial Calibration

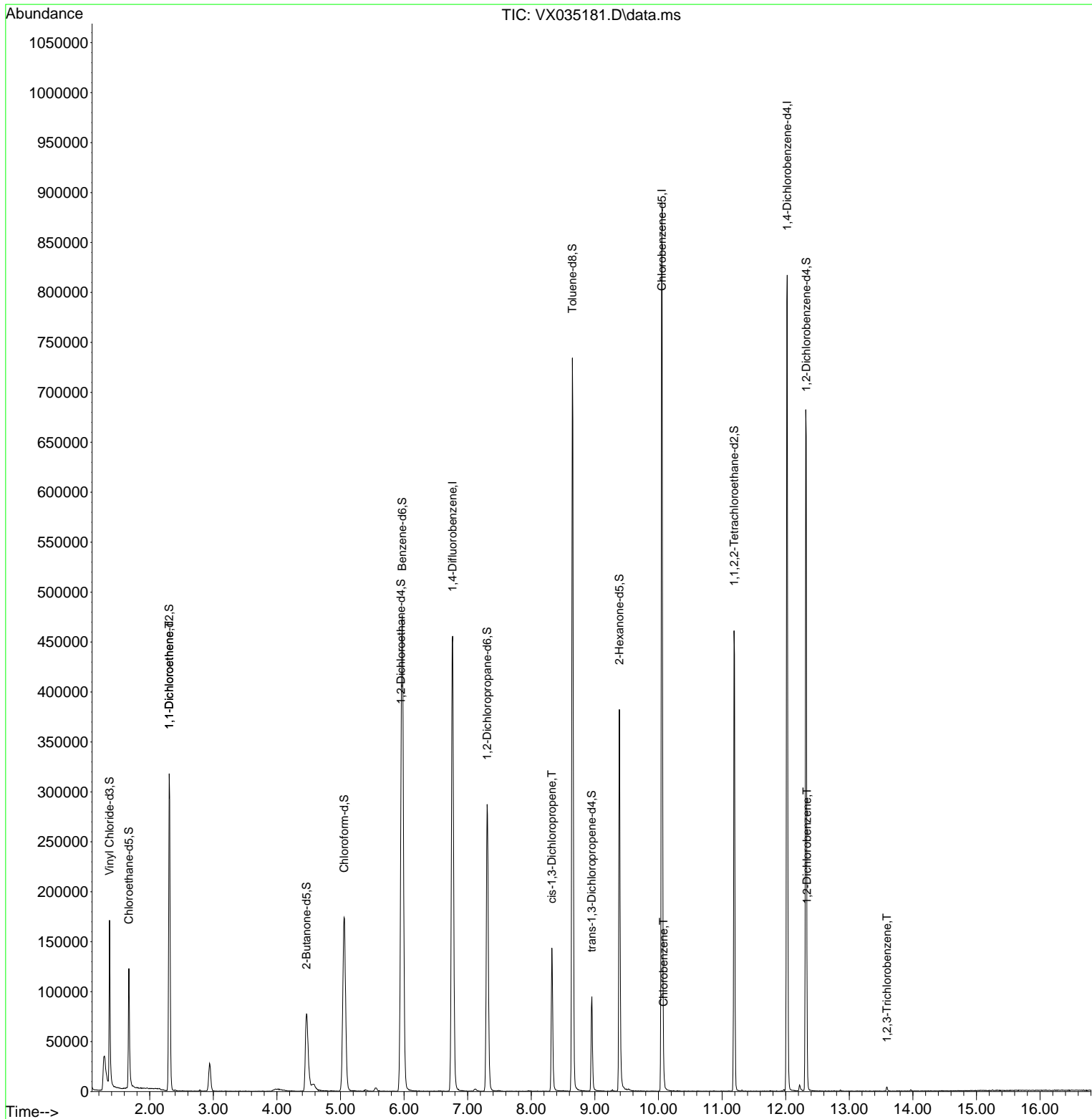
Compound	R.T.	QIon	Response	Conc	Units	Dev(Min)
-----						
Internal Standards						
1) 1,4-Difluorobenzene	6.763	114	474457	50.000	ug/L	0.00
28) Chlorobenzene-d5	10.055	117	411806	50.000	ug/L	0.00
58) 1,4-Dichlorobenzene-d4	12.024	152	178384	50.000	ug/L	0.00
System Monitoring Compounds						
4) Vinyl Chloride-d3	1.368	65	112973	36.928	ug/L	0.00
Spiked Amount	50.000	Range 60 - 135	Recovery =	73.860%		
7) Chloroethane-d5	1.673	69	84240	38.107	ug/L	0.00
Spiked Amount	50.000	Range 70 - 130	Recovery =	76.220%		
11) 1,1-Dichloroethene-d2	2.307	65	57159	39.048	ug/L	0.00
Spiked Amount	50.000	Range 60 - 125	Recovery =	78.100%		
21) 2-Butanone-d5	4.465	46	154074	75.574	ug/L	0.00
Spiked Amount	100.000	Range 40 - 130	Recovery =	75.570%		
24) Chloroform-d	5.056	84	226491	39.313	ug/L	0.00
Spiked Amount	50.000	Range 70 - 125	Recovery =	78.620%		
26) 1,2-Dichloroethane-d4	5.952	65	148979	40.268	ug/L	0.00
Spiked Amount	50.000	Range 70 - 125	Recovery =	80.540%		
32) Benzene-d6	5.971	84	488810	41.321	ug/L	0.00
Spiked Amount	50.000	Range 70 - 125	Recovery =	82.640%		
36) 1,2-Dichloropropane-d6	7.306	67	147338	40.774	ug/L	0.00
Spiked Amount	50.000	Range 70 - 120	Recovery =	81.540%		
41) Toluene-d8	8.647	98	438215	40.533	ug/L	0.00
Spiked Amount	50.000	Range 80 - 120	Recovery =	81.060%		
43) trans-1,3-Dichloroprop...	8.952	79	44796	28.367	ug/L	0.00
Spiked Amount	50.000	Range 60 - 125	Recovery =	56.740%#		
47) 2-Hexanone-d5	9.385	63	107510	74.089	ug/L	0.00
Spiked Amount	100.000	Range 45 - 130	Recovery =	74.090%		
56) 1,1,2,2-Tetrachloroeth...	11.189	84	176623	39.911	ug/L	0.00
Spiked Amount	50.000	Range 65 - 120	Recovery =	79.820%		
66) 1,2-Dichlorobenzene-d4	12.323	152	146329	42.330	ug/L	0.00
Spiked Amount	50.000	Range 80 - 120	Recovery =	84.660%		
-----						
Target Compounds						Qvalue
12) 1,1-Dichloroethene	2.307	96	1340	0.473	ug/L #	1
39) cis-1,3-Dichloropropene	8.324	75	3293	0.671	ug/L #	64
51) Chlorobenzene	10.080	112	6145	0.721	ug/L	99
67) 1,2-Dichlorobenzene	12.335	146	5125	0.914	ug/L	91
72) 1,2,3-Trichlorobenzene	13.591	180	1421	0.449	ug/L	93
-----						

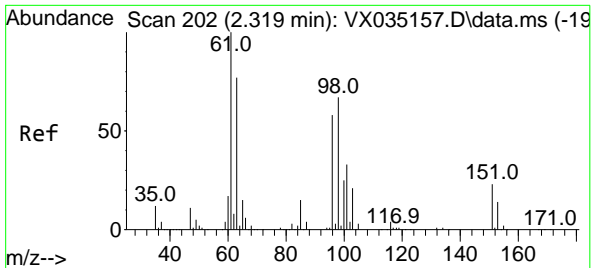
(#) = qualifier out of range (m) = manual integration (+) = signals summed

Data Path : Z:\voasrv\HPCHEM1\MSVOA\_X\Data\VX041923\  
 Data File : VX035181.D  
 Acq On : 19 Apr 2023 19:43  
 Operator : JC/MD  
 Sample : 02378-04  
 Misc : 5.0mL/MSVOA\_X/WATER  
 ALS Vial : 27 Sample Multiplier: 1

Instrument :  
 MSVOA\_X  
 ClientSampleId :

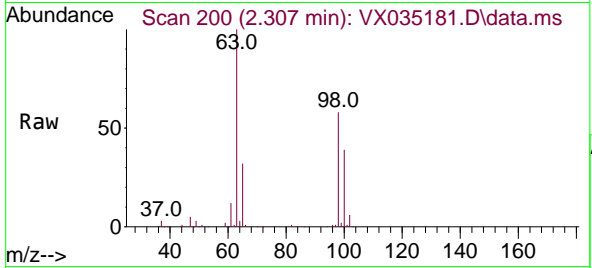
Quant Time: Apr 20 02:59:09 2023  
 Quant Method : Z:\voasrv\HPCHEM1\MSVOA\_X\Method\SFAMXML041823WMA.M  
 Quant Title : VOC Analysis  
 QLast Update : Thu Apr 20 02:36:32 2023  
 Response via : Initial Calibration



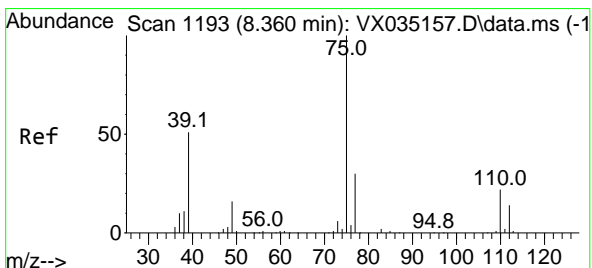
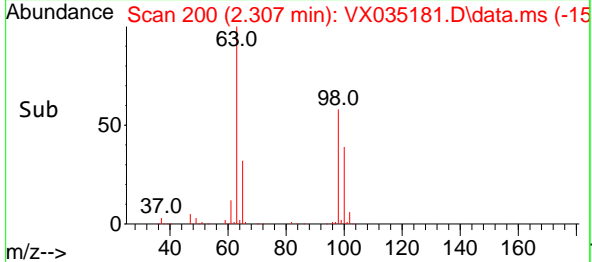
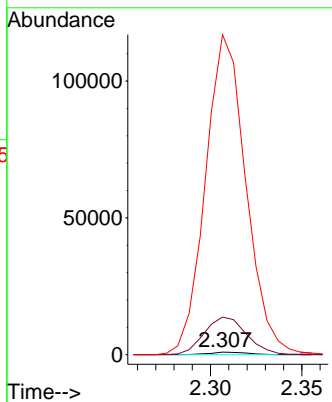


#12  
 1,1-Dichloroethene  
 Concen: 0.473 ug/L  
 RT: 2.307 min Scan# 200  
 Delta R.T. -0.012 min  
 Lab File: VX035181.D  
 Acq: 19 Apr 2023 19:43

Instrument : MSVOA\_X  
 ClientSampleId :

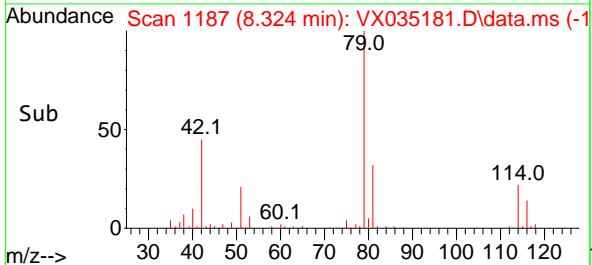
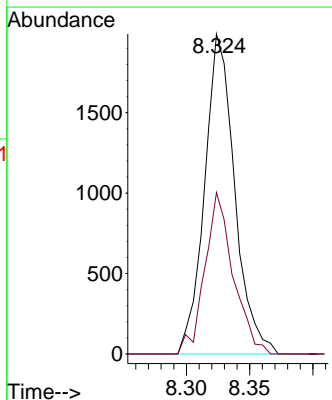
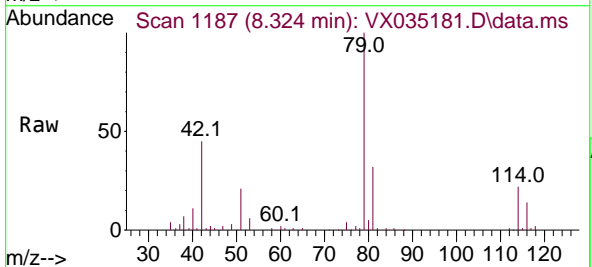


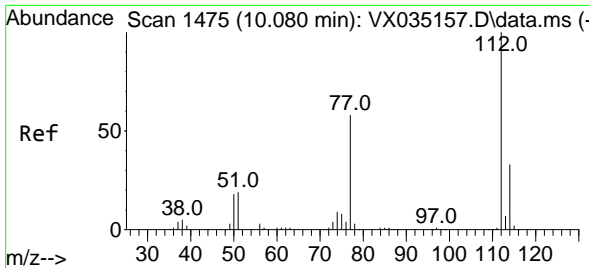
Tgt Ion: 96 Resp: 1340  
 Ion Ratio Lower Upper  
 96 100  
 61 1466.3 119.0 221.0#  
 63 12493.2 91.0 169.0#



#39  
 cis-1,3-Dichloropropene  
 Concen: 0.671 ug/L  
 RT: 8.324 min Scan# 1187  
 Delta R.T. -0.037 min  
 Lab File: VX035181.D  
 Acq: 19 Apr 2023 19:43

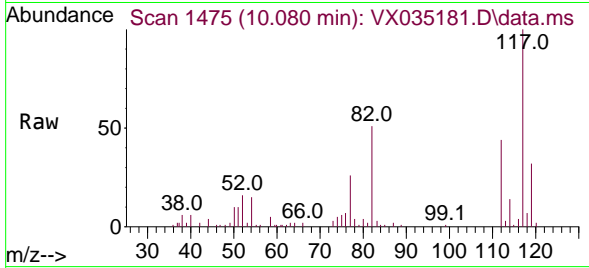
Tgt Ion: 75 Resp: 3293  
 Ion Ratio Lower Upper  
 75 100  
 77 50.5 21.4 39.8#





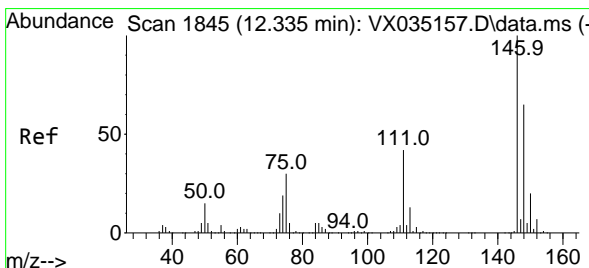
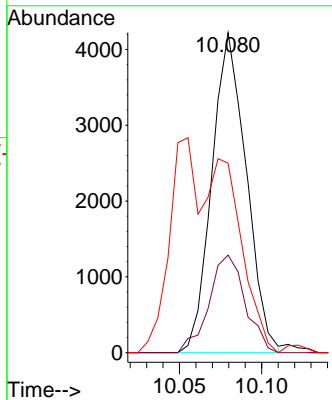
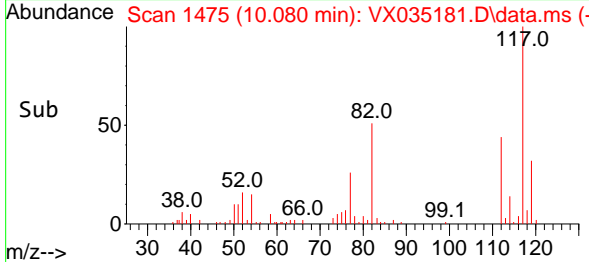
#51  
 Chlorobenzene  
 Concen: 0.721 ug/L  
 RT: 10.080 min Scan# 1475  
 Delta R.T. -0.000 min  
 Lab File: VX035181.D  
 Acq: 19 Apr 2023 19:43

Instrument : MSVOA\_X  
 ClientSampleId :

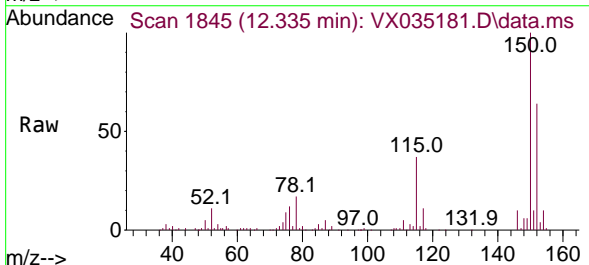


Tgt Ion:112 Resp: 6145

Ion	Ratio	Lower	Upper
112	100		
114	30.5	22.4	41.6
77	59.2	47.0	70.6

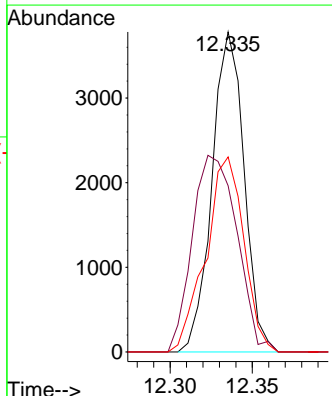
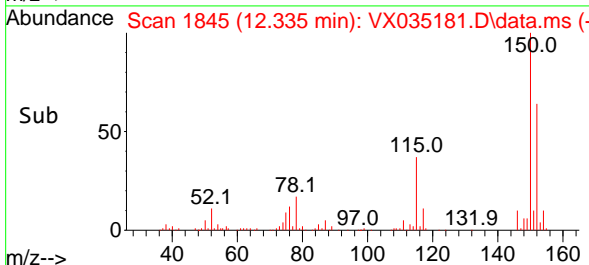


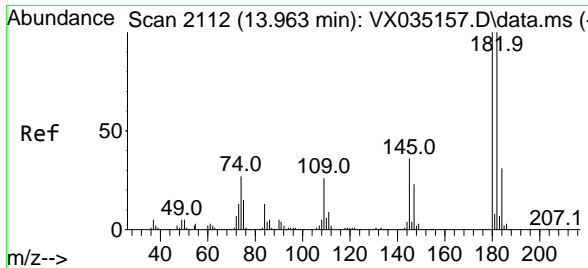
#67  
 1,2-Dichlorobenzene  
 Concen: 0.914 ug/L  
 RT: 12.335 min Scan# 1845  
 Delta R.T. 0.000 min  
 Lab File: VX035181.D  
 Acq: 19 Apr 2023 19:43



Tgt Ion:146 Resp: 5125

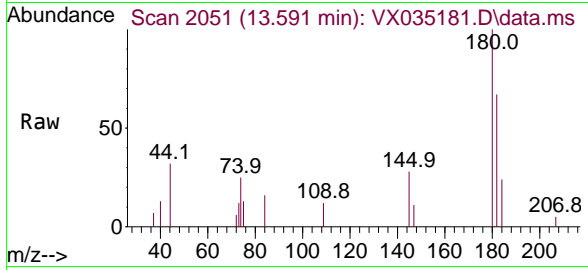
Ion	Ratio	Lower	Upper
146	100		
111	52.0	34.7	52.1
148	60.9	52.1	78.1





#72  
 1,2,3-Trichlorobenzene  
 Concen: 0.449 ug/L  
 RT: 13.591 min Scan# 20  
 Delta R.T. -0.372 min  
 Lab File: VX035181.D  
 Acq: 19 Apr 2023 19:43

Instrument :  
 MSVOA\_X  
 ClientSampleId :



Tgt Ion:180 Resp: 1421

Ion	Ratio	Lower	Upper
180	100		
182	99.7	75.0	112.6
145	29.1	27.1	40.7

