

Data Path : Z:\voasrv\HPCHEM1\MSVOA_X\Data\VX041923\
 Data File : VX035196.D
 Acq On : 20 Apr 2023 01:53
 Operator : JC/MD
 Sample : 02378-14
 Misc : 5.0mL/MSVOA_X/WATER
 ALS Vial : 43 Sample Multiplier: 1

Instrument :
 MSVOA_X
 ClientSampleId :

Quant Time: Apr 20 05:10:24 2023
 Quant Method : Z:\voasrv\HPCHEM1\MSVOA_X\Method\SFAMXML041823WMA.M
 Quant Title : VOC Analysis
 QLast Update : Thu Apr 20 04:51:49 2023
 Response via : Initial Calibration

Compound	R.T.	QIon	Response	Conc	Units	Dev(Min)
Internal Standards						
1) 1,4-Difluorobenzene	6.763	114	433423	50.000	ug/L	0.00
28) Chlorobenzene-d5	10.092	117	302335	50.000	ug/L	# 0.04
58) 1,4-Dichlorobenzene-d4	12.043	152	168336	50.000	ug/L	# 0.02
System Monitoring Compounds						
4) Vinyl Chloride-d3	1.368	65	121502	43.476	ug/L	0.00
Spiked Amount	50.000	Range 60 - 135	Recovery	=	86.960%	
7) Chloroethane-d5	1.673	69	95637	47.358	ug/L	0.00
Spiked Amount	50.000	Range 70 - 130	Recovery	=	94.720%	
11) 1,1-Dichloroethene-d2	2.307	65	64392	48.154	ug/L	0.00
Spiked Amount	50.000	Range 60 - 125	Recovery	=	96.300%	
21) 2-Butanone-d5	4.459	46	217294	116.675	ug/L	0.00
Spiked Amount	100.000	Range 40 - 130	Recovery	=	116.670%	
24) Chloroform-d	5.056	84	305869	58.117	ug/L	0.00
Spiked Amount	50.000	Range 70 - 125	Recovery	=	116.240%	
26) 1,2-Dichloroethane-d4	5.971	65	185771	54.966	ug/L	0.01
Spiked Amount	50.000	Range 70 - 125	Recovery	=	109.940%	
32) Benzene-d6	5.989	84	582253	67.042	ug/L	0.01
Spiked Amount	50.000	Range 70 - 125	Recovery	=	134.080%#	
36) 1,2-Dichloropropane-d6	7.306	67	181386	68.372	ug/L	0.00
Spiked Amount	50.000	Range 70 - 120	Recovery	=	136.740%#	
41) Toluene-d8	8.653	98	514528	64.823	ug/L	0.00
Spiked Amount	50.000	Range 80 - 120	Recovery	=	129.640%#	
43) trans-1,3-Dichloroprop...	8.952	79	73054	63.011	ug/L	0.00
Spiked Amount	50.000	Range 60 - 125	Recovery	=	126.020%#	
47) 2-Hexanone-d5	9.391	63	154447	144.973	ug/L	0.00
Spiked Amount	100.000	Range 45 - 130	Recovery	=	144.970%#	
56) 1,1,2,2-Tetrachloroeth...	11.195	84	219673	67.613	ug/L	0.00
Spiked Amount	50.000	Range 65 - 120	Recovery	=	135.220%#	
66) 1,2-Dichlorobenzene-d4	12.341	152	159239	48.814	ug/L	0.02
Spiked Amount	50.000	Range 80 - 120	Recovery	=	97.620%	
Target Compounds						
12) 1,1-Dichloroethene	2.313	96	1757	0.679	ug/L #	1
13) Acetone	2.392	43	39650	28.705	ug/L	99
25) Chloroform	5.093	83	645803	123.922	ug/L	100
27) 1,2-Dichloroethane	6.074	62	681562	163.287	ug/L #	73
29) Cyclohexane	5.471	56	38583	10.562	ug/L	99
31) Carbon tetrachloride	5.678	117	411545	136.872	ug/L	100
35) Methylcyclohexane	7.385	83	13540	4.128	ug/L #	75
38) Bromodichloromethane	7.830	83	6665	2.340	ug/L	97
42) Toluene	8.720	91	23981	2.525	ug/L	99
46) Tetrachloroethene	9.275	164	4497	2.479	ug/L	98
48) 2-Hexanone	9.391	43	18280	7.577	ug/L #	70
49) Dibromochloromethane	9.525	129	3204	1.474	ug/L	87
51) Chlorobenzene	10.342	112	6557	1.048	ug/L	97
61) 1,2,3-Trichloropropane	11.201	75	8642	2.781	ug/L #	1
64) 1,3-Dichlorobenzene	11.982	146	9688843	1855.946	ug/L	86
65) 1,4-Dichlorobenzene	12.061	146	5102225	955.133	ug/L #	60
67) 1,2-Dichlorobenzene	12.360	146	5198225	982.041	ug/L #	60
68) 1,2-Dibromo-3-chloropr...	12.921	75	110088	143.552	ug/L #	2
69) 1,3,5-Trichlorobenzene	13.116	180	24032	7.446	ug/L	98

Data Path : Z:\voasrv\HPCHEM1\MSVOA_X\Data\VX041923\
 Data File : VX035196.D
 Acq On : 20 Apr 2023 01:53
 Operator : JC/MD
 Sample : 02378-14
 Misc : 5.0mL/MSVOA_X/WATER
 ALS Vial : 43 Sample Multiplier: 1

Instrument :
 MSVOA_X
 ClientSampleId :

Quant Time: Apr 20 05:10:24 2023
 Quant Method : Z:\voasrv\HPCHEM1\MSVOA_X\Method\SFAMXML041823WMA.M
 Quant Title : VOC Analysis
 QLast Update : Thu Apr 20 04:51:49 2023
 Response via : Initial Calibration

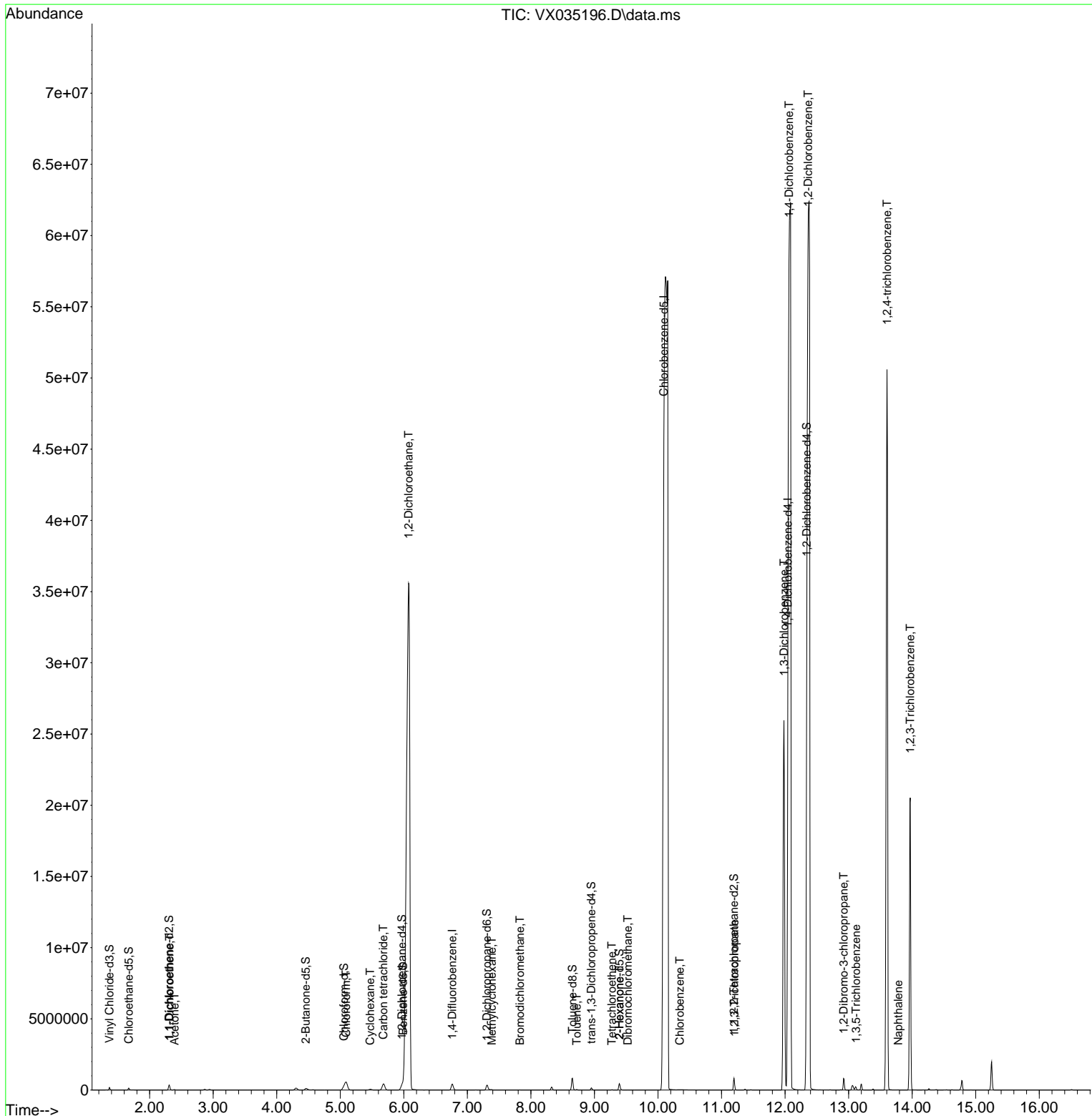
Compound	R.T.	QIon	Response	Conc	Units	Dev(Min)
70) 1,2,4-trichlorobenzene	13.603	180	12425856	4111.840	ug/L #	94
71) Naphthalene	13.780	128	6576	0.611	ug/L #	94
72) 1,2,3-Trichlorobenzene	13.969	180	4903187	1643.537	ug/L	97

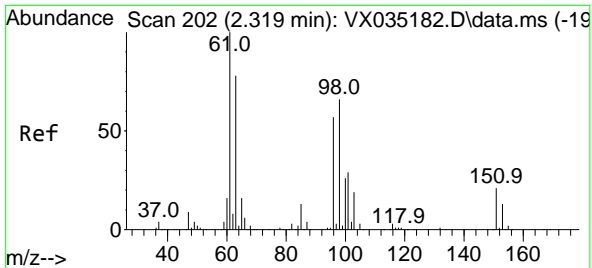
(#) = qualifier out of range (m) = manual integration (+) = signals summed

Data Path : Z:\voasrv\HPCHEM1\MSVOA_X\Data\VX041923\
 Data File : VX035196.D
 Acq On : 20 Apr 2023 01:53
 Operator : JC/MD
 Sample : 02378-14
 Misc : 5.0mL/MSVOA_X/WATER
 ALS Vial : 43 Sample Multiplier: 1

Instrument :
 MSVOA_X
 ClientSampleId :

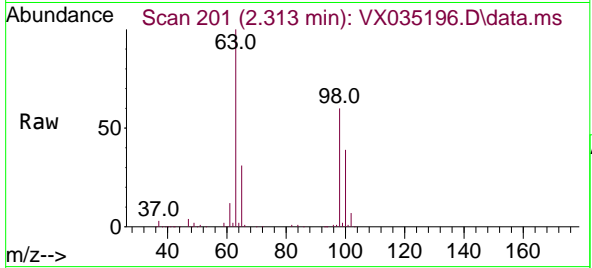
Quant Time: Apr 20 05:10:24 2023
 Quant Method : Z:\voasrv\HPCHEM1\MSVOA_X\Method\SFAMXLM041823WMA.M
 Quant Title : VOC Analysis
 QLast Update : Thu Apr 20 04:51:49 2023
 Response via : Initial Calibration



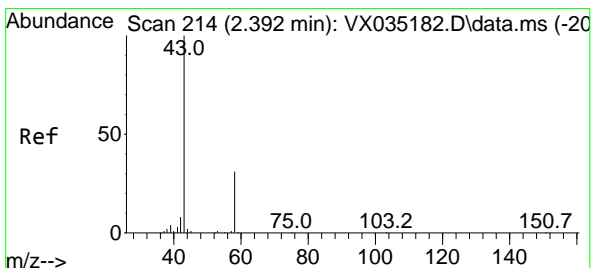
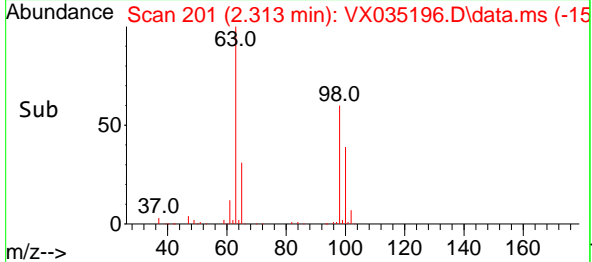
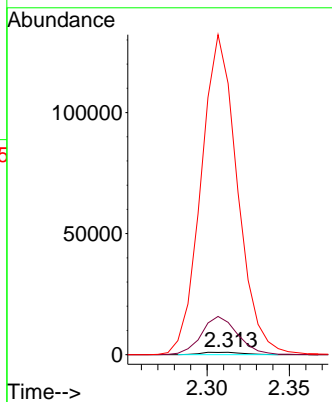


#12
 1,1-Dichloroethene
 Concen: 0.679 ug/L
 RT: 2.313 min Scan# 201
 Delta R.T. -0.006 min
 Lab File: VX035196.D
 Acq: 20 Apr 2023 01:53

Instrument : MSVOA_X
 ClientSampleId :

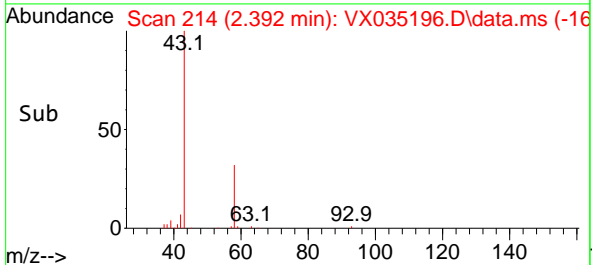
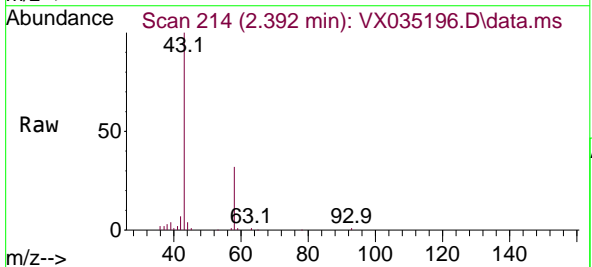
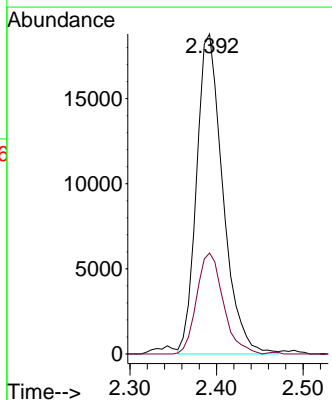


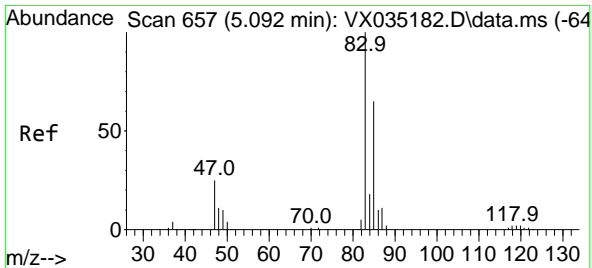
Tgt Ion: 96 Resp: 1757
 Ion Ratio Lower Upper
 96 100
 61 1302.5 119.0 221.0#
 63 10952.1 91.0 169.0#



#13
 Acetone
 Concen: 28.705 ug/L
 RT: 2.392 min Scan# 214
 Delta R.T. 0.000 min
 Lab File: VX035196.D
 Acq: 20 Apr 2023 01:53

Tgt Ion: 43 Resp: 39650
 Ion Ratio Lower Upper
 43 100
 58 31.8 0.0 62.0

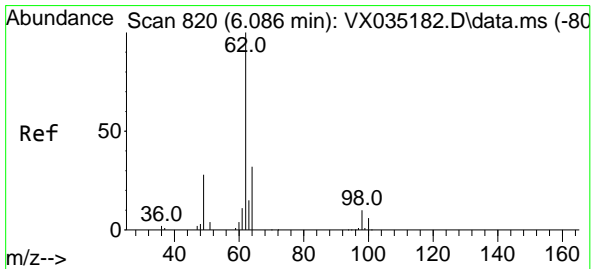
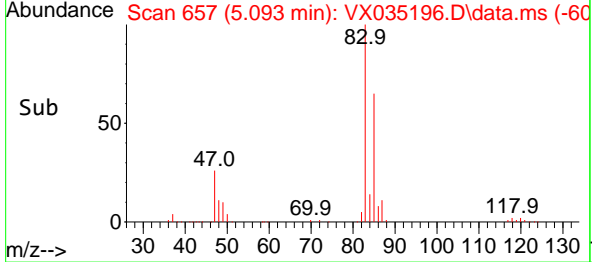
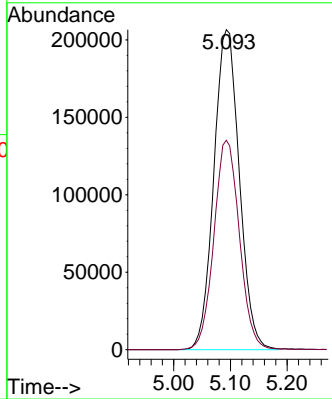
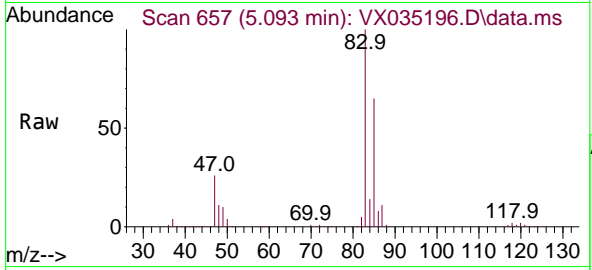




#25
 Chloroform
 Concen: 123.922 ug/L
 RT: 5.093 min Scan# 61
 Delta R.T. 0.000 min
 Lab File: VX035196.D
 Acq: 20 Apr 2023 01:53

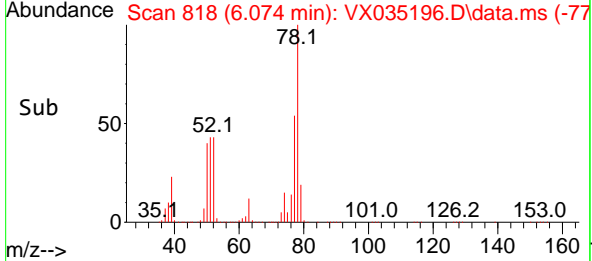
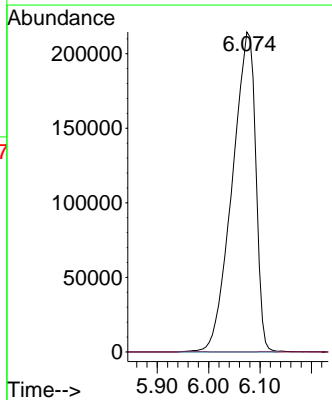
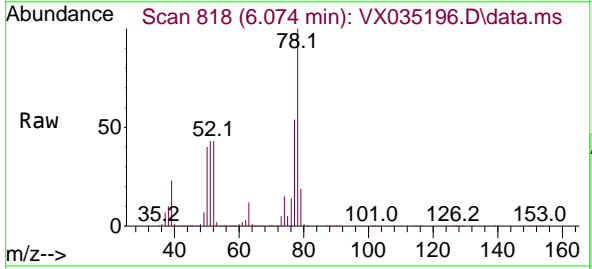
Instrument : MSVOA_X
 ClientSampleId :

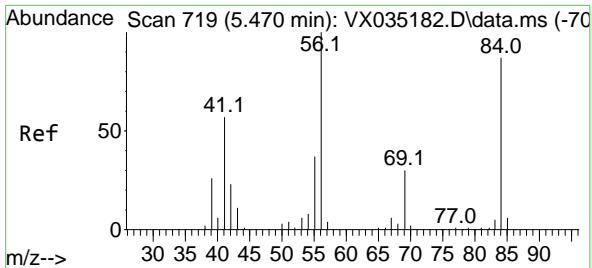
Tgt Ion: 83 Resp: 645803
 Ion Ratio Lower Upper
 83 100
 85 65.5 46.0 85.4



#27
 1,2-Dichloroethane
 Concen: 163.287 ug/L
 RT: 6.074 min Scan# 818
 Delta R.T. -0.012 min
 Lab File: VX035196.D
 Acq: 20 Apr 2023 01:53

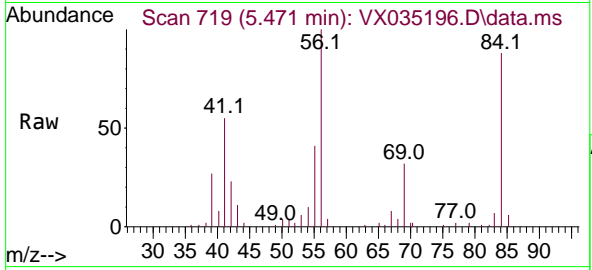
Tgt Ion: 62 Resp: 681562
 Ion Ratio Lower Upper
 62 100
 98 0.0 7.8 11.8#



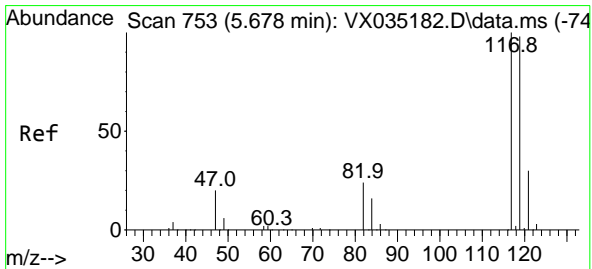
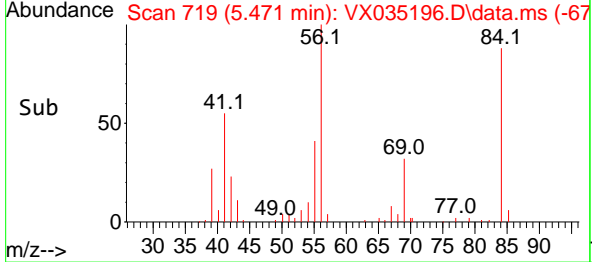
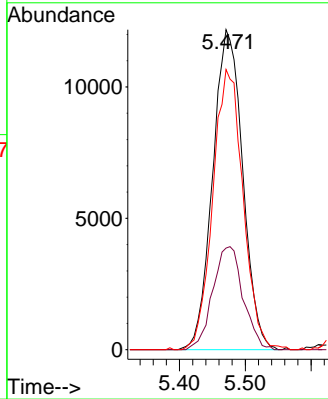


#29
 Cyclohexane
 Concen: 10.562 ug/L
 RT: 5.471 min Scan# 719
 Delta R.T. 0.000 min
 Lab File: VX035196.D
 Acq: 20 Apr 2023 01:53

Instrument :
 MSVOA_X
 ClientSampleId :

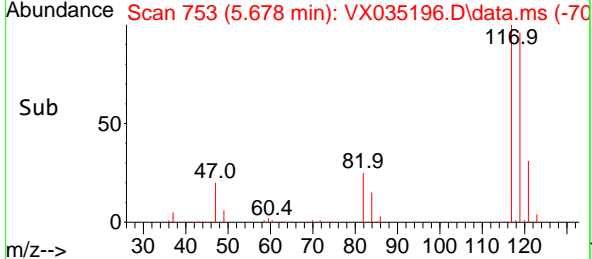
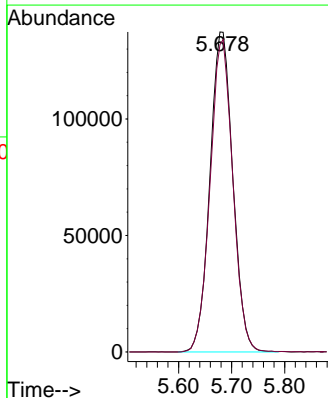
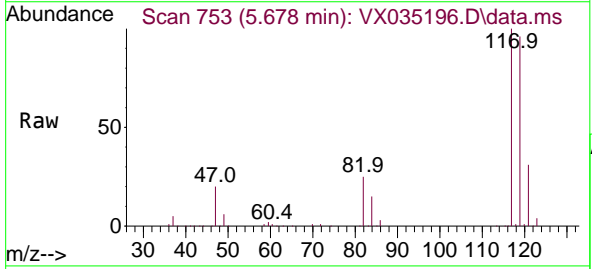


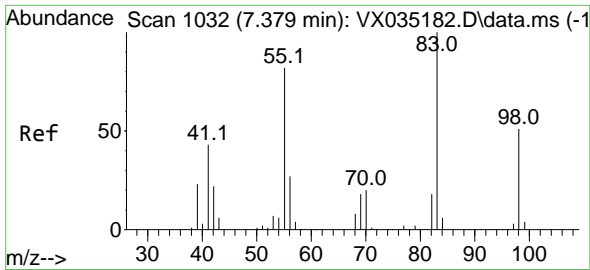
Tgt Ion: 56 Resp: 38583
 Ion Ratio Lower Upper
 56 100
 69 32.5 25.1 37.7
 84 87.8 70.1 105.1



#31
 Carbon tetrachloride
 Concen: 136.872 ug/L
 RT: 5.678 min Scan# 753
 Delta R.T. 0.000 min
 Lab File: VX035196.D
 Acq: 20 Apr 2023 01:53

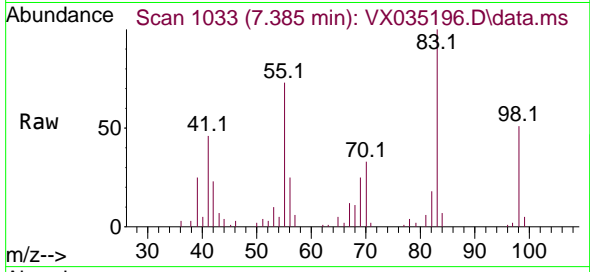
Tgt Ion: 117 Resp: 411545
 Ion Ratio Lower Upper
 117 100
 119 96.6 77.1 115.7



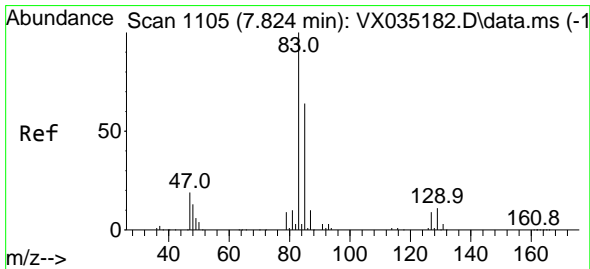
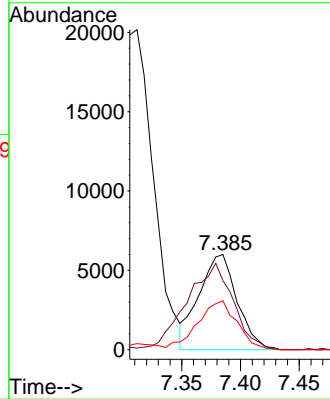
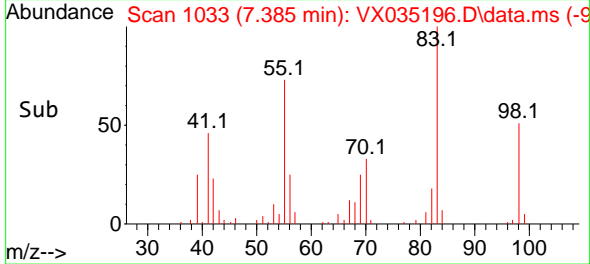


#35
 Methylcyclohexane
 Concen: 4.128 ug/L
 RT: 7.385 min Scan# 1103
 Delta R.T. 0.006 min
 Lab File: VX035196.D
 Acq: 20 Apr 2023 01:53

Instrument :
 MSVOA_X
 ClientSampleId :

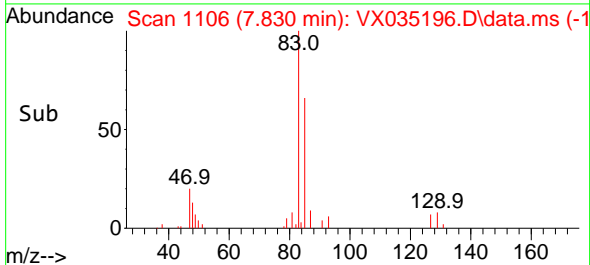
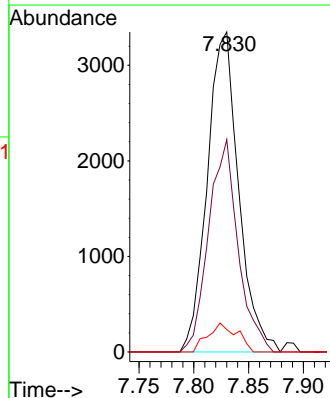
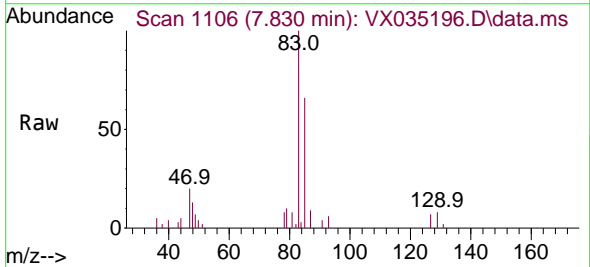


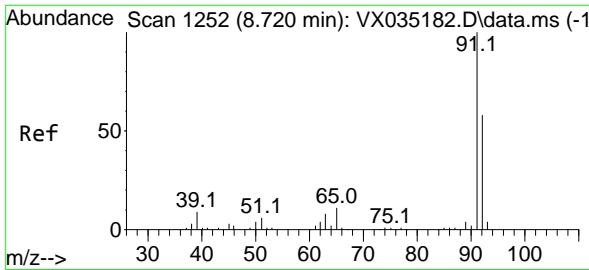
Tgt Ion: 83 Resp: 13540
 Ion Ratio Lower Upper
 83 100
 55 110.0 62.2 93.2#
 98 52.9 39.3 58.9



#38
 Bromodichloromethane
 Concen: 2.340 ug/L
 RT: 7.830 min Scan# 1106
 Delta R.T. 0.006 min
 Lab File: VX035196.D
 Acq: 20 Apr 2023 01:53

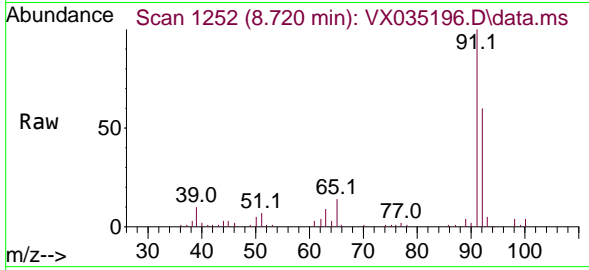
Tgt Ion: 83 Resp: 6665
 Ion Ratio Lower Upper
 83 100
 85 66.4 44.7 82.9
 127 7.0 6.9 10.3



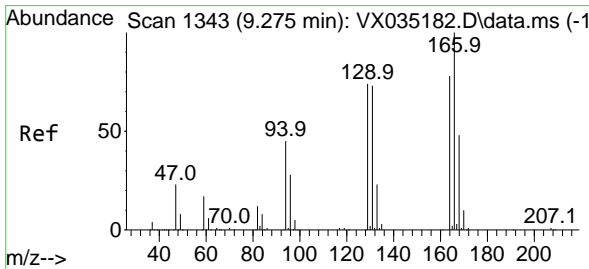
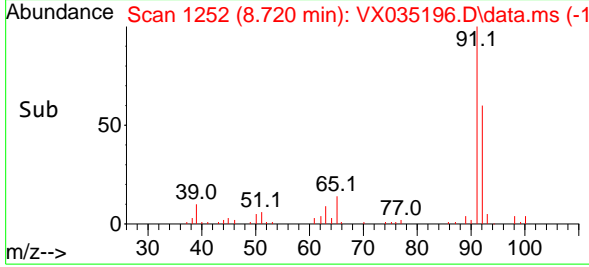
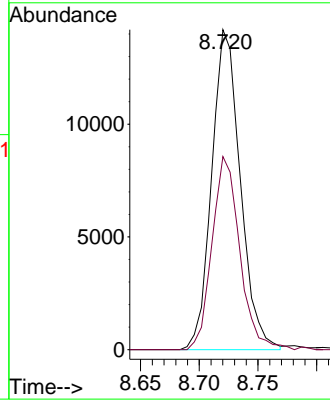


#42
 Toluene
 Concen: 2.525 ug/L
 RT: 8.720 min Scan# 11
 Delta R.T. 0.000 min
 Lab File: VX035196.D
 Acq: 20 Apr 2023 01:53

Instrument :
 MSVOA_X
 ClientSampleId :

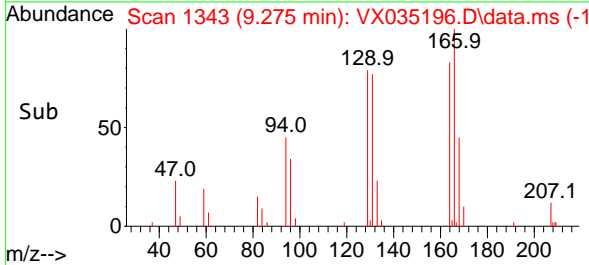
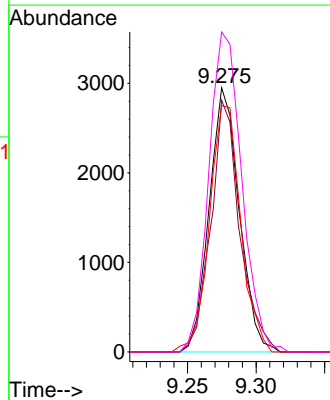
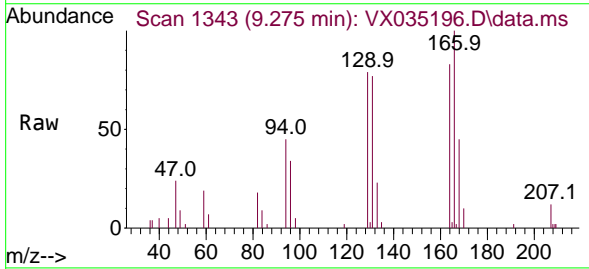


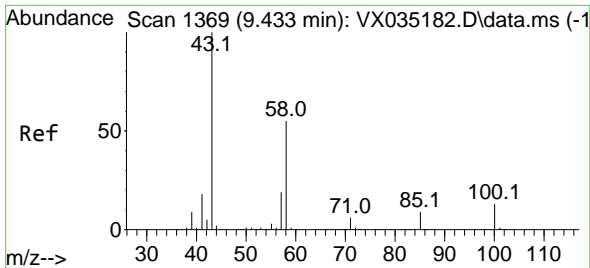
Tgt Ion: 91 Resp: 23981
 Ion Ratio Lower Upper
 91 100
 92 60.4 41.7 77.5



#46
 Tetrachloroethene
 Concen: 2.479 ug/L
 RT: 9.275 min Scan# 1343
 Delta R.T. 0.000 min
 Lab File: VX035196.D
 Acq: 20 Apr 2023 01:53

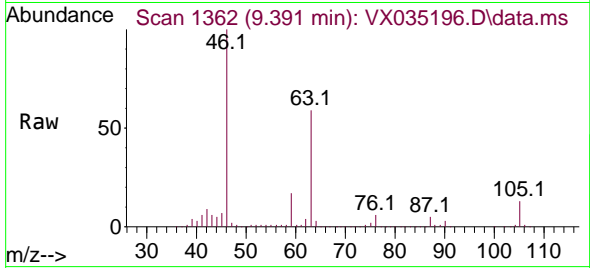
Tgt Ion: 164 Resp: 4497
 Ion Ratio Lower Upper
 164 100
 129 95.3 66.1 122.8
 131 93.3 65.0 120.8
 166 123.0 88.6 164.6





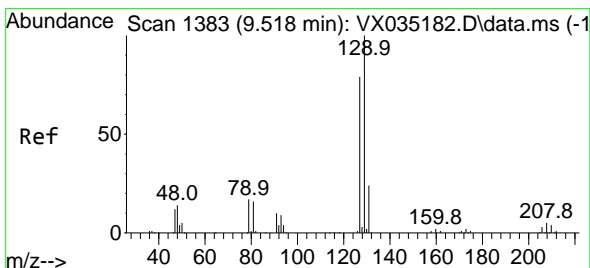
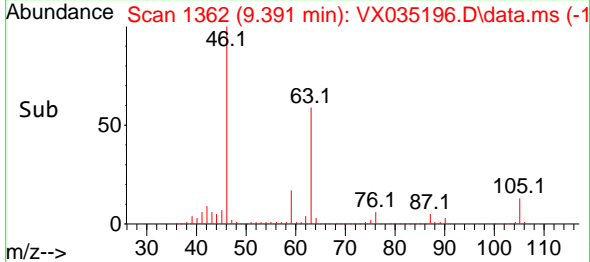
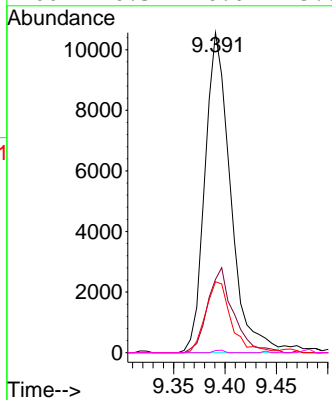
#48
 2-Hexanone
 Concen: 7.577 ug/L
 RT: 9.391 min Scan# 1362
 Delta R.T. -0.042 min
 Lab File: VX035196.D
 Acq: 20 Apr 2023 01:53

Instrument : MSVOA_X
 ClientSampleId :



Tgt Ion: 43 Resp: 18280

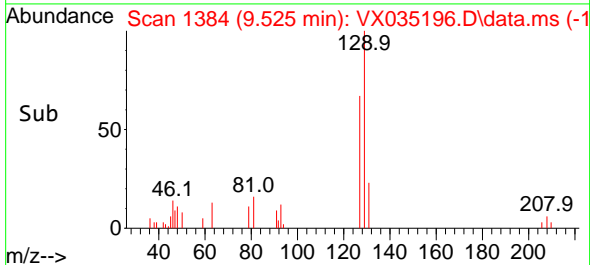
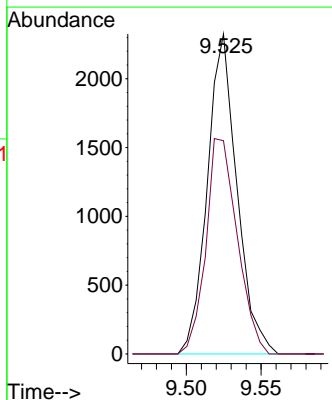
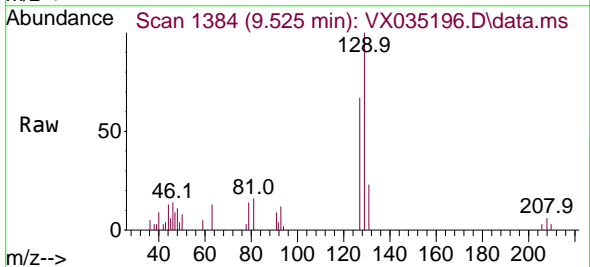
Ion	Ratio	Lower	Upper
43	100		
58	26.7	43.2	64.8#
57	21.2	15.4	23.0
100	0.3	10.0	15.0#

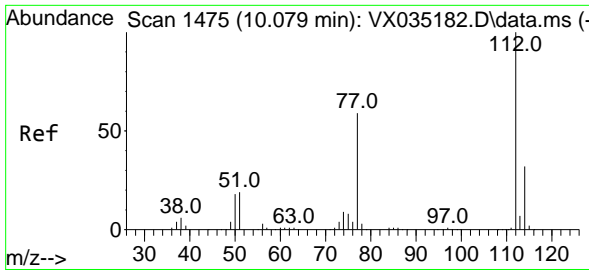


#49
 Dibromochloromethane
 Concen: 1.474 ug/L
 RT: 9.525 min Scan# 1384
 Delta R.T. 0.006 min
 Lab File: VX035196.D
 Acq: 20 Apr 2023 01:53

Tgt Ion: 129 Resp: 3204

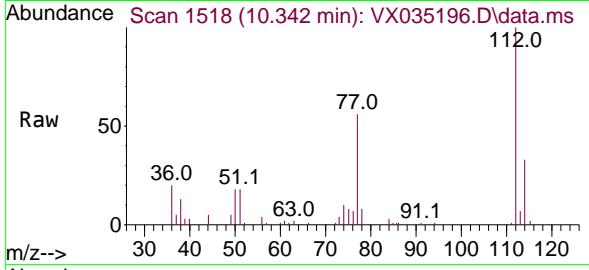
Ion	Ratio	Lower	Upper
129	100		
127	66.7	54.8	101.8



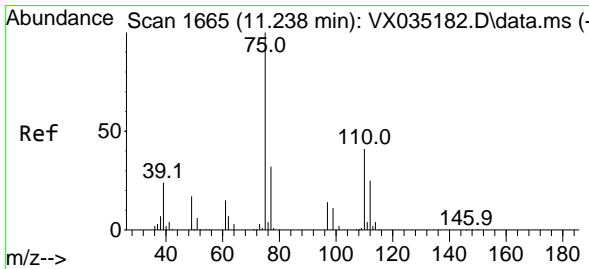
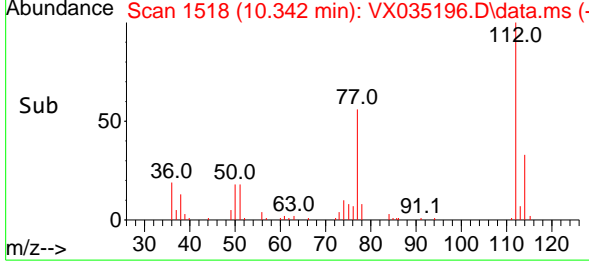
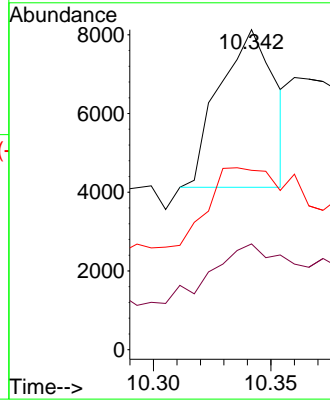


#51
 Chlorobenzene
 Concen: 1.048 ug/L
 RT: 10.342 min Scan# 11
 Delta R.T. 0.262 min
 Lab File: VX035196.D
 Acq: 20 Apr 2023 01:53

Instrument :
 MSVOA_X
 ClientSampleId :

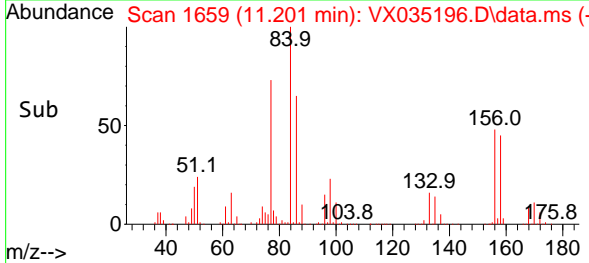
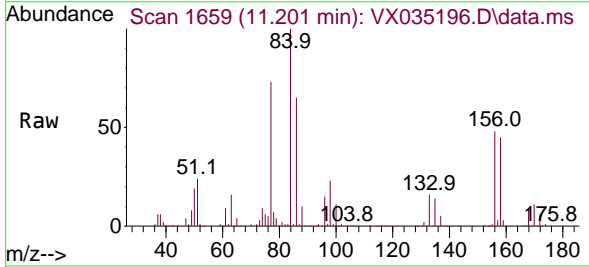
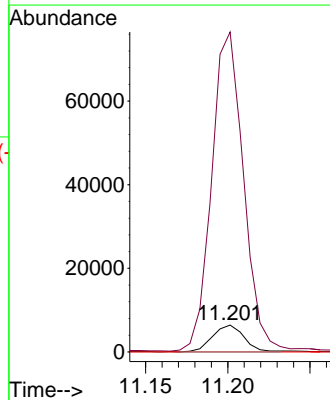


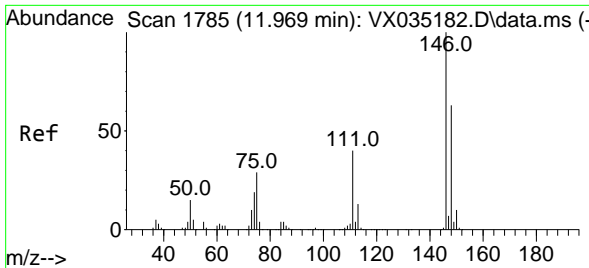
Tgt Ion:112 Resp: 6557
 Ion Ratio Lower Upper
 112 100
 114 33.1 22.4 41.6
 77 56.1 47.0 70.6



#61
 1,2,3-Trichloropropane
 Concen: 2.781 ug/L
 RT: 11.201 min Scan# 1659
 Delta R.T. -0.036 min
 Lab File: VX035196.D
 Acq: 20 Apr 2023 01:53

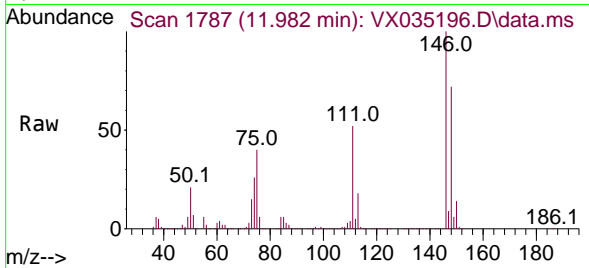
Tgt Ion: 75 Resp: 8642
 Ion Ratio Lower Upper
 75 100
 77 1190.1 25.6 38.4#
 110 0.0 32.5 48.7#



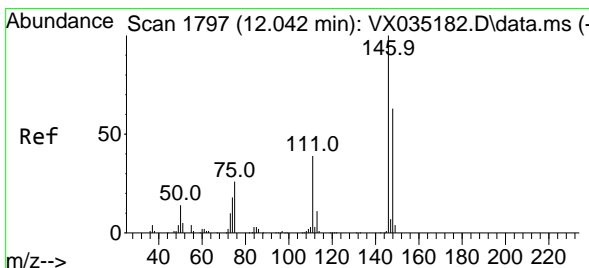
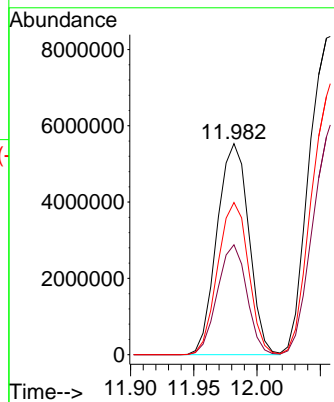
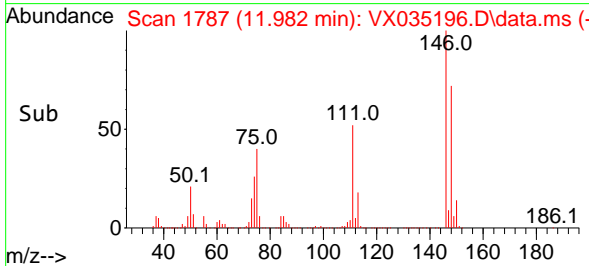


#64
 1,3-Dichlorobenzene
 Concen: 1855.946 ug/L
 RT: 11.982 min Scan# 11
 Delta R.T. 0.012 min
 Lab File: VX035196.D
 Acq: 20 Apr 2023 01:53

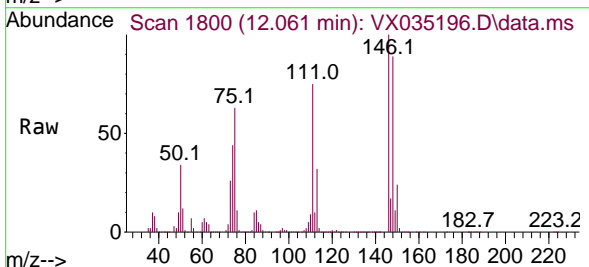
Instrument :
 MSVOA_X
 ClientSampleId :



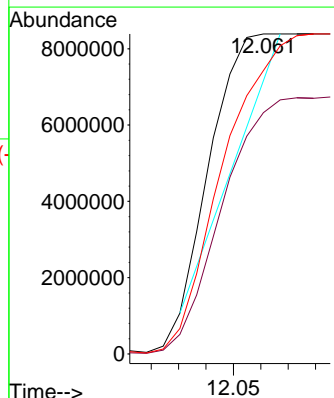
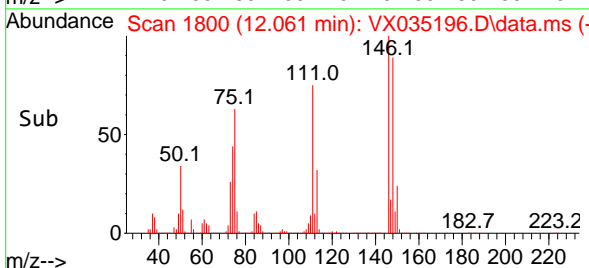
Tgt Ion:146 Resp: 9688843
 Ion Ratio Lower Upper
 146 100
 111 52.1 28.9 53.7
 148 72.0 44.3 82.3

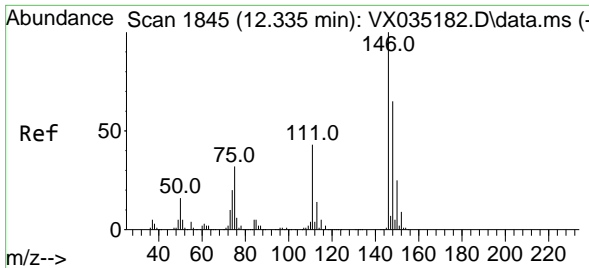


#65
 1,4-Dichlorobenzene
 Concen: 955.133 ug/L
 RT: 12.061 min Scan# 1800
 Delta R.T. 0.019 min
 Lab File: VX035196.D
 Acq: 20 Apr 2023 01:53



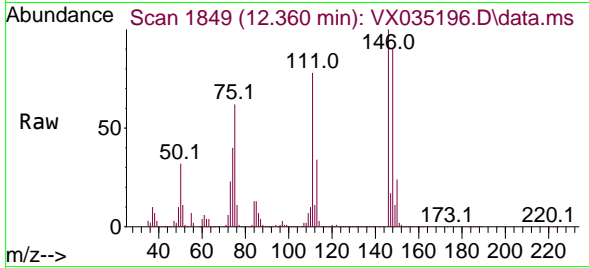
Tgt Ion:146 Resp: 5102225
 Ion Ratio Lower Upper
 146 100
 111 75.4 27.9 51.7#
 148 88.5 45.9 85.3#



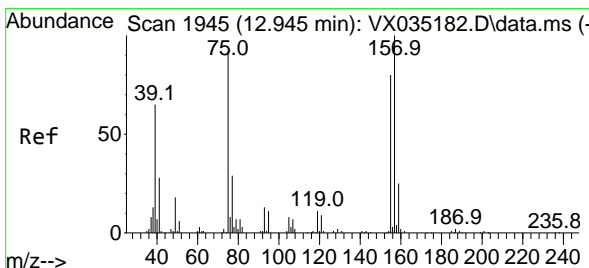
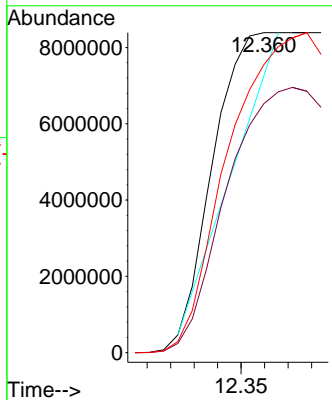
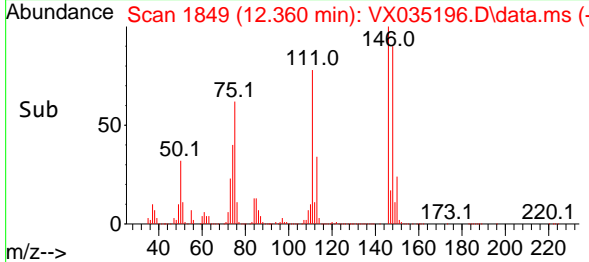


#67
 1,2-Dichlorobenzene
 Concen: 982.041 ug/L
 RT: 12.360 min Scan# 1849
 Delta R.T. 0.025 min
 Lab File: VX035196.D
 Acq: 20 Apr 2023 01:53

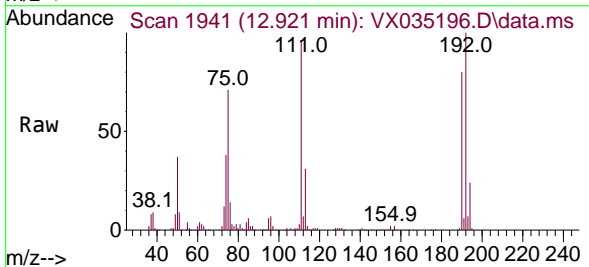
Instrument : MSVOA_X
 ClientSampleId :



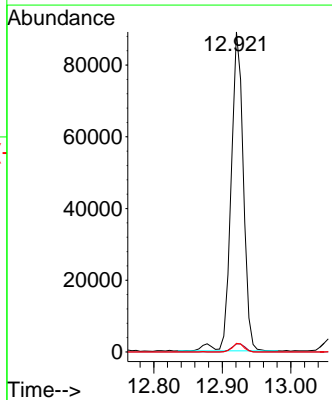
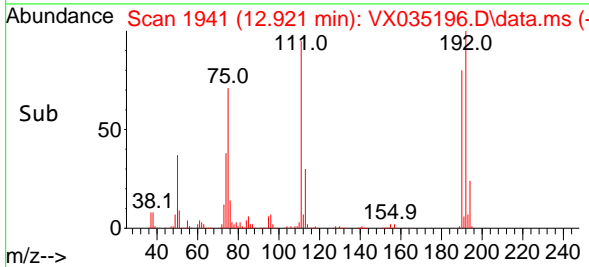
Tgt Ion:146 Resp: 5198225
 Ion Ratio Lower Upper
 146 100
 111 77.8 34.7 52.1#
 148 89.9 52.1 78.1#

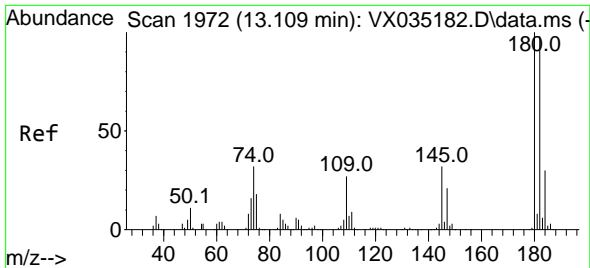


#68
 1,2-Dibromo-3-chloropropane
 Concen: 143.552 ug/L
 RT: 12.921 min Scan# 1941
 Delta R.T. -0.024 min
 Lab File: VX035196.D
 Acq: 20 Apr 2023 01:53



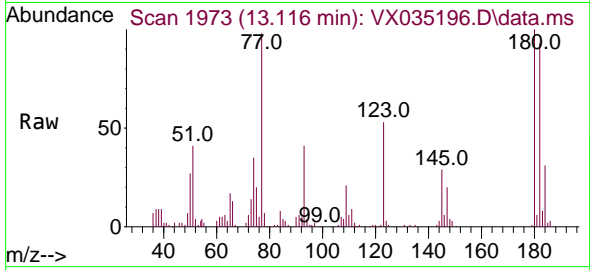
Tgt Ion: 75 Resp: 110088
 Ion Ratio Lower Upper
 75 100
 155 2.5 69.9 104.9#
 157 2.7 90.4 135.6#



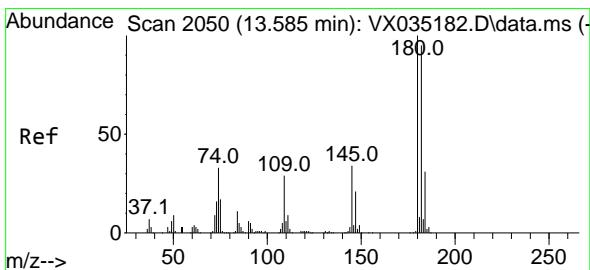
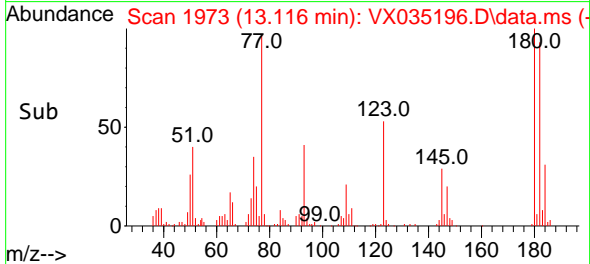
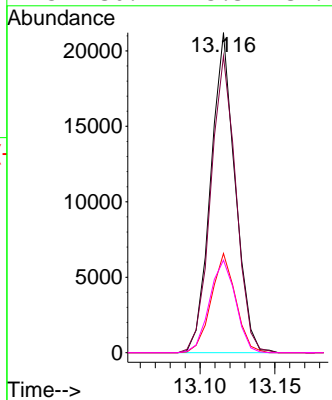


#69
 1,3,5-Trichlorobenzene
 Concen: 7.446 ug/L
 RT: 13.116 min Scan# 1973
 Delta R.T. 0.006 min
 Lab File: VX035196.D
 Acq: 20 Apr 2023 01:53

Instrument : MSVOA_X
 ClientSampleId :

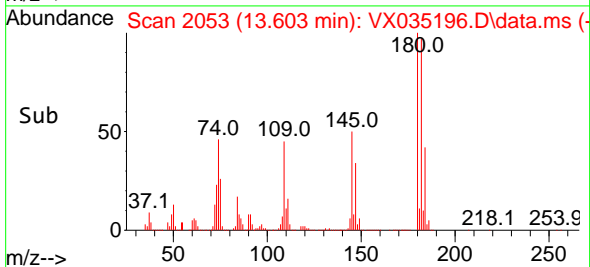
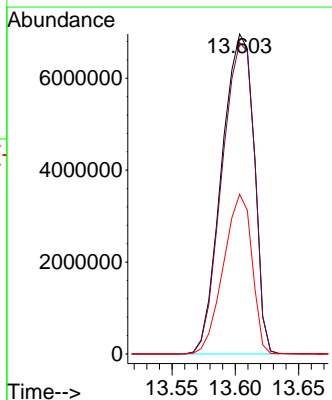
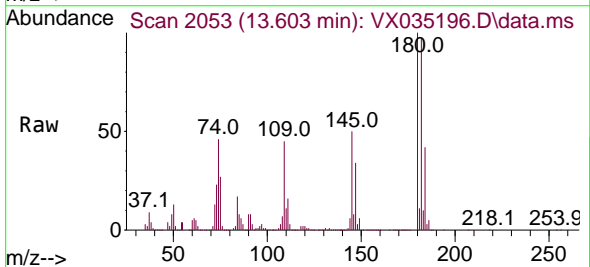


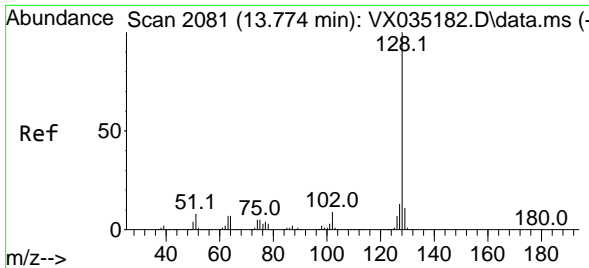
Tgt Ion:180 Resp: 24032
 Ion Ratio Lower Upper
 180 100
 182 95.6 75.4 113.0
 184 31.0 23.8 35.8
 145 30.9 25.3 37.9



#70
 1,2,4-trichlorobenzene
 Concen: 4111.840 ug/L
 RT: 13.603 min Scan# 2053
 Delta R.T. 0.019 min
 Lab File: VX035196.D
 Acq: 20 Apr 2023 01:53

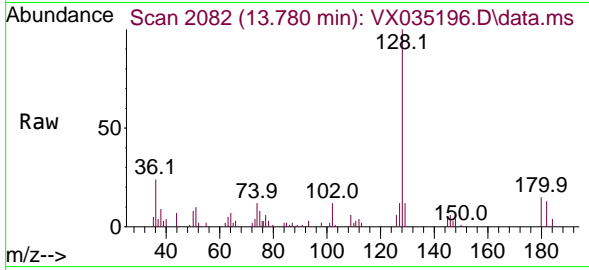
Tgt Ion:180 Resp:12425856
 Ion Ratio Lower Upper
 180 100
 182 97.1 76.6 114.8
 145 43.9 26.2 39.4#



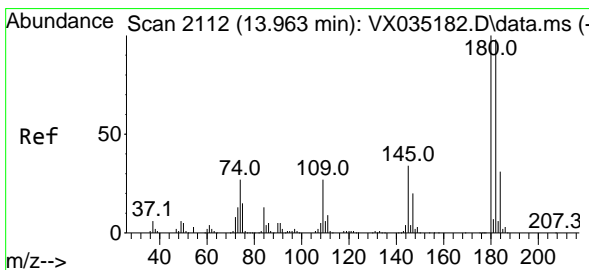
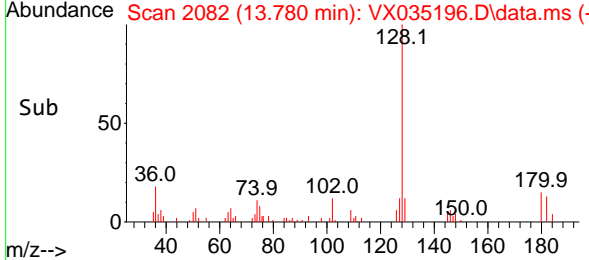
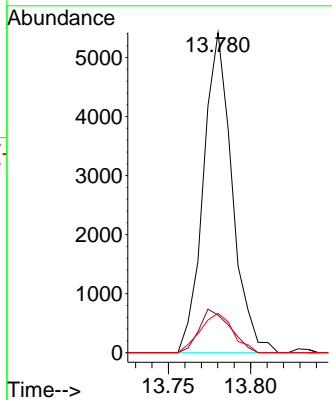


#71
 Naphthalene
 Concen: 0.611 ug/L
 RT: 13.780 min Scan# 2081
 Delta R.T. 0.006 min
 Lab File: VX035196.D
 Acq: 20 Apr 2023 01:53

Instrument : MSVOA_X
 ClientSampleId :



Tgt Ion:128 Resp: 6576
 Ion Ratio Lower Upper
 128 100
 127 14.6 10.2 15.4
 129 14.0 8.9 13.3#



#72
 1,2,3-Trichlorobenzene
 Concen: 1643.537 ug/L
 RT: 13.969 min Scan# 2113
 Delta R.T. 0.006 min
 Lab File: VX035196.D
 Acq: 20 Apr 2023 01:53

Tgt Ion:180 Resp: 4903187
 Ion Ratio Lower Upper
 180 100
 182 95.1 75.0 112.6
 145 37.4 27.1 40.7

