

Data Path : Z:\VOASRV\HPCHEM1\MSVOA X\DATA\VX042120\
 Data File : VX015798.D
 Acq On : 21 Apr 2020 16:39
 Operator : JC/SP
 Sample : L2327-15
 Misc : 5.0mL/MSVOA X/WATER
 ALS Vial : 17 Sample Multiplier: 1

Instrument :
 MSVOA_X
 ClientSampleID :
 TP-4-D

Quant Time: Apr 22 06:14:31 2020
 Quant Method : Z:\VOASRV\HPCHEM1\MSVOA_X\METHOD\82X032720W.M
 Quant Title : SW846 8260
 QLast Update : Fri Mar 27 09:35:51 2020
 Response via : Initial Calibration

Internal Standards	R.T.	QIon	Response	Conc	Units	Dev(Min)
1) Pentafluorobenzene	5.64	168	1043503	50.00	ug/l	0.00
34) 1,4-Difluorobenzene	6.84	114	1591906	50.00	ug/l	0.00
63) Chlorobenzene-d5	10.10	117	1511301	50.00	ug/l	0.00
72) 1,4-Dichlorobenzene-d4	12.06	152	867008	50.00	ug/l	0.00

System Monitoring Compounds

33) 1,2-Dichloroethane-d4	6.04	65	581657	39.52	ug/l	0.00
Spiked Amount				50.000		
			Recovery	=	79.04%	
35) Dibromofluoromethane	5.47	113	463993	45.60	ug/l	0.00
Spiked Amount				50.000		
			Recovery	=	91.20%	
50) Toluene-d8	8.70	98	1904129	50.82	ug/l	0.00
Spiked Amount				50.000		
			Recovery	=	101.64%	
62) 4-Bromofluorobenzene	11.12	95	810453	53.23	ug/l	0.00
Spiked Amount				50.000		
			Recovery	=	106.46%	

Target Compounds

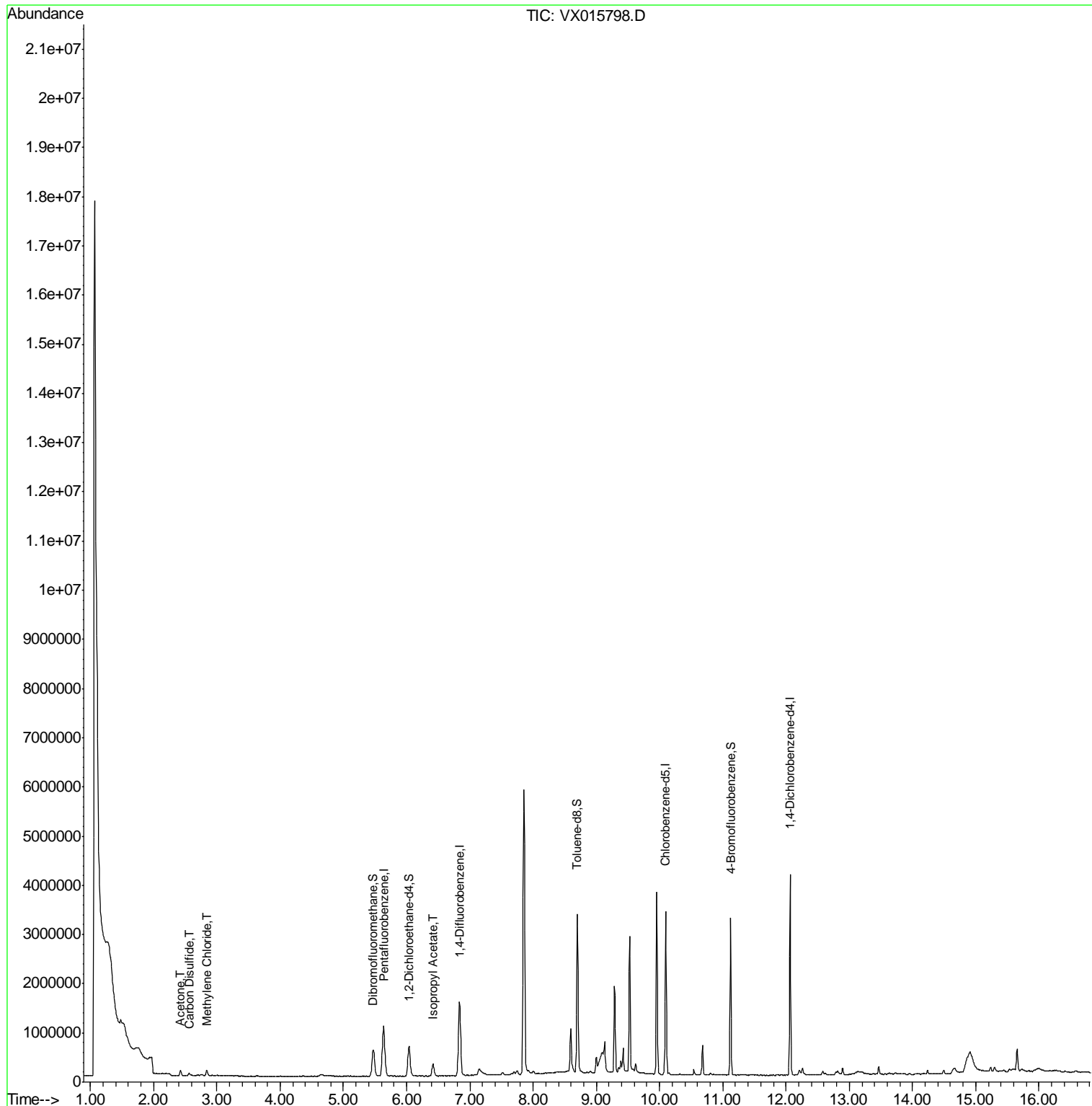
					Qvalue
16) Acetone	2.42	43	137163	21.693	ug/l 99
17) Carbon Disulfide	2.56	76	80725	2.686	ug/l 96
20) Methylene Chloride	2.84	84	45915	3.888	ug/l 96
43) Isopropyl Acetate	6.42	43	364775	11.314	ug/l 99

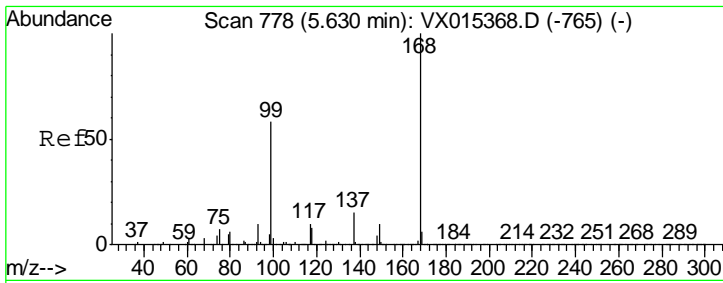
(#) = qualifier out of range (m) = manual integration (+) = signals summed

Data Path : Z:\VOASRV\HPCHEM1\MSVOA X\DATA\VX042120\
 Data File : VX015798.D
 Acq On : 21 Apr 2020 16:39
 Operator : JC/SP
 Sample : L2327-15
 Misc : 5.0mL/MSVOA X/WATER
 ALS Vial : 17 Sample Multiplier: 1

Instrument :
 MSVOA_X
 ClientSampled :
 TP-4-D

Quant Time: Apr 22 06:14:31 2020
 Quant Method : Z:\VOASRV\HPCHEM1\MSVOA_X\METHOD\82X032720W.M
 Quant Title : SW846 8260
 QLast Update : Fri Mar 27 09:35:51 2020
 Response via : Initial Calibration

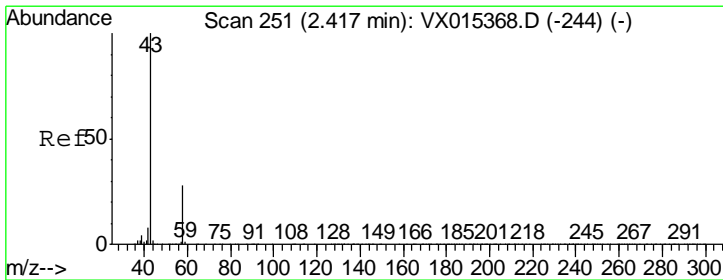
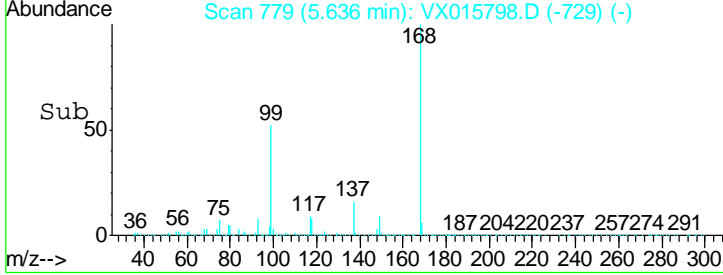
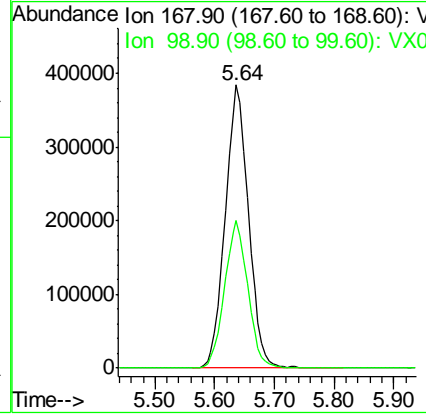
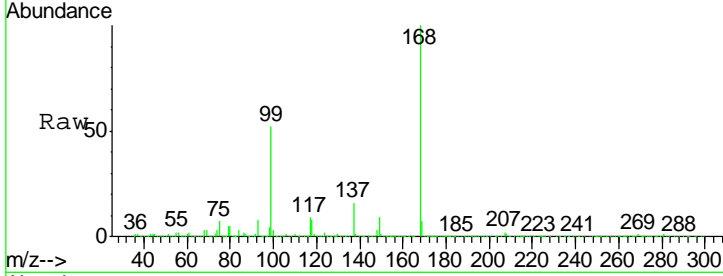




#1
 Pentafluorobenzene
 Concen: 50.000 ug/l
 RT: 5.64 min Scan# 779
 Delta R.T. 0.01 min
 Lab File: VX015798.D
 Acq: 21 Apr 2020 16:39

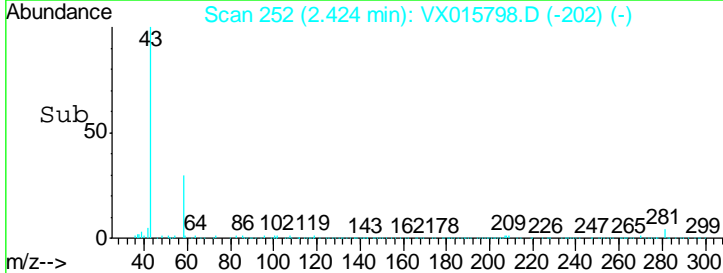
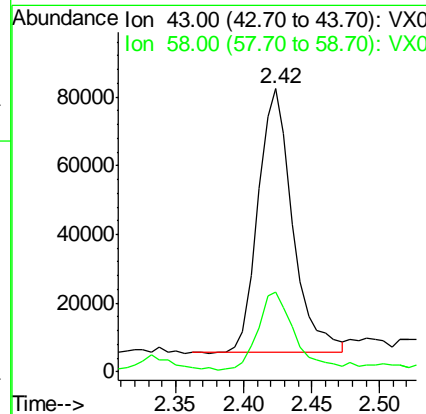
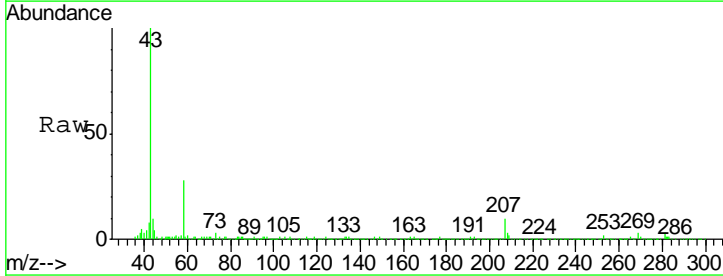
Instrument : MSVOA_X
 ClientSampled : TP-4-D

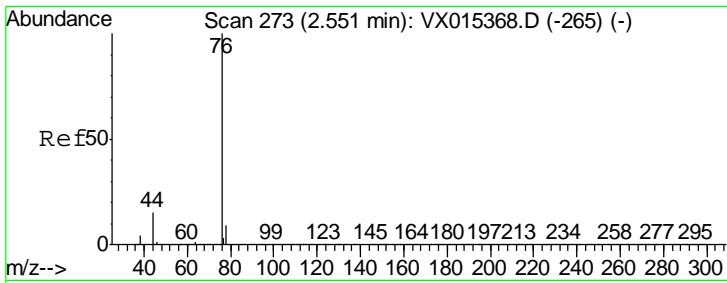
Tgt Ion	Resp	Lower	Upper
168	1043503		
99	51.9	46.4	69.6



#16
 Acetone
 Concen: 21.693 ug/l
 RT: 2.42 min Scan# 252
 Delta R.T. 0.01 min
 Lab File: VX015798.D
 Acq: 21 Apr 2020 16:39

Tgt Ion	Resp	Lower	Upper
43	137163		
58	28.3	22.1	33.1

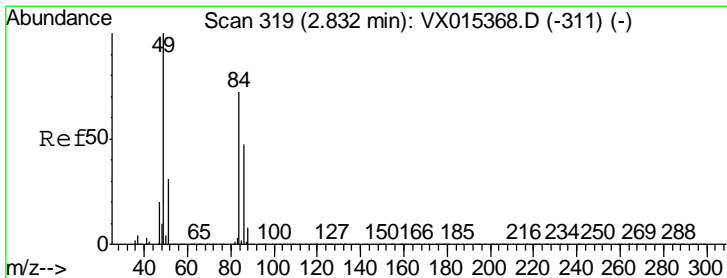
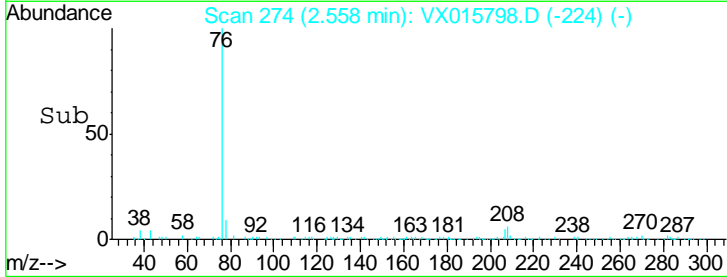
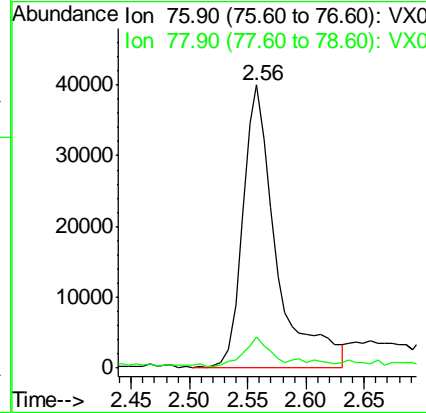
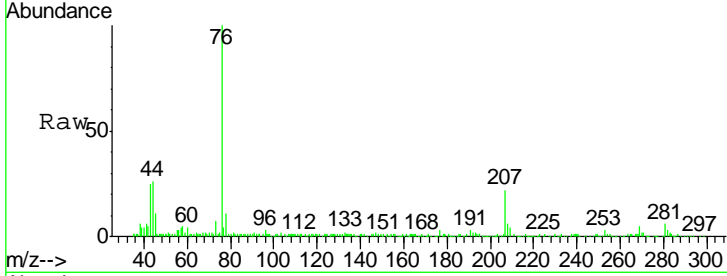




#17
 Carbon Disulfide
 Concen: 2.686 ug/l
 RT: 2.56 min Scan# 274
 Delta R.T. 0.01 min
 Lab File: VX015798.D
 Acq: 21 Apr 2020 16:39

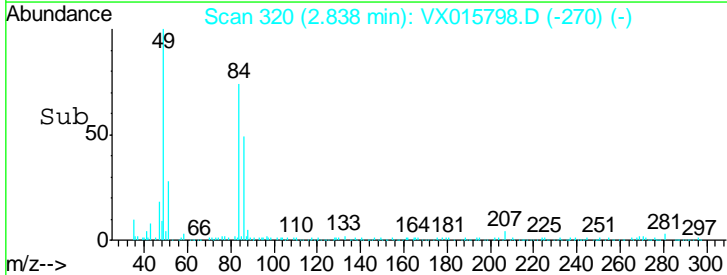
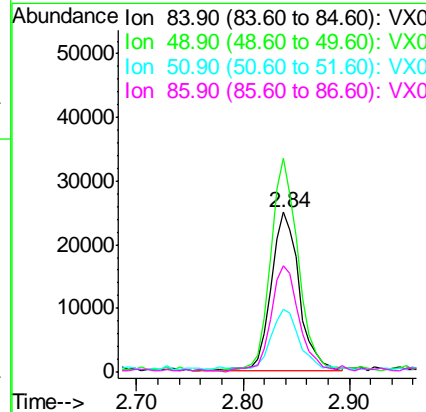
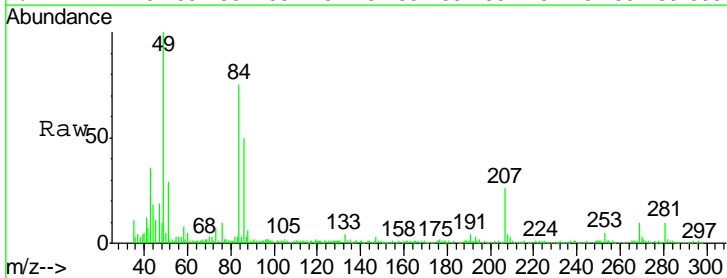
Instrument : MSVOA_X
 ClientSampled : TP-4-D

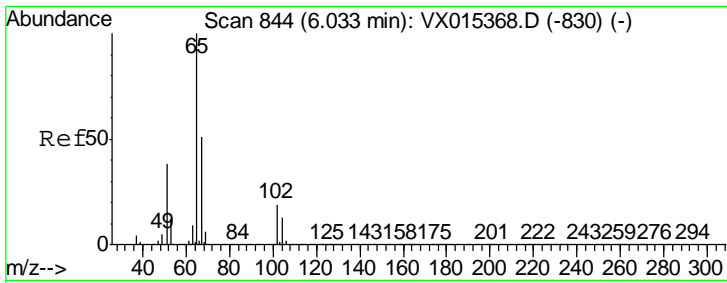
Tgt Ion	Resp	Lower	Upper
76	100		
78	10.2	7.1	10.7



#20
 Methylene Chloride
 Concen: 3.888 ug/l
 RT: 2.84 min Scan# 320
 Delta R.T. 0.01 min
 Lab File: VX015798.D
 Acq: 21 Apr 2020 16:39

Tgt Ion	Resp	Lower	Upper
84	100		
49	133.9	111.3	166.9
51	36.4	34.0	51.0
86	66.3	52.5	78.7

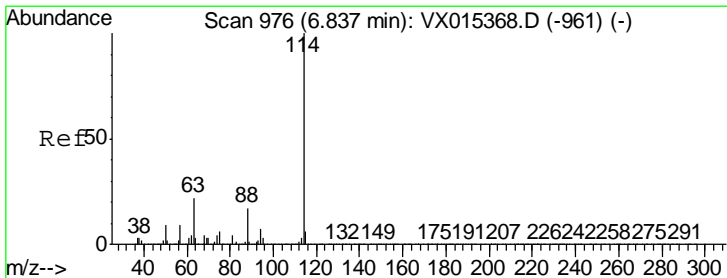
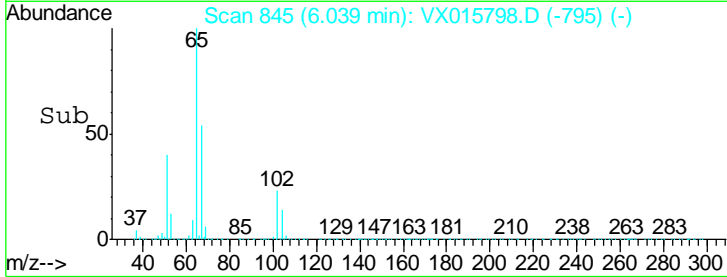
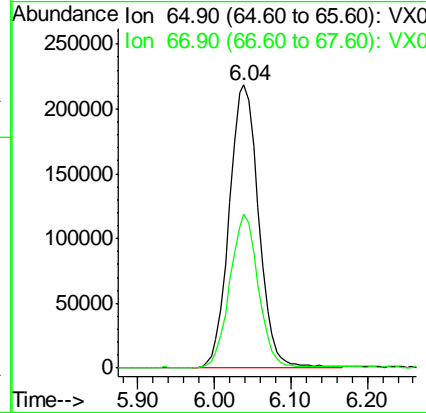
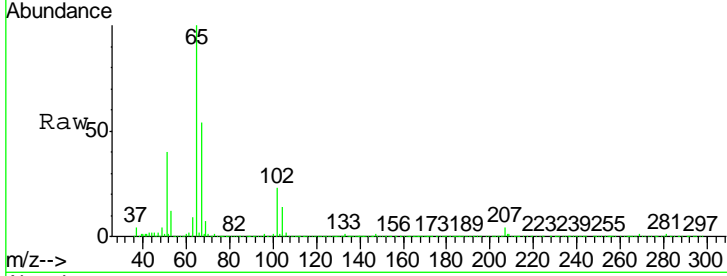




#33
 1,2-Dichloroethane-d4
 Concen: 39.522 ug/l
 RT: 6.04 min Scan# 845
 Delta R.T. 0.01 min
 Lab File: VX015798.D
 Acq: 21 Apr 2020 16:39

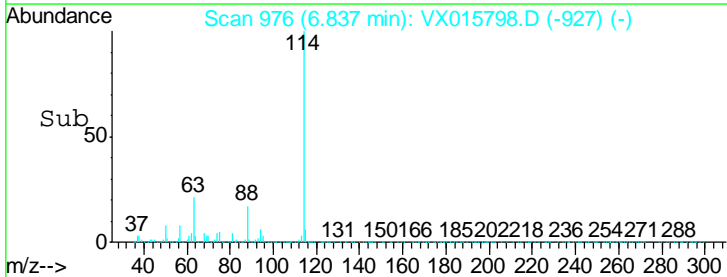
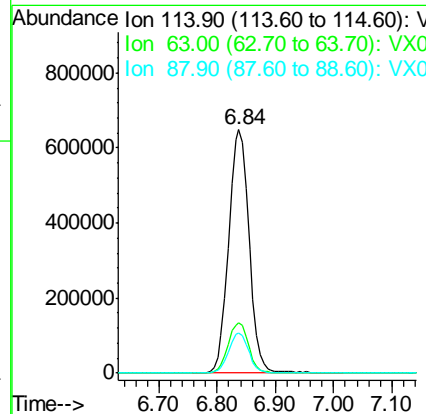
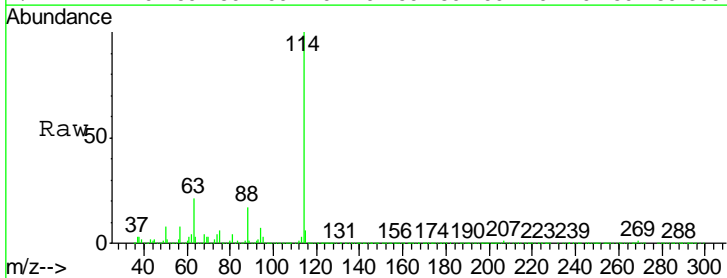
Instrument :
 MSVOA_X
 ClientSampled :
 TP-4-D

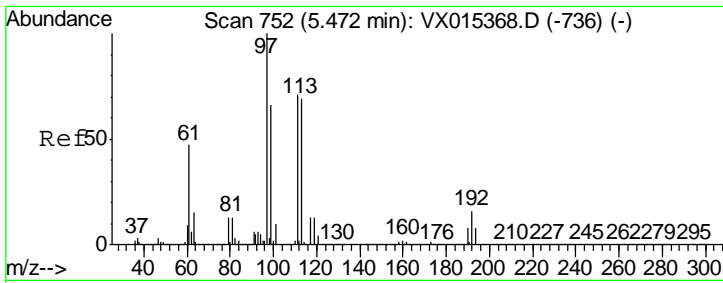
Tgt Ion: 65 Resp: 581657
 Ion Ratio Lower Upper
 65 100
 67 52.2 0.0 102.6



#34
 1,4-Difluorobenzene
 Concen: 50.000 ug/l
 RT: 6.84 min Scan# 976
 Delta R.T. 0.00 min
 Lab File: VX015798.D
 Acq: 21 Apr 2020 16:39

Tgt Ion: 114 Resp: 1591906
 Ion Ratio Lower Upper
 114 100
 63 20.7 0.0 44.2
 88 16.6 0.0 33.8

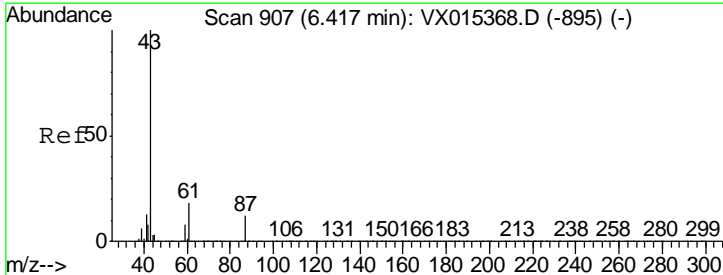
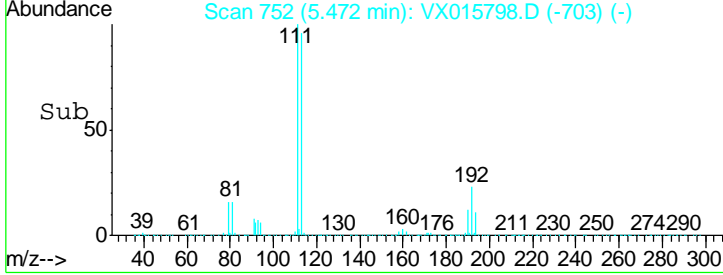
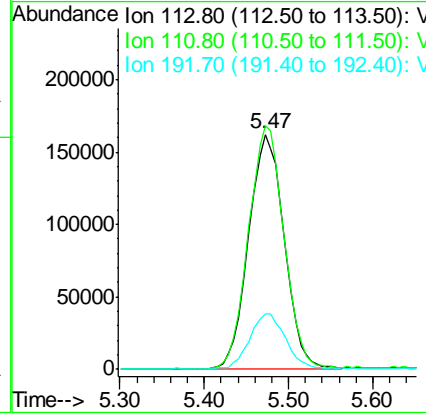
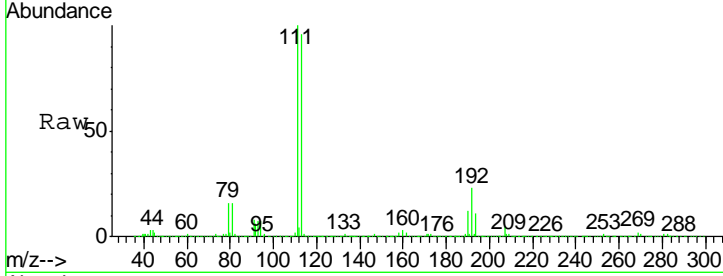




#35
 Dibromofluoromethane
 Concen: 45.597 ug/l
 RT: 5.47 min Scan# 752
 Delta R.T. 0.00 min
 Lab File: VX015798.D
 Acq: 21 Apr 2020 16:39

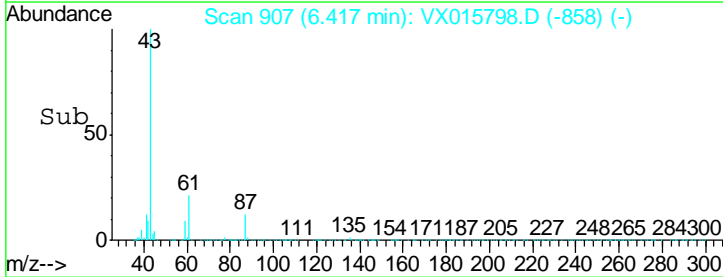
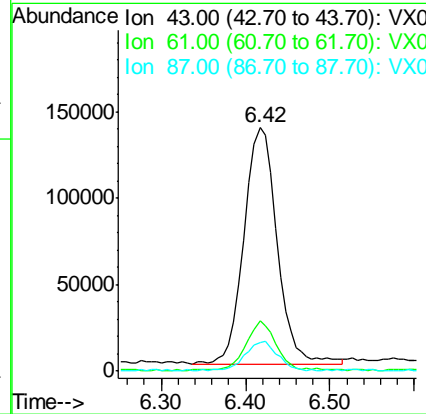
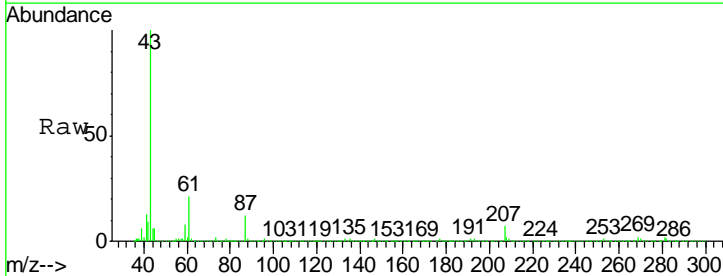
Instrument :
 MSVOA_X
 ClientSampled :
 TP-4-D

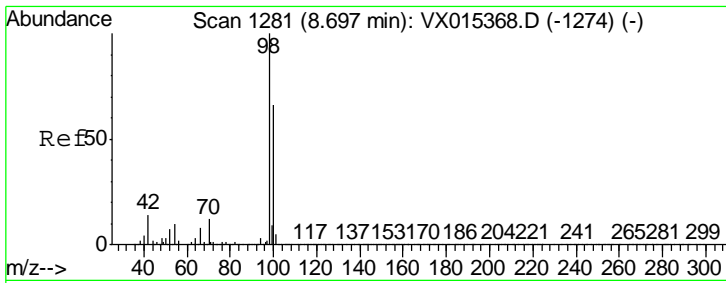
Tgt Ion	Resp	Lower	Upper
113	463993		
111	103.5	81.5	122.3
192	23.7	17.8	26.6



#43
 Isopropyl Acetate
 Concen: 11.314 ug/l
 RT: 6.42 min Scan# 907
 Delta R.T. 0.00 min
 Lab File: VX015798.D
 Acq: 21 Apr 2020 16:39

Tgt Ion	Resp	Lower	Upper
43	364775		
61	18.1	14.8	22.2
87	11.9	9.4	14.0

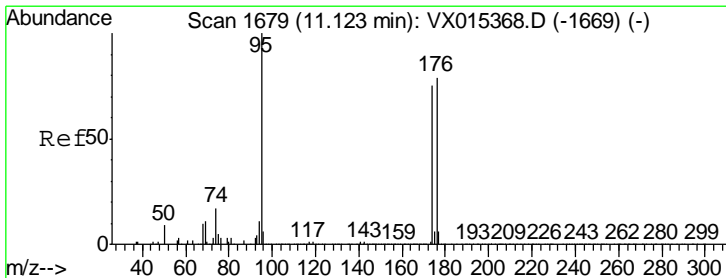
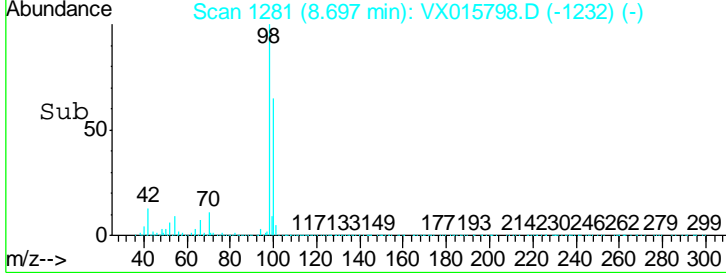
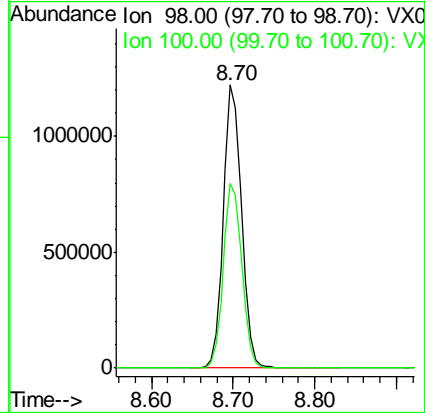
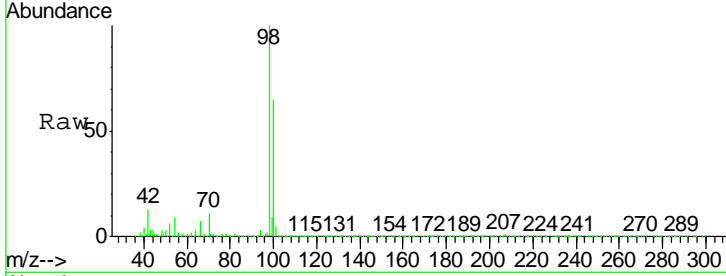




#50
 Toluene-d8
 Concen: 50.824 ug/l
 RT: 8.70 min Scan# 1281
 Delta R.T. 0.00 min
 Lab File: VX015798.D
 Acq: 21 Apr 2020 16:39

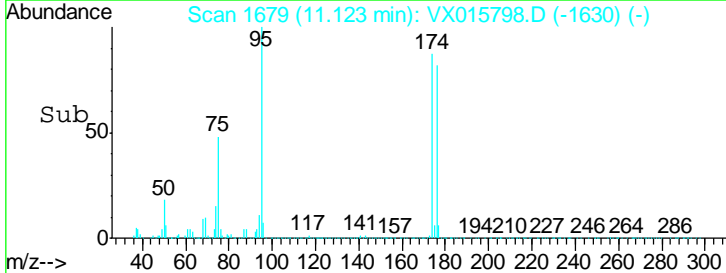
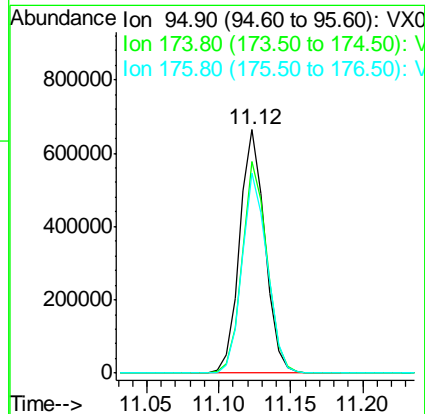
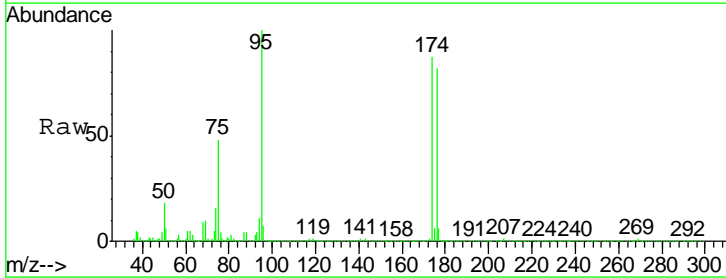
Instrument :
 MSVOA_X
 ClientSampled :
 TP-4-D

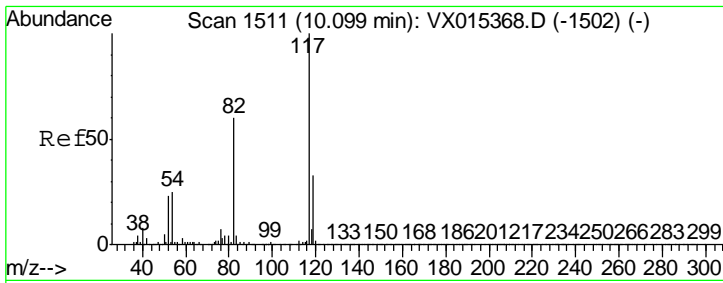
Tgt Ion: 98 Resp: 1904129
 Ion Ratio Lower Upper
 98 100
 100 66.6 53.5 80.3



#62
 4-Bromofluorobenzene
 Concen: 53.229 ug/l
 RT: 11.12 min Scan# 1679
 Delta R.T. 0.00 min
 Lab File: VX015798.D
 Acq: 21 Apr 2020 16:39

Tgt Ion: 95 Resp: 810453
 Ion Ratio Lower Upper
 95 100
 174 85.4 0.0 158.6
 176 81.8 0.0 159.0



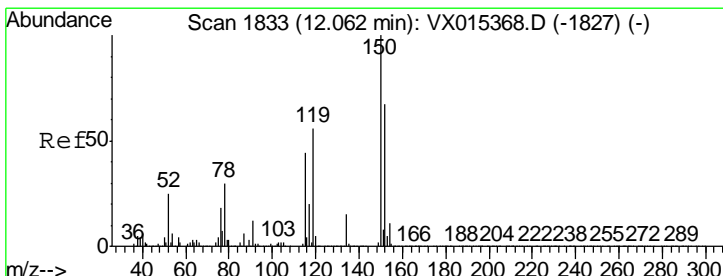
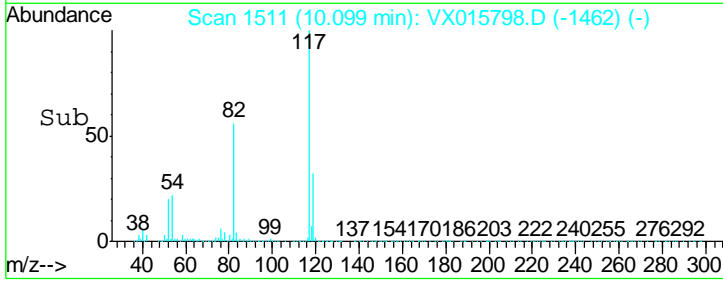
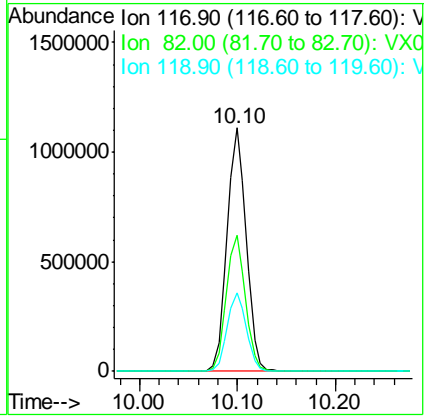
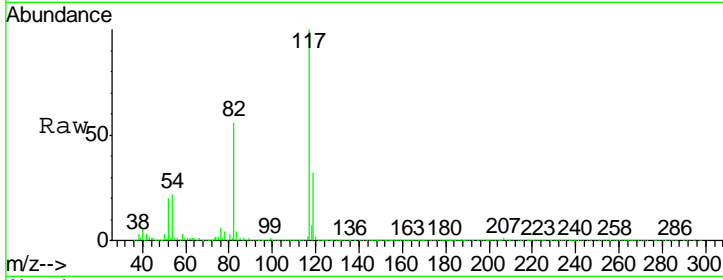


#63
 Chlorobenzene-d5
 Concen: 50.000 ug/l
 RT: 10.10 min Scan# 1511
 Delta R.T. 0.00 min
 Lab File: VX015798.D
 Acq: 21 Apr 2020 16:39

Instrument : MSVOA_X
 ClientSampled : TP-4-D

Tgt Ion: 117 Resp: 1511301

Ion	Ratio	Lower	Upper
117	100		
82	55.7	47.8	71.8
119	31.9	26.8	40.2



#72
 1,4-Dichlorobenzene-d4
 Concen: 50.000 ug/l
 RT: 12.06 min Scan# 1833
 Delta R.T. 0.00 min
 Lab File: VX015798.D
 Acq: 21 Apr 2020 16:39

Tgt Ion: 152 Resp: 867008

Ion	Ratio	Lower	Upper
152	100		
115	56.8	39.0	116.9
150	156.1	0.0	340.8

