

Data Path : Z:\VOASRV\HPCHEM1\MSVOA X\DATA\VX042120\
 Data File : VX015812.D
 Acq On : 21 Apr 2020 23:04
 Operator : JC/SP
 Sample : VX0421WBL02
 Misc : 5.0mL/MSVOA X/WATER
 ALS Vial : 34 Sample Multiplier: 1

Instrument :
 MSVOA_X
 ClientSampleId :
 VX0421WBL02

Integration Parameters: RTEINT.P
 Integrator: RTE
 Smoothing : ON Filtering: 5
 Sampling : 1 Min Area: 3 % of largest Peak
 Start Thrs: 0.2 Max Peaks: 100
 Stop Thrs : 0 Peak Location: TOP

If leading or trailing edge < 100 prefer < Baseline drop else tangent >
 Peak separation: 5

Method : Z:\VOASRV\HPCHEM1\MSVOA_X\METHOD\82X032720W.M
 Title : SW846 8260

Signal : TIC

peak #	R.T. min	first scan	max scan	last scan	PK TY	peak height	corr. area	corr. % max.	% of total
1	1.064	25	29	94	rBV	18098493	92276721	100.00%	77.791%
2	5.472	739	752	763	rBV	510025	1441292	1.56%	1.215%
3	5.636	768	779	791	rVV2	915703	2589319	2.81%	2.183%
4	6.039	836	845	856	rBV	546750	1420694	1.54%	1.198%
5	6.837	967	976	987	rBV	1403019	3344253	3.62%	2.819%
6	8.697	1274	1281	1290	rBV	2996180	4745808	5.14%	4.001%
7	10.099	1505	1511	1521	rBV	3206213	4275929	4.63%	3.605%
8	11.123	1674	1679	1686	rVB	2883688	3648728	3.95%	3.076%
9	12.062	1828	1833	1842	rVB	3840077	4879207	5.29%	4.113%

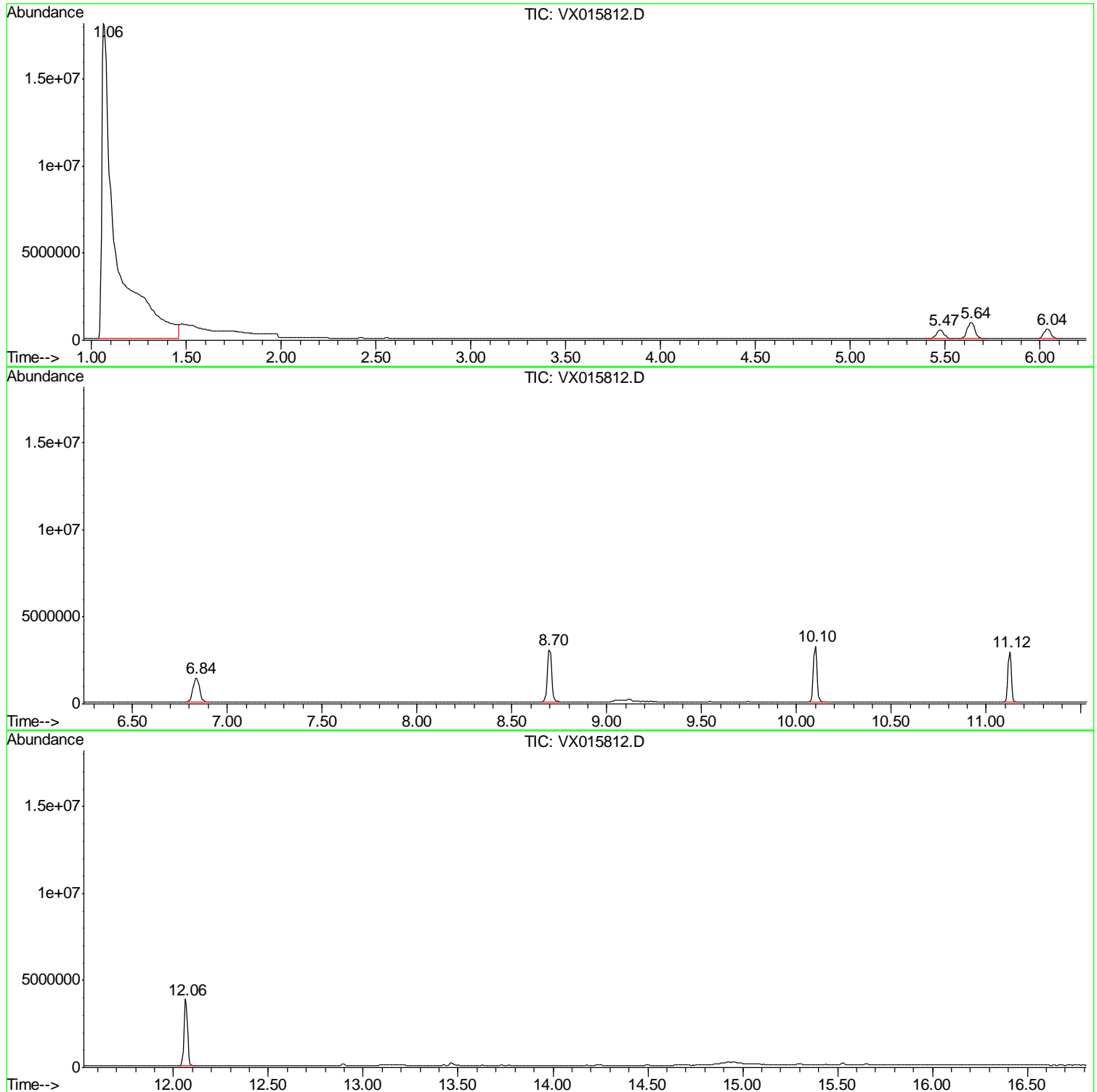
Sum of corrected areas: 118621951

Data Path : Z:\VOASRV\HPCHEM1\MSVOA X\DATA\VX042120\
Data File : VX015812.D
Acq On : 21 Apr 2020 23:04
Operator : JC/SP
Sample : VX0421WBL02
Misc : 5.0mL/MSVOA X/WATER
ALS Vial : 34 Sample Multiplier: 1

Instrument :
MSVOA_X
ClientSampled :
VX0421WBL02

Quant Method : Z:\VOASRV\HPCHEM1\MSVOA_X\METHOD\82X032720W.M
Quant Title : SW846 8260

TIC Library : C:\DATABASE\NIST11.L
TIC Integration Parameters: LSCINT.P



Data Path : Z:\VOASRV\HPCHEM1\MSVOA_X\DATA\VX042120\
Data File : VX015812.D
Acq On : 21 Apr 2020 23:04
Operator : JC/SP
Sample : VX0421WBL02
Misc : 5.0mL/MSVOA_X/WATER
ALS Vial : 34 Sample Multiplier: 1

Instrument :
MSVOA_X
ClientSampleId :
VX0421WBL02

Quant Method : Z:\VOASRV\HPCHEM1\MSVOA_X\METHOD\82X032720W.M
Quant Title : SW846 8260

TIC Library : C:\DATABASE\NIST11.L
TIC Integration Parameters: LSCINT.P

No Library Search Compounds Detected

Data Path : Z:\VOASRV\HPCHEM1\MSVOA_X\DATA\VX042120\
Data File : VX015812.D
Acq On : 21 Apr 2020 23:04
Operator : JC/SP
Sample : VX0421WBL02
Misc : 5.0mL/MSVOA_X/WATER
ALS Vial : 34 Sample Multiplier: 1

Instrument :
MSVOA_X
ClientSampleId :
VX0421WBL02

Quant Method : Z:\VOASRV\HPCHEM1\MSVOA_X\METHOD\82X032720W.M
Quant Title : SW846 8260

TIC Library : C:\DATABASE\NIST11.L
TIC Integration Parameters: LSCINT.P

TIC Top Hit name	RT	EstConc	Units	Response	--Internal Standard--			
					#	RT	Resp	Conc
