

Data Path : Z:\voasrv\HPCHEM1\MSVOA_X\Data\VX042122\
 Data File : VX028245.D
 Acq On : 21 Apr 2022 16:46
 Operator : JC/MD
 Sample : N2459-12
 Misc : 5.0mL/MSVOA_X/WATER
 ALS Vial : 16 Sample Multiplier: 1

Instrument :
 MSVOA_X
 ClientSampleId :
 31582

Integration Parameters: RTEINT.P

Integrator: RTE
 Smoothing : ON
 Sampling : 1
 Start Thrs : 0.2
 Stop Thrs : 0

Filtering: 5
 Min Area: 3 % of largest Peak
 Max Peaks: 100
 Peak Location: TOP

If leading or trailing edge < 100 prefer < Baseline drop else tangent >
 Peak separation: 5

Method : Z:\voasrv\HPCHEM1\MSVOA_X\Method\82X041922W.M
 Title : SW846 8260

Signal : TIC: VX028245.D\data.ms

peak #	R.T. min	first scan	max scan	last scan	PK TY	peak height	corr. area	corr. % max.	% of total
1	2.526	229	236	245	rBV	12544	23819	1.01%	0.183%
2	5.391	694	706	722	rBV	289770	848286	35.86%	6.515%
3	5.556	722	733	747	rVB	385480	1096922	46.37%	8.425%
4	5.958	786	799	812	rBV	291324	778050	32.89%	5.976%
5	6.763	922	931	949	rBV	616181	1449058	61.26%	11.129%
6	8.653	1234	1241	1249	rBV	1492725	2365557	100.00%	18.168%
7	8.720	1249	1252	1260	rVB	14622	25229	1.07%	0.194%
8	10.055	1465	1471	1480	rBV	1369021	1813926	76.68%	13.932%
9	10.305	1507	1512	1518	rBV	43868	62299	2.63%	0.478%
10	10.646	1563	1568	1577	rVB	26727	36621	1.55%	0.281%
11	11.079	1634	1639	1654	rVB	1260185	1660765	70.21%	12.755%
12	11.384	1684	1689	1697	rBV2	11281	25808	1.09%	0.198%
13	12.024	1788	1794	1801	rBV	1456500	1783118	75.38%	13.695%
14	12.244	1822	1830	1833	rBV3	14650	24646	1.04%	0.189%
15	12.317	1838	1842	1850	rVB4	16469	25650	1.08%	0.197%
16	13.164	1974	1981	1986	rBV6	19540	36149	1.53%	0.278%
17	13.292	1998	2002	2007	rBV2	62273	85591	3.62%	0.657%
18	13.420	2018	2023	2033	rVB	55438	80421	3.40%	0.618%
19	13.585	2046	2050	2055	rVV3	26962	43167	1.82%	0.332%
20	13.664	2060	2063	2069	rVB2	29290	44449	1.88%	0.341%
21	13.853	2088	2094	2100	rVB	46780	67010	2.83%	0.515%
22	13.926	2100	2106	2111	rBV2	48476	74972	3.17%	0.576%
23	14.079	2126	2131	2134	rBV2	27744	36758	1.55%	0.282%
24	14.231	2148	2156	2162	rBV3	82188	151097	6.39%	1.160%
25	14.371	2175	2179	2183	rVB	36238	48315	2.04%	0.371%
26	14.481	2193	2197	2203	rBV2	79965	105668	4.47%	0.812%
27	14.615	2215	2219	2222	rBV	49685	70609	2.98%	0.542%
28	14.670	2226	2228	2233	rVB	32679	41265	1.74%	0.317%
29	14.908	2262	2267	2272	rBV3	22791	41113	1.74%	0.316%
30	15.182	2305	2312	2319	rBV2	35606	73946	3.13%	0.568%

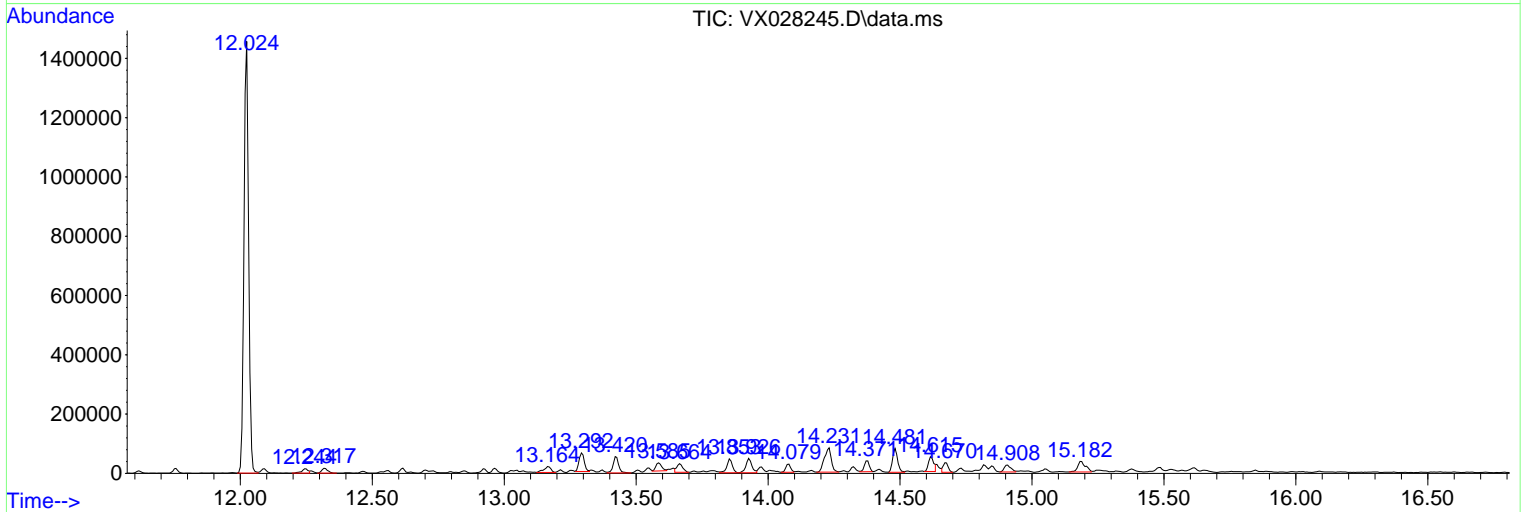
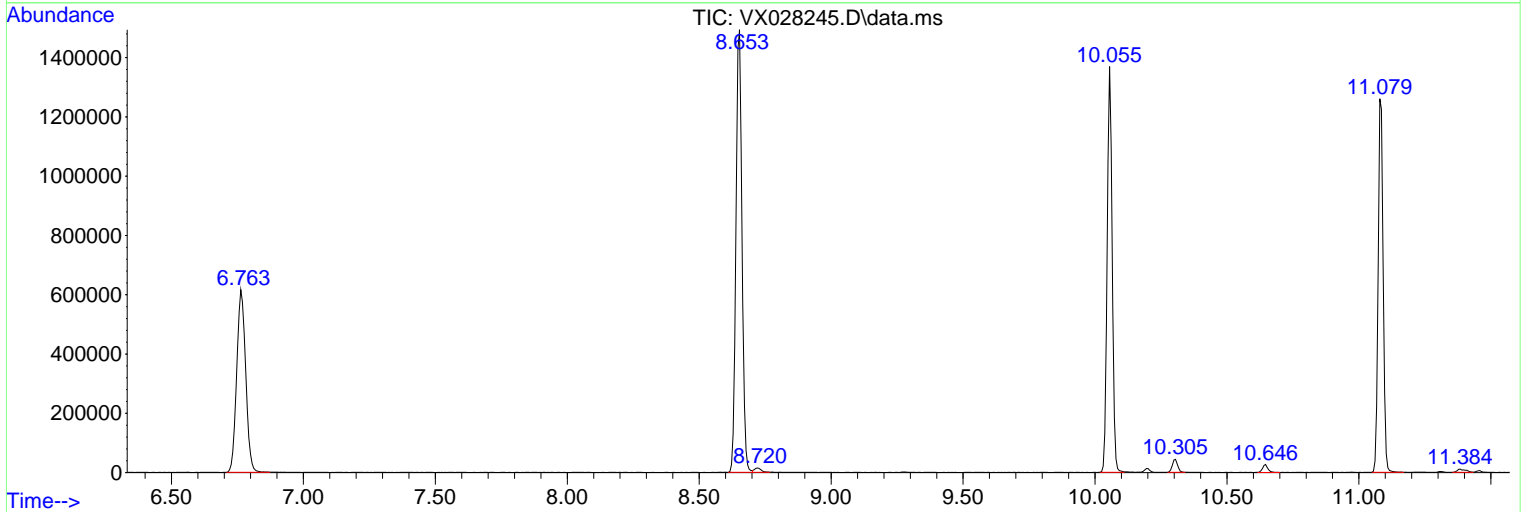
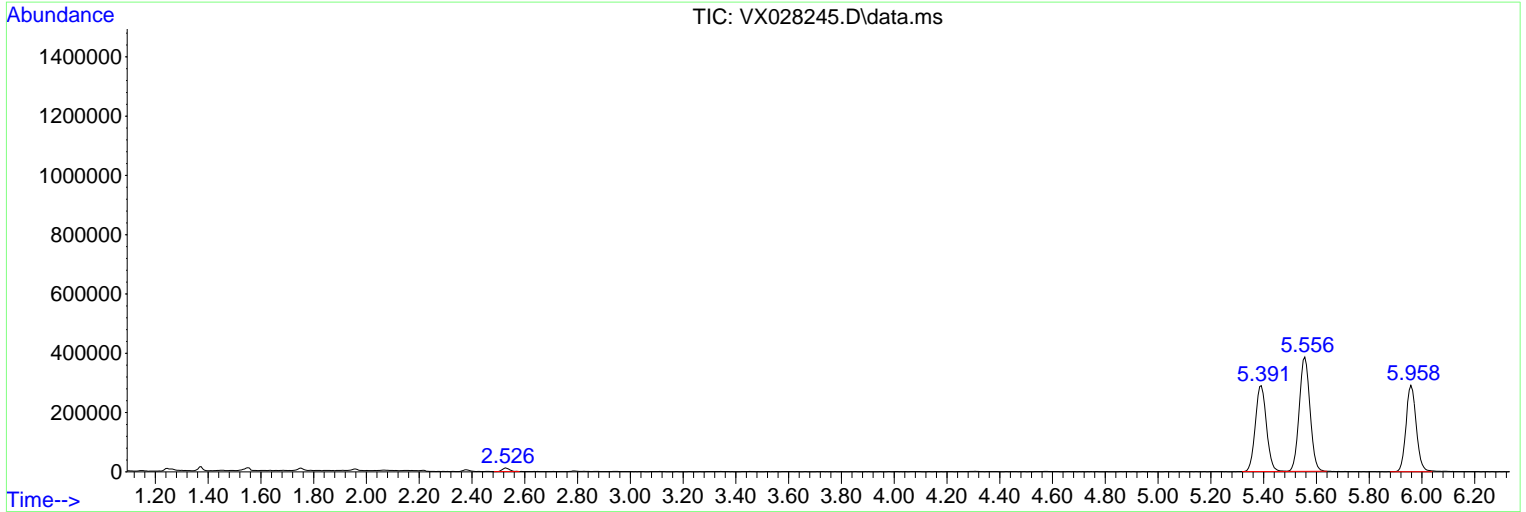
Sum of corrected areas: 13020284

Data Path : Z:\voasrv\HPCHEM1\MSVOA_X\Data\VX042122\
 Data File : VX028245.D
 Acq On : 21 Apr 2022 16:46
 Operator : JC/MD
 Sample : N2459-12
 Misc : 5.0mL/MSVOA_X/WATER
 ALS Vial : 16 Sample Multiplier: 1

Instrument :
 MSVOA_X
 ClientSampleId :
 31582

Quant Method : Z:\voasrv\HPCHEM1\MSVOA_X\Method\82X041922W.M
 Quant Title : SW846 8260

TIC Library : C:\Database\NIST20.L
 TIC Integration Parameters: LSCINT.P



Library Search Compound Report

Data Path : Z:\voasrv\HPCHEM1\MSVOA_X\Data\VX042122\
Data File : VX028245.D
Acq On : 21 Apr 2022 16:46
Operator : JC/MD
Sample : N2459-12
Misc : 5.0mL/MSVOA_X/WATER
ALS Vial : 16 Sample Multiplier: 1

Instrument :
MSVOA_X
ClientSampleId :
31582

Quant Method : Z:\voasrv\HPCHEM1\MSVOA_X\Method\82X041922W.M
Quant Title : SW846 8260

TIC Library : C:\Database\NIST20.L
TIC Integration Parameters: LSCINT.P

No Library Search Compounds Detected

Data Path : Z:\voasrv\HPCHEM1\MSVOA_X\Data\VX042122\
Data File : VX028245.D
Acq On : 21 Apr 2022 16:46
Operator : JC/MD
Sample : N2459-12
Misc : 5.0mL/MSVOA_X/WATER
ALS Vial : 16 Sample Multiplier: 1

Instrument :
MSVOA_X
ClientSampleId :
31582

Quant Method : Z:\voasrv\HPCHEM1\MSVOA_X\Method\82X041922W.M
Quant Title : SW846 8260

TIC Library : C:\Database\NIST20.L
TIC Integration Parameters: LSCINT.P

TIC Top Hit name	RT	EstConc	Units	Response	--Internal Standard--		
					#	RT	Resp Conc
