

Data Path : Z:\VOASRV\HPCHEM1\MSVOA X\DATA\VX042320\
 Data File : VX015919.D
 Acq On : 24 Apr 2020 02:50
 Operator : JC/SP
 Sample : L2378-12
 Misc : 5.0mL/MSVOA X/WATER
 ALS Vial : 44 Sample Multiplier: 1

Instrument :
 MSVOA_X
 ClientSampleId :
 TP-2-S

Quant Time: Apr 24 03:44:10 2020
 Quant Method : Z:\VOASRV\HPCHEM1\MSVOA_X\METHOD\82X042220W.M
 Quant Title : SW846 8260
 QLast Update : Thu Apr 23 04:36:12 2020
 Response via : Initial Calibration

| Internal Standards | R.T. | QIon | Response | Conc | Units | Dev(Min) |
|----------------------------|-------|------|----------|-------|-------|----------|
| 1) Pentafluorobenzene | 5.63 | 168 | 857087 | 50.00 | ug/l | 0.00 |
| 34) 1,4-Difluorobenzene | 6.84 | 114 | 1282134 | 50.00 | ug/l | 0.00 |
| 63) Chlorobenzene-d5 | 10.10 | 117 | 1284651 | 50.00 | ug/l | 0.00 |
| 72) 1,4-Dichlorobenzene-d4 | 12.06 | 152 | 726362 | 50.00 | ug/l | 0.00 |

System Monitoring Compounds

| | | | | | | |
|---------------------------|--------|-----|----------|-------|---------|------|
| 33) 1,2-Dichloroethane-d4 | 6.04 | 65 | 482334 | 49.48 | ug/l | 0.00 |
| Spiked Amount | 50.000 | | Recovery | = | 98.96% | |
| 35) Dibromofluoromethane | 5.47 | 113 | 387050 | 52.30 | ug/l | 0.00 |
| Spiked Amount | 50.000 | | Recovery | = | 104.60% | |
| 50) Toluene-d8 | 8.70 | 98 | 1579703 | 53.02 | ug/l | 0.00 |
| Spiked Amount | 50.000 | | Recovery | = | 106.04% | |
| 62) 4-Bromofluorobenzene | 11.12 | 95 | 671435 | 54.94 | ug/l | 0.00 |
| Spiked Amount | 50.000 | | Recovery | = | 109.88% | |

Target Compounds

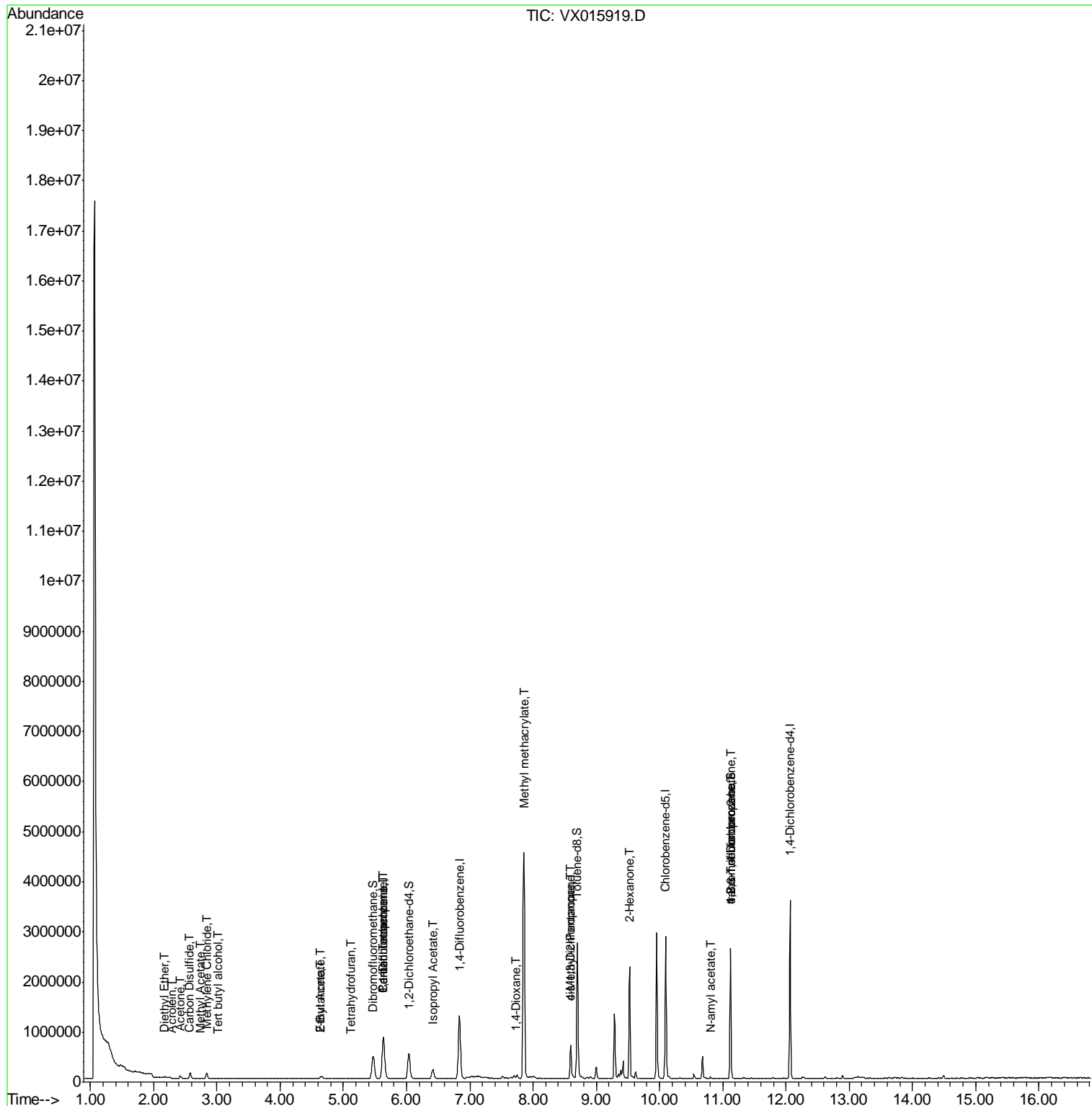
| | | | | | | Qvalue |
|--------------------------------|-------|-----|--------|--------|--------|--------|
| 8) Diethyl Ether | 2.16 | 74 | 1860 | 0.425 | ug/l | 70 |
| 11) Tert butyl alcohol | 3.01 | 59 | 3963 | 1.990 | ug/l # | 73 |
| 13) Acrolein | 2.28 | 56 | 343 | 0.291 | ug/l # | 15 |
| 16) Acetone | 2.42 | 43 | 62753 | 14.784 | ug/l | 97 |
| 17) Carbon Disulfide | 2.55 | 76 | 10081 | 0.370 | ug/l | 98 |
| 18) Methyl Acetate | 2.75 | 43 | 9606 | 0.686 | ug/l | 95 |
| 20) Methylene Chloride | 2.83 | 84 | 48241 | 5.598 | ug/l | 90 |
| 25) 2-Butanone | 4.64 | 43 | 27284 | 4.067 | ug/l | 93 |
| 29) Tetrahydrofuran | 5.12 | 42 | 2685 | 0.605 | ug/l # | 71 |
| 36) 1,1-Dichloropropene | 5.63 | 75 | 58004 | 5.103 | ug/l # | 52 |
| 37) Ethyl Acetate | 4.64 | 43 | 27284 | 2.017 | ug/l # | 72 |
| 38) Carbon Tetrachloride | 5.64 | 117 | 79712 | 7.120 | ug/l # | 16 |
| 43) Isopropyl Acetate | 6.42 | 43 | 264479 | 11.591 | ug/l | 100 |
| 48) Methyl methacrylate | 7.85 | 41 | 392198 | 34.942 | ug/l # | 47 |
| 49) 1,4-Dioxane | 7.73 | 88 | 444 | 2.093 | ug/l # | 21 |
| 51) 4-Methyl-2-Pentanone | 8.59 | 43 | 248513 | 18.868 | ug/l # | 47 |
| 54) cis-1,3-Dichloropropene | 8.59 | 75 | 105796 | 6.924 | ug/l # | 56 |
| 59) 2-Hexanone | 9.53 | 43 | 258640 | 25.777 | ug/l # | 52 |
| 74) N-amyl acetate | 10.81 | 43 | 15725 | 0.660 | ug/l # | 52 |
| 76) 1,2,3-Trichloropropane | 11.12 | 75 | 329868 | 23.882 | ug/l # | 36 |
| 81) trans-1,4-Dichloro-2-buten | 11.12 | 75 | 329868 | 57.449 | ug/l # | 12 |

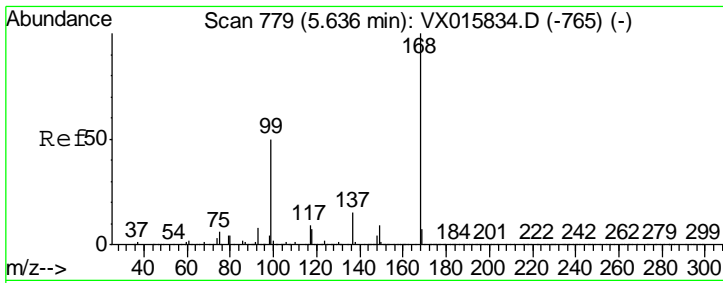
(#) = qualifier out of range (m) = manual integration (+) = signals summed

Data Path : Z:\VOASRV\HPCHEM1\MSVOA X\DATA\VX042320\
 Data File : VX015919.D
 Acq On : 24 Apr 2020 02:50
 Operator : JC/SP
 Sample : L2378-12
 Misc : 5.0mL/MSVOA X/WATER
 ALS Vial : 44 Sample Multiplier: 1

Instrument :
 MSVOA_X
 Client Sampled :
 TP-2-S

Quant Time: Apr 24 03:44:10 2020
 Quant Method : Z:\VOASRV\HPCHEM1\MSVOA_X\METHOD\82X042220W.M
 Quant Title : SW846 8260
 QLast Update : Thu Apr 23 04:36:12 2020
 Response via : Initial Calibration

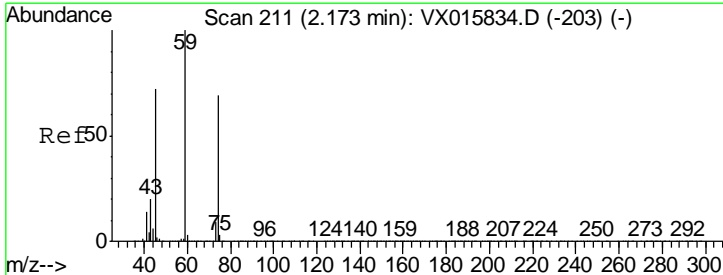
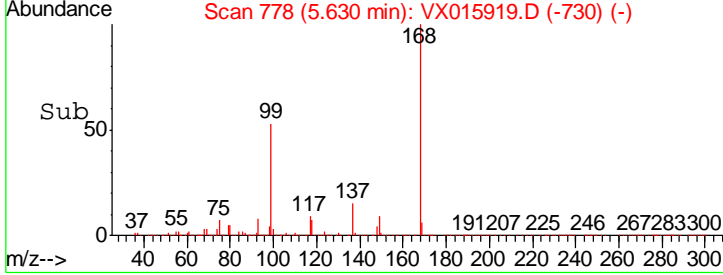
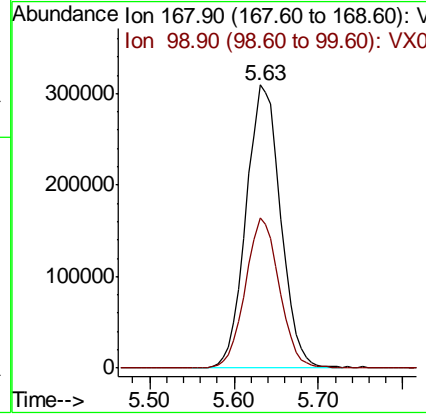
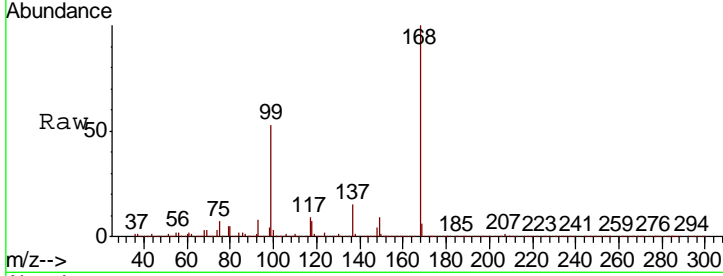




#1
 Pentafluorobenzene
 Concen: 50.000 ug/l
 RT: 5.63 min Scan# 778
 Delta R.T. -0.01 min
 Lab File: VX015919.D
 Acq: 24 Apr 2020 02:50

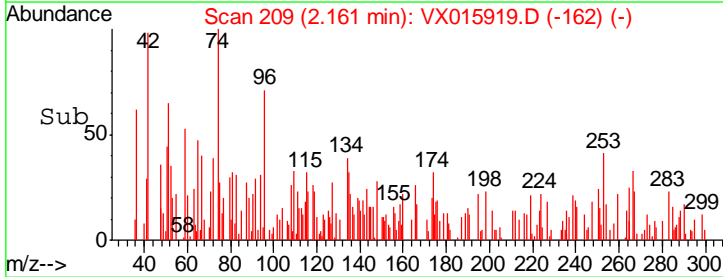
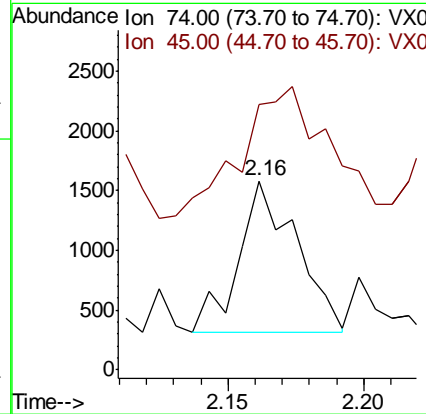
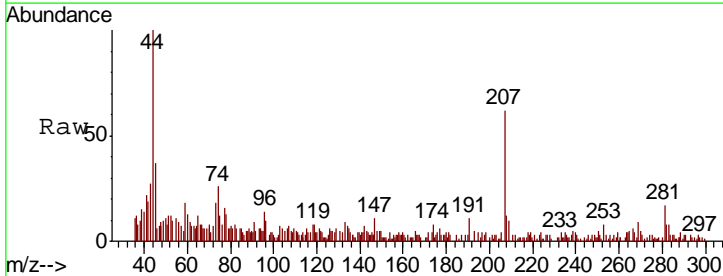
Instrument : MSVOA_X
 ClientSampled : TP-2-S

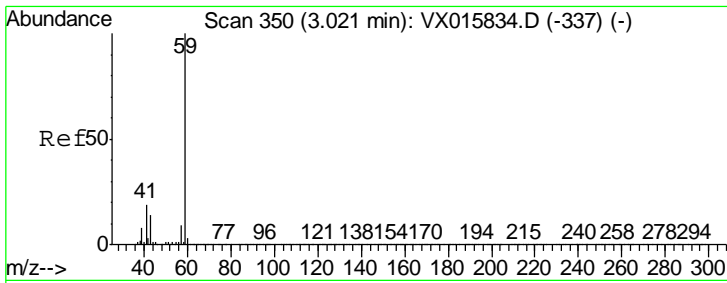
| Tgt Ion | Resp | Lower | Upper |
|---------|------|-------|-------|
| 168 | 100 | | |
| 99 | 53.1 | 40.3 | 60.5 |



#8
 Diethyl Ether
 Concen: 0.425 ug/l
 RT: 2.16 min Scan# 209
 Delta R.T. -0.01 min
 Lab File: VX015919.D
 Acq: 24 Apr 2020 02:50

| Tgt Ion | Resp | Lower | Upper |
|---------|-------|-------|-------|
| 74 | 100 | | |
| 45 | 139.2 | 53.8 | 161.4 |

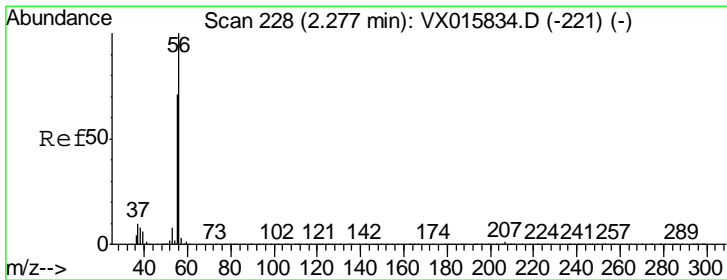
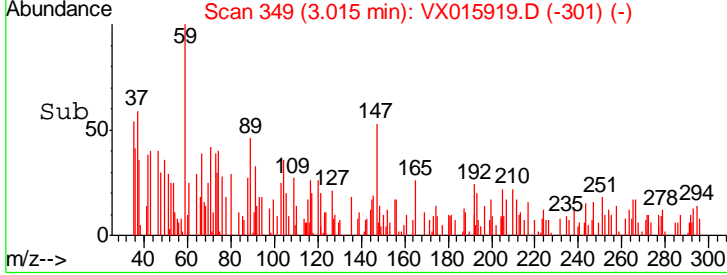
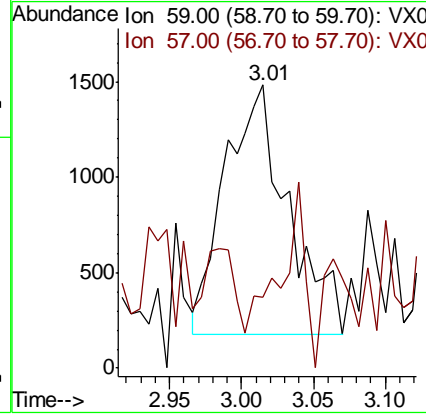
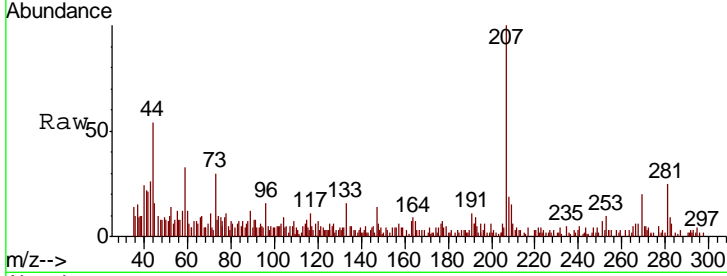




#11
 Tert butyl alcohol
 Concen: 1.990 ug/l
 RT: 3.01 min Scan# 349
 Delta R.T. -0.01 min
 Lab File: VX015919.D
 Acq: 24 Apr 2020 02:50

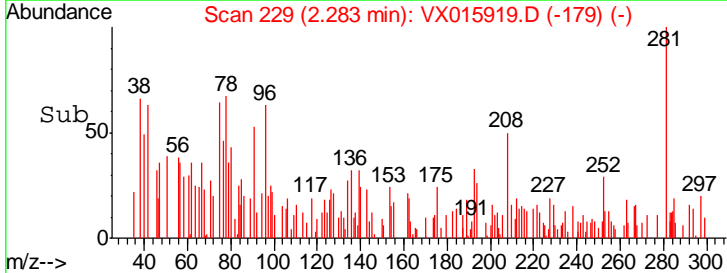
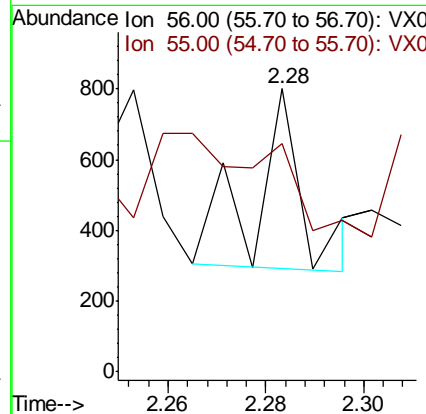
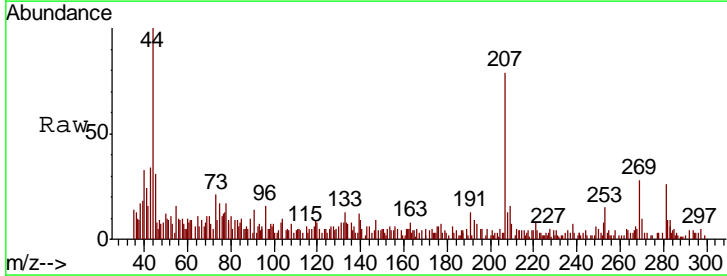
Instrument :
 MSVOA_X
ClientSampled :
 TP-2-S

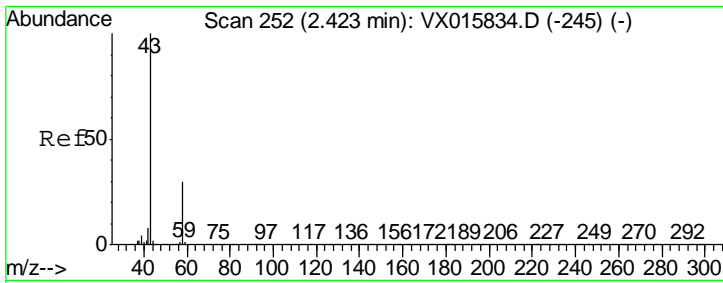
| Tgt Ion | Resp | Lower | Upper |
|---------|------|-------|-------|
| 59 | 100 | | |
| 57 | 0.0 | 8.2 | 12.2# |



#13
 Acrolein
 Concen: 0.291 ug/l
 RT: 2.28 min Scan# 229
 Delta R.T. 0.01 min
 Lab File: VX015919.D
 Acq: 24 Apr 2020 02:50

| Tgt Ion | Resp | Lower | Upper |
|---------|------|-------|-------|
| 56 | 100 | | |
| 55 | 0.0 | 56.1 | 84.1# |

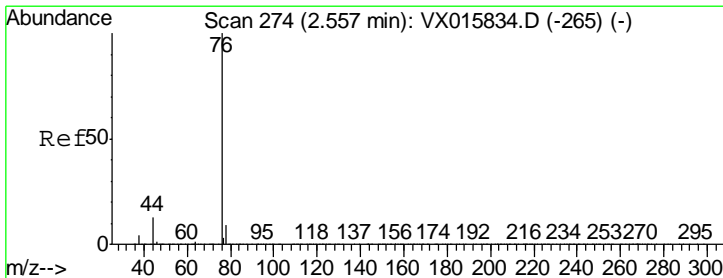
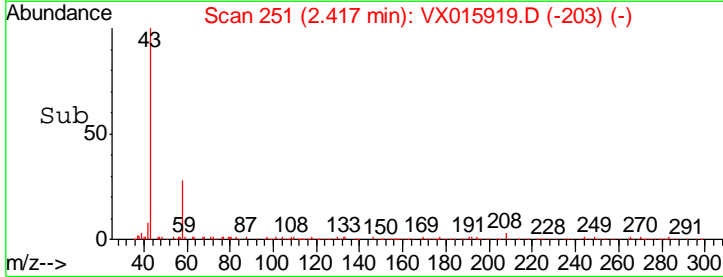
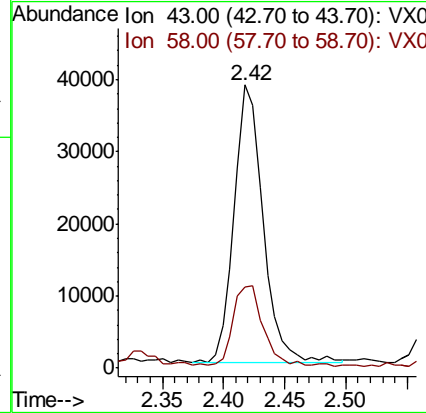
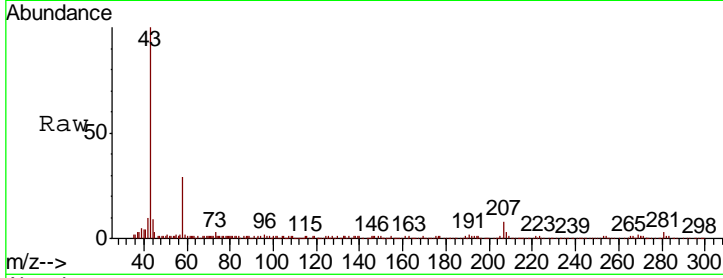




#16
 Acetone
 Concen: 14.784 ug/l
 RT: 2.42 min Scan# 251
 Delta R.T. -0.01 min
 Lab File: VX015919.D
 Acq: 24 Apr 2020 02:50

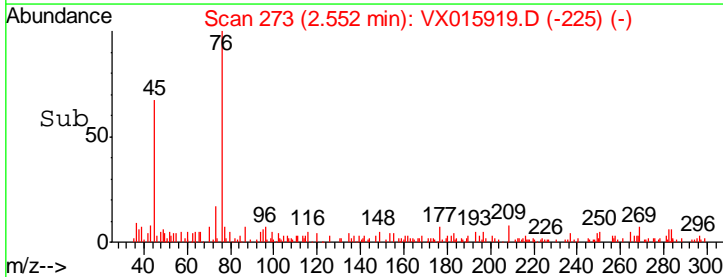
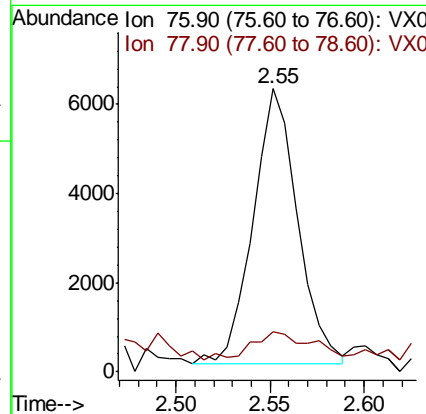
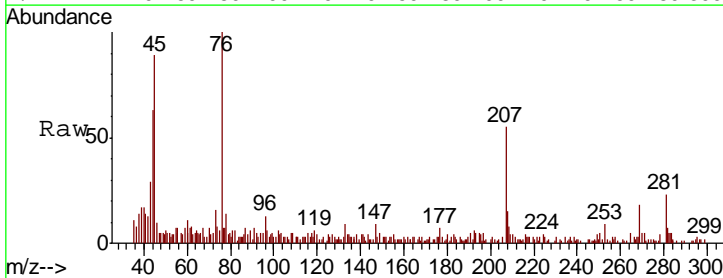
Instrument :
 MSVOA_X
 ClientSampled :
 TP-2-S

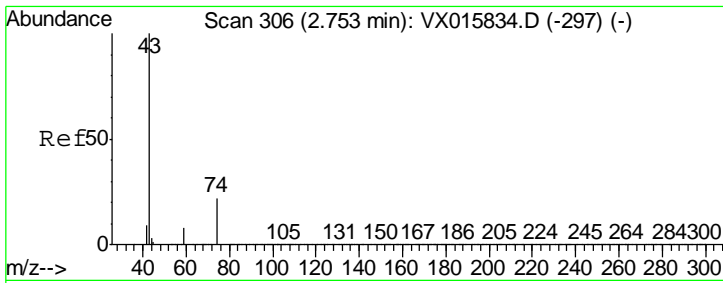
Tgt Ion: 43 Resp: 62753
 Ion Ratio Lower Upper
 43 100
 58 28.1 24.0 36.0



#17
 Carbon Disulfide
 Concen: 0.370 ug/l
 RT: 2.55 min Scan# 273
 Delta R.T. -0.01 min
 Lab File: VX015919.D
 Acq: 24 Apr 2020 02:50

Tgt Ion: 76 Resp: 10081
 Ion Ratio Lower Upper
 76 100
 78 8.5 7.4 11.2

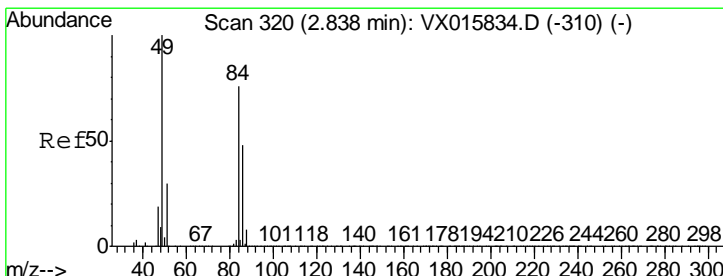
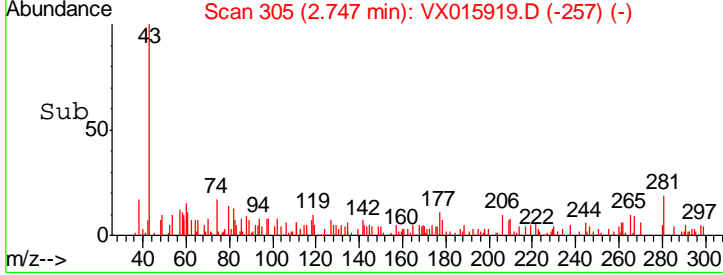
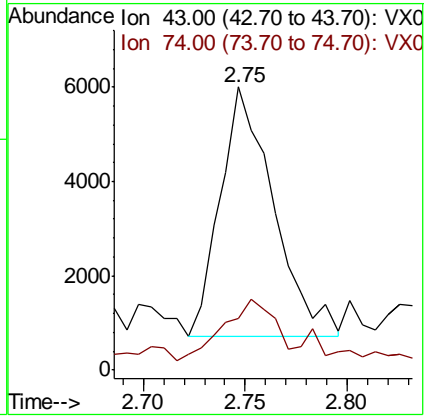
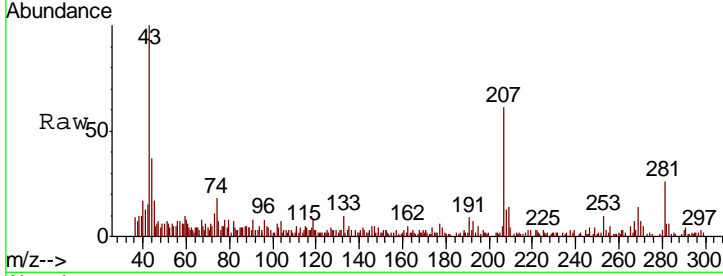




#18
 Methyl Acetate
 Concen: 0.686 ug/l
 RT: 2.75 min Scan# 305
 Delta R.T. -0.01 min
 Lab File: VX015919.D
 Acq: 24 Apr 2020 02:50

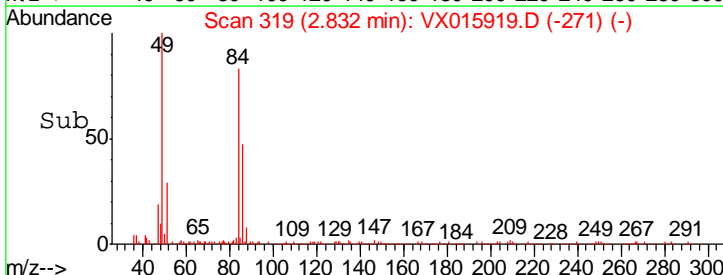
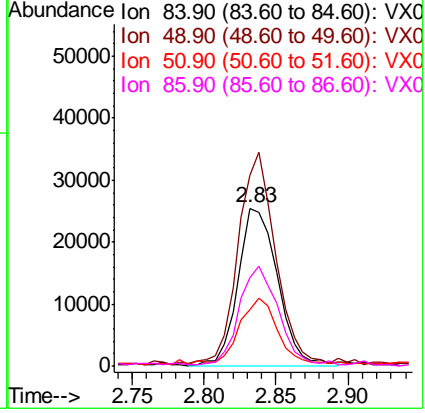
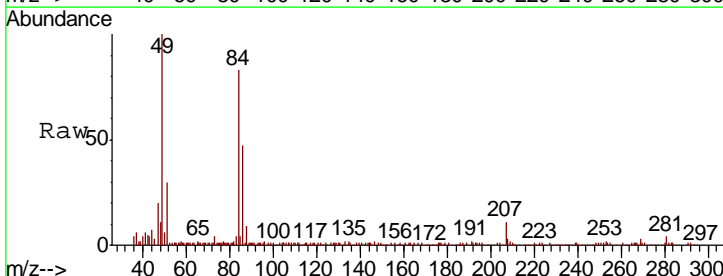
| Tgt Ion | Resp | Lower | Upper |
|---------|------|-------|-------|
| 43 | 9606 | | |
| 74 | 24.9 | 17.9 | 26.9 |

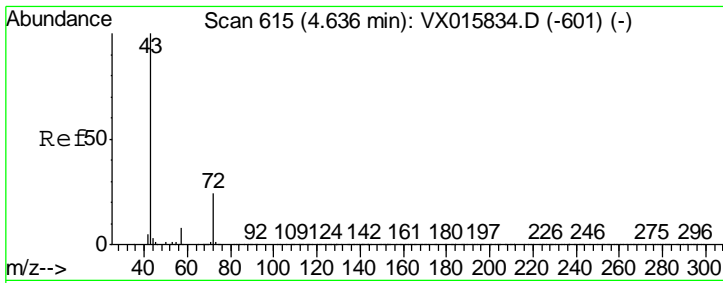
Instrument : MSVOA_X
 ClientSampled : TP-2-S



#20
 Methylene Chloride
 Concen: 5.598 ug/l
 RT: 2.83 min Scan# 319
 Delta R.T. -0.01 min
 Lab File: VX015919.D
 Acq: 24 Apr 2020 02:50

| Tgt Ion | Resp | Lower | Upper |
|---------|-------|-------|-------|
| 84 | 48241 | | |
| 49 | 118.9 | 104.9 | 157.3 |
| 51 | 34.8 | 32.0 | 48.0 |
| 86 | 54.8 | 50.4 | 75.6 |

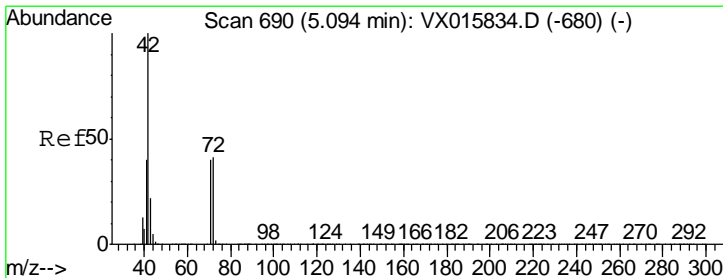
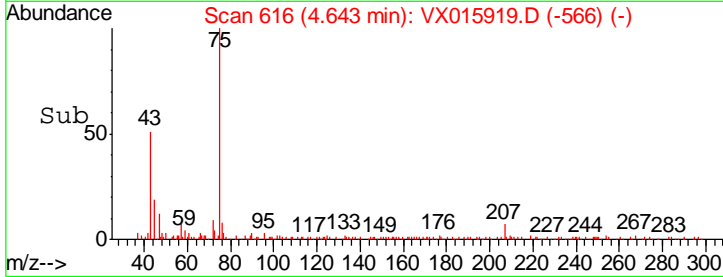
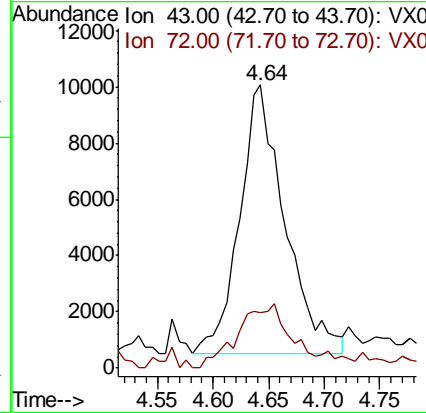
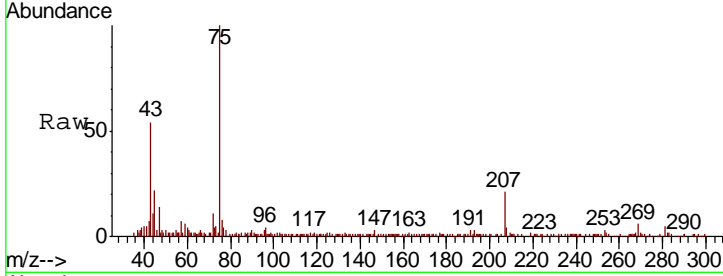




#25
 2-Butanone
 Concen: 4.067 ug/l
 RT: 4.64 min Scan# 616
 Delta R.T. 0.01 min
 Lab File: VX015919.D
 Acq: 24 Apr 2020 02:50

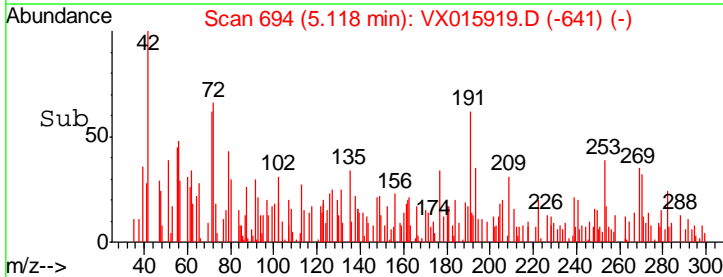
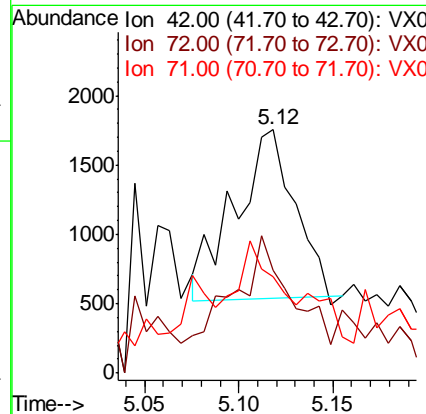
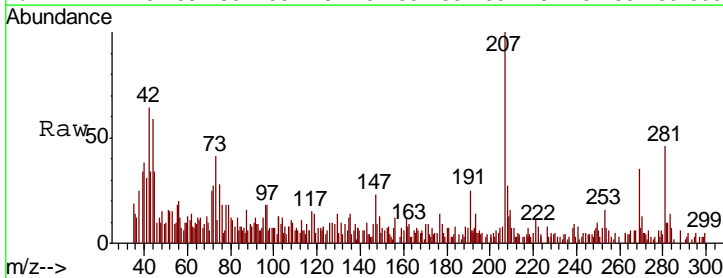
Instrument :
 MSVOA_X
 ClientSampled :
 TP-2-S

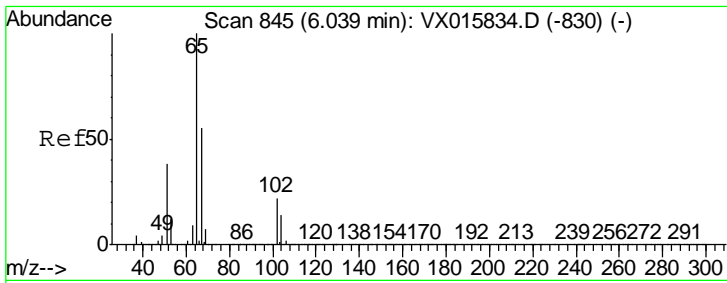
| Tgt Ion | Ratio | Lower | Upper |
|---------|-------|-------|-------|
| 43 | 100 | | |
| 72 | 20.8 | 19.4 | 29.2 |



#29
 Tetrahydrofuran
 Concen: 0.605 ug/l
 RT: 5.12 min Scan# 694
 Delta R.T. 0.02 min
 Lab File: VX015919.D
 Acq: 24 Apr 2020 02:50

| Tgt Ion | Ratio | Lower | Upper |
|---------|-------|-------|-------|
| 42 | 100 | | |
| 72 | 59.2 | 33.0 | 49.6# |
| 71 | 19.8 | 30.6 | 45.8# |

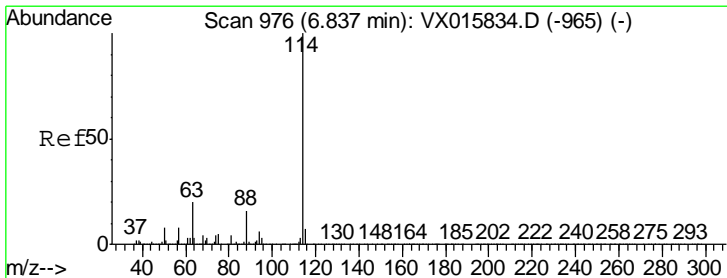
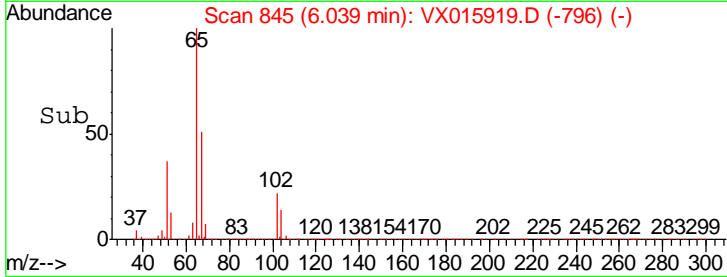
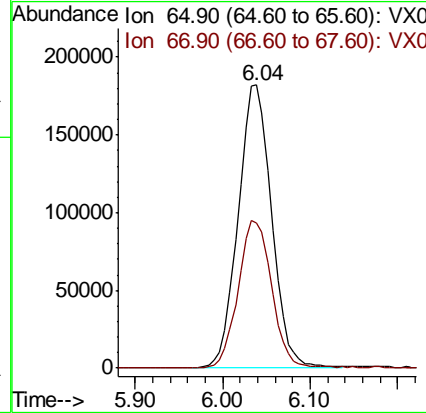
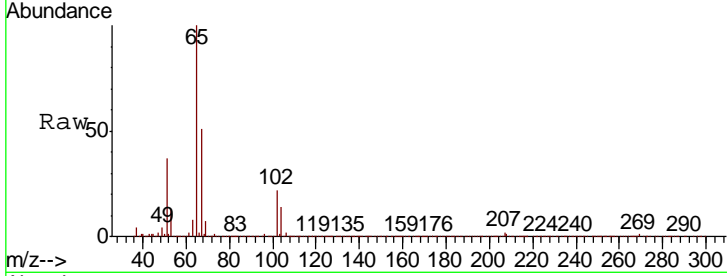




#33
 1,2-Dichloroethane-d4
 Concen: 49.480 ug/l
 RT: 6.04 min Scan# 845
 Delta R.T. 0.00 min
 Lab File: VX015919.D
 Acq: 24 Apr 2020 02:50

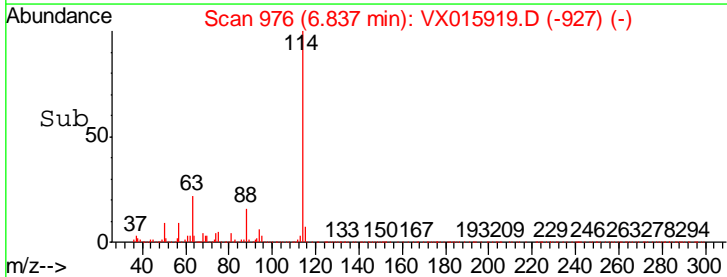
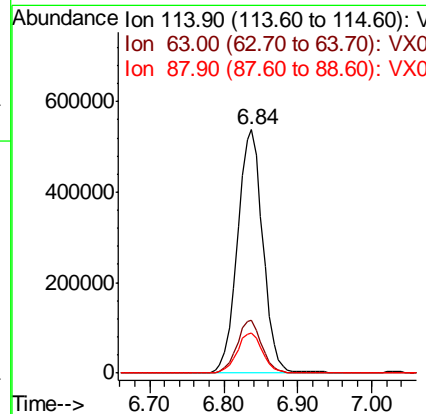
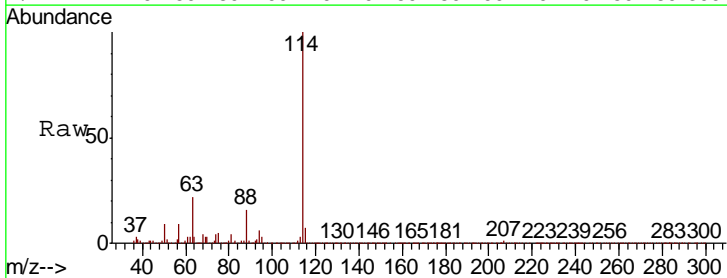
Instrument :
 MSVOA_X
 ClientSampled :
 TP-2-S

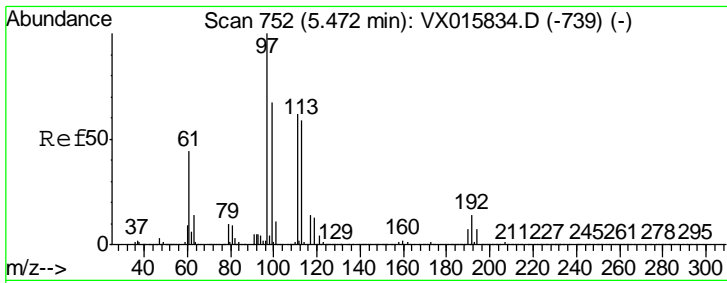
| Tgt Ion | Resp | Lower | Upper |
|---------|------|-------|-------|
| 65 | 100 | | |
| 67 | 52.1 | 0.0 | 104.2 |



#34
 1,4-Difluorobenzene
 Concen: 50.000 ug/l
 RT: 6.84 min Scan# 976
 Delta R.T. 0.00 min
 Lab File: VX015919.D
 Acq: 24 Apr 2020 02:50

| Tgt Ion | Resp | Lower | Upper |
|---------|------|-------|-------|
| 114 | 100 | | |
| 63 | 21.5 | 0.0 | 40.6 |
| 88 | 16.3 | 0.0 | 32.8 |

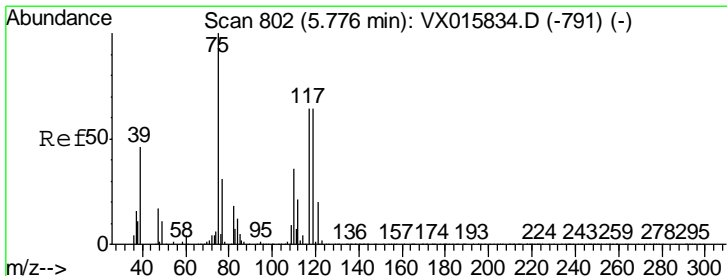
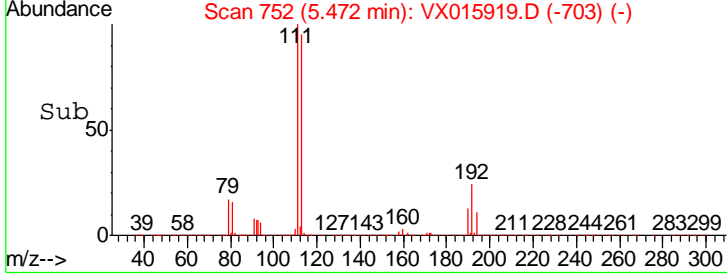
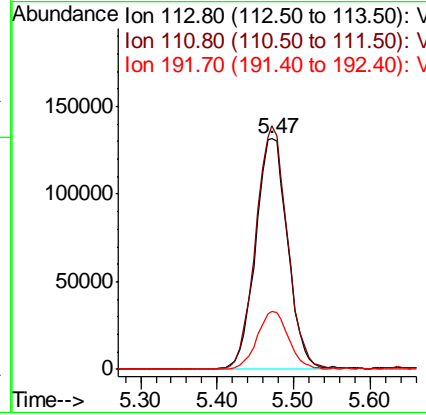
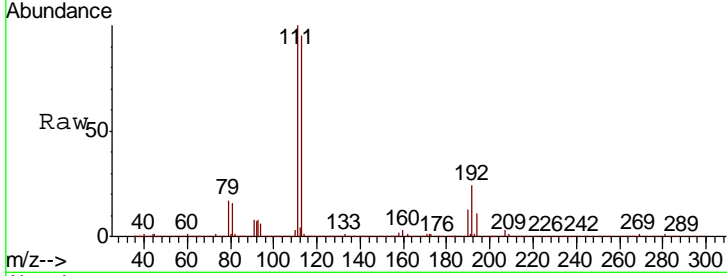




#35
 Dibromofluoromethane
 Concen: 52.298 ug/l
 RT: 5.47 min Scan# 752
 Delta R.T. 0.00 min
 Lab File: VX015919.D
 Acq: 24 Apr 2020 02:50

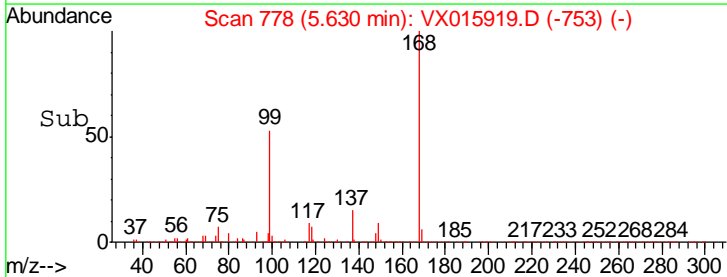
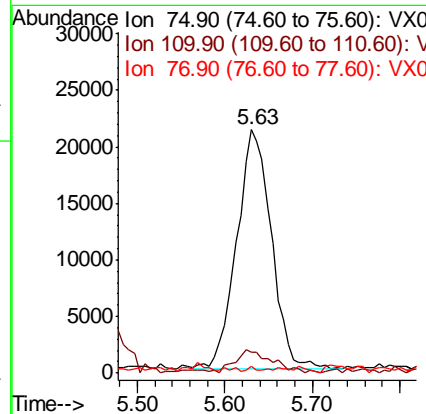
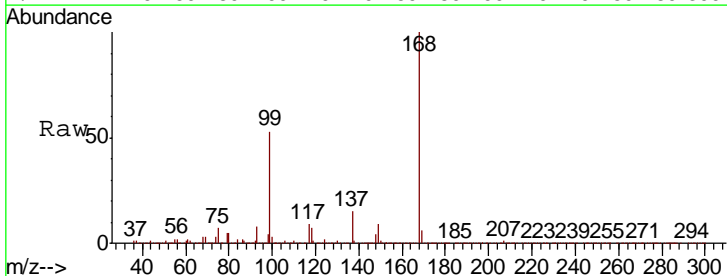
Instrument :
 MSVOA_X
 ClientSampled :
 TP-2-S

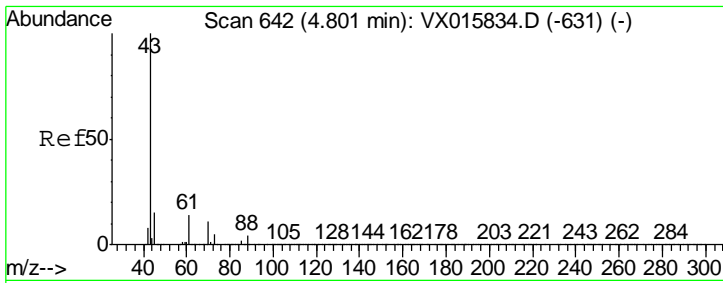
| Tgt Ion | Resp | Lower | Upper |
|---------|--------|-------|-------|
| 113 | 387050 | | |
| 113 | 100 | | |
| 111 | 103.5 | 82.7 | 124.1 |
| 192 | 24.4 | 19.3 | 28.9 |



#36
 1,1-Dichloropropene
 Concen: 5.103 ug/l
 RT: 5.63 min Scan# 778
 Delta R.T. -0.15 min
 Lab File: VX015919.D
 Acq: 24 Apr 2020 02:50

| Tgt Ion | Resp | Lower | Upper |
|---------|-------|-------|-------|
| 75 | 58004 | | |
| 75 | 100 | | |
| 110 | 10.8 | 17.9 | 53.8# |
| 77 | 0.4 | 24.5 | 36.7# |

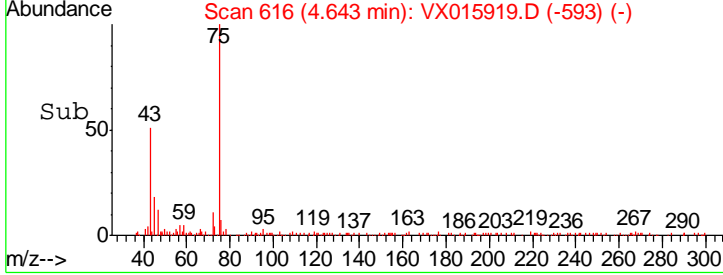
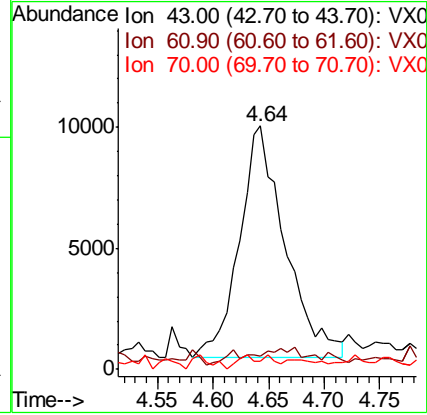
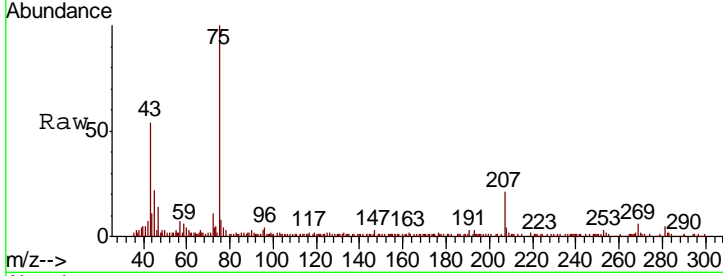




#37
 Ethyl Acetate
 Concen: 2.017 ug/l
 RT: 4.64 min Scan# 616
 Delta R.T. -0.16 min
 Lab File: VX015919.D
 Acq: 24 Apr 2020 02:50

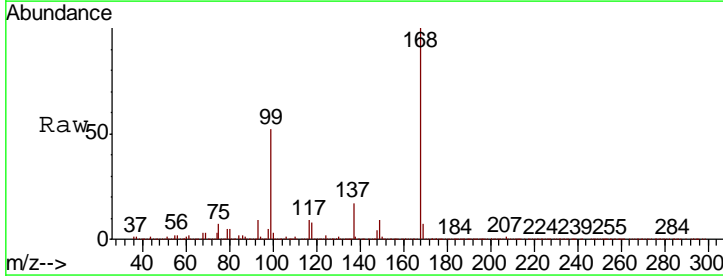
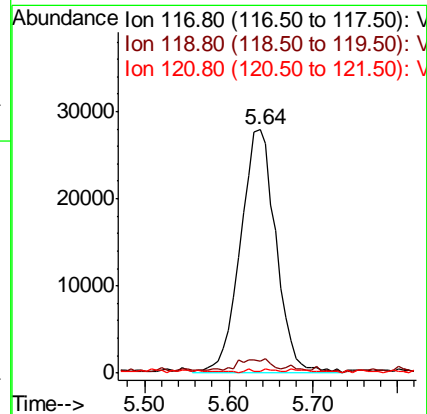
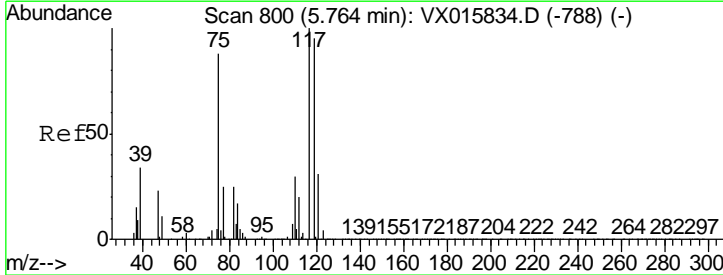
Instrument :
 MSVOA_X
 ClientSampled :
 TP-2-S

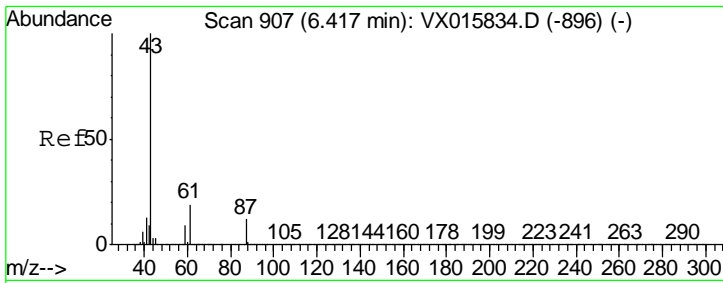
| Tgt Ion | Resp | Lower | Upper |
|---------|------|-------|-------|
| 43 | 100 | | |
| 61 | 0.0 | 10.8 | 16.2# |
| 70 | 2.7 | 8.2 | 12.2# |



#38
 Carbon Tetrachloride
 Concen: 7.120 ug/l
 RT: 5.64 min Scan# 779
 Delta R.T. -0.13 min
 Lab File: VX015919.D
 Acq: 24 Apr 2020 02:50

| Tgt Ion | Resp | Lower | Upper |
|---------|------|-------|--------|
| 117 | 100 | | |
| 119 | 4.5 | 75.7 | 113.5# |
| 121 | 0.4 | 25.0 | 37.6# |

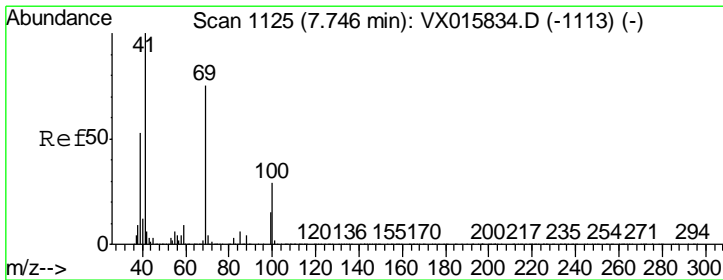
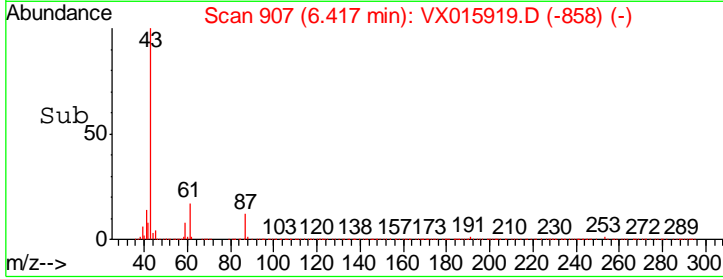
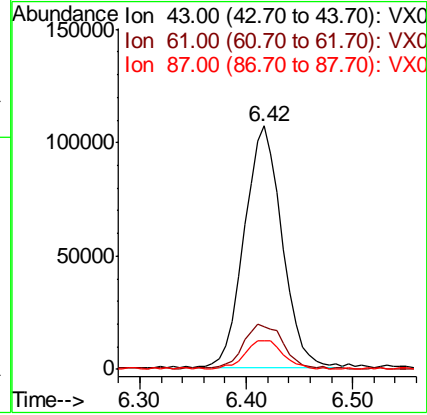
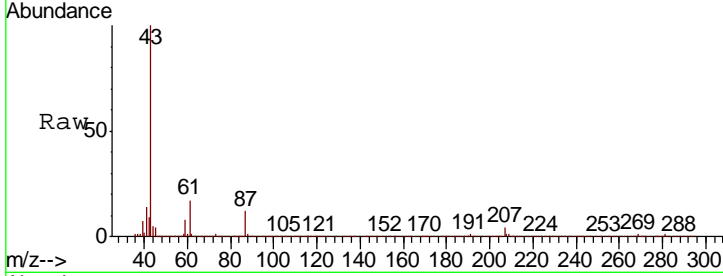




#43
 Isopropyl Acetate
 Concen: 11.591 ug/l
 RT: 6.42 min Scan# 907
 Delta R.T. 0.00 min
 Lab File: VX015919.D
 Acq: 24 Apr 2020 02:50

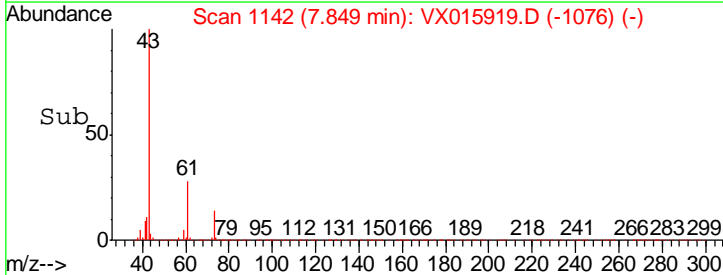
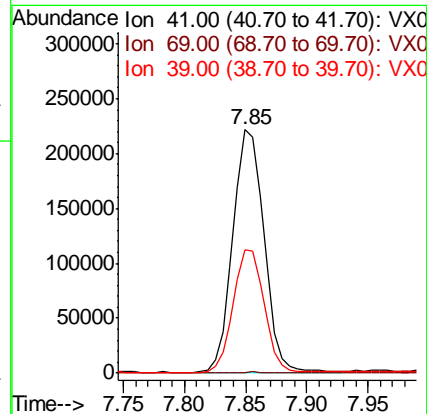
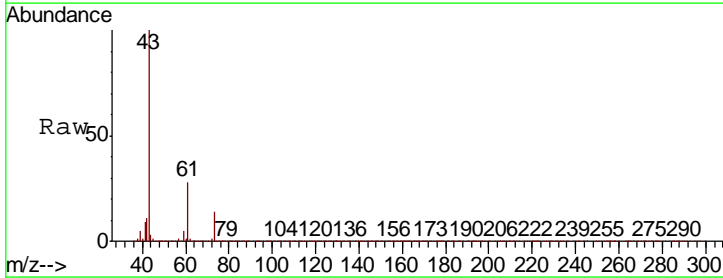
Instrument :
 MSVOA_X
 ClientSampled :
 TP-2-S

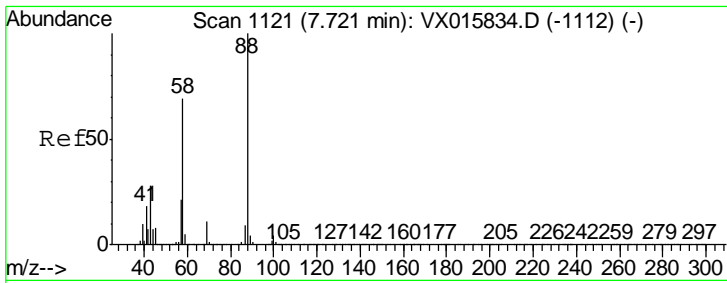
| Tgt Ion | Resp | Lower | Upper |
|---------|------|-------|-------|
| 43 | 100 | | |
| 61 | 19.4 | 15.4 | 23.2 |
| 87 | 12.1 | 9.8 | 14.6 |



#48
 Methyl methacrylate
 Concen: 34.942 ug/l
 RT: 7.85 min Scan# 1142
 Delta R.T. 0.10 min
 Lab File: VX015919.D
 Acq: 24 Apr 2020 02:50

| Tgt Ion | Resp | Lower | Upper |
|---------|------|-------|-------|
| 41 | 100 | | |
| 69 | 0.3 | 60.5 | 90.7# |
| 39 | 50.3 | 42.1 | 63.1 |

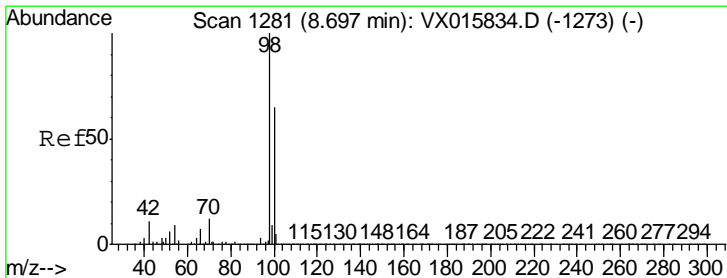
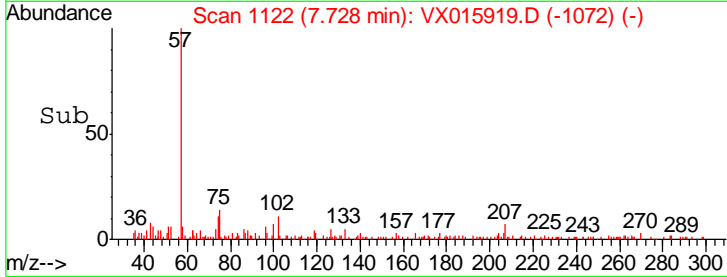
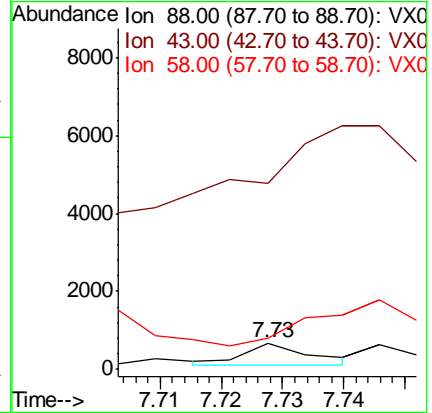
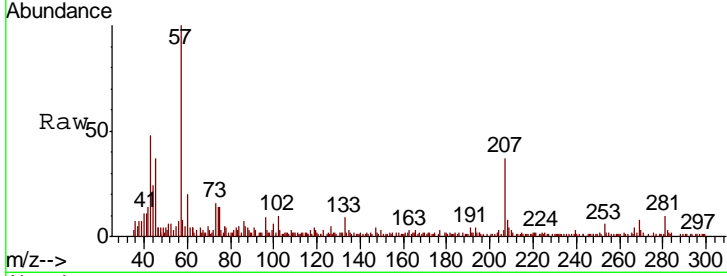




#49
 1,4-Dioxane
 Concen: 2.093 ug/l
 RT: 7.73 min Scan# 1122
 Delta R.T. 0.01 min
 Lab File: VX015919.D
 Acq: 24 Apr 2020 02:50

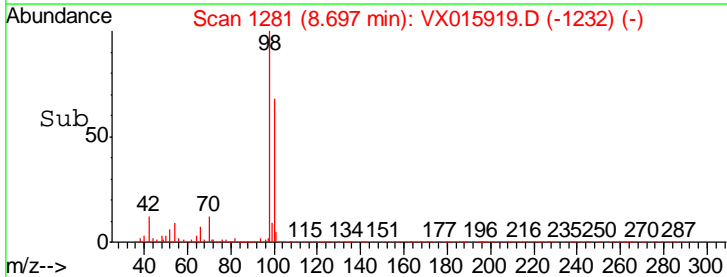
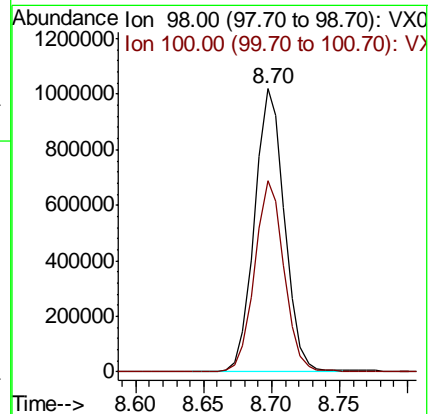
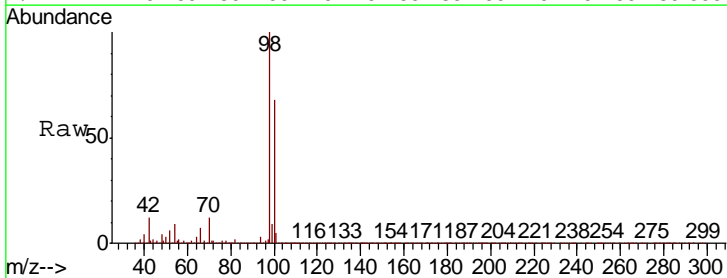
Instrument :
 MSVOA_X
 ClientSampled :
 TP-2-S

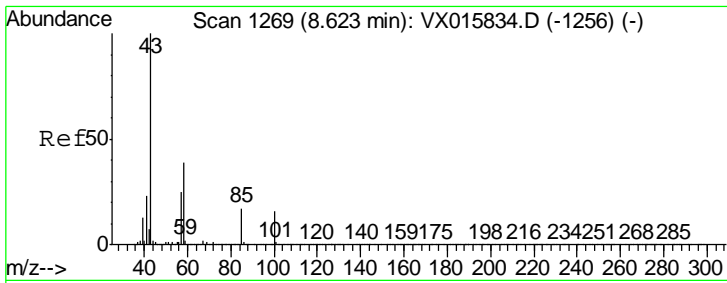
| Tgt Ion | Resp | Lower | Upper |
|---------|------|-------|-------|
| 88 | 444 | | |
| 43 | 0.0 | 28.2 | 42.4# |
| 58 | 0.0 | 58.9 | 88.3# |



#50
 Toluene-d8
 Concen: 53.023 ug/l
 RT: 8.70 min Scan# 1281
 Delta R.T. 0.00 min
 Lab File: VX015919.D
 Acq: 24 Apr 2020 02:50

| Tgt Ion | Resp | Lower | Upper |
|---------|---------|-------|-------|
| 98 | 1579703 | | |
| 100 | 66.2 | 53.8 | 80.6 |

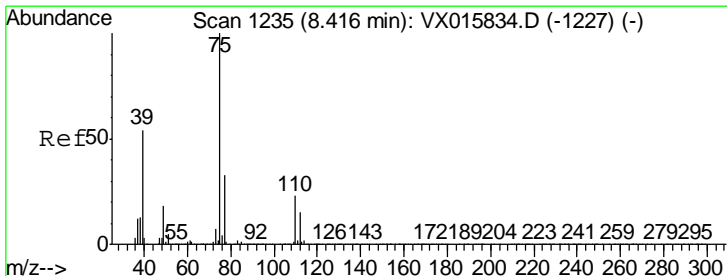
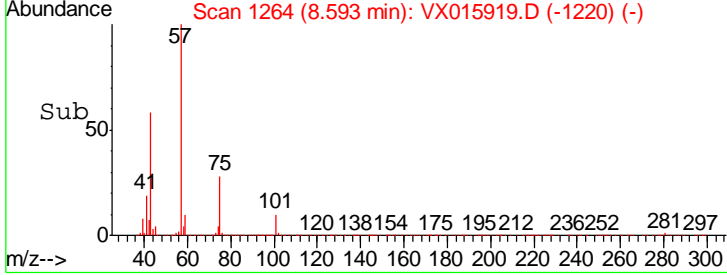
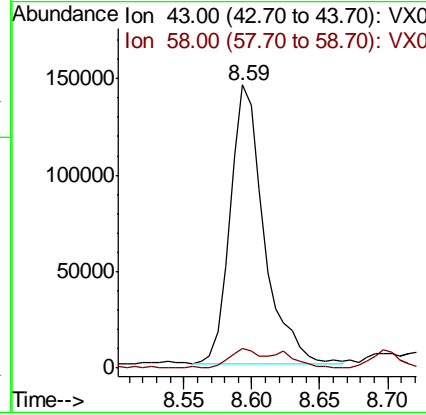
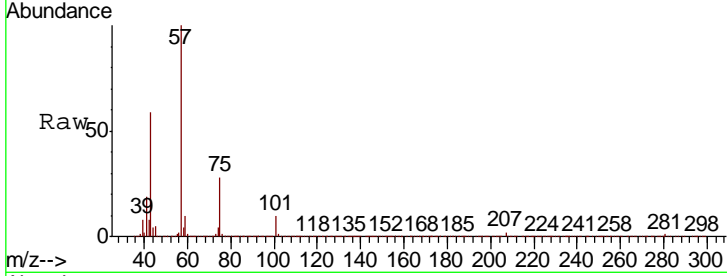




#51
 4-Methyl-2-Pentanone
 Concen: 18.868 ug/l
 RT: 8.59 min Scan# 1264
 Delta R.T. -0.03 min
 Lab File: VX015919.D
 Acq: 24 Apr 2020 02:50

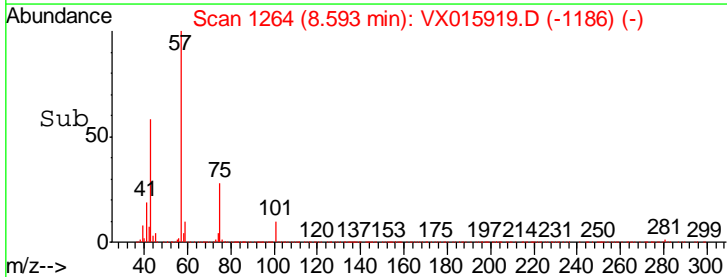
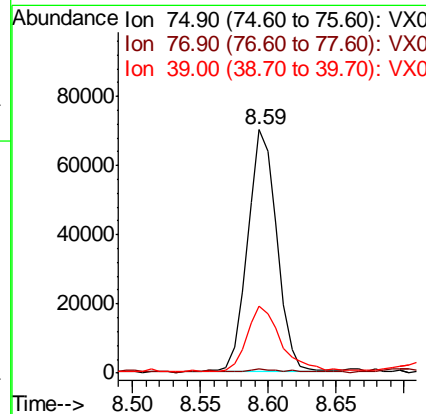
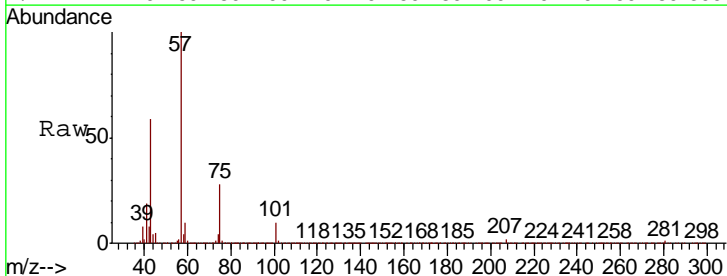
Instrument : MSVOA_X
 ClientSampled : TP-2-S

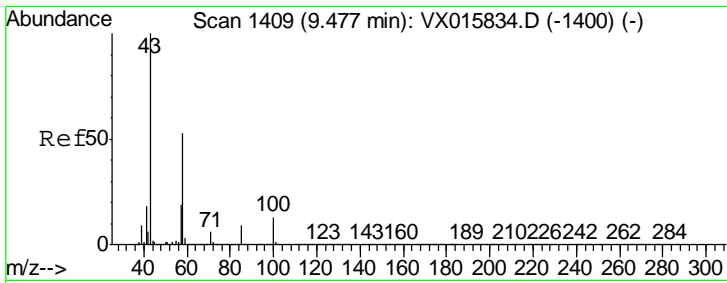
| Tgt Ion | Resp | Lower | Upper |
|---------|------|-------|-------|
| 43 | 100 | | |
| 58 | 6.4 | 30.6 | 45.8# |



#54
 cis-1,3-Dichloropropene
 Concen: 6.924 ug/l
 RT: 8.59 min Scan# 1264
 Delta R.T. 0.18 min
 Lab File: VX015919.D
 Acq: 24 Apr 2020 02:50

| Tgt Ion | Resp | Lower | Upper |
|---------|------|-------|-------|
| 75 | 100 | | |
| 77 | 1.3 | 26.0 | 39.0# |
| 39 | 26.7 | 42.8 | 64.2# |

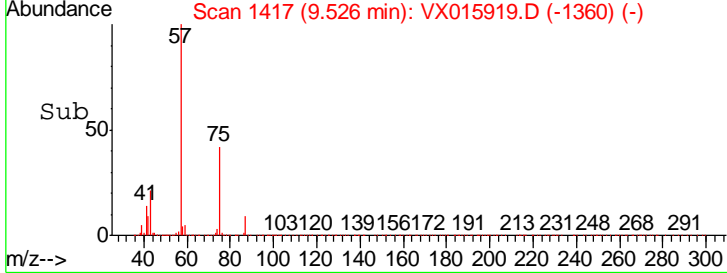
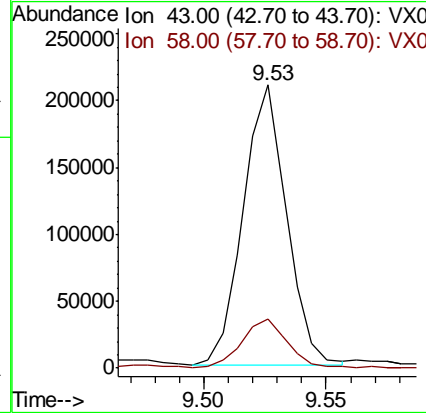
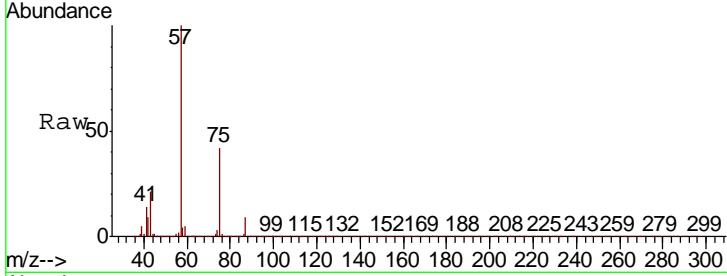




#59
 2-Hexanone
 Concen: 25.777 ug/l
 RT: 9.53 min Scan# 1417
 Delta R.T. 0.05 min
 Lab File: VX015919.D
 Acq: 24 Apr 2020 02:50

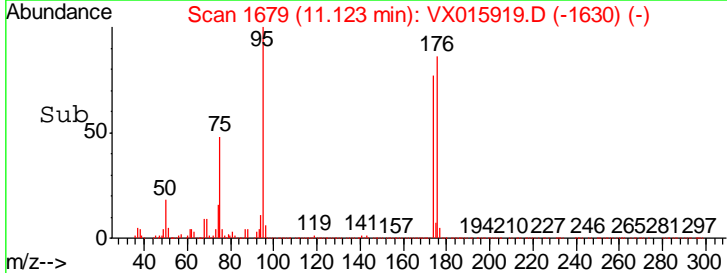
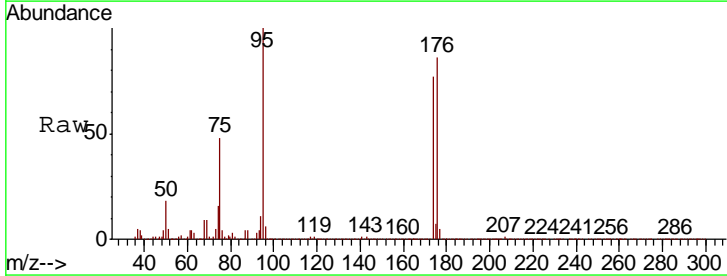
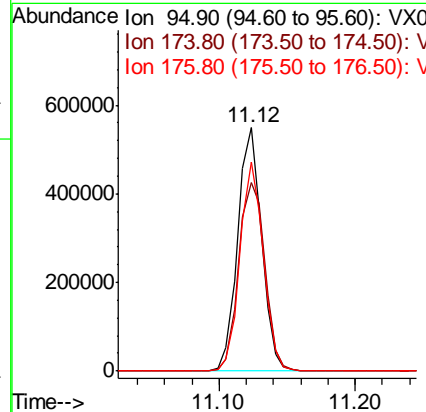
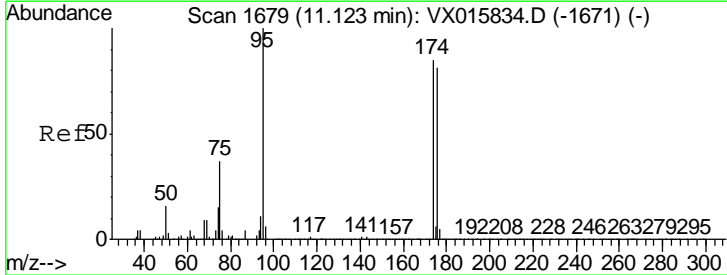
Instrument :
 MSVOA_X
ClientSampled :
 TP-2-S

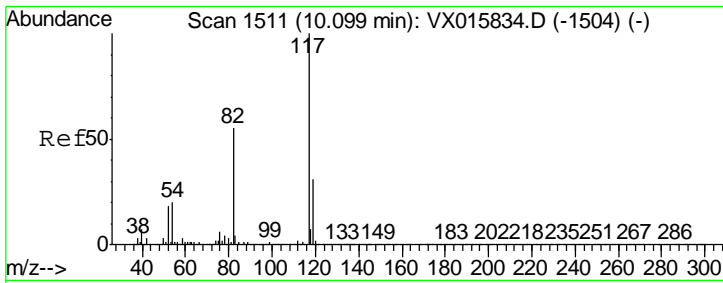
Tgt Ion: 43 Resp: 258640
 Ion Ratio Lower Upper
 43 100
 58 19.1 26.5 79.4#



#62
 4-Bromofluorobenzene
 Concen: 54.937 ug/l
 RT: 11.12 min Scan# 1679
 Delta R.T. 0.00 min
 Lab File: VX015919.D
 Acq: 24 Apr 2020 02:50

Tgt Ion: 95 Resp: 671435
 Ion Ratio Lower Upper
 95 100
 174 85.3 0.0 172.4
 176 84.6 0.0 167.0

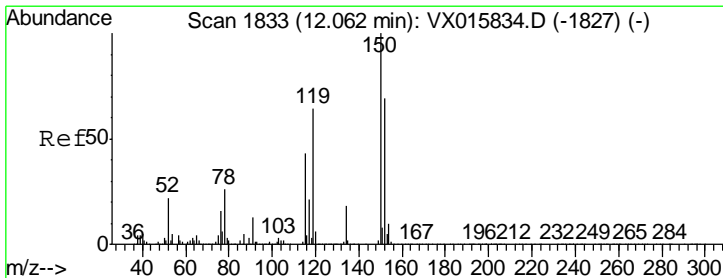
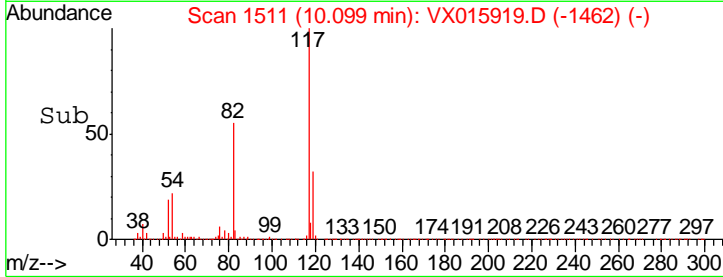
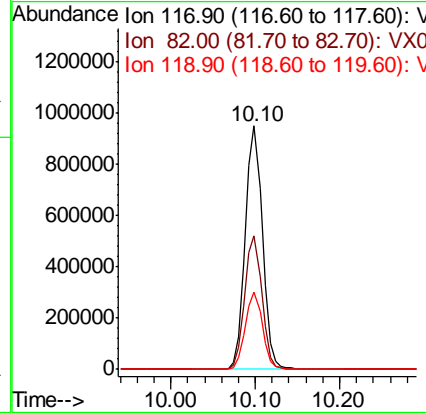
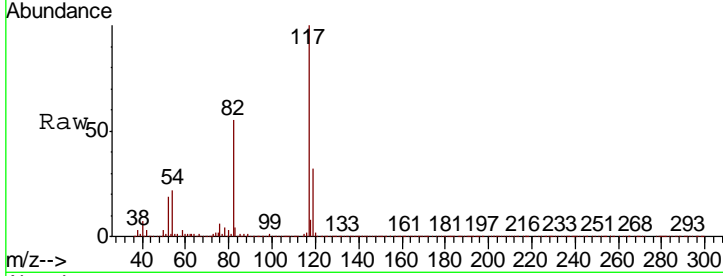




#63
 Chlorobenzene-d5
 Concen: 50.000 ug/l
 RT: 10.10 min Scan# 1511
 Delta R.T. 0.00 min
 Lab File: VX015919.D
 Acq: 24 Apr 2020 02:50

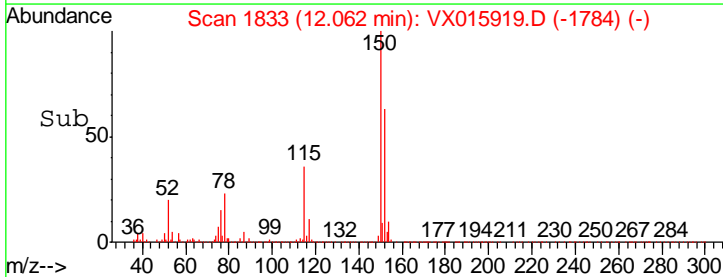
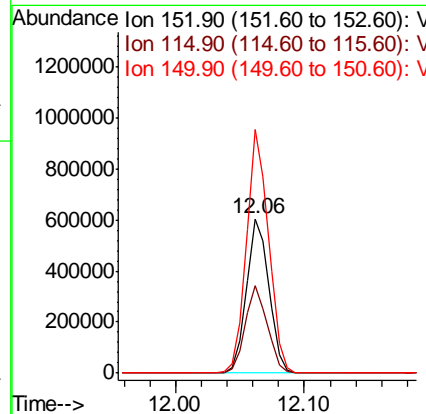
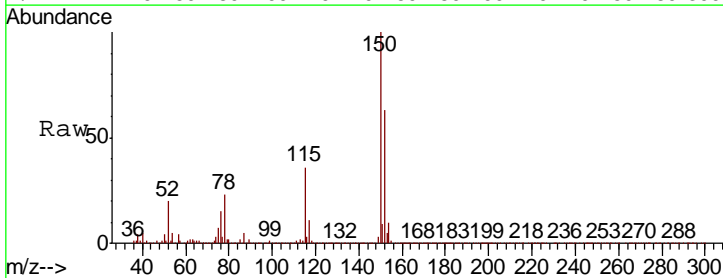
Instrument :
 MSVOA_X
 ClientSampled :
 TP-2-S

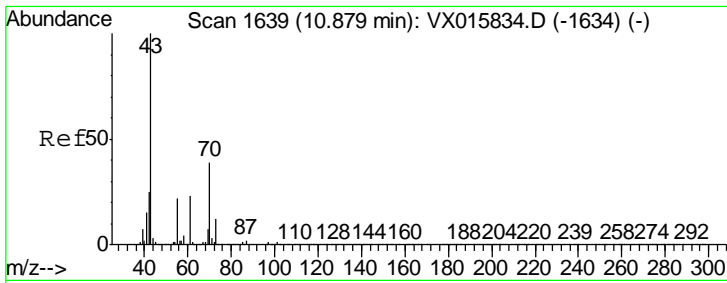
| Tgt Ion | Resp | Lower | Upper |
|---------|---------|-------|-------|
| 117 | 1284651 | | |
| 82 | 55.1 | 43.9 | 65.9 |
| 119 | 31.9 | 25.1 | 37.7 |



#72
 1,4-Dichlorobenzene-d4
 Concen: 50.000 ug/l
 RT: 12.06 min Scan# 1833
 Delta R.T. 0.00 min
 Lab File: VX015919.D
 Acq: 24 Apr 2020 02:50

| Tgt Ion | Resp | Lower | Upper |
|---------|--------|-------|-------|
| 152 | 726362 | | |
| 115 | 55.8 | 39.0 | 116.9 |
| 150 | 154.6 | 0.0 | 336.8 |

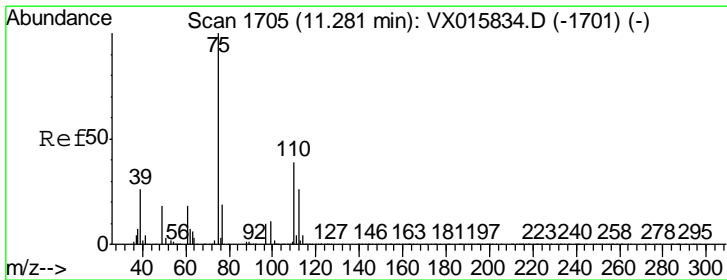
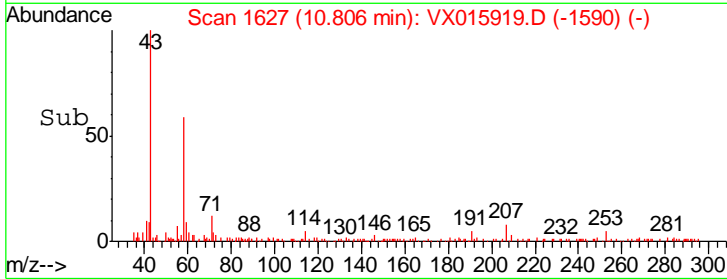
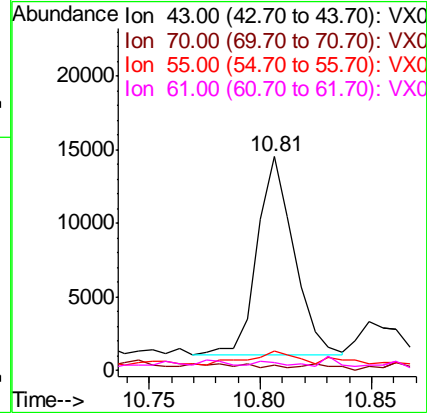
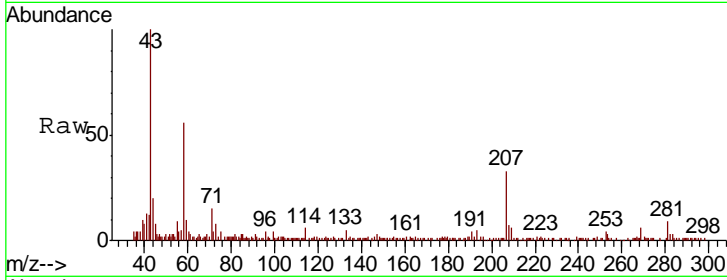




#74
 N-amyl acetate
 Concen: 0.660 ug/l
 RT: 10.81 min Scan# 1627
 Delta R.T. -0.07 min
 Lab File: VX015919.D
 Acq: 24 Apr 2020 02:50

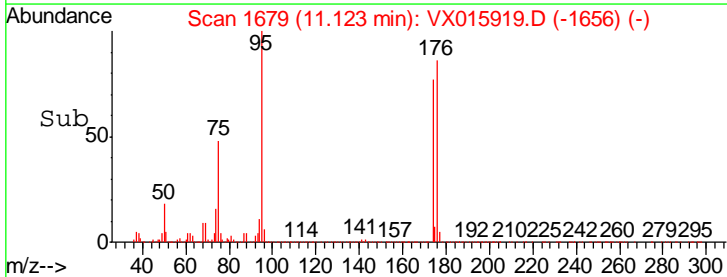
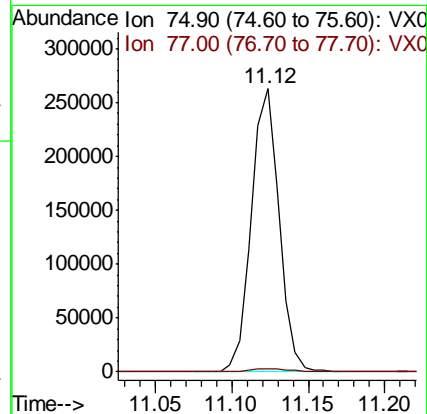
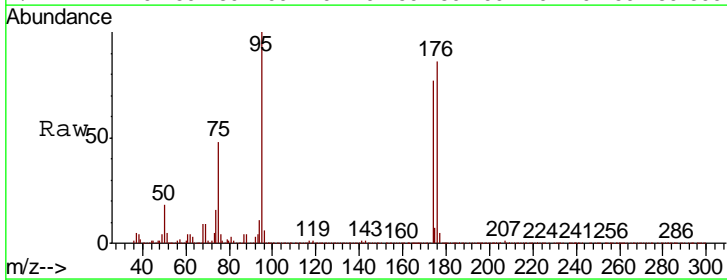
Instrument :
 MSVOA_X
 ClientSampled :
 TP-2-S

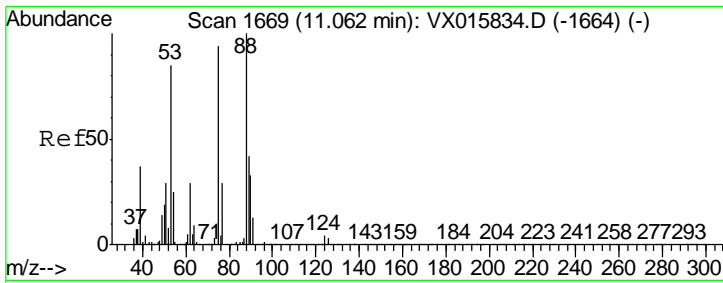
| Tgt Ion | Resp | Lower | Upper |
|---------|-------|-------|-------|
| 43 | 15725 | | |
| 70 | 2.9 | 32.6 | 49.0# |
| 55 | 10.1 | 18.3 | 27.5# |
| 61 | 0.0 | 18.7 | 28.1# |



#76
 1,2,3-Trichloropropane
 Concen: 23.882 ug/l
 RT: 11.12 min Scan# 1679
 Delta R.T. -0.16 min
 Lab File: VX015919.D
 Acq: 24 Apr 2020 02:50

| Tgt Ion | Resp | Lower | Upper |
|---------|--------|-------|-------|
| 75 | 329868 | | |
| 77 | 1.6 | 21.3 | 63.9# |





#81
 trans-1,4-Dichloro-2-butene
 Concen: 57.449 ug/l
 RT: 11.12 min Scan# 1679
 Delta R.T. 0.06 min
 Lab File: VX015919.D
 Acq: 24 Apr 2020 02:50

Instrument :
 MSVOA_X
 ClientSampleId :
 TP-2-S

| Tot Ion | Resp | Lower | Upper |
|---------|------|-------|--------|
| 75 | 100 | | |
| 53 | 0.1 | 74.2 | 111.2# |
| 89 | 0.2 | 38.0 | 57.0# |

