

Data Path : Z:\voasrv\HPCHEM1\MSVOA_X\Data\VX042525\
 Data File : VX045939.D
 Acq On : 25 Apr 2025 13:23
 Operator : JC/MD
 Sample : Q1888-02
 Misc : 5.0mL/MSVOA_X/WATER
 ALS Vial : 9 Sample Multiplier: 1

Instrument :
 MSVOA_X
 ClientSampleId :
 STORAGE-BLANK-WATER-REF-5

Quant Time: Apr 25 23:01:28 2025
 Quant Method : Z:\voasrv\HPCHEM1\MSVOA_X\Method\82X040225W.M
 Quant Title : SW846 8260
 QLast Update : Wed Apr 02 03:11:43 2025
 Response via : Initial Calibration

Compound	R.T.	QIon	Response	Conc	Units	Dev(Min)

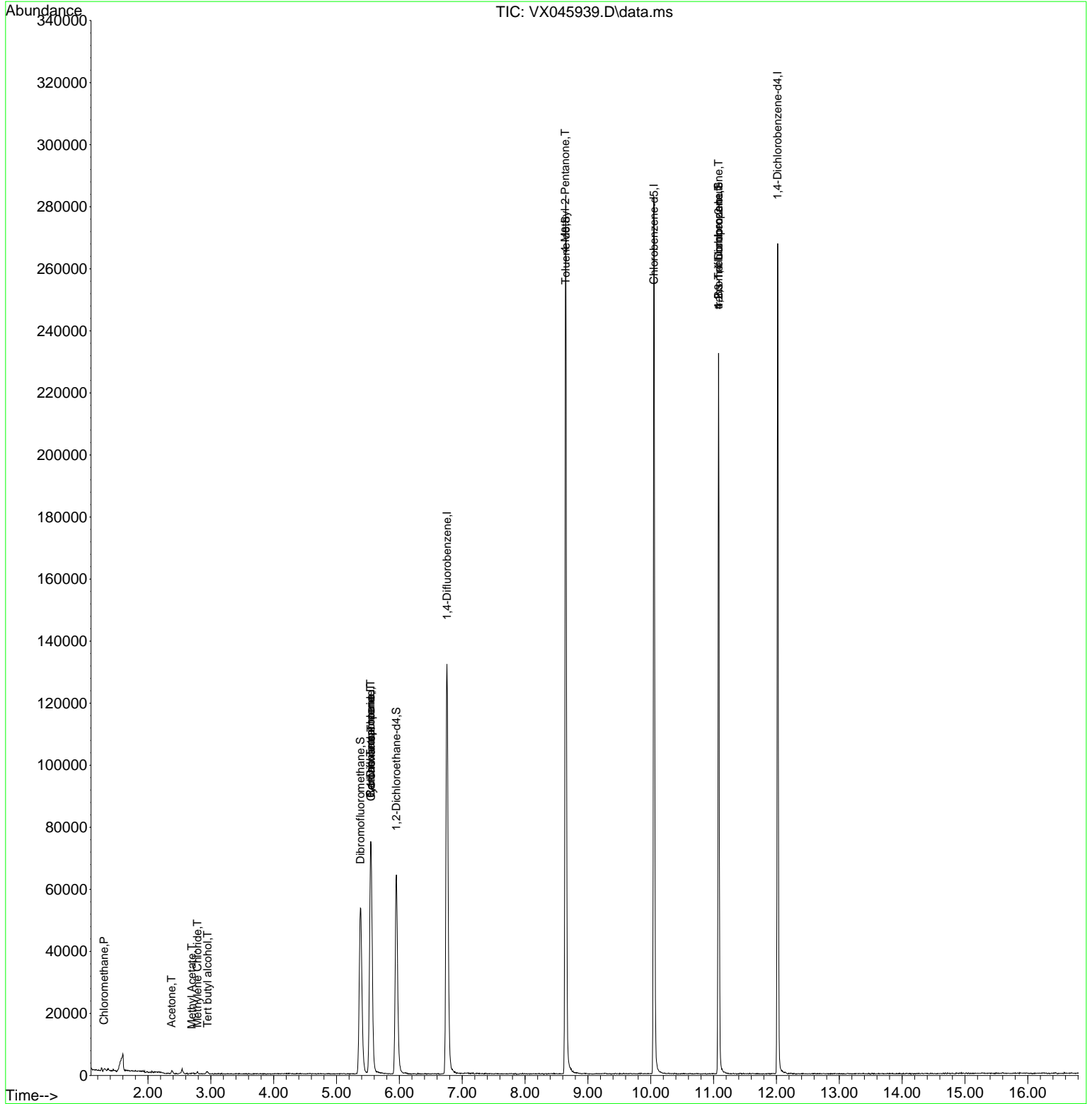
Internal Standards						
1) Pentafluorobenzene	5.544	168	63790	50.000	ug/l	0.00
34) 1,4-Difluorobenzene	6.757	114	128300	50.000	ug/l	0.00
63) Chlorobenzene-d5	10.049	117	117188	50.000	ug/l	0.00
72) 1,4-Dichlorobenzene-d4	12.018	152	48670	50.000	ug/l	0.00
System Monitoring Compounds						
33) 1,2-Dichloroethane-d4	5.952	65	65692	56.313	ug/l	0.00
Spiked Amount	50.000	Range 74 - 125	Recovery	=	112.620%	
35) Dibromofluoromethane	5.379	113	47279	51.938	ug/l	0.00
Spiked Amount	50.000	Range 75 - 124	Recovery	=	103.880%	
50) Toluene-d8	8.647	98	160402	50.484	ug/l	0.00
Spiked Amount	50.000	Range 86 - 113	Recovery	=	100.960%	
62) 4-Bromofluorobenzene	11.079	95	59403	51.328	ug/l	0.00
Spiked Amount	50.000	Range 77 - 121	Recovery	=	102.660%	
Target Compounds						
						Qvalue
3) Chloromethane	1.301	50	1043	1.064	ug/l	92
11) Tert butyl alcohol	2.947	59	283	1.805	ug/l #	72
16) Acetone	2.374	43	1100	2.296	ug/l	91
18) Methyl Acetate	2.697	43	258	0.234	ug/l #	54
20) Methylene Chloride	2.788	84	246	0.274	ug/l #	67
31) Cyclohexane	5.550	56	2011	1.405	ug/l #	63
36) 1,1-Dichloropropene	5.544	75	6619	5.385	ug/l #	47
38) Carbon Tetrachloride	5.544	117	7829	5.894	ug/l #	17
51) 4-Methyl-2-Pentanone	8.641	43	848	0.545	ug/l #	1
76) 1,2,3-Trichloropropane	11.079	75	34347	28.932	ug/l #	37
81) trans-1,4-Dichloro-2-b...	11.079	75	34347	98.191	ug/l #	1

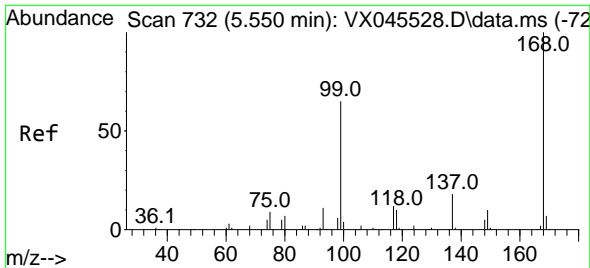
(#) = qualifier out of range (m) = manual integration (+) = signals summed

Data Path : Z:\voasrv\HPCHEM1\MSVOA_X\Data\VX042525\
 Data File : VX045939.D
 Acq On : 25 Apr 2025 13:23
 Operator : JC/MD
 Sample : Q1888-02
 Misc : 5.0mL/MSVOA_X/WATER
 ALS Vial : 9 Sample Multiplier: 1

Instrument :
 MSVOA_X
ClientSampleId :
 STORAGE-BLANK-WATER-REF-5

Quant Time: Apr 25 23:01:28 2025
 Quant Method : Z:\voasrv\HPCHEM1\MSVOA_X\Method\82X040225W.M
 Quant Title : SW846 8260
 QLast Update : Wed Apr 02 03:11:43 2025
 Response via : Initial Calibration

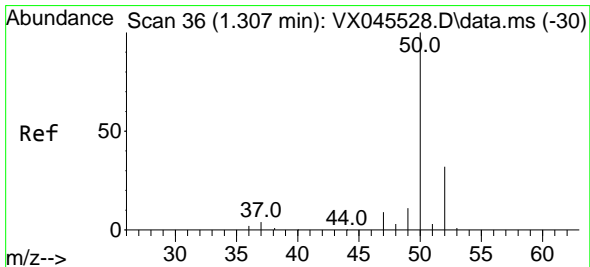
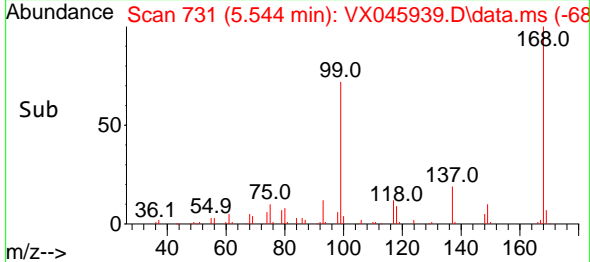
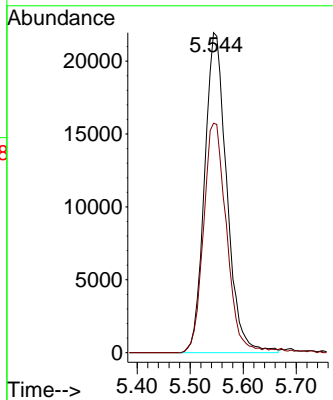
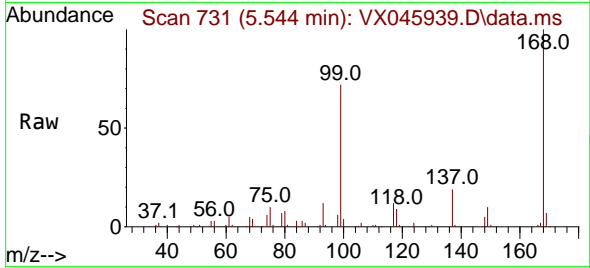




#1
 Pentafluorobenzene
 Concen: 50.000 ug/l
 RT: 5.544 min Scan# 71
 Delta R.T. -0.006 min
 Lab File: VX045939.D
 Acq: 25 Apr 2025 13:23

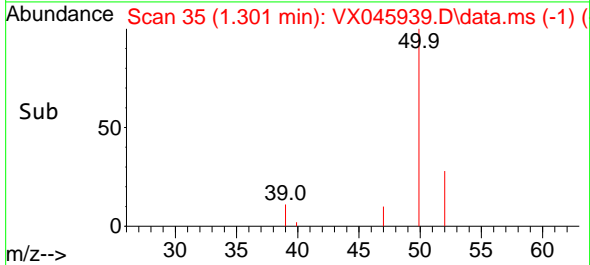
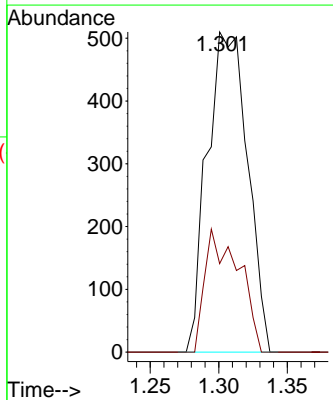
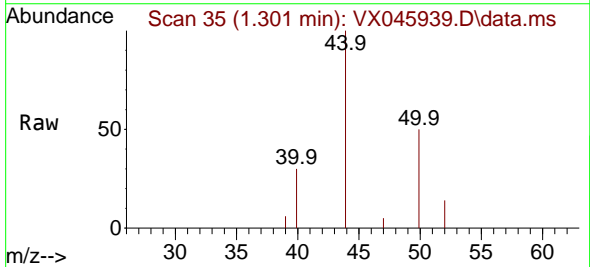
Instrument : MSVOA_X
 ClientSampleId : STORAGE-BLANK-WATER-REF-5

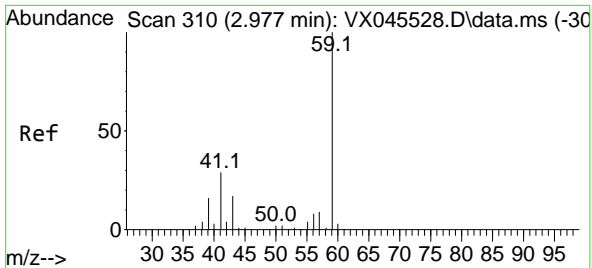
Tgt Ion:168 Resp: 63790
 Ion Ratio Lower Upper
 168 100
 99 71.7 52.3 78.5



#3
 Chloromethane
 Concen: 1.064 ug/l
 RT: 1.301 min Scan# 35
 Delta R.T. -0.006 min
 Lab File: VX045939.D
 Acq: 25 Apr 2025 13:23

Tgt Ion: 50 Resp: 1043
 Ion Ratio Lower Upper
 50 100
 52 27.6 25.9 38.9

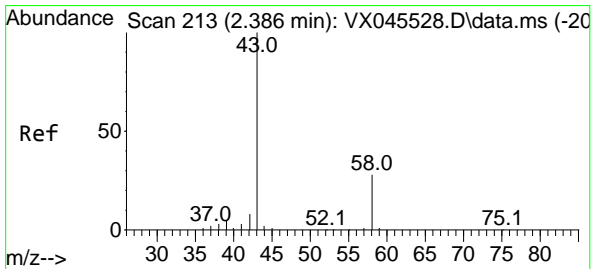
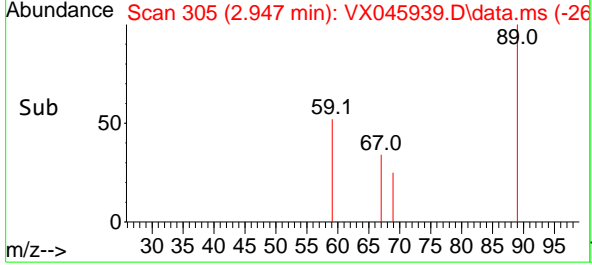
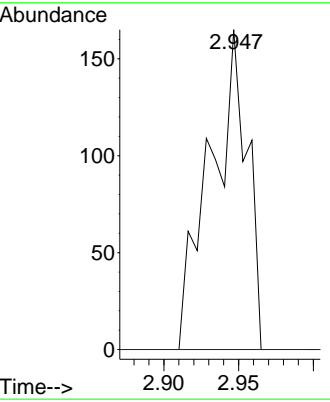
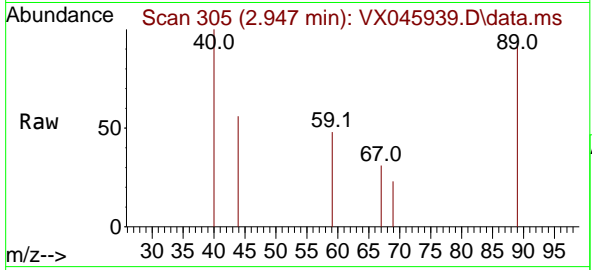




#11
 Tert butyl alcohol
 Concen: 1.805 ug/l
 RT: 2.947 min Scan# 30
 Delta R.T. -0.030 min
 Lab File: VX045939.D
 Acq: 25 Apr 2025 13:23

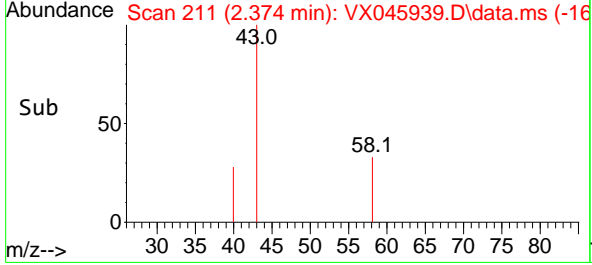
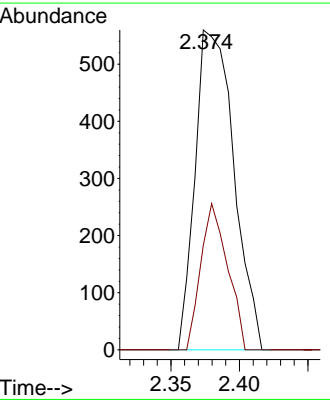
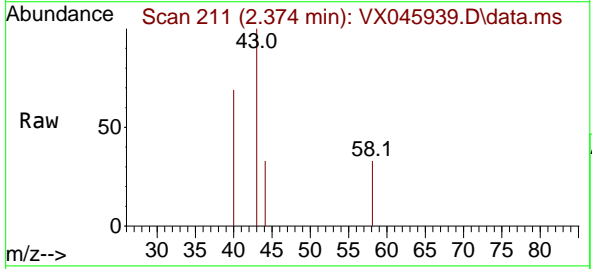
Instrument : MSVOA_X
 ClientSampleId : STORAGE-BLANK-WATER-REF-5

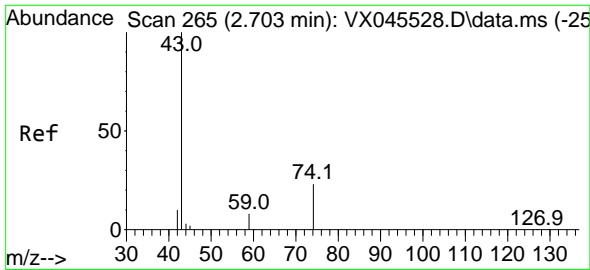
Tgt Ion: 59 Resp: 283
 Ion Ratio Lower Upper
 59 100
 57 0.0 8.6 12.8#



#16
 Acetone
 Concen: 2.296 ug/l
 RT: 2.374 min Scan# 211
 Delta R.T. -0.012 min
 Lab File: VX045939.D
 Acq: 25 Apr 2025 13:23

Tgt Ion: 43 Resp: 1100
 Ion Ratio Lower Upper
 43 100
 58 32.7 22.3 33.5

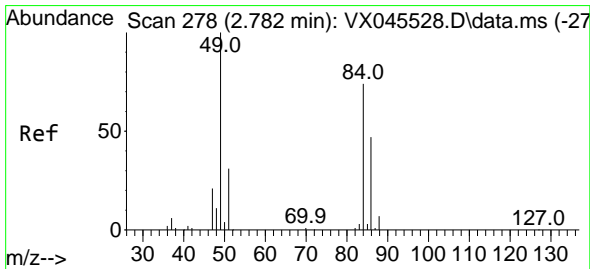
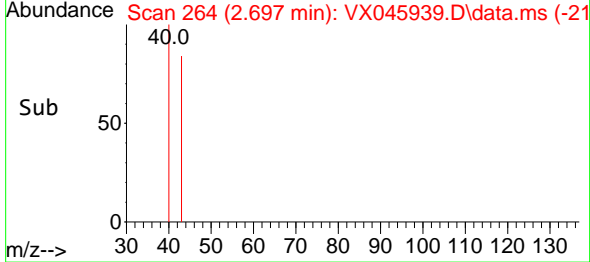
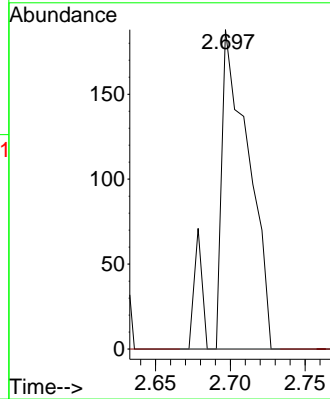
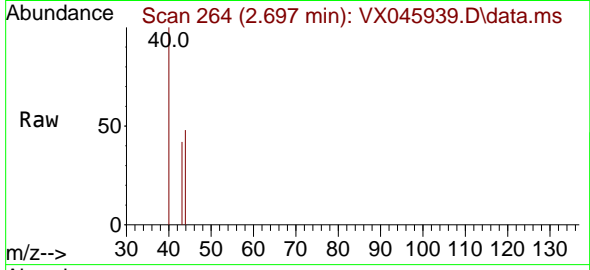




#18
 Methyl Acetate
 Concen: 0.234 ug/l
 RT: 2.697 min Scan# 210
 Delta R.T. -0.006 min
 Lab File: VX045939.D
 Acq: 25 Apr 2025 13:23

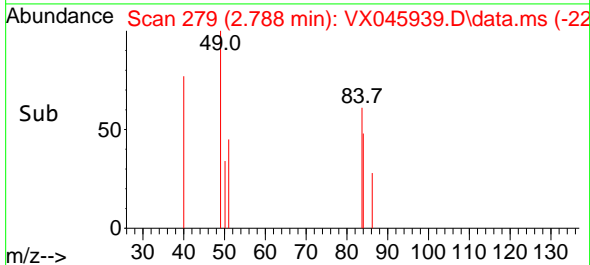
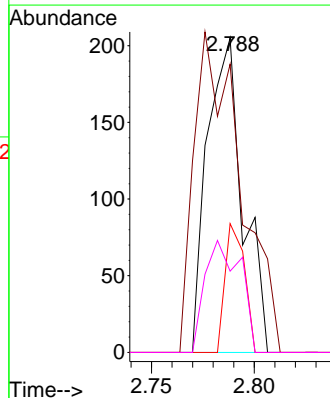
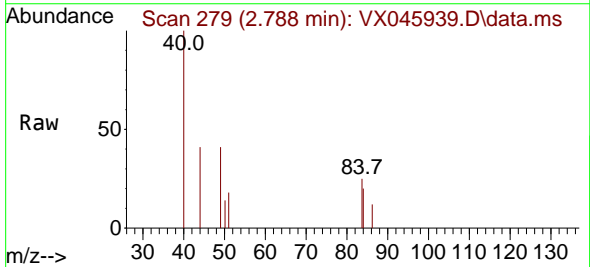
Instrument : MSVOA_X
 ClientSampleId : STORAGE-BLANK-WATER-REF-5

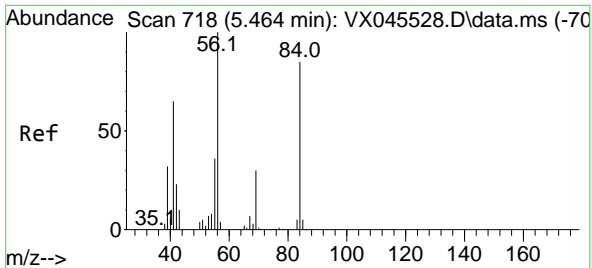
Tgt Ion	Resp	Lower	Upper
43	100		
74	0.0	17.5	26.3#



#20
 Methylene Chloride
 Concen: 0.274 ug/l
 RT: 2.788 min Scan# 279
 Delta R.T. 0.006 min
 Lab File: VX045939.D
 Acq: 25 Apr 2025 13:23

Tgt Ion	Resp	Lower	Upper
84	100		
49	91.7	107.5	161.3#
51	41.0	33.0	49.6
86	25.9	50.1	75.1#



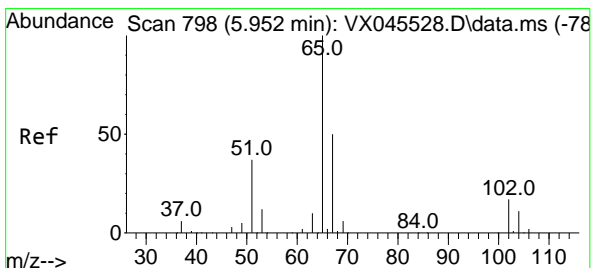
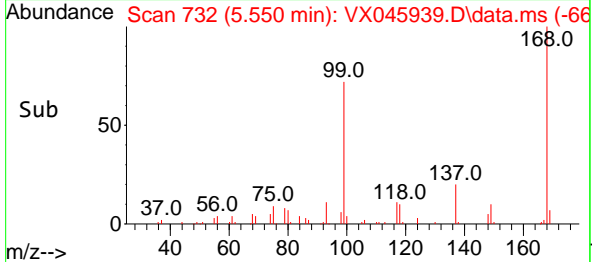
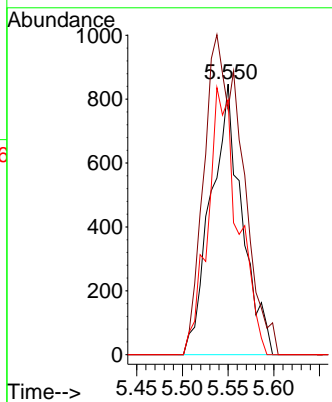
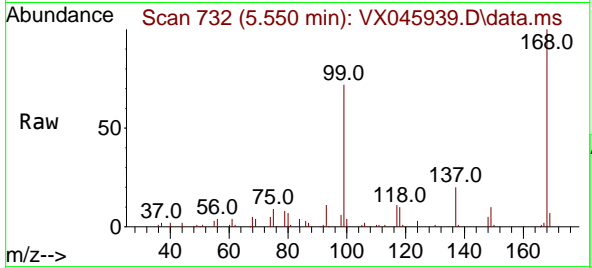


#31
 Cyclohexane
 Concen: 1.405 ug/l
 RT: 5.550 min Scan# 718
 Delta R.T. 0.085 min
 Lab File: VX045939.D
 Acq: 25 Apr 2025 13:23

Instrument : MSVOA_X
 ClientSampleId : STORAGE-BLANK-WATER-REF-5

Tgt Ion: 56 Resp: 2011

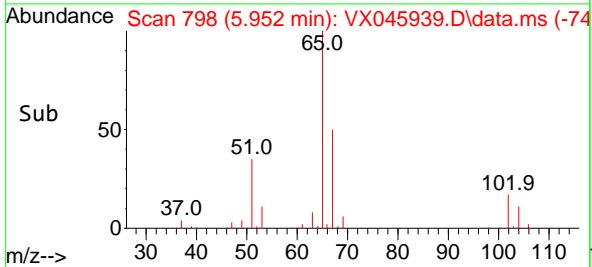
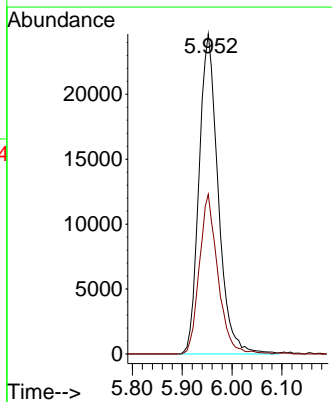
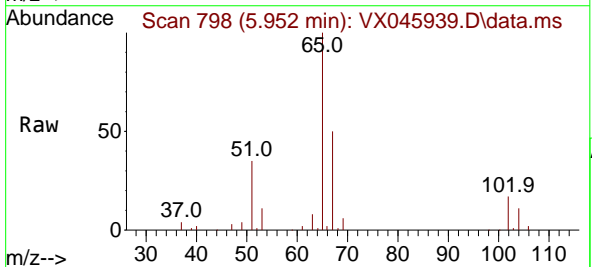
Ion	Ratio	Lower	Upper
56	100		
69	90.7	23.6	35.4#
84	94.2	67.7	101.5

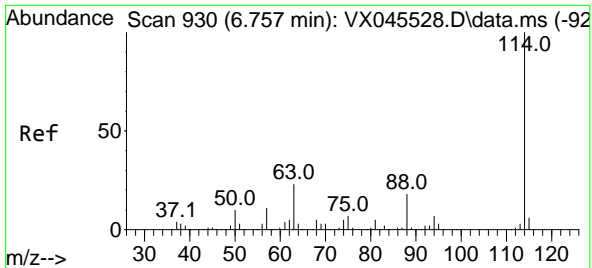


#33
 1,2-Dichloroethane-d4
 Concen: 56.313 ug/l
 RT: 5.952 min Scan# 798
 Delta R.T. 0.000 min
 Lab File: VX045939.D
 Acq: 25 Apr 2025 13:23

Tgt Ion: 65 Resp: 65692

Ion	Ratio	Lower	Upper
65	100		
67	47.9	0.0	99.0



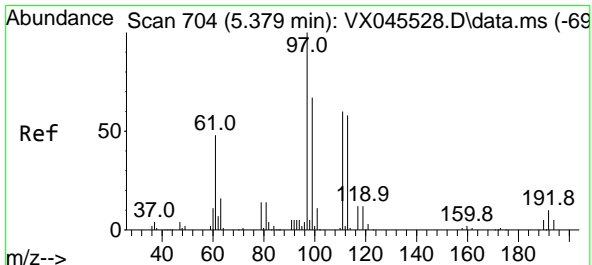
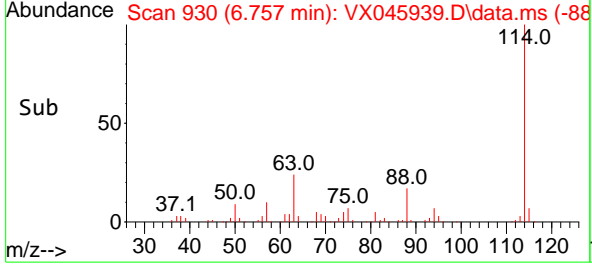
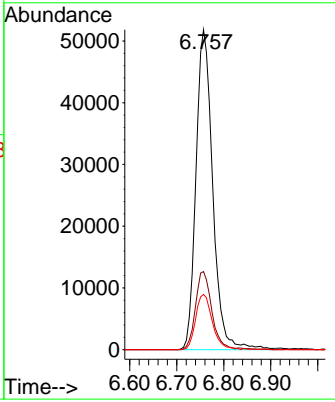
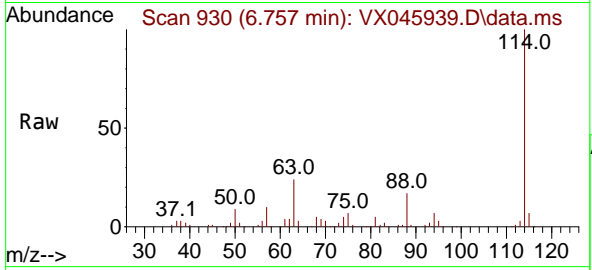


#34
 1,4-Difluorobenzene
 Concen: 50.000 ug/l
 RT: 6.757 min Scan# 911
 Delta R.T. 0.000 min
 Lab File: VX045939.D
 Acq: 25 Apr 2025 13:23

Instrument : MSVOA_X
 ClientSampleId : STORAGE-BLANK-WATER-REF-5

Tgt Ion:114 Resp: 128300

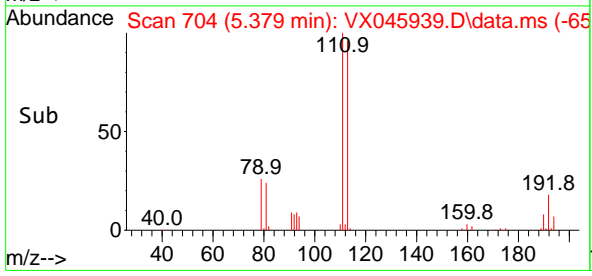
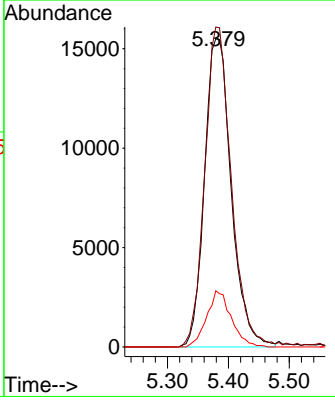
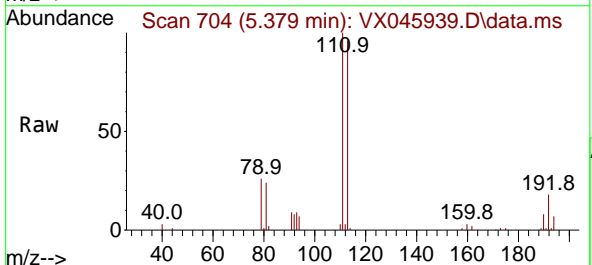
Ion	Ratio	Lower	Upper
114	100		
63	24.4	0.0	46.8
88	17.3	0.0	35.4

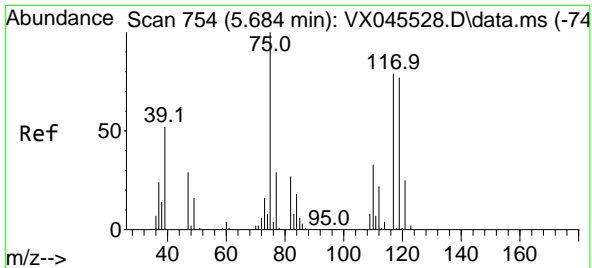


#35
 Dibromofluoromethane
 Concen: 51.938 ug/l
 RT: 5.379 min Scan# 704
 Delta R.T. 0.000 min
 Lab File: VX045939.D
 Acq: 25 Apr 2025 13:23

Tgt Ion:113 Resp: 47279

Ion	Ratio	Lower	Upper
113	100		
111	103.4	81.8	122.6
192	16.7	13.8	20.6

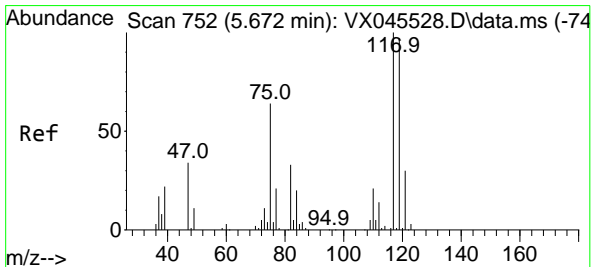
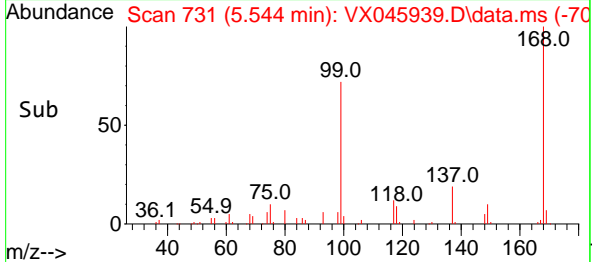
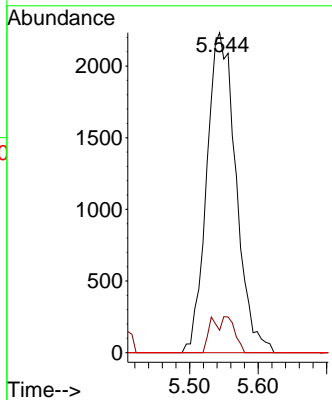
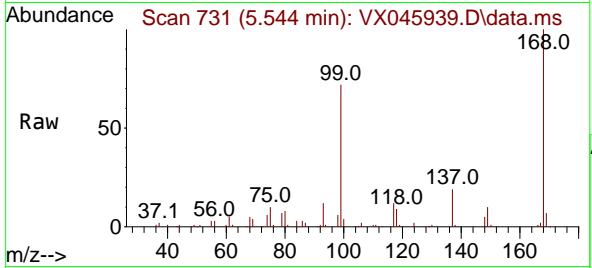




#36
 1,1-Dichloropropene
 Concen: 5.385 ug/l
 RT: 5.544 min Scan# 711
 Delta R.T. -0.140 min
 Lab File: VX045939.D
 Acq: 25 Apr 2025 13:23

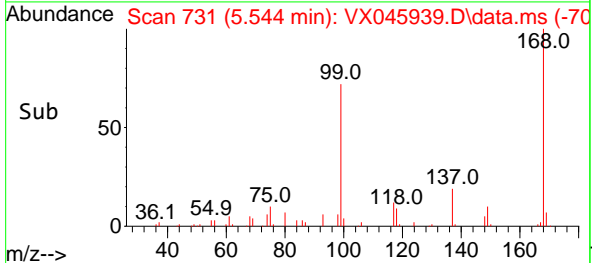
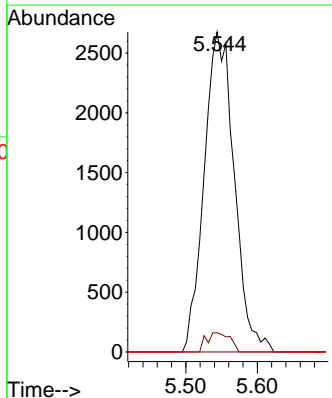
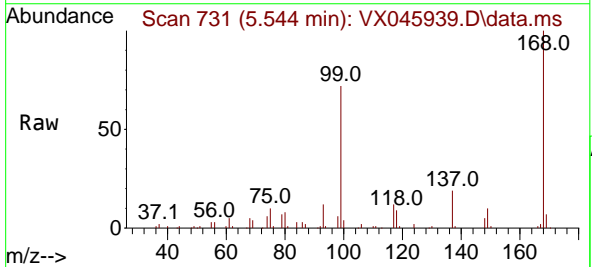
Instrument : MSVOA_X
 ClientSampleId : STORAGE-BLANK-WATER-REF-5

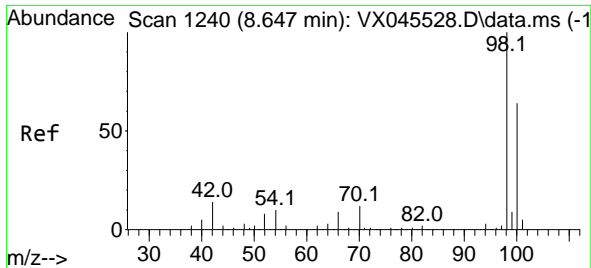
Tgt Ion	Resp	Lower	Upper
75	6619		
75	100		
110	4.9	16.9	50.6#
77	0.0	25.0	37.4#



#38
 Carbon Tetrachloride
 Concen: 5.894 ug/l
 RT: 5.544 min Scan# 731
 Delta R.T. -0.128 min
 Lab File: VX045939.D
 Acq: 25 Apr 2025 13:23

Tgt Ion	Resp	Lower	Upper
117	7829		
117	100		
119	6.0	76.9	115.3#
121	0.0	24.2	36.2#

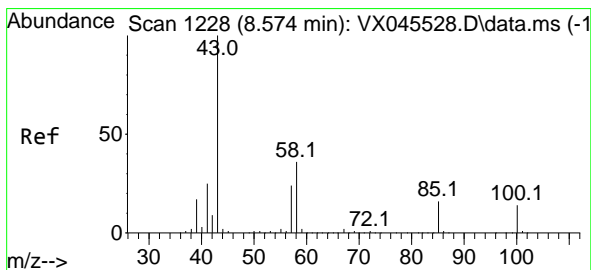
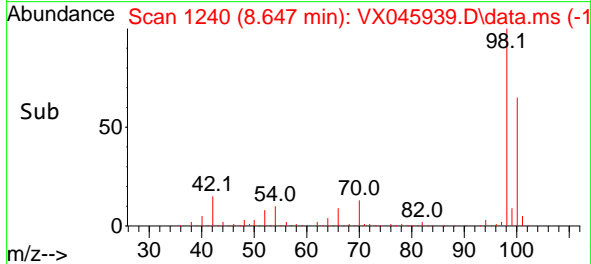
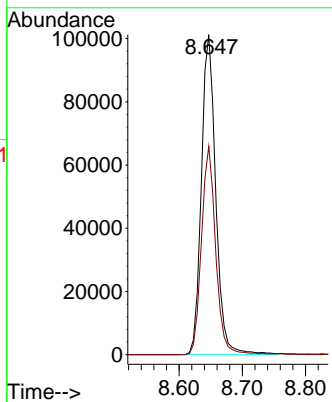
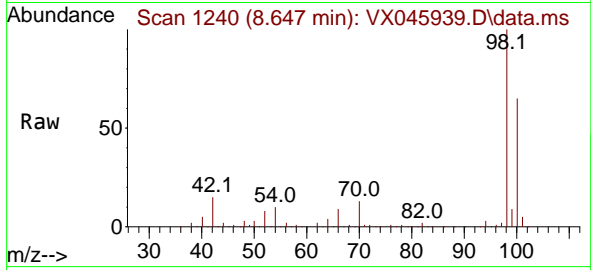




#50
 Toluene-d8
 Concen: 50.484 ug/l
 RT: 8.647 min Scan# 11
 Delta R.T. 0.000 min
 Lab File: VX045939.D
 Acq: 25 Apr 2025 13:23

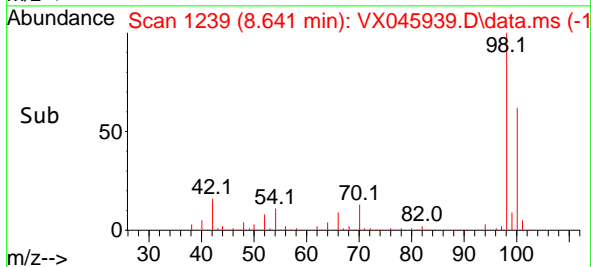
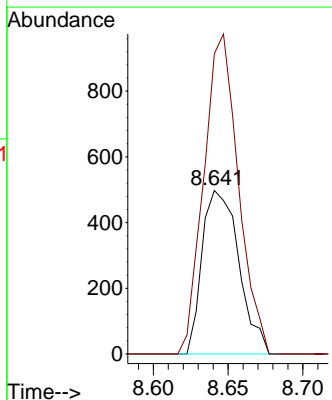
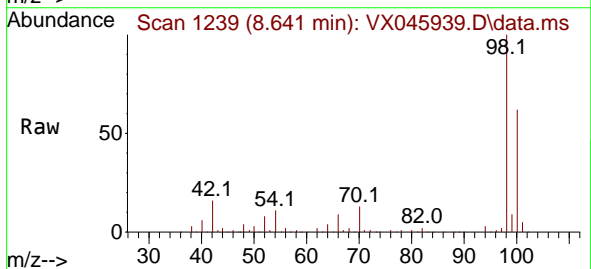
Instrument : MSVOA_X
 ClientSampleId : STORAGE-BLANK-WATER-REF-5

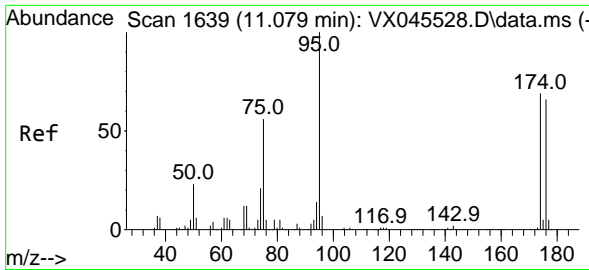
Tgt Ion: 98 Resp: 160402
 Ion Ratio Lower Upper
 98 100
 100 64.6 52.2 78.4



#51
 4-Methyl-2-Pentanone
 Concen: 0.545 ug/l
 RT: 8.641 min Scan# 1239
 Delta R.T. 0.067 min
 Lab File: VX045939.D
 Acq: 25 Apr 2025 13:23

Tgt Ion: 43 Resp: 848
 Ion Ratio Lower Upper
 43 100
 58 184.9 28.5 42.7#



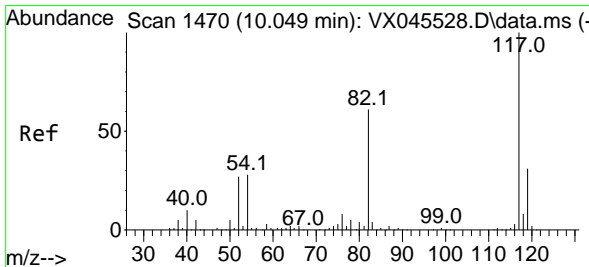
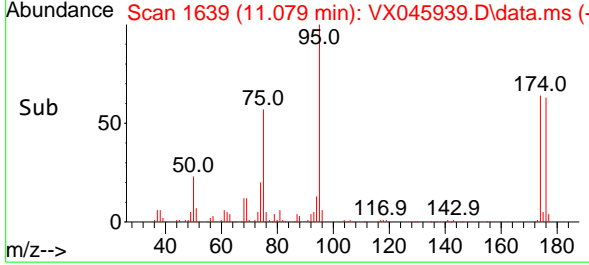
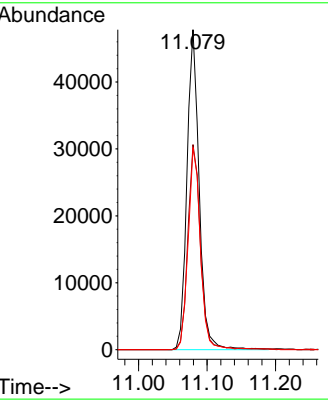
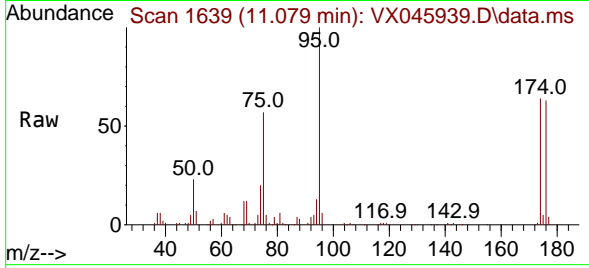


#62
 4-Bromofluorobenzene
 Concen: 51.328 ug/l
 RT: 11.079 min Scan# 1639
 Delta R.T. 0.000 min
 Lab File: VX045939.D
 Acq: 25 Apr 2025 13:23

Instrument : MSVOA_X
 ClientSampleId : STORAGE-BLANK-WATER-REF-5

Tgt Ion: 95 Resp: 59403

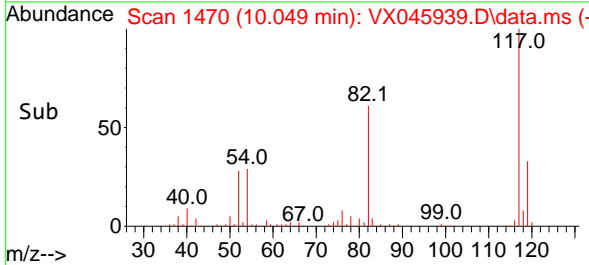
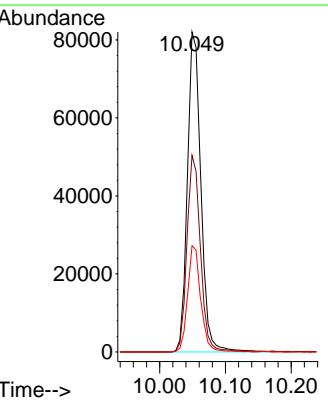
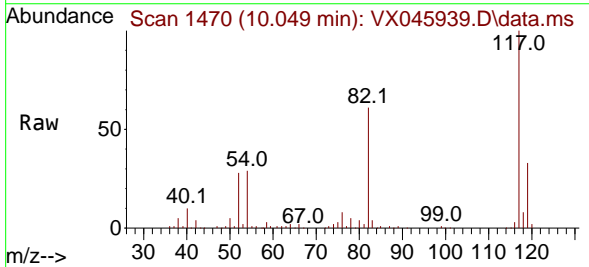
Ion	Ratio	Lower	Upper
95	100		
174	66.1	0.0	135.8
176	63.8	0.0	131.4

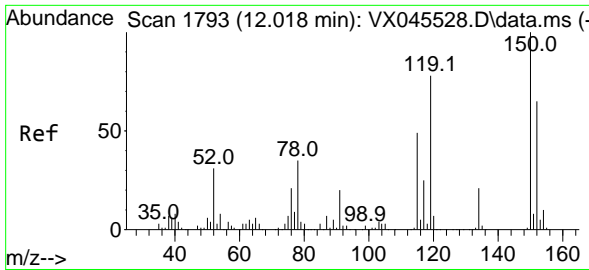


#63
 Chlorobenzene-d5
 Concen: 50.000 ug/l
 RT: 10.049 min Scan# 1470
 Delta R.T. 0.000 min
 Lab File: VX045939.D
 Acq: 25 Apr 2025 13:23

Tgt Ion: 117 Resp: 117188

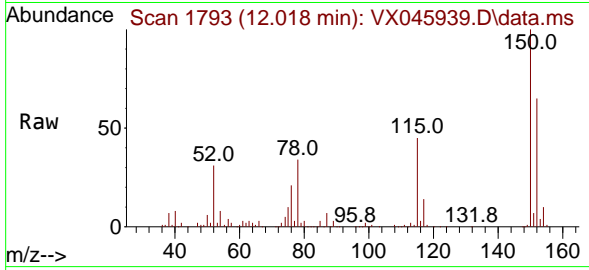
Ion	Ratio	Lower	Upper
117	100		
82	61.4	49.2	73.8
119	33.2	25.1	37.7



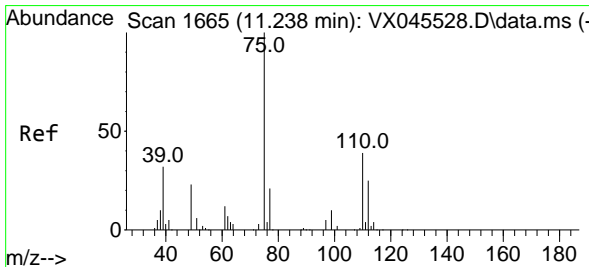
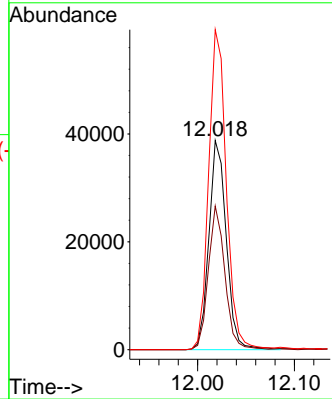
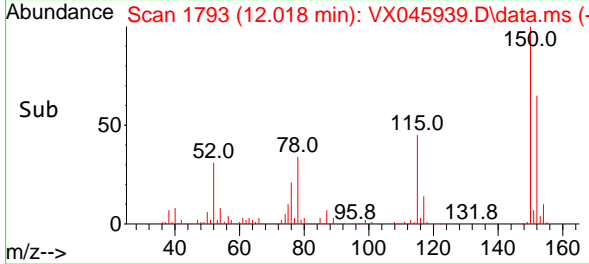


#72
 1,4-Dichlorobenzene-d4
 Concen: 50.000 ug/l
 RT: 12.018 min Scan# 1
 Delta R.T. 0.000 min
 Lab File: VX045939.D
 Acq: 25 Apr 2025 13:23

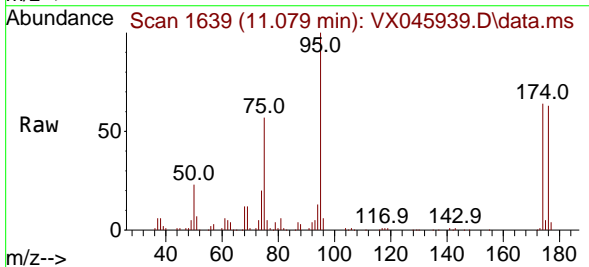
Instrument : MSVOA_X
 ClientSampleId : STORAGE-BLANK-WATER-REF-5



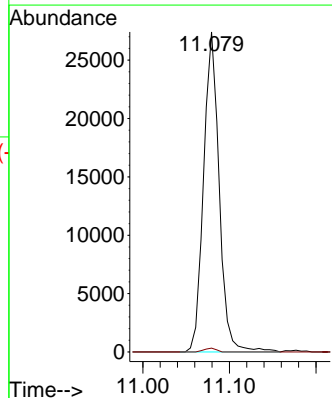
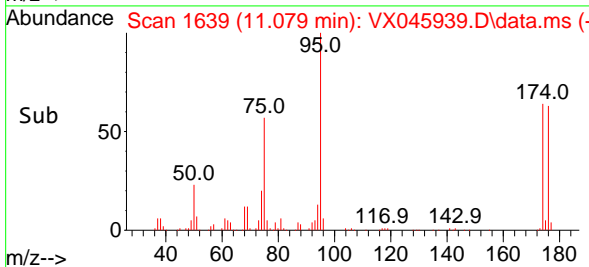
Tgt Ion:152 Resp: 48670
 Ion Ratio Lower Upper
 152 100
 115 65.5 46.9 140.7
 150 154.9 0.0 349.4

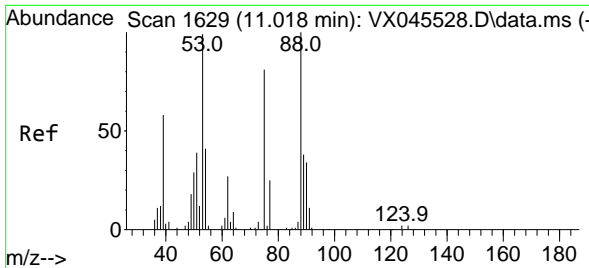


#76
 1,2,3-Trichloropropane
 Concen: 28.932 ug/l
 RT: 11.079 min Scan# 1639
 Delta R.T. -0.158 min
 Lab File: VX045939.D
 Acq: 25 Apr 2025 13:23



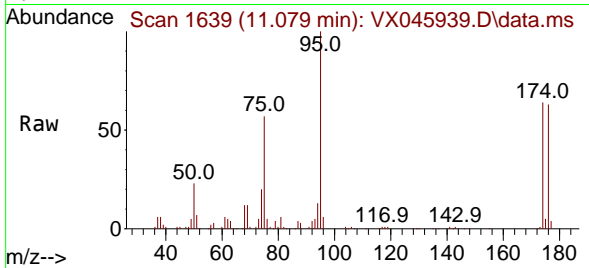
Tgt Ion: 75 Resp: 34347
 Ion Ratio Lower Upper
 75 100
 77 0.9 20.0 59.9#





#81
 trans-1,4-Dichloro-2-butene
 Concen: 98.191 ug/l
 RT: 11.079 min Scan# 1
 Delta R.T. 0.061 min
 Lab File: VX045939.D
 Acq: 25 Apr 2025 13:23

Instrument :
 MSVOA_X
 ClientSampleId :
 STORAGE-BLANK-WATER-REF-5



Tgt Ion: 75 Resp: 34347
 Ion Ratio Lower Upper
 75 100
 53 0.0 101.8 152.6#
 89 0.0 37.2 55.8#

