

Data Path : Z:\voasrv\HPCHEM1\MSVOA_X\Data\VX042623\
 Data File : VX035309.D
 Acq On : 26 Apr 2023 13:40
 Operator : JC/MD
 Sample : 02479-12ME
 Misc : 5.08g/5mL/100uL/5.00mL/MSVOA_X/MEOH
 ALS Vial : 12 Sample Multiplier: 1

Instrument :
 MSVOA_X
 ClientSampleId :
 EW953ME

Quant Time: Apr 27 04:42:10 2023
 Quant Method : Z:\voasrv\HPCHEM1\MSVOA_X\Method\SFAMXMLM041823WMA.M
 Quant Title : VOC Analysis
 QLast Update : Tue Apr 25 03:03:54 2023
 Response via : Initial Calibration

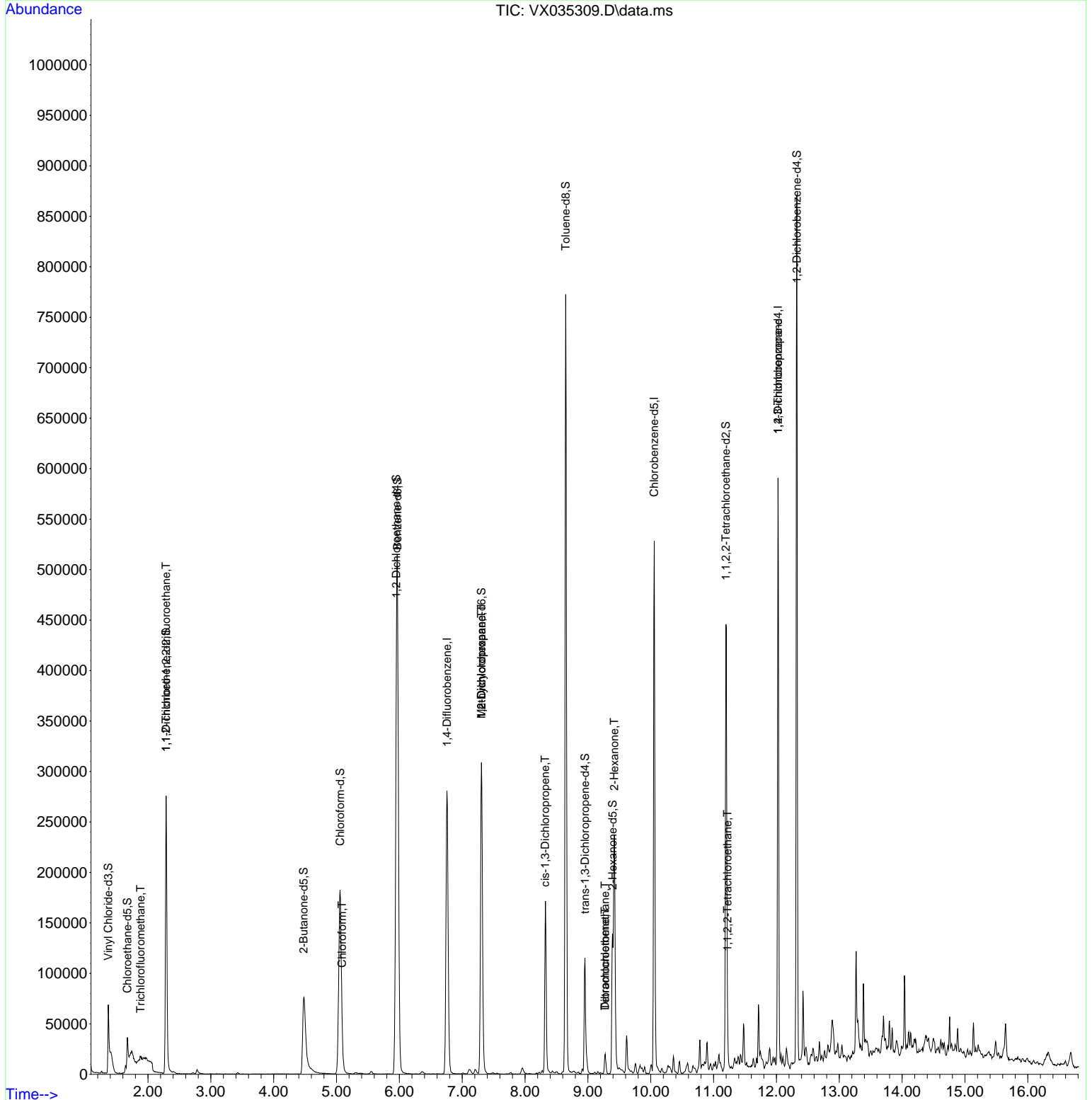
Compound	R.T.	QIon	Response	Conc	Units	Dev(Min)
Internal Standards						
1) 1,4-Difluorobenzene	6.757	114	296708	50.000	ug/L	0.00
28) Chlorobenzene-d5	10.055	117	253151	50.000	ug/L	0.00
58) 1,4-Dichlorobenzene-d4	12.024	152	124957	50.000	ug/L	0.00
System Monitoring Compounds						
4) Vinyl Chloride-d3	1.368	65	60613	31.682	ug/L	0.00
Spiked Amount	50.000	Range 60 - 135	Recovery =	63.360%		
7) Chloroethane-d5	1.673	69	32818	23.739	ug/L	0.00
Spiked Amount	50.000	Range 70 - 130	Recovery =	47.480%#		
11) 1,1-Dichloroethene-d2	2.288	65	51634	56.405	ug/L	-0.02
Spiked Amount	50.000	Range 60 - 125	Recovery =	112.800%		
21) 2-Butanone-d5	4.477	46	174700	137.027	ug/L	0.02
Spiked Amount	100.000	Range 40 - 130	Recovery =	137.030%#		
24) Chloroform-d	5.056	84	227386	63.112	ug/L	0.00
Spiked Amount	50.000	Range 70 - 125	Recovery =	126.220%#		
26) 1,2-Dichloroethane-d4	5.952	65	160370	69.314	ug/L	0.00
Spiked Amount	50.000	Range 70 - 125	Recovery =	138.620%#		
32) Benzene-d6	5.971	84	500477	68.822	ug/L	0.00
Spiked Amount	50.000	Range 70 - 125	Recovery =	137.640%#		
36) 1,2-Dichloropropane-d6	7.306	67	156527	70.465	ug/L	0.00
Spiked Amount	50.000	Range 70 - 120	Recovery =	140.920%#		
41) Toluene-d8	8.647	98	456583	68.699	ug/L	0.00
Spiked Amount	50.000	Range 80 - 120	Recovery =	137.400%#		
43) trans-1,3-Dichloroprop...	8.952	79	57587	59.321	ug/L	0.00
Spiked Amount	50.000	Range 60 - 125	Recovery =	118.640%		
47) 2-Hexanone-d5	9.391	63	35000	39.236	ug/L	0.01
Spiked Amount	100.000	Range 45 - 130	Recovery =	39.240%#		
56) 1,1,2,2-Tetrachloroeth...	11.195	84	192767	70.859	ug/L	0.00
Spiked Amount	50.000	Range 65 - 120	Recovery =	141.720%#		
66) 1,2-Dichlorobenzene-d4	12.323	152	177615	73.349	ug/L	0.00
Spiked Amount	50.000	Range 80 - 120	Recovery =	146.700%#		
Target Compounds						
9) Trichlorofluoromethane	1.880	101	2589	0.910	ug/L	99
10) 1,1,2-Trichloro-1,2,2-...	2.288	101	1733	0.892	ug/L #	19
25) Chloroform	5.087	83	7145	2.003	ug/L	96
35) Methylcyclohexane	7.306	83	39360	14.331	ug/L #	18
37) 1,2-Dichloropropane	7.306	63	17648	8.744	ug/L #	86
39) cis-1,3-Dichloropropene	8.318	75	3716	1.231	ug/L #	62
46) Tetrachloroethene	9.275	164	3482	2.292	ug/L	90
48) 2-Hexanone	9.421	43	8104	4.012	ug/L #	75
49) Dibromochloromethane	9.275	129	3286	1.805	ug/L #	10
57) 1,1,2,2-Tetrachloroethane	11.220	83	3558	1.260	ug/L #	28
61) 1,2,3-Trichloropropane	12.024	75	14506	6.288	ug/L #	68

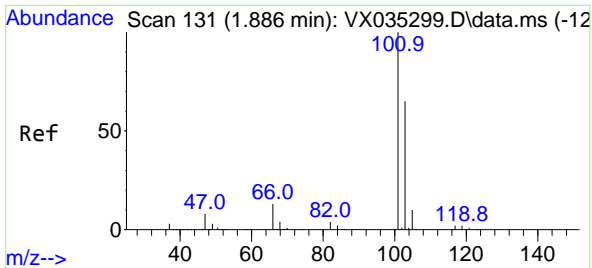
(#) = qualifier out of range (m) = manual integration (+) = signals summed

Data Path : Z:\voasrv\HPCHEM1\MSVOA_X\Data\VX042623\
 Data File : VX035309.D
 Acq On : 26 Apr 2023 13:40
 Operator : JC/MD
 Sample : 02479-12ME
 Misc : 5.08g/5mL/100uL/5.00mL/MSVOA_X/MEOH
 ALS Vial : 12 Sample Multiplier: 1

Instrument :
 MSVOA_X
 ClientSampleId :
 EW953ME

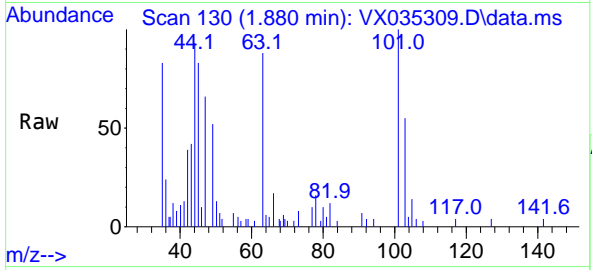
Quant Time: Apr 27 04:42:10 2023
 Quant Method : Z:\voasrv\HPCHEM1\MSVOA_X\Method\SFAMXLM041823WMA.M
 Quant Title : VOC Analysis
 QLast Update : Tue Apr 25 03:03:54 2023
 Response via : Initial Calibration



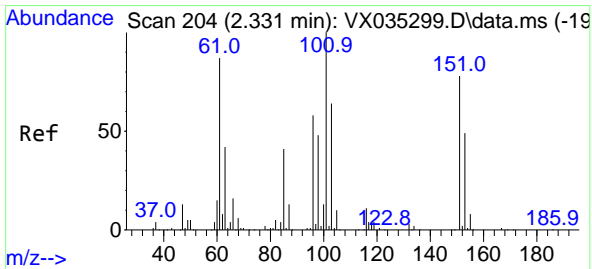
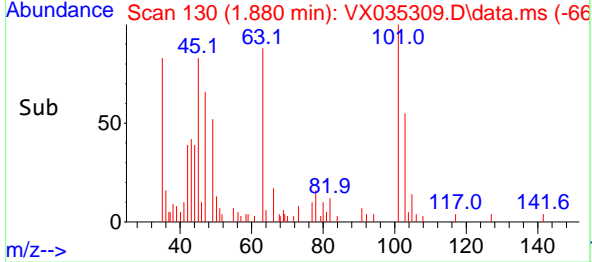
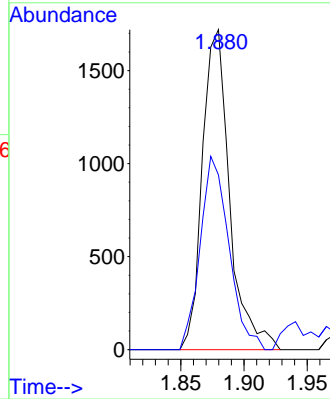


#9
 Trichlorofluoromethane
 Concen: 0.910 ug/L
 RT: 1.880 min Scan# 111
 Delta R.T. -0.012 min
 Lab File: VX035309.D
 Acq: 26 Apr 2023 13:40

Instrument : MSVOA_X
 ClientSampleId : EW953ME

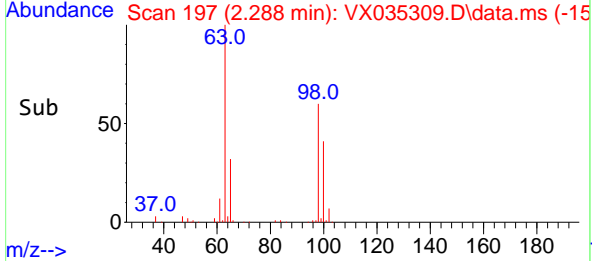
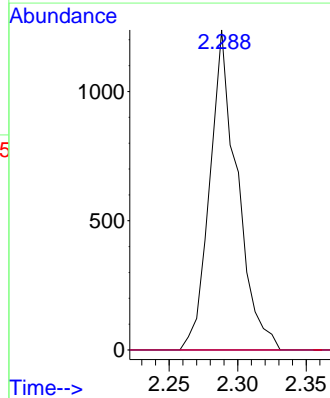
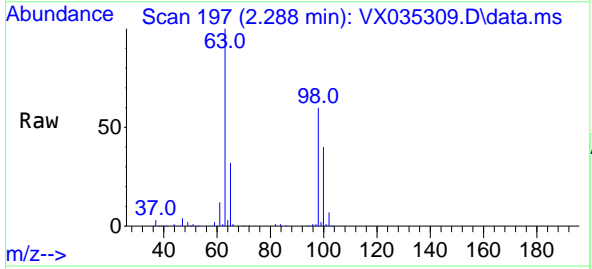


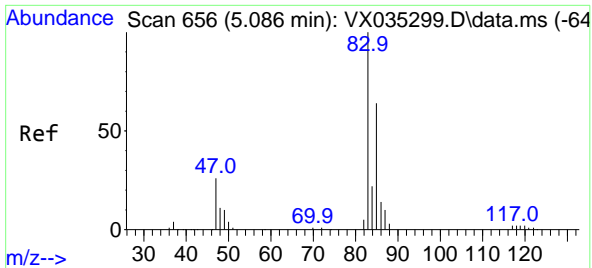
Tgt Ion:101 Resp: 2589
 Ion Ratio Lower Upper
 101 100
 103 63.5 51.7 77.5



#10
 1,1,2-Trichloro-1,2,2-trifluoroethane
 Concen: 0.892 ug/L
 RT: 2.288 min Scan# 197
 Delta R.T. -0.042 min
 Lab File: VX035309.D
 Acq: 26 Apr 2023 13:40

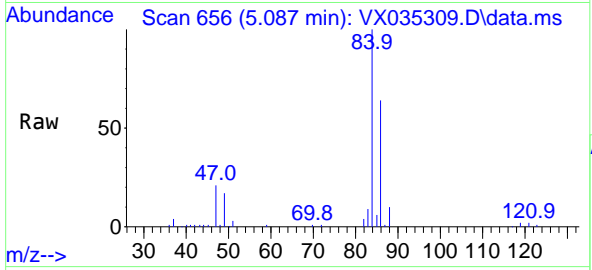
Tgt Ion:101 Resp: 1733
 Ion Ratio Lower Upper
 101 100
 85 0.0 34.2 51.2#
 151 0.0 61.1 91.7#



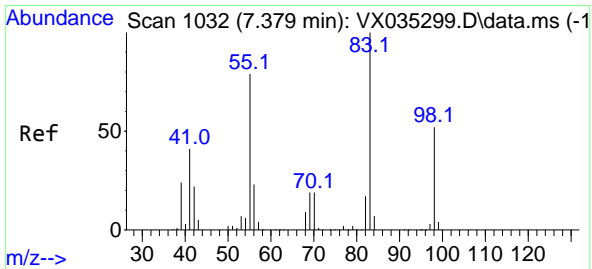
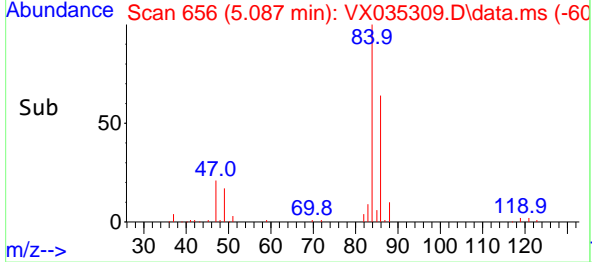
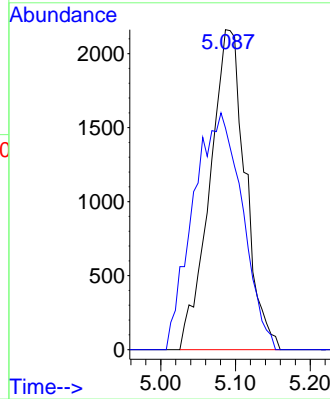


#25
 Chloroform
 Concen: 2.003 ug/L
 RT: 5.087 min Scan# 61
 Delta R.T. 0.000 min
 Lab File: VX035309.D
 Acq: 26 Apr 2023 13:40

Instrument : MSVOA_X
 ClientSampleId : EW953ME

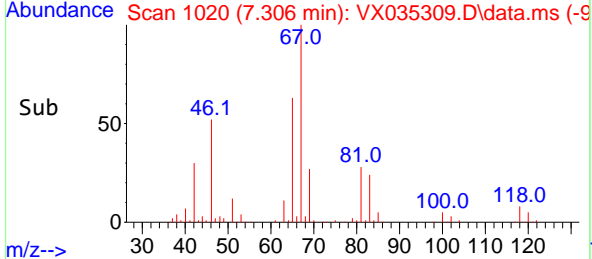
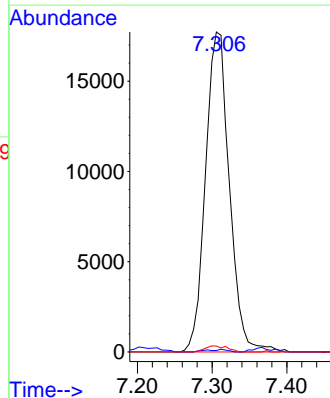
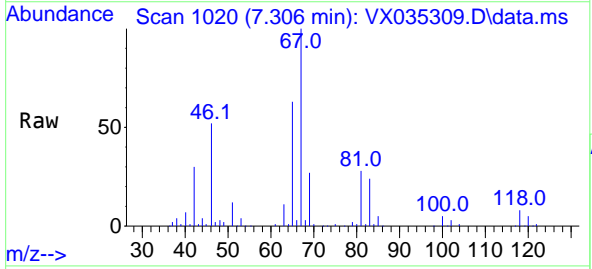


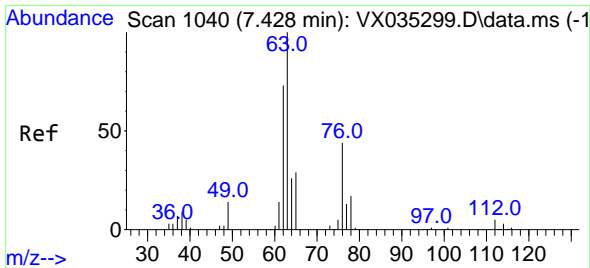
Tgt Ion: 83 Resp: 7145
 Ion Ratio Lower Upper
 83 100
 85 69.2 46.0 85.4



#35
 Methylcyclohexane
 Concen: 14.331 ug/L
 RT: 7.306 min Scan# 1020
 Delta R.T. -0.073 min
 Lab File: VX035309.D
 Acq: 26 Apr 2023 13:40

Tgt Ion: 83 Resp: 39360
 Ion Ratio Lower Upper
 83 100
 55 0.3 62.2 93.2#
 98 1.2 39.3 58.9#

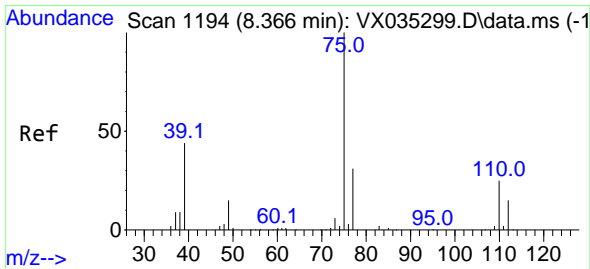
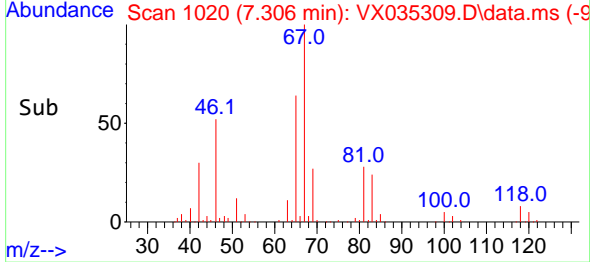
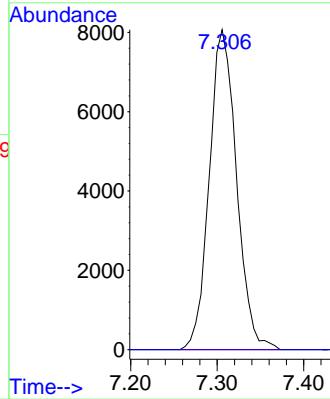
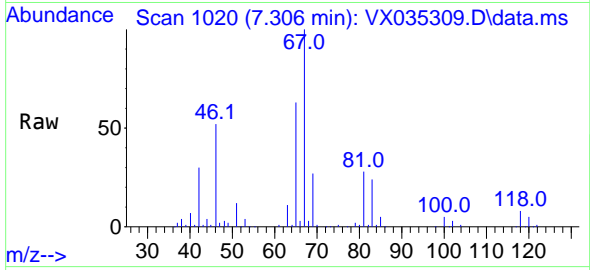




#37
 1,2-Dichloropropane
 Concen: 8.744 ug/L
 RT: 7.306 min Scan# 1186
 Delta R.T. -0.116 min
 Lab File: VX035309.D
 Acq: 26 Apr 2023 13:40

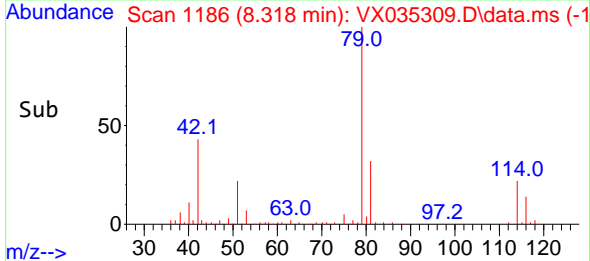
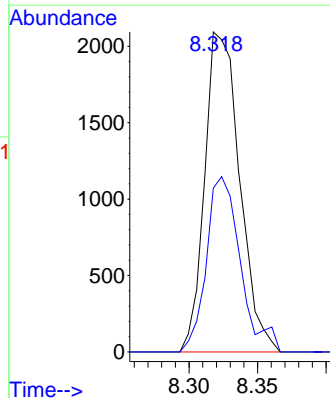
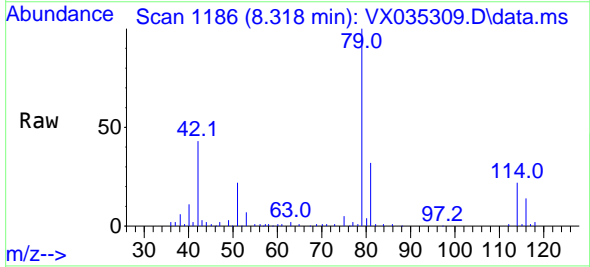
Instrument : MSVOA_X
 ClientSampleId : EW953ME

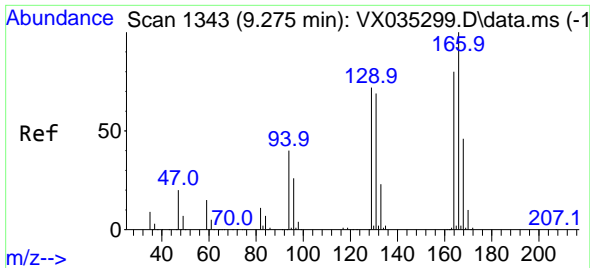
Tgt Ion: 63 Resp: 17648
 Ion Ratio Lower Upper
 63 100
 112 0.0 3.7 5.5#



#39
 cis-1,3-Dichloropropene
 Concen: 1.231 ug/L
 RT: 8.318 min Scan# 1186
 Delta R.T. -0.043 min
 Lab File: VX035309.D
 Acq: 26 Apr 2023 13:40

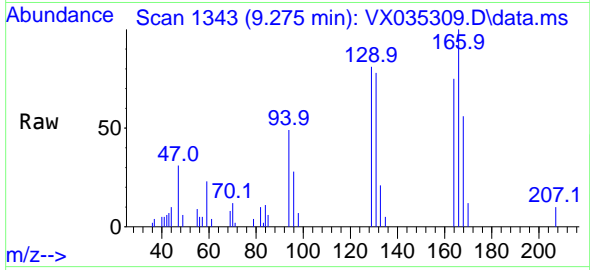
Tgt Ion: 75 Resp: 3716
 Ion Ratio Lower Upper
 75 100
 77 51.2 21.4 39.8#



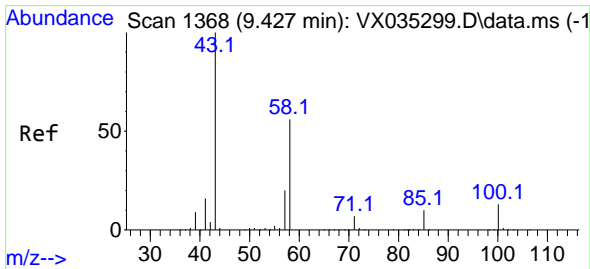
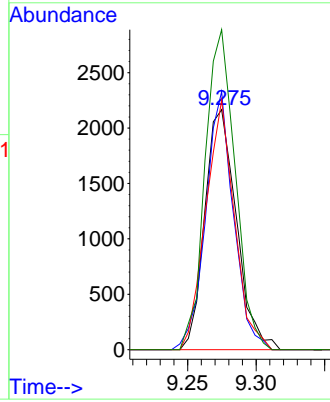
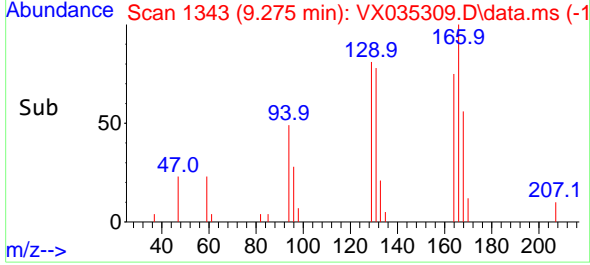


#46
 Tetrachloroethene
 Concen: 2.292 ug/L
 RT: 9.275 min Scan# 11
 Delta R.T. 0.006 min
 Lab File: VX035309.D
 Acq: 26 Apr 2023 13:40

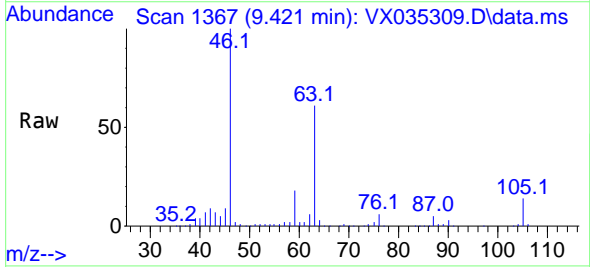
Instrument :
 MSVOA_X
 ClientSampleId :
 EW953ME



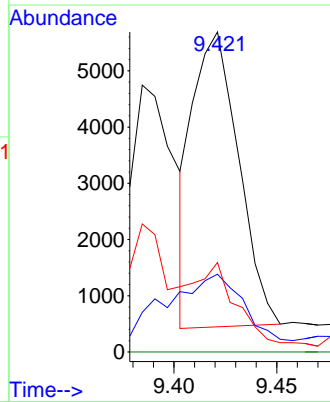
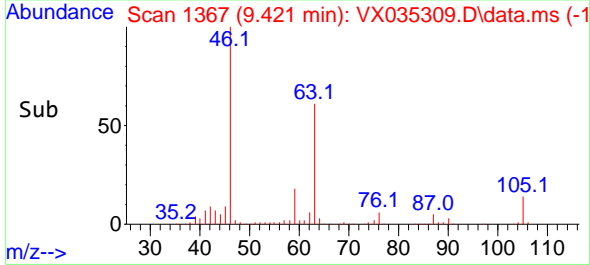
Tgt Ion:164 Resp: 3482
 Ion Ratio Lower Upper
 164 100
 129 107.5 66.1 122.8
 131 104.0 65.0 120.8
 166 133.3 88.6 164.6

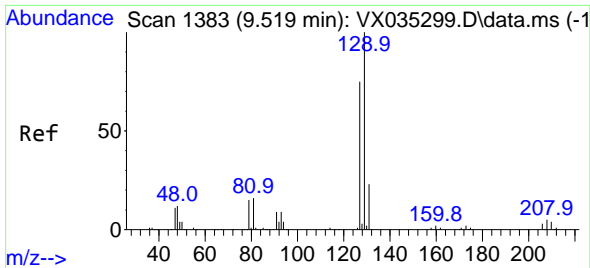


#48
 2-Hexanone
 Concen: 4.012 ug/L
 RT: 9.421 min Scan# 1367
 Delta R.T. -0.006 min
 Lab File: VX035309.D
 Acq: 26 Apr 2023 13:40



Tgt Ion: 43 Resp: 8104
 Ion Ratio Lower Upper
 43 100
 58 36.7 43.2 64.8#
 57 30.1 15.4 23.0#
 100 0.0 10.0 15.0#

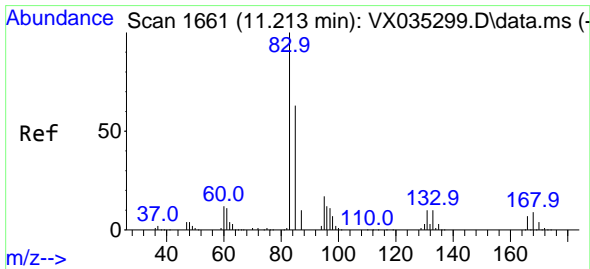
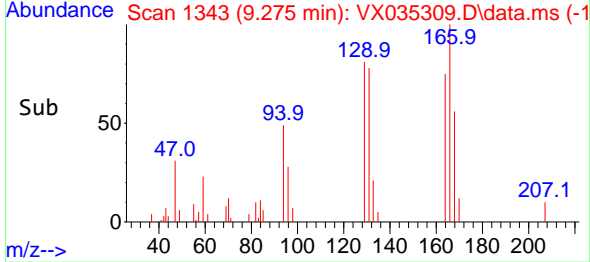
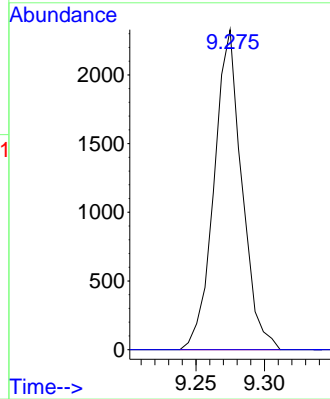
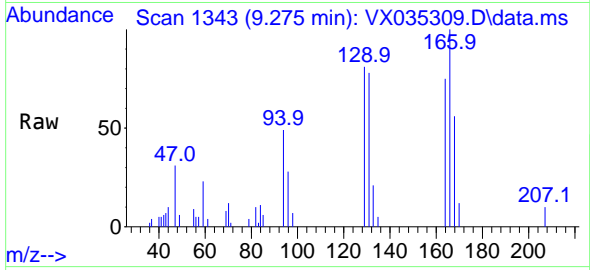




#49
 Dibromochloromethane
 Concen: 1.805 ug/L
 RT: 9.275 min Scan# 11
 Delta R.T. -0.244 min
 Lab File: VX035309.D
 Acq: 26 Apr 2023 13:40

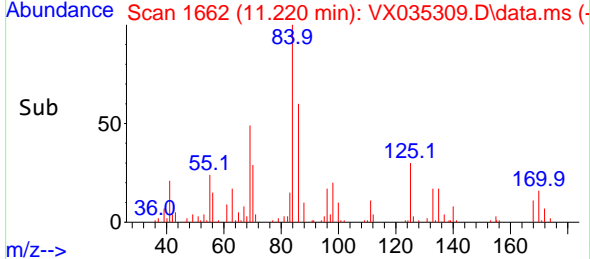
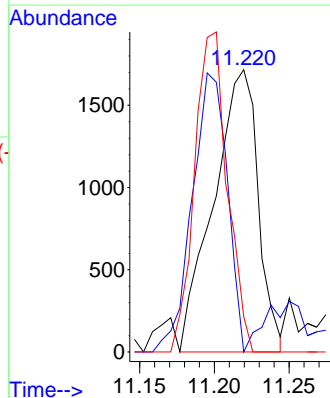
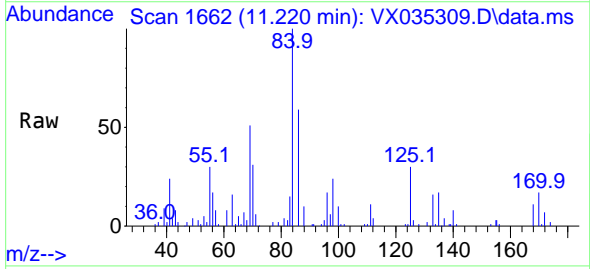
Instrument : MSVOA_X
 ClientSampleId : EW953ME

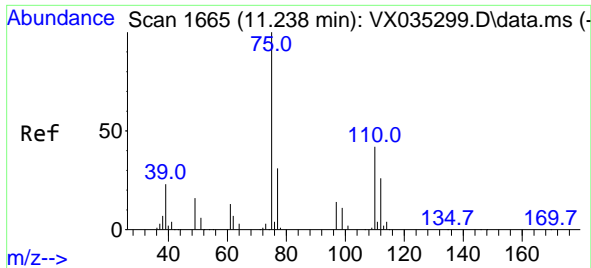
Tgt Ion:129 Resp: 3286
 Ion Ratio Lower Upper
 129 100
 127 0.0 54.8 101.8#



#57
 1,1,2,2-Tetrachloroethane
 Concen: 1.260 ug/L
 RT: 11.220 min Scan# 1662
 Delta R.T. 0.006 min
 Lab File: VX035309.D
 Acq: 26 Apr 2023 13:40

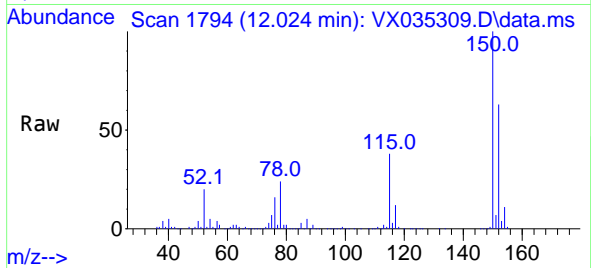
Tgt Ion: 83 Resp: 3558
 Ion Ratio Lower Upper
 83 100
 85 0.0 46.0 85.4#
 131 12.5 8.3 12.5#





#61
 1,2,3-Trichloropropane
 Concen: 6.288 ug/L
 RT: 12.024 min Scan# 11
 Delta R.T. 0.787 min
 Lab File: VX035309.D
 Acq: 26 Apr 2023 13:40

Instrument :
 MSVOA_X
 ClientSampleId :
 EW953ME



Tgt Ion: 75 Resp: 14506

Ion	Ratio	Lower	Upper
75	100		
77	30.8	25.6	38.4
110	5.8	32.5	48.7#

