

Data Path : Z:\voasrv\HPCHEM1\MSVOA_X\Data\VX042623\
 Data File : VX035301.D
 Acq On : 26 Apr 2023 10:19
 Operator : JC/MD
 Sample : VX0426WBL01
 Misc : 5.0mL/MSVOA_X/WATER
 ALS Vial : 4 Sample Multiplier: 1

Instrument :
 MSVOA_X
 ClientSampleId :
 VBLK629

Integration Parameters: LSCINT.P

Integrator: RTE
 Smoothing : OFF
 Sampling : 1
 Start Thrs : 0.2
 Stop Thrs : 0

Filtering: 5
 Min Area: 0 % of largest Peak
 Max Peaks: 100
 Peak Location: TOP

If leading or trailing edge < 100 prefer < Baseline drop else tangent >
 Peak separation: 5

Method : Z:\voasrv\HPCHEM1\MSVOA_X\Method\SFAMXLM041823WMA.M
 Title : VOC Analysis

Signal : TIC: VX035301.D\data.ms

peak #	R.T. min	first scan	max scan	last scan	PK TY	peak height	corr. area	corr. % max.	% of total
1	1.264	26	29	32	rVB3	1737	1710	0.13%	0.017%
2	1.368	42	46	58	rBV	126240	140242	10.62%	1.358%
3	1.673	91	96	111	rBV	103798	134834	10.21%	1.306%
4	2.307	194	200	212	rVB	278002	437404	33.13%	4.237%
5	2.447	222	223	225	rBV2	277	143	0.01%	0.001%
6	2.508	231	233	234	rBV2	714	640	0.05%	0.006%
7	2.678	258	261	263	rBV2	261	312	0.02%	0.003%
8	2.788	274	279	287	rBV4	2137	3855	0.29%	0.037%
9	2.995	310	313	315	rBV2	264	253	0.02%	0.002%
10	3.178	341	343	346	rVB2	225	200	0.02%	0.002%
11	3.282	357	360	362	rBV	162	221	0.02%	0.002%
12	3.453	386	388	390	rVB	306	265	0.02%	0.003%
13	3.739	434	435	437	rVB	274	185	0.01%	0.002%
14	3.843	448	452	453	rVB	216	181	0.01%	0.002%
15	3.861	453	455	456	rBV	348	154	0.01%	0.001%
16	3.947	466	469	471	rBV2	185	245	0.02%	0.002%
17	4.038	482	484	487	rBV2	237	194	0.01%	0.002%
18	4.105	493	495	498	rVB2	294	234	0.02%	0.002%
19	4.209	511	512	516	rVB2	283	260	0.02%	0.003%
20	4.385	539	541	542	rVB	284	152	0.01%	0.001%
21	4.465	545	554	576	rBV	83819	267628	20.27%	2.592%
22	4.727	595	597	598	rBV2	365	273	0.02%	0.003%
23	4.831	612	614	616	rVB	291	170	0.01%	0.002%
24	4.959	633	635	636	rVB2	279	145	0.01%	0.001%
25	5.056	638	651	669	rVV	165838	526124	39.85%	5.096%
26	5.251	682	683	686	rVB	313	189	0.01%	0.002%
27	5.324	693	695	697	rVB2	210	165	0.01%	0.002%
28	5.398	700	707	714	rVB4	972	2716	0.21%	0.026%
29	5.556	726	733	739	rBV4	1796	4394	0.33%	0.043%
30	5.715	756	759	764	rVB2	173	231	0.02%	0.002%
31	5.971	788	801	819	rBV2	443573	1320388	100.00%	12.790%
32	6.342	860	862	866	rBV2	264	419	0.03%	0.004%
33	6.531	890	893	895	rBV	273	266	0.02%	0.003%
34	6.556	895	897	899	rBV2	184	187	0.01%	0.002%
35	6.757	921	930	948	rBV	404156	972691	73.67%	9.422%
36	6.983	965	967	969	rVB	192	152	0.01%	0.001%

Data Path : Z:\voasrv\HPCHEM1\MSVOA_X\Data\VX042623\
 Data File : VX035301.D
 Acq On : 26 Apr 2023 10:19
 Operator : JC/MD
 Sample : VX0426WBL01
 Misc : 5.0mL/MSVOA_X/WATER
 ALS Vial : 4 Sample Multiplier: 1

Instrument :
 MSVOA_X
 ClientSampleId :
 VBLK629

Integration Parameters: LSCINT.P

Integrator: RTE
 Smoothing : OFF
 Sampling : 1
 Start Thrs: 0.2
 Stop Thrs : 0

Filtering: 5
 Min Area: 0 % of largest Peak
 Max Peaks: 100
 Peak Location: TOP

If leading or trailing edge < 100 prefer < Baseline drop else tangent >
 Peak separation: 5

Method : Z:\voasrv\HPCHEM1\MSVOA_X\Method\SFAMXLM041823WMA.M
 Title : VOC Analysis

37	7.117	983	989	1000	rVB5	4523	11345	0.86%	0.110%
38	7.202	1000	1003	1006	rVB	238	273	0.02%	0.003%
39	7.226	1006	1007	1011	rBV2	162	184	0.01%	0.002%
40	7.306	1011	1020	1038	rBV	279699	607700	46.02%	5.886%
41	7.879	1112	1114	1118	rBV2	117	130	0.01%	0.001%
42	7.946	1120	1125	1132	rVV3	1309	2902	0.22%	0.028%
43	8.141	1155	1157	1159	rVB2	192	158	0.01%	0.002%
44	8.324	1181	1187	1201	rBV	169204	278408	21.09%	2.697%
45	8.488	1211	1214	1216	rBV2	518	680	0.05%	0.007%
46	8.647	1233	1240	1261	rBV	688114	1078484	81.68%	10.446%
47	8.879	1275	1278	1280	rVB2	369	427	0.03%	0.004%
48	8.897	1280	1281	1284	rBV	237	242	0.02%	0.002%
49	8.952	1284	1290	1299	rBV	113725	174352	13.20%	1.689%
50	9.202	1325	1331	1333	rBV3	284	460	0.03%	0.004%
51	9.275	1338	1343	1348	rVB4	1323	1752	0.13%	0.017%
52	9.324	1348	1351	1352	rBV	329	203	0.02%	0.002%
53	9.385	1356	1361	1382	rBV	404739	584583	44.27%	5.662%
54	9.714	1413	1415	1417	rBV2	216	173	0.01%	0.002%
55	9.860	1437	1439	1441	rVB2	300	213	0.02%	0.002%
56	10.055	1465	1471	1491	rBV	775648	1091309	82.65%	10.571%
57	10.202	1491	1495	1499	rVB3	904	1473	0.11%	0.014%
58	10.305	1509	1512	1517	rVB3	791	1001	0.08%	0.010%
59	10.384	1522	1525	1527	rBV	293	413	0.03%	0.004%
60	10.433	1531	1533	1538	rBV3	229	296	0.02%	0.003%
61	10.476	1538	1540	1541	rVB2	261	150	0.01%	0.001%
62	10.653	1564	1569	1570	rBV2	791	1175	0.09%	0.011%
63	10.921	1611	1613	1615	rBV	184	168	0.01%	0.002%
64	10.964	1615	1620	1624	rVV3	628	1006	0.08%	0.010%
65	11.092	1638	1641	1645	rVB3	774	1080	0.08%	0.010%
66	11.189	1652	1657	1674	rBV	465714	618337	46.83%	5.989%
67	11.451	1697	1700	1705	rVB3	851	988	0.07%	0.010%
68	11.604	1721	1725	1728	rBV2	193	282	0.02%	0.003%
69	11.677	1734	1737	1740	rBV	187	255	0.02%	0.002%
70	11.713	1740	1743	1746	rBV	503	519	0.04%	0.005%
71	11.756	1746	1750	1753	rBV3	830	982	0.07%	0.010%
72	11.841	1761	1764	1765	rVV2	208	164	0.01%	0.002%
73	11.976	1781	1786	1788	rBV4	1740	2043	0.15%	0.020%
74	12.018	1788	1793	1806	rVV	798899	1061012	80.36%	10.277%
75	12.177	1817	1819	1821	rBV2	291	196	0.01%	0.002%
76	12.317	1837	1842	1856	rVB	756096	963073	72.94%	9.329%

Data Path : Z:\voasrv\HPCHEM1\MSVOA_X\Data\VX042623\
 Data File : VX035301.D
 Acq On : 26 Apr 2023 10:19
 Operator : JC/MD
 Sample : VX0426WBL01
 Misc : 5.0mL/MSVOA_X/WATER
 ALS Vial : 4 Sample Multiplier: 1

Instrument :
 MSVOA_X
 ClientSampleId :
 VBLK629

Integration Parameters: LSCINT.P

Integrator: RTE
 Smoothing : OFF
 Sampling : 1
 Start Thrs : 0.2
 Stop Thrs : 0

Filtering: 5
 Min Area: 0 % of largest Peak
 Max Peaks: 100
 Peak Location: TOP

If leading or trailing edge < 100 prefer < Baseline drop else tangent >
 Peak separation: 5

Method : Z:\voasrv\HPCHEM1\MSVOA_X\Method\SFAMXML041823WMA.M
 Title : VOC Analysis

77	12.482	1868	1869	1870	rBV	360	219	0.02%	0.002%
78	12.555	1878	1881	1883	rBV2	287	382	0.03%	0.004%
79	12.628	1892	1893	1898	rBV2	198	274	0.02%	0.003%
80	12.762	1911	1915	1918	rBV2	710	1029	0.08%	0.010%
81	12.975	1948	1950	1953	rBV	317	224	0.02%	0.002%
82	13.042	1959	1961	1964	rVB2	186	164	0.01%	0.002%
83	13.116	1970	1973	1978	rVB2	1361	1545	0.12%	0.015%
84	13.268	1995	1998	2001	rVB2	155	222	0.02%	0.002%
85	13.305	2001	2004	2005	rBV2	239	236	0.02%	0.002%
86	13.591	2047	2051	2055	rBV3	2080	3109	0.24%	0.030%
87	13.683	2064	2066	2069	rBV2	253	358	0.03%	0.003%
88	13.780	2078	2082	2086	rBV2	1811	2283	0.17%	0.022%
89	13.841	2090	2092	2093	rVV	307	249	0.02%	0.002%
90	13.872	2096	2097	2100	rVV2	355	292	0.02%	0.003%
91	13.908	2102	2103	2105	rVV	333	197	0.01%	0.002%
92	13.969	2109	2113	2117	rVV5	1603	2519	0.19%	0.024%
93	14.030	2121	2123	2124	rVB2	255	146	0.01%	0.001%
94	14.134	2135	2140	2145	rVB2	1339	1840	0.14%	0.018%
95	14.372	2178	2179	2181	rBV2	295	219	0.02%	0.002%
96	14.756	2239	2242	2243	rBV2	357	357	0.03%	0.003%
97	14.853	2254	2258	2259	rBV3	382	498	0.04%	0.005%
98	15.054	2289	2291	2293	rBV2	519	396	0.03%	0.004%
99	15.225	2317	2319	2321	rBV2	526	298	0.02%	0.003%
100	15.707	2395	2398	2400	rBV2	638	463	0.04%	0.004%

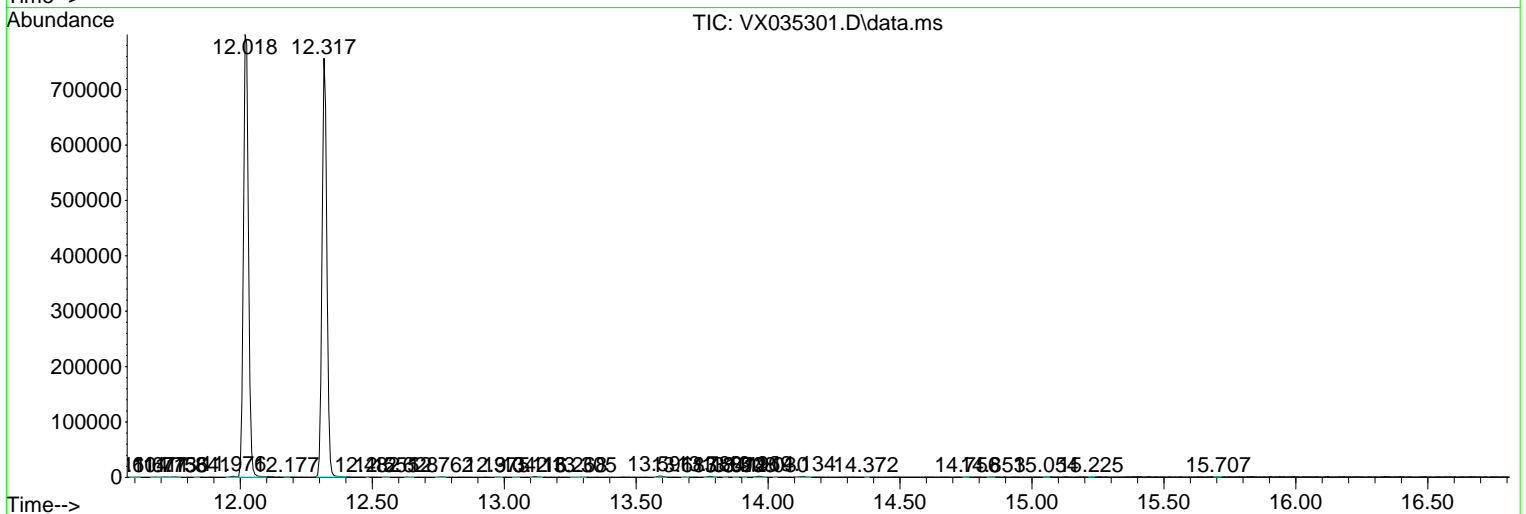
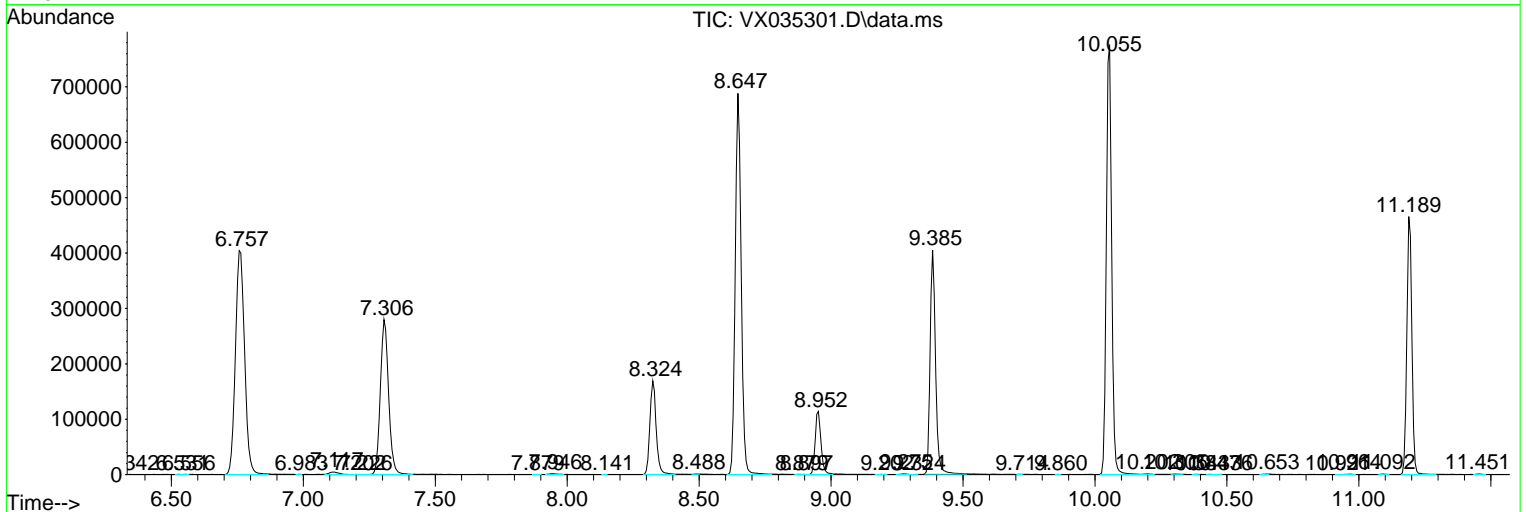
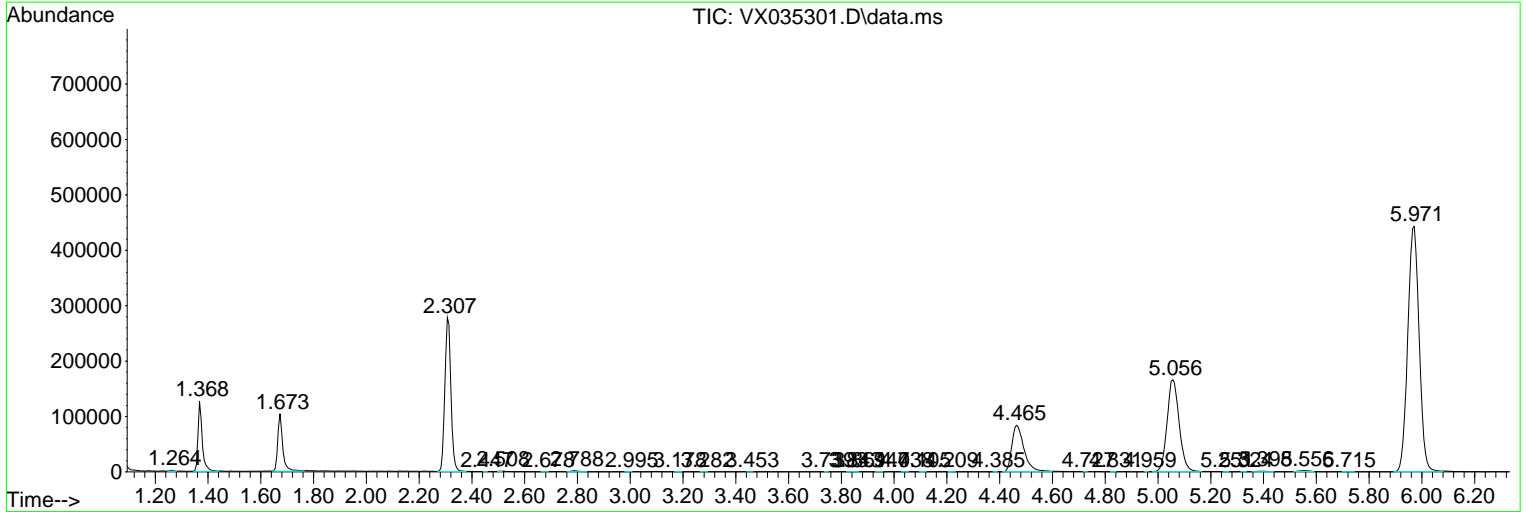
Sum of corrected areas: 10323932

Data Path : Z:\voasrv\HPCHEM1\MSVOA_X\Data\VX042623\
 Data File : VX035301.D
 Acq On : 26 Apr 2023 10:19
 Operator : JC/MD
 Sample : VX0426WBL01
 Misc : 5.0mL/MSVOA_X/WATER
 ALS Vial : 4 Sample Multiplier: 1

Instrument :
 MSVOA_X
 ClientSampleId :
 VBLK629

Quant Method : Z:\voasrv\HPCHEM1\MSVOA_X\Method\SFAMXML041823WMA.M
 Quant Title : VOC Analysis

TIC Library : C:\Database\NIST20.L
 TIC Integration Parameters: LSCINT.P



Library Search Compound Report

Data Path : Z:\voasrv\HPCHEM1\MSVOA_X\Data\VX042623\
Data File : VX035301.D
Acq On : 26 Apr 2023 10:19
Operator : JC/MD
Sample : VX0426WBL01
Misc : 5.0mL/MSVOA_X/WATER
ALS Vial : 4 Sample Multiplier: 1

Instrument :
MSVOA_X
ClientSampleId :
VBLK629

Quant Method : Z:\voasrv\HPCHEM1\MSVOA_X\Method\SFAMXML041823WMA.M
Quant Title : VOC Analysis

TIC Library : C:\Database\NIST20.L
TIC Integration Parameters: LSCINT.P

No Library Search Compounds Detected

Data Path : Z:\voasrv\HPCHEM1\MSVOA_X\Data\VX042623\
Data File : VX035301.D
Acq On : 26 Apr 2023 10:19
Operator : JC/MD
Sample : VX0426WBL01
Misc : 5.0mL/MSVOA_X/WATER
ALS Vial : 4 Sample Multiplier: 1

Instrument :
MSVOA_X
ClientSampleId :
VBLK629

Quant Method : Z:\voasrv\HPCHEM1\MSVOA_X\Method\SFAMXML041823WMA.M
Quant Title : VOC Analysis

TIC Library : C:\Database\NIST0.L
TIC Integration Parameters: LSCINT.P

TIC Top Hit name	RT	EstConc	Units	Response	--Internal Standard--			
					#	RT	Resp	Conc
