

Data Path : Z:\voasrv\HPCHEM1\MSVOA\_X\Data\VX042722\  
 Data File : VX028383.D  
 Acq On : 27 Apr 2022 17:06  
 Operator : JC/MD  
 Sample : N2572-05  
 Misc : 5.0mL/MSVOA\_X/WATER  
 ALS Vial : 19 Sample Multiplier: 1

Instrument :  
 MSVOA\_X  
 ClientSampleId :  
 MH-14D

Quant Time: Apr 28 04:24:32 2022  
 Quant Method : Z:\voasrv\HPCHEM1\MSVOA\_X\Method\82X041922W.M  
 Quant Title : SW846 8260  
 QLast Update : Tue Apr 19 13:38:04 2022  
 Response via : Initial Calibration

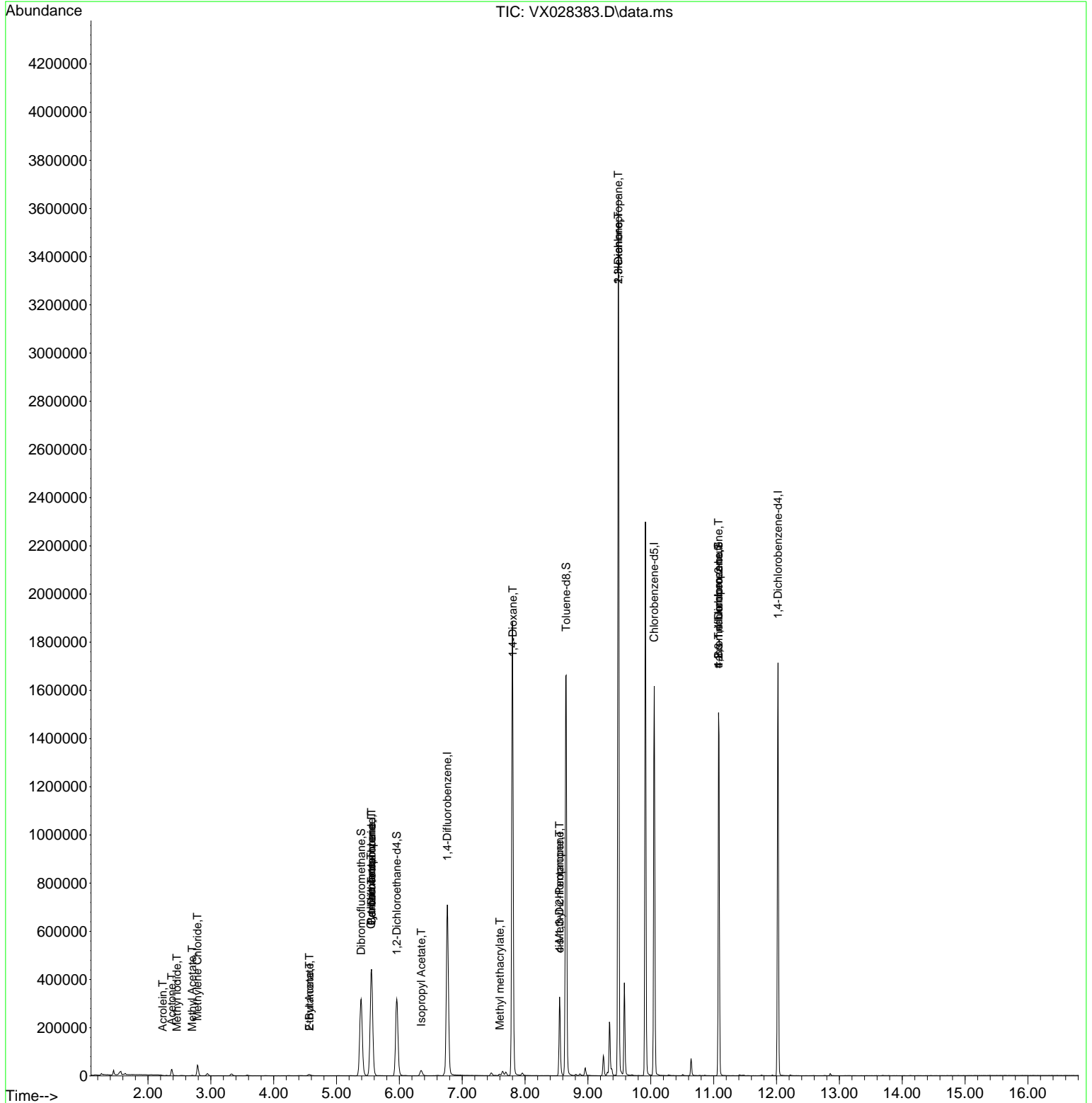
Compound	R.T.	QIon	Response	Conc	Units	Dev(Min)
-----						
Internal Standards						
1) Pentafluorobenzene	5.556	168	432704	50.000	ug/l	0.00
34) 1,4-Difluorobenzene	6.763	114	756744	50.000	ug/l	0.00
63) Chlorobenzene-d5	10.055	117	753861	50.000	ug/l	0.00
72) 1,4-Dichlorobenzene-d4	12.024	152	358283	50.000	ug/l	0.00
System Monitoring Compounds						
33) 1,2-Dichloroethane-d4	5.958	65	309202	54.804	ug/l	0.00
Spiked Amount	50.000	Range 61 - 141	Recovery	=	109.600%	
35) Dibromofluoromethane	5.391	113	276572	52.115	ug/l	0.00
Spiked Amount	50.000	Range 69 - 133	Recovery	=	104.220%	
50) Toluene-d8	8.653	98	1044799	51.258	ug/l	0.00
Spiked Amount	50.000	Range 65 - 126	Recovery	=	102.520%	
62) 4-Bromofluorobenzene	11.079	95	386524	49.595	ug/l	0.00
Spiked Amount	50.000	Range 58 - 135	Recovery	=	99.180%	
Target Compounds						
						Qvalue
3) Chloromethane	1.294	50	403	Below Cal		98
5) Bromomethane	1.611	94	708	Below Cal		91
6) Chloroethane	1.666	64	151	Below Cal	#	43
8) Diethyl Ether	2.130	74	70	Below Cal	#	7
10) Methyl Iodide	2.459	142	221	5.276	ug/l #	52
11) Tert butyl alcohol	2.946	59	4870	Below Cal	#	72
13) Acrolein	2.233	56	310	0.448	ug/l	97
16) Acetone	2.379	43	28517	15.238	ug/l	94
18) Methyl Acetate	2.703	43	2655	0.529	ug/l	94
20) Methylene Chloride	2.788	84	19783	4.726	ug/l	97
25) 2-Butanone	4.568	43	8203	2.455	ug/l	97
31) Cyclohexane	5.550	56	8514	1.239	ug/l #	1
36) 1,1-Dichloropropene	5.556	75	31317	4.524	ug/l #	50
37) Ethyl Acetate	4.568	43	8203	1.168	ug/l #	66
38) Carbon Tetrachloride	5.556	117	42347	5.419	ug/l #	15
43) Isopropyl Acetate	6.348	43	28300	2.476	ug/l	96
48) Methyl methacrylate	7.598	41	8051	1.534	ug/l #	7
49) 1,4-Dioxane	7.805	88	287	2.044	ug/l #	1
51) 4-Methyl-2-Pentanone	8.549	43	101129	13.785	ug/l #	44
54) cis-1,3-Dichloropropene	8.549	75	54452	6.380	ug/l #	68
57) 1,3-Dichloropropane	9.482	76	35148	3.807	ug/l #	43
59) 2-Hexanone	9.482	43	389191	68.489	ug/l #	45
76) 1,2,3-Trichloropropane	11.079	75	193714	27.472	ug/l #	38
81) trans-1,4-Dichloro-2-b...	11.079	75	193714	81.640	ug/l #	15

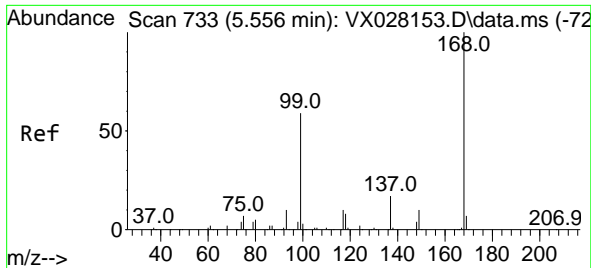
(#) = qualifier out of range (m) = manual integration (+) = signals summed

Data Path : Z:\voasrv\HPCHEM1\MSVOA\_X\Data\VX042722\  
 Data File : VX028383.D  
 Acq On : 27 Apr 2022 17:06  
 Operator : JC/MD  
 Sample : N2572-05  
 Misc : 5.0mL/MSVOA\_X/WATER  
 ALS Vial : 19 Sample Multiplier: 1

Instrument :  
 MSVOA\_X  
 ClientSampleId :  
 MH-14D

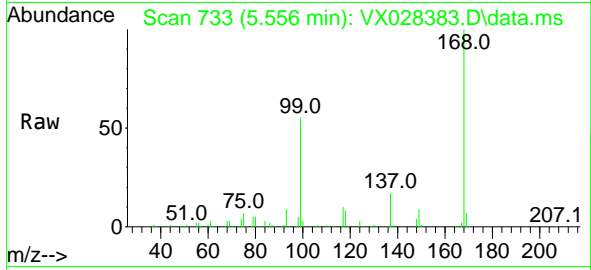
Quant Time: Apr 28 04:24:32 2022  
 Quant Method : Z:\voasrv\HPCHEM1\MSVOA\_X\Method\82X041922W.M  
 Quant Title : SW846 8260  
 QLast Update : Tue Apr 19 13:38:04 2022  
 Response via : Initial Calibration



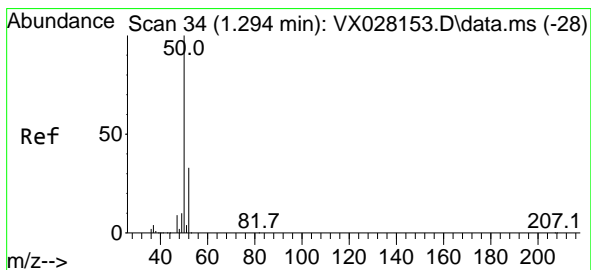
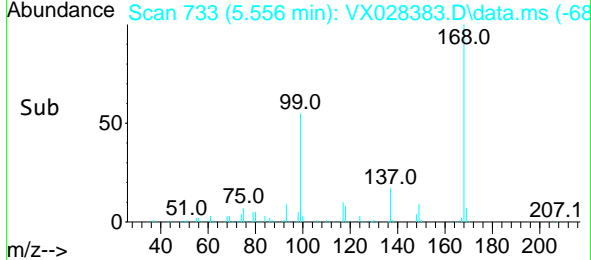
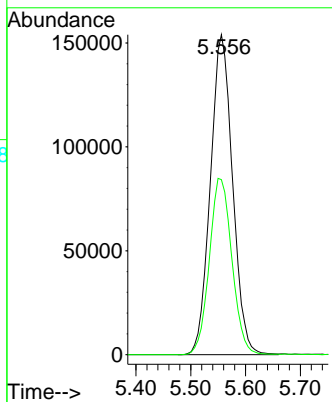


#1  
 Pentafluorobenzene  
 Concen: 50.000 ug/l  
 RT: 5.556 min Scan# 71  
 Delta R.T. -0.000 min  
 Lab File: VX028383.D  
 Acq: 27 Apr 2022 17:06

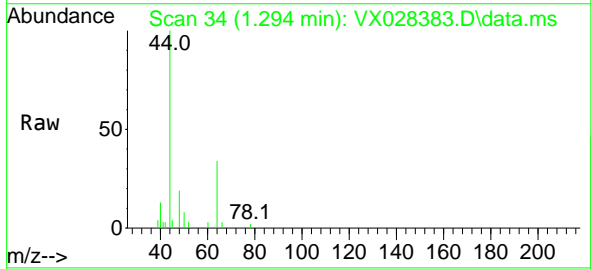
Instrument : MSVOA\_X  
 ClientSampleId : MH-14D



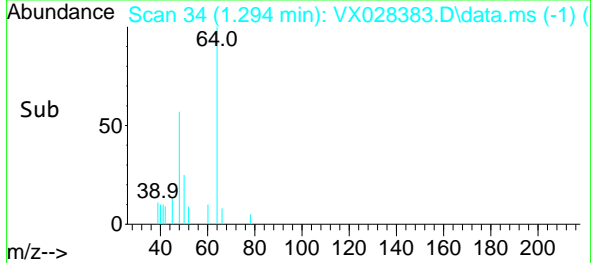
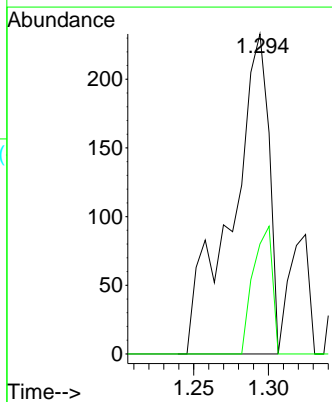
Tgt Ion:168 Resp: 432704  
 Ion Ratio Lower Upper  
 168 100  
 99 54.7 41.7 62.5

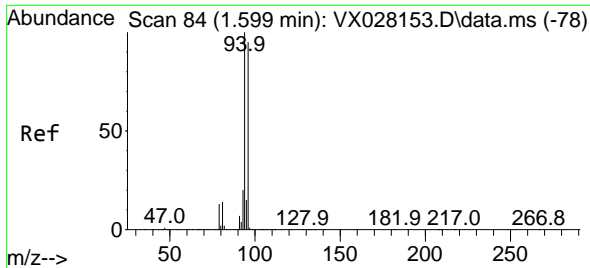


#3  
 Chloromethane  
 Concen: Below Cal  
 RT: 1.294 min Scan# 34  
 Delta R.T. 0.000 min  
 Lab File: VX028383.D  
 Acq: 27 Apr 2022 17:06



Tgt Ion: 50 Resp: 403  
 Ion Ratio Lower Upper  
 50 100  
 52 34.3 26.4 39.6

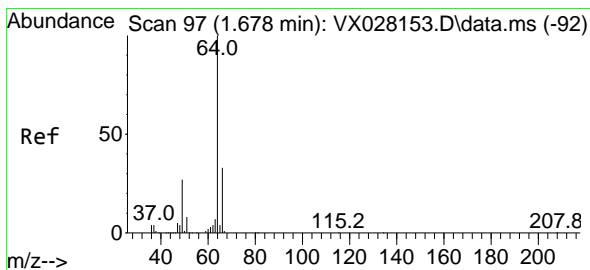
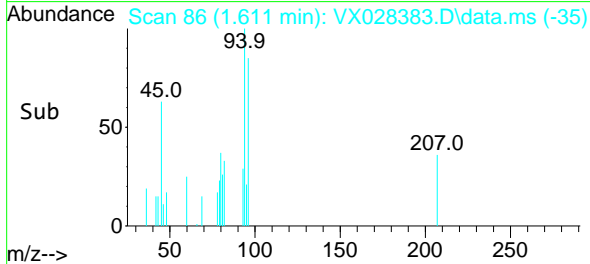
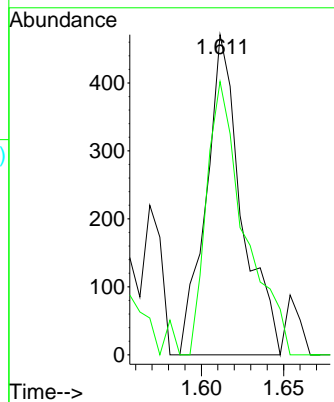
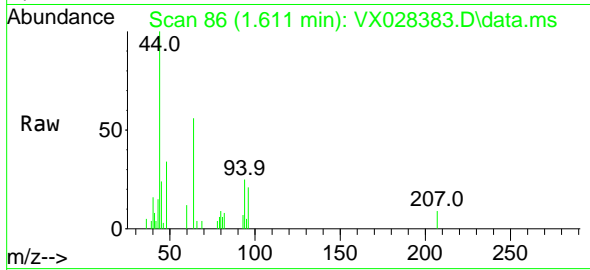




#5  
 Bromomethane  
 Concen: Below Cal  
 RT: 1.611 min Scan# 80  
 Delta R.T. 0.012 min  
 Lab File: VX028383.D  
 Acq: 27 Apr 2022 17:06

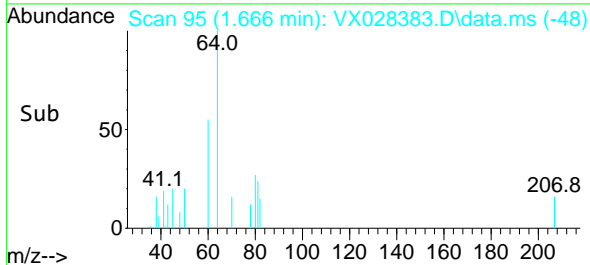
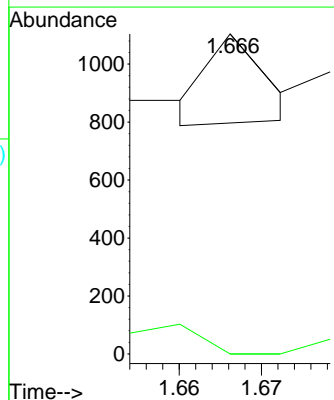
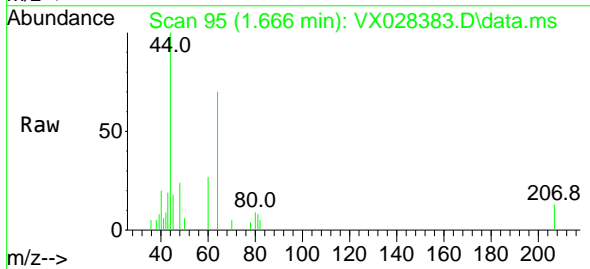
Instrument :  
 MSVOA\_X  
 ClientSampleId :  
 MH-14D

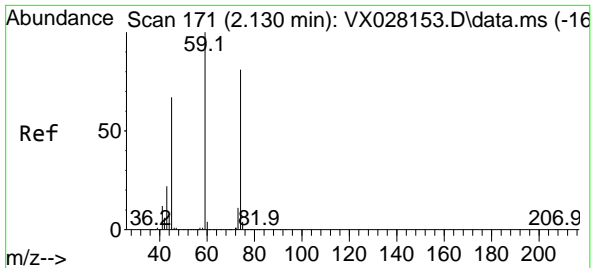
Tgt Ion: 94 Resp: 708  
 Ion Ratio Lower Upper  
 94 100  
 96 85.4 75.3 112.9



#6  
 Chloroethane  
 Concen: Below Cal  
 RT: 1.666 min Scan# 95  
 Delta R.T. -0.012 min  
 Lab File: VX028383.D  
 Acq: 27 Apr 2022 17:06

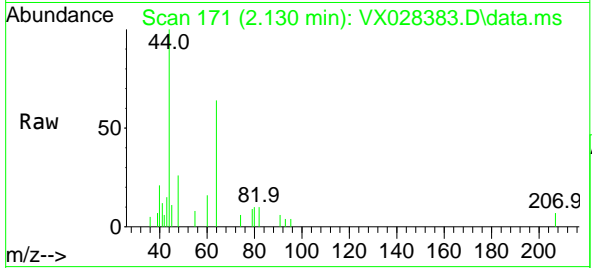
Tgt Ion: 64 Resp: 151  
 Ion Ratio Lower Upper  
 64 100  
 66 0.0 25.3 37.9#



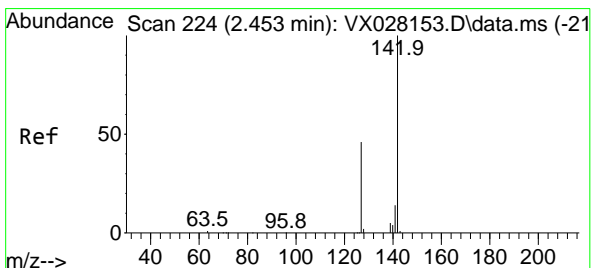
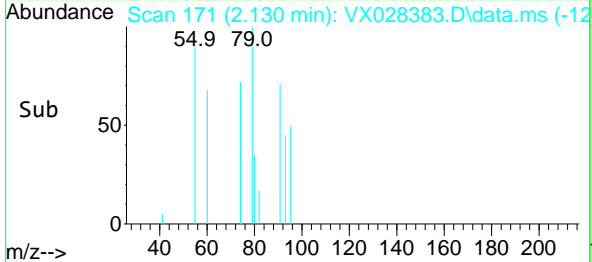
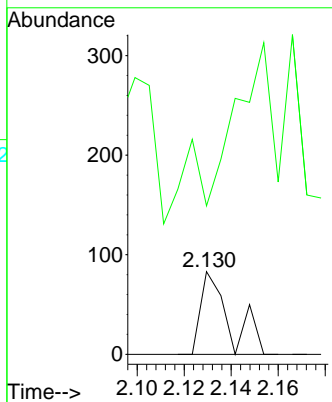


#8  
 Diethyl Ether  
 Concen: Below Cal  
 RT: 2.130 min Scan# 11  
 Delta R.T. -0.000 min  
 Lab File: VX028383.D  
 Acq: 27 Apr 2022 17:06

Instrument : MSVOA\_X  
 ClientSampleId : MH-14D

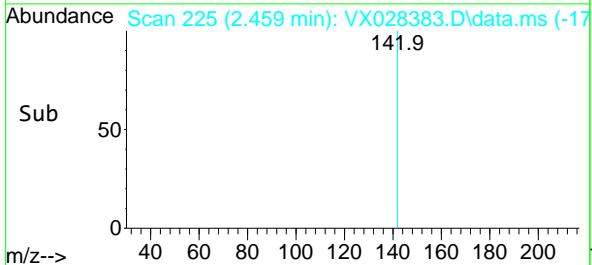
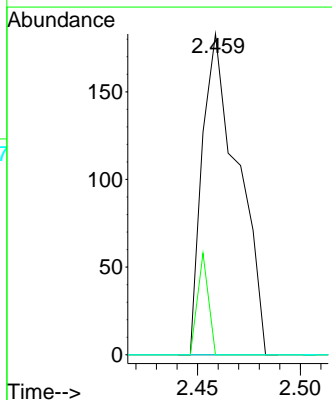
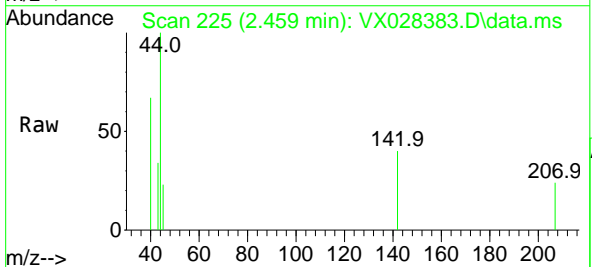


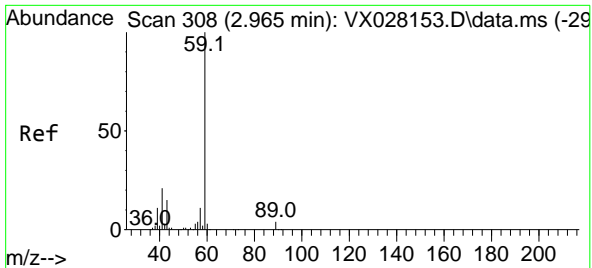
Tgt Ion: 74 Resp: 70  
 Ion Ratio Lower Upper  
 74 100  
 45 0.0 42.0 126.0#



#10  
 Methyl Iodide  
 Concen: 5.276 ug/l  
 RT: 2.459 min Scan# 225  
 Delta R.T. 0.006 min  
 Lab File: VX028383.D  
 Acq: 27 Apr 2022 17:06

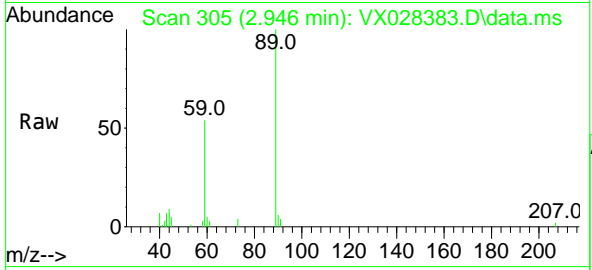
Tgt Ion: 142 Resp: 221  
 Ion Ratio Lower Upper  
 142 100  
 127 9.5 33.9 50.9#  
 141 0.0 11.4 17.2#



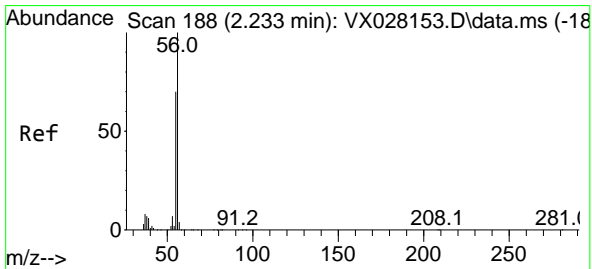
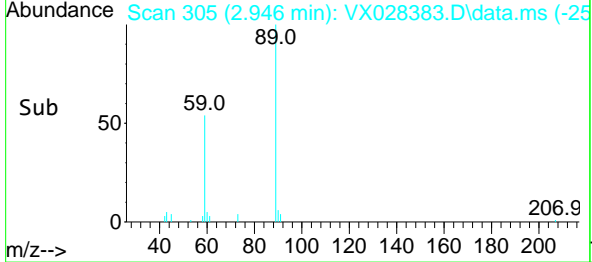
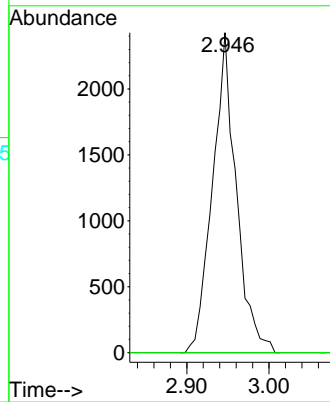


#11  
 Tert butyl alcohol  
 Concen: Below Cal  
 RT: 2.946 min Scan# 305  
 Delta R.T. -0.019 min  
 Lab File: VX028383.D  
 Acq: 27 Apr 2022 17:06

Instrument : MSVOA\_X  
 ClientSampleId : MH-14D

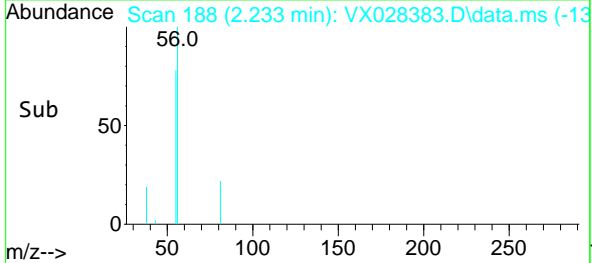
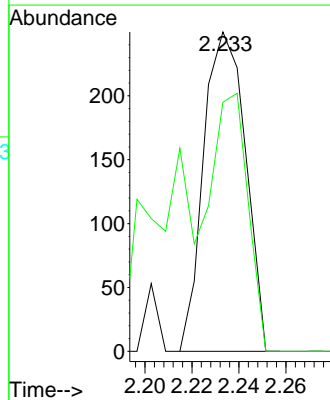
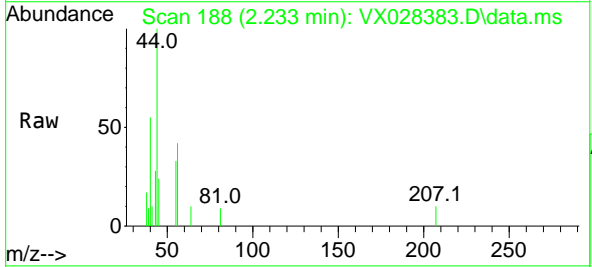


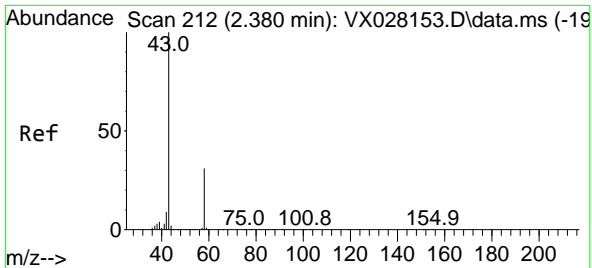
Tgt Ion: 59 Resp: 4870  
 Ion Ratio Lower Upper  
 59 100  
 57 0.0 8.3 12.5#



#13  
 Acrolein  
 Concen: 0.448 ug/l  
 RT: 2.233 min Scan# 188  
 Delta R.T. 0.000 min  
 Lab File: VX028383.D  
 Acq: 27 Apr 2022 17:06

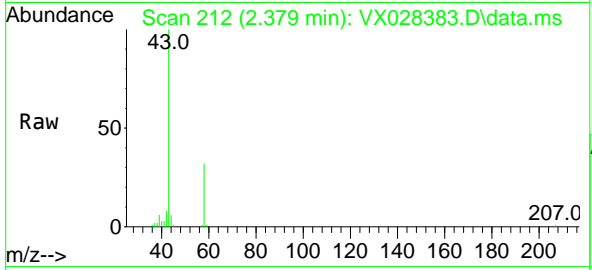
Tgt Ion: 56 Resp: 310  
 Ion Ratio Lower Upper  
 56 100  
 55 71.3 55.0 82.6



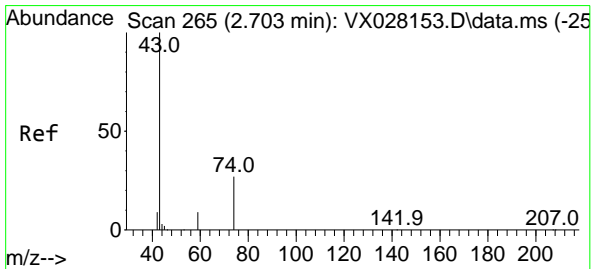
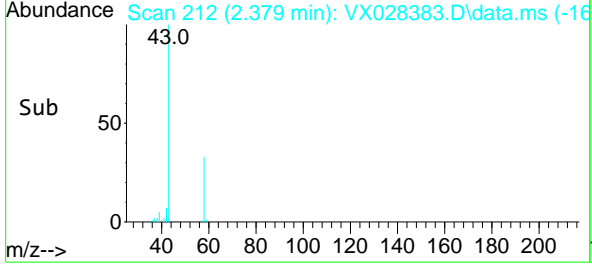
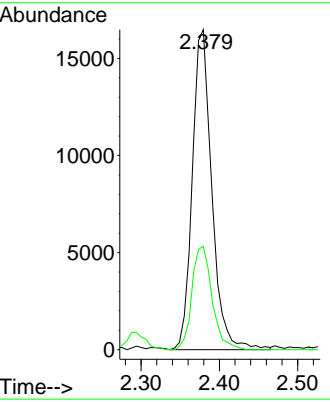


#16  
 Acetone  
 Concen: 15.238 ug/l  
 RT: 2.379 min Scan# 212  
 Delta R.T. -0.001 min  
 Lab File: VX028383.D  
 Acq: 27 Apr 2022 17:06

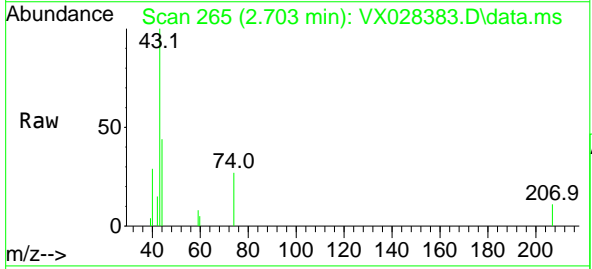
Instrument : MSVOA\_X  
 ClientSampleId : MH-14D



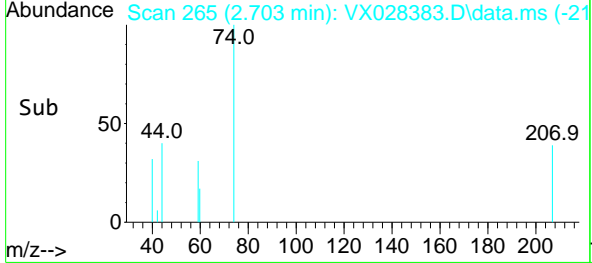
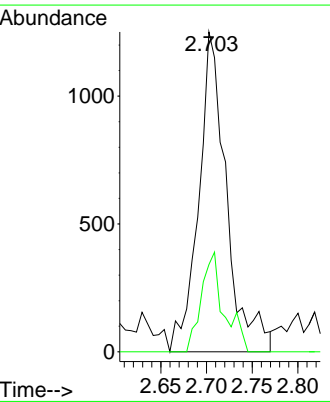
Tgt Ion: 43 Resp: 28517  
 Ion Ratio Lower Upper  
 43 100  
 58 32.3 28.8 43.2

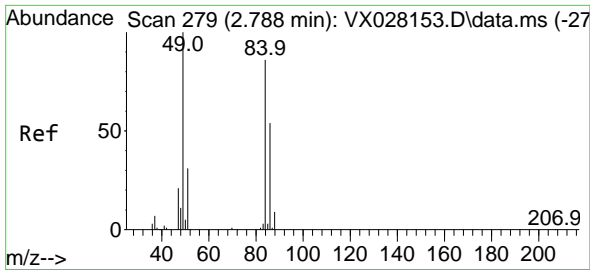


#18  
 Methyl Acetate  
 Concen: 0.529 ug/l  
 RT: 2.703 min Scan# 265  
 Delta R.T. -0.000 min  
 Lab File: VX028383.D  
 Acq: 27 Apr 2022 17:06



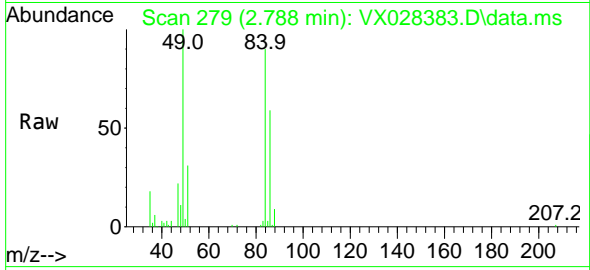
Tgt Ion: 43 Resp: 2655  
 Ion Ratio Lower Upper  
 43 100  
 74 25.2 22.8 34.2





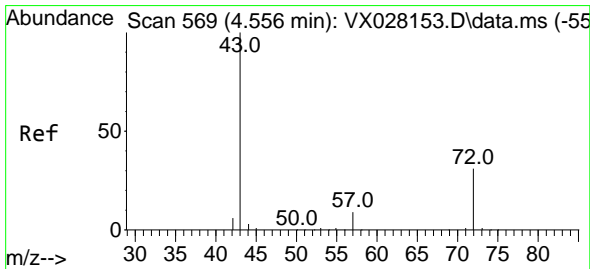
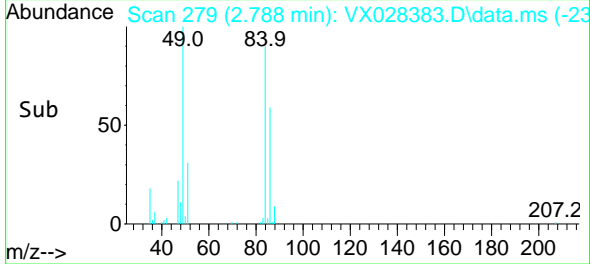
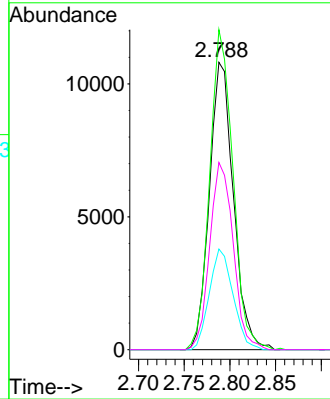
#20  
 Methylene Chloride  
 Concen: 4.726 ug/l  
 RT: 2.788 min Scan# 21  
 Delta R.T. -0.000 min  
 Lab File: VX028383.D  
 Acq: 27 Apr 2022 17:06

Instrument :  
 MSVOA\_X  
 ClientSampleId :  
 MH-14D



Tgt Ion: 84 Resp: 19783

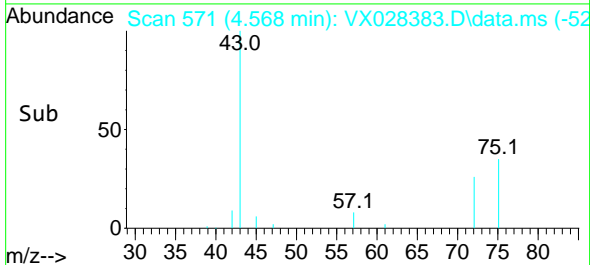
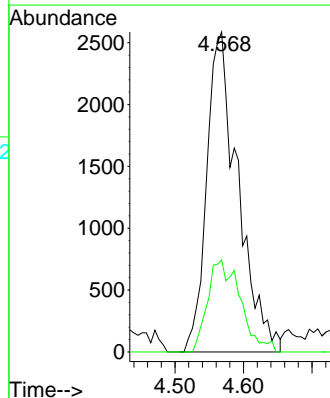
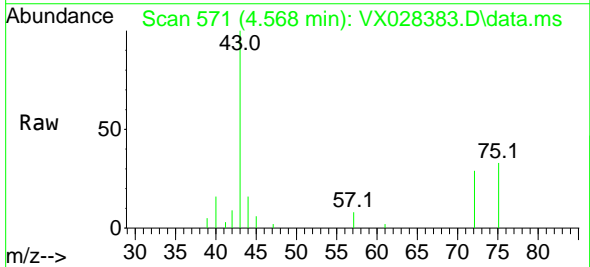
Ion	Ratio	Lower	Upper
84	100		
49	111.4	85.5	128.3
51	35.0	26.6	39.8
86	65.2	51.5	77.3



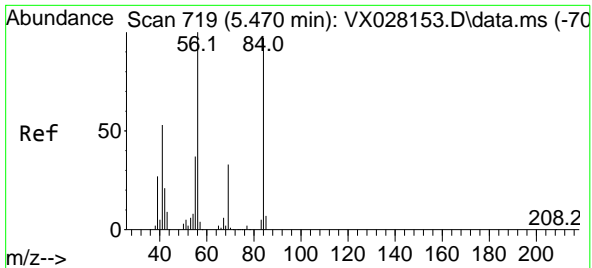
#25  
 2-Butanone  
 Concen: 2.455 ug/l  
 RT: 4.568 min Scan# 571  
 Delta R.T. 0.012 min  
 Lab File: VX028383.D  
 Acq: 27 Apr 2022 17:06

Tgt Ion: 43 Resp: 8203

Ion	Ratio	Lower	Upper
43	100		
72	28.8	24.4	36.6





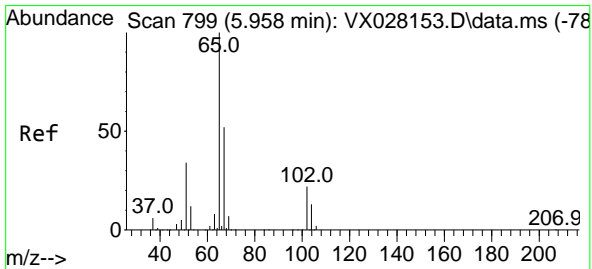
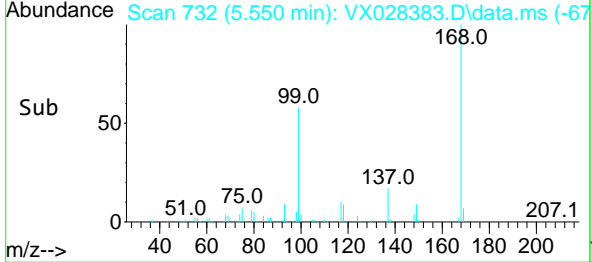
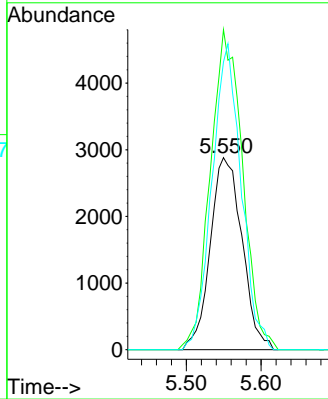
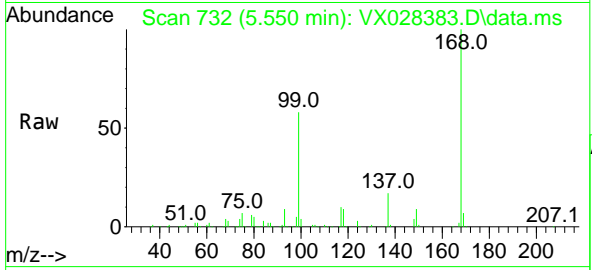


#31  
 Cyclohexane  
 Concen: 1.239 ug/l  
 RT: 5.550 min Scan# 719  
 Delta R.T. 0.080 min  
 Lab File: VX028383.D  
 Acq: 27 Apr 2022 17:06

Instrument : MSVOA\_X  
 ClientSampleId : MH-14D

Tgt Ion: 56 Resp: 8514

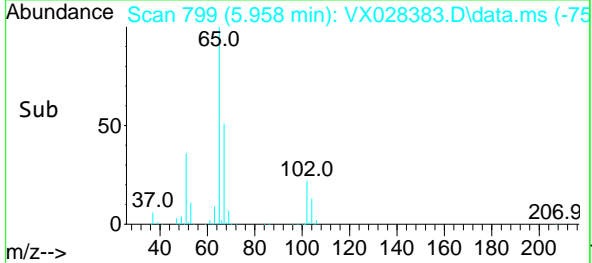
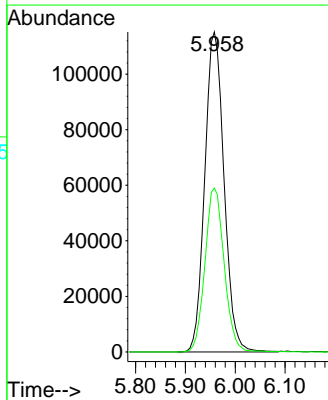
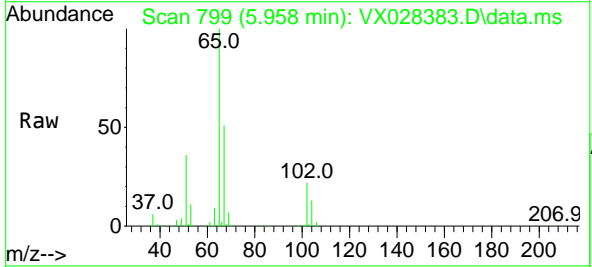
Ion	Ratio	Lower	Upper
56	100		
69	166.6	26.7	40.1#
84	149.8	77.2	115.8#

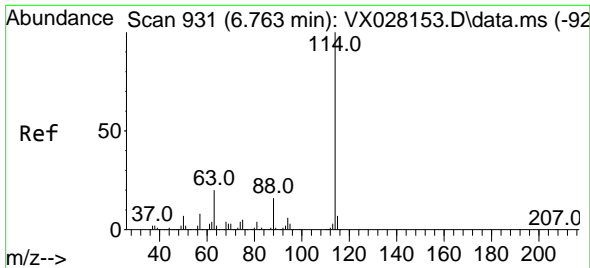


#33  
 1,2-Dichloroethane-d4  
 Concen: 54.804 ug/l  
 RT: 5.958 min Scan# 799  
 Delta R.T. 0.000 min  
 Lab File: VX028383.D  
 Acq: 27 Apr 2022 17:06

Tgt Ion: 65 Resp: 309202

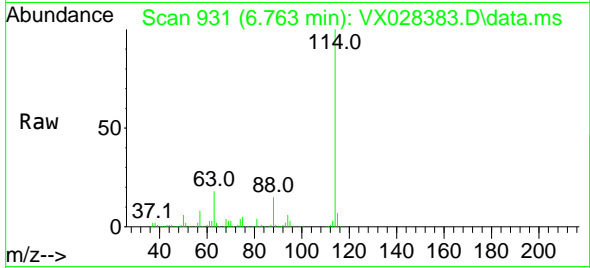
Ion	Ratio	Lower	Upper
65	100		
67	51.2	0.0	107.4





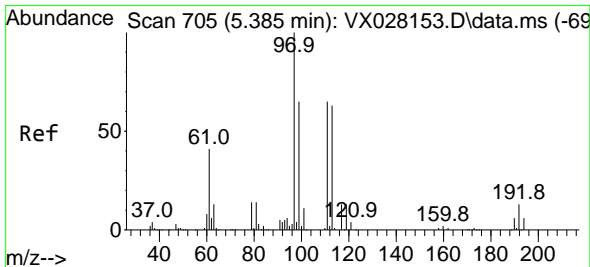
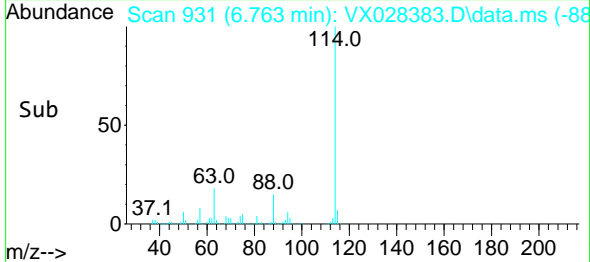
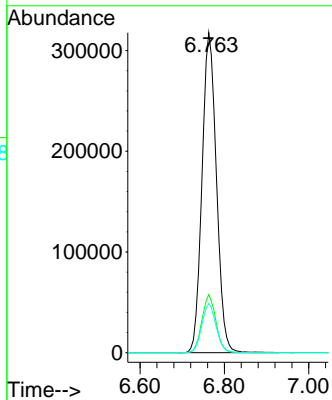
#34  
 1,4-Difluorobenzene  
 Concen: 50.000 ug/l  
 RT: 6.763 min Scan# 91  
 Delta R.T. -0.000 min  
 Lab File: VX028383.D  
 Acq: 27 Apr 2022 17:06

Instrument : MSVOA\_X  
 ClientSampleId : MH-14D



Tgt Ion:114 Resp: 756744

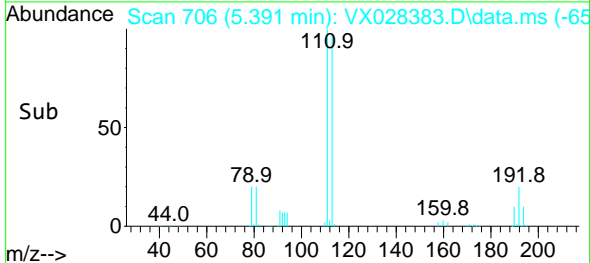
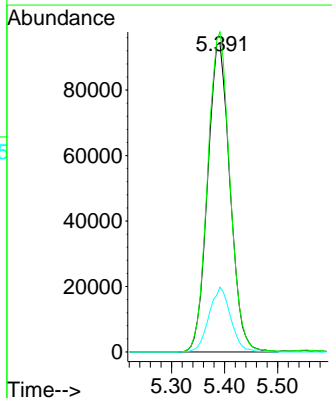
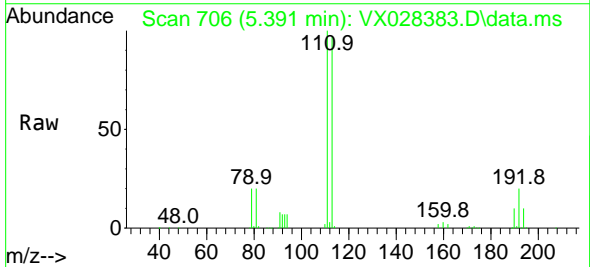
Ion	Ratio	Lower	Upper
114	100		
63	18.2	0.0	36.8
88	15.4	0.0	32.4

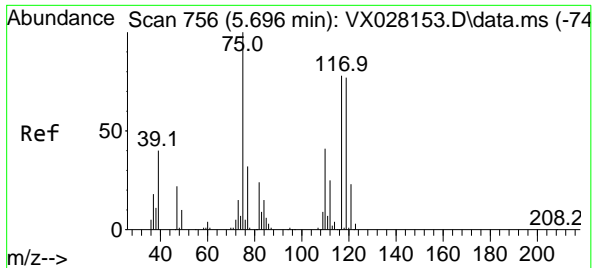


#35  
 Dibromofluoromethane  
 Concen: 52.115 ug/l  
 RT: 5.391 min Scan# 706  
 Delta R.T. 0.006 min  
 Lab File: VX028383.D  
 Acq: 27 Apr 2022 17:06

Tgt Ion:113 Resp: 276572

Ion	Ratio	Lower	Upper
113	100		
111	103.0	82.8	124.2
192	20.3	16.9	25.3



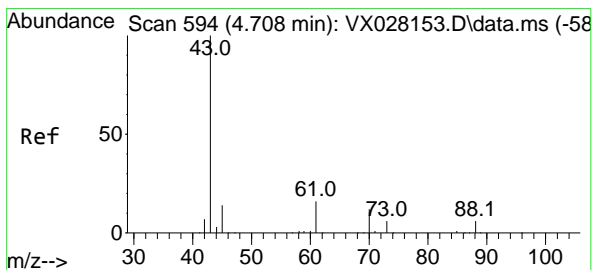
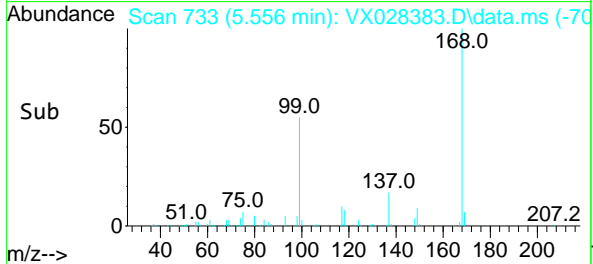
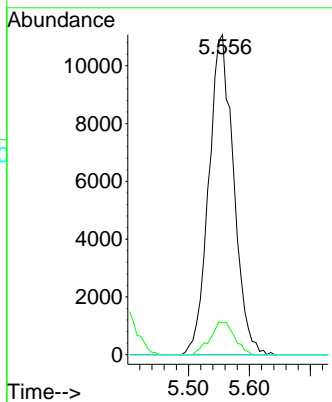
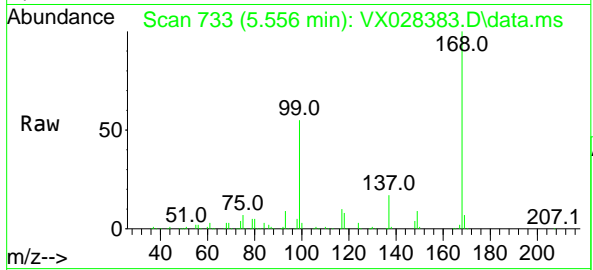


#36  
 1,1-Dichloropropene  
 Concen: 4.524 ug/l  
 RT: 5.556 min Scan# 711  
 Delta R.T. -0.140 min  
 Lab File: VX028383.D  
 Acq: 27 Apr 2022 17:06

Instrument : MSVOA\_X  
 ClientSampleId : MH-14D

Tgt Ion: 75 Resp: 31317

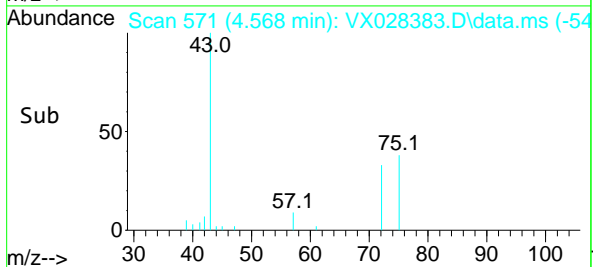
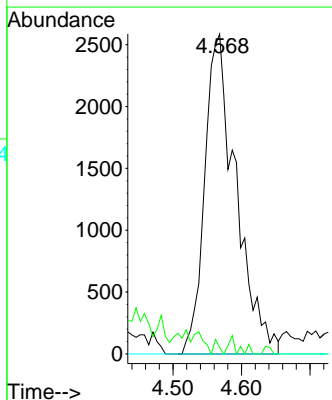
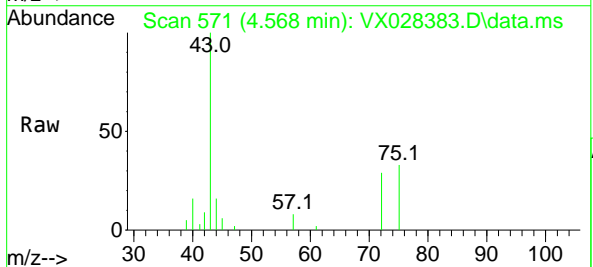
Ion	Ratio	Lower	Upper
75	100		
110	10.0	18.3	54.8#
77	0.0	24.8	37.2#

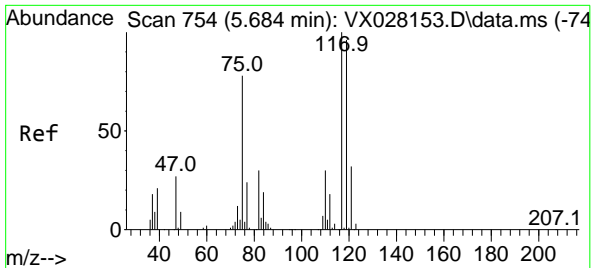


#37  
 Ethyl Acetate  
 Concen: 1.168 ug/l  
 RT: 4.568 min Scan# 571  
 Delta R.T. -0.140 min  
 Lab File: VX028383.D  
 Acq: 27 Apr 2022 17:06

Tgt Ion: 43 Resp: 8203

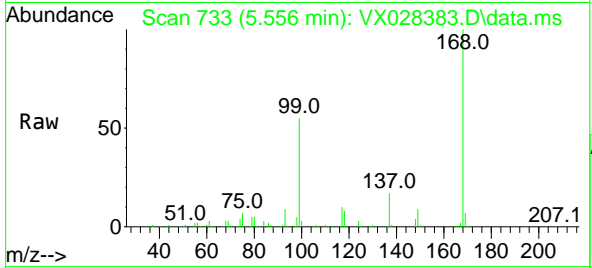
Ion	Ratio	Lower	Upper
43	100		
61	0.8	12.6	19.0#
70	0.0	10.2	15.2#



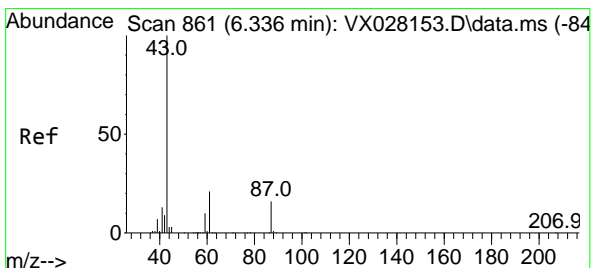
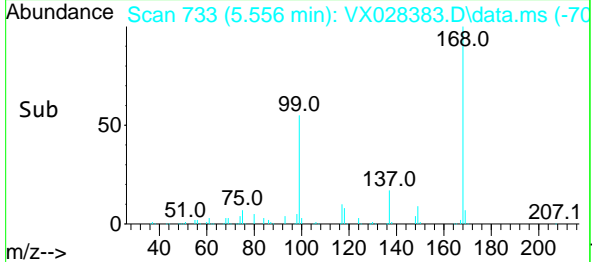
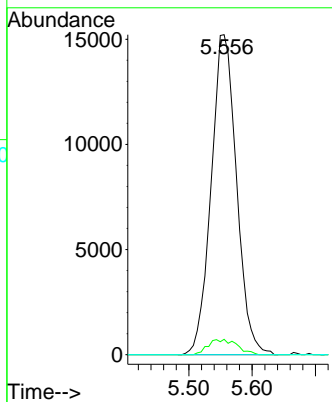


#38  
 Carbon Tetrachloride  
 Concen: 5.419 ug/l  
 RT: 5.556 min Scan# 711  
 Delta R.T. -0.128 min  
 Lab File: VX028383.D  
 Acq: 27 Apr 2022 17:06

Instrument : MSVOA\_X  
 ClientSampleId : MH-14D

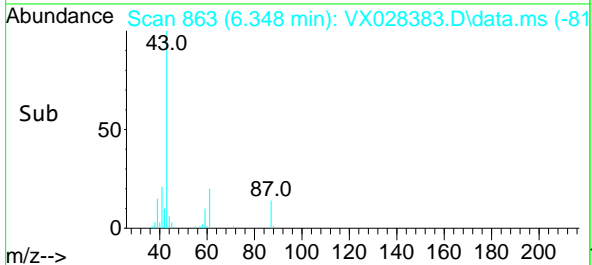
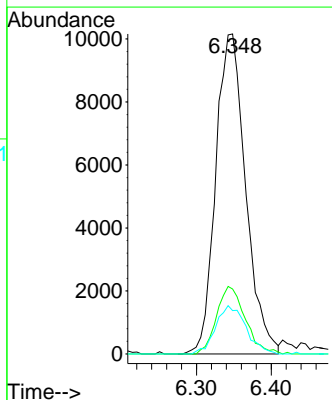
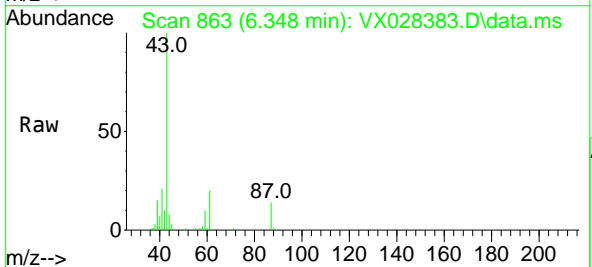


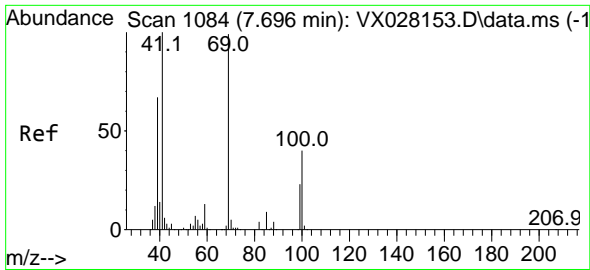
Tgt Ion: 117 Resp: 42347  
 Ion Ratio Lower Upper  
 117 100  
 119 4.8 77.3 115.9#  
 121 0.0 24.2 36.2#



#43  
 Isopropyl Acetate  
 Concen: 2.476 ug/l  
 RT: 6.348 min Scan# 863  
 Delta R.T. 0.012 min  
 Lab File: VX028383.D  
 Acq: 27 Apr 2022 17:06

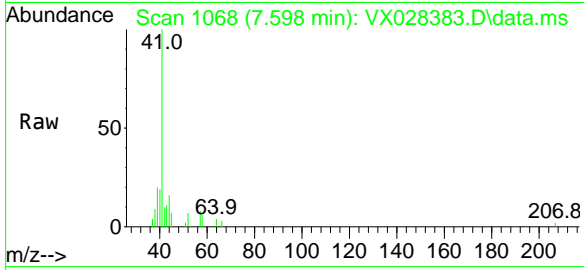
Tgt Ion: 43 Resp: 28300  
 Ion Ratio Lower Upper  
 43 100  
 61 20.2 18.5 27.7  
 87 15.3 13.0 19.6



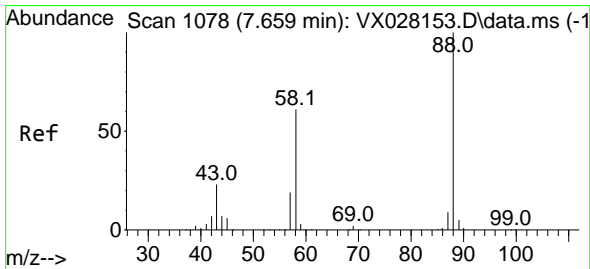
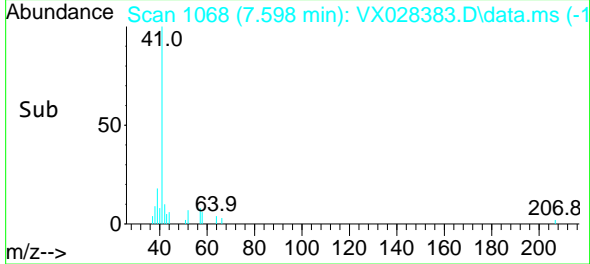
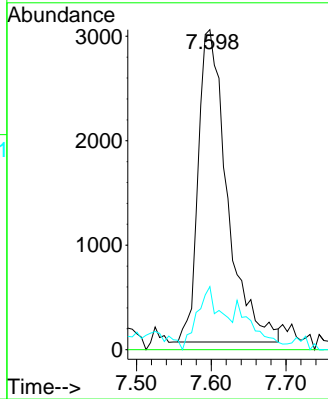


#48  
 Methyl methacrylate  
 Concen: 1.534 ug/l  
 RT: 7.598 min Scan# 1084  
 Delta R.T. -0.098 min  
 Lab File: VX028383.D  
 Acq: 27 Apr 2022 17:06

Instrument : MSVOA\_X  
 ClientSampleId : MH-14D

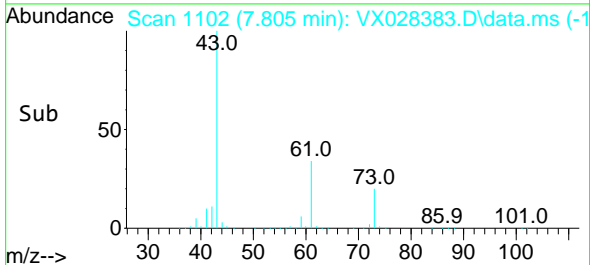
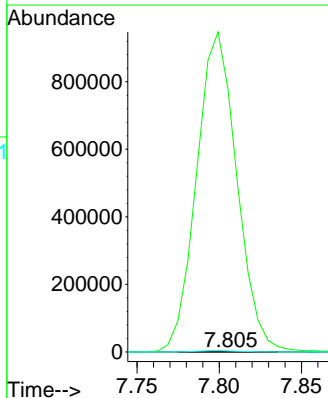
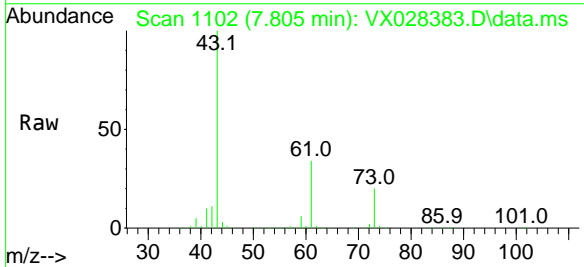


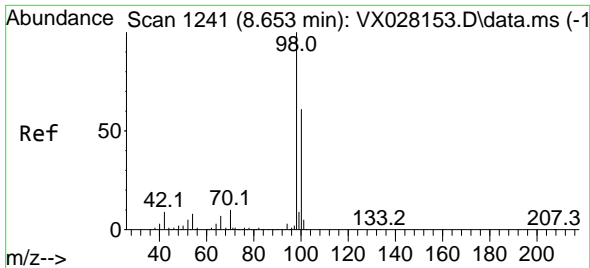
Tgt Ion: 41 Resp: 8051  
 Ion Ratio Lower Upper  
 41 100  
 69 0.0 82.5 123.7#  
 39 0.0 43.8 65.8#



#49  
 1,4-Dioxane  
 Concen: 2.044 ug/l  
 RT: 7.805 min Scan# 1102  
 Delta R.T. 0.146 min  
 Lab File: VX028383.D  
 Acq: 27 Apr 2022 17:06

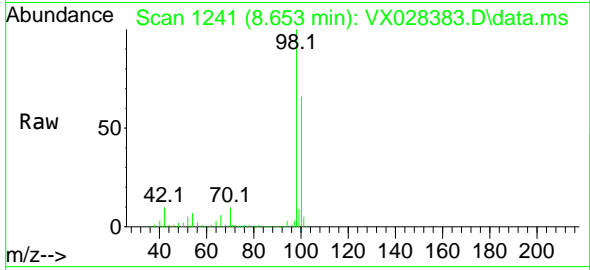
Tgt Ion: 88 Resp: 287  
 Ion Ratio Lower Upper  
 88 100  
 43 565775.6 21.9 32.9#  
 58 2643.6 53.7 80.5#



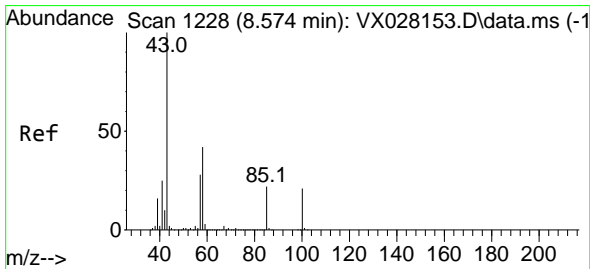
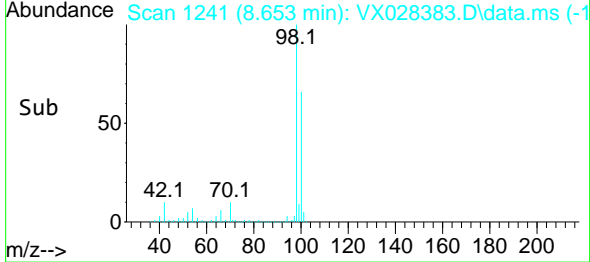
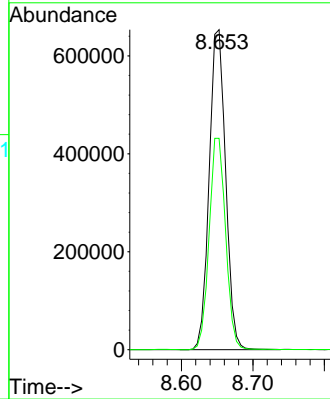


#50  
 Toluene-d8  
 Concen: 51.258 ug/l  
 RT: 8.653 min Scan# 11  
 Delta R.T. -0.000 min  
 Lab File: VX028383.D  
 Acq: 27 Apr 2022 17:06

Instrument :  
 MSVOA\_X  
 ClientSampleId :  
 MH-14D

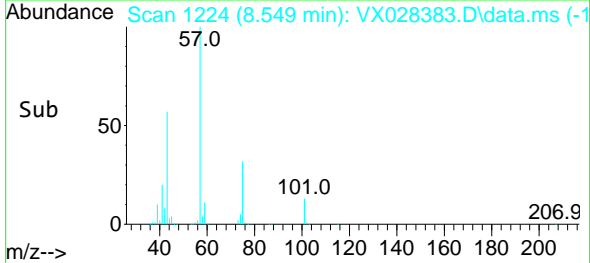
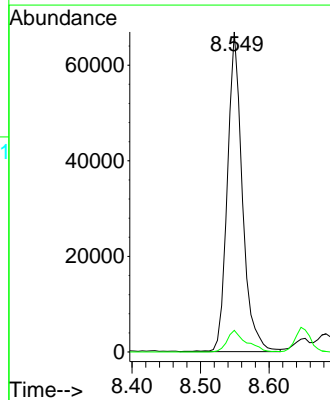
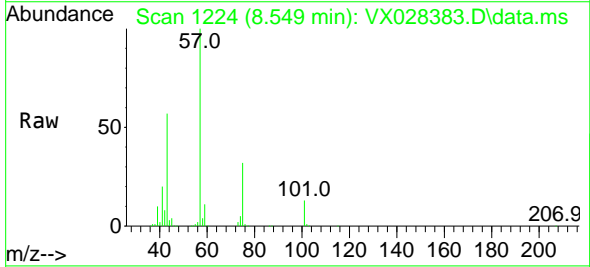


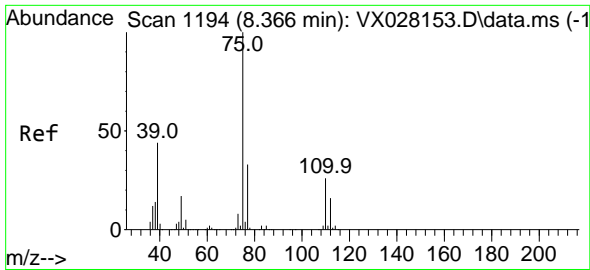
Tgt Ion: 98 Resp: 1044799  
 Ion Ratio Lower Upper  
 98 100  
 100 66.2 52.6 78.8



#51  
 4-Methyl-2-Pentanone  
 Concen: 13.785 ug/l  
 RT: 8.549 min Scan# 1224  
 Delta R.T. -0.025 min  
 Lab File: VX028383.D  
 Acq: 27 Apr 2022 17:06

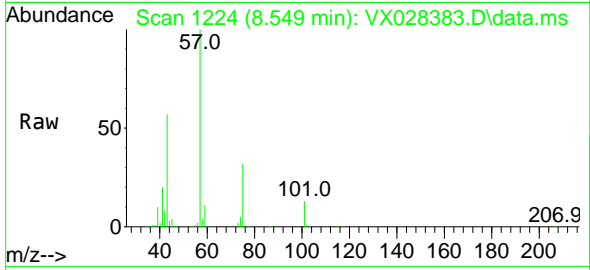
Tgt Ion: 43 Resp: 101129  
 Ion Ratio Lower Upper  
 43 100  
 58 8.7 36.1 54.1#



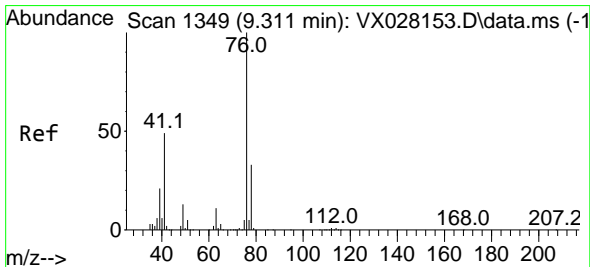
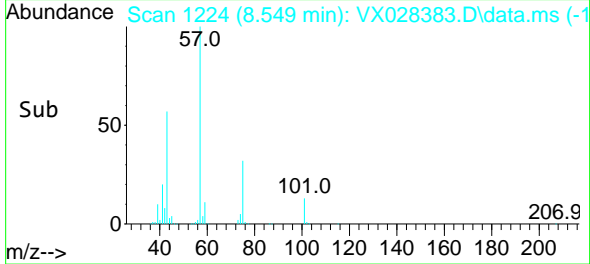
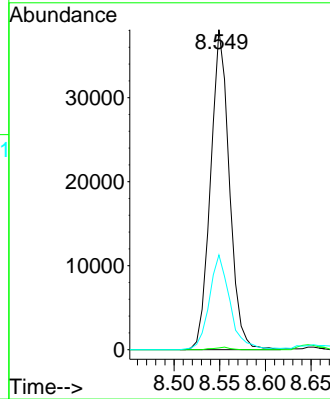


#54  
 cis-1,3-Dichloropropene  
 Concen: 6.380 ug/l  
 RT: 8.549 min Scan# 1194  
 Delta R.T. 0.183 min  
 Lab File: VX028383.D  
 Acq: 27 Apr 2022 17:06

Instrument : MSVOA\_X  
 ClientSampleId : MH-14D

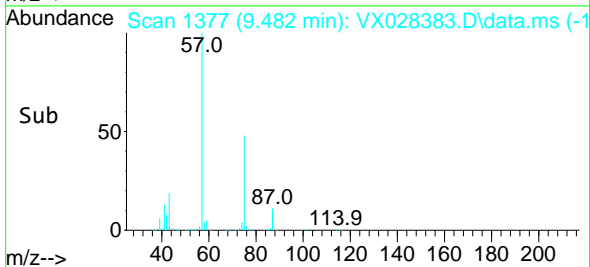
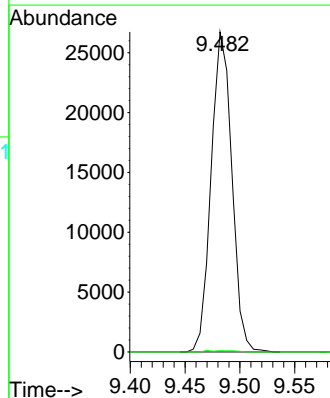
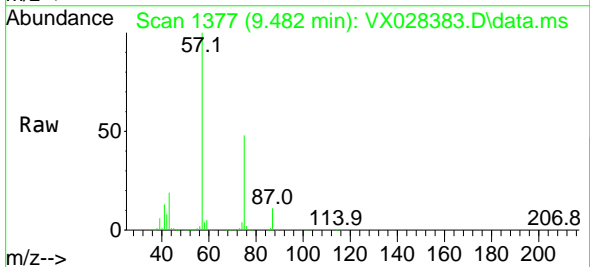


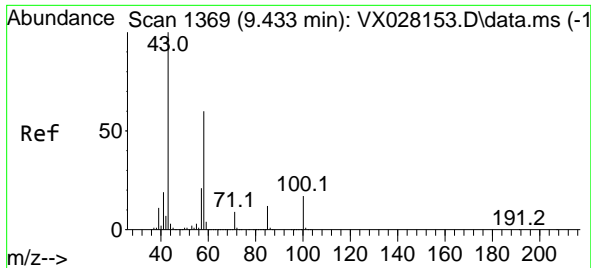
Tgt Ion: 75 Resp: 54452  
 Ion Ratio Lower Upper  
 75 100  
 77 0.6 24.8 37.2#  
 39 29.6 29.6 44.4#



#57  
 1,3-Dichloropropane  
 Concen: 3.807 ug/l  
 RT: 9.482 min Scan# 1377  
 Delta R.T. 0.171 min  
 Lab File: VX028383.D  
 Acq: 27 Apr 2022 17:06

Tgt Ion: 76 Resp: 35148  
 Ion Ratio Lower Upper  
 76 100  
 78 0.6 25.8 38.8#

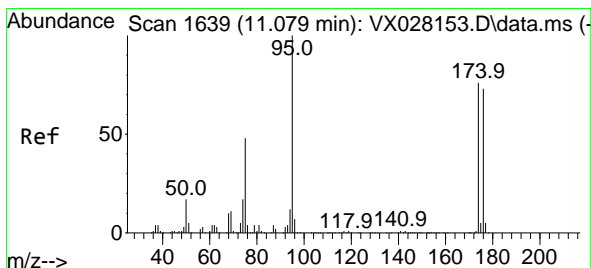
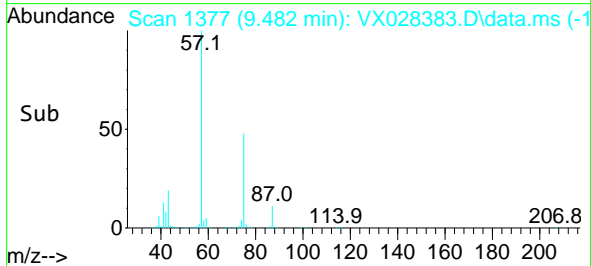
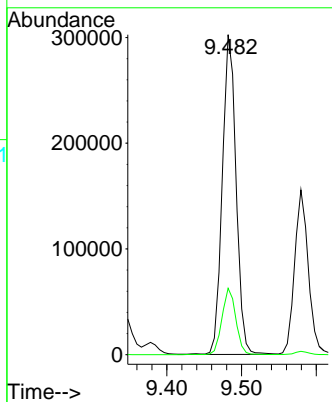
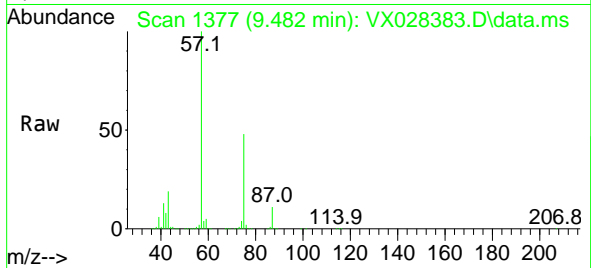




#59  
 2-Hexanone  
 Concen: 68.489 ug/l  
 RT: 9.482 min Scan# 11  
 Delta R.T. 0.049 min  
 Lab File: VX028383.D  
 Acq: 27 Apr 2022 17:06

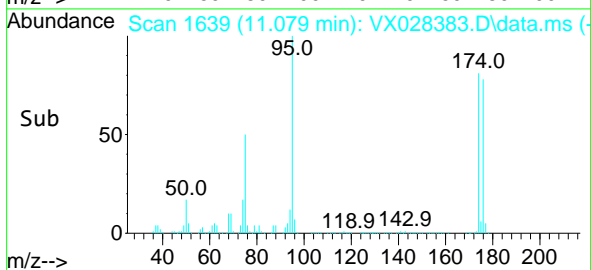
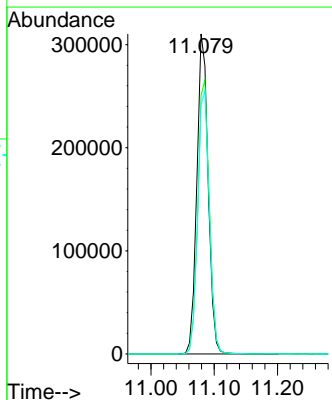
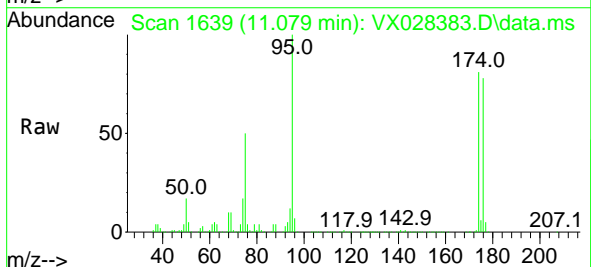
Instrument :  
 MSVOA\_X  
 ClientSampleId :  
 MH-14D

Tgt Ion: 43 Resp: 389191  
 Ion Ratio Lower Upper  
 43 100  
 58 20.7 31.9 95.7#

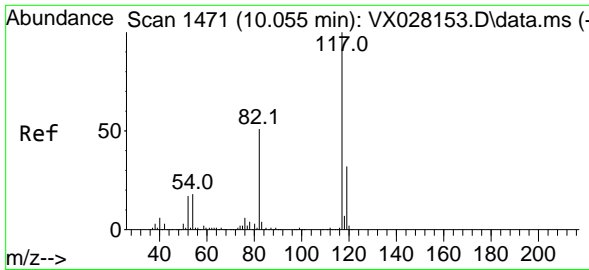


#62  
 4-Bromofluorobenzene  
 Concen: 49.595 ug/l  
 RT: 11.079 min Scan# 1639  
 Delta R.T. 0.000 min  
 Lab File: VX028383.D  
 Acq: 27 Apr 2022 17:06

Tgt Ion: 95 Resp: 386524  
 Ion Ratio Lower Upper  
 95 100  
 174 87.8 0.0 163.0  
 176 84.2 0.0 155.0

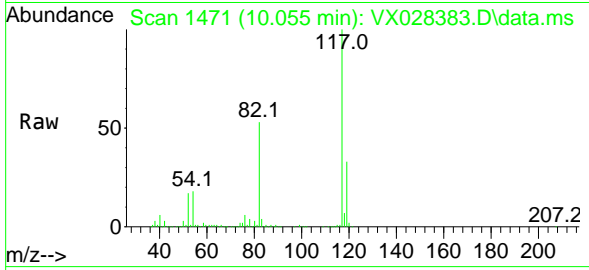






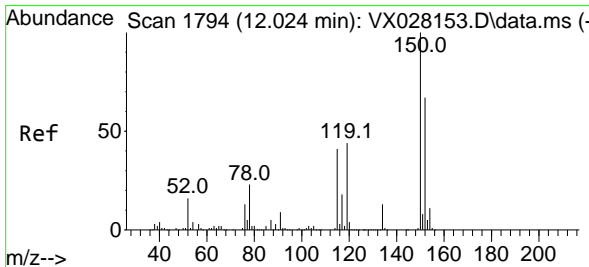
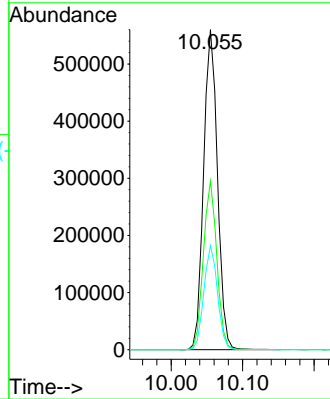
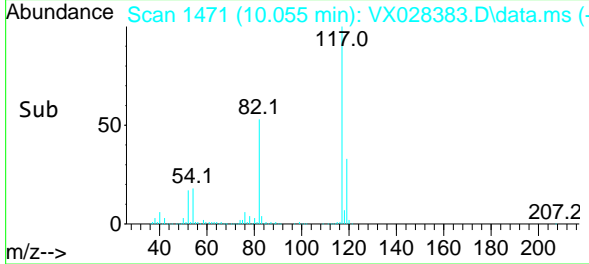
#63  
 Chlorobenzene-d5  
 Concen: 50.000 ug/l  
 RT: 10.055 min Scan# 1471  
 Delta R.T. -0.000 min  
 Lab File: VX028383.D  
 Acq: 27 Apr 2022 17:06

Instrument : MSVOA\_X  
 ClientSampleId : MH-14D

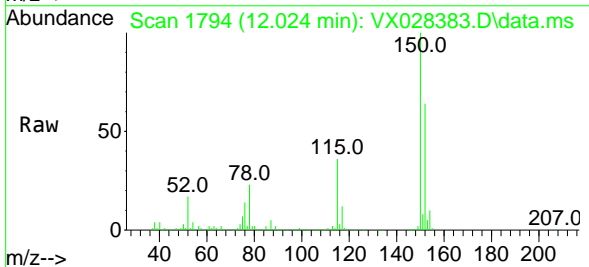


Tgt Ion:117 Resp: 753861

Ion	Ratio	Lower	Upper
117	100		
82	52.7	41.8	62.8
119	32.6	24.8	37.2

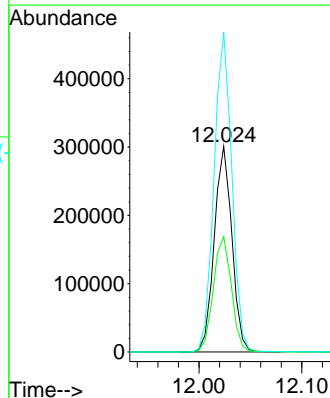
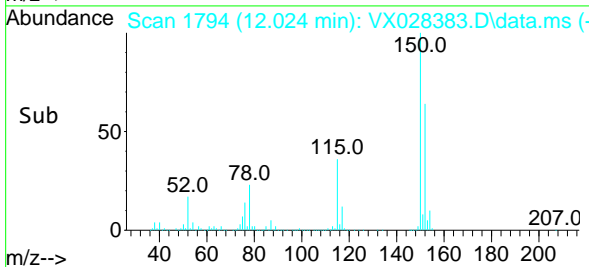


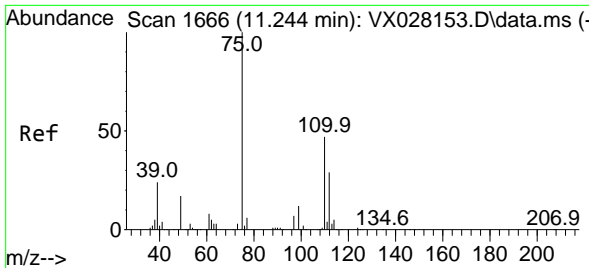
#72  
 1,4-Dichlorobenzene-d4  
 Concen: 50.000 ug/l  
 RT: 12.024 min Scan# 1794  
 Delta R.T. 0.000 min  
 Lab File: VX028383.D  
 Acq: 27 Apr 2022 17:06



Tgt Ion:152 Resp: 358283

Ion	Ratio	Lower	Upper
152	100		
115	57.5	37.5	112.7
150	156.9	0.0	338.2

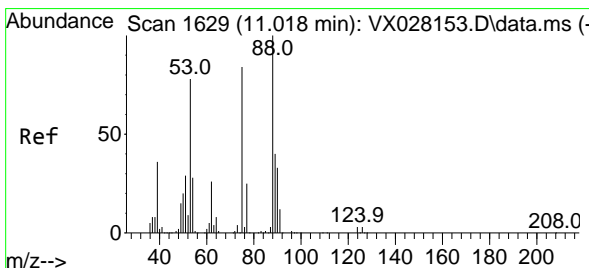
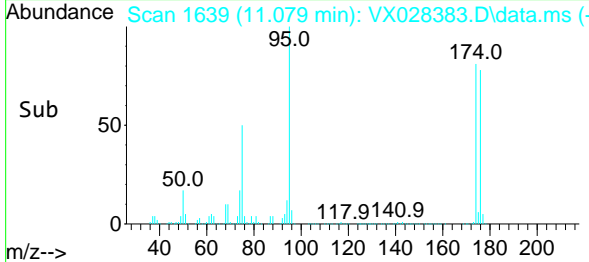
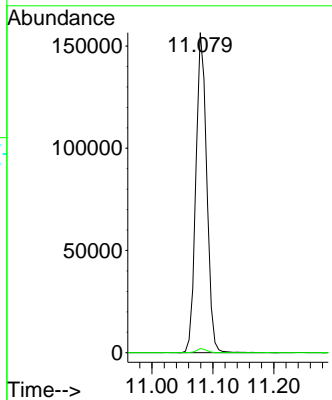
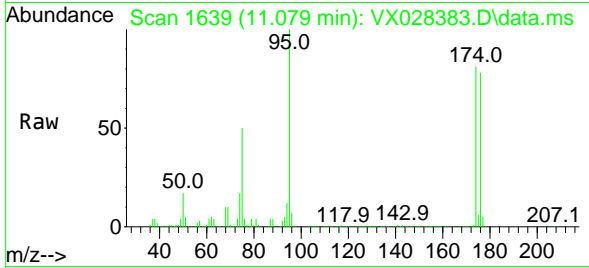




#76  
 1,2,3-Trichloropropane  
 Concen: 27.472 ug/l  
 RT: 11.079 min Scan# 1639  
 Delta R.T. -0.165 min  
 Lab File: VX028383.D  
 Acq: 27 Apr 2022 17:06

Instrument :  
 MSVOA\_X  
 ClientSampleId :  
 MH-14D

Tgt Ion: 75 Resp: 193714  
 Ion Ratio Lower Upper  
 75 100  
 77 1.2 19.4 58.2#



#81  
 trans-1,4-Dichloro-2-butene  
 Concen: 81.640 ug/l  
 RT: 11.079 min Scan# 1639  
 Delta R.T. 0.061 min  
 Lab File: VX028383.D  
 Acq: 27 Apr 2022 17:06

Tgt Ion: 75 Resp: 193714  
 Ion Ratio Lower Upper  
 75 100  
 53 0.0 69.0 103.4#  
 89 0.0 37.0 55.6#

