

Data Path : Z:\voasrv\HPCHEM1\MSVOA_X\Data\VX042723\
 Data File : VX035351.D
 Acq On : 27 Apr 2023 19:03
 Operator : JC/MD
 Sample : 02494-01 20X
 Misc : 5.0mL/MSVOA_X/WATER
 ALS Vial : 26 Sample Multiplier: 1

Instrument :
 MSVOA_X
 ClientSampleId :
 MW-22

Quant Time: Apr 28 05:09:56 2023
 Quant Method : Z:\voasrv\HPCHEM1\MSVOA_X\Method\82X042523W.M
 Quant Title : SW846 8260
 QLast Update : Tue Apr 25 16:31:40 2023
 Response via : Initial Calibration

Compound	R.T.	QIon	Response	Conc	Units	Dev(Min)

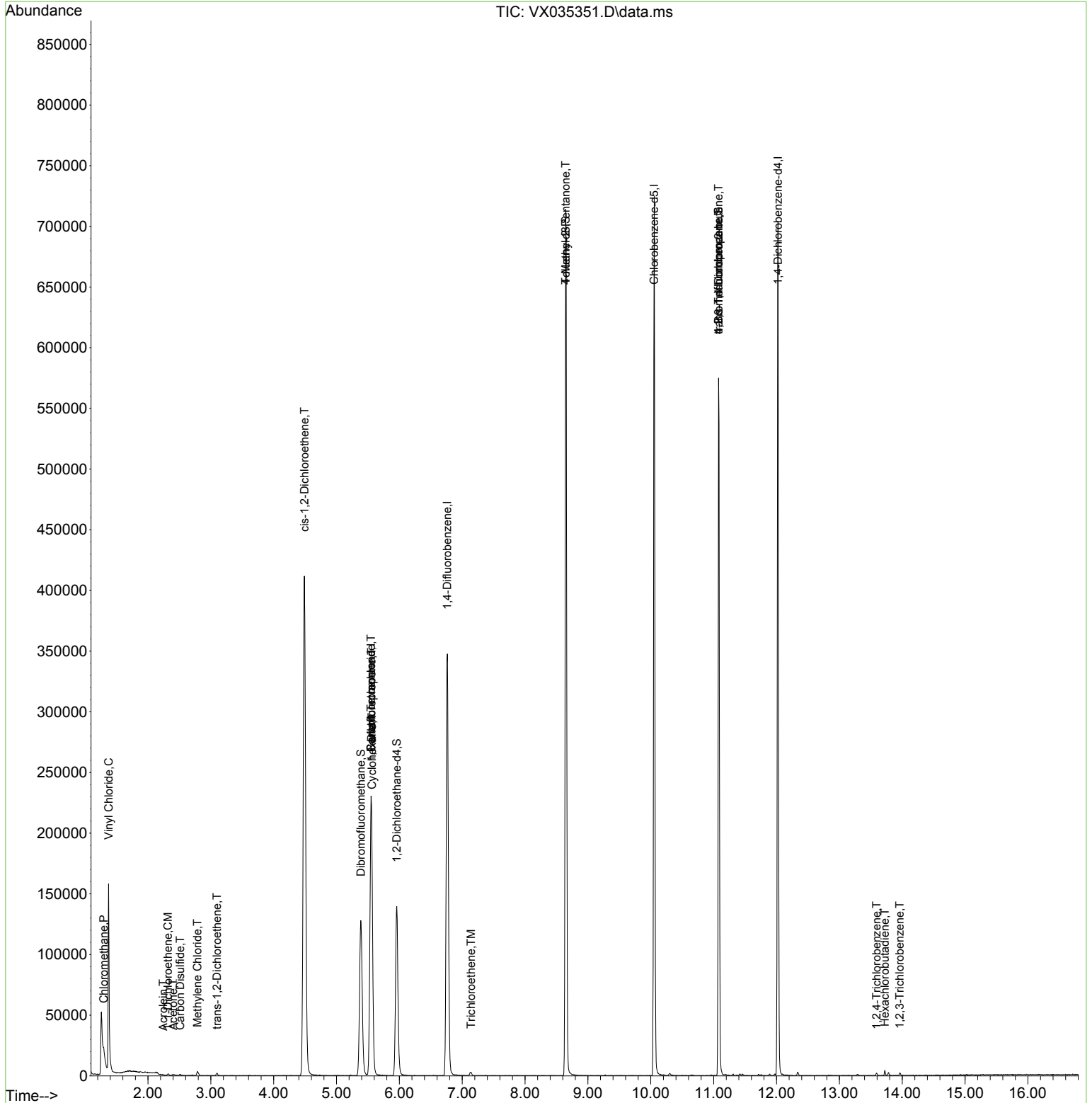
Internal Standards						
1) Pentafluorobenzene	5.549	168	226530	50.000	ug/l	0.00
34) 1,4-Difluorobenzene	6.763	114	369676	50.000	ug/l	0.00
63) Chlorobenzene-d5	10.055	117	335982	50.000	ug/l	0.00
72) 1,4-Dichlorobenzene-d4	12.024	152	156146	50.000	ug/l	0.00
System Monitoring Compounds						
33) 1,2-Dichloroethane-d4	5.958	65	135531	49.591	ug/l	0.00
Spiked Amount	50.000	Range 78 - 117	Recovery	=	99.180%	
35) Dibromofluoromethane	5.385	113	115055	50.708	ug/l	0.00
Spiked Amount	50.000	Range 75 - 124	Recovery	=	101.420%	
50) Toluene-d8	8.646	98	433500	50.647	ug/l	0.00
Spiked Amount	50.000	Range 92 - 112	Recovery	=	101.300%	
62) 4-Bromofluorobenzene	11.079	95	162814	50.566	ug/l	0.00
Spiked Amount	50.000	Range 83 - 123	Recovery	=	101.140%	
Target Compounds						
						Qvalue
3) Chloromethane	1.294	50	1011	0.464	ug/l #	42
4) Vinyl Chloride	1.373	62	103731	47.431	ug/l	99
12) 1,1-Dichloroethene	2.318	96	481	0.219	ug/l	93
13) Acrolein	2.239	56	123	0.251	ug/l #	14
16) Acetone	2.398	43	749	0.631	ug/l #	75
17) Carbon Disulfide	2.513	76	1099	0.208	ug/l #	77
20) Methylene Chloride	2.788	84	1691	0.621	ug/l	86
21) trans-1,2-Dichloroethene	3.099	96	791	0.331	ug/l #	76
27) cis-1,2-Dichloroethene	4.489	96	271581	96.689	ug/l	85
31) Cyclohexane	5.562	56	4191	1.081	ug/l #	1
36) 1,1-Dichloropropene	5.556	75	15870	4.479	ug/l #	52
38) Carbon Tetrachloride	5.549	117	22401	6.660	ug/l #	16
44) Trichloroethene	7.141	130	1265	0.452	ug/l	81
51) 4-Methyl-2-Pentanone	8.646	43	1817	0.544	ug/l #	1
76) 1,2,3-Trichloropropane	11.079	75	78881	25.325	ug/l #	34
81) trans-1,4-Dichloro-2-b...	11.079	75	78881	82.023	ug/l #	8
93) 1,2,4-Trichlorobenzene	13.591	180	718	0.212	ug/l	89
94) Hexachlorobutadiene	13.725	225	650	0.437	ug/l	92
96) 1,2,3-Trichlorobenzene	13.963	180	749	0.219	ug/l	85

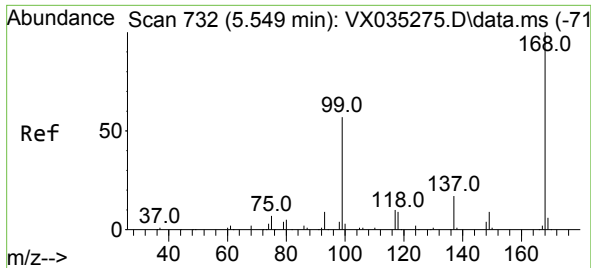
(#) = qualifier out of range (m) = manual integration (+) = signals summed

Data Path : Z:\voasrv\HPCHEM1\MSVOA_X\Data\VX042723\
 Data File : VX035351.D
 Acq On : 27 Apr 2023 19:03
 Operator : JC/MD
 Sample : 02494-01 20X
 Misc : 5.0mL/MSVOA_X/WATER
 ALS Vial : 26 Sample Multiplier: 1

Instrument :
 MSVOA_X
 ClientSampleId :
 MW-22

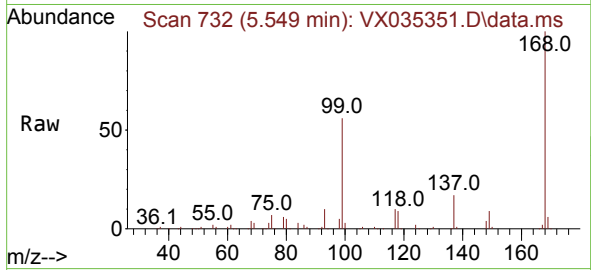
Quant Time: Apr 28 05:09:56 2023
 Quant Method : Z:\voasrv\HPCHEM1\MSVOA_X\Method\82X042523W.M
 Quant Title : SW846 8260
 QLast Update : Tue Apr 25 16:31:40 2023
 Response via : Initial Calibration



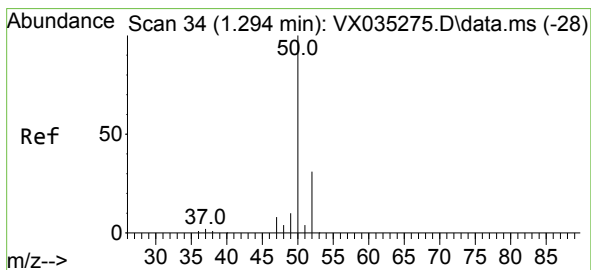
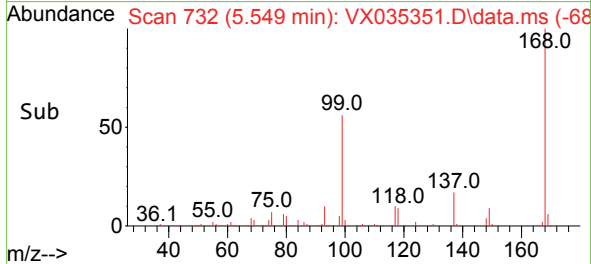
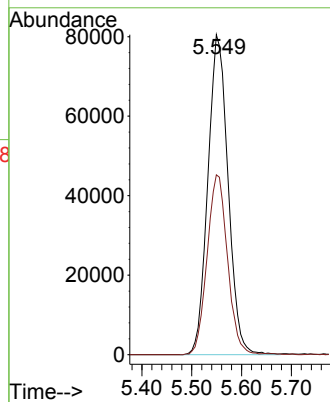


#1
 Pentafluorobenzene
 Concen: 50.000 ug/l
 RT: 5.549 min Scan# 71
 Delta R.T. 0.000 min
 Lab File: VX035351.D
 Acq: 27 Apr 2023 19:03

Instrument :
 MSVOA_X
 ClientSampleId :
 MW-22

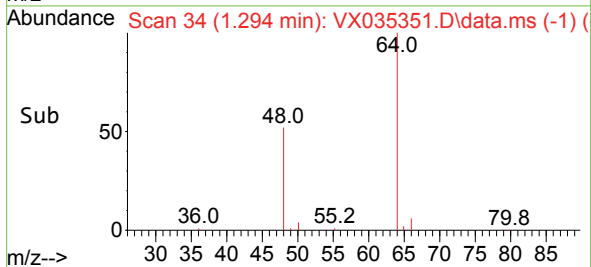
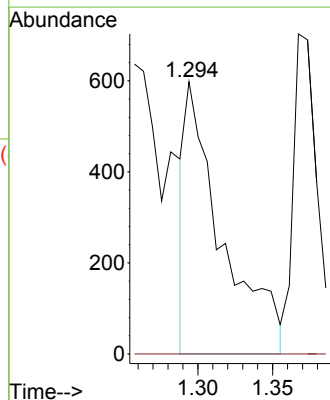
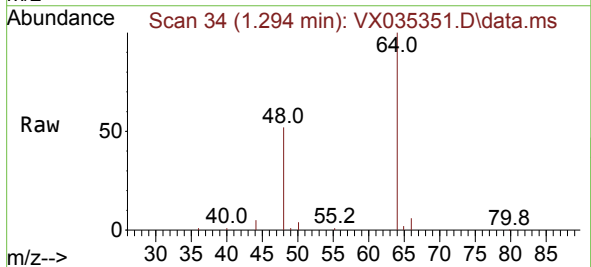


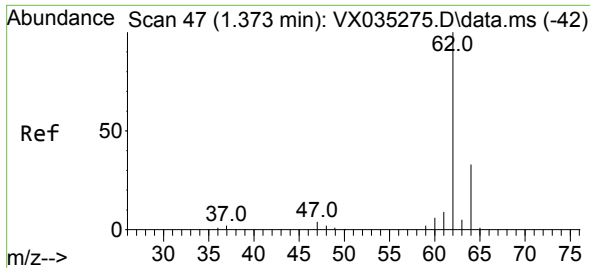
Tgt Ion:168 Resp: 226530
 Ion Ratio Lower Upper
 168 100
 99 56.2 45.7 68.5



#3
 Chloromethane
 Concen: 0.464 ug/l
 RT: 1.294 min Scan# 34
 Delta R.T. 0.000 min
 Lab File: VX035351.D
 Acq: 27 Apr 2023 19:03

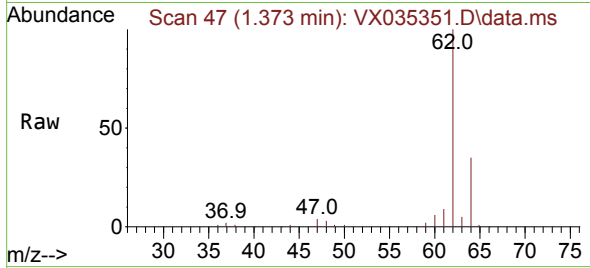
Tgt Ion: 50 Resp: 1011
 Ion Ratio Lower Upper
 50 100
 52 0.0 25.9 38.9#



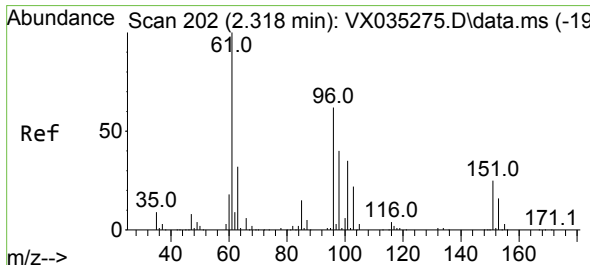
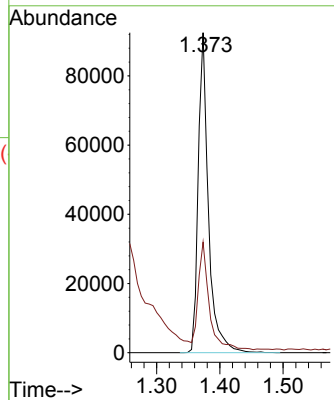
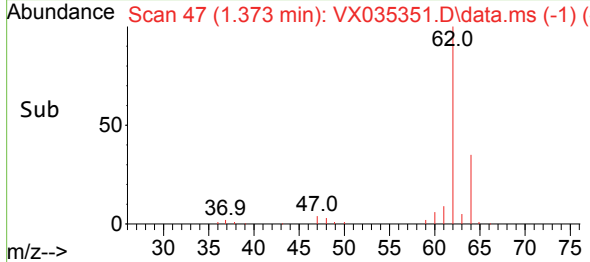


#4
 Vinyl Chloride
 Concen: 47.431 ug/l
 RT: 1.373 min Scan# 41
 Delta R.T. 0.000 min
 Lab File: VX035351.D
 Acq: 27 Apr 2023 19:03

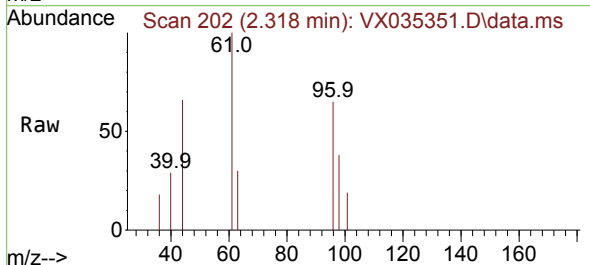
Instrument :
 MSVOA_X
 ClientSampleId :
 MW-22



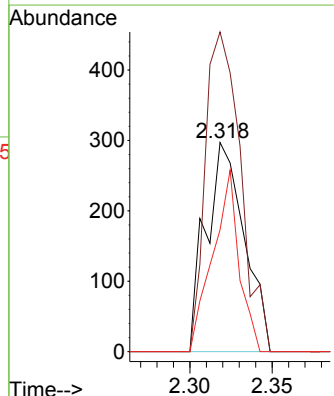
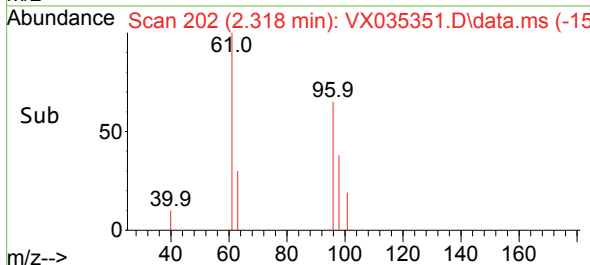
Tgt Ion: 62 Resp: 103731
 Ion Ratio Lower Upper
 62 100
 64 33.5 26.4 39.6

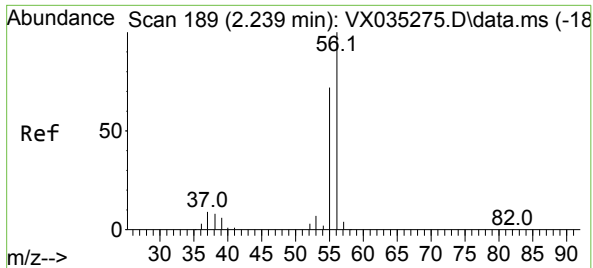


#12
 1,1-Dichloroethene
 Concen: 0.219 ug/l
 RT: 2.318 min Scan# 202
 Delta R.T. 0.000 min
 Lab File: VX035351.D
 Acq: 27 Apr 2023 19:03



Tgt Ion: 96 Resp: 481
 Ion Ratio Lower Upper
 96 100
 61 152.9 128.8 193.2
 98 58.2 51.4 77.0

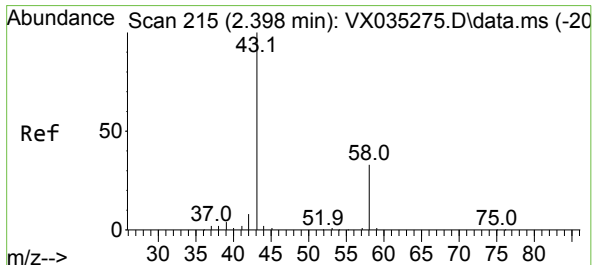
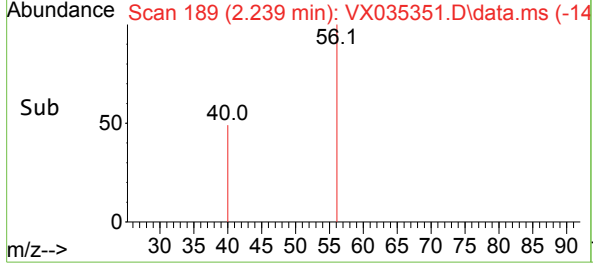
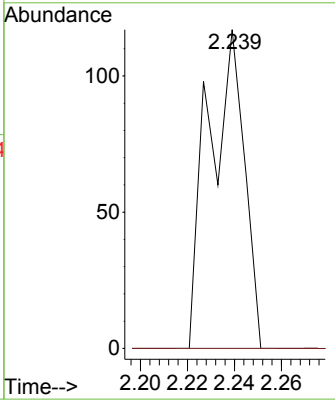
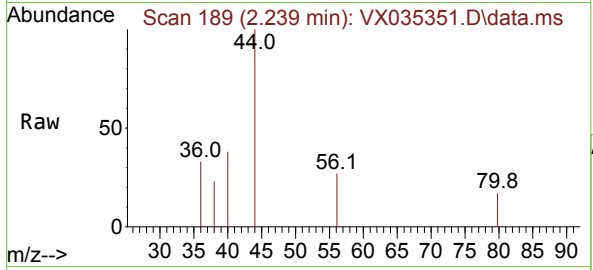




#13
 Acrolein
 Concen: 0.251 ug/l
 RT: 2.239 min Scan# 118
 Delta R.T. 0.000 min
 Lab File: VX035351.D
 Acq: 27 Apr 2023 19:03

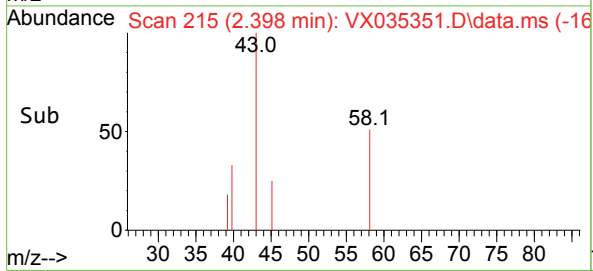
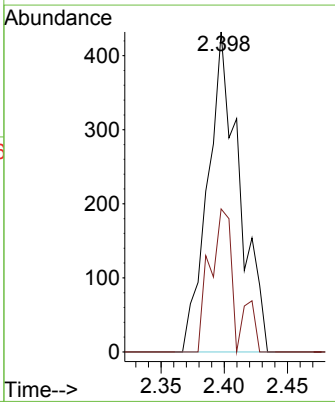
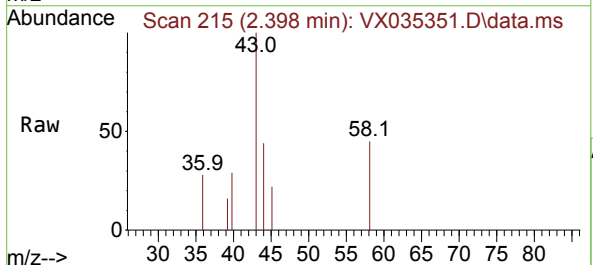
Instrument : MSVOA_X
 ClientSampleId : MW-22

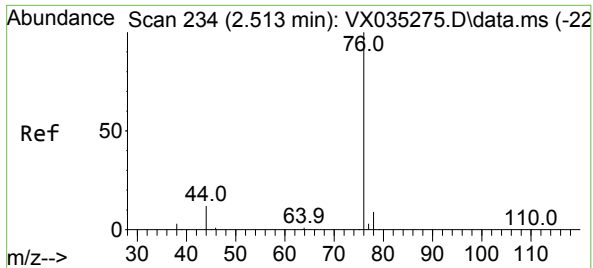
Tgt Ion: 56 Resp: 123
 Ion Ratio Lower Upper
 56 100
 55 0.0 56.6 85.0#



#16
 Acetone
 Concen: 0.631 ug/l
 RT: 2.398 min Scan# 215
 Delta R.T. -0.000 min
 Lab File: VX035351.D
 Acq: 27 Apr 2023 19:03

Tgt Ion: 43 Resp: 749
 Ion Ratio Lower Upper
 43 100
 58 44.7 24.7 37.1#

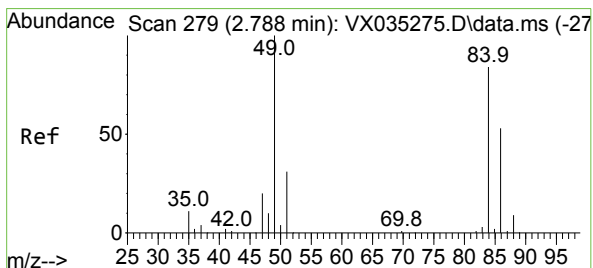
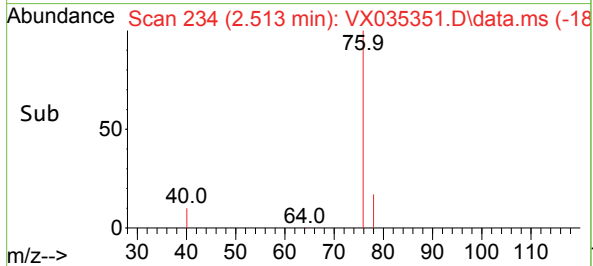
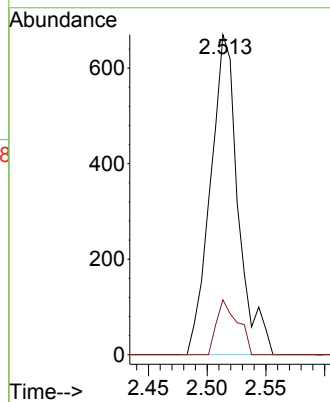
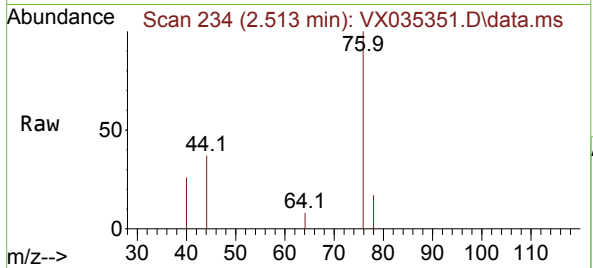




#17
 Carbon Disulfide
 Concen: 0.208 ug/l
 RT: 2.513 min Scan# 211
 Delta R.T. 0.000 min
 Lab File: VX035351.D
 Acq: 27 Apr 2023 19:03

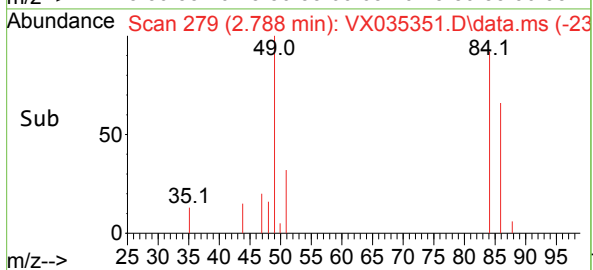
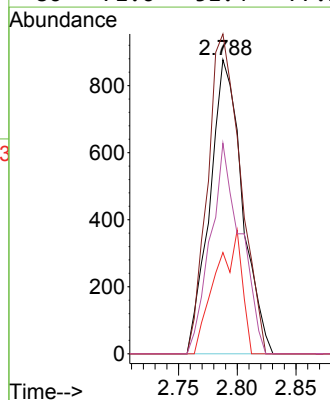
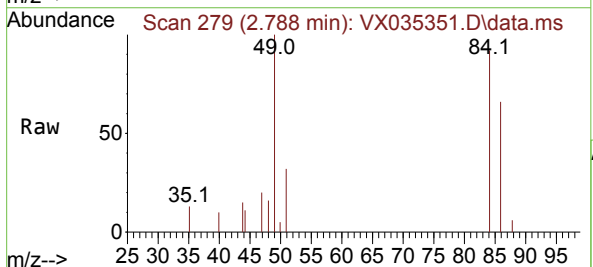
Instrument : MSVOA_X
 ClientSampleId : MW-22

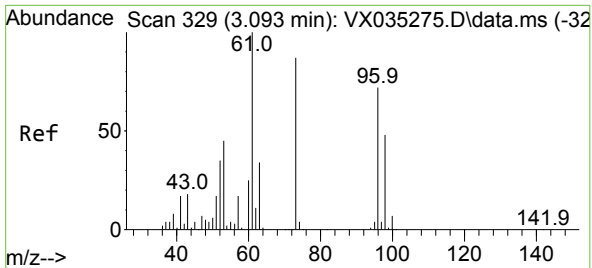
Tgt Ion: 76 Resp: 1099
 Ion Ratio Lower Upper
 76 100
 78 17.2 7.2 10.8#



#20
 Methylene Chloride
 Concen: 0.621 ug/l
 RT: 2.788 min Scan# 279
 Delta R.T. -0.000 min
 Lab File: VX035351.D
 Acq: 27 Apr 2023 19:03

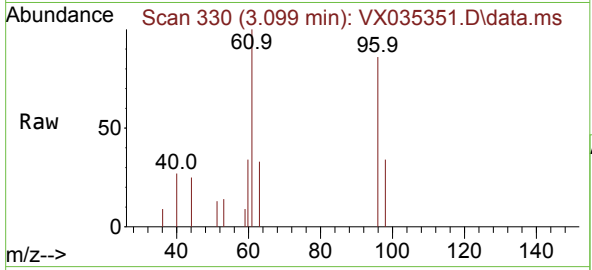
Tgt Ion: 84 Resp: 1691
 Ion Ratio Lower Upper
 84 100
 49 108.8 103.8 155.8
 51 34.4 31.8 47.8
 86 71.6 51.4 77.2



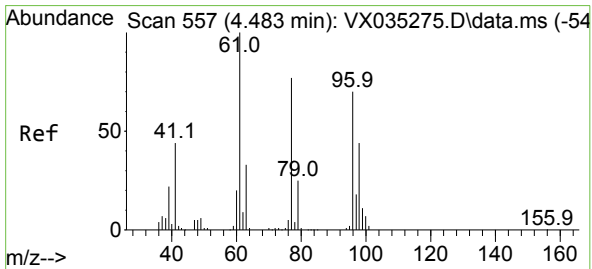
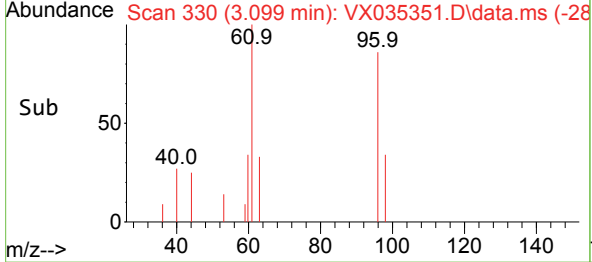
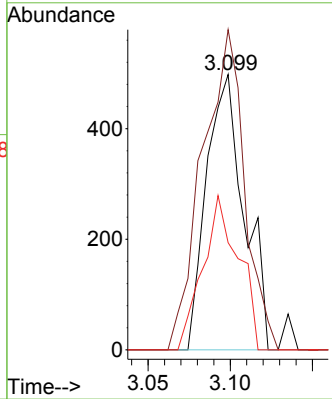


#21
 trans-1,2-Dichloroethene
 Concen: 0.331 ug/l
 RT: 3.099 min Scan# 311
 Delta R.T. 0.006 min
 Lab File: VX035351.D
 Acq: 27 Apr 2023 19:03

Instrument : MSVOA_X
 ClientSampleId : MW-22

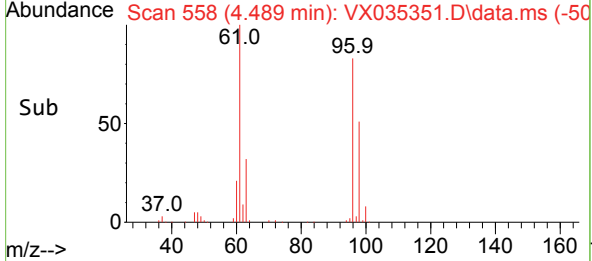
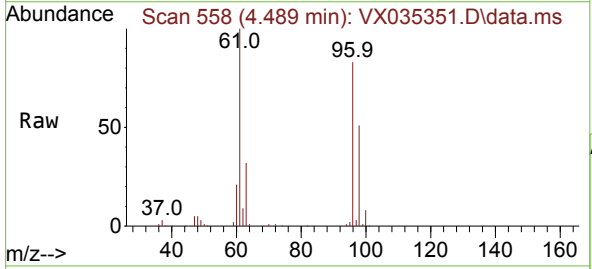
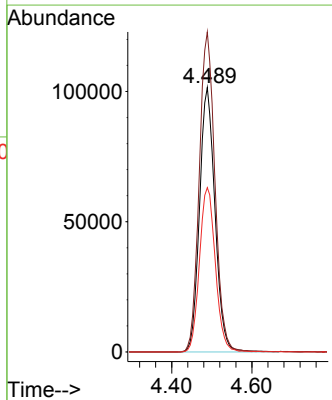


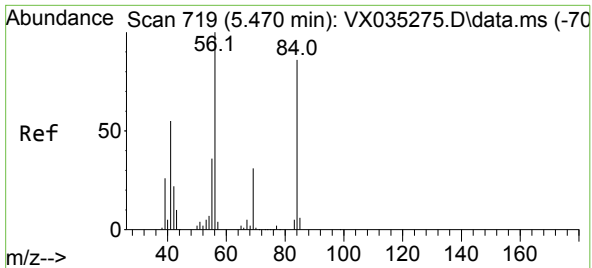
Tgt Ion: 96 Resp: 791
 Ion Ratio Lower Upper
 96 100
 61 116.3 113.0 169.6
 98 39.0 52.1 78.1#



#27
 cis-1,2-Dichloroethene
 Concen: 96.689 ug/l
 RT: 4.489 min Scan# 558
 Delta R.T. 0.006 min
 Lab File: VX035351.D
 Acq: 27 Apr 2023 19:03

Tgt Ion: 96 Resp: 271581
 Ion Ratio Lower Upper
 96 100
 61 123.3 0.0 300.4
 98 64.0 0.0 129.0

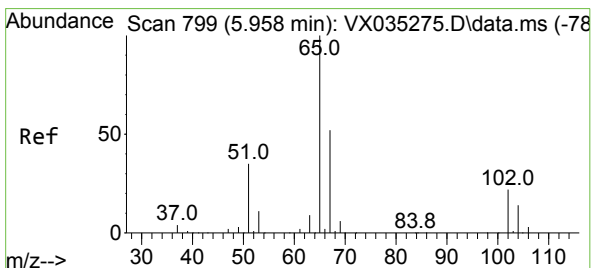
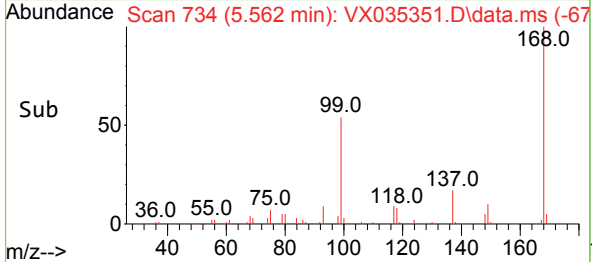
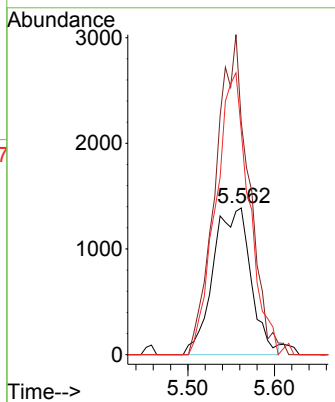
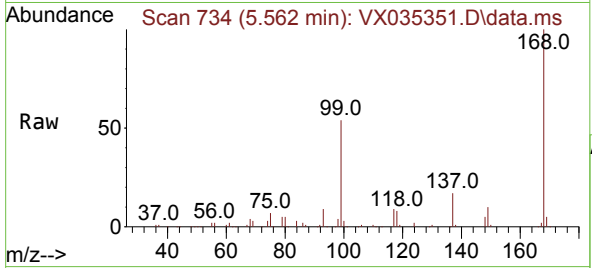




#31
 Cyclohexane
 Concen: 1.081 ug/l
 RT: 5.562 min Scan# 719
 Delta R.T. 0.092 min
 Lab File: VX035351.D
 Acq: 27 Apr 2023 19:03

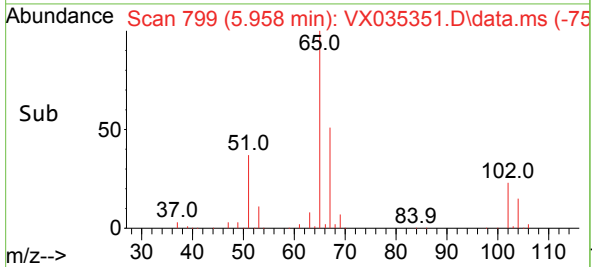
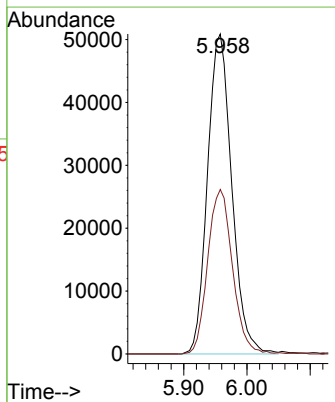
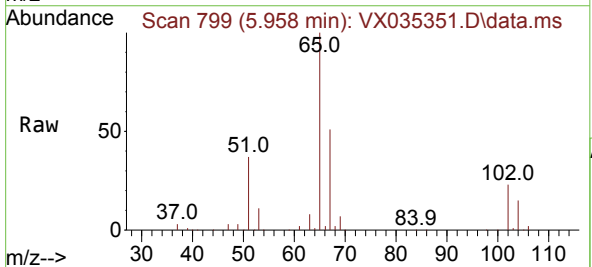
Instrument : MSVOA_X
 ClientSampleId : MW-22

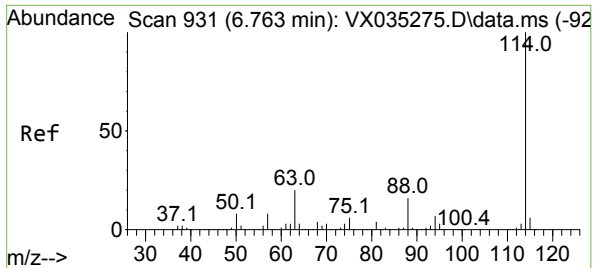
Tgt Ion	Resp	Lower	Upper
56	4191		
69	158.5	23.7	35.5#
84	152.6	68.5	102.7#



#33
 1,2-Dichloroethane-d4
 Concen: 49.591 ug/l
 RT: 5.958 min Scan# 799
 Delta R.T. -0.000 min
 Lab File: VX035351.D
 Acq: 27 Apr 2023 19:03

Tgt Ion	Resp	Lower	Upper
65	135531		
67	52.4	0.0	104.0



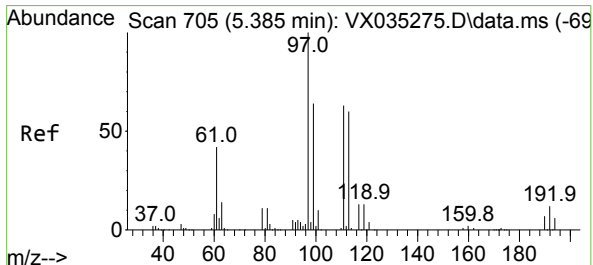
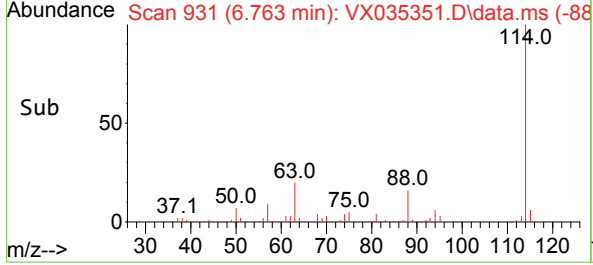
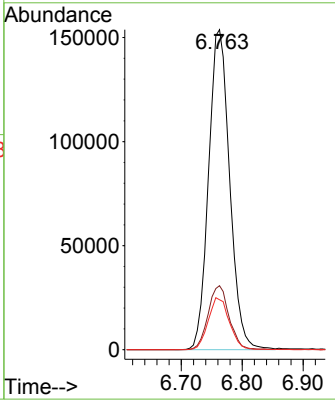
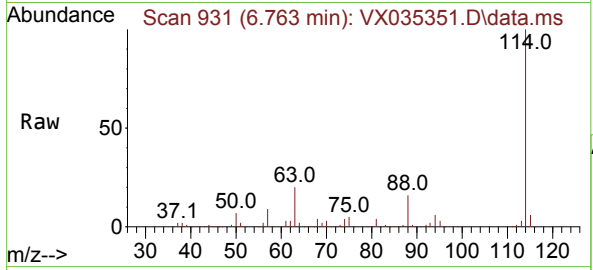


#34
 1,4-Difluorobenzene
 Concen: 50.000 ug/l
 RT: 6.763 min Scan# 911
 Delta R.T. -0.000 min
 Lab File: VX035351.D
 Acq: 27 Apr 2023 19:03

Instrument : MSVOA_X
 ClientSampleId : MW-22

Tgt Ion:114 Resp: 369676

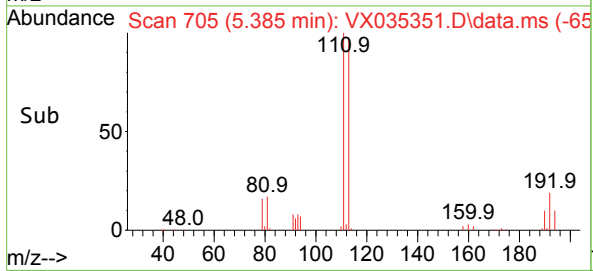
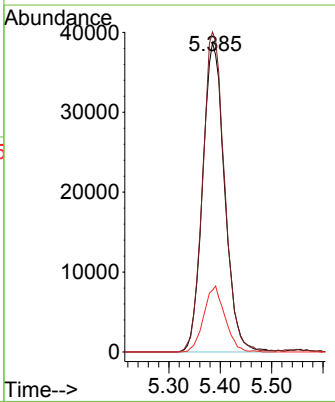
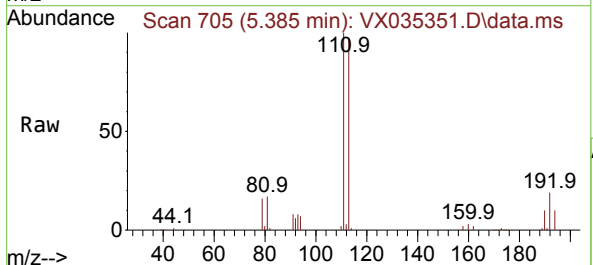
Ion	Ratio	Lower	Upper
114	100		
63	20.0	0.0	42.2
88	15.6	0.0	33.2

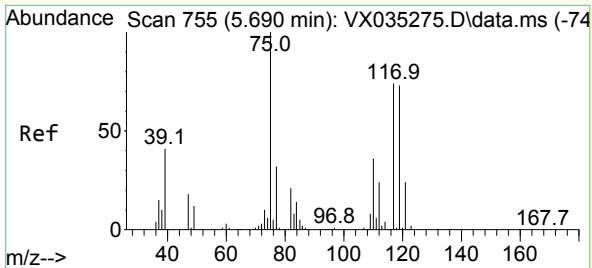


#35
 Dibromofluoromethane
 Concen: 50.708 ug/l
 RT: 5.385 min Scan# 705
 Delta R.T. -0.000 min
 Lab File: VX035351.D
 Acq: 27 Apr 2023 19:03

Tgt Ion:113 Resp: 115055

Ion	Ratio	Lower	Upper
113	100		
111	102.6	83.7	125.5
192	20.4	15.4	23.2

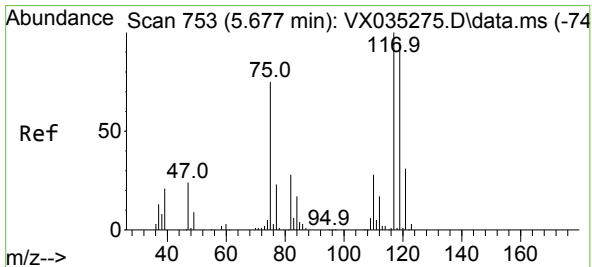
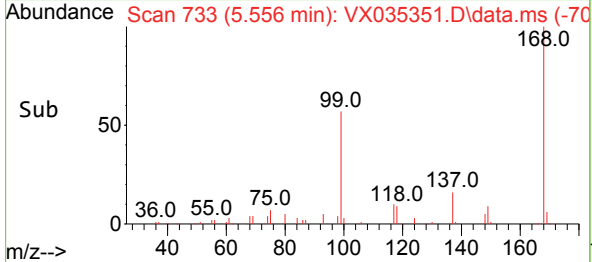
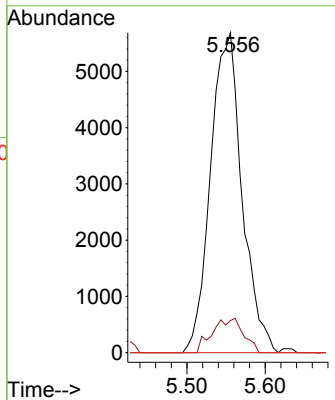
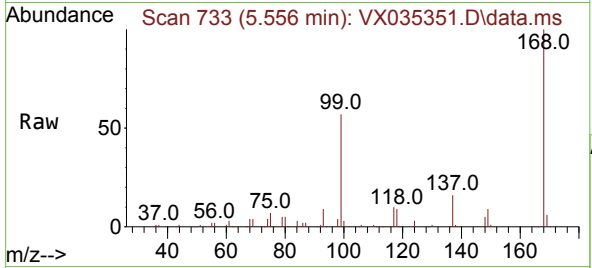




#36
 1,1-Dichloropropene
 Concen: 4.479 ug/l
 RT: 5.556 min Scan# 711
 Delta R.T. -0.135 min
 Lab File: VX035351.D
 Acq: 27 Apr 2023 19:03

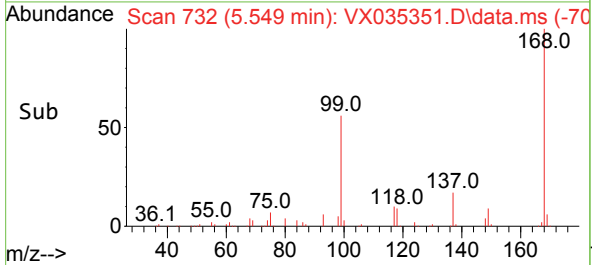
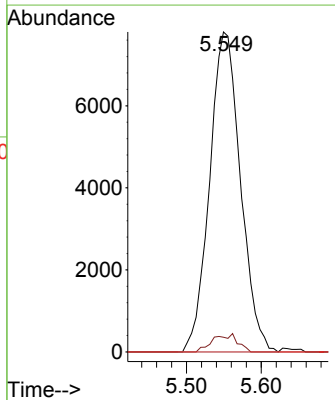
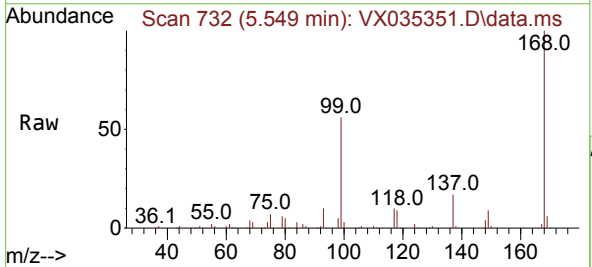
Instrument : MSVOA_X
 ClientSampleId : MW-22

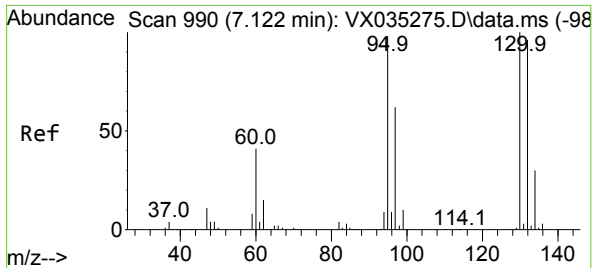
Tgt Ion	Resp	Lower	Upper
75	15870		
75	100		
110	10.6	17.5	52.5#
77	0.0	24.3	36.5#



#38
 Carbon Tetrachloride
 Concen: 6.660 ug/l
 RT: 5.549 min Scan# 732
 Delta R.T. -0.128 min
 Lab File: VX035351.D
 Acq: 27 Apr 2023 19:03

Tgt Ion	Resp	Lower	Upper
117	22401		
117	100		
119	4.6	76.6	114.8#
121	0.0	23.8	35.6#

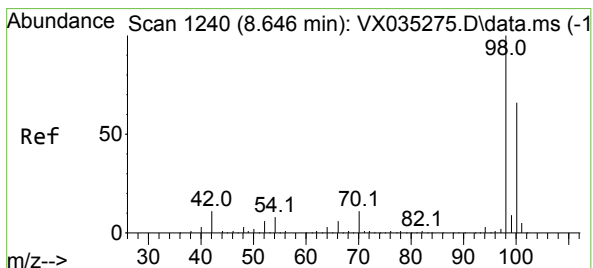
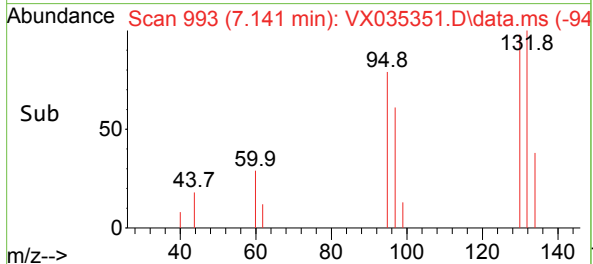
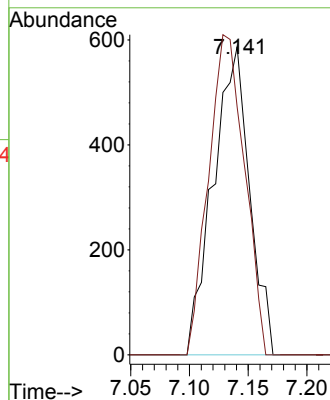
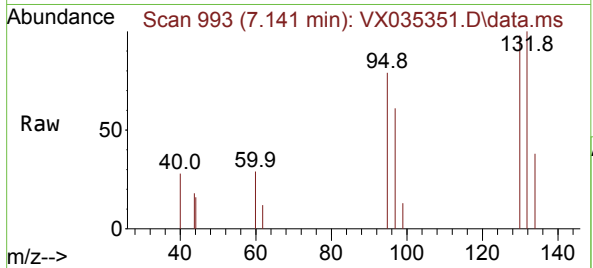




#44
 Trichloroethene
 Concen: 0.452 ug/l
 RT: 7.141 min Scan# 990
 Delta R.T. 0.019 min
 Lab File: VX035351.D
 Acq: 27 Apr 2023 19:03

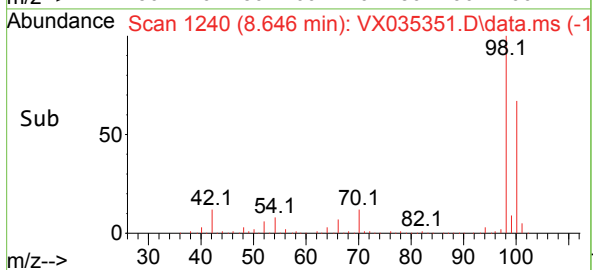
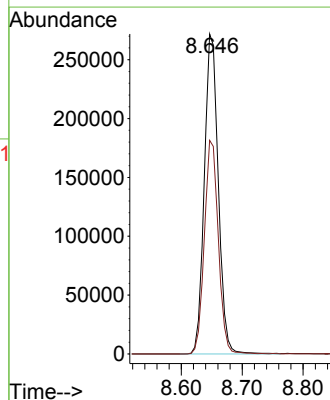
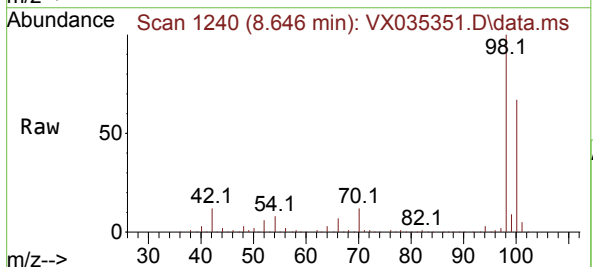
Instrument :
 MSVOA_X
 ClientSampleId :
 MW-22

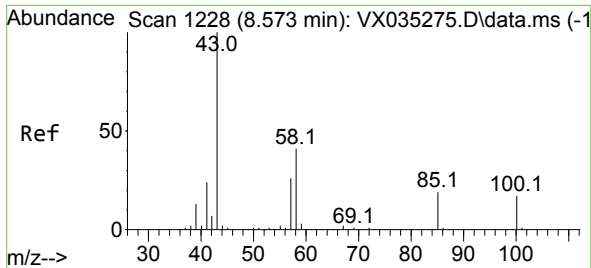
Tgt Ion:130 Resp: 1265
 Ion Ratio Lower Upper
 130 100
 95 80.4 0.0 198.4



#50
 Toluene-d8
 Concen: 50.647 ug/l
 RT: 8.646 min Scan# 1240
 Delta R.T. 0.000 min
 Lab File: VX035351.D
 Acq: 27 Apr 2023 19:03

Tgt Ion: 98 Resp: 433500
 Ion Ratio Lower Upper
 98 100
 100 66.7 52.5 78.7

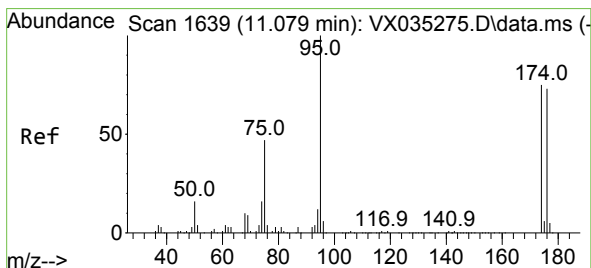
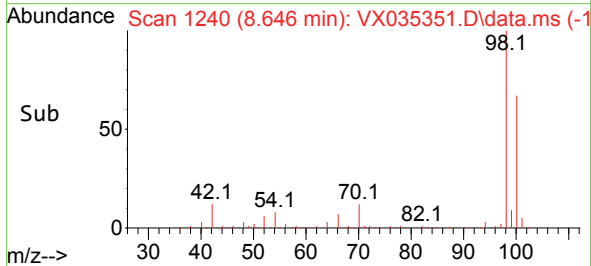
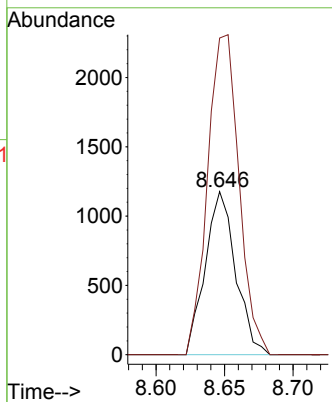
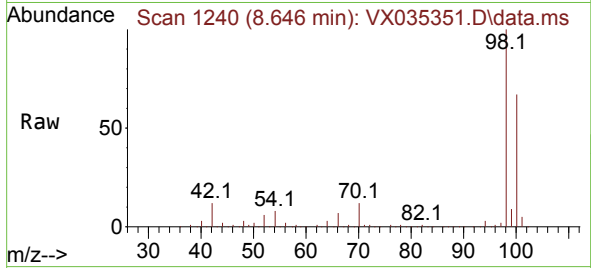




#51
 4-Methyl-2-Pentanone
 Concen: 0.544 ug/l
 RT: 8.646 min Scan# 11
 Delta R.T. 0.073 min
 Lab File: VX035351.D
 Acq: 27 Apr 2023 19:03

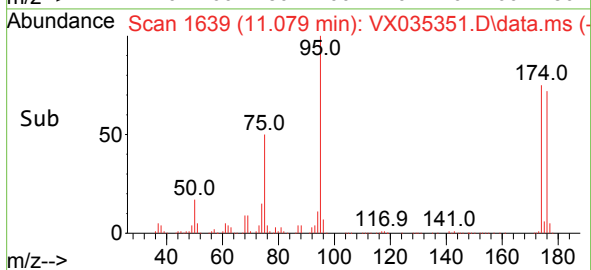
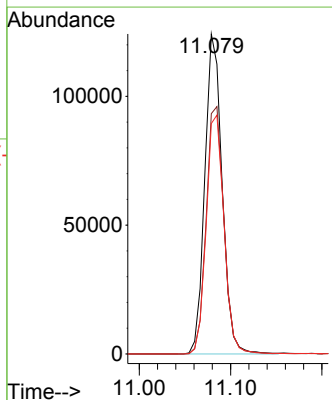
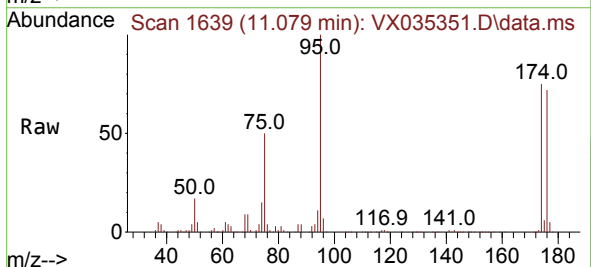
Instrument :
 MSVOA_X
 ClientSampleId :
 MW-22

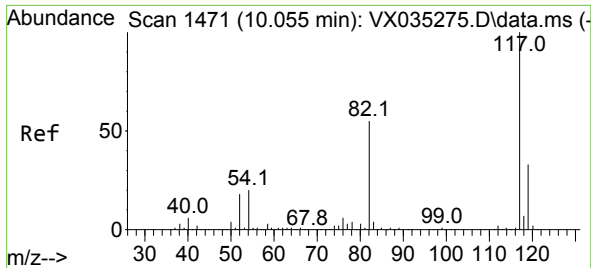
Tgt Ion: 43 Resp: 1817
 Ion Ratio Lower Upper
 43 100
 58 202.8 30.6 46.0#



#62
 4-Bromofluorobenzene
 Concen: 50.566 ug/l
 RT: 11.079 min Scan# 1639
 Delta R.T. -0.000 min
 Lab File: VX035351.D
 Acq: 27 Apr 2023 19:03

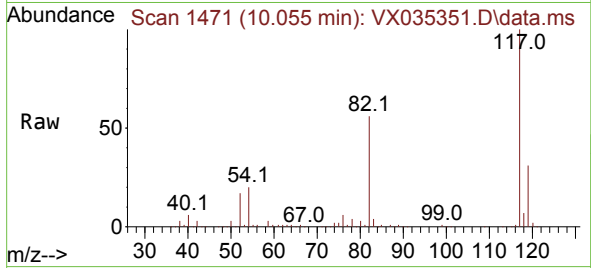
Tgt Ion: 95 Resp: 162814
 Ion Ratio Lower Upper
 95 100
 174 79.6 0.0 147.4
 176 76.8 0.0 140.6



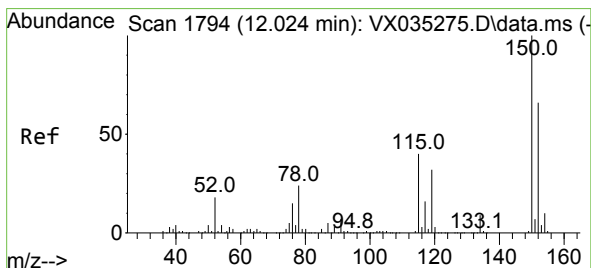
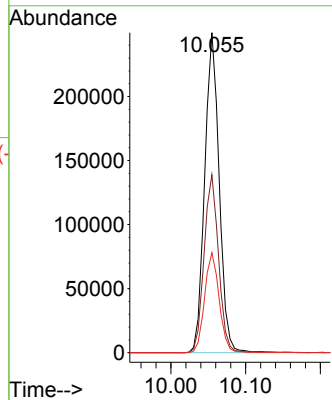
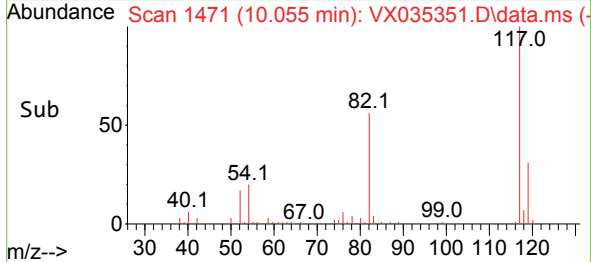


#63
 Chlorobenzene-d5
 Concen: 50.000 ug/l
 RT: 10.055 min Scan# 1471
 Delta R.T. -0.000 min
 Lab File: VX035351.D
 Acq: 27 Apr 2023 19:03

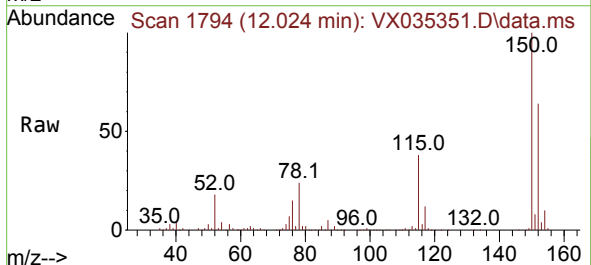
Instrument : MSVOA_X
 ClientSampleId : MW-22



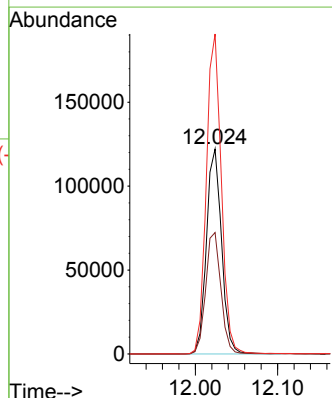
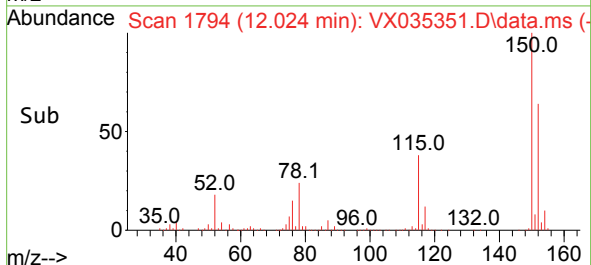
Tgt Ion:117 Resp: 335982
 Ion Ratio Lower Upper
 117 100
 82 55.6 45.0 67.4
 119 31.3 26.0 39.0

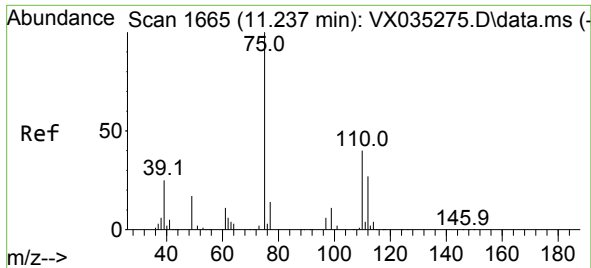


#72
 1,4-Dichlorobenzene-d4
 Concen: 50.000 ug/l
 RT: 12.024 min Scan# 1794
 Delta R.T. -0.000 min
 Lab File: VX035351.D
 Acq: 27 Apr 2023 19:03



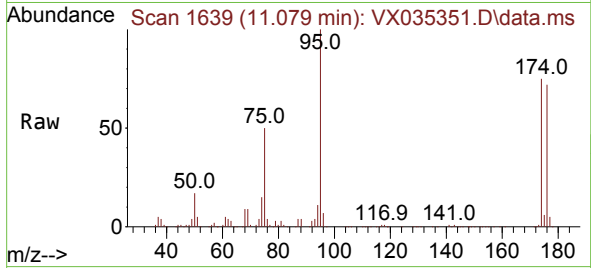
Tgt Ion:152 Resp: 156146
 Ion Ratio Lower Upper
 152 100
 115 59.6 45.0 135.0
 150 154.8 0.0 352.4



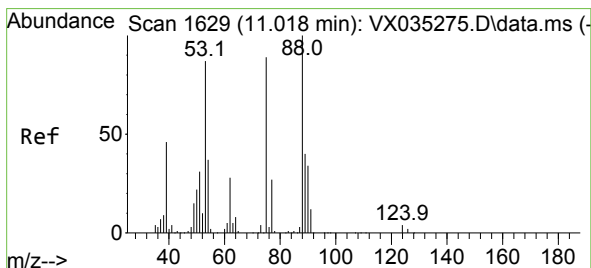
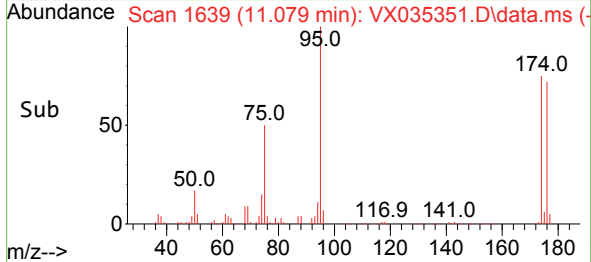
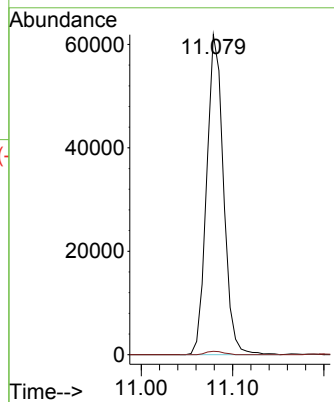


#76
 1,2,3-Trichloropropane
 Concen: 25.325 ug/l
 RT: 11.079 min Scan# 1639
 Delta R.T. -0.158 min
 Lab File: VX035351.D
 Acq: 27 Apr 2023 19:03

Instrument : MSVOA_X
 ClientSampleId : MW-22

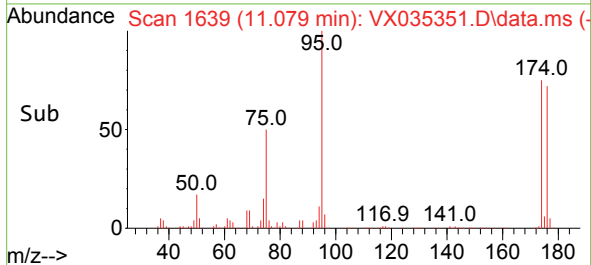
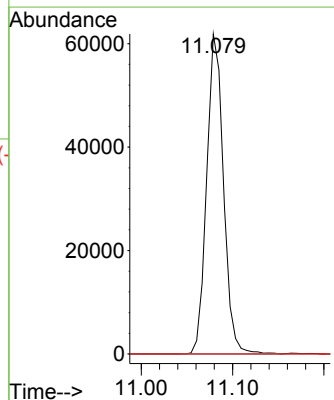
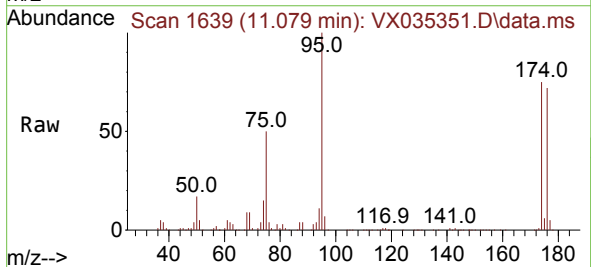


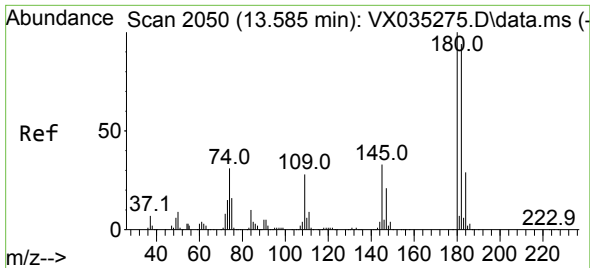
Tgt Ion: 75 Resp: 78881
 Ion Ratio Lower Upper
 75 100
 77 1.1 21.6 64.8#



#81
 trans-1,4-Dichloro-2-butene
 Concen: 82.023 ug/l
 RT: 11.079 min Scan# 1639
 Delta R.T. 0.061 min
 Lab File: VX035351.D
 Acq: 27 Apr 2023 19:03

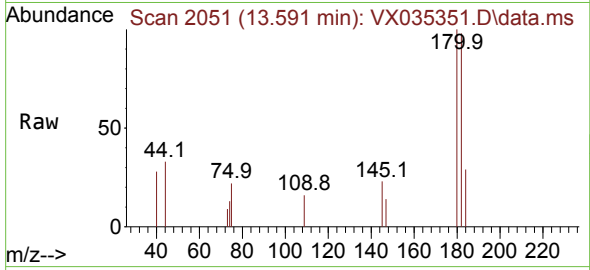
Tgt Ion: 75 Resp: 78881
 Ion Ratio Lower Upper
 75 100
 53 0.0 82.6 124.0#
 89 0.0 36.9 55.3#



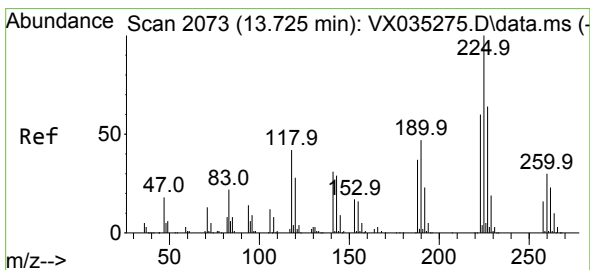
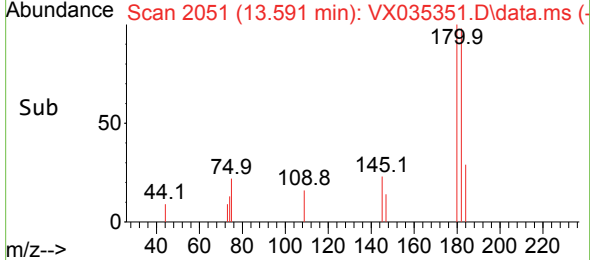
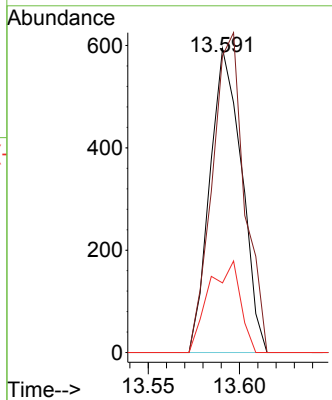


#93
 1,2,4-Trichlorobenzene
 Concen: 0.212 ug/l
 RT: 13.591 min Scan# 2051
 Delta R.T. 0.006 min
 Lab File: VX035351.D
 Acq: 27 Apr 2023 19:03

Instrument : MSVOA_X
 ClientSampleId : MW-22

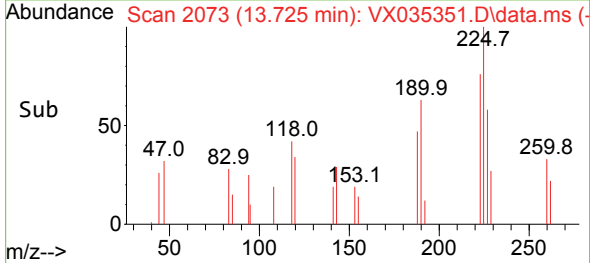
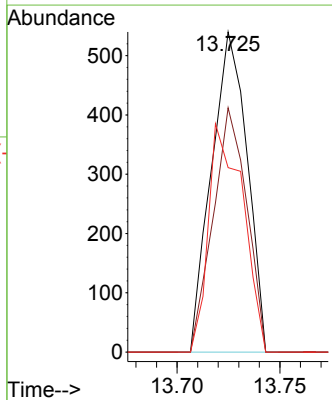
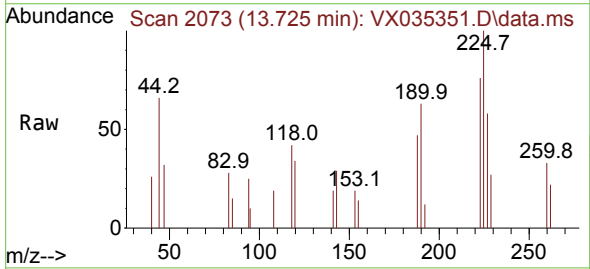


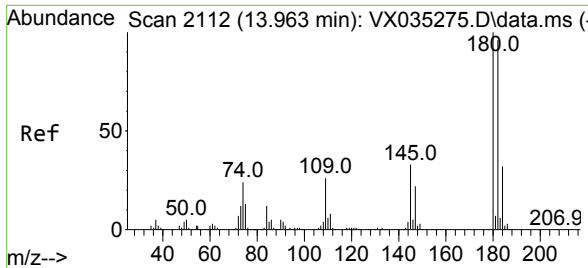
Tgt Ion:180 Resp: 718
 Ion Ratio Lower Upper
 180 100
 182 106.8 47.0 141.0
 145 29.9 15.9 47.7



#94
 Hexachlorobutadiene
 Concen: 0.437 ug/l
 RT: 13.725 min Scan# 2073
 Delta R.T. -0.000 min
 Lab File: VX035351.D
 Acq: 27 Apr 2023 19:03

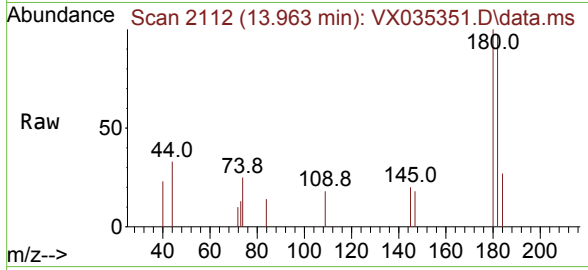
Tgt Ion:225 Resp: 650
 Ion Ratio Lower Upper
 225 100
 223 72.2 32.1 96.5
 227 68.8 31.8 95.4





#96
 1,2,3-Trichlorobenzene
 Concen: 0.219 ug/l
 RT: 13.963 min Scan# 21
 Delta R.T. -0.000 min
 Lab File: VX035351.D
 Acq: 27 Apr 2023 19:03

Instrument :
 MSVOA_X
 ClientSampleId :
 MW-22



Tgt Ion	Resp	Ion Ratio	Lower	Upper
180	100			
182	110.1	48.0	144.2	
145	26.3	17.7	53.1	

