

Data Path : Z:\voasrv\HPCHEM1\MSVOA_X\Data\VX042723\
 Data File : VX035370.D
 Acq On : 28 Apr 2023 06:55
 Operator : JC/MD
 Sample : 02522-16
 Misc : 5.0mL/MSVOA_X/WATER
 ALS Vial : 47 Sample Multiplier: 1

Instrument :
 MSVOA_X
 ClientSampleId :
 MW-8

Quant Time: Apr 28 07:32:59 2023
 Quant Method : Z:\voasrv\HPCHEM1\MSVOA_X\Method\82X042523W.M
 Quant Title : SW846 8260
 QLast Update : Tue Apr 25 16:31:40 2023
 Response via : Initial Calibration

Compound	R.T.	QIon	Response	Conc	Units	Dev(Min)

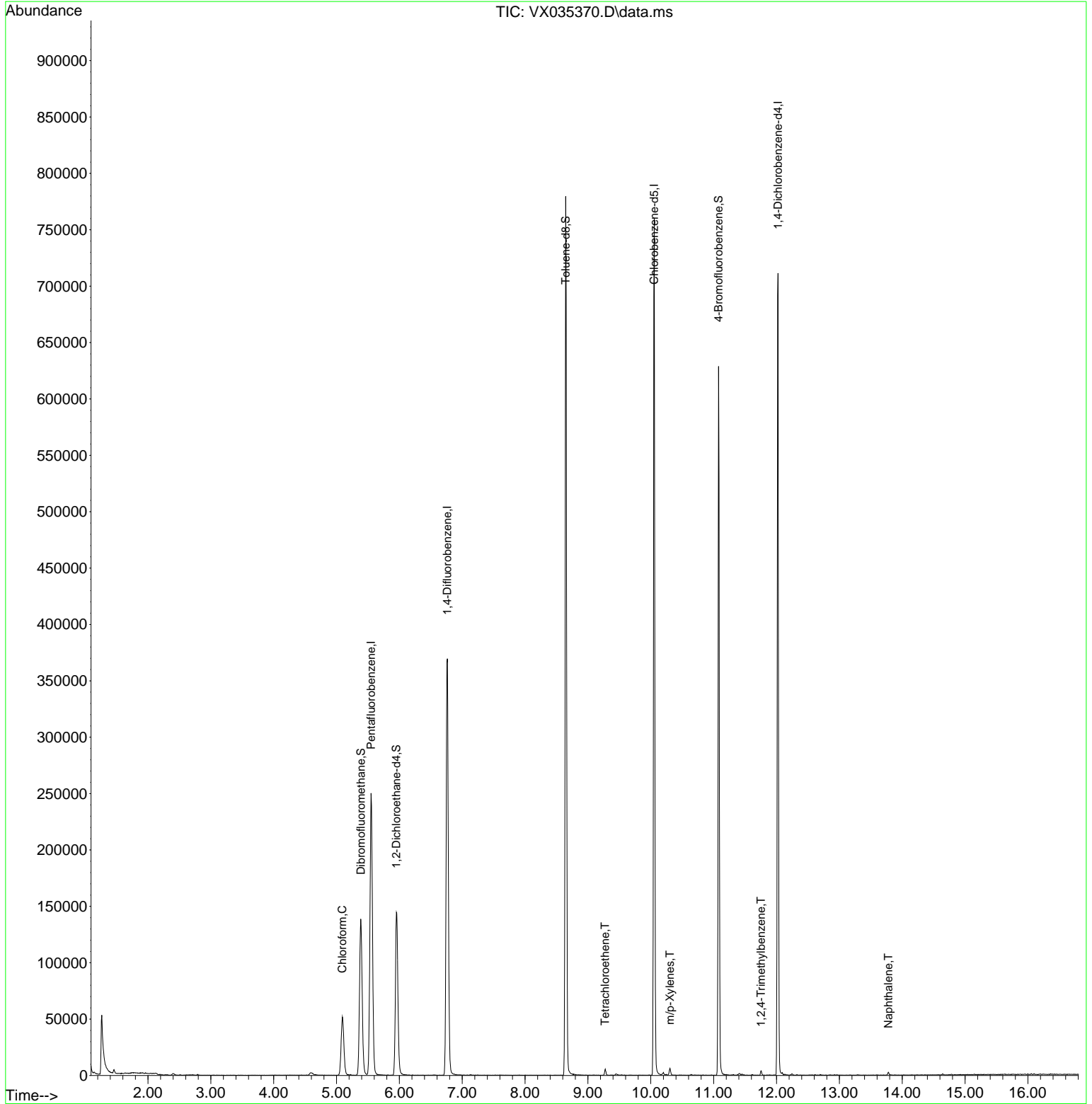
Internal Standards						
1) Pentafluorobenzene	5.550	168	242149	50.000	ug/l	0.00
34) 1,4-Difluorobenzene	6.763	114	395377	50.000	ug/l	0.00
63) Chlorobenzene-d5	10.055	117	358966	50.000	ug/l	0.00
72) 1,4-Dichlorobenzene-d4	12.024	152	160440	50.000	ug/l	0.00
System Monitoring Compounds						
33) 1,2-Dichloroethane-d4	5.952	65	143055	48.968	ug/l	0.00
Spiked Amount	50.000	Range 78 - 117	Recovery	=	97.940%	
35) Dibromofluoromethane	5.385	113	125048	51.530	ug/l	0.00
Spiked Amount	50.000	Range 75 - 124	Recovery	=	103.060%	
50) Toluene-d8	8.647	98	462906	50.567	ug/l	0.00
Spiked Amount	50.000	Range 92 - 112	Recovery	=	101.140%	
62) 4-Bromofluorobenzene	11.079	95	171367	49.762	ug/l	0.00
Spiked Amount	50.000	Range 83 - 123	Recovery	=	99.520%	
Target Compounds						
						Qvalue
30) Chloroform	5.093	83	64917	13.939	ug/l	97
64) Tetrachloroethene	9.275	164	1008	0.367	ug/l	94
68) m/p-Xylenes	10.305	106	1654	0.321	ug/l	88
84) 1,2,4-Trimethylbenzene	11.756	105	2166	0.218	ug/l	94
95) Naphthalene	13.780	128	2508	0.234	ug/l #	90

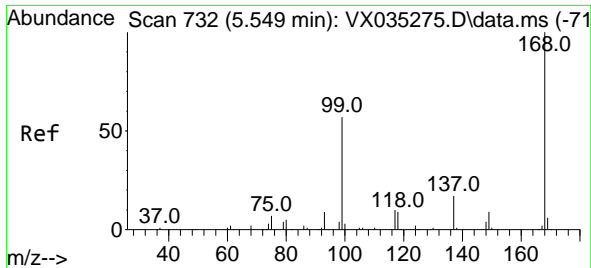
(#) = qualifier out of range (m) = manual integration (+) = signals summed

Data Path : Z:\voasrv\HPCHEM1\MSVOA_X\Data\VX042723\
 Data File : VX035370.D
 Acq On : 28 Apr 2023 06:55
 Operator : JC/MD
 Sample : 02522-16
 Misc : 5.0mL/MSVOA_X/WATER
 ALS Vial : 47 Sample Multiplier: 1

Instrument :
 MSVOA_X
ClientSampleId :
 MW-8

Quant Time: Apr 28 07:32:59 2023
 Quant Method : Z:\voasrv\HPCHEM1\MSVOA_X\Method\82X042523W.M
 Quant Title : SW846 8260
 QLast Update : Tue Apr 25 16:31:40 2023
 Response via : Initial Calibration

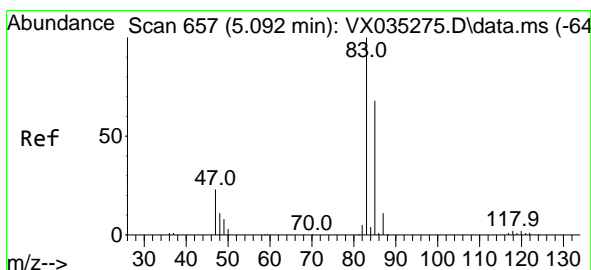
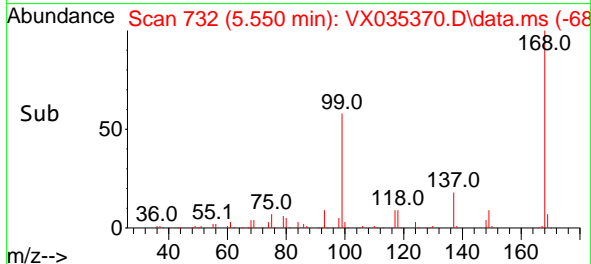
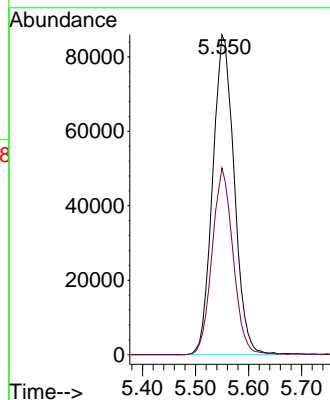
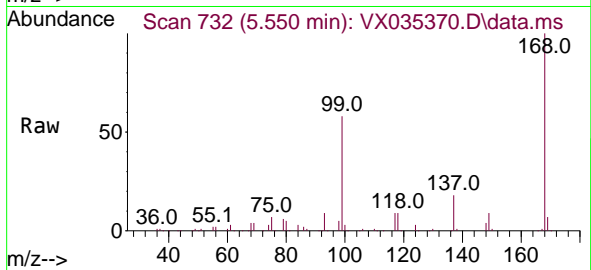




#1
 Pentafluorobenzene
 Concen: 50.000 ug/l
 RT: 5.550 min Scan# 71
 Delta R.T. 0.001 min
 Lab File: VX035370.D
 Acq: 28 Apr 2023 06:55

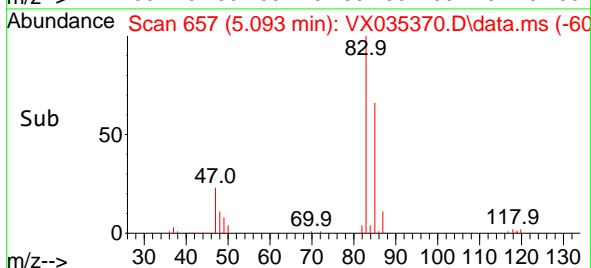
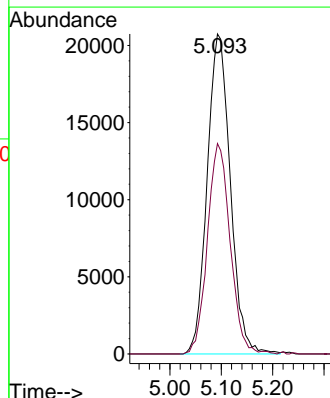
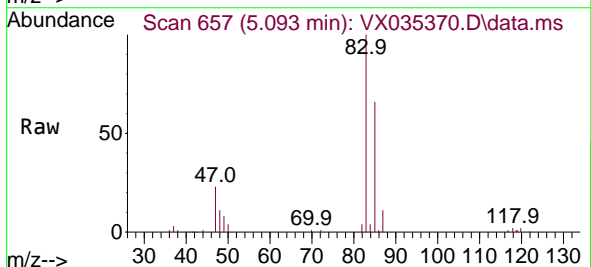
Instrument :
 MSVOA_X
 ClientSampleId :
 MW-8

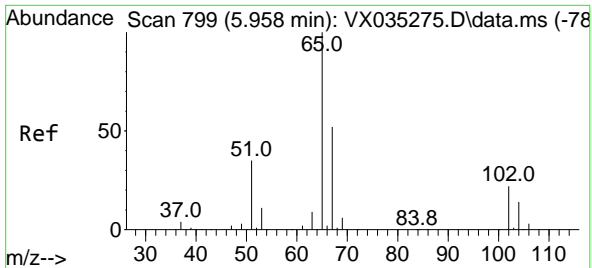
Tgt Ion:168 Resp: 242149
 Ion Ratio Lower Upper
 168 100
 99 58.3 45.7 68.5



#30
 Chloroform
 Concen: 13.939 ug/l
 RT: 5.093 min Scan# 657
 Delta R.T. 0.001 min
 Lab File: VX035370.D
 Acq: 28 Apr 2023 06:55

Tgt Ion: 83 Resp: 64917
 Ion Ratio Lower Upper
 83 100
 85 65.7 50.6 76.0

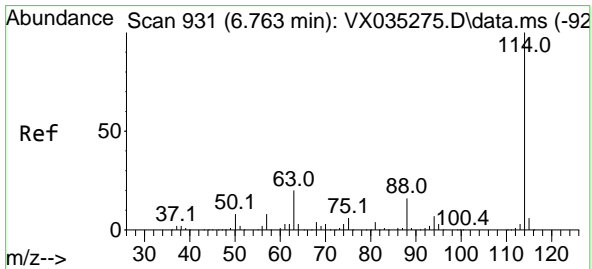
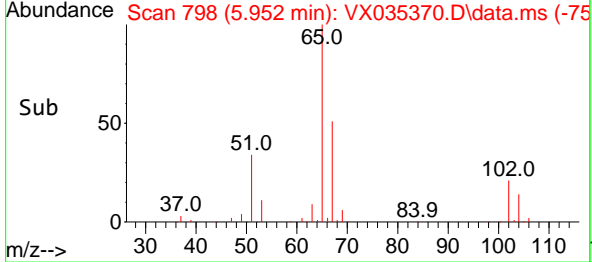
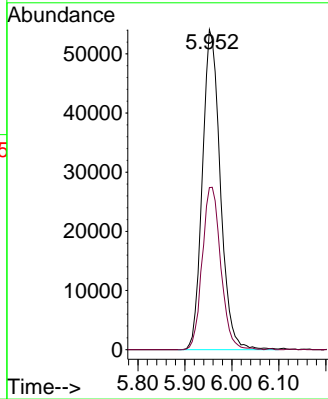
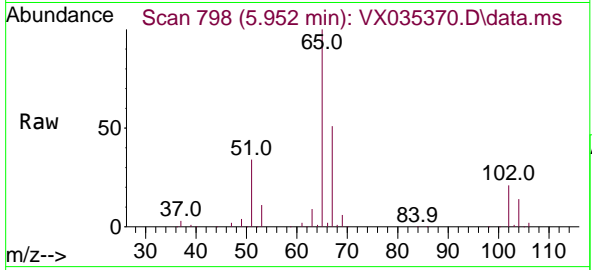




#33
 1,2-Dichloroethane-d4
 Concen: 48.968 ug/l
 RT: 5.952 min Scan# 798
 Delta R.T. -0.006 min
 Lab File: VX035370.D
 Acq: 28 Apr 2023 06:55

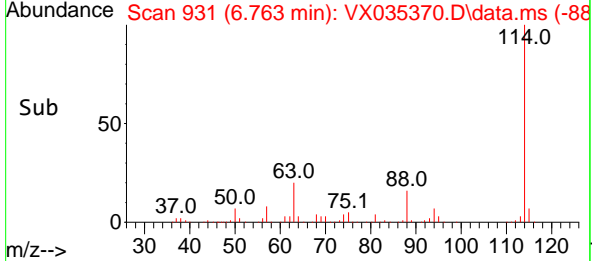
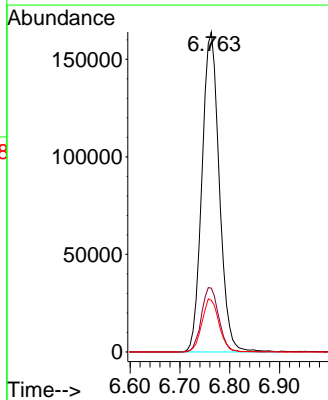
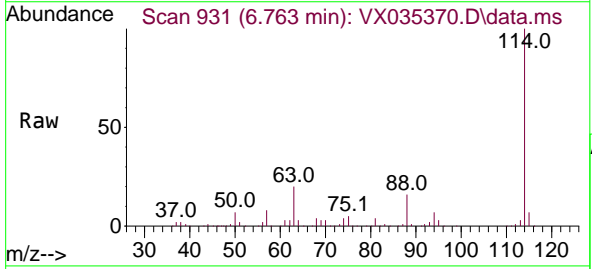
Instrument : MSVOA_X
 ClientSampleId : MW-8

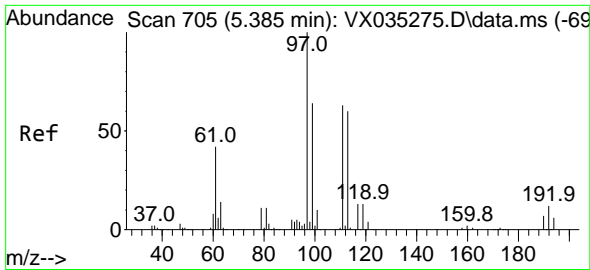
Tgt Ion: 65 Resp: 143055
 Ion Ratio Lower Upper
 65 100
 67 52.5 0.0 104.0



#34
 1,4-Difluorobenzene
 Concen: 50.000 ug/l
 RT: 6.763 min Scan# 931
 Delta R.T. -0.000 min
 Lab File: VX035370.D
 Acq: 28 Apr 2023 06:55

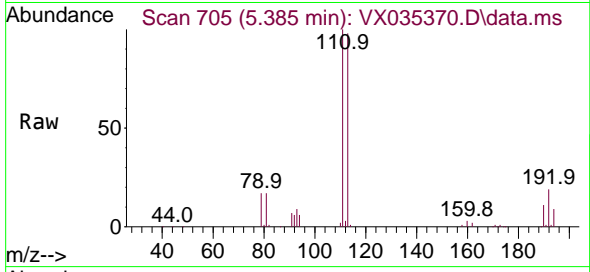
Tgt Ion: 114 Resp: 395377
 Ion Ratio Lower Upper
 114 100
 63 19.9 0.0 42.2
 88 16.1 0.0 33.2



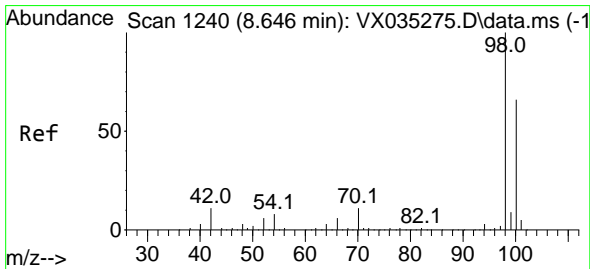
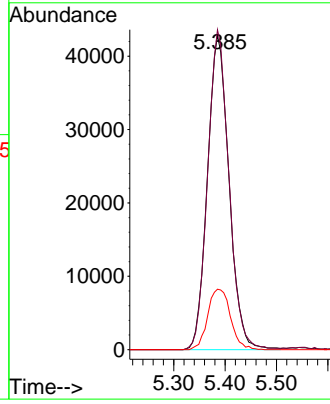
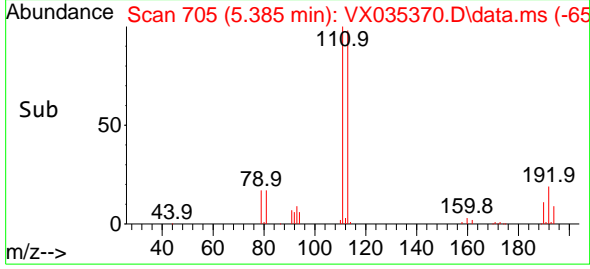


#35
 Dibromofluoromethane
 Concen: 51.530 ug/l
 RT: 5.385 min Scan# 705
 Delta R.T. 0.000 min
 Lab File: VX035370.D
 Acq: 28 Apr 2023 06:55

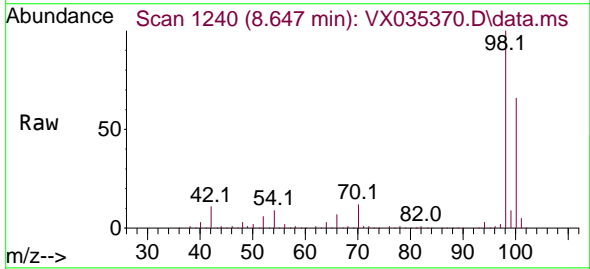
Instrument : MSVOA_X
 ClientSampleId : MW-8



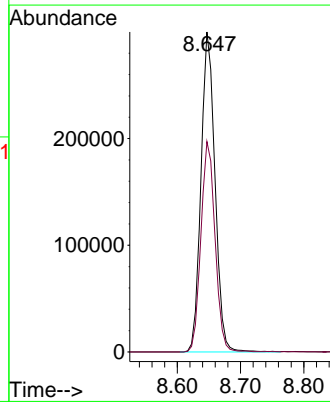
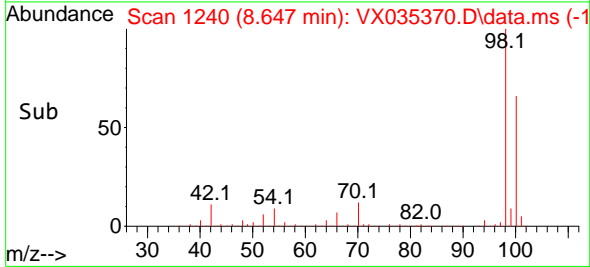
Tgt Ion: 113 Resp: 125048
 Ion Ratio Lower Upper
 113 100
 111 100.3 83.7 125.5
 192 20.3 15.4 23.2

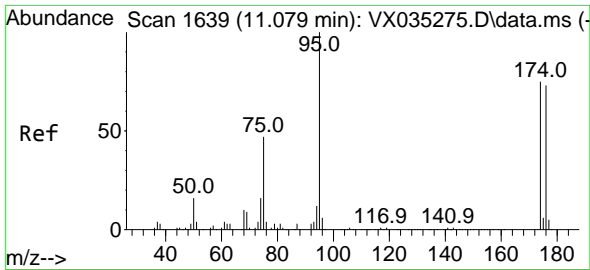


#50
 Toluene-d8
 Concen: 50.567 ug/l
 RT: 8.647 min Scan# 1240
 Delta R.T. 0.001 min
 Lab File: VX035370.D
 Acq: 28 Apr 2023 06:55



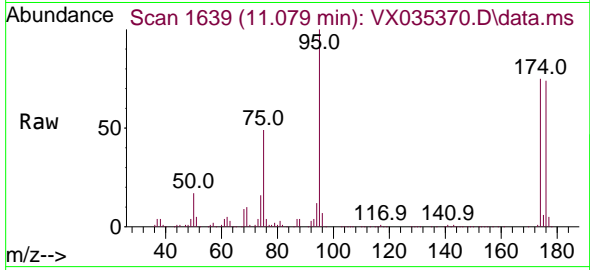
Tgt Ion: 98 Resp: 462906
 Ion Ratio Lower Upper
 98 100
 100 66.4 52.5 78.7



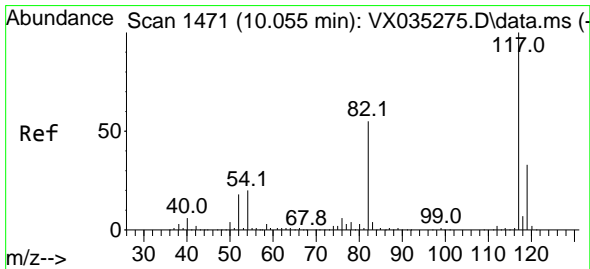
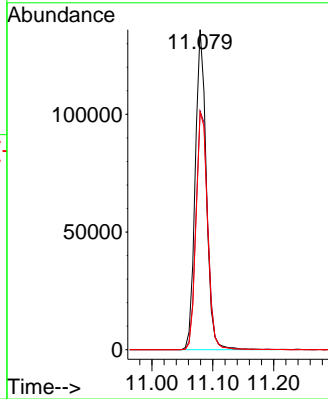
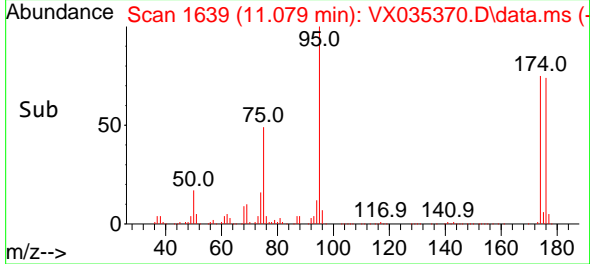


#62
 4-Bromofluorobenzene
 Concen: 49.762 ug/l
 RT: 11.079 min Scan# 1639
 Delta R.T. 0.000 min
 Lab File: VX035370.D
 Acq: 28 Apr 2023 06:55

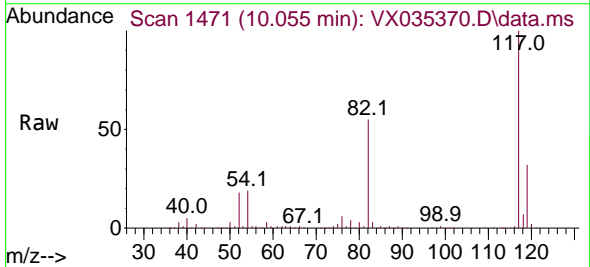
Instrument : MSVOA_X
 ClientSampleId : MW-8



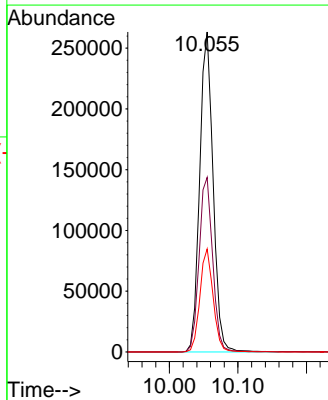
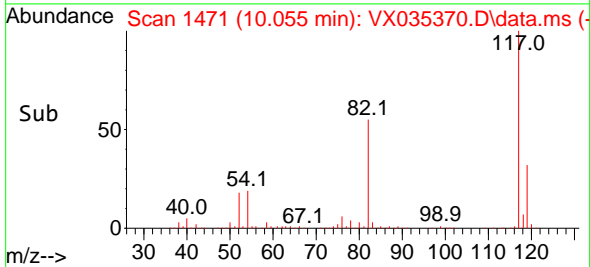
Tgt Ion: 95 Resp: 171367
 Ion Ratio Lower Upper
 95 100
 174 79.1 0.0 147.4
 176 77.0 0.0 140.6

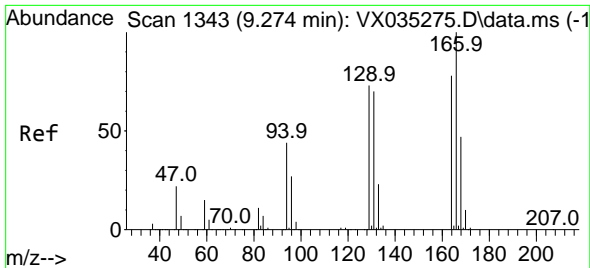


#63
 Chlorobenzene-d5
 Concen: 50.000 ug/l
 RT: 10.055 min Scan# 1471
 Delta R.T. 0.000 min
 Lab File: VX035370.D
 Acq: 28 Apr 2023 06:55



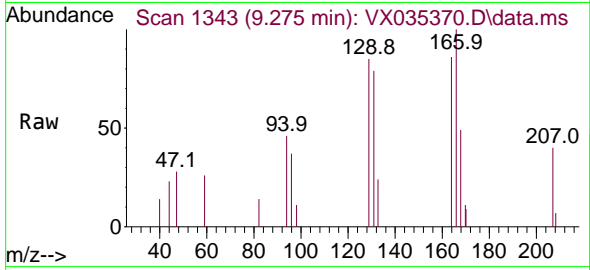
Tgt Ion: 117 Resp: 358966
 Ion Ratio Lower Upper
 117 100
 82 54.5 45.0 67.4
 119 32.2 26.0 39.0



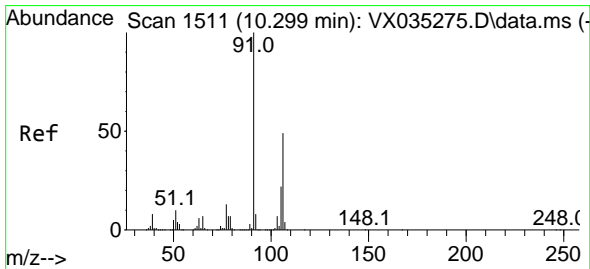
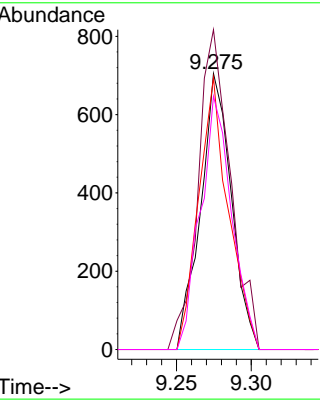
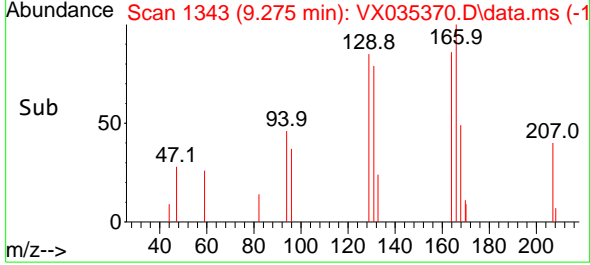


#64
 Tetrachloroethene
 Concen: 0.367 ug/l
 RT: 9.275 min Scan# 11
 Delta R.T. 0.001 min
 Lab File: VX035370.D
 Acq: 28 Apr 2023 06:55

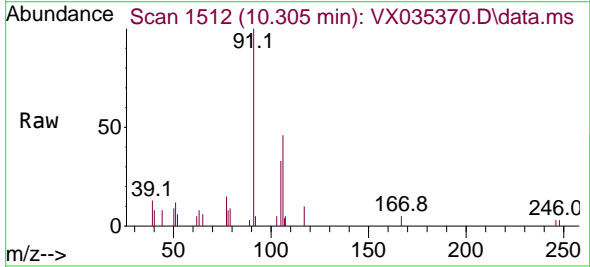
Instrument :
 MSVOA_X
 ClientSampleId :
 MW-8



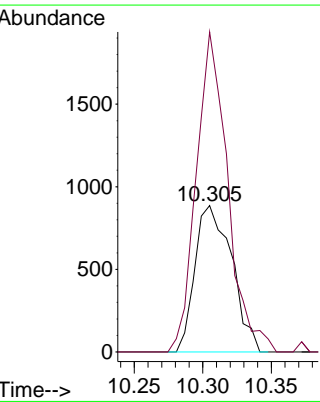
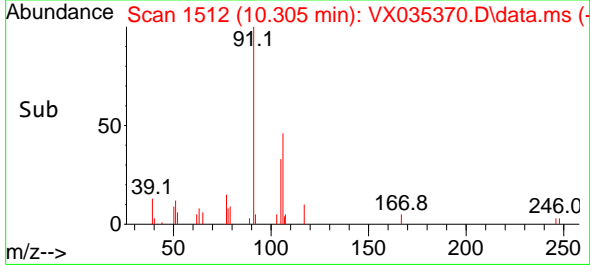
Tgt Ion:164 Resp: 1008
 Ion Ratio Lower Upper
 164 100
 166 115.9 102.7 154.1
 129 98.6 75.6 113.4
 131 91.8 73.7 110.5

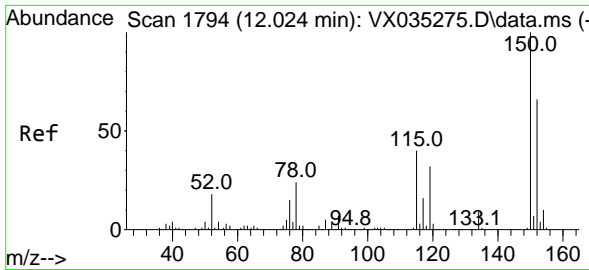


#68
 m/p-Xylenes
 Concen: 0.321 ug/l
 RT: 10.305 min Scan# 1512
 Delta R.T. 0.006 min
 Lab File: VX035370.D
 Acq: 28 Apr 2023 06:55



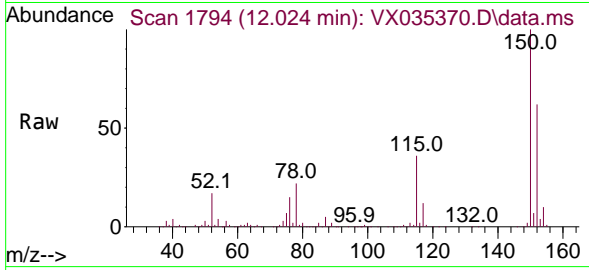
Tgt Ion:106 Resp: 1654
 Ion Ratio Lower Upper
 106 100
 91 187.1 164.0 246.0



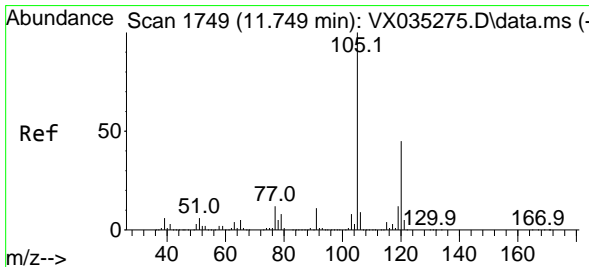
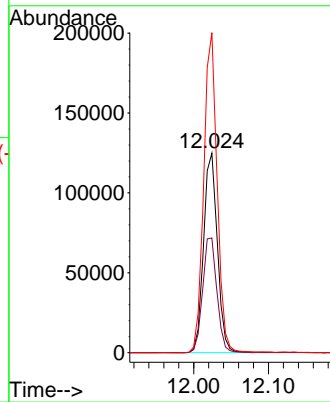
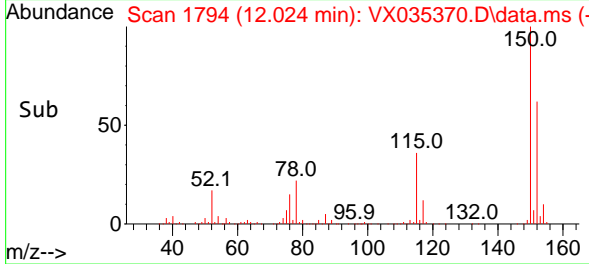


#72
 1,4-Dichlorobenzene-d4
 Concen: 50.000 ug/l
 RT: 12.024 min Scan# 1
 Delta R.T. 0.000 min
 Lab File: VX035370.D
 Acq: 28 Apr 2023 06:55

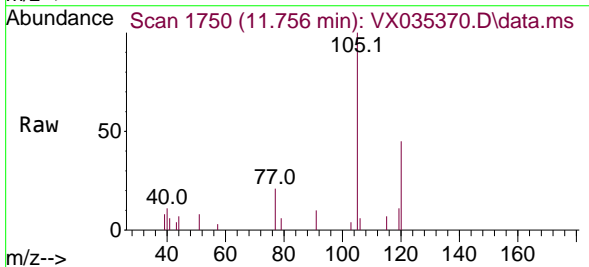
Instrument :
 MSVOA_X
 ClientSampleId :
 MW-8



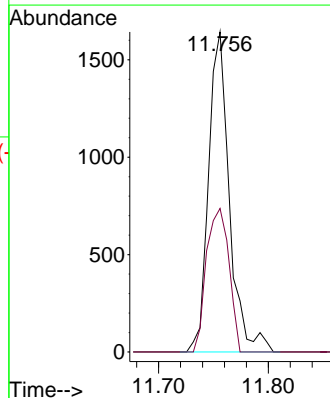
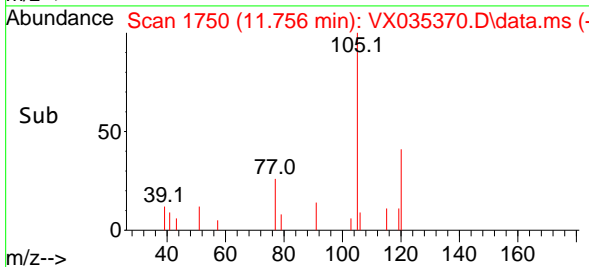
Tgt Ion:152 Resp: 160440
 Ion Ratio Lower Upper
 152 100
 115 59.4 45.0 135.0
 150 155.7 0.0 352.4

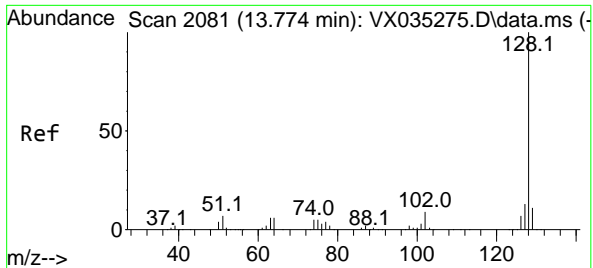


#84
 1,2,4-Trimethylbenzene
 Concen: 0.218 ug/l
 RT: 11.756 min Scan# 1750
 Delta R.T. 0.007 min
 Lab File: VX035370.D
 Acq: 28 Apr 2023 06:55



Tgt Ion:105 Resp: 2166
 Ion Ratio Lower Upper
 105 100
 120 48.7 22.4 67.0





#95
 Naphthalene
 Concen: 0.234 ug/l
 RT: 13.780 min Scan# 20
 Delta R.T. 0.006 min
 Lab File: VX035370.D
 Acq: 28 Apr 2023 06:55

Instrument : MSVOA_X
 ClientSampleId : MW-8

Tgt Ion:128 Resp: 2508

Ion	Ratio	Lower	Upper
128	100		
127	7.1	10.2	15.4#
129	9.1	8.6	13.0

