

Data Path : Z:\VOASRV\HPCHEM1\MSVOA X\DATA\VX042920\
 Data File : VX015972.D
 Acq On : 29 Apr 2020 13:24
 Operator : JC/SP
 Sample : L2406-01
 Misc : 5.0mL/MSVOA X/WATER
 ALS Vial : 5 Sample Multiplier: 1

Instrument :
 MSVOA_X
 ClientSampleId :

Quant Time: Apr 30 05:34:04 2020
 Quant Method : Z:\VOASRV\HPCHEM1\MSVOA_X\METHOD\82X042820W.M
 Quant Title : SW846 8260
 QLast Update : Tue Apr 28 17:30:11 2020
 Response via : Initial Calibration

Internal Standards	R.T.	QIon	Response	Conc	Units	Dev(Min)
1) Pentafluorobenzene	5.63	168	276871	50.00	ug/l	0.00
34) 1,4-Difluorobenzene	6.83	114	446188	50.00	ug/l	0.00
63) Chlorobenzene-d5	10.10	117	428826	50.00	ug/l	0.00
72) 1,4-Dichlorobenzene-d4	12.06	152	216391	50.00	ug/l	0.00

System Monitoring Compounds

33) 1,2-Dichloroethane-d4	6.03	65	172418	47.63	ug/l	0.00
Spiked Amount	50.000		Recovery	=	95.26%	
35) Dibromofluoromethane	5.46	113	131617	47.29	ug/l	0.00
Spiked Amount	50.000		Recovery	=	94.58%	
50) Toluene-d8	8.70	98	542533	52.13	ug/l	0.00
Spiked Amount	50.000		Recovery	=	104.26%	
62) 4-Bromofluorobenzene	11.12	95	213702	52.36	ug/l	0.00
Spiked Amount	50.000		Recovery	=	104.72%	

Target Compounds

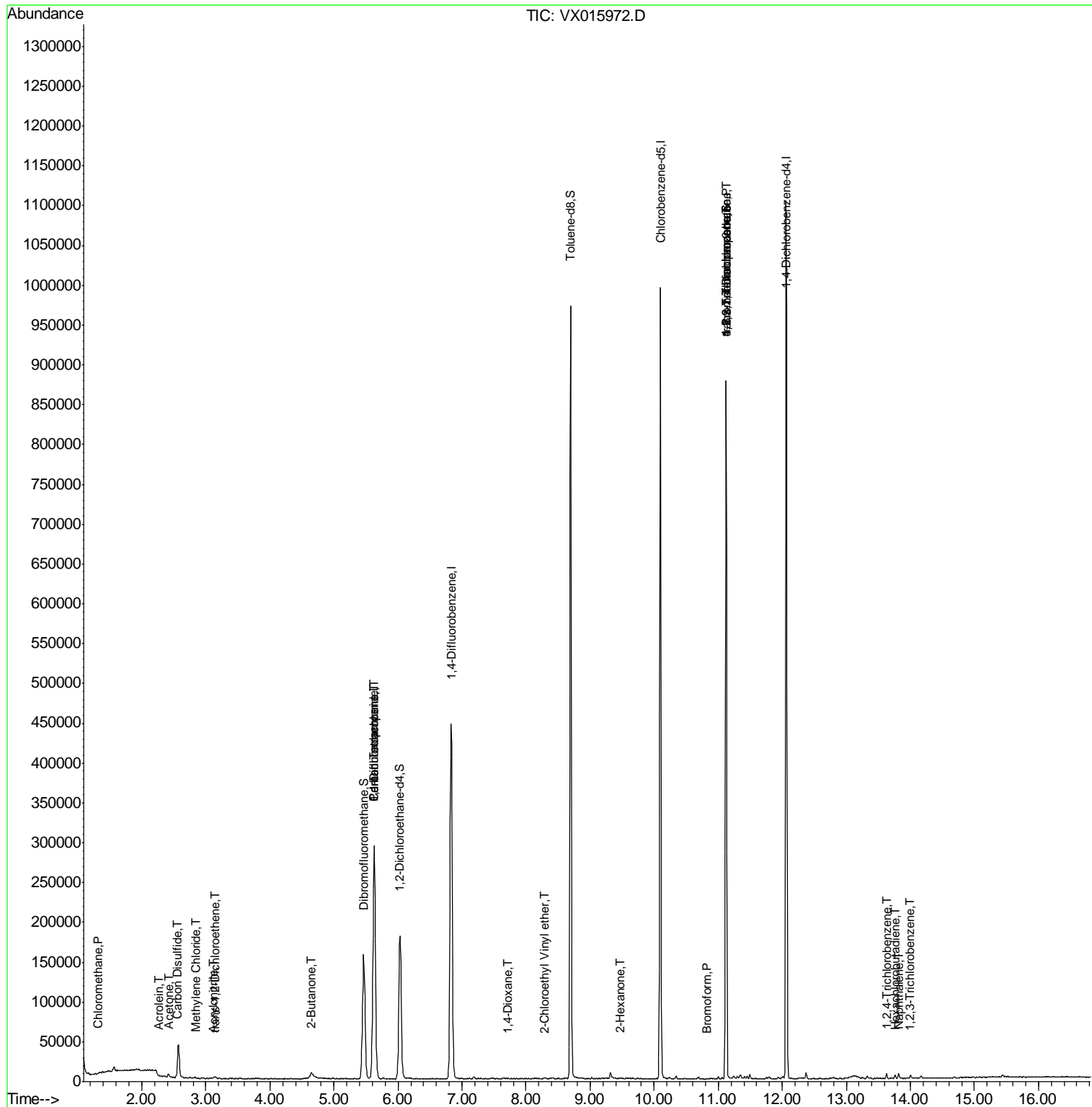
						Qvalue
3) Chloromethane	1.31	50	752	0.250	ug/l #	82
13) Acrolein	2.26	56	131	0.593	ug/l #	1
15) Acrylonitrile	3.12	53	1024	0.588	ug/l #	79
16) Acetone	2.42	43	4379	2.829	ug/l	99
17) Carbon Disulfide	2.55	76	4672	0.351	ug/l	98
20) Methylene Chloride	2.84	84	680	0.222	ug/l #	94
21) trans-1,2-Dichloroethene	3.15	96	751	0.252	ug/l	88
25) 2-Butanone	4.65	43	682	0.272	ug/l #	84
36) 1,1-Dichloropropene	5.63	75	21121	4.970	ug/l #	50
38) Carbon Tetrachloride	5.63	117	27309	6.084	ug/l #	15
49) 1,4-Dioxane	7.71	88	48	0.548	ug/l #	50
58) 2-Chloroethyl Vinyl ether	8.29	63	584	0.226	ug/l	92
59) 2-Hexanone	9.48	43	998	0.261	ug/l	98
71) Bromoform	10.84	173	128	2.705	ug/l #	29
75) 1,1,2,2-Tetrachloroethane	11.12	83	249	3.768	ug/l #	1
76) 1,2,3-Trichloropropane	11.12	75	113965	25.099	ug/l #	35
81) trans-1,4-Dichloro-2-buten	11.12	75	113965	59.313	ug/l #	10
93) 1,2,4-Trichlorobenzene	13.63	180	1261	0.254	ug/l	97
94) Hexachlorobutadiene	13.77	225	560	0.253	ug/l	97
95) Naphthalene	13.82	128	3147	0.201	ug/l	97
96) 1,2,3-Trichlorobenzene	14.00	180	1170	0.245	ug/l	85

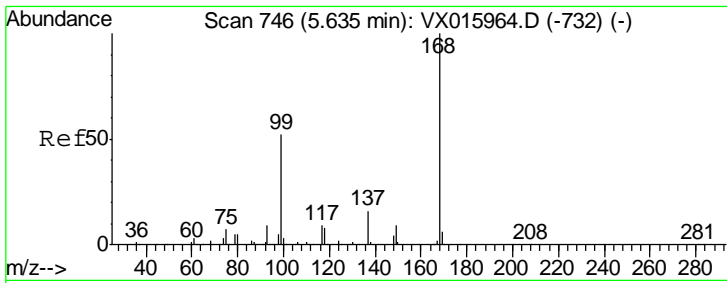
(#) = qualifier out of range (m) = manual integration (+) = signals summed

Data Path : Z:\VOASRV\HPCHEM1\MSVOA X\DATA\VX042920\
 Data File : VX015972.D
 Acq On : 29 Apr 2020 13:24
 Operator : JC/SP
 Sample : L2406-01
 Misc : 5.0mL/MSVOA X/WATER
 ALS Vial : 5 Sample Multiplier: 1

Instrument :
 MSVOA_X
 ClientSampled :

Quant Time: Apr 30 05:34:04 2020
 Quant Method : Z:\VOASRV\HPCHEM1\MSVOA_X\METHOD\82X042820W.M
 Quant Title : SW846 8260
 QLast Update : Tue Apr 28 17:30:11 2020
 Response via : Initial Calibration

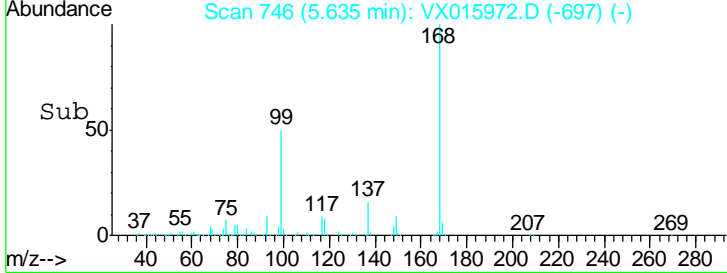
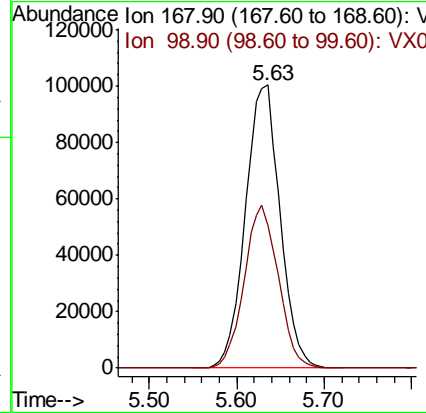
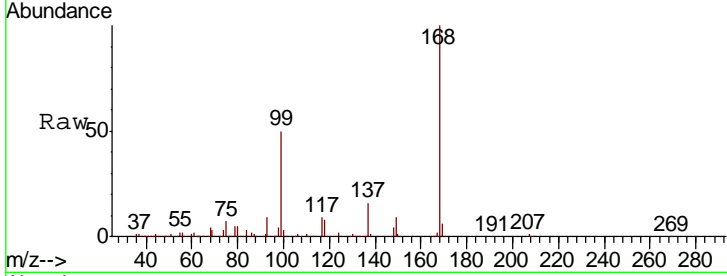




#1
 Pentafluorobenzene
 Concen: 50.000 ug/l
 RT: 5.63 min Scan# 746
 Delta R.T. -0.00 min
 Lab File: VX015972.D
 Acq: 29 Apr 2020 13:24

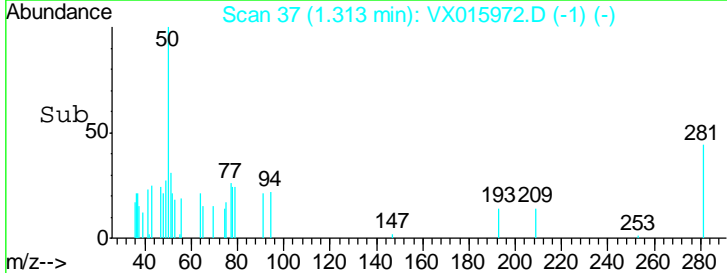
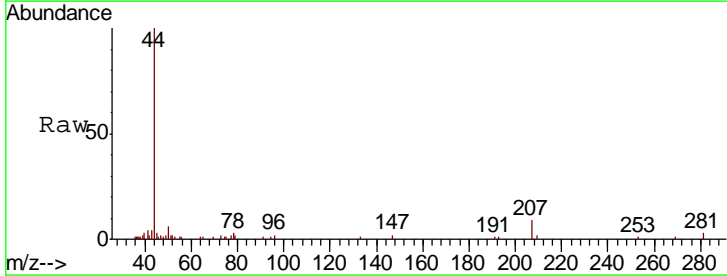
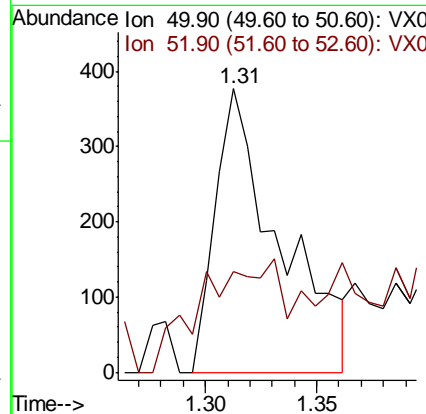
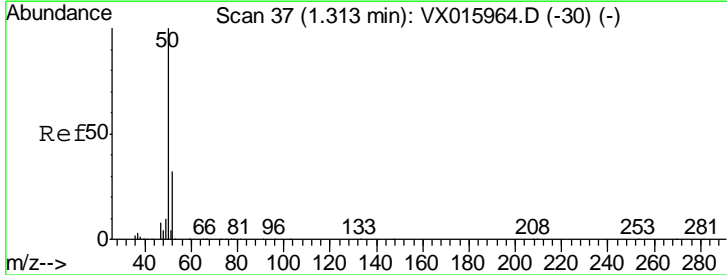
Instrument :
 MSVOA_X
 ClientSampled :

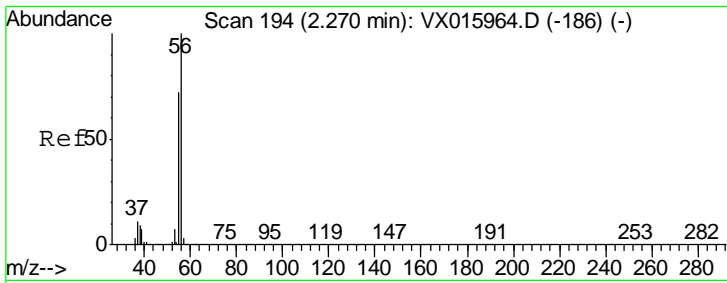
Tgt Ion: 168 Resp: 276871
 Ion Ratio Lower Upper
 168 100
 99 50.4 41.7 62.5



#3
 Chloromethane
 Concen: 0.250 ug/l
 RT: 1.31 min Scan# 37
 Delta R.T. -0.00 min
 Lab File: VX015972.D
 Acq: 29 Apr 2020 13:24

Tgt Ion: 50 Resp: 752
 Ion Ratio Lower Upper
 50 100
 52 22.0 25.5 38.3#

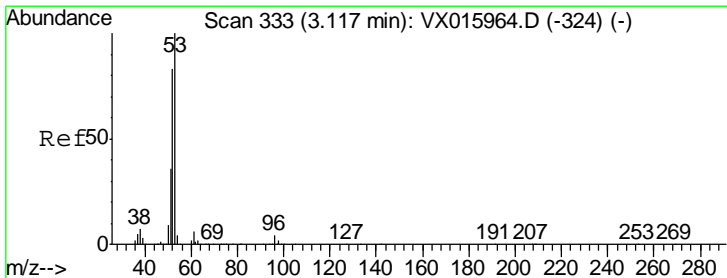
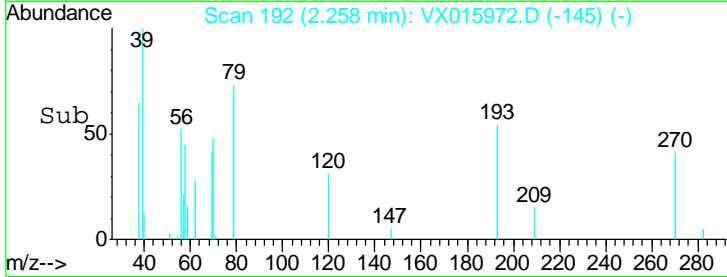
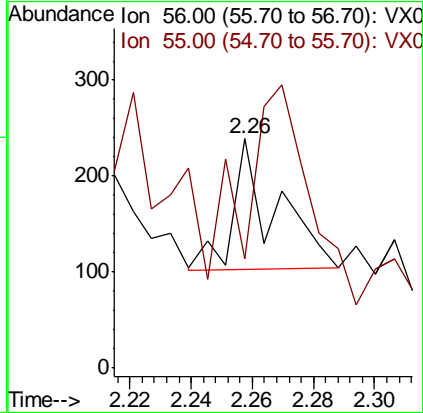
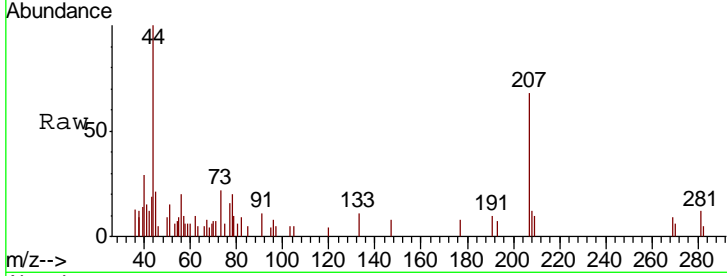




#13
 Acrolein
 Concen: 0.593 ug/l
 RT: 2.26 min Scan# 192
 Delta R.T. -0.01 min
 Lab File: VX015972.D
 Acq: 29 Apr 2020 13:24

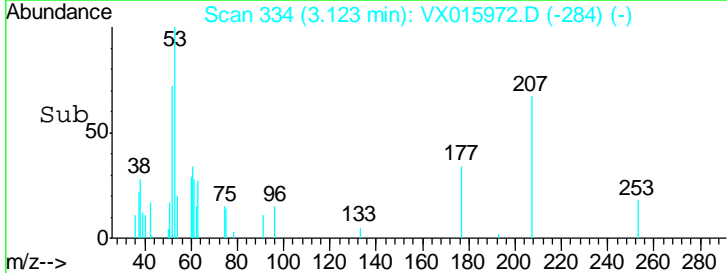
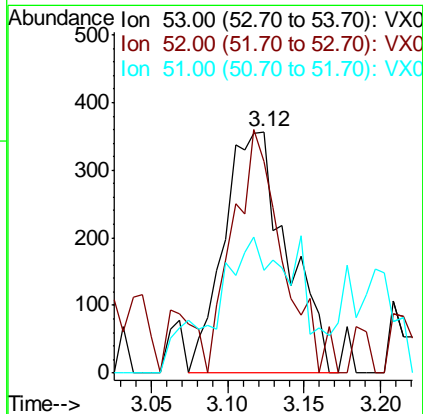
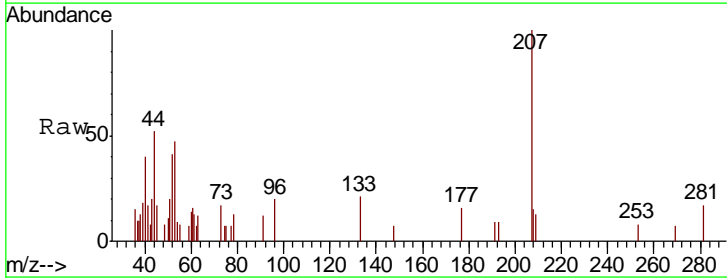
Instrument :
 MSVOA_X
 ClientSampled :

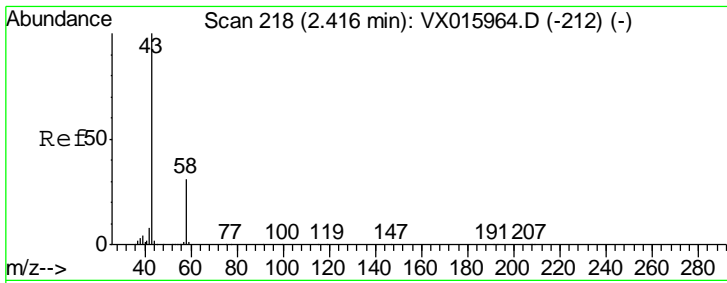
Tgt Ion: 56 Resp: 131
 Ion Ratio Lower Upper
 56 100
 55 255.7 56.9 85.3#



#15
 Acrylonitrile
 Concen: 0.588 ug/l
 RT: 3.12 min Scan# 334
 Delta R.T. 0.01 min
 Lab File: VX015972.D
 Acq: 29 Apr 2020 13:24

Tgt Ion: 53 Resp: 1024
 Ion Ratio Lower Upper
 53 100
 52 79.0 65.5 98.3
 51 0.0 28.7 43.1#

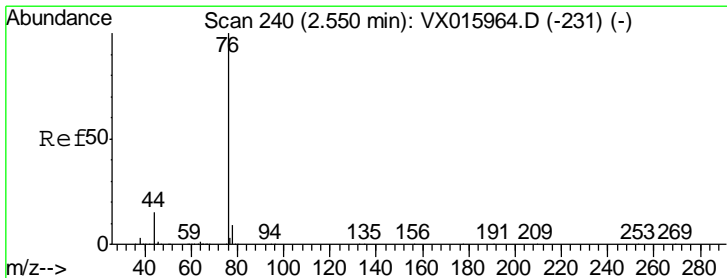
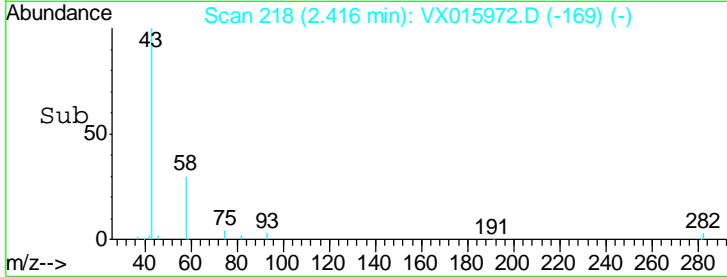
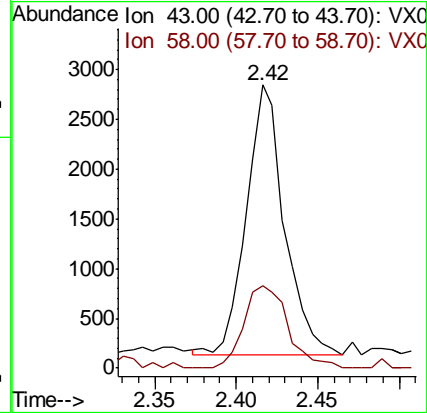
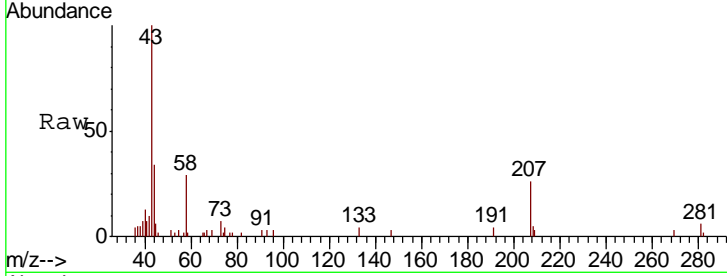




#16
 Acetone
 Concen: 2.829 ug/l
 RT: 2.42 min Scan# 218
 Delta R.T. -0.00 min
 Lab File: VX015972.D
 Acq: 29 Apr 2020 13:24

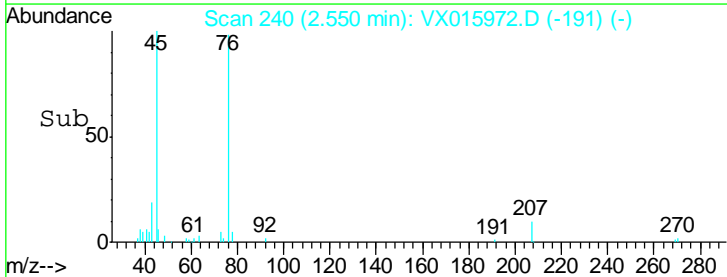
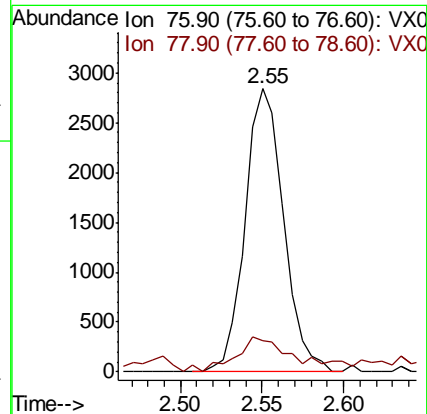
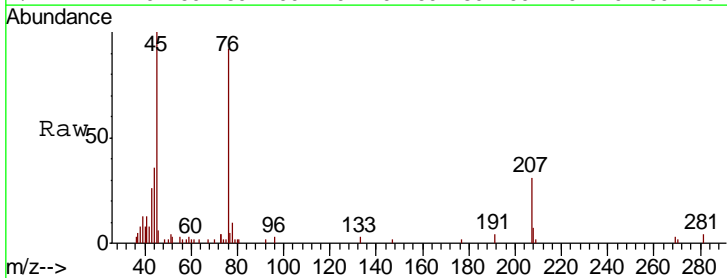
Instrument :
 MSVOA_X
 ClientSampled :

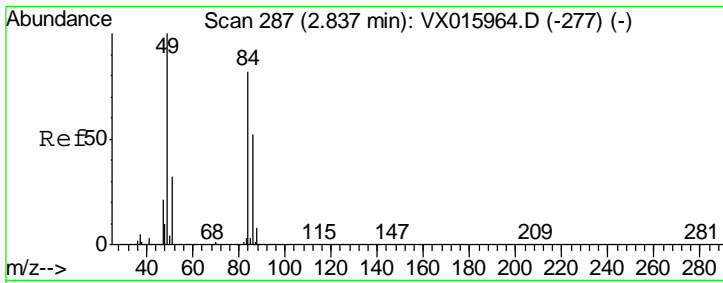
Tgt Ion	Ratio	Lower	Upper
43	100		
58	30.6	25.1	37.7



#17
 Carbon Disulfide
 Concen: 0.351 ug/l
 RT: 2.55 min Scan# 240
 Delta R.T. 0.00 min
 Lab File: VX015972.D
 Acq: 29 Apr 2020 13:24

Tgt Ion	Ratio	Lower	Upper
76	100		
78	8.4	7.4	11.0

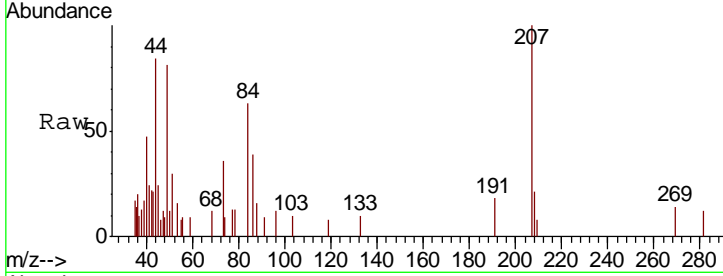




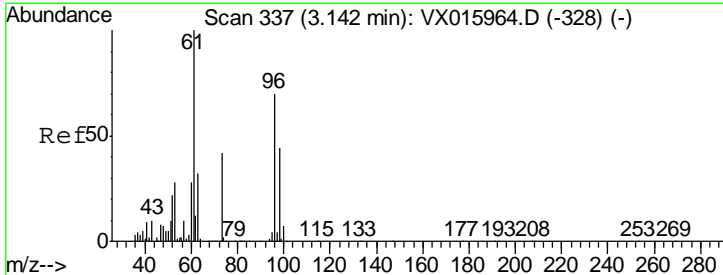
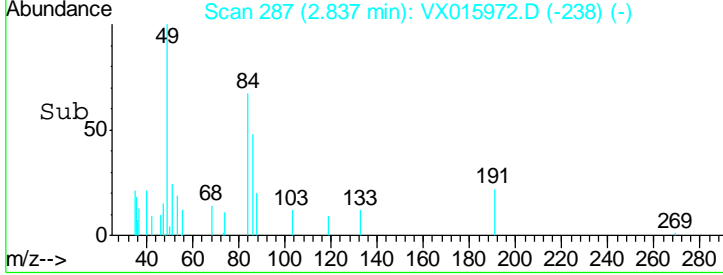
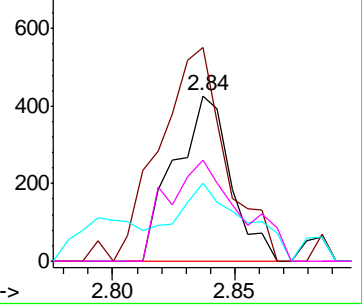
#20
 Methylene Chloride
 Concen: 0.222 ug/l
 RT: 2.84 min Scan# 287
 Delta R.T. -0.00 min
 Lab File: VX015972.D
 Acq: 29 Apr 2020 13:24

Instrument :
 MSVOA_X
 ClientSampled :

Tgt Ion	Resp	Lower	Upper
84	100		
49	129.3	97.9	146.9
51	30.8	31.2	46.8#
86	61.5	50.7	76.1

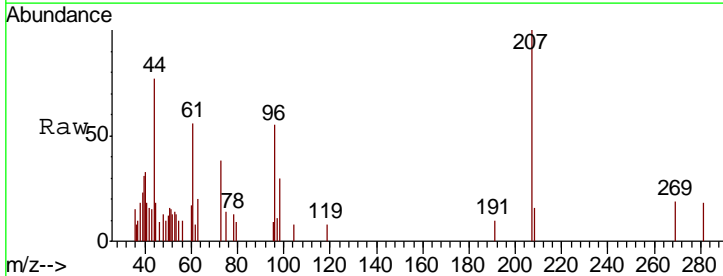


Abundance
 Ion 83.90 (83.60 to 84.60): VX0
 Ion 48.90 (48.60 to 49.60): VX0
 Ion 50.90 (50.60 to 51.60): VX0
 Ion 85.90 (85.60 to 86.60): VX0

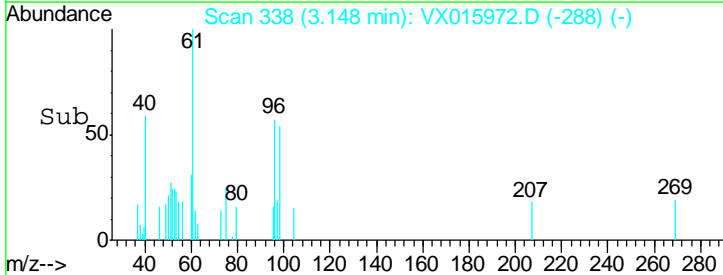
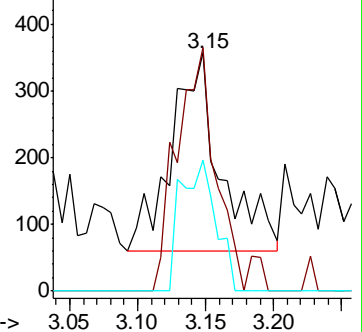


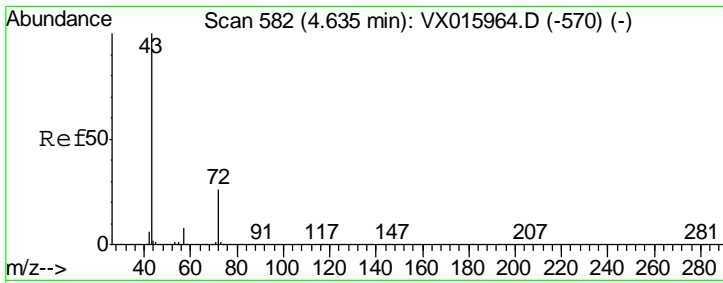
#21
 trans-1,2-Dichloroethene
 Concen: 0.252 ug/l
 RT: 3.15 min Scan# 338
 Delta R.T. 0.01 min
 Lab File: VX015972.D
 Acq: 29 Apr 2020 13:24

Tgt Ion	Resp	Lower	Upper
96	100		
61	122.9	113.6	170.4
98	66.0	50.3	75.5



Abundance
 Ion 95.90 (95.60 to 96.60): VX0
 Ion 60.90 (60.60 to 61.60): VX0
 Ion 97.90 (97.60 to 98.60): VX0

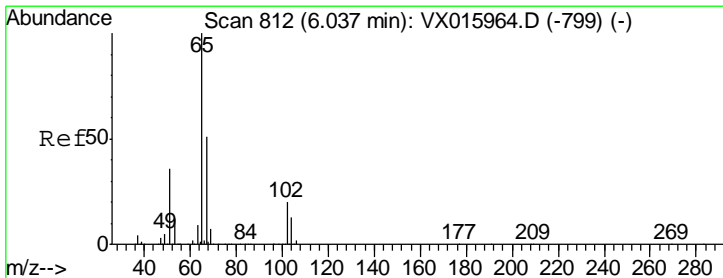
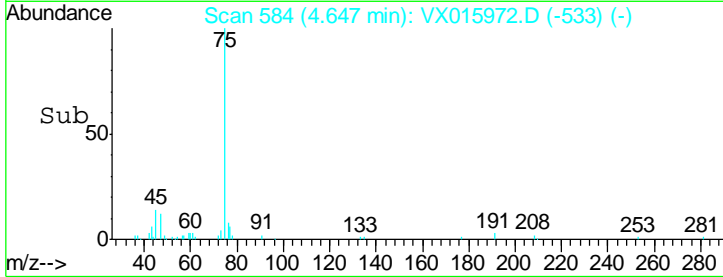
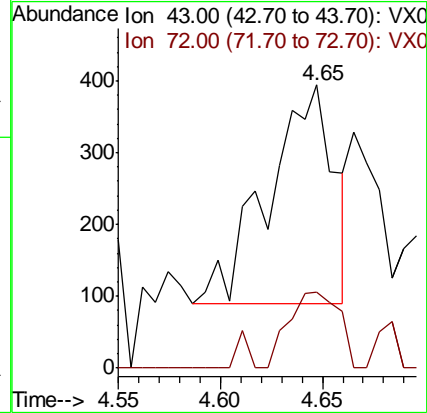
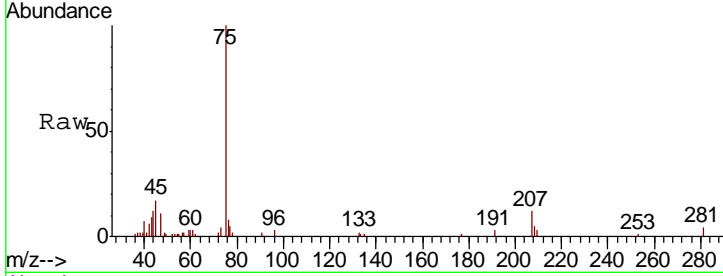




#25
 2-Butanone
 Concen: 0.272 ug/l
 RT: 4.65 min Scan# 584
 Delta R.T. 0.01 min
 Lab File: VX015972.D
 Acq: 29 Apr 2020 13:24

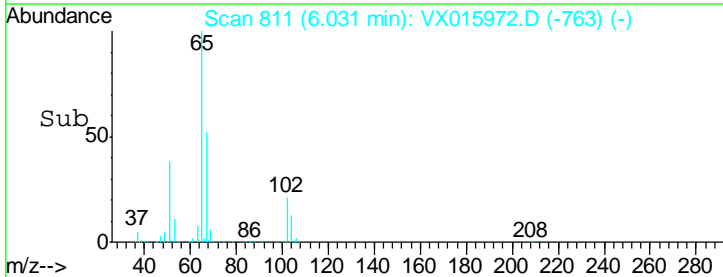
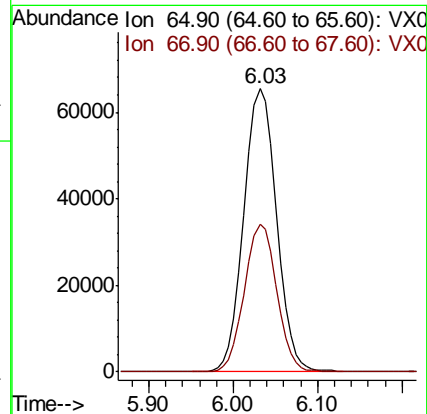
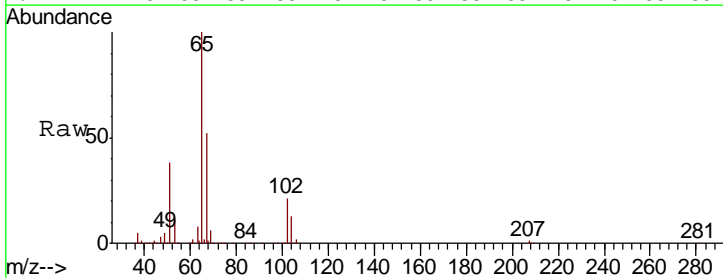
Instrument :
 MSVOA_X
 ClientSampled :

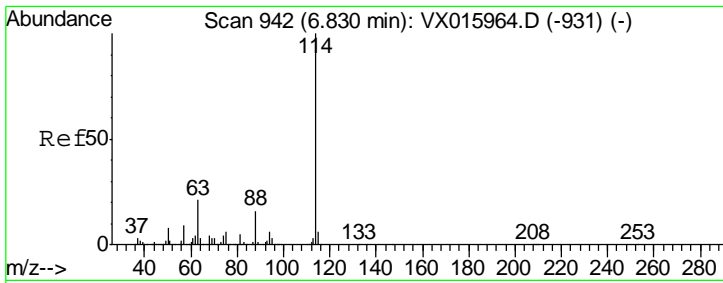
Tgt Ion: 43 Resp: 682
 Ion Ratio Lower Upper
 43 100
 72 34.5 21.0 31.4#



#33
 1,2-Dichloroethane-d4
 Concen: 47.629 ug/l
 RT: 6.03 min Scan# 811
 Delta R.T. -0.01 min
 Lab File: VX015972.D
 Acq: 29 Apr 2020 13:24

Tgt Ion: 65 Resp: 172418
 Ion Ratio Lower Upper
 65 100
 67 51.5 0.0 102.4

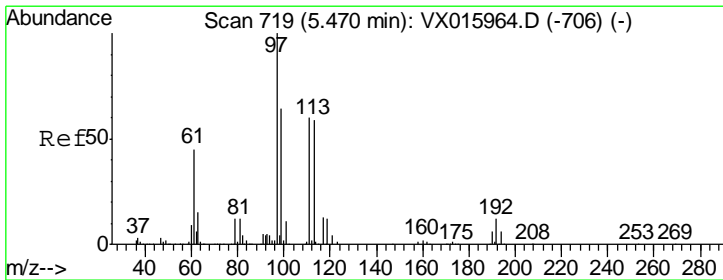
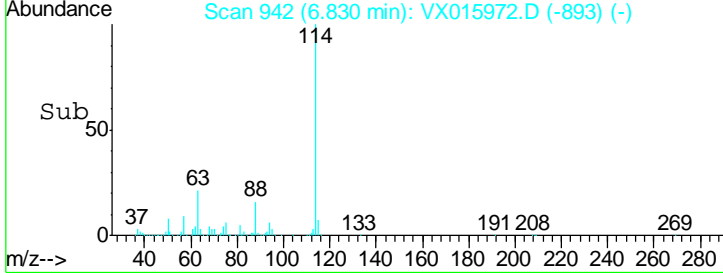
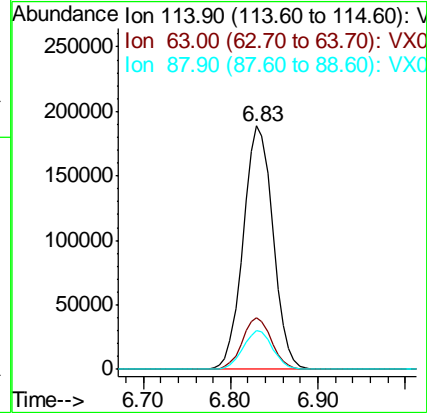
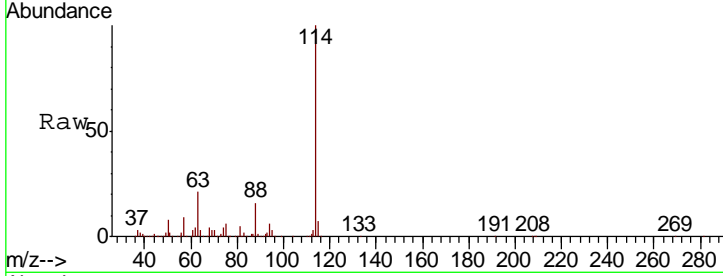




#34
 1,4-Difluorobenzene
 Concen: 50.000 ug/l
 RT: 6.83 min Scan# 942
 Delta R.T. -0.00 min
 Lab File: VX015972.D
 Acq: 29 Apr 2020 13:24

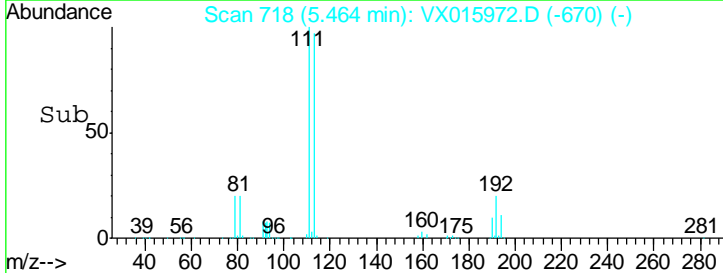
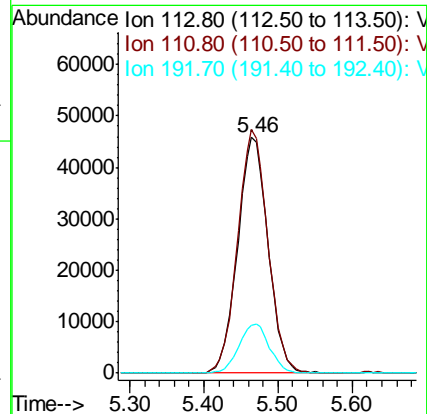
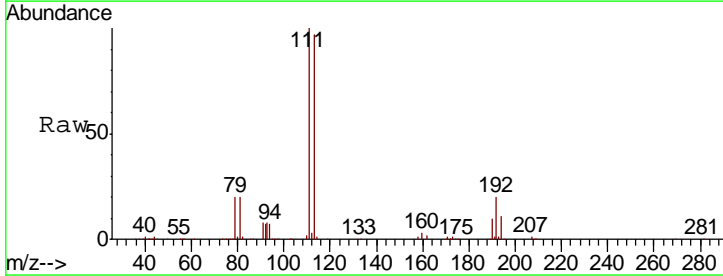
Instrument :
 MSVOA_X
 ClientSampled :

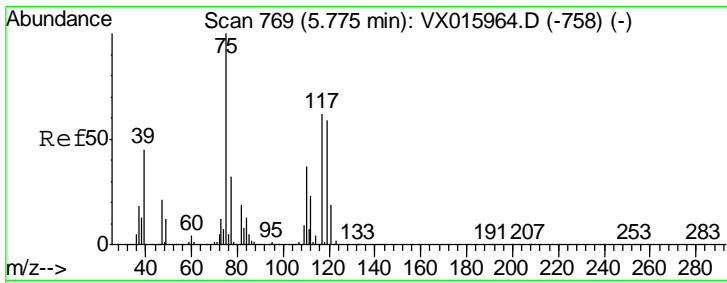
Tgt Ion	Resp	Lower	Upper
114	100		
63	21.0	0.0	41.2
88	15.7	0.0	31.8



#35
 Dibromofluoromethane
 Concen: 47.287 ug/l
 RT: 5.46 min Scan# 718
 Delta R.T. -0.01 min
 Lab File: VX015972.D
 Acq: 29 Apr 2020 13:24

Tgt Ion	Resp	Lower	Upper
113	100		
111	102.1	81.8	122.8
192	20.9	16.8	25.2

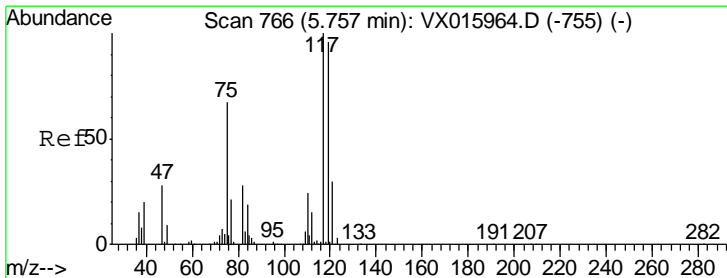
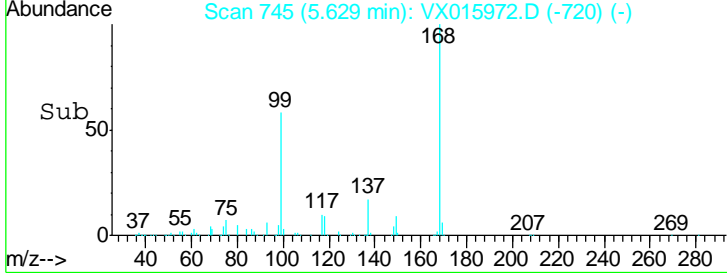
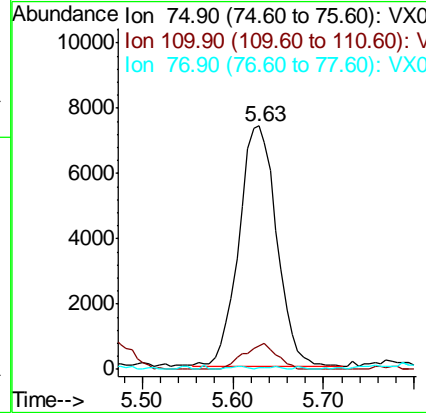
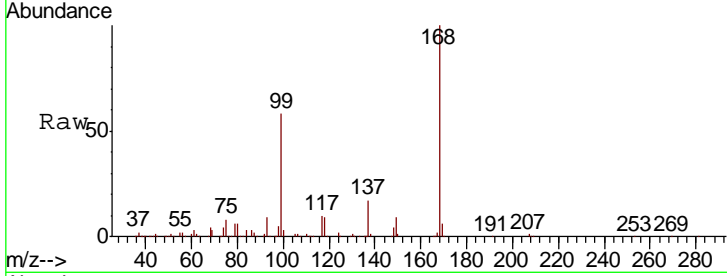




#36
 1,1-Dichloropropene
 Concen: 4.970 ug/l
 RT: 5.63 min Scan# 745
 Delta R.T. -0.15 min
 Lab File: VX015972.D
 Acq: 29 Apr 2020 13:24

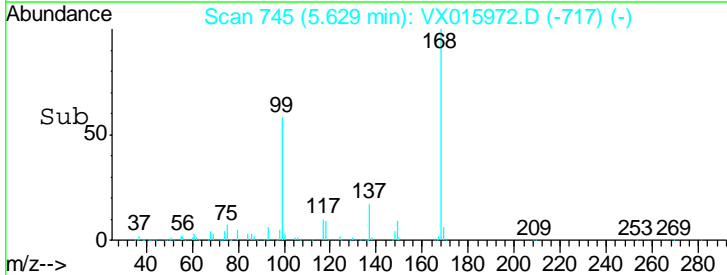
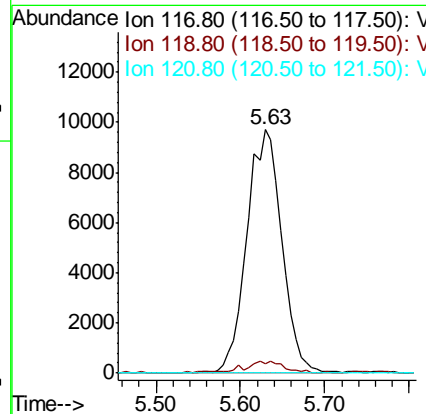
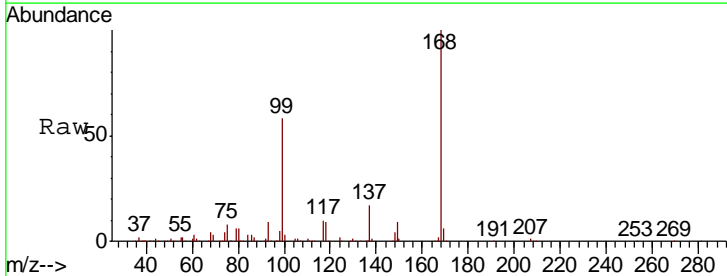
Instrument :
 MSVOA_X
 ClientSampled :

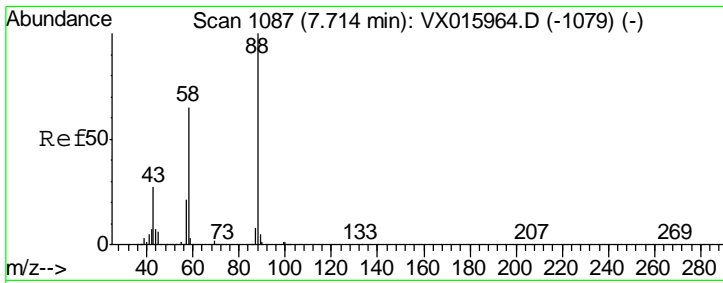
Tgt Ion	Resp	Lower	Upper
75	100		
110	9.5	17.9	53.7#
77	0.5	25.2	37.8#



#38
 Carbon Tetrachloride
 Concen: 6.084 ug/l
 RT: 5.63 min Scan# 745
 Delta R.T. -0.13 min
 Lab File: VX015972.D
 Acq: 29 Apr 2020 13:24

Tgt Ion	Resp	Lower	Upper
117	100		
119	3.9	76.2	114.4#
121	0.0	24.2	36.4#

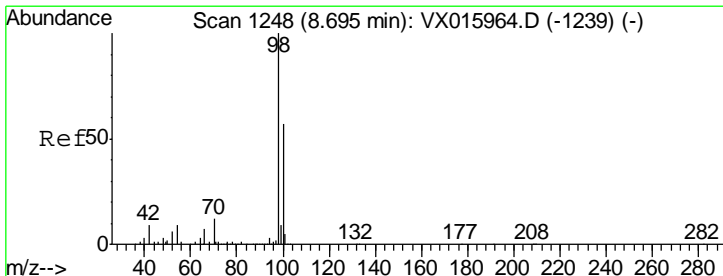
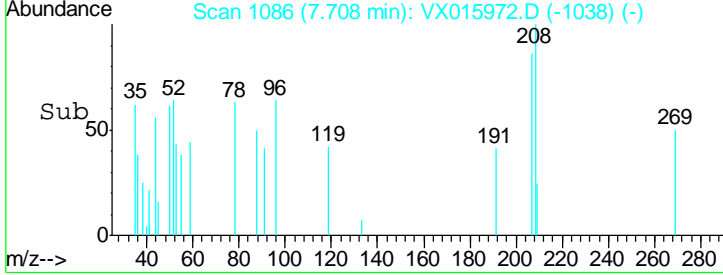
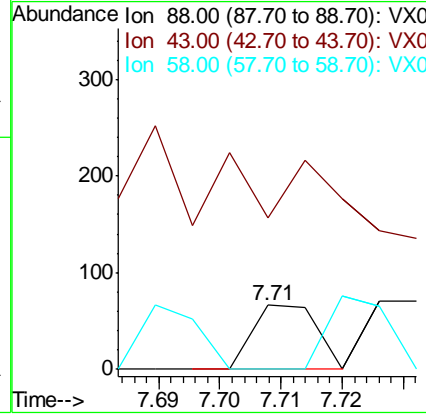
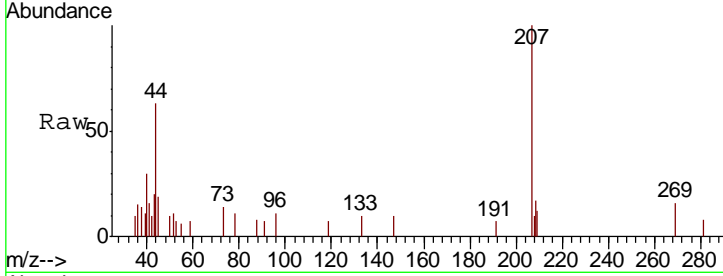




#49
 1,4-Dioxane
 Concen: 0.548 ug/l
 RT: 7.71 min Scan# 1086
 Delta R.T. -0.01 min
 Lab File: VX015972.D
 Acq: 29 Apr 2020 13:24

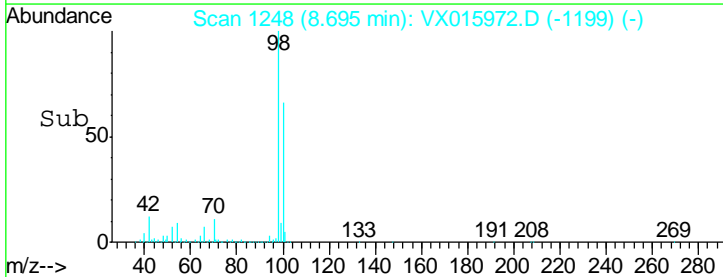
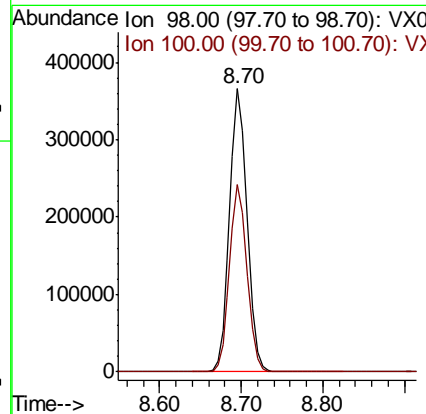
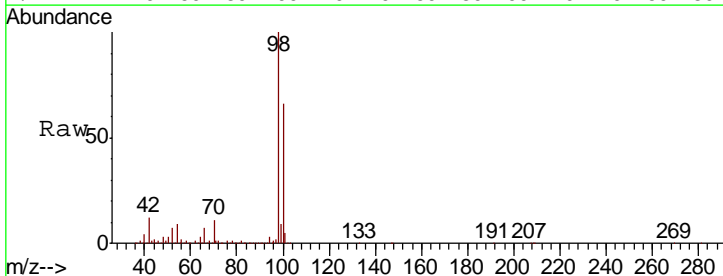
Instrument :
 MSVOA_X
 ClientSampled :

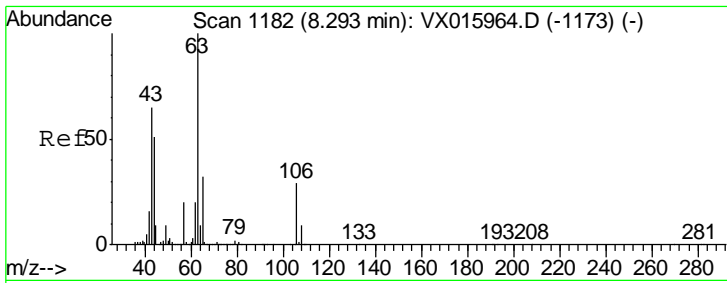
Tgt Ion	Resp	Lower	Upper
88	100		
43	0.0	26.6	39.8#
58	106.3	54.8	82.2#



#50
 Toluene-d8
 Concen: 52.133 ug/l
 RT: 8.70 min Scan# 1248
 Delta R.T. -0.00 min
 Lab File: VX015972.D
 Acq: 29 Apr 2020 13:24

Tgt Ion	Resp	Lower	Upper
98	100		
100	66.1	53.1	79.7

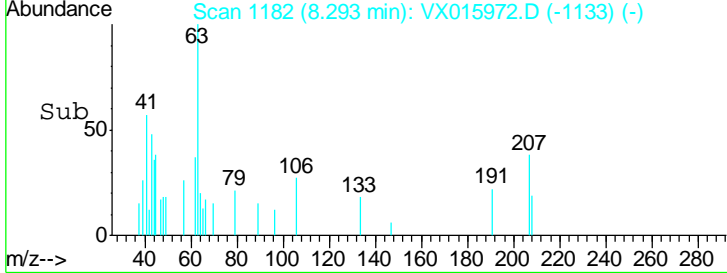
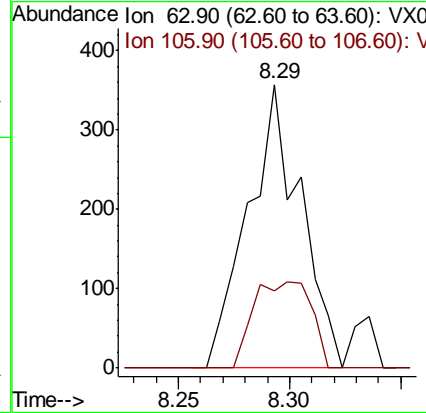
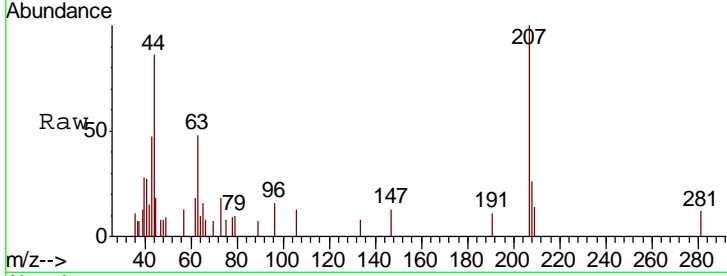




#58
 2-Chloroethyl Vinyl ether
 Concen: 0.226 ug/l
 RT: 8.29 min Scan# 1182
 Delta R.T. -0.00 min
 Lab File: VX015972.D
 Acq: 29 Apr 2020 13:24

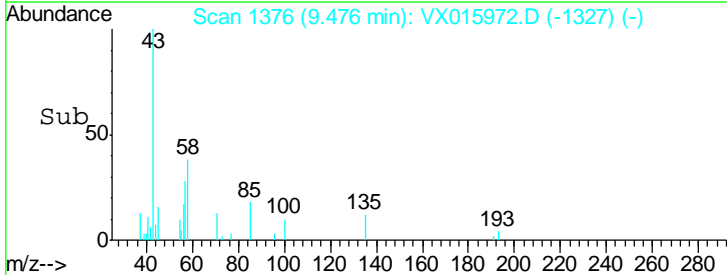
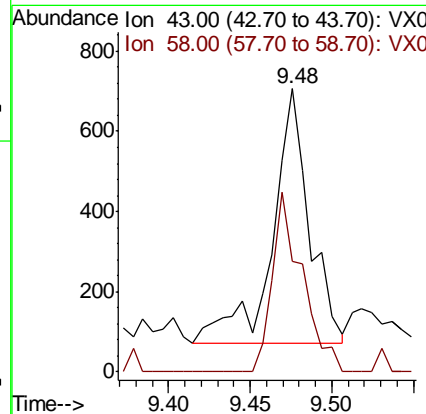
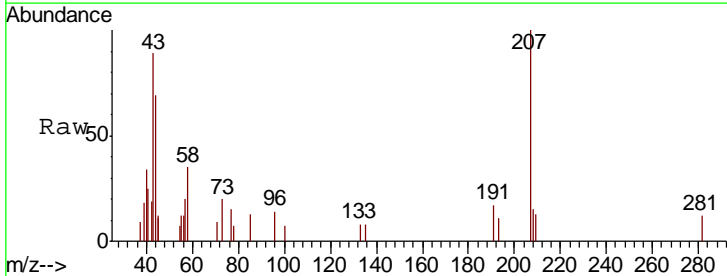
Instrument :
 MSVOA_X
 ClientSampled :

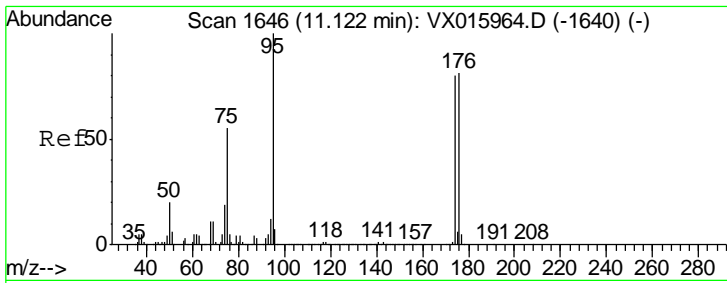
Tgt Ion	Resp	Lower	Upper
63	100		
106	33.7	23.6	35.4



#59
 2-Hexanone
 Concen: 0.261 ug/l
 RT: 9.48 min Scan# 1376
 Delta R.T. -0.00 min
 Lab File: VX015972.D
 Acq: 29 Apr 2020 13:24

Tgt Ion	Resp	Lower	Upper
43	100		
58	57.0	27.7	83.1

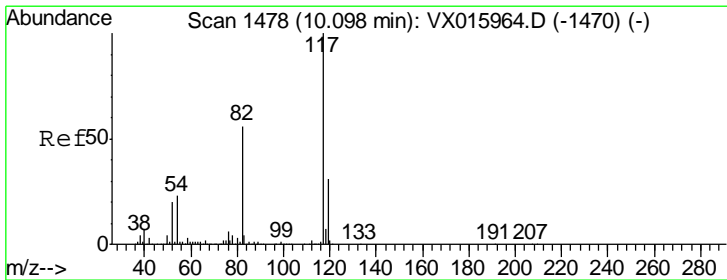
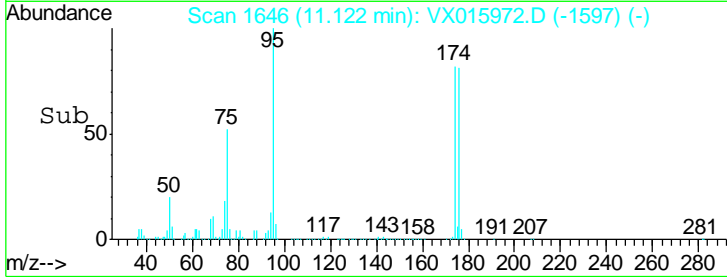
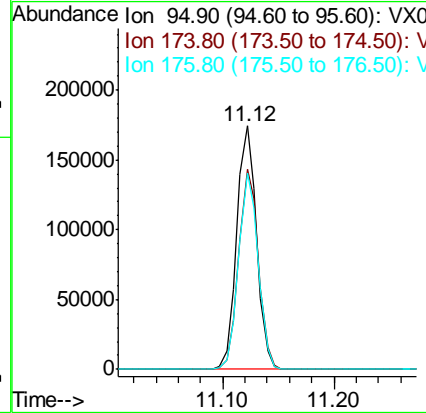
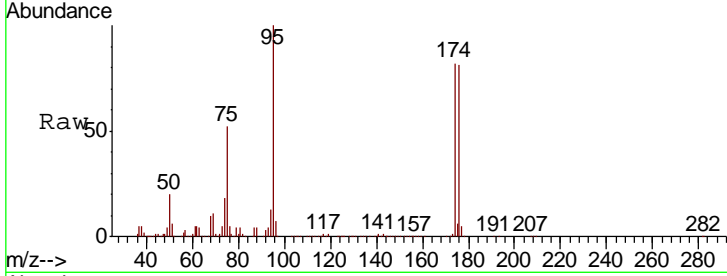




#62
 4-Bromofluorobenzene
 Concen: 52.357 ug/l
 RT: 11.12 min Scan# 1646
 Delta R.T. -0.00 min
 Lab File: VX015972.D
 Acq: 29 Apr 2020 13:24

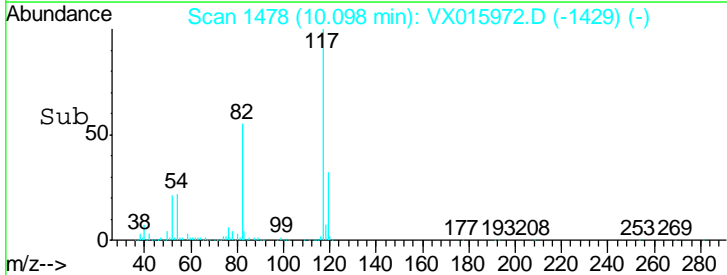
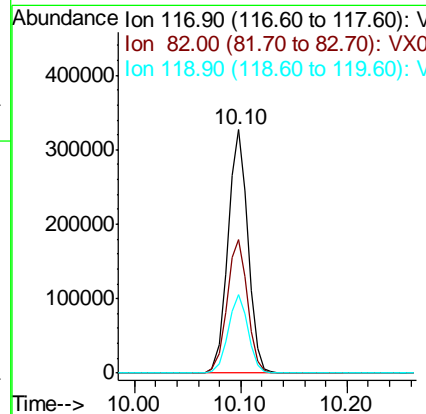
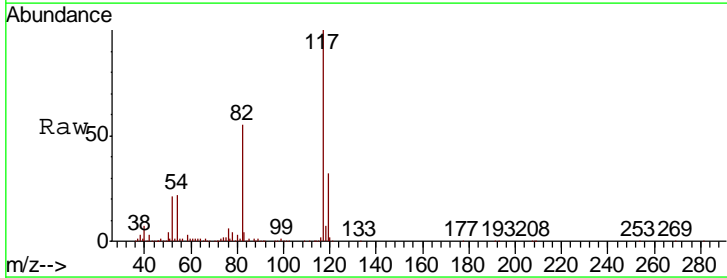
Instrument :
 MSVOA_X
 ClientSampled :

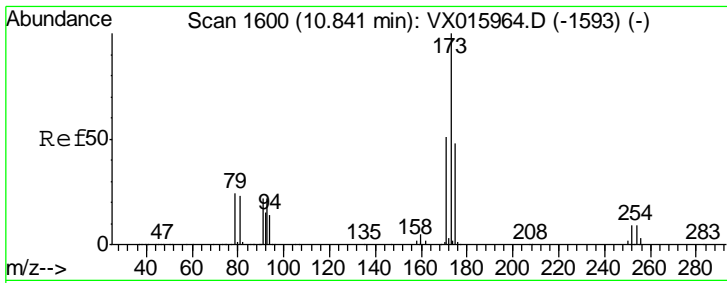
Tgt Ion	Resp	Lower	Upper
95	213702		
174	82.2	0.0	165.0
176	80.0	0.0	163.2



#63
 Chlorobenzene-d5
 Concen: 50.000 ug/l
 RT: 10.10 min Scan# 1478
 Delta R.T. -0.00 min
 Lab File: VX015972.D
 Acq: 29 Apr 2020 13:24

Tgt Ion	Resp	Lower	Upper
117	428826		
82	54.8	44.5	66.7
119	32.0	25.0	37.6

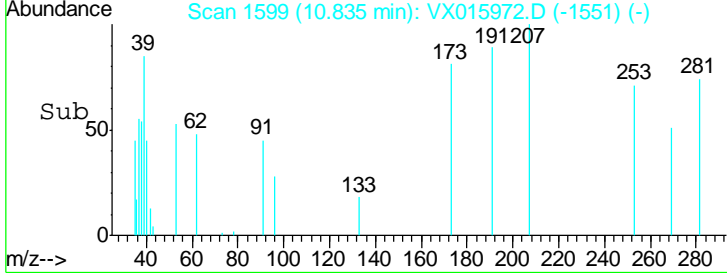
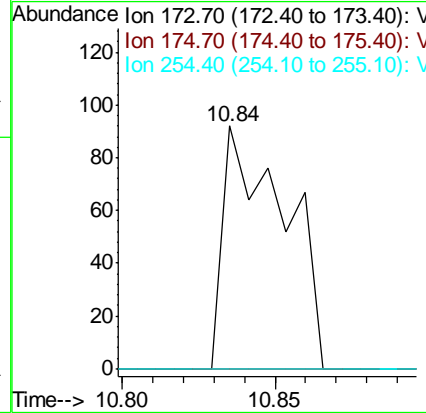
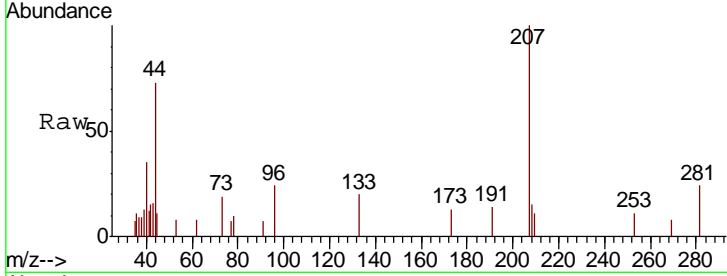




#71
 Bromoform
 Concen: 2.705 ug/l
 RT: 10.84 min Scan# 1599
 Delta R.T. -0.01 min
 Lab File: VX015972.D
 Acq: 29 Apr 2020 13:24

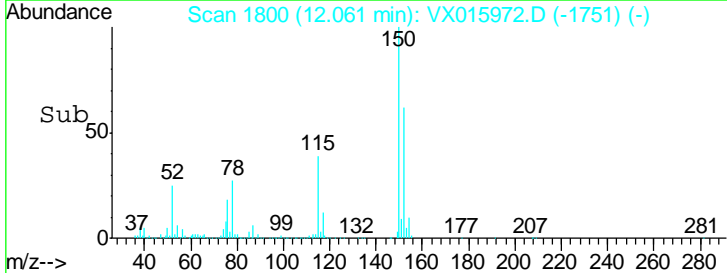
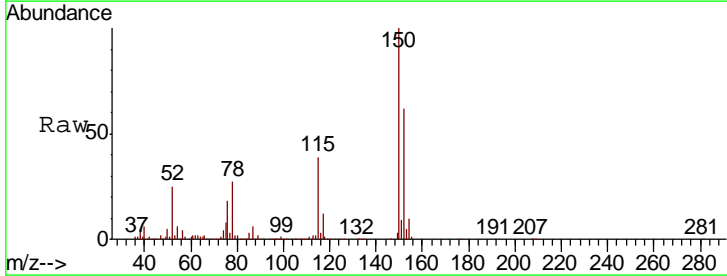
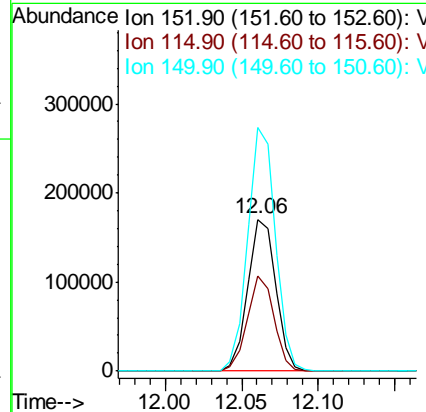
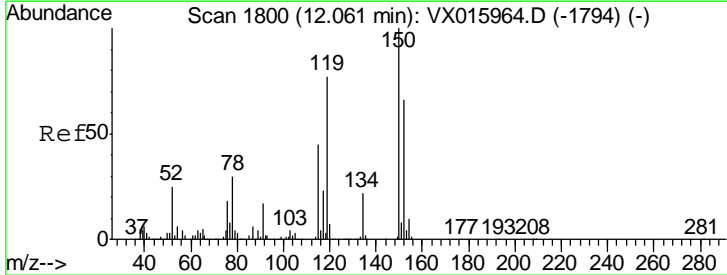
Instrument : MSVOA_X
 ClientSampled :

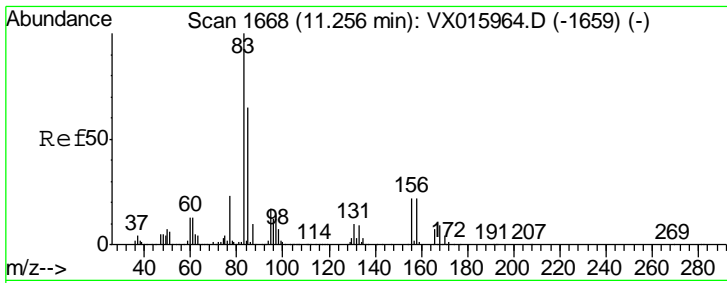
Tgt Ion	Resp	Lower	Upper
173	128		
175	0.0	24.1	72.4#
254	0.0	0.1	0.1#



#72
 1,4-Dichlorobenzene-d4
 Concen: 50.000 ug/l
 RT: 12.06 min Scan# 1800
 Delta R.T. -0.00 min
 Lab File: VX015972.D
 Acq: 29 Apr 2020 13:24

Tgt Ion	Resp	Lower	Upper
152	216391		
152	100		
115	59.9	40.9	122.7
150	158.5	0.0	342.4

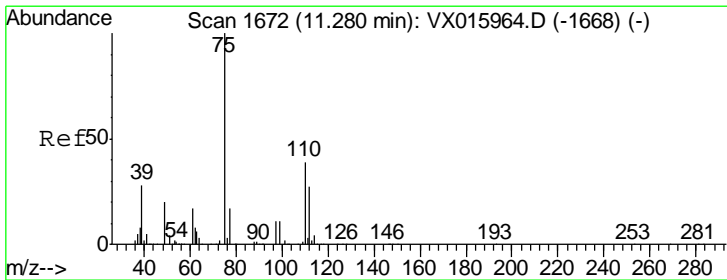
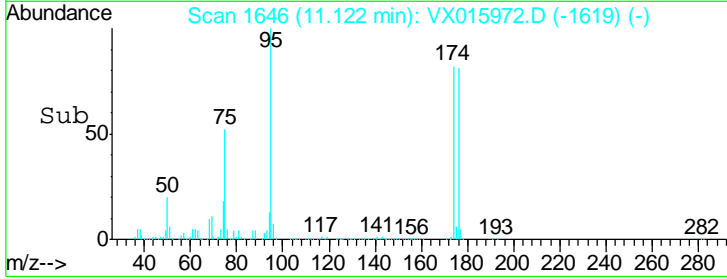
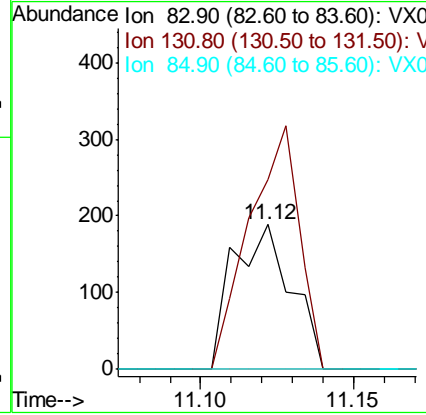
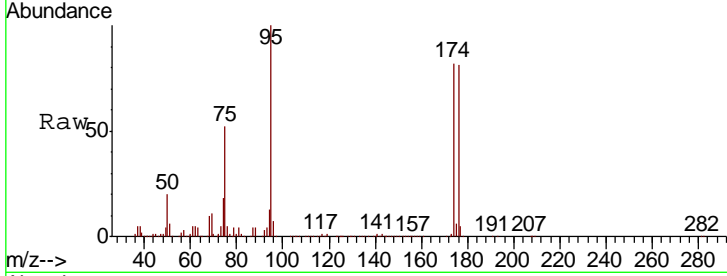




#75
 1,1,2,2-Tetrachloroethane
 Concen: 3.768 ug/l
 RT: 11.12 min Scan# 1646
 Delta R.T. -0.13 min
 Lab File: VX015972.D
 Acq: 29 Apr 2020 13:24

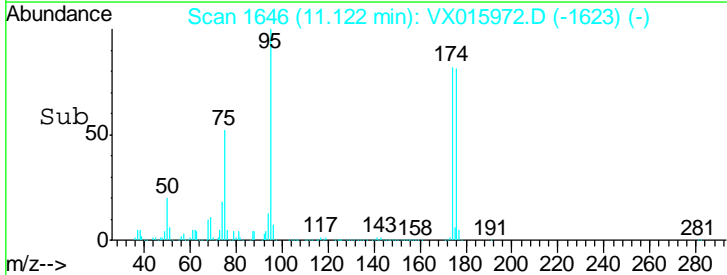
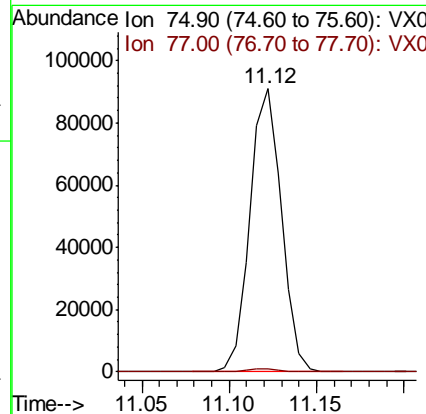
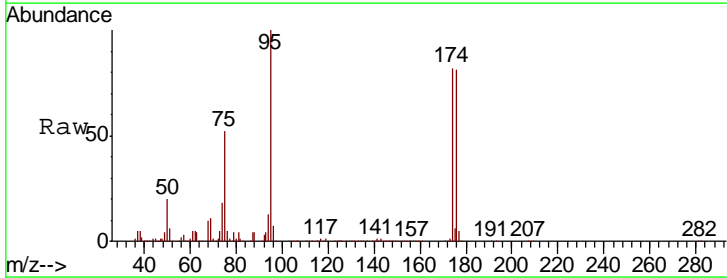
Instrument :
 MSVOA_X
 ClientSampled :

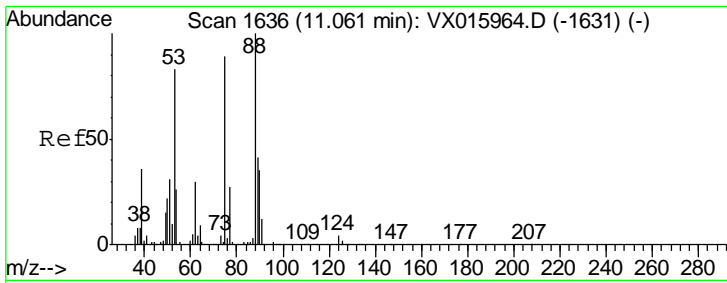
Tgt Ion	Resp	Lower	Upper
83	100		
131	145.0	5.1	15.4#
85	0.0	32.2	96.6#



#76
 1,2,3-Trichloropropane
 Concen: 25.099 ug/l
 RT: 11.12 min Scan# 1646
 Delta R.T. -0.16 min
 Lab File: VX015972.D
 Acq: 29 Apr 2020 13:24

Tgt Ion	Resp	Lower	Upper
75	100		
77	1.5	21.6	65.0#

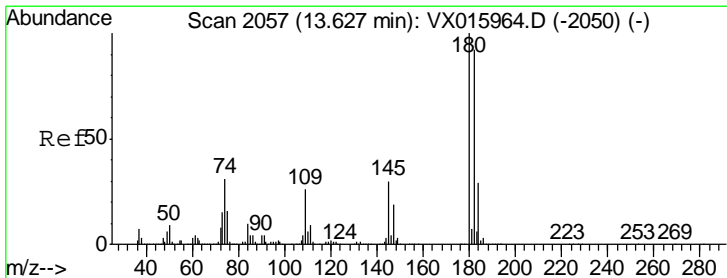
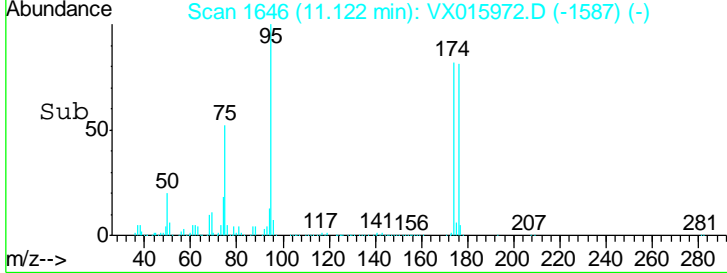
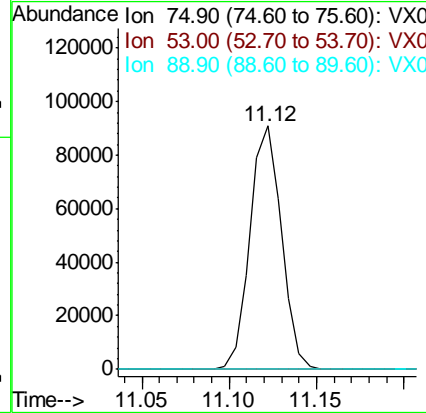
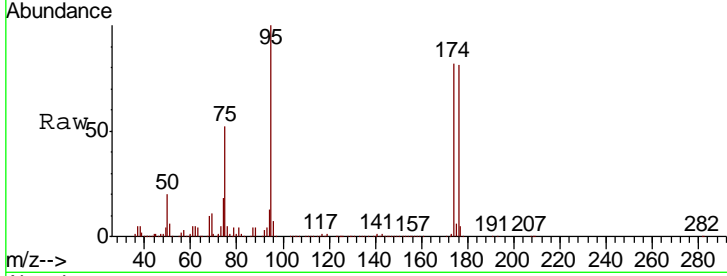




#81
 trans-1,4-Dichloro-2-butene
 Concen: 59.313 ug/l
 RT: 11.12 min Scan# 1646
 Delta R.T. 0.06 min
 Lab File: VX015972.D
 Acq: 29 Apr 2020 13:24

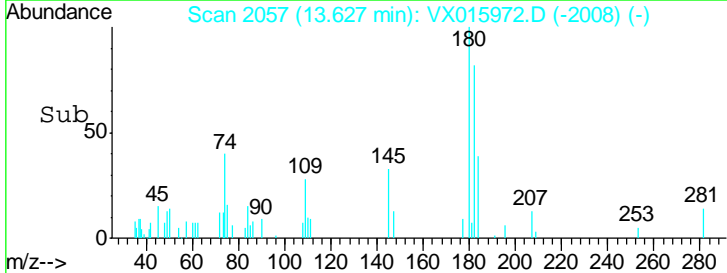
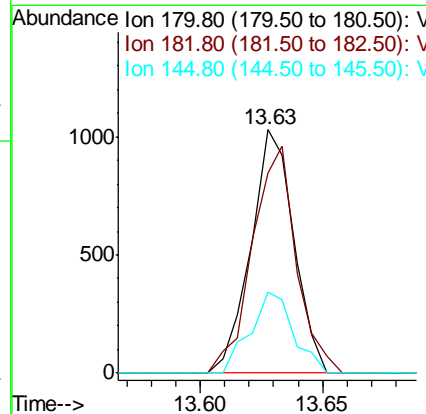
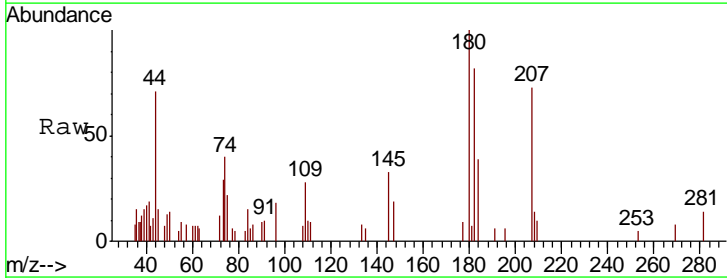
Instrument : MSVOA_X
 ClientSampled :

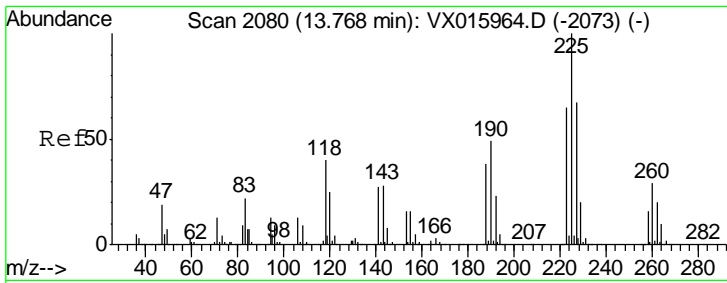
Tgt Ion	Resp	Lower	Upper
75	100		
53	0.1	78.3	117.5#
89	0.0	37.2	55.8#



#93
 1,2,4-Trichlorobenzene
 Concen: 0.254 ug/l
 RT: 13.63 min Scan# 2057
 Delta R.T. -0.00 min
 Lab File: VX015972.D
 Acq: 29 Apr 2020 13:24

Tgt Ion	Resp	Lower	Upper
180	100		
182	95.2	46.9	140.6
145	33.5	14.7	44.1

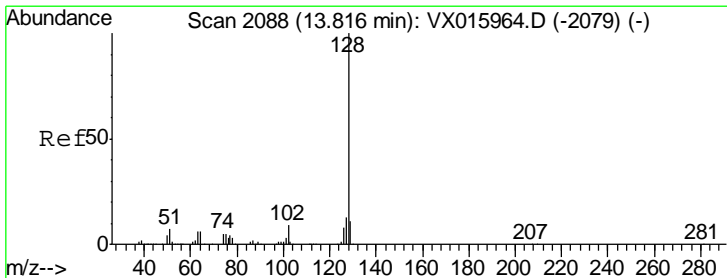
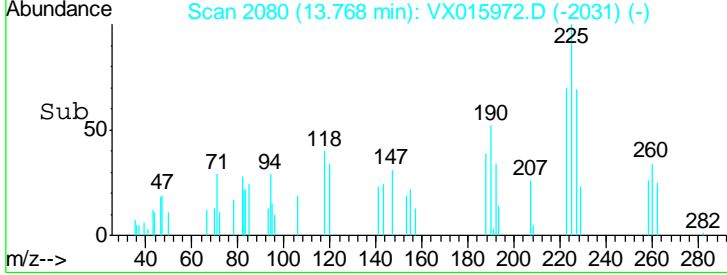
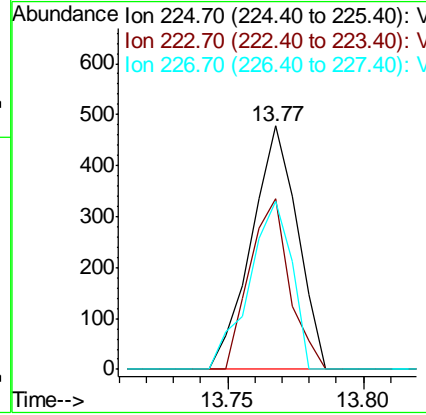
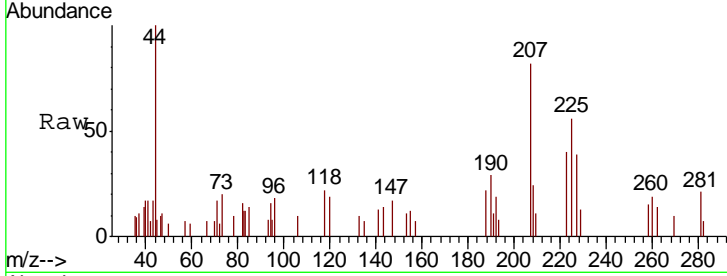




#94
 Hexachlorobutadiene
 Concen: 0.253 ug/l
 RT: 13.77 min Scan# 2080
 Delta R.T. -0.00 min
 Lab File: VX015972.D
 Acq: 29 Apr 2020 13:24

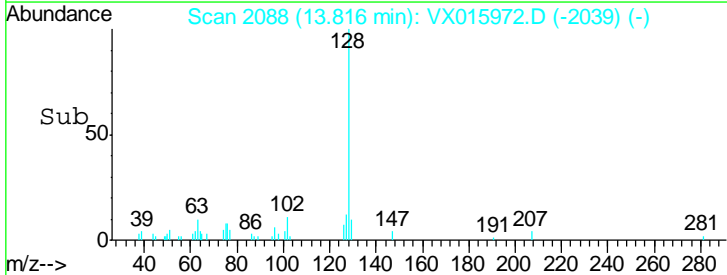
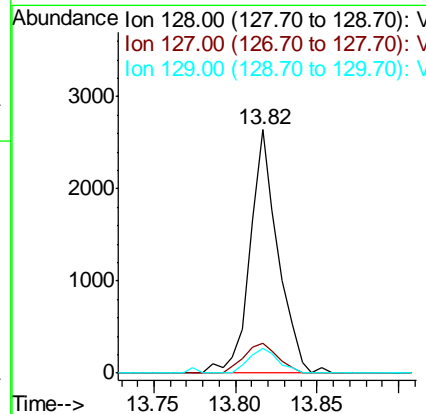
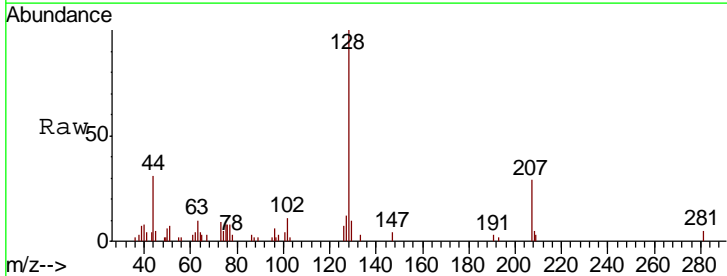
Instrument : MSVOA_X
 Client Sampled :

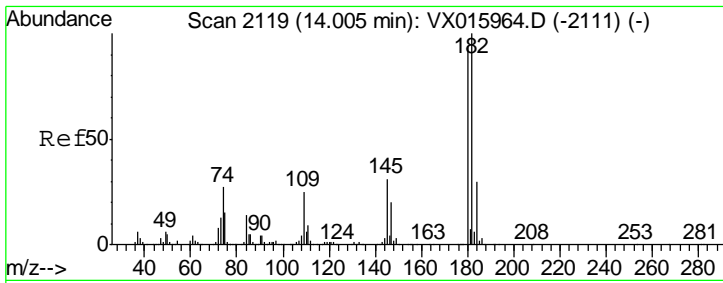
Tgt Ion	Resp	Lower	Upper
225	560		
223	61.1	32.0	96.0
227	63.9	33.0	99.0



#95
 Naphthalene
 Concen: 0.201 ug/l
 RT: 13.82 min Scan# 2088
 Delta R.T. -0.00 min
 Lab File: VX015972.D
 Acq: 29 Apr 2020 13:24

Tgt Ion	Resp	Lower	Upper
128	3147		
127	14.6	10.4	15.6
129	10.6	8.7	13.1



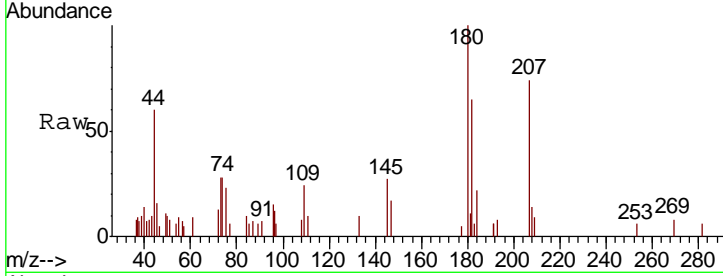


#96
 1,2,3-Trichlorobenzene
 Concen: 0.245 ug/l
 RT: 14.00 min Scan# 2118
 Delta R.T. -0.01 min
 Lab File: VX015972.D
 Acq: 29 Apr 2020 13:24

Instrument : MSVOA_X
 ClientSampled :

Tot Ion:180 Resp: 1170

Ion	Ratio	Lower	Upper
180	100		
182	80.1	48.7	146.1
145	29.0	16.1	48.3



Abundance Ion 179.80 (179.50 to 180.50): V
 Ion 181.80 (181.50 to 182.50): V
 Ion 144.90 (144.60 to 145.60): V

