

Data Path : Z:\voasrv\HPCHEM1\MSVOA\_X\Data\VX042922\  
 Data File : VX028422.D  
 Acq On : 29 Apr 2022 14:39  
 Operator : JC/MD  
 Sample : N2563-01  
 Misc : 5.0mL/MSVOA\_X/WATER  
 ALS Vial : 12 Sample Multiplier: 1

Instrument :  
 MSVOA\_X  
 ClientSampleId :  
 STORM-WATER-042622

Quant Time: Apr 30 08:16:40 2022  
 Quant Method : Z:\voasrv\HPCHEM1\MSVOA\_X\Method\624X042822W.M  
 Quant Title : METHOD 624 VOLATILE ORGANIC ANALYSIS  
 QLast Update : Fri Apr 29 06:09:36 2022  
 Response via : Initial Calibration

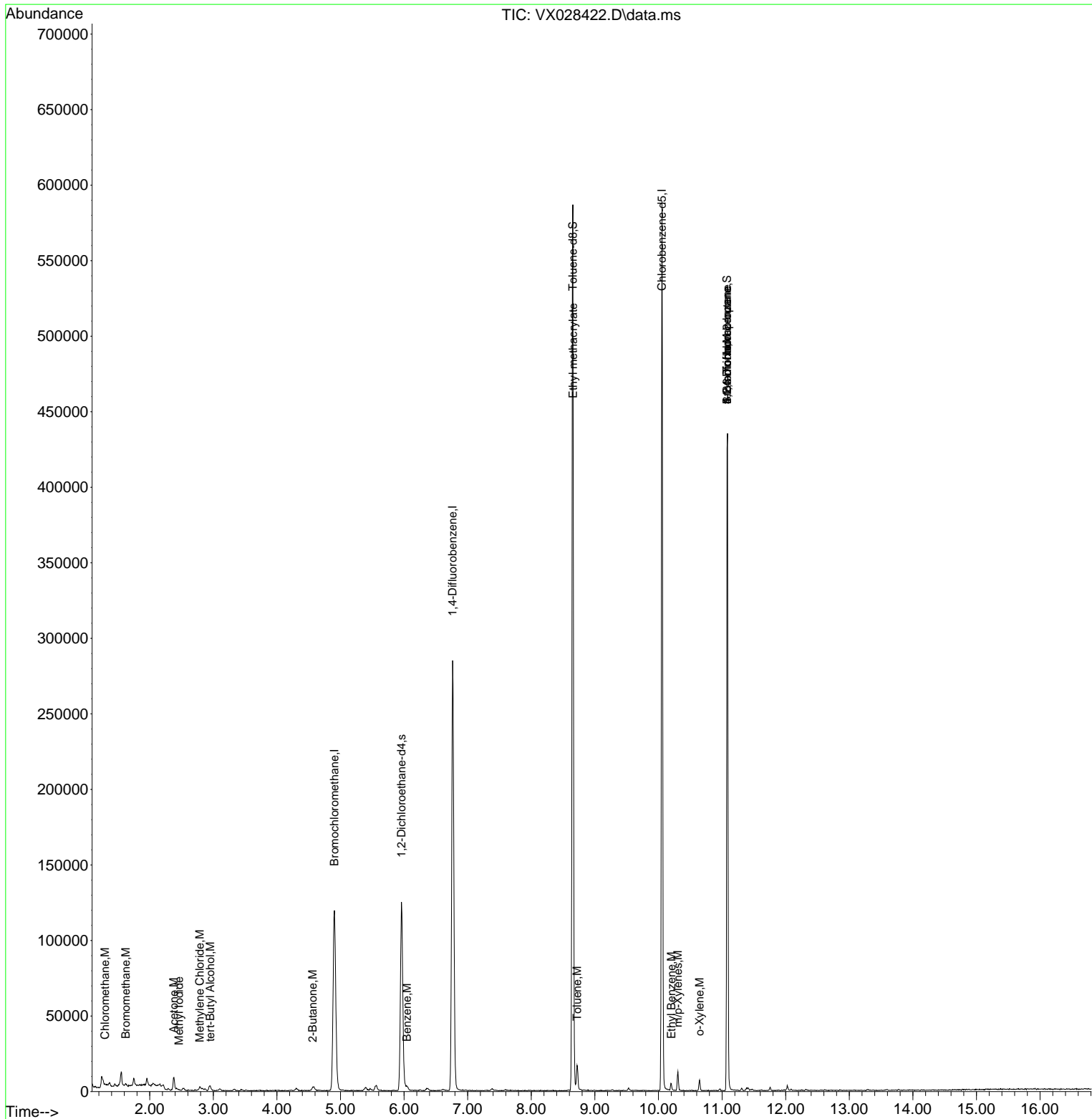
Compound	R.T.	QIon	Response	Conc	Units	Dev(Min)
-----						
Internal Standards						
1) Bromochloromethane	4.903	128	53740	30.000	ug/l	0.00
28) 1,4-Difluorobenzene	6.763	114	301869	30.000	ug/l	0.00
57) Chlorobenzene-d5	10.055	117	269828	30.000	ug/l	0.00
System Monitoring Compounds						
27) 1,2-Dichloroethane-d4	5.958	65	114290	33.441	ug/l	0.00
Spiked Amount	30.000	Range 91 - 110	Recovery	=	111.467%#	
60) 4-Bromofluorobenzene	11.079	95	117810	28.075	ug/l	0.00
Spiked Amount	30.000	Range 63 - 112	Recovery	=	93.600%	
63) Toluene-d8	8.653	98	353736	30.946	ug/l	0.00
Spiked Amount	30.000	Range 91 - 112	Recovery	=	103.167%	
Target Compounds						
						Qvalue
3) Chloromethane	1.294	50	303	0.202	ug/l #	43
5) Bromomethane	1.624	94	839	0.534	ug/l	100
11) Methyl Iodide	2.459	142	604	0.222	ug/l #	87
15) Acetone	2.380	58	3161	7.580	ug/l	74
18) Methylene Chloride	2.788	84	1049	0.403	ug/l	95
23) tert-Butyl Alcohol	2.953	59	2268	2.852	ug/l #	100
30) 2-Butanone	4.562	43	849	0.420	ug/l #	63
34) Benzene	6.043	78	2782	0.272	ug/l #	69
51) Ethyl methacrylate	8.659	69	1145	0.247	ug/l #	54
56) Bromoform	11.079	173	1043	0.408	ug/l #	1
62) Toluene	8.720	91	10972	0.938	ug/l	97
66) Ethyl Benzene	10.201	91	2921	0.212	ug/l	94
67) m/p-Xylenes	10.305	106	3141	0.568	ug/l	96
68) o-Xylene	10.646	106	1698	0.302	ug/l	97
72) 1,2,3-Trichloropropane	11.079	75	59777	13.530	ug/l	38
77) t-1,4-Dichloro-2-butene	11.079	75	59777	44.685	ug/l #	3
-----						

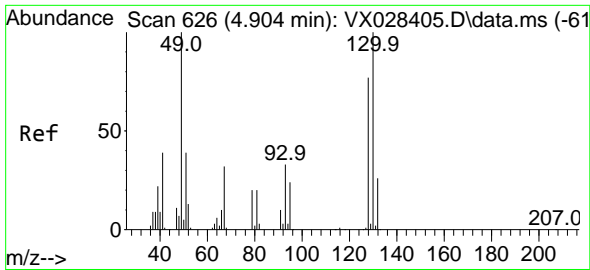
(#) = qualifier out of range (m) = manual integration (+) = signals summed

Data Path : Z:\voasrv\HPCHEM1\MSVOA\_X\Data\VX042922\  
 Data File : VX028422.D  
 Acq On : 29 Apr 2022 14:39  
 Operator : JC/MD  
 Sample : N2563-01  
 Misc : 5.0mL/MSVOA\_X/WATER  
 ALS Vial : 12 Sample Multiplier: 1

Instrument :  
 MSVOA\_X  
 ClientSampleId :  
 STORM-WATER-042622

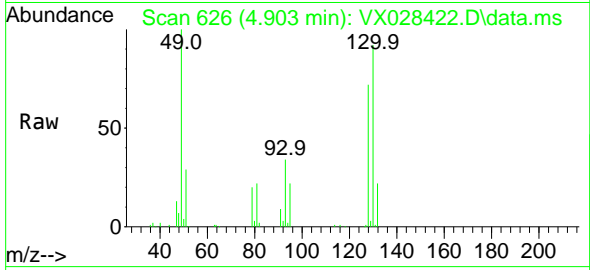
Quant Time: Apr 30 08:16:40 2022  
 Quant Method : Z:\voasrv\HPCHEM1\MSVOA\_X\Method\624X042822W.M  
 Quant Title : METHOD 624 VOLATILE ORGANIC ANALYSIS  
 QLast Update : Fri Apr 29 06:09:36 2022  
 Response via : Initial Calibration



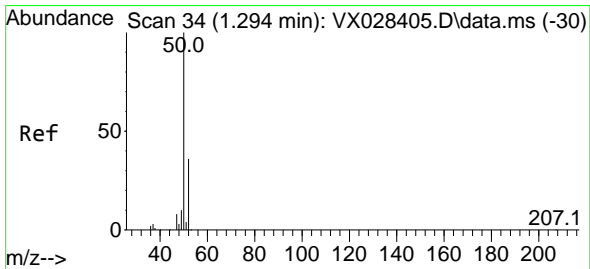
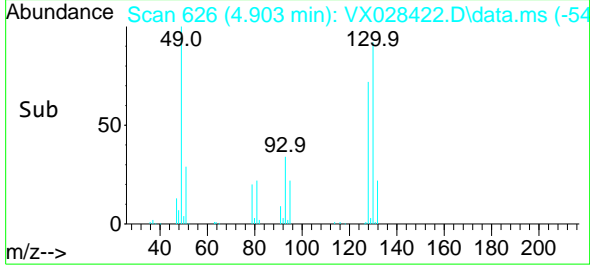


#1  
 Bromochloromethane  
 Concen: 30.000 ug/l  
 RT: 4.903 min Scan# 61  
 Delta R.T. -0.001 min  
 Lab File: VX028422.D  
 Acq: 29 Apr 2022 14:39

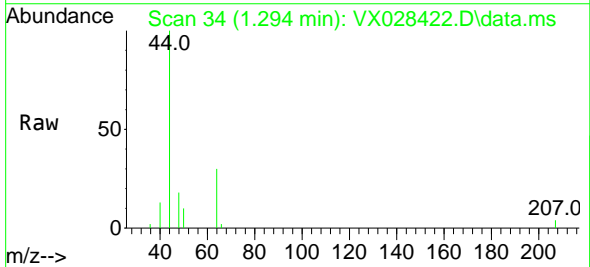
Instrument : MSVOA\_X  
 ClientSampleId : STORM-WATER-042622



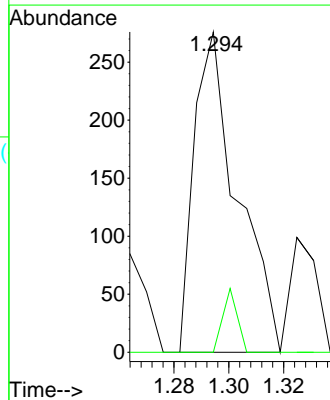
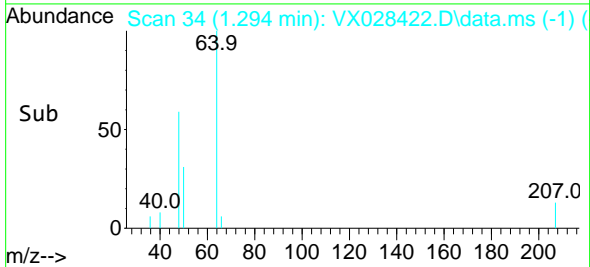
Tgt Ion:128 Resp: 53740  
 Ion Ratio Lower Upper  
 128 100  
 49 134.9 0.0 358.3  
 130 128.2 0.0 319.3

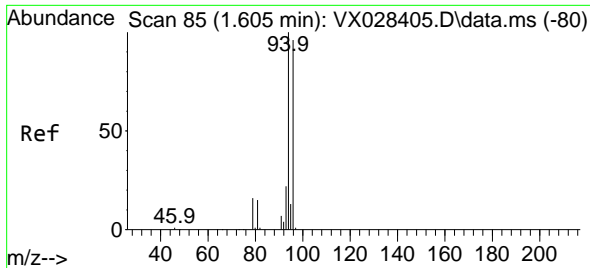


#3  
 Chloromethane  
 Concen: 0.202 ug/l  
 RT: 1.294 min Scan# 34  
 Delta R.T. -0.000 min  
 Lab File: VX028422.D  
 Acq: 29 Apr 2022 14:39



Tgt Ion: 50 Resp: 303  
 Ion Ratio Lower Upper  
 50 100  
 52 0.0 25.6 38.4#

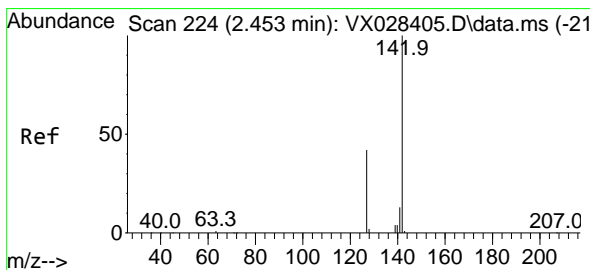
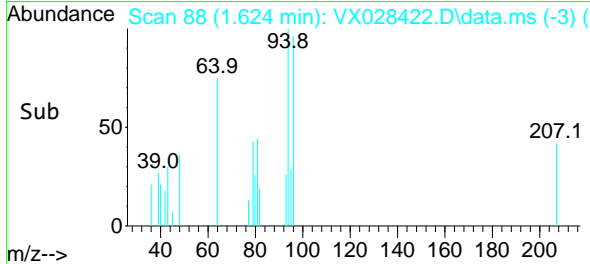
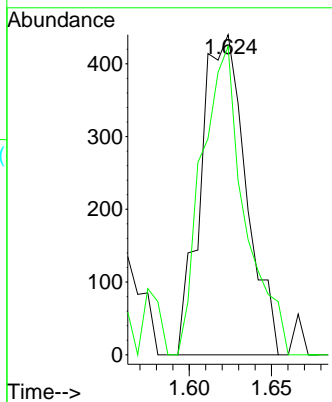
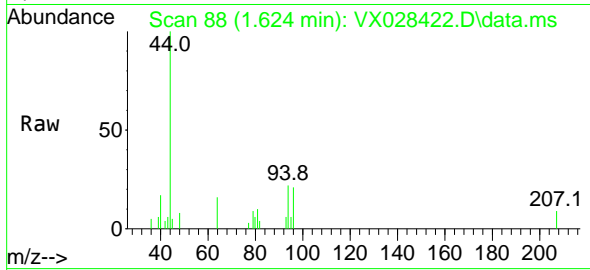




#5  
 Bromomethane  
 Concen: 0.534 ug/l  
 RT: 1.624 min Scan# 85  
 Delta R.T. 0.018 min  
 Lab File: VX028422.D  
 Acq: 29 Apr 2022 14:39

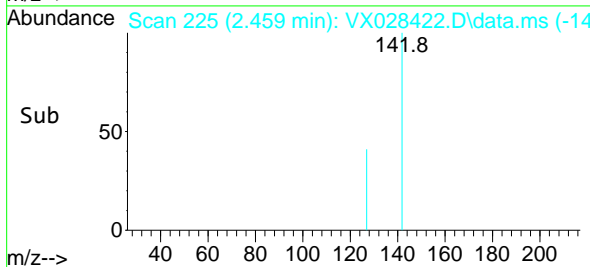
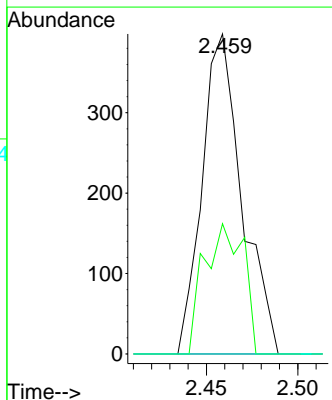
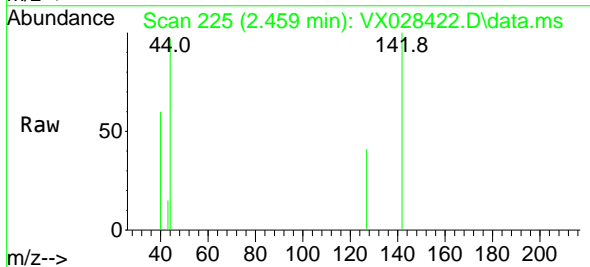
Instrument : MSVOA\_X  
 ClientSampleId : STORM-WATER-042622

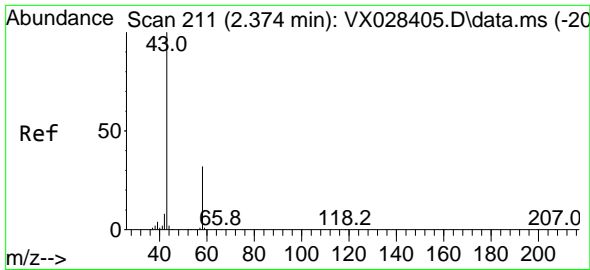
Tgt Ion: 94 Resp: 839  
 Ion Ratio Lower Upper  
 94 100  
 96 96.4 77.0 115.6



#11  
 Methyl Iodide  
 Concen: 0.222 ug/l  
 RT: 2.459 min Scan# 225  
 Delta R.T. 0.006 min  
 Lab File: VX028422.D  
 Acq: 29 Apr 2022 14:39

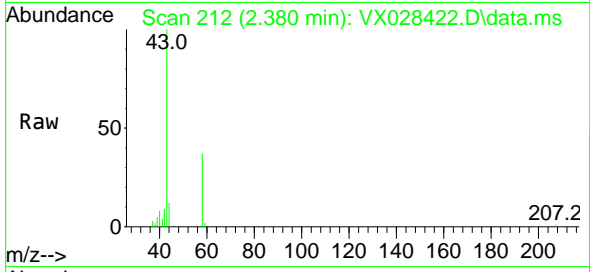
Tgt Ion:142 Resp: 604  
 Ion Ratio Lower Upper  
 142 100  
 127 40.7 22.3 66.9  
 141 0.0 7.0 20.9#



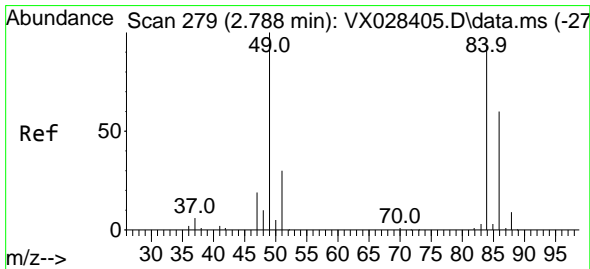
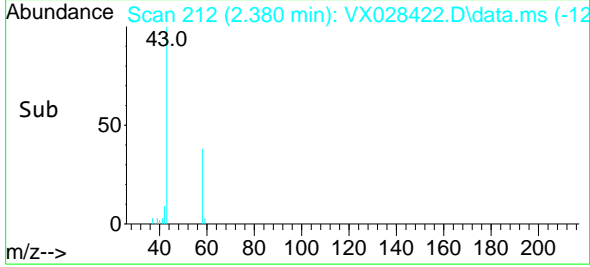
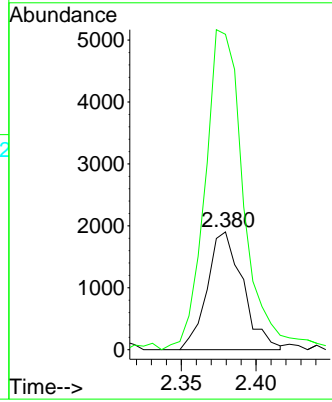


#15  
 Acetone  
 Concen: 7.580 ug/l  
 RT: 2.380 min Scan# 211  
 Delta R.T. 0.006 min  
 Lab File: VX028422.D  
 Acq: 29 Apr 2022 14:39

Instrument :  
 MSVOA\_X  
 ClientSampleId :  
 STORM-WATER-042622

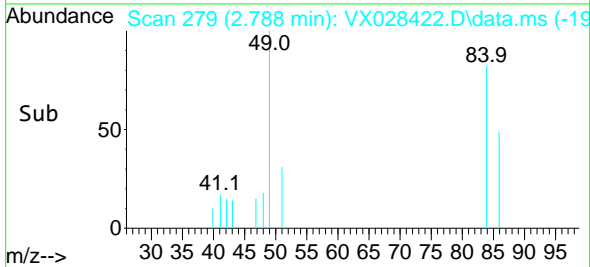
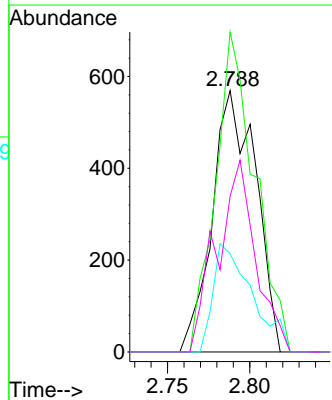
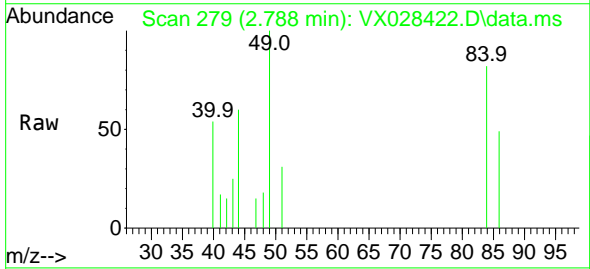


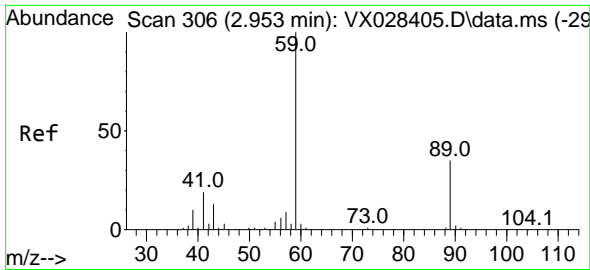
Tgt Ion: 58 Resp: 3161  
 Ion Ratio Lower Upper  
 58 100  
 43 260.9 250.2 375.2



#18  
 Methylene Chloride  
 Concen: 0.403 ug/l  
 RT: 2.788 min Scan# 279  
 Delta R.T. -0.000 min  
 Lab File: VX028422.D  
 Acq: 29 Apr 2022 14:39

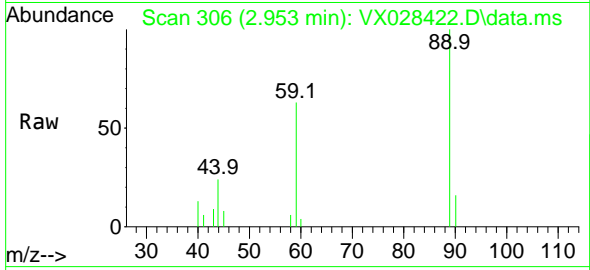
Tgt Ion: 84 Resp: 1049  
 Ion Ratio Lower Upper  
 84 100  
 49 122.5 94.2 141.2  
 51 37.6 29.2 43.8  
 86 59.6 51.8 77.6



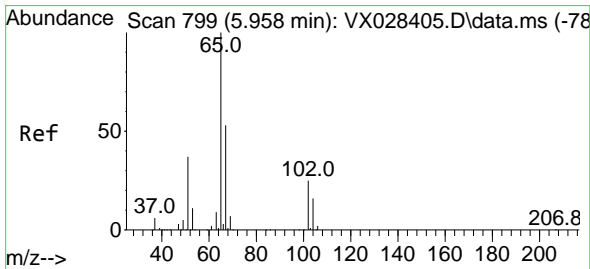
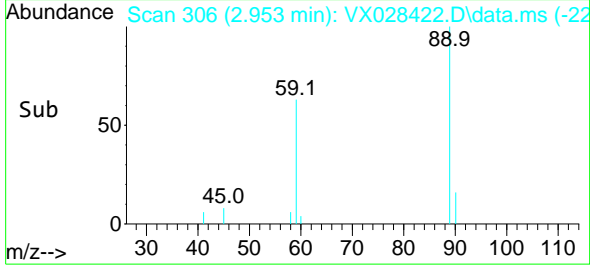
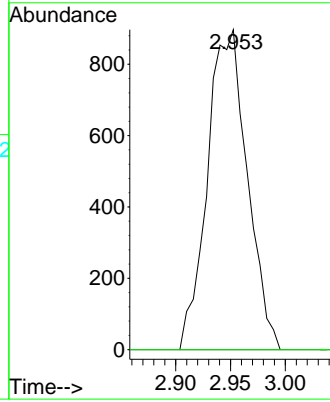


#23  
 tert-Butyl Alcohol  
 Concen: 2.852 ug/l  
 RT: 2.953 min Scan# 306  
 Delta R.T. -0.000 min  
 Lab File: VX028422.D  
 Acq: 29 Apr 2022 14:39

Instrument : MSVOA\_X  
 ClientSampleId : STORM-WATER-042622

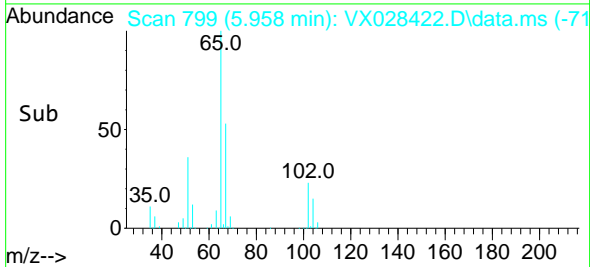
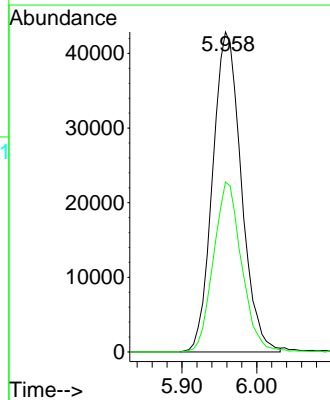
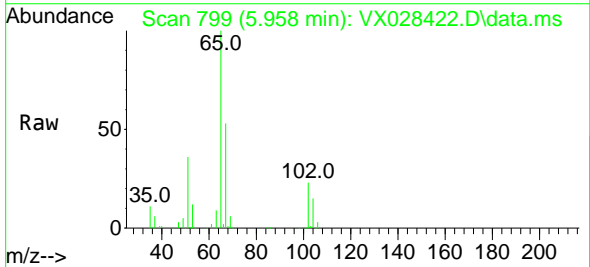


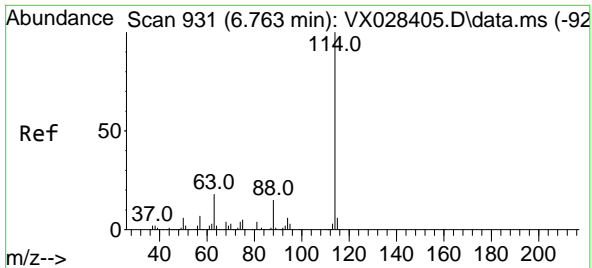
Tgt Ion: 59 Resp: 2268  
 Ion Ratio Lower Upper  
 59 100  
 52 0.0 0.0 0.0



#27  
 1,2-Dichloroethane-d4  
 Concen: 33.441 ug/l  
 RT: 5.958 min Scan# 799  
 Delta R.T. -0.000 min  
 Lab File: VX028422.D  
 Acq: 29 Apr 2022 14:39

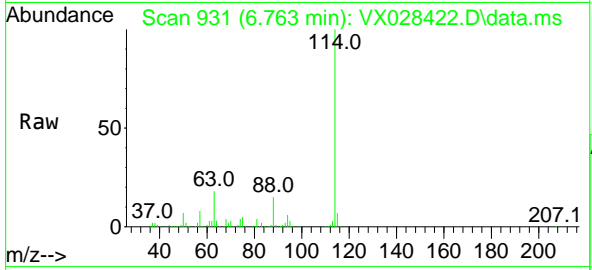
Tgt Ion: 65 Resp: 114290  
 Ion Ratio Lower Upper  
 65 100  
 67 52.1 42.3 63.5





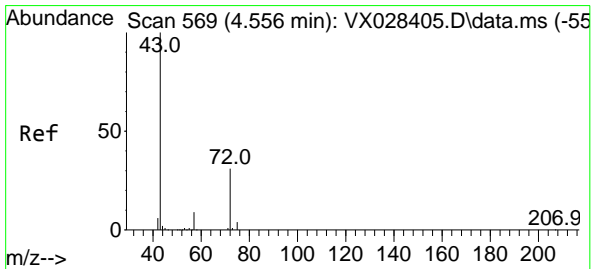
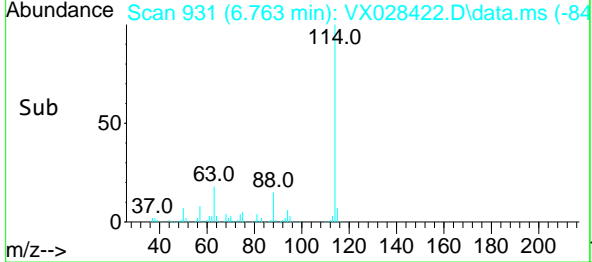
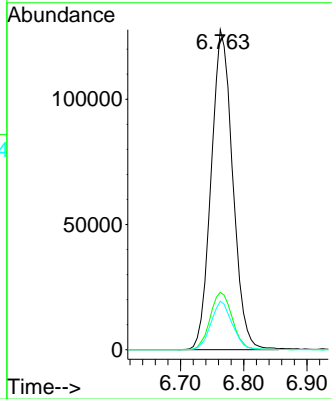
#28  
 1,4-Difluorobenzene  
 Concen: 30.000 ug/l  
 RT: 6.763 min Scan# 91  
 Delta R.T. -0.000 min  
 Lab File: VX028422.D  
 Acq: 29 Apr 2022 14:39

Instrument : MSVOA\_X  
 ClientSampleId : STORM-WATER-042622



Tgt Ion: 114 Resp: 301869

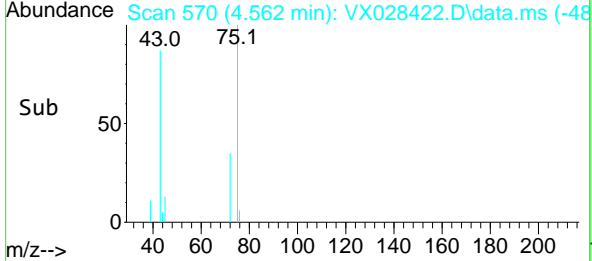
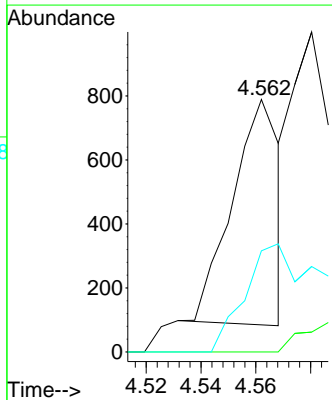
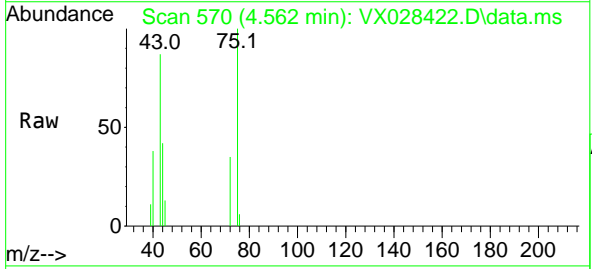
Ion	Ratio	Lower	Upper
114	100		
63	18.5	15.3	22.9
88	15.0	12.2	18.4

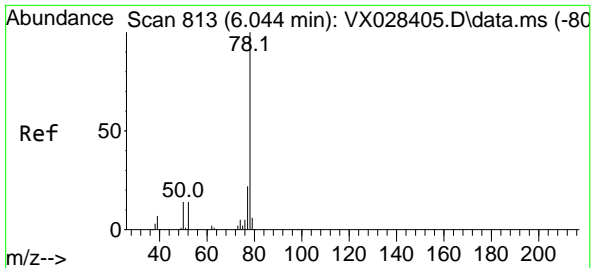


#30  
 2-Butanone  
 Concen: 0.420 ug/l  
 RT: 4.562 min Scan# 570  
 Delta R.T. 0.006 min  
 Lab File: VX028422.D  
 Acq: 29 Apr 2022 14:39

Tgt Ion: 43 Resp: 849

Ion	Ratio	Lower	Upper
43	100		
57	0.0	6.6	10.0#
72	49.2	22.1	33.1#



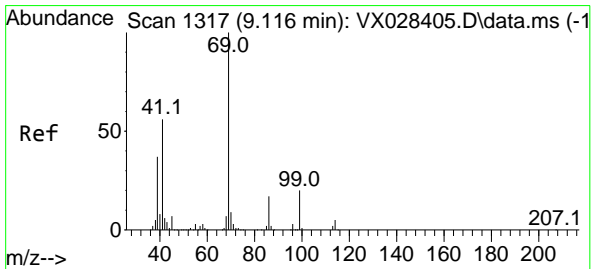
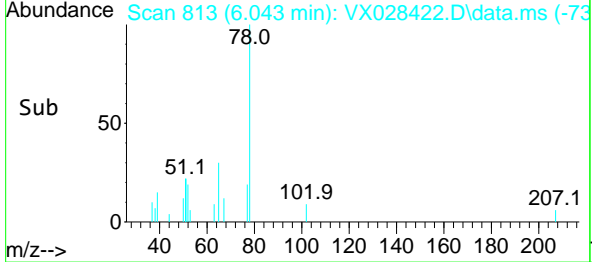
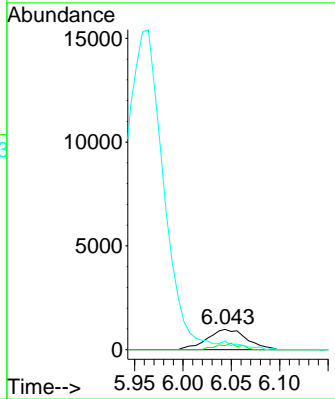
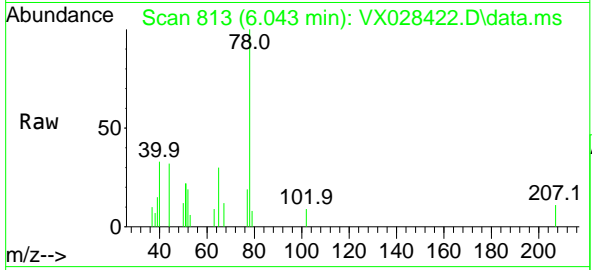


#34  
Benzene  
Concen: 0.272 ug/l  
RT: 6.043 min Scan# 813  
Delta R.T. -0.000 min  
Lab File: VX028422.D  
Acq: 29 Apr 2022 14:39

Instrument : MSVOA\_X  
ClientSampleId : STORM-WATER-042622

Tgt Ion: 78 Resp: 2782

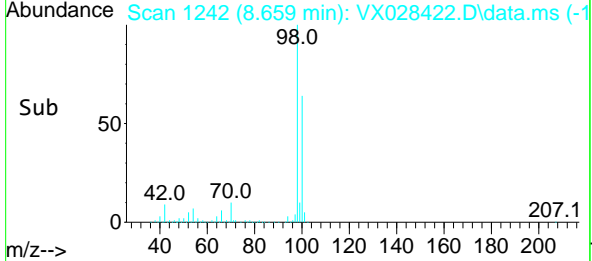
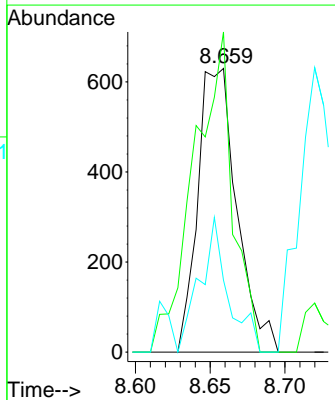
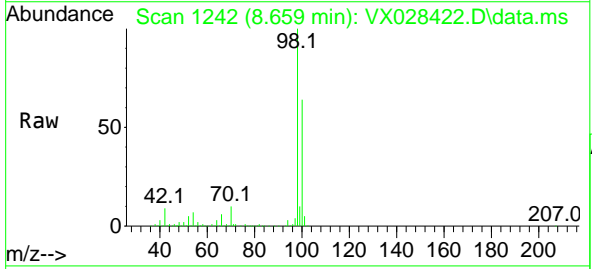
Ion	Ratio	Lower	Upper
78	100		
77	19.5	18.5	27.7
51	43.7	12.9	19.3#



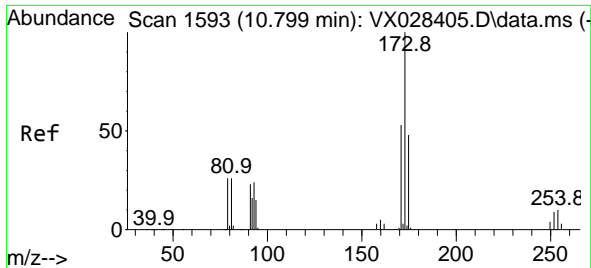
#51  
Ethyl methacrylate  
Concen: 0.247 ug/l  
RT: 8.659 min Scan# 1242  
Delta R.T. -0.457 min  
Lab File: VX028422.D  
Acq: 29 Apr 2022 14:39

Tgt Ion: 69 Resp: 1145

Ion	Ratio	Lower	Upper
69	100		
41	112.9	32.1	96.5#
39	25.4	18.3	54.9



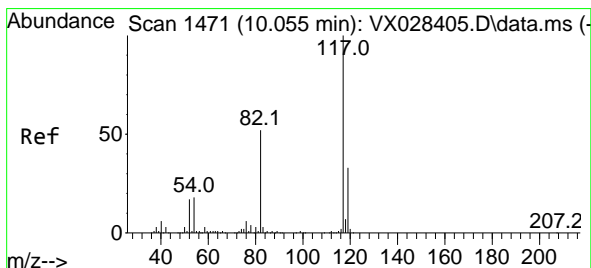
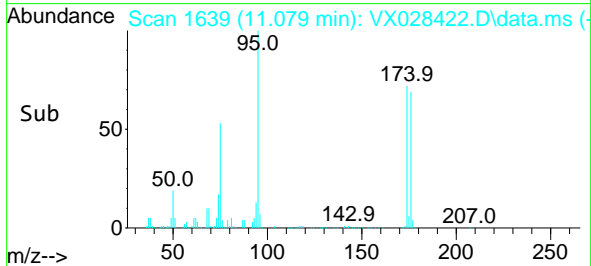
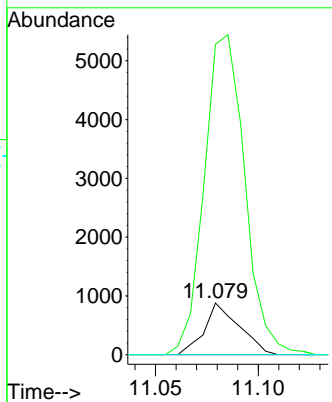
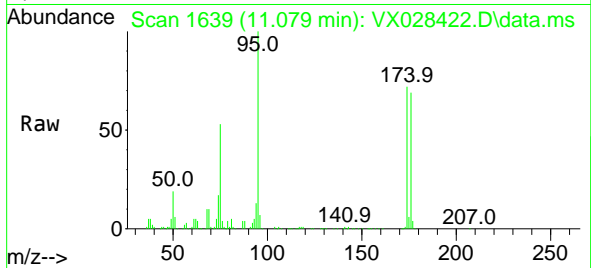




#56  
 Bromoform  
 Concen: 0.408 ug/l  
 RT: 11.079 min Scan# 11079  
 Delta R.T. 0.280 min  
 Lab File: VX028422.D  
 Acq: 29 Apr 2022 14:39

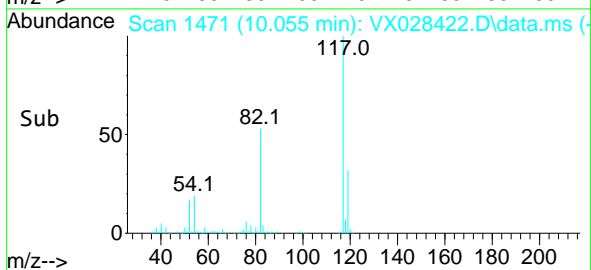
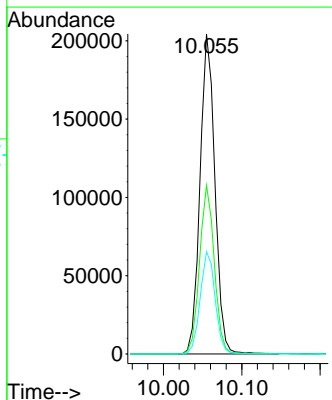
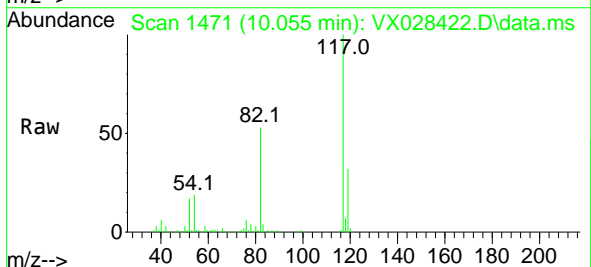
Instrument : MSVOA\_X  
 ClientSampleId : STORM-WATER-042622

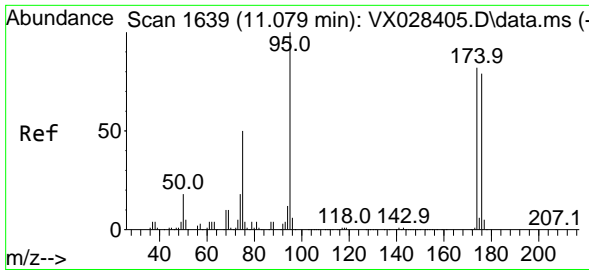
Tgt Ion	Resp	Lower	Upper
173	1043		
175	716.5	40.3	60.5#
254	0.0	7.4	11.2#



#57  
 Chlorobenzene-d5  
 Concen: 30.000 ug/l  
 RT: 10.055 min Scan# 1471  
 Delta R.T. -0.000 min  
 Lab File: VX028422.D  
 Acq: 29 Apr 2022 14:39

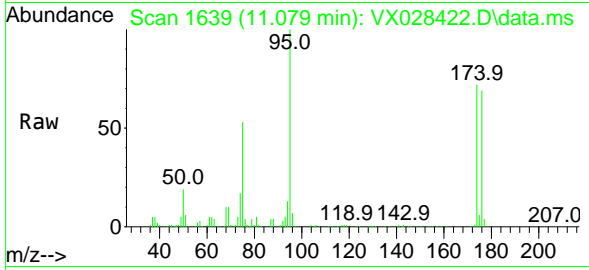
Tgt Ion	Resp	Lower	Upper
117	269828		
82	52.3	42.3	63.5
119	32.2	26.2	39.2



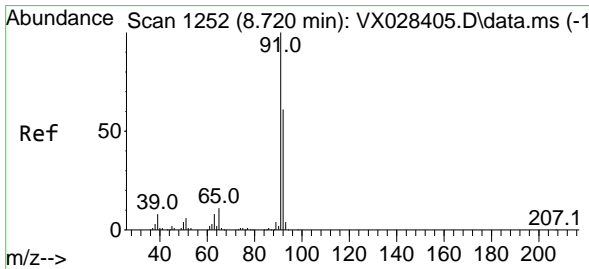
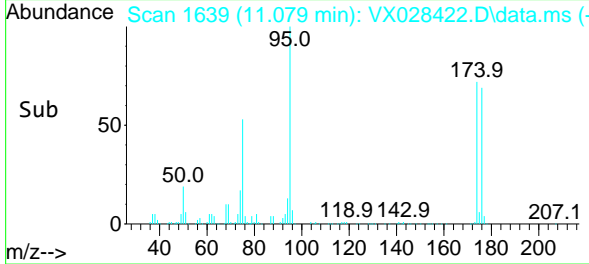
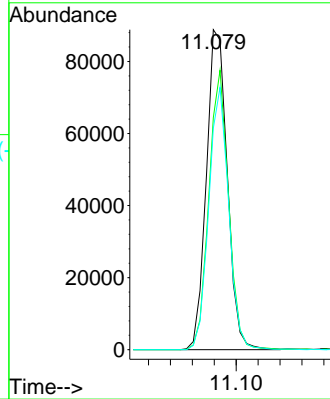


#60  
 4-Bromofluorobenzene  
 Concen: 28.075 ug/l  
 RT: 11.079 min Scan# 11  
 Delta R.T. -0.000 min  
 Lab File: VX028422.D  
 Acq: 29 Apr 2022 14:39

Instrument : MSVOA\_X  
 ClientSampleId : STORM-WATER-042622

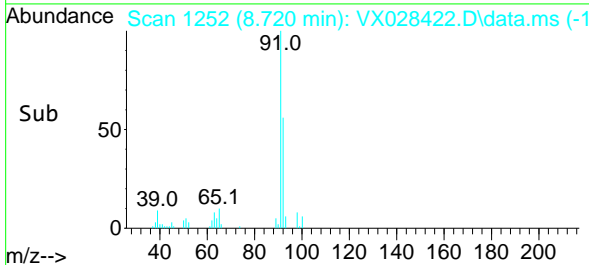
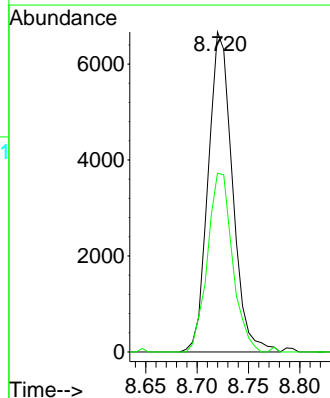
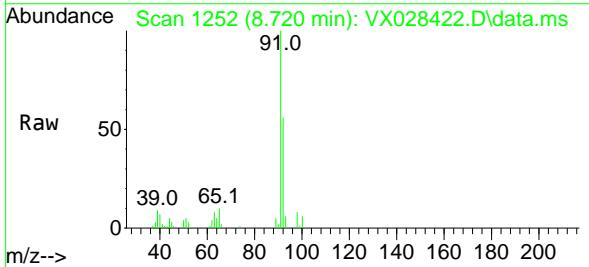


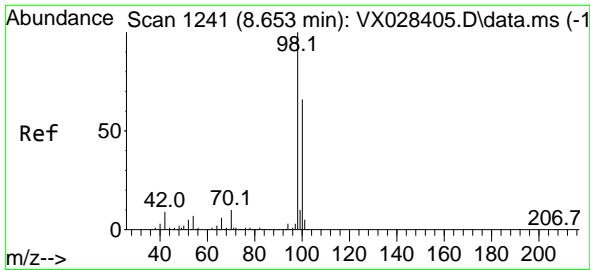
Tgt Ion: 95 Resp: 117810  
 Ion Ratio Lower Upper  
 95 100  
 174 82.2 65.4 98.2  
 176 77.8 63.4 95.0



#62  
 Toluene  
 Concen: 0.938 ug/l  
 RT: 8.720 min Scan# 1252  
 Delta R.T. -0.000 min  
 Lab File: VX028422.D  
 Acq: 29 Apr 2022 14:39

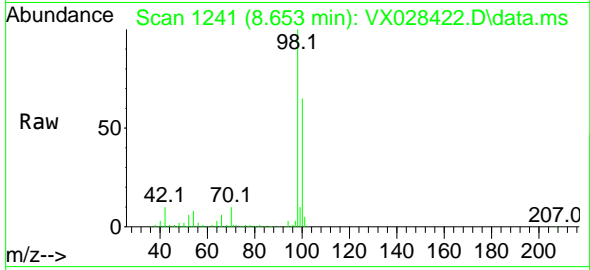
Tgt Ion: 91 Resp: 10972  
 Ion Ratio Lower Upper  
 91 100  
 92 57.5 48.1 72.1



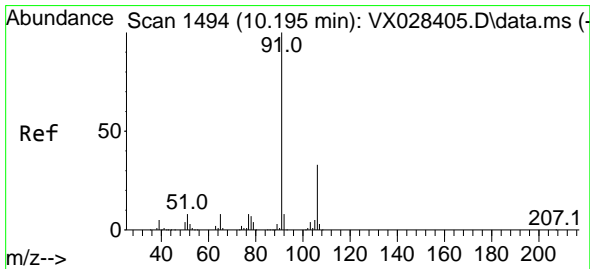
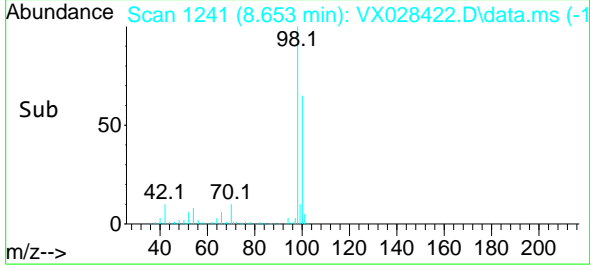
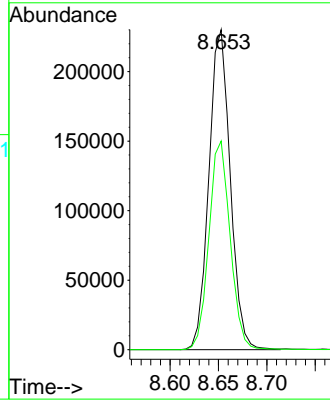


#63  
 Toluene-d8  
 Concen: 30.946 ug/l  
 RT: 8.653 min Scan# 11  
 Delta R.T. -0.000 min  
 Lab File: VX028422.D  
 Acq: 29 Apr 2022 14:39

Instrument : MSVOA\_X  
 ClientSampleId : STORM-WATER-042622

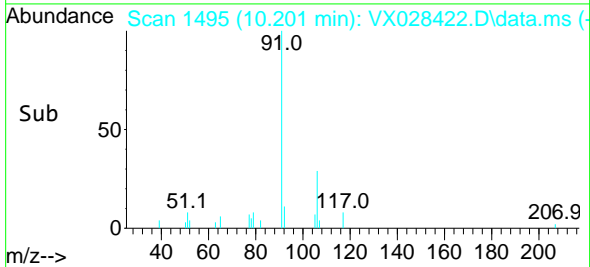
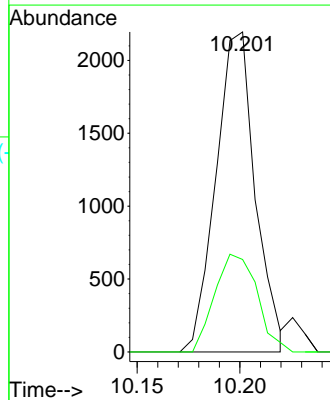
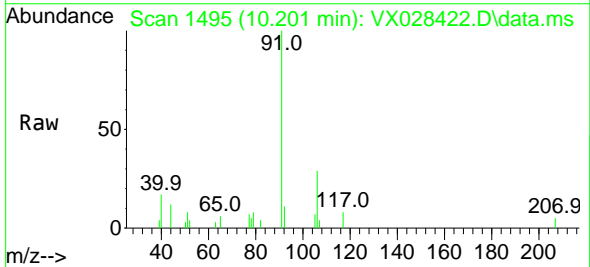


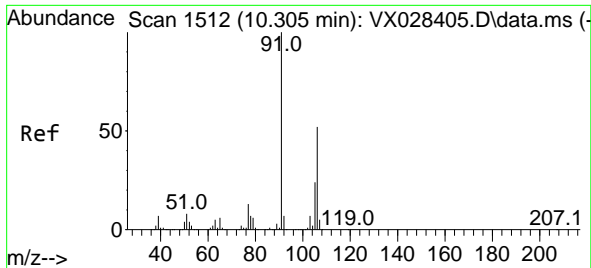
Tgt Ion: 98 Resp: 353736  
 Ion Ratio Lower Upper  
 98 100  
 100 64.9 51.4 77.2



#66  
 Ethyl Benzene  
 Concen: 0.212 ug/l  
 RT: 10.201 min Scan# 1495  
 Delta R.T. 0.006 min  
 Lab File: VX028422.D  
 Acq: 29 Apr 2022 14:39

Tgt Ion: 91 Resp: 2921  
 Ion Ratio Lower Upper  
 91 100  
 106 28.9 25.8 38.8

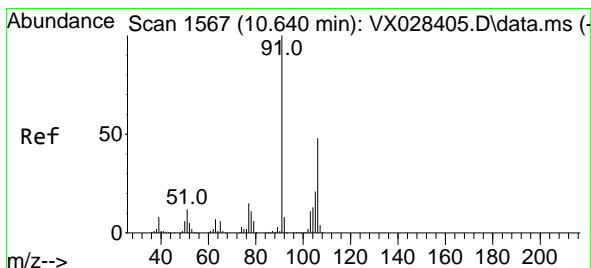
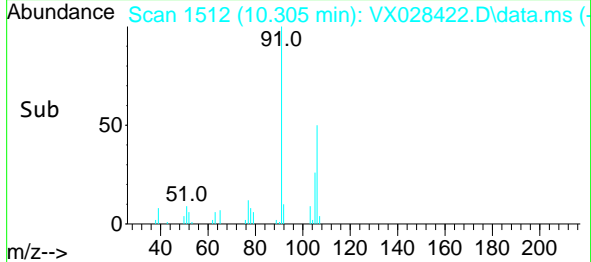
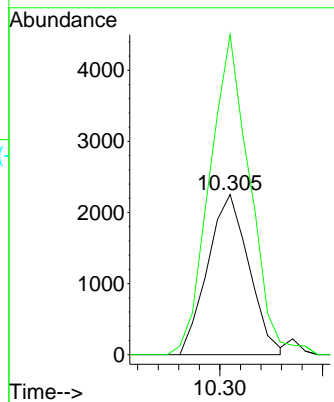
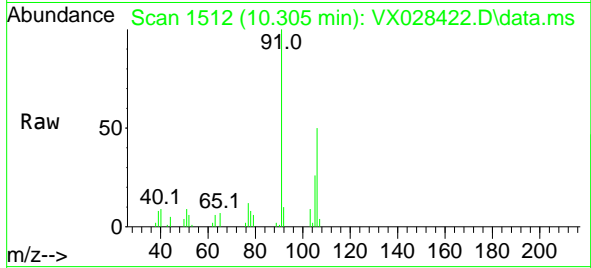




#67  
 m/p-Xylenes  
 Concen: 0.568 ug/l  
 RT: 10.305 min Scan# 1512  
 Delta R.T. -0.000 min  
 Lab File: VX028422.D  
 Acq: 29 Apr 2022 14:39

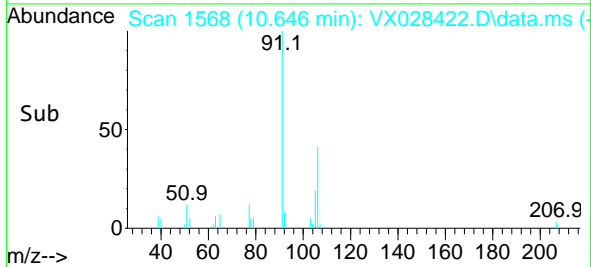
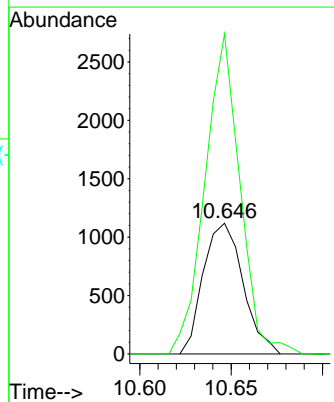
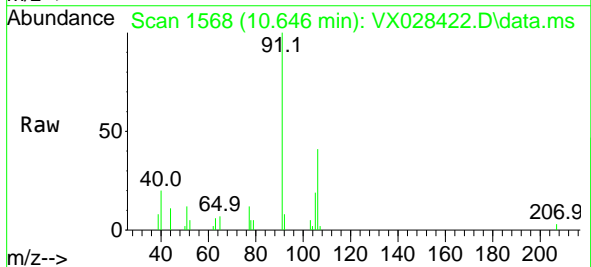
Instrument : MSVOA\_X  
 ClientSampleId : STORM-WATER-042622

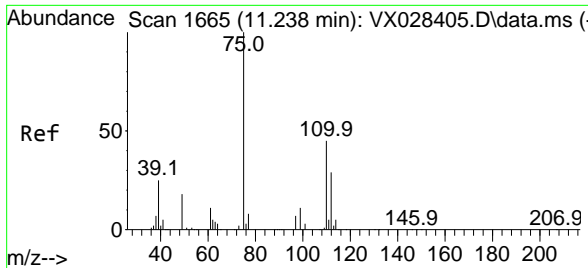
Tgt Ion:106 Resp: 3141  
 Ion Ratio Lower Upper  
 106 100  
 91 193.7 159.5 239.3



#68  
 o-Xylene  
 Concen: 0.302 ug/l  
 RT: 10.646 min Scan# 1568  
 Delta R.T. 0.006 min  
 Lab File: VX028422.D  
 Acq: 29 Apr 2022 14:39

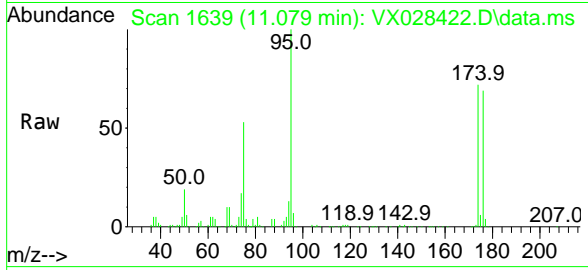
Tgt Ion:106 Resp: 1698  
 Ion Ratio Lower Upper  
 106 100  
 91 215.3 105.4 316.2



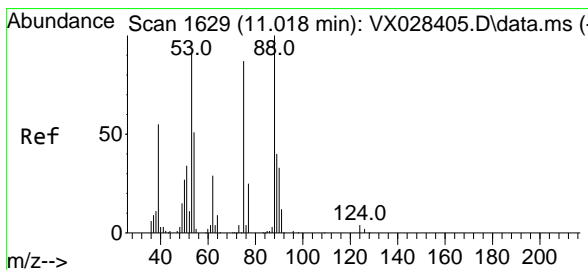
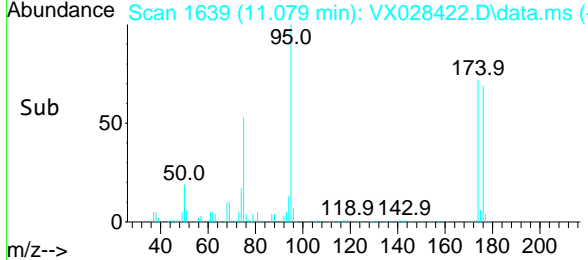
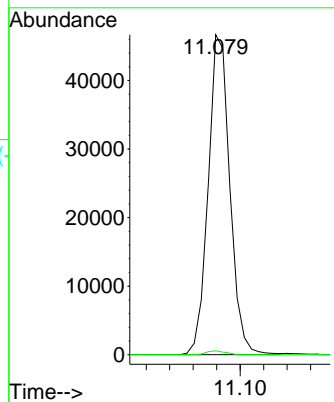


#72  
 1,2,3-Trichloropropane  
 Concen: 13.530 ug/l  
 RT: 11.079 min Scan# 1639  
 Delta R.T. -0.159 min  
 Lab File: VX028422.D  
 Acq: 29 Apr 2022 14:39

Instrument : MSVOA\_X  
 ClientSampleId : STORM-WATER-042622



Tgt Ion: 75 Resp: 59777  
 Ion Ratio Lower Upper  
 75 100  
 77 1.0 0.0 78.6



#77  
 t-1,4-Dichloro-2-butene  
 Concen: 44.685 ug/l  
 RT: 11.079 min Scan# 1639  
 Delta R.T. 0.061 min  
 Lab File: VX028422.D  
 Acq: 29 Apr 2022 14:39

Tgt Ion: 75 Resp: 59777  
 Ion Ratio Lower Upper  
 75 100  
 53 0.0 59.7 179.1#  
 89 0.0 23.1 69.2#

