

Data Path : Z:\voasrv\HPCHEM1\MSVOA_X\Data\VX042922\
 Data File : VX028435.D
 Acq On : 29 Apr 2022 19:42
 Operator : JC/MD
 Sample : N2609-05
 Misc : 5.0mL/MSVOA_X/WATER
 ALS Vial : 25 Sample Multiplier: 1

Instrument :
 MSVOA_X
 ClientSampleId :
 WC-2

Quant Time: Apr 30 09:18:05 2022
 Quant Method : Z:\voasrv\HPCHEM1\MSVOA_X\Method\82X041922W.M
 Quant Title : SW846 8260
 QLast Update : Tue Apr 19 13:38:04 2022
 Response via : Initial Calibration

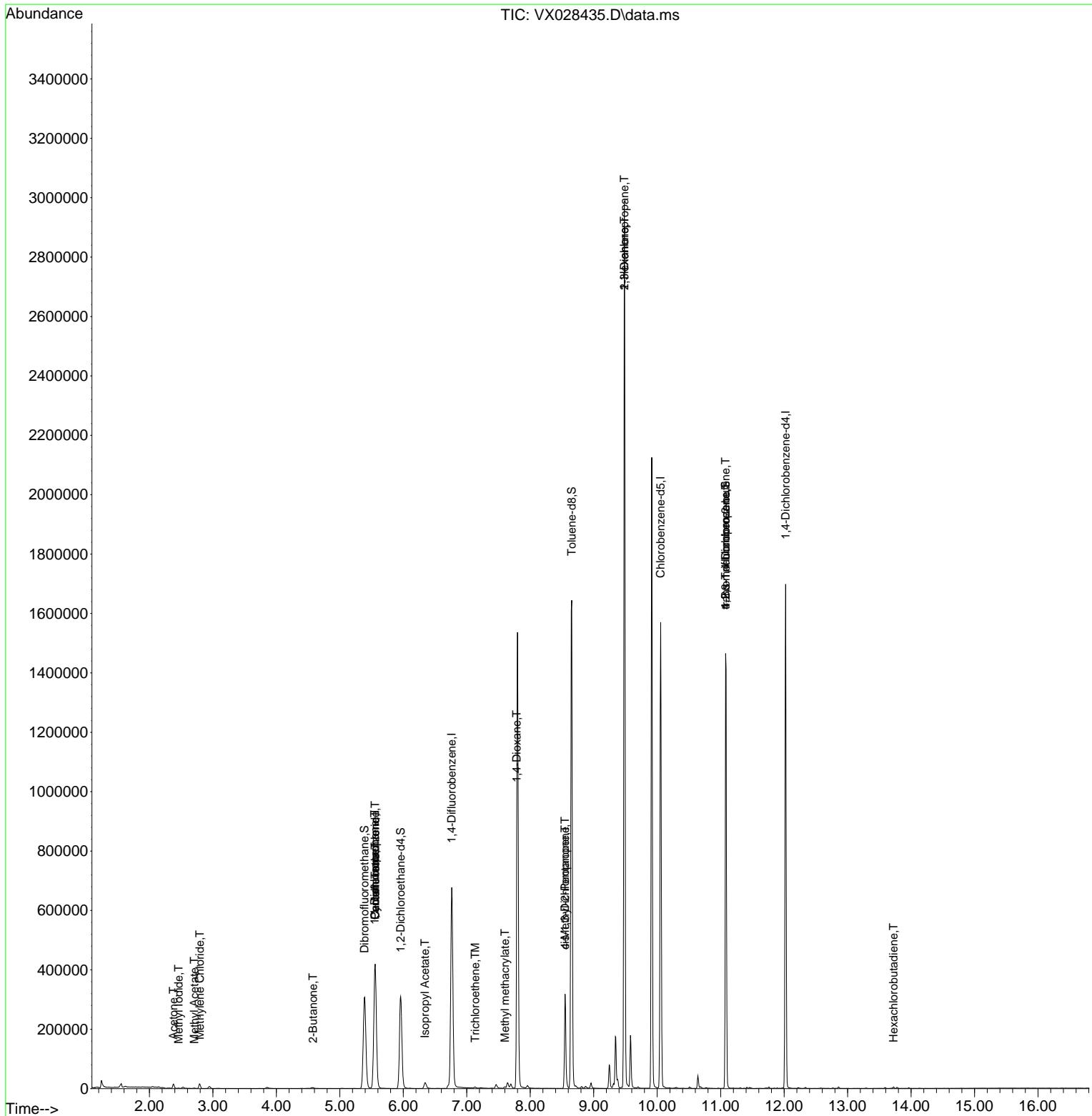
Compound	R.T.	QIon	Response	Conc	Units	Dev(Min)
Internal Standards						
1) Pentafluorobenzene	5.556	168	411530	50.000	ug/l	0.00
34) 1,4-Difluorobenzene	6.763	114	715109	50.000	ug/l	0.00
63) Chlorobenzene-d5	10.055	117	739069	50.000	ug/l	0.00
72) 1,4-Dichlorobenzene-d4	12.024	152	352366	50.000	ug/l	0.00
System Monitoring Compounds						
33) 1,2-Dichloroethane-d4	5.958	65	295415	55.054	ug/l	0.00
Spiked Amount	50.000	Range 61 - 141	Recovery	=	110.100%	
35) Dibromofluoromethane	5.385	113	266542	53.149	ug/l	0.00
Spiked Amount	50.000	Range 69 - 133	Recovery	=	106.300%	
50) Toluene-d8	8.653	98	1018701	52.888	ug/l	0.00
Spiked Amount	50.000	Range 65 - 126	Recovery	=	105.780%	
62) 4-Bromofluorobenzene	11.079	95	383280	52.042	ug/l	0.00
Spiked Amount	50.000	Range 58 - 135	Recovery	=	104.080%	
Target Compounds						
						Qvalue
3) Chloromethane	1.294	50	491	Below Cal	#	77
5) Bromomethane	1.618	94	1386	Below Cal		89
6) Chloroethane	1.636	64	339	Below Cal	#	43
8) Diethyl Ether	2.136	74	103	Below Cal	#	1
10) Methyl Iodide	2.459	142	1288	5.488	ug/l	94
11) Tert butyl alcohol	2.947	59	3612	Below Cal	#	72
16) Acetone	2.380	43	14716	7.626	ug/l	93
18) Methyl Acetate	2.709	43	1899	0.398	ug/l	93
20) Methylene Chloride	2.794	84	7097	1.783	ug/l	90
25) 2-Butanone	4.574	43	3652	1.149	ug/l	97
31) Cyclohexane	5.556	56	8756	1.339	ug/l #	17
36) 1,1-Dichloropropene	5.550	75	30333	4.637	ug/l #	49
38) Carbon Tetrachloride	5.556	117	39958	5.411	ug/l #	15
43) Isopropyl Acetate	6.342	43	26016	2.408	ug/l	97
44) Trichloroethene	7.135	130	1395	0.251	ug/l	71
48) Methyl methacrylate	7.604	41	7139	1.439	ug/l #	7
49) 1,4-Dioxane	7.787	88	274	2.065	ug/l #	1
51) 4-Methyl-2-Pentanone	8.549	43	99223	14.313	ug/l #	44
54) cis-1,3-Dichloropropene	8.549	75	53947	6.689	ug/l #	67
57) 1,3-Dichloropropane	9.482	76	28783	3.299	ug/l #	43
59) 2-Hexanone	9.482	43	316384	58.918	ug/l #	45
76) 1,2,3-Trichloropropane	11.079	75	190005	27.399	ug/l #	38
81) trans-1,4-Dichloro-2-b...	11.079	75	190005	81.422	ug/l #	15
94) Hexachlorobutadiene	13.725	225	711	0.228	ug/l	91

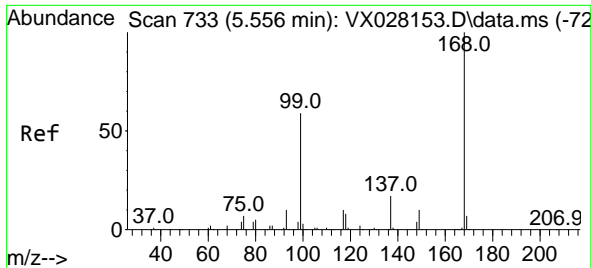
(#) = qualifier out of range (m) = manual integration (+) = signals summed

Data Path : Z:\voasrv\HPCHEM1\MSVOA_X\Data\VX042922\
 Data File : VX028435.D
 Acq On : 29 Apr 2022 19:42
 Operator : JC/MD
 Sample : N2609-05
 Misc : 5.0mL/MSVOA_X/WATER
 ALS Vial : 25 Sample Multiplier: 1

Instrument :
 MSVOA_X
 ClientSampleId :
 WC-2

Quant Time: Apr 30 09:18:05 2022
 Quant Method : Z:\voasrv\HPCHEM1\MSVOA_X\Method\82X041922W.M
 Quant Title : SW846 8260
 QLast Update : Tue Apr 19 13:38:04 2022
 Response via : Initial Calibration

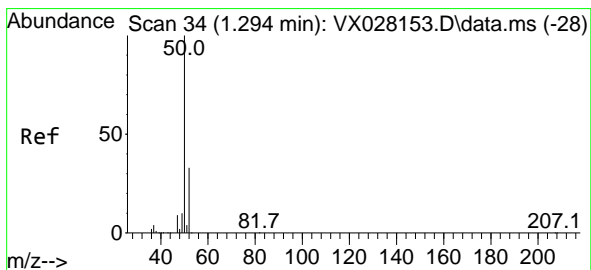
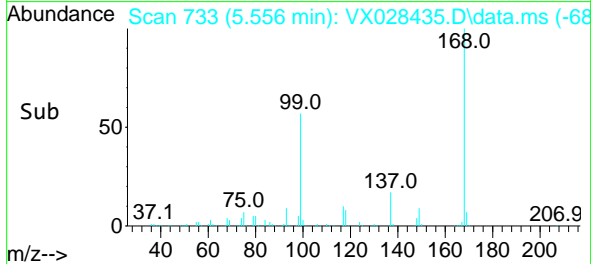
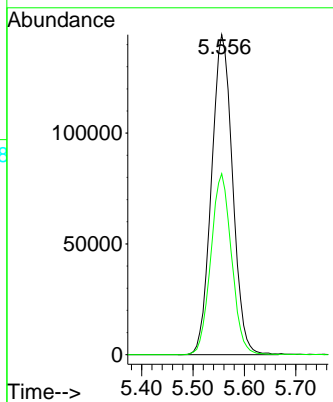
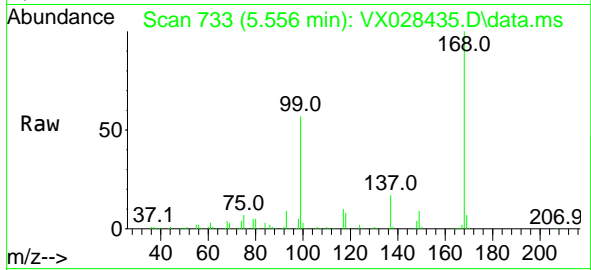




#1
 Pentafluorobenzene
 Concen: 50.000 ug/l
 RT: 5.556 min Scan# 71
 Delta R.T. -0.000 min
 Lab File: VX028435.D
 Acq: 29 Apr 2022 19:42

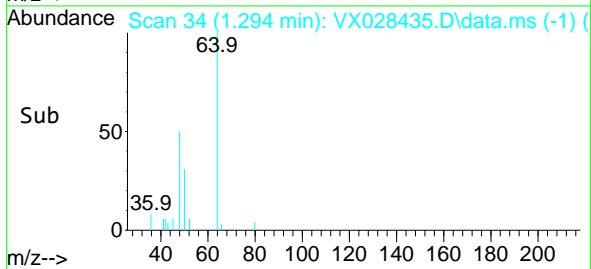
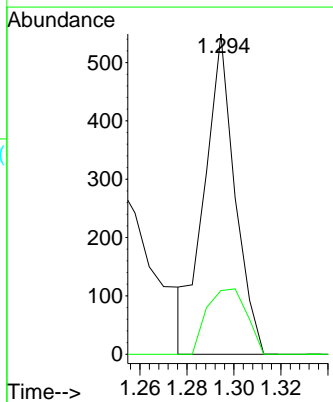
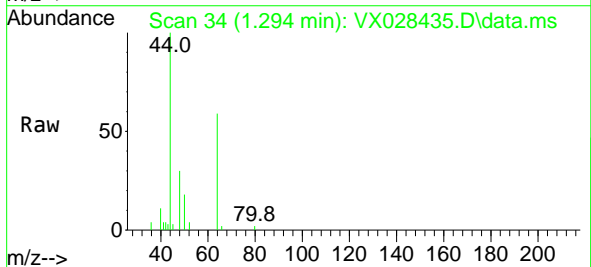
Instrument :
 MSVOA_X
 ClientSampleId :
 WC-2

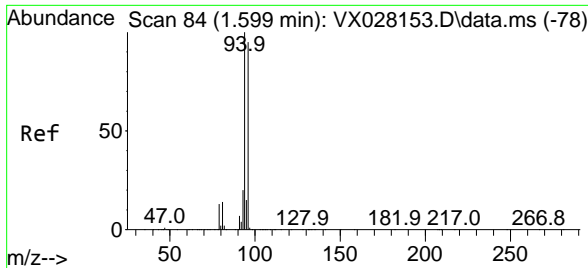
Tgt Ion:168 Resp: 411530
 Ion Ratio Lower Upper
 168 100
 99 56.6 41.7 62.5



#3
 Chloromethane
 Concen: Below Cal
 RT: 1.294 min Scan# 34
 Delta R.T. 0.000 min
 Lab File: VX028435.D
 Acq: 29 Apr 2022 19:42

Tgt Ion: 50 Resp: 491
 Ion Ratio Lower Upper
 50 100
 52 19.9 26.4 39.6#

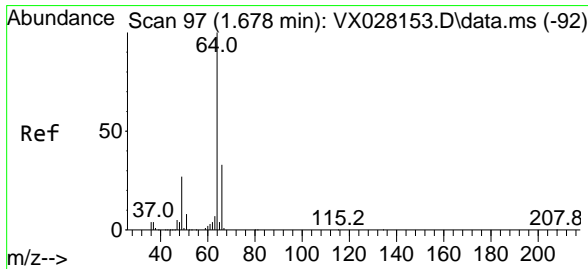
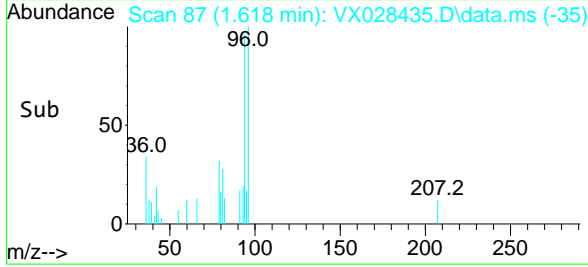
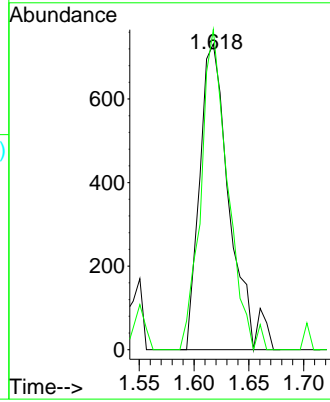
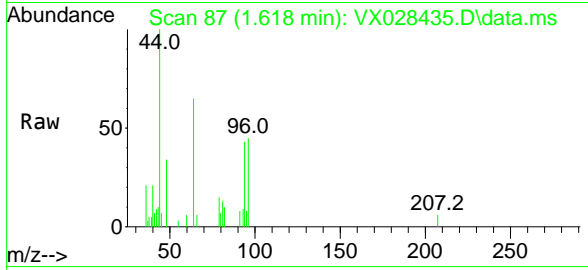




#5
 Bromomethane
 Concen: Below Cal
 RT: 1.618 min Scan# 81
 Delta R.T. 0.019 min
 Lab File: VX028435.D
 Acq: 29 Apr 2022 19:42

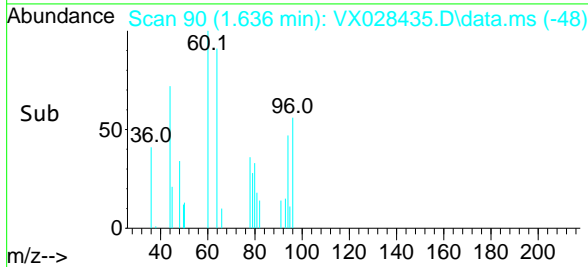
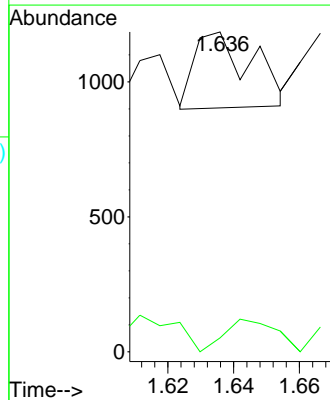
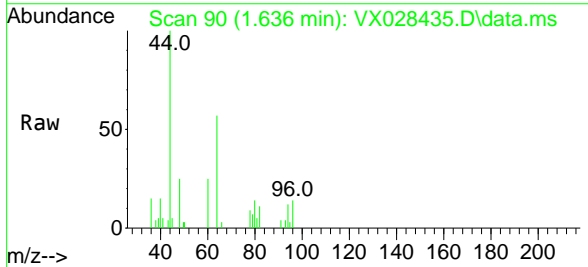
Instrument :
 MSVOA_X
 ClientSampleId :
 WC-2

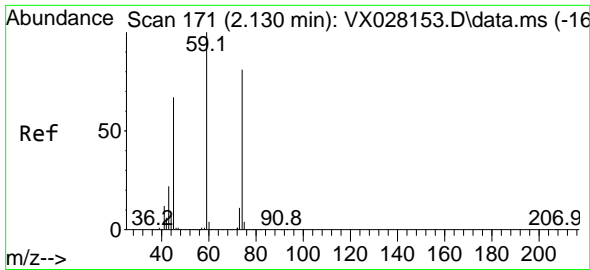
Tgt Ion: 94 Resp: 1386
 Ion Ratio Lower Upper
 94 100
 96 104.6 75.3 112.9



#6
 Chloroethane
 Concen: Below Cal
 RT: 1.636 min Scan# 90
 Delta R.T. -0.042 min
 Lab File: VX028435.D
 Acq: 29 Apr 2022 19:42

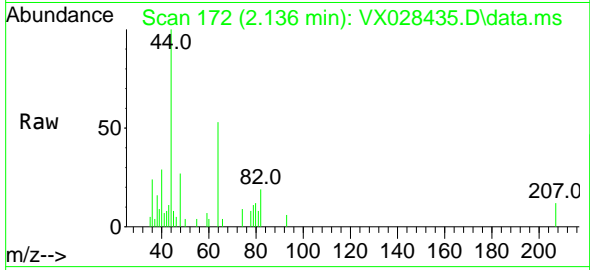
Tgt Ion: 64 Resp: 339
 Ion Ratio Lower Upper
 64 100
 66 0.0 25.3 37.9#



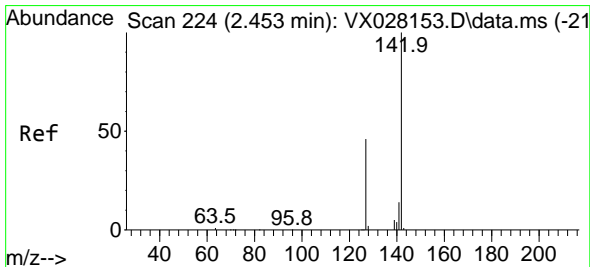
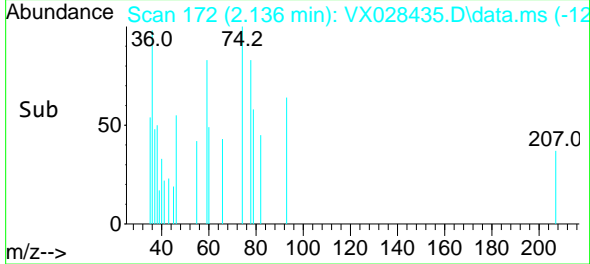
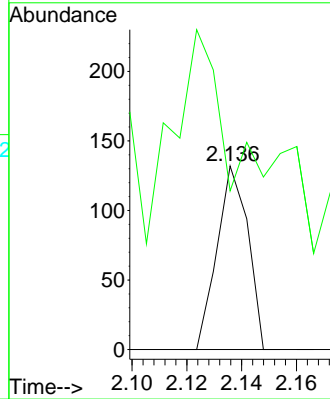


#8
 Diethyl Ether
 Concen: Below Cal
 RT: 2.136 min Scan# 11
 Delta R.T. 0.006 min
 Lab File: VX028435.D
 Acq: 29 Apr 2022 19:42

Instrument :
 MSVOA_X
 ClientSampleId :
 WC-2

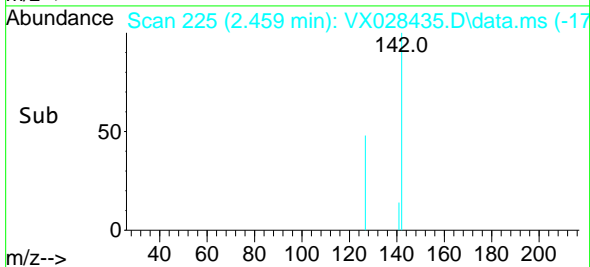
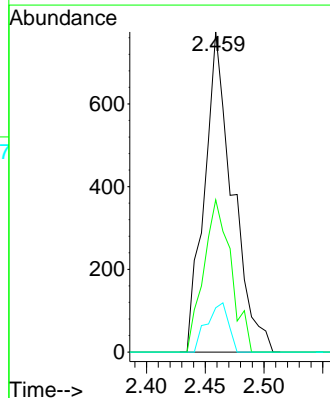
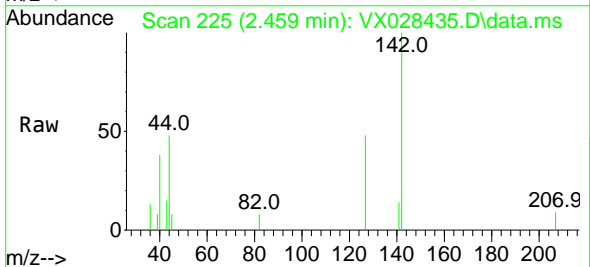


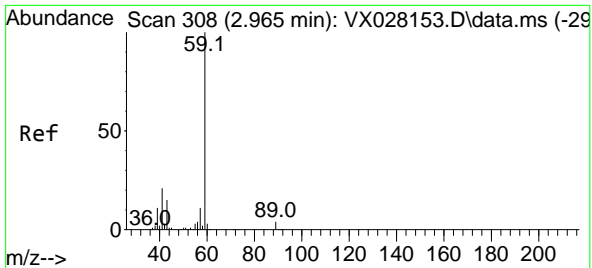
Tgt Ion: 74 Resp: 103
 Ion Ratio Lower Upper
 74 100
 45 213.6 42.0 126.0#



#10
 Methyl Iodide
 Concen: 5.488 ug/l
 RT: 2.459 min Scan# 225
 Delta R.T. 0.006 min
 Lab File: VX028435.D
 Acq: 29 Apr 2022 19:42

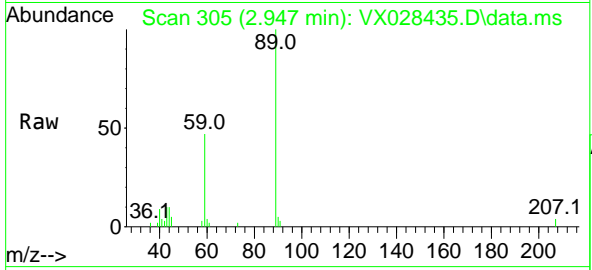
Tgt Ion:142 Resp: 1288
 Ion Ratio Lower Upper
 142 100
 127 46.1 33.9 50.9
 141 11.8 11.4 17.2



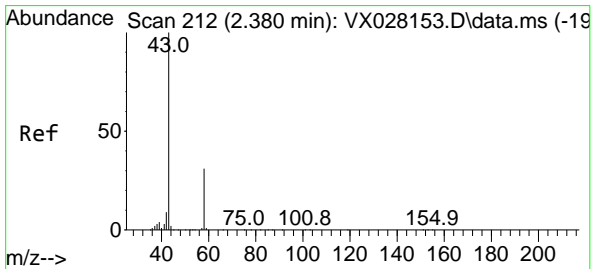
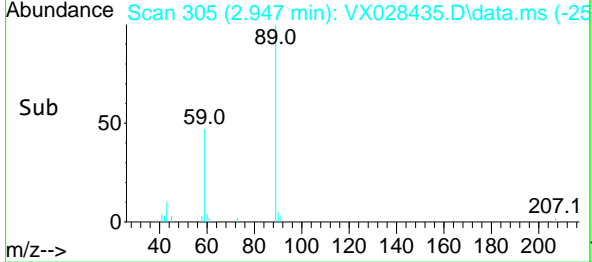
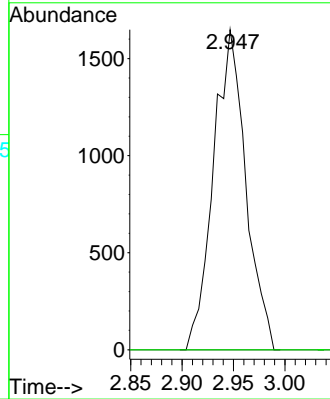


#11
 Tert butyl alcohol
 Concen: Below Cal
 RT: 2.947 min Scan# 308
 Delta R.T. -0.018 min
 Lab File: VX028435.D
 Acq: 29 Apr 2022 19:42

Instrument : MSVOA_X
 ClientSampleId : WC-2

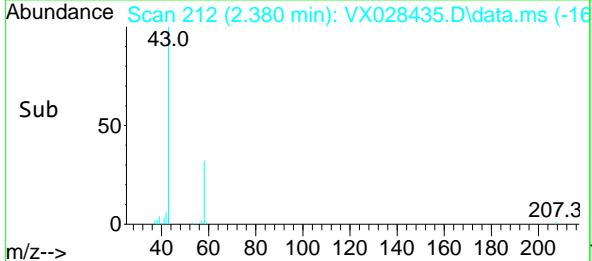
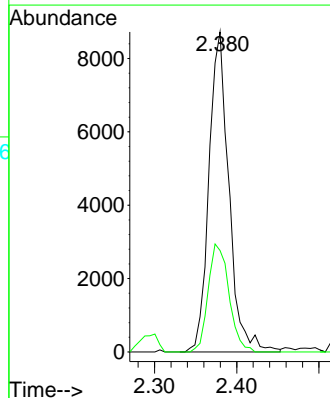
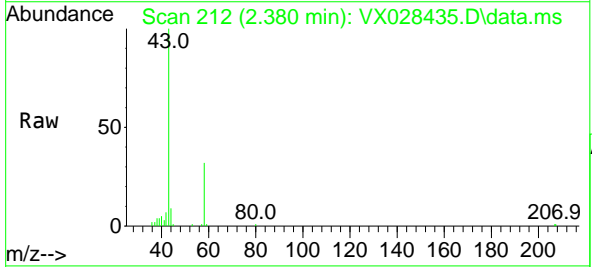


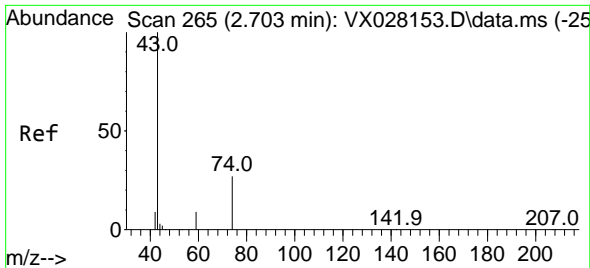
Tgt Ion: 59 Resp: 3612
 Ion Ratio Lower Upper
 59 100
 57 0.0 8.3 12.5#



#16
 Acetone
 Concen: 7.626 ug/l
 RT: 2.380 min Scan# 212
 Delta R.T. -0.000 min
 Lab File: VX028435.D
 Acq: 29 Apr 2022 19:42

Tgt Ion: 43 Resp: 14716
 Ion Ratio Lower Upper
 43 100
 58 31.7 28.8 43.2

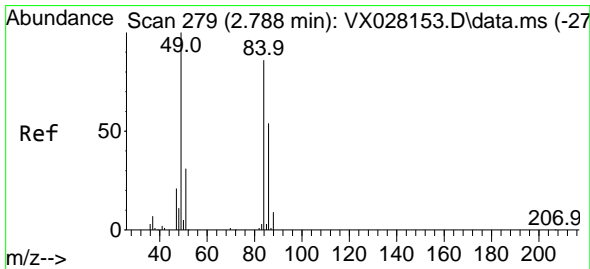
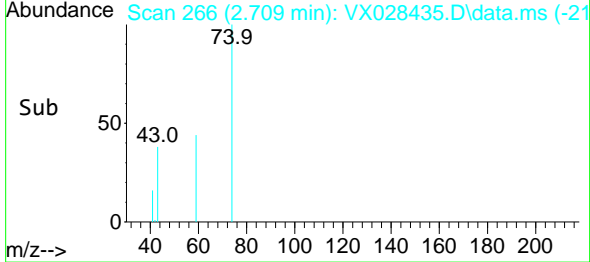
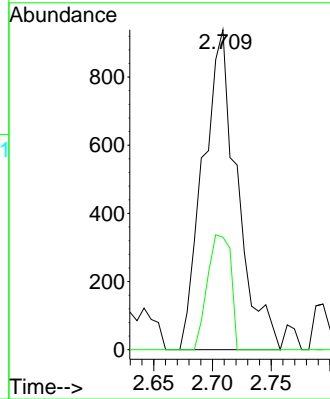
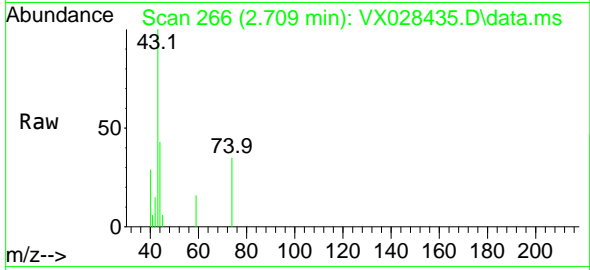




#18
 Methyl Acetate
 Concen: 0.398 ug/l
 RT: 2.709 min Scan# 20
 Delta R.T. 0.006 min
 Lab File: VX028435.D
 Acq: 29 Apr 2022 19:42

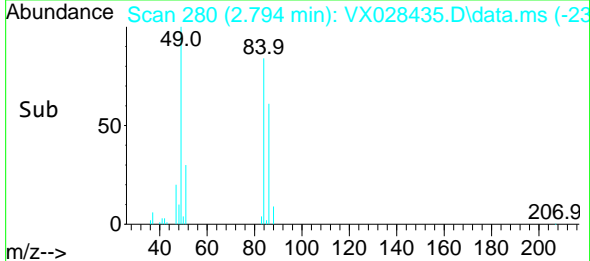
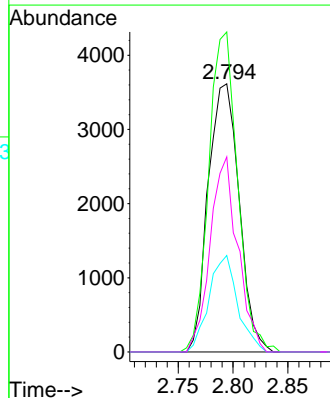
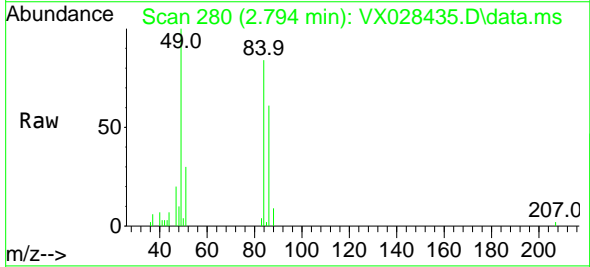
Instrument :
 MSVOA_X
 ClientSampleId :
 WC-2

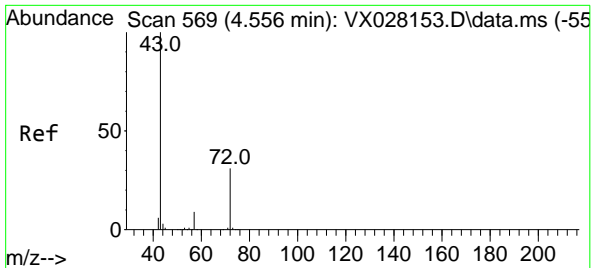
Tgt Ion: 43 Resp: 1899
 Ion Ratio Lower Upper
 43 100
 74 24.5 22.8 34.2



#20
 Methylene Chloride
 Concen: 1.783 ug/l
 RT: 2.794 min Scan# 280
 Delta R.T. 0.006 min
 Lab File: VX028435.D
 Acq: 29 Apr 2022 19:42

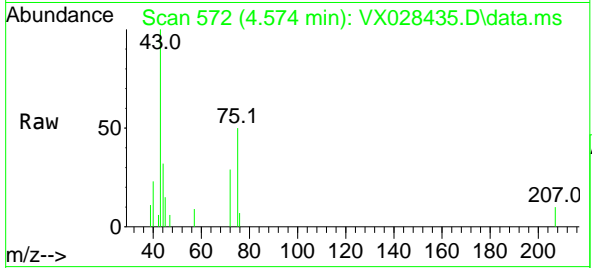
Tgt Ion: 84 Resp: 7097
 Ion Ratio Lower Upper
 84 100
 49 119.3 85.5 128.3
 51 36.0 26.6 39.8
 86 72.7 51.5 77.3



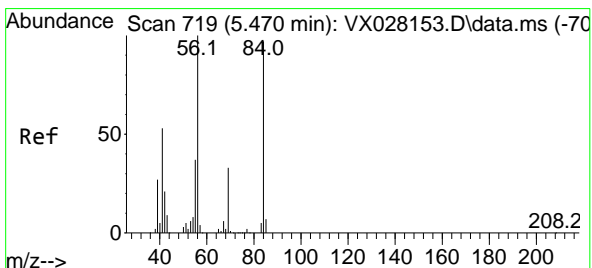
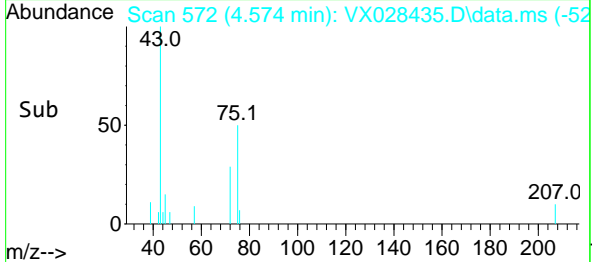
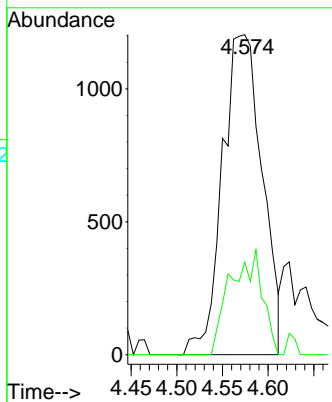


#25
 2-Butanone
 Concen: 1.149 ug/l
 RT: 4.574 min Scan# 51
 Delta R.T. 0.018 min
 Lab File: VX028435.D
 Acq: 29 Apr 2022 19:42

Instrument :
 MSVOA_X
 ClientSampleId :
 WC-2

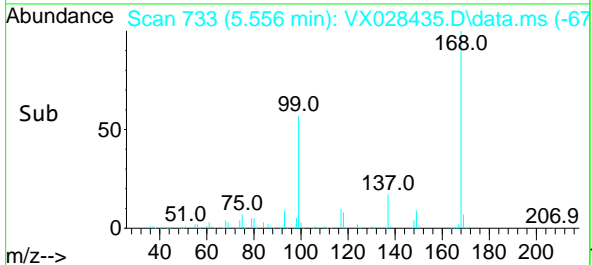
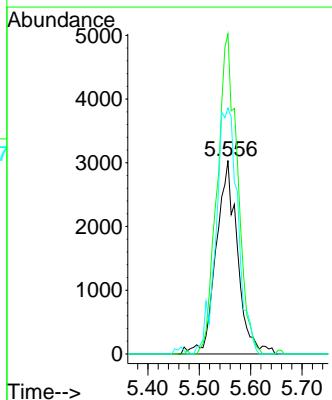
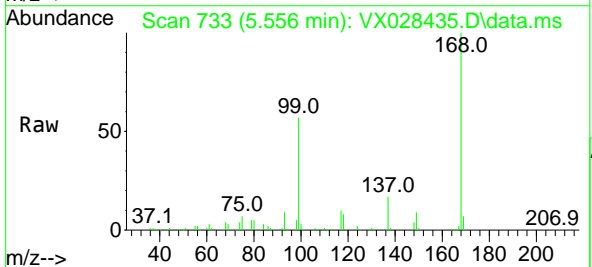


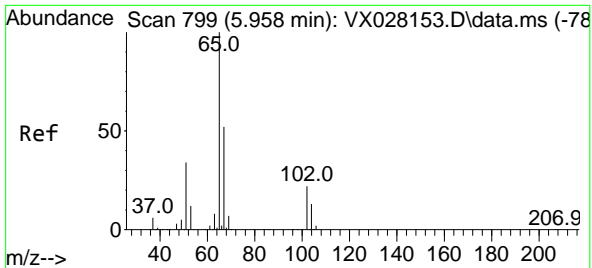
Tgt Ion: 43 Resp: 3652
 Ion Ratio Lower Upper
 43 100
 72 28.9 24.4 36.6



#31
 Cyclohexane
 Concen: 1.339 ug/l
 RT: 5.556 min Scan# 733
 Delta R.T. 0.086 min
 Lab File: VX028435.D
 Acq: 29 Apr 2022 19:42

Tgt Ion: 56 Resp: 8756
 Ion Ratio Lower Upper
 56 100
 69 165.4 26.7 40.1#
 84 127.1 77.2 115.8#

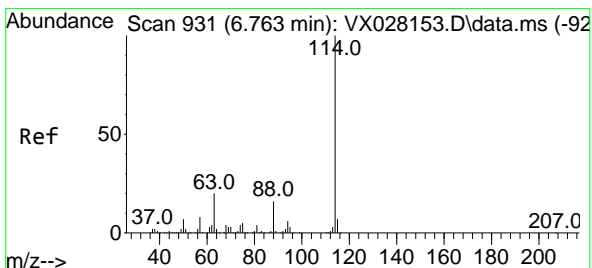
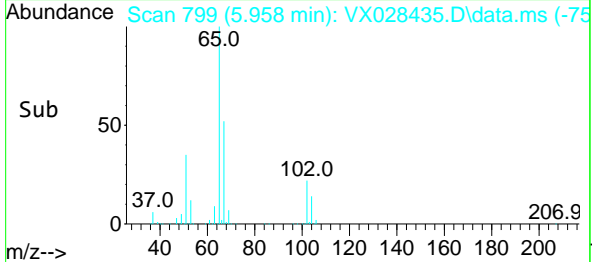
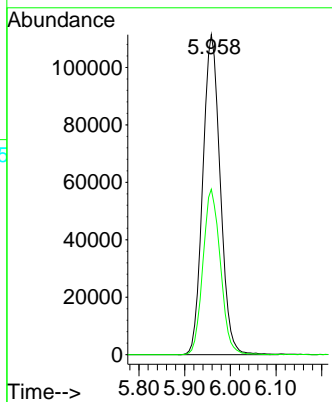
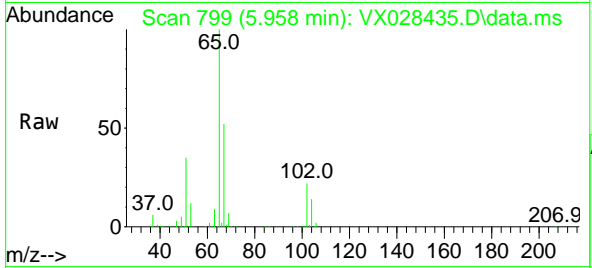




#33
 1,2-Dichloroethane-d4
 Concen: 55.054 ug/l
 RT: 5.958 min Scan# 799
 Delta R.T. 0.000 min
 Lab File: VX028435.D
 Acq: 29 Apr 2022 19:42

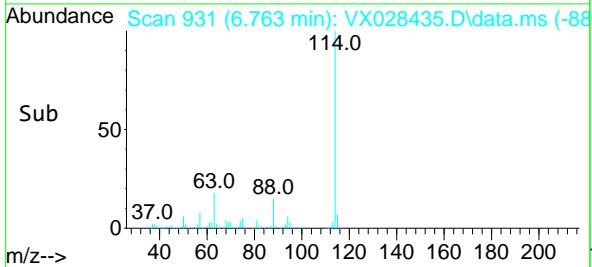
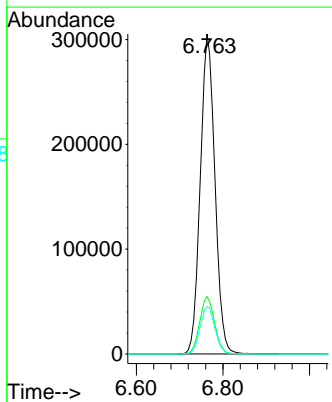
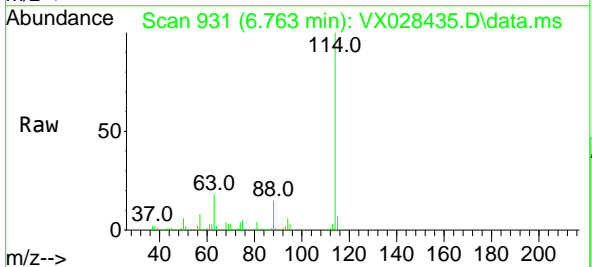
Instrument :
 MSVOA_X
 ClientSampleId :
 WC-2

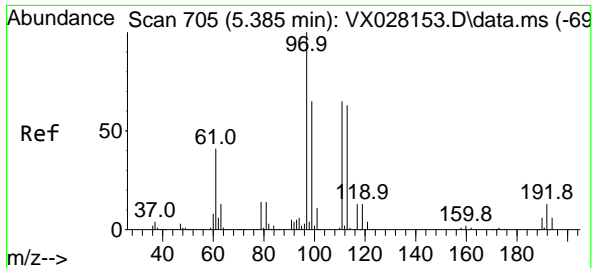
Tgt Ion: 65 Resp: 295415
 Ion Ratio Lower Upper
 65 100
 67 51.7 0.0 107.4



#34
 1,4-Difluorobenzene
 Concen: 50.000 ug/l
 RT: 6.763 min Scan# 931
 Delta R.T. -0.000 min
 Lab File: VX028435.D
 Acq: 29 Apr 2022 19:42

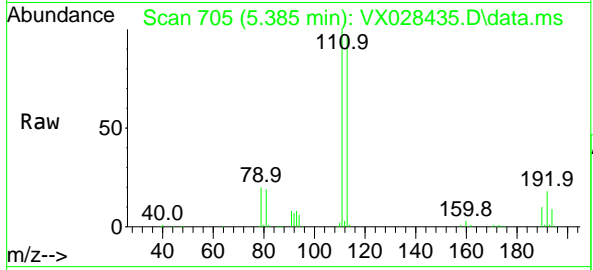
Tgt Ion: 114 Resp: 715109
 Ion Ratio Lower Upper
 114 100
 63 18.0 0.0 36.8
 88 14.7 0.0 32.4



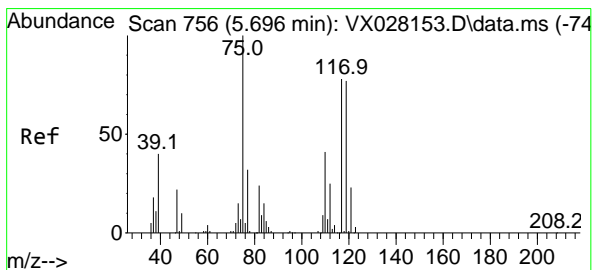
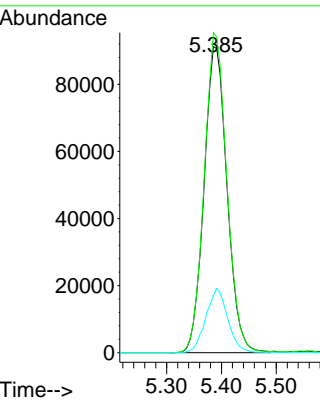
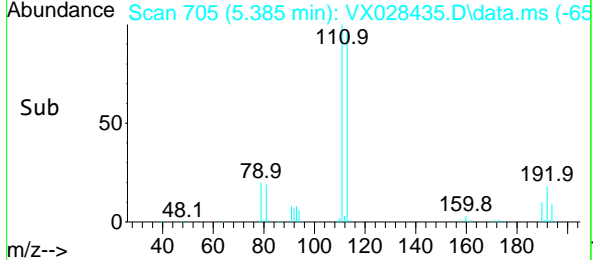


#35
 Dibromofluoromethane
 Concen: 53.149 ug/l
 RT: 5.385 min Scan# 705
 Delta R.T. 0.000 min
 Lab File: VX028435.D
 Acq: 29 Apr 2022 19:42

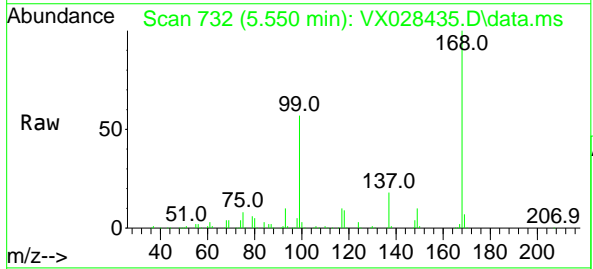
Instrument : MSVOA_X
 ClientSampleId : WC-2



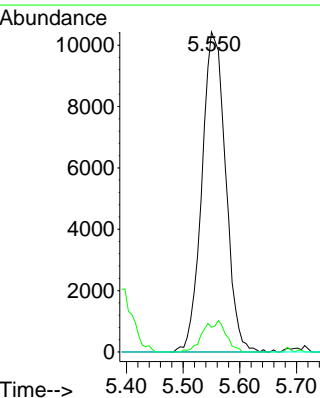
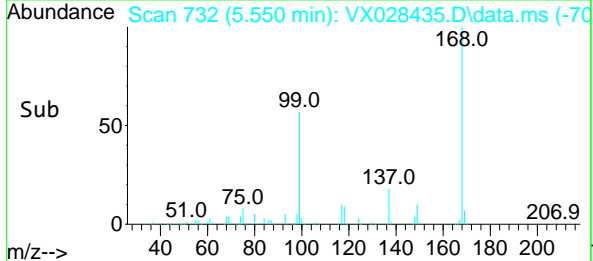
Tgt Ion:113 Resp: 266542
 Ion Ratio Lower Upper
 113 100
 111 102.8 82.8 124.2
 192 19.9 16.9 25.3

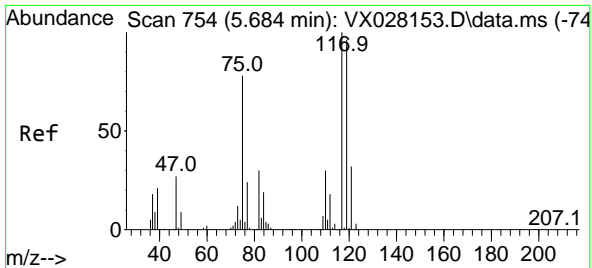


#36
 1,1-Dichloropropene
 Concen: 4.637 ug/l
 RT: 5.550 min Scan# 732
 Delta R.T. -0.146 min
 Lab File: VX028435.D
 Acq: 29 Apr 2022 19:42



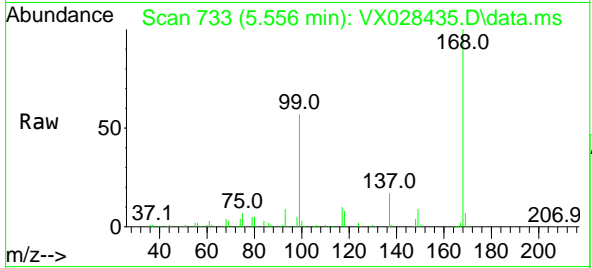
Tgt Ion: 75 Resp: 30333
 Ion Ratio Lower Upper
 75 100
 110 9.6 18.3 54.8#
 77 0.0 24.8 37.2#



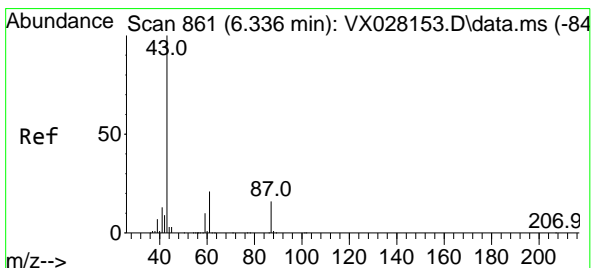
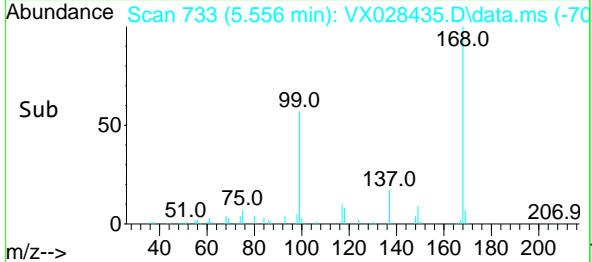
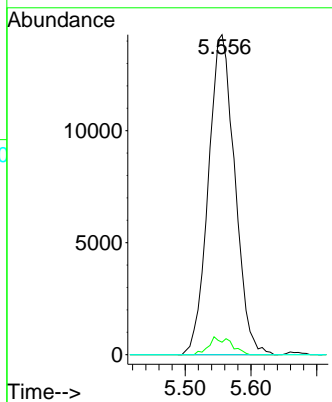


#38
 Carbon Tetrachloride
 Concen: 5.411 ug/l
 RT: 5.556 min Scan# 71
 Delta R.T. -0.128 min
 Lab File: VX028435.D
 Acq: 29 Apr 2022 19:42

Instrument : MSVOA_X
 ClientSampleId : WC-2

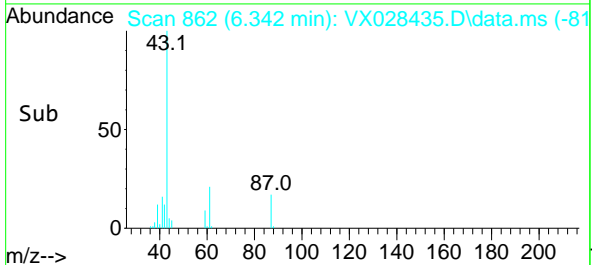
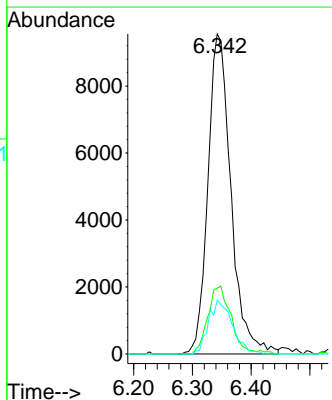
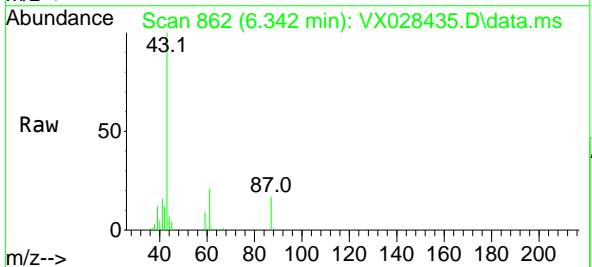


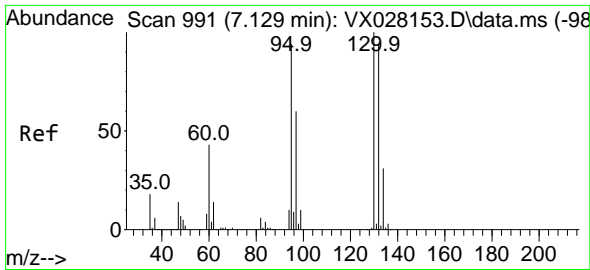
Tgt Ion: 117 Resp: 39958
 Ion Ratio Lower Upper
 117 100
 119 3.9 77.3 115.9#
 121 0.0 24.2 36.2#



#43
 Isopropyl Acetate
 Concen: 2.408 ug/l
 RT: 6.342 min Scan# 862
 Delta R.T. 0.006 min
 Lab File: VX028435.D
 Acq: 29 Apr 2022 19:42

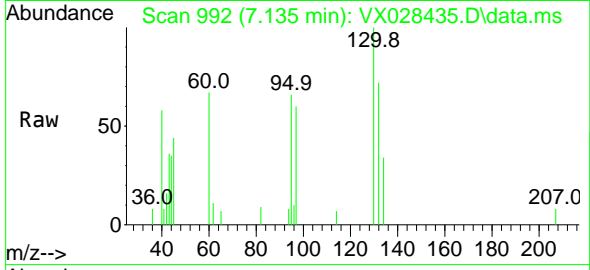
Tgt Ion: 43 Resp: 26016
 Ion Ratio Lower Upper
 43 100
 61 21.1 18.5 27.7
 87 17.3 13.0 19.6



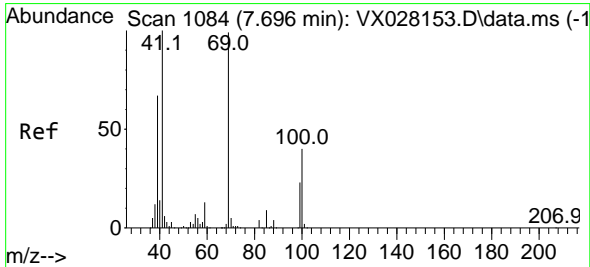
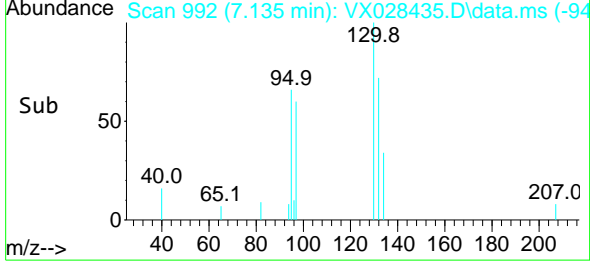
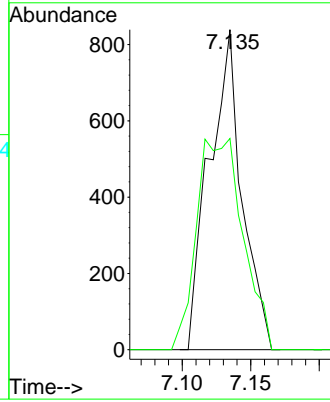


#44
 Trichloroethene
 Concen: 0.251 ug/l
 RT: 7.135 min Scan# 94
 Delta R.T. 0.006 min
 Lab File: VX028435.D
 Acq: 29 Apr 2022 19:42

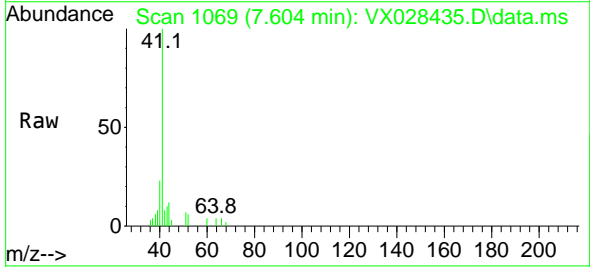
Instrument :
 MSVOA_X
 ClientSampleId :
 WC-2



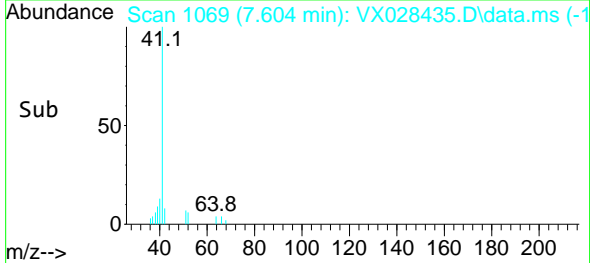
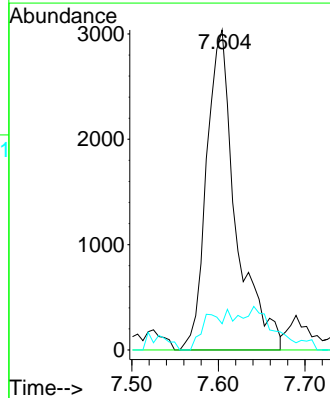
Tgt Ion: 130 Resp: 1395
 Ion Ratio Lower Upper
 130 100
 95 66.0 0.0 188.8

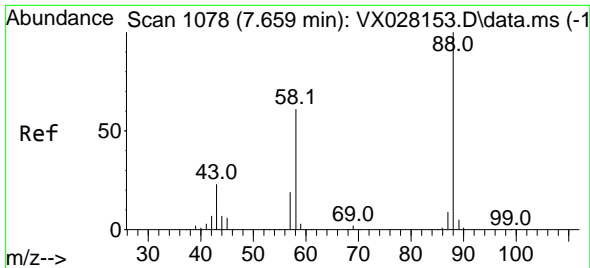


#48
 Methyl methacrylate
 Concen: 1.439 ug/l
 RT: 7.604 min Scan# 1069
 Delta R.T. -0.092 min
 Lab File: VX028435.D
 Acq: 29 Apr 2022 19:42



Tgt Ion: 41 Resp: 7139
 Ion Ratio Lower Upper
 41 100
 69 0.0 82.5 123.7#
 39 0.0 43.8 65.8#

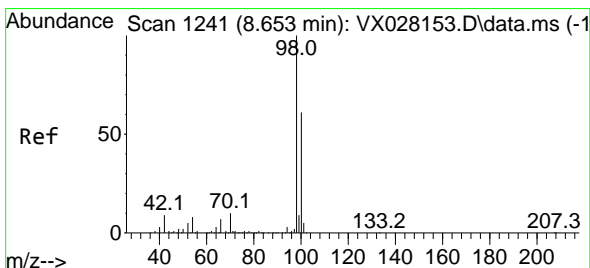
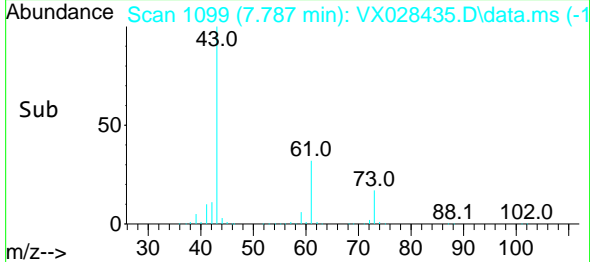
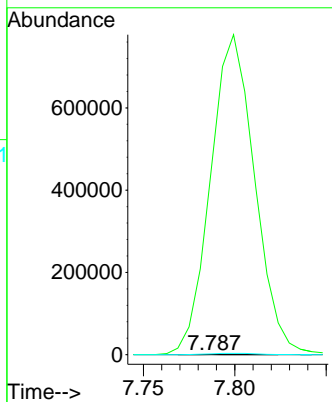
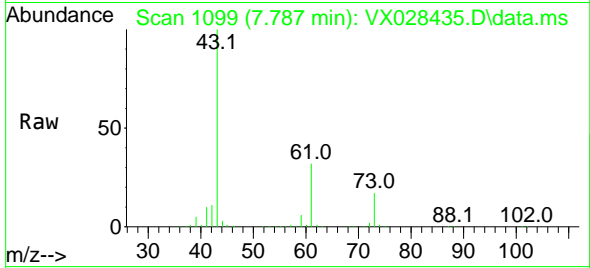




#49
 1,4-Dioxane
 Concen: 2.065 ug/l
 RT: 7.787 min Scan# 1099
 Delta R.T. 0.128 min
 Lab File: VX028435.D
 Acq: 29 Apr 2022 19:42

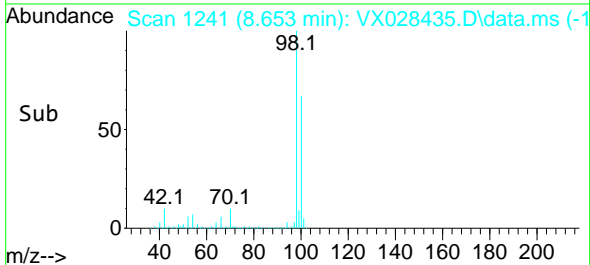
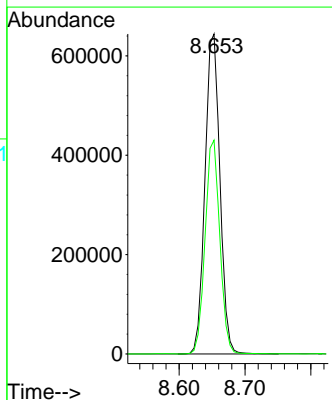
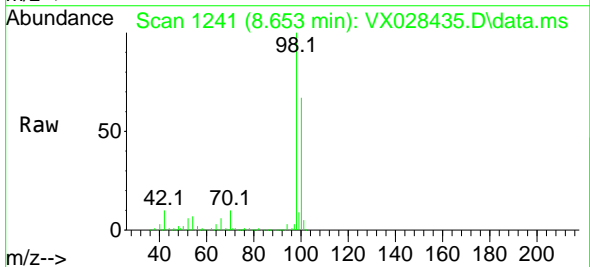
Instrument : MSVOA_X
 ClientSampleId : WC-2

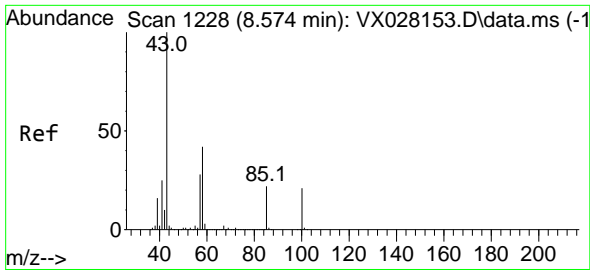
Tgt Ion: 88 Resp: 274
 Ion Ratio Lower Upper
 88 100
 43 481717.5 21.9 32.9#
 58 2234.3 53.7 80.5#



#50
 Toluene-d8
 Concen: 52.888 ug/l
 RT: 8.653 min Scan# 1241
 Delta R.T. -0.000 min
 Lab File: VX028435.D
 Acq: 29 Apr 2022 19:42

Tgt Ion: 98 Resp: 1018701
 Ion Ratio Lower Upper
 98 100
 100 65.9 52.6 78.8

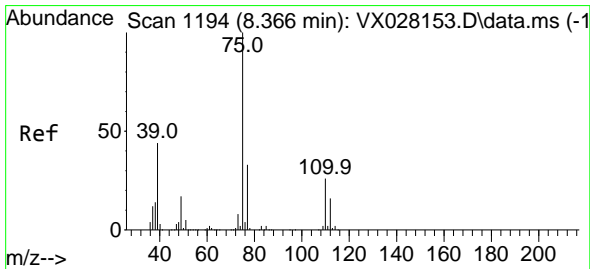
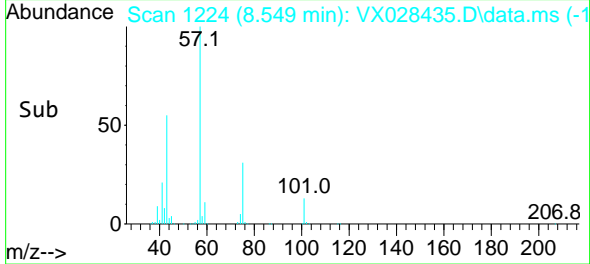
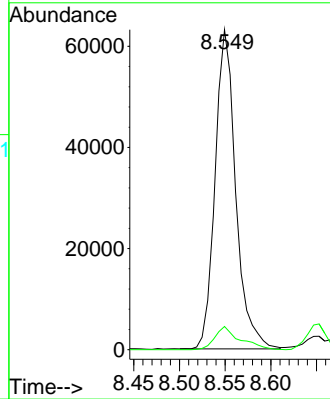
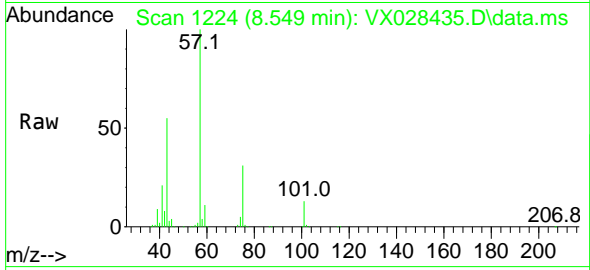




#51
 4-Methyl-2-Pentanone
 Concen: 14.313 ug/l
 RT: 8.549 min Scan# 1124
 Delta R.T. -0.025 min
 Lab File: VX028435.D
 Acq: 29 Apr 2022 19:42

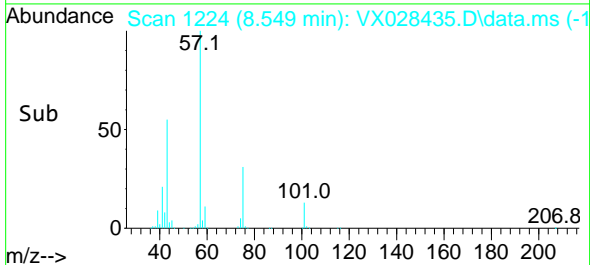
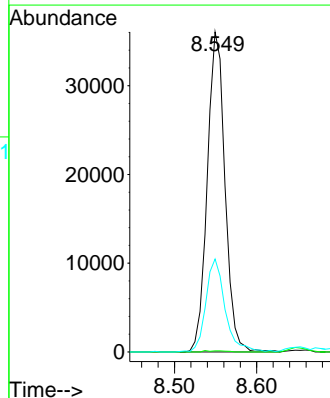
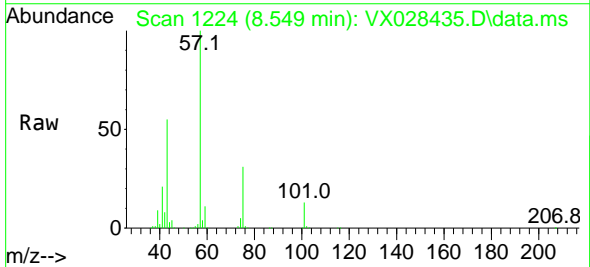
Instrument : MSVOA_X
 ClientSampleId : WC-2

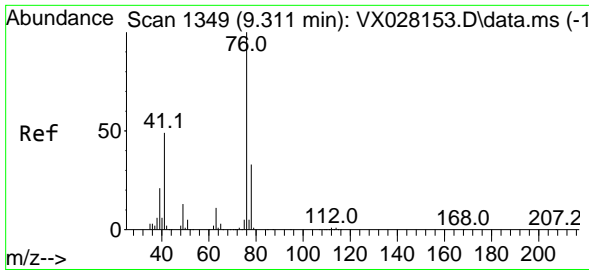
Tgt Ion: 43 Resp: 99223
 Ion Ratio Lower Upper
 43 100
 58 8.8 36.1 54.1#



#54
 cis-1,3-Dichloropropene
 Concen: 6.689 ug/l
 RT: 8.549 min Scan# 1224
 Delta R.T. 0.183 min
 Lab File: VX028435.D
 Acq: 29 Apr 2022 19:42

Tgt Ion: 75 Resp: 53947
 Ion Ratio Lower Upper
 75 100
 77 0.4 24.8 37.2#
 39 28.9 29.6 44.4#

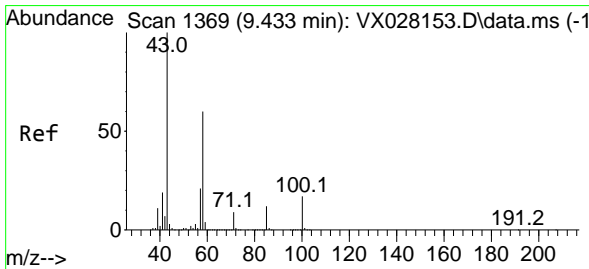
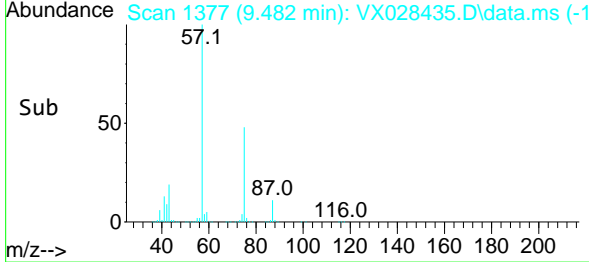
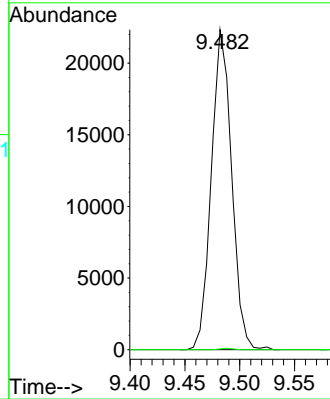
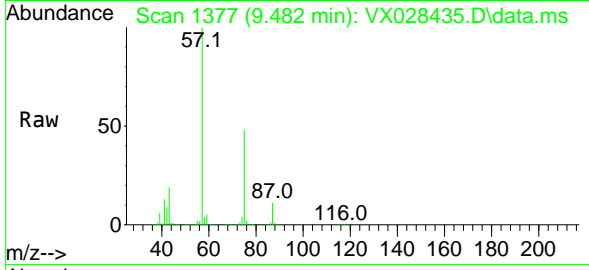




#57
 1,3-Dichloropropane
 Concen: 3.299 ug/l
 RT: 9.482 min Scan# 1377
 Delta R.T. 0.171 min
 Lab File: VX028435.D
 Acq: 29 Apr 2022 19:42

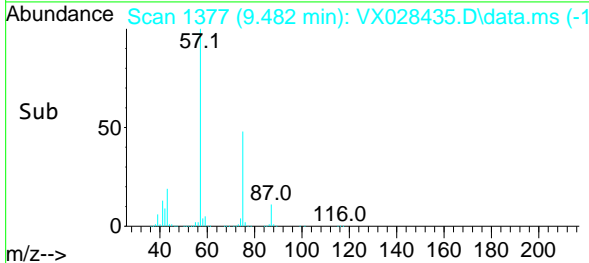
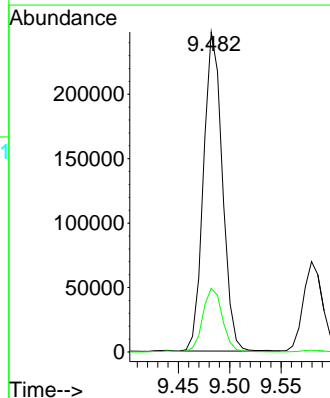
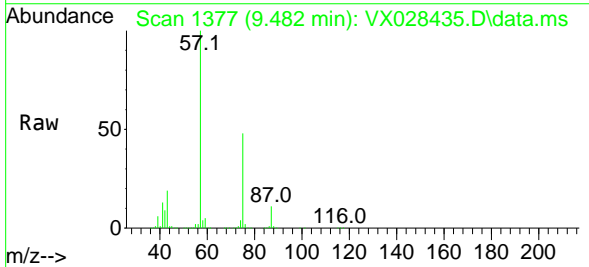
Instrument : MSVOA_X
 ClientSampleId : WC-2

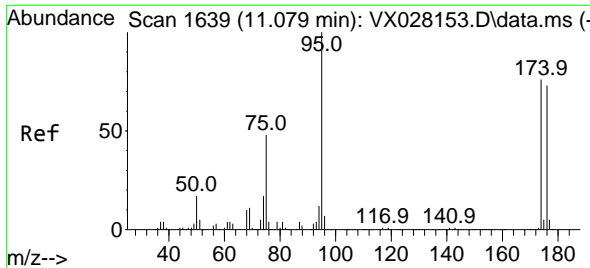
Tgt Ion: 76 Resp: 28783
 Ion Ratio Lower Upper
 76 100
 78 0.3 25.8 38.8#



#59
 2-Hexanone
 Concen: 58.918 ug/l
 RT: 9.482 min Scan# 1377
 Delta R.T. 0.049 min
 Lab File: VX028435.D
 Acq: 29 Apr 2022 19:42

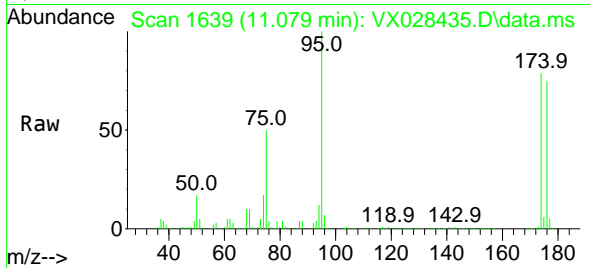
Tgt Ion: 43 Resp: 316384
 Ion Ratio Lower Upper
 43 100
 58 20.7 31.9 95.7#



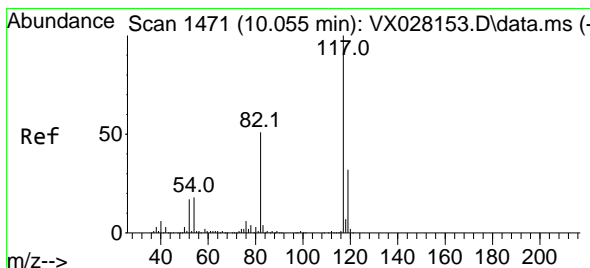
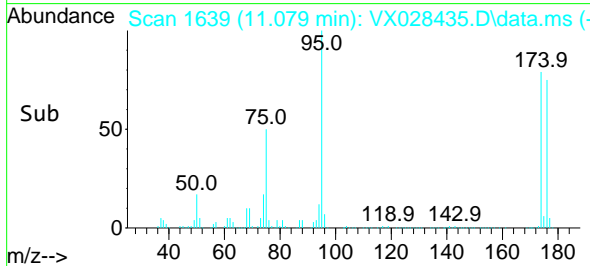
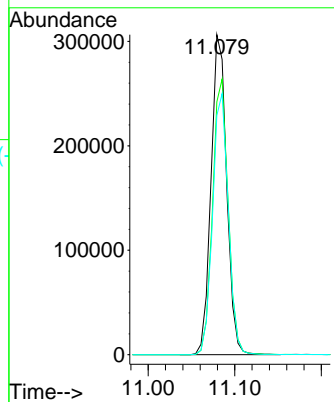


#62
 4-Bromofluorobenzene
 Concen: 52.042 ug/l
 RT: 11.079 min Scan# 1639
 Delta R.T. 0.000 min
 Lab File: VX028435.D
 Acq: 29 Apr 2022 19:42

Instrument : MSVOA_X
 ClientSampleId : WC-2

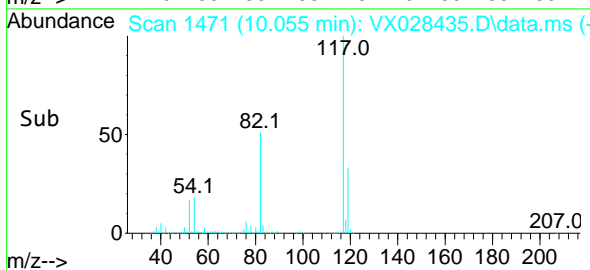
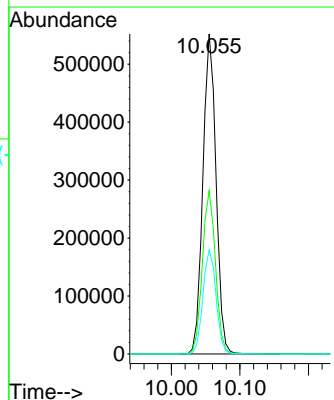
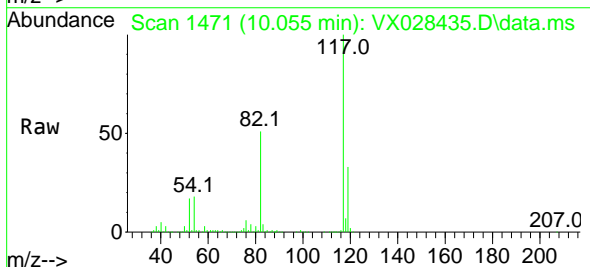


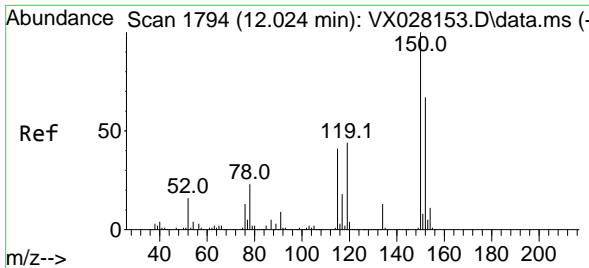
Tgt Ion: 95 Resp: 383280
 Ion Ratio Lower Upper
 95 100
 174 86.2 0.0 163.0
 176 82.5 0.0 155.0



#63
 Chlorobenzene-d5
 Concen: 50.000 ug/l
 RT: 10.055 min Scan# 1471
 Delta R.T. 0.000 min
 Lab File: VX028435.D
 Acq: 29 Apr 2022 19:42

Tgt Ion: 117 Resp: 739069
 Ion Ratio Lower Upper
 117 100
 82 51.0 41.8 62.8
 119 32.6 24.8 37.2

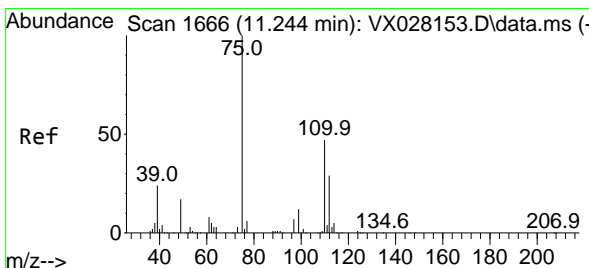
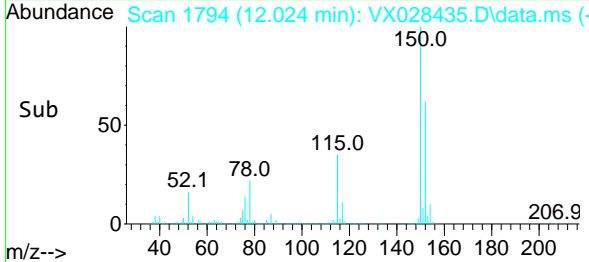
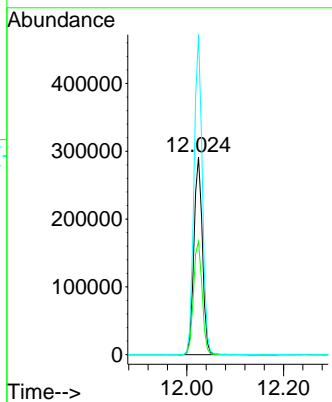
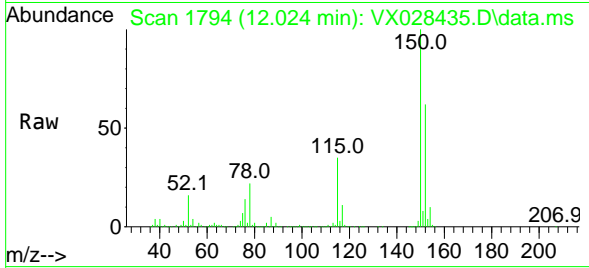




#72
 1,4-Dichlorobenzene-d4
 Concen: 50.000 ug/l
 RT: 12.024 min Scan# 11
 Delta R.T. 0.000 min
 Lab File: VX028435.D
 Acq: 29 Apr 2022 19:42

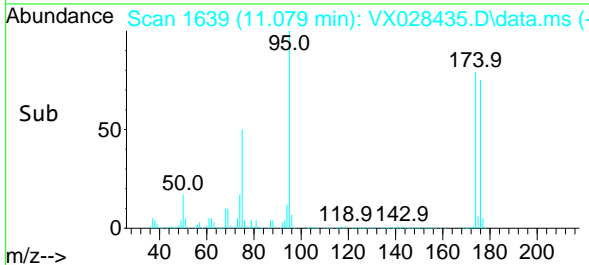
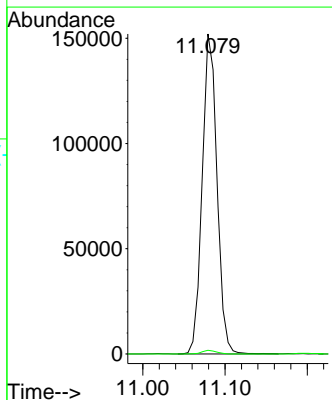
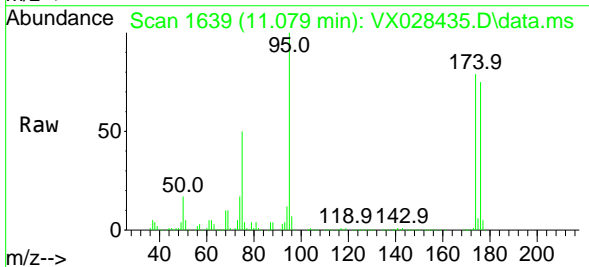
Instrument : MSVOA_X
 ClientSampleId : WC-2

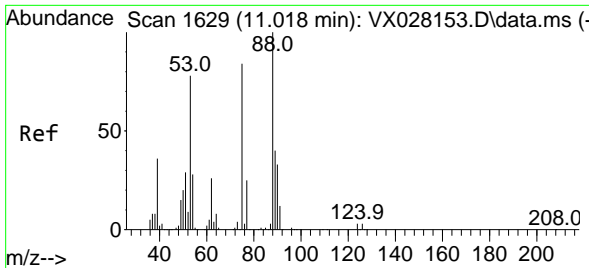
Tgt Ion	Resp	Lower	Upper
152	352366	100	
115	58.3	37.5	112.7
150	158.6	0.0	338.2



#76
 1,2,3-Trichloropropane
 Concen: 27.399 ug/l
 RT: 11.079 min Scan# 1639
 Delta R.T. -0.165 min
 Lab File: VX028435.D
 Acq: 29 Apr 2022 19:42

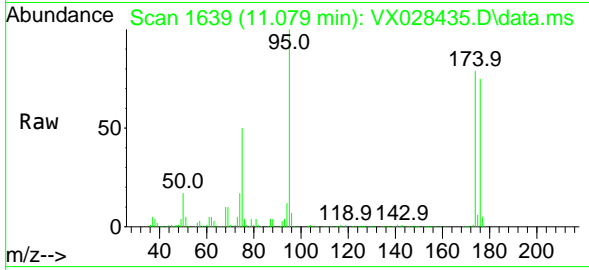
Tgt Ion	Resp	Lower	Upper
75	190005	100	
77	1.1	19.4	58.2#



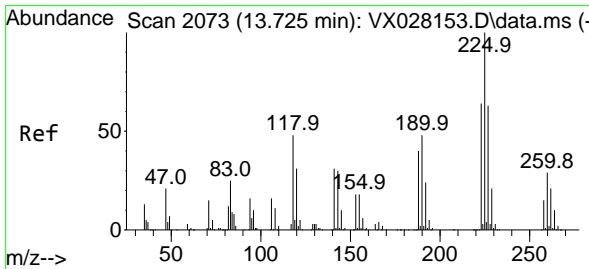
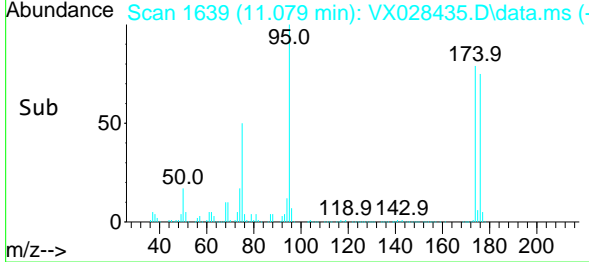
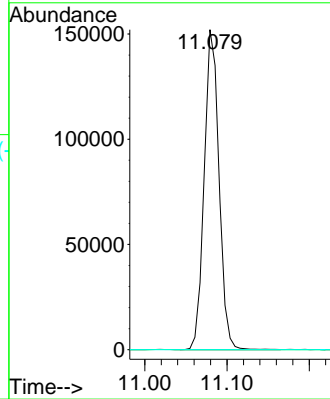


#81
 trans-1,4-Dichloro-2-butene
 Concen: 81.422 ug/l
 RT: 11.079 min Scan# 1639
 Delta R.T. 0.061 min
 Lab File: VX028435.D
 Acq: 29 Apr 2022 19:42

Instrument : MSVOA_X
 ClientSampleId : WC-2



Tgt Ion: 75 Resp: 190005
 Ion Ratio Lower Upper
 75 100
 53 0.0 69.0 103.4#
 89 0.0 37.0 55.6#



#94
 Hexachlorobutadiene
 Concen: 0.228 ug/l
 RT: 13.725 min Scan# 2073
 Delta R.T. 0.000 min
 Lab File: VX028435.D
 Acq: 29 Apr 2022 19:42

Tgt Ion: 225 Resp: 711
 Ion Ratio Lower Upper
 225 100
 223 67.2 34.2 102.5
 227 54.4 33.9 101.7

