

Data Path : Z:\voasrv\HPCHEM1\MSVOA_X\Data\VX042922\
 Data File : VX028437.D
 Acq On : 29 Apr 2022 20:28
 Operator : JC/MD
 Sample : N2609-11
 Misc : 5.0mL/MSVOA_X/WATER
 ALS Vial : 27 Sample Multiplier: 1

Instrument :
 MSVOA_X
 ClientSampleId :
 WC-4

Quant Time: Apr 30 09:18:34 2022
 Quant Method : Z:\voasrv\HPCHEM1\MSVOA_X\Method\82X041922W.M
 Quant Title : SW846 8260
 QLast Update : Tue Apr 19 13:38:04 2022
 Response via : Initial Calibration

Compound	R.T.	QIon	Response	Conc	Units	Dev(Min)

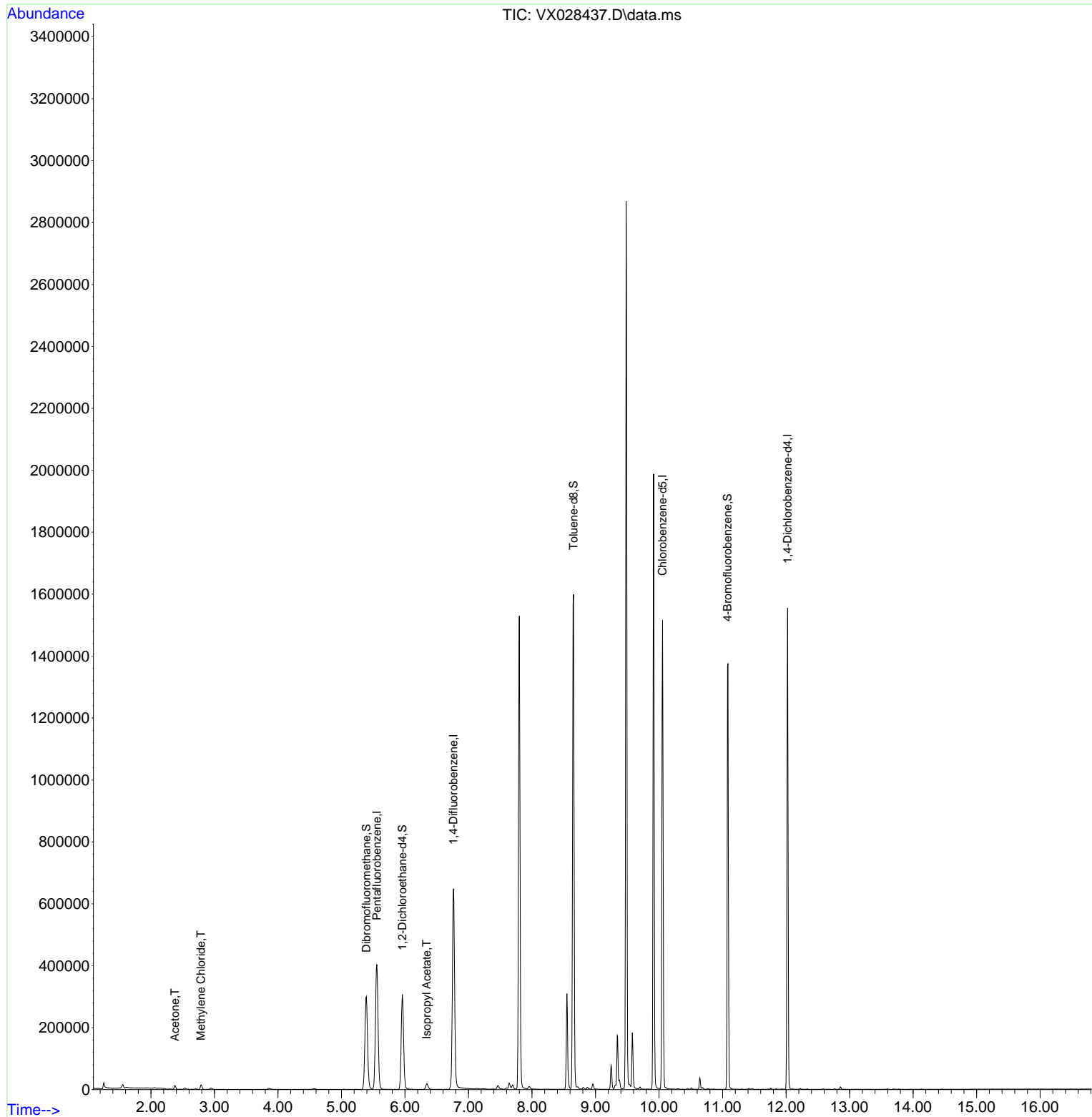
Internal Standards						
1) Pentafluorobenzene	5.556	168	392653	50.000	ug/l	0.00
34) 1,4-Difluorobenzene	6.763	114	687414	50.000	ug/l	0.00
63) Chlorobenzene-d5	10.055	117	710369	50.000	ug/l	0.00
72) 1,4-Dichlorobenzene-d4	12.024	152	326478	50.000	ug/l	0.00
System Monitoring Compounds						
33) 1,2-Dichloroethane-d4	5.958	65	289748	56.594	ug/l	0.00
Spiked Amount	50.000	Range	61 - 141	Recovery	=	113.180%
35) Dibromofluoromethane	5.391	113	259956	53.924	ug/l	0.00
Spiked Amount	50.000	Range	69 - 133	Recovery	=	107.840%
50) Toluene-d8	8.653	98	988835	53.405	ug/l	0.00
Spiked Amount	50.000	Range	65 - 126	Recovery	=	106.820%
62) 4-Bromofluorobenzene	11.079	95	365837	51.675	ug/l	0.00
Spiked Amount	50.000	Range	58 - 135	Recovery	=	103.340%
Target Compounds						
					Qvalue	
16) Acetone	2.380	43	13686	7.397	ug/l	95
20) Methylene Chloride	2.788	84	7145	1.881	ug/l	95
43) Isopropyl Acetate	6.342	43	25310	2.437	ug/l	97

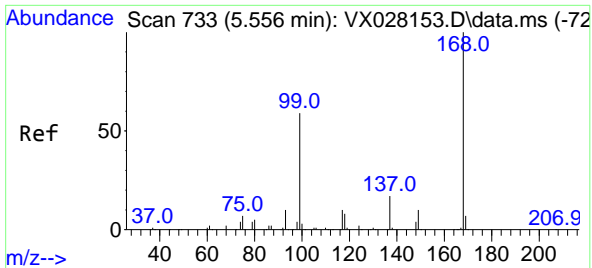
(#) = qualifier out of range (m) = manual integration (+) = signals summed

Data Path : Z:\voasrv\HPCHEM1\MSVOA_X\Data\VX042922\
Data File : VX028437.D
Acq On : 29 Apr 2022 20:28
Operator : JC/MD
Sample : N2609-11
Misc : 5.0mL/MSVOA_X/WATER
ALS Vial : 27 Sample Multiplier: 1

Instrument :
MSVOA_X
ClientSampleId :
WC-4

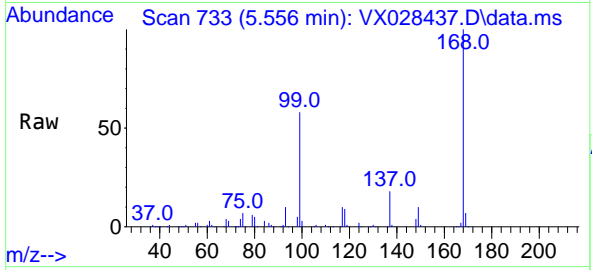
Quant Time: Apr 30 09:18:34 2022
Quant Method : Z:\voasrv\HPCHEM1\MSVOA_X\Method\82X041922W.M
Quant Title : SW846 8260
QLast Update : Tue Apr 19 13:38:04 2022
Response via : Initial Calibration



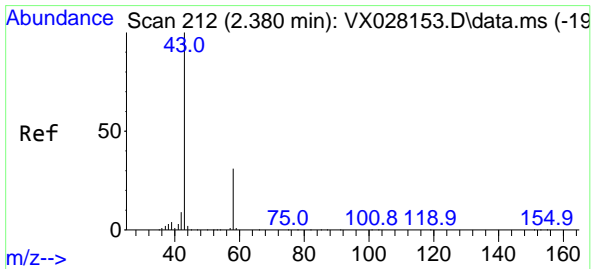
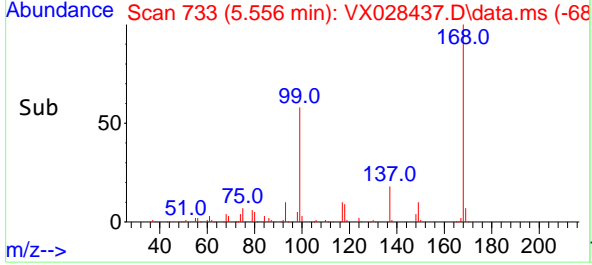
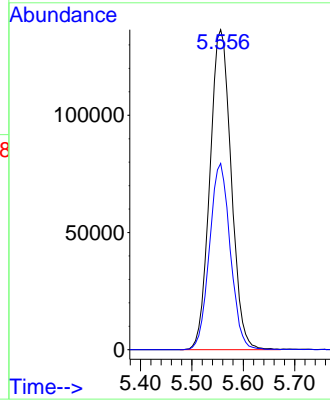


#1
 Pentafluorobenzene
 Concen: 50.000 ug/l
 RT: 5.556 min Scan# 71
 Delta R.T. -0.000 min
 Lab File: VX028437.D
 Acq: 29 Apr 2022 20:28

Instrument :
 MSVOA_X
 ClientSampleId :
 WC-4

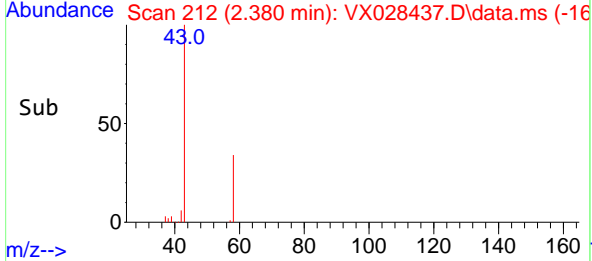
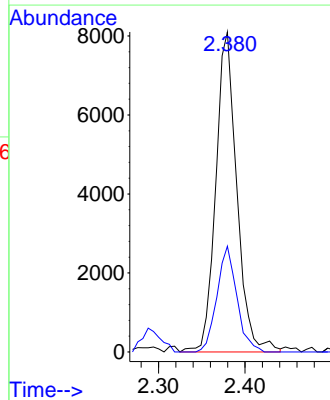
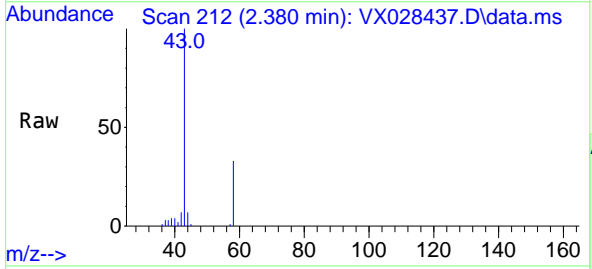


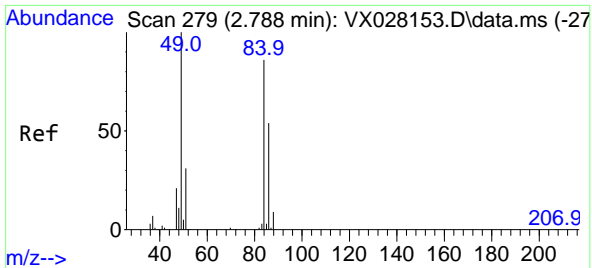
Tgt Ion:168 Resp: 392653
 Ion Ratio Lower Upper
 168 100
 99 58.2 41.7 62.5



#16
 Acetone
 Concen: 7.397 ug/l
 RT: 2.380 min Scan# 212
 Delta R.T. -0.000 min
 Lab File: VX028437.D
 Acq: 29 Apr 2022 20:28

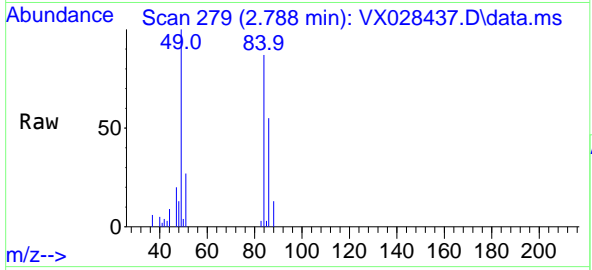
Tgt Ion: 43 Resp: 13686
 Ion Ratio Lower Upper
 43 100
 58 33.1 28.8 43.2





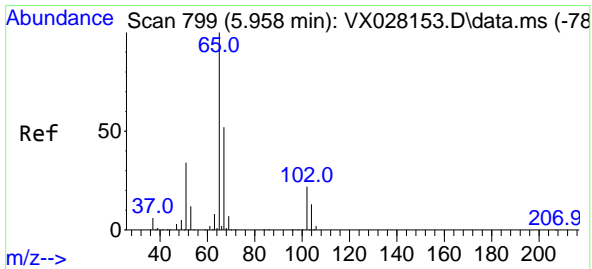
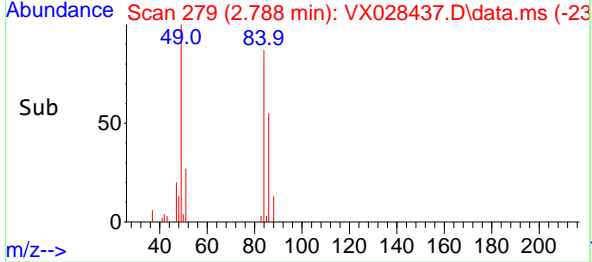
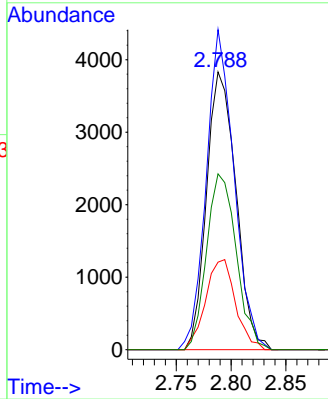
#20
 Methylene Chloride
 Concen: 1.881 ug/l
 RT: 2.788 min Scan# 21
 Delta R.T. 0.000 min
 Lab File: VX028437.D
 Acq: 29 Apr 2022 20:28

Instrument :
 MSVOA_X
 ClientSampleId :
 WC-4



Tgt Ion: 84 Resp: 7145

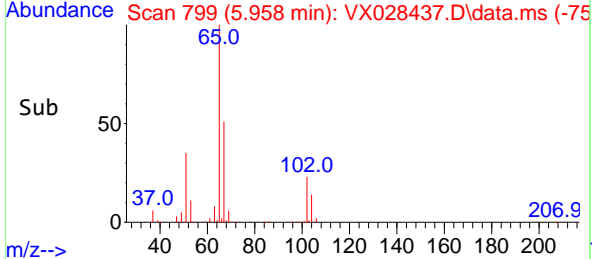
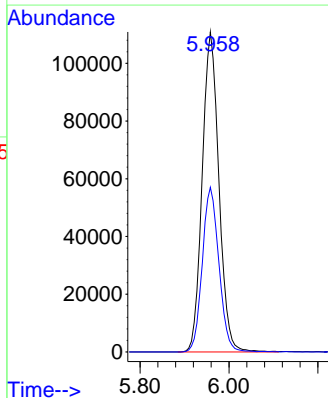
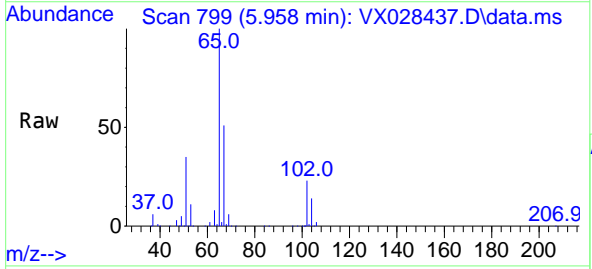
Ion	Ratio	Lower	Upper
84	100		
49	115.2	85.5	128.3
51	31.5	26.6	39.8
86	63.3	51.5	77.3

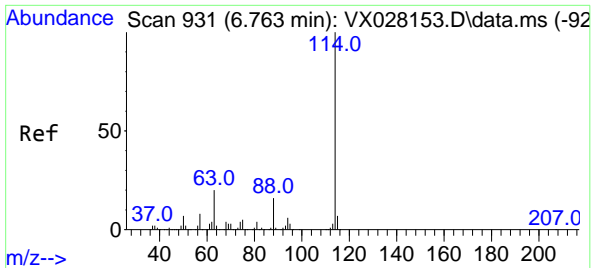


#33
 1,2-Dichloroethane-d4
 Concen: 56.594 ug/l
 RT: 5.958 min Scan# 799
 Delta R.T. 0.000 min
 Lab File: VX028437.D
 Acq: 29 Apr 2022 20:28

Tgt Ion: 65 Resp: 289748

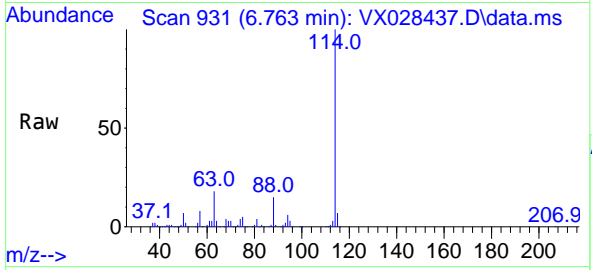
Ion	Ratio	Lower	Upper
65	100		
67	51.2	0.0	107.4



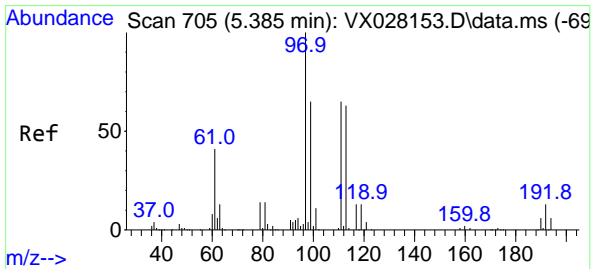
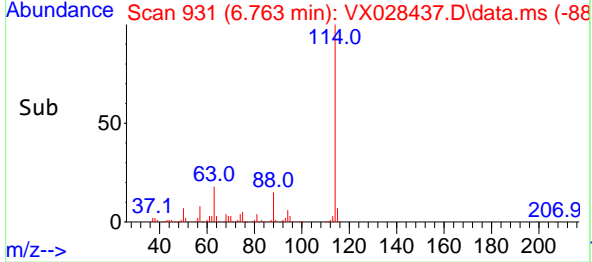
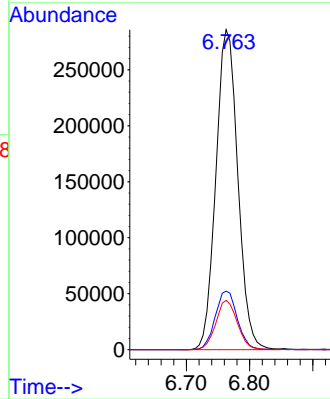


#34
 1,4-Difluorobenzene
 Concen: 50.000 ug/l
 RT: 6.763 min Scan# 91
 Delta R.T. -0.000 min
 Lab File: VX028437.D
 Acq: 29 Apr 2022 20:28

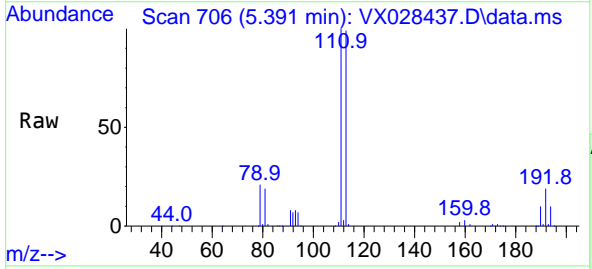
Instrument : MSVOA_X
 ClientSampleId : WC-4



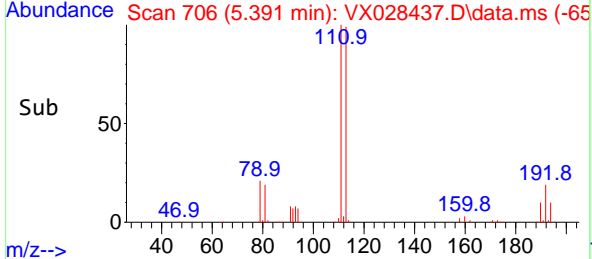
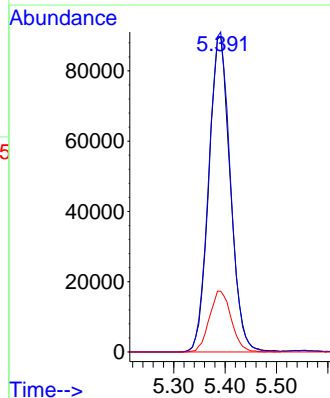
Tgt Ion:114 Resp: 687414
 Ion Ratio Lower Upper
 114 100
 63 18.3 0.0 36.8
 88 15.4 0.0 32.4

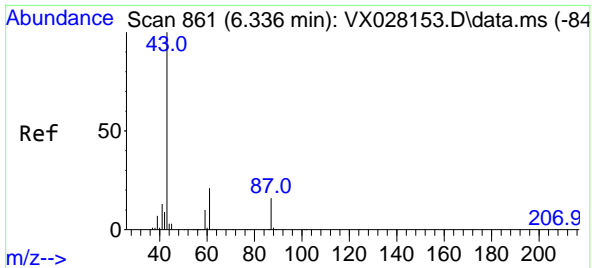


#35
 Dibromofluoromethane
 Concen: 53.924 ug/l
 RT: 5.391 min Scan# 706
 Delta R.T. 0.006 min
 Lab File: VX028437.D
 Acq: 29 Apr 2022 20:28



Tgt Ion:113 Resp: 259956
 Ion Ratio Lower Upper
 113 100
 111 102.3 82.8 124.2
 192 19.6 16.9 25.3



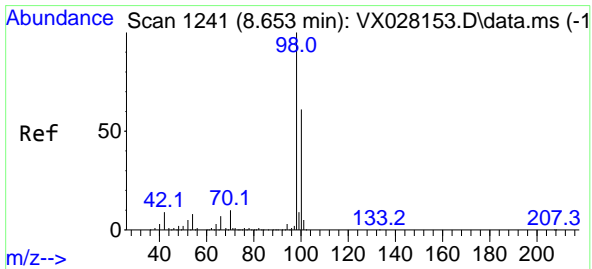
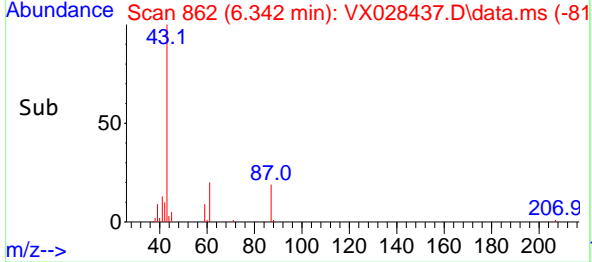
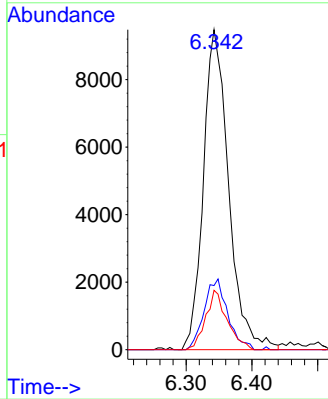
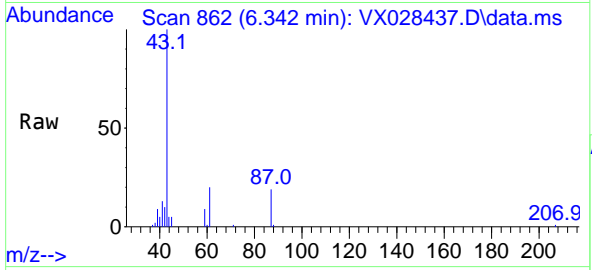


#43
 Isopropyl Acetate
 Concen: 2.437 ug/l
 RT: 6.342 min Scan# 862
 Delta R.T. 0.006 min
 Lab File: VX028437.D
 Acq: 29 Apr 2022 20:28

Instrument : MSVOA_X
 ClientSampleId : WC-4

Tgt Ion: 43 Resp: 25310

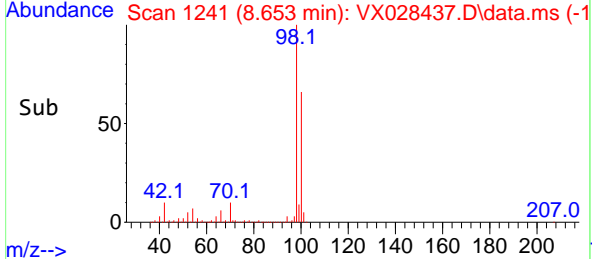
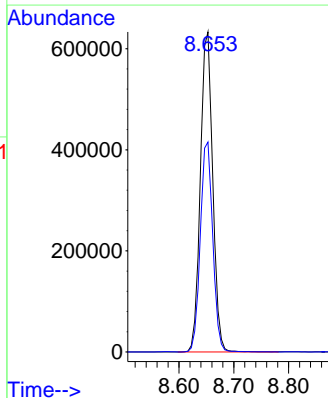
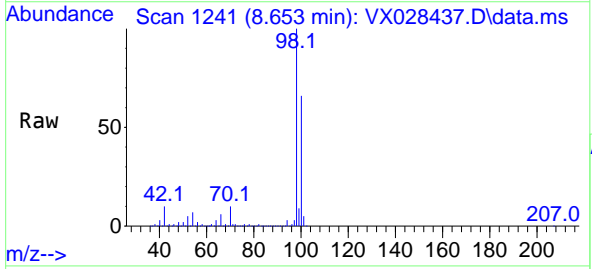
Ion	Ratio	Lower	Upper
43	100		
61	20.6	18.5	27.7
87	15.8	13.0	19.6

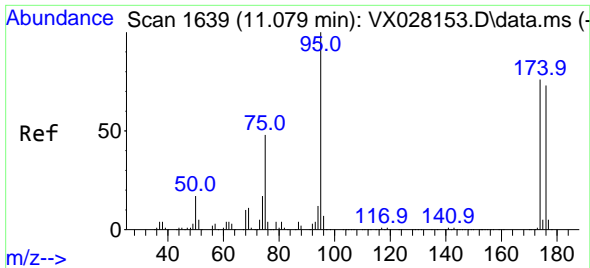


#50
 Toluene-d8
 Concen: 53.405 ug/l
 RT: 8.653 min Scan# 1241
 Delta R.T. -0.000 min
 Lab File: VX028437.D
 Acq: 29 Apr 2022 20:28

Tgt Ion: 98 Resp: 988835

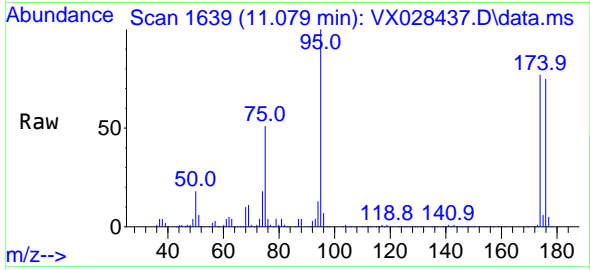
Ion	Ratio	Lower	Upper
98	100		
100	66.1	52.6	78.8



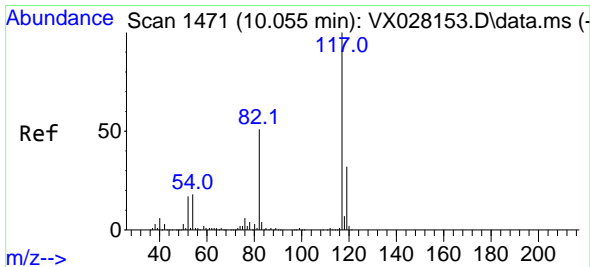
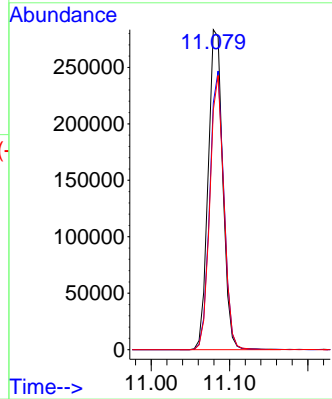
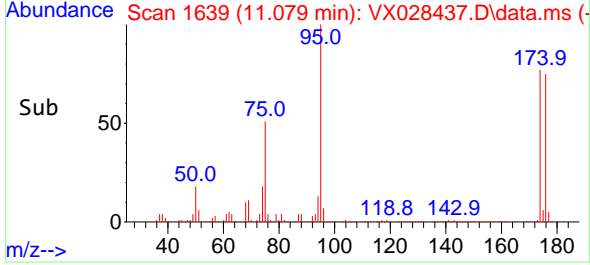


#62
 4-Bromofluorobenzene
 Concen: 51.675 ug/l
 RT: 11.079 min Scan# 1
 Delta R.T. 0.000 min
 Lab File: VX028437.D
 Acq: 29 Apr 2022 20:28

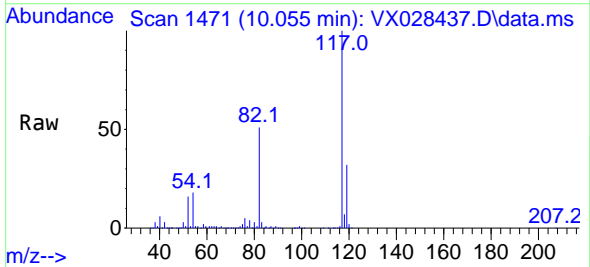
Instrument :
 MSVOA_X
 ClientSampleId :
 WC-4



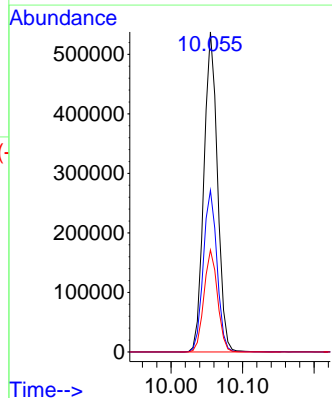
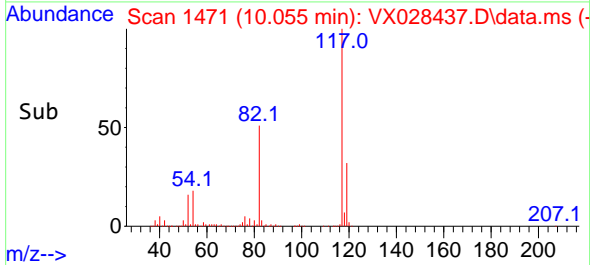
Tgt Ion: 95 Resp: 365837
 Ion Ratio Lower Upper
 95 100
 174 84.4 0.0 163.0
 176 82.4 0.0 155.0

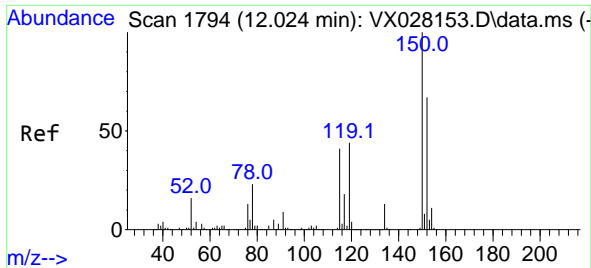


#63
 Chlorobenzene-d5
 Concen: 50.000 ug/l
 RT: 10.055 min Scan# 1471
 Delta R.T. 0.000 min
 Lab File: VX028437.D
 Acq: 29 Apr 2022 20:28



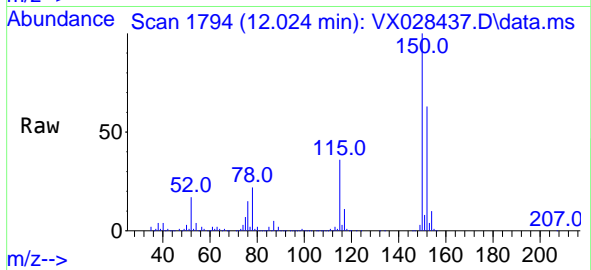
Tgt Ion: 117 Resp: 710369
 Ion Ratio Lower Upper
 117 100
 82 50.5 41.8 62.8
 119 31.9 24.8 37.2





#72
 1,4-Dichlorobenzene-d4
 Concen: 50.000 ug/l
 RT: 12.024 min Scan# 11
 Delta R.T. 0.000 min
 Lab File: VX028437.D
 Acq: 29 Apr 2022 20:28

Instrument :
 MSVOA_X
 ClientSampleId :
 WC-4



Tgt Ion:152 Resp: 326478

Ion	Ratio	Lower	Upper
152	100		
115	57.3	37.5	112.7
150	157.7	0.0	338.2

