

Data Path : Z:\voasrv\HPCHEM1\MSVOA_X\Data\VX042923\
 Data File : VX035416.D
 Acq On : 29 Apr 2023 12:13
 Operator : JC/MD
 Sample : VX0429MBL01
 Misc : 5.00g/10mL/100uL/5.00mL/MSVOA_X/MEOH
 ALS Vial : 3 Sample Multiplier: 1

Instrument :
 MSVOA_X
 ClientSampleId :
 VX0429MBL01

Integration Parameters: RTEINT.P

Integrator: RTE
 Smoothing : ON Filtering: 5
 Sampling : 1 Min Area: 3 % of largest Peak
 Start Thrs: 0.2 Max Peaks: 100
 Stop Thrs : 0 Peak Location: TOP

If leading or trailing edge < 100 prefer < Baseline drop else tangent >
 Peak separation: 5

Method : Z:\voasrv\HPCHEM1\MSVOA_X\Method\82X042523W.M
 Title : SW846 8260

Signal : TIC: VX035416.D\data.ms

peak #	R.T. min	first scan	max scan	last scan	PK TY	peak height	corr. area	corr. % max.	% of total
1	5.385	692	705	720	rBV2	145178	429450	33.13%	6.205%
2	5.544	720	731	750	rVB	259863	745398	57.51%	10.770%
3	5.952	788	798	818	rBV2	151643	410805	31.69%	5.936%
4	6.757	919	930	947	rBV	401166	956541	73.80%	13.821%
5	8.647	1233	1240	1250	rBV	836417	1296162	100.00%	18.728%
6	10.049	1465	1470	1490	rBV	799374	1134032	87.49%	16.385%
7	11.079	1634	1639	1650	rBV	703105	884345	68.23%	12.778%
8	12.018	1788	1793	1806	rBV	799484	1046554	80.74%	15.121%
9	13.725	2068	2073	2077	rBV2	14756	17745	1.37%	0.256%

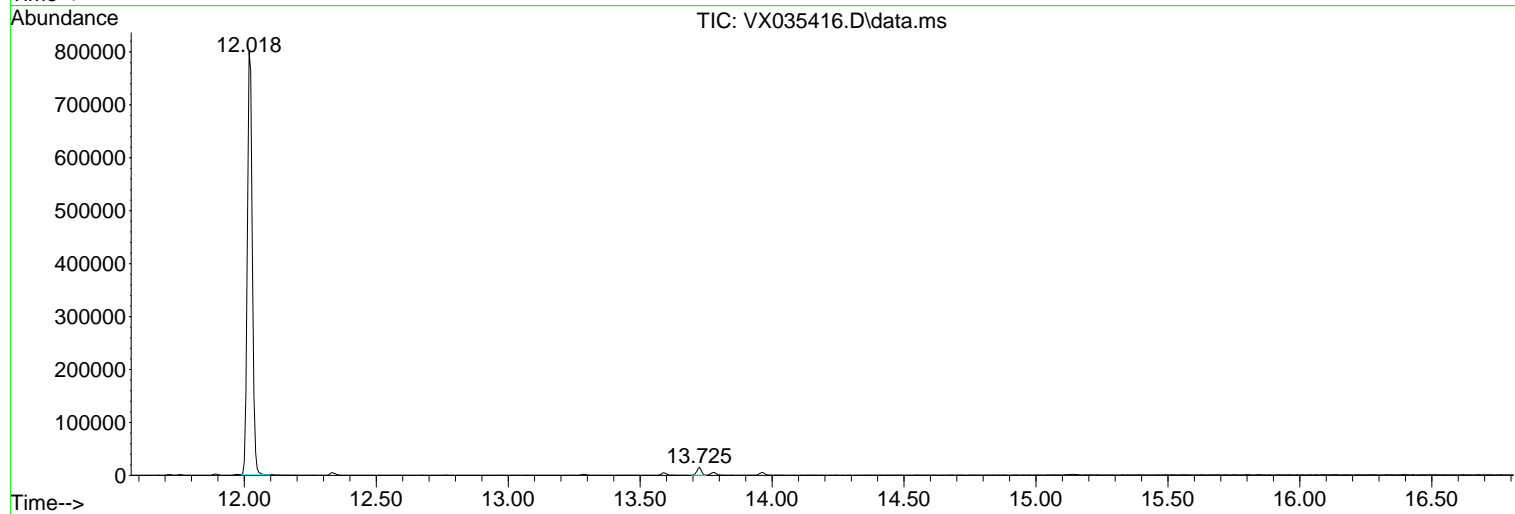
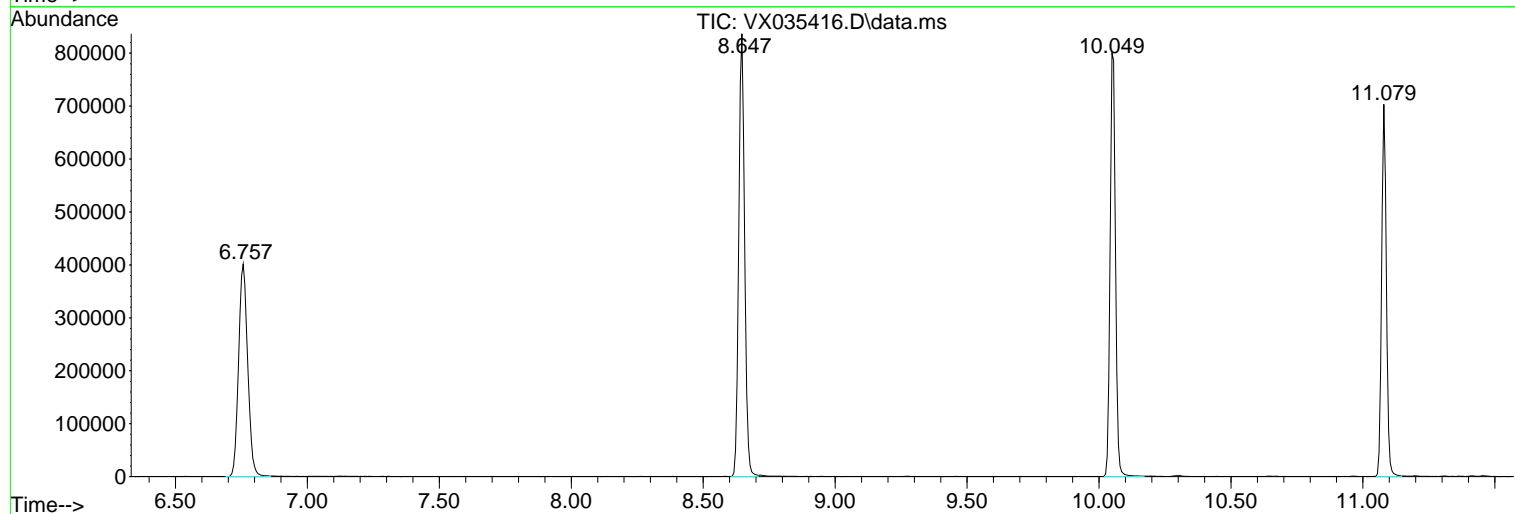
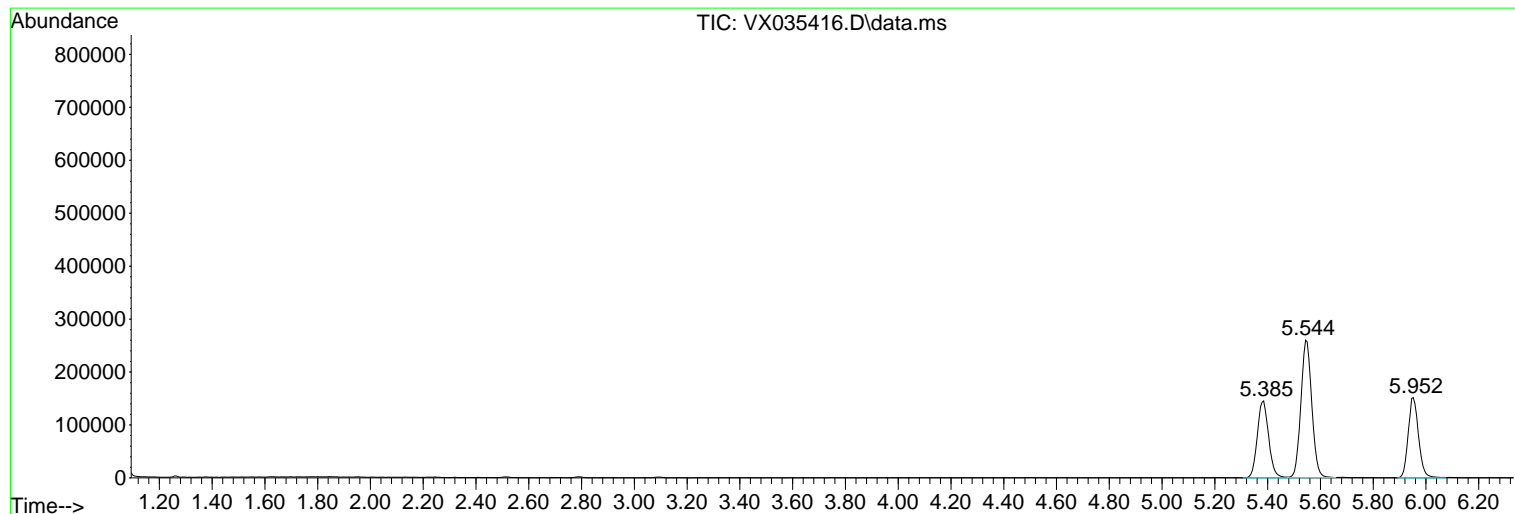
Sum of corrected areas: 6921032

Data Path : Z:\voasrv\HPCHEM1\MSVOA_X\Data\VX042923\
 Data File : VX035416.D
 Acq On : 29 Apr 2023 12:13
 Operator : JC/MD
 Sample : VX0429MBL01
 Misc : 5.00g/10mL/100uL/5.00mL/MSVOA_X/MEOH
 ALS Vial : 3 Sample Multiplier: 1

Instrument :
 MSVOA_X
 ClientSampleId :
 VX0429MBL01

Quant Method : Z:\voasrv\HPCHEM1\MSVOA_X\Method\82X042523W.M
 Quant Title : SW846 8260

TIC Library : C:\Database\NIST20.L
 TIC Integration Parameters: LSCINT.P



Library Search Compound Report

Data Path : Z:\voasrv\HPCHEM1\MSVOA_X\Data\VX042923\
Data File : VX035416.D
Acq On : 29 Apr 2023 12:13
Operator : JC/MD
Sample : VX0429MBL01
Misc : 5.00g/10mL/100uL/5.00mL/MSVOA_X/MEOH
ALS Vial : 3 Sample Multiplier: 1

Instrument :
MSVOA_X
ClientSampleId :
VX0429MBL01

Quant Method : Z:\voasrv\HPCHEM1\MSVOA_X\Method\82X042523W.M
Quant Title : SW846 8260

TIC Library : C:\Database\NIST20.L
TIC Integration Parameters: LSCINT.P

No Library Search Compounds Detected

Data Path : Z:\voasrv\HPCHEM1\MSVOA_X\Data\VX042923\
Data File : VX035416.D
Acq On : 29 Apr 2023 12:13
Operator : JC/MD
Sample : VX0429MBL01
Misc : 5.00g/10mL/100uL/5.00mL/MSVOA_X/MEOH
ALS Vial : 3 Sample Multiplier: 1

Instrument :
MSVOA_X
ClientSampleId :
VX0429MBL01

Quant Method : Z:\voasrv\HPCHEM1\MSVOA_X\Method\82X042523W.M
Quant Title : SW846 8260

TIC Library : C:\Database\NIST20.L
TIC Integration Parameters: LSCINT.P

TIC Top Hit name	RT	EstConc	Units	Response	--Internal Standard--		
					#	RT	Resp Conc
