

Data Path : Z:\VOASRV\HPCHEM1\MSVOA X\DATA\ VX043019\
 Data File : VX009238.D
 Acq On : 30 Apr 2019 12:11
 Operator : JC/SP
 Sample : K2594-14
 Misc : 5.0mL/MSVOA X/WATER
 ALS Vial : 7 Sample Multiplier: 1

Instrument :
 MSVOA_X
 ClientSampleId :
 DUP-0515-190423

Quant Time: May 01 01:20:19 2019
 Quant Method : Z:\VOASRV\HPCHEM1\MSVOA_X\METHOD\82X042919W.M
 Quant Title : SW846 8260
 QLast Update : Tue Apr 30 07:03:50 2019
 Response via : Initial Calibration

Internal Standards	R.T.	QIon	Response	Conc	Units	Dev(Min)
1) Pentafluorobenzene	5.67	168	214860	50.00	ug/l	0.00
34) 1,4-Difluorobenzene	6.86	114	345246	50.00	ug/l	0.00
63) Chlorobenzene-d5	10.11	117	303278	50.00	ug/l	0.00
72) 1,4-Dichlorobenzene-d4	12.08	152	130804	50.00	ug/l	0.00

System Monitoring Compounds	R.T.	QIon	Response	Conc	Units	Dev(Min)
33) 1,2-Dichloroethane-d4	6.06	65	141912	48.38	ug/l	0.00
Spiked Amount				50.000		
Recovery						96.76%
35) Dibromofluoromethane	5.50	113	105695	48.70	ug/l	0.00
Spiked Amount				50.000		
Recovery						97.40%
50) Toluene-d8	8.71	98	435327	49.68	ug/l	0.00
Spiked Amount				50.000		
Recovery						99.36%
62) 4-Bromofluorobenzene	11.13	95	145034	45.55	ug/l	0.00
Spiked Amount				50.000		
Recovery						91.10%

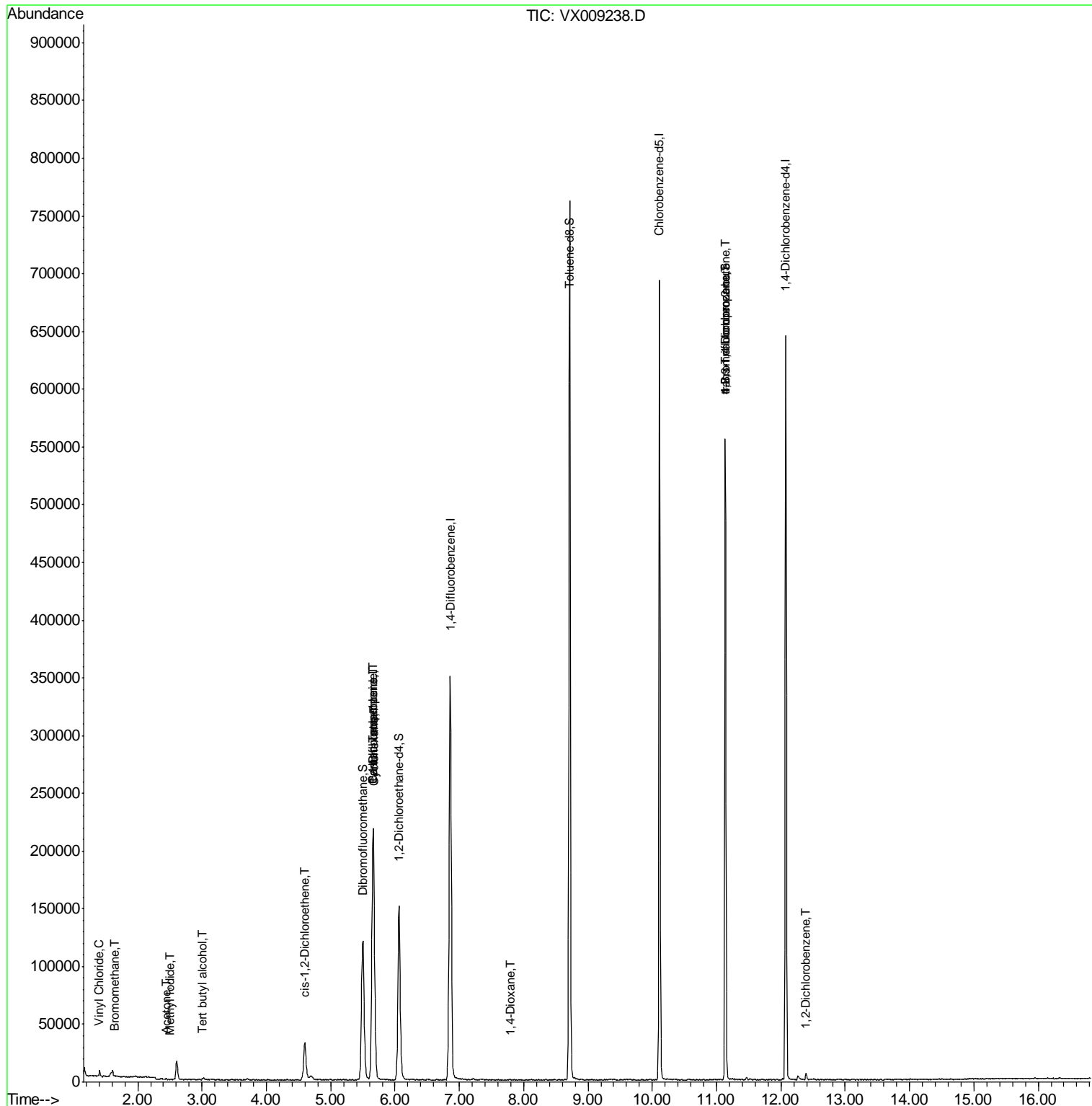
Target Compounds	R.T.	QIon	Response	Conc	Units	Qvalue
4) Vinyl Chloride	1.40	62	3446	1.307	ug/l	95
5) Bromomethane	1.65	94	357	0.226	ug/l #	74
10) Methyl Iodide	2.51	142	234	4.685	ug/l #	89
11) Tert butyl alcohol	3.01	59	418	0.616	ug/l #	87
16) Acetone	2.45	43	1237	0.785	ug/l #	70
27) cis-1,2-Dichloroethene	4.60	96	19614	7.516	ug/l	90
28) Bromochloromethane	5.03	49	19	Below Cal	#	20
31) Cyclohexane	5.67	56	5086	1.173	ug/l #	12
36) 1,1-Dichloropropene	5.66	75	17128	5.338	ug/l #	50
38) Carbon Tetrachloride	5.66	117	19966	6.849	ug/l #	15
49) 1,4-Dioxane	7.79	88	26	0.361	ug/l #	20
76) 1,2,3-Trichloropropane	11.13	75	73137	24.104	ug/l #	34
81) trans-1,4-Dichloro-2-buten	11.13	75	73137	61.674	ug/l #	10
91) 1,2-Dichlorobenzene	12.39	146	1577	0.368	ug/l	82

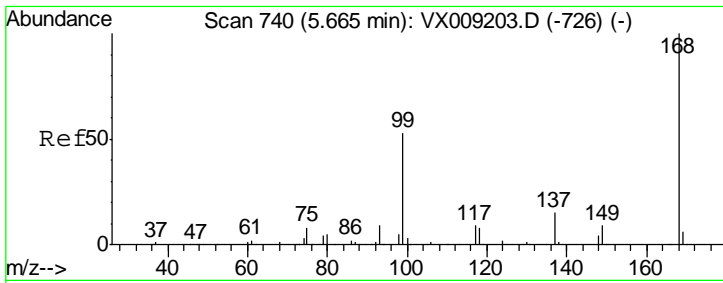
(#) = qualifier out of range (m) = manual integration (+) = signals summed

Data Path : Z:\VOASRV\HPCHEM1\MSVOA X\DATA\VX043019\
 Data File : VX009238.D
 Acq On : 30 Apr 2019 12:11
 Operator : JC/SP
 Sample : K2594-14
 Misc : 5.0mL/MSVOA X/WATER
 ALS Vial : 7 Sample Multiplier: 1

Instrument :
 MSVOA_X
 Client Sampled :
 DUP-0515-190423

Quant Time: May 01 01:20:19 2019
 Quant Method : Z:\VOASRV\HPCHEM1\MSVOA_X\METHOD\82X042919W.M
 Quant Title : SW846 8260
 QLast Update : Tue Apr 30 07:03:50 2019
 Response via : Initial Calibration

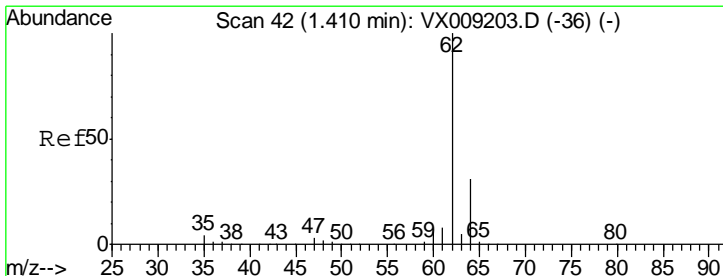
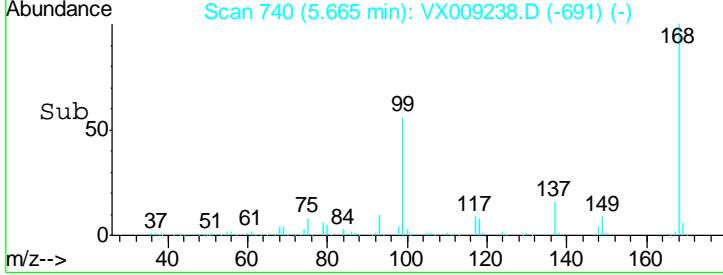
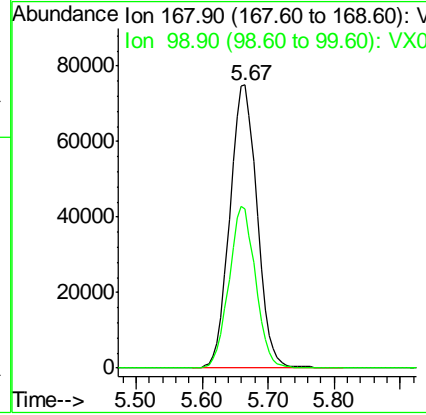
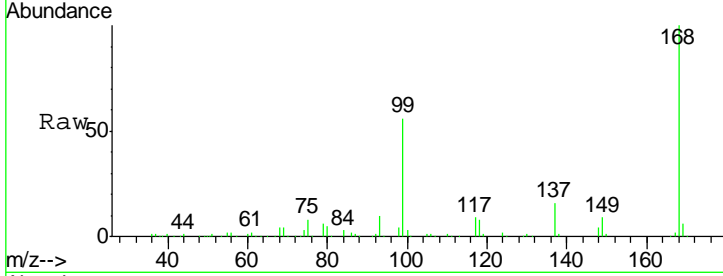




#1
 Pentafluorobenzene
 Concen: 50.000 ug/l
 RT: 5.67 min Scan# 740
 Delta R.T. 0.00 min
 Lab File: VX009238.D
 Acq: 30 Apr 2019 12:11

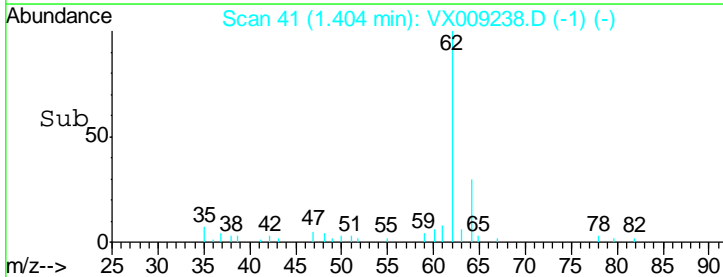
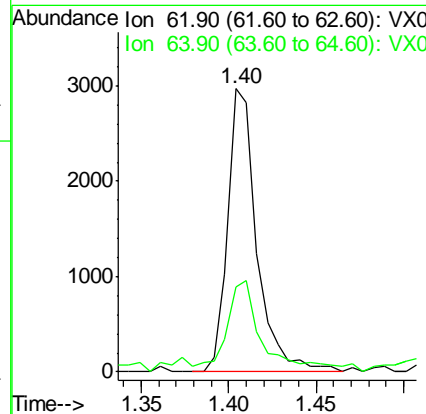
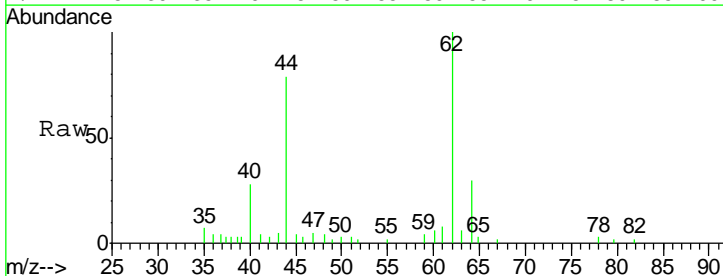
Instrument : MSVOA_X
 ClientSampled : DUP-0515-190423

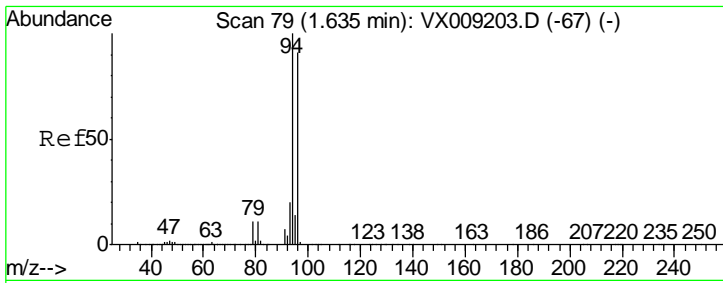
Tgt Ion	Resp	Lower	Upper
168	100		
99	56.1	42.3	63.5



#4
 Vinyl Chloride
 Concen: 1.307 ug/l
 RT: 1.40 min Scan# 41
 Delta R.T. -0.01 min
 Lab File: VX009238.D
 Acq: 30 Apr 2019 12:11

Tgt Ion	Resp	Lower	Upper
62	100		
64	28.1	24.6	36.8

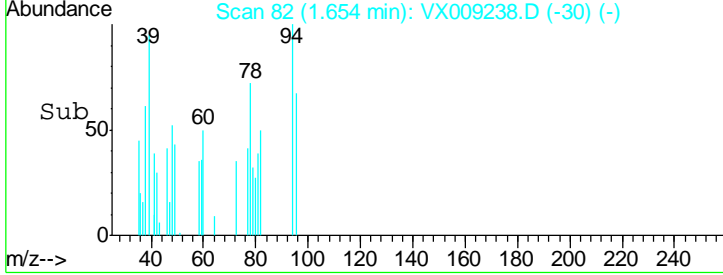
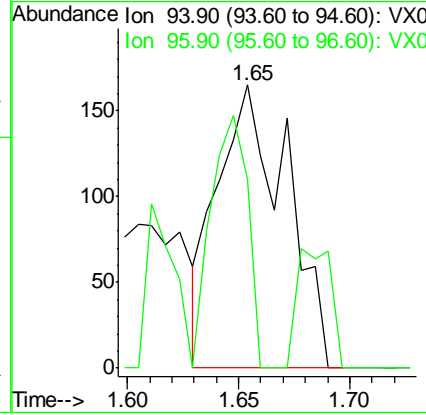
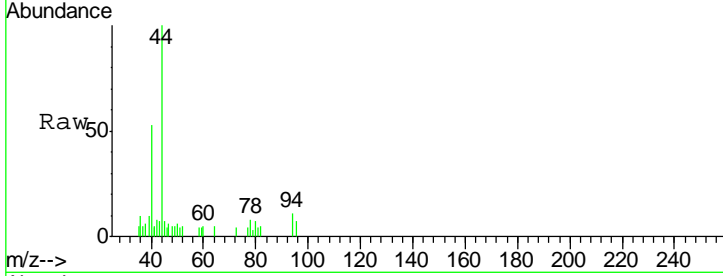




#5
 Bromomethane
 Concen: 0.226 ug/l
 RT: 1.65 min Scan# 82
 Delta R.T. 0.02 min
 Lab File: VX009238.D
 Acq: 30 Apr 2019 12:11

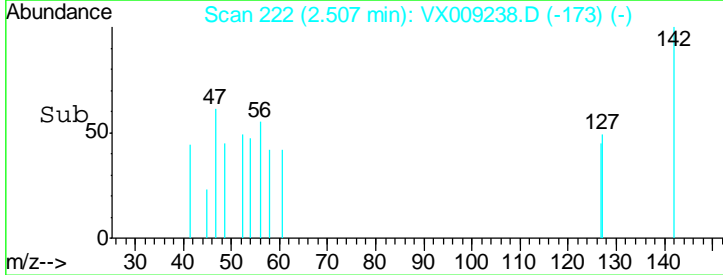
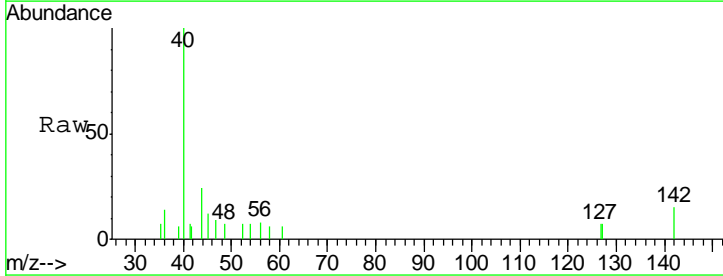
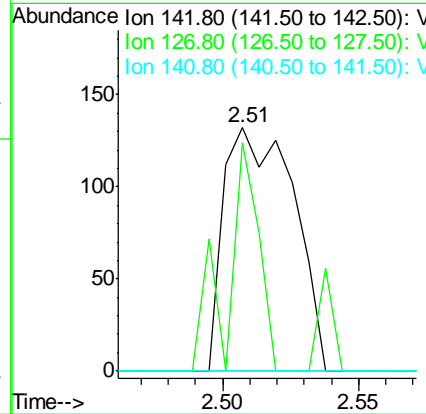
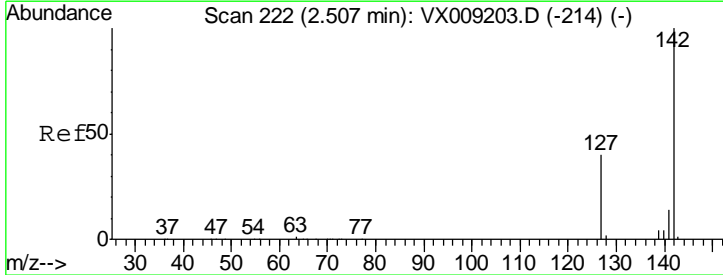
Instrument :
 MSVOA_X
ClientSampled :
 DUP-0515-190423

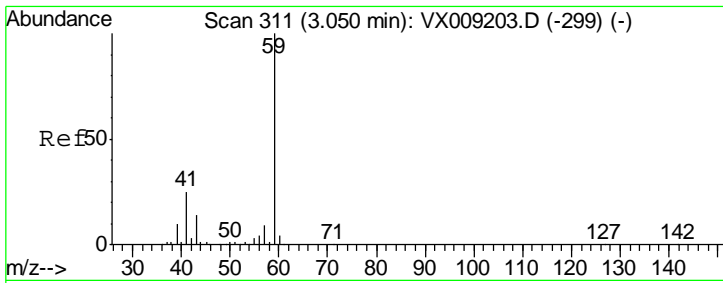
Tgt Ion: 94 Resp: 357
 Ion Ratio Lower Upper
 94 100
 96 66.7 73.0 109.6#



#10
 Methyl Iodide
 Concen: 4.685 ug/l
 RT: 2.51 min Scan# 222
 Delta R.T. 0.00 min
 Lab File: VX009238.D
 Acq: 30 Apr 2019 12:11

Tgt Ion: 142 Resp: 234
 Ion Ratio Lower Upper
 142 100
 127 42.3 32.7 49.1
 141 0.0 11.5 17.3#

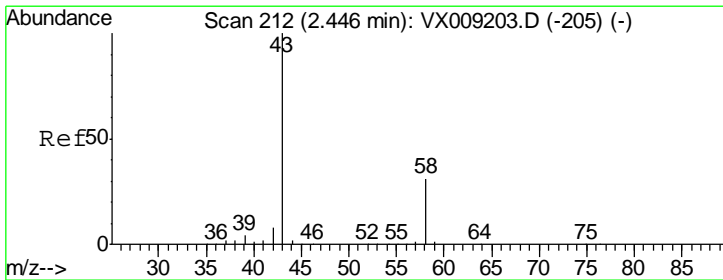
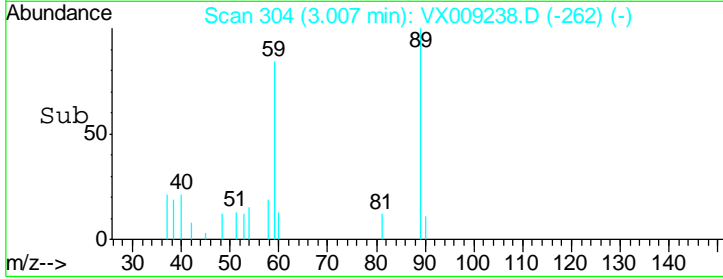
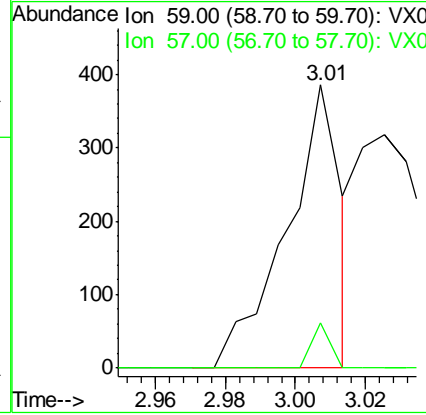
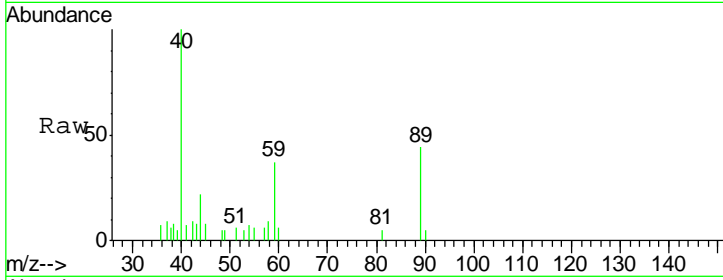




#11
 Tert butyl alcohol
 Concen: 0.616 ug/l
 RT: 3.01 min Scan# 304
 Delta R.T. -0.04 min
 Lab File: VX009238.D
 Acq: 30 Apr 2019 12:11

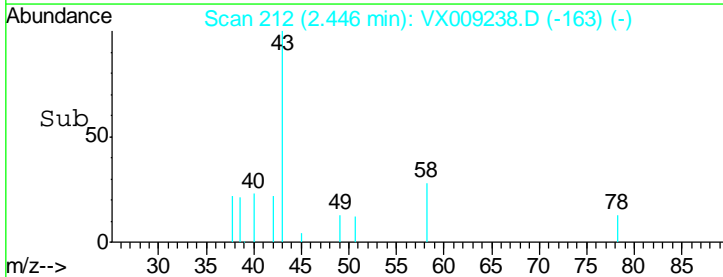
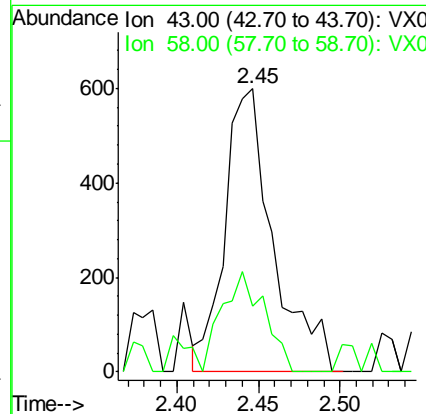
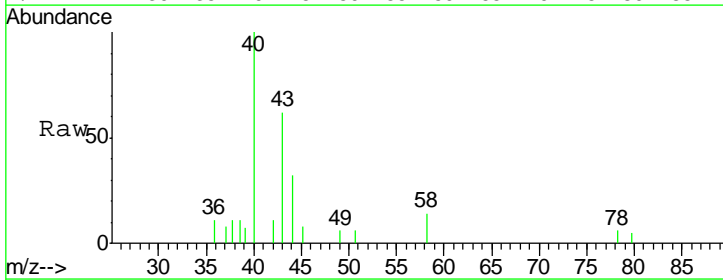
Instrument :
 MSVOA_X
ClientSampled :
 DUP-0515-190423

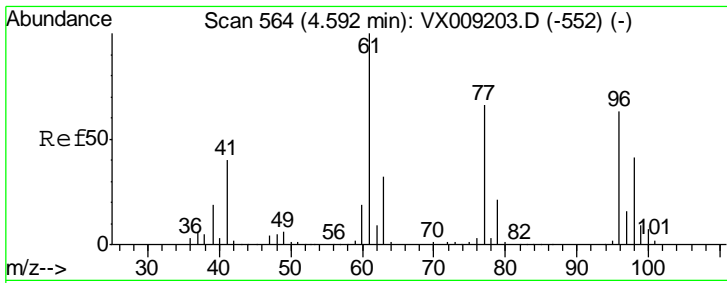
Tgt Ion: 59 Resp: 418
 Ion Ratio Lower Upper
 59 100
 57 5.3 8.2 12.2#



#16
 Acetone
 Concen: 0.785 ug/l
 RT: 2.45 min Scan# 212
 Delta R.T. 0.00 min
 Lab File: VX009238.D
 Acq: 30 Apr 2019 12:11

Tgt Ion: 43 Resp: 1237
 Ion Ratio Lower Upper
 43 100
 58 14.4 24.9 37.3#

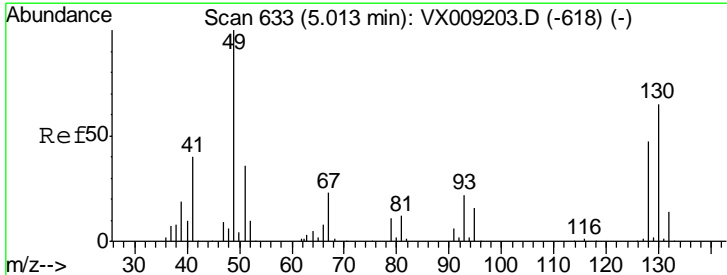
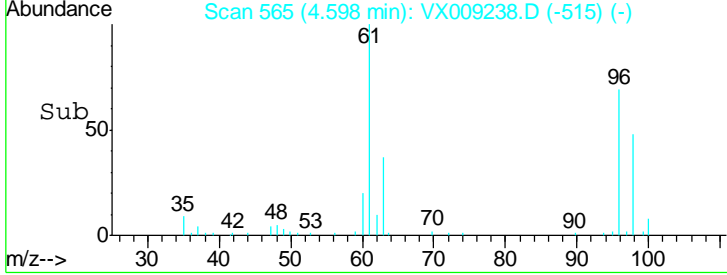
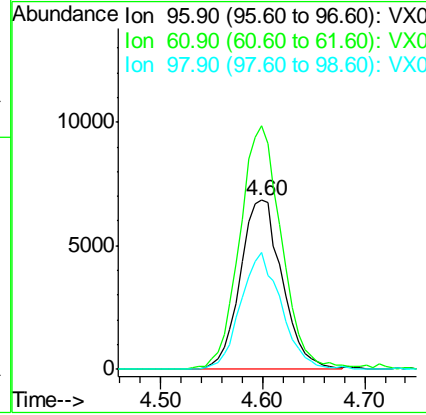
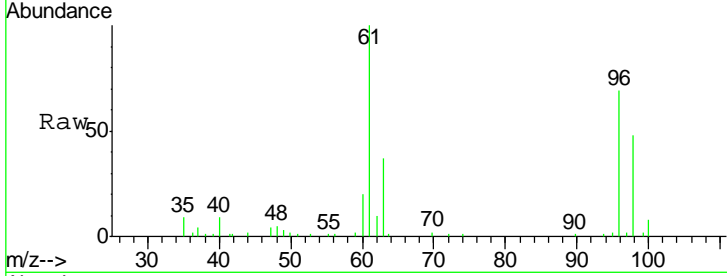




#27
 cis-1,2-Dichloroethene
 Concen: 7.516 ug/l
 RT: 4.60 min Scan# 565
 Delta R.T. 0.01 min
 Lab File: VX009238.D
 Acq: 30 Apr 2019 12:11

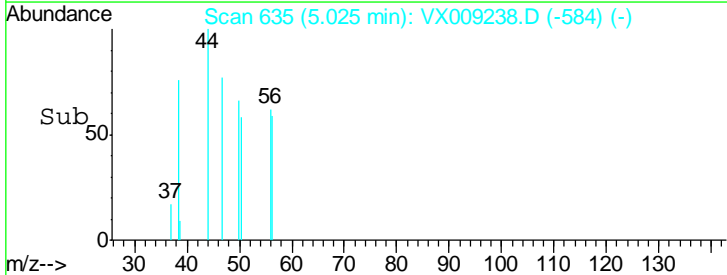
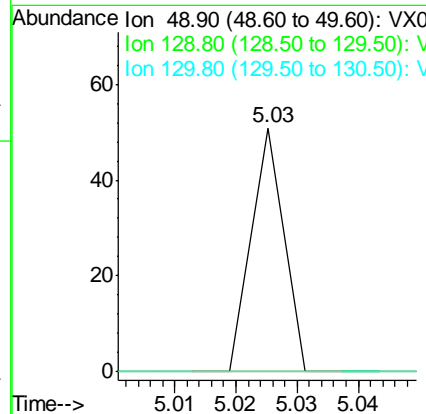
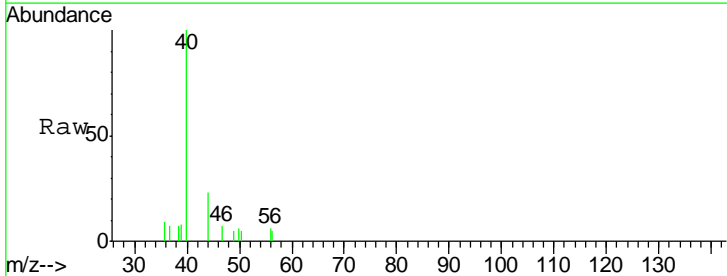
Instrument :
 MSVOA_X
ClientSampled :
 DUP-0515-190423

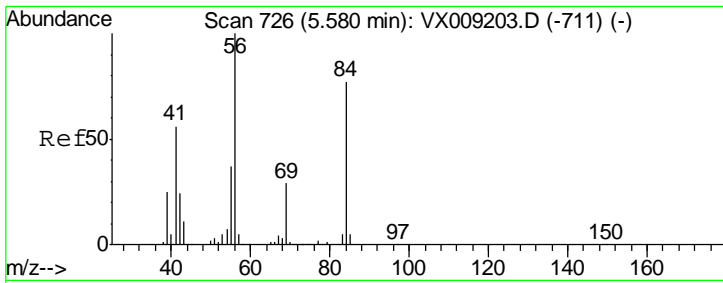
Tgt Ion	Resp	Lower	Upper
96	19614		
96	100		
61	143.4	0.0	324.0
98	66.4	0.0	130.4



#28
 Bromochloromethane
 Concen: Below Cal
 RT: 5.03 min Scan# 635
 Delta R.T. 0.01 min
 Lab File: VX009238.D
 Acq: 30 Apr 2019 12:11

Tgt Ion	Resp	Lower	Upper
49	19		
49	100		
129	0.0	0.0	3.8
130	0.0	51.2	76.8#

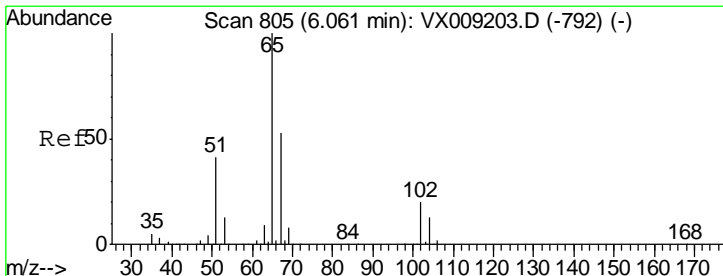
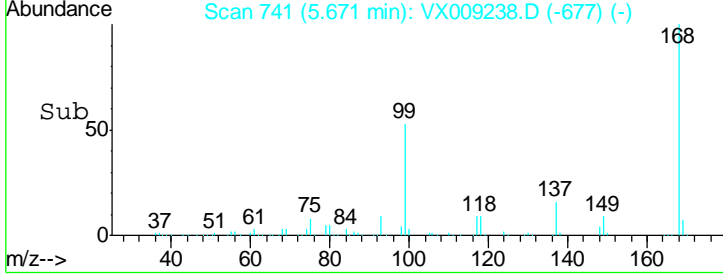
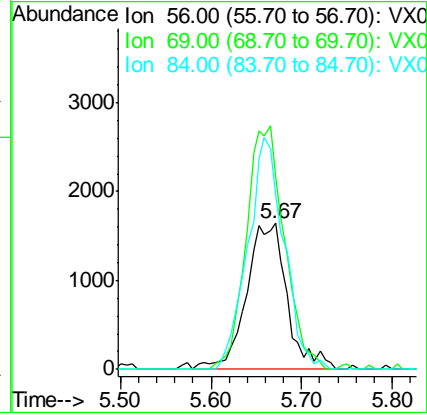
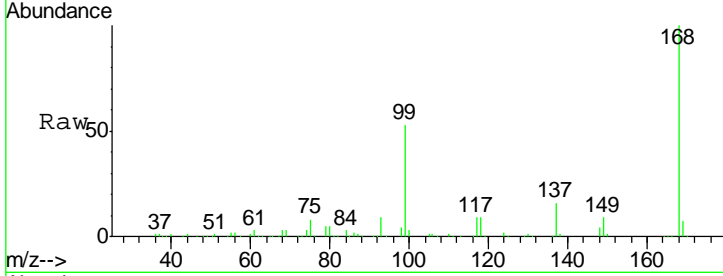




#31
 Cyclohexane
 Concen: 1.173 ug/l
 RT: 5.67 min Scan# 741
 Delta R.T. 0.09 min
 Lab File: VX009238.D
 Acq: 30 Apr 2019 12:11

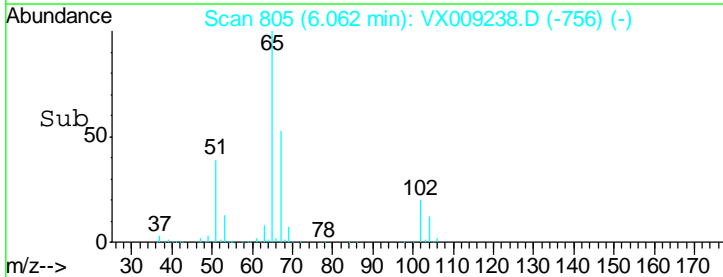
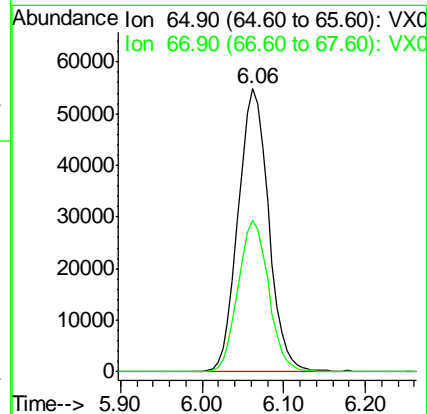
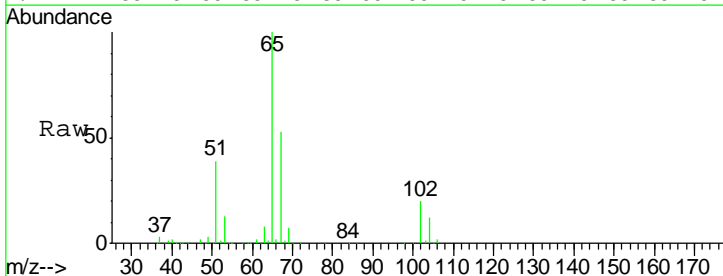
Instrument :
 MSVOA_X
 ClientSampled :
 DUP-0515-190423

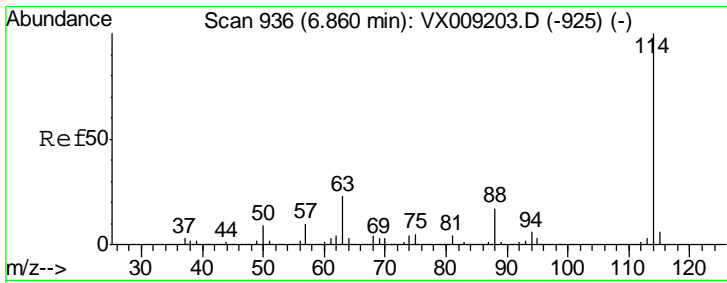
Tgt Ion	Resp	Lower	Upper
56	100		
69	131.8	23.4	35.0#
84	119.5	61.9	92.9#



#33
 1,2-Dichloroethane-d4
 Concen: 48.383 ug/l
 RT: 6.06 min Scan# 805
 Delta R.T. 0.00 min
 Lab File: VX009238.D
 Acq: 30 Apr 2019 12:11

Tgt Ion	Resp	Lower	Upper
65	100		
67	53.6	0.0	106.6

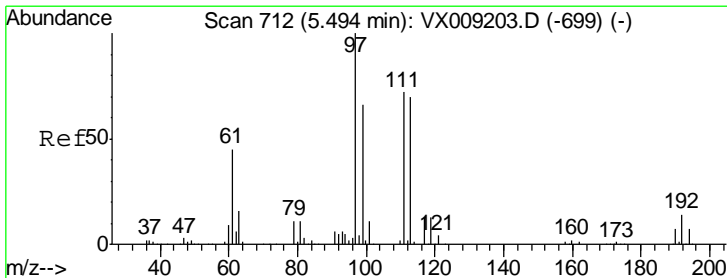
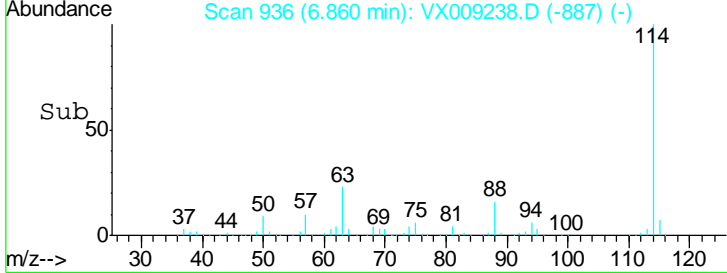
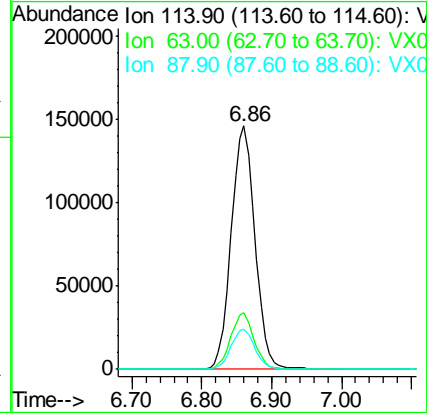
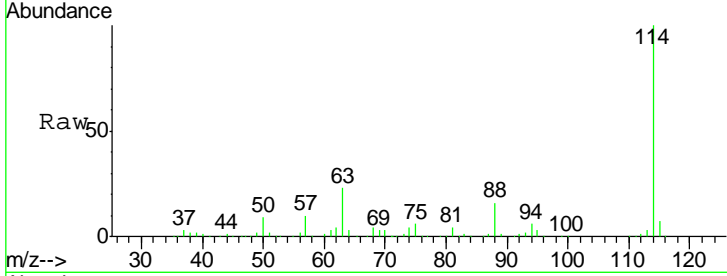




#34
 1,4-Difluorobenzene
 Concen: 50.000 ug/l
 RT: 6.86 min Scan# 936
 Delta R.T. 0.00 min
 Lab File: VX009238.D
 Acq: 30 Apr 2019 12:11

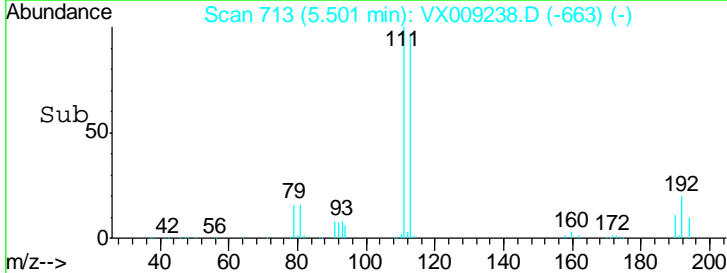
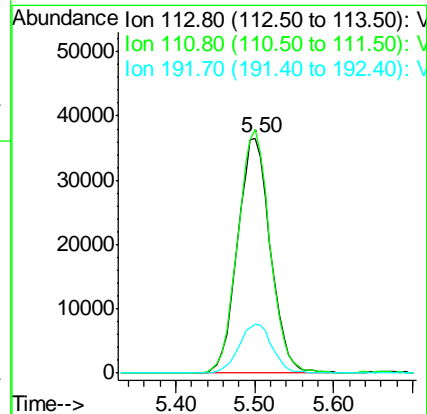
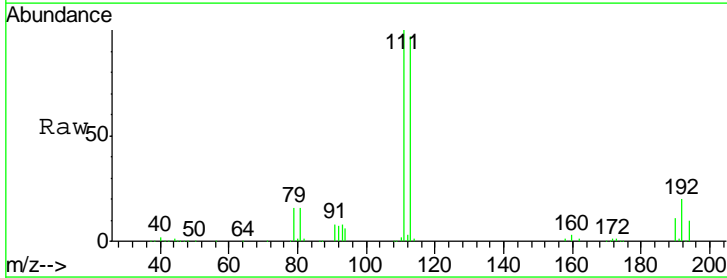
Instrument :
 MSVOA_X
 ClientSampleId :
 DUP-0515-190423

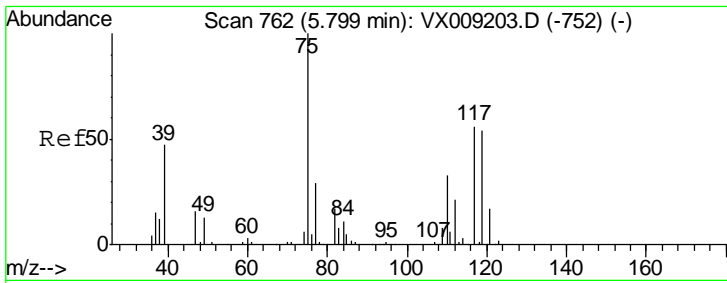
Tgt Ion	Resp	Lower	Upper
114	100		
63	23.1	0.0	45.6
88	16.5	0.0	33.2



#35
 Dibromofluoromethane
 Concen: 48.699 ug/l
 RT: 5.50 min Scan# 713
 Delta R.T. 0.01 min
 Lab File: VX009238.D
 Acq: 30 Apr 2019 12:11

Tgt Ion	Resp	Lower	Upper
113	100		
111	101.6	82.8	124.2
192	21.2	17.0	25.6

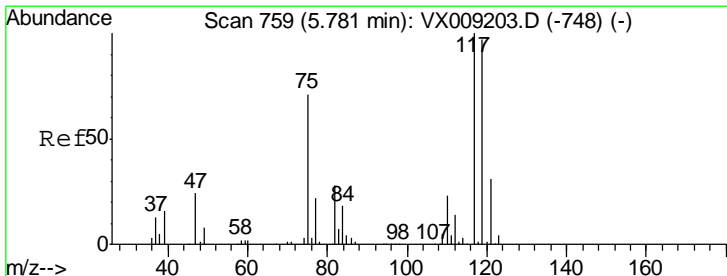
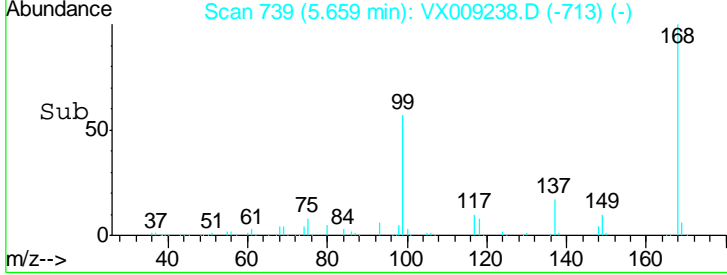
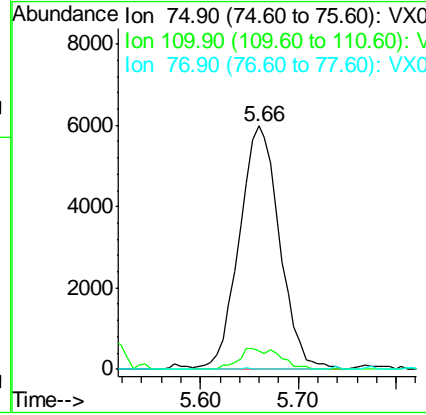
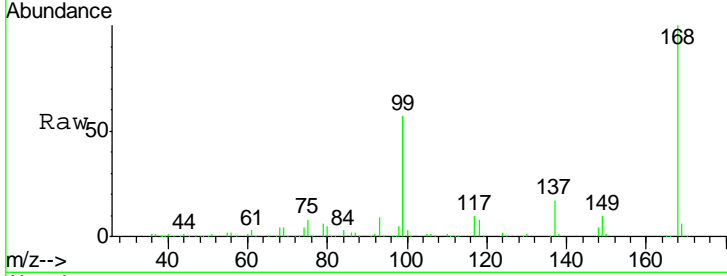




#36
 1,1-Dichloropropene
 Concen: 5.338 ug/l
 RT: 5.66 min Scan# 739
 Delta R.T. -0.14 min
 Lab File: VX009238.D
 Acq: 30 Apr 2019 12:11

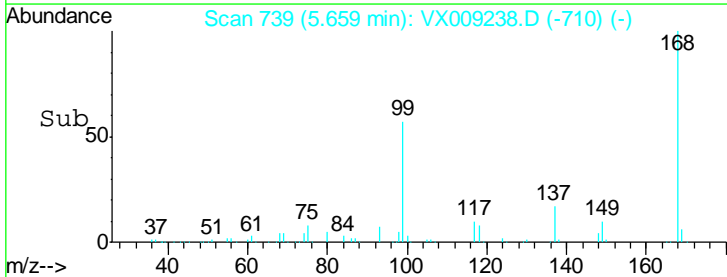
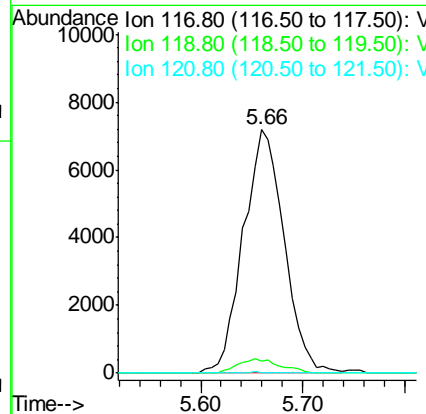
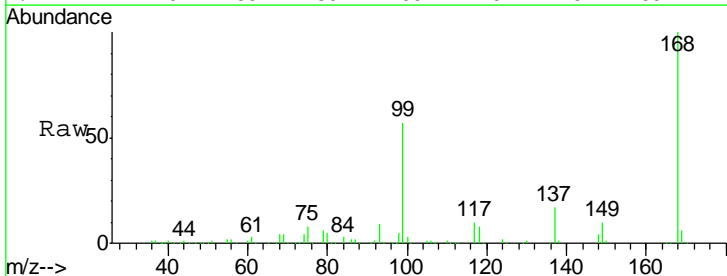
Instrument : MSVOA_X
 ClientSampleId : DUP-0515-190423

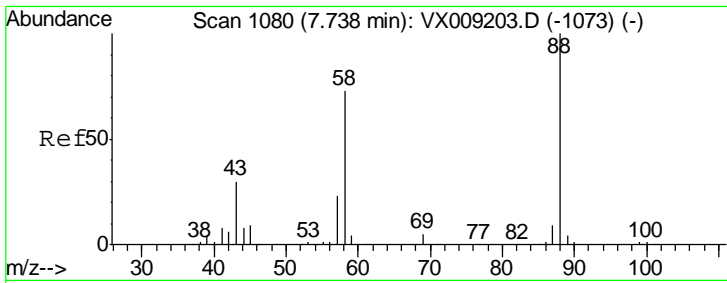
Tgt Ion	Resp	Lower	Upper
75	17128		
110	8.8	16.9	50.6#
77	0.1	24.8	37.2#



#38
 Carbon Tetrachloride
 Concen: 6.849 ug/l
 RT: 5.66 min Scan# 739
 Delta R.T. -0.12 min
 Lab File: VX009238.D
 Acq: 30 Apr 2019 12:11

Tgt Ion	Resp	Lower	Upper
117	19966		
119	4.9	77.5	116.3#
121	0.0	24.7	37.1#

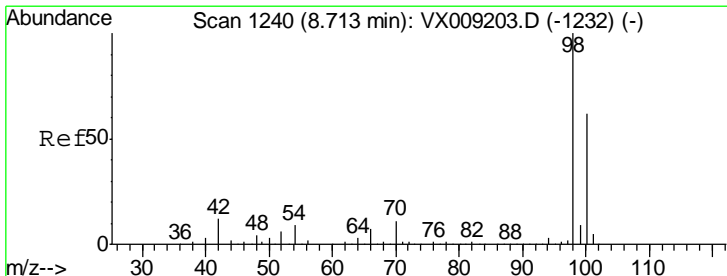
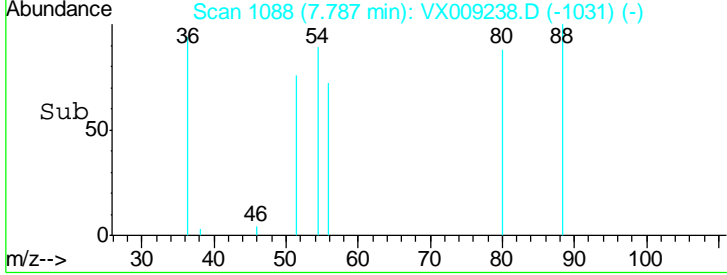
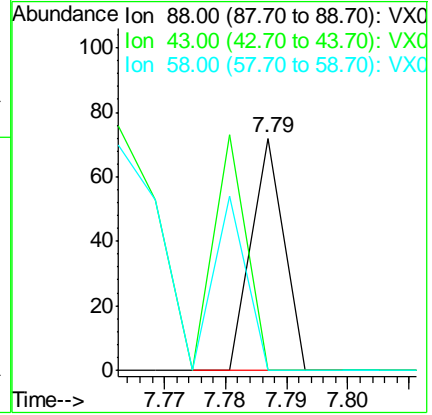
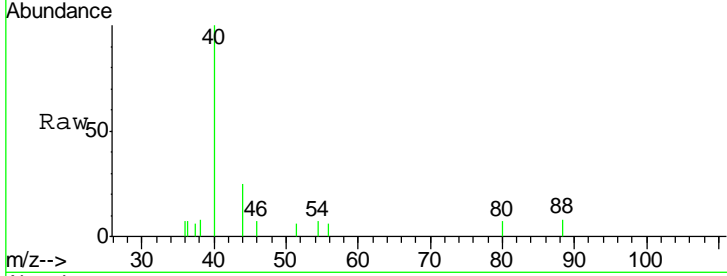




#49
 1,4-Dioxane
 Concen: 0.361 ug/l
 RT: 7.79 min Scan# 1088
 Delta R.T. 0.05 min
 Lab File: VX009238.D
 Acq: 30 Apr 2019 12:11

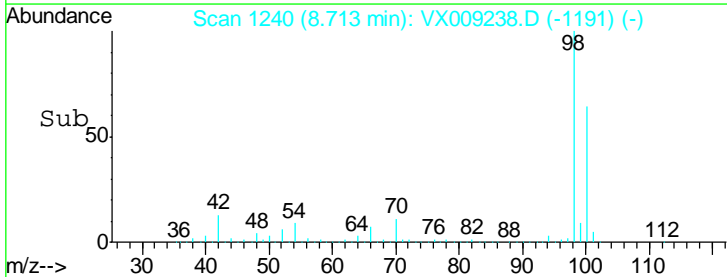
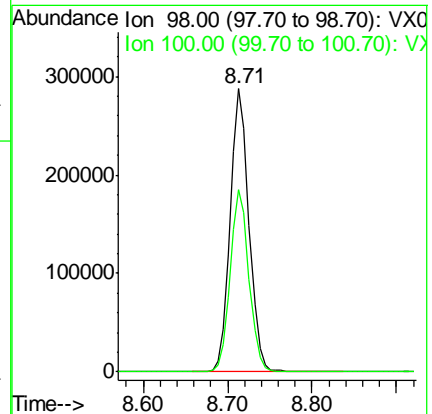
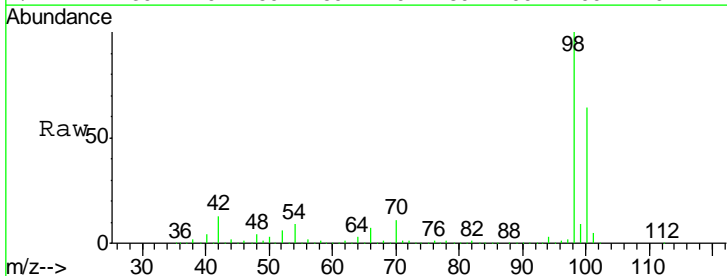
Instrument :
 MSVOA_X
ClientSampled :
 DUP-0515-190423

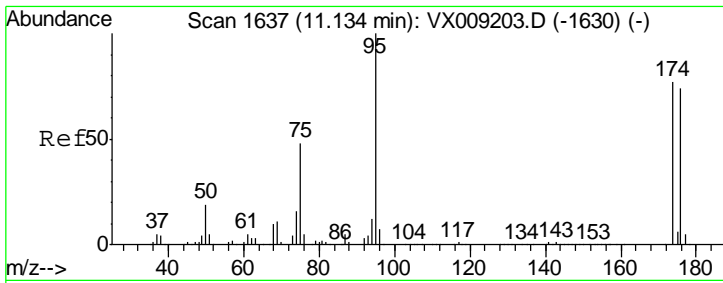
Tgt Ion	Resp	Lower	Upper
88	100		
43	0.0	28.6	42.8#
58	0.0	61.7	92.5#



#50
 Toluene-d8
 Concen: 49.682 ug/l
 RT: 8.71 min Scan# 1240
 Delta R.T. 0.00 min
 Lab File: VX009238.D
 Acq: 30 Apr 2019 12:11

Tgt Ion	Resp	Lower	Upper
98	100		
100	64.2	51.2	76.8

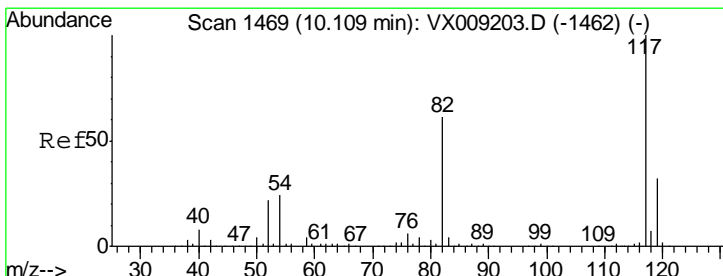
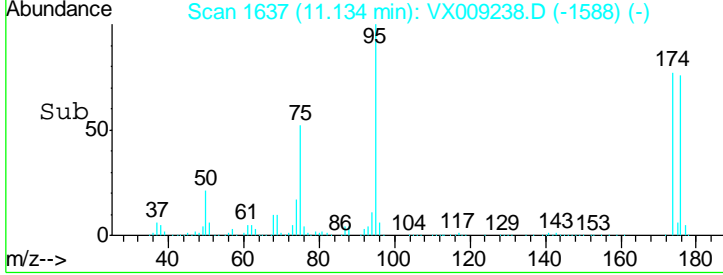
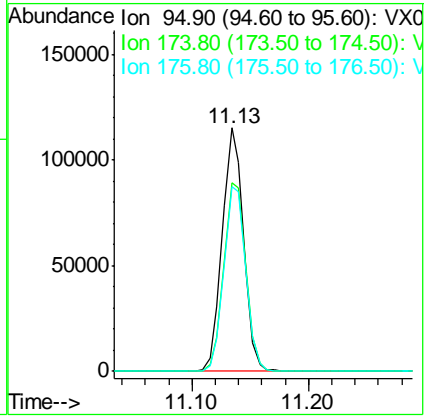
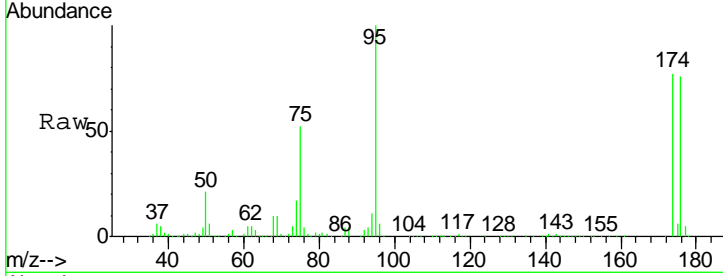




#62
 4-Bromofluorobenzene
 Concen: 45.553 ug/l
 RT: 11.13 min Scan# 1637
 Delta R.T. 0.00 min
 Lab File: VX009238.D
 Acq: 30 Apr 2019 12:11

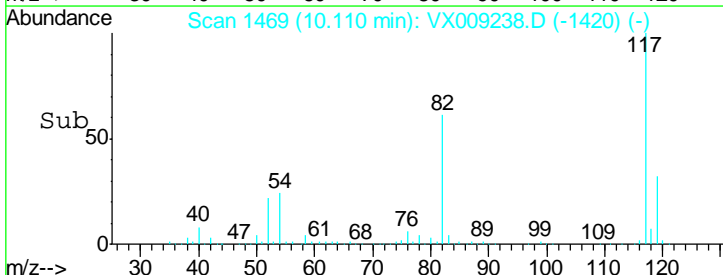
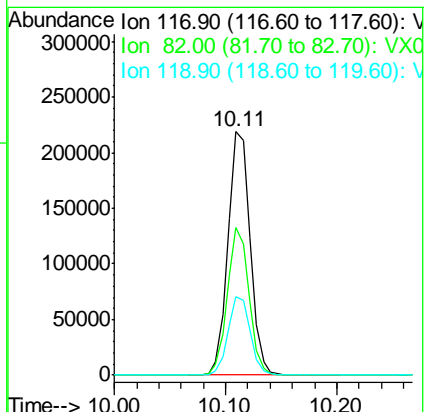
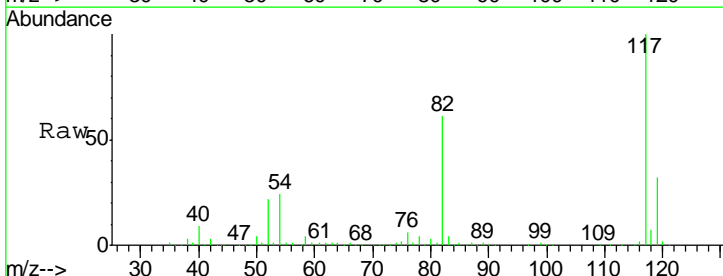
Instrument :
 MSVOA_X
 ClientSampleId :
 DUP-0515-190423

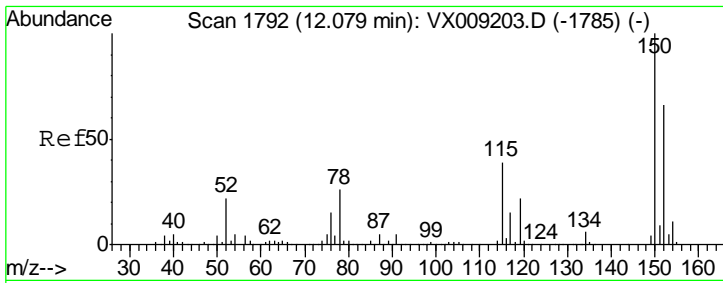
Tgt Ion	Resp	Lower	Upper
95	145034		
174	80.5	0.0	161.6
176	78.3	0.0	159.2



#63
 Chlorobenzene-d5
 Concen: 50.000 ug/l
 RT: 10.11 min Scan# 1469
 Delta R.T. 0.00 min
 Lab File: VX009238.D
 Acq: 30 Apr 2019 12:11

Tgt Ion	Resp	Lower	Upper
117	303278		
82	60.7	48.8	73.2
119	32.4	25.8	38.6

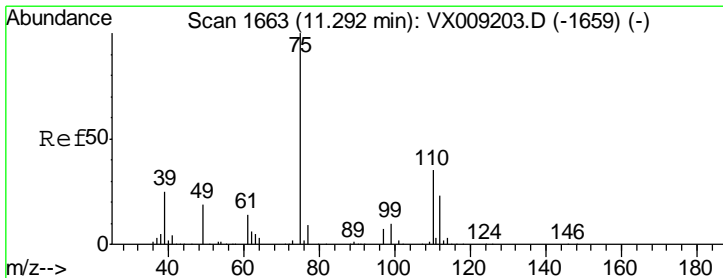
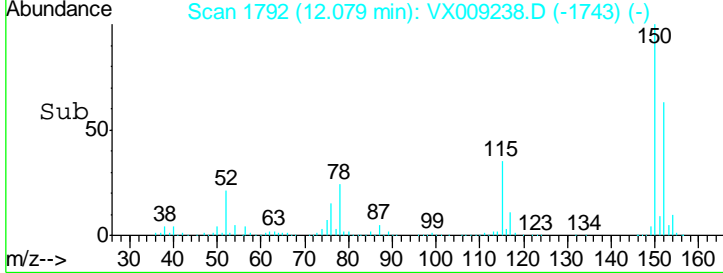
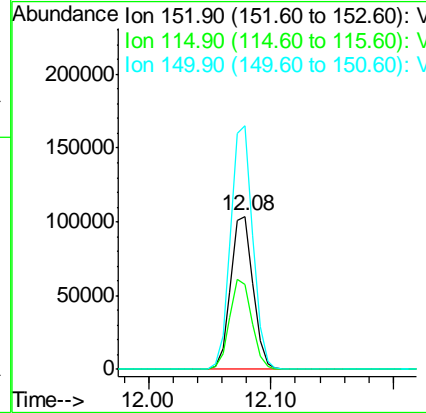
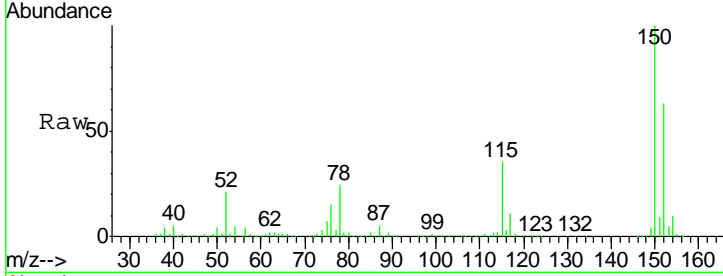




#72
 1,4-Dichlorobenzene-d4
 Concen: 50.000 ug/l
 RT: 12.08 min Scan# 1792
 Delta R.T. 0.00 min
 Lab File: VX009238.D
 Acq: 30 Apr 2019 12:11

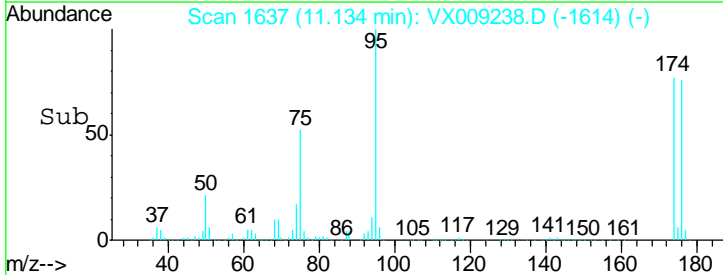
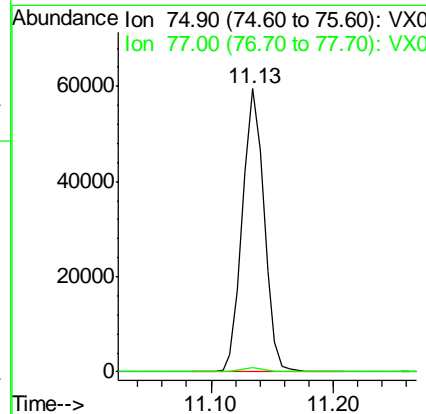
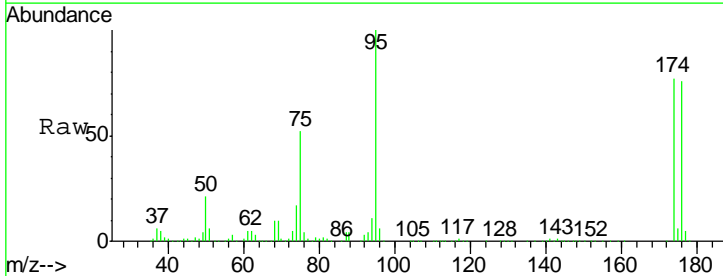
Instrument : MSVOA_X
 ClientSampled : DUP-0515-190423

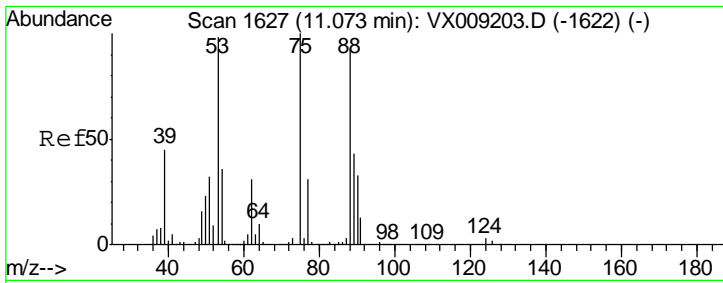
Tgt Ion	Resp	Lower	Upper
152	100		
115	58.4	41.2	123.6
150	158.4	0.0	346.4



#76
 1,2,3-Trichloropropane
 Concen: 24.104 ug/l
 RT: 11.13 min Scan# 1637
 Delta R.T. -0.16 min
 Lab File: VX009238.D
 Acq: 30 Apr 2019 12:11

Tgt Ion	Resp	Lower	Upper
75	100		
77	1.5	22.1	66.1#

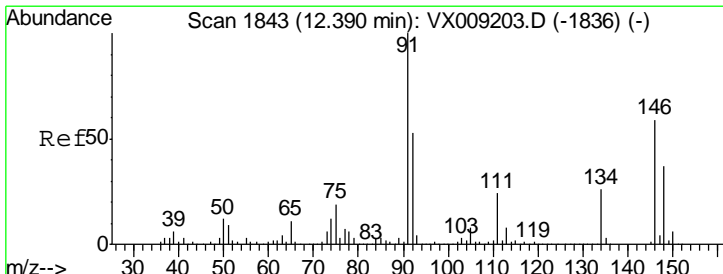
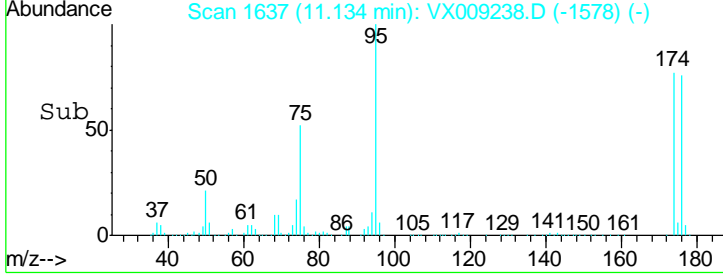
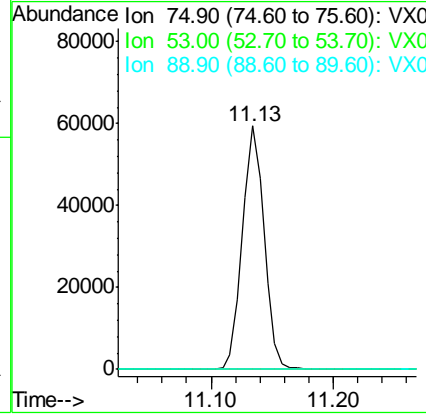
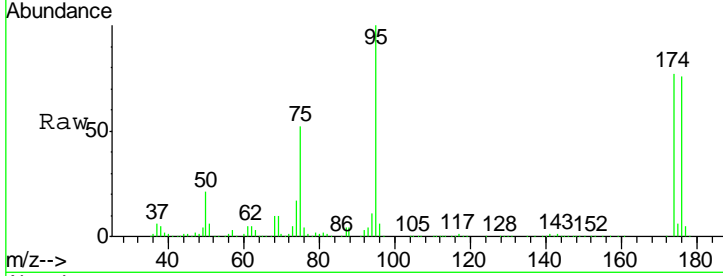




#81
 trans-1,4-Dichloro-2-butene
 Concen: 61.674 ug/l
 RT: 11.13 min Scan# 1637
 Delta R.T. 0.06 min
 Lab File: VX009238.D
 Acq: 30 Apr 2019 12:11

Instrument : MSVOA_X
 ClientSampled : DUP-0515-190423

Tgt Ion	Resp	Lower	Upper
75	100		
53	0.1	79.0	118.6#
89	0.0	34.7	52.1#



#91
 1,2-Dichlorobenzene
 Concen: 0.368 ug/l
 RT: 12.39 min Scan# 1843
 Delta R.T. 0.00 min
 Lab File: VX009238.D
 Acq: 30 Apr 2019 12:11

Tgt Ion	Resp	Lower	Upper
146	100		
111	57.0	20.8	62.4
148	75.1	31.9	95.9

