

Data Path : Z:\voasrv\HPCHEM1\MSVOA_X\Data\VX043024\
 Data File : VX041298.D
 Acq On : 30 Apr 2024 14:45
 Operator : JC/MD
 Sample : P2276-01DL 5X
 Misc : 5.0mL/MSVOA_X/WATER
 ALS Vial : 14 Sample Multiplier: 1

Instrument :
 MSVOA_X
 ClientSampleId :

Quant Time: May 01 02:45:55 2024
 Quant Method : Z:\voasrv\HPCHEM1\MSVOA_X\Method\82X043024W.M
 Quant Title : SW846 8260
 QLast Update : Wed May 01 02:38:17 2024
 Response via : Initial Calibration

Compound	R.T.	QIon	Response	Conc	Units	Dev(Min)

Internal Standards						
1) Pentafluorobenzene	5.550	168	185372	50.000	ug/l	# 0.00
34) 1,4-Difluorobenzene	6.757	114	270197	50.000	ug/l	0.00
63) Chlorobenzene-d5	10.055	117	238464	50.000	ug/l	0.00
72) 1,4-Dichlorobenzene-d4	12.024	152	98573	50.000	ug/l	0.00
System Monitoring Compounds						
33) 1,2-Dichloroethane-d4	5.958	65	97296	48.213	ug/l	0.00
Spiked Amount	50.000	Range 78 - 117	Recovery	=	96.420%	
35) Dibromofluoromethane	5.385	113	82827	45.235	ug/l	0.00
Spiked Amount	50.000	Range 75 - 124	Recovery	=	90.460%	
50) Toluene-d8	8.647	98	306309	52.854	ug/l	0.00
Spiked Amount	50.000	Range 92 - 112	Recovery	=	105.700%	
62) 4-Bromofluorobenzene	11.079	95	110443	49.229	ug/l	0.00
Spiked Amount	50.000	Range 83 - 123	Recovery	=	98.460%	
Target Compounds						
						Qvalue
3) Chloromethane	1.294	50	371	0.235	ug/l	# 87
5) Bromomethane	1.599	94	646	0.686	ug/l	# 76
8) Diethyl Ether	2.130	74	200	0.219	ug/l	# 46
9) 1,1,2-Trichlorotrifluo...	2.319	101	2397	1.646	ug/l	88
10) Methyl Iodide	2.441	142	576	0.368	ug/l	# 74
11) Tert butyl alcohol	2.940	59	5099	12.624	ug/l	# 78
12) 1,1-Dichloroethene	2.306	96	614	0.427	ug/l	# 65
13) Acrolein	2.233	56	169	0.527	ug/l	# 38
15) Acrylonitrile	3.087	53	328	0.356	ug/l	# 77
16) Acetone	2.392	43	3261	Below Cal		100
17) Carbon Disulfide	2.501	76	1377	0.408	ug/l	96
18) Methyl Acetate	2.715	43	497	0.241	ug/l	# 53
20) Methylene Chloride	2.782	84	1063	0.607	ug/l	# 89
21) trans-1,2-Dichloroethene	3.087	96	537	0.335	ug/l	84
24) 1,1-Dichloroethane	3.611	63	5234	1.811	ug/l	95
25) 2-Butanone	4.617	43	272	0.208	ug/l	# 51
27) cis-1,2-Dichloroethene	4.489	96	53153	27.964	ug/l	80
29) Tetrahydrofuran	5.044	42	286	0.335	ug/l	# 34
31) Cyclohexane	5.544	56	3115	1.279	ug/l	# 1
36) 1,1-Dichloropropene	5.550	75	11274	5.149	ug/l	# 52
38) Carbon Tetrachloride	5.544	117	15598	6.219	ug/l	# 15
40) Benzene	6.037	78	1660	0.246	ug/l	# 62
42) 1,2-Dichloroethane	6.117	62	612	0.247	ug/l	# 77
44) Trichloroethene	7.123	130	17982	10.089	ug/l	86
59) 2-Hexanone	9.488	43	398	0.202	ug/l	# 35
68) m/p-Xylenes	10.311	106	736	0.230	ug/l	97
76) 1,2,3-Trichloropropane	11.079	75	54502	33.927	ug/l	# 38
81) trans-1,4-Dichloro-2-b...	11.079	75	54502	92.414	ug/l	# 5
87) 1,3-Dichlorobenzene	11.969	146	699	0.226	ug/l	82
88) 1,4-Dichlorobenzene	11.969	146	699	0.220	ug/l	82
93) 1,2,4-Trichlorobenzene	13.597	180	946	0.415	ug/l	87
95) Naphthalene	13.786	128	2850	0.422	ug/l	97
96) 1,2,3-Trichlorobenzene	13.963	180	897	0.385	ug/l	95

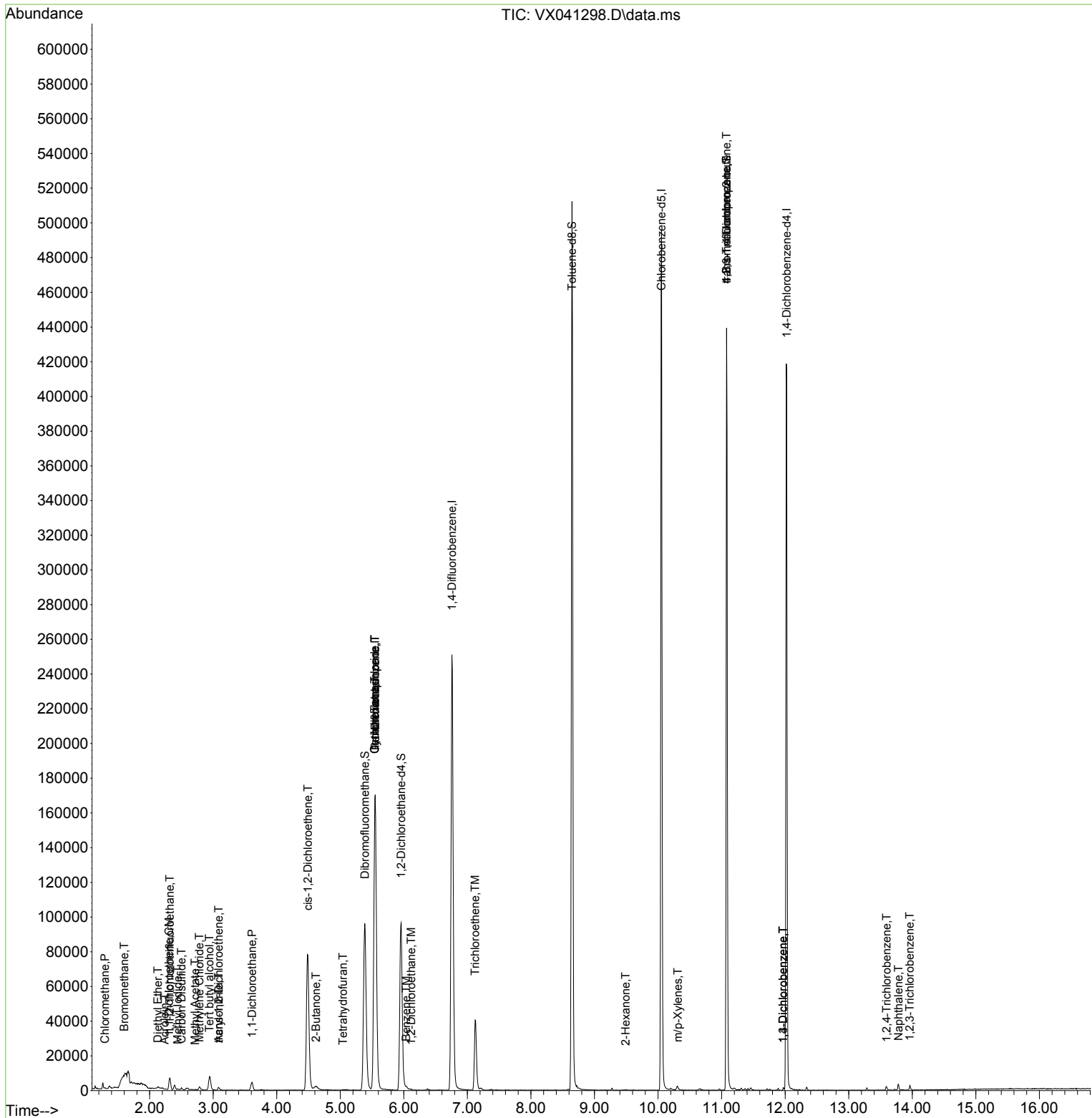
(#) = qualifier out of range (m) = manual integration (+) = signals summed

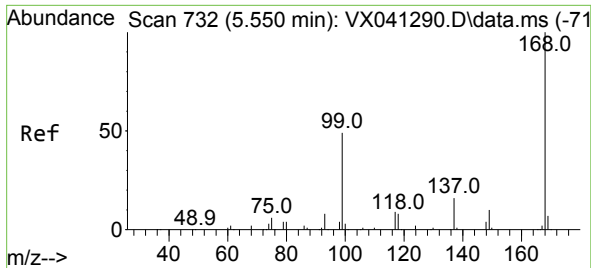
Instrument :
MSVOA_X
ClientSampleId :

Data Path : Z:\voasrv\HPCHEM1\MSVOA_X\Data\VX043024\
 Data File : VX041298.D
 Acq On : 30 Apr 2024 14:45
 Operator : JC/MD
 Sample : P2276-01DL 5X
 Misc : 5.0mL/MSVOA_X/WATER
 ALS Vial : 14 Sample Multiplier: 1

Instrument :
 MSVOA_X
 ClientSampleId :

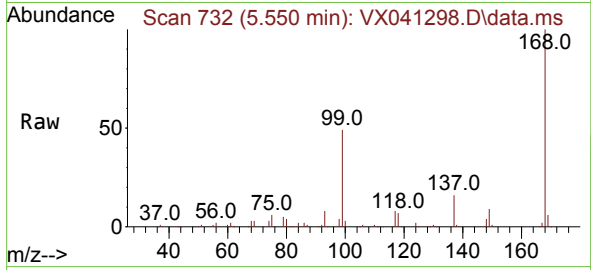
Quant Time: May 01 02:45:55 2024
 Quant Method : Z:\voasrv\HPCHEM1\MSVOA_X\Method\82X043024W.M
 Quant Title : SW846 8260
 QLast Update : Wed May 01 02:38:17 2024
 Response via : Initial Calibration



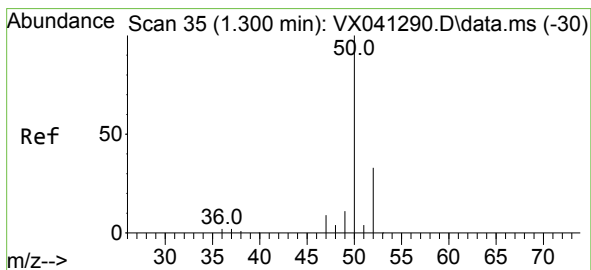
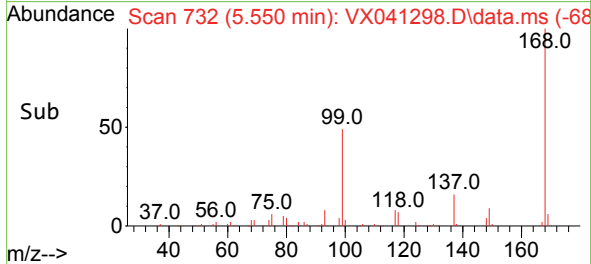
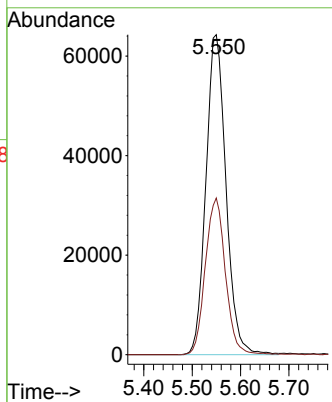


#1
 Pentafluorobenzene
 Concen: 50.000 ug/l
 RT: 5.550 min Scan# 71
 Delta R.T. -0.000 min
 Lab File: VX041298.D
 Acq: 30 Apr 2024 14:45

Instrument :
 MSVOA_X
 ClientSampleId :

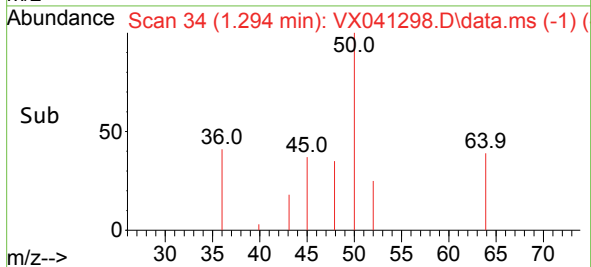
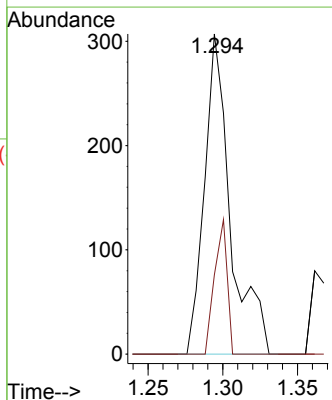
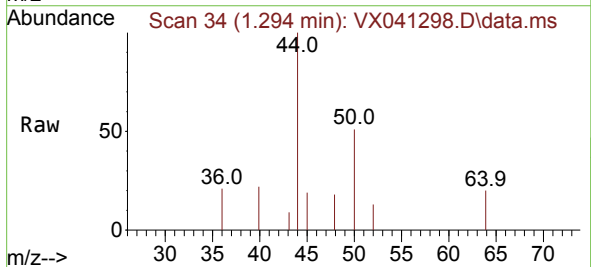


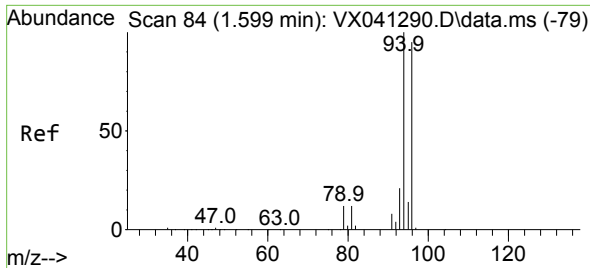
Tgt Ion:168 Resp: 185372
 Ion Ratio Lower Upper
 168 100
 99 49.0 56.6 85.0#



#3
 Chloromethane
 Concen: 0.235 ug/l
 RT: 1.294 min Scan# 34
 Delta R.T. -0.006 min
 Lab File: VX041298.D
 Acq: 30 Apr 2024 14:45

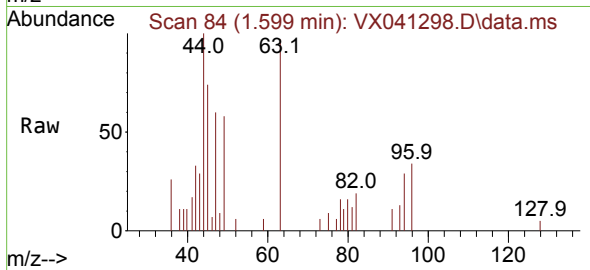
Tgt Ion: 50 Resp: 371
 Ion Ratio Lower Upper
 50 100
 52 24.8 25.5 38.3#



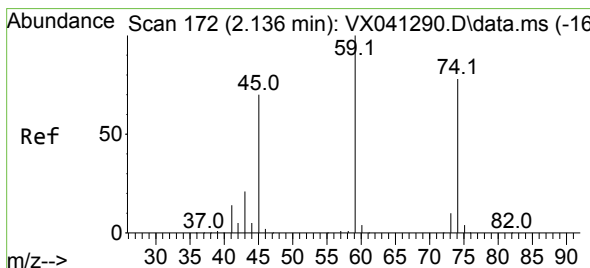
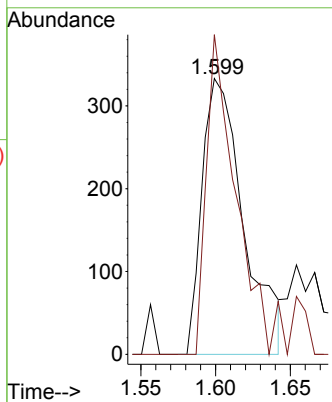
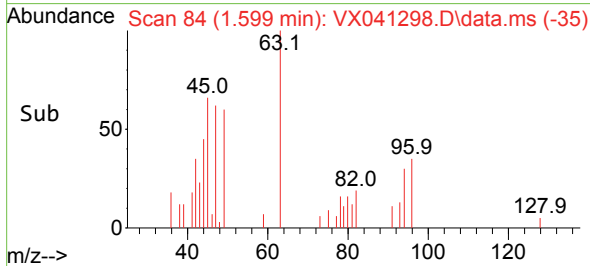


#5
 Bromomethane
 Concen: 0.686 ug/l
 RT: 1.599 min Scan# 84
 Delta R.T. 0.000 min
 Lab File: VX041298.D
 Acq: 30 Apr 2024 14:45

Instrument :
 MSVOA_X
 ClientSampleId :

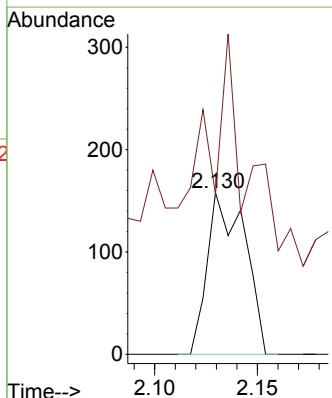
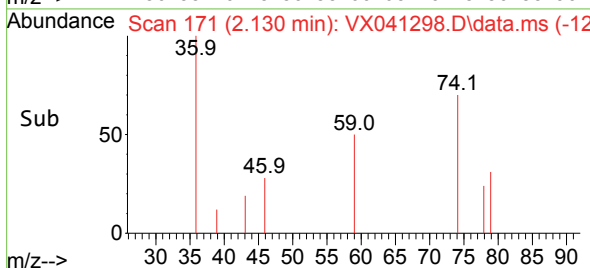
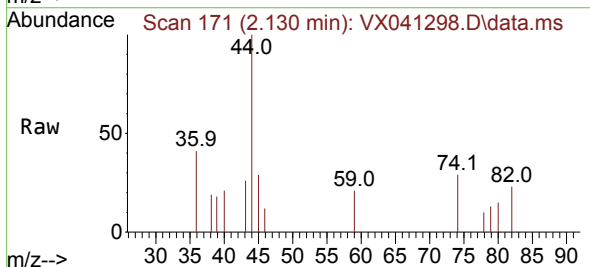


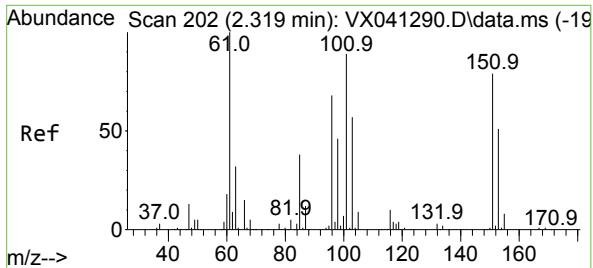
Tgt Ion: 94 Resp: 646
 Ion Ratio Lower Upper
 94 100
 96 115.9 74.6 111.8#



#8
 Diethyl Ether
 Concen: 0.219 ug/l
 RT: 2.130 min Scan# 171
 Delta R.T. -0.006 min
 Lab File: VX041298.D
 Acq: 30 Apr 2024 14:45

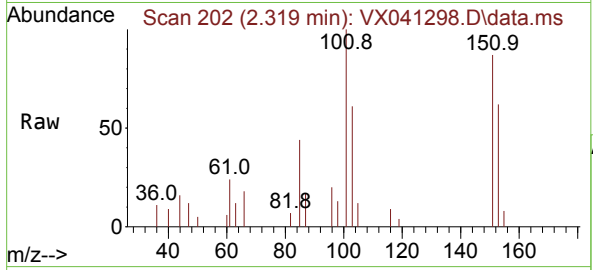
Tgt Ion: 74 Resp: 200
 Ion Ratio Lower Upper
 74 100
 45 162.0 53.3 159.8#





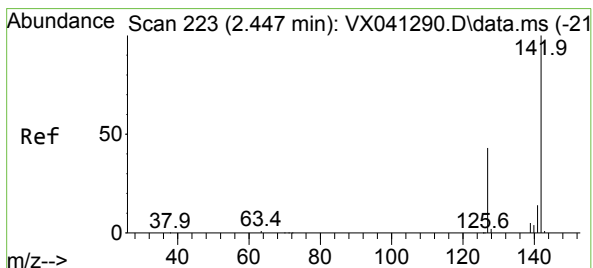
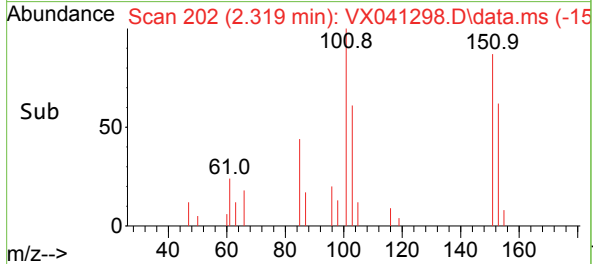
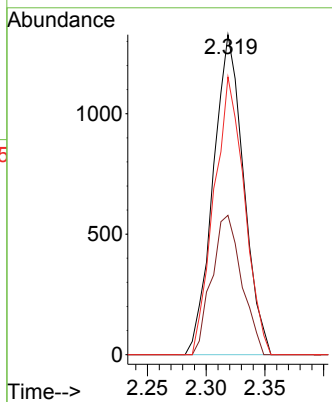
#9
 1,1,2-Trichlorotrifluoroethane
 Concen: 1.646 ug/l
 RT: 2.319 min Scan# 202
 Delta R.T. -0.000 min
 Lab File: VX041298.D
 Acq: 30 Apr 2024 14:45

Instrument : MSVOA_X
 ClientSampleId :



Tgt Ion:101 Resp: 2397

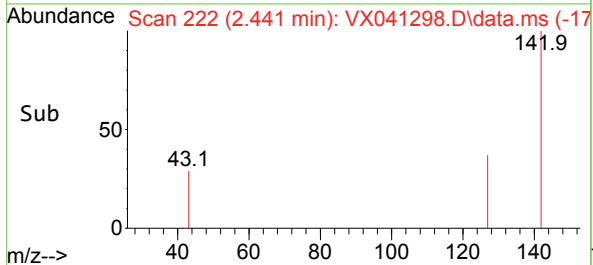
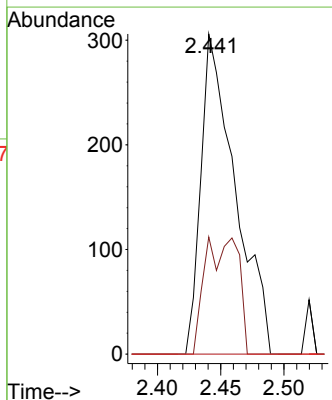
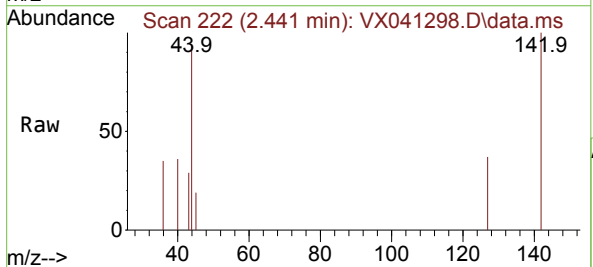
Ion	Ratio	Lower	Upper
101	100		
85	42.8	37.0	55.6
151	86.6	58.6	87.8

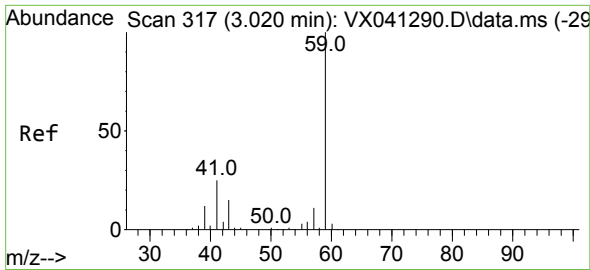


#10
 Methyl Iodide
 Concen: 0.368 ug/l
 RT: 2.441 min Scan# 222
 Delta R.T. -0.006 min
 Lab File: VX041298.D
 Acq: 30 Apr 2024 14:45

Tgt Ion:142 Resp: 576

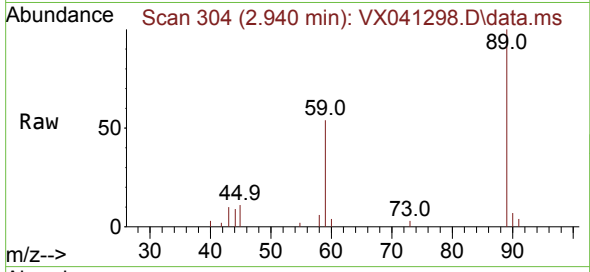
Ion	Ratio	Lower	Upper
142	100		
127	35.6	41.6	62.4#
141	0.0	11.6	17.4#



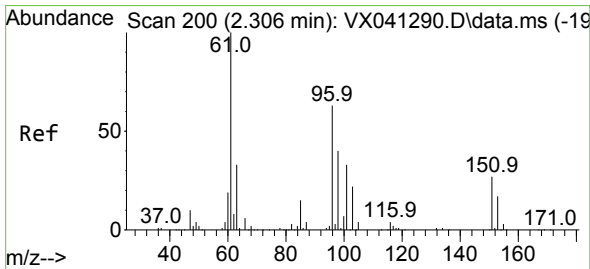
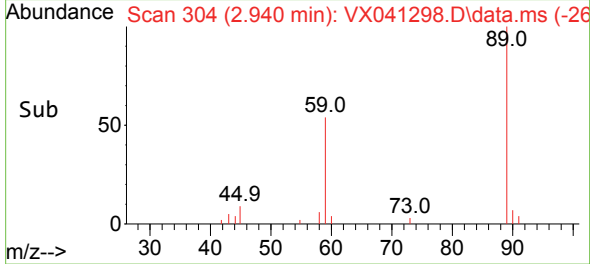
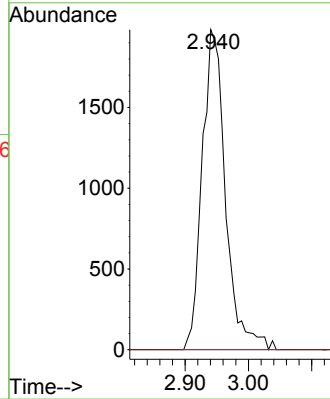


#11
 Tert butyl alcohol
 Concen: 12.624 ug/l
 RT: 2.940 min Scan# 30
 Delta R.T. -0.079 min
 Lab File: VX041298.D
 Acq: 30 Apr 2024 14:45

Instrument : MSVOA_X
 ClientSampleId :

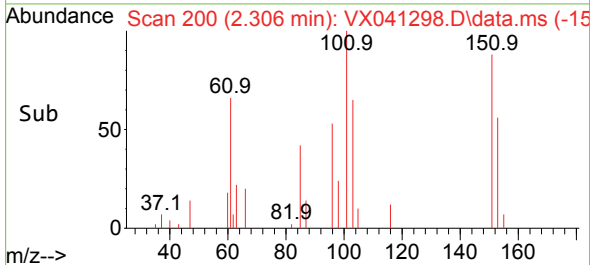
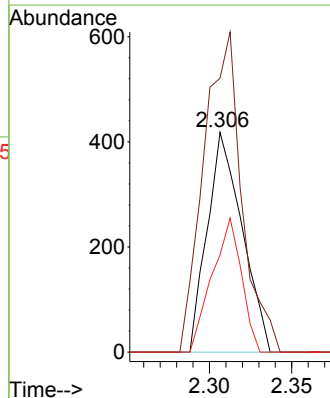
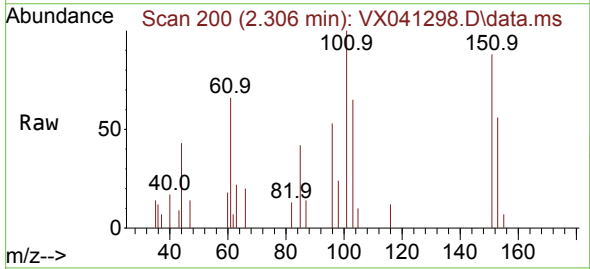


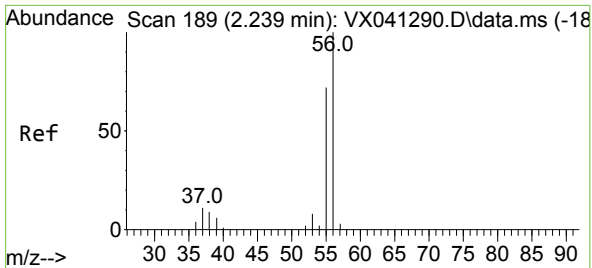
Tgt Ion: 59 Resp: 5099
 Ion Ratio Lower Upper
 59 100
 57 0.0 6.0 9.0#



#12
 1,1-Dichloroethene
 Concen: 0.427 ug/l
 RT: 2.306 min Scan# 200
 Delta R.T. 0.000 min
 Lab File: VX041298.D
 Acq: 30 Apr 2024 14:45

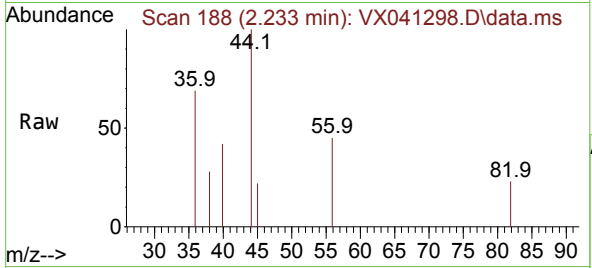
Tgt Ion: 96 Resp: 614
 Ion Ratio Lower Upper
 96 100
 61 124.6 144.6 216.8#
 98 44.3 50.4 75.6#



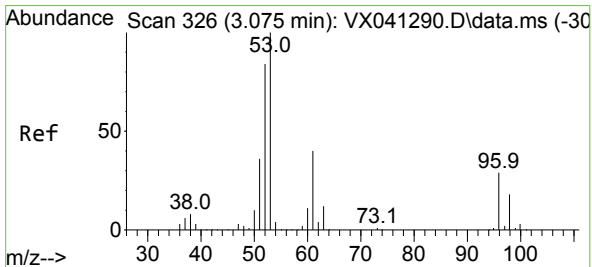
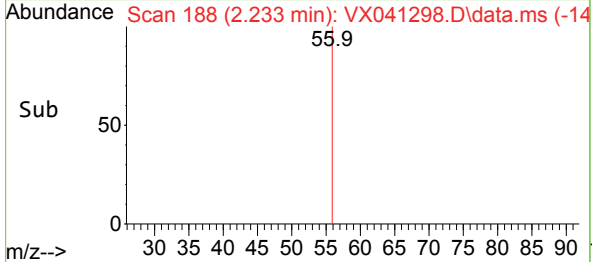
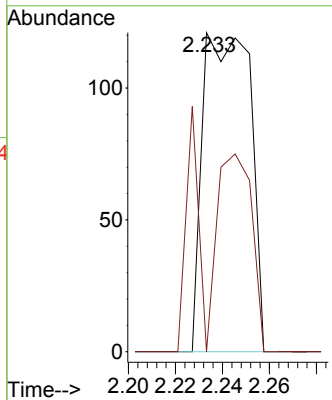


#13
 Acrolein
 Concen: 0.527 ug/l
 RT: 2.233 min Scan# 11
 Delta R.T. -0.006 min
 Lab File: VX041298.D
 Acq: 30 Apr 2024 14:45

Instrument :
 MSVOA_X
 ClientSampleId :

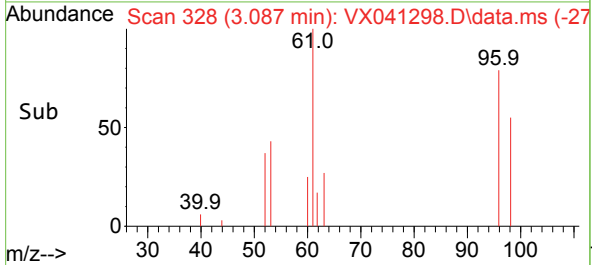
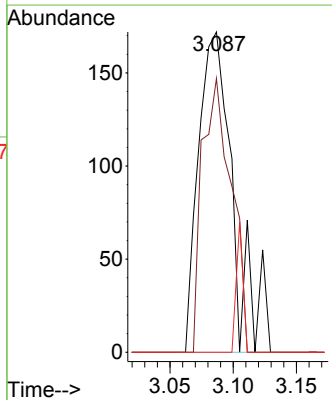
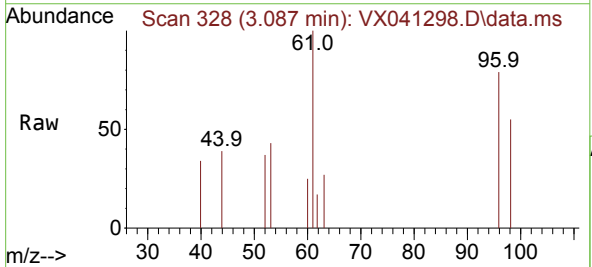


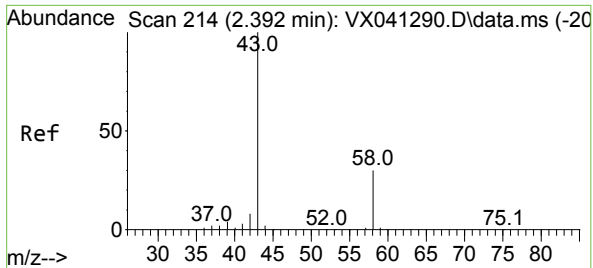
Tgt Ion: 56 Resp: 169
 Ion Ratio Lower Upper
 56 100
 55 20.1 57.1 85.7#



#15
 Acrylonitrile
 Concen: 0.356 ug/l
 RT: 3.087 min Scan# 328
 Delta R.T. 0.012 min
 Lab File: VX041298.D
 Acq: 30 Apr 2024 14:45

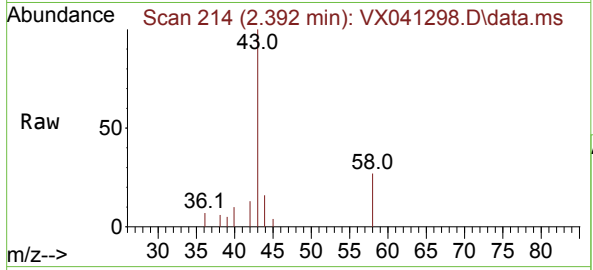
Tgt Ion: 53 Resp: 328
 Ion Ratio Lower Upper
 53 100
 52 72.0 66.0 99.0
 51 7.9 29.8 44.6#



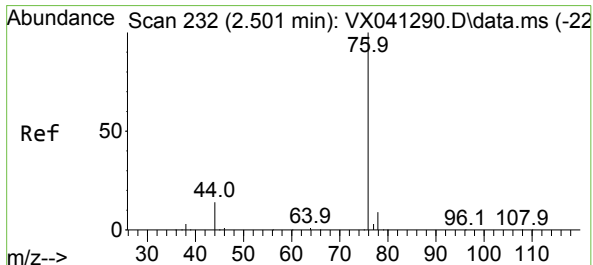
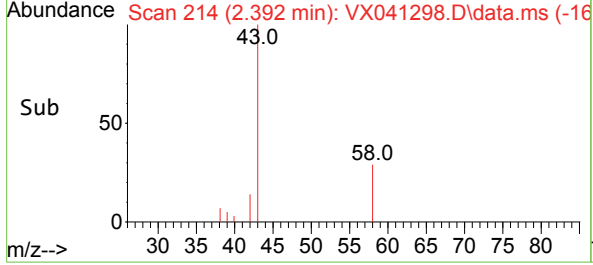
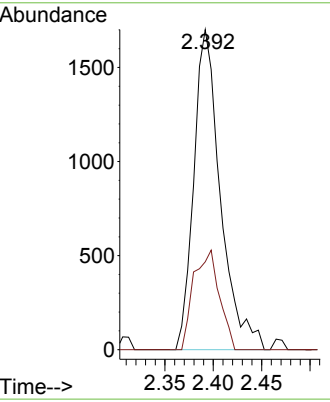


#16
 Acetone
 Concen: Below Cal
 RT: 2.392 min Scan# 216
 Delta R.T. -0.000 min
 Lab File: VX041298.D
 Acq: 30 Apr 2024 14:45

Instrument : MSVOA_X
 ClientSampleId :

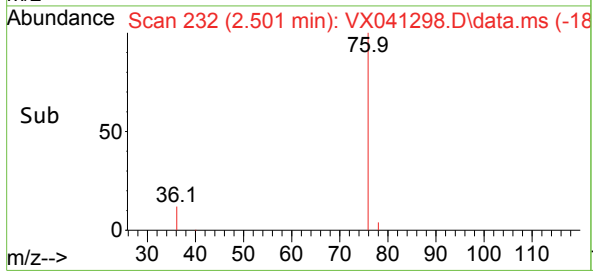
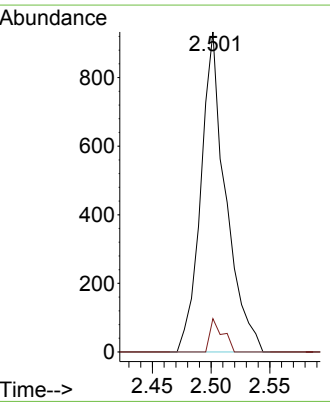
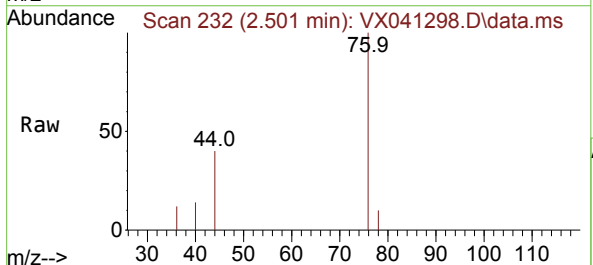


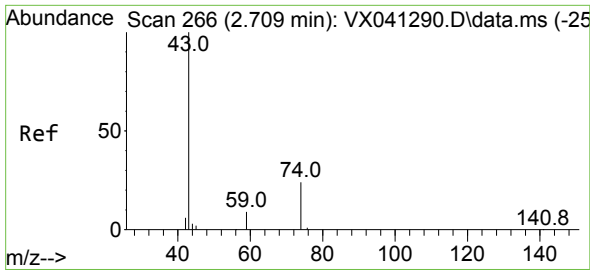
Tgt Ion: 43 Resp: 3261
 Ion Ratio Lower Upper
 43 100
 58 27.5 21.9 32.9



#17
 Carbon Disulfide
 Concen: 0.408 ug/l
 RT: 2.501 min Scan# 232
 Delta R.T. 0.000 min
 Lab File: VX041298.D
 Acq: 30 Apr 2024 14:45

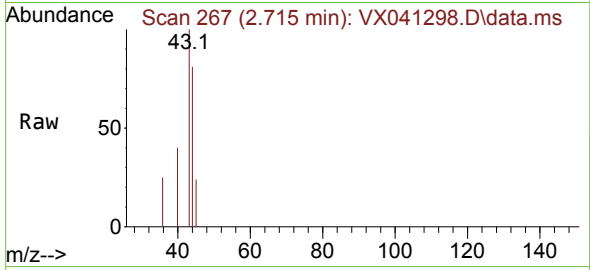
Tgt Ion: 76 Resp: 1377
 Ion Ratio Lower Upper
 76 100
 78 10.4 7.0 10.6



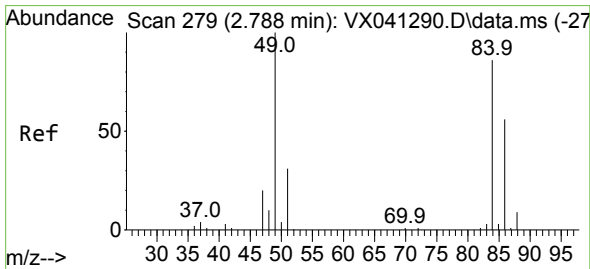
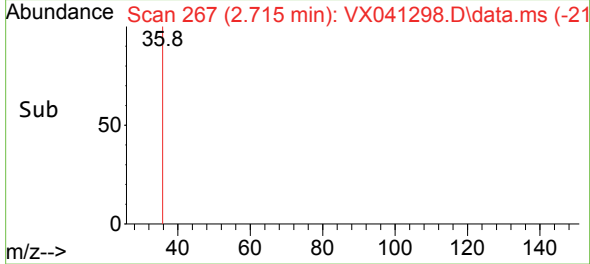
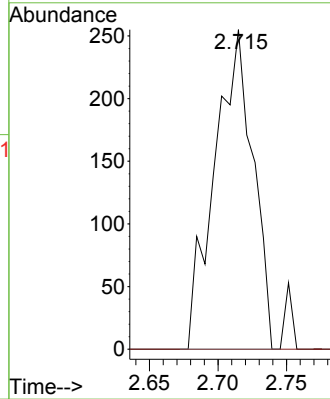


#18
Methyl Acetate
Concen: 0.241 ug/l
RT: 2.715 min Scan# 20
Delta R.T. 0.006 min
Lab File: VX041298.D
Acq: 30 Apr 2024 14:45

Instrument :
MSVOA_X
ClientSampleId :

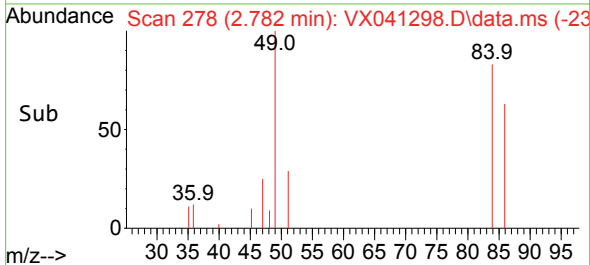
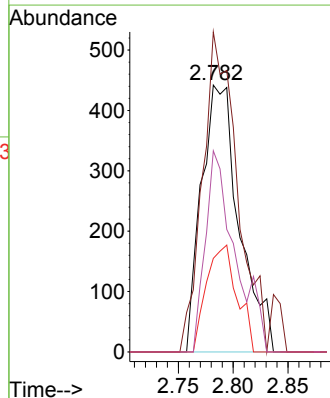
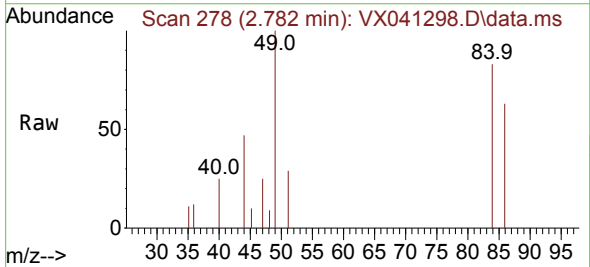


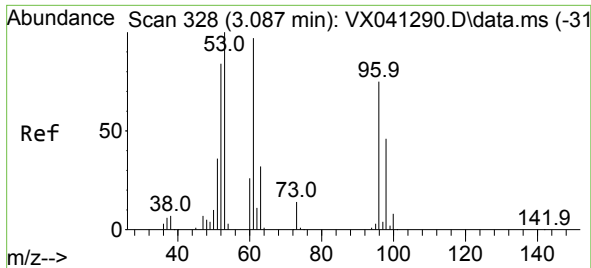
Tgt Ion: 43 Resp: 497
Ion Ratio Lower Upper
43 100
74 0.0 17.8 26.8#



#20
Methylene Chloride
Concen: 0.607 ug/l
RT: 2.782 min Scan# 278
Delta R.T. -0.006 min
Lab File: VX041298.D
Acq: 30 Apr 2024 14:45

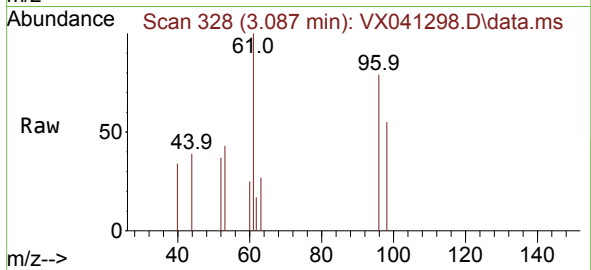
Tgt Ion: 84 Resp: 1063
Ion Ratio Lower Upper
84 100
49 119.9 103.6 155.4
51 35.1 33.8 50.6
86 75.3 49.4 74.0#





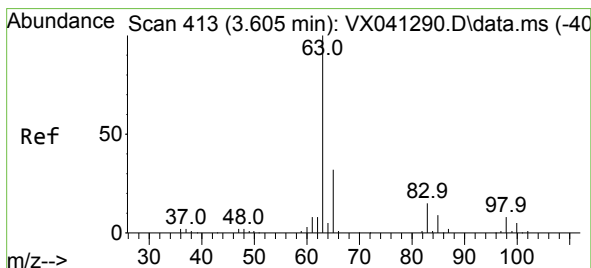
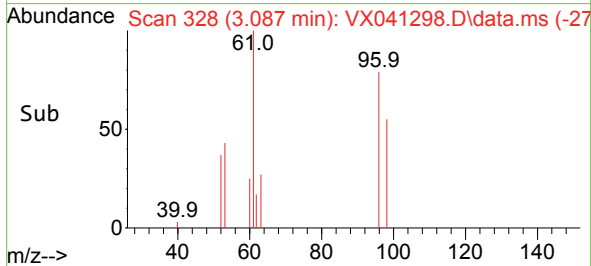
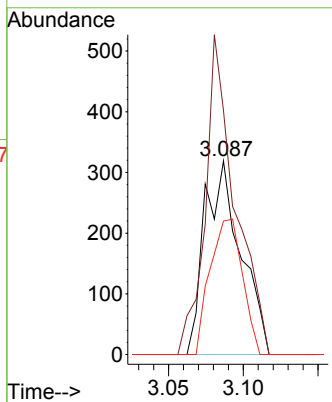
#21
 trans-1,2-Dichloroethene
 Concen: 0.335 ug/l
 RT: 3.087 min Scan# 31
 Delta R.T. 0.000 min
 Lab File: VX041298.D
 Acq: 30 Apr 2024 14:45

Instrument : MSVOA_X
 ClientSampleId :



Tgt Ion: 96 Resp: 537

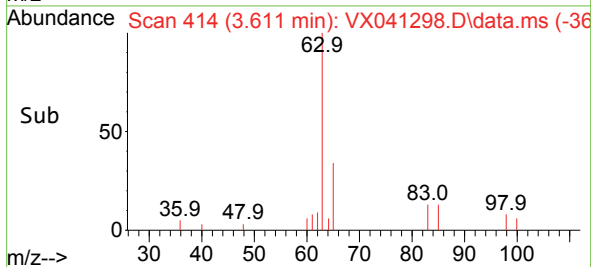
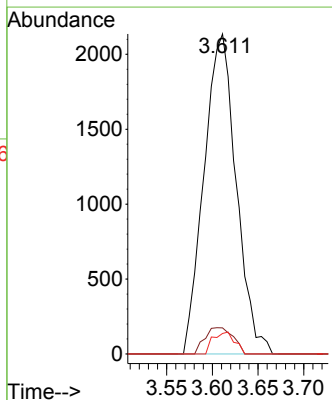
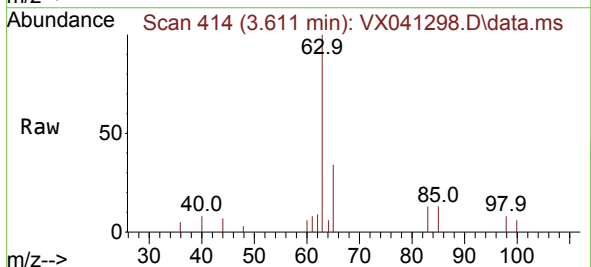
Ion	Ratio	Lower	Upper
96	100		
61	126.0	119.2	178.8
98	69.0	48.7	73.1

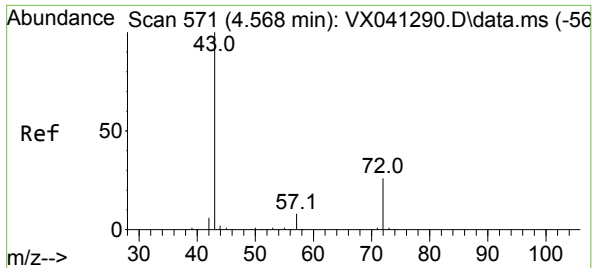


#24
 1,1-Dichloroethane
 Concen: 1.811 ug/l
 RT: 3.611 min Scan# 414
 Delta R.T. 0.006 min
 Lab File: VX041298.D
 Acq: 30 Apr 2024 14:45

Tgt Ion: 63 Resp: 5234

Ion	Ratio	Lower	Upper
63	100		
98	8.1	3.3	9.8
100	6.4	2.1	6.5

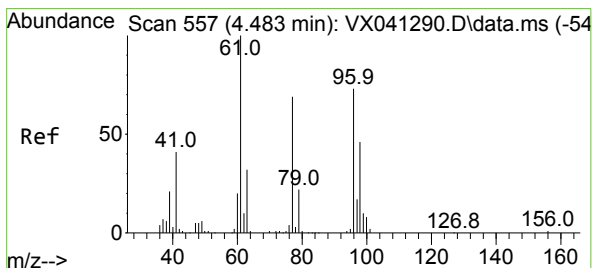
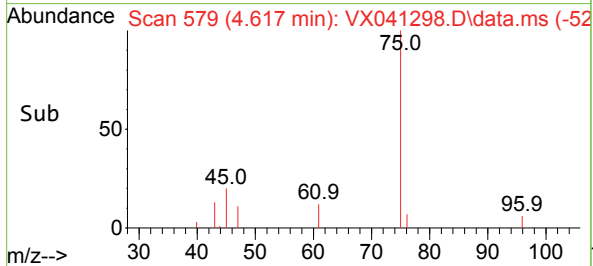
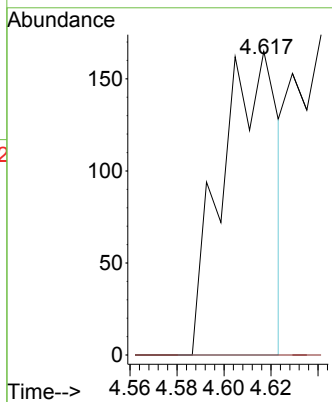
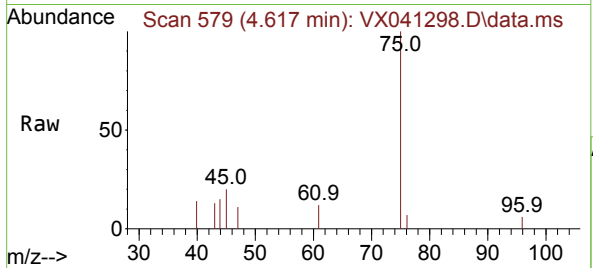




#25
 2-Butanone
 Concen: 0.208 ug/l
 RT: 4.617 min Scan# 51
 Delta R.T. 0.049 min
 Lab File: VX041298.D
 Acq: 30 Apr 2024 14:45

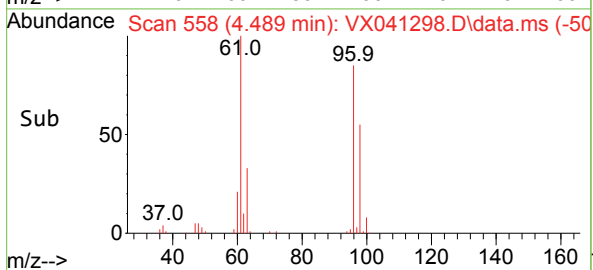
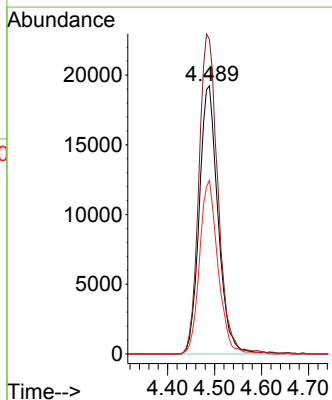
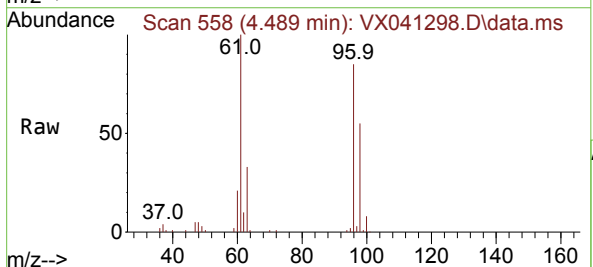
Instrument :
 MSVOA_X
 ClientSampleId :

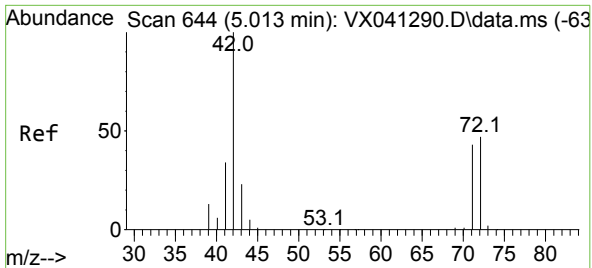
Tgt Ion: 43 Resp: 272
 Ion Ratio Lower Upper
 43 100
 72 0.0 19.4 29.2#



#27
 cis-1,2-Dichloroethene
 Concen: 27.964 ug/l
 RT: 4.489 min Scan# 558
 Delta R.T. 0.006 min
 Lab File: VX041298.D
 Acq: 30 Apr 2024 14:45

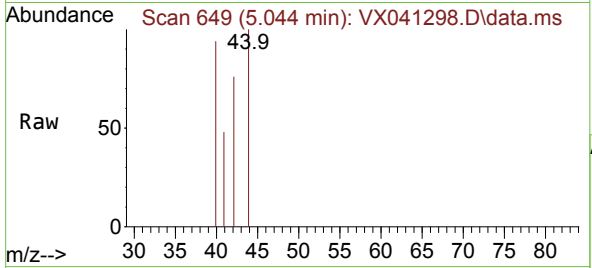
Tgt Ion: 96 Resp: 53153
 Ion Ratio Lower Upper
 96 100
 61 120.7 0.0 312.2
 98 63.7 0.0 129.0



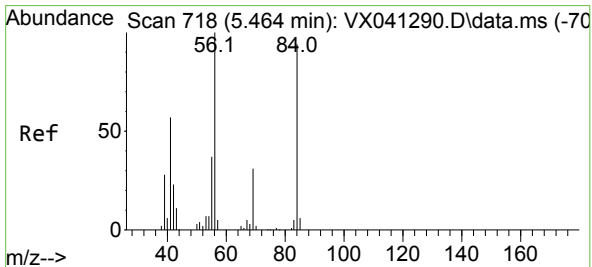
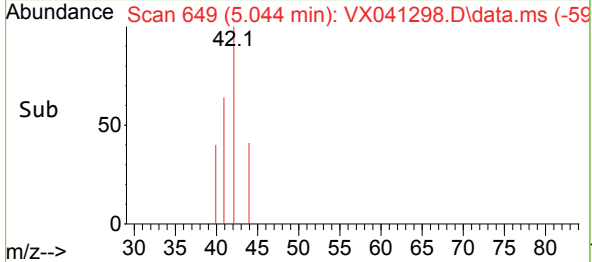
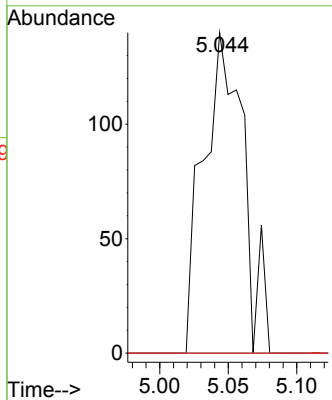


#29
 Tetrahydrofuran
 Concen: 0.335 ug/l
 RT: 5.044 min Scan# 649
 Delta R.T. 0.030 min
 Lab File: VX041298.D
 Acq: 30 Apr 2024 14:45

Instrument :
 MSVOA_X
 ClientSampleId :

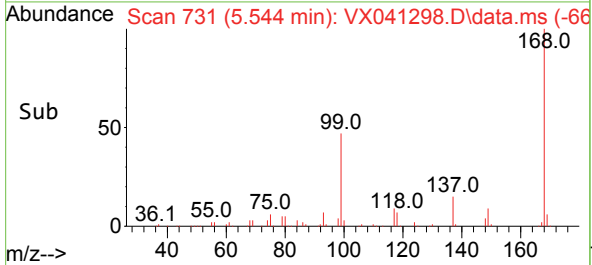
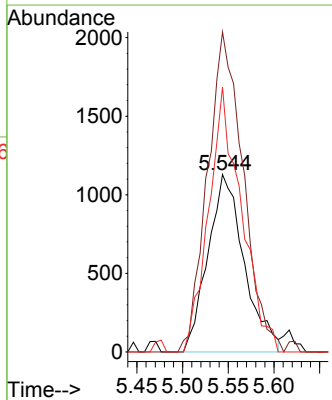
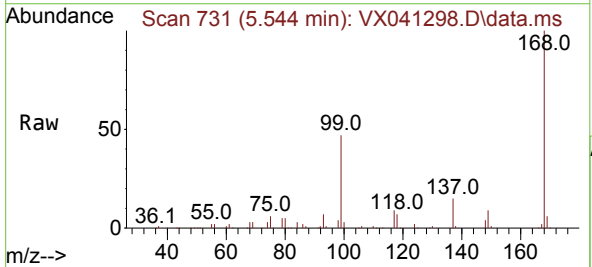


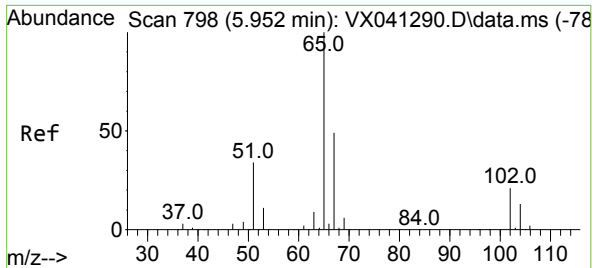
Tgt Ion	Resp	Lower	Upper
42	100		
72	0.0	34.2	51.4#
71	0.0	32.2	48.2#



#31
 Cyclohexane
 Concen: 1.279 ug/l
 RT: 5.544 min Scan# 731
 Delta R.T. 0.079 min
 Lab File: VX041298.D
 Acq: 30 Apr 2024 14:45

Tgt Ion	Resp	Lower	Upper
56	100		
69	180.3	23.4	35.2#
84	149.3	65.9	98.9#

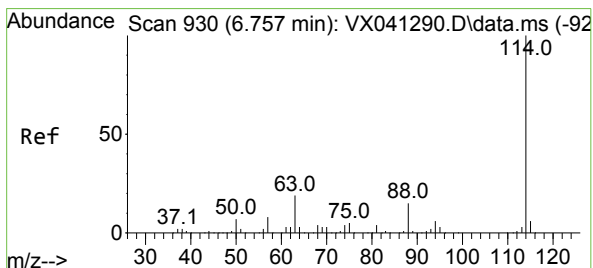
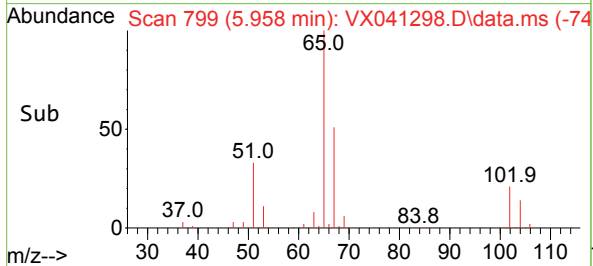
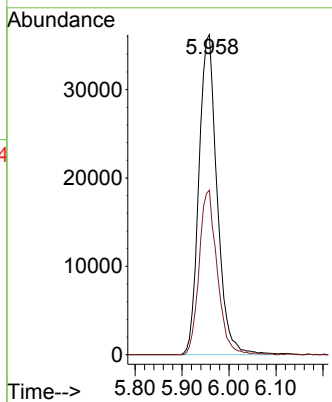
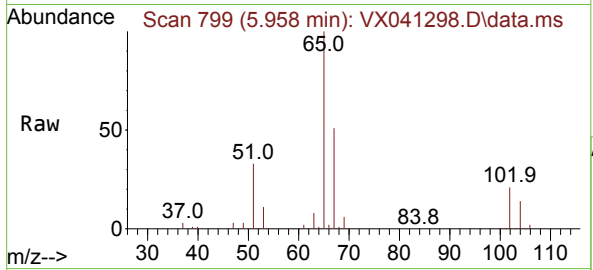




#33
 1,2-Dichloroethane-d4
 Concen: 48.213 ug/l
 RT: 5.958 min Scan# 798
 Delta R.T. 0.006 min
 Lab File: VX041298.D
 Acq: 30 Apr 2024 14:45

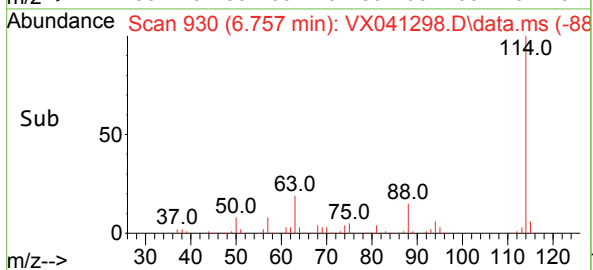
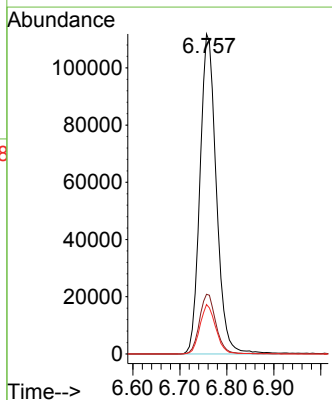
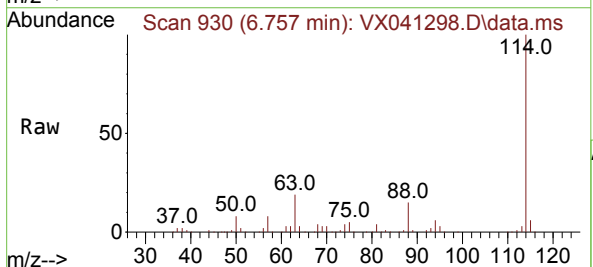
Instrument : MSVOA_X
 ClientSampleId :

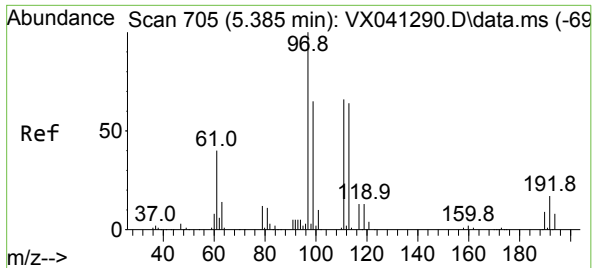
Tgt Ion: 65 Resp: 97296
 Ion Ratio Lower Upper
 65 100
 67 51.1 0.0 100.2



#34
 1,4-Difluorobenzene
 Concen: 50.000 ug/l
 RT: 6.757 min Scan# 930
 Delta R.T. 0.000 min
 Lab File: VX041298.D
 Acq: 30 Apr 2024 14:45

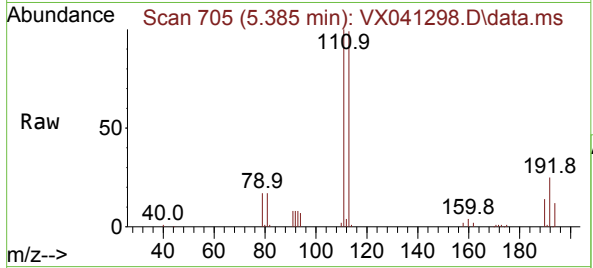
Tgt Ion: 114 Resp: 270197
 Ion Ratio Lower Upper
 114 100
 63 18.7 0.0 45.0
 88 15.4 0.0 36.6



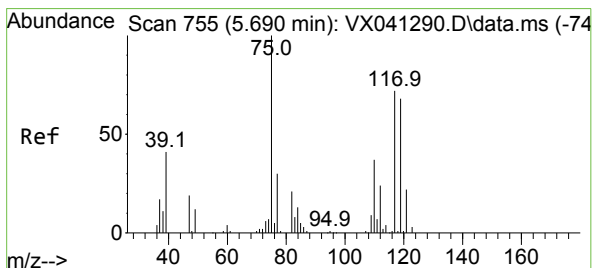
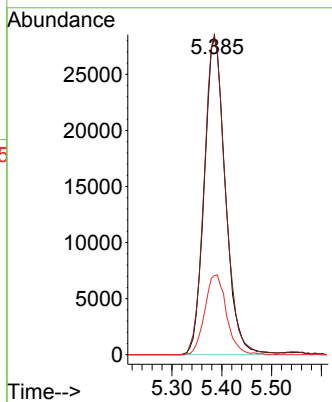
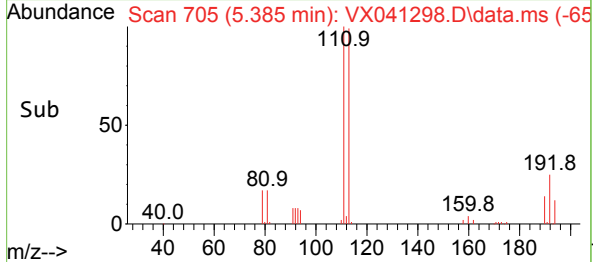


#35
 Dibromofluoromethane
 Concen: 45.235 ug/l
 RT: 5.385 min Scan# 705
 Delta R.T. 0.000 min
 Lab File: VX041298.D
 Acq: 30 Apr 2024 14:45

Instrument : MSVOA_X
 ClientSampleId :

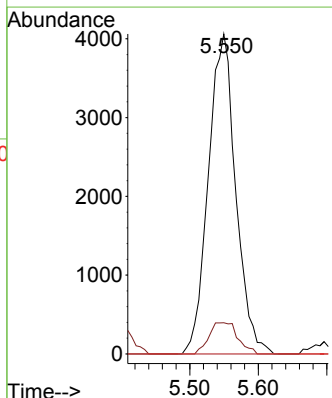
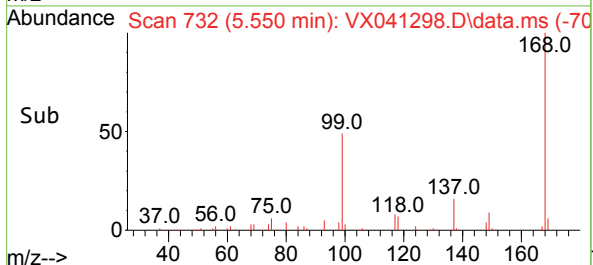
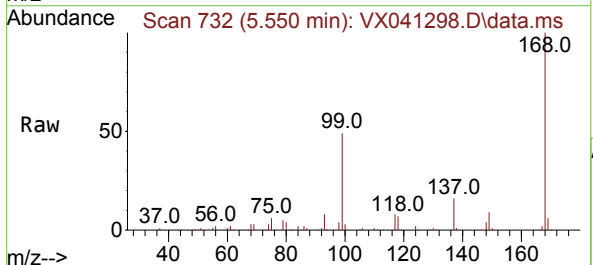


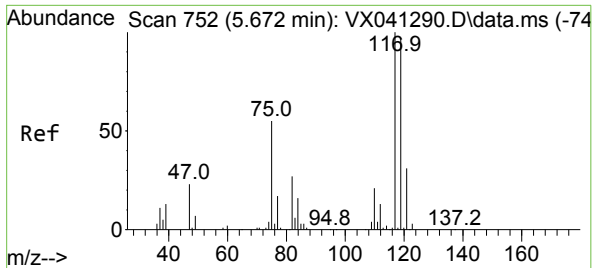
Tgt Ion: 113 Resp: 82827
 Ion Ratio Lower Upper
 113 100
 111 101.5 82.9 124.3
 192 26.0 13.3 19.9#



#36
 1,1-Dichloropropene
 Concen: 5.149 ug/l
 RT: 5.550 min Scan# 732
 Delta R.T. -0.140 min
 Lab File: VX041298.D
 Acq: 30 Apr 2024 14:45

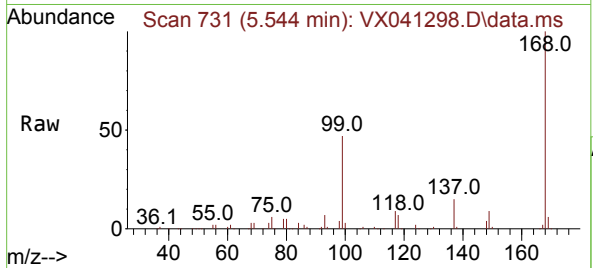
Tgt Ion: 75 Resp: 11274
 Ion Ratio Lower Upper
 75 100
 110 10.3 17.0 50.9#
 77 0.0 24.7 37.1#



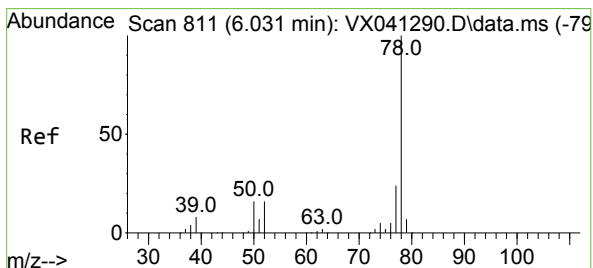
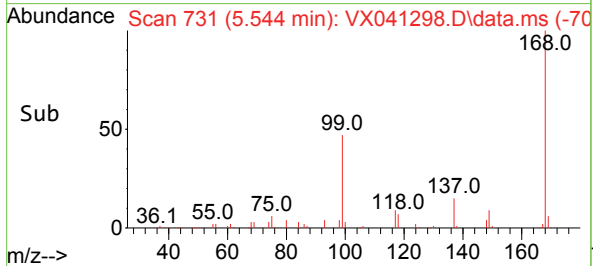
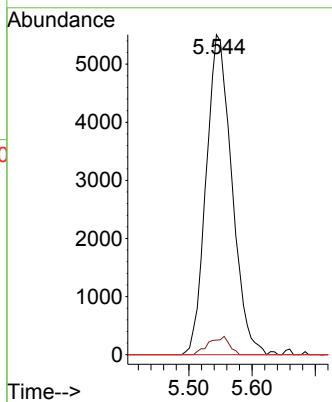


#38
 Carbon Tetrachloride
 Concen: 6.219 ug/l
 RT: 5.544 min Scan# 711
 Delta R.T. -0.128 min
 Lab File: VX041298.D
 Acq: 30 Apr 2024 14:45

Instrument : MSVOA_X
 ClientSampleId :

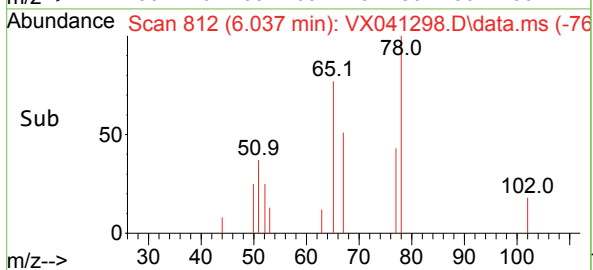
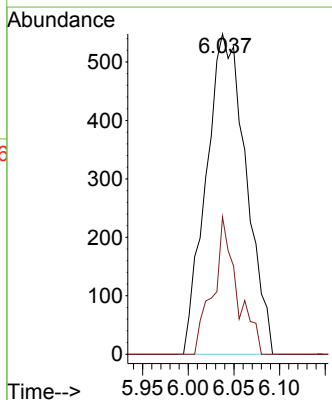
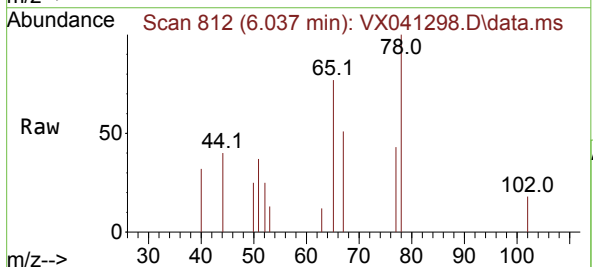


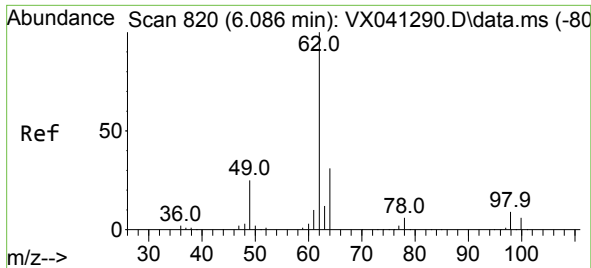
Tgt Ion:117 Resp: 15598
 Ion Ratio Lower Upper
 117 100
 119 4.5 78.2 117.2#
 121 0.0 24.4 36.6#



#40
 Benzene
 Concen: 0.246 ug/l
 RT: 6.037 min Scan# 812
 Delta R.T. 0.006 min
 Lab File: VX041298.D
 Acq: 30 Apr 2024 14:45

Tgt Ion: 78 Resp: 1660
 Ion Ratio Lower Upper
 78 100
 77 42.9 19.3 28.9#

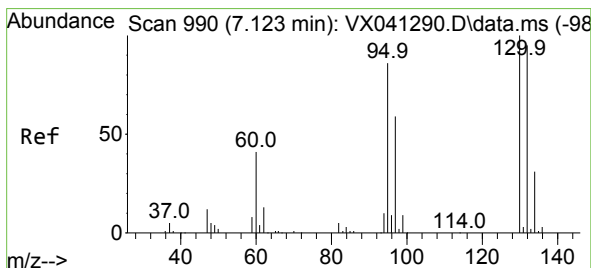
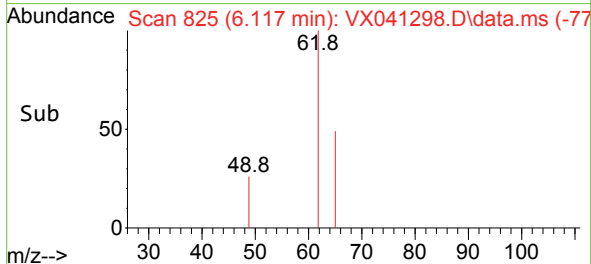
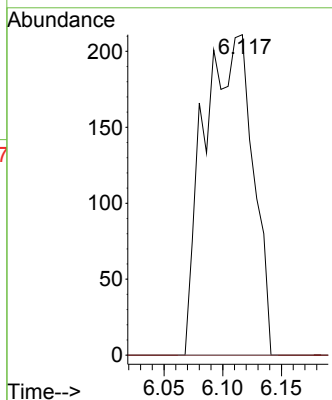
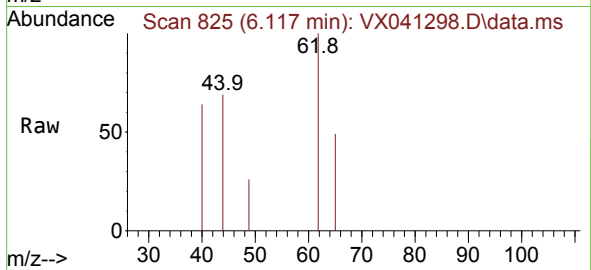




#42
 1,2-Dichloroethane
 Concen: 0.247 ug/l
 RT: 6.117 min Scan# 81
 Delta R.T. 0.030 min
 Lab File: VX041298.D
 Acq: 30 Apr 2024 14:45

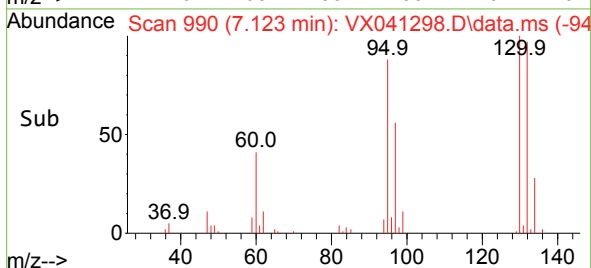
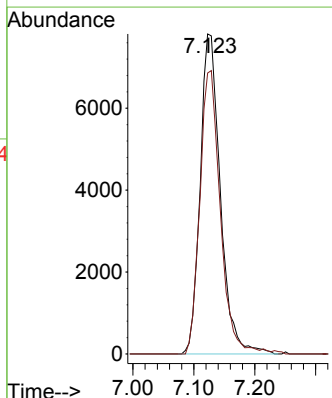
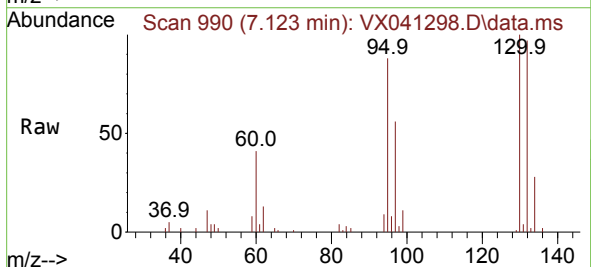
Instrument :
 MSVOA_X
 ClientSampleId :

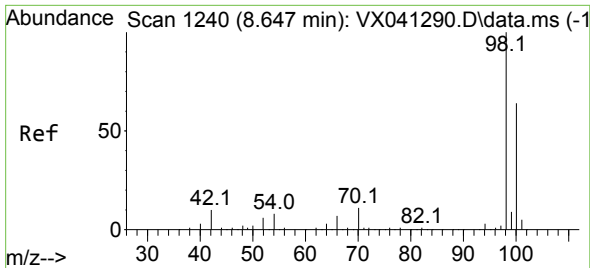
Tgt Ion: 62 Resp: 612
 Ion Ratio Lower Upper
 62 100
 98 0.0 0.0 16.0



#44
 Trichloroethene
 Concen: 10.089 ug/l
 RT: 7.123 min Scan# 990
 Delta R.T. -0.000 min
 Lab File: VX041298.D
 Acq: 30 Apr 2024 14:45

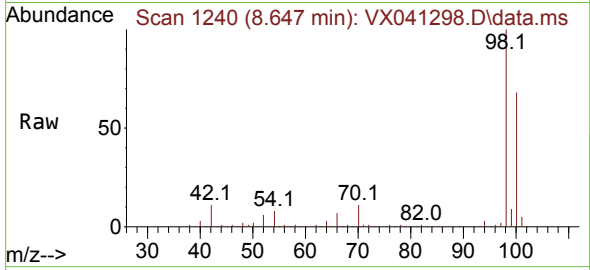
Tgt Ion:130 Resp: 17982
 Ion Ratio Lower Upper
 130 100
 95 87.8 0.0 204.4



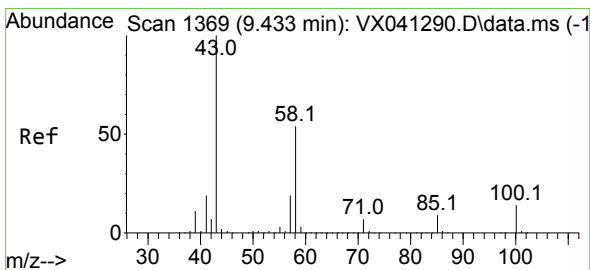
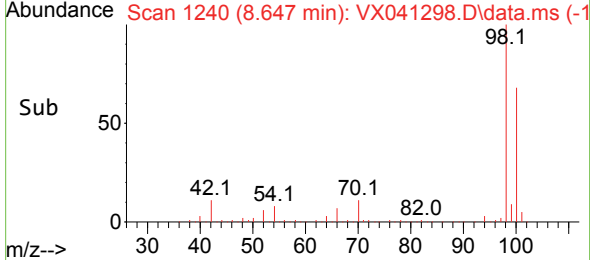
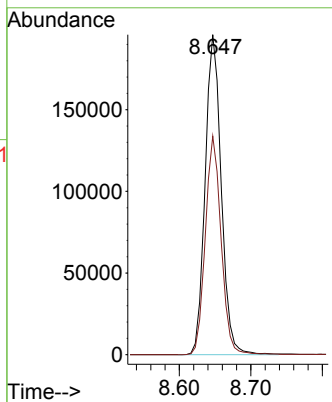


#50
 Toluene-d8
 Concen: 52.854 ug/l
 RT: 8.647 min Scan# 11
 Delta R.T. -0.000 min
 Lab File: VX041298.D
 Acq: 30 Apr 2024 14:45

Instrument :
 MSVOA_X
 ClientSampleId :

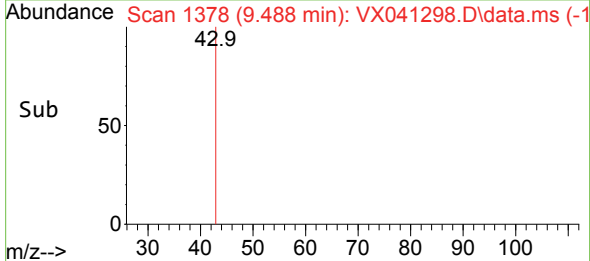
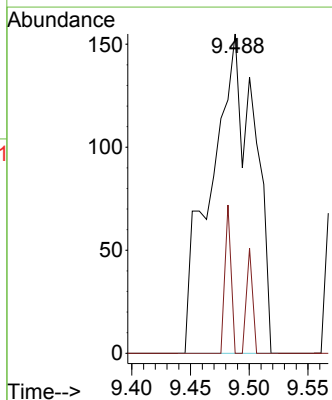
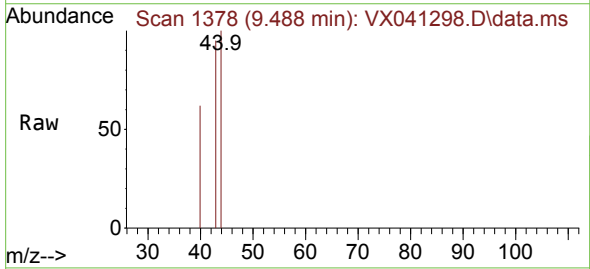


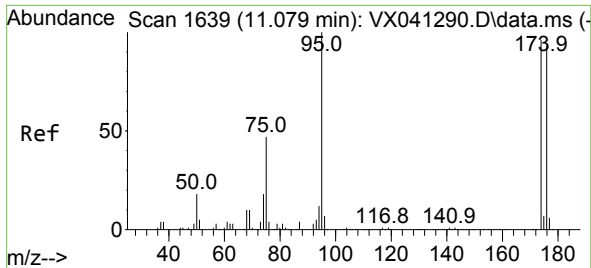
Tgt Ion: 98 Resp: 306309
 Ion Ratio Lower Upper
 98 100
 100 67.2 53.1 79.7



#59
 2-Hexanone
 Concen: 0.202 ug/l
 RT: 9.488 min Scan# 1378
 Delta R.T. 0.055 min
 Lab File: VX041298.D
 Acq: 30 Apr 2024 14:45

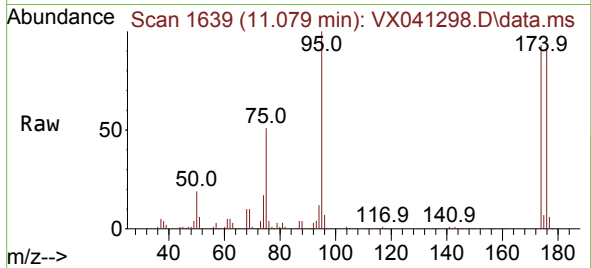
Tgt Ion: 43 Resp: 398
 Ion Ratio Lower Upper
 43 100
 58 6.5 26.2 78.5#



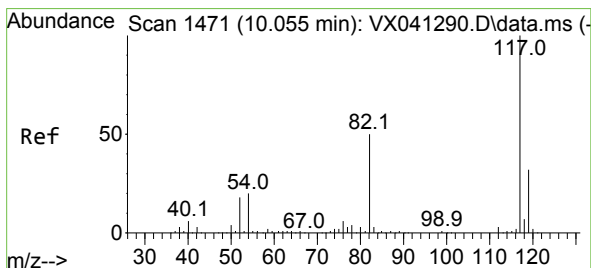
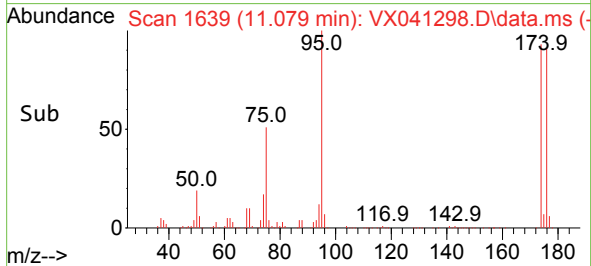
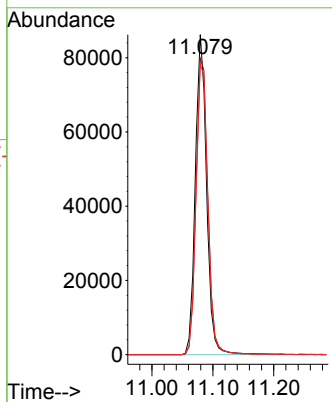


#62
 4-Bromofluorobenzene
 Concen: 49.229 ug/l
 RT: 11.079 min Scan# 1639
 Delta R.T. 0.000 min
 Lab File: VX041298.D
 Acq: 30 Apr 2024 14:45

Instrument :
 MSVOA_X
 ClientSampleId :

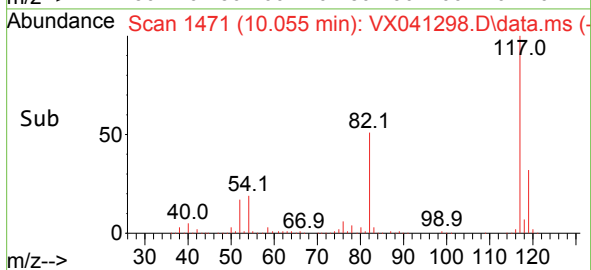
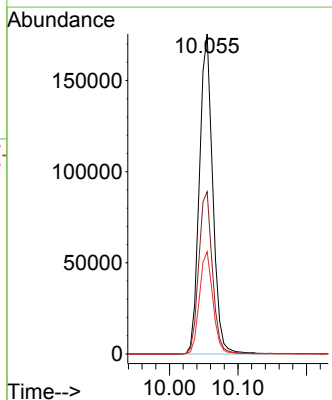
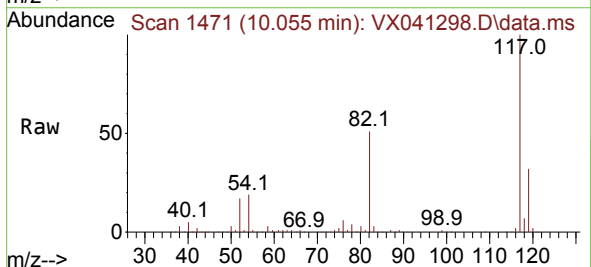


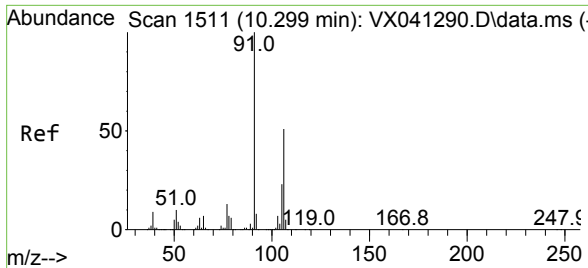
Tgt Ion: 95 Resp: 110443
 Ion Ratio Lower Upper
 95 100
 174 98.1 0.0 135.6
 176 94.9 0.0 131.0



#63
 Chlorobenzene-d5
 Concen: 50.000 ug/l
 RT: 10.055 min Scan# 1471
 Delta R.T. -0.000 min
 Lab File: VX041298.D
 Acq: 30 Apr 2024 14:45

Tgt Ion: 117 Resp: 238464
 Ion Ratio Lower Upper
 117 100
 82 50.7 46.2 69.4
 119 32.0 25.5 38.3

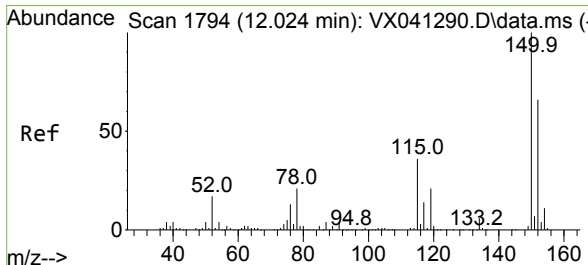
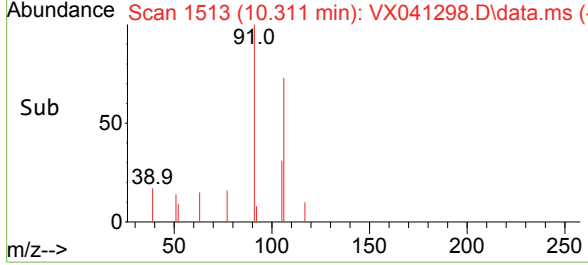
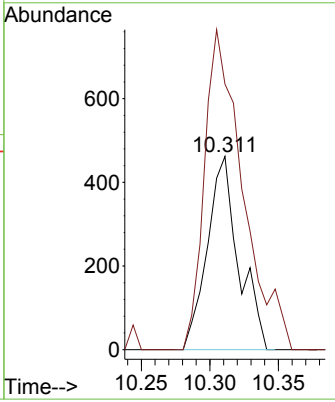
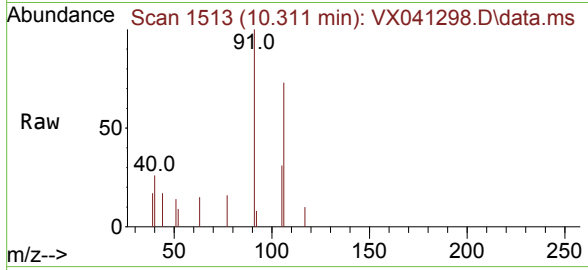




#68
 m/p-Xylenes
 Concen: 0.230 ug/l
 RT: 10.311 min Scan# 1511
 Delta R.T. 0.012 min
 Lab File: VX041298.D
 Acq: 30 Apr 2024 14:45

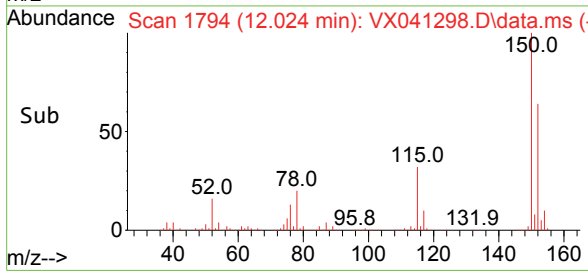
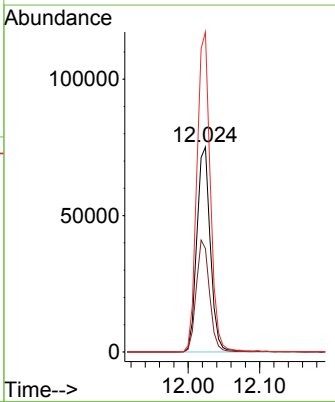
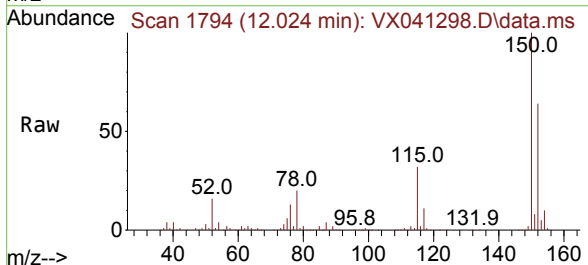
Instrument : MSVOA_X
 ClientSampleId :

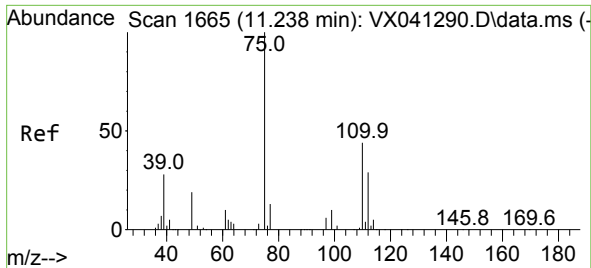
Tgt Ion:106 Resp: 736
 Ion Ratio Lower Upper
 106 100
 91 202.4 165.5 248.3



#72
 1,4-Dichlorobenzene-d4
 Concen: 50.000 ug/l
 RT: 12.024 min Scan# 1794
 Delta R.T. 0.000 min
 Lab File: VX041298.D
 Acq: 30 Apr 2024 14:45

Tgt Ion:152 Resp: 98573
 Ion Ratio Lower Upper
 152 100
 115 53.7 43.3 129.9
 150 156.1 0.0 345.0

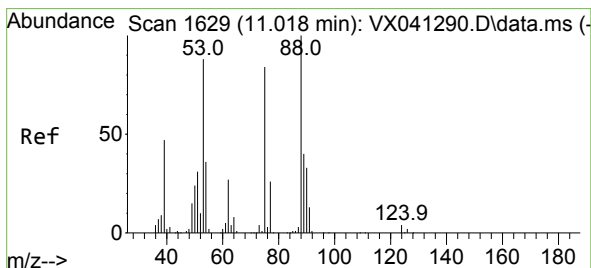
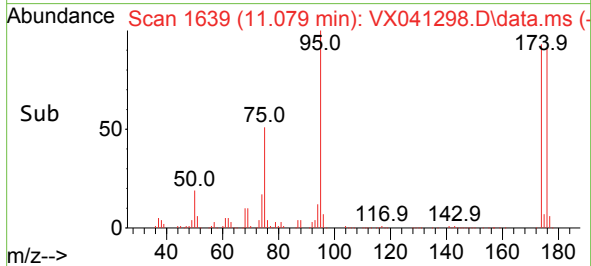
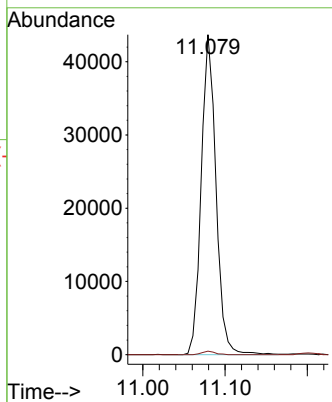
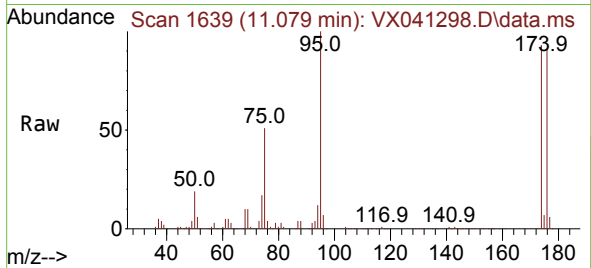




#76
 1,2,3-Trichloropropane
 Concen: 33.927 ug/l
 RT: 11.079 min Scan# 1639
 Delta R.T. -0.159 min
 Lab File: VX041298.D
 Acq: 30 Apr 2024 14:45

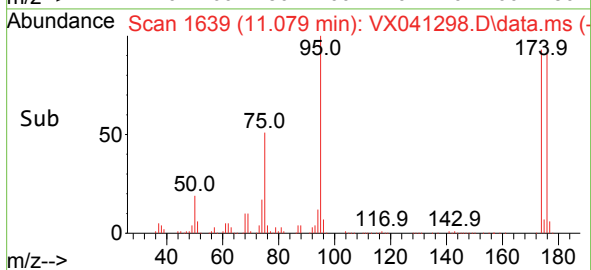
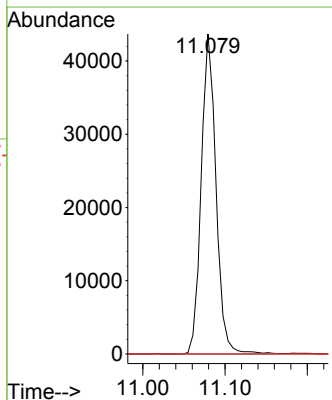
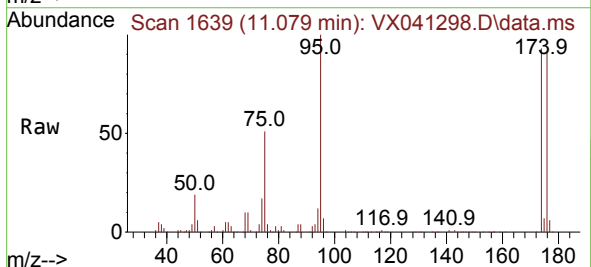
Instrument : MSVOA_X
 ClientSampleId :

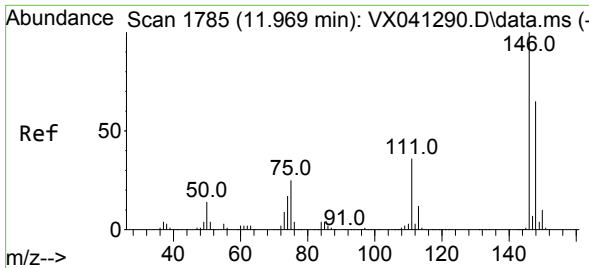
Tgt Ion: 75 Resp: 54502
 Ion Ratio Lower Upper
 75 100
 77 1.0 19.1 57.5#



#81
 trans-1,4-Dichloro-2-butene
 Concen: 92.414 ug/l
 RT: 11.079 min Scan# 1639
 Delta R.T. 0.061 min
 Lab File: VX041298.D
 Acq: 30 Apr 2024 14:45

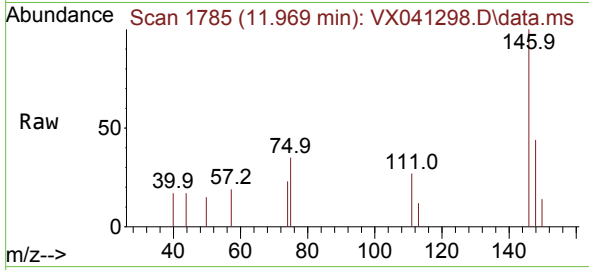
Tgt Ion: 75 Resp: 54502
 Ion Ratio Lower Upper
 75 100
 53 0.0 90.5 135.7#
 89 0.0 36.9 55.3#



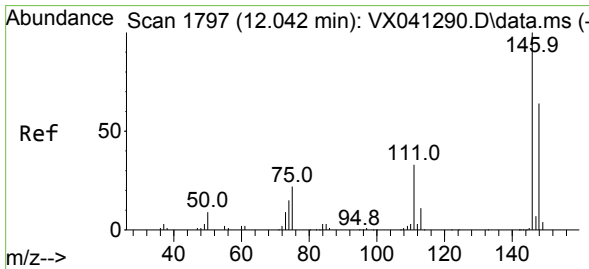
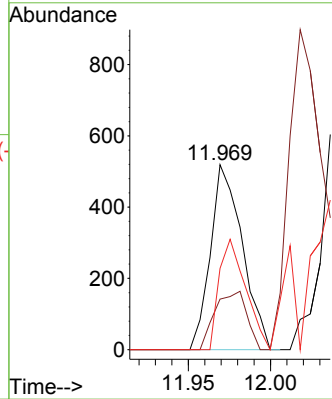
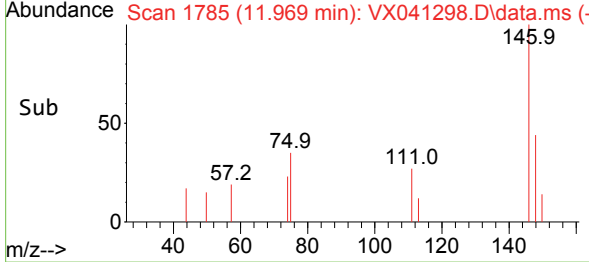


#87
 1,3-Dichlorobenzene
 Concen: 0.226 ug/l
 RT: 11.969 min Scan# 1785
 Delta R.T. 0.000 min
 Lab File: VX041298.D
 Acq: 30 Apr 2024 14:45

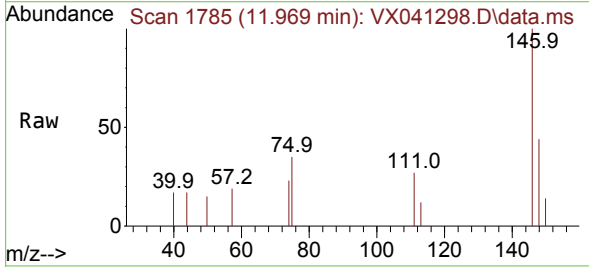
Instrument :
 MSVOA_X
 ClientSampleId :



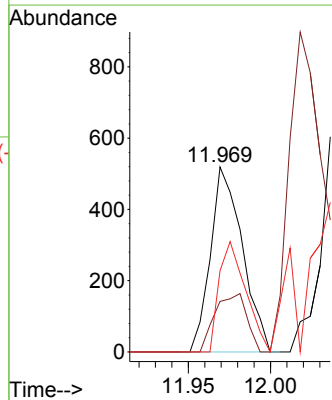
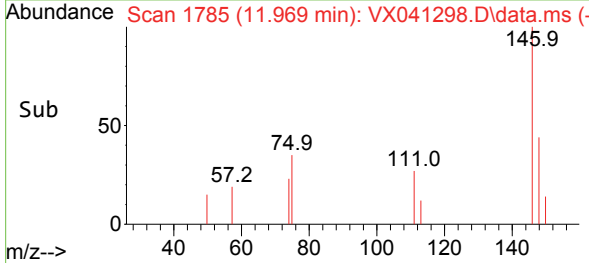
Tgt Ion:146 Resp: 699
 Ion Ratio Lower Upper
 146 100
 111 31.3 22.1 66.1
 148 49.9 31.8 95.3

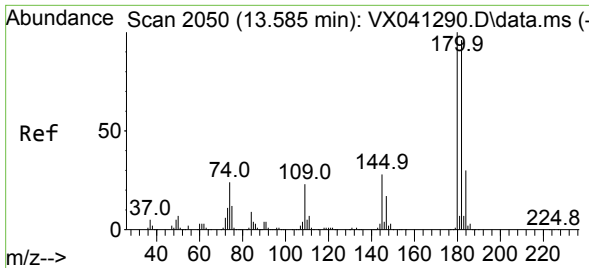


#88
 1,4-Dichlorobenzene
 Concen: 0.220 ug/l
 RT: 11.969 min Scan# 1785
 Delta R.T. -0.073 min
 Lab File: VX041298.D
 Acq: 30 Apr 2024 14:45



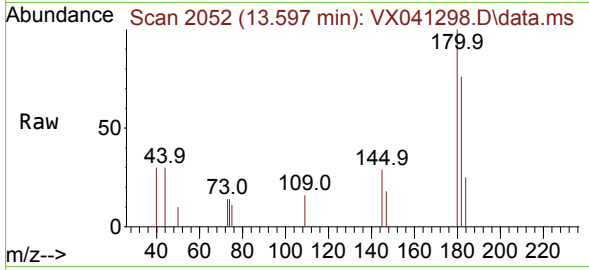
Tgt Ion:146 Resp: 699
 Ion Ratio Lower Upper
 146 100
 111 31.3 21.3 63.7
 148 49.9 31.8 95.4



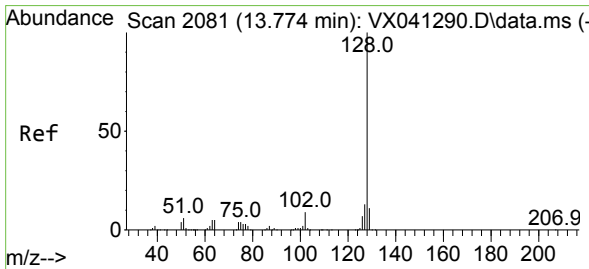
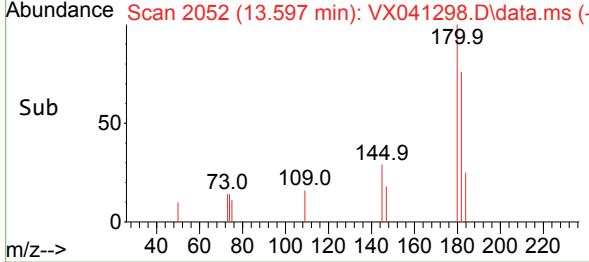
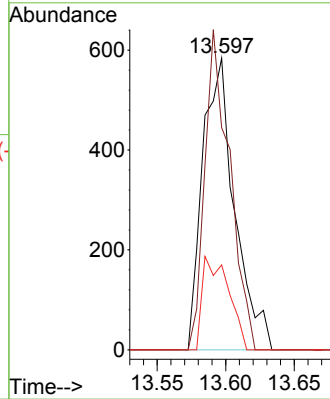


#93
 1,2,4-Trichlorobenzene
 Concen: 0.415 ug/l
 RT: 13.597 min Scan# 2052
 Delta R.T. 0.012 min
 Lab File: VX041298.D
 Acq: 30 Apr 2024 14:45

Instrument : MSVOA_X
 ClientSampleId :

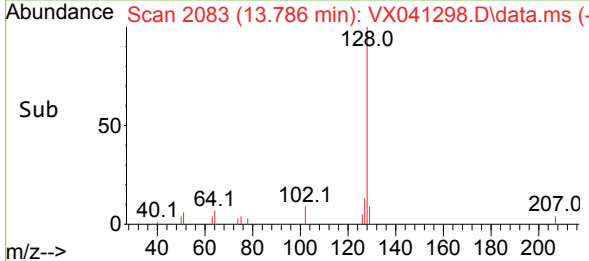
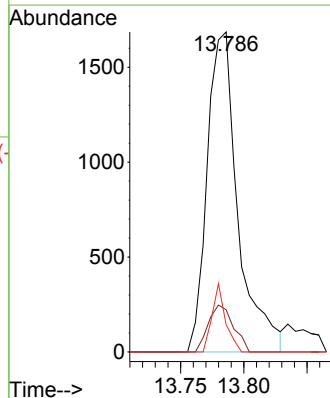
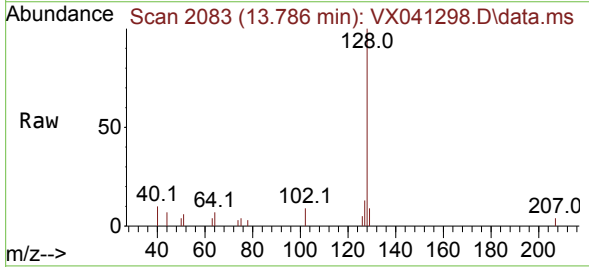


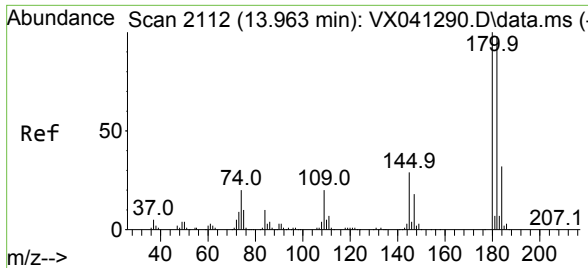
Tgt Ion:180 Resp: 946
 Ion Ratio Lower Upper
 180 100
 182 85.4 48.3 144.8
 145 26.2 18.0 54.0



#95
 Naphthalene
 Concen: 0.422 ug/l
 RT: 13.786 min Scan# 2083
 Delta R.T. 0.012 min
 Lab File: VX041298.D
 Acq: 30 Apr 2024 14:45

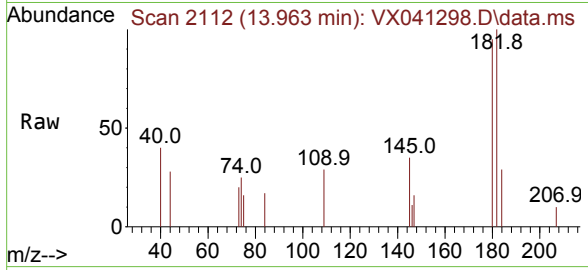
Tgt Ion:128 Resp: 2850
 Ion Ratio Lower Upper
 128 100
 127 12.0 10.3 15.5
 129 9.3 8.8 13.2





#96
 1,2,3-Trichlorobenzene
 Concen: 0.385 ug/l
 RT: 13.963 min Scan# 21
 Delta R.T. -0.000 min
 Lab File: VX041298.D
 Acq: 30 Apr 2024 14:45

Instrument :
 MSVOA_X
 ClientSampleId :



Tgt Ion:180 Resp: 897

Ion	Ratio	Lower	Upper
180	100		
182	98.4	46.9	140.6
145	33.0	17.8	53.5

