

Data Path : Z:\voasrv\HPCHEM1\MSVOA\_X\Data\VX050123\  
 Data File : VX035454.D  
 Acq On : 01 May 2023 20:34  
 Operator : JC/MD  
 Sample : 02515-19  
 Misc : 5.0mL/MSVOA\_X/WATER  
 ALS Vial : 27 Sample Multiplier: 1

Instrument :  
 MSVOA\_X  
 ClientSampleId :  
 TB-02

Quant Time: May 02 00:06:27 2023  
 Quant Method : Z:\voasrv\HPCHEM1\MSVOA\_X\Method\82X042523W.M  
 Quant Title : SW846 8260  
 QLast Update : Tue Apr 25 16:31:40 2023  
 Response via : Initial Calibration

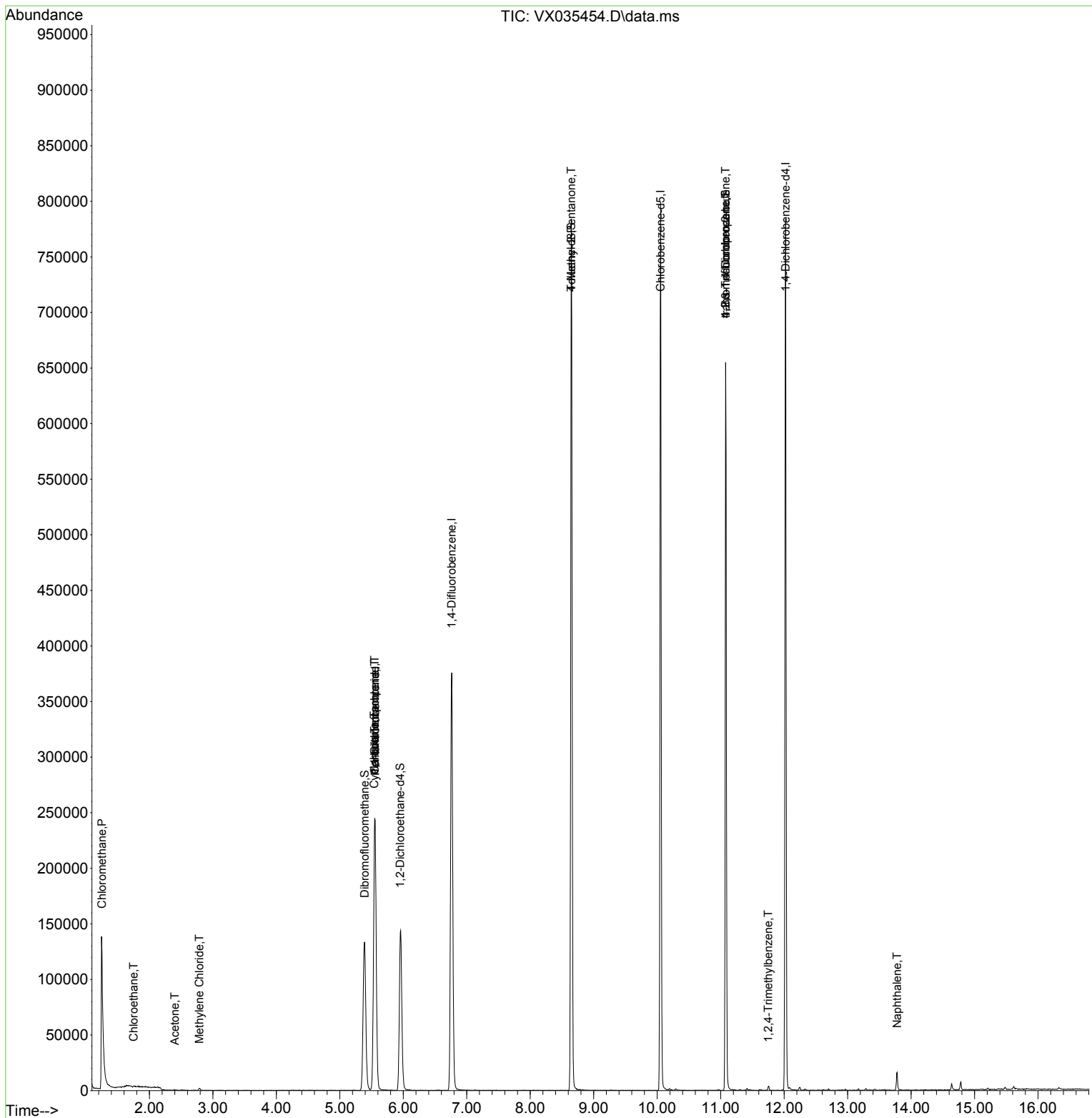
Compound	R.T.	QIon	Response	Conc	Units	Dev(Min)
-----						
Internal Standards						
1) Pentafluorobenzene	5.556	168	247759	50.000	ug/l	0.00
34) 1,4-Difluorobenzene	6.763	114	396954	50.000	ug/l	0.00
63) Chlorobenzene-d5	10.055	117	362348	50.000	ug/l	0.00
72) 1,4-Dichlorobenzene-d4	12.024	152	172725	50.000	ug/l	0.00
System Monitoring Compounds						
33) 1,2-Dichloroethane-d4	5.952	65	143357	47.960	ug/l	0.00
Spiked Amount	50.000	Range	78 - 117	Recovery	=	95.920%
35) Dibromofluoromethane	5.391	113	121473	49.858	ug/l	0.00
Spiked Amount	50.000	Range	75 - 124	Recovery	=	99.720%
50) Toluene-d8	8.647	98	467623	50.879	ug/l	0.00
Spiked Amount	50.000	Range	92 - 112	Recovery	=	101.760%
62) 4-Bromofluorobenzene	11.079	95	178146	51.525	ug/l	0.00
Spiked Amount	50.000	Range	83 - 123	Recovery	=	103.060%
Target Compounds						
					Qvalue	
3) Chloromethane	1.252	50	4226	1.772	ug/l #	42
6) Chloroethane	1.752	64	446	0.319	ug/l #	42
16) Acetone	2.398	43	592	0.456	ug/l #	44
20) Methylene Chloride	2.788	84	834	0.280	ug/l #	71
31) Cyclohexane	5.544	56	4170	0.983	ug/l #	1
36) 1,1-Dichloropropene	5.550	75	17016	4.473	ug/l #	53
38) Carbon Tetrachloride	5.550	117	24085	6.669	ug/l #	15
51) 4-Methyl-2-Pentanone	8.647	43	1681	0.469	ug/l #	1
76) 1,2,3-Trichloropropane	11.079	75	87032	25.260	ug/l #	34
81) trans-1,4-Dichloro-2-b...	11.079	75	87032	81.812	ug/l #	8
84) 1,2,4-Trimethylbenzene	11.750	105	2179	0.204	ug/l	87
95) Naphthalene	13.780	128	12175	1.055	ug/l	100
-----						

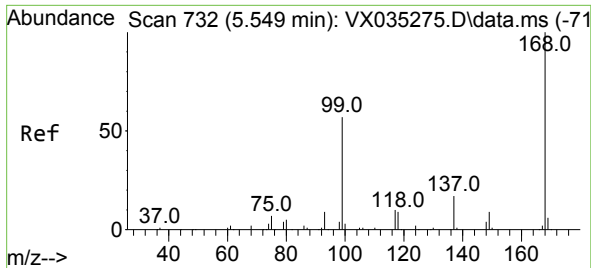
(#) = qualifier out of range (m) = manual integration (+) = signals summed

Data Path : Z:\voasrv\HPCHEM1\MSVOA\_X\Data\VX050123\  
 Data File : VX035454.D  
 Acq On : 01 May 2023 20:34  
 Operator : JC/MD  
 Sample : 02515-19  
 Misc : 5.0mL/MSVOA\_X/WATER  
 ALS Vial : 27 Sample Multiplier: 1

Instrument :  
 MSVOA\_X  
 ClientSampleId :  
 TB-02

Quant Time: May 02 00:06:27 2023  
 Quant Method : Z:\voasrv\HPCHEM1\MSVOA\_X\Method\82X042523W.M  
 Quant Title : SW846 8260  
 QLast Update : Tue Apr 25 16:31:40 2023  
 Response via : Initial Calibration

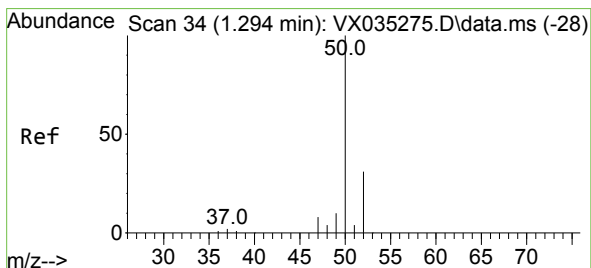
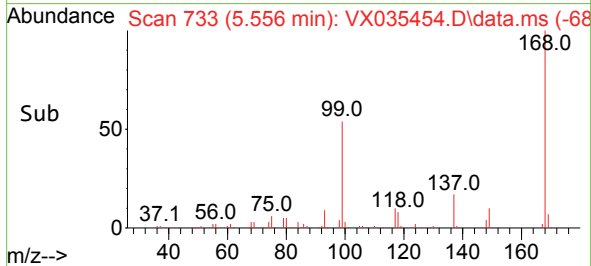
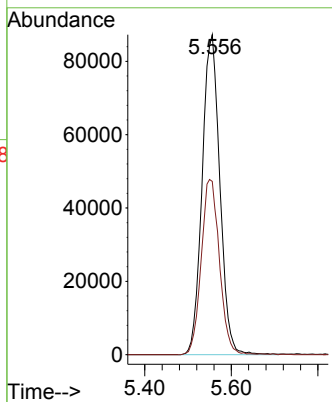
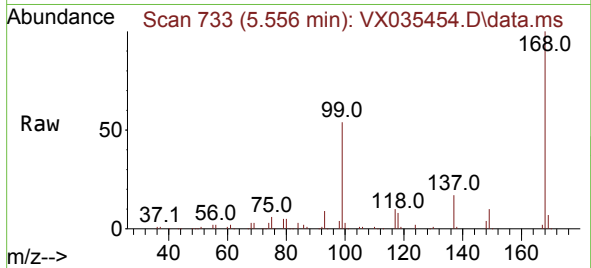




#1  
 Pentafluorobenzene  
 Concen: 50.000 ug/l  
 RT: 5.556 min Scan# 71  
 Delta R.T. 0.007 min  
 Lab File: VX035454.D  
 Acq: 01 May 2023 20:34

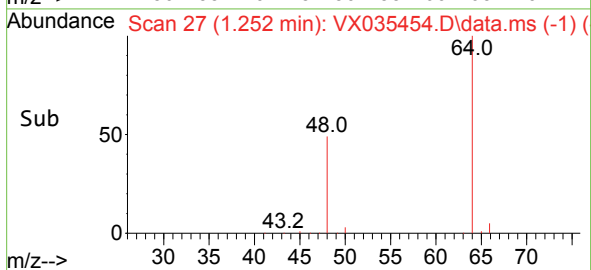
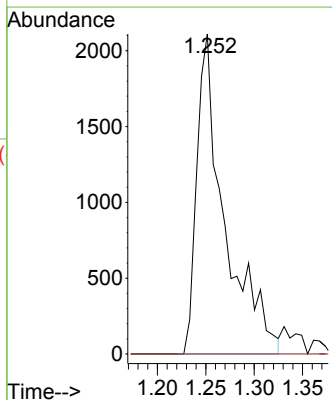
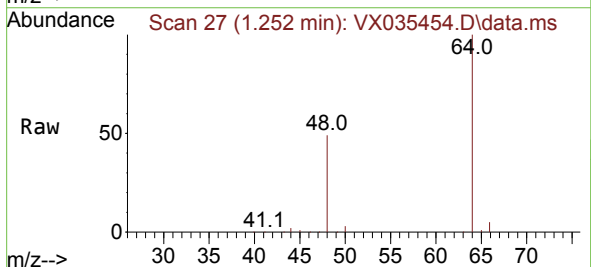
Instrument :  
 MSVOA\_X  
 ClientSampleId :  
 TB-02

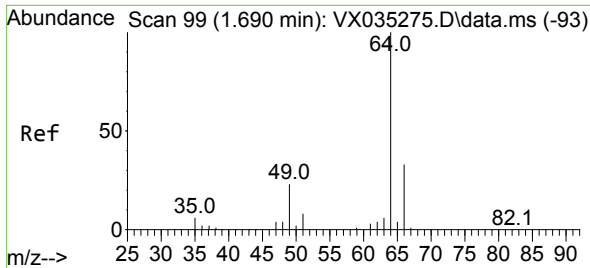
Tgt Ion:168 Resp: 247759  
 Ion Ratio Lower Upper  
 168 100  
 99 54.1 45.7 68.5



#3  
 Chloromethane  
 Concen: 1.772 ug/l  
 RT: 1.252 min Scan# 27  
 Delta R.T. -0.042 min  
 Lab File: VX035454.D  
 Acq: 01 May 2023 20:34

Tgt Ion: 50 Resp: 4226  
 Ion Ratio Lower Upper  
 50 100  
 52 0.0 25.9 38.9

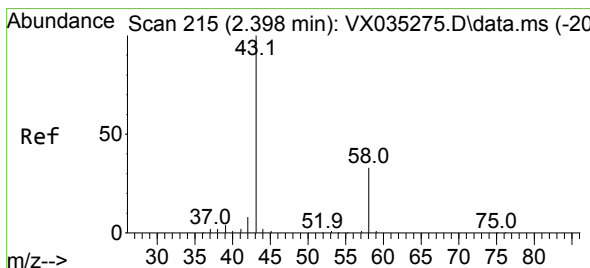
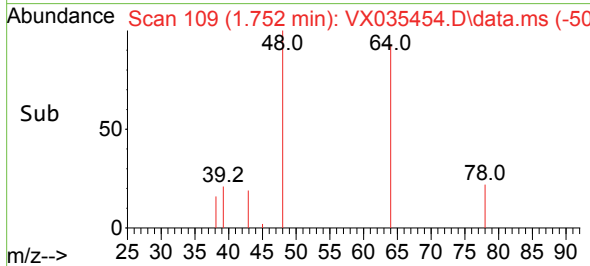
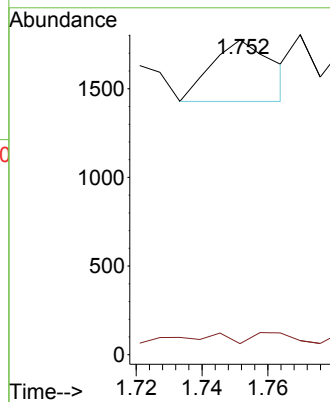
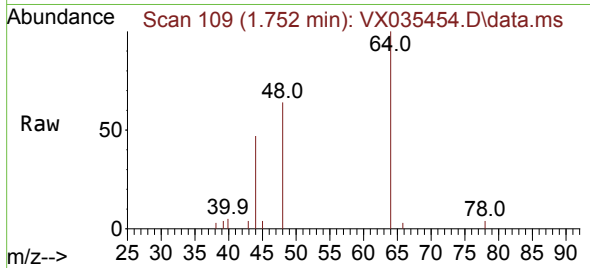




#6  
 Chloroethane  
 Concen: 0.319 ug/l  
 RT: 1.752 min Scan# 109  
 Delta R.T. 0.062 min  
 Lab File: VX035454.D  
 Acq: 01 May 2023 20:34

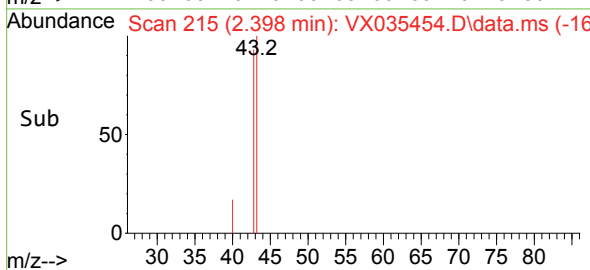
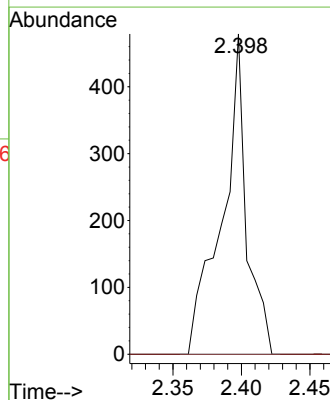
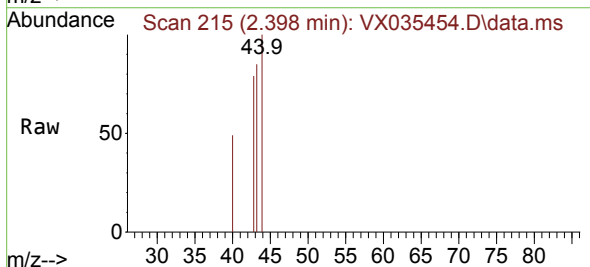
Instrument : MSVOA\_X  
 ClientSampleId : TB-02

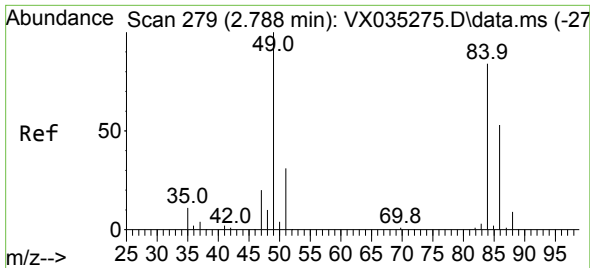
Tgt Ion: 64 Resp: 446  
 Ion Ratio Lower Upper  
 64 100  
 66 0.0 26.2 39.4#



#16  
 Acetone  
 Concen: 0.456 ug/l  
 RT: 2.398 min Scan# 215  
 Delta R.T. -0.000 min  
 Lab File: VX035454.D  
 Acq: 01 May 2023 20:34

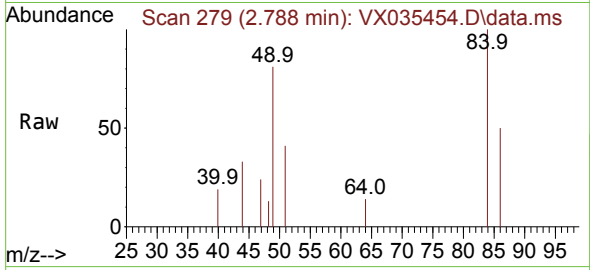
Tgt Ion: 43 Resp: 592  
 Ion Ratio Lower Upper  
 43 100  
 58 0.0 24.7 37.1#





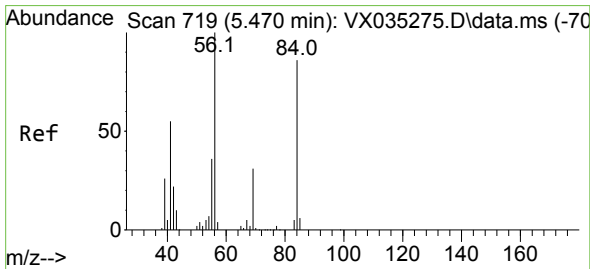
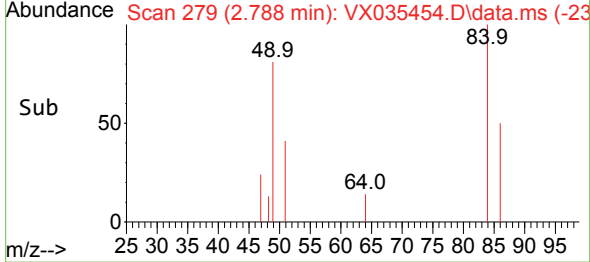
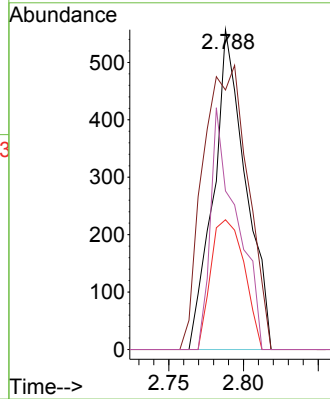
#20  
 Methylene Chloride  
 Concen: 0.280 ug/l  
 RT: 2.788 min Scan# 21  
 Delta R.T. -0.000 min  
 Lab File: VX035454.D  
 Acq: 01 May 2023 20:34

Instrument :  
 MSVOA\_X  
 ClientSampleId :  
 TB-02



Tgt Ion: 84 Resp: 834

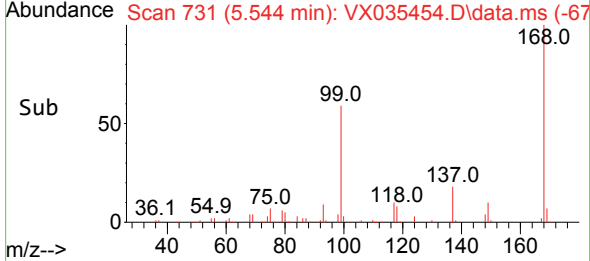
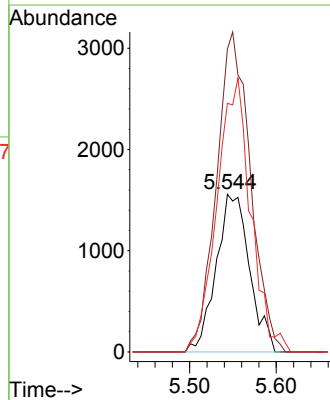
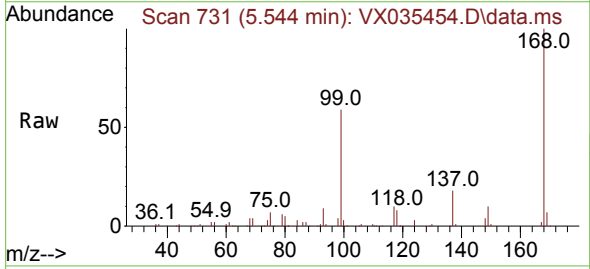
Ion	Ratio	Lower	Upper
84	100		
49	81.1	103.8	155.8#
51	40.6	31.8	47.8
86	49.6	51.4	77.2#

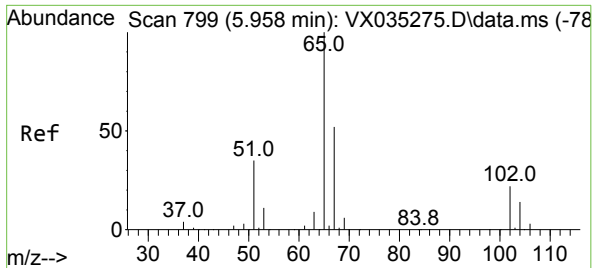


#31  
 Cyclohexane  
 Concen: 0.983 ug/l  
 RT: 5.544 min Scan# 731  
 Delta R.T. 0.074 min  
 Lab File: VX035454.D  
 Acq: 01 May 2023 20:34

Tgt Ion: 56 Resp: 4170

Ion	Ratio	Lower	Upper
56	100		
69	191.9	23.7	35.5#
84	157.6	68.5	102.7#

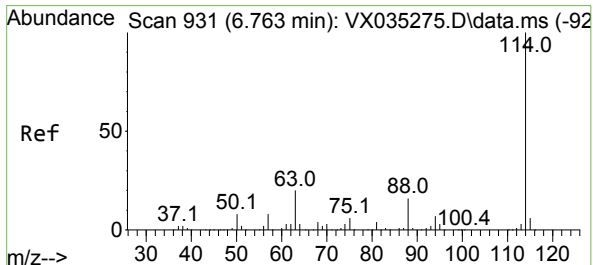
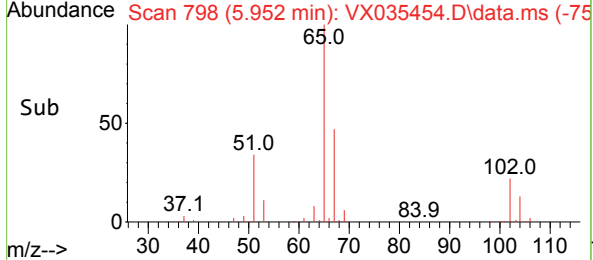
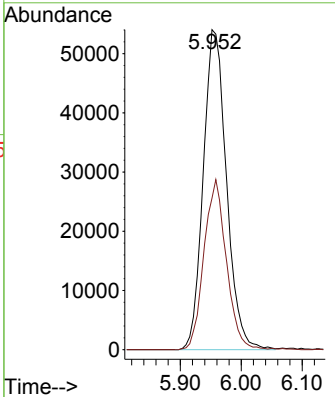
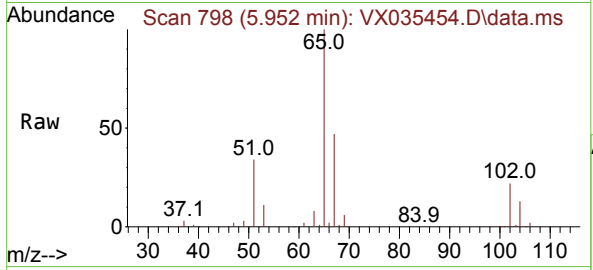




#33  
 1,2-Dichloroethane-d4  
 Concen: 47.960 ug/l  
 RT: 5.952 min Scan# 798  
 Delta R.T. -0.006 min  
 Lab File: VX035454.D  
 Acq: 01 May 2023 20:34

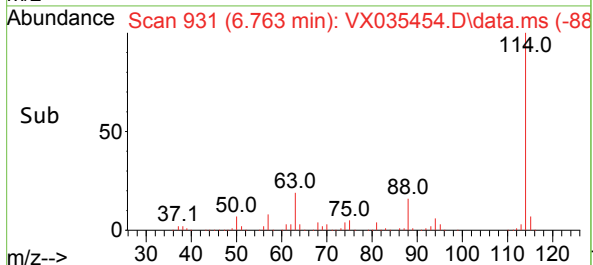
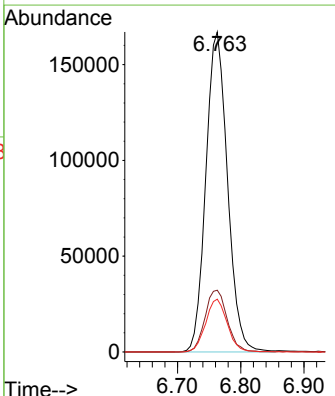
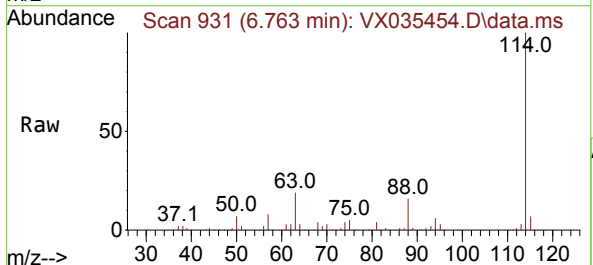
Instrument : MSVOA\_X  
 ClientSampleId : TB-02

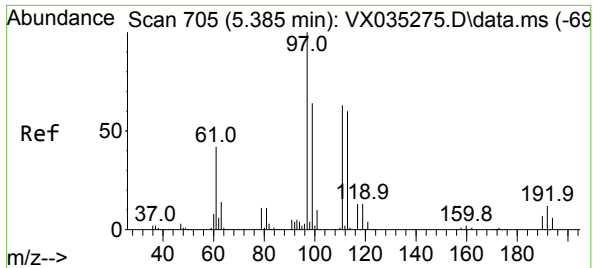
Tgt Ion: 65 Resp: 143357  
 Ion Ratio Lower Upper  
 65 100  
 67 51.1 0.0 104.0



#34  
 1,4-Difluorobenzene  
 Concen: 50.000 ug/l  
 RT: 6.763 min Scan# 931  
 Delta R.T. -0.000 min  
 Lab File: VX035454.D  
 Acq: 01 May 2023 20:34

Tgt Ion: 114 Resp: 396954  
 Ion Ratio Lower Upper  
 114 100  
 63 19.3 0.0 42.2  
 88 16.5 0.0 33.2



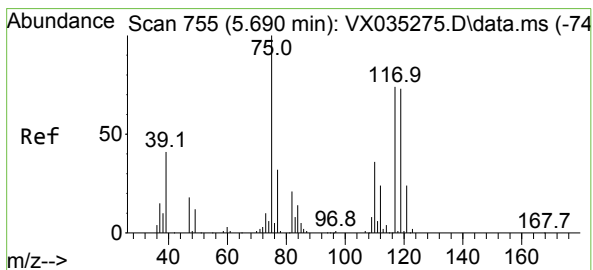
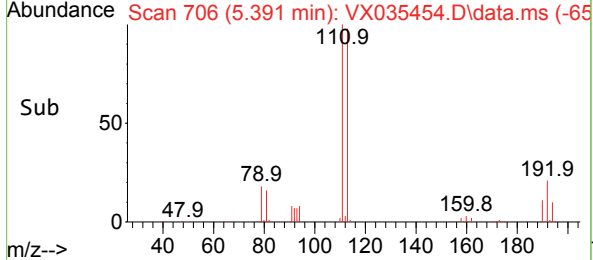
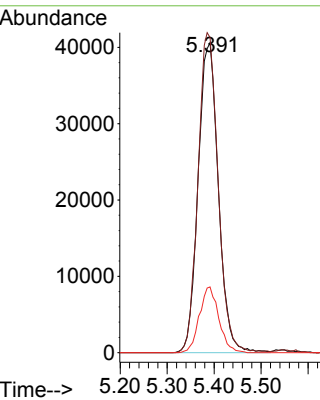
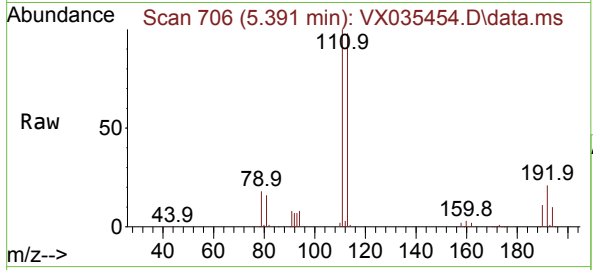


#35  
 Dibromofluoromethane  
 Concen: 49.858 ug/l  
 RT: 5.391 min Scan# 706  
 Delta R.T. 0.006 min  
 Lab File: VX035454.D  
 Acq: 01 May 2023 20:34

Instrument : MSVOA\_X  
 ClientSampleId : TB-02

Tgt Ion:113 Resp: 121473

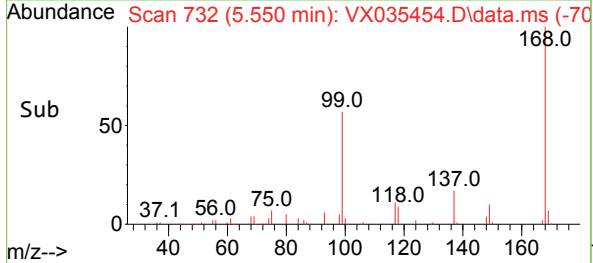
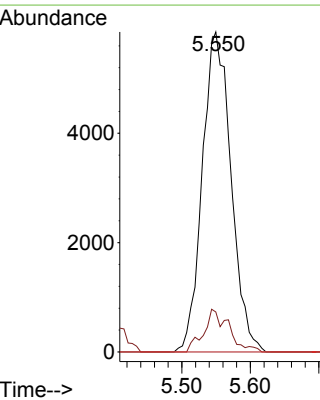
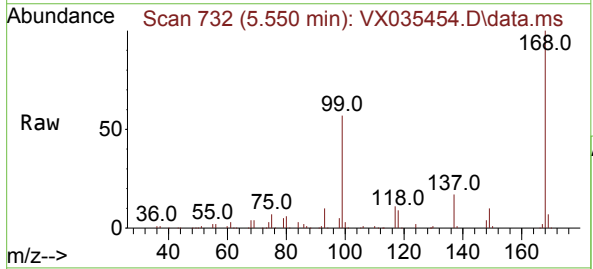
Ion	Ratio	Lower	Upper
113	100		
111	102.3	83.7	125.5
192	20.3	15.4	23.2

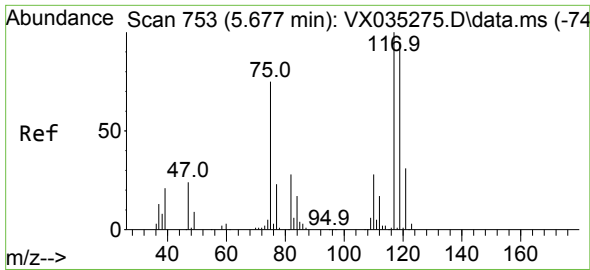


#36  
 1,1-Dichloropropene  
 Concen: 4.473 ug/l  
 RT: 5.550 min Scan# 732  
 Delta R.T. -0.140 min  
 Lab File: VX035454.D  
 Acq: 01 May 2023 20:34

Tgt Ion: 75 Resp: 17016

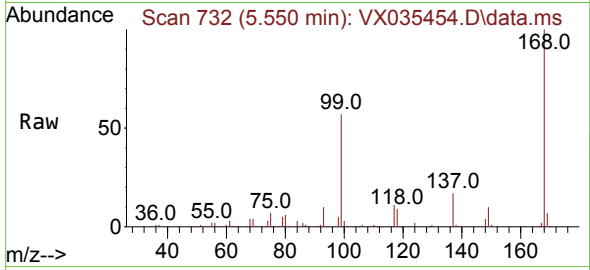
Ion	Ratio	Lower	Upper
75	100		
110	11.7	17.5	52.5#
77	0.0	24.3	36.5#



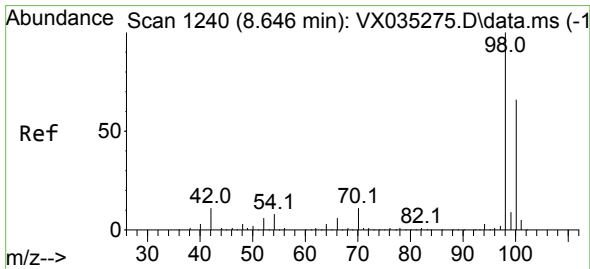
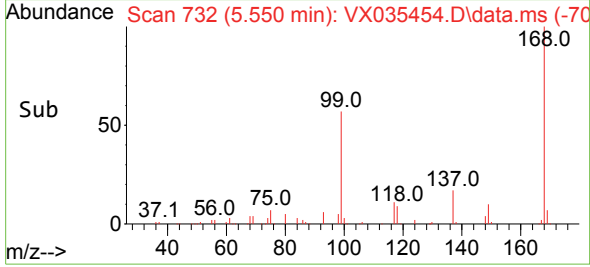
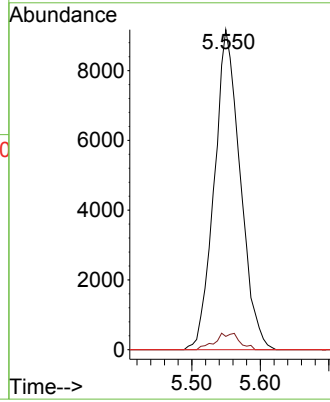


#38  
 Carbon Tetrachloride  
 Concen: 6.669 ug/l  
 RT: 5.550 min Scan# 71  
 Delta R.T. -0.127 min  
 Lab File: VX035454.D  
 Acq: 01 May 2023 20:34

Instrument : MSVOA\_X  
 ClientSampleId : TB-02

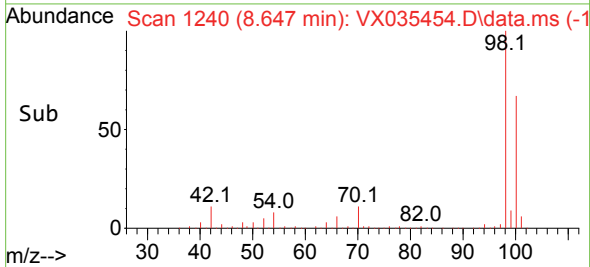
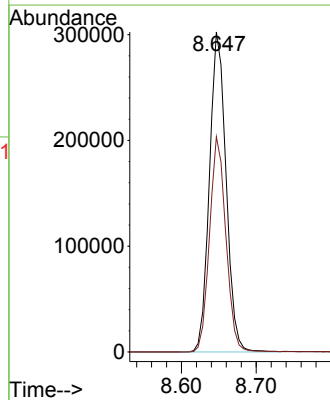
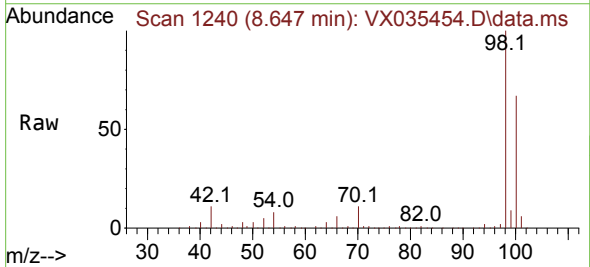


Tgt Ion:117 Resp: 24085  
 Ion Ratio Lower Upper  
 117 100  
 119 4.1 76.6 114.8#  
 121 0.0 23.8 35.6#

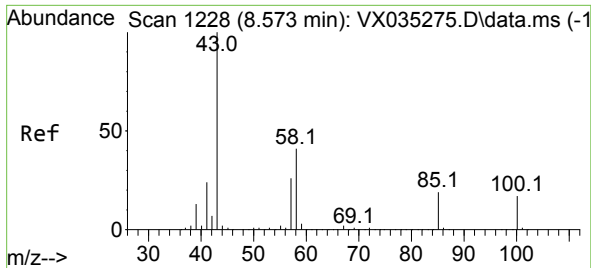


#50  
 Toluene-d8  
 Concen: 50.879 ug/l  
 RT: 8.647 min Scan# 1240  
 Delta R.T. 0.001 min  
 Lab File: VX035454.D  
 Acq: 01 May 2023 20:34

Tgt Ion: 98 Resp: 467623  
 Ion Ratio Lower Upper  
 98 100  
 100 66.1 52.5 78.7



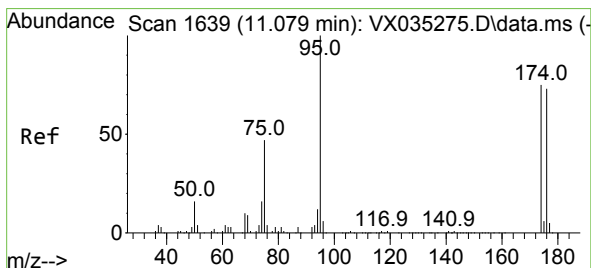
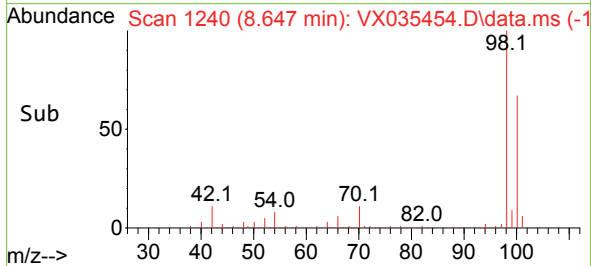
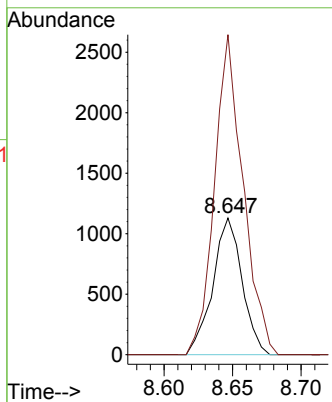
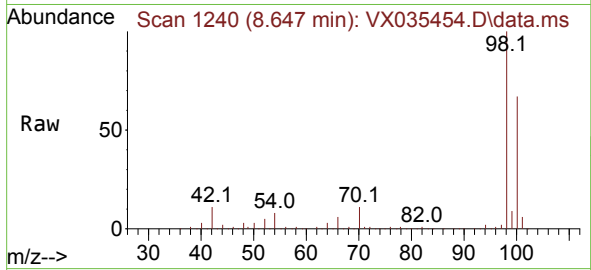




#51  
 4-Methyl-2-Pentanone  
 Concen: 0.469 ug/l  
 RT: 8.647 min Scan# 11  
 Delta R.T. 0.074 min  
 Lab File: VX035454.D  
 Acq: 01 May 2023 20:34

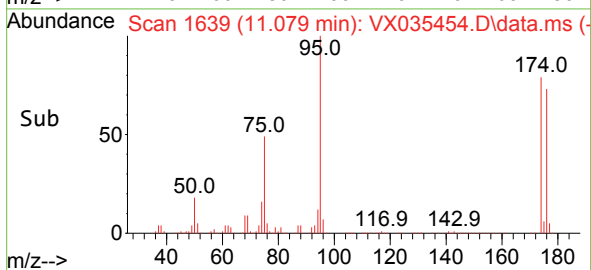
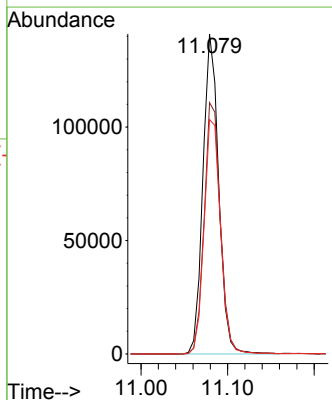
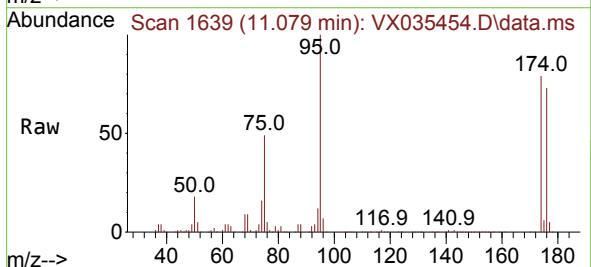
Instrument :  
 MSVOA\_X  
 ClientSampleId :  
 TB-02

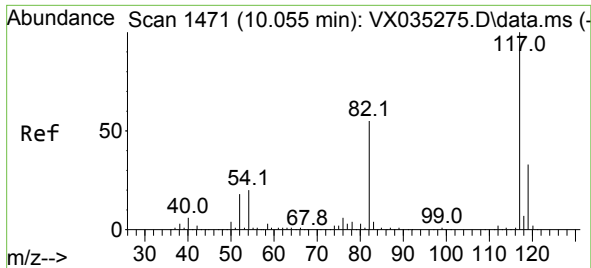
Tgt Ion: 43 Resp: 1681  
 Ion Ratio Lower Upper  
 43 100  
 58 228.7 30.6 46.0#



#62  
 4-Bromofluorobenzene  
 Concen: 51.525 ug/l  
 RT: 11.079 min Scan# 1639  
 Delta R.T. 0.000 min  
 Lab File: VX035454.D  
 Acq: 01 May 2023 20:34

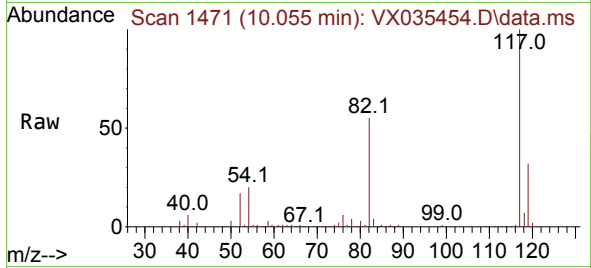
Tgt Ion: 95 Resp: 178146  
 Ion Ratio Lower Upper  
 95 100  
 174 81.4 0.0 147.4  
 176 76.9 0.0 140.6



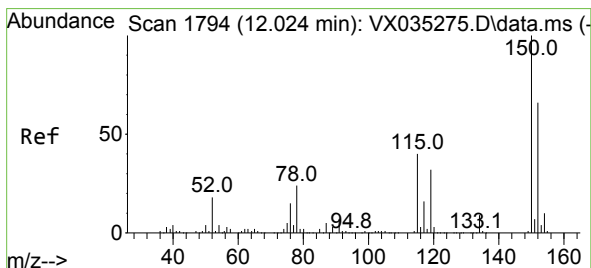
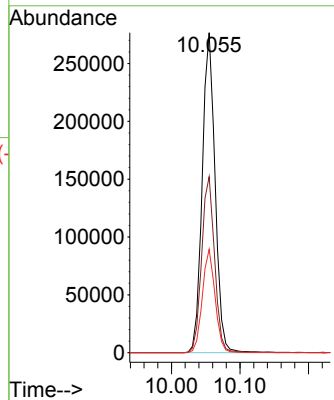
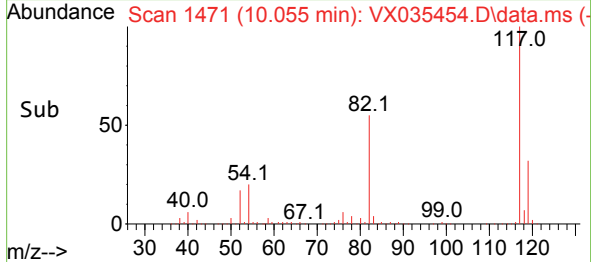


#63  
 Chlorobenzene-d5  
 Concen: 50.000 ug/l  
 RT: 10.055 min Scan# 1471  
 Delta R.T. -0.000 min  
 Lab File: VX035454.D  
 Acq: 01 May 2023 20:34

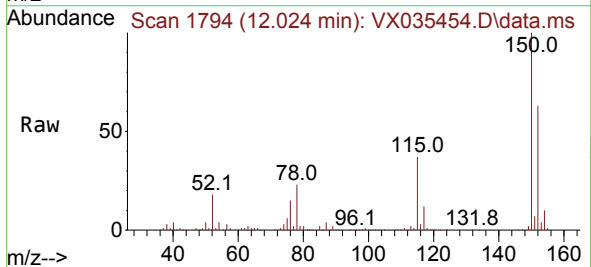
Instrument : MSVOA\_X  
 ClientSampleId : TB-02



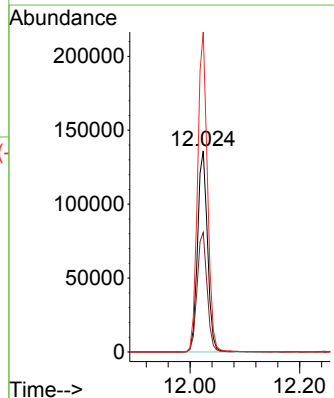
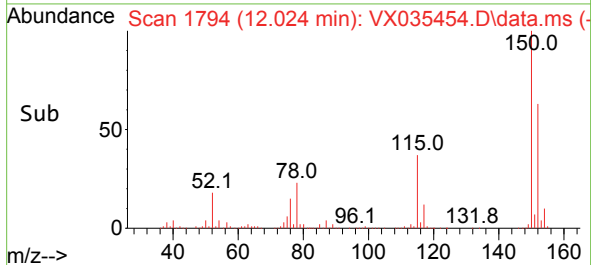
Tgt Ion:117 Resp: 362348  
 Ion Ratio Lower Upper  
 117 100  
 82 55.0 45.0 67.4  
 119 32.3 26.0 39.0

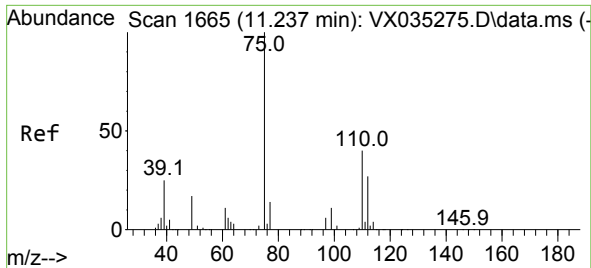


#72  
 1,4-Dichlorobenzene-d4  
 Concen: 50.000 ug/l  
 RT: 12.024 min Scan# 1794  
 Delta R.T. 0.000 min  
 Lab File: VX035454.D  
 Acq: 01 May 2023 20:34



Tgt Ion:152 Resp: 172725  
 Ion Ratio Lower Upper  
 152 100  
 115 59.5 45.0 135.0  
 150 157.9 0.0 352.4

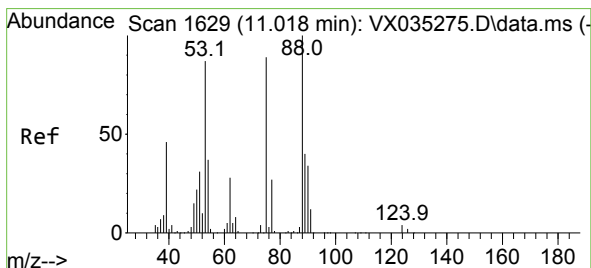
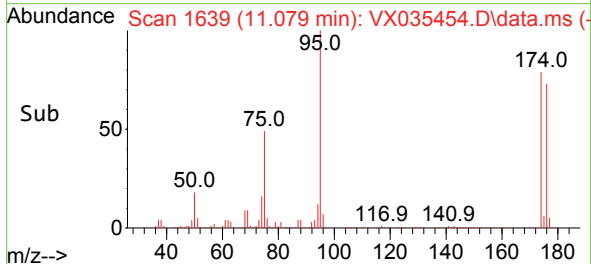
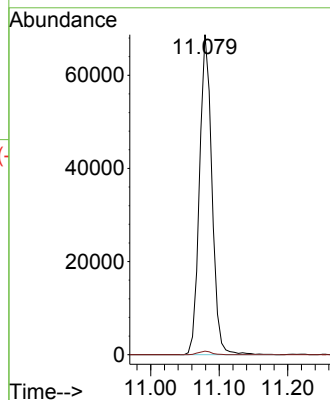
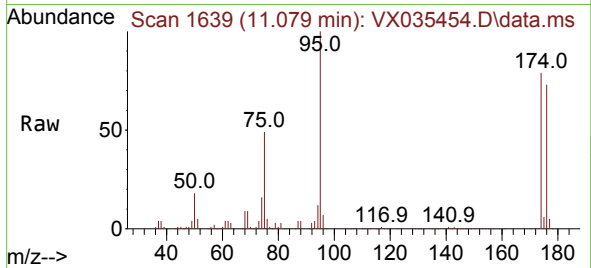




#76  
 1,2,3-Trichloropropane  
 Concen: 25.260 ug/l  
 RT: 11.079 min Scan# 1639  
 Delta R.T. -0.158 min  
 Lab File: VX035454.D  
 Acq: 01 May 2023 20:34

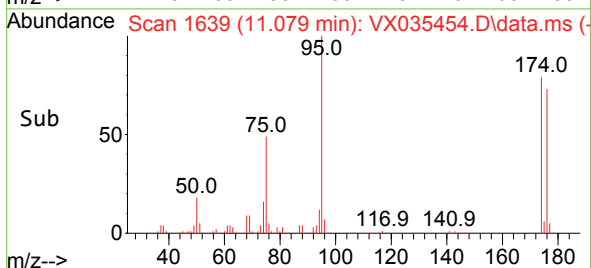
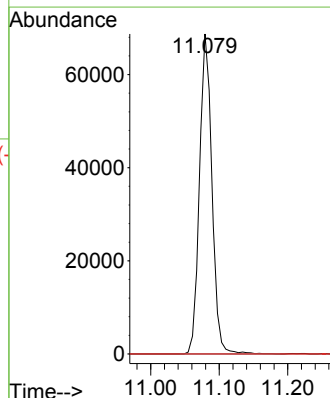
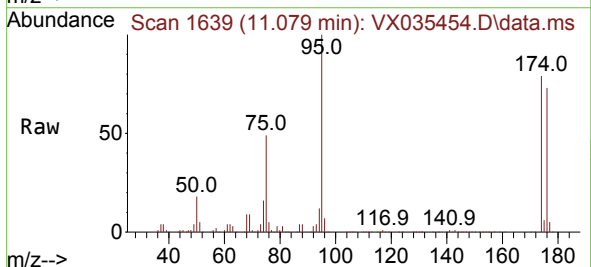
Instrument : MSVOA\_X  
 ClientSampleId : TB-02

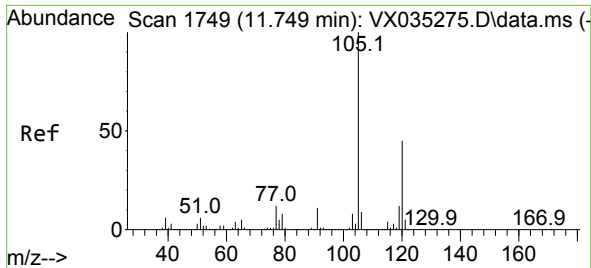
Tgt Ion: 75 Resp: 87032  
 Ion Ratio Lower Upper  
 75 100  
 77 1.2 21.6 64.8#



#81  
 trans-1,4-Dichloro-2-butene  
 Concen: 81.812 ug/l  
 RT: 11.079 min Scan# 1639  
 Delta R.T. 0.061 min  
 Lab File: VX035454.D  
 Acq: 01 May 2023 20:34

Tgt Ion: 75 Resp: 87032  
 Ion Ratio Lower Upper  
 75 100  
 53 0.0 82.6 124.0#  
 89 0.0 36.9 55.3#

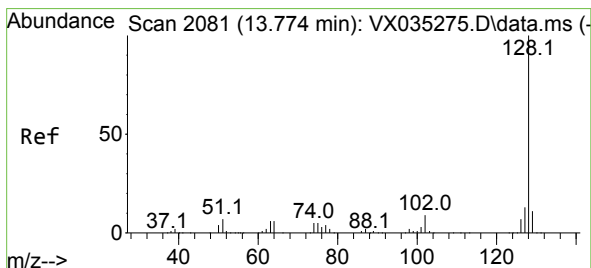
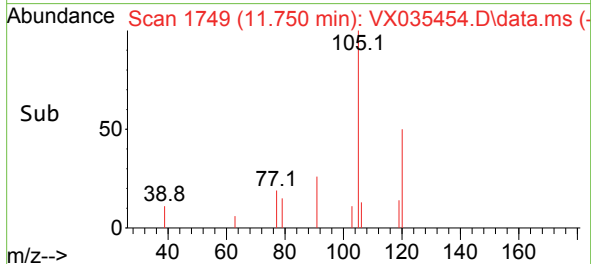
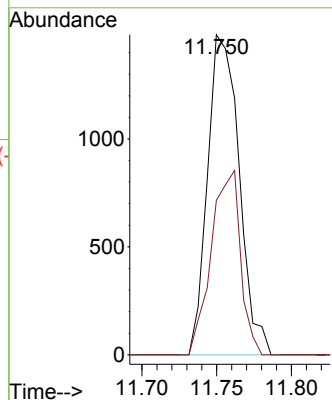
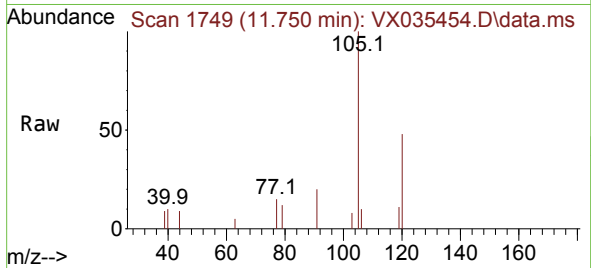




#84  
 1,2,4-Trimethylbenzene  
 Concen: 0.204 ug/l  
 RT: 11.750 min Scan# 11  
 Delta R.T. 0.001 min  
 Lab File: VX035454.D  
 Acq: 01 May 2023 20:34

Instrument :  
 MSVOA\_X  
 ClientSampleId :  
 TB-02

Tgt Ion:105 Resp: 2179  
 Ion Ratio Lower Upper  
 105 100  
 120 53.1 22.4 67.0



#95  
 Naphthalene  
 Concen: 1.055 ug/l  
 RT: 13.780 min Scan# 2082  
 Delta R.T. 0.006 min  
 Lab File: VX035454.D  
 Acq: 01 May 2023 20:34

Tgt Ion:128 Resp: 12175  
 Ion Ratio Lower Upper  
 128 100  
 127 12.7 10.2 15.4  
 129 10.6 8.6 13.0

