

Data Path : Z:\VOASRV\HPCHEM1\MSVOA X\DATA\VX050219\
 Data File : VX009292.D
 Acq On : 02 May 2019 22:43
 Operator : JC/SP
 Sample : K2660-04DL 4X
 Misc : 5.0mL/MSVOA X/WATER
 ALS Vial : 29 Sample Multiplier: 1

Instrument :
 MSVOA_X
 ClientSampleID :
 SS036MW004-190429DL

Quant Time: May 03 02:47:08 2019
 Quant Method : Z:\VOASRV\HPCHEM1\MSVOA_X\METHOD\82X042919W.M
 Quant Title : SW846 8260
 QLast Update : Tue Apr 30 07:03:50 2019
 Response via : Initial Calibration

Internal Standards	R.T.	QIon	Response	Conc	Units	Dev(Min)
1) Pentafluorobenzene	5.67	168	195543	50.00	ug/l	0.00
34) 1,4-Difluorobenzene	6.86	114	317257	50.00	ug/l	0.00
63) Chlorobenzene-d5	10.11	117	278104	50.00	ug/l	0.00
72) 1,4-Dichlorobenzene-d4	12.08	152	121058	50.00	ug/l	0.00

System Monitoring Compounds

33) 1,2-Dichloroethane-d4	6.07	65	130140	48.75	ug/l	0.00
Spiked Amount	50.000		Recovery	=	97.50%	
35) Dibromofluoromethane	5.50	113	96390	48.33	ug/l	0.00
Spiked Amount	50.000		Recovery	=	96.66%	
50) Toluene-d8	8.71	98	397516	49.37	ug/l	0.00
Spiked Amount	50.000		Recovery	=	98.74%	
62) 4-Bromofluorobenzene	11.13	95	132629	45.33	ug/l	0.00
Spiked Amount	50.000		Recovery	=	90.66%	

Target Compounds

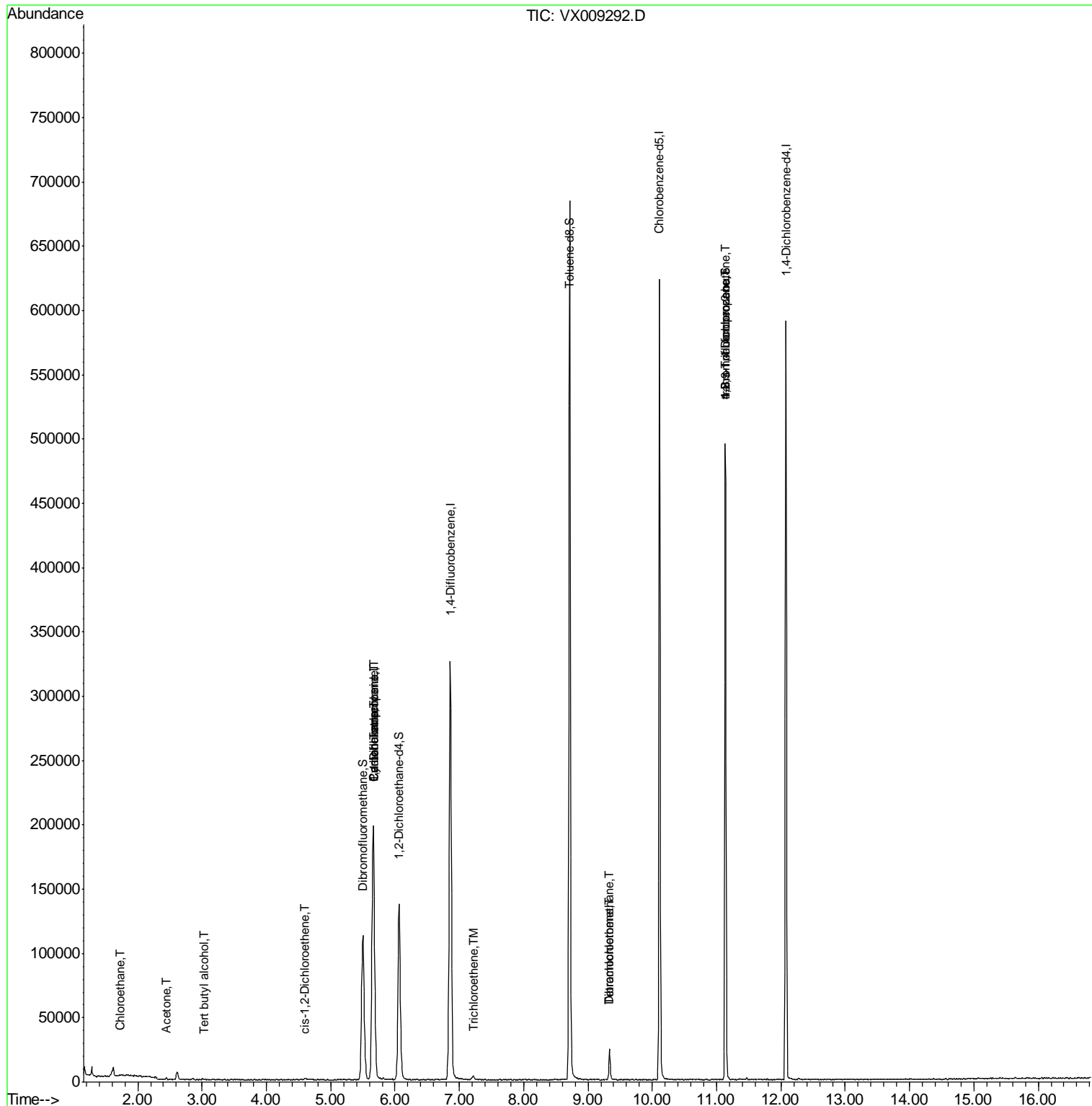
					Qvalue	
6) Chloroethane	1.73	64	757	0.491	ug/l #	73
11) Tert butyl alcohol	3.03	59	236	0.382	ug/l #	44
16) Acetone	2.45	43	1486	1.037	ug/l	95
27) cis-1,2-Dichloroethene	4.60	96	518	0.218	ug/l	60
28) Bromochloromethane	5.03	49	20	Below Cal	#	20
31) Cyclohexane	5.66	56	4253	1.078	ug/l #	1
36) 1,1-Dichloropropene	5.66	75	15125	5.130	ug/l #	51
38) Carbon Tetrachloride	5.66	117	18204	6.796	ug/l #	15
44) Trichloroethene	7.21	130	1263	0.573	ug/l	98
60) Dibromochloromethane	9.34	129	4376	1.980	ug/l #	11
64) Tetrachloroethene	9.34	164	4534	2.377	ug/l	96
76) 1,2,3-Trichloropropane	11.13	75	67439	24.016	ug/l #	34
81) trans-1,4-Dichloro-2-buten	11.13	75	67439	61.448	ug/l #	10

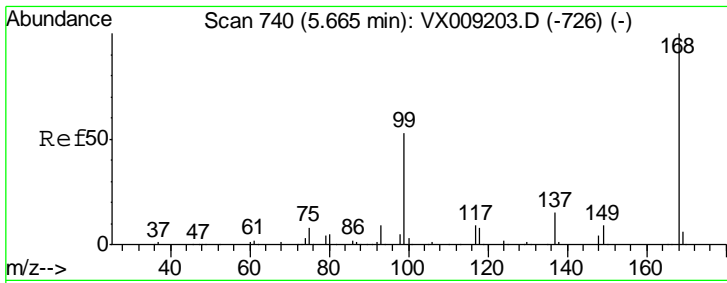
(#) = qualifier out of range (m) = manual integration (+) = signals summed

Data Path : Z:\VOASRV\HPCHEM1\MSVOA X\DATA\VX050219\
 Data File : VX009292.D
 Acq On : 02 May 2019 22:43
 Operator : JC/SP
 Sample : K2660-04DL 4X
 Misc : 5.0mL/MSVOA X/WATER
 ALS Vial : 29 Sample Multiplier: 1

Instrument :
 MSVOA_X
 Client Sampled :
 SS036MW004-190429DL

Quant Time: May 03 02:47:08 2019
 Quant Method : Z:\VOASRV\HPCHEM1\MSVOA_X\METHOD\82X042919W.M
 Quant Title : SW846 8260
 QLast Update : Tue Apr 30 07:03:50 2019
 Response via : Initial Calibration

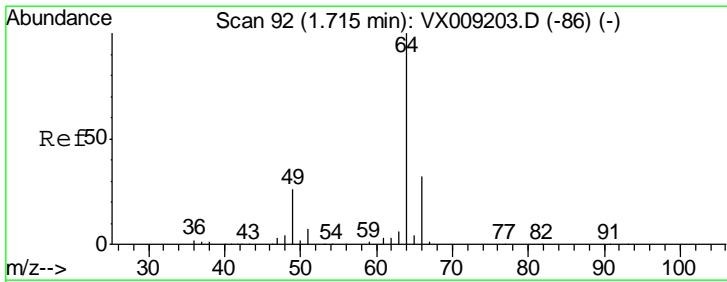
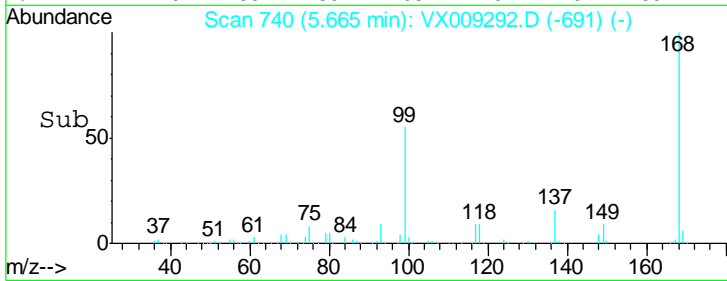
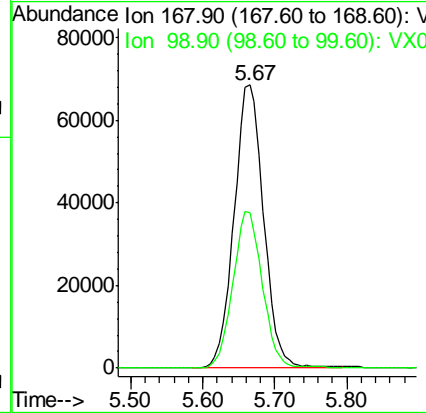
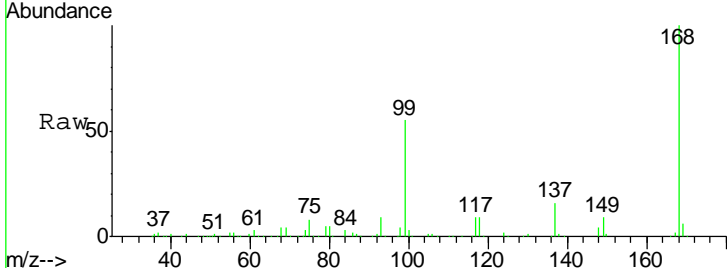




#1
 Pentafluorobenzene
 Concen: 50.000 ug/l
 RT: 5.67 min Scan# 740
 Delta R.T. 0.00 min
 Lab File: VX009292.D
 Acq: 02 May 2019 22:43

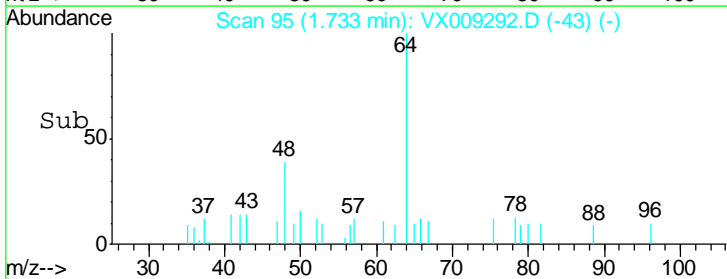
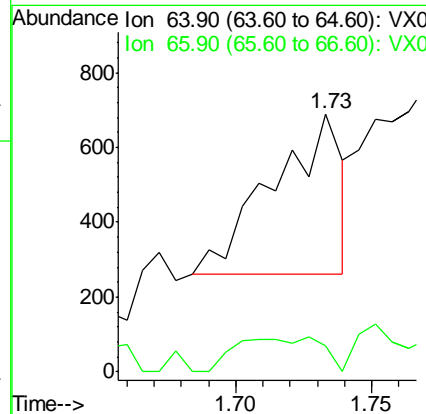
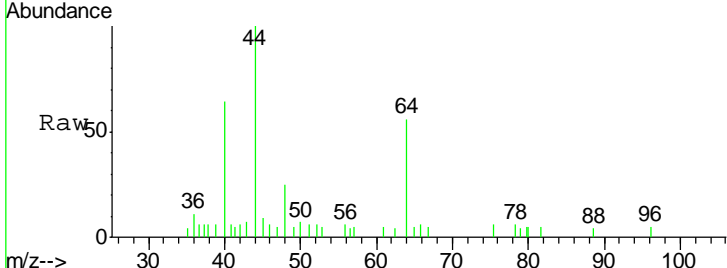
Instrument : MSVOA_X
 ClientSampleID : SS036MW004-190429DL

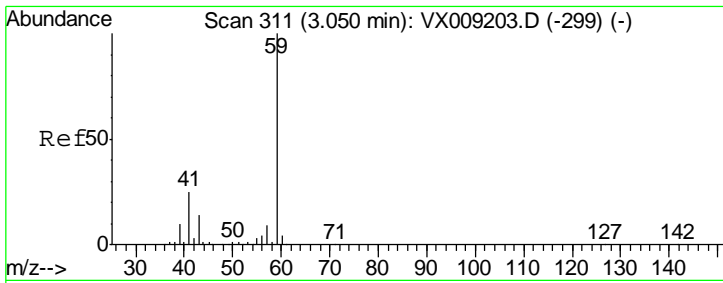
Tgt Ion	Resp	Lower	Upper
168	100		
99	54.9	42.3	63.5



#6
 Chloroethane
 Concen: 0.491 ug/l
 RT: 1.73 min Scan# 95
 Delta R.T. 0.02 min
 Lab File: VX009292.D
 Acq: 02 May 2019 22:43

Tgt Ion	Resp	Lower	Upper
64	100		
66	16.6	25.3	37.9#

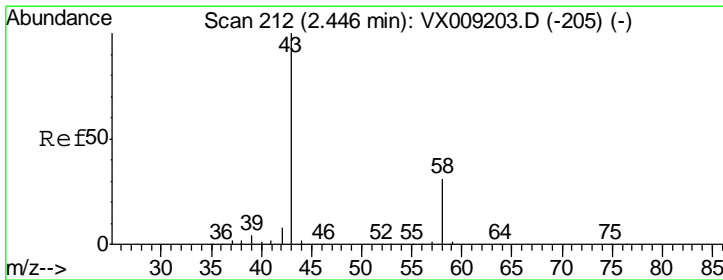
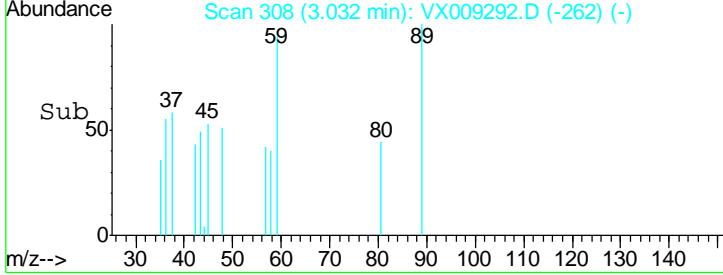
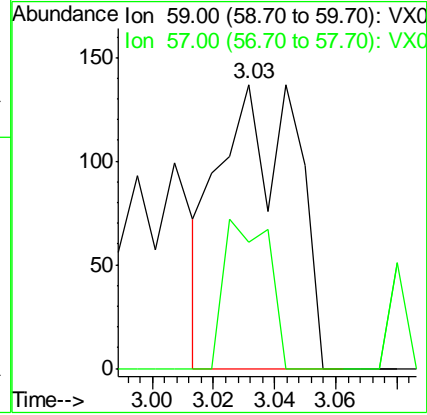
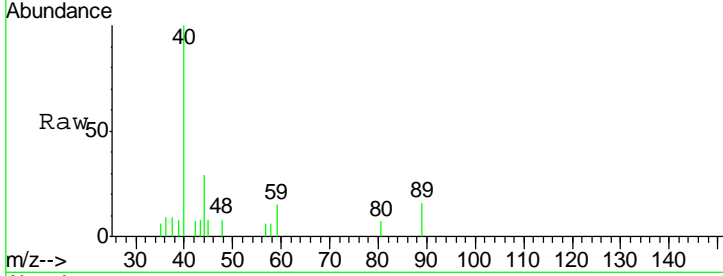




#11
 Tert butyl alcohol
 Concen: 0.382 ug/l
 RT: 3.03 min Scan# 308
 Delta R.T. -0.02 min
 Lab File: VX009292.D
 Acq: 02 May 2019 22:43

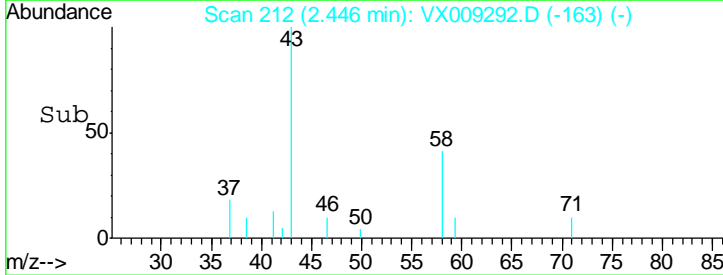
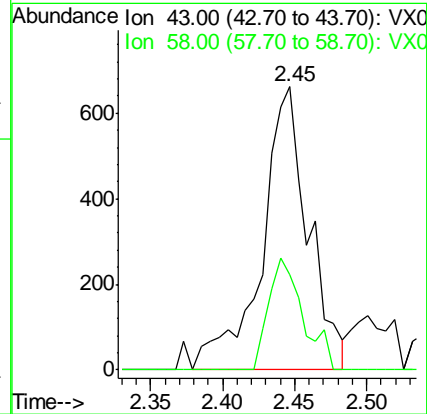
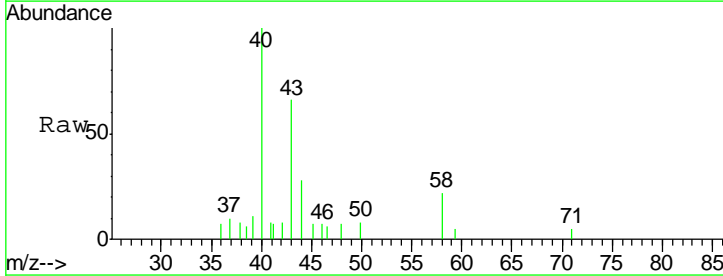
Instrument :
 MSVOA_X
 ClientSampled :
 SS036MW004-190429DL

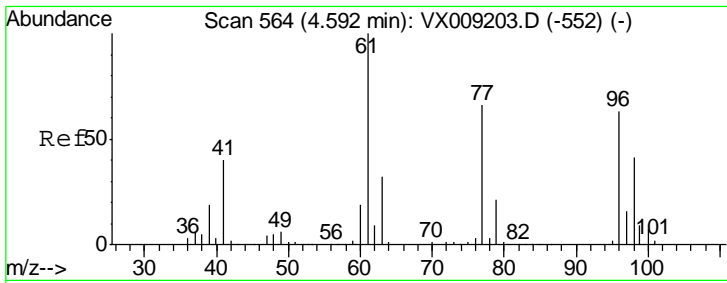
Tgt Ion: 59 Resp: 236
 Ion Ratio Lower Upper
 59 100
 57 30.9 8.2 12.2#



#16
 Acetone
 Concen: 1.037 ug/l
 RT: 2.45 min Scan# 212
 Delta R.T. 0.00 min
 Lab File: VX009292.D
 Acq: 02 May 2019 22:43

Tgt Ion: 43 Resp: 1486
 Ion Ratio Lower Upper
 43 100
 58 33.7 24.9 37.3

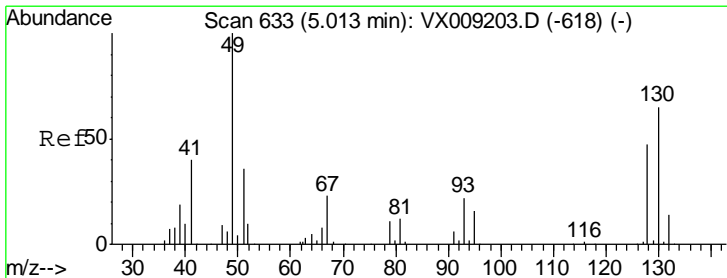
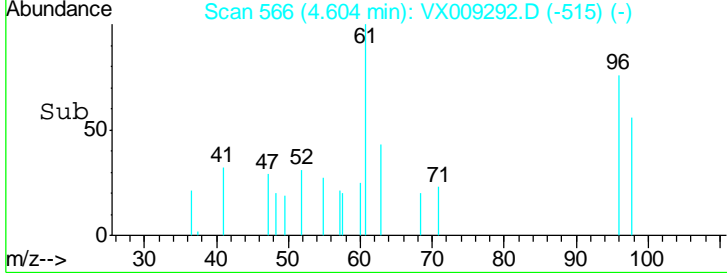
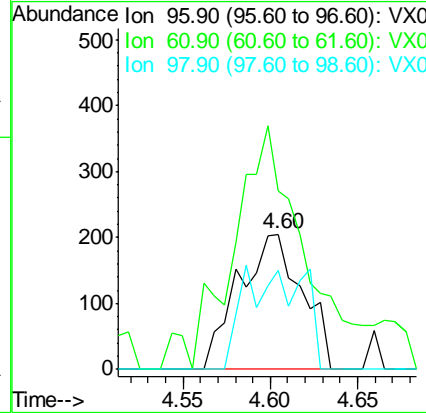
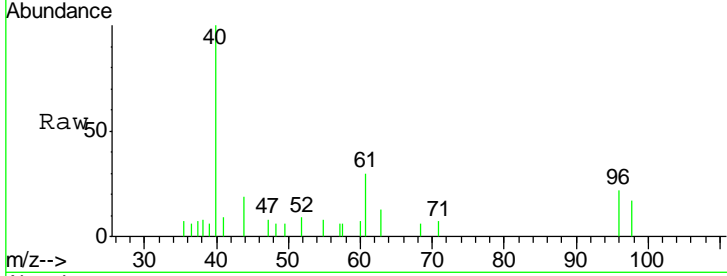




#27
 cis-1,2-Dichloroethene
 Concen: 0.218 ug/l
 RT: 4.60 min Scan# 566
 Delta R.T. 0.01 min
 Lab File: VX009292.D
 Acq: 02 May 2019 22:43

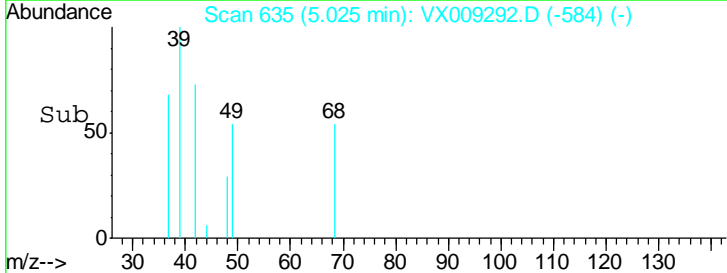
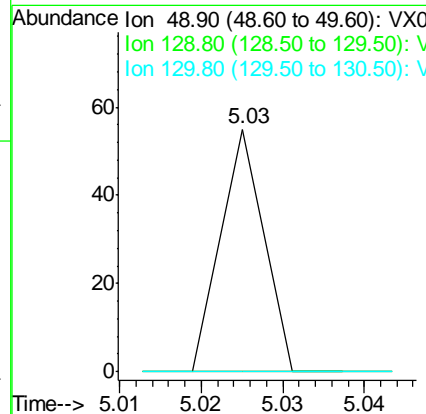
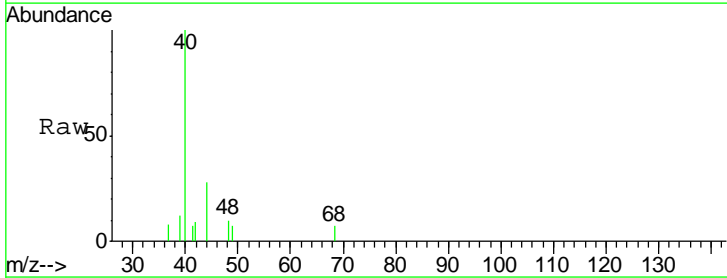
Instrument :
 MSVOA_X
ClientSampled :
 SS036MW004-190429DL

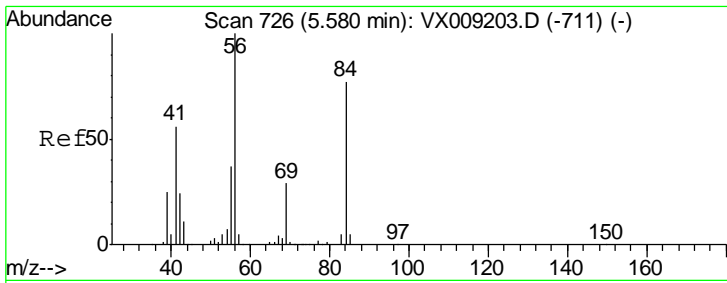
Tgt Ion	Resp	Lower	Upper
96	100		
61	209.3	0.0	324.0
98	23.7	0.0	130.4



#28
 Bromochloromethane
 Concen: Below Cal
 RT: 5.03 min Scan# 635
 Delta R.T. 0.01 min
 Lab File: VX009292.D
 Acq: 02 May 2019 22:43

Tgt Ion	Resp	Lower	Upper
49	100		
129	0.0	0.0	3.8
130	0.0	51.2	76.8#

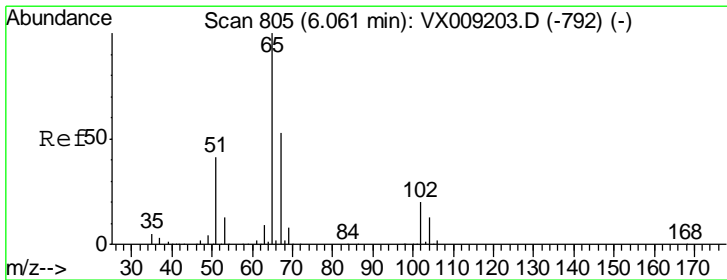
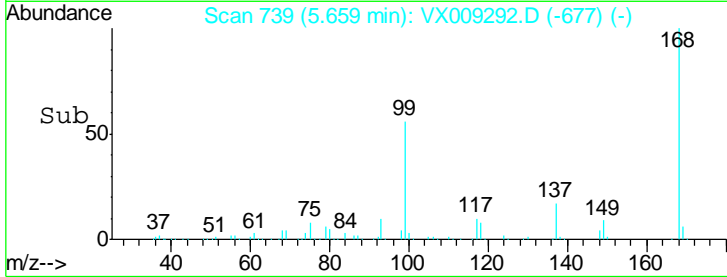
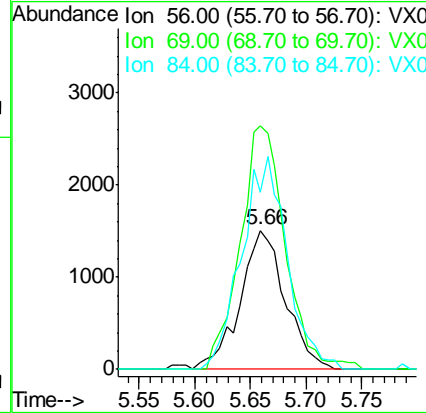
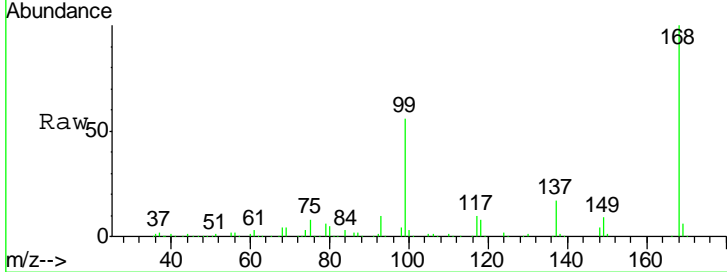




#31
 Cyclohexane
 Concen: 1.078 ug/l
 RT: 5.66 min Scan# 739
 Delta R.T. 0.08 min
 Lab File: VX009292.D
 Acq: 02 May 2019 22:43

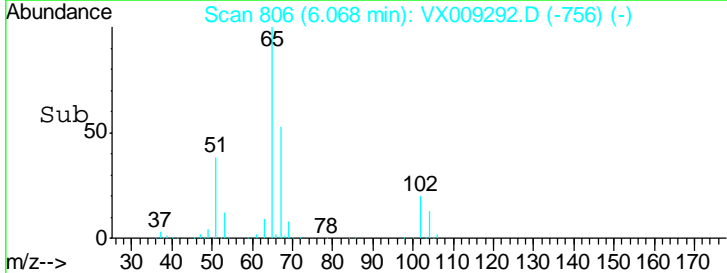
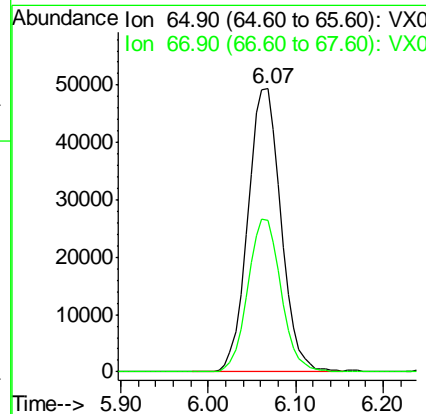
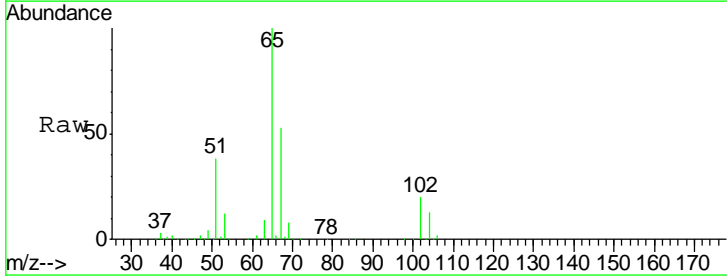
Instrument : MSVOA_X
 ClientSampleID : SS036MW004-190429DL

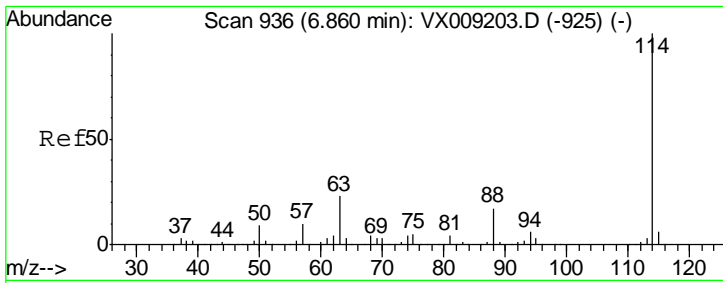
Tgt Ion	Resp	Lower	Upper
56	4253		
69	175.3	23.4	35.0#
84	127.9	61.9	92.9#



#33
 1,2-Dichloroethane-d4
 Concen: 48.753 ug/l
 RT: 6.07 min Scan# 806
 Delta R.T. 0.01 min
 Lab File: VX009292.D
 Acq: 02 May 2019 22:43

Tgt Ion	Resp	Lower	Upper
65	130140		
67	54.2	0.0	106.6

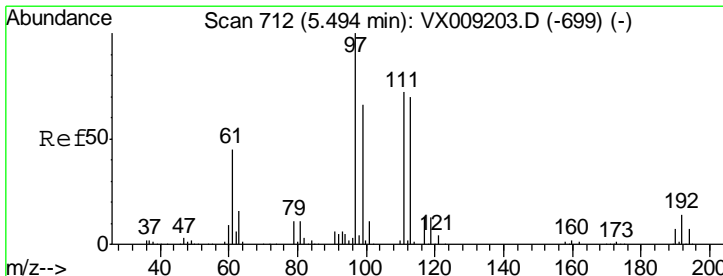
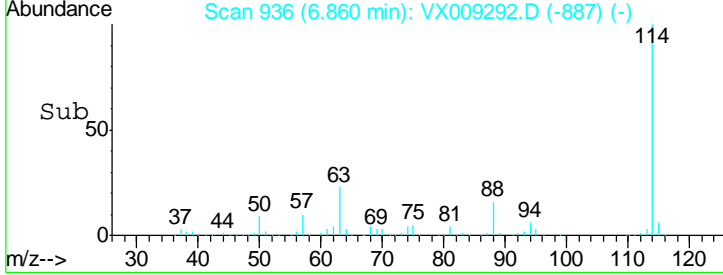
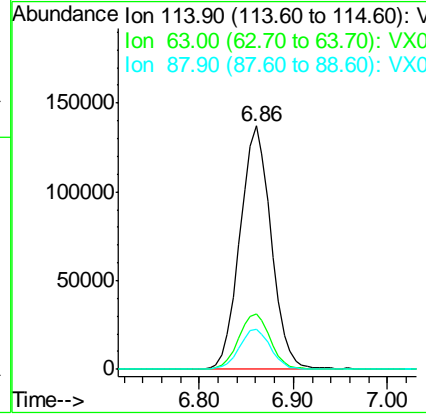
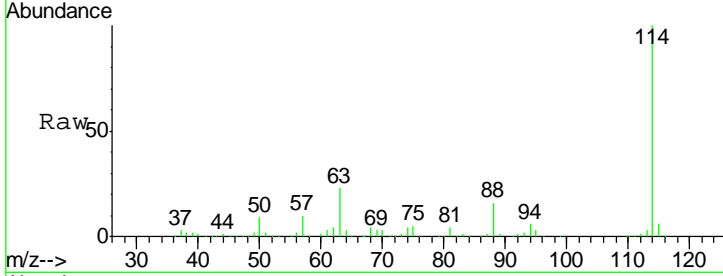




#34
 1,4-Difluorobenzene
 Concen: 50.000 ug/l
 RT: 6.86 min Scan# 936
 Delta R.T. 0.00 min
 Lab File: VX009292.D
 Acq: 02 May 2019 22:43

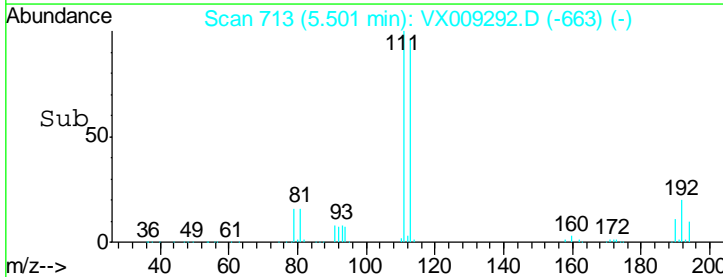
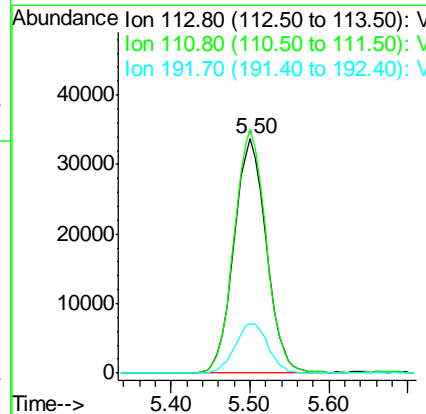
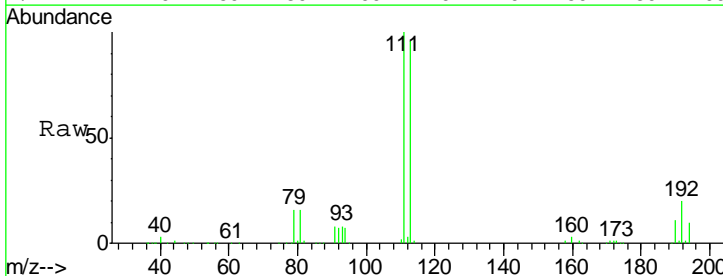
Instrument :
 MSVOA_X
ClientSampled :
 SS036MW004-190429DL

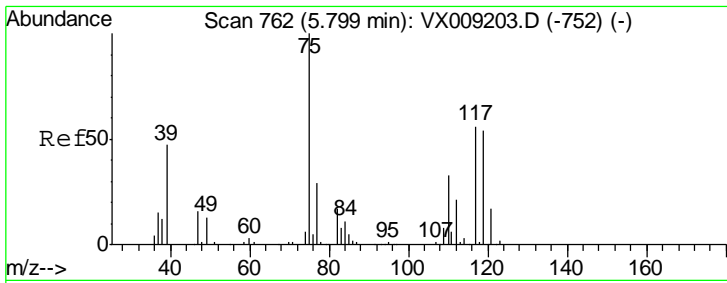
Tgt Ion	Resp	Lower	Upper
114	317257		
63	22.8	0.0	45.6
88	16.3	0.0	33.2



#35
 Dibromofluoromethane
 Concen: 48.330 ug/l
 RT: 5.50 min Scan# 713
 Delta R.T. 0.01 min
 Lab File: VX009292.D
 Acq: 02 May 2019 22:43

Tgt Ion	Resp	Lower	Upper
113	96390		
111	102.8	82.8	124.2
192	21.5	17.0	25.6

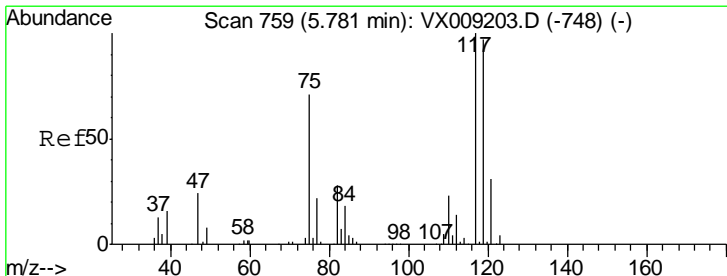
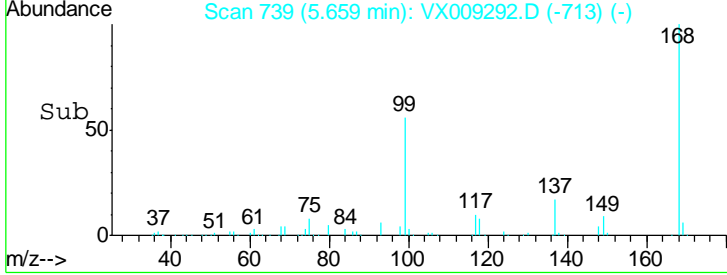
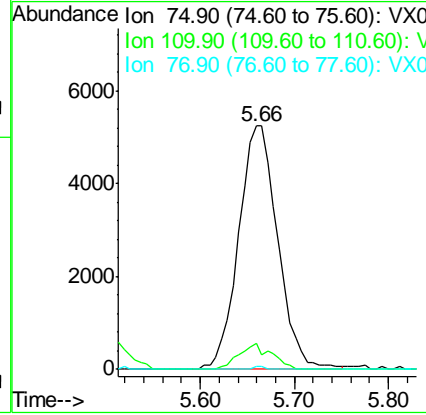
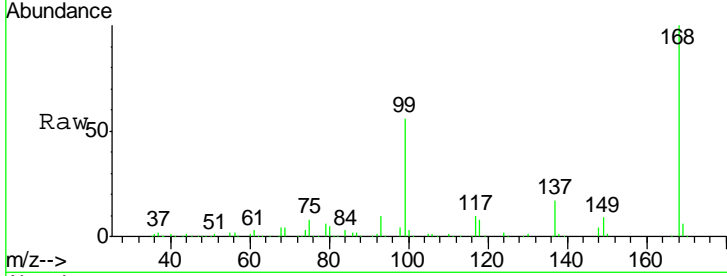




#36
 1,1-Dichloropropene
 Concen: 5.130 ug/l
 RT: 5.66 min Scan# 739
 Delta R.T. -0.14 min
 Lab File: VX009292.D
 Acq: 02 May 2019 22:43

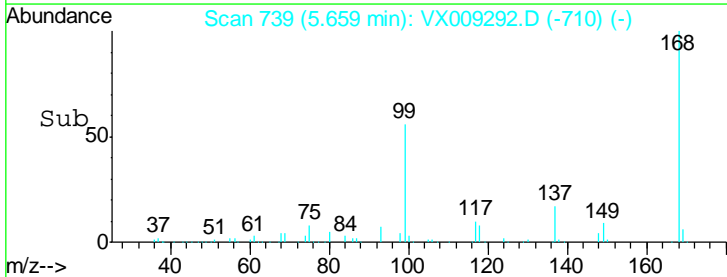
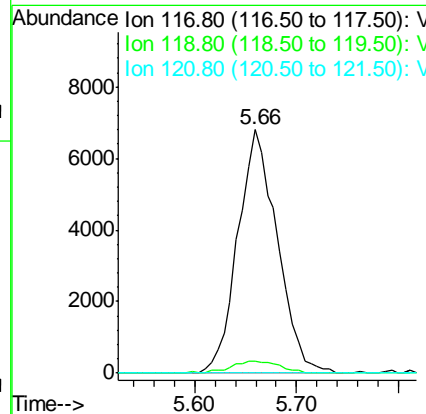
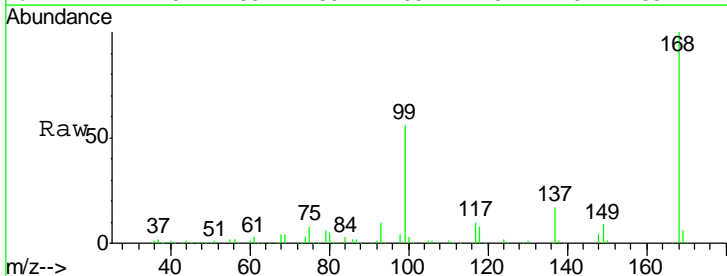
Instrument :
 MSVOA_X
ClientSampled :
 SS036MW004-190429DL

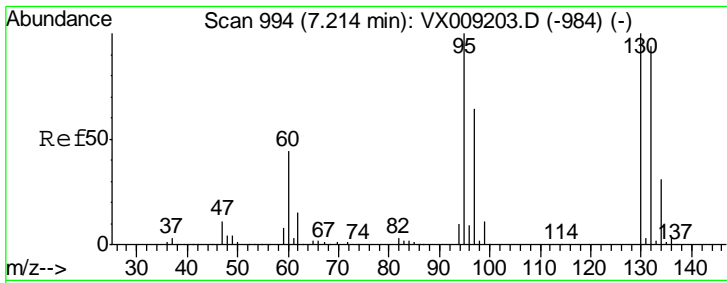
Tgt Ion	Resp	Lower	Upper
75	15125		
110	8.9	16.9	50.6#
77	0.3	24.8	37.2#



#38
 Carbon Tetrachloride
 Concen: 6.796 ug/l
 RT: 5.66 min Scan# 739
 Delta R.T. -0.12 min
 Lab File: VX009292.D
 Acq: 02 May 2019 22:43

Tgt Ion	Resp	Lower	Upper
117	18204		
119	4.7	77.5	116.3#
121	0.0	24.7	37.1#

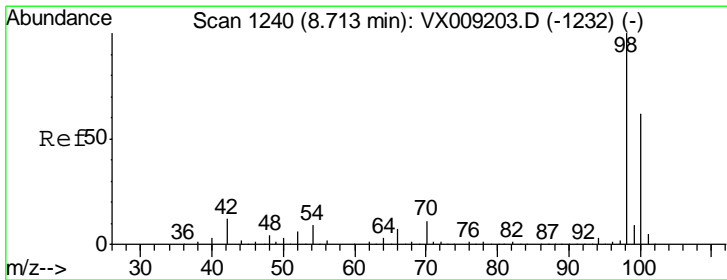
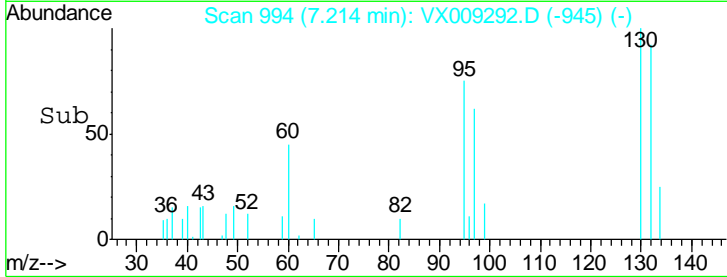
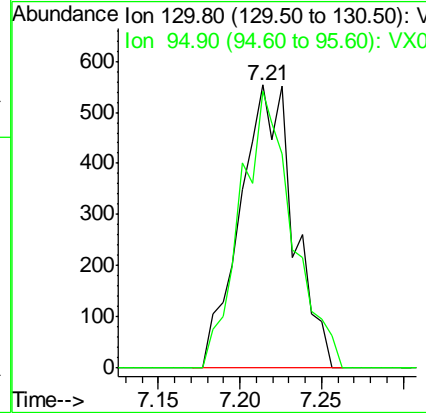
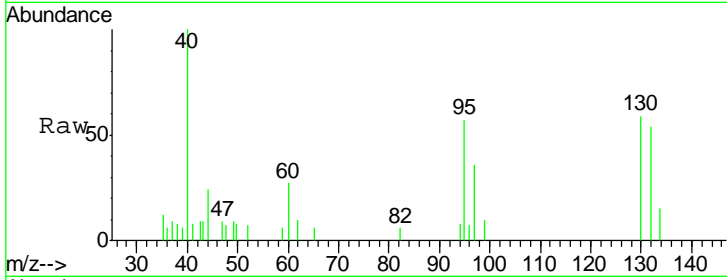




#44
 Trichloroethene
 Concen: 0.573 ug/l
 RT: 7.21 min Scan# 994
 Delta R.T. 0.00 min
 Lab File: VX009292.D
 Acq: 02 May 2019 22:43

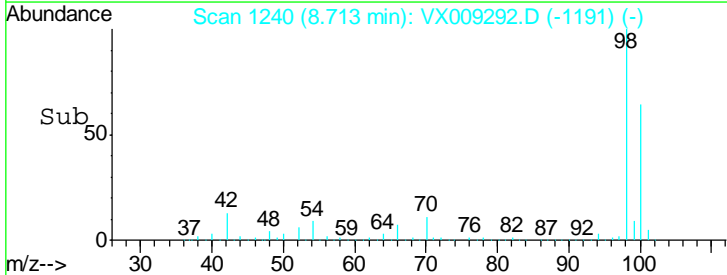
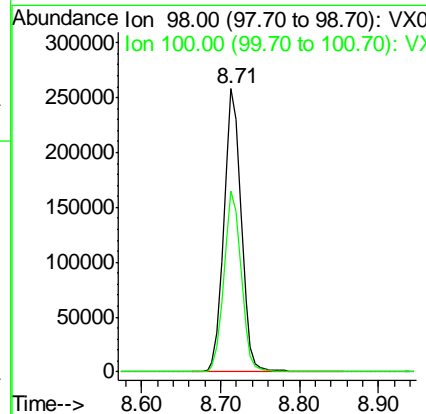
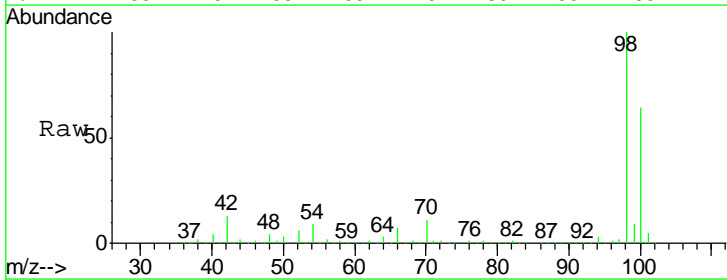
Instrument :
 MSVOA_X
ClientSampled :
 SS036MW004-190429DL

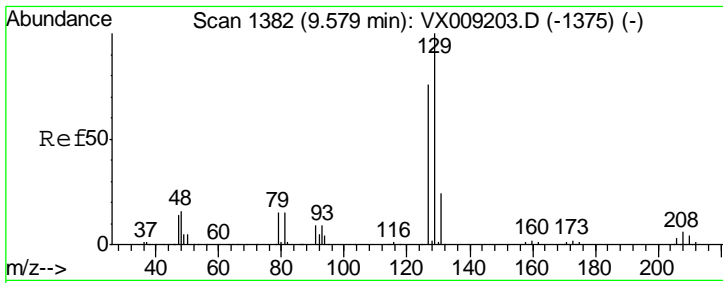
Tgt Ion: 130 Resp: 1263
 Ion Ratio Lower Upper
 130 100
 95 97.8 0.0 199.2



#50
 Toluene-d8
 Concen: 49.369 ug/l
 RT: 8.71 min Scan# 1240
 Delta R.T. 0.00 min
 Lab File: VX009292.D
 Acq: 02 May 2019 22:43

Tgt Ion: 98 Resp: 397516
 Ion Ratio Lower Upper
 98 100
 100 63.8 51.2 76.8

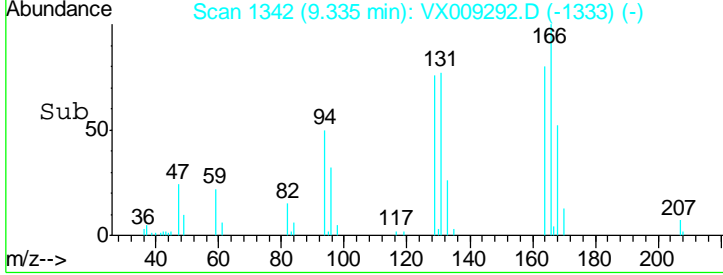
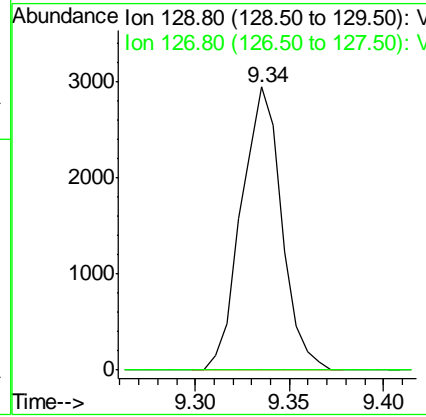
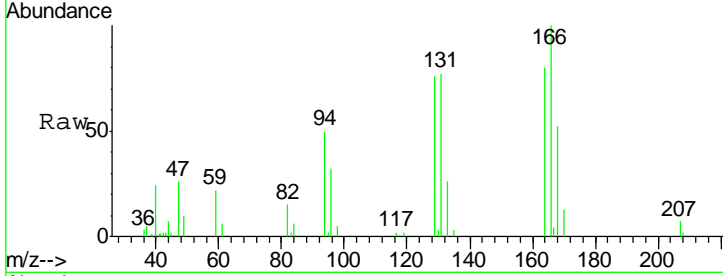




#60
 Dibromochloromethane
 Concen: 1.980 ug/l
 RT: 9.34 min Scan# 1342
 Delta R.T. -0.24 min
 Lab File: VX009292.D
 Acq: 02 May 2019 22:43

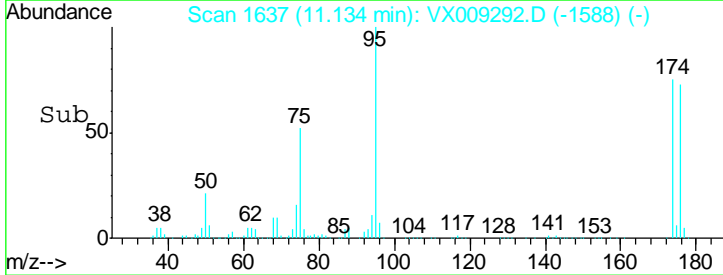
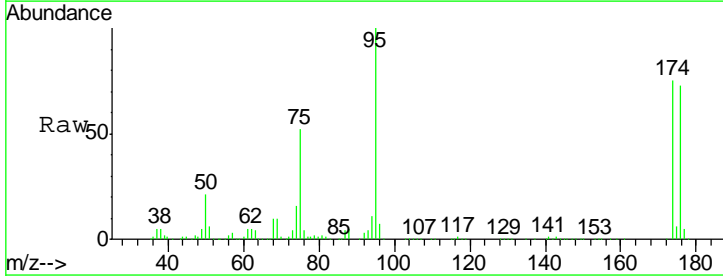
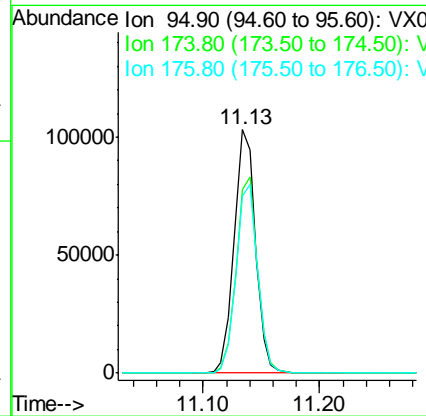
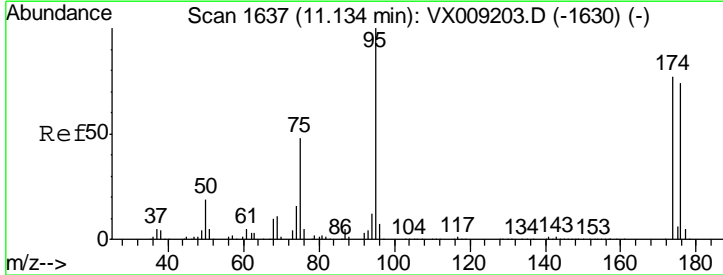
Instrument :
 MSVOA_X
ClientSampled :
 SS036MW004-190429DL

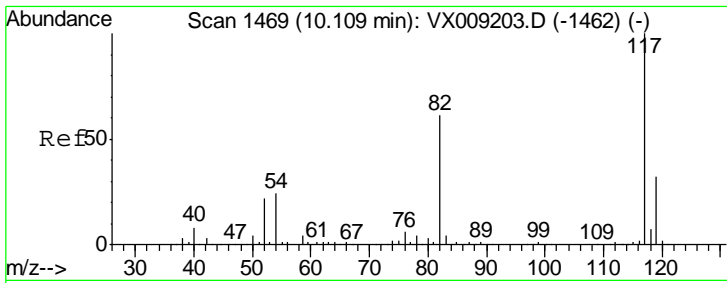
Tgt Ion	Resp	Lower	Upper
129	4376	100	
127	0.0	38.4	115.1#



#62
 4-Bromofluorobenzene
 Concen: 45.332 ug/l
 RT: 11.13 min Scan# 1637
 Delta R.T. 0.00 min
 Lab File: VX009292.D
 Acq: 02 May 2019 22:43

Tgt Ion	Resp	Lower	Upper
95	132629	100	
174	80.3	0.0	161.6
176	78.0	0.0	159.2

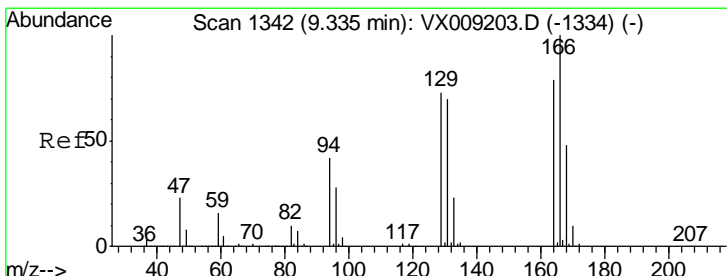
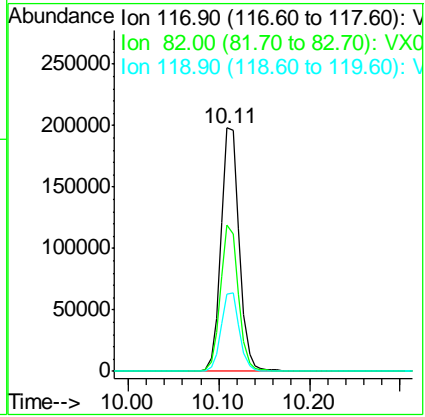
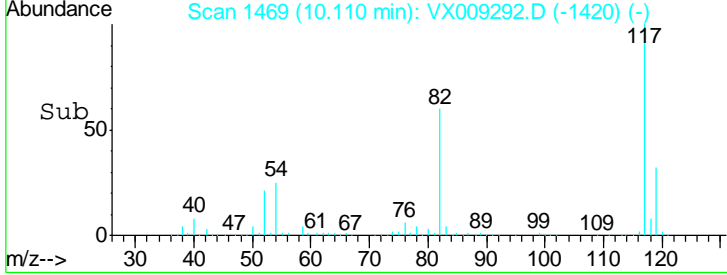
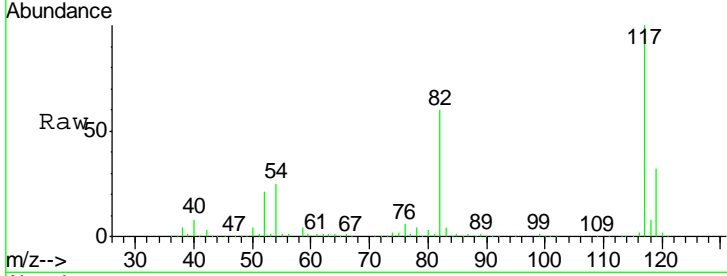




#63
 Chlorobenzene-d5
 Concen: 50.000 ug/l
 RT: 10.11 min Scan# 1469
 Delta R.T. 0.00 min
 Lab File: VX009292.D
 Acq: 02 May 2019 22:43

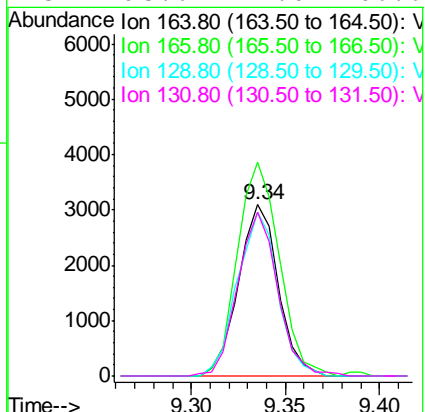
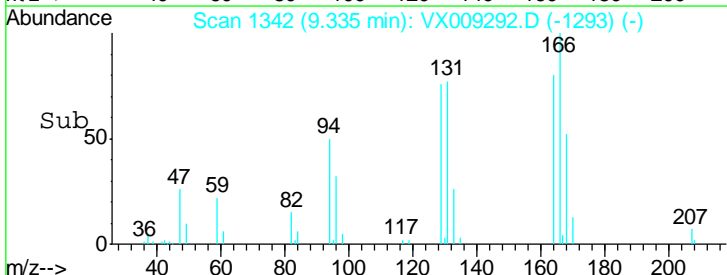
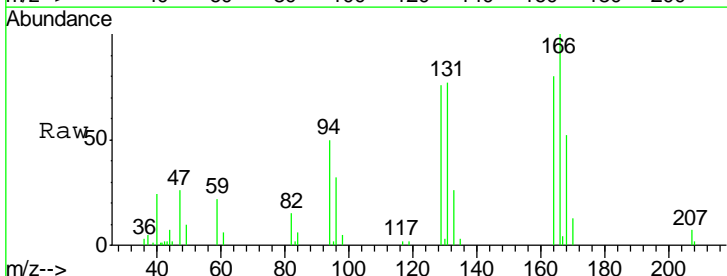
Instrument : MSVOA_X
 ClientSampled : SS036MW004-190429DL

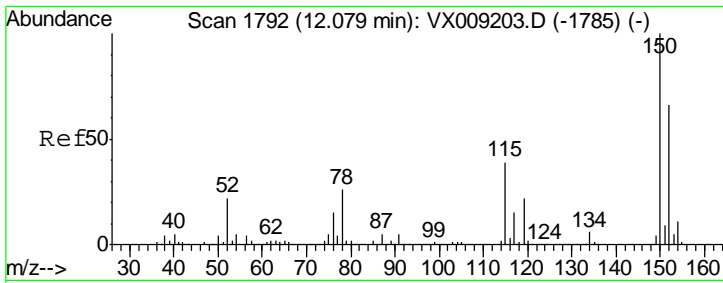
Tgt Ion	Resp	Lower	Upper
117	100		
82	59.9	48.8	73.2
119	31.9	25.8	38.6



#64
 Tetrachloroethene
 Concen: 2.377 ug/l
 RT: 9.34 min Scan# 1342
 Delta R.T. 0.00 min
 Lab File: VX009292.D
 Acq: 02 May 2019 22:43

Tgt Ion	Resp	Lower	Upper
164	100		
166	124.6	101.2	151.8
129	95.3	74.3	111.5
131	95.6	71.0	106.6

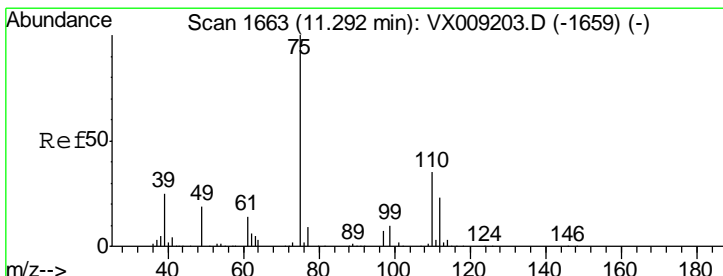
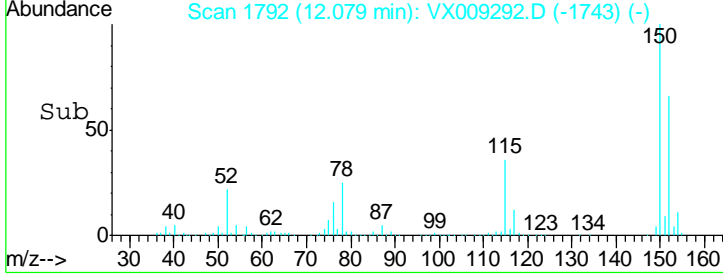
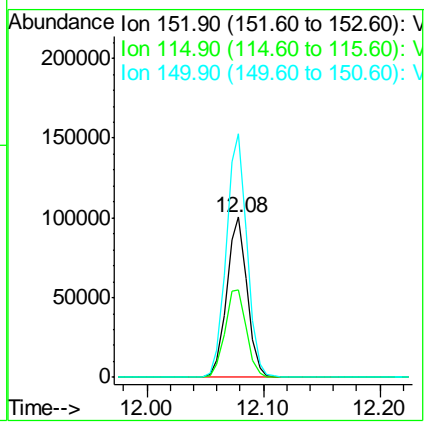
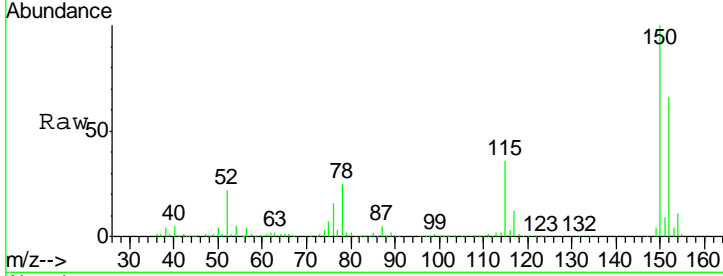




#72
 1,4-Dichlorobenzene-d4
 Concen: 50.000 ug/l
 RT: 12.08 min Scan# 1792
 Delta R.T. 0.00 min
 Lab File: VX009292.D
 Acq: 02 May 2019 22:43

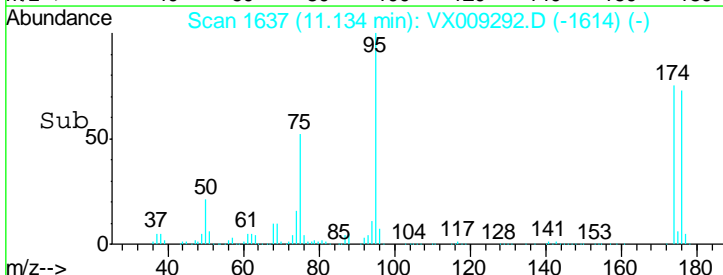
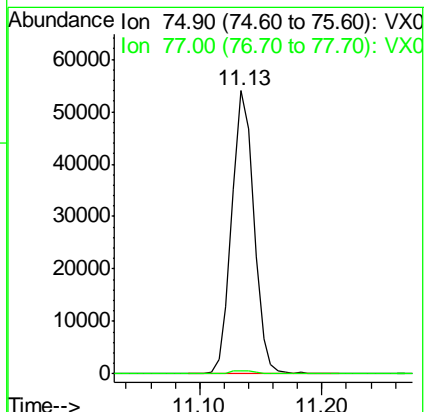
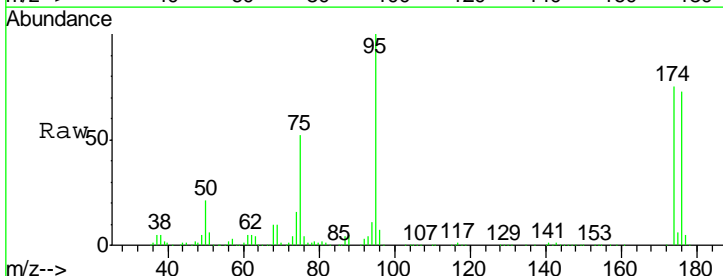
Instrument : MSVOA_X
 ClientSampleID : SS036MW004-190429DL

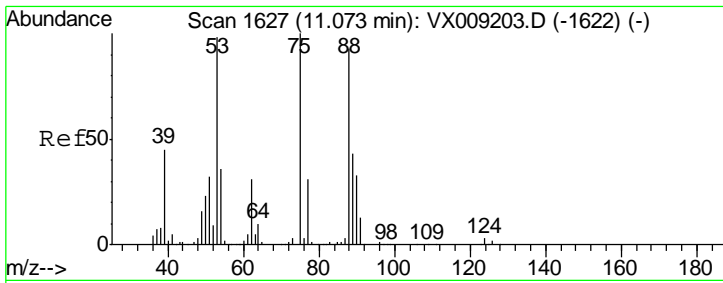
Tgt Ion	Resp	Lower	Upper
152	100		
115	57.7	41.2	123.6
150	154.5	0.0	346.4



#76
 1,2,3-Trichloropropane
 Concen: 24.016 ug/l
 RT: 11.13 min Scan# 1637
 Delta R.T. -0.16 min
 Lab File: VX009292.D
 Acq: 02 May 2019 22:43

Tgt Ion	Resp	Lower	Upper
75	100		
77	1.3	22.1	66.1

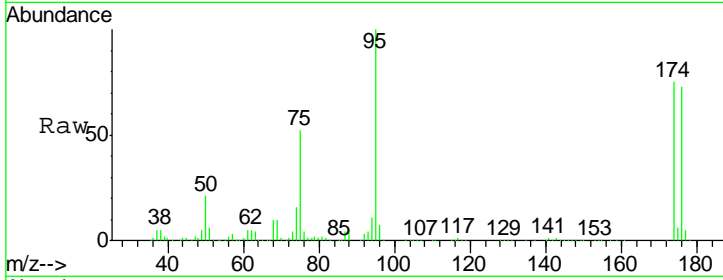




#81
 trans-1,4-Dichloro-2-butene
 Concen: 61.448 ug/l
 RT: 11.13 min Scan# 1637
 Delta R.T. 0.06 min
 Lab File: VX009292.D
 Acq: 02 May 2019 22:43

Instrument : MSVOA_X
 ClientSampleID : SS036MW004-190429DL

Tot Ion	Resp	Lower	Upper
75	100		
53	0.2	79.0	118.6#
89	0.0	34.7	52.1#



Abundance Ion 74.90 (74.60 to 75.60): VX0
 Ion 53.00 (52.70 to 53.70): VX0
 Ion 88.90 (88.60 to 89.60): VX0

