

Data Path : Z:\voasrv\HPCHEM1\MSVOA_X\Data\VX050222\
 Data File : VX028478.D
 Acq On : 02 May 2022 17:12
 Operator : JC/MD
 Sample : N2652-03
 Misc : 5.0mL/MSVOA_X/WATER
 ALS Vial : 12 Sample Multiplier: 1

Instrument :
 MSVOA_X
 ClientSampleId :
 STORAGE-BLANK-WATER-REF-4

Integration Parameters: RTEINT.P

Integrator: RTE
 Smoothing : ON Filtering: 5
 Sampling : 1 Min Area: 3 % of largest Peak
 Start Thrs: 0.2 Max Peaks: 100
 Stop Thrs : 0 Peak Location: TOP

If leading or trailing edge < 100 prefer < Baseline drop else tangent >
 Peak separation: 5

Method : Z:\voasrv\HPCHEM1\MSVOA_X\Method\82X041922W.M
 Title : SW846 8260

Signal : TIC: VX028478.D\data.ms

peak #	R.T. min	first scan	max scan	last scan	PK TY	peak height	corr. area	corr. % max.	% of total
1	2.526	231	236	243	rBV	14863	27458	1.09%	0.221%
2	5.385	694	705	720	rBV2	297116	869002	34.62%	6.991%
3	5.556	721	733	752	rVB	396830	1122817	44.73%	9.033%
4	5.958	788	799	812	rBV	303393	801279	31.92%	6.446%
5	6.763	920	931	945	rBV	632628	1497172	59.64%	12.045%
6	8.653	1233	1241	1252	rBV	1624600	2510475	100.00%	20.197%
7	10.055	1465	1471	1485	rBV	1483417	1927109	76.76%	15.504%
8	11.085	1634	1640	1651	rBV	1371925	1759769	70.10%	14.158%
9	12.024	1788	1794	1805	rBV	1610693	1914800	76.27%	15.405%

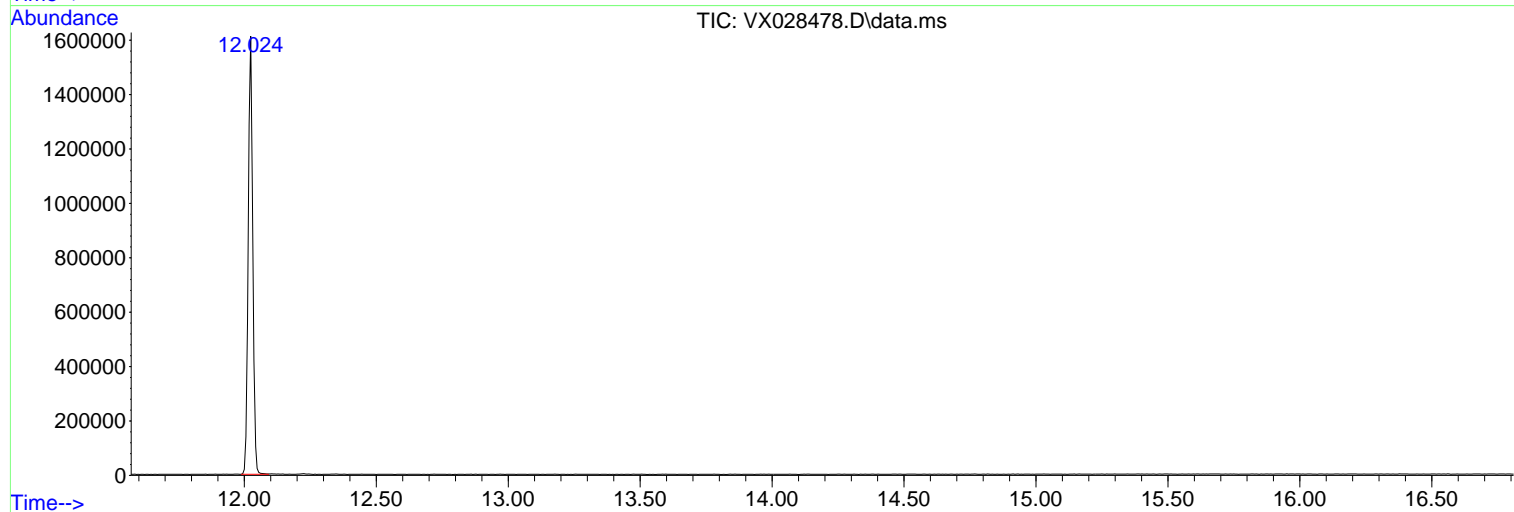
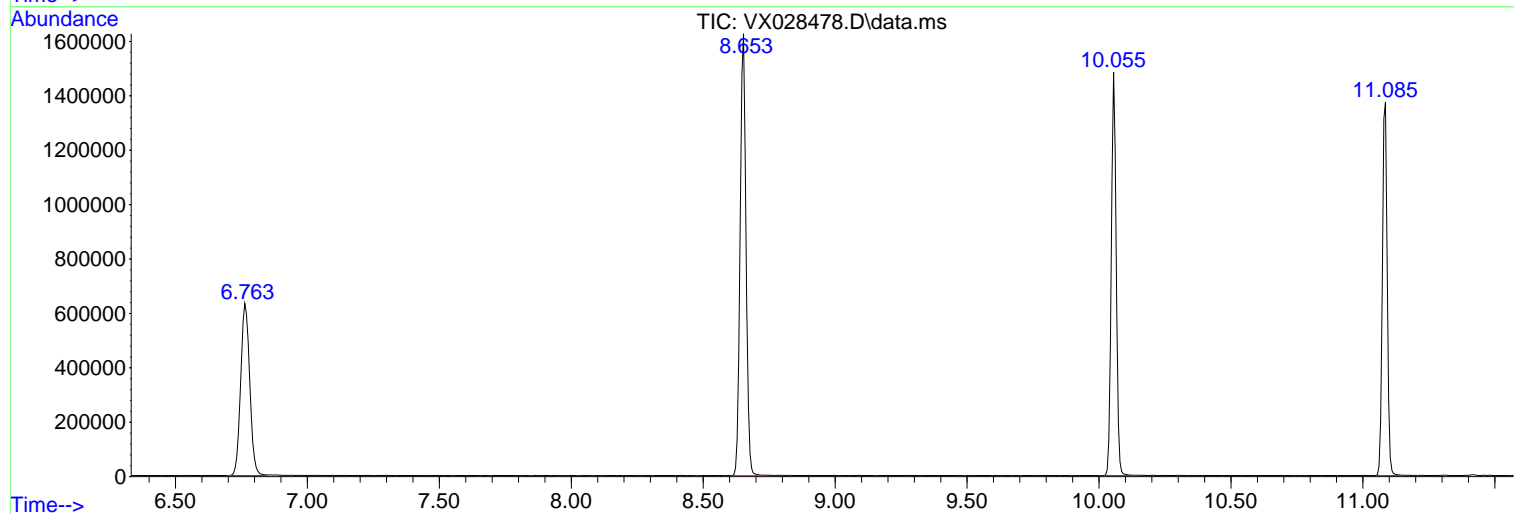
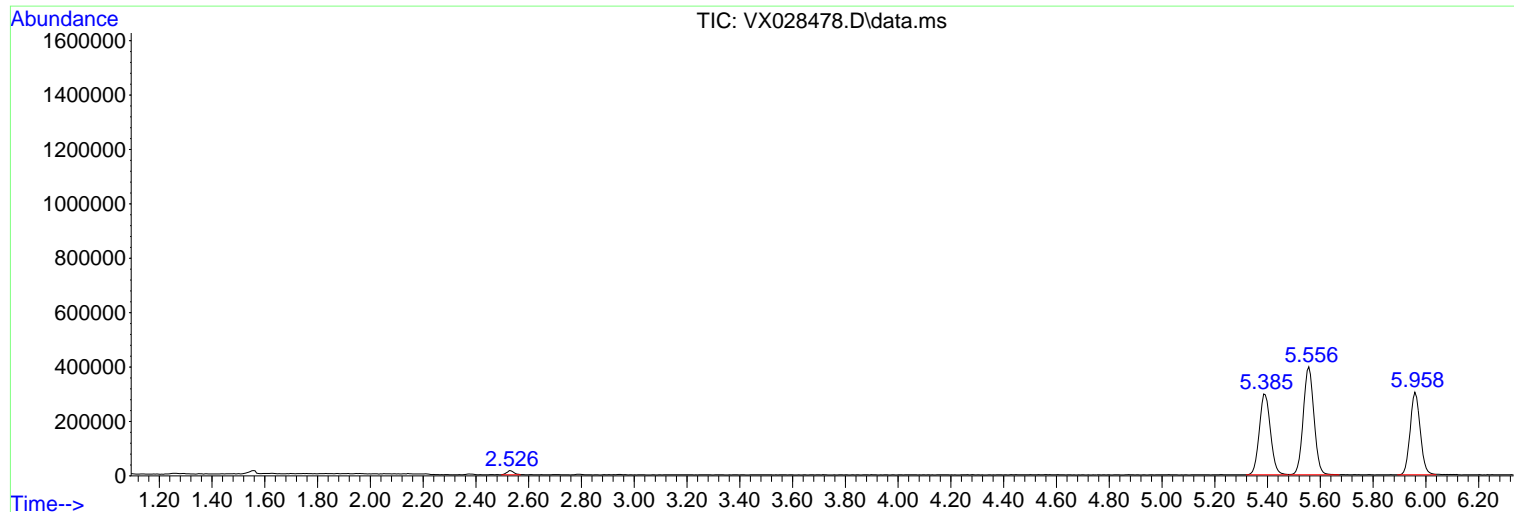
Sum of corrected areas: 12429881

Data Path : Z:\voasrv\HPCHEM1\MSVOA_X\Data\VX050222\
Data File : VX028478.D
Acq On : 02 May 2022 17:12
Operator : JC/MD
Sample : N2652-03
Misc : 5.0mL/MSVOA_X/WATER
ALS Vial : 12 Sample Multiplier: 1

Instrument :
MSVOA_X
ClientSampleId :
STORAGE-BLANK-WATER-REF-4

Quant Method : Z:\voasrv\HPCHEM1\MSVOA_X\Method\82X041922W.M
Quant Title : SW846 8260

TIC Library : C:\Database\NIST20.L
TIC Integration Parameters: LSCINT.P



Library Search Compound Report

Data Path : Z:\voasrv\HPCHEM1\MSVOA_X\Data\VX050222\
Data File : VX028478.D
Acq On : 02 May 2022 17:12
Operator : JC/MD
Sample : N2652-03
Misc : 5.0mL/MSVOA_X/WATER
ALS Vial : 12 Sample Multiplier: 1

Instrument :
MSVOA_X
ClientSampleId :
STORAGE-BLANK-WATER-REF-4

Quant Method : Z:\voasrv\HPCHEM1\MSVOA_X\Method\82X041922W.M
Quant Title : SW846 8260

TIC Library : C:\Database\NIST20.L
TIC Integration Parameters: LSCINT.P

No Library Search Compounds Detected

Data Path : Z:\voasrv\HPCHEM1\MSVOA_X\Data\VX050222\
Data File : VX028478.D
Acq On : 02 May 2022 17:12
Operator : JC/MD
Sample : N2652-03
Misc : 5.0mL/MSVOA_X/WATER
ALS Vial : 12 Sample Multiplier: 1

Instrument :
MSVOA_X
ClientSampleId :
STORAGE-BLANK-WATER-REF-4

Quant Method : Z:\voasrv\HPCHEM1\MSVOA_X\Method\82X041922W.M
Quant Title : SW846 8260

TIC Library : C:\Database\NIST20.L
TIC Integration Parameters: LSCINT.P

TIC Top Hit name	RT	EstConc	Units	Response	--Internal Standard--		
					#	RT	Resp Conc
