

Data Path : Z:\voasrv\HPCHEM1\MSVOA_X\Data\VX050223\
 Data File : VX035485.D
 Acq On : 02 May 2023 17:32
 Operator : JC/MD
 Sample : 02533-09
 Misc : 5.0mL/MSVOA_X/WATER
 ALS Vial : 21 Sample Multiplier: 1

Instrument :
 MSVOA_X
 ClientSampleId :
 LEA-11S

Integration Parameters: RTEINT.P

Integrator: RTE
 Smoothing : ON Filtering: 5
 Sampling : 1 Min Area: 3 % of largest Peak
 Start Thrs: 0.2 Max Peaks: 100
 Stop Thrs : 0 Peak Location: TOP

If leading or trailing edge < 100 prefer < Baseline drop else tangent >
 Peak separation: 5

Method : Z:\voasrv\HPCHEM1\MSVOA_X\Method\82X042523W.M
 Title : SW846 8260

Signal : TIC: VX035485.D\data.ms

peak #	R.T. min	first scan	max scan	last scan	PK TY	peak height	corr. area	corr. % max.	% of total
1	1.270	25	30	45	rBV	21121	54819	4.95%	0.899%
2	4.495	551	559	571	rBV2	7554	21803	1.97%	0.358%
3	5.385	693	705	722	rBV	126689	374878	33.84%	6.150%
4	5.550	722	732	747	rVV	227413	653840	59.01%	10.727%
5	5.958	789	799	815	rBV	135309	360594	32.55%	5.916%
6	6.763	920	931	949	rBV	350751	833160	75.20%	13.668%
7	7.129	984	991	1001	rVB2	6825	14876	1.34%	0.244%
8	8.647	1234	1240	1257	rBV	702381	1107928	100.00%	18.176%
9	10.055	1465	1471	1491	rBV	710663	962892	86.91%	15.797%
10	11.079	1634	1639	1652	rBV	592966	766141	69.15%	12.569%
11	12.024	1788	1794	1804	rBV	744811	944597	85.26%	15.497%

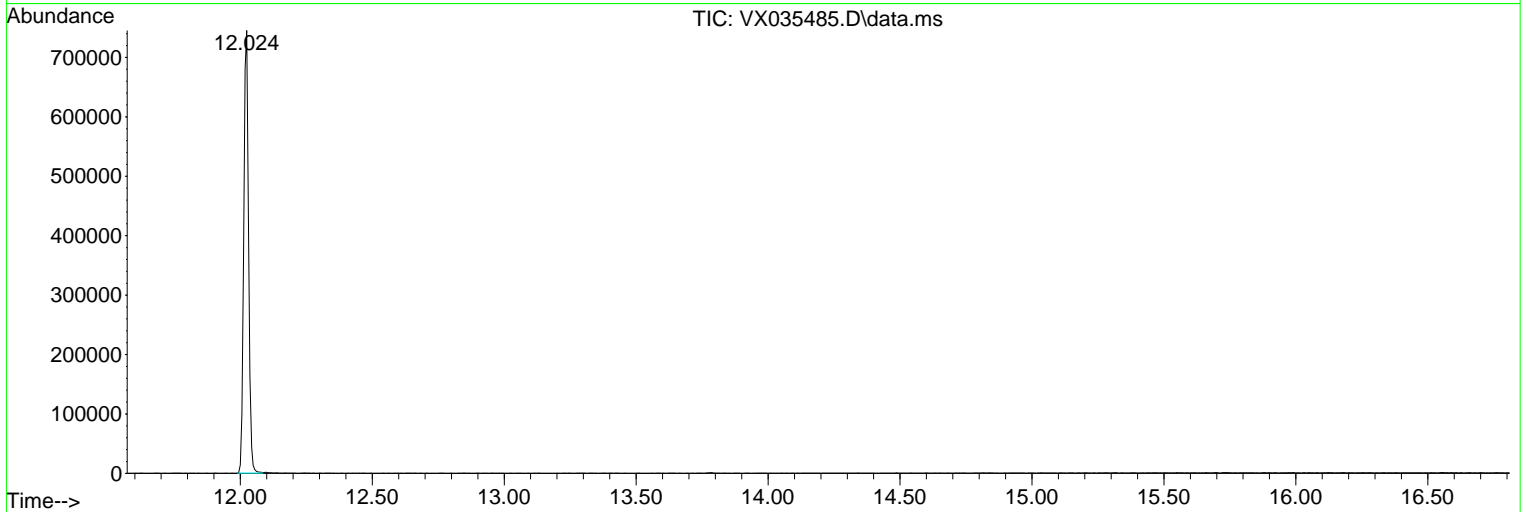
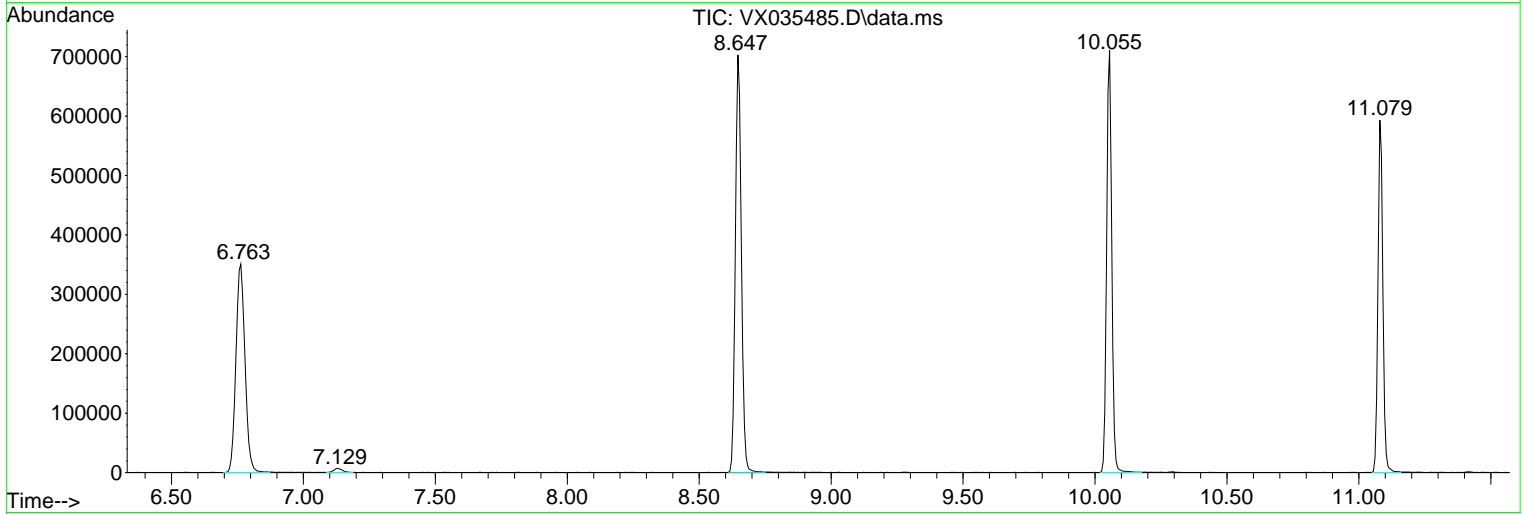
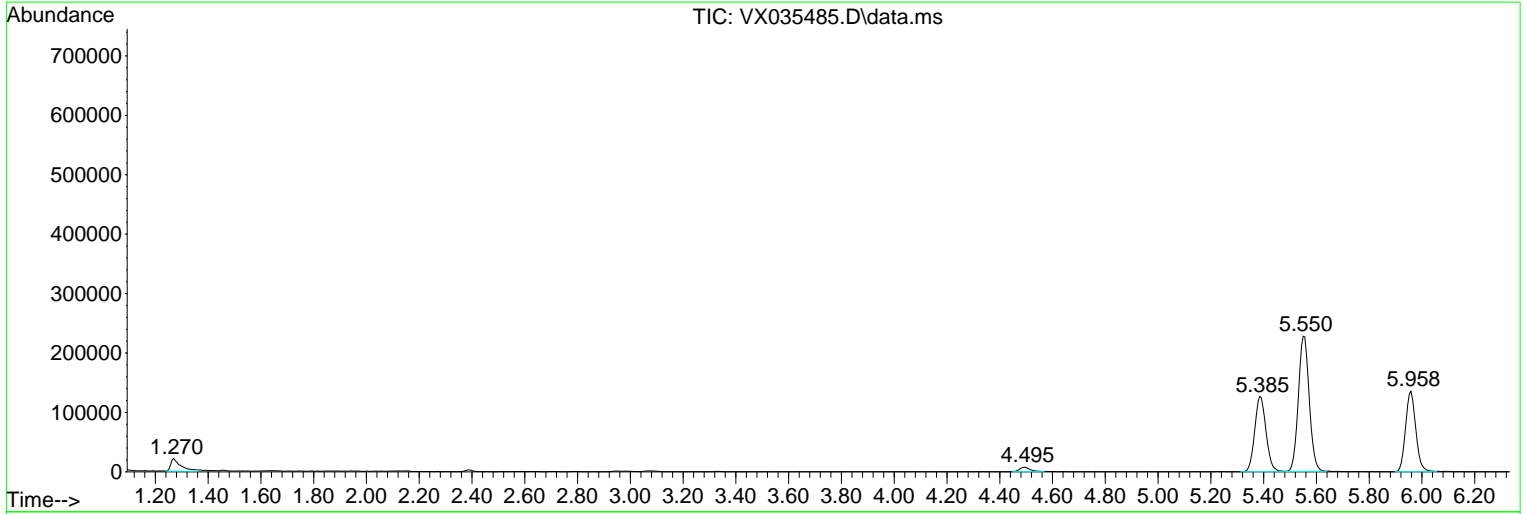
Sum of corrected areas: 6095528

Data Path : Z:\voasrv\HPCHEM1\MSVOA_X\Data\VX050223\
 Data File : VX035485.D
 Acq On : 02 May 2023 17:32
 Operator : JC/MD
 Sample : 02533-09
 Misc : 5.0mL/MSVOA_X/WATER
 ALS Vial : 21 Sample Multiplier: 1

Instrument :
 MSVOA_X
 ClientSampleId :
 LEA-11S

Quant Method : Z:\voasrv\HPCHEM1\MSVOA_X\Method\82X042523W.M
 Quant Title : SW846 8260

TIC Library : C:\Database\NIST20.L
 TIC Integration Parameters: LSCINT.P



Library Search Compound Report

Data Path : Z:\voasrv\HPCHEM1\MSVOA_X\Data\VX050223\
Data File : VX035485.D
Acq On : 02 May 2023 17:32
Operator : JC/MD
Sample : 02533-09
Misc : 5.0mL/MSVOA_X/WATER
ALS Vial : 21 Sample Multiplier: 1

Instrument :
MSVOA_X
ClientSampleId :
LEA-11S

Quant Method : Z:\voasrv\HPCHEM1\MSVOA_X\Method\82X042523W.M
Quant Title : SW846 8260

TIC Library : C:\Database\NIST20.L
TIC Integration Parameters: LSCINT.P

No Library Search Compounds Detected

Data Path : Z:\voasrv\HPCHEM1\MSVOA_X\Data\VX050223\
Data File : VX035485.D
Acq On : 02 May 2023 17:32
Operator : JC/MD
Sample : 02533-09
Misc : 5.0mL/MSVOA_X/WATER
ALS Vial : 21 Sample Multiplier: 1

Instrument :
MSVOA_X
ClientSampleId :
LEA-11S

Quant Method : Z:\voasrv\HPCHEM1\MSVOA_X\Method\82X042523W.M
Quant Title : SW846 8260

TIC Library : C:\Database\NIST20.L
TIC Integration Parameters: LSCINT.P

TIC Top Hit name	RT	EstConc	Units	Response	--Internal Standard--		
					#	RT	Resp Conc
