

Data Path : Z:\VOASRV\HPCHEM1\MSVOA X\DATA\VX050520\  
 Data File : VX016062.D  
 Acq On : 05 May 2020 14:34  
 Operator : JC/SP  
 Sample : L2508-02  
 Misc : 5.0mL/MSVOA X/WATER  
 ALS Vial : 13 Sample Multiplier: 1

**Instrument :**  
 MSVOA\_X  
**ClientSampleId :**  
 BP-VPB180-EB-20200504

Quant Time: May 06 09:08:44 2020  
 Quant Method : Z:\VOASRV\HPCHEM1\MSVOA\_X\METHOD\82X050420W.M  
 Quant Title : SW846 8260  
 QLast Update : Wed May 06 04:29:02 2020  
 Response via : Initial Calibration

| Internal Standards         | R.T.  | QIon | Response | Conc  | Units | Dev(Min) |
|----------------------------|-------|------|----------|-------|-------|----------|
| 1) Pentafluorobenzene      | 5.64  | 168  | 305804   | 50.00 | ug/l  | 0.00     |
| 34) 1,4-Difluorobenzene    | 6.84  | 114  | 507193   | 50.00 | ug/l  | 0.00     |
| 63) Chlorobenzene-d5       | 10.10 | 117  | 487714   | 50.00 | ug/l  | 0.00     |
| 72) 1,4-Dichlorobenzene-d4 | 12.06 | 152  | 254795   | 50.00 | ug/l  | 0.00     |

| System Monitoring Compounds | R.T.  | QIon | Response | Conc   | Units   | Dev(Min) |
|-----------------------------|-------|------|----------|--------|---------|----------|
| 33) 1,2-Dichloroethane-d4   | 6.04  | 65   | 190677   | 47.38  | ug/l    | 0.00     |
| Spiked Amount               |       |      |          | 50.000 |         |          |
| Recovery                    |       |      |          | =      | 94.76%  |          |
| 35) Dibromofluoromethane    | 5.47  | 113  | 147188   | 45.81  | ug/l    | 0.00     |
| Spiked Amount               |       |      |          | 50.000 |         |          |
| Recovery                    |       |      |          | =      | 91.62%  |          |
| 50) Toluene-d8              | 8.70  | 98   | 617578   | 49.88  | ug/l    | 0.00     |
| Spiked Amount               |       |      |          | 50.000 |         |          |
| Recovery                    |       |      |          | =      | 99.76%  |          |
| 62) 4-Bromofluorobenzene    | 11.12 | 95   | 250990   | 53.30  | ug/l    | 0.00     |
| Spiked Amount               |       |      |          | 50.000 |         |          |
| Recovery                    |       |      |          | =      | 106.60% |          |

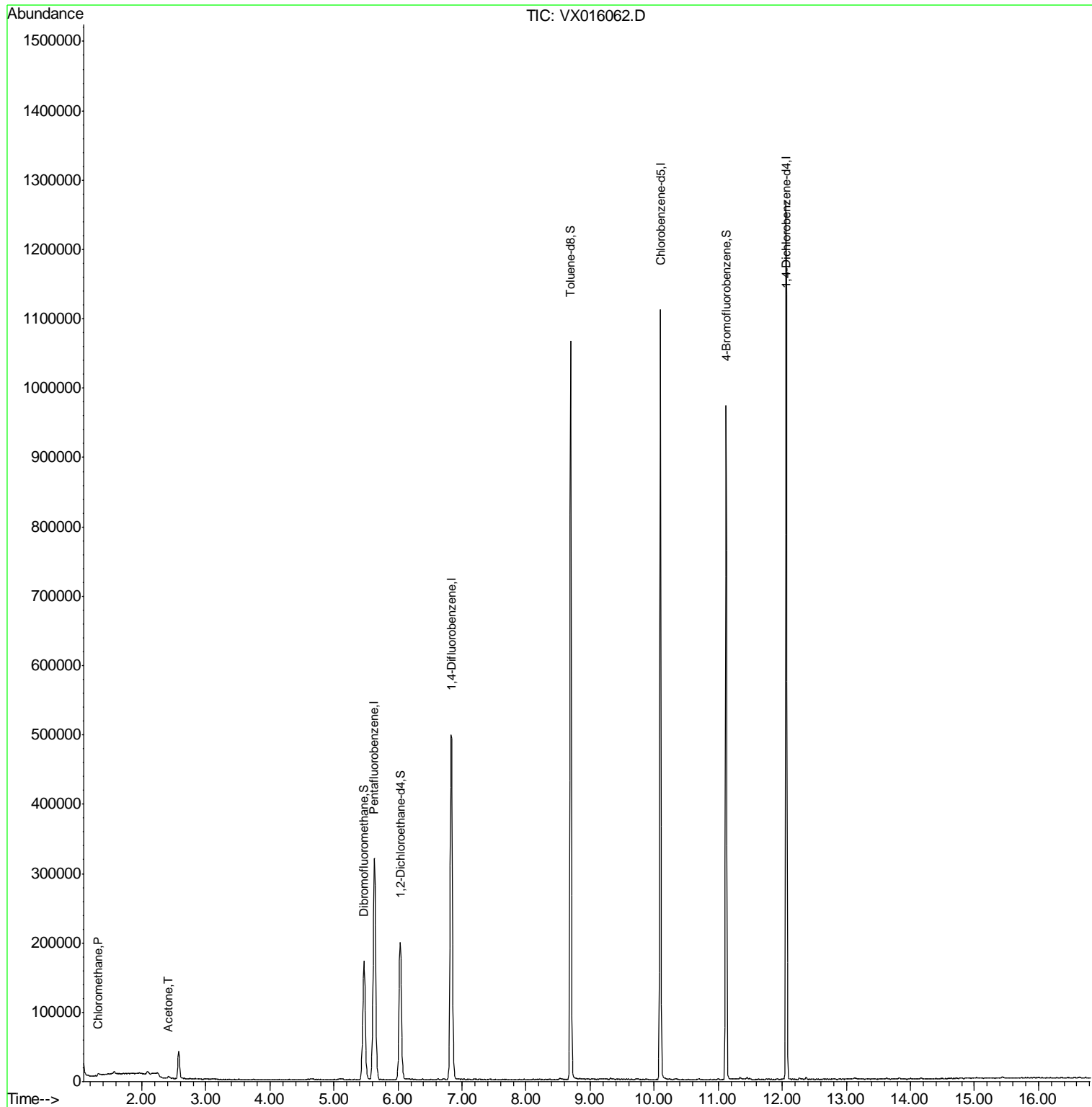
| Target Compounds | R.T. | QIon | Response | Conc  | Units  | Qvalue |
|------------------|------|------|----------|-------|--------|--------|
| 3) Chloromethane | 1.32 | 50   | 1118     | 0.297 | ug/l # | 64     |
| 16) Acetone      | 2.42 | 43   | 3090     | 1.721 | ug/l   | 98     |

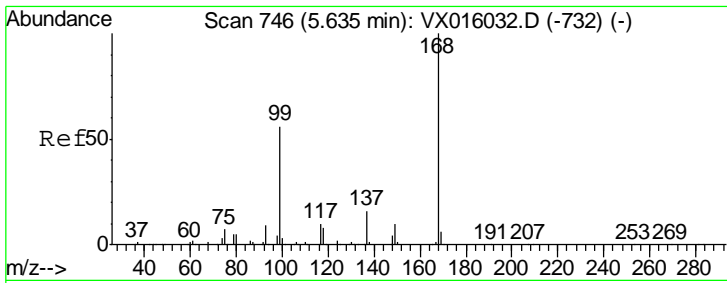
(#) = qualifier out of range (m) = manual integration (+) = signals summed

Data Path : Z:\VOASRV\HPCHEM1\MSVOA X\DATA\VX050520\  
 Data File : VX016062.D  
 Acq On : 05 May 2020 14:34  
 Operator : JC/SP  
 Sample : L2508-02  
 Misc : 5.0mL/MSVOA X/WATER  
 ALS Vial : 13 Sample Multiplier: 1

Instrument :  
 MSVOA\_X  
 ClientSampleID :  
 BP-VPB180-EB-20200504

Quant Time: May 06 09:08:44 2020  
 Quant Method : Z:\VOASRV\HPCHEM1\MSVOA\_X\METHOD\82X050420W.M  
 Quant Title : SW846 8260  
 QLast Update : Wed May 06 04:29:02 2020  
 Response via : Initial Calibration

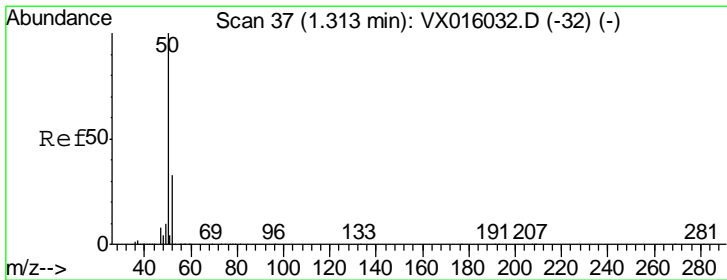
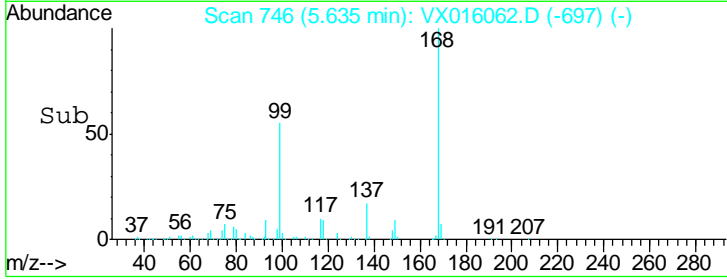
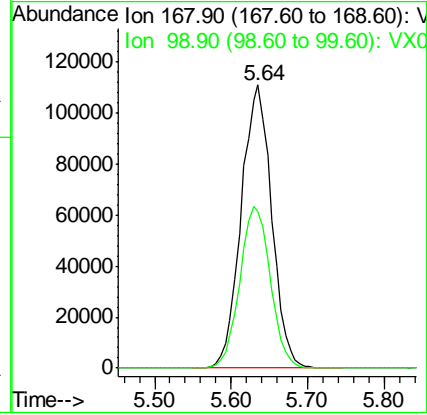
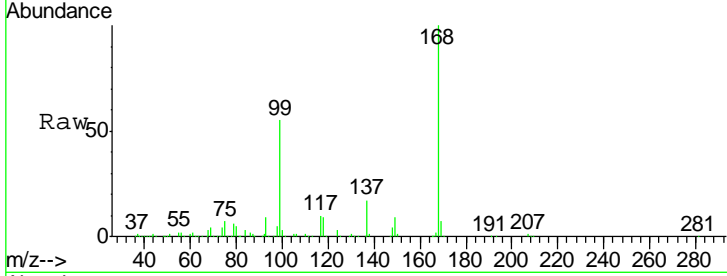




#1  
 Pentafluorobenzene  
 Concen: 50.000 ug/l  
 RT: 5.64 min Scan# 746  
 Delta R.T. -0.00 min  
 Lab File: VX016062.D  
 Acq: 05 May 2020 14:34

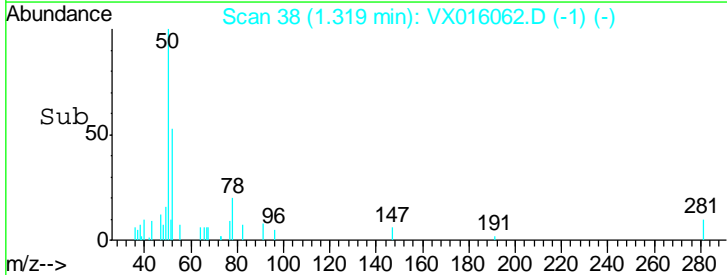
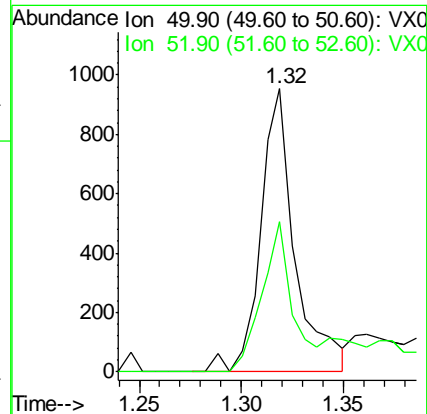
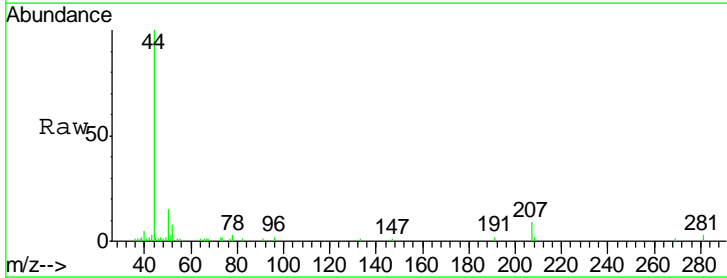
Instrument :  
 MSVOA\_X  
 ClientSampled :  
 BP-VPB180-EB-20200504

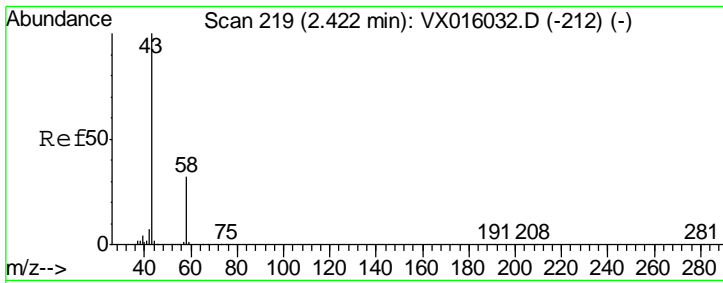
| Tgt Ion | Resp | Lower | Upper |
|---------|------|-------|-------|
| 168     | 100  |       |       |
| 99      | 55.4 | 45.0  | 67.4  |



#3  
 Chloromethane  
 Concen: 0.297 ug/l  
 RT: 1.32 min Scan# 38  
 Delta R.T. 0.01 min  
 Lab File: VX016062.D  
 Acq: 05 May 2020 14:34

| Tgt Ion | Resp | Lower | Upper |
|---------|------|-------|-------|
| 50      | 100  |       |       |
| 52      | 52.9 | 26.1  | 39.1# |

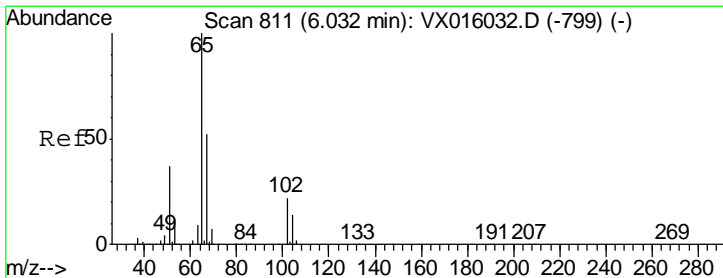
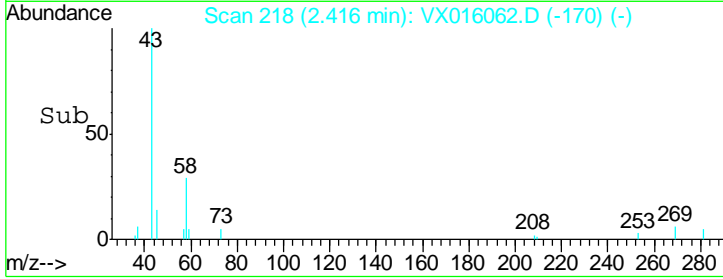
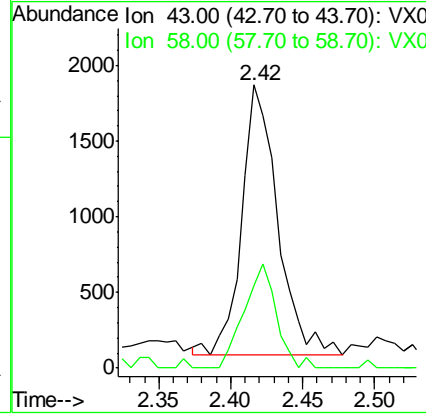
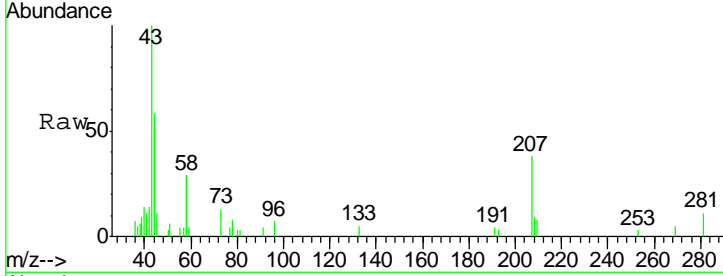




#16  
 Acetone  
 Concen: 1.721 ug/l  
 RT: 2.42 min Scan# 218  
 Delta R.T. -0.01 min  
 Lab File: VX016062.D  
 Acq: 05 May 2020 14:34

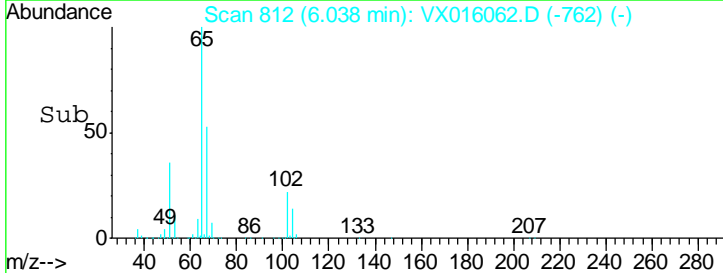
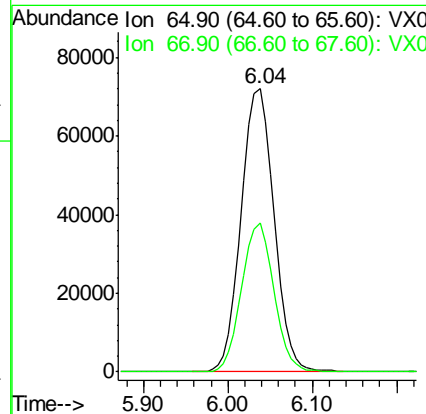
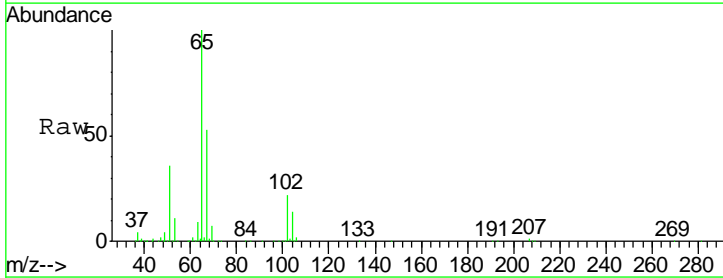
**Instrument :**  
 MSVOA\_X  
**ClientSampled :**  
 BP-VPB180-EB-20200504

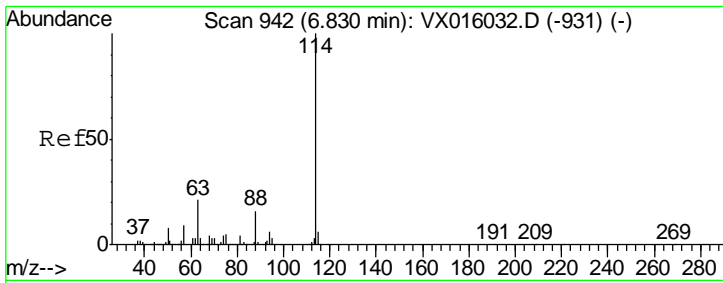
| Tgt Ion | Resp | Lower | Upper |
|---------|------|-------|-------|
| 43      | 100  |       |       |
| 58      | 30.5 | 25.4  | 38.0  |



#33  
 1,2-Dichloroethane-d4  
 Concen: 47.384 ug/l  
 RT: 6.04 min Scan# 812  
 Delta R.T. 0.01 min  
 Lab File: VX016062.D  
 Acq: 05 May 2020 14:34

| Tgt Ion | Resp | Lower | Upper |
|---------|------|-------|-------|
| 65      | 100  |       |       |
| 67      | 51.7 | 0.0   | 104.8 |

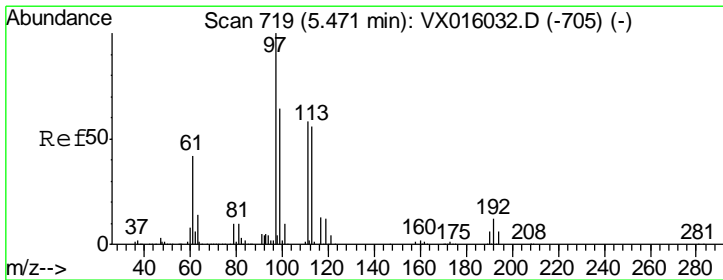
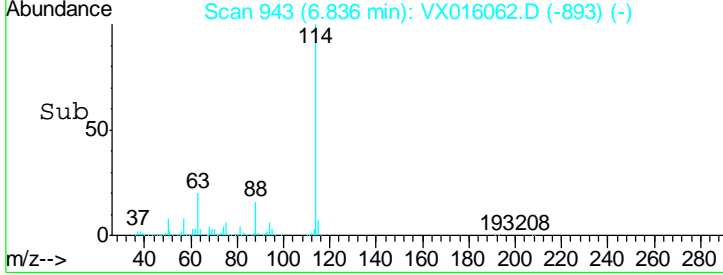
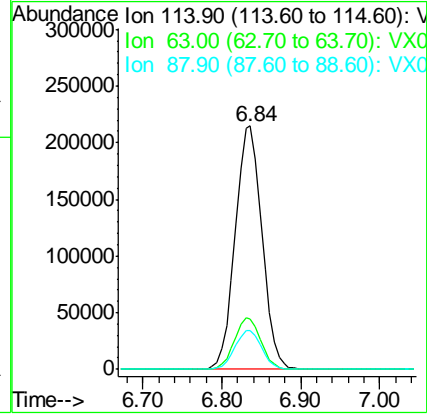
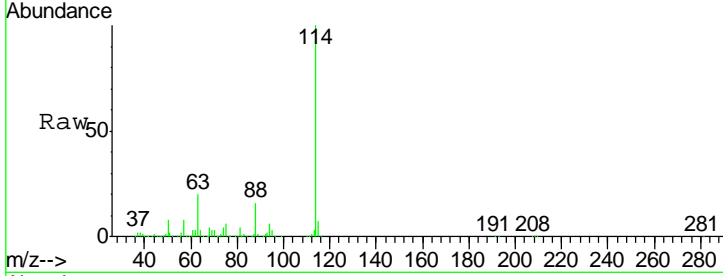




#34  
 1,4-Difluorobenzene  
 Concen: 50.000 ug/l  
 RT: 6.84 min Scan# 943  
 Delta R.T. 0.01 min  
 Lab File: VX016062.D  
 Acq: 05 May 2020 14:34

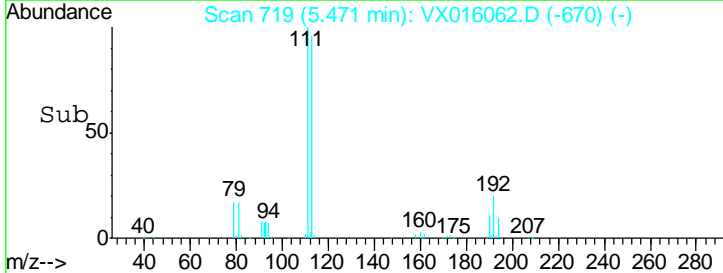
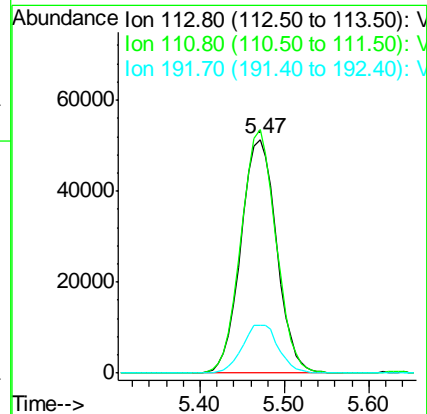
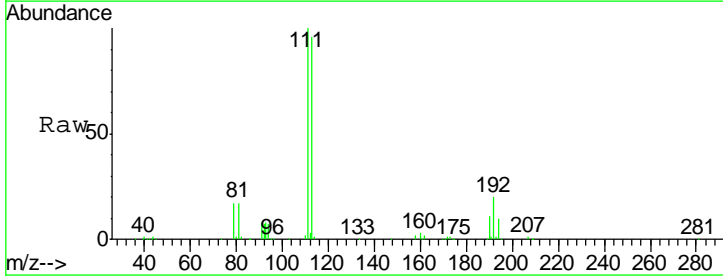
Instrument :  
 MSVOA\_X  
 ClientSampleId :  
 BP-VPB180-EB-20200504

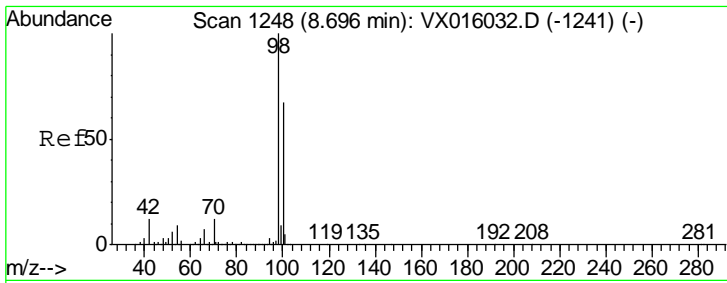
| Tgt Ion | Resp | Lower | Upper |
|---------|------|-------|-------|
| 114     | 100  |       |       |
| 63      | 20.4 | 0.0   | 42.8  |
| 88      | 15.9 | 0.0   | 31.4  |



#35  
 Dibromofluoromethane  
 Concen: 45.806 ug/l  
 RT: 5.47 min Scan# 719  
 Delta R.T. -0.00 min  
 Lab File: VX016062.D  
 Acq: 05 May 2020 14:34

| Tgt Ion | Resp  | Lower | Upper |
|---------|-------|-------|-------|
| 113     | 100   |       |       |
| 111     | 102.1 | 81.6  | 122.4 |
| 192     | 21.1  | 17.0  | 25.4  |

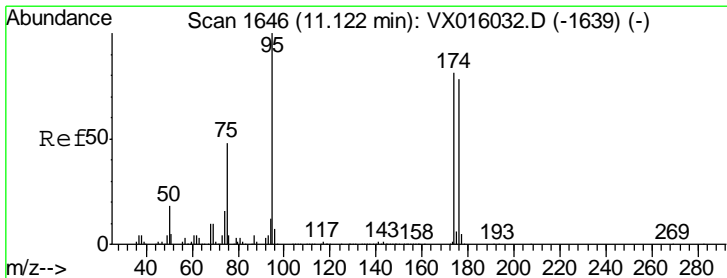
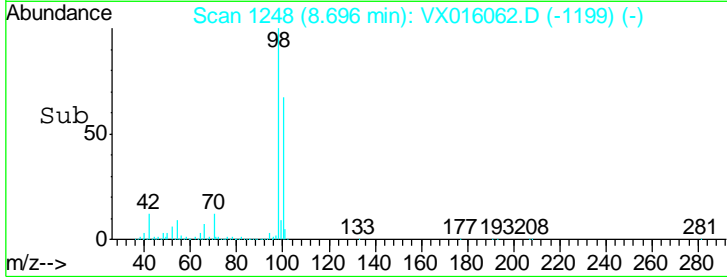
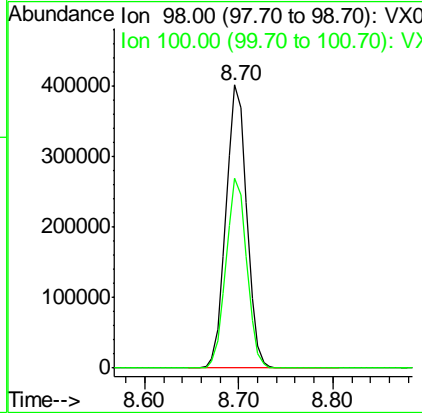
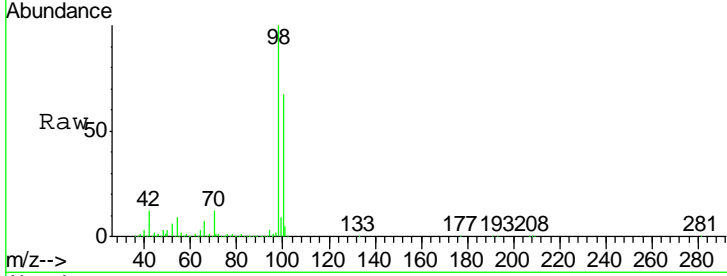




#50  
 Toluene-d8  
 Concen: 49.881 ug/l  
 RT: 8.70 min Scan# 1248  
 Delta R.T. -0.00 min  
 Lab File: VX016062.D  
 Acq: 05 May 2020 14:34

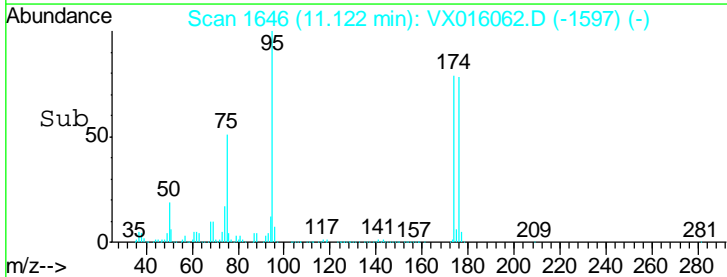
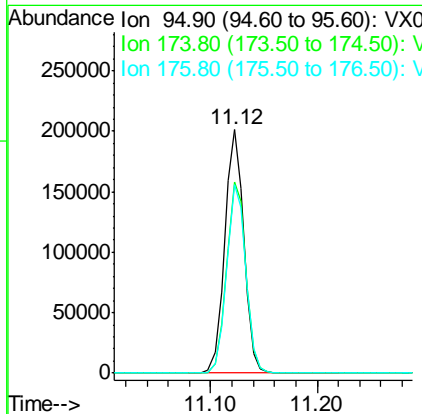
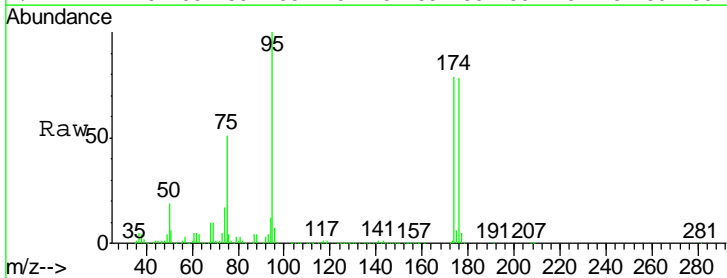
**Instrument :**  
 MSVOA\_X  
**ClientSampled :**  
 BP-VPB180-EB-20200504

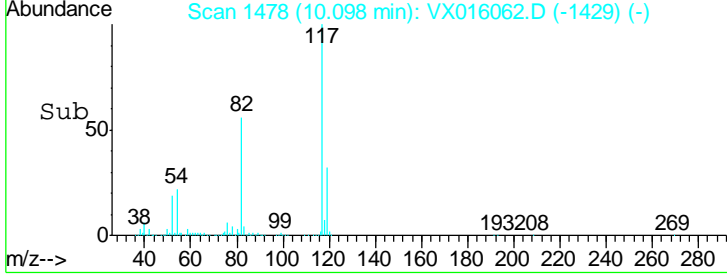
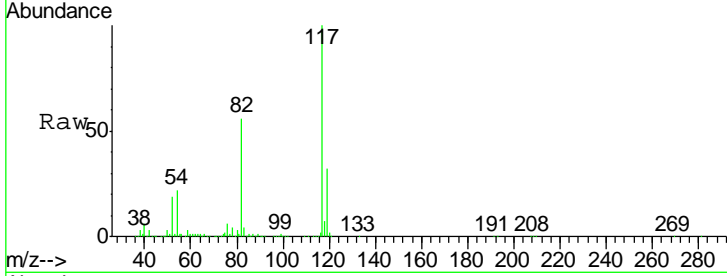
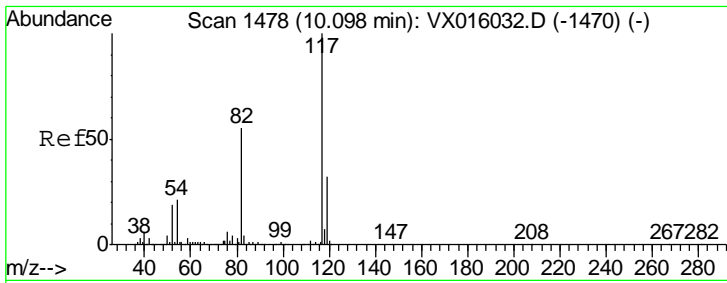
| Tgt Ion | Resp   | Lower | Upper |
|---------|--------|-------|-------|
| 98      | 617578 |       |       |
| 100     | 100    |       |       |
| 100     | 66.9   | 53.7  | 80.5  |



#62  
 4-Bromofluorobenzene  
 Concen: 53.298 ug/l  
 RT: 11.12 min Scan# 1646  
 Delta R.T. -0.00 min  
 Lab File: VX016062.D  
 Acq: 05 May 2020 14:34

| Tgt Ion | Resp   | Lower | Upper |
|---------|--------|-------|-------|
| 95      | 250990 |       |       |
| 95      | 100    |       |       |
| 174     | 79.9   | 0.0   | 159.4 |
| 176     | 78.2   | 0.0   | 157.6 |

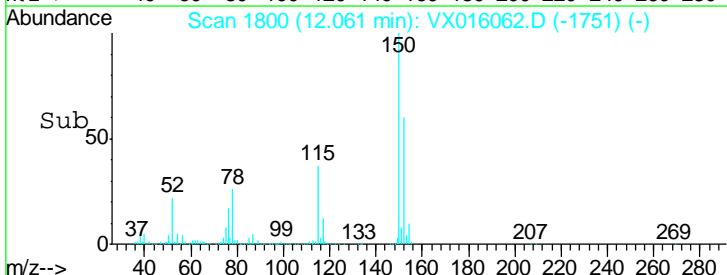
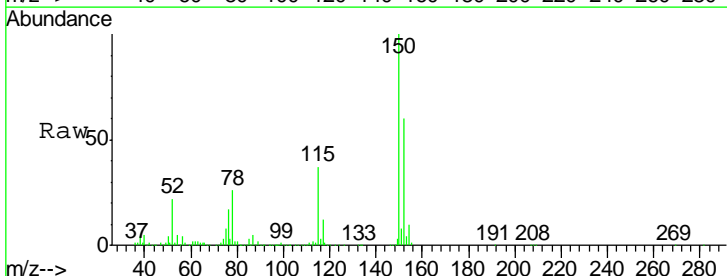
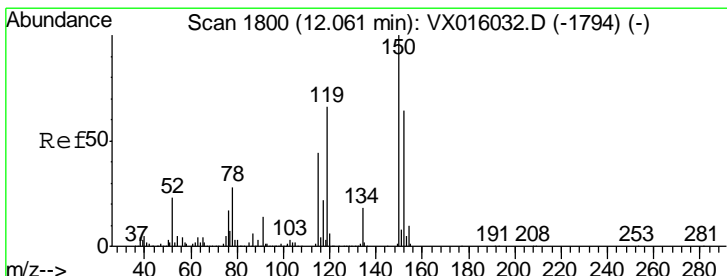
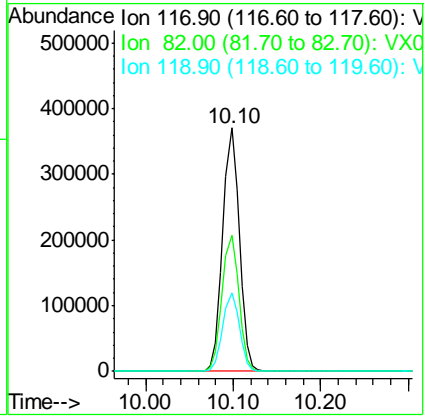




#63  
 Chlorobenzene-d5  
 Concen: 50.000 ug/l  
 RT: 10.10 min Scan# 1478  
 Delta R.T. -0.00 min  
 Lab File: VX016062.D  
 Acq: 05 May 2020 14:34

Instrument : MSVOA\_X  
 ClientSampled : BP-VPB180-EB-20200504

| Tgt Ion | Resp   | Lower | Upper |
|---------|--------|-------|-------|
| 117     | 487714 |       |       |
| 82      | 56.0   | 44.4  | 66.6  |
| 119     | 32.4   | 25.5  | 38.3  |



#72  
 1,4-Dichlorobenzene-d4  
 Concen: 50.000 ug/l  
 RT: 12.06 min Scan# 1800  
 Delta R.T. -0.00 min  
 Lab File: VX016062.D  
 Acq: 05 May 2020 14:34

| Tgt Ion | Resp   | Lower | Upper |
|---------|--------|-------|-------|
| 152     | 254795 |       |       |
| 115     | 59.6   | 41.3  | 124.1 |
| 150     | 158.5  | 0.0   | 352.2 |

