

Data Path : Z:\VOASRV\HPCHEM1\MSVOA X\DATA\VX050520\
 Data File : VX016063.D
 Acq On : 05 May 2020 14:57
 Operator : JC/SP
 Sample : L2469-21
 Misc : 5.0mL/MSVOA X/WATER
 ALS Vial : 14 Sample Multiplier: 1

Instrument :
 MSVOA_X
 ClientSampleId :
 SA-PZ147-20200428

Quant Time: May 06 09:12:39 2020
 Quant Method : Z:\VOASRV\HPCHEM1\MSVOA_X\METHOD\82X050420W.M
 Quant Title : SW846 8260
 QLast Update : Wed May 06 06:43:32 2020
 Response via : Initial Calibration

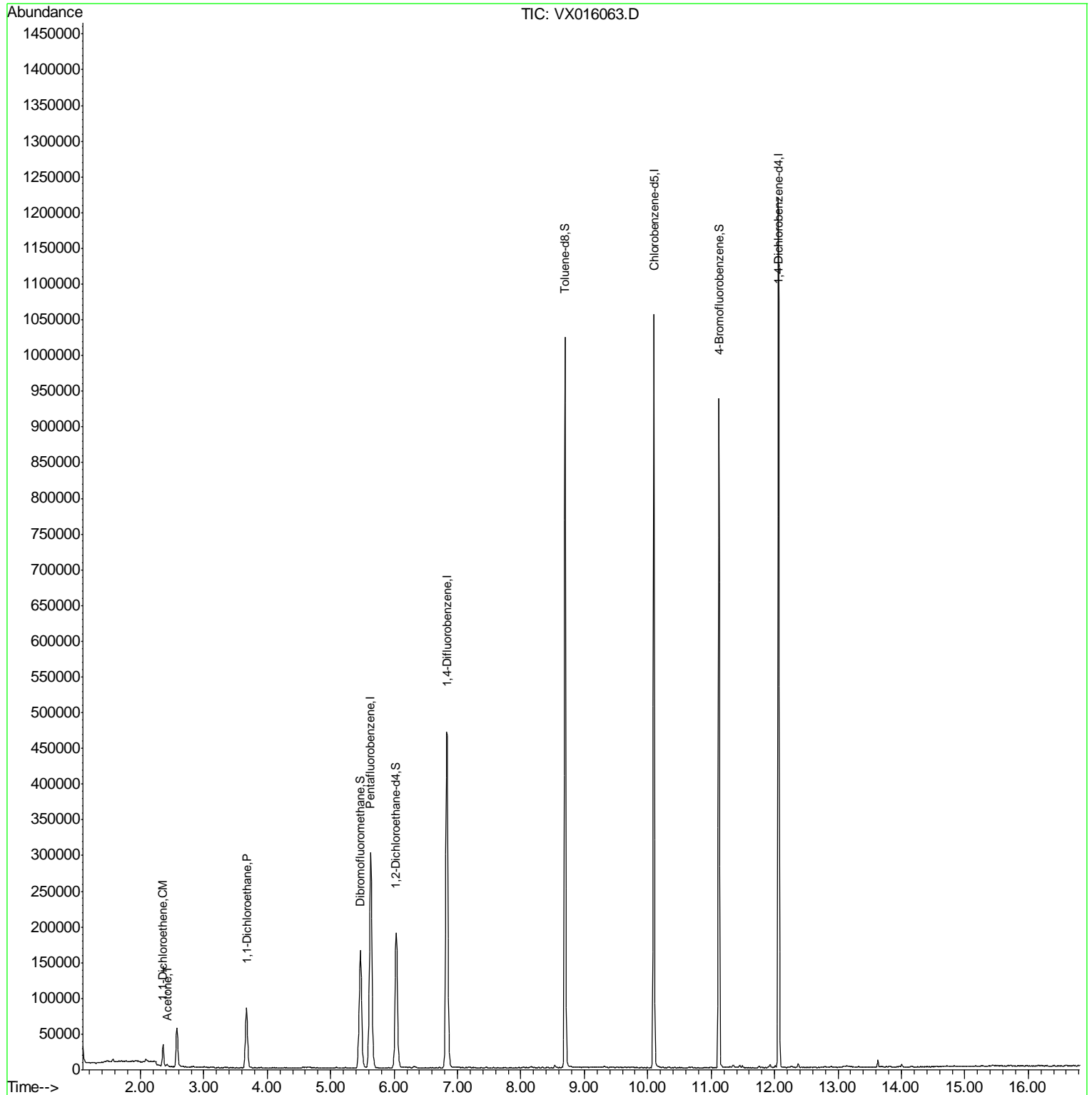
Internal Standards	R.T.	QIon	Response	Conc	Units	Dev(Min)
1) Pentafluorobenzene	5.64	168	290831	50.00	ug/l	0.00
34) 1,4-Difluorobenzene	6.83	114	482019	50.00	ug/l	0.00
63) Chlorobenzene-d5	10.10	117	467759	50.00	ug/l	0.00
72) 1,4-Dichlorobenzene-d4	12.06	152	246554	50.00	ug/l	0.00
System Monitoring Compounds						
33) 1,2-Dichloroethane-d4	6.03	65	181743	47.49	ug/l	0.00
Spiked Amount	50.000		Recovery	=	94.98%	
35) Dibromofluoromethane	5.47	113	140252	45.93	ug/l	0.00
Spiked Amount	50.000		Recovery	=	91.86%	
50) Toluene-d8	8.70	98	590852	50.21	ug/l	0.00
Spiked Amount	50.000		Recovery	=	100.42%	
62) 4-Bromofluorobenzene	11.12	95	241141	53.88	ug/l	0.00
Spiked Amount	50.000		Recovery	=	107.76%	
Target Compounds						
12) 1,1-Dichloroethene	2.36	96	10424	3.448	ug/l	94
16) Acetone	2.42	43	3089	1.809	ug/l	95
24) 1,1-Dichloroethane	3.67	63	97568	16.678	ug/l	100

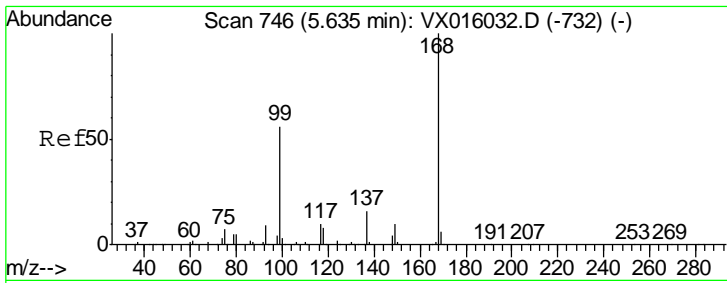
(#) = qualifier out of range (m) = manual integration (+) = signals summed

Data Path : Z:\VOASRV\HPCHEM1\MSVOA X\DATA\VX050520\
Data File : VX016063.D
Acq On : 05 May 2020 14:57
Operator : JC/SP
Sample : L2469-21
Misc : 5.0mL/MSVOA X/WATER
ALS Vial : 14 Sample Multiplier: 1

Instrument :
MSVOA_X
Client Sampled :
SA-PZ147-20200428

Quant Time: May 06 09:12:39 2020
Quant Method : Z:\VOASRV\HPCHEM1\MSVOA_X\METHOD\82X050420W.M
Quant Title : SW846 8260
QLast Update : Wed May 06 06:43:32 2020
Response via : Initial Calibration

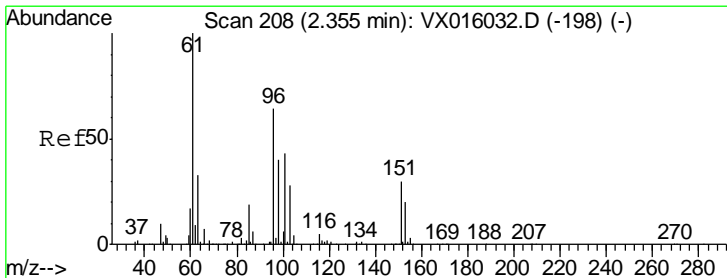
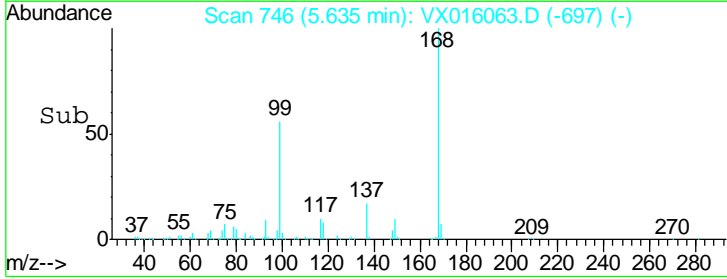
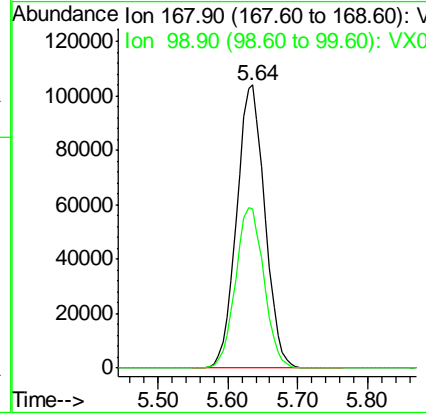
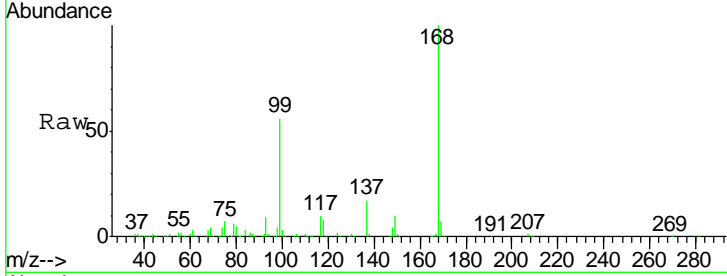




#1
 Pentafluorobenzene
 Concen: 50.000 ug/l
 RT: 5.64 min Scan# 746
 Delta R.T. -0.00 min
 Lab File: VX016063.D
 Acq: 05 May 2020 14:57

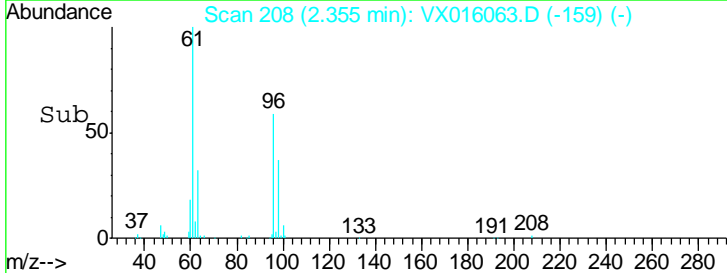
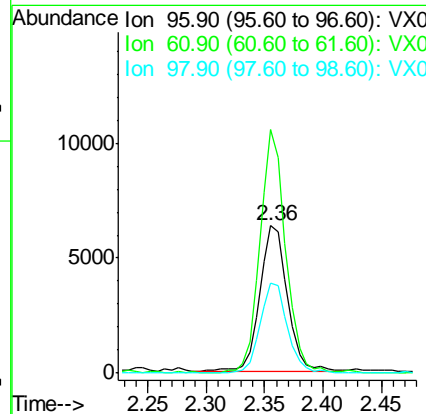
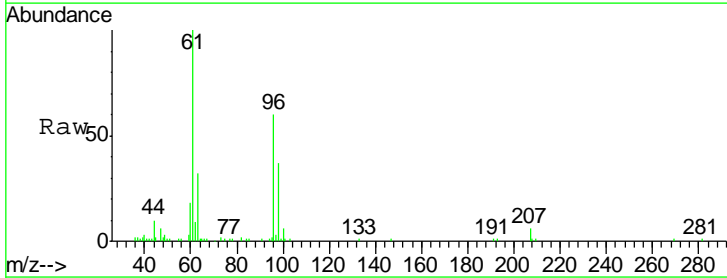
Instrument :
 MSVOA_X
 ClientSampleId :
 SA-PZ147-20200428

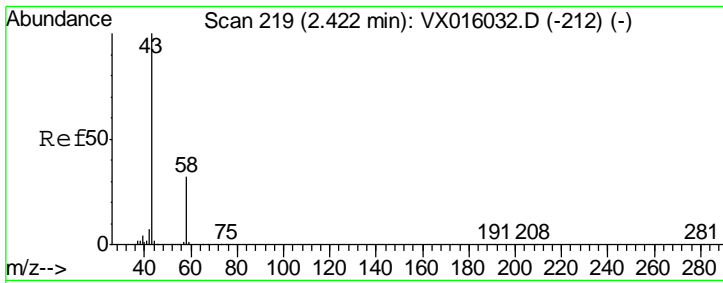
Tgt Ion	Resp	Lower	Upper
168	100		
99	56.5	45.0	67.4



#12
 1,1-Dichloroethene
 Concen: 3.448 ug/l
 RT: 2.36 min Scan# 208
 Delta R.T. -0.00 min
 Lab File: VX016063.D
 Acq: 05 May 2020 14:57

Tgt Ion	Resp	Lower	Upper
96	100		
61	166.9	124.8	187.2
98	62.0	49.7	74.5

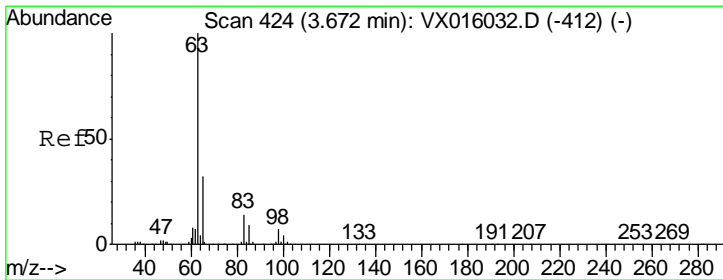
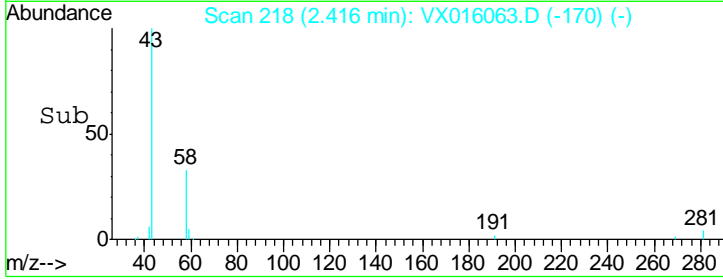
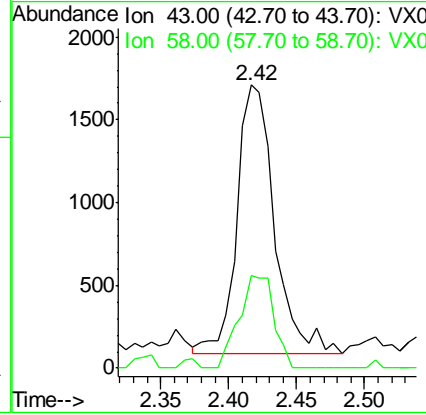
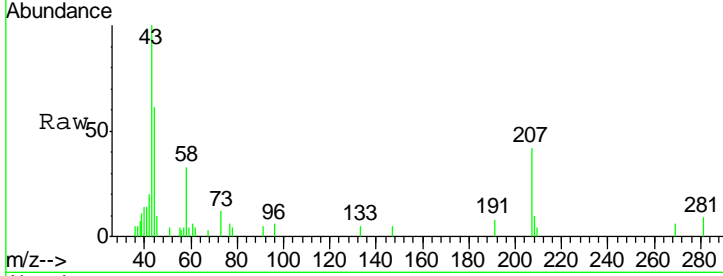




#16
 Acetone
 Concen: 1.809 ug/l
 RT: 2.42 min Scan# 218
 Delta R.T. -0.01 min
 Lab File: VX016063.D
 Acq: 05 May 2020 14:57

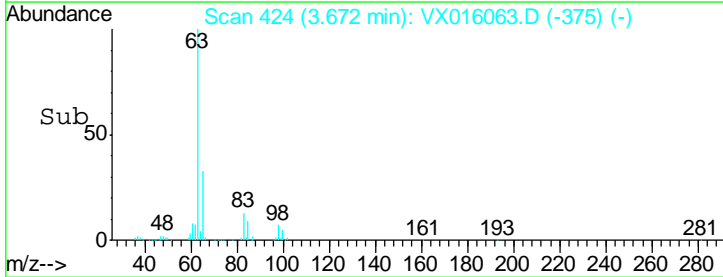
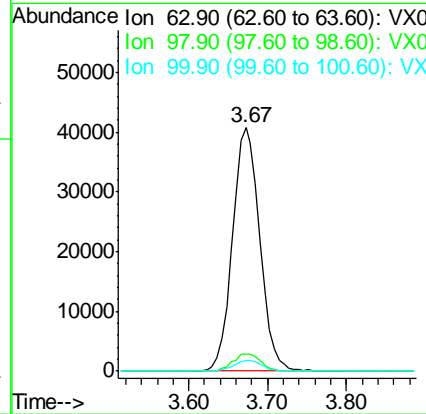
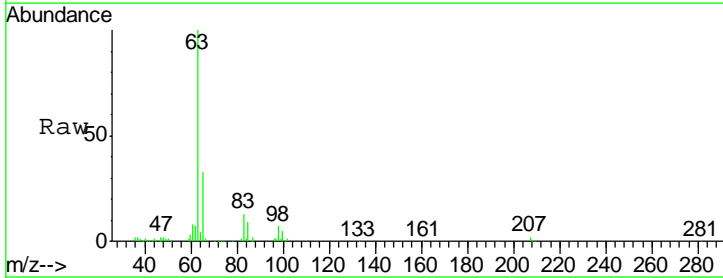
Instrument : MSVOA_X
 ClientSampled : SA-PZ147-20200428

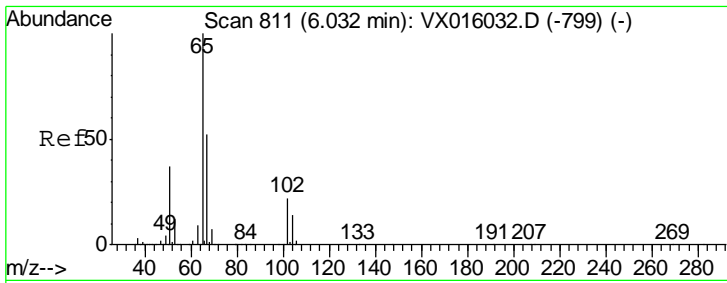
Tgt Ion	Resp	Lower	Upper
43	100		
58	34.6	25.4	38.0



#24
 1,1-Dichloroethane
 Concen: 16.678 ug/l
 RT: 3.67 min Scan# 424
 Delta R.T. -0.00 min
 Lab File: VX016063.D
 Acq: 05 May 2020 14:57

Tgt Ion	Resp	Lower	Upper
63	100		
98	6.9	3.5	10.5
100	4.6	2.1	6.5

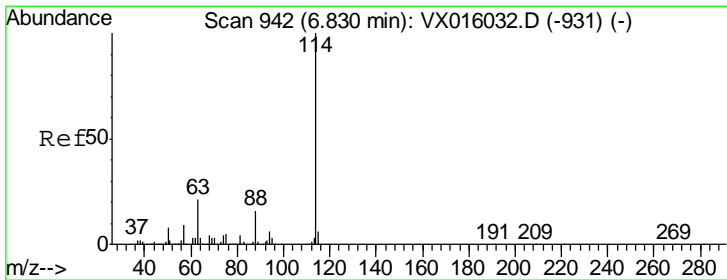
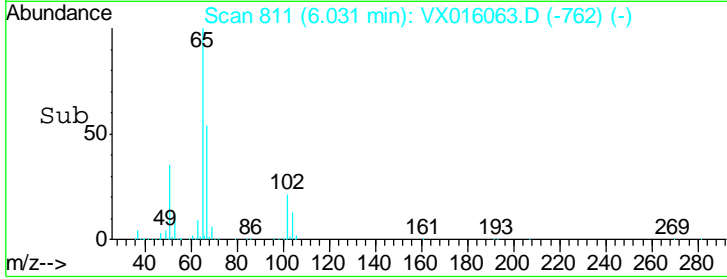
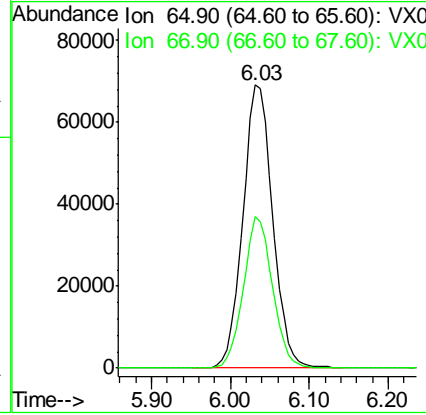
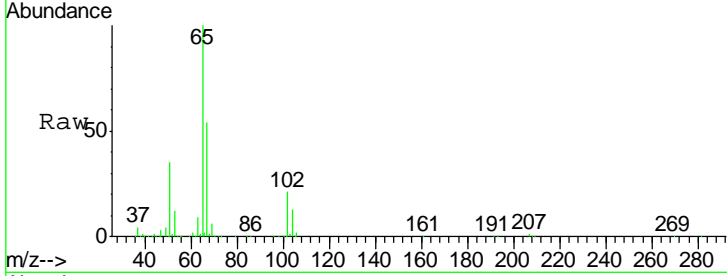




#33
 1,2-Dichloroethane-d4
 Concen: 47.489 ug/l
 RT: 6.03 min Scan# 811
 Delta R.T. -0.00 min
 Lab File: VX016063.D
 Acq: 05 May 2020 14:57

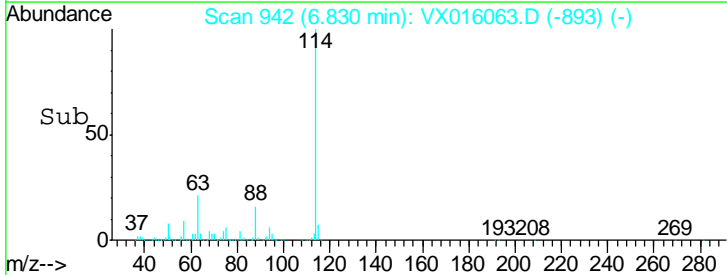
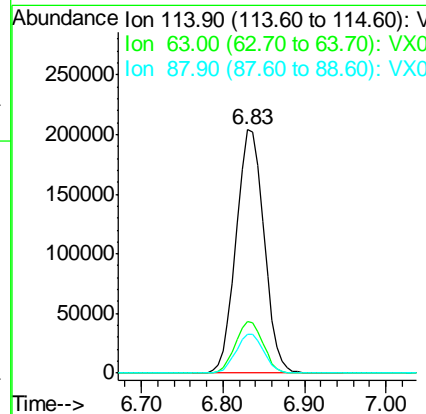
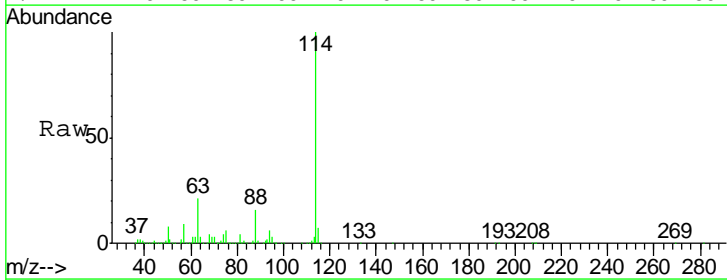
Instrument :
 MSVOA_X
 ClientSampleId :
 SA-PZ147-20200428

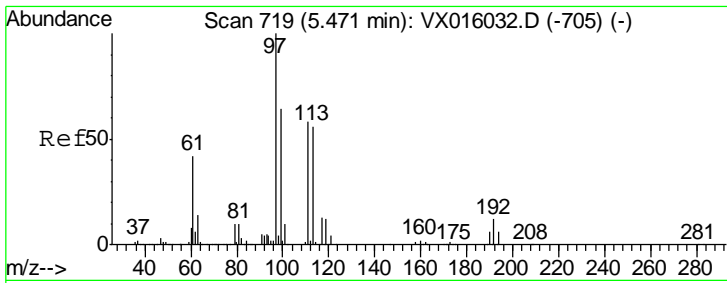
Tgt Ion	Resp	Lower	Upper
65	181743		
67	52.4	0.0	104.8



#34
 1,4-Difluorobenzene
 Concen: 50.000 ug/l
 RT: 6.83 min Scan# 942
 Delta R.T. -0.00 min
 Lab File: VX016063.D
 Acq: 05 May 2020 14:57

Tgt Ion	Resp	Lower	Upper
114	482019		
63	21.1	0.0	42.8
88	15.8	0.0	31.4

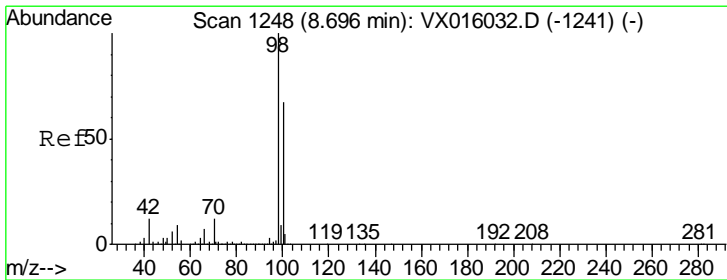
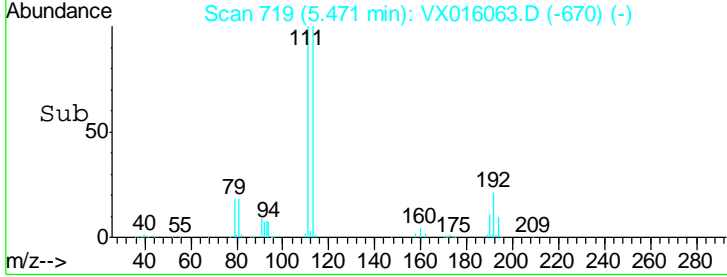
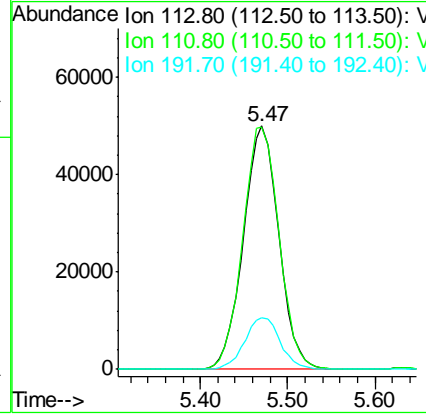
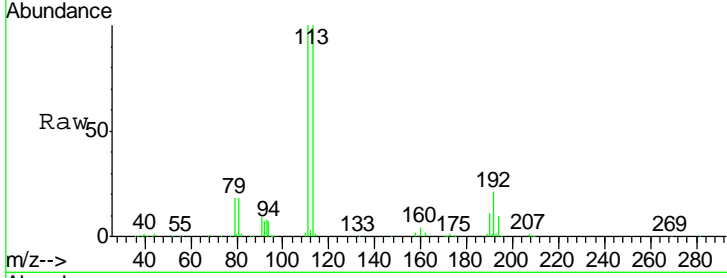




#35
 Dibromofluoromethane
 Concen: 45.927 ug/l
 RT: 5.47 min Scan# 719
 Delta R.T. -0.00 min
 Lab File: VX016063.D
 Acq: 05 May 2020 14:57

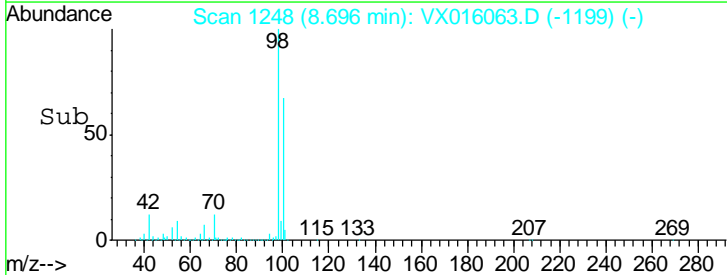
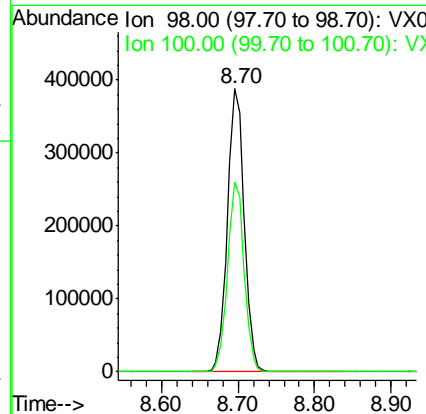
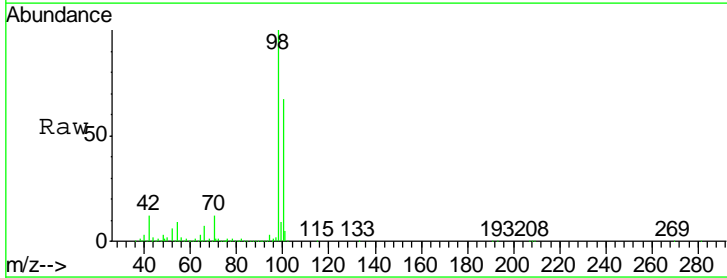
Instrument :
 MSVOA_X
 ClientSampleId :
 SA-PZ147-20200428

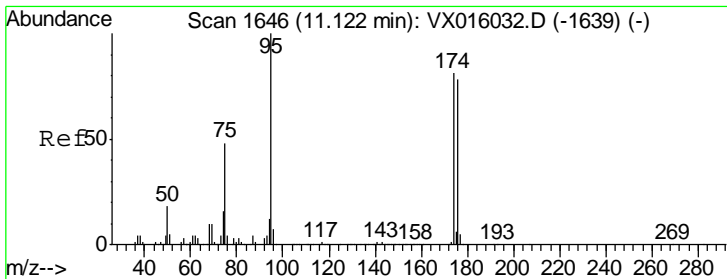
Tgt Ion	Resp	Lower	Upper
113	140252		
111	102.2	81.6	122.4
192	21.5	17.0	25.4



#50
 Toluene-d8
 Concen: 50.215 ug/l
 RT: 8.70 min Scan# 1248
 Delta R.T. -0.00 min
 Lab File: VX016063.D
 Acq: 05 May 2020 14:57

Tgt Ion	Resp	Lower	Upper
98	590852		
100	66.3	53.7	80.5

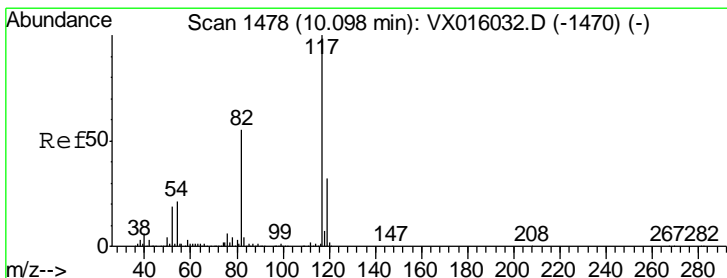
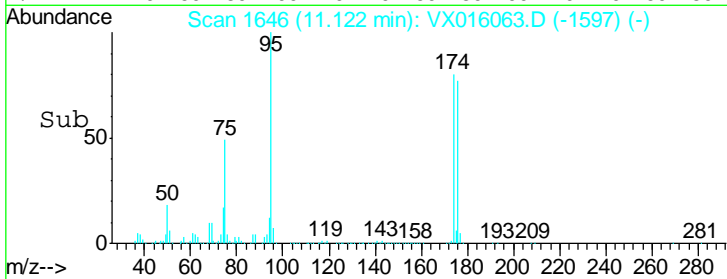
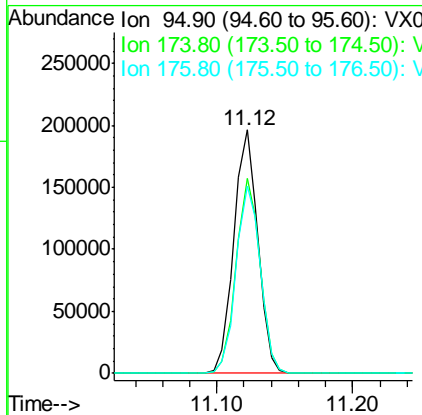
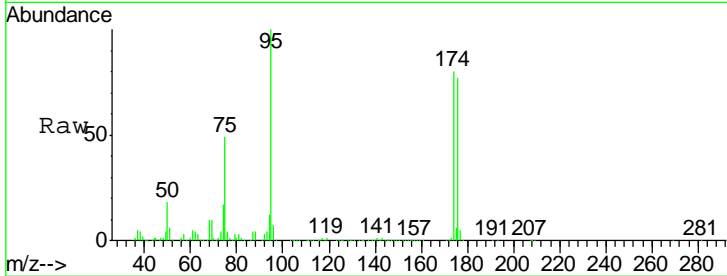




#62
 4-Bromofluorobenzene
 Concen: 53.881 ug/l
 RT: 11.12 min Scan# 1646
 Delta R.T. -0.00 min
 Lab File: VX016063.D
 Acq: 05 May 2020 14:57

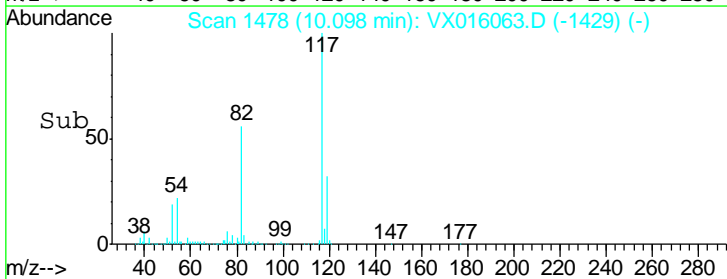
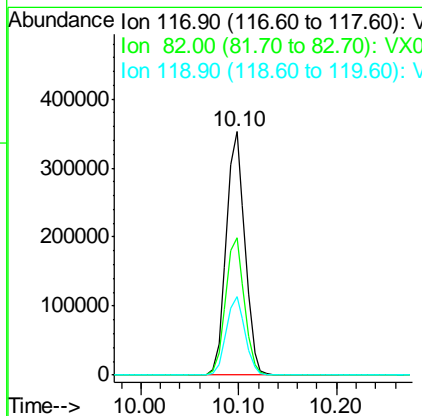
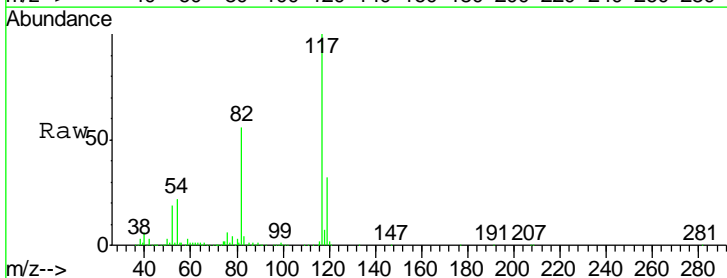
Instrument : MSVOA_X
 ClientSampled : SA-PZ147-20200428

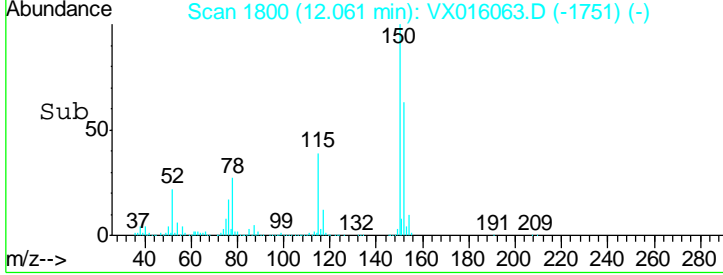
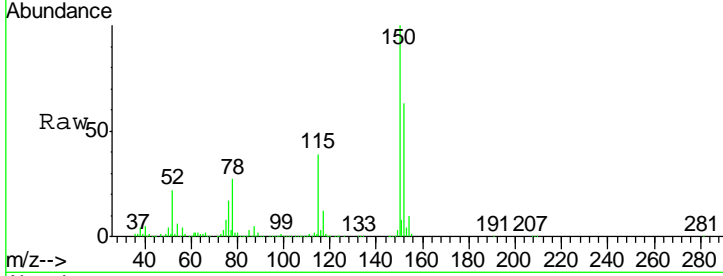
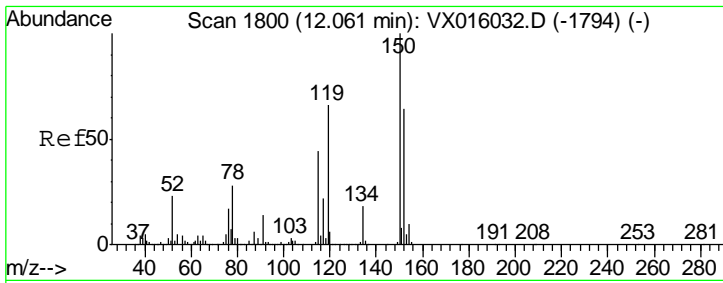
Tgt Ion	Resp	Lower	Upper
95	241141		
174	79.9	0.0	159.4
176	77.7	0.0	157.6



#63
 Chlorobenzene-d5
 Concen: 50.000 ug/l
 RT: 10.10 min Scan# 1478
 Delta R.T. -0.00 min
 Lab File: VX016063.D
 Acq: 05 May 2020 14:57

Tgt Ion	Resp	Lower	Upper
117	467759		
82	56.2	44.4	66.6
119	32.5	25.5	38.3





#72
 1,4-Dichlorobenzene-d4
 Concen: 50.000 ug/l
 RT: 12.06 min Scan# 1800
 Delta R.T. -0.00 min
 Lab File: VX016063.D
 Acq: 05 May 2020 14:57

Instrument : MSVOA_X
 ClientSampled : SA-PZ147-20200428

Tot Ion	Resp	Lower	Upper
152	100		
115	58.6	41.3	124.1
150	157.5	0.0	352.2

