

Data Path : Z:\VOASRV\HPCHEM1\MSVOA X\DATA\VX050619\  
 Data File : VX009358.D  
 Acq On : 06 May 2019 18:12  
 Operator : JC/SP  
 Sample : K2697-03  
 Misc : 5.0mL/MSVOA X/WATER  
 ALS Vial : 22 Sample Multiplier: 1

Instrument :  
 MSVOA\_X  
 ClientSampled :  
 MW-3-20190502

Quant Time: May 07 06:37:44 2019  
 Quant Method : Z:\VOASRV\HPCHEM1\MSVOA\_X\METHOD\82X042919W.M  
 Quant Title : SW846 8260  
 QLast Update : Sat May 04 07:18:36 2019  
 Response via : Initial Calibration

Internal Standards	R.T.	QIon	Response	Conc	Units	Dev(Min)
1) Pentafluorobenzene	5.67	168	179016	50.00	ug/l	0.00
34) 1,4-Difluorobenzene	6.86	114	287816	50.00	ug/l	0.00
63) Chlorobenzene-d5	10.12	117	252007	50.00	ug/l	0.00
72) 1,4-Dichlorobenzene-d4	12.08	152	109001	50.00	ug/l	0.00

## System Monitoring Compounds

33) 1,2-Dichloroethane-d4	6.06	65	118332	48.42	ug/l	0.00
Spiked Amount	50.000		Recovery	=	96.84%	
35) Dibromofluoromethane	5.50	113	88007	48.64	ug/l	0.00
Spiked Amount	50.000		Recovery	=	97.28%	
50) Toluene-d8	8.71	98	362061	49.57	ug/l	0.00
Spiked Amount	50.000		Recovery	=	99.14%	
62) 4-Bromofluorobenzene	11.13	95	120525	45.41	ug/l	0.00
Spiked Amount	50.000		Recovery	=	90.82%	

## Target Compounds

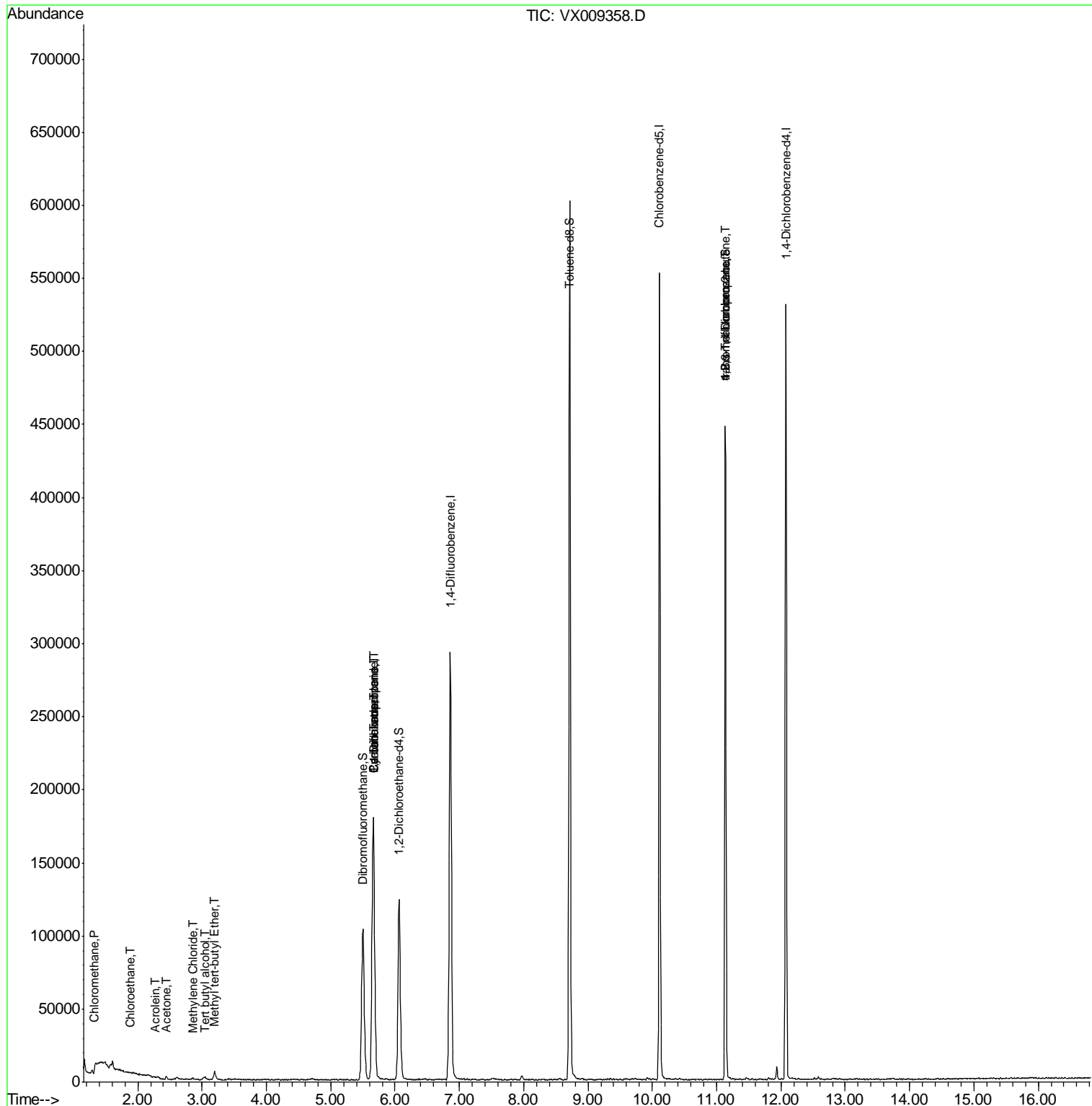
					Qvalue	
3) Chloromethane	1.32	50	512	0.227	ug/l #	59
6) Chloroethane	1.87	64	658	0.467	ug/l #	60
11) Tert butyl alcohol	3.05	59	1955	3.456	ug/l #	94
13) Acrolein	2.28	56	145	0.283	ug/l #	61
16) Acetone	2.45	43	1874	1.428	ug/l	98
19) Methyl tert-butyl Ether	3.20	73	5185	0.795	ug/l #	90
20) Methylene Chloride	2.86	84	475	0.224	ug/l #	82
28) Bromochloromethane	5.04	49	58	Below Cal	#	20
31) Cyclohexane	5.67	56	3883	1.075	ug/l #	1
36) 1,1-Dichloropropene	5.67	75	13266	4.960	ug/l #	51
38) Carbon Tetrachloride	5.67	117	16567	6.817	ug/l #	16
76) 1,2,3-Trichloropropane	11.13	75	61202	24.206	ug/l #	34
81) trans-1,4-Dichloro-2-buten	11.13	75	61202	61.933	ug/l #	10

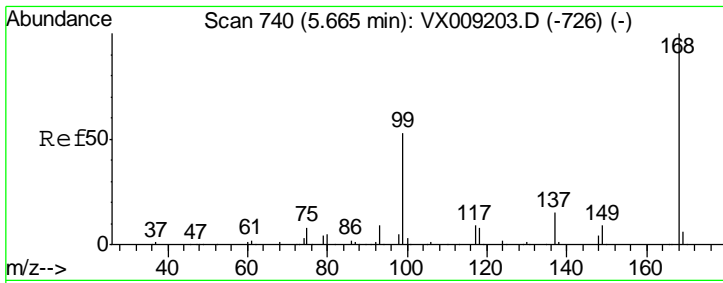
(#) = qualifier out of range (m) = manual integration (+) = signals summed

Data Path : Z:\VOASRV\HPCHEM1\MSVOA X\DATA\VX050619\  
 Data File : VX009358.D  
 Acq On : 06 May 2019 18:12  
 Operator : JC/SP  
 Sample : K2697-03  
 Misc : 5.0mL/MSVOA X/WATER  
 ALS Vial : 22 Sample Multiplier: 1

Instrument :  
 MSVOA\_X  
 ClientSampleID :  
 MW-3-20190502

Quant Time: May 07 06:37:44 2019  
 Quant Method : Z:\VOASRV\HPCHEM1\MSVOA\_X\METHOD\82X042919W.M  
 Quant Title : SW846 8260  
 QLast Update : Sat May 04 07:18:36 2019  
 Response via : Initial Calibration

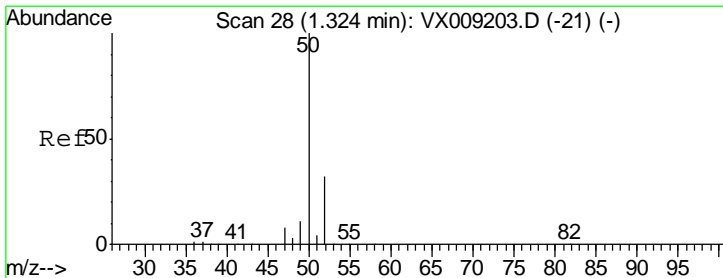
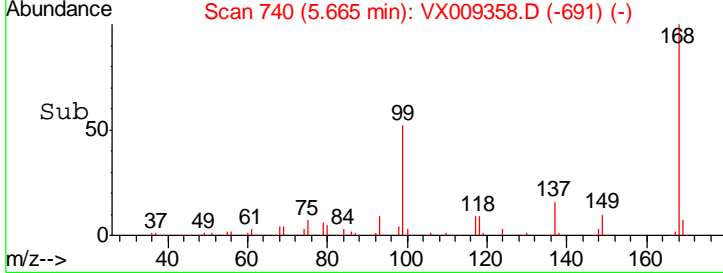
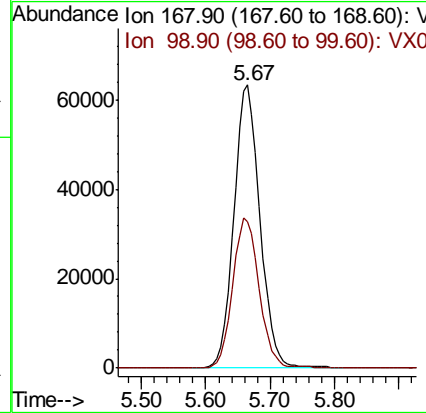
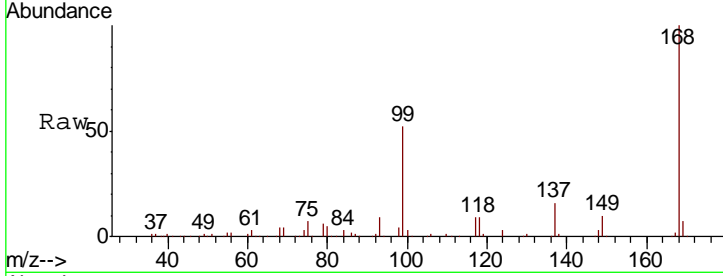




#1  
 Pentafluorobenzene  
 Concen: 50.000 ug/l  
 RT: 5.67 min Scan# 740  
 Delta R.T. -0.00 min  
 Lab File: VX009358.D  
 Acq: 06 May 2019 18:12

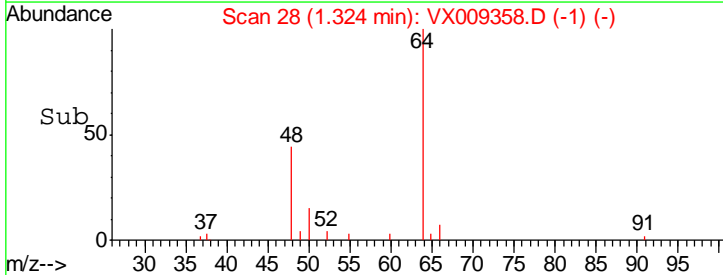
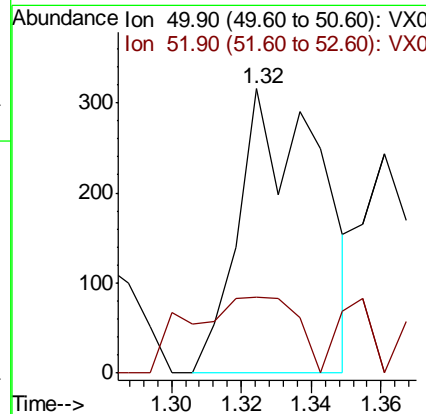
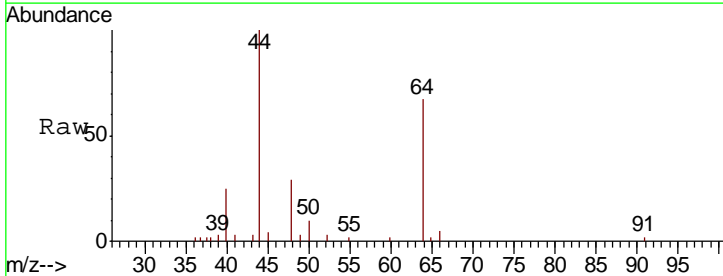
Instrument :  
 MSVOA\_X  
 ClientSampled :  
 MW-3-20190502

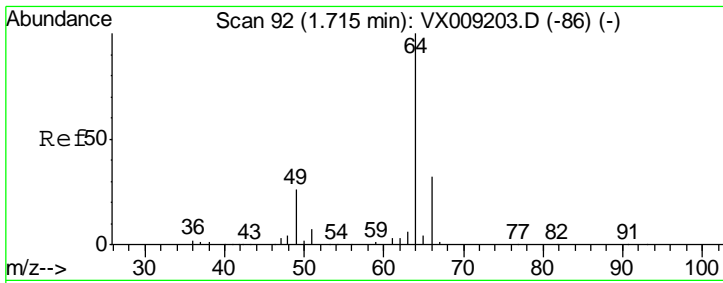
Tgt Ion	Resp	Lower	Upper
168	179016		
168	100		
99	51.9	42.3	63.5



#3  
 Chloromethane  
 Concen: 0.227 ug/l  
 RT: 1.32 min Scan# 28  
 Delta R.T. -0.00 min  
 Lab File: VX009358.D  
 Acq: 06 May 2019 18:12

Tgt Ion	Resp	Lower	Upper
50	512		
50	100		
52	9.5	25.9	38.9#

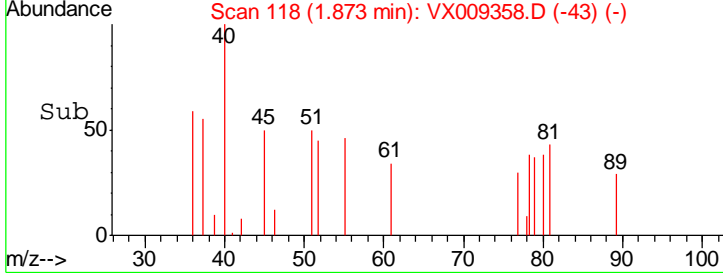
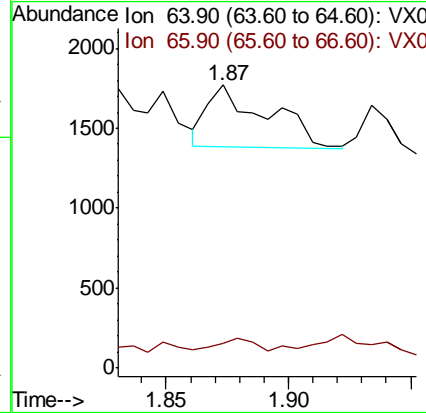
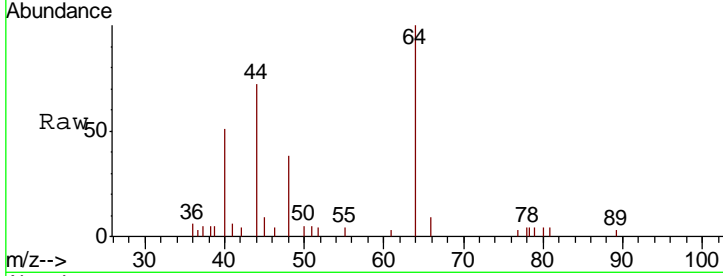




#6  
 Chloroethane  
 Concen: 0.467 ug/l  
 RT: 1.87 min Scan# 118  
 Delta R.T. 0.16 min  
 Lab File: VX009358.D  
 Acq: 06 May 2019 18:12

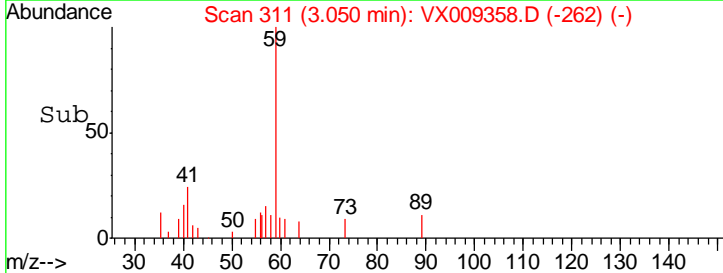
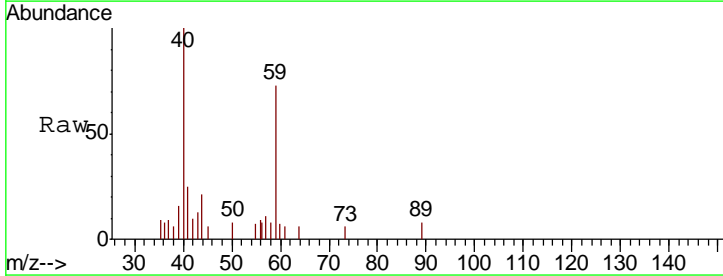
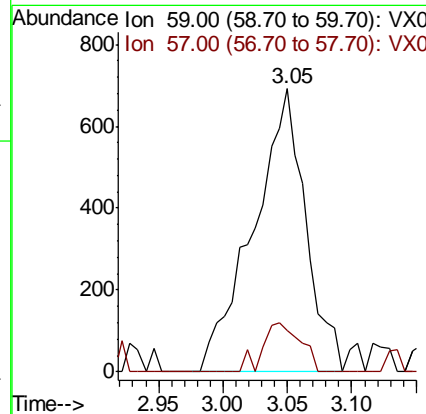
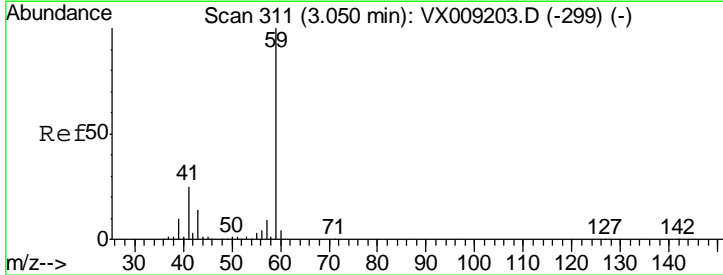
Instrument : MSVOA\_X  
 ClientSampled : MW-3-20190502

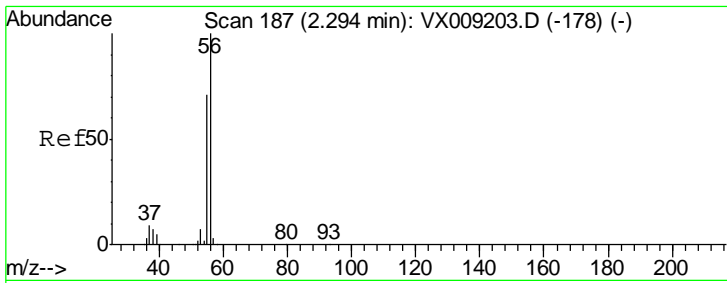
Tgt Ion: 64 Resp: 658  
 Ion Ratio Lower Upper  
 64 100  
 66 9.3 25.3 37.9#



#11  
 Tert butyl alcohol  
 Concen: 3.456 ug/l  
 RT: 3.05 min Scan# 311  
 Delta R.T. -0.00 min  
 Lab File: VX009358.D  
 Acq: 06 May 2019 18:12

Tgt Ion: 59 Resp: 1955  
 Ion Ratio Lower Upper  
 59 100  
 57 12.5 8.2 12.2#

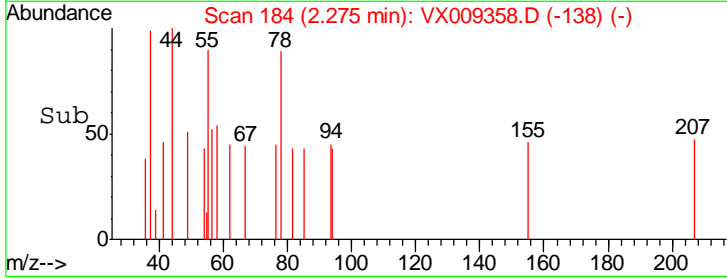
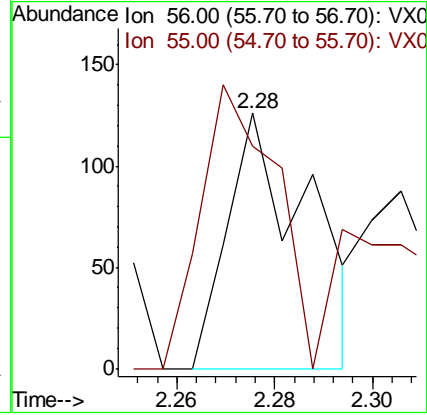
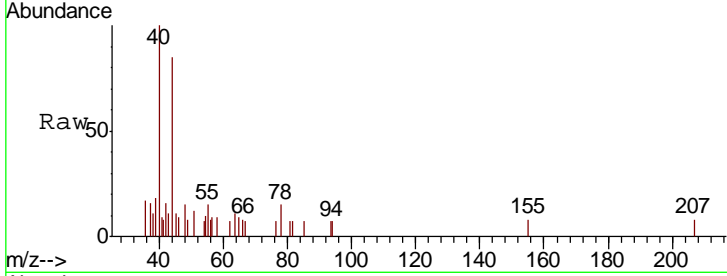




#13  
 Acrolein  
 Concen: 0.283 ug/l  
 RT: 2.28 min Scan# 184  
 Delta R.T. -0.02 min  
 Lab File: VX009358.D  
 Acq: 06 May 2019 18:12

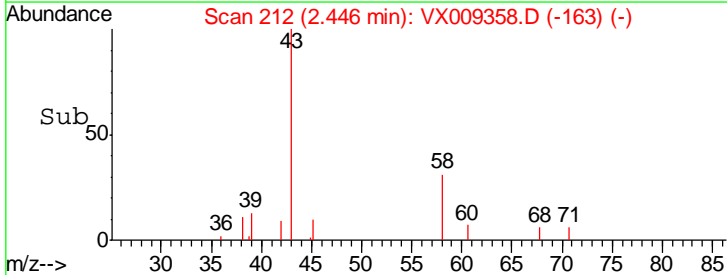
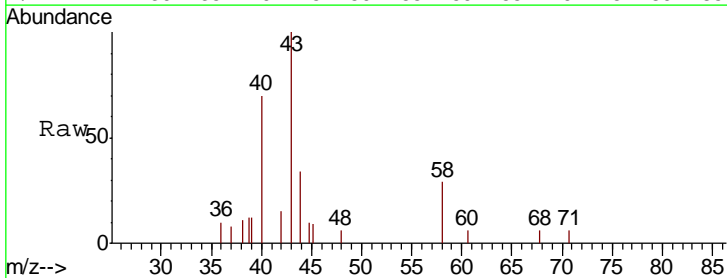
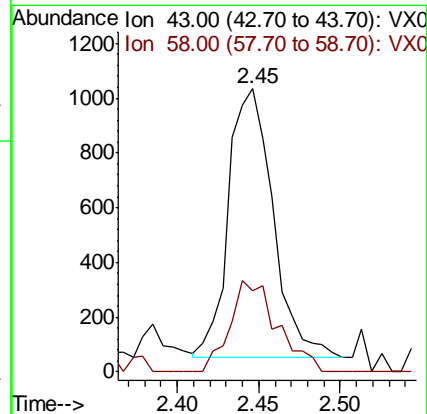
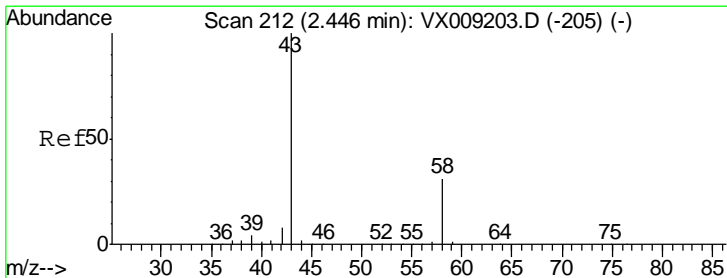
Instrument :  
 MSVOA\_X  
 ClientSampled :  
 MW-3-20190502

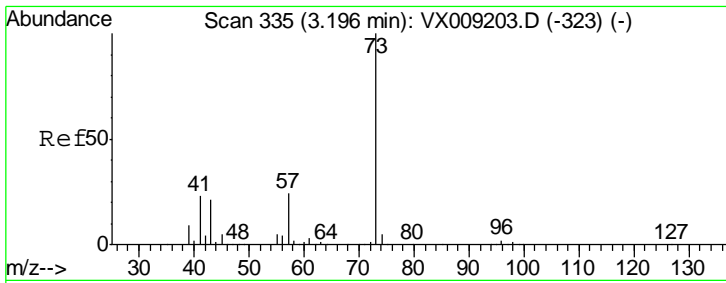
Tgt Ion: 56 Resp: 145  
 Ion Ratio Lower Upper  
 56 100  
 55 102.8 56.6 85.0#



#16  
 Acetone  
 Concen: 1.428 ug/l  
 RT: 2.45 min Scan# 212  
 Delta R.T. -0.00 min  
 Lab File: VX009358.D  
 Acq: 06 May 2019 18:12

Tgt Ion: 43 Resp: 1874  
 Ion Ratio Lower Upper  
 43 100  
 58 30.0 24.9 37.3

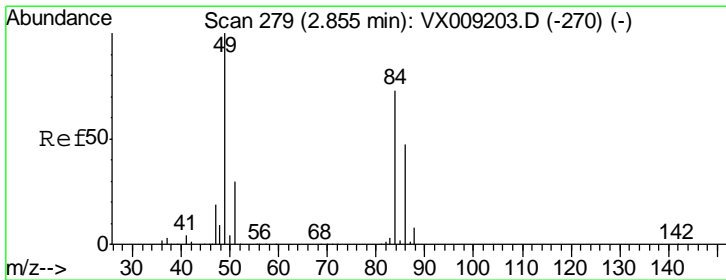
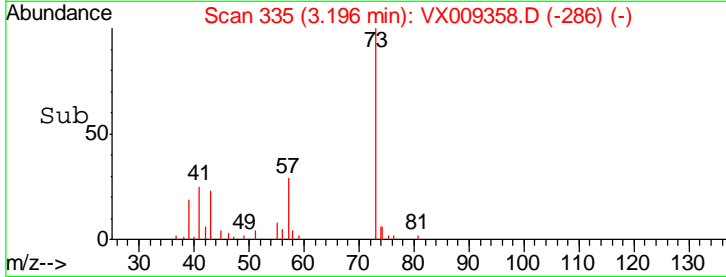
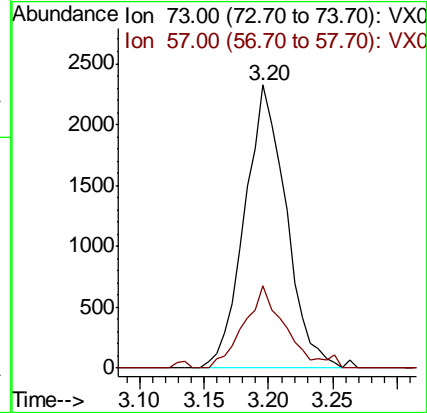
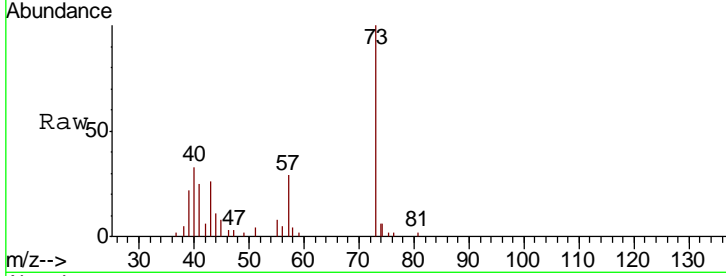




#19  
Methyl tert-butyl Ether  
Concen: 0.795 ug/l  
RT: 3.20 min Scan# 335  
Delta R.T. -0.00 min  
Lab File: VX009358.D  
Acq: 06 May 2019 18:12

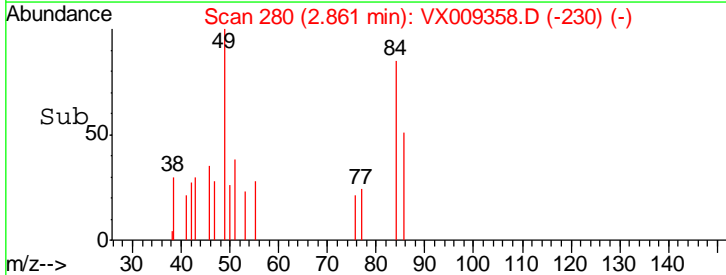
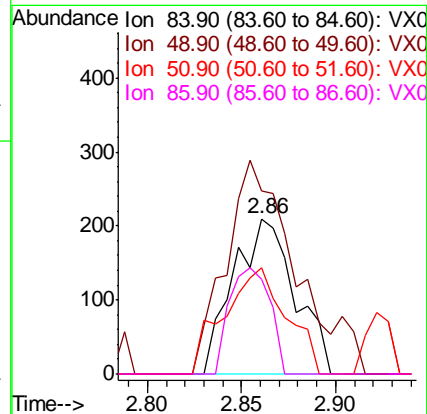
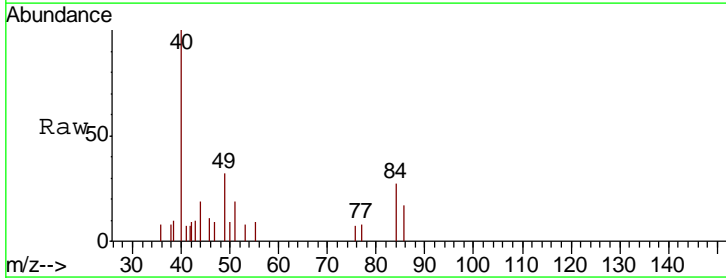
Instrument :  
MSVOA\_X  
ClientSampled :  
MW-3-20190502

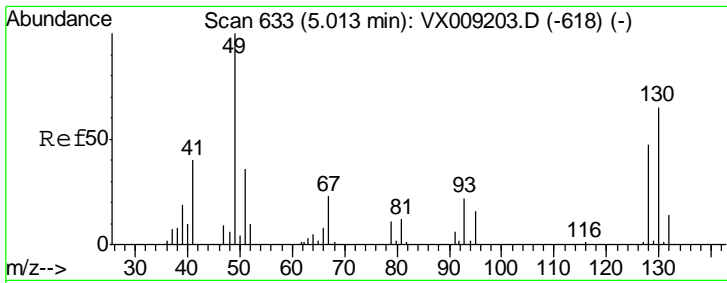
Tgt Ion: 73 Resp: 5185  
Ion Ratio Lower Upper  
73 100  
57 29.3 19.3 28.9#



#20  
Methylene Chloride  
Concen: 0.224 ug/l  
RT: 2.86 min Scan# 280  
Delta R.T. 0.01 min  
Lab File: VX009358.D  
Acq: 06 May 2019 18:12

Tgt Ion: 84 Resp: 475  
Ion Ratio Lower Upper  
84 100  
49 118.1 109.9 164.9  
51 68.6 32.7 49.1#  
86 60.5 52.0 78.0

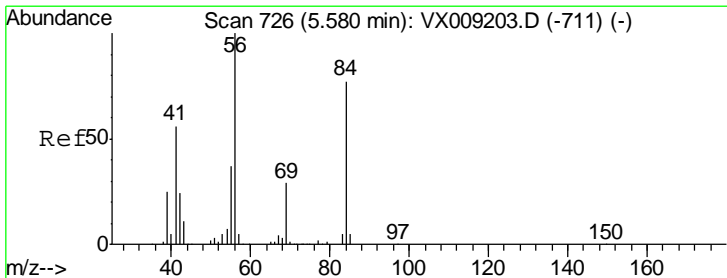
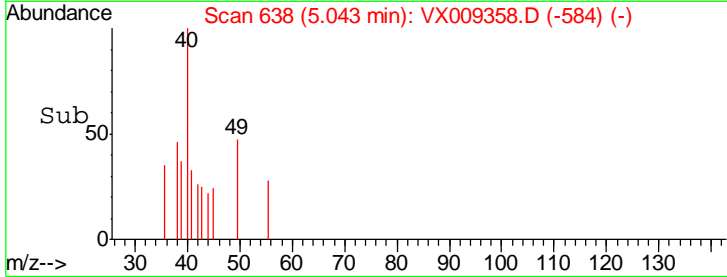
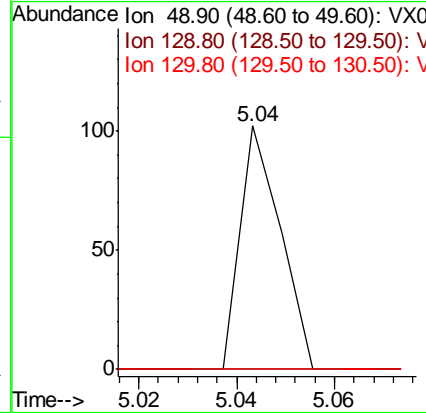
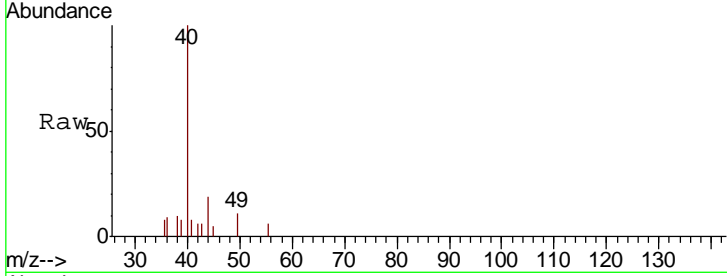




#28  
 Bromochloromethane  
 Concen: Below Cal  
 RT: 5.04 min Scan# 638  
 Delta R.T. 0.03 min  
 Lab File: VX009358.D  
 Acq: 06 May 2019 18:12

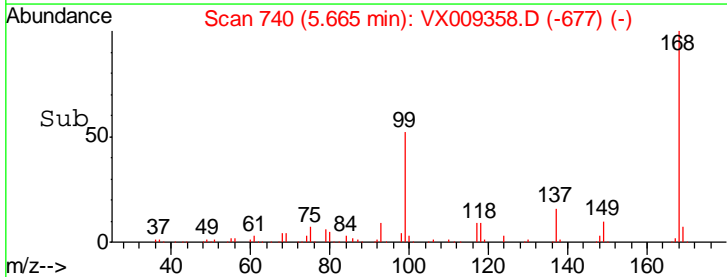
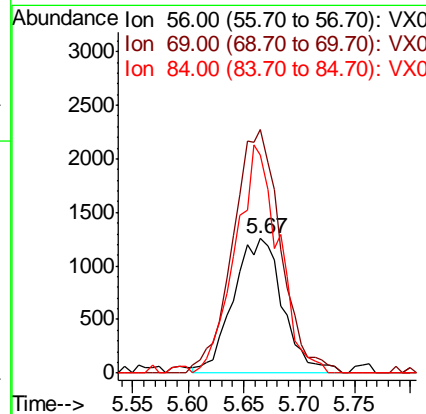
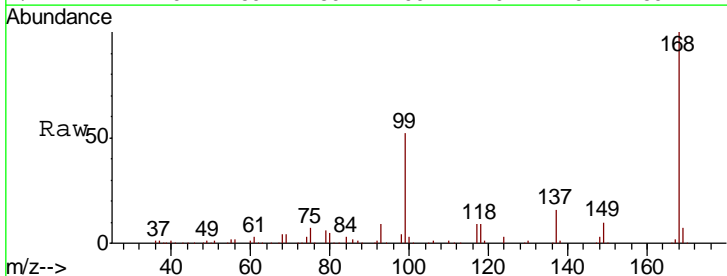
Instrument :  
 MSVOA\_X  
 ClientSampled :  
 MW-3-20190502

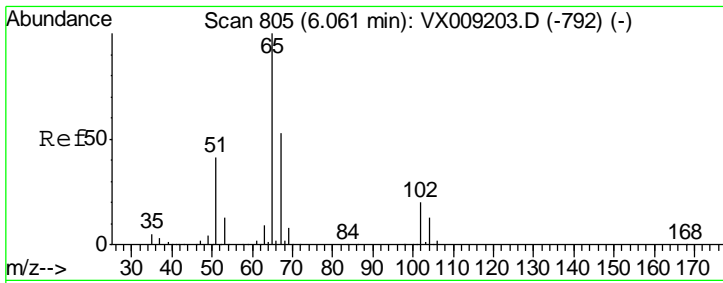
Tgt Ion	Resp	Lower	Upper
49	100		
129	0.0	0.0	3.8
130	0.0	51.2	76.8#



#31  
 Cyclohexane  
 Concen: 1.075 ug/l  
 RT: 5.67 min Scan# 740  
 Delta R.T. 0.09 min  
 Lab File: VX009358.D  
 Acq: 06 May 2019 18:12

Tgt Ion	Resp	Lower	Upper
56	100		
69	181.3	23.4	35.0#
84	162.3	61.9	92.9#

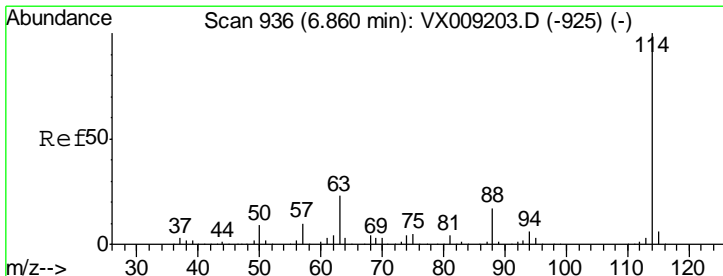
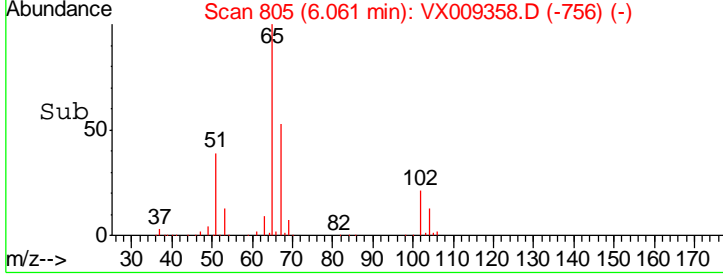
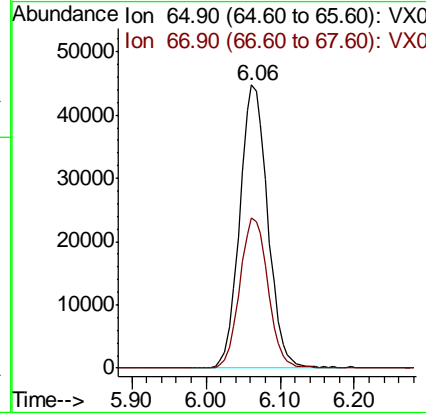
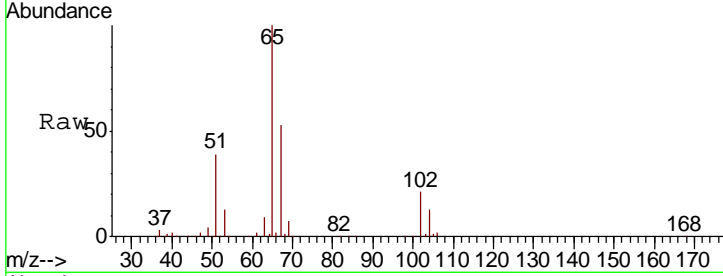




#33  
 1,2-Dichloroethane-d4  
 Concen: 48.422 ug/l  
 RT: 6.06 min Scan# 805  
 Delta R.T. -0.00 min  
 Lab File: VX009358.D  
 Acq: 06 May 2019 18:12

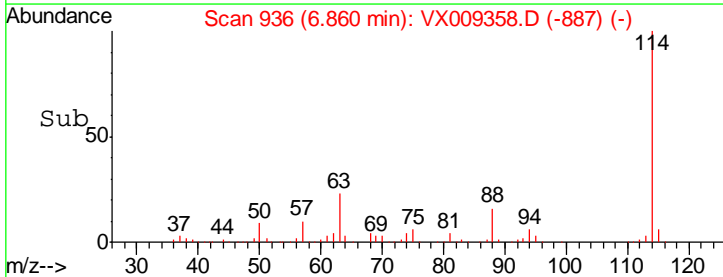
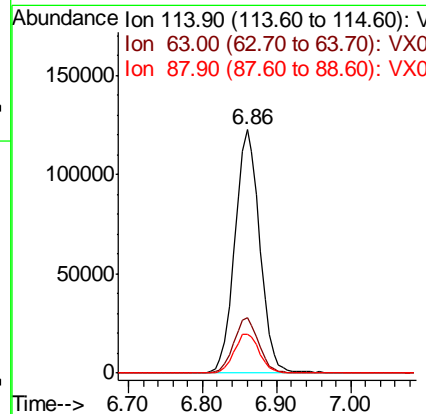
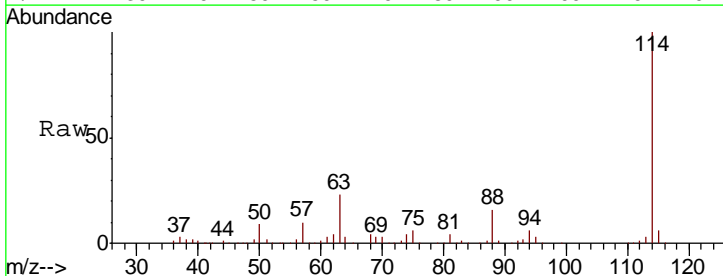
Instrument : MSVOA\_X  
 ClientSampleId : MW-3-20190502

Tgt Ion	Resp	Lower	Upper
65	118332		
67	53.5	0.0	106.6

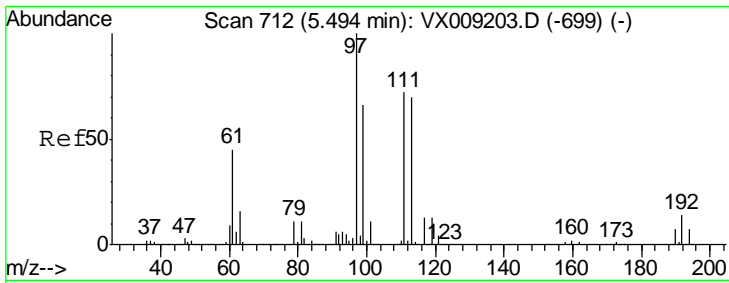


#34  
 1,4-Difluorobenzene  
 Concen: 50.000 ug/l  
 RT: 6.86 min Scan# 936  
 Delta R.T. -0.00 min  
 Lab File: VX009358.D  
 Acq: 06 May 2019 18:12

Tgt Ion	Resp	Lower	Upper
114	287816		
63	22.8	0.0	45.6
88	16.1	0.0	33.2



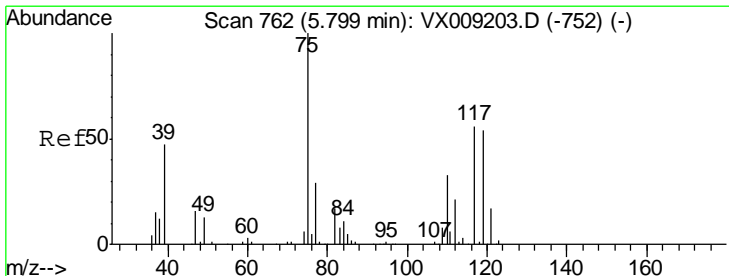
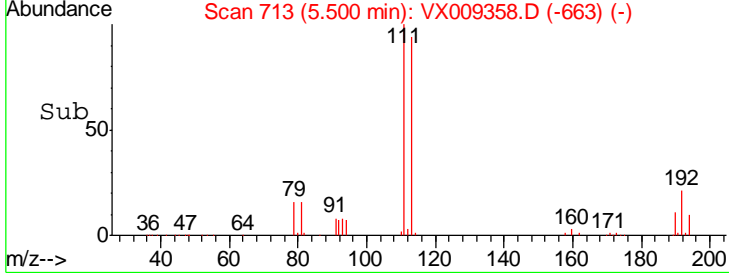
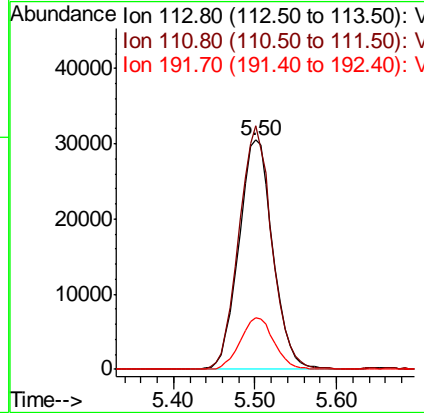
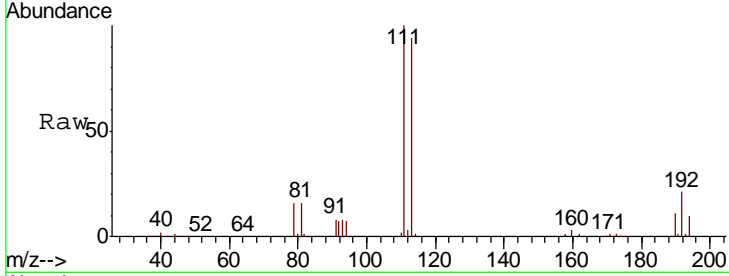




#35  
 Dibromofluoromethane  
 Concen: 48.641 ug/l  
 RT: 5.50 min Scan# 713  
 Delta R.T. 0.01 min  
 Lab File: VX009358.D  
 Acq: 06 May 2019 18:12

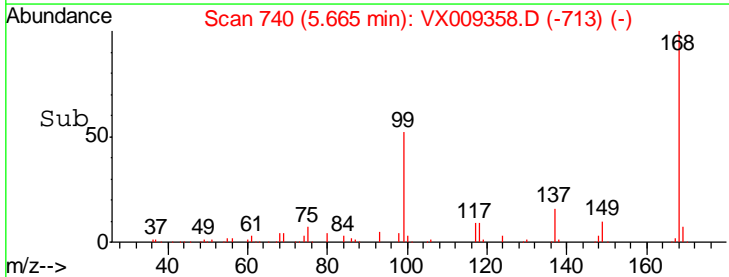
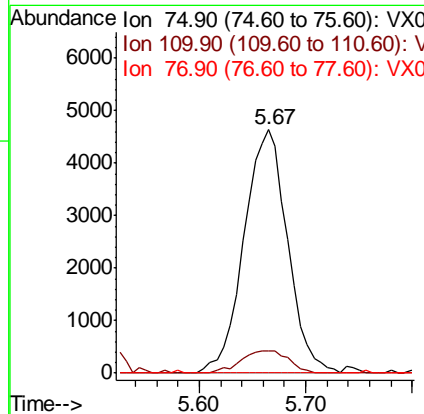
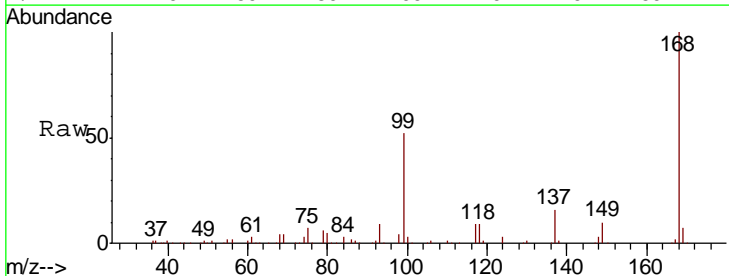
**Instrument :**  
 MSVOA\_X  
**ClientSampled :**  
 MW-3-20190502

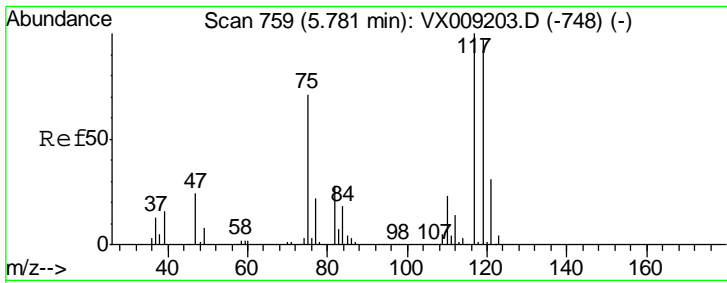
Tgt Ion	Resp	Lower	Upper
113	88007		
113	100		
111	103.2	82.8	124.2
192	22.5	17.0	25.6



#36  
 1,1-Dichloropropene  
 Concen: 4.960 ug/l  
 RT: 5.67 min Scan# 740  
 Delta R.T. -0.13 min  
 Lab File: VX009358.D  
 Acq: 06 May 2019 18:12

Tgt Ion	Resp	Lower	Upper
75	13266		
75	100		
110	10.1	16.9	50.6#
77	0.0	24.8	37.2#

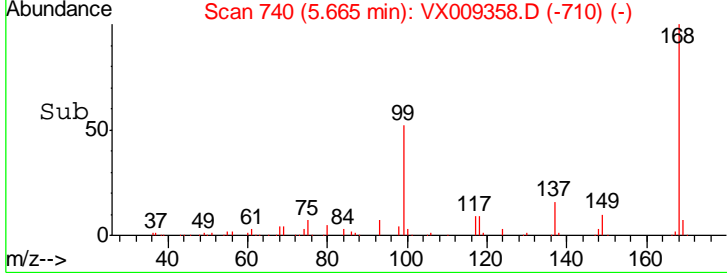
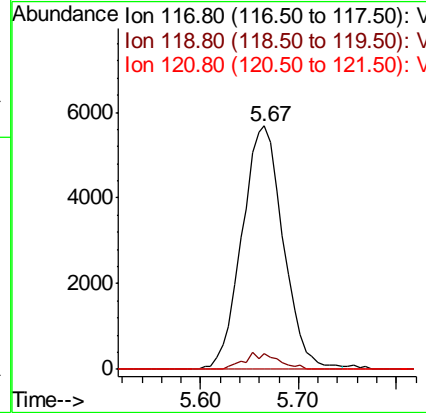
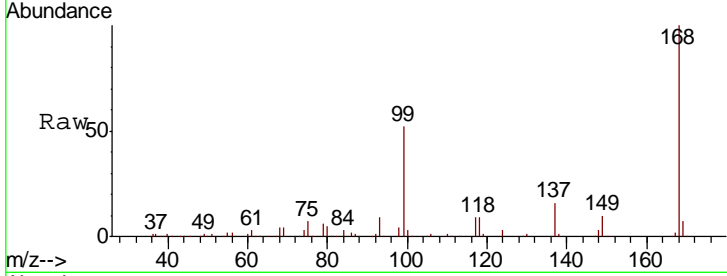




#38  
 Carbon Tetrachloride  
 Concen: 6.817 ug/l  
 RT: 5.67 min Scan# 740  
 Delta R.T. -0.12 min  
 Lab File: VX009358.D  
 Acq: 06 May 2019 18:12

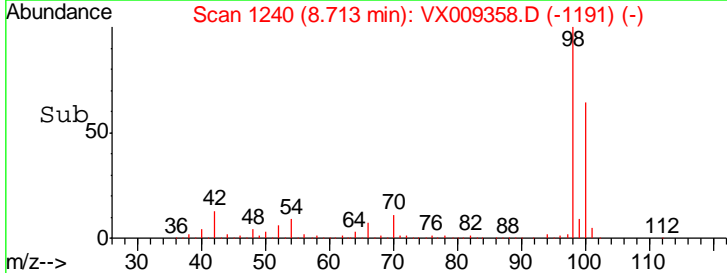
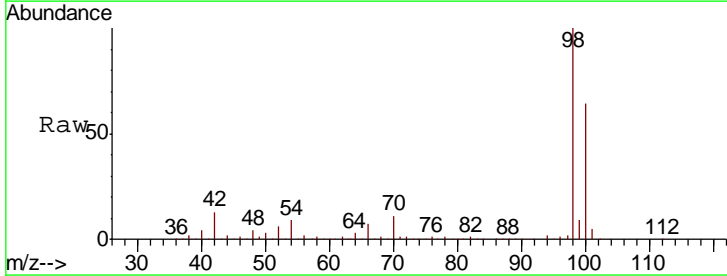
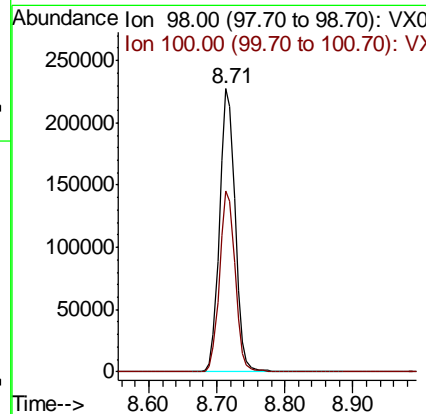
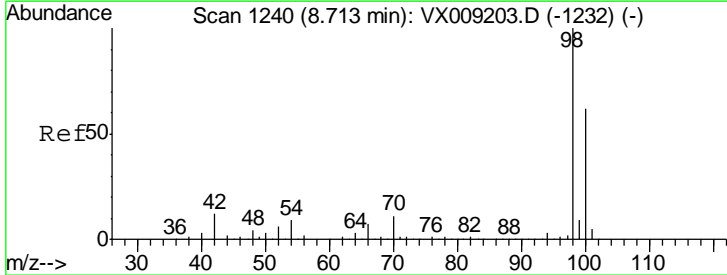
**Instrument :**  
 MSVOA\_X  
**ClientSampled :**  
 MW-3-20190502

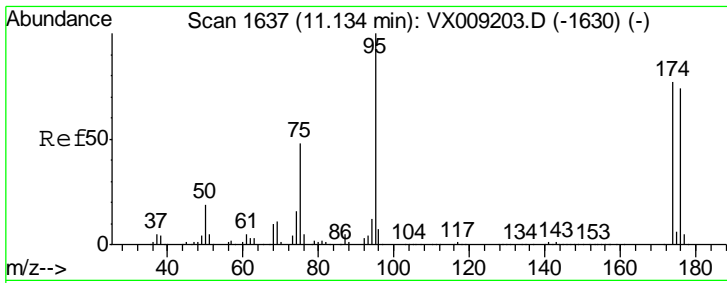
Tgt Ion	Resp	Lower	Upper
117	16567		
117	100		
119	6.2	77.5	116.3#
121	0.0	24.7	37.1#



#50  
 Toluene-d8  
 Concen: 49.565 ug/l  
 RT: 8.71 min Scan# 1240  
 Delta R.T. -0.00 min  
 Lab File: VX009358.D  
 Acq: 06 May 2019 18:12

Tgt Ion	Resp	Lower	Upper
98	362061		
98	100		
100	63.9	51.2	76.8

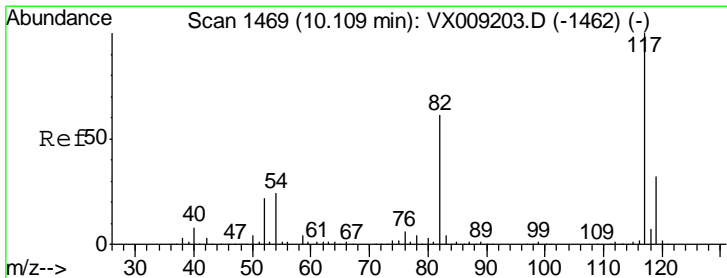
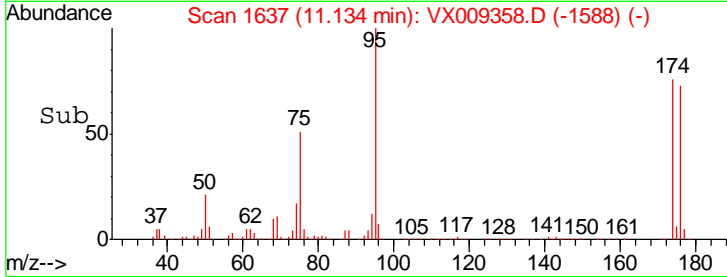
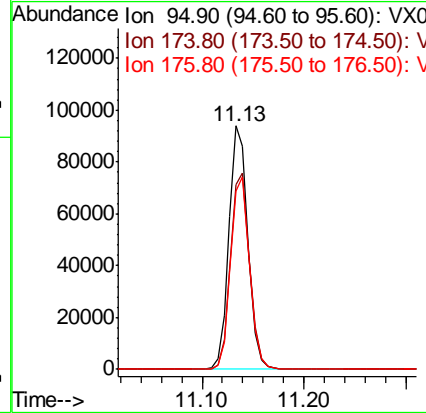
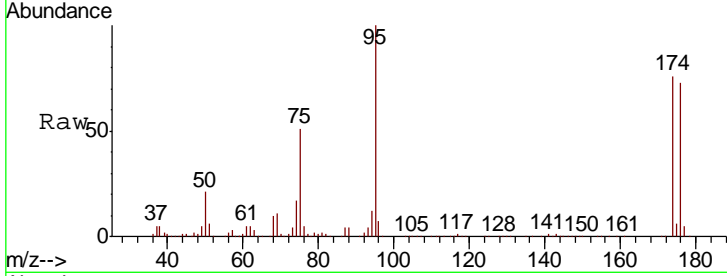




#62  
 4-Bromofluorobenzene  
 Concen: 45.408 ug/l  
 RT: 11.13 min Scan# 1637  
 Delta R.T. -0.00 min  
 Lab File: VX009358.D  
 Acq: 06 May 2019 18:12

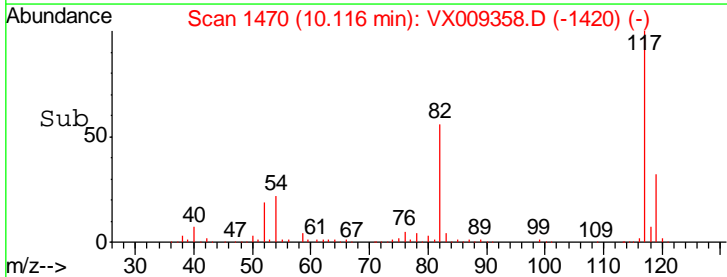
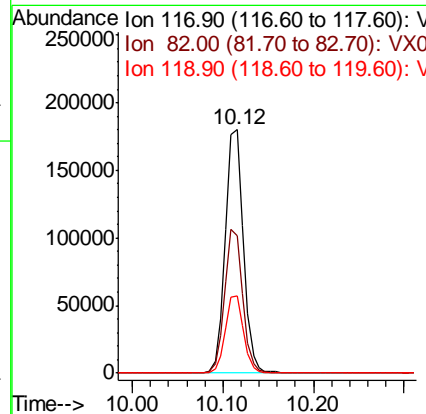
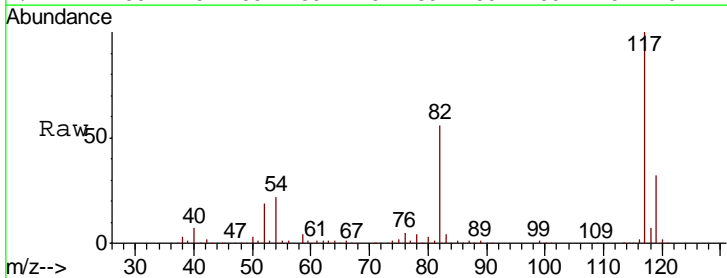
Instrument :  
 MSVOA\_X  
 ClientSampled :  
 MW-3-20190502

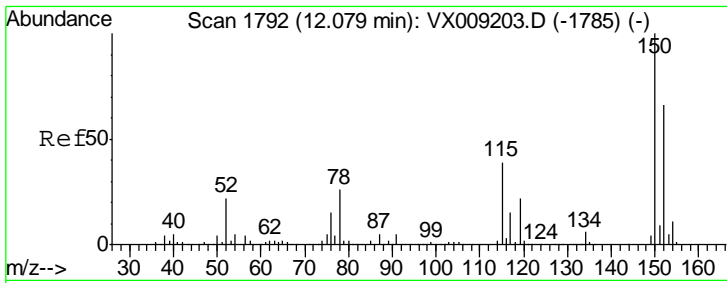
Tgt Ion	Resp	Lower	Upper
95	120525		
174	80.9	0.0	161.6
176	78.4	0.0	159.2



#63  
 Chlorobenzene-d5  
 Concen: 50.000 ug/l  
 RT: 10.12 min Scan# 1470  
 Delta R.T. 0.01 min  
 Lab File: VX009358.D  
 Acq: 06 May 2019 18:12

Tgt Ion	Resp	Lower	Upper
117	252007		
82	56.4	48.8	73.2
119	31.7	25.8	38.6

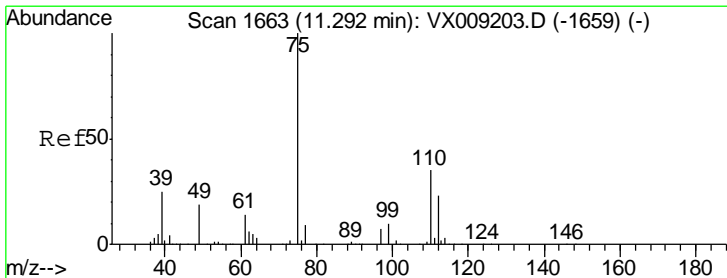
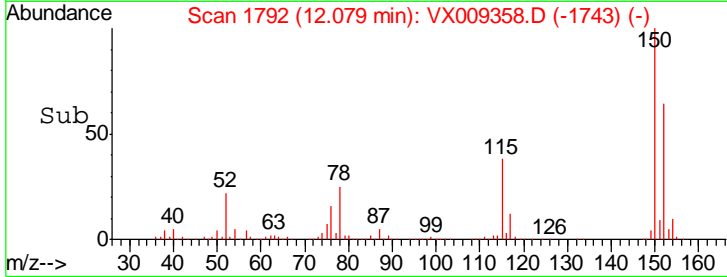
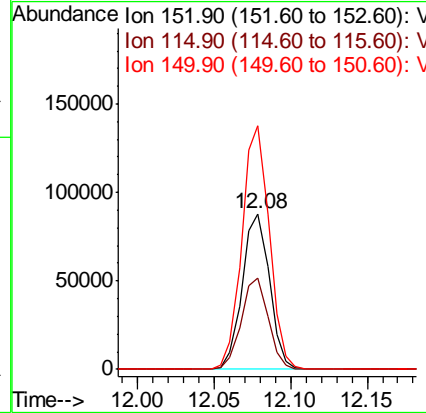
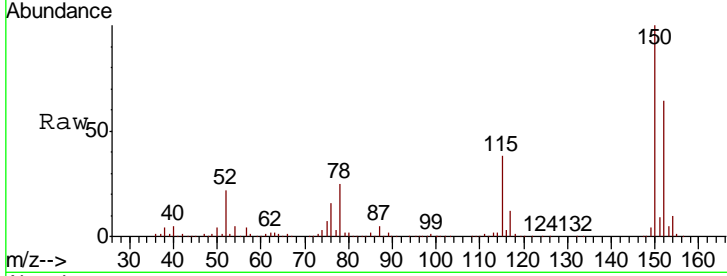




#72  
 1,4-Dichlorobenzene-d4  
 Concen: 50.000 ug/l  
 RT: 12.08 min Scan# 1792  
 Delta R.T. -0.00 min  
 Lab File: VX009358.D  
 Acq: 06 May 2019 18:12

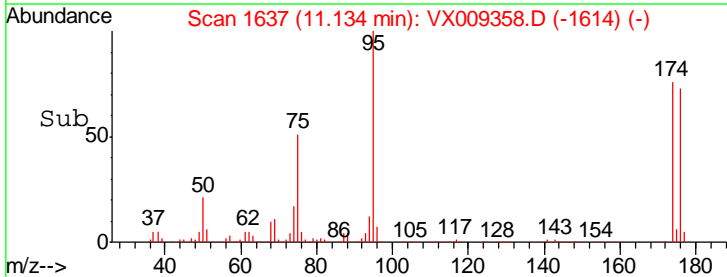
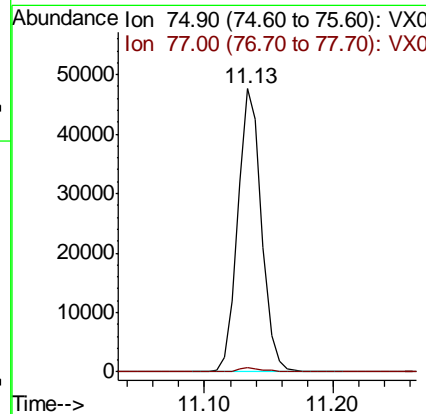
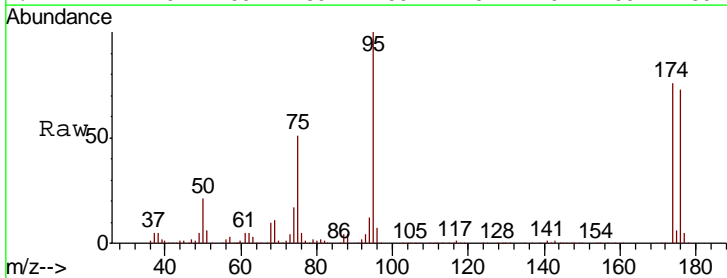
Instrument :  
 MSVOA\_X  
 ClientSampled :  
 MW-3-20190502

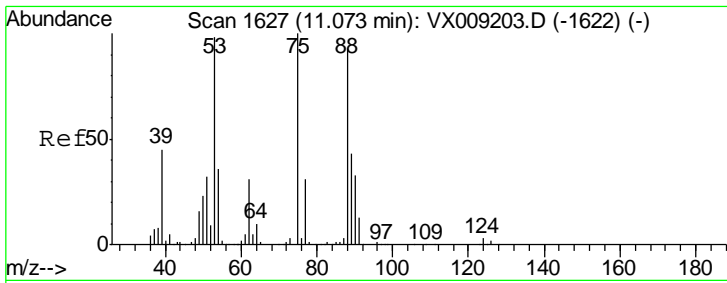
Tgt Ion	Resp	Lower	Upper
152	109001		
115	58.5	41.2	123.6
150	156.7	0.0	346.4



#76  
 1,2,3-Trichloropropane  
 Concen: 24.206 ug/l  
 RT: 11.13 min Scan# 1637  
 Delta R.T. -0.16 min  
 Lab File: VX009358.D  
 Acq: 06 May 2019 18:12

Tgt Ion	Resp	Lower	Upper
75	61202		
75	100		
77	1.5	22.1	66.1#

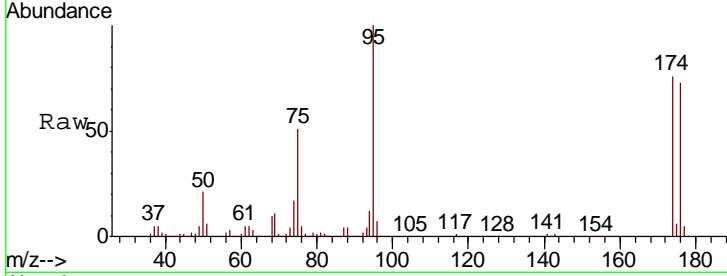




#81  
 trans-1,4-Dichloro-2-butene  
 Concen: 61.933 ug/l  
 RT: 11.13 min Scan# 1637  
 Delta R.T. 0.06 min  
 Lab File: VX009358.D  
 Acq: 06 May 2019 18:12

Instrument :  
 MSVOA\_X  
 ClientSampleId :  
 MW-3-20190502

Tot Ion	Resp	Lower	Upper
75	61202		
75	100		
53	0.1	79.0	118.6#
89	0.0	34.7	52.1#



Abundance Ion 74.90 (74.60 to 75.60): VX0  
 Ion 53.00 (52.70 to 53.70): VX0  
 Ion 88.90 (88.60 to 89.60): VX0

