

Data Path : Z:\VOASRV\HPCHEM1\MSVOA X\DATA\VX050719\
 Data File : VX009373.D
 Acq On : 07 May 2019 12:48
 Operator : JC/SP
 Sample : K2628-02
 Misc : 5.0mL/MSVOA X/WATER
 ALS Vial : 8 Sample Multiplier: 1

Instrument :
 MSVOA_X
 ClientSampleId :
 002M-35TH-AVE(MAY)

Integration Parameters: RTEINT3.P
 Integrator: RTE
 Smoothing : OFF Filtering: 5
 Sampling : 1 Min Area: 0 % of largest Peak
 Start Thrs: 0.2 Max Peaks: 100
 Stop Thrs : 0 Peak Location: TOP

If leading or trailing edge < 100 prefer < Baseline drop else tangent >
 Peak separation: 5

Method : Z:\VOASRV\HPCHEM1\MSVOA X\METHOD\624X050119W.M
 Title : METHOD 624 VOLATILE ORGANIC ANALYSIS

Signal : TIC

peak #	R.T. min	first scan	max scan	last scan	PK TY	peak height	corr. area	corr. % max.	% of total
1	2.440	202	211	229	rBV	1212591	2064281	100.00%	36.814%
2	2.611	229	239	256	rVV	391713	722724	35.01%	12.889%
3	4.690	570	580	588	rBV3	7509	24351	1.18%	0.434%
4	5.013	623	633	651	rBV	72886	224101	10.86%	3.997%
5	6.061	795	805	819	rBV2	80676	215661	10.45%	3.846%
6	6.860	925	936	948	rBV	179454	423241	20.50%	7.548%
7	8.713	1233	1240	1247	rVV	376024	575976	27.90%	10.272%
8	8.780	1247	1251	1260	rVB	67522	109239	5.29%	1.948%
9	10.109	1464	1469	1484	rVB	345053	473950	22.96%	8.452%
10	11.134	1629	1637	1647	rVB	276211	359485	17.41%	6.411%
11	11.749	1733	1738	1743	rVB2	19010	25952	1.26%	0.463%
12	11.810	1743	1748	1757	rVB3	20413	40135	1.94%	0.716%
13	11.938	1765	1769	1772	rBV	23202	34837	1.69%	0.621%
14	12.146	1798	1803	1807	rBV3	30954	55974	2.71%	0.998%
15	12.822	1909	1914	1920	rBV	19827	25518	1.24%	0.455%
16	13.389	2003	2007	2012	rVB	63470	78722	3.81%	1.404%
17	14.176	2125	2136	2149	rBV2	35884	125769	6.09%	2.243%
18	14.487	2183	2187	2193	rBV3	14724	27458	1.33%	0.490%

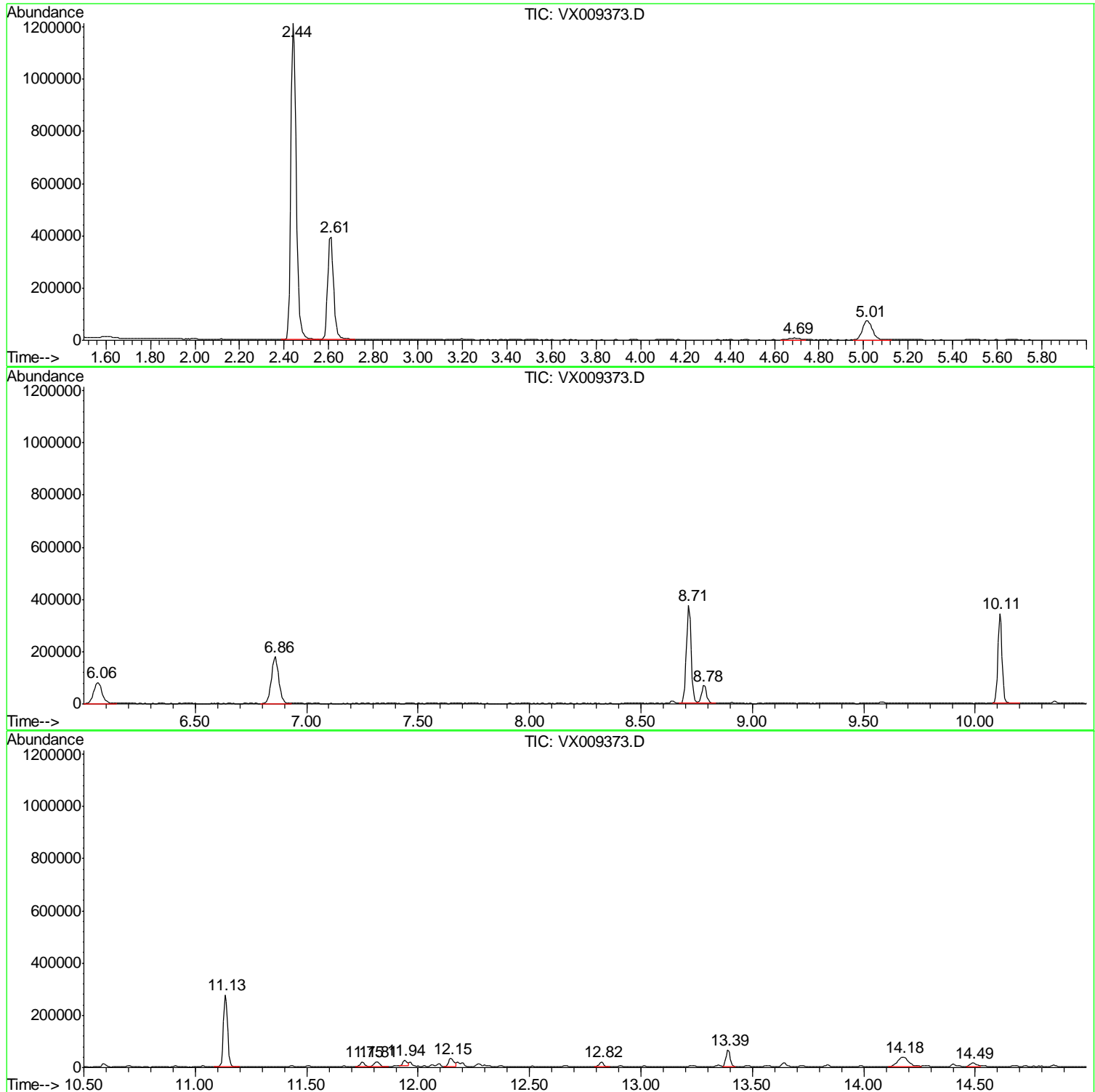
Sum of corrected areas: 5607374

Data Path : Z:\VOASRV\HPCHEM1\MSVOA X\DATA\VX050719\
Data File : VX009373.D
Acq On : 07 May 2019 12:48
Operator : JC/SP
Sample : K2628-02
Misc : 5.0mL/MSVOA X/WATER
ALS Vial : 8 Sample Multiplier: 1

Instrument :
MSVOA_X
ClientSampleId :
002M-35TH-AVE(MAY)

Quant Method : Z:\VOASRV\HPCHEM1\MSVOA X\METHOD\624X050119W.M
Quant Title : METHOD 624 VOLATILE ORGANIC ANALYSIS

TIC Library : C:\DATABASE\NIST02.L
TIC Integration Parameters: LSCINT.P



Data Path : Z:\VOASRV\HPCHEM1\MSVOA X\DATA\VX050719\
 Data File : VX009373.D
 Acq On : 07 May 2019 12:48
 Operator : JC/SP
 Sample : K2628-02
 Misc : 5.0mL/MSVOA X/WATER
 ALS Vial : 8 Sample Multiplier: 1

Instrument :
 MSVOA_X
 ClientSampleId :
 002M-35TH-AVE(MAY)

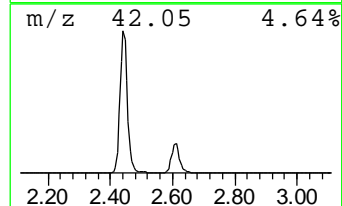
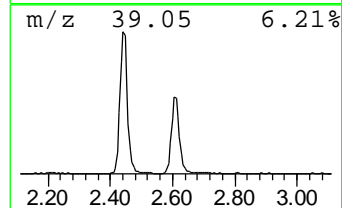
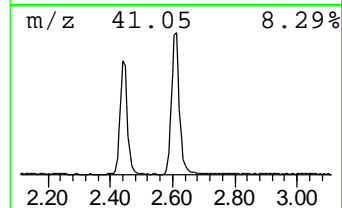
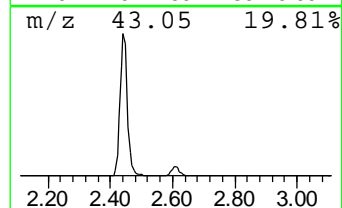
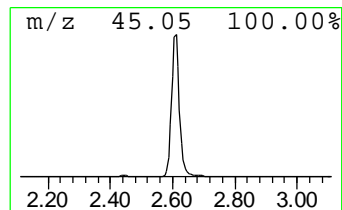
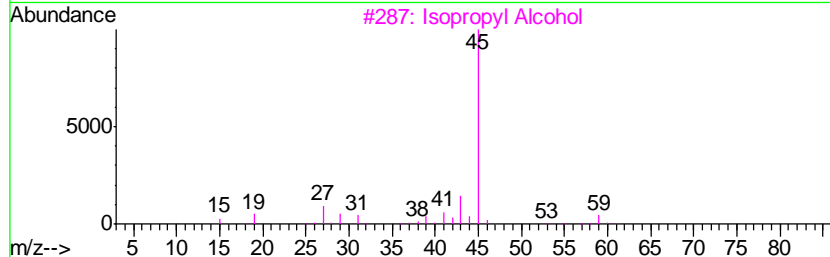
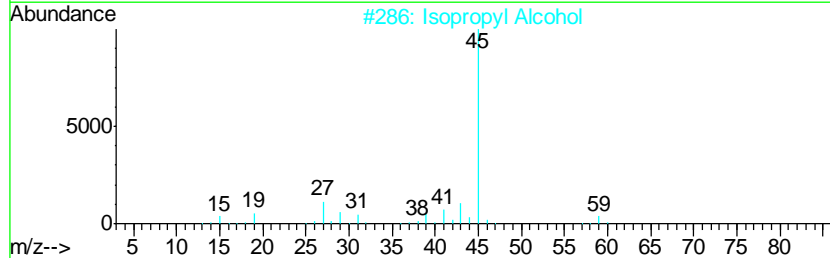
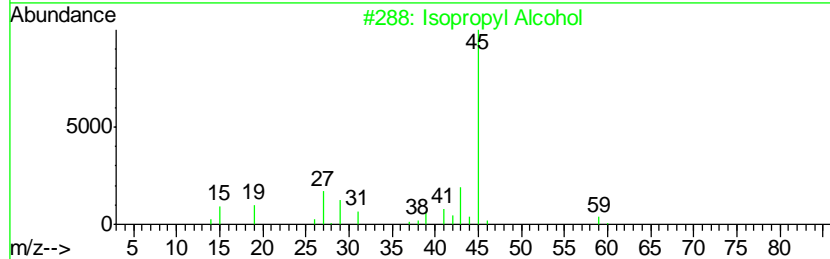
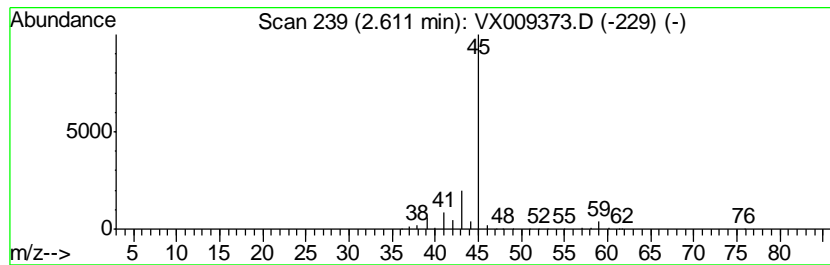
Quant Method : Z:\VOASRV\HPCHEM1\MSVOA X\METHOD\624X050119W.M
 Quant Title : METHOD 624 VOLATILE ORGANIC ANALYSIS

TIC Library : C:\DATABASE\NIST02.L
 TIC Integration Parameters: LSCINT.P

 Peak Number 1 Isopropyl Alcohol Concentration Rank 1

R.T.	EstConc	Area	Relative to ISTD	R.T.
2.61	96.75 ug/l	722724	Bromochloromethane	5.01

Hit#	of	Tentative ID	MW	MolForm	CAS#	Qual
1	5	Isopropyl Alcohol	60	C3H8O	000067-63-0	78
2		Isopropyl Alcohol	60	C3H8O	000067-63-0	78
3		Isopropyl Alcohol	60	C3H8O	000067-63-0	64
4		Hydrazine, 1,2-dimethyl-	60	C2H8N2	000540-73-8	9
5		Hydrazine, 1,2-dimethyl-	60	C2H8N2	000540-73-8	9



Data Path : Z:\VOASRV\HPCHEM1\MSVOA X\DATA\VX050719\
 Data File : VX009373.D
 Acq On : 07 May 2019 12:48
 Operator : JC/SP
 Sample : K2628-02
 Misc : 5.0mL/MSVOA X/WATER
 ALS Vial : 8 Sample Multiplier: 1

Instrument :
 MSVOA_X
 ClientSampleId :
 002M-35TH-AVE(MAY)

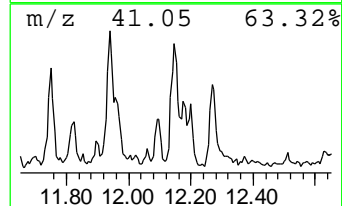
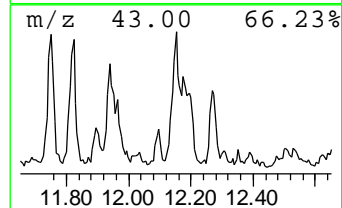
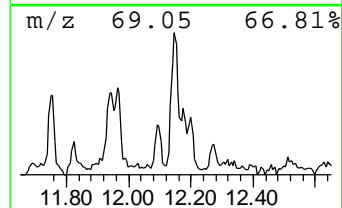
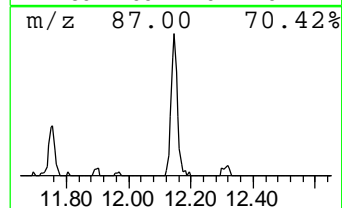
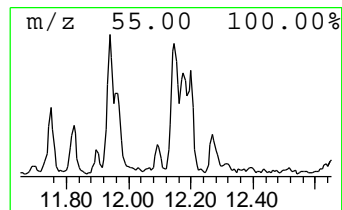
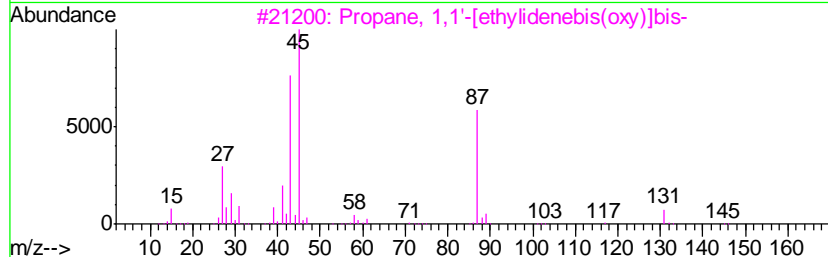
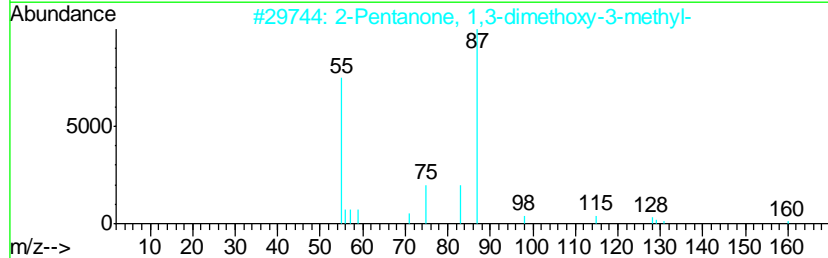
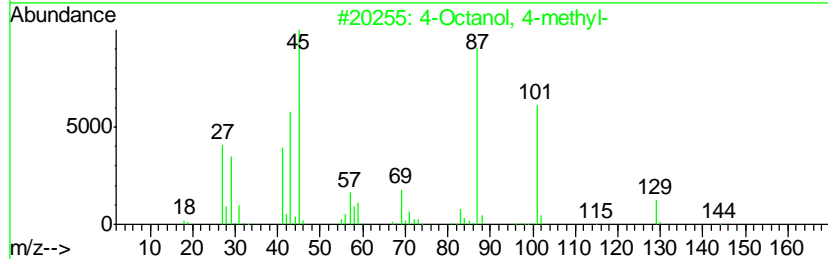
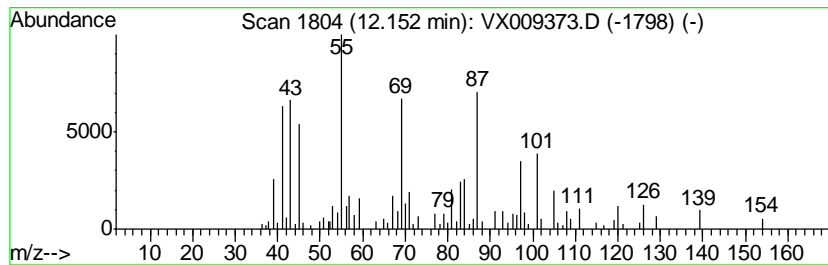
Quant Method : Z:\VOASRV\HPCHEM1\MSVOA X\METHOD\624X050119W.M
 Quant Title : METHOD 624 VOLATILE ORGANIC ANALYSIS

TIC Library : C:\DATABASE\NIST02.L
 TIC Integration Parameters: LSCINT.P

 Peak Number 2 unknown12.15 Concentration Rank 4

R.T.	EstConc	Area	Relative to ISTD	R.T.
12.15	3.54 ug/l	55974	Chlorobenzene-d5	10.11

Hit#	of	Tentative ID	MW	MolForm	CAS#	Qual
1	5	4-Octanol, 4-methyl-	144	C9H20O	023418-37-3	38
2		2-Pentanone, 1,3-dimethoxy-3-met...	160	C8H16O3	056830-17-2	37
3		Propane, 1,1'-[ethylidenebis(oxy...]	146	C8H18O2	000105-82-8	35
4		Dimethyl-cyano-phosphine	87	C3H6NP	031641-57-3	35
5		Acetic acid, 2-(7-methylenebicyc...	236	C14H20O3	1000274-05-5	14



Data Path : Z:\VOASRV\HPCHEM1\MSVOA X\DATA\VX050719\
 Data File : VX009373.D
 Acq On : 07 May 2019 12:48
 Operator : JC/SP
 Sample : K2628-02
 Misc : 5.0mL/MSVOA X/WATER
 ALS Vial : 8 Sample Multiplier: 1

Instrument :
 MSVOA_X
 ClientSampled :
 002M-35TH-AVE(MAY)

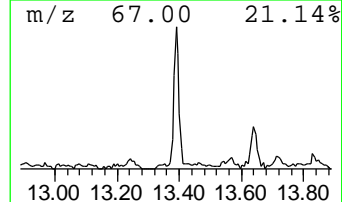
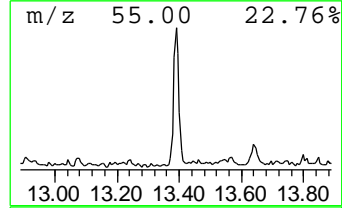
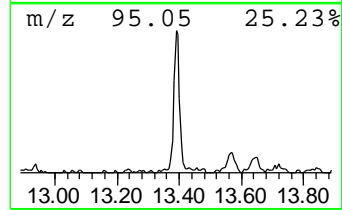
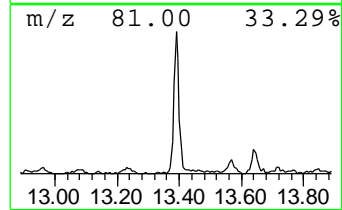
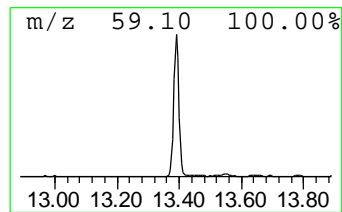
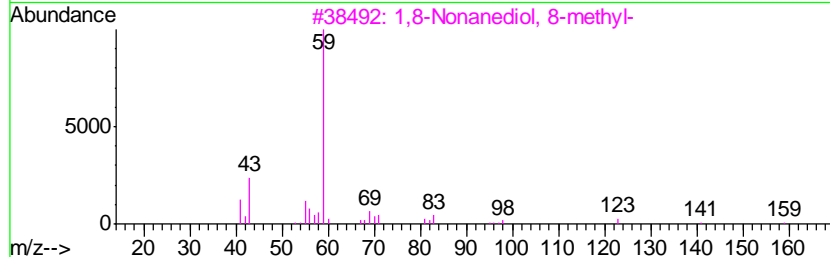
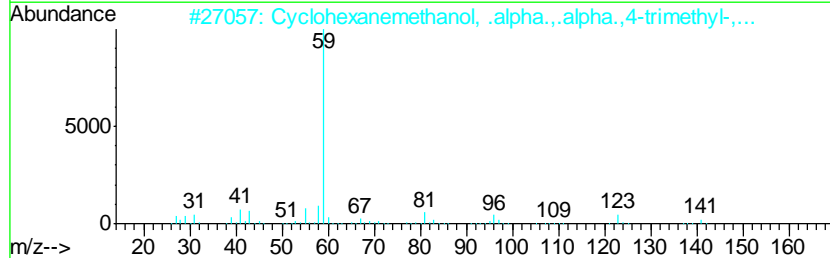
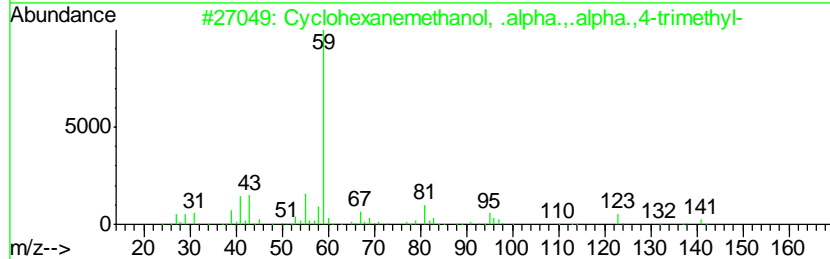
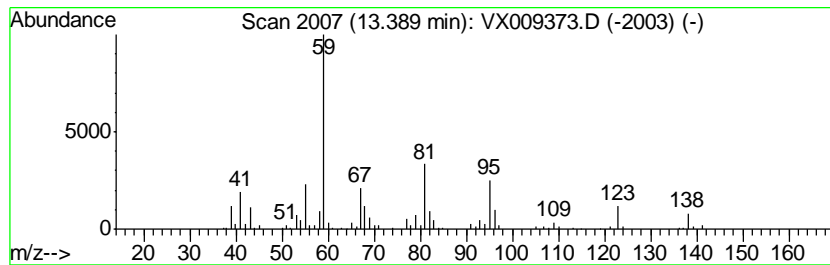
Quant Method : Z:\VOASRV\HPCHEM1\MSVOA X\METHOD\624X050119W.M
 Quant Title : METHOD 624 VOLATILE ORGANIC ANALYSIS

TIC Library : C:\DATABASE\NIST02.L
 TIC Integration Parameters: LSCINT.P

 Peak Number 3 unknown13.39 Concentration Rank 3

R.T.	EstConc	Area	Relative to ISTD	R.T.
13.39	4.98 ug/l	78722	Chlorobenzene-d5	10.11

Hit#	of	Tentative ID	MW	MolForm	CAS#	Qual
1	5	Cyclohexanemethanol, .alpha.,.al...	156	C10H20O	000498-81-7	28
2		Cyclohexanemethanol, .alpha.,.al...	156	C10H20O	007322-63-6	28
3		1,8-Nonanediol, 8-methyl-	174	C10H22O2	054725-73-4	25
4		7-Octen-4-ol, 2-methyl-6-methylene-	154	C10H18O	014314-21-7	25
5		1-Butene, 4-ethoxy-	100	C6H12O	044611-46-3	25



Data Path : Z:\VOASRV\HPCHEM1\MSVOA X\DATA\VX050719\
 Data File : VX009373.D
 Acq On : 07 May 2019 12:48
 Operator : JC/SP
 Sample : K2628-02
 Misc : 5.0mL/MSVOA X/WATER
 ALS Vial : 8 Sample Multiplier: 1

Instrument :
 MSVOA_X
 ClientSampleId :
 002M-35TH-AVE(MAY)

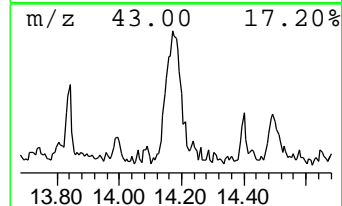
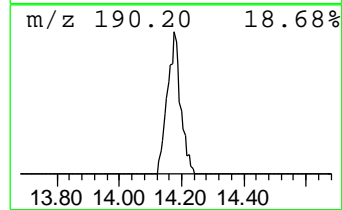
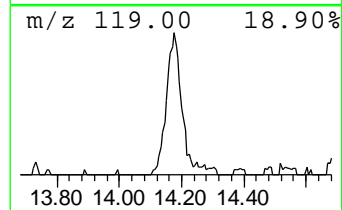
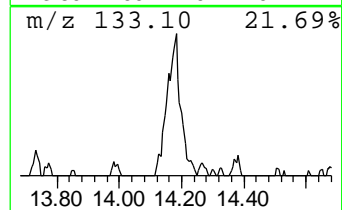
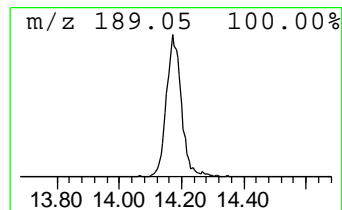
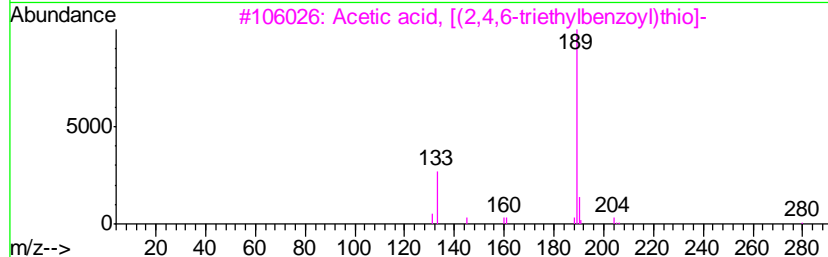
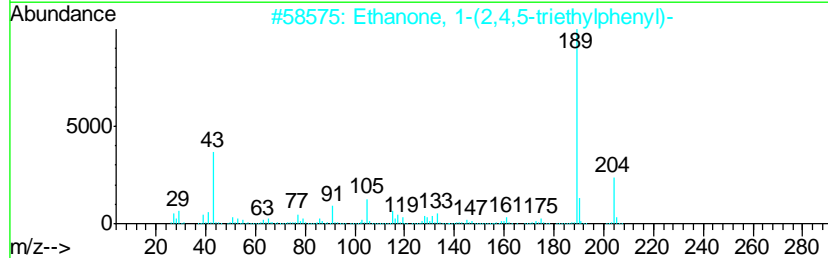
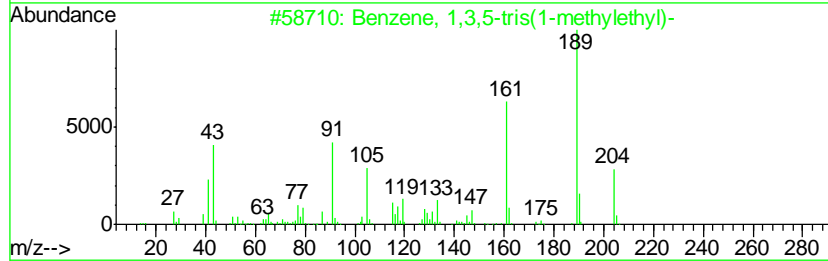
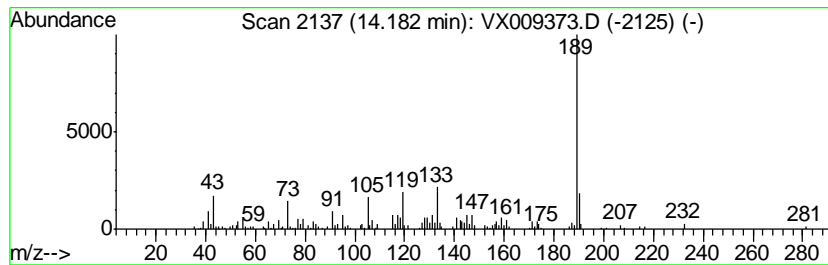
Quant Method : Z:\VOASRV\HPCHEM1\MSVOA X\METHOD\624X050119W.M
 Quant Title : METHOD 624 VOLATILE ORGANIC ANALYSIS

TIC Library : C:\DATABASE\NIST02.L
 TIC Integration Parameters: LSCINT.P

 Peak Number 4 Benzene, 1,3,5-tris(1-methy... Concentration Rank 2

R.T.	EstConc	Area	Relative to ISTD	R.T.
14.18	7.96 ug/l	125769	Chlorobenzene-d5	10.11

Hit#	of	Tentative ID	MW	MolForm	CAS#	Qual
1	5	Benzene, 1,3,5-tris(1-methylethyl)-	204	C15H24	000717-74-8	56
2		Ethanone, 1-(2,4,5-triethylphenyl)-	204	C14H20O	002715-54-0	53
3		Acetic acid, [(2,4,6-triethylben...	280	C15H20O3S	067902-78-7	50
4		6S-2,3,8,8-Tetramethyltricyclo[5...	204	C15H24	137235-48-4	50
5		1H-Indole, 1-(trimethylsilyl)-	189	C11H15NSi	017983-42-5	49



Data Path : Z:\VOASRV\HPCHEM1\MSVOA_X\DATA\VX050719\
Data File : VX009373.D
Acq On : 07 May 2019 12:48
Operator : JC/SP
Sample : K2628-02
Misc : 5.0mL/MSVOA_X/WATER
ALS Vial : 8 Sample Multiplier: 1

Instrument :
MSVOA_X
ClientSampleId :
002M-35TH-AVE(MAY)

Quant Method : Z:\VOASRV\HPCHEM1\MSVOA_X\METHOD\624X050119W.M
Quant Title : METHOD 624 VOLATILE ORGANIC ANALYSIS

TIC Library : C:\DATABASE\NIST02.L
TIC Integration Parameters: LSCINT.P

TIC Top Hit name	RT	EstConc	Units	Response	--Internal Standard--			
					#	RT	Resp	Conc
Isopropyl Alcohol	2.61	96.8	ug/l	722724	1	5.01	224101	30.0
unknown12.15	12.15	3.5	ug/l	55974	3	10.11	473950	30.0
unknown13.39	13.39	5.0	ug/l	78722	3	10.11	473950	30.0
Benzene, 1,3,5-tr...	14.18	8.0	ug/l	125769	3	10.11	473950	30.0