

Data Path : Z:\voasrv\HPCHEM1\MSVOA_X\Data\VX050721\
 Data File : VX021878.D
 Acq On : 07 May 2021 16:19
 Operator : JC/MD
 Sample : M2341-04
 Misc : 5.0mL/MSVOA_X/WATER
 ALS Vial : 18 Sample Multiplier: 1

Instrument :
 MSVOA_X
 ClientSampleId :
 STORAGE-BLANK-SAMPLE-MANA

Quant Time: May 08 06:21:29 2021
 Quant Method : Z:\voasrv\HPCHEM1\MSVOA_X\Method\82X050721W.M
 Quant Title : SW846 8260
 QLast Update : Sat May 08 05:38:18 2021
 Response via : Initial Calibration

Compound	R.T.	QIon	Response	Conc	Units	Dev(Min)

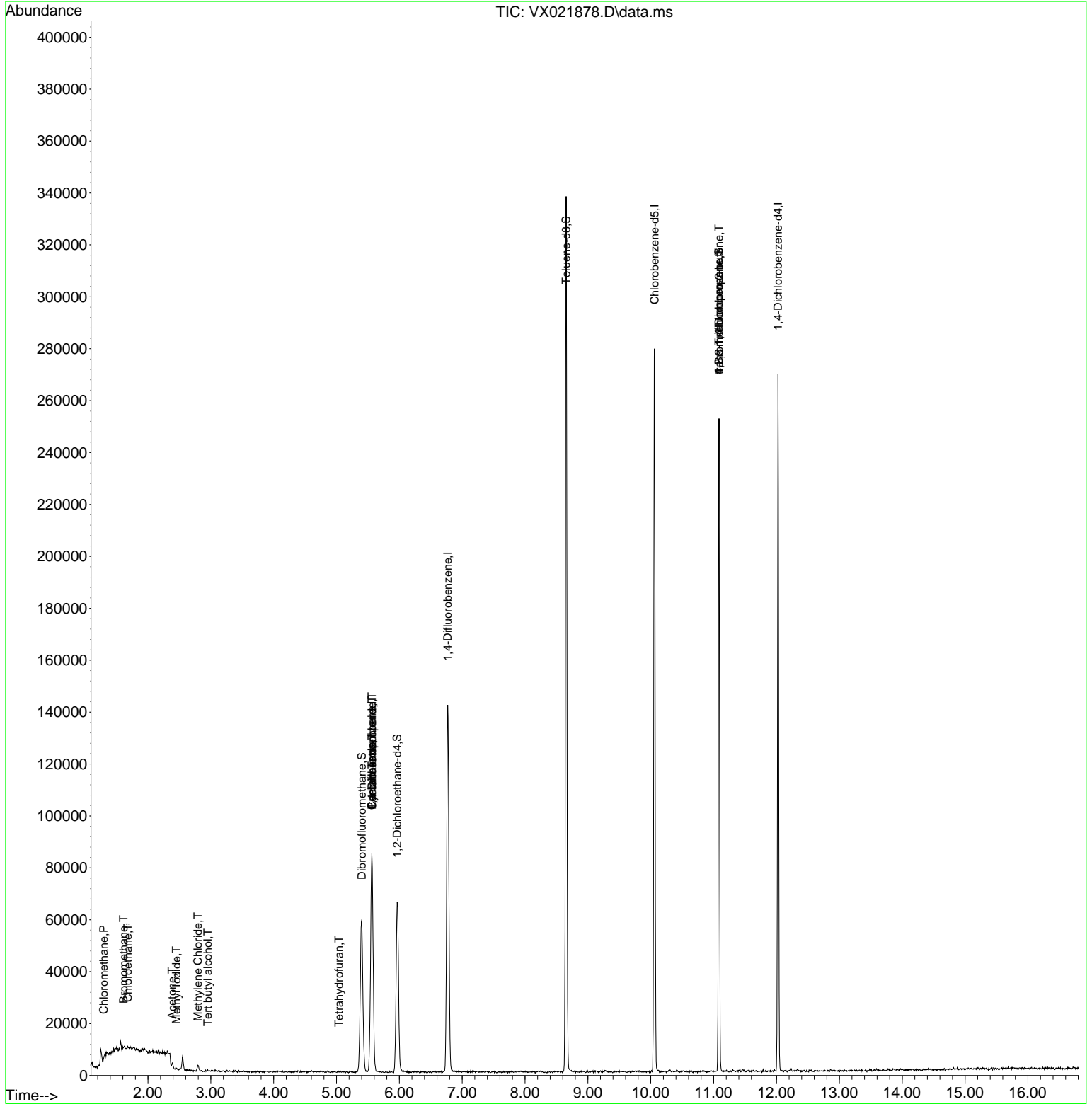
Internal Standards						
1) Pentafluorobenzene	5.562	168	73473	50.00	ug/l	0.00
34) 1,4-Difluorobenzene	6.769	114	145916	50.00	ug/l	0.00
63) Chlorobenzene-d5	10.061	117	127751	50.00	ug/l	0.00
72) 1,4-Dichlorobenzene-d4	12.024	152	49153	50.00	ug/l	0.00
System Monitoring Compounds						
33) 1,2-Dichloroethane-d4	5.964	65	60406	49.96	ug/l	0.00
Spiked Amount	50.000	Range 78 - 117	Recovery	=	99.92%	
35) Dibromofluoromethane	5.403	113	51043	51.04	ug/l	0.00
Spiked Amount	50.000	Range 75 - 124	Recovery	=	102.08%	
50) Toluene-d8	8.653	98	192900	50.55	ug/l	0.00
Spiked Amount	50.000	Range 92 - 112	Recovery	=	101.10%	
62) 4-Bromofluorobenzene	11.085	95	68034	45.18	ug/l	0.00
Spiked Amount	50.000	Range 83 - 123	Recovery	=	90.36%	
Target Compounds						
						Qvalue
3) Chloromethane	1.294	50	320	0.28	ug/l	93
5) Bromomethane	1.611	94	601	1.23	ug/l #	54
6) Chloroethane	1.678	64	500	0.72	ug/l #	56
10) Methyl Iodide	2.453	142	420	0.38	ug/l #	63
11) Tert butyl alcohol	2.953	59	261	0.81	ug/l #	69
13) Acrolein	2.245	56	119	Below Cal	#	77
16) Acetone	2.386	43	1888	3.48	ug/l	94
20) Methylene Chloride	2.794	84	994	1.03	ug/l #	82
29) Tetrahydrofuran	5.038	42	402	0.72	ug/l #	40
31) Cyclohexane	5.562	56	2307	1.44	ug/l #	3
36) 1,1-Dichloropropene	5.562	75	6485	4.19	ug/l #	50
38) Carbon Tetrachloride	5.562	117	7966	5.15	ug/l #	17
76) 1,2,3-Trichloropropane	11.085	75	34043	24.36	ug/l #	39
81) trans-1,4-Dichloro-2-b...	11.085	75	34043	56.51	ug/l #	12

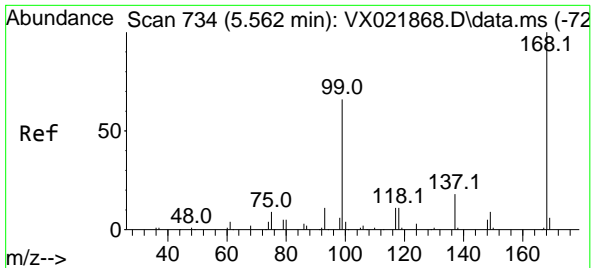
(#) = qualifier out of range (m) = manual integration (+) = signals summed

Data Path : Z:\voasrv\HPCHEM1\MSVOA_X\Data\VX050721\
 Data File : VX021878.D
 Acq On : 07 May 2021 16:19
 Operator : JC/MD
 Sample : M2341-04
 Misc : 5.0mL/MSVOA_X/WATER
 ALS Vial : 18 Sample Multiplier: 1

Instrument :
 MSVOA_X
 ClientSampleId :
 STORAGE-BLANK-SAMPLE-MANA

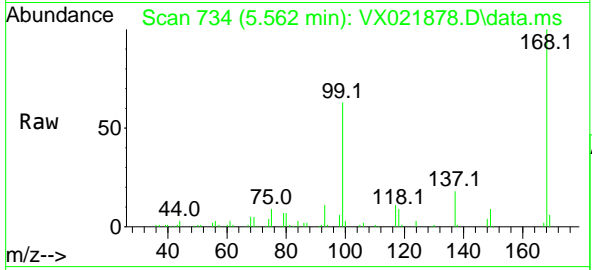
Quant Time: May 08 06:21:29 2021
 Quant Method : Z:\voasrv\HPCHEM1\MSVOA_X\Method\82X050721W.M
 Quant Title : SW846 8260
 QLast Update : Sat May 08 05:38:18 2021
 Response via : Initial Calibration



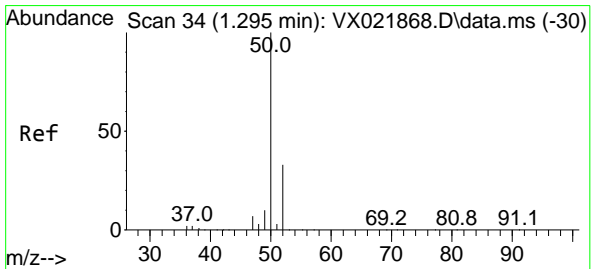
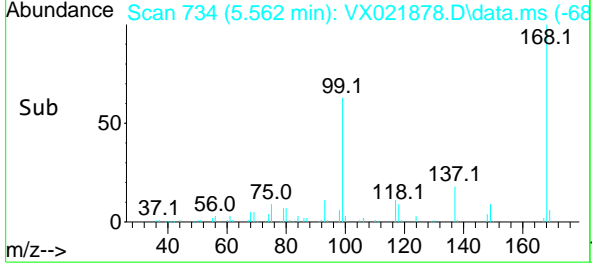
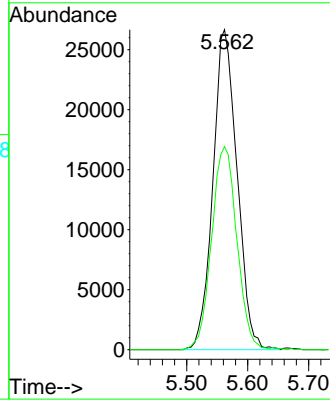


#1
 Pentafluorobenzene
 Concen: 50.00 ug/l
 RT: 5.562 min Scan# 734
 Delta R.T. -0.000 min
 Lab File: VX021878.D
 Acq: 07 May 2021 16:19

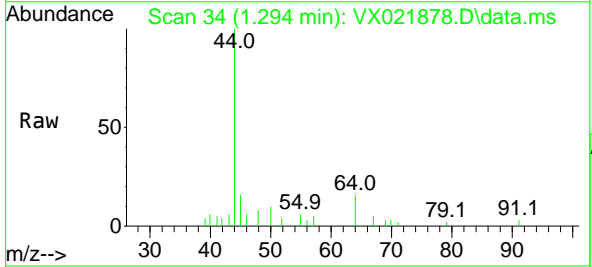
Instrument :
 MSVOA_X
 ClientSampleId :
 STORAGE-BLANK-SAMPLE-MANA



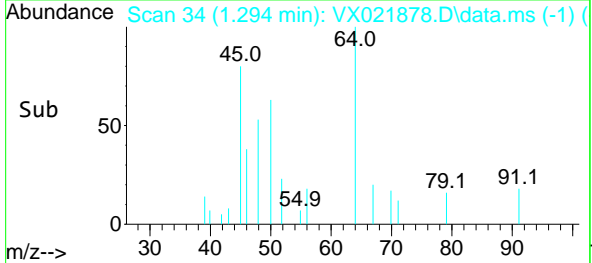
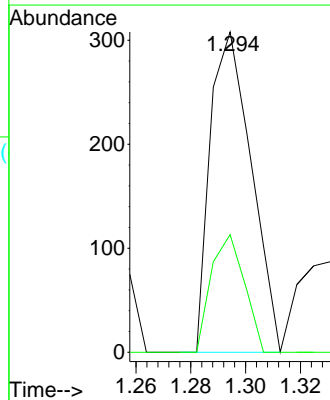
Tgt Ion:168 Resp: 73473
 Ion Ratio Lower Upper
 168 100
 99 63.5 45.8 68.6

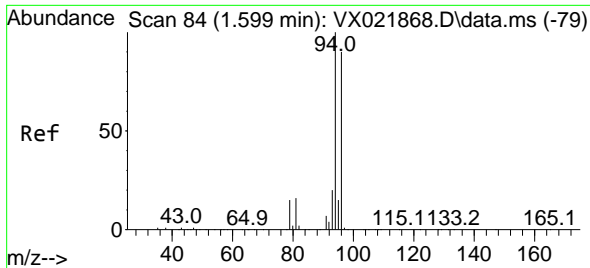


#3
 Chloromethane
 Concen: 0.28 ug/l
 RT: 1.294 min Scan# 34
 Delta R.T. -0.001 min
 Lab File: VX021878.D
 Acq: 07 May 2021 16:19



Tgt Ion: 50 Resp: 320
 Ion Ratio Lower Upper
 50 100
 52 36.7 26.4 39.6

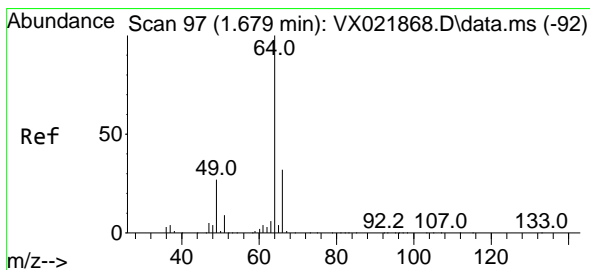
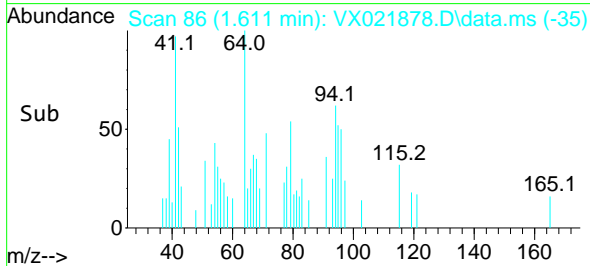
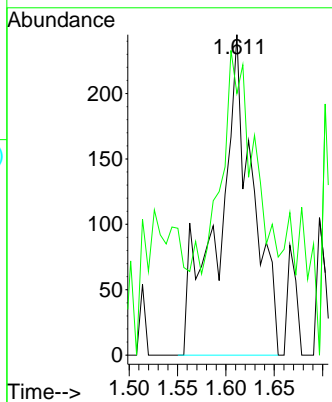
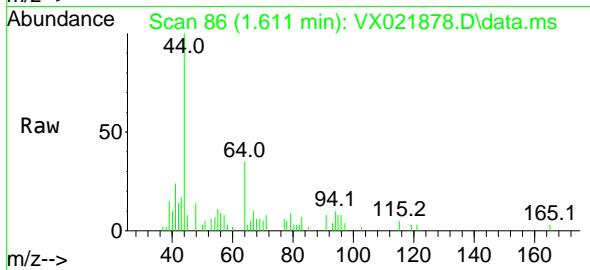




#5
 Bromomethane
 Concen: 1.23 ug/l
 RT: 1.611 min Scan# 86
 Delta R.T. 0.012 min
 Lab File: VX021878.D
 Acq: 07 May 2021 16:19

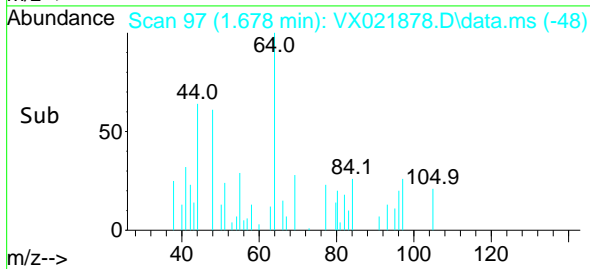
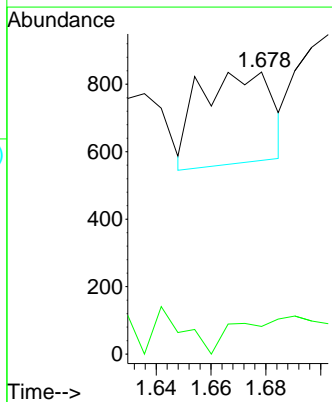
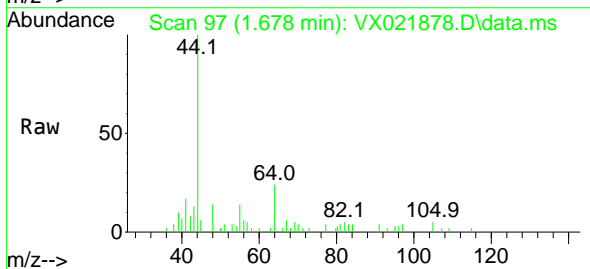
Instrument :
 MSVOA_X
 ClientSampleId :
 STORAGE-BLANK-SAMPLE-MANA

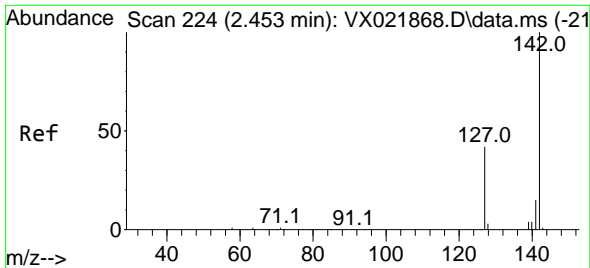
Tgt Ion: 94 Resp: 601
 Ion Ratio Lower Upper
 94 100
 96 51.0 76.4 114.6#



#6
 Chloroethane
 Concen: 0.72 ug/l
 RT: 1.678 min Scan# 97
 Delta R.T. -0.001 min
 Lab File: VX021878.D
 Acq: 07 May 2021 16:19

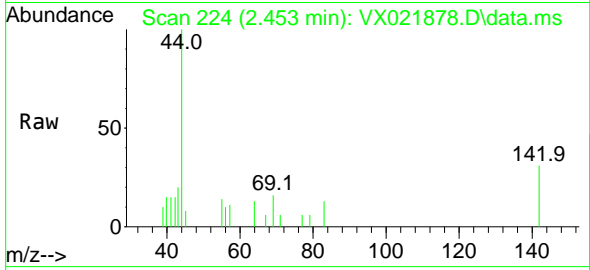
Tgt Ion: 64 Resp: 500
 Ion Ratio Lower Upper
 64 100
 66 7.2 25.4 38.0#



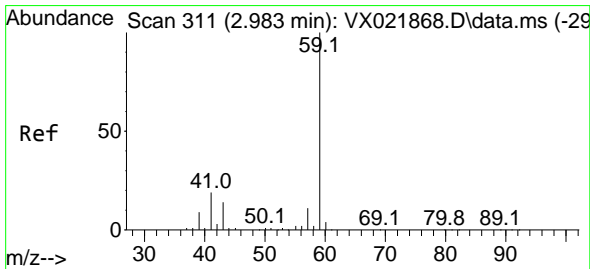
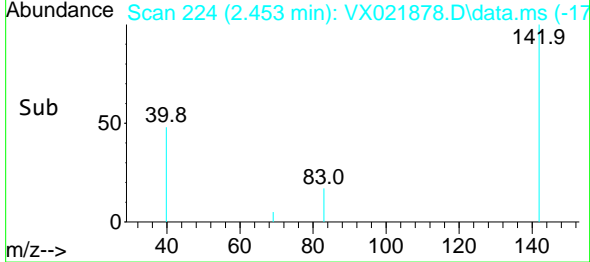
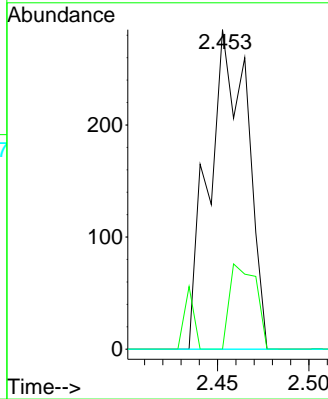


#10
 Methyl Iodide
 Concen: 0.38 ug/l
 RT: 2.453 min Scan# 224
 Delta R.T. -0.000 min
 Lab File: VX021878.D
 Acq: 07 May 2021 16:19

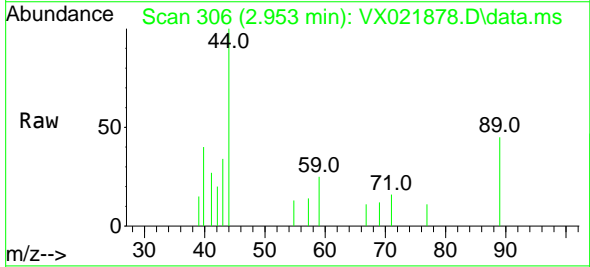
Instrument :
 MSVOA_X
 ClientSampled :
 STORAGE-BLANK-SAMPLE-MANA



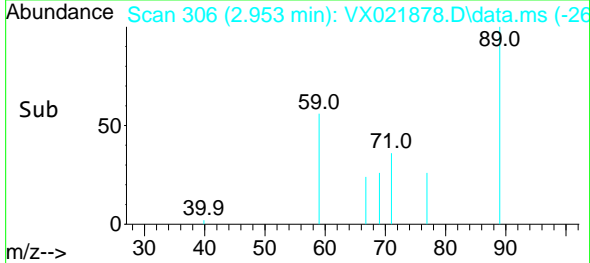
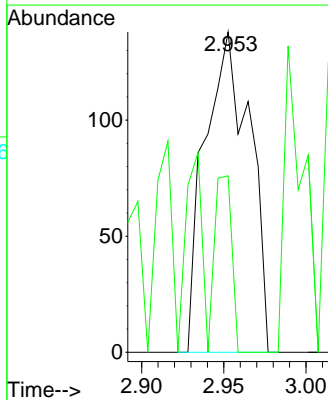
Tgt Ion	Resp	Lower	Upper
142	100		
127	18.1	33.3	49.9#
141	0.0	11.4	17.0#

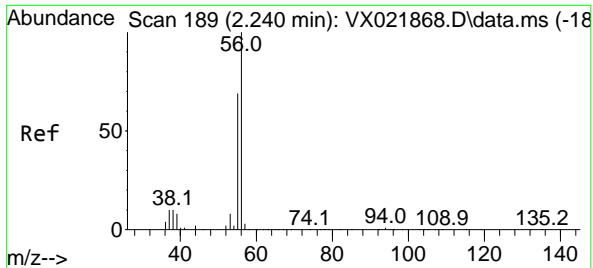


#11
 Tert butyl alcohol
 Concen: 0.81 ug/l
 RT: 2.953 min Scan# 306
 Delta R.T. -0.030 min
 Lab File: VX021878.D
 Acq: 07 May 2021 16:19



Tgt Ion	Resp	Lower	Upper
59	100		
57	21.1	7.8	11.8#

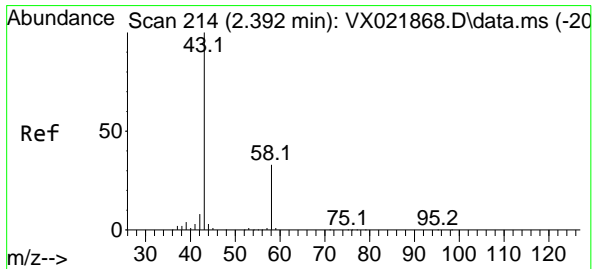
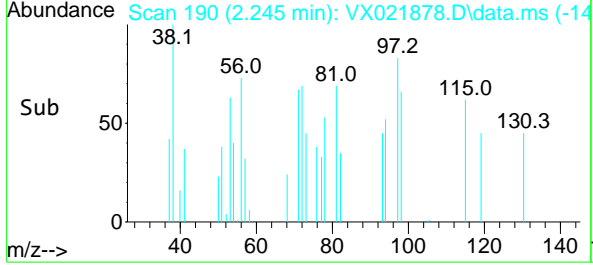
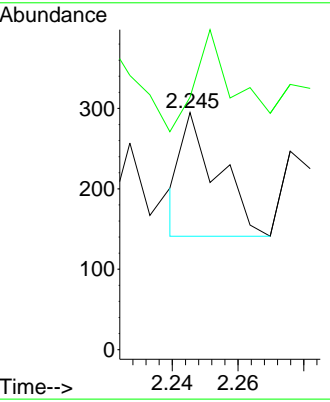
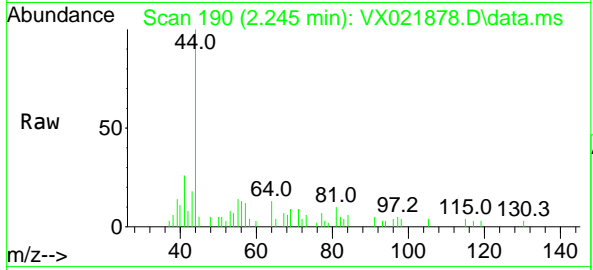




#13
 Acrolein
 Concen: Below Cal
 RT: 2.245 min Scan# 190
 Delta R.T. 0.005 min
 Lab File: VX021878.D
 Acq: 07 May 2021 16:19

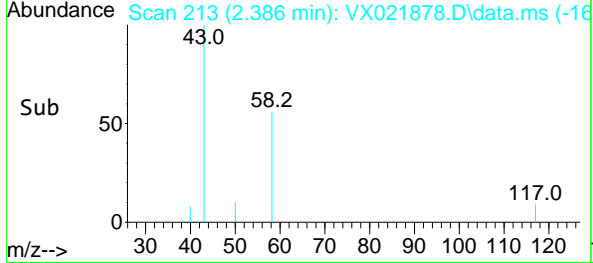
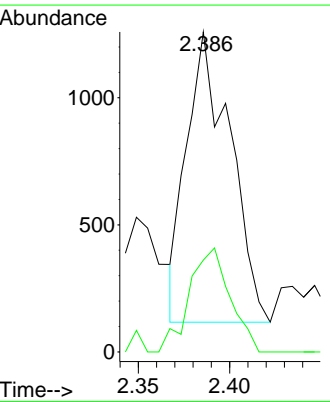
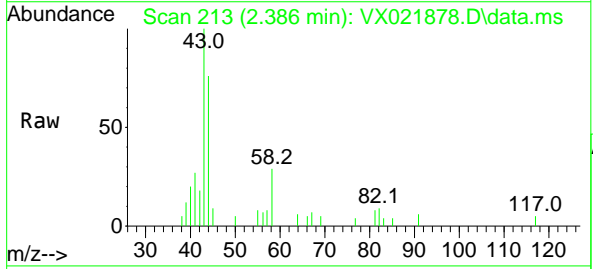
Instrument :
 MSVOA_X
 ClientSampleId :
 STORAGE-BLANK-SAMPLE-MANA

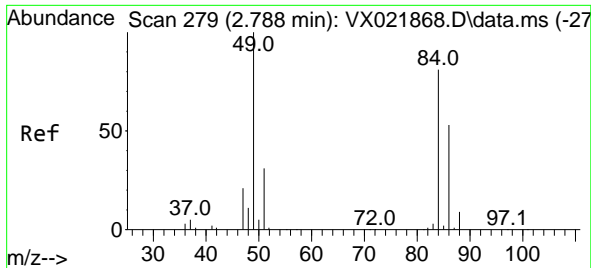
Tgt Ion: 56 Resp: 119
 Ion Ratio Lower Upper
 56 100
 55 89.1 56.4 84.6#



#16
 Acetone
 Concen: 3.48 ug/l
 RT: 2.386 min Scan# 213
 Delta R.T. -0.006 min
 Lab File: VX021878.D
 Acq: 07 May 2021 16:19

Tgt Ion: 43 Resp: 1888
 Ion Ratio Lower Upper
 43 100
 58 31.6 27.8 41.8

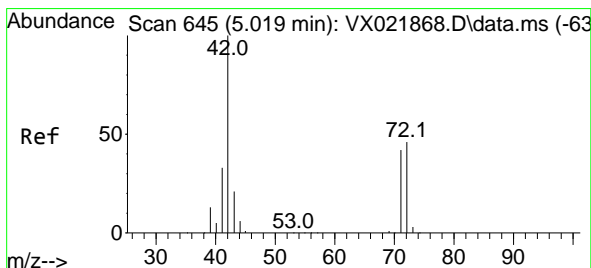
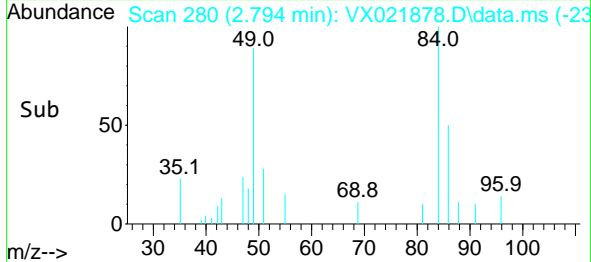
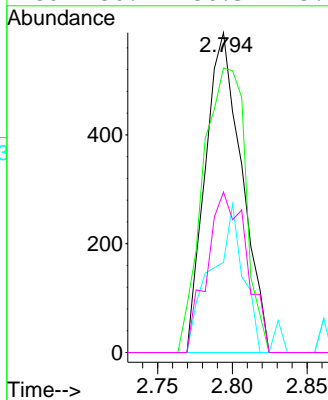
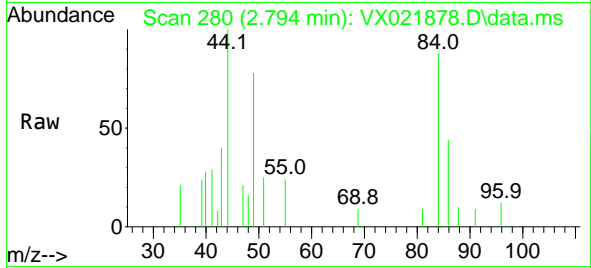




#20
 Methylene Chloride
 Concen: 1.03 ug/l
 RT: 2.794 min Scan# 280
 Delta R.T. 0.006 min
 Lab File: VX021878.D
 Acq: 07 May 2021 16:19

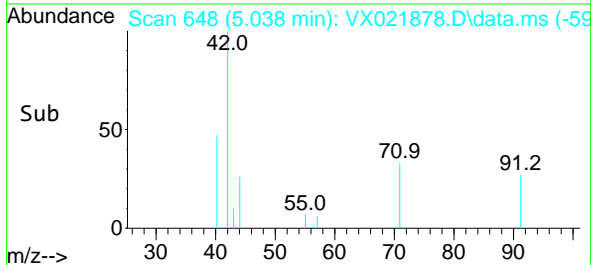
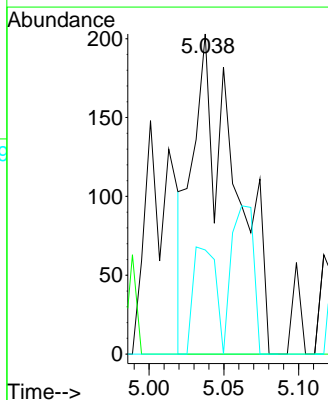
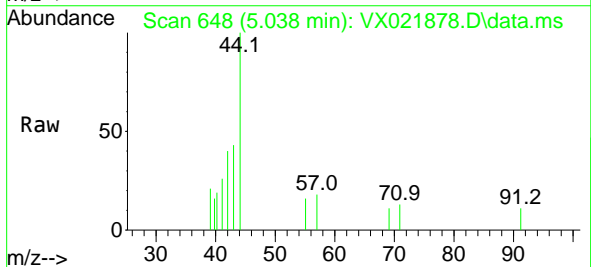
Instrument :
 MSVOA_X
 ClientSampleId :
 STORAGE-BLANK-SAMPLE-MANA

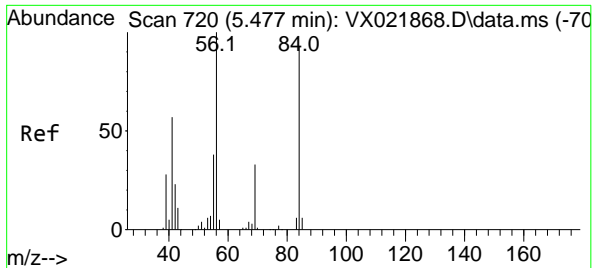
Tgt Ion	Resp	Lower	Upper
84	100		
49	88.9	88.6	132.8
51	28.2	27.0	40.6
86	50.2	50.3	75.5#



#29
 Tetrahydrofuran
 Concen: 0.72 ug/l
 RT: 5.038 min Scan# 648
 Delta R.T. 0.019 min
 Lab File: VX021878.D
 Acq: 07 May 2021 16:19

Tgt Ion	Resp	Lower	Upper
42	100		
72	0.0	41.7	62.5#
71	17.7	38.4	57.6#

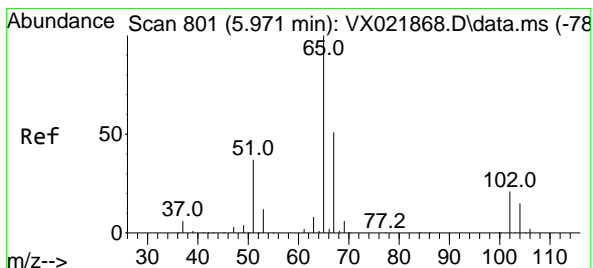
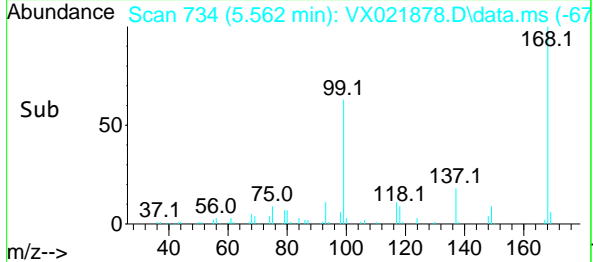
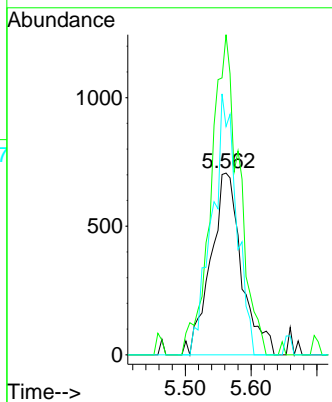
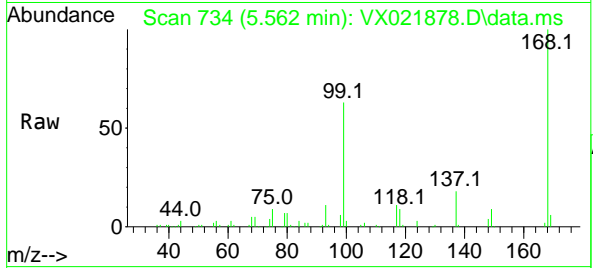




#31
 Cyclohexane
 Concen: 1.44 ug/l
 RT: 5.562 min Scan# 734
 Delta R.T. 0.085 min
 Lab File: VX021878.D
 Acq: 07 May 2021 16:19

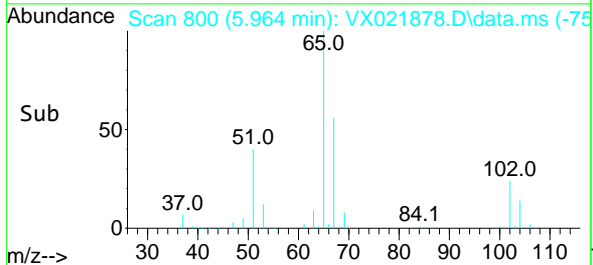
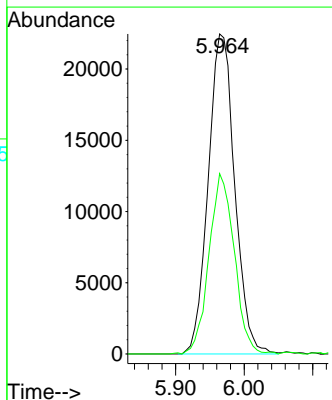
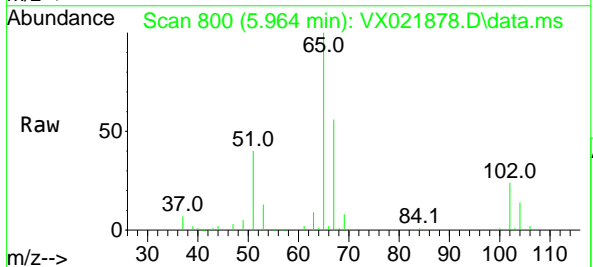
Instrument :
 MSVOA_X
ClientSampleId :
 STORAGE-BLANK-SAMPLE-MANA

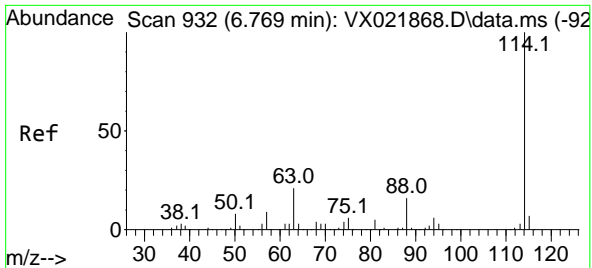
Tgt Ion	Resp	Lower	Upper
56	100		
69	176.1	25.3	37.9#
84	125.6	71.4	107.0#



#33
 1,2-Dichloroethane-d4
 Concen: 49.96 ug/l
 RT: 5.964 min Scan# 800
 Delta R.T. -0.007 min
 Lab File: VX021878.D
 Acq: 07 May 2021 16:19

Tgt Ion	Resp	Lower	Upper
65	100		
67	53.8	0.0	105.4

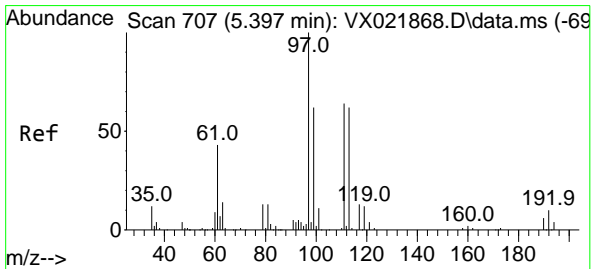
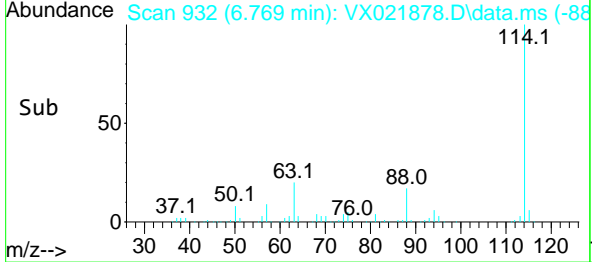
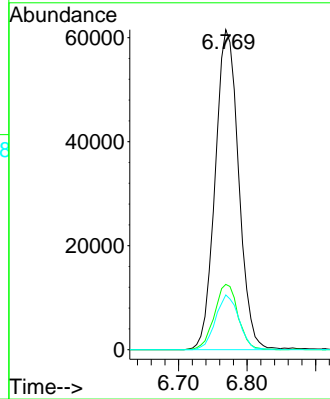
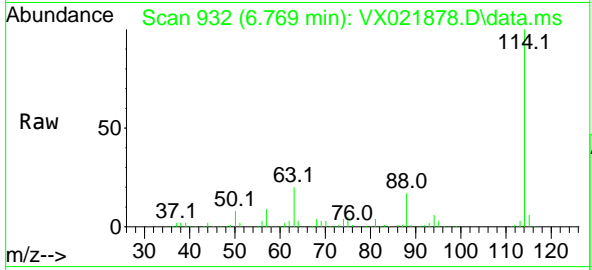




#34
 1,4-Difluorobenzene
 Concen: 50.00 ug/l
 RT: 6.769 min Scan# 932
 Delta R.T. -0.000 min
 Lab File: VX021878.D
 Acq: 07 May 2021 16:19

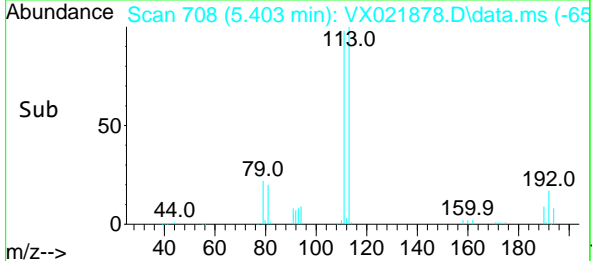
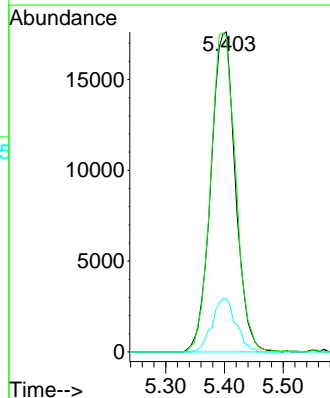
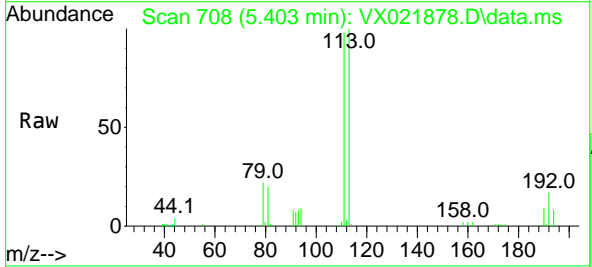
Instrument :
 MSVOA_X
 ClientSampleId :
 STORAGE-BLANK-SAMPLE-MANA

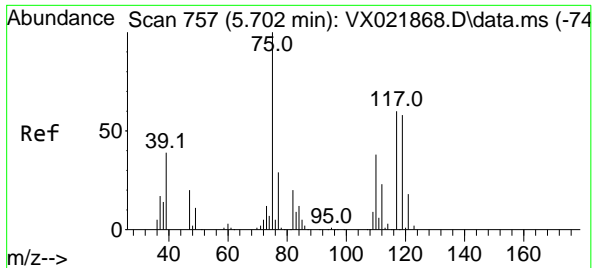
Tgt Ion	Resp	Lower	Upper
114	145916		
63	20.4	0.0	40.8
88	17.1	0.0	32.8



#35
 Dibromofluoromethane
 Concen: 51.04 ug/l
 RT: 5.403 min Scan# 708
 Delta R.T. 0.006 min
 Lab File: VX021878.D
 Acq: 07 May 2021 16:19

Tgt Ion	Resp	Lower	Upper
113	51043		
111	102.0	81.9	122.9
192	16.3	16.7	25.1#

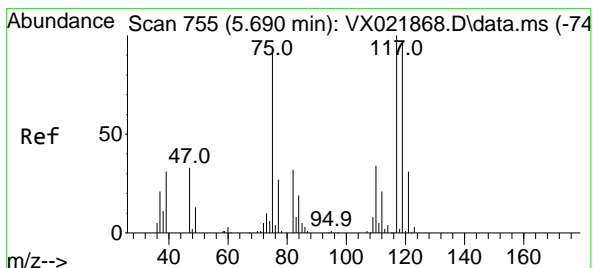
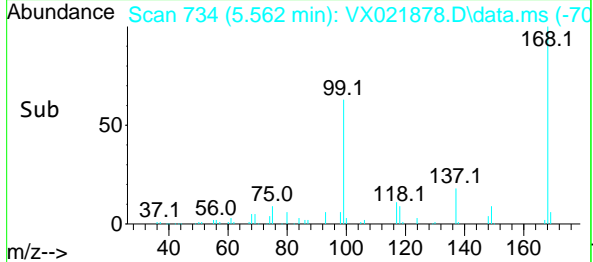
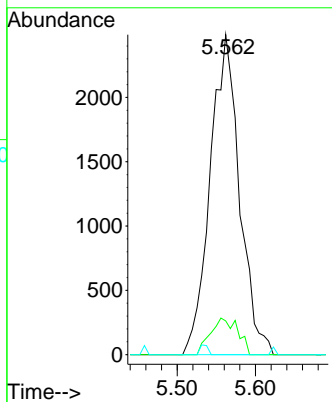
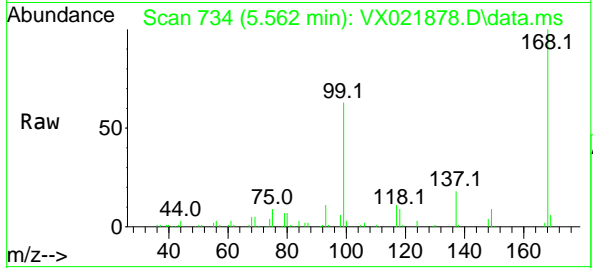




#36
 1,1-Dichloropropene
 Concen: 4.19 ug/l
 RT: 5.562 min Scan# 734
 Delta R.T. -0.140 min
 Lab File: VX021878.D
 Acq: 07 May 2021 16:19

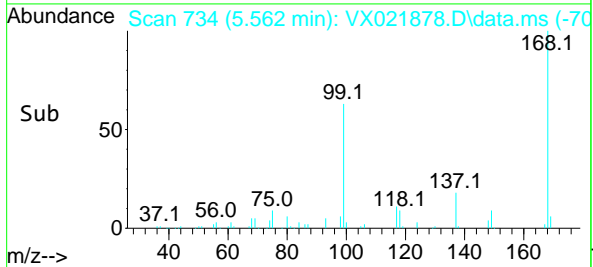
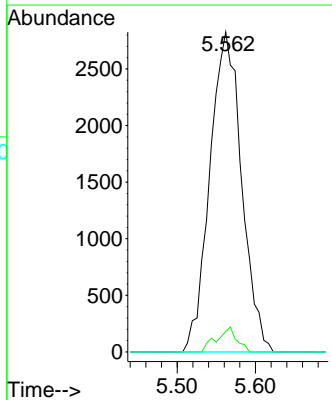
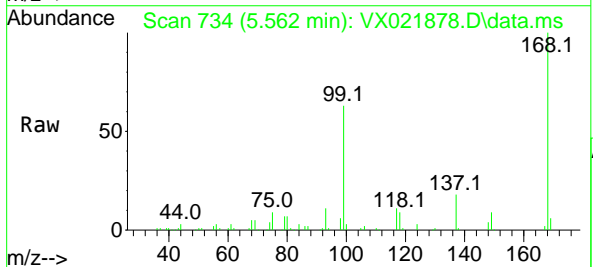
Instrument :
 MSVOA_X
ClientSampleId :
 STORAGE-BLANK-SAMPLE-MANA

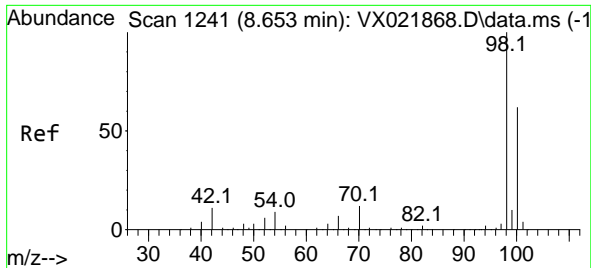
Tgt Ion	Resp	Lower	Upper
75	6485		
75	100		
110	10.7	18.1	54.4#
77	0.0	25.3	37.9#



#38
 Carbon Tetrachloride
 Concen: 5.15 ug/l
 RT: 5.562 min Scan# 734
 Delta R.T. -0.128 min
 Lab File: VX021878.D
 Acq: 07 May 2021 16:19

Tgt Ion	Resp	Lower	Upper
117	7966		
117	100		
119	6.4	76.2	114.2#
121	0.0	24.8	37.2#

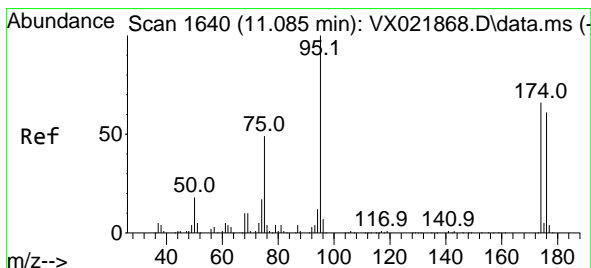
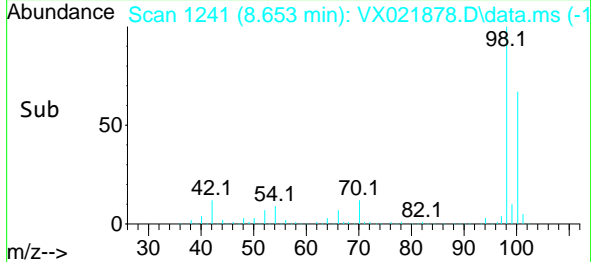
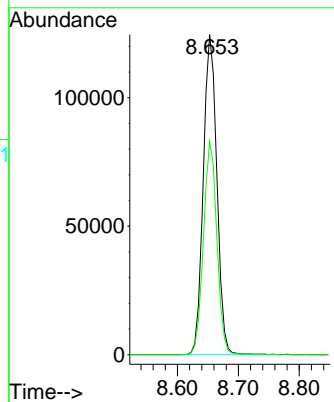
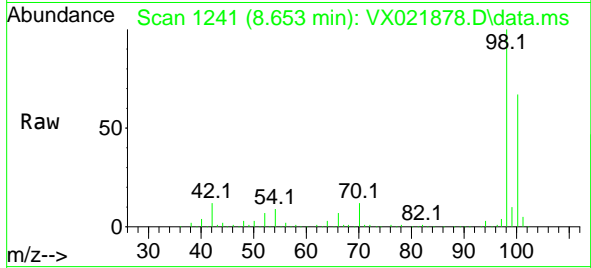




#50
 Toluene-d8
 Concen: 50.55 ug/l
 RT: 8.653 min Scan# 1241
 Delta R.T. -0.000 min
 Lab File: VX021878.D
 Acq: 07 May 2021 16:19

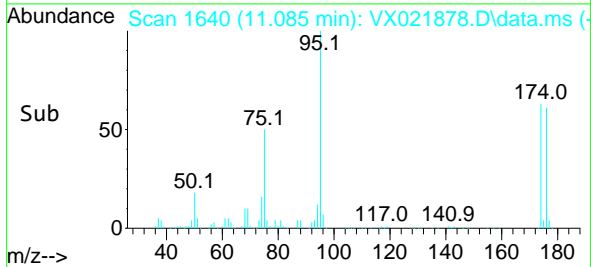
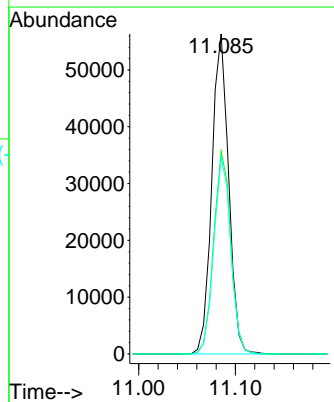
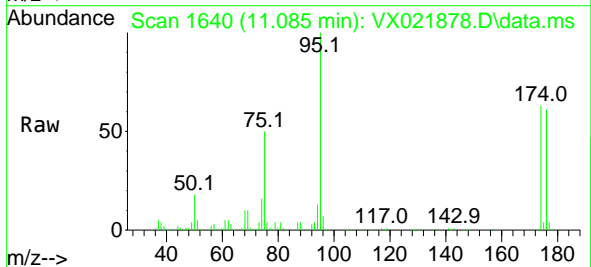
Instrument :
 MSVOA_X
ClientSampled :
 STORAGE-BLANK-SAMPLE-MANA

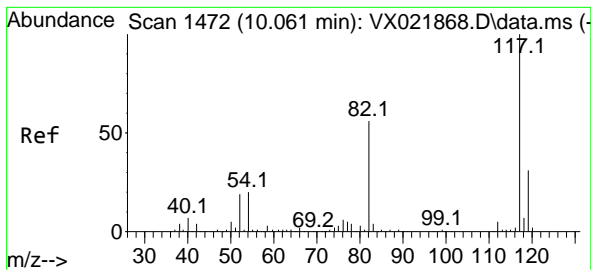
Tgt Ion: 98 Resp: 192900
 Ion Ratio Lower Upper
 98 100
 100 66.0 51.9 77.9



#62
 4-Bromofluorobenzene
 Concen: 45.18 ug/l
 RT: 11.085 min Scan# 1640
 Delta R.T. 0.000 min
 Lab File: VX021878.D
 Acq: 07 May 2021 16:19

Tgt Ion: 95 Resp: 68034
 Ion Ratio Lower Upper
 95 100
 174 64.4 0.0 154.6
 176 62.0 0.0 155.8

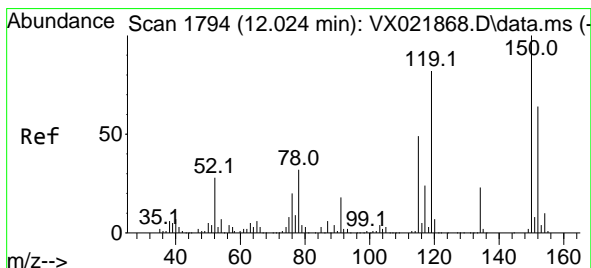
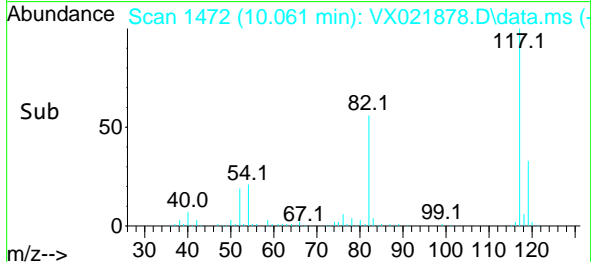
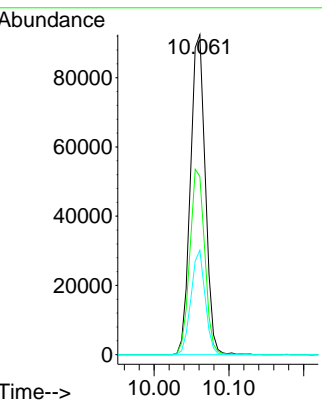
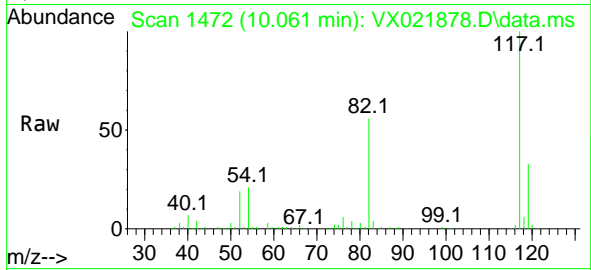




#63
 Chlorobenzene-d5
 Concen: 50.00 ug/l
 RT: 10.061 min Scan# 1472
 Delta R.T. 0.000 min
 Lab File: VX021878.D
 Acq: 07 May 2021 16:19

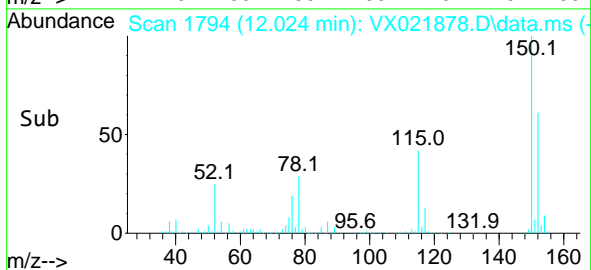
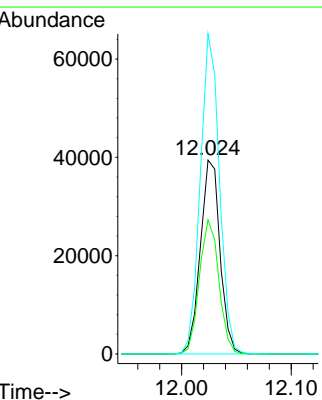
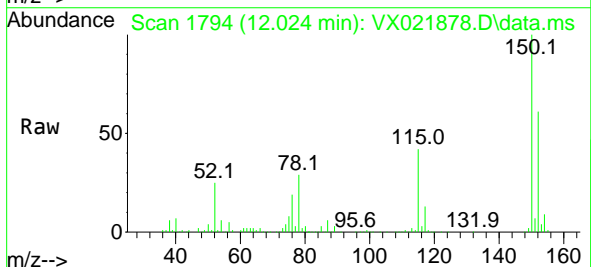
Instrument :
 MSVOA_X
ClientSampleId :
 STORAGE-BLANK-SAMPLE-MANA

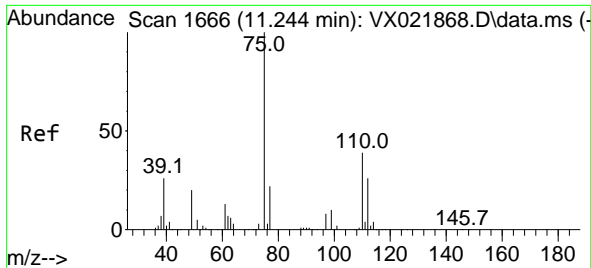
Tgt Ion	Resp	Lower	Upper
117	127751		
117	100		
82	55.6	47.4	71.2
119	32.6	26.6	39.8



#72
 1,4-Dichlorobenzene-d4
 Concen: 50.00 ug/l
 RT: 12.024 min Scan# 1794
 Delta R.T. 0.000 min
 Lab File: VX021878.D
 Acq: 07 May 2021 16:19

Tgt Ion	Resp	Lower	Upper
152	49153		
152	100		
115	68.3	41.1	123.3
150	160.9	0.0	349.0

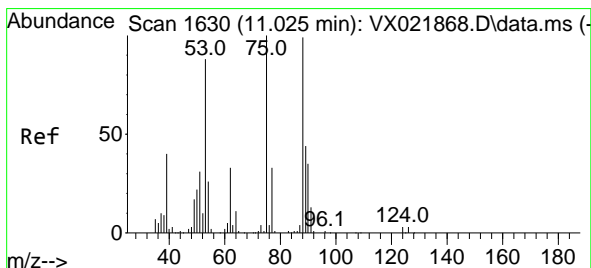
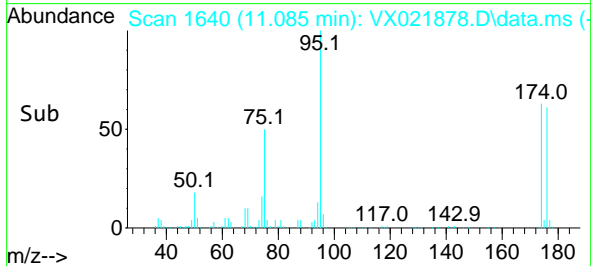
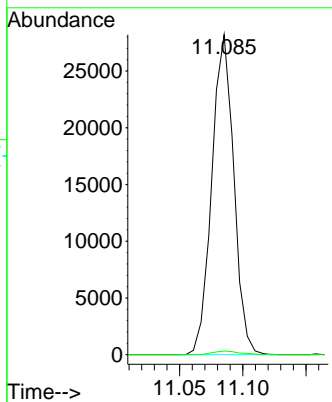
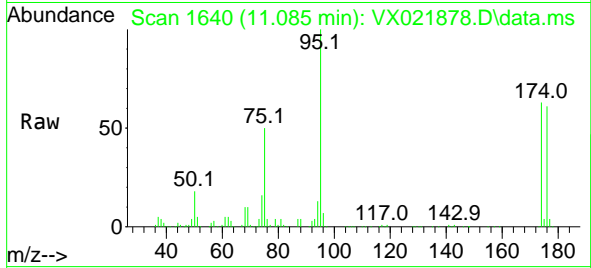




#76
 1,2,3-Trichloropropane
 Concen: 24.36 ug/l
 RT: 11.085 min Scan# 1640
 Delta R.T. -0.159 min
 Lab File: VX021878.D
 Acq: 07 May 2021 16:19

Instrument :
 MSVOA_X
ClientSampleId :
 STORAGE-BLANK-SAMPLE-MANA

Tgt Ion: 75 Resp: 34043
 Ion Ratio Lower Upper
 75 100
 77 1.4 19.1 57.5#



#81
 trans-1,4-Dichloro-2-butene
 Concen: 56.51 ug/l
 RT: 11.085 min Scan# 1640
 Delta R.T. 0.060 min
 Lab File: VX021878.D
 Acq: 07 May 2021 16:19

Tgt Ion: 75 Resp: 34043
 Ion Ratio Lower Upper
 75 100
 53 0.0 74.5 111.7#
 89 0.0 37.9 56.9#

